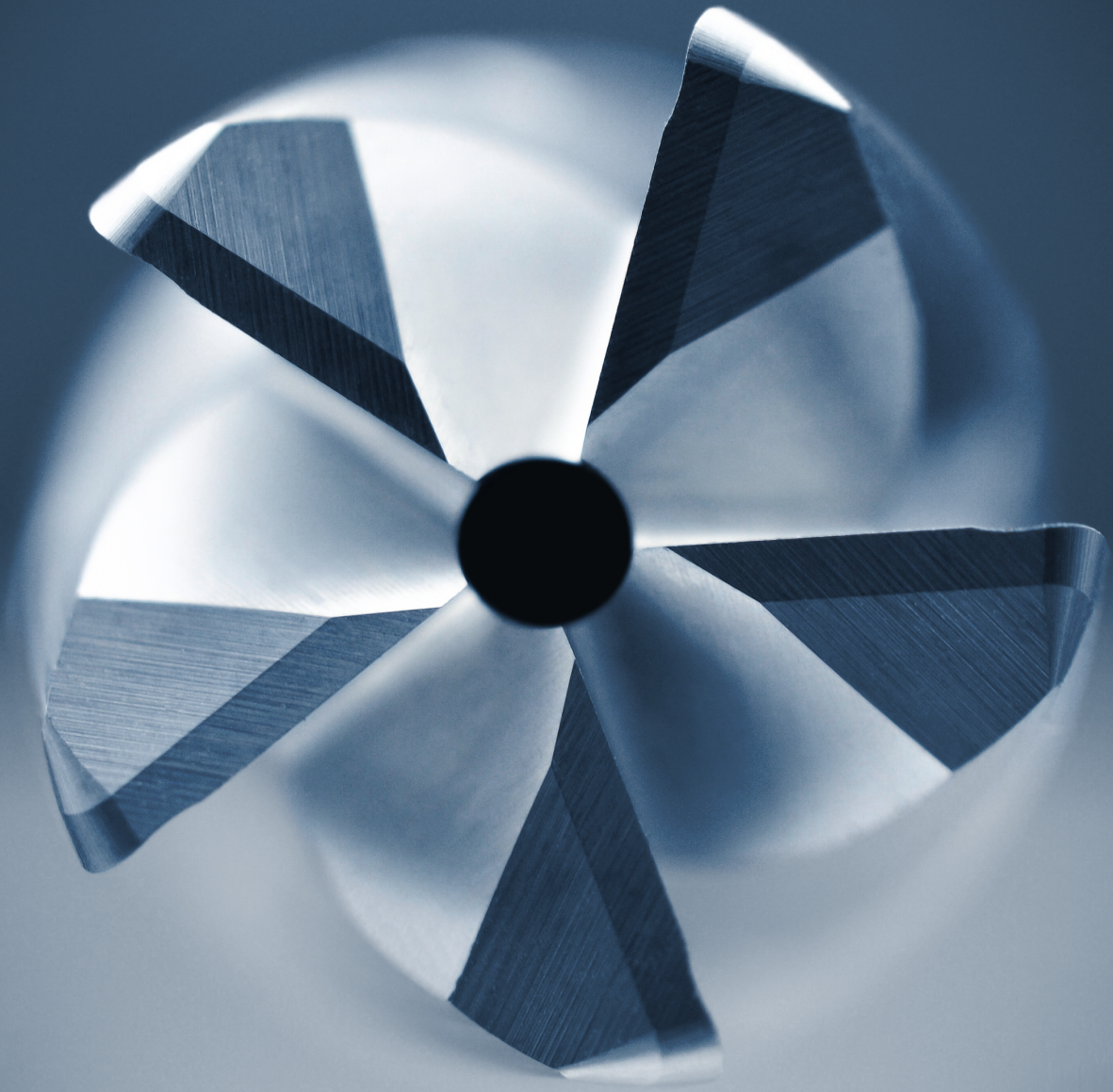




# CORPORATE PROFILE



**CUSTOM COMES STANDARD**

**What Makes Us Different      2**

---

**Pursuing The Perfect Tool      3**

---

**Corporate Development      5**

---

**Products & Capabilities      7**

---

**Tool Reconditioning      12**

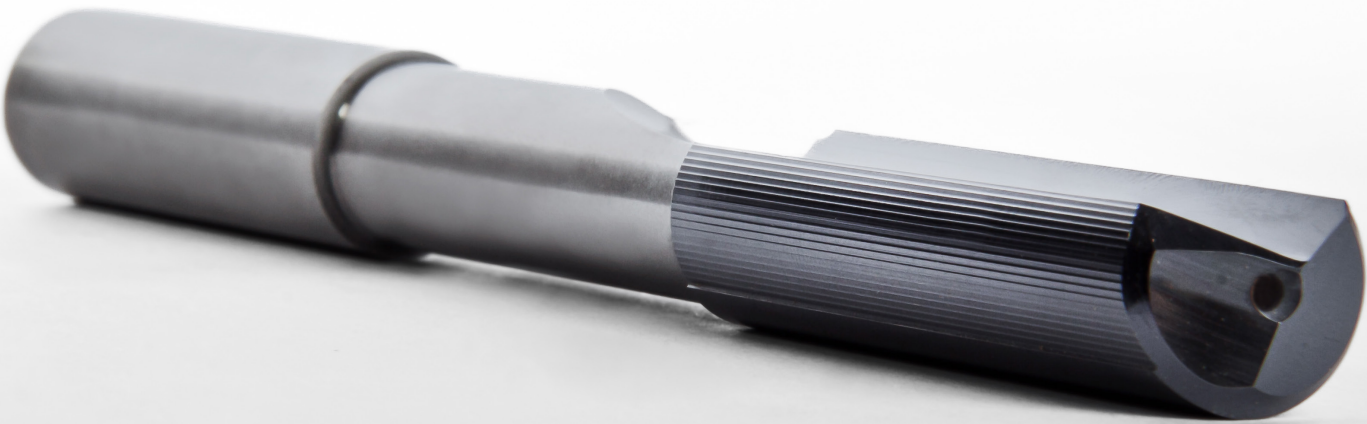
---

**Stocked Tooling      13**

---

**Online Toolbox      14**

---



# WHAT MAKES US DIFFERENT

---

GWS Tool Group is a North American-based, vertically integrated manufacturer of highly engineered custom, standard, and modified standard cutting tools, primarily servicing the aerospace and defense, power generation, automotive and medical sectors.

GWS Tool Group has acquired multiple businesses in the course of its growth which now serve as the respective manufacturing divisions for the company.

The continued expansion of GWS Tool Group by way of acquisitions and constant investment in the business' capabilities has created an explosive value proposition for customers to leverage in all advanced machining environments. We remain committed to the expansion of this value proposition always and in all ways.



# PURSUING THE PERFECT CUTTING TOOL

While GWS offers over 25,000 cutting tools from stock for various milling, holemaking, threading and turning applications, the very core of our *Custom Comes Standard* mantra is knowing that the perfect tool for the job does not always come off a shelf.

**GIVEN TIME REPRESENTS THE GREATEST INPUT COST TO MANUFACTURING, A CUTTING TOOL'S VALUE IS MAXIMIZED WHEN IT DIRECTLY REDUCES THIS INPUT.**

**1%**

**MTA**

Machine tool accessories such as tool holders and work holding.

**4%**

**Tooling**

Cutting tools both solid, round, and indexable type tooling.

**15%**

**Material**

Ferrous and Non-ferrous materials transformed into finished parts.

**30%**

**General**

General costs include electricity, coolant, maintenance and other expenses.

**50%**

**Time**

On average, machining time represents 50% of the costs in the average machining process for any given company.



**TIME IS  
MONEY**

# CORPORATE DEVELOPMENT

Central to our strategy is the acquisition of great companies and the consolidation of those specialties into a singular GWS offering.

The continued expansion of GWS by way of acquisitions and constant investment in world-class technology, equipment and most importantly, people will continue to be our strategy into the future.



Surprise, AZ  
Founded in 1996  
Focus: Aerospace  
Holemaking



ALLIANCECNC  
Grand Rapids, MI  
Founded in 1995  
Focus: Holemaking



Tavares, FL  
Founded in 1984  
Focus: End Mills



Benchmark Carbide  
Springfield, MA  
Founded in 1980  
Focus: HP Milling



North American Tool  
Beloit, IL  
Founded in 1986  
Focus: Threading



CGI Tool  
Chesterfield, IN  
Founded in 1958  
Focus: Inserts

2014

PETERSON TOOL COMPANY

Nashville, TN  
Founded in 1958  
Focus: Turning

**MONSTER**  
Vista, CA  
Founded in 1992  
Focus: GP & HP Carbide

**CJT**  
CJT Koolcarb, Inc.  
Carol Stream, IL  
Founded in 1969  
Focus: Drills

**STP**  
PRECISION  
Asheville, NC  
Founded in 1993  
Focus: PCD Round,  
PCD Insert

**Satax**  
Hartland, WI  
Founded in 1958  
Focus: Taps, Gages

**CTMI**  
Carbide Tools Mfg. Inc.  
Menomonee Falls, WI  
Founded in 1992  
Focus: End Mills, Holemaking

**INDEXABLE**  
Ontario, Canada  
Founded in 1969  
Focus: Ceramic Inserts

**TAURUS**  
TOOL & ENGINEERING  
Batavia, IL  
Founded in 1976  
Focus: Carbide,  
Carbide-Tip Drills



2022

# CORE CAPABILITES

---

## CUSTOM TOOLS



Specially designed cutting tools are required for a variety of reasons; whether it's a little extra length for reach, or specialized forms and tight tolerances to meet difficult part requirements. At GWS, we have built our capabilities around the necessity for high precision and fast expedient service. By combining talented engineering and design staff with the latest in automation technology, GWS can output custom tooling for high production facilities in as little as a few hours.

## MILLING



We have a large portfolio of stocked standard solid carbide end mills, designed for metal cutting applications in an array of industries including Medical, Aerospace, Automotive, Heavy Industry, and General Engineering. If one of our high performance series like our Hurrimill or Alumigator end mills aren't the best fit for your application, we'll help you find the perfect cutting tool by building it custom for you.

## SPECIALTY



The GWS Specialty section encompasses an array of unique metalworking solutions. From routers and burrs, to carbide blanks and the GWS Armory series of tools for defense systems machining, GWS has you covered.





## HOLEMAKING

GWS offers an extensive range of high performance and holemaking solutions. From solid carbide drills to brazed carbide-tip drills, we have the right tool for your application. Need custom drilling solutions? We can quickly create a custom drill perfectly tailored for your application in no time.



## THREADING

The threading solutions category includes everything from thread mills and unique special taps to gages, dies, extensions and drill/tap combos. Be it an odd H-limit or a unique thread form such as ACME or British Pipe, we've got you covered. If we don't have it, we can make in as little as 24 hours.



## TURNING INSERTS

GWS offers a complete insert solution for our customers via a vast standard and custom indexable insert platform. From patented ceramic turning inserts to custom PCD and PCBN inserts, we can provide the perfect insert for your application. Be it custom or standard, GWS has a variety of grades and designs available in carbide, PCD, PCBN and ceramic to enhance productivity and extend tool life.



## TOOL RECONDITIONING

Material costs, manufacturing process time, volume shipping and inventory reductions prove the cost savings of a GWS Re grind. Our cost savings are data-driven, not anecdotal.



# MILLING

# SPECIALTY

# HOLEMAKING

**Roughing**

**Square, Ball, Radius**

**Corner Chamfer**

**Form Tools**

**Keyway Cutters**

**Micro End Mills**

**PCD End Mills**

**Burrs**

**Routers**

**Die Tools**

**Engraving**

**Square Blanks**

**Defense Systems**

**Drills & Reamers**

**PCD Drills**

**Diamond Coated**

**Drills**

**Step Drills**

**X-Long Drills**

**Coolant-fed Drills**

**Countersinks**





# THREADING

# INSERTS

# REGRIND

**Drills & Reamers**

**PCD Drills**

**Diamond Coated Drills**

**Step Drills**

**X-Long Drills**

**Coolant-fed Drills**

**Countersinks**

**Carbide, Ceramic**

**PCD, CBN**

**Top-Notch Inserts**

**Thread Whirling**

**Grooving**

**ISO Inserts**

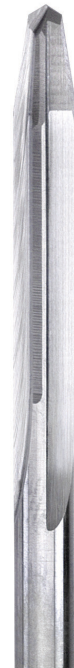
**Drills**

**End Mills**

**Form Tools**

**Inserts**

**PCD/CBN Retip**



# CUSTOM COMES STANDARD

## TYPICAL CUSTOM LEAD TIMES

### ONE WEEK

Standard or modified standard end mills, inserts & drills. Modify existing stock (add flat, undercut, radius, etc).

### TWO WEEKS OR LESS

Standard or modified standard end mills with material in stock. Repeat special/custom with program and material.

### THREE WEEKS OR LESS

Repeat orders of special tools without material in stock.

### FOUR WEEKS OR LESS

Repeat specials requiring pre-form material in stock.

### FIVE TO SIX WEEKS OR LESS

Special/custom requiring pre-form materials that are not in stock.

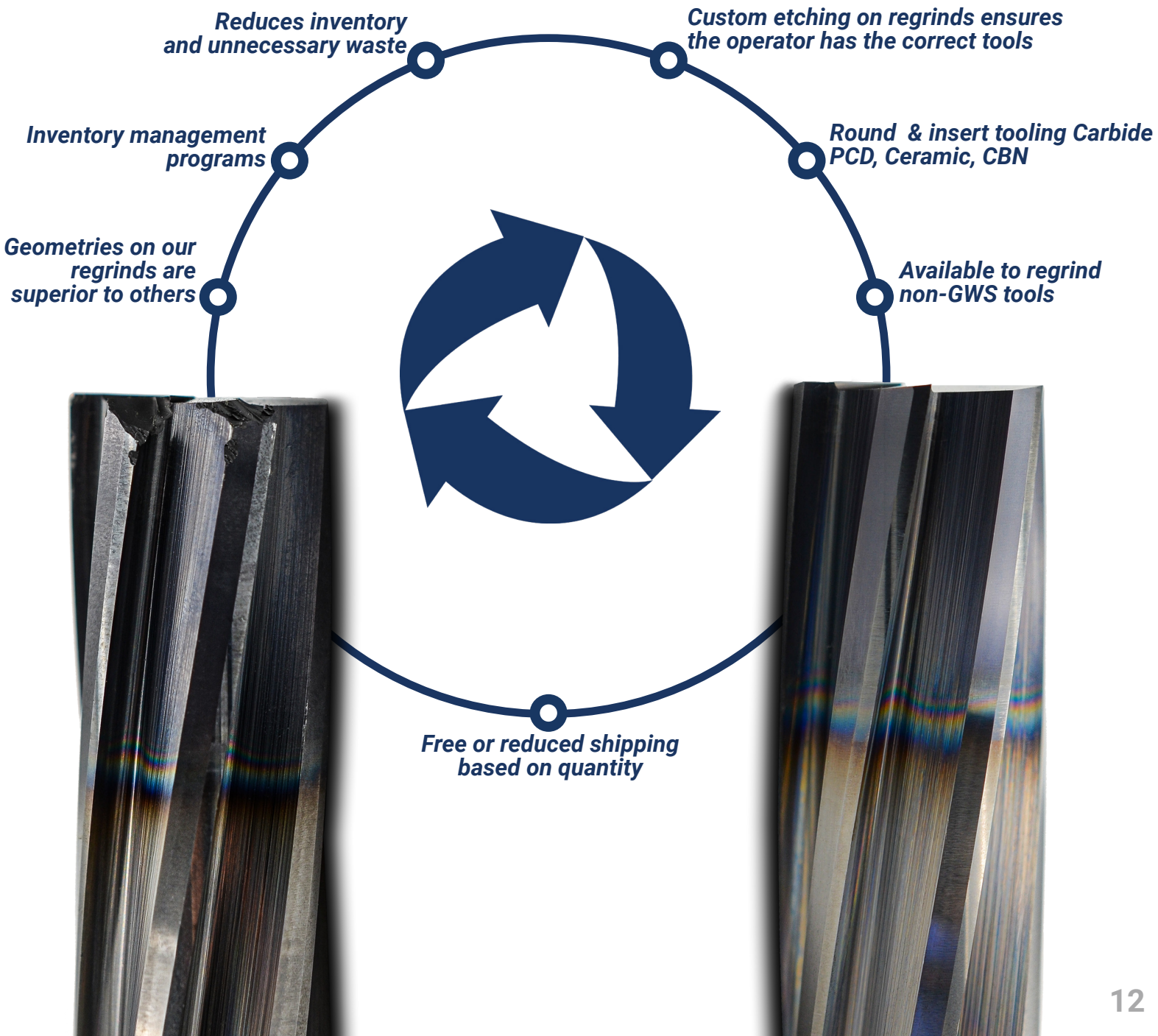
Coating: Add available in-house coating only (3-day max)

Individual lead times subject to change at any time.



# TOOL RECONDITIONING

Form Tools | Step Tools | Variable End Mills | Drills | X-Long Drills  
Broaches | Ceramic Inserts | PCD Inserts | More



# STOCKED TOOLING



On top of our custom solutions platform, GWS also offers an extensive line-up of over 25,000 stocked milling, holemaking, threading, turning, and specialty cutting tools via the GWS Tool Group Product Catalog.

## MILLING

From material specific milling cutters to general purpose end mills, we have it covered with sizes, lengths, and application-specific geometry.



HURRIMILL™ AT4

## HOLEMAKING

High performance holemaking solutions including carbide drills, PAC reamers, chucking reamers, carbide-tip drills, aircraft drills, and GP drills for general engineering.



KOOLTWIST™ DRILL

## THREADING

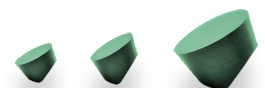
High performance carbide thread mills, new Thredfloor and Thredshaver HP taps, and a complete assortment of general purpose taps, gages, round dies, and specialty threading solutions.



CARBIDE THREAD MILL

## TURNING

A wide array of premium PCD, CBN, and Ceramic ISO inserts for milling and turning applications. Including GWS patented microwave sintered Ceramic technology.



ALLOYCAT™ CERAMIC INSERTS

## SPECIALTY

A complete offering of specialty cutting tools including routers, die tools, burrs, engraving tools, carbide square blanks, and carbide round blanks.



CARBIDE BURRS





# CUSTOM COMES STANDARD

Toll Free: (877) 497-8665 | Phone: (352) 343-8778 | Fax: (352) 343-8311  
Email: [sales@gwstoolgroup.com](mailto:sales@gwstoolgroup.com) | HQ: 595 County Road 448, Tavares, FL 32778

[WWW.GWSTOOLGROUP.COM](http://WWW.GWSTOOLGROUP.COM)