



Norman C. Heckler & Company

Auction 190
Bidding Begins September 21, 2020
Closing September 30, 2020

The Peter Tillou Collection



A Select Absentee Auction of Early Glass, Chestnuts, Pattern Molded Glass, Freeblown and Pressed Glass, Tableware, Colognes, Utilities, & More

*New England Chestnuts in a
Wide Range of Colors and Sizes*



Auction 190

The Peter Tillou Collection

A Select Absentee Auction of Early Glass, Chestnuts, Freeblown and Pressed Glass, Tableware, Pattern Molded Glass, Cognes, Utilities, & More

Auction Start Date: September 21, 2020 at 9:00 A.M. Eastern Time

Auction Closing Date: September 30, 2020 at 10:00 P.M. Eastern Time

Preview by appointment

Reference Key

Reference initials and numbers used in the descriptions of this catalog refer to the following publications:

AAM	<i>Antique American Medicine Bottles, Matt Knapp, 2012.</i>
AG	<i>Antique Glass and Bottles, Willy Van den Bossche, 2001.</i>
AGI & AGII	<i>American Glass, Volumes I and II, Schwartz and DiBartolomeo, 1972.</i>
AP	<i>Glass In Early America, Arlene Palmer, 1993.</i>
ASB	<i>Antique Seal Bottles 1640-1900, David Burton, 2015.</i>
B	<i>Western Whiskey Bottles, #4, R. E. Barnett, 1997.</i>
Barret	<i>Bennington Pottery and Porcelain, Richard C. Barret, 1958.</i>
BB	<i>A.M. Bininger Bottles, Jim Bender, 2017.</i>
B/K	<i>The Glass Industry in Sandwich, Raymond Barlow and Joan Kaiser, 1989.</i>
C	<i>Ink Bottles and Inkwells, William Covill, 1971.</i>
D	<i>American Sarsaparilla Bottles, John DeGrafft, 1980.</i>
DG	<i>American Stoneware Bottles: A History and Study, David Graci, 1995.</i>
G	<i>(Flasks) American Bottles & Flasks (Part VIII), Helen McKearin and Kenneth Wilson, 1978.</i>
G	<i>(Blown Three Mold) American Glass (Chapter VI), George S. and Helen McKearin, 1941.</i>
GW	<i>Glasshouse Whimsies, Joyce Blake and Dale Murschell, 1989.</i>
H	<i>American Bottles in the Charles B. Gardner Collection, Norman C. Heckler, 1975.</i>
JK	<i>The Glass Industry in Boston, Joan Kaiser, 2009.</i>
JLM	<i>TeaKettle Ink Price and Reference Guide, Joe L. Mathews Jr., 2016.</i>
JT	<i>Whiskey Bottles Of The Old West, John L. Thomas, 2002.</i>
K	<i>Poison Bottle Workbook, Rudy Kuhn, 1988.</i>
KW	<i>New England Glass & Glassmaking, Kenneth M. Wilson, 1972.</i>
L	<i>The Red Book of Fruit Jars, No. 10, Douglas M. Leybourne, Jr., 2006.</i>
Lee	<i>American Glass Cup Plates, Ruth Webb Lee and James H. Rose, 1948.</i>
L/P	<i>A Rare Collection of Keene & Stoddard Glass, Lyman and Sally Lane and Joan Pappas, 1970.</i>
McK	<i>American Glass, George S. and Helen McKearin, 1941.</i>
MW	<i>American Bottles & Flasks and Their Ancestry, George McKearin and Kenneth Wilson, 1978.</i>
N	<i>Great American Pontiled Medicines, Frederick Nielson, 1978.</i>
Na	<i>Barber Bottles with Price, Robert Namiat, 1977.</i>
NCH	<i>The Blaske Collection of American Flasks, Norman C. Heckler, 1983.</i>
NCH II	<i>The Blaske Collection: Part II, Norman C. Heckler, 1983.</i>
Neal	<i>Pressed Glass Salt Dishes of the Lacy Period 1825-1850, L. W. and D. B. Neal, 1962.</i>
P	<i>The Glass Gaffers of New Jersey, Adeline Pepper, 1971.</i>
PG	<i>Pittsburgh Glass, Lowell Innes, 1976.</i>
PME	<i>Pontil Medicine Encyclopedia (Second Edition), John Odell, 2007.</i>
R/H	<i>Bitters Bottles, Carlyn Ring and W. C. Ham, 1998.</i>
RD	<i>Understanding Antique Wine Bottles, Roger Dumbrell, 1983.</i>
SVR	<i>Early American Bottles and Flasks, Stephen Van Rensselaer, 1927.</i>
T	<i>Collectors Guide to Saratoga Type Mineral Water Bottles, Donald Tucker, 2005.</i>
TH	<i>Two Hundred Years Of American Blown Glass, Helen and George McKearin, 1949.</i>
U	<i>Collectible Character Bottles, Arthur & Jewel Umberger, 1969.</i>
WB	<i>Early CT Soda Proprietors & Their Bottles, William G. Beckett, 2018.</i>
Z	<i>Ketchup, Pickles, Sauces, Betty Zumwalt, 1980.</i>

- The dash is generally used to indicate that the descriptions are on opposite sides of the bottle or flask.

/ The slash is used to indicate that the descriptions are on different lines or surfaces of the bottle.

CONDITIONS OF SALE

- Absentee Auction:** The items in this auction will be sold at unreserved absentee auction, opening date Monday, September 21, 2020 at 9:00 AM Eastern (6:00 AM Pacific) closing date Wednesday, September 30, 2020 at 10:00 PM Eastern (7:00 PM Pacific) in a Timed Closing (see below).
- Descriptions:** Norman C. Heckler & Company has made every attempt to describe correctly the property being sold. Descriptions are guaranteed to be accurate as regards authenticity, age, condition, and measurements to within one-fourth inch, as represented in this auction. When describing damage, we may choose not to list exterior wear or manufacturer's flaws that, in our opinion, do not significantly detract visually or monetarily from the value of the item. It is recommended that you or a representative examine each item in person before bidding. We are pleased to provide verbal condition reports for our bidders. The Auctioneers reserve the right to make corrections and provide additional information at any time during the sale.
- Preview:** Items may be viewed by appointment at our offices.
- Bidding Procedure:** Bidding on an item may be done in one of five ways: 1. Internet Bidding, 2. Telephone Bidding, 3. Bidding by Postal Mail (we urge you to send your mail bids as early as possible), 4. Bidding by Fax (at least 2 days in advance), 5. Bidding by Email (valid only if bid is confirmed by Norman C. Heckler & Company).

Bidding via the Internet is strongly recommended.

We are pleased to receive bids by telephone so that we can answer any questions and assist you in your bidding. You may telephone us at any time (weekdays 9 AM - 5 PM) during the auction, prior to the closing of the sale, to check the status of your bids, to find the current bidding level, to open a bid, or to raise a bid on an auction lot. (These actions are also available as part of our internet bidding system).

Your bid, written, oral or electronic, grants Norman C. Heckler & Company the authority to protect you up to the amount of your stated bid. Your bid will not be removed once executed.

Norman C. Heckler & Company will not disclose bids pledged by others; only the current bidding level of a lot will be available.

The highest bidder shall prevail. It is the sole right of the auctioneer to settle any dispute between bidders and to regulate the bidding procedure. The auctioneer reserves the right to refuse any bid believed not to have been made in good faith.

Each lot in the sale has an estimate based on current value as an intended guide to bidding.

MINIMUM BID IS ONE-HALF THE LOW ESTIMATE

Increments are as follows:

Up to \$250.00.....increments of \$10.00	\$250.00 - \$500.00.....increments of \$25.00	\$500.00 - \$1000.00.....increments of \$50.00
\$1000.00 - \$2500.00.....increments of \$100.00	\$2500.00 - \$5000.00.....increments of \$250.00	\$5000.00 - \$10000.00.....increments of \$500.00
	\$10,000 & Up.....increments of \$1000.00	

An example - You bid \$900.00 on a lot which is the highest bid received to date. The second highest bid is \$550.00. The current high bidding level would be yours at \$600.00. Any other bids submitted by others below \$900.00 will be advanced automatically in the auction system.

Incoming bids will be accepted on the closing day until 10 PM Eastern (7 PM Pacific). Only online bids will be accepted after 10 PM Eastern (7 PM Pacific) for auction lots that are still open.

TIMED CLOSING: This auction will close at 10:00 PM Eastern on the last day of the sale; however, if there are successful bids on individual items within the last 10 minutes (9:50 - 10:00 PM.), then the auction will continue for those individual items. For each item that has received bids in the last 10 minutes, the closing of the item is extended until there are no further bids for a continuous 10 minute period. Lots that have no bidding activity in the last 10 minutes will close at 10:00 PM Eastern.

5. **Call Back Process:** There are no "Call Backs" for this auction.

6. **Successful Bidders:** Successful bidders will be notified both by email and postal mail. A 17% buyer's premium will be added to the closing price to be paid by the buyer as part of the purchase price. Payment is due immediately upon receipt of notification of purchase. No exceptions. Accepted forms of payment are bank check, personal check, cash, or money order. Bank check or money order will facilitate immediate processing. If you pay with uncertified funds, Heckler may not ship items until ten business days have passed from the deposit date. If you see that your check has cleared, you may send front and back copies of the canceled check, and Hecklers will remove the shipping hold. If you are a Connecticut resident, a 6.35% sales tax will be added to your bill, unless you provide Norman C. Heckler & Company with a tax exemption permit. Sales tax is also applicable to out of state buyers who pick up their purchases at our location unless you have a tax exempt number from Connecticut or your state on file with us.

All purchases and transactions must be in U.S. Dollars.

7. **Shipping:** Purchases will be shipped only after full payment has been received. All items will be shipped via United States Postal Service. Shipping, handling and insurance are extra. Our shipping charges for most glass items and accessories (excluding foreign shipments) are \$20.00 for the first item, \$9.00 for each additional item together with insurance costs (\$0.60 per \$100.00). Additional charges may apply for large or unusually shaped items, and/or certain postal zones which USPS attaches a surcharge. Some items may require transport through a fine arts carrier which can be arranged by the buyer or with Norman C. Heckler & Company. We encourage you to plan for a pickup of your items at our offices.

8. **Refunds:** Refunds will be given at the discretion of the Auctioneers. Items purchased must be examined and a request for refund made immediately upon receipt of the items. The Auctioneers will be the sole judge in consideration of refunds. It is the Auctioneers sincere intention to consider any reasonable request for a refund pertaining to a major oversight in the description of an object (ie: large epoxy repairs, large chips, extensive cracks, etc.) and not nuances of color, minute flaws, or normal antique "fair wear and tear".

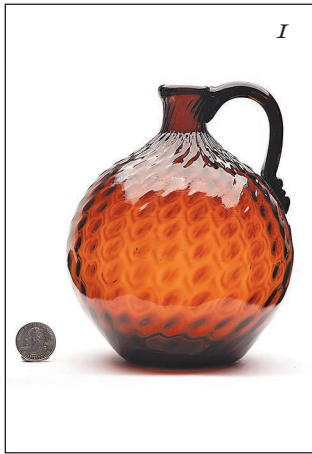
9. **Administration:** If at any time during the auction period an act or circumstance takes place which impedes or affects the normal auction process, the auction can be postponed or terminated at the auctioneer's discretion.

10. **Terms:** Bidding on any item indicates your acceptance of these terms.



Norman C. Heckler & Company

Auctioneers and Appraisers of Antique Bottles and Glass, Period Decorative Arts, Singular Art Objects, and Estates
79 Bradford Corner Road, Woodstock Valley, CT 06282 p:(860) 974-1634 www.hecklerauction.com f:(860) 974-2003



1. **Pattern Molded Handled Jug**, ribbed and swirled to the right, 24 ribs, a Zanesville glasshouse, Zanesville, Ohio, 1820-1840. Globular with applied solid handle, medium orange amber with some reddish tones, inward rolled mouth - pontil scar, ht. 6 1/4 inches, greatest dia. 5 inches; (handle rigaree has been broken away, 1/4 inch star fissure at lower body). Similar in form and construction to MW color plate V, #5 A rare, beautiful form in a larger than usual size. \$3000-6000



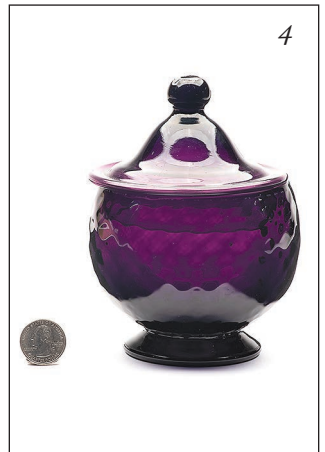
2. **Pattern Molded Celery Vase**, 8 vertical ribs tightly swirled to the right around the rim, probably Pittsburgh district, Pittsburgh, Pennsylvania, 1830-1850. Cylindrical flaring vase on applied solid circular foot, brilliant light sapphire blue, tooled flared rim - pontil scar, ht. 8 7/8 inches, greatest dia. 5 3/8 inches; (two faint cooling fissures on one panel, the largest being 1/2 inch).

McK plate 53, #4 A wonderful piece showing the skills of a talented glassblower. Generally fine condition. \$1500-3000



3. **Pair Of Pressed Glass Fluid Lamps**, arch pattern, three piece construction with wafer, possibly Mount Washington Glass Works, South Boston, Massachusetts, 1845-1860. Paneled cylindrical fonts on hexagonal bases, brilliant cobalt blue, threaded brass and pewter burners - pontil scars, ht. 10 3/4 inches and 12 inches, base dia. 4 1/4 inches; (minor manufacturing flakes on edges of bases).

JK fig. 200 A wonderful pair in vibrant color. This is also known as the "B.V." pattern. Fine condition. \$1000-2000



4. **Pattern Molded Covered Sugar Bowl**, 24 expanded diamond pattern, possibly Stiegel's American Flint Glass Manufactory, Manheim, Pennsylvania, 1763-1774. Bulbous form with applied solid circular foot, freeblown unpatterned cover with tooled rim and solid knob, pontil scar on knob of cover, medium to deep amethyst, tooled rim - polished pontil scar on base, ht. with cover 5 3/4 inches, greatest dia. 4 1/4 inches. Similar in form and construction to McK plate 31, #3 Lid not original to the bowl. Fine condition. \$300-600



5. **Blown Three Mold Decanter**, probably England, 1815-1830. Square with beveled corners, rich yellowish emerald green, flared mouth with pour spout, solid pattern molded stopper with 16 ribs - polished pontil scar, ht. with stopper 7 7/8 inches.

GII-28 Strong mold impression and brilliant color. Fine condition. \$600-1200

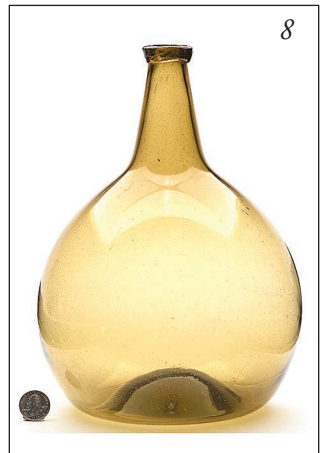


6. **Freeblown Witch Ball**, possibly Boston and Sandwich Glass Works, Sandwich, Massachusetts, 1840-1860. Spherical, white milk glass with light blue loopings, rough mouth opening - smooth base, dia. 5 1/4 inches. Similar to B/K #3229 Fine condition. \$150-300



7. **Freeblown Pitcher**, 6 Type II lily-pad decorations, probably New York state, 1820-1840. Flowerpot form flaring to rim with applied threading around neck and solid handle, rich bluish aquamarine, tooled flared rim with pour spout - pontil scar, ht. 6 1/2 inches, greatest dia. 4 1/4 inches; (3 inch crack around upper handle attachment, light exterior high point wear, 1/8 inch chip to one lily-pad decoration).

Similar in form and construction to McK plate 20, #4 A wonderfully crafted early American form. \$750-1500



8. **Freeblown Globular Bottle**, New England, 1783-1830. Bulbous form, bright yellow with an olive hue, applied heavy collared mouth - pontil scar, ht. 11 1/4 inches, greatest dia. 7 3/4 inches; (just a hint of exterior high point wear).

Similar in form and construction to MW color plate III, top left A spectacular bottle in color and condition. \$400-800



9

9. **Pair Of Pressed Glass Fluid Lamps**, New England, 1840-1860. Elongated loop font on hexagonal base, medium amethyst, threaded pewter collars - smooth bases, ht. 9 1/2 inches, base dia. 4 3/8 inches. Similar in form and construction to JK #94 Exceptional in every way. Fine condition. \$400-800



10

10. **Pair Of Freeblown Witch Balls And Stands**, possibly Pittsburgh district, Pittsburgh, Pennsylvania, 1840-1860. Ewer form with applied solid stem and circular foot, applied neck rings, colorless with opaque milk glass loopings, colorless foot and neck rings, heavy outward folded rims - polished pontil scars on stands, rough sheared openings on witch balls, ht. with witch balls 20 inches and 20 1/4 inches, greatest dia. of stand 4 5/8 inches, witch ball dia. 6 7/8 inches. Similar construction techniques are noted on PG plate 48 and plate 49 A most impressive pair in size and form. Fine condition. \$500-1000



11

11. **Pattern Molded Globular Bottle**, 24 ribs swirled to the left, a Zanesville glasshouse, Zanesville, Ohio, 1820-1840. Bulbous form, bluish aquamarine, outward folded mouth - pontil scar, ht. 8 inches, greatest dia. 5 1/8 inches; (light exterior high point wear). Similar in form and construction to MW color plate V, #1 Fine condition. \$300-600



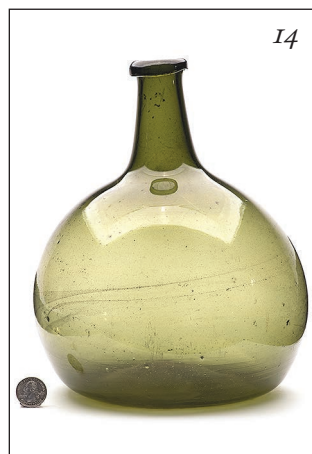
12

12. **Lot Of Four Pressed Glass Shot Glasses**, probably New England, 1840-1860. Cylindrical flaring to rim, opaque light blue, plum amethyst, cobalt blue and brilliant peacock blue, tooled rims - one is pontiled, ht. 2 1/8 inches, (2) 2 1/2 inches and 2 7/8 inches; (cobalt example has 1/8 inch chip on edge of base.). JK plate 139 A lovely lot with some fantastic colors. Generally fine condition. \$150-300



13

13. **Freeblown Pitcher**, possibly a South Jersey glasshouse, 1840-1860. Bulbous form flaring to rim with applied solid circular foot and solid handle, medium amber, tooled flared rim with pour spout - pontil scar, ht. 7 inches, greatest dia. 4 3/8 inches; (light scattered exterior wear marks). Similar in form to P plate 6, left A simple and graceful form. Fine condition. \$500-1000



14

14. **Freeblown Globular Bottle**, New England, 1783-1830. Bulbous form, medium olive green, applied round collared mouth - pontil scar, ht. 10 1/2 inches, greatest dia. 8 1/8 inches; (two light exterior surface scratches). Similar in form and construction to MW color plate III, top left This example has a wider neck and mouth than most, as well as, swirls of foamy bubbles. Fine condition. \$400-800



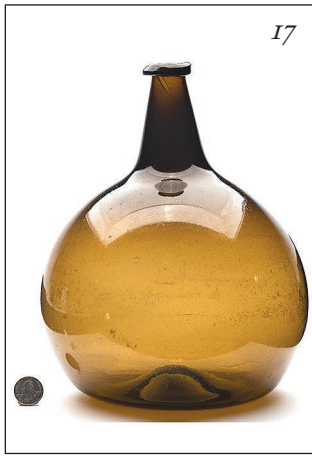
15

15. **Pressed Glass Vase**, elongated loop pattern, three piece mold construction, probably New England Glass Company, Cambridge, Massachusetts, 1840-1860. Trumpet form vase with hexagonal base, medium emerald green, tooled flared gauffered rim - smooth base, ht. 11 5/8 inches, greatest dia. 4 5/8 inches. Similar in form to B/K #3026 A scarce color for this form. Fine condition. \$400-800



16

16. **Freeblown Covered Sugar Bowl**, probably Midwest America, 1830-1850. Bulbous form with applied solid circular foot, domed cover with applied knob finial, pontil scar on finial, colorless with milk glass loopings and rim, tooled flared galleried rim - pontil scar, ht. with cover 6 3/4 inches, greatest dia. 4 7/8 inches. Similar in form and construction to PG plate 48 A very eye appealing sugar bowl with unusual form and "tighter" than normal looping decoration. Fine condition. \$1000-2000



17

17. **Freeblown Globular Bottle**, New England, 1783-1830. Bulbous form, medium to deep olive amber, applied round collared mouth - pontil scar, ht. 11 inches, greatest dia. 8 1/4 inches; (moderate exterior wear at mid body).

Similar in form and construction to MW color plate III, top left Classic New England form and color. Glass is awash in foamy bubbles. Fine condition. \$400-800



18

18. **Blown Molded Back Bar Bottle**, three piece mold construction, probably Pittsburgh district, Pittsburgh, Pennsylvania, 1840-1860. Bulbous form with Gothic arch pattern, rich sapphire blue with teal tones, heavy applied double collared mouth - polished pontil scar, ht. 10 1/4 inches; (light exterior high point wear).

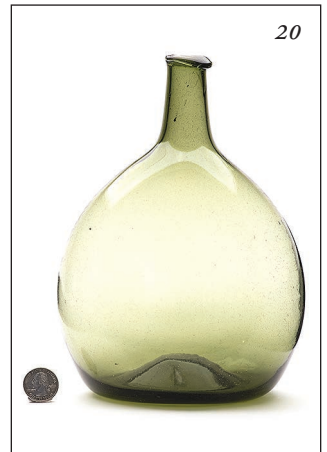
American Glass 1760-1930 The Toledo Museum Of Art Vol. 2, fig. 893 A wonderful decanter with a big, bold mold design and beautiful blue color. Fine condition. \$600-1200



19

19. **Pattern Molded Compote**, Pittsburgh district, Pittsburgh, Pennsylvania, 1840-1860. Cylindrical bowl with 8 vertical ribs on applied heavy baluster stem and slightly domed circular foot, colorless, tooled rim with applied corrugated band - pontil scar, ht. 6 inches, greatest dia. 7 1/2 inches; (light exterior high point wear).

Similar in form and construction to PG plate 180, #2 An attractive piece of early American blown tableware. Fine condition. \$200-400



20

20. **Freeblown Chestnut Bottle**, New England, 1783-1830. Light to medium forest green, applied round collared mouth - pontil scar, ht. 9 1/4 inches.

Similar in form and construction to KW plate 47, #2 A pristine example with a wonderful form and color. Fine condition. \$200-400



21

21. **Pressed Glass Tumbler**, possibly New England Glass Company, Cambridge, Massachusetts, 1840-1860. Hexagonal base flaring to cylindrical rim, brilliant yellow green, tooled rim - pontil scar, ht. 3 1/4 inches, greatest dia. 3 1/4 inches; (two shallow manufacturing chips on edge of base, the largest being 3/4 inch).

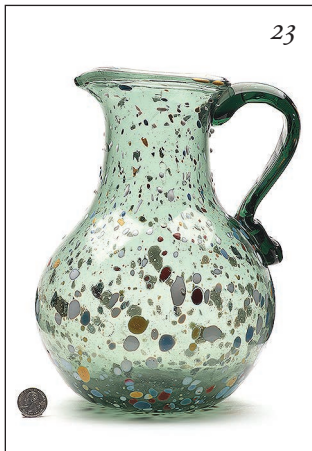
JK plate 138 A rare and beautiful color. With the exception of the base chips, this example is wear free. Generally fine condition. \$100-200



22

22. **Freeblown Witch Ball**, possibly Boston and Sandwich Glass Works, Sandwich, Massachusetts, 1840-1860. Spherical, white milk glass with red loopings, rough mouth opening - smooth base, dia. 4 inches.

Similar to B/K #3229 Fine condition. \$200-400



23

23. **Large Freeblown Pitcher**, probably England, 1820-1840. Bulbous form flaring to rim with applied solid handle, medium yellowish green with multicolor splotches, tooled flared rim with pour spout - pontil scar, ht. 11 inches, greatest dia. 7 3/8 inches; (light exterior high point wear, several exterior splotches have loss of cover glass).

A most impressive piece in color and size. Fine condition. \$400-800



24

24. **Pattern Molded Celery Vase**, 8 vertical ribs, probably Pittsburgh district, Pittsburgh, Pennsylvania, 1840-1860. Trumpet form vase on hollow knob stem and applied solid circular foot, rich amethyst with applied white milk glass strings on the pillars, tooled flared rim - polished pontil scar, ht. 10 inches, greatest dia. 5 1/2 inches.

Similar in form and construction to PG plate 180, #3 Exquisite. Fine condition. \$2000-4000



25

25. **Freeblown Drinking Vessel**, Europe, Alpine Region, 1800-1830. Cylindrical flaring to rim, bright medium amethyst with multicolor enamel decorations, tooled rim - pontil scar, ht. 2 5/8 inches, greatest dia. 2 3/8 inches; (shallow 1/2 inch flake on edge of base). Similar decorating techniques are noted on AG plate 223 and 224 Enamel decorations depict a bird, two crosses and flowers. Generally fine condition. \$100-200



26

26. **Pattern Molded Celery Vase**, 12 panels around base, Pittsburgh district, Pittsburgh, Pennsylvania, 1830-1850. Bulbous form with applied knob stem and solid circular foot, colorless, tooled flared rim - pontil scar, ht. 8 3/8 inches, greatest dia. 4 1/2 inches; (light exterior high point wear). Similar in form and construction to PG plate 128 A pleasing size and form with unusual tooling marks around the neck. Fine condition. \$300-600



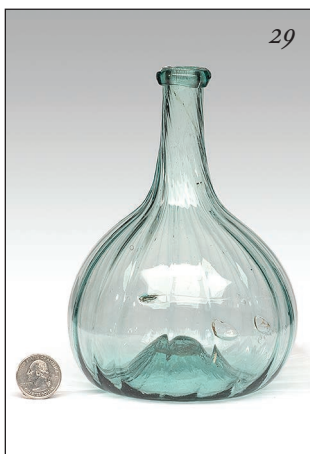
27

27. **Freeblown Witch Ball And Stand**, possibly Pittsburgh district, Pittsburgh, Pennsylvania, 1840-1860. Bulbous form flaring to rim with compressed knob stem and applied solid circular foot, colorless with white milk glass loopings, colorless applied foot and stem, tooled flared rim - pontil scar on base of stand, rough sheared opening on witch ball, ht. with witch ball 14 1/2 inches, greatest dia. of stand 5 3/4 inches, witch ball dia. 7 3/8 inches; (1/4 inch chip on rim of stand). Similar in form and construction to PG plate 476 and 478 A stout stand with one of the larger witch balls we have seen. \$250-500



28

28. **Pattern Molded Cruet**, 24 vertical ribs, Pittsburgh district, Pittsburgh, Pennsylvania, 1820-1840. Bulbous form with an applied hollow handle, bright cobalt blue, tooled flared mouth with pour spout and blown hollow stopper - pontil scar, ht. with stopper 7 inches, greatest dia. 3 3/8 inches; (handle rigaree has been broken away). Similar in form and construction to PG plate 179, #2 A graceful early form and wonderful bright color. Generally fine condition. \$150-300



29

29. **Pattern Molded Globular Bottle**, 18 vertical ribs, Midwest America, 1820-1840. Bulbous form, aquamarine, applied round collared mouth - pontil scar, ht. 6 7/8 inches, greatest dia. 4 3/4 inches; (two shallow 1/2 inch open surface bubbles at mid body). Similar in form and construction to McK plate 236, #4 Scarce form, scarce rib count, beautiful bottle. Fine condition. \$200-400



30

30. **Freeblown Glass Powder Horn**, Pittsburgh district, Pittsburgh, Pennsylvania, 1840-1860. Powder horn form with applied neck ring and finial knob, colorless with light cobalt blue and white loopings, applied double collared mouth - pontil scar, lgth. 13 inches. Similar in form and construction to PG plate 46, right center Fine condition. \$150-300



31

31. **Freeblown Creamer**, possibly early Pittsburgh district, Pittsburgh, Pennsylvania, 1820-1840. Bulbous form flaring to rim with applied solid circular foot and solid handle, medium violet, tooled flared rim with pour spout - pontil scar, ht. 3 7/8 inches, greatest dia. 2 5/8 inches. Similar in form and construction to McK plate 13, #9 Wonderful form and color. Fine condition. \$200-400



32

32. **Freeblown Chestnut Bottle**, New England, 1783-1830. Medium olive yellow, applied round collared mouth - pontil scar, ht. 7 inches; (just a hint of exterior wear near the base). Similar in form to KW fig. 47 Interesting surface swirls and small bubbles. Fine condition. \$200-400



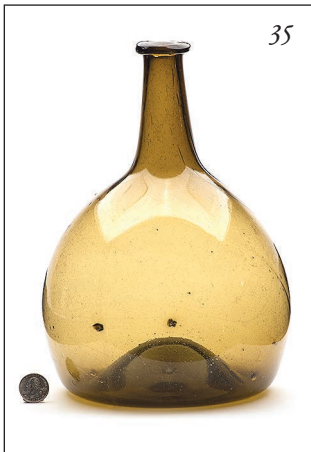
33

33. **Freeblown Witch Ball**, possibly Boston and Sandwich Glass Works, Sandwich, Massachusetts, 1840-1860. Spherical, colorless with red and opaque milk glass loopings, pontil scar, dia. 2 3/4 inches. Similar to B/K #3227 Interesting and beautiful decorations. Fine condition. \$150-300



34

34. **Pair Of Pressed Glass Tulip Vases**, Boston and Sandwich Glass Works, Sandwich, Massachusetts, 1845-1865. Octagonal tulip form attached with wafer to an octagonal base, bright medium emerald green, tooled flared scalloped rims - smooth bases, ht. 10 inches, greatest dia. 5 inches; (one example has 1/2 inch chip on edge of base). Similar in form and construction to B/K #3021 Type b Usually these are sold as single items, it's a pleasure to offer this beautiful pair. Generally fine condition. \$1200-2400



35

35. **Freeblown Globular Bottle**, New England, 1783-1830. Bulbous form, medium yellow olive, applied round collared mouth - pontil scar, ht. 11 3/8 inches, greatest dia. 7 1/2 inches; (faint 1 inch "star" fissure on shoulder). Similar in form and construction to MW color plate III, top left An eye catching example with surface swirls and a bright color. \$200-400



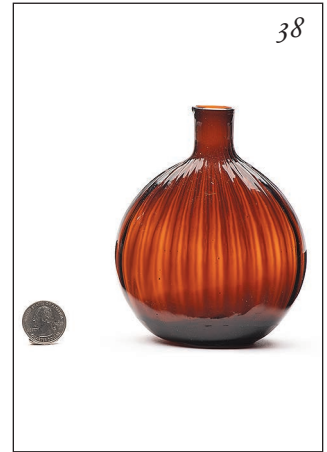
36

36. **Freeblown Covered Apothecary Storage Jar**, possibly Pittsburgh district, Pittsburgh, Pennsylvania, 1840-1860. Cylindrical with two applied bands on body, domed cover with applied band, hollow knob and button finial, colorless with cobalt blue bands and button finial, tooled rim - pontil scar, ht. with cover 12 1/2 inches, greatest dia. 6 inches; (two 1/2 inch interior surface bubbles have partial loss of cover glass). The simple design and cobalt bands make this an eye appealing example. Generally fine condition. \$200-400



37

37. **Pattern Molded Utility Bottle**, blown in the German half post method, 26 broken ribs swirled to the right, possibly Austria, circa 1720. Square with concave corners, light blue green, flared mouth - pontil scar, ht. 9 1/8 inches. A similar example is pictured on the cover of AG A most unusual form with eggshell thin glass. Fine condition. \$200-400



38

38. **Pattern Molded Pocket Flask**, 24 vertical ribs, probably a Zanesville glasshouse, Zanesville, Ohio, 1820-1840. Flattened chestnut form, rich orange amber, sheared mouth - pontil scar, ht. 5 inches; (1/4 inch chip on side of mouth, 1/8 inch open surface bubble). Similar in form and construction to McK plate 235, #23 A pretty little flask with attractive thicker glass and surface swirls around the base and lower body. \$100-200



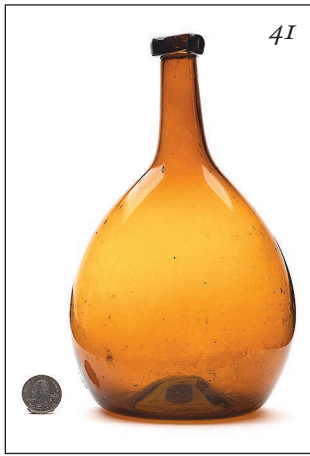
39

39. **Pressed Glass Back Bar Bottle**, Boston and Sandwich Glass Works, Sandwich, Massachusetts, 1840-1860. Octagonal base flaring to shoulder, medium amethyst, heavy applied double collared mouth - polished pontil scar, ht. 10 1/8 inches; (two 1/16 inch surface bruises on top of arched panels, light exterior high point wear). B/K #1256b A beautiful rich color. Generally fine condition. \$400-800



40

40. **Freeblown Mug**, Midwest America or South Jersey, 1840-1860. Bulbous form with applied solid circular base and applied solid handle, colorless with opaque milk glass loopings, tooled flared rim - pontil scar, ht. 6 7/8 inches, greatest dia. 4 1/2 inches. Similar in form and construction to McK plate 21, #7 A simple form with attractive decorations. Fine condition. \$200-400



41. **Freeblown Chestnut Bottle**, probably America, 1800-1830. Bright medium orange amber, applied heavy collared mouth with two "crimps" - pontil scar, ht. 9 inches; (light exterior wear marks). Similar in form and construction to McK plate 224, #11 A rare and beautiful color for this form. Fine condition. \$200-400



42. **Freeblown Vase**, Midwest America, 1840-1860. Bulbous form with tooled ring at mid body flaring to rim on applied knop stem with solid circular base, colorless with opaque milk glass loopings and a ruby red rim, tooled flared gauffered rim - pontil scar, ht. 10 inches, greatest dia. 4 3/4 inches. Similar in form and construction to PG plate 49 Beautiful and elegant. Fine condition. \$400-800



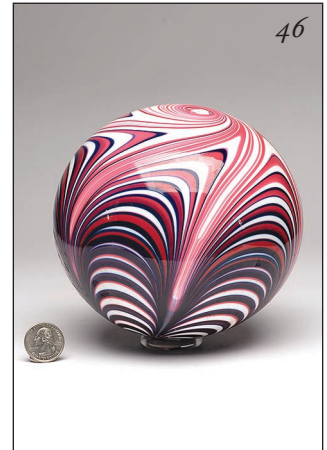
43. **Blown Molded Back Bar Bottle**, possibly Boston and Sandwich Glass Works, Sandwich, Massachusetts, 1840-1860. Twelve sided flaring to shoulder, medium to deep emerald green, heavy applied double collared mouth - polished pontil scar, ht. 10 inches; (pinpoint surface bruise on the edge of one panel, light exterior high point wear). Similar in form and construction to B/K #1256 The combination of the oversized top and beautiful green color is striking. Generally fine condition. \$500-1000



44. **Pressed Glass Candlestick**, Boston and Sandwich Glass Works, Sandwich, Massachusetts, 1840-1860. Loop base with hexagonal socket, medium to deep grape amethyst, pontil scar, ht. 6 7/8 inches, base dia. 4 3/4 inches; (1 1/8 inch surface bruise on edge of base). B/K #4037 Attractive shading and rich color. Generally fine condition. \$200-400



45. **Pressed Glass Tumbler**, possibly New England Glass Company, Cambridge, Massachusetts, 1840-1860. Cylindrical with seven concave arched panels around base, bright peacock blue, tooled rim - polished pontil scar, ht. 3 1/8 inches, greatest dia. 2 7/8 inches. Similar in form and construction to JK plate 138 Beautiful glass clarity and brilliant color. Fine condition. \$100-200



46. **Freeblown Witch Ball**, possibly Boston and Sandwich Glass Works, Sandwich, Massachusetts, 1840-1860. Spherical, white milk glass with blue and red loopings, rough mouth opening - smooth base, dia. 5 1/2 inches. Similar to B/K #3234 and 3235 Fine condition. \$250-500



47. **Pattern Molded Vase**, twelve panels from base to mid body, New England, 1840-1860. Bulbous form flaring to shoulders with dramatic outward tooled rim, colorless, outward rolled rim - pontil scar, ht. 8 3/8 inches, greatest dia. 4 7/8 inches; (thin watermark haze at upper body). Similar forms are noted on McK plate 33 One of a few known examples in colorless glass. Fine condition. \$600-1200



48. **Freeblown Globular Bottle**, New England, 1783-1830. Bulbous form, medium yellow olive, applied round collared mouth - pontil scar, ht. 10 3/8 inches, greatest dia. 8 1/8 inches; (light exterior high point wear, a 2 1/2 inch interior surface bubble has lost most of it's cover glass). Similar in form and construction to MW color plate III, top left Sinewy strings of glass wind their way around the bottle. Generally fine condition. \$400-800



49

49. **Freeblown Covered Sugar Bowl**, possibly a South Jersey glasshouse, 1820-1840. Bulbous form with applied solid circular foot, domed cover with tooled rim, applied wafer and finial, brilliant medium emerald green, tooled galleried rim - pontil scar, ht. with cover 6 1/4 inches, greatest dia. 5 1/8 inches; (1/4 inch chip on inner rim of cover). Similar in form and construction to P plate 8, left Exquisite color and beautiful early form. Fine condition. \$750-1500



50

50. **Freeblown Serving Bowl**, probably Midwest America, 1820-1840. Cylindrical flaring to rim, bluish aquamarine, tooled outward folded rim - pontil scar, ht. 5 inches, greatest dia. 9 1/8 inches; (light interior and exterior wear). Similar in form and construction to PG plate 30 A simple and early piece of utilitarian American tableware. Fine condition. \$200-400



51

51. **Pitkin Type Flask**, ribbed and swirled to the left, 36 ribs, Midwest America, 1820-1830. Flattened coin form, medium to deep yellowish amber, sheared mouth - tubular pontil scar, ht. 5 7/8 inches; (light exterior high point wear). Similar in form and construction to MW color plate IV, #2 A pleasing early form with a strong mold impression. Fine condition. \$400-800



52

52. **Freeblown Chestnut Bottle**, New England, 1783-1830. Brilliant yellow with an olive tone, applied round collared mouth - pontil scar, ht. 5 inches; (3/8 inch cooling fissure across potstone near shoulder). Similar in form and construction to KW plate 47, #5 A plump little beauty in a vivid color. \$100-200



53

53. **Freeblown Bottle**, possibly Midwest America, 1840-1860. Cylindrical with applied band on shoulder, colorless with white milk glass loopings, colorless applied band, tooled flared mouth - pontil scar, ht. 12 1/4 inches, greatest dia. 3 1/2 inches. Similar construction techniques are noted on PG plates 48 and 49 Fine condition. \$100-200



54

54. **Pressed Glass Vase**, four printie block pattern, three piece construction with wafer, Boston and Sandwich Glass Works, Sandwich, Massachusetts, 1840-1860. Trumpet form vase attached with wafer on hexagonal base, medium amethyst, tooled flared gauffered rim - smooth base, ht. 11 1/2 inches, greatest dia. 4 5/8 inches; (several chips on edge of base, the largest being 2 inches). B/K #3037, left One of the largest commercial vases made in Sandwich. Generally fine condition. \$350-700



55

55. **Back Bar Whiskey Decanter**, two piece mold construction, possibly Pittsburgh district, Pittsburgh, Pennsylvania, 1860-1880. Octagonal tapering to neck ring, deep cobalt blue, polished mouth with pewter cap - smooth base, ht. with cap 11 inches; (moderate exterior wear, four 1/16 inch flakes on edges of panels). Generally fine condition. \$100-200

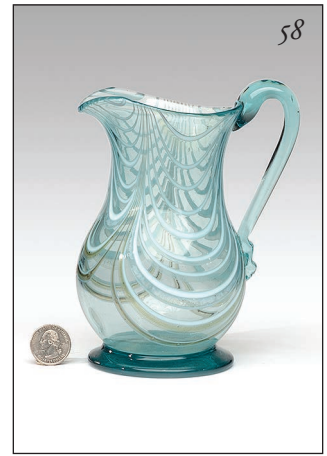


56

56. **Pair Of Freeblown Witch Ball Stands**, possibly a South Jersey glasshouse, 1840-1860. Bulbous form flaring to rim with bell form base, bright yellowish orange amber, tooled flared rims - inward folded bases, ht. 9 1/8 inches and 9 3/8 inches, greatest dia. 3 7/8 inches; (one example has shallow flake on rim of base). Similar to P fig. 1 Graceful and elegant. \$300-600



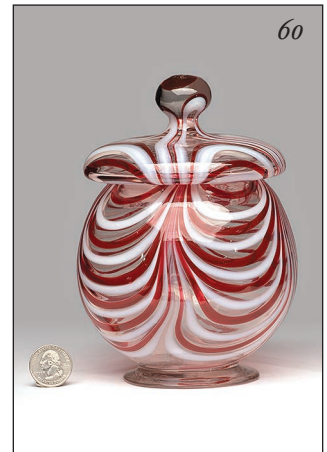
57. **Pressed Glass Back Bar Bottle**, possibly Pittsburgh district, Pittsburgh, Pennsylvania, 1840-1860. Cylindrical with 10 raised elongated oval panels and fluted shoulders, medium to deep amethyst, heavy applied double collared mouth - polished pontil scar, ht. 10 1/2 inches; (exterior high point wear at top of oval panels). Similar in construction to American Glass 1760-1930 The Toledo Museum Of Art Vol. 1 fig 893 An unlisted form in a beautiful color. Fine condition. \$500-1000



58. **Freeblown Pitcher**, possibly a New Jersey glasshouse, 1860-1870. Bulbous body flaring to rim with applied solid circular base and applied solid handle, rich aquamarine with opaque white and olive green loopings, tooled flared rim with pour spout - pontil scar, ht. 6 3/4 inches, greatest dia. 3 3/4 inches; (7/8 inch fissure at lower body, handle finial has been broken away, loopings around the lower body have crazing and minor loss). Similar in form and construction to P plate 11, right The condition issues are overshadowed by the beautiful form, color and decorations. \$150-300



59. **Freeblown Globular Bottle**, New England, 1783-1830. Bulbous form, medium to deep olive amber, applied round collared mouth - pontil scar, ht. 12 inches, greatest dia. 8 1/4 inches; (1 inch "star" fissure at mid body). Similar in form and construction to MW color plate III, top left An unusual example with several indented areas on the body. Crude and beautiful. \$200-400



60. **Freeblown Covered Sugar Bowl**, possibly Pittsburgh district, Pittsburgh, Pennsylvania, 1840-1860. Bulbous form with applied solid circular foot, tooled cover with solid knob, pontil scar on knob, colorless with red and white loopings, tooled rim - pontil scar, ht. with cover 6 7/8 inches, greatest dia. 4 5/8 inches; (2 inch crack in rim of cover). Similar construction techniques are noted on PG plates 476 through 478 An attractive form with vibrant colored decorations. \$400-800



61. **Freeblown Witch Ball**, possibly Boston and Sandwich Glass Works, Sandwich, Massachusetts, 1840-1860. Spherical, sky blue with opaque milk glass loopings, rough mouth opening - smooth base, dia. 5 3/4 inches. Similar to GW color plate 4, bottom right A heavy witch ball with very thick glass. Fine condition. \$200-400



62. **Freeblown Bowl**, possibly New England, 1820-1840. Cylindrical flaring to rim, bright olive green, tooled outward folded rim - pontil scar, ht. 4 1/8 inches, greatest dia. 8 3/4 inches; (moderate interior usage wear and scratches). Similar in form and construction to McK plate 71A, #7 \$300-600



63. **Pitkin Type Flask**, ribbed and swirled to the right, 32 ribs, probably Mid Atlantic region, 1800-1830. Medium yellowish green, sheared mouth - pontil scar, ht. 6 5/8 inches; (light to moderate exterior high point wear). Similar in form and construction to MW plate 89, #4 Beautiful glass clarity, color and form. Fine condition. \$400-800

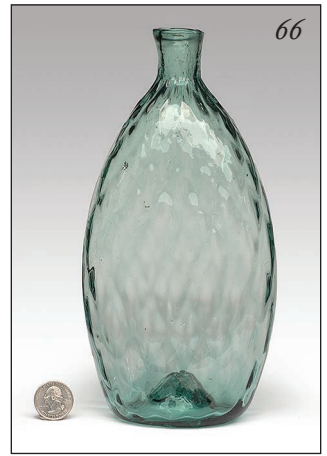


64. **Freeblown Celery Vase**, superimposed gadrooning on bowl from a 24 rib mold, possibly Pittsburgh district, Pittsburgh, Pennsylvania, 1820-1840. Trumpet form vase on applied knob stem and solid circular foot, colorless with a grayish tone, tooled flared rim - pontil scar, ht. 8 3/8 inches, greatest dia. 4 7/8 inches; (edge of base has been polished). PG plate 149, right A graceful and elegant form. Generally fine condition. \$400-800





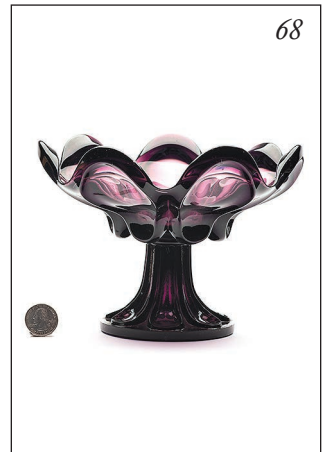
65. **Freeblown Marbrie Bottle**, possibly Boston and Sandwich Glass Works, Sandwich, Massachusetts, 1870-1887. Cylindrical, white milk glass encased in colorless glass with blue and red loopings, tooled flared mouth - pontil scar, ht. 5 5/8 inches, greatest dia. 3 inches. Similar construction techniques and colors are noted on B/K plate 5238 A wonderful form and color combination. Fine condition. \$250-500



66. **Pattern Molded Flask**, 16 diamond pattern, possibly Midwest America, 1815-1830. Flattened elongated teardrop form, greenish aquamarine, sheared mouth - pontil scar, ht. 9 3/8 inches, wdth. 4 5/8 inches; (potstone near the shoulder has several tiny radiations, light exterior high point wear). Similar in form and construction to McK plate 230, #8 A scarce larger form and rare rib count. Generally fine condition. \$100-200



67. **Lot Of Four Pressed Glass Shot Glasses**, probably New England, 1840-1860. Hexagonal base flaring to cylindrical rim, golden amber, medium blue green, light yellow green and light yellow, tooled rims - smooth bases, ht. (3) 2 1/4 inches and 2 5/8 inches. JK plate 138 Scarce and beautiful colors. Fine condition. \$150-300



68. **Pressed Glass Compote**, loop leaf design, Boston and Sandwich Glass Works, Sandwich, Massachusetts, 1850-1870. Cylindrical bowl form with seven leaf panels, applied circular loop leaf foot, medium amethyst, tooled flared gauffered rim - pontil scar, ht. 5 1/2 inches, greatest dia. 7 1/2 inches; (4 inch crack through base, 1/4 inch surface chip on base). B/K #1149 Beautiful form and color. Displays as if perfect. \$200-400



69. **Pattern Molded Back Bar Decanter**, probably Pittsburgh district, Pittsburgh, Pennsylvania, 1840-1860. Inverted cone form with 8 heavy vertical ribs and applied neck ring, medium to deep cobalt blue, heavy applied double collared mouth - pontil scar, ht. 10 1/4 inches. PG plate 183, right A beautiful example with bubbly glass and a wonderful exterior surface. Fine condition. \$750-1500



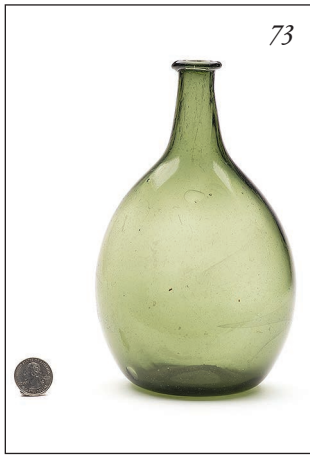
70. **Freeblown Chestnut Bottle**, New England, 1783-1830. Medium yellow olive, applied sloping collared mouth - pontil scar, ht. 7 5/8 inches; (light exterior high point wear). Similar in form to KW fig. 47 More globular than usual. Fine condition. \$250-500



71. **Pair Of Freeblown Witch Balls And Stands**, possibly a South Jersey glasshouse, 1840-1860. Trumpet form with hollow ball stem and circular foot, yellow amber stands, medium copper witch balls, tooled flared rims - pontil scars on stands, rough sheared openings on witch balls, ht. with witch balls 12 1/2 inches and 12 5/8 inches, greatest dia. of stand 4 1/8 inches, ball dia. 5 1/2 inches. Similar to P fig. 1 A rare pair. Fine condition. Ex Paul Richards collection. \$400-800



72. **Pressed Glass Tulip Vase**, Boston and Sandwich Glass Works, Sandwich, Massachusetts, 1845-1865. Octagonal tulip form attached with wafer to octagonal base, light to medium lavender amethyst, tooled flared scalloped rim - smooth base, ht. 9 7/8 inches, greatest dia. 5 1/2 inches. Similar in form and construction to B/K #3021 Type b Exquisite color and pristine condition. \$400-800



73

73. **Freeblown Chestnut Bottle**, New England, 1783-1830. Medium forest green, applied round collared mouth - pontil scar, ht. 8 inches; (light exterior high point wear). Similar in form and construction to McK plate 224, #8 A pleasing high shouldered form in a handsome New England color. Fine condition. \$200-400



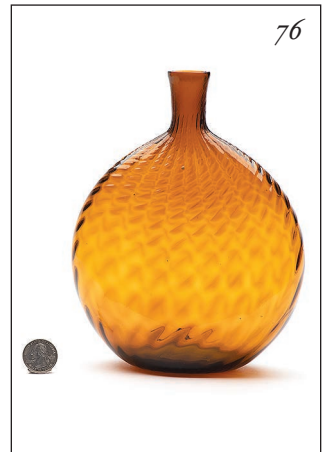
75

75. **Freeblown Cologne Bottle**, possibly Pittsburgh district, Pittsburgh, Pennsylvania, 1840-1860. Tapered cylindrical form, medium grape amethyst, tooled flared mouth with ground interior to accept polished glass stopper - pontil scar, ht. with stopper 9 1/2 inches, greatest dia. 3 3/8 inches. An early, simple and elegant form. Beautiful color. Fine condition. \$200-400



74

74. **Pressed Glass Vase**, elongated loop pattern, possibly Boston and Sandwich Glass Works, Sandwich, Massachusetts, 1840-1860. Hexagonal trumpet form vase, standard and base with ellipse and circle design, rich violet with cobalt blue tones, tooled gauffered rim - smooth base, ht. 7 1/4 inches, greatest dia. 3 3/8 inches; (3/8 inch flake on edge of base). American Glass 1760-1930 The Toledo Museum Of Art Vol. 1, #729 An attractive vase in a most unusual color. Generally fine condition. \$300-600



76

76. **Large Pattern Molded Flask**, ribbed and swirled to the right, 24 ribs, a Zanesville glasshouse, Zanesville, Ohio, 1820-1840. Flattened coin form, brilliant orange amber, sheared mouth - pontil scar, ht. 8 1/8 inches, wdth. 6 1/4 inches; (3 inch horizontal crack across a potstone near the base). Similar in form and construction to McK plate 234, #4 This "Grandfather flask" is a beautiful example in color, form and brilliance. \$300-600



77

77. **Freeblown Covered Sugar Bowl**, Pittsburgh district, Pittsburgh, Pennsylvania, 1820-1840. Bulbous form with applied solid knob stem and circular base, high domed cover with applied solid circular hourglass knob, colorless, tooled galleried rim - pontil scar, ht. with cover 9 1/4 inches, greatest dia. 4 5/8 inches. Similar in form and construction to PG plate 36, left Attractive high domed cover. Fine condition. \$400-800



78

78. **Freeblown Utility Jar**, probably New England, 1830-1850. Cylindrical, medium blue green, wide tooled flared mouth - pontil scar, ht. 5 5/8 inches, greatest dia. 5 inches; (light scattered exterior wear marks). Similar in form and construction to MW color plate VII, #3 A well proportioned jar in a rare and beautiful color. Fine condition. \$300-600



79

79. **Lot Of Four Pressed Glass Shot Glasses**, probably New England or Pittsburgh, 1840-1860. Cylindrical flaring to rim, canary yellow, rich violet, bluish aquamarine and celery green, tooled rims - one is pontiled, ht. 2 inches, 2 1/8 inches, 2 1/4 inches and 2 3/8 inches; (violet example has a 1/16 inch flake on the rim and a 1/4 inch flake on the edge of the base, canary example has two 1/4 inch chips on the edge of the base). JK plate 139 and PG plate 325 Bright and eye catching examples. Generally fine condition. \$150-300



80

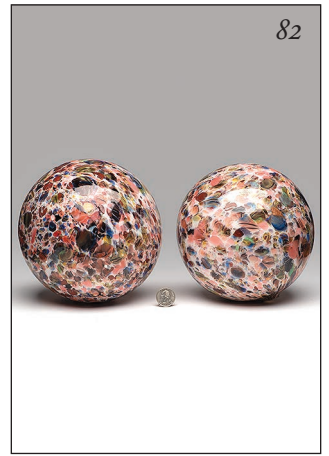
80. **Freeblown Witch Ball**, possibly Boston and Sandwich Glass Works, Sandwich, Massachusetts, 1840-1860. Spherical, medium amethyst, rough mouth opening - smooth base, dia. 3 3/8 inches. Similar to B/K #3231 Fine condition. \$100-200



81

81. **Freeblown Creamer**, possibly early Pittsburgh district, Pittsburgh, Pennsylvania, 1820-1840. Flower pot form flaring to rim, applied solid handle with rigaree, colorless, tooled flared rim with pour spout - pontil scar, ht. 4 1/4 inches, greatest dia. 3 inches; (light scattered exterior wear marks).

Similar in form and construction to PG plate 37, top right A simple piece of early American tableware with interesting tooling marks on the rim. Fine condition. \$125-250



82

82. **Pair Of Freeblown Witch Balls**, possibly Boston and Sandwich Glass Works, Sandwich, Massachusetts, 1840-1860. Spherical, white milk glass with multicolor splottches cased on the interior and exterior with colorless glass, rough mouth openings - smooth bases, dia. 6 3/4 inches.

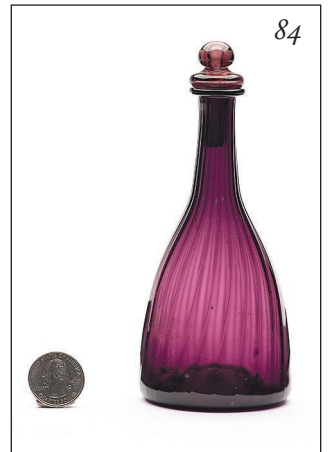
Similar to B/K #3225 and 3226 A spectacular pair of witch balls in size and color. Fine condition. \$300-600



83

83. **Freeblown Milk Pan**, Midwest America, 1820-1840. Cylindrical flaring to rim, brilliant orange amber, tooled outward folded rim - pontil scar, ht. 2 5/8 inches, greatest dia. 8 1/8 inches; (light scattered interior and exterior wear marks).

Similar in form and construction to PG color plate 2, right Beautiful bright color and somewhat uneven form. Fine condition. \$300-600



84

84. **Pattern Molded Cologne Bottle**, 24 ribs slightly swirled to the right, probably early Pittsburgh district, Pittsburgh, Pennsylvania, 1820-1840. Tapering cylindrical form, medium amethyst with light amethyst stopper, flared and inward folded mouth with hollow "Tam-O-Shanter" stopper - pontil scar, ht. with stopper 6 inches, greatest dia. 2 1/2 inches. Similar in form to PG plate 159, center and MW color plate V, #8 A sweet little cologne blown with a high quality metal. Early and beautiful. Fine condition. \$400-800



85

85. **Pressed Glass Candlestick**, petal and loop design, Boston and Sandwich Glass Works, Sandwich, Massachusetts, 1840-1860. Brilliant peacock blue, pontil scar, ht. 7 inches, base dia. 4 3/4 inches; (four chips on edge of socket, the largest being 5/8 inch, 7/8 inch internal fissure in socket).

B/K #4032 \$100-200



86

86. **Pitkin Type Flask**, ribbed and swirled to the right, 36 ribs, Midwest America, 1800-1830. Brilliant medium yellow green, sheared mouth - pontil scar, ht. 6 1/8 inches; (shallow 3/16 inch flake and manufacturing roughness on top edge of mouth).

Similar in form and construction to MW plate 88, #1 Usually seen in shades of amber, this example exhibits a rare and exceptional color. Generally fine condition. \$300-600



87

87. **Freeblown Chestnut Bottle**, New England, 1783-1830. Medium yellow olive, applied round collared mouth - pontil scar, ht. 8 1/2 inches; (faint 3/8 inch fissure near lower body, light exterior high point wear). Similar in form and construction to KW plate 47, #4 A good looking bottle in form and color. Generally fine condition. \$100-200



88

88. **Freeblown Carafe**, possibly Midwest America or South Jersey, 1850-1870. Bulbous form on applied solid circular foot, colorless with white milk glass loopings, tooled flared mouth - pontil scar, ht. 9 5/8 inches, greatest dia. 4 3/4 inches.

Similar in form to PG plate 478 This type of item could have been blown in South Jersey or Wheeling, W. Virginia. Fine condition. \$150-300



89

89. **Pair Of Pressed Glass Vases**, four printie block pattern, Boston and Sandwich Glass Works, Sandwich, Massachusetts, 1840-1860. Trumpet form vases attached with wafer on hexagonal bases, brilliant canary yellow, tooled flared gauffered rims - pontil scars, ht. 11 5/8 inches, greatest dia. 5 1/4 inches; (one example has several chips on edge of base, the largest being 3/16 inch).

B/K #3037a A magnificent pair having superb eye appeal. Generally fine condition. \$400-800



90

90. **Freeblown Decoration Ball**, possibly Boston and Sandwich Glass Works, Sandwich, Massachusetts, 1850-1870. Spherical with tapered extension, amethyst, rough mouth opening - smooth base, dia. 4 1/8 inches, lgth. 6 3/4 inches; (1/4 inch manufacturing chip on mouth opening). Similar to B/K #3236 These were also used as a handled jar cover. Fine condition. \$100-200



91

91. **Pattern Molded Back Bar Decanter**, possibly Pittsburgh district, Pittsburgh, Pennsylvania, 1840-1860. Inverted cone form with 8 heavy vertical ribs and applied neck ring, colorless with cobalt blue highlights on ribs, heavy applied double collared mouth - polished pontil scar, ht. 11 1/2 inches; (one vertical rib has a 3/8 inch chip and pinpoint flake, 1/4 inch flake on top edge of mouth).

Similar construction techniques are noted on PG plates 179 and 180 A graceful form and beautiful combination of colors. Generally fine condition. \$300-600



92

92. **Freeblown Chestnut Bottle**, possibly Wistarburgh Glass Works, Salem County, New Jersey, 1739-1780. Medium emerald green, heavy outward folded mouth - pontil scar, ht. 8 1/2 inches; (moderate to heavy exterior wear and scratches).

Similar in form and construction to McK plate 224, #12 The color, glass qualities and form are all indicative of early New Jersey manufacture. Generally fine condition. \$200-400



93

93. **Pressed Glass Tumbler**, possibly New England Glass Company, Cambridge, Massachusetts, 1840-1860. Hexagonal base flaring to cylindrical rim, light to medium teal, tooled rim - polished pontil scar, ht. 3 3/4 inches, greatest dia. 3 5/8 inches; (rim has been finely ground, pinpoint flake on edge of fluted panel and rim).

JK plate 138 A nearly wear free example in a beautiful color. Generally fine condition. \$50-100



94

94. **Pair Of Freeblown Vases**, possibly Midwest America, 1840-1860. Bulbous forms flaring to rim on applied solid knob stem and circular foot, brilliant sapphire blue with white milk glass loopings and rim, tooled flared gauffered rims - pontil scars, ht. 8 3/8 inches and 8 7/8 inches, greatest dia. 4 1/4 inches and 4 1/2 inches.

Similar in form and construction to PG plate 489, center Fine condition. \$500-1000



95

95. **Freeblown Chestnut Bottle**, New England, 1783-1830. Brilliant yellow amber, applied round collared mouth - pontil scar, ht. 5 1/4 inches; (light exterior high point wear).

Similar in form and construction to MW color plate III, center A scarce and beautiful color for this form. Fine condition. \$250-500



96

96. **Large Freeblown Serving Bowl**, probably Midwest America, 1820-1840. Cylindrical flaring to rim, aquamarine, tooled outward folded rim - pontil scar, ht. 7 1/4 inches, greatest dia. 10 7/8 inches; (interior surface bubble near base has a slight disturbance of the cover glass, light interior and exterior wear).

Similar in form and construction to McK plate 46, #4 Here's a piece that really commands your attention. One of the larger examples that we have seen. Fine condition. \$300-600



97

97. **Freeblown Utility Jar**, New England, 1800-1840. Cylindrical, medium golden amber, tooled flared mouth - pontil scar, ht. 6 1/8 inches, greatest dia. 4 5/8 inches; (3/16 inch open bubble on top edge of mouth, 1/8 inch cooling fissure across a sand grain at mid body, light exterior high point wear).

Similar in form and construction to McK plate 72a, #4 A wonderful piece of early New England utilitarian glassware. Pleasing smaller size and form. Generally fine condition. \$500-1000



98

98. **Freeblown Covered Sugar Bowl**, probably early Pittsburgh district, Pittsburgh, Pennsylvania, 1820-1840. Bulbous form with an applied solid stem and applied solid circular foot, domed cover with tooled rim and applied finial, cobalt blue, tooled rim - pontil scar, ht. with cover 6 3/4 inches, greatest dia. 4 3/8 inches; (moderate interior usage wear and stain). Wonderful form. Fine condition. \$400-800



99

99. **Freeblown Witch Ball**, possibly Boston and Sandwich Glass Works, Sandwich, Massachusetts, 1840-1860. Spherical, white milk glass with pink loopings, rough mouth opening - smooth base, dia. 7 1/4 inches. Similar to B/K #3229 Retains metal chain for suspension in a window. This is one of the largest witch balls in the collection. Fine condition. \$300-600



100

100. **Pattern Molded Serving Bottle**, 16 ribs swirled to the left, Midwest America, 1820-1840. Cylindrical beehive form, light blue green, applied round collared mouth - pontil scar, ht. 7 1/2 inches, greatest dia. 4 1/4 inches.

Similar in form and construction to McK plate 236, #10 An attractive example with graceful sloping shoulders, wonderful glass clarity and a scarce rib count. Fine condition. \$200-400



101

101. **Pressed Glass Vase**, elongated loop pattern, possibly Boston and Sandwich Glass Works, Sandwich, Massachusetts, 1840-1860. Hexagonal trumpet form vase, standard and base, medium emerald green, tooled gauffered rim - smooth base, ht. 7 1/2 inches, greatest dia. 4 inches.

American Glass 1760-1930 The Toledo Museum Of Art Vol. 1, #729 Fine condition. \$400-800



102

102. **Freeblown Chestnut Bottle**, New England, 1783-1830. Blazing yellow with a hint of olive, applied round collared mouth - pontil scar, ht. 8 inches; (light scattered exterior wear marks).

Similar in form and construction to MW color plate III, center A beautiful, brilliant color with attractive surface swirls and crudely applied mouth. Fine condition. \$200-400



103

103. **Pattern Molded Pitcher**, 16 vertical ribs, possibly Pittsburgh district, Pittsburgh, Pennsylvania, 1820-1840. Flower pot form with straight neck, applied solid handle with rigaree, colorless with applied cobalt band on rim, tooled rim with pour spout - pontil scar, ht. 5 3/4 inches, greatest dia. 5 inches.

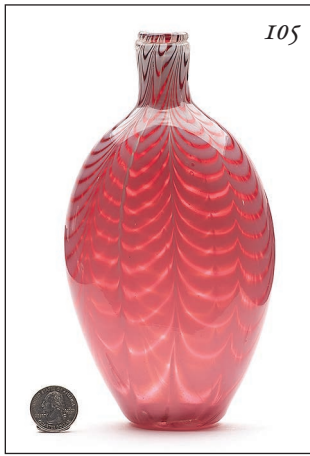
Similar colors and construction techniques are noted on PG plate 197 Wonderful glass clarity and workmanship. Fine condition. \$200-400



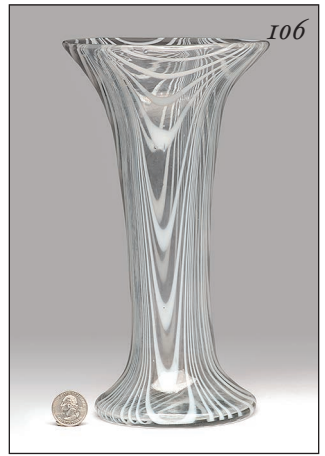
104

104. **Pressed Glass Tumbler**, possibly New England Glass Company, Cambridge, Massachusetts, 1840-1860. Hexagonal base flaring to cylindrical rim, medium plum amethyst, tooled rim - smooth base, ht. 4 inches, greatest dia. 3 1/2 inches; (usage roughness on the corners of the base).

JK plate 138 A pretty color showing some subtle striations. Generally fine condition. \$100-200



105. **Freeblown Nailsea Type Flask**, probably England, 1820-1840. Flattened ovoid form, cranberry color encased in colorless glass with white milk glass loopings, tooled mouth - pontil scar, ht. 7 3/4 inches; (light exterior high point wear). Similar in form and construction to GW color plate 14 bottom left and right A sturdy flask with beautiful decorations and color. Fine condition. \$150-300



106. **Freeblown Vase**, possibly a South Jersey glasshouse, 1840-1860. Trumpet form with flaring base, colorless with opaque milk glass loopings, tooled flared rim - pontil scar, ht. 10 inches, greatest dia. 5 1/2 inches; (light interior usage wear and haze). P fig. 115 Fine condition. \$200-400



107. **Freeblown Chestnut Bottle**, New England, 1783-1830. Medium yellow olive, applied round collared mouth - pontil scar, ht. 10 5/8 inches; (scattered exterior wear marks and abrasions, several small pieces of glass are adhered to side near base). Similar in form and construction to McK plate 224, #8 A real "brute" of a chestnut bottle having thicker glass, profuse surface swirls and a large size. Fine condition. \$300-600



108. **Pressed Glass Vase**, elongated loop pattern, possibly Boston and Sandwich Glass Works, Sandwich, Massachusetts, 1840-1860. Hexagonal trumpet form vase, standard and base with ellipse and circle design, rich yellowish emerald green, tooled gauffered rim - smooth base, ht. 7 1/8 inches, greatest dia. 3 7/8 inches. American Glass 1760-1930 The Toledo Museum Of Art Vol. 1, #729 Beautiful form, beautiful color. Fine condition. \$400-800



109. **Freeblown Witch Ball**, possibly Boston and Sandwich Glass Works, Sandwich, Massachusetts, 1840-1860. Spherical, white milk glass with blue and red decorations, rough mouth opening - smooth base, dia. 5 inches. Similar to B/K #3234 and 3235 Beautiful bright decorations. Fine condition. \$200-400



110. **Paneled Cologne Bottle**, Boston and Sandwich Glass Works, Sandwich, Massachusetts, 1850-1870. Twelve sided form, bright medium sapphire blue, tooled flared mouth - smooth base, ht. 6 3/8 inches. Similar to B/K #5197 A super example with surface swirls and a beautiful color. Fine condition. \$100-200



111. **Pattern Molded Pocket Flask**, 18 vertical ribs, Midwest America, 1820-1840. Flattened chestnut form, rich aquamarine, sheared mouth - pontil scar, ht. 5 inches. Similar in form and construction to MW color plate VI, #1 A plump little beauty with a scarce rib count and wonderful exterior surface. Fine condition. \$300-600



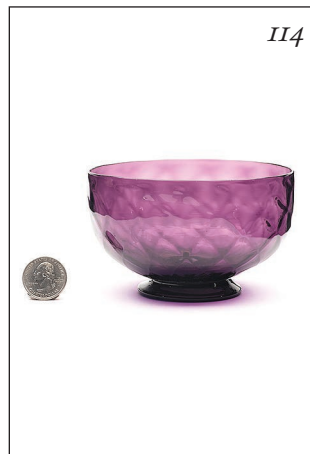
112. **Freeblown Covered Sugar Bowl**, probably Pittsburgh district, Pittsburgh, Pennsylvania, 1820-1840. Cylindrical straight sided form with applied solid hourglass stem and circular foot, domed cover with applied spherical knob, colorless, tooled galleried rim - pontil scar, ht. with cover 7 1/2 inches, greatest dia. 5 1/4 inches; (light interior and exterior wear marks). Similar in form and construction to PG plate 36 Fine condition. \$400-800



113

113. **Freeblown Chestnut Bottle**, New England, 1783-1830. Light olive green, applied round collared mouth - pontil scar, ht. 6 3/8 inches; (light exterior high point wear, 3/8 inch fissure and surface bruise at mid body). Similar in form and construction to MW color plate III, center Early, simple and beautiful. Generally fine condition. \$100-200

114. **Pattern Molded Bowl**, expanded 15 diamond pattern, possibly Stiegel's American Flint Glass Manufactory, Marhaim, Pennsylvania, 1763-1774. Cylindrical form with applied solid foot, bright medium amethyst, tooled rim - pontil scar, ht. 2 11/16 inches, greatest dia. 4 3/8 inches. Similar in form and construction to McK plate 31, #4 A high quality metal with beautiful shading. Fine condition. \$500-1000



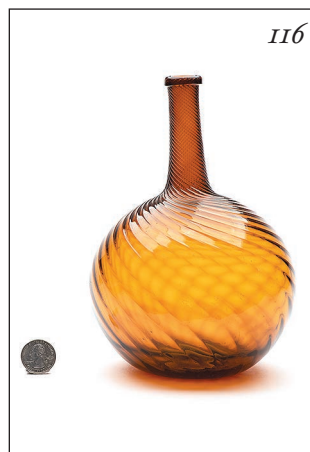
114



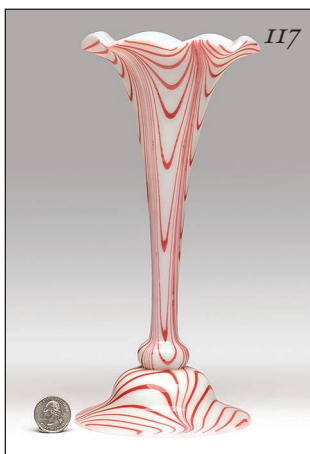
115

115. **Lot Of Four Freeblown Marbles**, Germany, 1840-1860. Spherical, colorless with multicolor swirls and cores, polished pontil scars, dia. 1 1/8 inches, 1 3/8 inches, 1 13/16 inches and 2 inches; (three have overall usage wear). Beautiful colors and internal decorations. \$200-400

116. **Pattern Molded Globular Bottle**, 24 ribs swirled to the left, a Zanesville glasshouse, Zanesville, Ohio, 1820-1840. Bulbous form, bright yellowish amber, outward folded mouth - pontil scar, ht. 8 inches, greatest dia. 5 1/4 inches. Similar in form and construction to MW color plate V, #1 A beautiful bottle in a lighter color than most with tight, well defined swirls from the top to the bottom. Fine condition. \$400-800



116



117

117. **Freeblown Vase**, possibly a South Jersey glasshouse, 1860-1880. Trumpet form with gauffered rim and applied domed base, white milk glass with red loopings, tooled flared rim - pontil scar, ht. 10 inches, greatest dia. 4 5/8 inches. Elegant and attractive. Fine condition. \$200-400

118. **Early Wine Bottle**, probably Belgium, 1740-1760. Cylindrical, medium olive green with multi color exterior surface patina, sheared mouth with applied string rim - pontil scar, ht. 9 1/2 inches, greatest dia. 4 3/4 inches; (exterior surface "patina" is fragile and flaking, numerous cracks in neck, top of mouth is rough and chipped, heavy exterior wear marks). Similar in form and construction to AG plate 125 Beautiful surface colors and early form. \$150-300



118



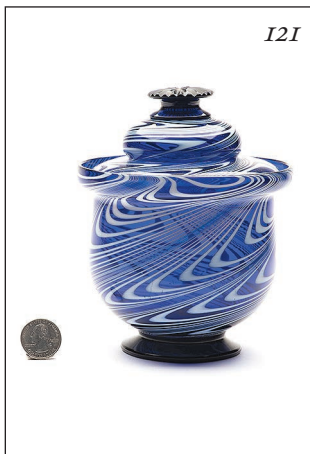
119

119. **Freeblown Witch Ball**, possibly Boston and Sandwich Glass Works, Sandwich, Massachusetts, 1840-1860. Spherical, medium to deep cobalt blue, rough mouth opening - smooth base, dia. 3 inches. Similar to B/K #3231 Fine condition. \$100-200

120. **Freeblown Utility Bottle**, probably Germany, 1820-1840. Cylindrical, medium olive green, tooled flared mouth - pontil scar, ht. 8 3/4 inches, greatest dia. 5 1/2 inches; (light exterior high point wear). AAG plate 293, center A crude bottle much like the early utilitarian wares from New England. Fine condition. \$150-300



120



121. **Freeblown Covered Sugar Bowl**, probably Midwest America, 1840-1860. Bulbous form with applied solid circular foot, freeblown cover with applied circular cut glass knob, cobalt blue with milk glass loopings, tooled galleried rim - polished pontil scar, ht. with cover 6 1/8 inches, greatest dia. 5 inches; (light exterior high point wear). Similar in form and construction to PG plate 46, bottom row 2nd from left Fine condition. \$1000-2000



122. **Freeblown Chestnut Bottle**, New England, 1783-1830. Light to medium olive yellow, applied round collared mouth - pontil scar, ht. 6 3/4 inches. Similar in form and construction to KW fig.47, #4 A real gem of a chestnut. Simple and beautiful. Fine condition. \$200-400



123. **Cut Glass Celery Vase**, vesica pattern, Pittsburgh district, Pittsburgh, Pennsylvania, 1820-1840. Trumpet form vase on applied knop stem and solid circular foot, colorless, tooled flared rim - polished pontil scar, ht. 8 3/8 inches, greatest dia. 5 inches. Similar in form and construction to PG plate 92, right An early form with intricate cut decorations. Fine condition. \$200-400



124. **Pressed Glass Handled Tumbler**, possibly New England Glass Company, Cambridge, Massachusetts, 1840-1860. Cylindrical with nine arched panels around base, applied solid ear form handle, light to medium amethyst, tooled rim - polished pontil scar, ht. 2 3/4 inches, greatest dia. 2 1/2 inches; (handle finial has been broken away, 1/4 inch surface bruise at lower handle attachment). Similar in form and construction to JK plate 139 Rare with an applied handle. Generally fine condition. \$100-200



125. **Pitkin Type Flask**, ribbed and swirled to the left, 36 ribs, Midwest America, 1820-1830. Flattened coin form, medium yellowish amber, sheared mouth - pontil scar, ht. 5 7/8 inches. Similar in form and construction to MW color plate IV, #2 This plump little beauty retains an early collectors label near the base. Beautiful form and lighter color. Fine condition. \$400-800



126. **Paneled Cologne Bottle**, Boston and Sandwich Glass Works, Sandwich, Massachusetts, 1850-1870. Tall twelve sided form, medium to deep peacock or teal blue, tooled flared mouth - smooth base, ht. 7 1/2 inches. Similar to B/K #5198 The combination of the rare color and wide shouldered form make this one special. Fine condition. \$200-400



127. **Freeblown Witch Ball And Stand**, possibly Midwest America, 1840-1860. Bulbous form flaring to rim with tooled three knop stem and flared foot, stand is colorless with red and white loopings, witch ball is white milk glass with pink loopings, tooled flared rim - smooth inward folded base, witch ball has rough sheared opening, ht. with witch ball 11 1/2 inches, greatest dia. of stand 4 1/4 inches, witch ball dia. 4 1/2 inches. A beautiful example with well formed decoration of the stand. Fine condition. \$400-800



128. **Freeblown Serving Bowl**, New England, 1815-1830. Cylindrical flaring to rim, light to medium olive green, tooled outward folded rim - pontil scar, ht. 5 inches, greatest dia. 10 1/8 inches; (light interior and exterior wear). Similar in form and construction to McK plate 13, #8 Possibly a Connecticut piece as the color and glass qualities are indicative of that area. Fine condition. \$400-800



*Exceptional Examples of
Early American Glass*





129. **Freeblown Pitcher**, probably England, 1820-1840. Flower pot form flaring to rim with applied solid handle, light to medium olive green with white milk glass bands around rim, tooled flared rim with pour spout - pontil scar, ht. 8 inches, greatest dia. 5 3/4 inches; (light scattered exterior usage wear).

A simple and pleasing early form. Fine condition. \$300-600



130. **Paneled Cologne Bottle**, Boston and Sandwich Glass Works, Sandwich, Massachusetts, 1850-1870. Twelve sided form, medium amethyst with deeper striations in the base area, flared inward folded mouth - smooth base, ht. 6 inches.

B/K #5198 Wonderful in all aspects: form, color and fine condition. \$100-200



131. **Freeblown Chestnut Bottle**, New England, 1783-1830. Bright olive amber, applied sloping collared mouth - pontil scar, ht. 9 3/8 inches; (open interior surface bubble near the base, just a couple light scattered exterior wear marks).

Similar in form and construction to KW plate 47, #2 Beautiful color, condition and form. \$200-400



132. **Freeblown Covered Apothecary Storage Jar**, possibly Pittsburgh district, Pittsburgh, Pennsylvania, 1840-1860. Cylindrical with two applied bands on body, domed cover with applied band, hollow knob and finial prunt, colorless with cobalt blue bands and finial prunt, tooled rim - pontil scar, ht. with cover 10 5/8 inches, greatest dia. 4 7/8 inches; (3/16 inch chip on edge of finial prunt).

Generally fine condition. \$150-300



133. **Lot Of Four Pressed Glass Drinking Vessels**, one tumbler, two shot glasses and a toy handled lemonade, probably New England or Pittsburgh, 1840-1860. One has fifteen vertical ribs, two have octagonal bases flaring to cylindrical rims and one has a hexagonal base flaring to a cylindrical rim, aquamarine, cobalt blue and brilliant yellow green, tooled rims - two are pontiled, ht. 1 3/4 inches, 2 1/4 inches, 2 7/8 inches and 3 1/2 inches; (bright green example has 1 inch crack in base and chips on points of base, aquamarine example has roughness on several points of base).

JK plate 138 and 139, B/K plate 3326 and PG plate 325 A varied lot in generally fine condition. \$100-200

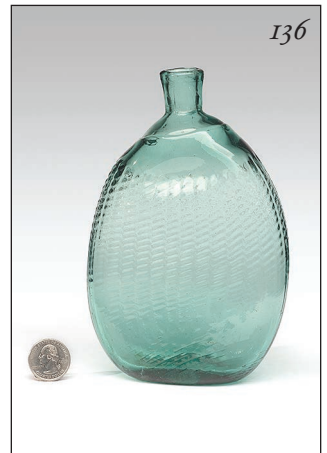


134. **Pattern Molded Vase**, 9 vertical panels, possibly Pittsburgh district, Pittsburgh, Pennsylvania, 1820-1840. Bulbous flaring to rim on applied knob stem and solid circular foot, medium cobalt blue, tooled flared gauffered rim - pontil scar, ht. 8 1/2 inches, greatest dia. 4 1/8 inches; (light patchy interior stain, shallow 1/8 inch flake on rim).

Similar in form to PG plate 46, top center \$300-600



135. **Freeblown Witch Ball**, possibly Boston and Sandwich Glass Works, Sandwich, Massachusetts, 1840-1860. Spherical, white milk glass with blue and red loopings, rough mouth opening - smooth base, dia. 4 inches. Similar to B/K #3234 and 3235 Fine condition. \$300-600



136. **Pitkin Type Flask**, ribbed and swirled to the right, 32 ribs, Midwest America, 1820-1840. Medium sea green, sheared mouth - pontil scar, ht. 7 inches.

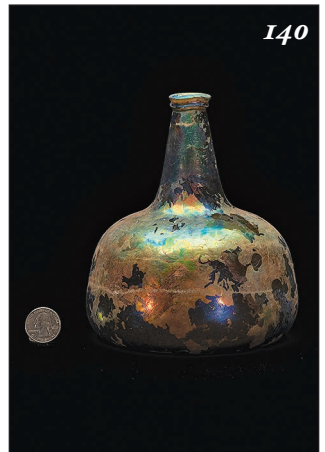
Similar in form and construction to MW plate 89, #4 This example is highlighted by a beautiful color and clean exterior surface. Fine condition. \$400-800



137. **Pair Of Freeblown Witch Balls And Stands**, possibly Pittsburgh district, Pittsburgh, Pennsylvania, 1840-1860. Bulbous form flaring to rim on applied solid knob stem and circular foot, colorless with opaque milk glass loopings, tooled flared rims - pontil scars on stands, rough sheared openings on witch balls, ht. with witch balls 13 inches, greatest dia. of stand 5 inches and 5 3/8 inches, witch ball dia. 5 1/2 inches. Similar in form to PG plate 428, left and PG 488 A classic pair of Pittsburgh area decorative items. Fine condition. \$500-1000



138. **Smelling Salts Bottle**, Boston and Sandwich Glass Works, Sandwich, Massachusetts, 1850-1870. Hexagonal with concave sides, emerald green, ground mouth with screw threads and threaded pewter cap - smooth base, ht. 2 3/8 inches; (two shallow manufacturing flakes on top edge of mouth, light exterior high point wear). B/K #5189 A pretty example with some swirls in the glass. Bottle still retains a pleasant perfume aroma. Fine condition. \$50-100



139. **Blown Three Mold Toilet Water Bottle**, Boston and Sandwich Glass Works, Sandwich, Massachusetts, 1840-1860. Cylindrical with vertical ribs, light to medium violet with cobalt blue stopper, tooled flared mouth with "Tam-O-Shanter" stopper - pontil scar, ht. with stopper 6 1/2 inches. GI-7, Type 2 A scarce and beautiful color. Fine condition. \$100-200

140. **Early Wine Bottle**, England, 1720-1730. Cylindrical, medium olive green with multi color exterior surface patina, sheared mouth with applied string rim - pontil scar, ht. 6 5/8 inches, greatest dia. 5 3/8 inches; (1/2 inch hole at pontil scar, exterior surface "patina" is fragile and flaking). Similar in form and construction to AG plate 18, left An early transitional form with a colorful exterior surface. Generally fine condition. \$200-400



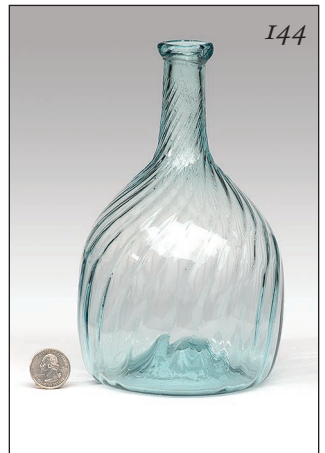
141. **Freeblown Chestnut Bottle**, New England, 1783-1830. Light to medium olive green, applied round collared mouth - pontil scar, ht. 6 3/4 inches; (hard to see 1/4 inch fissure on an interior "blob" of glass). Similar in form and construction to McK plate 224, #8 Beautiful size, form and color. Generally fine condition. \$100-200



142. **Freeblown Bowl**, probably Midwest America, 1820-1830. Cylindrical flaring to rim with somewhat concave sides, brilliant golden yellow, tooled outward folded rim - pontil scar, ht. 4 7/8 inches, greatest dia. 6 1/4 inches; (light scattered interior and exterior wear marks). Similar in construction to McK plate, 82, #3 An area of excess glass is adhered to the side near the base. Wonderful form, wonderful color, wonderful jar. Fine condition. \$250-500



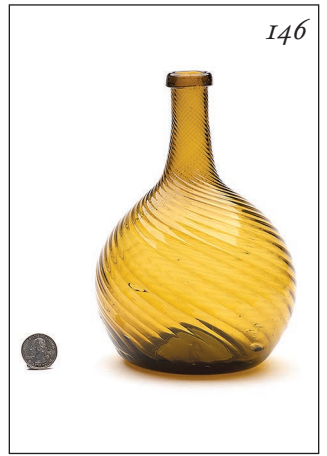
143. **Freeblown Vase**, one piece hollow construction, possibly Midwest America, 1840-1860. Bulbous form flaring to rim with knob stem and domed circular base, cobalt blue with white milk glass rim, tooled flared gauffered rim - pontil scar, ht. 8 1/2 inches, greatest dia. 3 3/4 inches; (washable interior content residue). Similar in form to PG plate 44 A beautiful bright color and pleasing form. Fine condition. \$200-400



144. **Pattern Molded Serving Bottle**, 24 ribs swirled to the right, Midwest America, 1820-1840. Cylindrical beehive form, brilliant aquamarine, applied round collared mouth - pontil scar, ht. 8 1/8 inches, greatest dia. 4 3/4 inches. Similar in form and construction to MW plate 94, #5 A crisp, clean, exceptional example. Fine condition. \$200-400



145. **Freeblown Vase**, possibly Pittsburgh district, Pittsburgh, Pennsylvania, 1860-1880. Trumpet form vase on applied solid stem and circular foot, colorless with red, white and blue loopings, tooled flared rim - pontil scar, ht. 9 inches, greatest dia. 4 5/8 inches; (three surface bubbles have loss of cover glass). Similar in form and construction to PG plate 477, left Generally fine condition. \$350-700



146. **Pattern Molded Globular Bottle**, 24 ribs swirled to the left, a Zanesville glasshouse, Zanesville, Ohio, 1820-1840. Bulbous form, brilliant yellowish golden amber, outward folded mouth - pontil scar, ht. 7 5/8 inches, greatest dia. 5 1/8 inches; (several open surface bubbles, the largest being 1/2 inch, surface bubble at mid body has a 3/8 inch associated fissure). Similar in form and construction to MW color plate V, #1 A wonderful form and unusually bright color. Generally fine condition. \$300-600



147. **Freeblown Pitcher**, probably England, 1820-1840. Corseted cylindrical form flaring to shoulder with applied solid handle, bright yellowish olive green with white milk glass loopings, tooled flared rim with pour spout - pontil scar, ht. 7 5/8 inches, greatest dia. 4 1/2 inches. An early form with a wonderful color combination. Fine condition. \$300-600



148. **Pressed Glass Decanter**, probably Pittsburgh district, Pittsburgh, Pennsylvania, 1860-1880. Cylindrical with octagonal base, bright cobalt blue, sheared mouth with applied neck band, pewter, cloth and cork cap - polished pontil scar, ht. with cap 11 7/8 inches; (surface potstone on shoulder shows three 1/8 inch radiations, light exterior high point wear, numerous chips around edge of base). Similar in form to American Glass 1760-1930 The Toledo Museum Of Art Vol. 2, fig. 889 Beautiful bright color. \$200-400



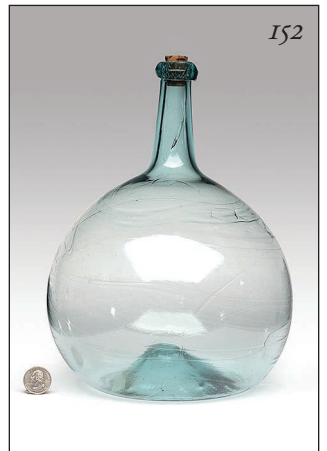
149. **Two Pressed Glass Tumblers**, possibly New England Glass Company, Cambridge, Massachusetts, 1840-1860. Octagonal bases flaring to cylindrical rims, rich cobalt blue and medium amethyst, tooled rims - smooth bases, ht. 3 1/4 inches, greatest dia. 3 1/4 inches; (both have chips on corners of bases, the largest being 3/16 inch). JK plate 139 Beautiful colors and shading. Generally fine condition. \$150-300



150. **Snuff Bottle**, dip mold construction, America, 1840-1860. Square with beveled corners, medium forest green, tooled flared mouth - pontil scar, ht. 5 3/8 inches; (moderate exterior high point wear). Similar in form and construction to McK plate 227, #10 Fine condition. \$200-400



151. **Freeblown Witch Ball**, probably Boston and Sandwich Glass Works, Sandwich, Massachusetts, 1840-1860. Spherical, white milk glass with maroon and red loopings, rough mouth opening - smooth base, dia. 3 3/4 inches. Similar to B/K #3229 Unusual colors. Fine condition. \$300-600



152. **Freeblown Globular Bottle**, Midwest America, 1815-1830. Bulbous form, bluish aquamarine, applied round collared mouth - pontil scar, ht. 11 1/4 inches, greatest dia. 8 inches; (light exterior high point wear). Similar in form and construction to MW color plate III, bottom left A clean, bright example with profuse undulating surface swirls. Fine condition. \$300-600



153

153. **Blown Three Mold Decanter**, probably England, 1815-1830. Barrel form, rich blue green with emerald tones, tooled flared mouth - pontil scar, ht. 6 1/2 inches, greatest dia. 3 1/4 inches; (stopper is missing, light interior haze).

Pattern is unlisted in McKearin's charts Fine condition. \$750-1500



154

154. **Freeblown Chestnut Bottle**, New England, 1783-1830. Medium olive amber, applied sloping collared mouth - pontil scar, ht. 7 7/8 inches; (light exterior high point wear).

Similar in form and construction to McK plate 225, #8 A squatty, plump example with attractive shading. Fine condition. \$200-400



155

155. **Freeblown Bottle**, possibly Midwest America, 1840-1860. Cylindrical with applied bands on upper shoulder and neck, colorless with opaque milk glass loopings, colorless applied bands, tooled flared mouth - pontil scar, ht. 10 7/8 inches, greatest dia. 3 inches.

Similar construction techniques are noted on PG plates 48 and 49 Possibly used as a back bar decanter. Fine condition. \$125-250



156

156. **Freeblown Hyacinth Glass**, Boston and Sandwich Glass Works, Sandwich, Massachusetts, 1830-1850. Bulbous form on applied inverted conical base with inward folded rim, rich cobalt blue, tooled flared rim - pontil scar, ht. 8 1/8 inches, greatest dia. 3 1/2 inches.

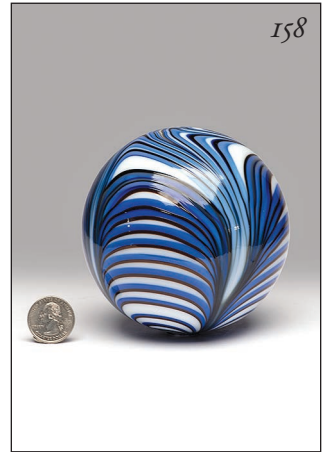
B/K #3041a Fine condition. \$200-400



157

157. **Freeblown Cologne Bottle**, America, 1840-1860. Tall tapered cylindrical form, medium amethyst, outward folded mouth - pontil scar, ht. 9 1/2 inches.

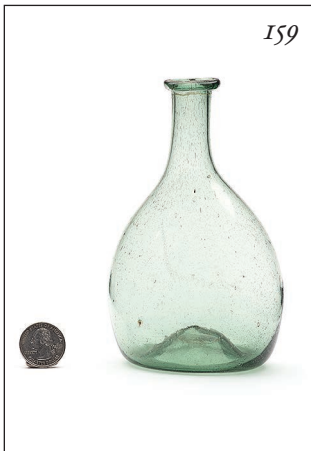
Similar in form and construction to MW plate 114, #8 A simple and elegant form. Fine condition. \$200-400



158

158. **Freeblown Witch Ball**, possibly Boston and Sandwich Glass Works, Sandwich, Massachusetts, 1840-1860. Spherical, white milk glass with blue and maroon loopings, rough mouth opening - smooth base, dia. 4 inches.

Similar to B/K #3234 and 3235 Unusual and beautiful. Fine condition. \$250-500



159

159. **Freeblown Chestnut Bottle**, New England, 1783-1830. Clear light green, applied round collared mouth - pontil scar, ht. 5 7/8 inches.

Similar in form and construction to McK plate 224, #11 A little gem in a beautiful and delicate color. Fine condition. \$150-300



160

160. **Freeblown Sugar Bowl Or Jam Pot**, Boston and Sandwich Glass Works, Sandwich, Massachusetts, 1830-1840. Bulbous form with applied solid circular foot, domed cover with inward folded rim, colorless, tooled galleried rim - pontil scar, ht. with cover 6 1/4 inches, greatest dia. 4 5/8 inches.

Similar in form and construction to B/K #1266 A well formed piece of early American tableware. Fine condition. \$300-600



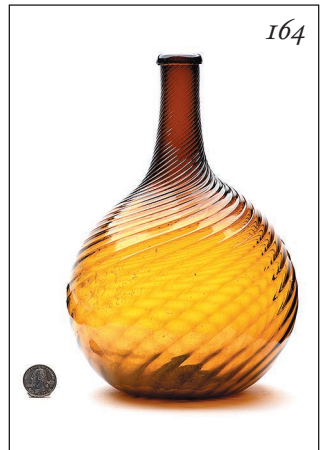
161. **Freeblown Pitcher With Ball Cover**, a South Jersey glasshouse, 1830-1850. Bulbous form flaring to rim with applied solid circular foot and applied solid ear form handle, rich aquamarine with profuse white loopings, tooled flared outward folded rim with pour spout - pontil scar, ht. with cover 10 1/8 inches, greatest dia. 5 inches, witch ball dia. 4 1/8 inches; (1 1/2 inch fissure at lower handle attachment). Similar in form and construction to P plate 90, left Beautiful early American freeblown tableware. Generally fine condition. \$300-600



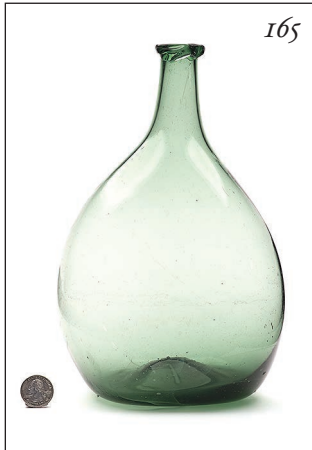
162. **Freeblown Egg Cup**, probably Pittsburgh district, Pittsburgh, Pennsylvania, 1840-1860. Chalice form, white milk glass with red loopings, tooled flared rim - smooth base, ht. 4 5/8 inches, greatest dia. 2 3/8 inches. A similar item is shown on PG plate 479 Probably a glassblowers offhand piece. Fine condition. \$150-300



163. **Pressed Glass Tumbler**, possibly New England Glass Company, Cambridge, Massachusetts, 1840-1860. Hexagonal base flaring to cylindrical rim, brilliant golden amber, tooled rim - pontil scar, ht. 3 1/4 inches, greatest dia. 3 1/4 inches. JK plate 138 Fine condition. \$100-200



164. **Pattern Molded Globular Bottle**, 24 ribs swirled to the right, a Zanesville glasshouse, Zanesville, Ohio, 1820-1840. Bulbous form, medium yellowish amber, outward folded mouth - pontil scar, ht. 9 1/2 inches, greatest dia. 6 1/8 inches; (light exterior high point wear, light scattered interior haze, light washable content residue). Similar in form and construction to MW color plate V, #1 A larger size than usually found with a strong mold impression. Fine condition. \$300-600



165. **Freeblown Chestnut Bottle**, New England, 1783-1830. Light to medium bluish green, applied round collared mouth - pontil scar, ht. 10 1/4 inches; (1/8 inch surface flake near base). Similar in form and construction to McK plate 224, #8 A pleasing high shouldered form and scarce color. With the exception of the small flake this bottle has a wonderful exterior surface. Generally fine condition. \$150-300



166. **Freeblown Witch Ball**, possibly Boston and Sandwich Glass Works, Sandwich, Massachusetts, 1840-1860. Spherical, colorless with pink and white loopings, rough mouth opening - smooth base, dia. 5 1/8 inches. Similar to B/K #3228 Fine condition. \$200-400



167. **Pair Of Pattern Molded Candlesticks**, 8 vertical ribs, Pittsburgh district, Pittsburgh, Pennsylvania, 1830-1850. Hollow bulbous shaft with double ringed tops, applied solid circular foot, colorless, tooled flared rims - pontil scars, ht. 10 1/2 inches, greatest dia. 5 inches; (one example has a 2 1/2 inch crack and resin repair on the socket). PG plate 187, #1 and McK plate 53, #3 This pair retains the pewter socket inserts. Big, bold and beautiful. \$200-400



168. **Paneled Cologne Bottle**, Boston and Sandwich Glass Works, Sandwich, Massachusetts, 1850-1870. Twelve sided form, medium to deep cobalt blue, tooled flared mouth - smooth base, ht. 4 3/4 inches. B/K #5197 A crude little example showing surface swirls and folds in the glass. Fine condition. \$100-200



169. **Large Freeblown Globular Bottle**, probably a Zanesville glasshouse, Zanesville, Ohio, 1815-1830. Bulbous form, bright yellowish orange amber, outward folded mouth - pontil scar, ht. 12 inches, greatest dia. 8 inches; (1/2 inch surface bubble on shoulder has disturbance of the cover glass, shallow 3/4 inch open surface bubble at base of neck, light exterior wear). Similar in form and construction to McK plate 224, #5 Both the large size and the fact that it is unpatterned make this example rare. Generally fine condition. \$200-400



170. **Paneled Cologne Bottle**, Boston and Sandwich Glass Works, Sandwich, Massachusetts, 1850-1870. Tall twelve sided form, medium to deep amethyst, tooled flared mouth - smooth base, ht. 7 3/8 inches. Similar to B/K #5197 A wonderful exterior shading and attractive shading. Fine condition. \$150-300



171. **Freeblown Celery Vase**, superimposed gadrooning on bowl from 20 rib mold, probably Pittsburgh district, Pittsburgh, Pennsylvania, 1820-1840. Trumpet form vase with applied knop stem and solid circular foot, colorless, tooled flared rim - pontil scar, ht. 8 3/8 inches, greatest dia. 4 3/4 inches. PG plate 149, right Fine condition. \$300-600



172. **Freeblown Handled Drinking Vessel**, possibly Midwest America, 1800-1830. Cylindrical slightly flaring to rim with applied corrugated strap handle, aquamarine, tooled rim - pontil scar, ht. 4 1/4 inches, greatest dia. 3 1/2 inches; (1 1/4 inch fissure at lower handle attachment). Similar in form to PG color plate 3, right and PG plate 26, #4 \$150-300



173. **Lot Of Three Pressed Glass Shot Glasses**, possibly New England, 1840-1860. Cylindrical flaring to rim, emerald green, teal blue and rich sapphire blue, tooled rims - two are pontiled, ht. 2 3/8 inches, 2 3/4 inches and 2 7/8 inches; (sapphire example has 1/2 inch manufacturing flake on edge of base, emerald glass has 1 inch crack on rim). JK plate 139 and 142 Vivid color and pleasing mold designs. Generally fine condition. \$100-200



174. **Pattern Molded Pocket Flask**, 18 ribs swirled to the right, Midwest America, 1820-1840. Flattened chestnut form, yellowish golden amber, sheared mouth - pontil scar, ht. 6 1/4 inches; (light exterior high point wear). Similar in form and construction to MW plate 98, #6 A pleasing example with bold, well defined ribs and an unusual bright color. Fine condition. \$500-1000



175. **Freeblown Covered Sugar Bowl**, probably America, 1820-1840. Bulbous form with applied solid circular foot, domed cover with applied solid circular knob, rich cobalt blue with white milk glass rim, tooled galleried rim - pontil scar, ht. with cover 6 5/8 inches, greatest dia. 4 3/4 inches; (light scattered exterior wear marks). Similar in form and construction to PG plate 43 A vivid blue color accentuated by the milk glass rim. Fine condition. \$1000-2000



176. **Freeblown Witch Ball**, possibly Boston and Sandwich Glass Works, Sandwich, Massachusetts, 1840-1860. Spherical, white milk glass with blue and red loopings, rough mouth opening - smooth base, dia. 6 inches. Similar to B/K #3234 and 3235 Fine condition. \$250-500



177. **Pressed Glass Back Bar Bottle**, Boston and Sandwich Glass Works, Sandwich, Massachusetts, 1840-1860. Octagonal base flaring to shoulder, bright medium teal green, heavy applied double collared mouth - polished pontil scar, ht. 10 3/8 inches; (pinpoint surface bruise on the top of one arched panel, light exterior high point wear). B/K #1256b A very bright and clean exterior surface. Generally fine condition. \$350-700



178. **Freeblown Witch Ball**, possibly Boston and Sandwich Glass Works, Sandwich, Massachusetts, 1840-1860. Spherical, white milk glass with red loopings, rough mouth opening - smooth base, dia. 4 7/8 inches. Similar to B/K #3229 Fine condition. \$150-300



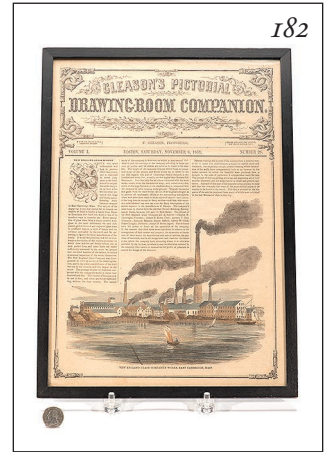
179. **Freeblown Chestnut Bottle**, New England, 1783-1830. Bright yellow with an olive tone, applied round collared mouth - pontil scar, ht. 9 1/2 inches; (1/16 inch open surface bubble near base). Similar in form and construction to McK plate 224, #11 Beautiful color and glass character. Fine condition. \$200-400



180. **Freeblown Creamer**, possibly early Pittsburgh district, Pittsburgh, Pennsylvania, 1820-1840. Bulbous form flaring to rim with applied solid circular foot and solid handle, medium amethyst, tooled flared rim with pour spout - pontil scar, ht. 4 1/4 inches, greatest dia. 2 5/8 inches. Similar in form and construction to McK plate 13, #9 Free of wear. Graceful form. Fine condition. \$200-400



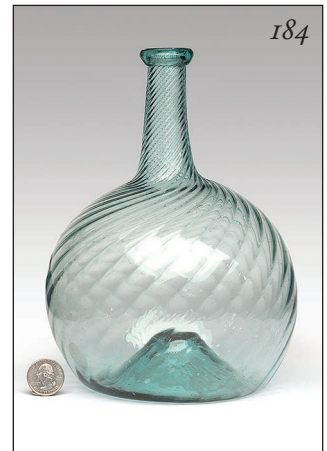
181. **Freeblown Hyacinth Glass**, possibly Pittsburgh district, Pittsburgh, Pennsylvania, 1830-1850. Bulbous form on applied solid circular base, deep cobalt blue, tooled flared rim - polished pontil scar, ht. 8 1/4 inches, greatest dia. 3 3/8 inches. Similar in form to McK plate 54, #6 Profuse surface swirls and rich, deep color. Fine condition. \$250-500



182. **Framed Edition Of "Gleason's Pictorial / Drawing-Room Companion."**, America, Saturday, November 8, 1851. Rectangular, black lettering with blue and brown coloring, 11 1/2 inches by 16 1/4 inches; (light usage wear). A highly graphic, colorful depiction and interesting description of the New England Glass Company's Works, East Cambridge, Massachusetts. Fine condition. \$300-600



183. **Freeblown Bowl**, Midwest America, 1820-1840. Cylindrical flaring to rim, brilliant orange amber, tooled outward rolled rim - pontil scar, ht. 4 1/4 inches, greatest dia. 8 1/2 inches; (just a hint of exterior wear). Similar in form to McK plate 82, #3 A beautiful early bowl in a eye catching bright color. Fine condition. \$300-600



184. **Pattern Molded Globular Bottle**, 24 ribs swirled to the right, a Zanesville glasshouse, Zanesville, Ohio, 1820-1840. Bulbous form, greenish aquamarine, applied round collared mouth - pontil scar, ht. 8 7/8 inches, greatest dia. 6 1/4 inches; (light exterior high point wear). Similar in form and construction to MW color plate V, #1 This example is somewhat larger than most, also having an unusual mouth application. Fine condition. \$300-600



185

185. **Pattern Molded Covered Sweetmeat Bowl**, Pittsburgh district, Pittsburgh, Pennsylvania, 1820-1840. 12 rib bowl on heavy baluster stem with flat shouldered base, 12 rib cover with folded rim, pontil scar on finial, colorless, outward folded rim - pontil scar, ht. with cover 6 3/4 inches, greatest dia. 5 3/4 inches; (light patchy interior haze). Similar in form and construction to PG plate 170 A beautiful piece of early Pittsburgh tableware. Fine condition. \$200-400



186

186. **Pressed Glass Tumbler**, possibly Pittsburgh district, Pittsburgh, Pennsylvania, 1840-1860. Cylindrical with nine arched panels around base, translucent robin's egg blue, tooled rim - smooth base with 18 pointed "star", ht. 3 1/2 inches, greatest dia. 3 1/2 inches; (1/8 inch flake on inner edge of rim). Similar forms are noted on PG pg. 301 A beautiful color with wonderful translucent qualities. Generally fine condition. \$100-200



187

187. **Freeblown Chestnut Bottle**, New England, 1783-1830. Medium yellow olive, applied round collared mouth - tubular pontil scar, ht. 11 7/8 inches; (several swirls near the lower body and base show internal manufacturing "crazing" fissures, the longest being 3 1/2 inches). Similar in form and construction to McK plate 224, #8 One of the most impressive chestnuts we've seen with profuse surface swirls which can be felt as well as seen. Magnificent size and form. Generally fine condition. \$150-300



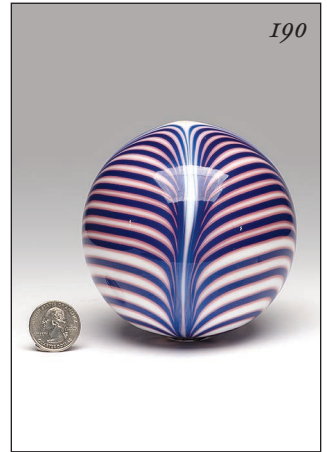
188

188. **Paneled Cologne Bottle**, Boston and Sandwich Glass Works, Sandwich, Massachusetts, 1850-1870. Twelve sided form, deep claret, inward folded mouth - pontil scar, ht. 4 inches; (pinpoint flake on top edge of mouth, light exterior high point wear). B/K #5198 A rare and beautiful color. Generally fine condition. \$150-300



189

189. **Pressed Glass Vase On Marble Base**, three piece mold construction, New England, 1840-1860. Hexagonal trumpet form vase, rich violet with cobalt tones, tooled flared gauffered rim - square white marble base, ht. 11 inches, greatest dia. 4 3/8 inches; (1/4 inch surface bruise and 1/2 inch chip on edge of base). Similar in form to B/K #3025 Beautiful form. Beautiful color. Generally fine condition. \$200-400



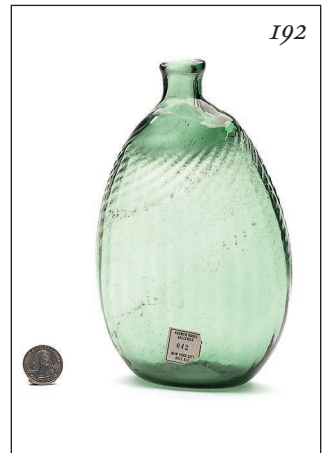
190

190. **Freeblown Witch Ball**, possibly Boston and Sandwich Glass Works, Sandwich, Massachusetts, 1840-1860. Spherical, white milk glass with blue and red loopings, rough mouth opening - smooth base, dia. 3 3/4 inches. Similar to B/K #3234 and 3235 Fine condition. \$300-600



191

191. **Pressed Glass Decanter**, probably Pittsburgh district, Pittsburgh, Pennsylvania, 1860-1880. Cylindrical with octagonal base, medium plum amethyst, sheared mouth with applied neck band - polished pontil scar, ht. with stopper 12 1/2 inches; (several points on edge of base have flakes, the largest being 3/16 inch, light exterior high point wear). Similar in form to American Glass 1760-1930 The Toledo Museum of Art Vol. 2, fig.889 Bottle retains period cork, metal and mother of pearl stopper marked "Brandy". Generally fine condition. \$200-400



192

192. **Pitkin Type Flask**, ribbed and swirled to the right, 32 ribs, probably Mid Atlantic region, 1800-1830. Medium yellowish green, sheared mouth - pontil scar, ht. 7 5/8 inches; (light exterior high point wear with areas of heavy wear on sides). Similar in form and construction to MW plate 89, #4 A somewhat elongated form with wonderful glass clarity. Early and attractive. Fine condition. \$250-500



193

193. **Lot Of Three Freeblown Marbles**, Germany, 1840-1860. Spherical, colorless with multicolor swirls and cores, polished pontil scars, dia. 1 3/4 inches, 2 inches and 2 3/16 inches; (middle sized example has a 2 1/2 inch internal fissure, all have overall usage wear). Beautiful colors and larger sizes. \$200-400



195

194. **Pressed And Blown Celery Vase**, Pittsburgh district, Pittsburgh, Pennsylvania, 1860-1870. Trumpet form vase with applied knob stem and solid circular foot, fiery opalescent vase, colorless foot and stem, tooled flared gauffered rim - polished pontil scar, ht. 8 3/8 inches, greatest dia. 5 inches. PG plate 255, #2 Fine condition. \$300-600

195. **Freeblown Pitcher**, possibly Pittsburgh district, Pittsburgh, Pennsylvania, 1820-1840. Flower pot form flaring to rim with applied hollow handle, medium cobalt blue, tooled flared rim with pour spout - pontil scar, ht. 7 5/8 inches, greatest dia. 4 1/4 inches; (light exterior high point wear). Similar in form and construction to PG plate 40, left A beautiful piece of early American tableware with a gracefully formed handle and vivid color. Fine condition. \$500-1000

196. **Pattern Molded Globular Bottle**, 24 ribs swirled to the right, a Zanesville glasshouse, Zanesville, Ohio, 1820-1840. Bulbous form, medium amber, outward folded mouth - pontil scar, ht. 7 5/8 inches, greatest dia. 5 1/8 inches; (light scattered exterior wear marks). Similar in form and construction to MW color plate V, #1 Attractive bright glass. Fine condition. \$400-800



197

196. **Pattern Molded Globular Bottle**, 24 ribs swirled to the right, a Zanesville glasshouse, Zanesville, Ohio, 1820-1840. Bulbous form, medium amber, outward folded mouth - pontil scar, ht. 7 5/8 inches, greatest dia. 5 1/8 inches; (light scattered exterior wear marks). Similar in form and construction to MW color plate V, #1 Attractive bright glass. Fine condition. \$400-800

197. **Freeblown Chestnut Bottle**, New England, 1783-1830. Bright olive yellow, applied round collared mouth - pontil scar, ht. 6 5/8 inches; (an area of thicker glass on surface shows 3/8 inch cooling fissure, potstone on shoulder has a tiny radiation). Similar in form to KW fig.47 No wear and a bright color highlight this beautiful example. Generally fine condition. \$100-200

198. **Freeblown Open Sugar Bowl**, Pittsburgh district, Pittsburgh, Pennsylvania, 1840-1860. Cylindrical bowl on applied solid circular foot with inward folded rim, colorless with opaque white loopings and applied string rim, applied rim - pontil scar, ht. 3 7/8 inches, greatest dia. 4 3/8 inches; (light exterior wear marks). Similar constructions are noted on PG plate 36, center and plate 488 Early and attractive. Fine condition. \$200-400



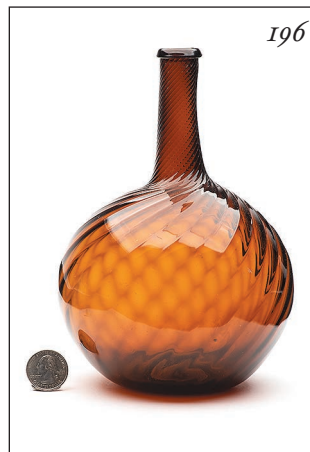
199

199. **Pair Of Freeblown Witch Balls And Stands**, possibly Boston and Sandwich Glass Works, Sandwich, Massachusetts, 1840-1860. Trumpet form with tooled stem and flaring base, opaque milk glass stands, white milk glass with multicolor splotches and colorless casing, tooled flared rims - pontil scars on base of stands, rough sheared opening on witch balls, ht. with witch balls 16 5/8 inches and 16 3/4 inches, greatest dia. of stand 4 1/2 inches, witch ball dia. 5 inches. Similar in form to B/K #3001a A well executed pair of stands and balls. Fine condition. \$400-800

200. **Freeblown Bowl**, probably Midwest America, 1820-1830. Cylindrical flaring to rim, light yellow green, tooled outward folded rim - pontil scar, ht. 2 5/8 inches, greatest dia. 7 inches. Similar in form and construction to PG plate 27, right A pristine example of early American tableware with a pleasing form and beautiful color. Fine condition. \$200-400



194



196



198

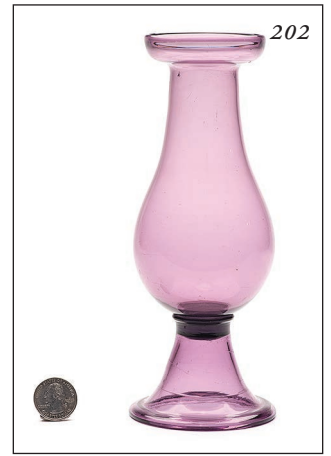


200





201. **Pattern Molded Pocket Flask**, 16 ribs swirled to the right, Midwest America, 1820-1840. Flattened coin form, aquamarine, sheared mouth - pontil scar, ht. 6 1/4 inches; (moderate exterior high point wear). Attractive size, form and pattern of swirled ribs. Fine condition. \$200-400



202. **Freeblown Hyacinth Glass**, Boston and Sandwich Glass Works, Sandwich, Massachusetts, 1830-1850. Bulbous form on applied inverted conical base with inward folded rim, light amethyst, tooled flared mouth - pontil scar, ht. 8 1/4 inches, greatest dia. 3 1/8 inches. B/K #3014b A very pretty color, a bit lighter than normally seen. Fine condition. \$200-400



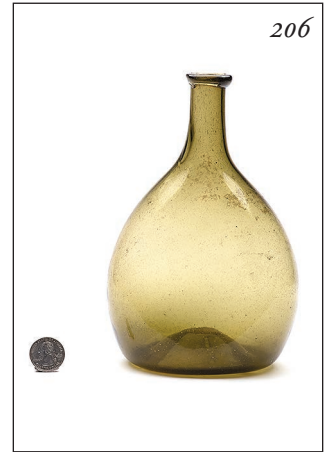
203. **Freeblown Witch Ball**, possibly Boston and Sandwich Glass Works, Sandwich, Massachusetts, 1840-1860. Spherical, bright golden amber with white milk glass loopings, rough mouth opening - smooth base, dia. 3 3/4 inches; (several open surface bubbles, the largest being 1/2 inch). GW color plate 5, top Thick bubbly glass with a crude exterior surface. \$300-600



204. **Freeblown Deep Bowl**, possibly Midwest America, 1820-1840. Cylindrical flaring to rim, light blue green, tooled outward folded rim - pontil scar, ht. 6 3/4 inches, greatest dia. 7 1/2 inches; (1/4 inch "star" fissure at mid body, moderate exterior wear and scratches). Similar in form and construction to PG plate 30 A crudely constructed jar with a somewhat lopsided form. Generally fine condition. \$200-400



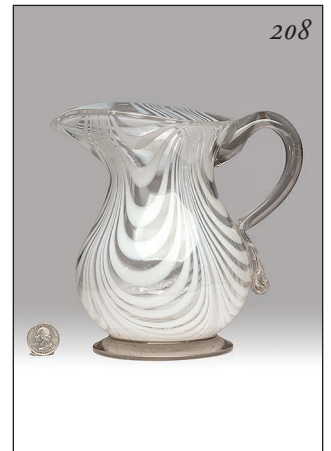
205. **Pressed Glass Tumbler**, possibly New England Glass Company, Cambridge, Massachusetts, 1840-1860. Cylindrical with seven Gothic arched panels around base and seven panels at mid body, medium cobalt blue, tooled rim - smooth base, ht. 3 3/8 inches, greatest dia. 3 3/8 inches. JK plate 142 Crude and bubbly. Fine condition. \$100-200



206. **Freeblown Chestnut Bottle**, New England, 1783-1830. Bright yellow olive, applied round collared mouth - pontil scar, ht. 7 7/8 inches; (light washable content residue). Similar in form and construction to MW color plate III, center Numerous small bubbles and surface swirls highlight this wonderful example. Fine condition. \$200-400



207. **Pressed Glass Back Bar Bottle**, Boston and Sandwich Glass Works, Sandwich, Massachusetts, 1840-1860. Octagonal base flaring to shoulder, bright canary yellow, heavy applied double collared mouth - polished pontil scar, ht. 10 1/4 inches; (roughness and wear along the top of the arched panels, pinpoint flake on one corner of base). B/K #1256b Wonderful glass clarity and bright color. Generally fine condition. \$350-700



208. **Freeblown Pitcher**, possibly Pittsburgh district, Pittsburgh, Pennsylvania, 1840-1860. Bulbous form flaring to rim with applied solid circular foot and applied solid handle, colorless with white loopings, tooled flared rim with pour spout - pontil scar, ht. 7 1/8 inches, greatest dia. 4 3/4 inches. Similar in form and construction to PG plate 477, center Wonderful workmanship and decoration. Fine condition. \$300-600



209

209. **Large Freeblown Globular Bottle**, probably a Zanesville glasshouse, Zanesville, Ohio, 1815-1830. Bulbous form, bright orange amber with reddish tones, outward folded mouth - pontil scar, ht. 12 1/8 inches, greatest dia. 8 7/8 inches; (light scattered exterior wear marks). Similar in form and construction to McK plate 224, #5 Beautiful, brilliant color and crude glass with surface swirls and impurities. Fine condition. \$400-800



211

210. **Pattern Molded Cruet**, 16 ribs slightly swirled to the left, Pittsburgh district, Pittsburgh, Pennsylvania, 1820-1840. Bulbous form with an applied hollow handle, brilliant cobalt blue, tooled flared mouth with pour spout and blown hollow stopper - pontil scar, ht. with stopper 8 1/2 inches, greatest dia. 4 1/8 inches; (light exterior high point wear, light interior haze). Similar in form and construction to PG plate 179, #2 A big bold piece of early American tableware. Eye appealing and graceful. Fine condition. \$400-800

211. **Freeblown Witch Ball**, possibly Boston and Sandwich Glass Works, Sandwich, Massachusetts, 1840-1860. Spherical, white milk glass with blue and red loopings, rough mouth opening - smooth base, dia. 3 5/8 inches. Similar to B/K #3234 and 3235 Fine condition. \$300-600

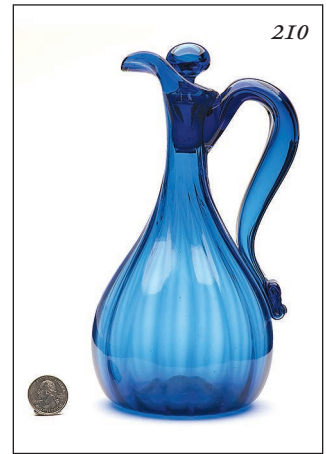
212. **Pocket Size Snuff Bottle With Spoon**, possibly America, 1840-1860. Flattened bulbous form, black with red and white surface splotches, polished mouth, brass and tigers eye quartz cap with spoon - polished pontil scar, ht. 2 3/8 inches, greatest dia. 1 3/4 inches. An attractive little gem in fine condition. \$200-400



213

213. **Pressed Glass Candlestick**, possibly Boston and Sandwich Glass Works, Sandwich, Massachusetts, 1840-1860. Hexagonal, bright teal green, smooth base, ht. 7 5/8 inches, base dia. 3 3/4 inches; (1/8 inch flake on point of socket). Similar in form to B/K #4026 Beautiful bright color and glass clarity. Generally fine condition. \$200-400

214. **Pattern Molded Celery Vase**, 8 heavy vertical ribs, Pittsburgh district, Pittsburgh, Pennsylvania, 1830-1850. Trumpet form vase on applied stem and solid circular foot, medium fiery clambroth, tooled flared gauffered rim - pontil scar, ht. 10 1/8 inches, greatest dia. 6 3/8 inches; (1/4 inch chip at base of one rib). Similar in form and construction to PG plate 179, #3 A wonderful pillar molded tableware item with a rare color and pleasing form. Generally fine condition. \$1000-2000



210



212



214



215

215. **Freeblown Covered Apothecary Storage Jar**, possibly Pittsburgh district, Pittsburgh, Pennsylvania, 1840-1860. Cylindrical with two applied bands on body, domed cover with polished top applied knob, colorless with cobalt blue bands, tooled rim - pontil scar, ht. with cover 15 7/8 inches, greatest dia. 6 1/4 inches; (2 1/2 inch crack on edge of base, two pinpoint flakes on upper edge of knob). A large attractive example with profuse surface swirls. \$100-200

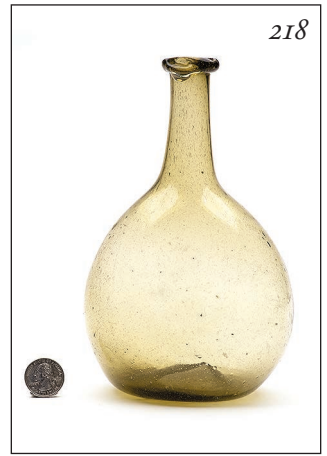
216. **Pattern Molded Pocket Flask**, 20 vertical ribs, Midwest America, 1820-1840. Flattened teardrop form, brilliant yellow, sheared mouth - pontil scar, ht. 6 1/2 inches; (light exterior high point wear). Similar in form and construction to McK plate 235, #1 A scarce rib count with a rare and brilliant color. Fine condition. \$400-800



216



217. **Engraved Pattern Molded Celery Vase**, 10 panels around base with engraved flowers and leaves at mid body, probably Pittsburgh district, Pittsburgh, Pennsylvania, 1830-1850. Trumpet form vase with applied knob stem and solid circular foot, colorless, outward folded flared rim - polished pontil scar, ht. 9 3/8 inches, greatest dia. 5 1/8 inches. Similar in form and construction to PG plate 128 An elegant form with pretty floral decorations. Fine condition. \$300-600



218. **Freeblown Chestnut Bottle**, New England, 1783-1830. Brilliant light olive yellow, applied round collared mouth - pontil scar, ht. 8 1/8 inches; (light exterior high point wear). Similar in form and construction to McK plate 224, #11 A pleasantly primitive example with small bubbles and impurities. Fine condition. \$200-400



219. **Pressed Glass Tumbler**, possibly New England Glass Company, Cambridge, Massachusetts, 1840-1860. Octagonal base flaring to cylindrical rim, medium violet with a cobalt tone, tooled rim - smooth base, ht. 3 1/4 inches, greatest dia. 3 inches. JK plate 141 A most unusual color. Fine condition. \$100-200



220. **Freeblown Covered Sugar Bowl**, probably Pittsburgh district, Pittsburgh, Pennsylvania, 1840-1860. Bulbous form with applied six footed crimped base, high domed cover with applied solid tooled and cut finial, milk glass with red and blue loopings cased with colorless glass, colorless finial and foot, tooled rim - pontil scar, ht. with cover 10 1/2 inches, greatest dia. 4 3/8 inches. Similar in form and construction to PG plate 487 A wonderful sugar bowl displaying quality workmanship and vibrant colors. Fine condition. \$1000-2000



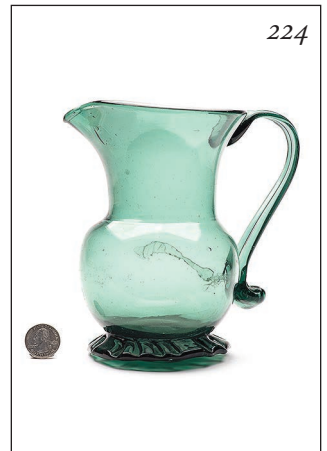
221. **Pattern Molded Globular Bottle**, 24 ribs swirled to the right, a Zanesville glasshouse, Zanesville, Ohio, 1820-1840. Bulbous form, medium to deep amber, outward folded mouth - pontil scar, ht. 7 1/4 inches, greatest dia. 5 1/8 inches; (light scattered exterior wear marks). Similar in form and construction to MW color plate V, #1 A classic Zanesville form with some attractive surface swirls. Fine condition. \$400-800



222. **Paneled Cologne Bottle**, Boston and Sandwich Glass Works, Sandwich, Massachusetts, 1850-1870. Tall twelve sided form, medium amethyst, outward folded mouth - smooth base, ht. 7 3/8 inches. Similar to B/K #5198 A beautiful bright color with profuse undulating surface swirls. Fine condition. \$150-300



223. **Freeblown Witch Ball**, possibly Boston and Sandwich Glass Works, Sandwich, Massachusetts, 1840-1860. Spherical, white milk glass with blue, green, red and yellow loopings, rough mouth opening - smooth base, dia. 3 7/8 inches. Similar to B/K #3234 and 3235 A fascinating combination of vivid colors. Fine condition. \$400-800



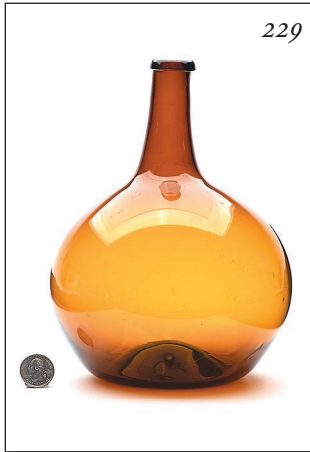
224. **Freeblown Pitcher**, possibly a South Jersey glasshouse, 1820-1840. Bulbous form flaring to rim with applied solid circular crimped foot and solid strap handle, medium bluish green, tooled flared rim with pour spout - jagged tubular pontil scar, ht. 7 inches, greatest dia. 4 1/4 inches; (the handle is intact but the lower attachment and corresponding 1 inch piece of glass have broken away from the body). Similar in form and construction to P fig. 7, left Early tableware in a beautiful color. An unusual piece of glass has adhered to the side of the body, as manufactured. \$150-300



225. **Freeblown Witch Ball And Stand**, possibly Midwest America, 1840-1860. Bulbous flaring to rim with knob stem and tooled hollow circular foot, colorless with red and white loopings, milk glass string around rim, tooled flared rim - pontil scar on base of stand, rough sheared opening on witch ball, ht. with witch ball 14 1/2 inches, greatest dia. of stand 4 inches, witch ball dia. 5 1/4 inches. Similar in form to PG plate 476 Attractive form and unusual decorations. Fine condition. \$400-800



226. **Pressed Glass Back Bar Bottle**, Boston and Sandwich Glass Works, Sandwich, Massachusetts, 1840-1860. Octagonal base flaring to shoulder with applied neck ring, bright medium cobalt blue, heavy applied double collared mouth - polished pontil scar, ht. 10 1/8 inches; (light exterior high point wear). B/K #1256a A very appealing example with beautiful glass shading and clarity. Fine condition. \$500-1000



227. **Freeblown Engraved Compote**, Pittsburgh district, Pittsburgh, Pennsylvania, 1820-1840. Cylindrical bowl on applied solid circular foot and knob stem, colorless, tooled flared outward folded rim - polished pontil scar, ht. 7 inches, greatest dia. 9 1/4 inches. Similar in form and construction to PG plate 146 An elegant piece of early American tableware with a beautifully flowing floral design. Fine condition. \$200-400



228. **Freeblown Bowl**, probably Midwest America, 1820-1830. Cylindrical flaring to rim, bright yellow olive, tooled outward folded rim - pontil scar, ht. 3 3/4 inches, greatest dia. 7 1/2 inches; (light scattered interior and exterior wear marks). Similar in form and construction to PG plate 27, right This example has an attractive form and a brilliant color. A real beauty in fine condition. \$250-500

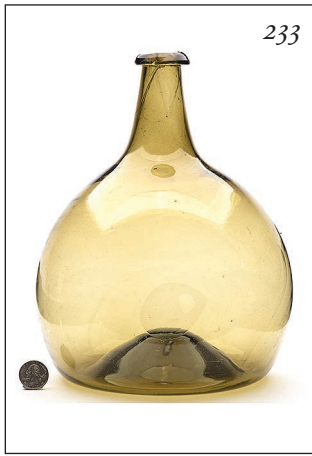
229. **Freeblown Globular Bottle**, Midwest America, 1815-1830. Bulbous form, bright orange amber, outward folded mouth - pontil scar, ht. 9 inches, greatest dia. 6 1/2 inches; (a 1/4 inch surface bubble near base has a minor disturbance of the cover glass). Similar in form and construction to MCK plate 224, #5 A brilliant example with "see through" glass and a clean wear free exterior surface. Generally fine condition. \$300-600

230. **Lot Of Three Pressed Glass Drinking Vessels**, probably New England, 1840-1860. Two have hexagonal bases flaring to cylindrical rims, one has a seven sided base flaring to a cylindrical rim, shades of opalescent milk glass, tooled rims - pontil scars, ht. (2) 2 1/4 inches and 3 3/8 inches. Similar to JK plate 138, 142 Fine condition. \$150-300

231. **Freeblown Carafe**, possibly Midwest America or South Jersey, 1850-1870. Bulbous form on applied solid circular foot, colorless with white milk glass loopings and cobalt blue rim on mouth, tooled flared mouth - pontil scar, ht. 9 3/8 inches, greatest dia. 4 1/4 inches. Similar in form to PG plate 478 Beautiful and graceful. Fine condition. \$200-400

232. **Pressed Glass Vase**, elongated loop pattern, possibly Boston and Sandwich Glass Works, Sandwich, Massachusetts, 1840-1860. Hexagonal trumpet form vase, standard and base, medium emerald green, tooled gauffered rim - smooth base, ht. 9 5/8 inches, greatest dia. 3 1/8 inches. American Glass 1760-1930 The Toledo Museum Of Art Vol. 1, #732 Bright and beautiful. Fine condition. \$400-800





233. **Freeblown Globular Bottle**, New England, 1783-1830. Bulbous form, bright yellow olive, applied round collared mouth - pontil scar, ht. 10 1/2 inches, greatest dia. 7 7/8 inches; (just a few scattered light exterior wear marks).
Similar in form and construction to MW color plate III, top left Interesting undulating surface swirls and a bright color. Fine condition. \$400-800



234. **Freeblown Witch Ball And Stand**, possibly Pittsburgh district, Pittsburgh, Pennsylvania, 1840-1860. Trumpet form with knob stem and hollow flaring base, colorless with opaque milk glass loopings, tooled flared rim - pontil scar on stand, rough sheared opening on witch ball, ht. with witch ball 15 5/8 inches, greatest dia. of stand 5 3/8 inches, witch ball dia. 7 inches.
Similar construction techniques are noted on PG plate 428, left A most impressive piece in size and form. Fine condition. \$350-700



235. **Pressed Glass Tumbler**, possibly New England Glass Company, Cambridge, Massachusetts, 1840-1860. Hexagonal base flaring to cylindrical rim, medium cobalt blue, tooled rim - polished pontil scar, ht. 4 inches, greatest dia. 3 7/8 inches.
JK plate 138 The base is embossed "6 S". Generally fine condition. \$100-200



236. **Pressed Glass Decanter**, probably Pittsburgh district, Pittsburgh, Pennsylvania, 1860-1880. Cylindrical with octagonal base, medium teal green, sheared mouth with applied neck band - polished pontil scar, ht. 10 1/8 inches; (light interior haze, two points on base have pinpoint flakes, light exterior high point wear).
Similar in form to American Glass 1760-1930 The Toledo Museum of Art Vol. 2, fig. 889 A heavy example in a beautiful rich color. Generally fine condition. \$200-400



237. **Freeblown Figural Bottle**, possibly Midwest America, 1840-1860. In the form of a bellows on applied solid knopf stem and circular foot, white milk glass with blue and red loopings, colorless applied decorations, applied double collared mouth - pontil scar, ht. 11 3/4 inches, greatest dia. 4 inches; (loss to upper area of applied spiraling string on neck).
Similar forms and construction techniques are noted on PG plates 46 and 47 Generally fine condition. \$150-300



238. **Freeblown Wide Mouth Jar**, probably Germany, circa 1800. Cylindrical, bright olive amber, outward folded rim - pontil scar, ht. 9 inches, greatest dia. 5 1/4 inches; (light exterior high point wear at base and shoulder areas).
Similar in form and construction to AG plate 290, #1 A large eye appealing jar with profuse surface swirls and a beautiful color. Fine condition. \$150-300



239. **Freeblown Globular Bottle**, Midwest America, 1815-1830. Bulbous form, light to medium blue green, applied heavy collared mouth - pontil scar, ht. 9 3/4 inches, greatest dia. 6 1/4 inches; (light exterior high point wear).
Similar in construction to MW color plate III, bottom left A sturdy and elegant bottle. Fine condition. \$200-400

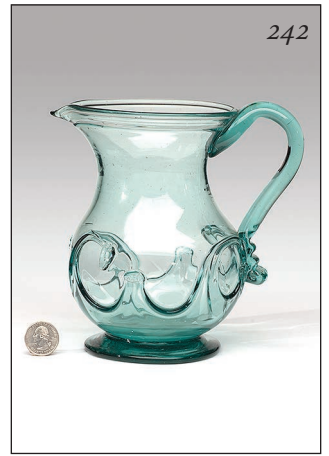


240. **Freeblown Vase**, possibly a South Jersey glasshouse, 1860-1880. Trumpet form with gauffered rim and tooled lower body, applied domed base with outward folded rim, white milk glass with light blue loopings, tooled flared rim - pontil scar, ht. 14 inches, greatest dia. 6 inches.
A real beauty with quality workmanship and impressive size. Fine condition. \$200-400



241

241. **Freeblown Bowl**, probably Midwest America, 1820-1830. Cylindrical flaring to rim, deep olive amber, tooled outward folded rim - pontil scar, ht. 4 3/8 inches, greatest dia. 5 3/8 inches; (light scattered interior and exterior wear marks). Similar in form and construction to McK plate 82, #3 Early, crude and built to last. Fine condition. \$400-800



242

242. **Freeblown Pitcher**, type III lily-pad decorations, probably New York state, 1830-1850. Bulbous form flaring to rim with applied solid circular foot and handle, rich greenish aquamarine, tooled flared rim with pour spout - pontil scar, ht. 7 inches, greatest dia. 4 5/8 inches; (9 inch crack travels around the lower portion of the body). American Glass 1760-1930 Vol. 1 The Toledo Museum Of Art, #128 A wonderful combination of color, form and workmanship. \$750-1500



243

243. **Pattern Molded Celery Vase**, 8 vertical ribs tightly swirled around the rim, Pittsburgh district, Pittsburgh, Pennsylvania, 1820-1840. Trumpet form vase with applied knob stem and solid circular foot, colorless, tooled flared rim - pontil scar, ht. 8 5/8 inches, greatest dia. 5 5/8 inches. PG plate 187, right Wonderful glass clarity and form. Fine condition. \$1000-2000



244

244. **Freeblown Chestnut Bottle**, New England, 1783-1830. Light to medium olive green, applied round collared mouth - pontil scar, ht. 5 1/8 inches; (light exterior high point wear). Similar in form and construction to KW plate 47, #5 A real sweetheart of a chestnut having wonderful form and size. Fine condition. \$200-400



245

245. **Freeblown Back Bar Bottle**, possibly early Pittsburgh district, Pittsburgh, Pennsylvania, 1820-1840. Bulbous form, bright golden amber with an olive tone, cobalt blue with white milk glass swirled stopper marble, heavy applied double collared mouth with metal, cork and glass stopper marked "Pat'd Oct. 13. 1863." - pontil scar, ht. with stopper 12 3/8 inches; (light exterior high point wear). Similar in form to American Glass 1760-1930 The Toledo Museum Of Art Vol. 2, #893 and #894 One of the earlier back bar bottles. Graceful form. Beautiful and unusual color. Fine condition. \$500-1000



246

246. **Freeblown Witch Ball**, possibly Boston and Sandwich Glass Works, Sandwich, Massachusetts, 1840-1860. Spherical, white milk glass with red loopings, rough mouth opening - smooth base, dia. 4 3/8 inches. Similar to B/K #3229 Retains metal chain and retainer. Fine condition. \$300-600



247

247. **Unusual Freeblown Bottle**, possibly New England, 1840-1860. Cylindrical, colorless with blue, pink and white loopings, tooled flared mouth - pontil scar, ht. with stopper 10 3/4 inches; (light exterior high point wear). Retains cork and brass stopper. Early and attractive. Fine condition. \$250-500



248

248. **Pressed Glass Tulip Vase**, Boston and Sandwich Glass Works, Sandwich, Massachusetts, 1845-1865. Octagonal tulip form attached with wafer to octagonal base, brilliant canary yellow, tooled flared scalloped rim - smooth base, ht. 10 inches, greatest dia. 5 1/2 inches; (1 inch crack and 3/4 inch chip on edge of base). Similar in form and construction to B/K #3021 Type b Wonderful bright color and eye appealing form. Displays as if perfect. \$200-400



249. **Pressed Glass Vase**, three printie block pattern, three piece mold construction, New England, 1855-1865. Trumpet form vase on hexagonal base, medium amethyst, tooled flared gauffered rim - smooth base, ht. 9 1/4 inches, greatest dia. 4 1/4 inches; (3/8 inch chip on base). American Glass 1760-1930 The Toledo Museum Of Art Vol. 1, fig. 737 Attractive color and form. Generally fine condition. \$200-400



250. **Paneled Cologne Bottle**, Boston and Sandwich Glass Works, Sandwich, Massachusetts, 1850-1870. Tall tapered twelve sided form, medium to deep cobalt blue with amethyst tones in the neck and base areas, tooled flared mouth - smooth base, ht. 8 5/8 inches; (pinpoint flake on edge of mouth). Similar in form to B/K #5197 A beautiful rich color with attractive shading. Generally fine condition. \$150-300



251. **Pattern Molded Pitcher**, 8 vertical ribs, probably Pittsburgh district, Pittsburgh, Pennsylvania, 1820-1840. Bulbous form flaring to rim with tooled foot and applied hollow handle, colorless, tooled flared rim with pour spout - pontil scar, ht. 6 1/2 inches, greatest dia. 3 3/4 inches. Similar in form and construction to PG plate 162, right A beautiful example of pillar molded table ware. Fine condition. \$200-400



252. **Freeblown Chestnut Bottle**, New England, 1783-1830. Medium olive amber, applied round collared mouth - pontil scar, ht. 10 7/8 inches; (light exterior high point wear). Similar in form and construction to McK plate 225, #6 A large and elegant example. Fine condition. \$200-400



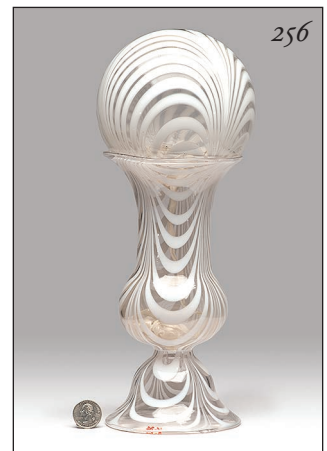
253. **Pressed Glass Decanter**, probably Pittsburgh district, Pittsburgh, Pennsylvania, 1860-1880. Cylindrical with octagonal base, brilliant canary yellow, sheared mouth with applied neck band - polished pontil scar, ht. 11 1/8 inches; (several shallow manufacturing fissures in base, light exterior high point wear). Similar in form to American Glass 1760-1930 The Toledo Museum Of Art Vol. 2, fig. 889 Beautiful bright color and form. Generally fine condition. \$200-400



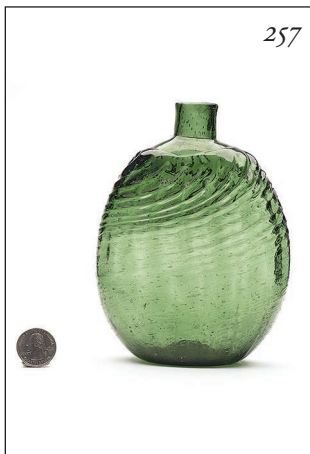
254. **Freeblown Decanter**, possibly a South Jersey glasshouse, 1840-1860. Cylindrical, medium teal green encased in colorless glass with white milk glass decorations, applied double collared mouth with ground interior - pontil scar, ht. 10 1/2 inches, dia. 3 3/8 inches; (light scattered exterior wear marks). Similar construction techniques and color are noted on P color plate 2, bottom A wonderful bottle in color and simplistic decoration. Fine condition. \$300-600



255. **Freeblown Chestnut Bottle**, New England, 1783-1830. Medium blue green, applied round collared mouth - pontil scar, ht. 5 3/8 inches; (light exterior high point wear). Similar in form and construction to McK plate 224, #13 Attractive high shouldered form and unusual color. Fine condition. \$150-300



256. **Freeblown Witch Ball And Stand**, possibly Pittsburgh district, Pittsburgh, Pennsylvania, 1840-1860. Bulbous flaring to rim with bell form foot, colorless with white milk glass loopings, tooled flared rim - smooth base, witch ball has rough sheared opening, ht. with witch ball 13 1/8 inches, greatest dia. of stand 4 5/8 inches, witch ball dia. 4 3/4 inches. Similar construction techniques are noted on PG plate 428 Witch ball with original silk ribbon and wood retainer. Fine condition. \$300-600



257

257. **Pitkin Type Flask**, ribbed and swirled to the right, 16 ribs, probably Mid Atlantic region, 1800-1830. Medium yellow green, sheared mouth - pontil scar, ht. 6 1/4 inches; (heavy exterior wear and scratches, 1/4 inch chip and bruise on top edge of mouth).

Similar in form and construction to MW plate 89, #8 Thick glass with a strong impression around the shoulder. \$200-400

258. **Freeblown Witch Ball And Stand**, possibly Boston and Sandwich Glass Works, Sandwich, Massachusetts, 1840-1860. Corseted form flaring at top and bottom, white milk glass stand, witch ball is white milk glass with red loopings, tooled flared rim - flared inward folded base, rough sheared opening on witch ball, ht. with witch ball 11 1/4 inches, greatest dia. of stand 4 1/4 inches, witch ball dia. 5 3/8 inches.

Witch ball similar to B/K #3229 Fine condition. \$300-600



258



259

259. **Pattern Molded Pitcher**, 8 vertical ribs, Pittsburgh district, Pittsburgh, Pennsylvania, 1845-1875. Cylindrical flaring to rim with applied neck ring and solid handle, colorless, tooled flared rim with pour spout - polished pontil scar, ht. 6 1/2 inches, greatest dia. 5 inches.

Similar in form and construction to PG plate 189, right A bold piece of pillar molded tableware that was built to last. Fine condition. \$350-700

260. **Freeblown Covered Sugar Bowl**, possibly a South Jersey glasshouse, 1840-1860. Straight sided form on applied funnel foot with inward folded base, freeblown cover with folded rim and solid tooled knob, deep sapphire blue with a violet tone, tooled rim - pontil scar, ht. with cover 6 7/8 inches, greatest dia. 3 7/8 inches; (1/2 inch chip on inner rim of cover, 1/4 inch surface flake on lower portion of knob).

Similar construction techniques are noted on P fig. 112, lower right An attractive piece of early American tableware. \$300-600



260



261

261. **Freeblown Witch Ball**, possibly Boston and Sandwich Glass Works, Sandwich, Massachusetts, 1840-1860. Spherical, medium cobalt blue with white milk glass loopings, rough mouth opening - smooth base, dia. 4 inches.

Similar to B/K #3227 Beautiful bright color. Fine condition. \$300-600

262. **Freeblown Globular Bottle**, New England, 1783-1830. Bulbous form, bright yellow olive, applied round collared mouth - pontil scar, ht. 11 1/4 inches, greatest dia. 8 inches; (light exterior high point wear).

Similar in form and construction to MW color plate III, top left A big, bright beauty with all the wonderful characteristics of early New England glass. Fine condition. \$400-800



262



263

263. **Freeblown Vase**, possibly Pittsburgh district, Pittsburgh, Pennsylvania, 1840-1860. Bulbous form flaring to rim with knop stem and applied solid circular foot, colorless with vertical pink and white strings, colorless foot, tooled flared inward folded rim - polished pontil scar, ht. 8 inches, greatest dia. 3 7/8 inches; (three areas of exterior surface roughness, the largest being 3/4 inch).

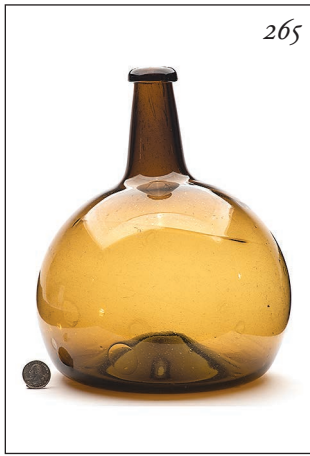
Similar form and construction techniques are noted on PG plate 439 Elegant. Fine condition. \$300-600

264. **Paneled Cologne Bottle**, Boston and Sandwich Glass Works, Sandwich, Massachusetts, 1850-1870. Twelve sided form, light emerald green, tooled flared mouth - smooth base, ht. 5 inches.

B/K #5198 A scarce and unusual color. Fine condition. \$100-200



264



265

265. **Freeblown Globular Bottle**, New England, 1783-1830. Bulbous form, medium yellowish golden amber, applied round collared mouth - pontil scar, ht. 10 1/2 inches, greatest dia. 8 1/8 inches; (3/8 inch open surface bubble near the wear ring at the base). Similar in form and construction to MW color plate III, top left. A unique example with various sized bubbles and strings of glass winding around the bottle. Generally fine condition. \$250-500



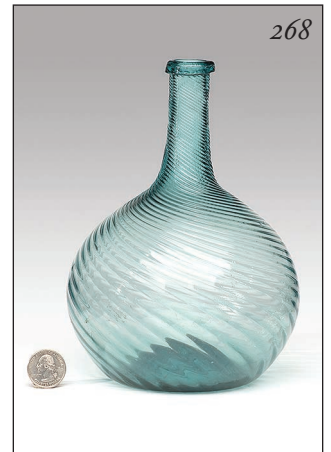
266

266. **Pattern Molded Vase**, possibly Pittsburgh district, Pittsburgh, Pennsylvania, 1820-1840. Cylindrical with 10 panels at lower body, hollow hourglass stem and applied solid circular foot, colorless, tooled rim - polished pontil scar, ht. 10 1/4 inches, greatest dia. 5 1/2 inches. PG plate 159, left. Interesting profuse surface swirls. Fine condition. \$250-500



267

267. **Freeblown Witch Ball**, possibly Boston and Sandwich Glass Works, Sandwich, Massachusetts, 1840-1860. Spherical, white milk glass with blue and red loopings, rough mouth opening - smooth base, dia. 3 7/8 inches. Similar to B/K #3234 and 3235. Bright and beautiful. Fine condition. \$150-300



268

268. **Pattern Molded Globular Bottle**, 24 ribs swirled to the left, a Zanesville glasshouse, Zanesville, Ohio, 1820-1840. Bulbous form, aquamarine, outward folded mouth - pontil scar, ht. 8 inches, greatest dia. 5 1/2 inches; (light exterior high point wear). Similar in form and construction to MW color plate V, #1. Simple, elegant and beautiful. Fine condition. \$200-400



269

269. **Pattern Molded Back Bar Bottle**, probably Pittsburgh district, Pittsburgh, Pennsylvania, 1840-1860. Inverted cone form with 8 heavy vertical ribs and applied neck ring, medium to deep teal blue, heavy applied double collared mouth - pontil scar, ht. 10 1/4 inches; (light exterior high point wear near the base, retains old cork in mouth). PG plate 183, right. Wonderful form, color, and condition. \$750-1500



270

270. **Freeblown Storage Jar**, probably France, 1800-1830. Cylindrical, light yellowish green, tooled flared mouth - pontil scar, ht. 11 1/8 inches, greatest dia. 5 3/16 inches; (light exterior high point wear). Similar in form and construction to AG plate 290, #2. This jar exhibits a lighter color than normally seen. Fine condition. \$100-200



271

271. **Lot Of Three Pressed Glass Tumblers**, possibly New England or Pittsburgh, 1840-1860. Cylindrical flaring to rim, light sapphire blue, bright yellow green and canary yellow, tooled rims - smooth bases, ht. 3 1/8 inches, 3 1/2 inches and 3 5/8 inches; (just a hint of exterior wear). JK plate 139 and PG plate 325. Wonderful examples with nearly wear free surfaces and beautiful bright colors. Fine condition. \$150-300



272

272. **Freeblown Vase**, Midwest America, 1840-1860. Conical form body flaring to shoulder on domed base with inward folded rim, tooled rings on exterior of flared neck, colorless with opaque milk glass loopings, tooled flared rim - pontil scar, ht. 9 1/2 inches, greatest dia. 5 3/8 inches. Similar in form and construction to PG plate 478. Wonderful glass clarity and form. Fine condition. \$300-600

*Beautiful, Bright and Colorful
Cologne Bottles*





Norman C. Heckler & Company

Auctioneers and Appraisers of Antique Bottles and Glass, Period Decorative Arts, Singular Art Objects, and Estates
79 Bradford Corner Road, Woodstock Valley, CT 06282 860-974-1634 www.hecklerauction.com info@hecklerauction.com

