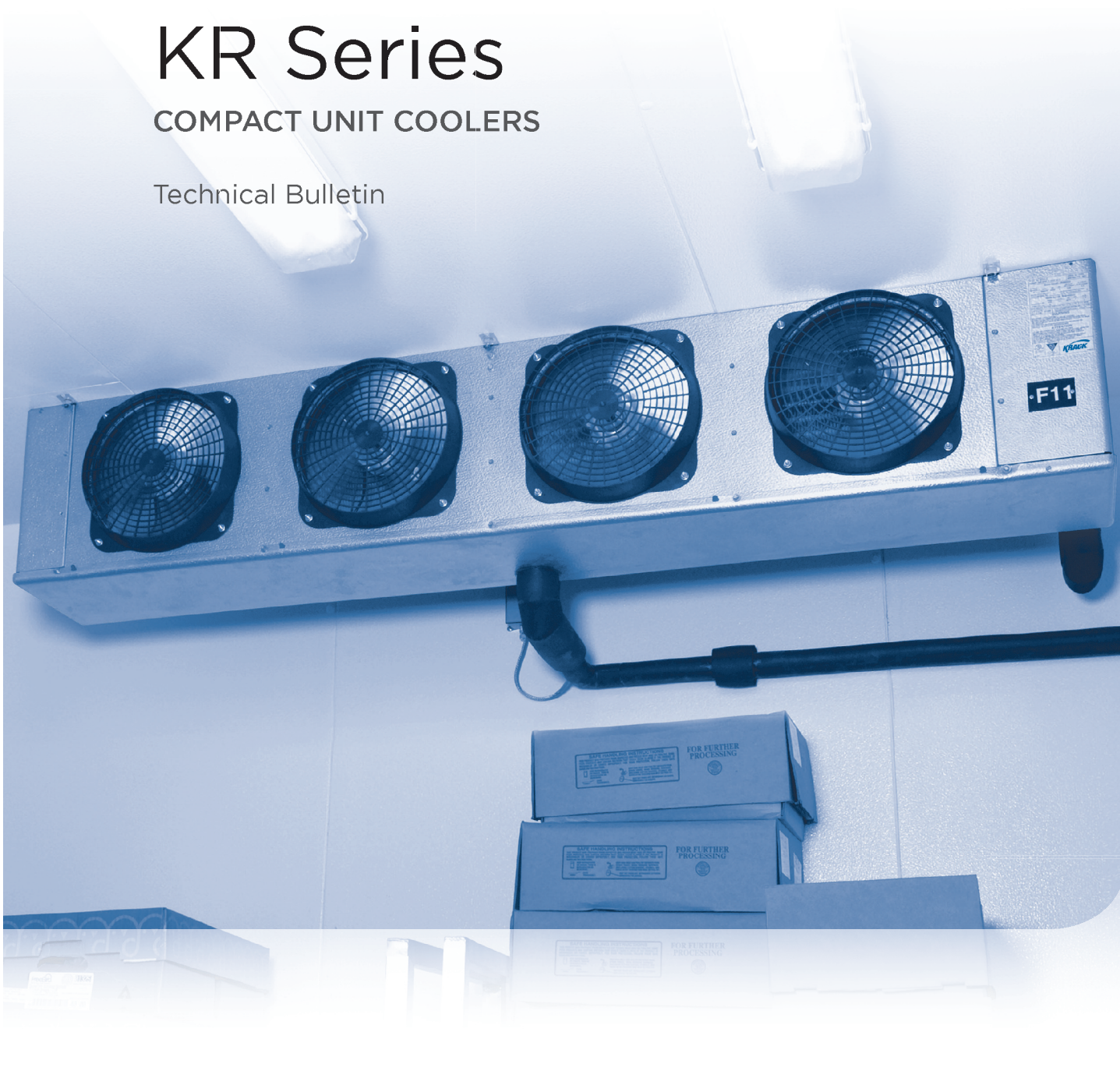




# KR Series

## COMPACT UNIT COOLERS

Technical Bulletin



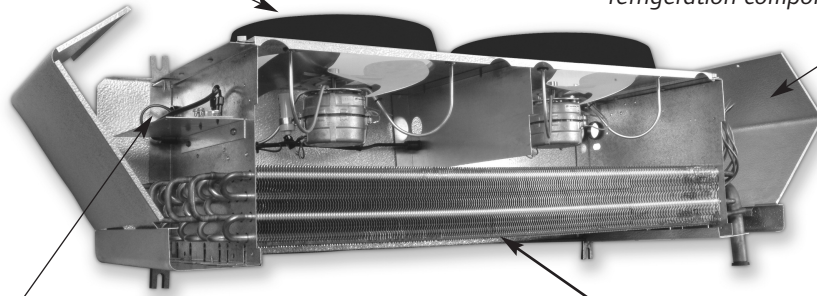
Products that provide lasting solutions.

# KR Series Compact Unit Coolers

*Provides Excellent Design Innovations  
That Enhance Overall Refrigeration Performance*

*New plastic fan guard provides protection over fan blades and optimizes air flow.*

*New front access to refrigeration components for easy access and serviceability. A hinged cover swings open or can be removed for easy access to refrigeration components.*



*Electrical panel located at end of unit cooler and protected by hinged aluminum cover. Electrical components are easily accessible for service.*

*Improved heat transfer through new rifled tubing and enhanced fin design.*

**The KR Compact Unit Cooler is specially designed with a low silhouette that fits flush to the ceiling utilizing less than 16 inches of headroom. This design gives you more usable storage space for every walk-in application. The KR Series is constructed for high efficiency and ease of maintenance.**

- Swept Wing Fan Blade Design - an industry exclusive – providing minimal noise and improved customer satisfaction.
- Plastic fan guard.
- Front access to refrigeration components for serviceability.
- Electrical panel located behind front access hinged aluminum cover.
- DOE compliant EC fan motors for 115/1/60 and 208-230/1/60.
- PSC fan motors for 115/1/60 and 208-230/1/60.
- Shaded pole fan motors for 460/1/60.
- Die-formed patterned aluminum cabinet and drain pan with easy-to-clean radius corners.
- Pressurized, sealed coils with heavy-walled copper tube and rippled full collar aluminum fins.
- Superheat gauge fitting.
- Electric defrost models feature efficient coil face heaters, drain pan heaters and defrost controls. Available heater voltages – 115/1 (H&P only), 230/1, 230/3, and 460/1.
- Factory wired fan and defrost controls with convenient terminal strips.
- Plug in motor leads.

## **Optional Features and Accessories**

- Installed TX valve.
- Installed liquid solenoid valve.
- Wire fan guard.
- Wiring scheme for Protocol and electronic control systems.

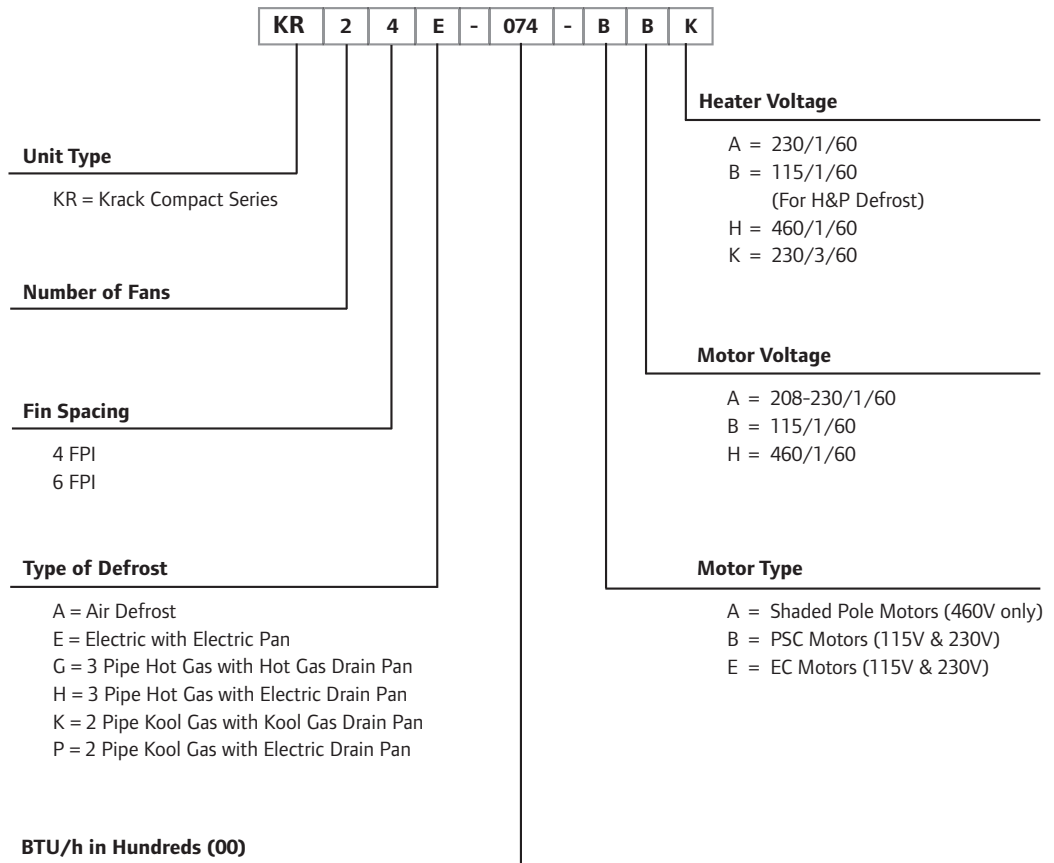
# KR Series Compact Unit Coolers

## Ordering Information

### Specify When Ordering All Models

- Complete model number.
- Refrigerant R22, R404A, or R507.
- Room temperature.
- Saturated suction temperature.
- Liquid refrigerant temperature.
- Motor and heater voltage.
- Optional features.
- Optional accessories.

## Model Key



# KR Series Compact Unit Coolers

## Air Defrost Low Profile

### MEDIUM TEMPERATURE

MODEL	CAP. (BTUH) @ 10° TD +25 SST	AIR FLOW (CFM)	REFRIGERATION CONNECTIONS			# OF HANGERS	CHARGE DATA LBS OF R-404A	DIMENSIONS (IN)			SHIPPING WGT. (LBS)
			LIQUID	SUCTION	HG			L	W	H	
KR16A-040	4,000	845	0.5	.625	0.5	4	1	29.13	15.32	15.90	55
KR16A-054	5,400	845	0.5	.625	0.5	4	1	29.13	15.32	15.90	60
KR16A-060	6,000	845	0.5	.625	0.5	4	1	29.13	15.32	15.90	60
KR26A-072	7,200	1,690	0.5	.875	0.5	4	2	29.13	15.32	15.90	90
KR26A-089	8,900	1,690	0.5	.875	0.5	4	2	47.13	15.32	15.90	100
KR26A-105	10,500	1,690	0.5	.875	0.5	4	2	47.13	15.32	15.90	100
KR26A-115	11,500	1,690	0.5	.875	0.5	4	2	47.13	15.32	15.90	100
KR26A-125	12,500	1,690	0.5	.875	0.5	4	2	47.13	15.32	15.90	100
KR36A-134	13,400	2,535	0.5	.875	0.5	4	2	65.13	15.32	15.90	120
KR36A-159	15,900	2,535	0.5	.875	0.5	4	3	65.13	15.32	15.90	140
KR36A-170	17,000	2,535	0.5	1.125	0.5	4	3	65.13	15.32	15.90	140
KR46A-216	21,600	3,380	0.5	1.125	0.5	6	3	83.13	15.32	15.90	180
KR56A-242	24,200	4,225	0.5	1.125	0.5	6	4	101.13	15.32	15.90	220
KR66A-310	31,000	5,070	0.5	1.125	0.5	6	5	119.13	15.32	15.90	265
KR66A-340	34,000	5,070	0.5	1.375	0.5	6	5	119.13	15.32	15.90	265
KR14A-058	5,800	855	0.5	.625	0.5	4	1	29.13	15.32	15.90	60
KR24A-096	9,600	1,750	0.5	.875	0.5	4	2	47.13	15.32	15.90	90
KR24A-117	11,700	1,710	0.5	.875	0.5	4	2	47.13	15.32	15.90	100
KR34A-143	14,300	2,625	0.5	.875	0.5	4	2	65.13	15.32	15.90	125
KR34A-173	17,300	2,565	0.5	1.125	0.5	4	3	65.13	15.32	15.90	140
KR44A-191	19,100	3,500	0.5	1.125	0.5	6	3	83.13	15.32	15.90	165
KR44A-232	23,200	3,420	0.5	1.125	0.5	6	3	83.13	15.32	15.90	180
KR54A-290	29,000	4,275	0.5	1.125	0.5	6	4	101.13	15.32	15.90	225
KR64A-348	34,800	5,130	0.5	1.375	0.5	6	5	119.13	15.32	15.90	265

## Electric Defrost Low Profile

### LOW TEMPERATURE

MODEL	CAPACITY (BTUH) @ 10° TD		AIR FLOW (CFM)	REFRIGERATION CONNECTIONS			# OF HANGERS	CHARGE DATA LBS OF R-404A	DIMENSIONS (IN)			SHIPPING WGT. (LBS)
	-20 SST	+20 SST		LIQUID	SUCTION	HG			L	W	H	
KR14E-037	3,700	5,000	875	0.5	.625	0.5	4	1	29.13	15.32	15.90	55
KR16E-035	3,500	4,730	845	0.5	.625	0.5	4	1	29.13	15.32	15.90	55
KR16E-041	4,100	5,540	845	0.5	.625	0.5	4	1	29.13	15.32	15.90	60
KR16E-045	4,500	6,080	845	0.5	.625	0.5	4	1	29.13	15.32	15.90	60
KR24E-065	6,500	8,780	1,750	0.5	.875	0.5	4	2	47.13	15.32	15.90	90
KR24E-074	7,400	9,990	1,750	0.5	.875	0.5	4	2	47.13	15.32	15.90	90
KR26E-067	6,700	9,050	1,690	0.5	.875	0.5	4	2	47.13	15.32	15.90	100
KR26E-075	7,500	10,130	1,690	0.5	.875	0.5	4	2	47.13	15.32	15.90	100
KR26E-090	9,000	12,150	1,690	0.5	.875	0.5	4	2	47.13	15.32	15.90	100
KR34E-111	11,100	14,990	2,625	0.5	.875	0.5	4	3	65.13	15.32	15.90	125
KR36E-126	12,600	17,010	2,535	0.5	.875	0.5	4	3	65.13	15.32	15.90	140
KR36E-135	13,500	18,230	2,535	0.5	.875	0.5	4	3	65.13	15.32	15.90	140
KR44E-148	14,800	19,850	3,500	0.5	1.125	0.5	6	3	83.13	15.32	15.90	165
KR46E-160	16,000	21,600	3,380	0.5	1.125	0.5	6	3	83.15	15.32	15.90	180
KR46E-180	18,000	24,300	3,380	0.5	1.125	0.5	6	3	83.15	15.32	15.90	180
KR54E-185	18,500	24,980	4,375	0.5	1.125	0.5	6	4	101.13	15.32	15.90	200
KR56E-192	19,200	25,920	4,225	0.5	1.125	0.5	6	4	101.13	15.32	15.90	220
KR64E-213	21,300	28,760	5,250	0.5	1.125	0.5	6	5	119.13	15.32	15.90	240
KR64E-220	22,000	29,700	5,250	0.5	1.125	0.5	6	5	119.13	15.32	15.90	240
KR66E-240	24,000	32,400	5,070	0.5	1.125	0.5	6	5	119.13	15.32	15.90	265
KR66E-270	27,000	36,450	5,070	0.5	1.125	0.5	6	5	119.13	15.32	15.90	265

# KR Series Compact Unit Coolers

## Hot Gas Defrost Low Profile

### LOW TEMPERATURE

MODEL	CAPACITY (BTUH) @ 10° TD		AIR FLOW (CFM)	REFRIGERATION CONNECTIONS			# OF HANGERS	CHARGE DATA LBS OF R-404A	DIMENSIONS (IN)			SHIPPING WGT. (LBS)
	-20 SST	+20 SST		LIQUID	SUCTION	HG			L	W	H	
KR14( )-037	3,700	5,000	875	0.5	.625	0.5	4	1	29.13	15.32	15.90	55
KR16( )-035	3,500	4,730	845	0.5	.625	0.5	4	1	29.13	15.32	15.90	55
KR16( )-041	4,100	5,540	845	0.5	.625	0.5	4	1	29.13	15.32	15.90	60
KR16( )-045	4,500	6,080	845	0.5	.625	0.5	4	1	29.13	15.32	15.90	60
KR24( )-065	6,500	8,780	1,750	0.5	.875	0.5	4	2	47.13	15.32	15.90	90
KR24( )-074	7,400	9,990	1,750	0.5	.875	0.5	4	2	47.13	15.32	15.90	90
KR26( )-067	6,700	9,050	1,690	0.5	.875	0.5	4	2	47.13	15.32	15.90	100
KR26( )-075	7,500	10,130	1,690	0.5	.875	0.5	4	2	47.13	15.32	15.90	100
KR26( )-090	9,000	12,150	1,690	0.5	.875	0.5	4	2	47.13	15.32	15.90	100
KR34( )-111	11,100	14,990	2,625	0.5	.875	0.5	4	3	65.13	15.32	15.90	125
KR36( )-126	12,600	17,010	2,535	0.5	.875	0.5	4	3	65.13	15.32	15.90	140
KR36( )-135	13,500	18,230	2,535	0.5	.875	0.5	4	3	65.13	15.32	15.90	140
KR44( )-148	14,800	19,850	3,500	0.5	1.125	0.5	6	3	83.13	15.32	15.90	165
KR46( )-160	16,000	21,600	3,380	0.5	1.125	0.5	6	3	83.15	15.32	15.90	180
KR46( )-180	18,000	24,300	3,380	0.5	1.125	0.5	6	3	83.15	15.32	15.90	180
KR54( )-185	18,500	24,980	4,375	0.5	1.125	0.5	6	4	101.13	15.32	15.90	200
KR56( )-192	19,200	25,920	4,225	0.5	1.125	0.5	6	4	101.13	15.32	15.90	220
KR64( )-213	21,300	28,760	5,250	0.5	1.125	0.5	6	5	119.13	15.32	15.90	240
KR64( )-220	22,000	29,700	5,250	0.5	1.125	0.5	6	5	119.13	15.32	15.90	240
KR66( )-240	24,000	32,400	5,070	0.5	1.125	0.5	6	5	119.13	15.32	15.90	265
KR66( )-270	27,000	36,450	5,070	0.5	1.125	0.5	6	5	119.13	15.32	15.90	265

NOTE: Available Types of Defrost: (K) KGG - 2 Pipe Kool Gas with Kool Gas Pan;  
(H) HGE - 3 Pipe Hot Gas with Electric Pan; (G) HGG - 3 Pipe Hot Gas with Hot Gas Pan;  
(P) KGE - 2 Pipe Kool Gas with Electric Pan

## Unit Electrical Data

MODEL	PSC MOTORS				SHADED POLE		EC MOTORS			
	115/1/60		208-230/1/60		460/1/60		115/1/60		208-230/1/60	
	AMPS	WATTS	AMPS	WATTS	AMPS	WATTS	AMPS	WATTS	AMPS	WATTS
1 FAN	0.8	74	0.4	74	0.6	100	0.7	47	0.4	44
2 FAN	1.6	148	0.8	148	1.2	200	1.4	94	0.9	88
3 FAN	2.4	222	1.2	222	1.8	300	2.2	141	1.3	132
4 FAN	3.2	296	1.6	296	2.4	400	2.9	188	1.8	176
5 FAN	4.0	370	2.0	370	3.0	500	3.6	235	2.2	220
6 FAN	4.8	444	2.4	444	3.6	600	4.3	282	2.6	264

NOTE: Information required for complete product Model Key - Motor Type, Voltage Code, Heater Voltage Code.  
Refer to Model Key on page 2.

# KR Series Compact Unit Coolers

## Electric Defrost Heater Data

LOW TEMPERATURE						
MODEL	230/1/60		230/3/60		460/1/60	
	AMPS	WATTS	AMPS	WATTS	AMPS	WATTS
1 FAN – 037, 035, 041, 045	4.4	1000	2.9	1000	2.2	1000
2 FAN – 065, 067, 074, 075, 090	8.8	2000	5.8	2000	4.4	2000
3 FAN – 111, 126, 135	13.2	3000	8.7	3000	6.6	3000
4 FAN – 148, 160, 180	17.6	4000	11.6	4000	8.8	4000
5 FAN – 185, 192	22.0	5000	14.5	5000	11.0	5000
6 FAN – 213, 220, 240, 270	26.4	6000	17.4	6000	13.2	6000

NOTE: Information required for complete product Model Key – Motor Type, Voltage Code, Heater Voltage Code.  
Refer to Model Key on page 2.

## Hot Gas Defrost Drain Pan Heater Data

LOW TEMPERATURE				
MODEL	115/1/60		230/1/60	
	AMPS	WATTS	AMPS	WATTS
1 FAN – 037, 035, 041, 045	2.6	300	1.3	300
2 FAN – 065, 067, 074, 075, 090	5.2	600	2.6	600
3 FAN – 111, 126, 135	7.0	800	3.5	800
4 FAN – 148, 160, 180	8.7	1000	4.4	1000
5 FAN – 185, 192	9.6	1100	4.8	1100
6 FAN – 213, 220, 240, 270	12.2	1400	6.1	1400

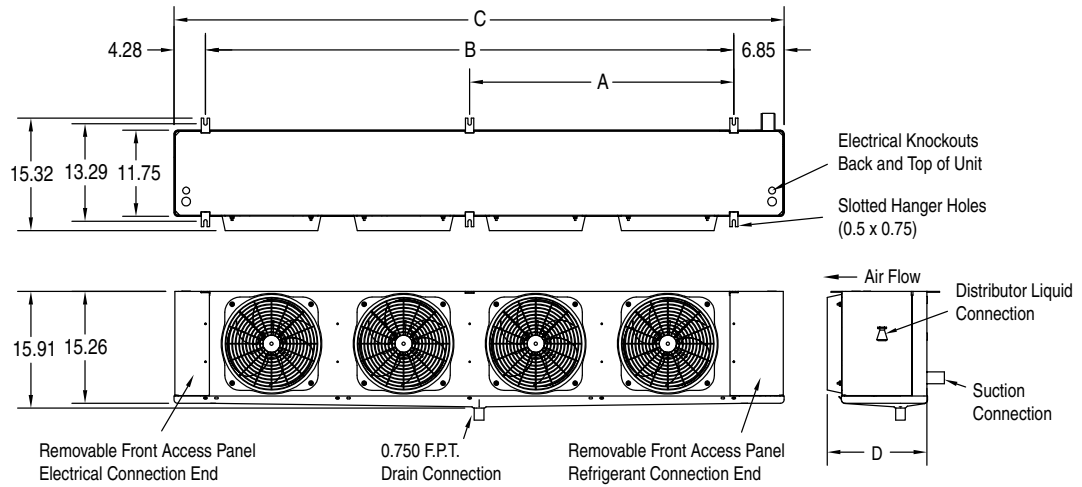
NOTE: Information required for complete product Model Key – Motor Type, Voltage Code, Heater Voltage Code.  
Refer to Model Key on page 2.

## Replacement Parts

DESCRIPTION	PART #	DESCRIPTION	PART #	DEFROST and DRAIN PAN HEATER E (EDL)	PART #
LOW NOISE FAN BLADE	4780670	SHADED POLE MOTOR (460V)	4410146	1 FAN	4850300
STANDARD PLASTIC FAN GUARD	4914791	EC MOTOR (115V)	4411123	2 FAN	4850301
OPTIONAL STEEL FAN GUARD	4915231	EC MOTOR (208-230V)	4411122	3 FAN	4850302
MOTOR MOUNT	4911162	DEFROST TERMINATION CONTROL	4480288	4 FAN	4850303
PSC MOTOR (115V)	4410806	FAN DELAY CONTROL	4480287	5 FAN	4850304
PSC MOTOR (208-230V)	4410807	LOW NOISE FAN BLADE (EC)	4780885	6 FAN	4850305

# KR Series Compact Unit Coolers

## Dimensional Data

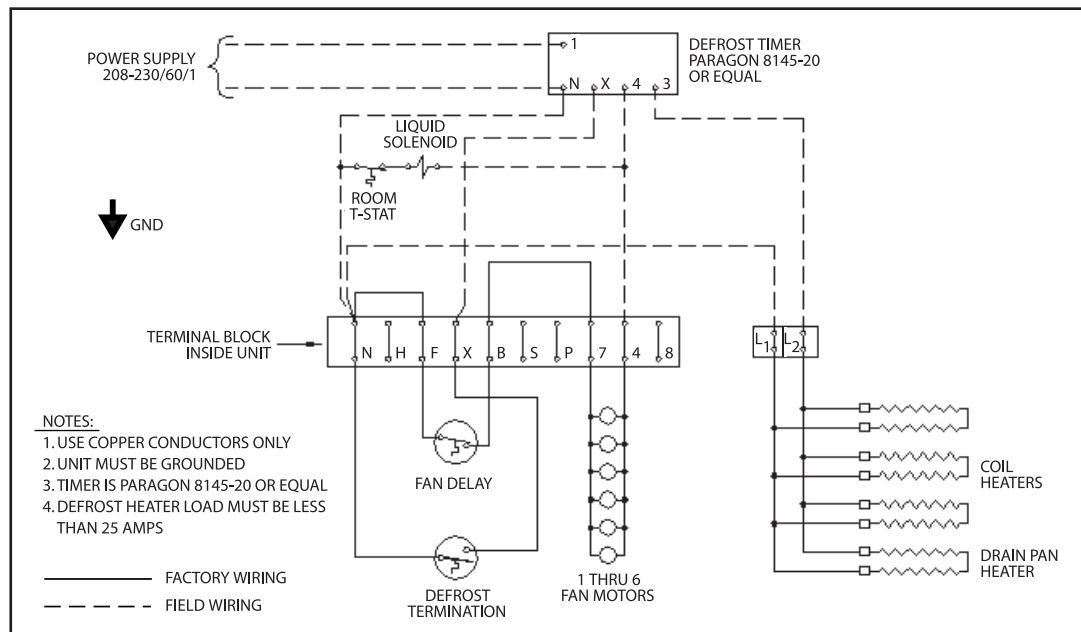


### UNIT DIMENSIONS

SIZE	A	B	C	D
1 FAN	-	18.0	29.13	15.32
2 FAN	-	36.0	47.13	15.32
3 FAN	-	54.0	65.13	15.32
4 FAN	36.00	72.0	83.15	15.32
5 FAN	54.00	90.0	101.13	15.32
6 FAN	54.00	108.0	119.13	15.32

*Note:*  
All dimensions in inches.  
Allow 15" clearance between rear of coil and wall for maximum efficiency and minimum noise level.  
12" left side clearance allows for optimum access to electrical connections.

## Typical System Wiring 208-230/60/1





**Krack Corporation**

1300 North Arlington Heights Rd., Suite 130  
Itasca, IL 60143  
Ph: 630.629.7500

[krack.com](http://krack.com)