

2 0 1 9
GRAND
CHEROKEE



Jeep

THE POWER TO RISE ABOVE



1
MOST LUXURIOUS
VEHICLE IN ITS CLASS*

SUMMIT®

2
BEST-IN-CLASS
OFF-ROAD CAPABILITY²

TRAILHAWK®

3
MOST POWERFUL
SUV EVER³

TRACKHAWK™ — 707 hp

4
BEST-IN-CLASS
TOWING⁴

UP TO 3,265 KG
(7,200 LB)

With the exceptional luxury and capability of the Most Awarded SUV Ever,⁵ you command every road with confidence while riding in utmost comfort. Soft premium leather-faced interior options and real open-wood accents pair with a long list of standard and available creature comforts and safety features.

Command rocky terrain, deep snow, ice, mud and sand with the confidence that's born of legendary Jeep® Brand 4x4.

Award-Winning engine options are offered as well, giving you the ability to enjoy Best-in-Class towing.⁴ Let Grand Cherokee usher you and your passengers with the confidence and pride that only come with an elite pedigree that can't help but be noticed wherever you choose to wander.

TABLE OF CONTENTS

SUMMIT®.....	4
UCONNECT®.....	6
SAFETY.....	9
CAPABILITY.....	10
POWERTRAINS.....	12
TRACKHAWK™.....	14
FABRICS.....	16
WHEELS/COLOURS.....	17
FEATURES AND OPTIONS.....	18
SPECIFICATIONS.....	22



MAKE A LASTING IMPRESSION

MOST LUXURIOUS VEHICLE IN ITS CLASS¹

Cushioned and quilted available upscale full-leather seats offer lush comfort, while the available leather-wrapped doors, centre console, glove box door, instrument panel and armrests are soft to the touch. The leather-wrapped steering wheel is a standard premium feature on all trim levels with available real-wood accents. First- and second-row seats have available heating. Ventilation is standard for the driver and front passenger.

Summit[®] shown with full-leather seats in Black

Summit[®] shown with available Signature Laguna Leather-Wrapped Interior Package in Ski Grey/Indigo Blue

GRAND CHEROKEE SUMMIT[®]

Travel at the very height of luxury with Grand Cherokee Summit, the Most Luxurious Vehicle in its Class! You're well-connected with a standard Uconnect[®] 4C NAV⁶ multimedia centre, including a new flush-mounted 8.4-inch full-colour touchscreen, that offers easy smartphone integration. Concert-like sound fills the cabin with the standard 19-speaker harman/kardon[®] audio system, including a 10-inch subwoofer.

The standard CommandView[®] Dual-Pane Panoramic Sunroof sends in the sunlight via two glass panes, including a single sliding-glass panel with a power-controlled sunshade in front and a fixed-glass window offering additional light in the rear.

A long list of standard features includes Bi-xenon High Intensity Discharge (HID) headlamps with headlamp washers and distinctive LED daytime running lamps. Safety features like Lane Departure Warning with Lane Keep Assist⁷ and Parallel and Perpendicular Park Assist⁷ help provide peace of mind while on the road. The standard 20-inch full-polished aluminum wheels complete a picture of perfection.



BRING THE WORLD CLOSER

Award-Winning Uconnect® systems are designed to safely keep you in touch while staying in the know. Busy lives benefit from useful resources that help accomplish tasks without skipping a beat. Hands-free communication® lets you maintain secure control.

Expand connections when you take available SiriusXM® services with you on your smartphone. Uconnect links you to a whole new world.



REMAIN FOCUSED

SIRIUSXM GUARDIAN Drive worry-free when you're equipped with SiriusXM Guardian¹⁰ – a premium suite of safety and convenience features that can be accessed in-vehicle or through the SiriusXM Guardian¹⁰ mobile app. Includes a one-year subscription.

SIRIUSXM GUARDIAN¹⁰ SERVICES

- Lock or unlock your car from virtually anywhere
- Start your car remotely
- Flash the lights and sound the horn to help find your car
- Locate your car on a map using Vehicle Finder
- Send destinations to your navigation system⁶ using Send & Go™
- Receive alerts with Theft Alarm Notification

NAVIGATION⁶ Uconnect employs GPS navigation⁶ with the available Uconnect 4C NAV multimedia centre displayed on an 8.4-inch touchscreen. You'll have audible turn-by-turn directions and detailed 3D maps, to help ensure you arrive on time. When equipped, the navigation system is also integrated into your 7-inch, full-colour, customizable in-cluster display.

VOICE COMMAND⁸ Use voice commands⁸ with your connected smartphone to create and send texts,¹¹ make and receive calls, access directions, and play music.

TOUCHSCREEN CONTROLS Set temperature controls, activate available heated seats and steering wheel, and so much more – all from your touchscreen.

DO NOT DISTURB This available feature allows you to see a visual prompt of incoming calls or texts and send an automated reply.¹¹



Conveniently use Apple CarPlay with your iPhone® while plugged in inside your vehicle.¹² Seamlessly integrate it with the Uconnect touchscreen and Siri® voice control.¹³ Make calls, access music, send and receive messages, get directions, and more while staying focused on driving. Standard.



Here's a safer way to use your plugged-in Android™ phone while driving.¹² Easily access Google Maps with voice-guided navigation⁶ and Google Play Music; make phone calls or send and receive messages by voice controls.⁸ Standard.

AT 8.4 INCHES, IT'S THE LARGEST TOUCHSCREEN IN ITS CLASS⁴



Apple CarPlay shown on touchscreen



SIRIUSXM SATELLITE RADIO⁹

Delivers over 120 channels, including commercial-free music, plus sports, news, talk and entertainment. It also allows you to receive alerts when your favourite song is playing on another channel. Includes one-year subscription. Standard.



SIRIUSXM TRAVEL LINK⁹ Access useful information when you need it, right at your fingertips. Get detailed weather maps, five-day forecasts and severe weather alerts, sports scores and in-game weekly schedules for your favourite teams, information for fuel prices in your area, and more. Your first five years of SiriusXM Travel Link⁹ are included. Available.



SIRIUSXM TRAFFIC⁹ Avoid congestion before you reach it. Get continuous updates on traffic speed, accidents, construction, road closures and more before you begin your travels. You will get to your destination faster and more easily than ever before. Your first five years of SiriusXM Traffic⁹ service are included. Available.



PREMIUM HARMAN/KARDON® SOUND SYSTEM

Its 825 watts of power furnish 19 speakers with impeccable surround-sound quality, including Active Noise Cancellation. Standard on Grand Cherokee Summit®. Optional on Overland®, SRT® and Trackhawk™.



ALL-AROUND ENTERTAINMENT

Keep the rear passengers entertained for the long haul with two available 9-inch, high-resolution screens mounted on the back of the front seats. The system can play standard DVDs, as well as Blu-ray® discs, and includes two sets of headphones, along with independent HDMI and RCA inputs for each screen.

ALPINE® SURROUND SOUND SYSTEM

This premium system utilizes Active Noise Cancellation, removing intrusive low-frequency sound. You'll hear it all via nine speakers and a subwoofer, powered by a 506-watt amplifier. Sound-absorbing technology pairs with the effect of the available acoustic glass to create a hushed, premium ride. Available.



INSPIRATION WITHIN REACH

YOU'RE ASSURED PEACE OF MIND

An array of sensors keeps watch of your perimeter and will notify you with audible and visual signals should another vehicle or object encroach your safety zones. With over 70 standard and available safety and security features, Grand Cherokee actively stands guard.



ELECTRONIC STABILITY CONTROL (ESC)¹⁴ A vehicle-wide network of safety sensors provides instant aid when it detects that the driver is veering off the intended path. ESC¹⁴ immediately goes into action by applying the brakes and reducing the throttle when needed.



LANE DEPARTURE WARNING WITH LANE KEEP ASSIST⁷ The vehicle's lane position is monitored by a camera mounted near the rearview mirror, and should the system detect the driver drifting outside of detected lane boundaries without a turn signal being activated, a visual warning is given along with a slight jerk of the steering wheel.



FORWARD COLLISION WARNING WITH ACTIVE BRAKING⁷ Sensors can detect when Grand Cherokee may be approaching another vehicle too quickly and send an audible and visual alert to the driver, along with 1.5 seconds of brake assistance if the driver does not react in time.



ADAPTIVE CRUISE CONTROL WITH STOP⁷ Engage this system and it will automatically adjust the cruising speed to maintain a preset distance between Grand Cherokee and the vehicles ahead.



BLIND-SPOT MONITORING WITH REAR CROSS-PATH DETECTION⁷ This available technology has dual radar sensors that constantly monitor driver blind spots, providing notification of an encroaching vehicle via illuminated icons on the sideview mirrors and an audible chime if the turn signal is activated. When the vehicle is in Reverse, Rear Cross-Path Detection⁷ sensors warn the driver with an audible chime if cross traffic approaches the vehicle.



PARKVIEW® REAR BACK-UP CAMERA⁷ When the vehicle is in Reverse, the standard ParkView® Rear Back-Up Camera⁷ is designed to assist the driver in detecting obstacles out of their line of sight during parking manoeuvres. When equipped with the 8.4-inch screen, it has view-at-speed functionality, allowing the driver to monitor their rear view in any gear with the touch of a button. Great for checking on trailers.



PARALLEL AND PERPENDICULAR PARK ASSIST⁷ This active and available guidance system controls steering automatically using ultrasonic sensors that help you ease into parking spots. Includes Park-Sense® Front and Rear Park Assist⁷ sensors.



PARK-SENSE® REAR PARK ASSIST SYSTEM⁷ When the vehicle is in Reverse, this standard system works with your ParkView Rear Back-Up Camera⁷ and rear-mounted sensors to detect the presence of objects up to approximately 2 metres from the rear. The system provides both audible and visual warnings in the Electronic Vehicle Information Centre. Available with front park assist sensors.



TRAILER SWAY CONTROL (TSC) Crosswinds or traffic hold no sway over you and your payload. As part of ESC,¹⁴ TSC monitors the vehicle's movement relative to your intended path, applies alternating brake pressure to slow the vehicle, then increases the pressure on one front wheel to counteract the sway induced by the trailer.



Overland® shown in Diamond Black Crystal Pearl

AUTHENTIC 4x4 AUTHORITY

SELEC-TERRAIN® TRACTION MANAGEMENT SYSTEM

With the turn of a dial, you can match your capability to the road conditions. Every Grand Cherokee equipped with the available Quadra-Trac II® or Quadra-Drive® II 4x4 systems includes a Jeep® Selec-Terrain® Traction Management System, adding even more confidence to tackle Mother Nature's toughest conditions.

A variety of settings helps deliver ultimate driving stability by coordinating 12 vehicle systems, including throttle control, transmission shifting, transfer case, traction control and Electronic Stability Control (ESC).¹⁴ Choose from up to five sure-footed modes: Auto, Snow, Sand, Mud and, exclusively on Trailhawk®, Rock.

AUTO When turned to this mode, Selec-Terrain does all the work, automatically adjusting vehicle dynamics to best suit the road. To help ensure optimal efficiency, the rear driveline disengages when not needed.

SNOW Adjusts for ultimate performance over snow- and ice-covered roads by maximizing vehicle stability and minimizing oversteer. Major systems auto-engaged and managed in this mode include antilock brakes and traction control.

SAND The system converts to a uniquely calibrated Sand mode that utilizes aggressive throttle and upshift points to tackle looser, sand-covered surfaces.

MUD Maximizes low-speed traction by allowing additional wheel-slip via specifically tuned chassis controls, differentials and transmission ratios that are geared to successfully tackle mud.

ROCK Delivers Trail Rated® 4WD Low capability thanks to its rear-differential locking element, allowing you to crawl over rugged terrain at appropriately safe speeds. Exclusively on Trailhawk.

ADJUST TO FIT CONDITIONS

QUADRA-TRAC I® Let this fully automatic 4x4 system do the thinking for you. It can adjust traction without need for driver input, so you can keep moving forward with an optimal balance of torque distribution. Standard on Laredo.

QUADRA-TRAC II® All-speed traction control quickly distributes torque to the axle with the most traction. The 2-speed transfer case acts quickly to keep you moving wherever challenging road conditions are found. Standard on Limited, Overland® and Summit®. Available on Laredo.

QUADRA-DRIVE® II With the Electronic Limited-Slip Differential, you can gain ultimate traction by transferring up to 100 percent of torque to the rear wheel(s) with the best grip, delivering Class-Leading capability.² Standard on Trailhawk®. Available on Limited, Overland and Summit.

SELEC-SPEED™ CONTROL Adds Hill Ascent Control to the familiar Hill Descent Control. Hill Ascent engages the throttle to help provide stable low-range control when going uphill, whereas Hill Descent uses engine and physical braking to aid in vehicle control when going downhill. Available.

OFF-ROAD PAGES Access real-time performance data so you know just how far your suspension is travelling, and see how you're faring on the trail with the tilt-and-pitch gauge. In-depth vehicle diagnostics, including wheel turn, articulation and transmission temperature, all help to provide an optimized experience. Included with 8.4-inch touchscreen.

QUADRA-TRAC® SRT® Here's an active on-demand 4x4 system made to partner with exceptional power. This exceedingly strong system features a massive mechanical "wet" clutch and rear Electronic Limited-Slip Differential. You're able to send 100 percent of available torque to either rear wheel, helping you to remain on course and moving forward, no matter the speed. Exclusive to SRT.³

QUADRA-LIFT® AIR SUSPENSION The system adjusts ride height and smooths on-road handling with four-corner load levelling, improves fuel efficiency, and eases entry, exit and loading. Quadra-Lift® raises Grand Cherokee up to 274 millimetres (10.8 inches), allowing for 508 millimetres (20 inches) of water fording¹⁵ — all with finger-touch control. Lower it 41 millimetres (1.6 inches) from normal for easier entry, exit and loading. Available.



Trailhawk shown in Billet Metallic
Always off-road responsibly in approved areas



Trailhawk shown in Green Metallic



OFF-ROAD 1



OFF-ROAD 2



AERO



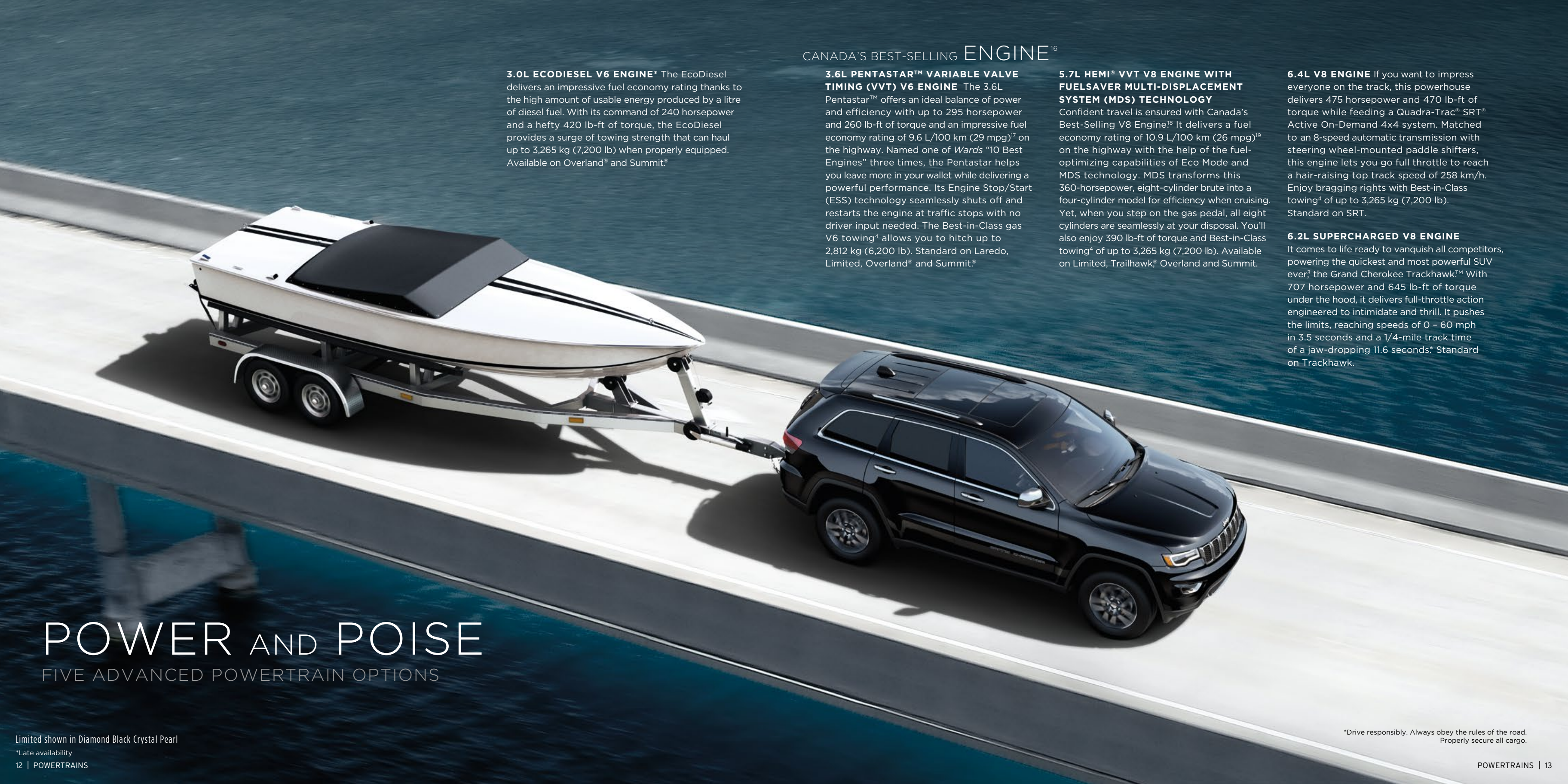
PARK



4x4 Off-Road Pages shown

TRAIL RATED® Every Jeep® Brand vehicle bearing a Trail Rated® badge is designed and built to Go Anywhere, Do Anything™ and perform with exceptional 4x4 capability. Each vehicle must successfully pass tests in five performance categories: Traction, Articulation, Manoeuvrability, Ground Clearance and Water Fording.¹⁵ Available.





CANADA'S BEST-SELLING ENGINE¹⁶

3.0L ECODIESEL V6 ENGINE* The EcoDiesel delivers an impressive fuel economy rating thanks to the high amount of usable energy produced by a litre of diesel fuel. With its command of 240 horsepower and a hefty 420 lb-ft of torque, the EcoDiesel provides a surge of towing strength that can haul up to 3,265 kg (7,200 lb) when properly equipped. Available on Overland[®] and Summit[®].

3.6L PENTASTAR™ VARIABLE VALVE TIMING (VVT) V6 ENGINE The 3.6L Pentastar™ offers an ideal balance of power and efficiency with up to 295 horsepower and 260 lb-ft of torque and an impressive fuel economy rating of 9.6 L/100 km (29 mpg)¹⁷ on the highway. Named one of *Wards* "10 Best Engines" three times, the Pentastar helps you leave more in your wallet while delivering a powerful performance. Its Engine Stop/Start (ESS) technology seamlessly shuts off and restarts the engine at traffic stops with no driver input needed. The Best-in-Class gas V6 towing⁴ allows you to hitch up to 2,812 kg (6,200 lb). Standard on Laredo, Limited, Overland[®] and Summit[®].

5.7L HEMI® VVT V8 ENGINE WITH FUELSAVER MULTI-DISPLACEMENT SYSTEM (MDS) TECHNOLOGY Confident travel is ensured with Canada's Best-Selling V8 Engine.¹⁸ It delivers a fuel economy rating of 10.9 L/100 km (26 mpg)¹⁹ on the highway with the help of the fuel-optimizing capabilities of Eco Mode and MDS technology. MDS transforms this 360-horsepower, eight-cylinder brute into a four-cylinder model for efficiency when cruising. Yet, when you step on the gas pedal, all eight cylinders are seamlessly at your disposal. You'll also enjoy 390 lb-ft of torque and Best-in-Class towing⁴ of up to 3,265 kg (7,200 lb). Available on Limited, Trailhawk[®], Overland and Summit.

6.4L V8 ENGINE If you want to impress everyone on the track, this powerhouse delivers 475 horsepower and 470 lb-ft of torque while feeding a Quadra-Trac[®] SRT[®] Active On-Demand 4x4 system. Matched to an 8-speed automatic transmission with steering wheel-mounted paddle shifters, this engine lets you go full throttle to reach a hair-raising top track speed of 258 km/h. Enjoy bragging rights with Best-in-Class towing⁴ of up to 3,265 kg (7,200 lb). Standard on SRT.

6.2L SUPERCHARGED V8 ENGINE It comes to life ready to vanquish all competitors, powering the quickest and most powerful SUV ever,³ the Grand Cherokee Trackhawk™. With 707 horsepower and 645 lb-ft of torque under the hood, it delivers full-throttle action engineered to intimidate and thrill. It pushes the limits, reaching speeds of 0 - 60 mph in 3.5 seconds and a 1/4-mile track time of a jaw-dropping 11.6 seconds.* Standard on Trackhawk.

POWER AND POISE

FIVE ADVANCED POWERTRAIN OPTIONS

Limited shown in Diamond Black Crystal Pearl

*Late availability

12 | POWERTRAINS

*Drive responsibly. Always obey the rules of the road. Properly secure all cargo.

POWERTRAINS | 13



STREET-SMART POWER PLAY

With a 707-horsepower Supercharged V8 engine living under the hood, the awe-inspiring Trackhawk™ is the quickest and most powerful SUV ever.² Within its well-appointed interior, you'll relish the thrill of the chase with exceptional power under your command.

QUADRA-TRAC® SRT® ON-DEMAND 4x4 SYSTEM

Authentic Jeep® Brand 4x4 resides in an Electronic Limited-Slip Rear Differential and a single-speed transfer case. Engage Launch Control to coordinate systems for textbook takeoffs.

SELEC-TRACK® WITH LAUNCH CONTROL Adjust your suspension based on the way you want to feel the road below. Press a button to choose from five performance settings: Track, Sport, Auto, Snow and Tow. Press the system's Launch Control button to optimize every possible setting for maximum acceleration off the line.

BREMBO® HIGH-PERFORMANCE BRAKE SYSTEM

Four-wheel disc antilock brakes provide important stopping power, from 97 km/h (60 mph) in 35 metres (115 feet). Massive 400-mm rotors on the front with six-piston calipers, and 350-mm rotors with four-piston calipers on the rear are clad in a distinctive Yellow finish.

PERFORMANCE PAGES Get instant power and torque readings, find out how much g-force you're creating, check fluid and pressure gauges, and record performance stats like 0-60 times, all on the Uconnect® touchscreen system. Available on Trackhawk.™

6.2L Supercharged V8 Engine



1/4-MILE IN 11.6 SECONDS



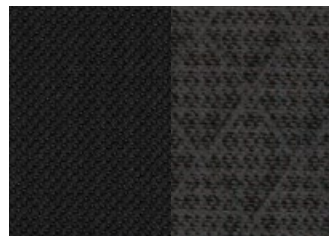
707 HORSEPOWER



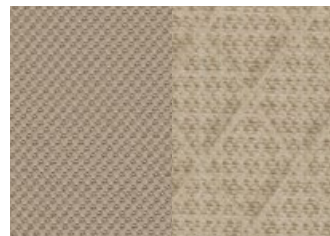
290 km/h TOP TRACK SPEED

Trackhawk™ shown in Velvet Red Pearl

FABRICS



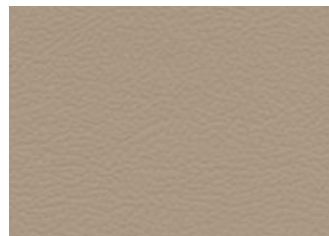
Premium cloth — Black
Standard on Laredo and Upland



Premium cloth — Light Frost
Standard on Laredo



Leather-faced with perforated suede inserts — Black with Black accent stitching
Standard with Altitude IV



Leather-faced — Light Frost
Standard on Limited



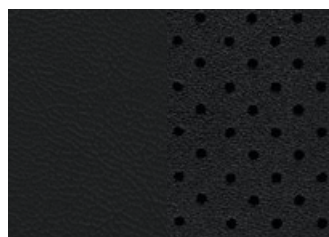
Leather-faced — Black
Standard on Limited and Limited X



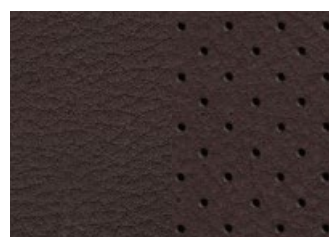
Nappa leather-faced with perforated suede inserts — Black with Ruby Red embroidered Trailhawk® logo and accent stitching
Standard on Trailhawk



Nappa leather-faced with perforated inserts — Black with Ruby Red embroidered Trailhawk logo and accent stitching
Available on Trailhawk with Trailhawk Luxury Group



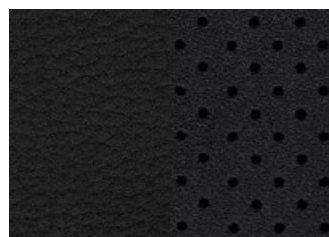
Nappa leather-faced with perforated inserts — Black with Black accent stitching on Limited; Black embroidered Overland® logo and Tungsten accent stitching on Overland
Standard on Overland and High Altitude; Available on Limited with Luxury Group II



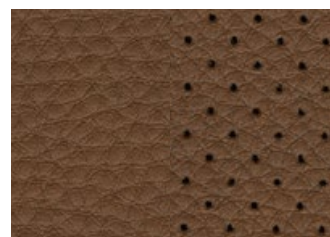
Nappa leather-faced with perforated inserts — Jeep, Brown with Jeep Brown embroidered Overland logo and Light Tungsten accent stitching and piping
Standard on Overland



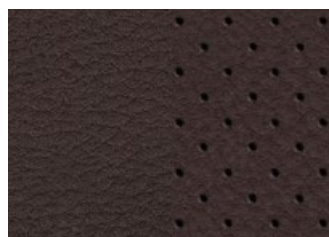
Nappa leather-faced with perforated inserts — Light Frost with Light Frost accent stitching (Light Frost embroidered Overland logo and Jeep Brown piping on Overland)
Standard on Overland; Available on Limited with Luxury Group II



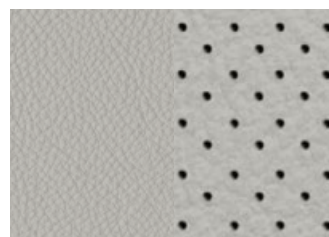
Natura Plus leather with perforated inserts — Black with Black embroidered Summit® logo and Tungsten accent stitching and piping
Standard on Summit



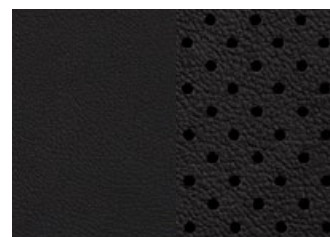
Natura Plus leather with perforated inserts — Tan with Tan embroidered Summit logo and Black accent stitching and piping
Standard on Summit



Natura Plus leather with perforated inserts — Jeep Brown with Jeep Brown embroidered Summit logo, Copper accent stitching and Jeep Brown piping
Standard on Summit



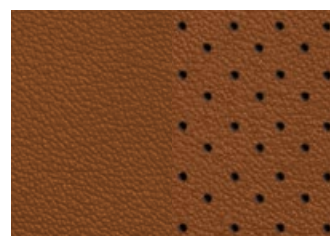
Laguna leather with perforated inserts — Ski Grey with Ski Grey embroidered Summit logo and accent stitching and Indigo Blue piping
Available on Summit with Laguna Leather Package



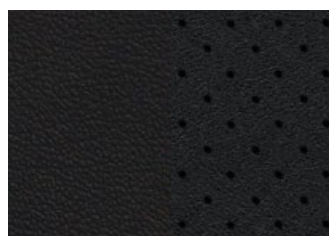
Laguna leather with perforated inserts — Black with Bridle Brown embroidered Summit logo and accent stitching and Light Tungsten piping
Available on Summit with Laguna Leather Package



Nappa leather-faced with perforated suede inserts — Black with Silver embroidered SRT® or Trackhawk™ logo and Tungsten accent stitching
Standard on SRT and Trackhawk



Nappa leather-faced with perforated suede inserts — Sepia with Silver embroidered SRT or Trackhawk logo and Tungsten accent stitching
Standard on SRT and Trackhawk



Laguna leather with perforated suede inserts — Black with embossed SRT or Trackhawk logo and Tungsten accent stitching
Available on SRT with Signature Leather-Wrapped Interior Group and Trackhawk



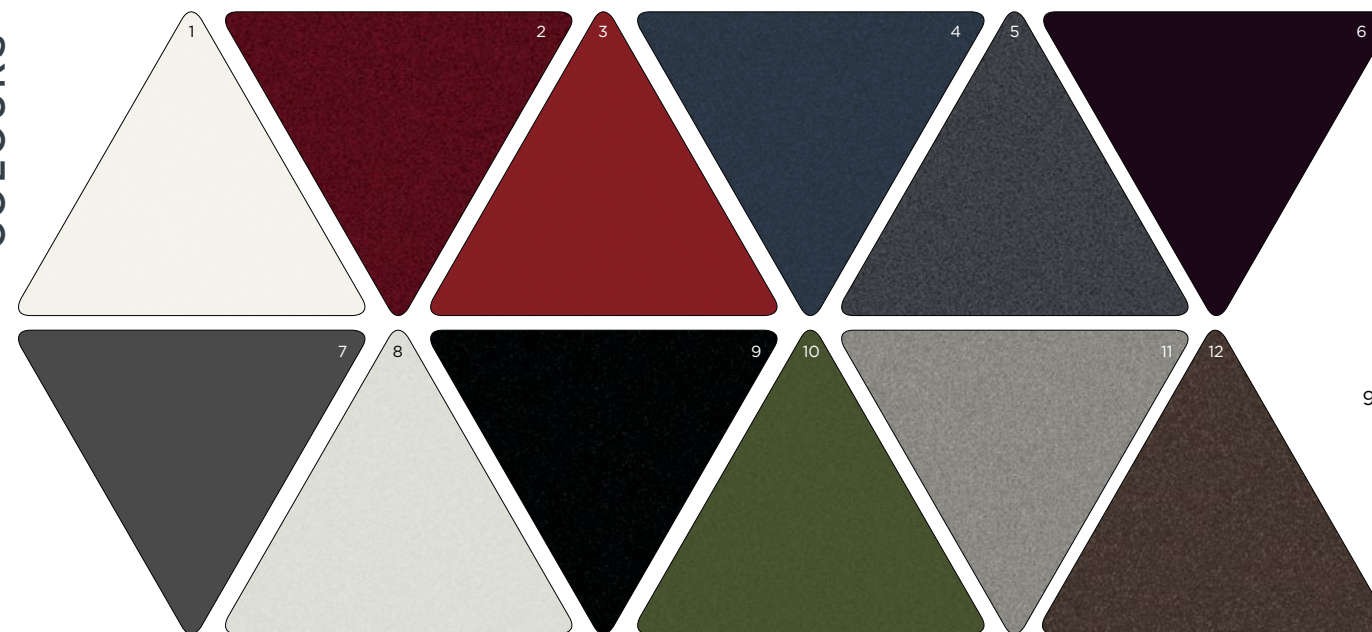
Laguna leather with perforated inserts — Demonic Red with embossed Trackhawk logo and Tungsten accent stitching
Available on Trackhawk

WHEELS



- 17-inch Tech Silver aluminum
Standard on Laredo
- 20-inch Gloss Black aluminum
Standard on Altitude IV
- 20-inch Gloss Black aluminum
Standard on Upland
- 20-inch Granite Crystal aluminum
Standard on Limited X
- 18-inch polished aluminum with Technical Grey pockets
Standard on Limited; Available on Overland® with Off-Road Adventure Group II and Laredo
- 18-inch polished aluminum with Low-Gloss Black pockets and Red Willys logo
Standard on Trailhawk®
- 20-inch polished aluminum with Technical Grey pockets
Standard on Overland; Available on Limited
- 20-inch Granite Crystal Satin-Gloss aluminum
Standard on High Altitude
- 20-inch full-polished aluminum
Standard on Summit®
- 20-inch Platinum aluminum
Available on Summit with Platinum Series Group
- 20-inch Satin Carbon split-spoke aluminum
Standard on SRT®
- 20-inch polished aluminum with Titanium pockets
Standard on Trackhawk™
- 20-inch Gloss Black aluminum
Available on SRT and Trackhawk

COLOURS*



- Bright White
- Velvet Red Pearl
- Redline Pearl
- Slate Blue Pearl†
- Granite Crystal Metallic
- Ultraviolet Metallic
- Sting-Grey†
- Ivory Tri-Coat Pearl
- Diamond Black Crystal Pearl
- Green Metallic†
- Billet Metallic
- Walnut Brown Metallic

*Exterior colour availability may vary by trim
†Late availability

LAREDO

POWERTRAIN

- 3.6L Pentastar™ Variable Valve Timing (VVT) V6 with Engine Stop/Start (ESS) technology
- 8-speed automatic transmission with E-shift

STANDARD EQUIPMENT

INTERIOR AMENITIES

- 7-inch, full-colour, customizable, in-cluster display centre
- Acoustic windshield and front-door glass with tint
- Air conditioning with Dual-Zone Automatic Temperature Control
- Cargo tie-down loops
- Full-length floor console and overhead console
- Illuminated entry and front cup holders
- Interior Gunmetal accents
- Interior LED lighting with integrated controls
- Leather-wrapped shift knob
- Leather-wrapped steering wheel with cruise and audio controls
- Luxury front and rear floor mats
- Media Centre:
 - 2 USB ports, auxiliary audio input jack
 - 6 speakers
 - Apple CarPlay and Android Auto™ with plug-and-play capability¹²
 - Hands-free communication⁸ with Bluetooth® streaming audio
 - SiriusXM satellite radio with 1-year subscription⁹
 - Two 12-volt auxiliary outlets
 - Uconnect® 4 multimedia centre with 7-inch touchscreen
- Power locks and windows with 1-touch up-and-down
- Seating:
 - 60/40 split-folding rear seats
 - Fold-flat front-passenger seat
 - Power 12-way driver's seat, including 4-way lumbar adjust
 - Premium cloth

EXTERIOR FEATURES

- 17-inch Tech Silver aluminum wheels
- Automatic quad-halogen projector headlamps
- Black lower fascia, claddings and wheel lip mouldings
- Body-colour grille with Bright inserts
- Body-colour mirrors and door handles
- LED taillamps and premium fog lamps
- Power, heated mirrors; manual-folding
- Rear window wiper/washer/defroster
- Roof rack with Bright side rails

SAFETY & SECURITY

- 3.45 rear axle ratio
- 4-wheel disc antilock brakes
- 7 air bags;²⁰ including driver's knee bolster
- Active front head restraints²¹
- Blind-Spot Monitoring and Rear Cross-Path Detection⁷
- Compact spare tire
- Electronic Stability Control (ESC)¹⁴ system with Hill Start Assist, Ready Alert Braking, 4-wheel Traction Control, Rain Brake Support and Trailer Sway Control
- Enhanced Accident Response System (EARS)
- Keyless Enter 'n Go™ with proximity entry and push-button start
- ParkView® Rear Back-Up Camera with dynamic grid lines and Park-Sense® Rear Park Assist⁷

CAPABILITY & FUNCTIONALITY

- Electric power steering
- Engine block and transmission heater
- Quadra-Trac I® 4x4 system
- Sport Mode and Eco Mode
- Tilt/telescoping steering column

OPTIONAL EQUIPMENT

- 18-inch Polished Aluminum Wheels with Technical Grey Pockets
- All-Weather Capability Group
- Off-Road Adventure Group I
- Power Sunroof
- Security and Convenience Group
- Single-Disc Remote CD player
- Trailer Tow Group IV

LIMITED

POWERTRAIN

- 3.6L Pentastar VVT V6 with ESS technology
- 5.7L HEMI® VVT V8 with Multi-Displacement System (MDS) technology
- 8-speed automatic transmission with E-shift

ENHANCEMENTS vs. LAREDO

- 18-inch polished aluminum wheels with Technical Grey pockets
- 115-volt auxiliary power outlet
- Auto-dimming rearview and exterior driver's mirror
- Bright door handles and front fascia insert
- Capability:
 - 3.09 axle ratio (5.7L)
 - Hill Descent Control
 - Quadra-Trac II® 4x4 system
 - Selec-Terrain® with Auto, Snow, Sand, and Mud settings
- Cargo compartment cover
- Chrome, power, heated mirrors with supplemental turn signals
- Dual exhaust with Bright tips (5.7L)
- Dual remote USB port for charging
- Heated leather-wrapped steering wheel
- Lower fascia Bright accent

POWERTRAIN

- Power liftgate
- Premium door trim panel
- Remote start
- Seating:
 - Leather-faced, heated 1st and 2nd rows
 - Memory settings for driver's seat, radio and exterior mirrors
 - Power 12-way front-passenger seat, including 4-way lumbar adjust
- Security alarm
- Single exhaust with Bright tip (3.6L)
- Universal garage door opener²²

OPTIONAL EQUIPMENT

- 20-inch Polished Aluminum Wheels with Technical Grey Pockets
- Alpine® Premium Audio System with 9 Speakers, Subwoofer and 506-Watt Amplifier
- Jeep, Advanced Active Safety Group
- Luxury Group II
- Off-Road Adventure Group II
- Power Sunroof
- Rear DVD Entertainment Centre
- Single-Disc Remote CD Player
- Trailer Tow Group IV



TRAILHAWK®

POWERTRAIN

- 3.6L Pentastar™ Variable Valve Timing (VVT) V6 with Engine Stop/Start (ESS) technology
- 5.7L HEMI® VVT V8 with Multi-Displacement System (MDS) technology
- 8-speed automatic transmission with E-shift

ENHANCEMENTS vs. LIMITED

- 18-inch polished aluminum wheels with Low-Gloss Black pockets and Red Willys logo
- Alpine® Premium Audio System with 9 speakers, subwoofer and 506-watt amplifier
- Auto-dimming, heated exterior mirrors with supplemental turn signals and memory;
- power-folding
- Black hood decal
- Body-colour door handles, front and rear fascias, and shark fin antenna
- Capability:
 - Class IV hitch receiver with 4- and 7-pin wiring harness
 - Electronic Limited-Slip Differential
 - Front suspension, transfer case, fuel tank and underbody skid plate shields
 - Heavy-duty engine cooling
 - Quadra-Drive® II 4x4 system
 - Quadra-Lift® Air Suspension System
 - Red tow hooks
 - Selec-Speed™ Control

- Dual Bright exhaust tips
- Full-size spare tire
- Gunmetal headlamp bezels
- Media Centre:
 - Uconnect® 4C NAV⁶ multimedia centre with 8.4-inch touchscreen
- Mopar® Slush Mats
- Neutral Grey exterior mirrors, grille, roof rack and badging
- Red Trail Rated® badge
- Seating:
 - Nappa leather-faced seats with perforated suede inserts and Ruby Red embroidered Trailhawk® logo and accent stitching
 - Ventilated front seats
- SiriusXM Guardian¹⁰
- SiriusXM Travel Link and SiriusXM Traffic, including a 5-year subscription⁹
- Steering wheel-mounted paddle shifters

OPTIONAL EQUIPMENT

- Jeep, Advanced Active Safety Group
- Mopar Rock Rails
- Power Sunroof
- Rear DVD Entertainment Centre
- Single-Disc Remote CD Player
- Trailhawk Luxury Group

OVERLAND®

POWERTRAIN

- 3.0L EcoDiesel V6 (Late Availability)
- 3.6L Pentastar VVT V6 with ESS technology
- 5.7L HEMI VVT V8 with MDS technology
- 8-speed automatic transmission with E-shift

ENHANCEMENTS vs. LIMITED

- 20-inch polished aluminum wheels with Technical Grey pockets
- Alpine Premium Audio System with 9 speakers, subwoofer and 506-watt amplifier
- Bi-xenon High Intensity Discharge (HID) automatic headlamps with auto-levelling, high-beam headlamp control and Gunmetal bezel finish
- Body-colour lower fascia, claddings and wheel lip mouldings
- Body-colour shark fin antenna
- Capability:
 - 800-amp battery (3.0L)
 - Chrome front tow hooks
 - Class IV hitch receiver with 4- and 7-pin wiring harness
 - Heavy-duty engine cooling
 - Quadra-Drive II 4x4 system (5.7L or 3.0L)
 - Quadra-Lift Air Suspension System
- Cargo net
- Chrome auto-dimming, heated exterior mirrors with supplemental turn signals and memory; power-folding
- CommandView® Dual-Pane Panoramic Sunroof
- Dual exhaust with Bright tips
- Full-size spare tire

- Genuine wood accents
- Gunmetal headlamp bezels
- Leather-wrapped instrument panel and centre console armrest
- LED daytime running lamps (DRLs) and fog lamps
- Luxury door trim panel
- Media Centre:
 - Uconnect 4C NAV⁶ multimedia centre with 8.4-inch touchscreen
- Power tilt/telescoping steering column
- Rain-sensing windshield wipers
- Seating:
 - Nappa leather-faced seating with perforated inserts, accent stitching and piping, and embroidered Overland® logo
 - Underseat lighting
 - Ventilated front seats
- SiriusXM Guardian¹⁰
- SiriusXM Travel Link and SiriusXM Traffic, including a 5-year subscription⁹
- Wood and leather-wrapped steering wheel

OPTIONAL EQUIPMENT

- harman/kardon® 19-Speaker Audio System with 825-Watt Amplifier
- Jeep Advanced Active Safety Group
- Off-Road Adventure Group II
- Rear DVD Entertainment Centre
- Single-Disc Remote CD Player



Shown with available sunroof





SUMMIT®

POWERTRAIN

- 3.0L EcoDiesel V6 (Late Availability)
- 3.6L Pentastar™ Variable Valve Timing (VVT) V6 with Engine Stop/Start (ESS) technology
- 5.7L HEMI® VVT V8 with Multi-Displacement System (MDS) technology
- 8-speed automatic transmission with E-shift

ENHANCEMENTS vs. OVERLAND®

- 20-inch full-polished aluminum wheels with Satin Clear Coat
- Active Noise Control System
- Adaptive Cruise Control with Stop⁷
- Advanced Brake Assist
- Blind-Spot Monitoring with Rear Cross-Path Detection⁷ and Forward Collision Warning with Active Braking⁷
- Bright premium grille
- harman/kardon® 19-speaker audio system with 825-watt amplifier
- Headlamp washers
- Illuminated door sill plates
- Lane Departure Warning with Lane Keep Assist⁷
- Luxury Berber floor mats
- Parallel and Perpendicular Park Assist⁷
- Premium accent cladding
- Premium LED fog lamps
- Premium suede-like headliner
- Seating:
 - Natura Plus leather seats with perforated inserts, accent stitching and piping, and embroidered Summit® logo
- Steering wheel-mounted paddle shifters

OPTIONAL EQUIPMENT

- Platinum Series Group
- Rear DVD Entertainment Centre
- Signature Laguna Leather-Wrapped Interior Package
- Single-Disc Remote CD Player
- Skid Plate Group

TRACKHAWK™

POWERTRAIN

- 6.2L Supercharged V8 with 707 horsepower and 645 lb-ft of torque
- 8-speed automatic transmission with E-shift

ENHANCEMENTS vs. SRT®

- 20-inch polished aluminum wheels with Titanium pockets
- Advanced leather multistage front air bags²⁰
- Black Chrome instrument-panel bezels
- Black Chrome quad exhaust tips
- Body-colour front and rear fascias with Gloss Black inserts
- Competition suspension
- Dark headlamp bezels
- Regenerative 4-wheel Brembo® high-performance brakes with Yellow brake calipers
- Selec-Track® Traction Control System including Custom mode
- “Supercharged” badge
- “Supercharged” sill plate
- Trackhawk™ Performance Pages

Note: does not include fog lamps

OPTIONAL EQUIPMENT

- 20-inch Gloss Black Aluminum Wheels
- 295/45ZR20 3-Season Pirelli® Tires
- CommandView® Dual-Pane Panoramic Sunroof
- Compact Spare Tire
- harman/kardon® 19-Speaker Audio System with 825-Watt Amplifier
- Rear DVD Entertainment Centre
- Signature Leather-Wrapped Interior Group
- Trailer Tow Group IV



SRT®

POWERTRAIN

- 6.4L SRT® V8 with MDS technology with 475 horsepower and 470 lb-ft of torque
- 8-speed automatic transmission with E-shift

SELECT STANDARD EQUIPMENT

- Alpine® Premium Audio System with 9 speakers, subwoofer and 506-watt amplifier
- Bright pedals
- Full-length floor console with premium leather-wrapped armrest
- Heated 2nd-row seats
- Heated and ventilated front seats
- Heavy-duty engine cooling
- Luxury floor mats with SRT logo
- Nappa leather-faced seats with perforated suede inserts
- Performance shift indicator
- Performance-tuned steering and suspension
- SRT Performance Pages
- Uconnect® 4C NAV® multimedia centre with 8.4-inch touchscreen

CAPABILITY & FUNCTIONALITY

- 3.70 rear axle ratio
- Active damping suspension
- Brembo® high-performance brakes with 4-piston rear and 6-piston front calipers
- Launch Control
- Quadra-Trac® SRT active on-demand 4x4 system
- Selec-Track® Traction Control System

EXTERIOR FEATURES

- 20-inch Satin Carbon split-spoke aluminum wheels
- 295/45ZR20 BSW all-season Pirelli® tires
- Bi-xenon High Intensity Discharge (HID) automatic headlamps with auto-levelling, Auto High-Beam Headlamp Control and headlamp washers
- Body-colour power, heated, auto-dimming exterior mirrors with supplemental turn signals
- Dark daylight opening moulding
- LED Daytime Running Lamps (DRLs)
- Premium LED fog lamps

OPTIONAL EQUIPMENT

- 20-inch Gloss Black Aluminum Wheels
- 295/45ZR20 3-Season Pirelli Tires
- CommandView® Dual-Pane Panoramic Sunroof
- Compact Spare Tire
- harman/kardon 19-Speaker Audio System with 825-Watt Amplifier
- Rear DVD Entertainment Centre
- Signature Leather-Wrapped Interior Group
- Trailer Tow Group IV



Limited in Velvet Red Pearl

SPECIFICATIONS⁵

TOWING, KG (LB)	LAREDO	LIMITED	TRAILHAWK [®]	OVERLAND [®]	SUMMIT [®]	SRT [®]	TRACKHAWK [™]
3.6L Pentastar [™] Variable Valve Timing (VVT) V6	2812 (6200)	2812 (6200)	2812 (6200)	2812 (6200)	2812 (6200)		
5.7L HEMI [®] VVT V8 Multi-Displacement System (MDS)		3265 (7200)	3265 (7200)	3265 (7200)	3265 (7200)		
3.0L EcoDiesel V6 (Late Availability)				3265 (7200)	3265 (7200)		
6.2L Supercharged V8							3265 (7200)
6.4L SRT [®] V8						3265 (7200)	

EXTERIOR, MM (IN) (EXCEPT WHERE NOTED)	
Wheelbase	2913 (114.7)
Overall Height (at roof rail/at antenna)	1761 (69.3) / 1779 (70.0)
Overall Width (including mirrors)	2154 (84.8)
Body Width	1943 (76.5)
Overall Length	4822 (189.8)
Front Track	1623 (63.9)
Rear Track	1627 (64.1)
Ground Clearance	218 (8.6) – Standard Suspension (Laredo and Limited) 274 (10.8) – Quadra-Lift [®] Air Suspension at Off-Road 2 206 (8.1) – Standard Suspension (SRT and Trackhawk [™])
Approach Angle (degrees)	26.2 – Standard Suspension (Laredo and Limited) 36.1 – Quadra-Lift Air Suspension at Off-Road 2 (air dam off) 18.0 – Standard Suspension (SRT and Trackhawk)
Ramp Breakover Angle (degrees)	19.0 – Standard Suspension (Laredo and Limited) 22.8 – Quadra-Lift Air Suspension at Off-Road 2 18.4 – Standard Suspension (SRT and Trackhawk)
Departure Angle (degrees)	24.0 – Standard Suspension (Laredo and Limited) 27.1 – Quadra-Lift Air Suspension at Off-Road 2 23.1 – Standard Suspension (SRT and Trackhawk)

INTERIOR, MM (IN)	FRONT	REAR
Headroom	1013 (39.9)	995 (39.2)
Legroom	1025 (40.3)	981 (38.6)
Hip Room	1449 (57.0)	1428 (56.2)
Shoulder Room	1491 (58.7)	1474 (58.0)

VOLUMES & CAPACITIES	
Behind Rear Seat, L (cu ft)	1027 (36.3)
Maximum Cargo Volume, L (cu ft)	1934 (68.3)
Seating Capacity	5
Fuel Tank Capacity, L (imp gal)	93.1 (20.5)

⁵Maximum ratings based on properly equipped vehicles.

POWER AND FUEL ECONOMY

Based on 2019 *EnerGuide* fuel consumption ratings. Government of Canada test methods used. Your actual fuel consumption will vary based on driving habits and other factors. For *EnerGuide* information, please ask your retailer or visit the Government of Canada Web site: www.vehicles.nrcan.gc.ca

ENGINE	TRANSMISSION	HORSEPOWER	TORQUE (LB-FT)	CITY L/100 KM (MPG)	HIGHWAY L/100 KM (MPG)
3.6L Pentastar VVT V6	8-speed automatic	295 [†]	260	12.7 (22)	9.6 (29)
5.7L HEMI VVT V8 MDS	8-speed automatic	360	390	16.7 (17)	10.9 (26)
3.0L EcoDiesel V6 (Late Availability)	8-speed automatic	240	420	TBD	TBD
6.2L Supercharged V8	8-speed automatic	707	645	20.9 (14)	13.8 (20)
6.4L SRT V8	8-speed automatic	475	470	18.3 (15)	12.6 (22)

[†]When equipped with dual exhausts. 290 with single exhaust.

PACKAGE AND MULTIMEDIA CENTRE DETAILS

ALL-WEATHER CAPABILITY GROUP

- Heated front seats and steering wheel
- Mopar[®] Cargo-Area Liner and Slush Mats
- Quadra-Trac II[®] 4x4 system with Hill Descent Control
- Remote start
- Selec-Terrain[®] with Auto, Snow, Sand, Mud and Rock settings
- Tow hooks; 2 front, 1 rear

JEEP[®] ACTIVE SAFETY GROUP

- Adaptive Cruise Control with Stop⁷
- Advanced Brake Assist
- Forward Collision Warning with Active Braking⁷
- Lane Departure Warning with Lane Keep Assist⁷
- Parallel and Perpendicular Park Assist⁷
- Rain-sensing windshield wipers

LUXURY GROUP II

- 9 Alpine[®] amplified speakers
- Auto High-Beam Headlamp Control and levelling
- Bi-xenon High Intensity Discharge (HID) headlamps
- CommandView[®] Dual-Pane Panoramic Sunroof
- Heated 2nd-row seats
- LED daytime running lamps (DRLs) and fog lamps
- Nappa leather-faced seating with perforated inserts
- Power tilt/telescoping steering column
- Rain-sensing windshield wipers
- Uconnect[®] 4C NAV⁶ multimedia centre with 8.4-inch touchscreen
- Ventilated front seats

OFF-ROAD ADVENTURE GROUP I

- Full-size spare tire
- Quadra-Trac II 4x4 system with Hill Descent Control
- Selec-Terrain with Auto, Snow, Sand, Mud and Rock settings
- Skid Plate Group
- Trail Rated[®] badge

OFF-ROAD ADVENTURE GROUP II

- 18-inch polished aluminum wheels with Technical Grey pockets (Overland[®])
- 265/60R18 BSW all-season tires
- Full-size spare tire
- Quadra-Drive[®] II 4x4 system
- Quadra-Lift[®] Air Suspension System
- Rear Electronic Limited-Slip Differential
- Selec-Speed[™] Control
- Skid Plate Group
- Trail Rated badge
- Trailer Tow Group IV

PLATINUM SERIES GROUP

- 20-inch Platinum aluminum wheels
- Body-colour door handles and exterior mirrors
- Body-colour side sills and front/rear fascias with Platinum Chrome accents
- Platinum Chrome grille and exterior badges
- Platinum Chrome rear step pad, side sill accents, daylight opening moulding, taillamp surround and roof rails

SECURITY AND CONVENIENCE GROUP

- 115-volt auxiliary power outlet
- Cargo compartment cover
- Heated front seats and steering wheel
- Power liftgate
- Remote start
- Security alarm
- Universal garage door opener²²

SIGNATURE LAGUNA LEATHER-WRAPPED INTERIOR PACKAGE — SUMMIT[®]

- Laguna leather centre console lid and armrests
- Laguna leather seats with perforated inserts
- Nappa leather-wrapped dashboard, lower panels and door panels

SIGNATURE LEATHER-WRAPPED INTERIOR GROUP — SRT[®] AND TRACKHAWK[™]

- Laguna leather seats with perforated inserts
- Laguna leather-wrapped door panels
- Nappa leather-wrapped lower panels and dashboard

SKID PLATE GROUP

- Front suspension and fuel tank skid plates
- Tow hooks; 2 front, 1 rear (Laredo, Limited)
- Transfer case and underbody skid plates

TRAILER TOW GROUP IV

- 4- and 7-pin wiring harness
- 180-amp alternator
- Class IV hitch receiver
- Full-size spare tire
- Heavy-duty engine cooling
- Rear load-levelling suspension (Laredo, Limited)

Note: package deletes rear tow hook if equipped

TRAILHAWK[®] LUXURY GROUP

- Bi-xenon HID automatic headlamps with Auto High-Beam Headlamp Control and auto-levelling
- Cargo compartment cover
- CommandView Dual-Pane Panoramic Sunroof
- Leather-faced seats with perforated inserts
- LED fog lamps and DRLs
- Power tilt/telescoping steering column
- Rain-sensing windshield wipers

ABOUT THIS CATALOGUE. Since the time of printing, some of the information you'll find in this catalogue may have been updated. Ask your retailer for details. Some of the equipment shown or described throughout this catalogue is available at extra cost. Specifications, descriptions, illustrative materials and all competitive comparisons contained herein are as accurate as known at the time this publication was approved for printing. FCA Canada Inc. reserves the right to make changes at any time without notice and without incurring obligation. For the price of the model with the equipment you desire or verification of specifications contained herein, see your Chrysler, Jeep, Dodge and Ram retailer.

©2019 FCA Canada Inc. All Rights Reserved. Chrysler, Dodge, Jeep, Ram, Mopar, SRT, the Jeep grille, Grand Cherokee Summit, CommandView, HEMI, Laredo, Mopar Vehicle Protection, Overland, Trailhawk, Park-Sense, ParkView, Quadra-Drive II, Quadra-Lift, Quadra-Trac, Quadra-Trac II, Selec-Terrain, Selec-Track, Trail Rated, Uconnect and Willys are registered trademarks, and Go Anywhere, Do Anything, Keyless Enter 'n Go, Pentastar, Selec-Speed, Send & Go and Trackhawk are trademarks of FCA US LLC.

Blu-ray is a trademark of Blu-ray Disc Association. Brembo is a registered trademark of Freni Brembo SpA. Pirelli is a registered trademark of Pirelli & C. S.p.A. ©2019 Pirelli Tire North America. All rights reserved. Bluetooth is a registered trademark of Bluetooth SIG, Inc. SIRIUS, XM and related marks and logos are trademarks of SiriusXM Radio Inc. Alpine and the Alpine logo are registered trademarks of Alpine Electronics, Inc. iPhone and Siri are registered trademarks of Apple Inc. All rights reserved. harman/kardon is a registered trademark and GreenEdge is a trademark of Harman International Industries, Inc. Facebook and logo are registered trademarks of Facebook, Inc. The Twitter logo is a service mark of Twitter, Inc. Instagram is a registered trademark of Instagram, Inc. Android and Android Auto are trademarks of Google LLC. Cummins is a registered trademark of Cummins, Inc.

MOPAR VEHICLE PROTECTION. FCA Canada Inc. has a vested interest in your satisfaction and owner experience with your new vehicle. Mopar Vehicle Protection offers extended service and maintenance plans to help ensure you'll enjoy your vehicle for many years down the road — for just pennies a day. For more information on comprehensive vehicle coverage, see your local Chrysler, Jeep, Dodge and Ram retailer or call (800) 465-2001.

WARRANTIES. 2019 Chrysler, Jeep, Dodge and Ram vehicles are backed by a 5-year or 100,000-kilometre fully transferable Powertrain Limited Warranty* with \$0 deductible plus 24-hour roadside assistance! SRT vehicles are backed by a 3-year or 60,000-kilometre fully transferable Powertrain Limited Warranty* with \$0 deductible plus 24-hour roadside assistance. Basic Warranty coverage is for 3 years or 60,000 kilometres! Rust-through coverage on all body sheet metal is for 3 years. The Cummins Turbo Diesel engine is protected by a separate Limited Warranty, covering the engine for 5 years or 160,000 kilometres! The EcoDiesel engine is backed by a 5-year or 100,000-kilometre fully transferable Powertrain Limited Warranty* with \$0 deductible plus 24-hour roadside assistance!

*Whichever comes first. Some conditions may apply. [†]The 5-Year/100,000-Kilometre Powertrain Limited Warranty does not apply to vehicles sold for certain commercial uses. See your retailer for full details.

DISCLAIMERS. 1. Based on *WardsAuto* Middle Sport/Utility segmentation. Based on Summit model offerings. 2. Based on *WardsAuto* Middle Sport/Utility segmentation. When properly equipped. 3. Based on *WardsAuto* UV segmentation. Based on 707 hp. Based on 0 – 60 mph in 3.5 seconds on a prepped surface. 4. Based on *WardsAuto* Middle Sport/Utility segmentation. When properly equipped. Excludes other vehicles designed and manufactured by FCA US LLC. 5. Jeep Grand Cherokee has received more awards over its lifetime than any other SUV. 6. Never program while driving. GPS mapping and available 3D navigation may not be detailed or available in all areas or reflect current road regulations. 7. This is a driver convenience system, not a substitute for active driver involvement. The driver must remain aware of his/her surroundings and be prepared to take corrective action to avoid collisions. 8. Driving while distracted can result in loss of vehicle control. Only use mobile phones and other devices, even with voice commands, when it is safe to do so. Voice commands of phone require a Bluetooth-compatible phone. 9. Requires SiriusXM radio subscriptions governed by SIRIUS terms and conditions available at siriusxm.ca. 10. All SiriusXM Guardian-equipped vehicles come with a 12-month trial effective on the date of purchase or lease of a new vehicle. Enrolment in the trial is required to receive service. Upon expiration of the trial period, purchase of a subscription is required to continue SiriusXM Guardian. Services can only be used where cellular coverage is available. See Uconnect and SiriusXM Guardian Terms of Service for complete service limitations. 11. Preset voice-to-text messaging and incoming text message reading require a MAP-enabled phone. 12. Driving while distracted can result in loss of vehicle control. Only use mobile phones and other devices, even with voice controls, when it is safe to do so. Apple CarPlay requires a compatible iPhone connected via USB cable to the Uconnect system. Android Auto requires the Android Auto app on Google Play and an Android-compatible smartphone running Android 5.0 (Lollipop) or higher. Data plan rates may apply. 13. Siri Eyes Free requires an iPhone equipped with Siri. Certain features not available while the vehicle is in motion. iPhone must be within active cellular range. Customer's existing iPhone data rates apply to Internet-supported features. 14. No system can repeal the laws of physics or overcome careless driving actions. Performance is limited by available traction, which snow, ice and other conditions can affect. When the warning lamp flashes, the driver needs to use less throttle and adapt speed and driving behaviour to prevailing road conditions. 15. Do not attempt water fording unless depth is known to be less than 508 mm (20 inches). Traversing water can cause damage that may not be covered by the new vehicle warranty. Always off-road responsibly in approved areas. 16. Based on IHSMarket Automotive Canadian New Vehicle Total Registrations for combined years 2013 to CYTD August 2018. 17. Based on 2019 *EnerGuide* fuel consumption ratings. 12.7 L/100 km (22 mpg) city. Government of Canada test methods used. Your actual fuel consumption will vary based on driving habits and other factors. Use for comparison purposes only. Ask your retailer for *EnerGuide* information. Miles per gallon (MPG) ratings based on imperial gallons. 18. Based on IHSMarket Automotive Canadian New Vehicle Total Registrations for combined years 2013 to CYTD August 2018. 19. Based on 2019 *EnerGuide* fuel consumption ratings. 16.7 L/100 km (17 mpg) city. Government of Canada test methods used. Your actual fuel consumption will vary based on driving habits and other factors. Use for comparison purposes only. Ask your retailer for *EnerGuide* information. Miles per gallon (MPG) ratings based on imperial gallons. 20. The Advanced Front Air Bags in this vehicle are certified to the Federal regulations for Advanced Air Bags. Children 12 years old and younger should always ride bucked up in a rear seat. Infants in rear-facing child restraints should never ride in the front seat of a vehicle with a passenger front air bag. All occupants should always wear their lap and shoulder belts properly. 21. Always sit properly with the head restraint properly adjusted. Never place anything in front of the head restraint. 22. Not compatible with all garage door openers.

jeep.ca



Check us out on:
[instagram.com/jeepca](https://www.instagram.com/jeepca)



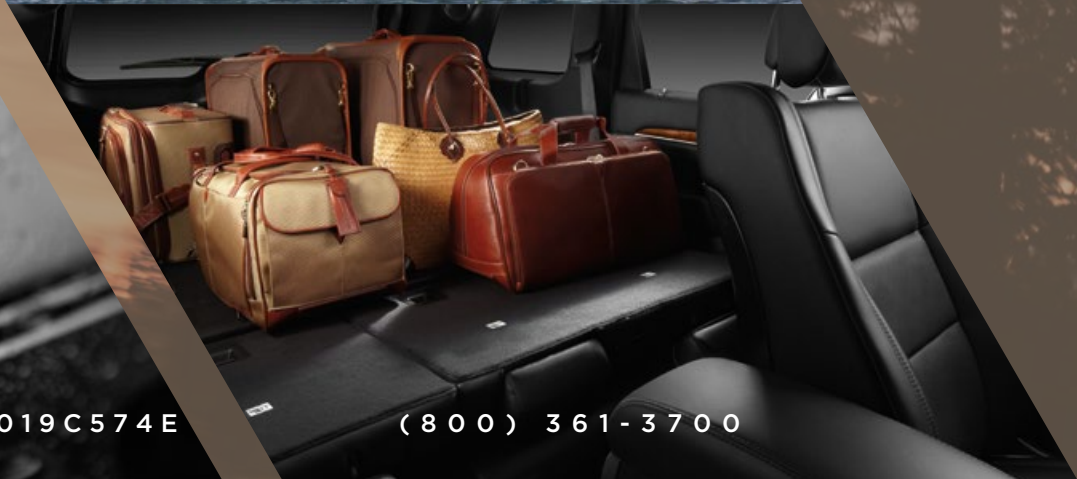
Like us on:
[facebook.com/jeepcanada](https://www.facebook.com/jeepcanada)



Follow us on:
[twitter.com/jeepcanada](https://www.twitter.com/jeepcanada)



Jeep



JEEP.CA

52019C574E

(800) 361-3700