



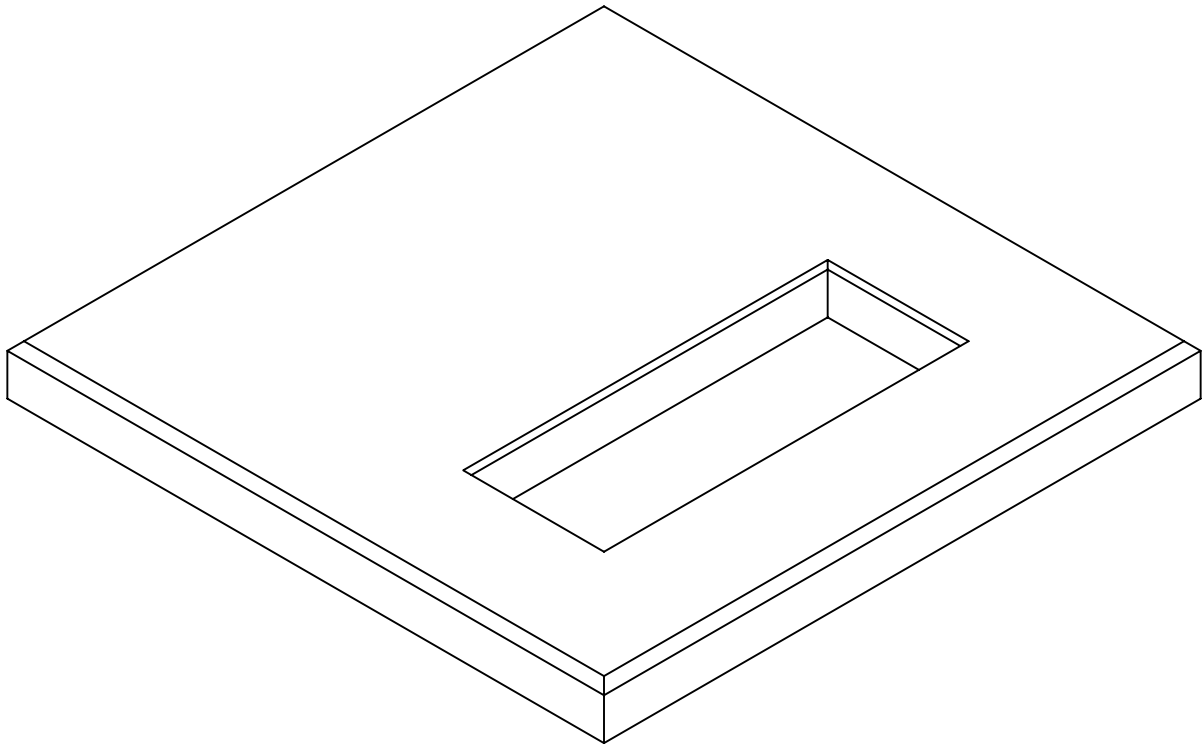
Lakelands Concrete Products, Inc.
7520 East Main St., Lima, NY 14485
Phone: 585-624-1990, Fax: 585-624-2102

Web: www.lakelandsconcrete.com
E-mail: sales@lakelandsconcrete.com

Date: 12/15/10

DWG: TPNYSEG

NYSE&G
Standard Transformer Pads
75KVA-5000KVA





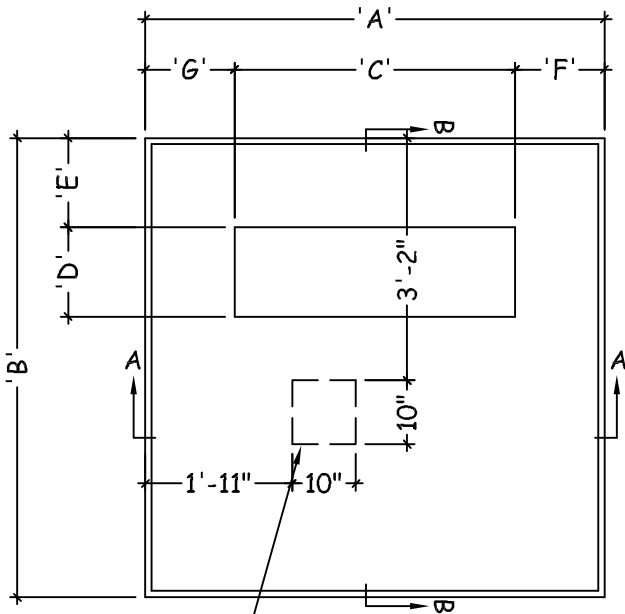
Lakelands Concrete Products, Inc.
 7520 East Main St., Lima, NY 14485
 Phone: 585-624-1990, Fax: 585-624-2102

Web: www.lakelandsconcrete.com
 E-mail: sales@lakelandsconcrete.com

Date: 12/15/10

DWG: TPNYSEG

NYSE&G
 Standard Transformer Pads
 75KVA-5000KVA



10"x10" Knockout Is In
 TPMC101 Pad Only

PLAN VIEW

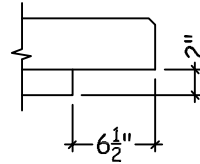
Specifications:

Design Criteria: 5000 Psi @28 Days

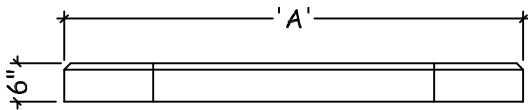
Entrained Air: 5% - 9%

Reinforcement: BAR-ASTM A615 GR60

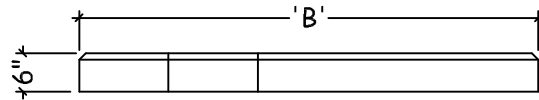
WWR-ASTM A185/A497 GR65



The TPMC101 (262-776-00)
Has 2" Recess In Bottom
RG&E Standard MC101 Cover



SECTION VIEW 'A'



SECTION VIEW 'B'

Model No.	A	B	C	D	E	F	G	Weights	NYSE&G SS#	Phase	KV	KVA
TP5050	50"	50"	24"	12"	7"	13"	13"	750#	262-803-00	1	15/35	25-167
TPMC101	72"	72"	40"	16"	12"	16"	16"	2367#	262-776-00	3	15	75-500
TP8975	89"	75"	50"	17"	14"	21"	18"	3100#	262-781-00	3	15	750-2500
TP8975	89"	75"	50"	17"	14"	21"	18"	3100#	262-781-00	3	35	75-1500
TP9696NY-A	96"	96"	60"	24"	12"	24"	12"	4300#	262-782-00	3	35	2500
TP7671	76"	71"	30"	15"	22 1/2"	23"	23"	2600#	262-790-00	1/3		250-500
TP9589	95"	89"	43"	17"	20"	26"	26"	4100#	262-791-00	3		500-1500
TP9696NY-B	96"	96"	62"	17"	20"	17"	17"	4300#	262-792-00	3		1500-2500
TP120120	120"	120"	80"	24"	20"	20"	20"	6500#	262-793-00	3		3750-5000