

IS

2020 LEXUS



Uncommon craftsmanship.

Uninhibited performance.

Unmatched technology.

Experience an exhilarating sport sedan
that doesn't just make a statement—
it leaves a legacy.



The 2020 Lexus IS





IS 300

Bold styling meets a 2.0-liter turbocharged in-line four-cylinder engine with 241 horsepower.¹ Eight-speed Sport Direct-Shift transmission with paddle shifters. Zero to 60 in 6.9 seconds.^{1,2} Rear-wheel drive.

IS 300 AWD

Full-time all-wheel drive (AWD) with a powerful 3.5-liter V6 engine that generates 260 horsepower.¹ Six-speed transmission with paddle shifters. Zero to 60 in 6.1 seconds.^{1,2}



IS 350

Exhilarating performance delivered by a powerful 3.5-liter V6 engine with 311 horsepower.¹ Eight-speed Sport Direct-Shift transmission with paddle shifters (RWD). Zero to 60 in 5.6 seconds (RWD)^{1,2} / 5.7 seconds (AWD).^{1,2} Rear-wheel drive or available all-wheel drive.



IS F SPORT MODELS

The next level of dynamic design and performance. Exclusive track-inspired details such as an F SPORT-tuned suspension, a limited-slip rear differential (IS 350 RWD), dramatic interior and exterior styling, and F SPORT front seats with enhanced bolsters are available on all IS models.

IS shown in Caviar (left), IS F SPORT shown in Redline (center), IS F SPORT shown in Atomic Silver (right)



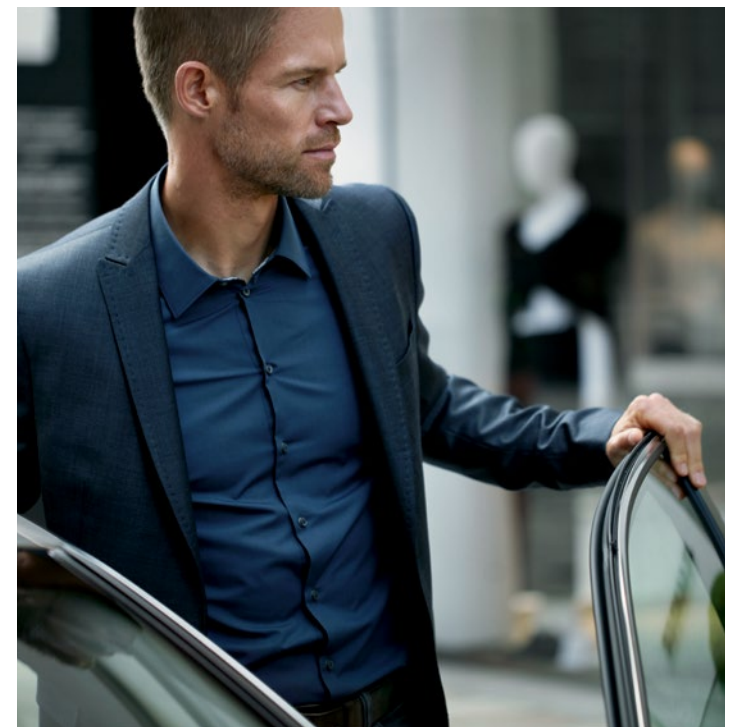
ISF SPORT shown in Redline



IS shown in Atomic Silver



IS SPORT shown in Ultra White





ISFSPORT shown with Black NuLuxe^{®3} and Dark Gray Streamline interior trim



IS F SPORT shown in Ultra White



RAZOR'S-EDGE PERFORMANCE

Experience precise handling, thrilling control and uninhibited power in the most rigorously tested IS ever.



Fanatically tested and tuned at renowned tracks across the globe, the IS offers three expressions of power and a single vision of visceral, direct performance. With advanced tuning techniques for enhanced fuel efficiency and advanced casting techniques for enhanced responsiveness, the IS delivers acceleration and adrenaline on demand.

IS F SPORT shown in Obsidian



IS shown in Atomic Silver

THREE FORMS OF POWER

IS 300 / IS 300 F SPORT

Engineered with highly advanced twin-scroll turbocharger technology and a paddle-shift transmission, the 241-horsepower¹ IS 300 provides the robust power, low-end torque and responsive performance you can feel the moment you accelerate.

IS 300 AWD / IS 300 AWD F SPORT

With an all-wheel drive system designed to adapt to changing conditions, the IS 300 AWD delivers V6 power with 260 horsepower¹ and a paddle-shift transmission. The F SPORT model also offers a more robust engine note when pushed to higher rpm.

IS 350 / IS 350 F SPORT

Engineered for peak performance, the IS 350 wields a powerful 311-horsepower¹ V6 and paddle-shift transmission. When pushed to higher rpm, the IS 350 F SPORT is filled with a throaty engine note that complements its exhilarating performance.

ALL-WHEEL DRIVE

—

Style doesn't have to take a snow day with the IS 300 AWD and IS 350 AWD. By automatically allocating engine power between the front and rear axles from 30/70 to as much as 50/50, all-wheel drive can help provide enhanced traction and control on a wide range of road surfaces and conditions.

torque split up to
50/50

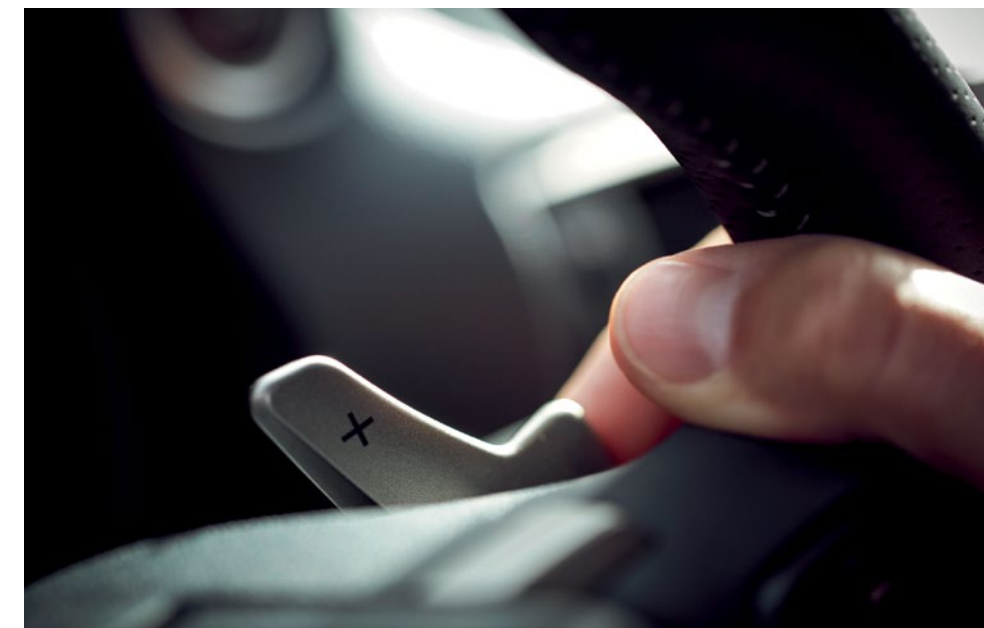


IS SPORT shown in Ultra White



F SPORT PERFORMANCE

Tuned by the same team behind the legendary LFA supercar, the IS F SPORT offers the next level of dynamic handling and exhilarating response.



The IS F SPORT is an overdose of performance, engineering and dynamic styling. Exclusive to the IS 350 F SPORT, Adaptive Variable Suspension monitors and adjusts the shock settings on each wheel, depending on the conditions. And, while cornering, the suspension is tightened for reduced body lean and even greater response. A limited-slip rear differential effectively distributes engine power to the rear wheel with the most grip to help optimize traction, handling and control in a variety of conditions.

SPORT S / SPORT S+ DRIVE MODES

Sport S mode adjusts the amount of steering response, alters the powertrain for faster gear changes and more dynamic throttle mapping, and switches the outer ring of the LFA-inspired tachometer to white on F SPORT models. Sport S+ mode on the IS 350 F SPORT goes a step further by tightening the suspension. In both modes, the transmission's shift points are automatically altered coming into and out of corners for sharper acceleration.

F SPORT STYLING

The interior of the F SPORT is a sleek and aggressive command center. Featuring enhanced bolsters and a unique foam-injected construction designed to cradle the driver during high-G turns, exclusive F SPORT seats wrap the driver from hip to shoulder. Their low position helps place the driver's hip point as close as possible to the vehicle's center of gravity

for a more dynamic driving experience. Beyond the track-inspired seating, it boasts a steering wheel trimmed in perforated leather, aluminum pedals, exclusive stitching and race-inspired instrumentation that deliver unmistakable F SPORT style.



IS F SPORT shown with Rioja Red NuLuxe^{®3} and Dark Gray Streamline interior trim



LFA-INSPIRED DIGITAL INSTRUMENTATION

Nearly identical to the digital gauges in the world-renowned LFA supercar, the instrument cluster in the IS F SPORT models features a digital display that moves in concert with a sliding bezel, expanding and retracting digital readouts when information is accessed.

EXCLUSIVE 18-INCH SPLIT-FIVE-SPOKE ALLOY WHEELS

Exclusive 18-inch alloy wheels⁴ feature a dynamic split-spoke design inherited from the LFA, and pair with high-friction brake pads⁵ designed to offer greater responsiveness and reduced fade.





With an aggressively styled front fascia, head-turning LED headlamps, distinctive taillamps with signature L-shaped illumination, and an advanced driver-centric cockpit, the 2020 IS commands the road and captivates the eye.

CUTTING- EDGE DESIGN

Every angle is crafted to create our most expressive IS yet.





EVOCATIVE *STYLING*

The 2020 IS makes its track-honed heritage known with a ground-hugging, aerodynamic exterior and assertive styling. An aggressive stance and a striking front fascia are punctuated by sculpted lines that finesse their way from the rocker panels through the rear wheel arches and culminate in the dramatic, sweeping taillamps.

The unmistakable LED headlamp design not only attracts attention but also enhances visibility. The available Adaptive Front Lighting System⁶ uses steering and speed sensors to direct the angle of low-beam illumination as the vehicle enters a curve.



INTERIOR DESIGN

Where versatile accommodations meet iconic Lexus craftsmanship.



The 2020 IS pairs high design with the highest attention to detail. Combining meticulous craftsmanship with exceptional comfort, the interior features a shift knob and steering wheel trimmed in hand-selected leather. Located where your hands naturally rest on the steering wheel, an available heating element continually monitors and adjusts the heating level to help maintain a set temperature. Further refining the driving experience, a dual-zone climate-control system features individual settings to allow the driver and front passenger to adjust their preferred temperatures.

Seating throughout the IS is as adaptable as it is striking. The low-set, 10-way power-adjustable driver's seat, including lumbar, and the eight-way power-adjustable front passenger's seat provide peak comfort, while standard 60/40-split fold-down rear seats provide remarkable versatility. Available heated and ventilated front seats also offer separate heaters and fans in the seat cushions.





Experience innovation in sharp focus. LED headlamps with Intelligent High Beams,⁸ Lexus Safety System+⁹, an available class-leading 10.3-inch multimedia display,⁷ class-exclusive⁷ Scout® GPS Link^{10,11} navigation¹² and more create a world of connectivity designed for and around the driver.

LEADING-EDGE TECHNOLOGY

With class-exclusive technology⁷ and advanced safety features, the 2020 IS has intelligence that sets it apart.



PEACE OF MIND, STANDARD

Presenting Lexus Safety System+, an integrated suite of the most advanced active safety equipment ever offered on the IS.⁹

PRE-COLLISION SYSTEM WITH PEDESTRIAN DETECTION

This system¹³ is engineered to help detect a vehicle or a pedestrian in the path of your Lexus under certain conditions. Should it detect a potential frontal collision, it's designed to automatically prepare Brake Assist¹⁴ for increased brake force and, in some cases, can even automatically brake the vehicle to a stop.

LANE DEPARTURE ALERT WITH STEERING ASSIST

This system¹⁵ utilizes a camera to monitor visible lane markings. If an inadvertent lane departure is detected at speeds above 32 mph, the system is designed to warn you so that you can steer back into the lane, and can even take slight corrective measures to help keep you within your visibly marked lane.

HIGH-SPEED DYNAMIC RADAR CRUISE CONTROL

This system¹⁶ uses radar and camera technology to help you maintain a preset speed and following distance from the vehicle ahead. If you get closer than the preset distance, the throttle is automatically reduced and the brakes may be applied. As soon as the road ahead clears, your Lexus returns to its preset speed.

INTELLIGENT HIGH BEAMS

To help provide greater visibility for you as well as other drivers, Intelligent High Beams⁸ offer added illumination to help keep you focused on the road. When the road ahead is clear, the system defaults to high-beam mode, then temporarily switches to low beams when it detects the headlamps or taillamps of vehicles ahead.



LEXUS SAFETY SYSTEM +

IS F SPORT shown in Caviar



360-DEGREE CONTROL

NAVIGATION SYSTEM WITH 10.3-INCH MULTIMEDIA DISPLAY

Largest in its class,⁷ the available 10.3-inch high-resolution split-screen multimedia display provides immediate, simultaneous access to your favorite mobile apps, audio and climate controls, and various other systems, including the voice-activated Navigation System.¹²

10.3-in

class-leading available high-resolution multimedia display

LEXUS ENFORM

Lexus Enform¹⁰ elevates connected technology and provides concierge-level convenience. From emergency assistance and a live response center agent, to the ability to start your engine remotely¹⁸ using your smartphone, smartwatch, the Lexus skill on Amazon Alexa¹⁹ built-in devices, or the Lexus action on Google Assistant-enabled²⁰ devices, our premium suite of connected technology offers peace of mind with every drive.

DRIVE MODE SELECT

Drive Mode Select enables you to make your vehicle more responsive or efficient with a simple turn of a dial. Normal mode provides the optimal balance of fuel efficiency and engine performance. ECO mode moderates the throttle response, engine power output and climate settings for increased fuel efficiency. Sport mode alters the powertrain for faster and more dynamic throttle response. In the IS 350 F SPORT, Sport S+ mode goes a step further by tightening the suspension to reduce body lean and Custom mode enables you to create a unique profile of a combination of drive mode settings.

MARK LEVINSON® PREMIUM SURROUND SOUND AUDIO SYSTEM

The available 15-speaker, 835-watt Mark Levinson^{®17} Premium Surround Sound Audio System features patented, proprietary Clari-Fi^{®17} technology that restores audio quality from compressed music, resulting in crisp, clear, dynamic sound from any source. This, combined with technology designed to create an expansive "sweet spot" of audio, envelops every passenger in three-dimensional sound that rivals the finest home audio systems.

DRIVER-CENTRIC TECHNOLOGY

From touch-based climate controls to Siri[®] Eyes Free²¹ to the available advanced Voice Command with Enhanced Bluetooth[®] technology²² and more, the IS delivers smart, seamless convenience. In addition to the center-console controller, available Remote Touch²³ allows you to easily move through logical menus of the vehicle's features, with buttons on either side for both driver and front passenger accessibility.



DELIVERY AND TECHNOLOGY SPECIALISTS

To help you get the most out of these and other features in your new Lexus, a Vehicle Delivery Specialist will walk you through nearly every setting and function you desire. And to answer questions that arise after delivery, a Vehicle Technology Specialist can offer expert guidance in person or without you ever leaving the driveway via camera-enabled apps like FaceTime.^{®24} Learn more about these services at lexus.com/specialists.

10

airbag system,²⁵
the most in its class⁷

SCOUT® GPS LINK

An intelligent alternative to available Navigation,¹² class-exclusive⁷ Scout® GPS Link^{10,11} uses a smartphone app to offer turn-by-turn directions via the Lexus Multimedia System.²³ Drivers can also access real-time traffic info, personalized commute times, automatic traffic avoidance and more.

INTUITIVE PARKING ASSIST

The available Intuitive Parking Assist²⁶ utilizes inconspicuous sensors integrated into the front and rear bumpers that are designed to detect surrounding objects. Using audible tones and an indicator on the multimedia display, the system can notify you of a detected object's location and proximity, helping with routine tasks like parallel parking.

BLIND SPOT MONITOR WITH REAR CROSS-TRAFFIC ALERT

To help you change lanes with confidence, the available Blind Spot Monitor²⁷ is designed to detect and warn you of vehicles approaching or positioned in the adjacent lanes. And for added peace of mind, Rear Cross-Traffic Alert²⁸ can help you when backing out of a parking space by notifying you of vehicles approaching from either side under certain conditions.

BACKUP CAMERA WITH DYNAMIC GRIDLINES

When you put the vehicle in reverse, the view from the backup camera²⁹ is shown on the multimedia display in full color with dynamic gridlines to assist you with parking and other maneuvers.



IS F SPORT shown with Black NuLuxe^{®3} interior trim

IS STYLES



IS 300

Standard on every IS:

- A LED headlamps, taillamps, and daytime running lights
- Power moonroof
- SmartAccess^{30,31} with push-button Start/Stop
- B Drive Mode Select
- NuLuxe^{®3}-trimmed interior
- Dual-zone climate control
- Lexus Multimedia System²³ with color display and compatible Scout[®] GPS Link^{10,11} with TurnStreamTM mode. Included through 2023.
- Voice Command with Bluetooth²² and USB³² smartphone connectivity
- Subscription-free Traffic and Weather updates via HD Radio^{TM33}
- Lexus Enform Safety Connect³⁴ and Service Connect.³⁴ Included for the first 10 years of ownership.
- Lexus Enform Remote¹⁸ with Amazon Alexa¹⁹ and Google Assistant²⁰ compatibility. Included for the first year of ownership.
- Lexus mobile app services (Lexus Enform Remote,¹⁸ Lexus Drivers and more)
- Lexus Safety System+⁹ (Pre-Collision System¹³ with Pedestrian Detection, Lane Departure Alert¹⁵ with Steering Assist, High-Speed Dynamic Radar Cruise Control¹⁶ and Intelligent High Beams⁸)
- Backup camera²⁹ with dynamic gridlines
- 10 standard airbags²⁵
- Complimentary scheduled maintenance services (please refer to the *Warranty and Services Guide* for details)



IS 300 AWD

Includes IS 300 features, plus:

- All-wheel drive
- Heated front seats



IS 350

Includes IS 300 features, plus:

- 18-in five-spoke alloy wheels with summer (RWD) or all-season (AWD) tires⁴



IS 300 F SPORT

Includes IS 300 features, and adds or replaces:

- F SPORT suspension tuning
- C Performance-inspired instrumentation with sliding bezel
- F SPORT bolstered heated and ventilated front seats
- Perforated leather-trimmed shift knob and steering wheel with F SPORT logo
- Dark Gray Streamline interior trim
- Black headliner
- D Aluminum pedals
- F SPORT exterior styling including unique front bumper, grille and rear valance
- F SPORT 18-in split-five-spoke alloy wheels with summer tires⁴



IS 300 AWD F SPORT

Includes IS 300 F SPORT features, plus:

- All-wheel drive
- F SPORT 18-in split-five-spoke alloy wheels with all-season tires⁴



IS 350 F SPORT

Includes IS 300 F SPORT features, plus:

- F SPORT-tuned Adaptive Variable Suspension with Sport S/S+ modes
- Torsen^{®35} limited-slip rear differential (RWD)
- F SPORT 18-in split-five-spoke alloy wheels with summer (RWD) or all-season (AWD) tires⁴



A



B



C



D

PACKAGES

PREMIUM PACKAGE

- A Heated and ventilated front seats
- Power tilt-and-telescopic steering column
- Rain-sensing windshield wipers
- Blind Spot Monitor²⁷ with Rear Cross-Traffic Alert²⁸
- Electrochromic (auto-dimming) heated outside mirrors with auto tilt-down in reverse
- Lexus Memory System for driver's seat, outside mirrors and steering column

NAVIGATION PACKAGE

- Navigation System¹²
- 10.3-in high-resolution split-screen multimedia display
- Remote Touch²³
- Lexus Enform App Suite¹⁰
- Lexus Enform Destination Assist.³⁶ Included for the first year of ownership.

NAVIGATION/MARK LEVINSON® PACKAGE

Includes Navigation Package, plus:

- B Mark Levinson^{®17} 15-speaker, 835-watt Premium Surround Sound Audio System
- Machined-aluminum control knobs

OPTIONS

- Premium Triple-Beam LED headlamps
- Heated and ventilated front seats
- Blind Spot Monitor²⁷ with Rear Cross-Traffic Alert²⁸
- Power rear sunshade
- Intuitive Parking Assist²⁶
- Heated steering wheel
- Adaptive Front Lighting System⁶



A

IS 300 /
IS 300 F SPORT

241

HORSEPOWER¹

IN-
LINE 4

2.0-LITER TURBO-
CHARGED ENGINE

RWD

STANDARD

8

SPEED

6.9

0-60 MPH (SEC)^{1,2}

21/30/24

CTY / HWY / CMB
EPA-ESTIMATED MPG³⁷

IS 300 AWD /
IS 300 F SPORT AWD

260

HORSEPOWER¹

V6

3.5-LITER ENGINE

AWD

STANDARD

6

SPEED

6.1

0-60 MPH (SEC)^{1,2}

19/26/21

CTY / HWY / CMB
EPA-ESTIMATED MPG³⁷

IS 350 AWD /
IS 350 F SPORT AWD

311

HORSEPOWER¹

V6

3.5-LITER ENGINE

AWD

STANDARD

6

SPEED

5.7

0-60 MPH (SEC)^{1,2}

19/26/21

CTY / HWY / CMB
EPA-ESTIMATED MPG³⁷

IS 350 /
IS 350 F SPORT

311

HORSEPOWER¹

V6

3.5-LITER ENGINE

RWD

STANDARD

8

SPEED

5.6

0-60 MPH (SEC)^{1,2}

20/28/23

CTY / HWY / CMB
EPA-ESTIMATED MPG³⁷



B

DIMENSIONS

OVERALL LENGTH 184.3 IN / WHEELBASE 110.2 IN /
WIDTH 71.3 IN (MIRRORS FOLDED) / HEIGHT 56.3 IN

WHEELS



17-in

Split-five-spoke alloy wheels⁴
STANDARD IS 300, IS 300 AWD



18-in

Mesh alloy wheels⁴
AVAILABLE IS 300, IS 300 AWD



18-in

Five-spoke alloy wheels⁴
STANDARD IS 350, IS 350 AWD
AVAILABLE IS 300, IS 300 AWD



18-in

Split-five-spoke alloy wheels⁴
STANDARD IS F SPORT



18-in

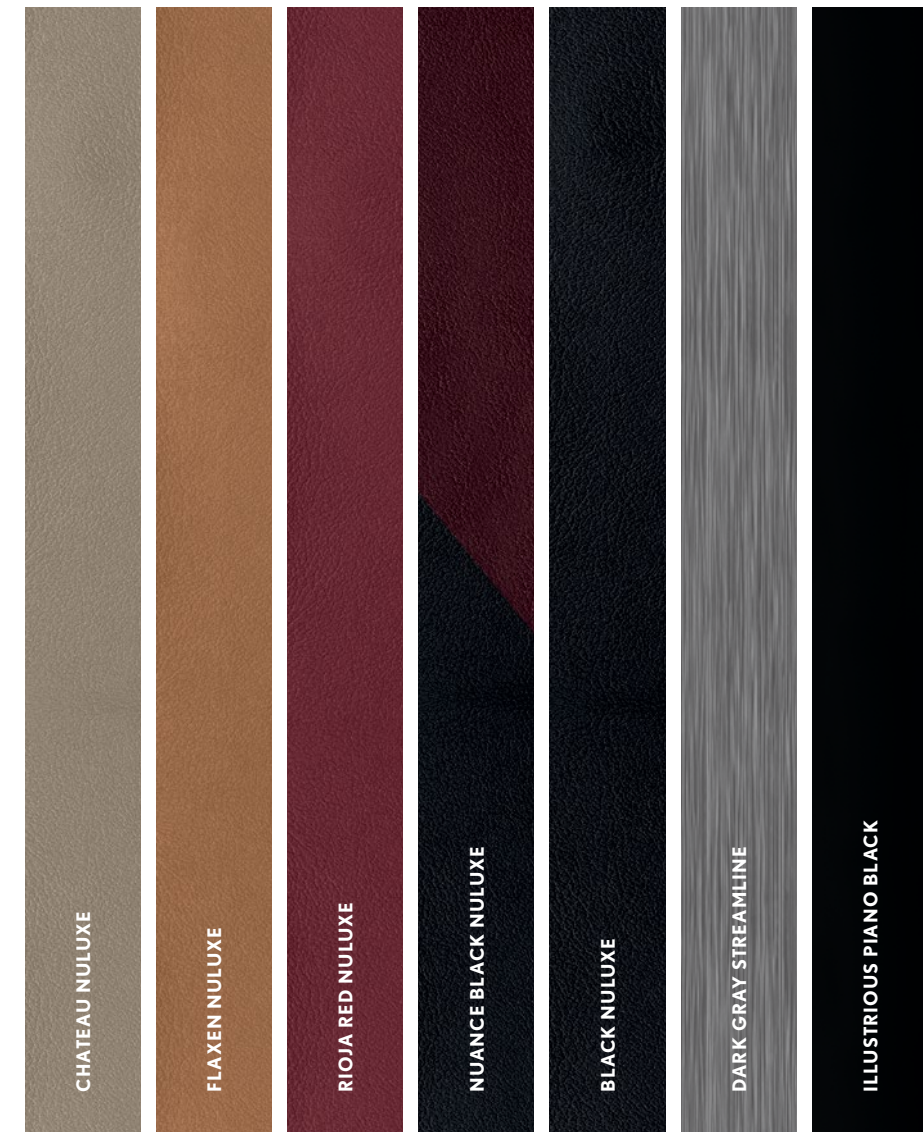
F SPORT five-spoke alloy
accessory wheels^{4,38}
AVAILABLE



IS F SPORT shown in Ultra White

COLOR, MATERIAL & FINISH

INTERIOR & TRIM

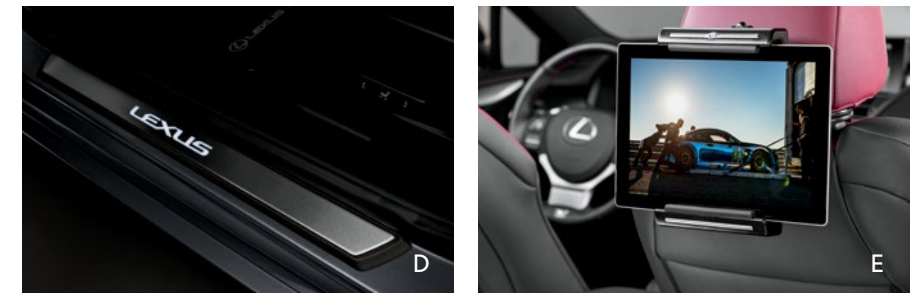


CHATEAU NULUXE ⁸³	■	●
FLAXEN NULUXE	■	●
RIOJA RED NULUXE	■	●
NUANCE BLACK NULUXE	■	●
BLACK NULUXE	■	●

IS ●
IS F SPORT ■

ACCESSORIES

The Lexus accessory line is as elegant and well-crafted as your exquisitely designed Lexus vehicle. And ours are the only Lexus accessories that are warranted for up to 48 months/50,000 miles³⁸ and honored at every Lexus dealership in the nation.³⁹ For more, please visit lexus.com/accessories.



- A All-weather floor liners⁴⁰
- All-weather floor mats⁴¹
- Alloy wheel locks
- B Body side moldings
- Cargo net
- Carpet floor mats⁴¹
- C Carpet trunk mat
- Coin holder / Ashtray cup
- Door edge film by 3M™⁴²
- Door edge guards
- Emergency assistance kit
- First aid kit
- Glass breakage sensor
- D Illuminated door sills
- Key gloves with Lexus logo
- E Lexus Universal Tablet Holder⁴³
- F Paint protection film by 3M™⁴⁴
- Rear bumper appliqué
- G Rear spoiler[†]

F SPORT ACCESSORIES

- Key gloves with F logo
- Lowering springs³⁸
- F SPORT 18-in five-spoke alloy wheels^{4,38}

DISCLOSURES

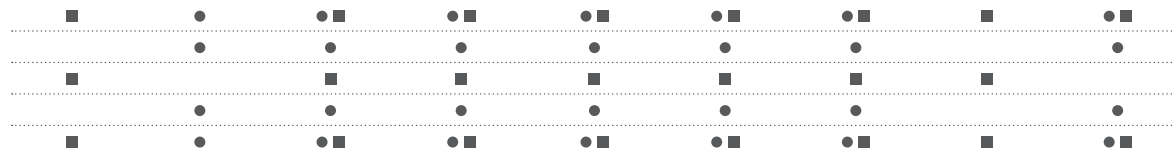
WARRANTY Four-year/50,000-mile Lexus Limited Warranty. Six-year/70,000-mile Powertrain Warranty. Six-year/unlimited-mileage Corrosion Perforation Warranty. All warranties with zero deductible. See the *IS Warranty and Services Guide* at your Lexus dealer for details.

1. Ratings achieved using the required premium unleaded gasoline with an octane rating of 91 or higher. If premium fuel is not used, performance will decrease. **2.** Performance figures are for comparison only and were obtained with prototype vehicles by professional drivers using special safety equipment and procedures. Do not attempt. **3.** NULuxe is a registered trademark of Toyota Motor Sales, U.S.A., Inc. **4.** 17- or 18-in performance tires are expected to experience greater tire wear than conventional tires. Tire life may be substantially less than mileage expectancy or 15,000 miles, depending upon driving conditions. **5.** High-friction brakes may require additional maintenance, be louder and have a shorter life than conventional brakes, depending on driving conditions. See the *Warranty and Services Guide* for more information. **6.** The Adaptive Front Lighting System helps improve night vision. Situations such as a dirty windshield, rapidly changing light conditions or hilly terrain will limit effectiveness, requiring the driver to manually turn off the system. See *Owner's Manual* for additional limitations and details. **7.** 2020 IS vs. 2019/2020 competitors. Information from manufacturers' websites as of 6/10/2019. **8.** Intelligent High Beams operate at speeds above 25 mph. Factors such as a dirty windshield, weather, lighting and terrain limit effectiveness, requiring the driver to manually operate the high beams. See *Owner's Manual* for additional limitations and details. **9.** Lexus Safety System+ effectiveness is dependent on many factors including road, weather and vehicle conditions. Drivers are responsible for their own safe driving. Always pay attention to your surroundings and drive safely. See *Owner's Manual* for additional limitations and details. **10.** Be sure to obey traffic regulations and maintain awareness of road and traffic conditions at all times. Apps/services vary by phone/carrier; functionality depends on many factors. Select apps use large amounts of data; you are responsible for charges. Apps and services subject to change at any time without notice. See lexus.com/enform for details. To learn about Lexus Enform's data collection, use, sharing and retention, please visit <https://www.lexus.com/privacyts/>. **11.** Scout GPS Link app is compatible with select vehicle models. Availability and accuracy of the information provided by Scout GPS Link is subject to change at any time without notice and is dependent upon many factors, including smartphone connectivity, capability and cellular reception. Always use safe driving practices and follow all traffic rules. Data charges may apply. Scout and Telenav are registered trademarks of Telenav, Inc. **12.** Be sure to obey traffic regulations and maintain awareness of road and traffic conditions at all times. Functionality, availability and accuracy of information provided by the system depends on many factors and service may not be available in every location. Use common sense when relying on information provided. Apps/services vary by phone/carrier. Select apps use large amounts of data; you are responsible for charges. Apps and services subject to change at any time without notice. See lexus.com for details. Services and programming subject to change. Updates may be available from your dealer at an additional cost. See *Owner's Manual* for additional limitations and details. **13.** The Pre-Collision System (PCS) with Pedestrian Detection (PD) is designed to determine if impact is imminent and help reduce impact speed and damage in certain frontal collisions involving a vehicle or a pedestrian. PCS w/PD is not a substitute for safe and attentive driving. System effectiveness depends on many factors, such as speed, size and position of pedestrian, and weather, light and road conditions. See *Owner's Manual* for additional limitations and details. **14.** Brake Assist is designed to help the driver take advantage of ABS. It is not a substitute for safe driving practices. Braking effectiveness also depends on proper vehicle maintenance, and tire and road conditions. See *Owner's Manual* for additional limitations and details. **15.** Lane Departure Alert with Steering Assist is designed to read visible lane markers under certain conditions. It provides a visual and audible alert and slight steering force when lane departure is detected. It is not a collision-avoidance system or a substitute for safe and attentive driving. Effectiveness is dependent on many factors including road, weather and vehicle conditions. See *Owner's Manual* for additional limitations and details. **16.** Dynamic Radar Cruise Control is designed to assist the driver and is not a substitute for safe and attentive driving practices. System effectiveness is dependent on many factors, including road, weather and traffic conditions. See *Owner's Manual* for additional limitations and details. **17.** Mark Levinson and Clari-Fi are registered trademarks of Harman International Industries, Inc. **18.** Use only if aware of circumstances surrounding vehicle and it is legal and safe to do so (e.g., do not remotely start engine if vehicle is in an enclosed space or vehicle is occupied by a child). Remote Connect depends on an operative telematics device, a cellular connection, GPS signal strength and other factors outside of Lexus' control, which can limit system functionality and availability. Service may vary by vehicle and region. Registration and app download required. Terms and conditions of subscription service agreement apply. Data charges may apply. Services subject to change at any time without notice. See usage precautions and service limitations in *Owner's Manual* and lexus.com/enform for additional details. To learn about Lexus Enform's data collection, use, sharing and retention, please visit <https://www.lexus.com/privacyts/>. The Remote Connect trial period is at no extra cost and begins on the original date of purchase or lease of a new vehicle. After the trial period expires, enrollment in a paid subscription is required to access the service. Terms and conditions apply. **19.** Amazon, Alexa and all related logos are trademarks of Amazon.com, Inc. or its affiliates. Certain functions require adequate signal strength and/or smartphone technology/connectivity. Not all Amazon Alexa functionality is available for in-vehicle use. See applicable app for details. Download of the Lexus+Alexa app is required to begin in-vehicle use of Alexa. Data charges may apply for certain functions. Apps and services subject to change at any time without notice. To learn more, go to <https://www.lexus.com/enform>. To learn more about Lexus Enform's data collection, use, sharing and retention, please visit <https://www.lexus.com/privacyts/>. **20.** Google is a trademark of Google LLC. Always drive safely and obey traffic laws. Functionality depends on many factors outside of Lexus' control. Actions and services subject to change at any time without notice. To learn more, go to lexus.com/enform. To learn more about Lexus' data collection, use, sharing and retention, please visit <https://www.lexus.com/privacyts/>. **21.** Always focus on the road while driving. Siri is available on select iPhone/iPad models and requires Internet access. Siri is not available in all languages or all areas and features vary by area. Some Siri functionality and commands are not accessible in the vehicle. See apple.com and phone carrier for details. Data charges may apply. Siri is a registered trademark of Apple Inc. **22.** The Bluetooth word mark and logos are registered trademarks owned by Bluetooth SIG, Inc. and any use of such marks by Lexus is not license. A compatible Bluetooth-enabled phone must first be paired. Phone performance depends on software, coverage and carrier. **23.** Be sure to obey traffic regulations and maintain awareness of road and traffic conditions at all times. **24.** FaceTime is a registered trademark of Apple Inc. All rights reserved. Always drive safely and obey traffic laws. Apps, prices and services vary by phone carrier and are subject to change at any time without notice. Subject to smartphone connectivity and capability. Data charges may apply. **25.** Airbag systems are Supplemental Restraint Systems and are designed to inflate only under certain conditions and in certain types of severe collisions. To decrease the risk of injury from an inflating airbag, always wear seatbelts and sit upright in the middle of the seat as far back as possible. Do not put objects in front of an airbag or around the seatback. Do not use a rearward-facing child seat in any front passenger seat. See *Owner's Manual* for additional limitations and details. **26.** Intuitive Parking Assist (IPA) is designed to assist drivers in avoiding potential collisions at speeds of 9 mph or less. Certain vehicle and environmental factors, including an object's speed, shape, size and composition, may affect the system's effectiveness. Always look around outside the vehicle and use mirrors to confirm clearance. See *Owner's Manual* for additional limitations and details. **27.** Do not rely exclusively on the Blind Spot Monitor. Always look over your shoulder and use your turn signal. There are limitations to the function, detection and range of the monitor. See *Owner's Manual* for additional limitations and details. **28.** Do not rely exclusively on the Rear Cross-Traffic Alert system. Always look over your shoulder and use your mirrors to confirm rear clearance. There are limitations to the function, detection and range of the system. See *Owner's Manual* for additional limitations and details. **29.** The backup camera does not provide a comprehensive view. Always look over shoulder and use outside mirrors. See *Owner's Manual* for additional limitations and details. **30.** The SmartAccess system may interfere with some pacemakers or cardiac defibrillators. If you have one of these medical devices, please talk to your doctor to see if you should deactivate this system. **31.** The engine immobilizer is a state-of-the-art anti-theft system that is initiated when you insert your key into the ignition switch or bring a SmartAccess fob into the vehicle. The engine will only start if the code in the transponder chip inside the key/fob matches the code in the vehicle's immobilizer. The transponder chip is embedded in the key/fob and can be costly to replace. If you lose a key or fob, your Lexus dealer can help or you can go to www.aloa.org to find a qualified locksmith in your area who can perform high-security key service. **32.** May not be compatible with all mobile phones, MP3/WMA players and like models. **33.** Be sure to obey traffic regulations and maintain awareness of road and traffic conditions at all times. HD Radio Technology manufactured under license from iBiquity Digital Corporation U.S. and Foreign Patents. HD Radio and the HD, HD Radio, and "Arc" logos are proprietary trademarks of iBiquity Digital Corp. **34.** The Safety and Service Connect trial periods are at no extra cost and both begin on the original date of purchase or lease of a new vehicle. After the trial periods expire, enrollment in paid subscription is required to access the services. Safety and Service Connect services depend on an operative telematics device, a cellular connection, navigation map data and GPS signal strength and other factors outside of Lexus' control, all of which can limit system functionality or availability, including access to response center or emergency support. Stolen vehicle police report required to use Stolen Vehicle Locator. Services subject to change at any time without notice. Terms and conditions of subscription service agreement apply. Service may vary by vehicle and region. See usage precautions and service limitations in *Owner's Manual*. See lexus.com/enform for details. To learn about Lexus Enform's data collection, use, sharing and retention, please visit <https://www.lexus.com/privacyts/>. **35.** Torsen® is a registered trademark of JTEKT Corporation. **36.** Destination Assist depends on an operative telematics device, a cellular connection, navigation map data, GPS signal strength and other factors outside of Lexus' control, which can limit system functionality or availability. Use common sense when relying on this information. Service may vary by vehicle and region. Registration required. Services subject to change at any time without notice. Terms and conditions of subscription services agreement apply. See *Owner's Manual* and lexus.com/enform for additional limitations and details. To learn about Lexus Enform's data collection, use, sharing and retention, please visit <https://www.lexus.com/privacyts/>. The Destination Assist trial period is at no extra cost and begins on the original date of purchase or lease of a new vehicle. After the trial period expires, enrollment in a paid subscription is required to access the service. **37.** 2020 EPA estimates. Actual mileage will vary. **38.** All Accessories (Genuine Lexus and F SPORT) installed at the time of retail vehicle delivery are warranted for the same time as the new-vehicle warranty (48 months/50,000 miles). Accessories purchased after retail vehicle delivery and installed by an authorized Lexus dealer are warranted for 12 months from date of purchase or installation, regardless of mileage, or the remainder of any applicable new-vehicle limited warranty, whichever is greater. Accessories purchased over the counter are covered for 12 months from the date of purchase. For all Accessories, refer to your accessory limited warranty or documentation that accompanies accessory purchase for coverage and conditions. **39.** Warranty honored at all Lexus dealerships nationwide excluding Hawaii. **40.** This floor liner was designed specifically for use in your model and model year vehicle and SHOULD NOT be used in any other vehicle. To avoid potential interference with pedal operation, each liner must be secured with its fasteners. Do not install a floor liner on top of an existing floor liner. **41.** This floor mat was designed specifically for use in your model and model year vehicle and SHOULD NOT be used in any other vehicle. To avoid potential interference with pedal operation, each mat must be secured with its fasteners. Do not install a floor mat on top of an existing floor mat. **42.** Lexus Genuine Accessory Warranty will only apply when the installation is performed by a trained Lexus-approved installer. See Lexus dealer for details. **43.** Lexus Universal Tablet Holder is intended for passengers only. Drivers should always be sure to obey traffic regulations and maintain awareness of the road and traffic conditions at all times. Use of aftermarket accessories may pose an increased risk of injury to occupants in the vehicle in the event of an accident. Tablet, phone, music and video player sold separately. **44.** Genuine Lexus Paint Protection Film by 3M™ is designed for specific sections of the hood and front fenders. Depending on the model, it may also be applied to select portions of the front bumper for an additional charge. Lexus Genuine Accessory Warranty will only apply when the installation is performed by a trained Lexus-approved installer. See Lexus dealer for details.

Lexus strives to build vehicles to match customer interest, and thus they typically are built with popular options and option packages. Not all options/packages are available separately, and some may not be available in all regions of the country. See lexus.com for information about options/packages commonly available in your area. If you would prefer a vehicle without any or with different options, contact your dealer to check for current availability or the possibility of placing a special order. Specifications, features, equipment, technical data, performance figures, options, and color and trim are based upon information available at time of printing, are subject to change without notice, and are for mainland U.S.A. vehicles only. Vehicles shown may be prototypes and/or shown with options. Actual models may vary. Colors depicted may vary based on multiple factors, including ambient lighting and the format in which they are being viewed (e.g., computer, mobile device, or print). See your Lexus dealer for details. Lexus reminds you to wear seatbelts, secure children in rear seat, obey all traffic laws and drive responsibly. For more information, call 800-USA-LEXUS (872-5398) or visit lexus.com. To learn more about your financing options, contact your Lexus dealer or call Lexus Financial Services at 800-874-7050.

[†]Previous model year shown

EXTERIOR



WHEN EVERY DETAIL,
EVERY MOMENT
AND EVERY EMOTION
IS CRAFTED BY LEXUS,
IT LEADS TO THIS.



*Limited availability. Production ends February 2020.
†Additional charge
For configuration details, visit lexus.com/ISbuild