

1977 Ford Mustang II
Sweet handling.



Ford Mustang II. Makes driving fun again.

The Mustang II Story.

When America needed a better idea in driving fun, Ford put Mustang II on wheels. The sweet handling Mustang II, since inception, has been the best-selling car in its class.

Your driving fun is also practical. The standard 2.3 liter engine and manual transmission are EPA-rated at 33 mpg highway, 23 mpg city (34 mpg and 22 mpg in Calif.)*. Even with automatic transmission, EPA tests were 29 mpg highway, 21 mpg city (26 mpg and 19 mpg in Calif.)*.

Choose the sporty 2-Door Hardtop (below), or the racy 3-Door 2+2 (facing page). The dramatic Cobra II, spirited Mach 1, 2+2 with Appearance Decor Group and 2+2 with Rallye Appearance Package are on pages 4 and 5. Mustang II with exciting

new Ghia Sports Group, and the elegant Ghia, appear on pages 6 and 7.

Each model seats four in comfort. Each has rack and pinion steering, a computer-tuned suspension with staggered shocks for balance and agility in traffic.

(A) 2-Door Hardtop. (below) Our lowest-priced Mustang II in optional Golden Glow glamour paint (Code 6V). Bright moldings you see here and on the 2+2 (at right) are standard. So are front disc brakes, 4-speed manual transmission, and more.

(B) Optional New Flip-Up Open Air Roof. Bronze tinted glass opens for ventilation, or may be removed. A sunshade is included.

(C) Windshield wiper/washer controls are conveniently mounted on turn signal in all Mustang II's . . . another better idea.

(D) 3-Door 2+2 offers sporty getaway versatility. The rear liftgate opens wide, rear seats fold down for 22.8 cubic feet of carrying space. Shown in optional Medium Emerald Glow (Code 7T). Standard on 2+2's are Blackout grille, styled steel wheels (optional trim rings shown), bias belted raised white letter (or WSW) tires, brushed aluminum instrument panel appliques and Sport steering wheel. A no-cost, color-keyed front spoiler is available.

Primary motivation on 2+2 and Hardtop is a 2.3 liter 2V 4-cylinder overhead cam engine, mated with a 4-speed manual transmission and sporty floor shift. More power is available from a 2.8 liter 2V V-6† (2.8 VV in Calif., standard on Mach 1) and 302 VV V-8 (302 VV in Calif.).

(E) Sport steering wheel (right) brushed aluminum panel appliques are standard on the 2+2. Full sports instrumentation (tachometer, ammeter-fuel-temperature gauges) is standard on all Mustangs.

(F) Blackout grille, standard on 2+2, and no-cost, front spoiler add styling excitement.

Cover: 2+2, in Bright Red (Code 2R), with new T-Roof Convertible option for the flair of a top-down car. Wrapover band, available on all 2+2's except Cobra II, has Black vinyl insert. Removable, twin smoke-glass roof panels easily snap in place with hand clamps.

*Mileage ratings are EPA estimates. Actual mileage you get may vary depending on how and where you drive, car condition and optional equipment. †N.A. on high altitude area cars.

Note: See Notable Standard Features, measurements and color code reference on back cover. Some items shown are optional, such as dual sport mirrors, rocker panel moldings and WSW radial tires.



(A) Mustang II Hardtop



(B)



(C)



(D) Mustang II 3-Door 2+2

Ford Mustang II. Go as sporty as you like.



(A) Mustang II Cobra II



(B) Mustang II Mach 1



(C) 2+2 with Rallye Appearance Package.



(D) 2+2 with Appearance Decor Group.

(A) Cobra II. Runaway sales success.

(left) Combine flair with fun by choosing the new Cobra II Package option. Cobra II is available on the 4-passenger 2+2's shown in Polar White (Code 9D), with brilliant Red, Blue or Green racing stripes, or in Black (Code 1C), with Gold stripes. You get these exterior features: front/rear deck spoilers □ Black louvered backlite and flipper quarter windows □ tricolor racing stripes on spoilers, hood, hood scoop, roof, rear deck, lower bodyside panels □ Cobra II emblem on Blackout grille with bright surround molding □ Black dual sport mirrors □ Cobra II bodyside identification □ styled steel wheels with trim rings □ raised white letter radials □ Black windshield wiper arms and windshield/backlite moldings. The 2.3 liter engine and 4-speed manual

transmission with floor shift are standard. More spirited action can be yours with 2.8 liter V-6† (2.8 VV in Calif.) or 302 CID 2V V-8 (302 VV in Calif.). SelectShift automatic transmission is available. Inside Cobra II you get 2+2 standards like: brushed aluminum instrument panel applique □ tachometer, ammeter, temperature gauges □ Sport steering wheel □ low-back bucket seats, all-vinyl trim □ color-keyed carpeting □ fold-down rear seat, carpeted cargo area, and more. Plus: brushed aluminum door trim inserts, Cobra II nameplates.

(B) Exhilarating Mach 1. (above) You see it here in Orange (Code 8G) with: Black lower bodyside/back panel/tape treatment □ dual sport mirrors □ bright lower bodyside molding □ Mach 1 insignia □ styled steel wheels with trim rings □ raised white letter

radials. Under the racy lines churns a 2.8 liter 2V V-6† with 4-speed manual transmission and floor-mounted shift. All standard.

(C) 2+2 with Rallye Appearance Package. Tasteful, upbeat optional styling—in Black (Code 1C shown), or Polar White. Exterior excitements are: dual Gold-color bodyside/hood stripes □ Black moldings, door handles, lock □ Black antenna (when Ford radio ordered) □ Black wiper arms □ Black front spoiler □ Black grille and Gold-color surround molding □ Black dual sport mirrors □ dual Gold accents on bumper rub strips □ taillamp Gold surround accents □ Argent-styled steel wheels with trim rings. Striking interior items feature: choice of Black or White vinyl seats with Gold ribbed velour Tourainé Cloth inserts, Gold welting □ Gold-color door panel

moldings. Carpeting and other components, color-keyed to Black or White exterior, add an impressive designer touch.

(D) 2+2 with Appearance Decor Group. (above) Now you can add spicy Tu-Tone paint ideas. The Appearance Group option shown in Polar White with Bright Red (Codes 9D, 2R), is also available in Polar White with Bright Aqua Glow (Code 7H), and Creme with Golden Glow (Codes 6P, 6V). This option group includes dual accent tape stripes □ trim rings □ choice of all-vinyl or cloth/vinyl seat trim □ brushed aluminum instrument panel appliques. Wheel lip moldings are deleted.

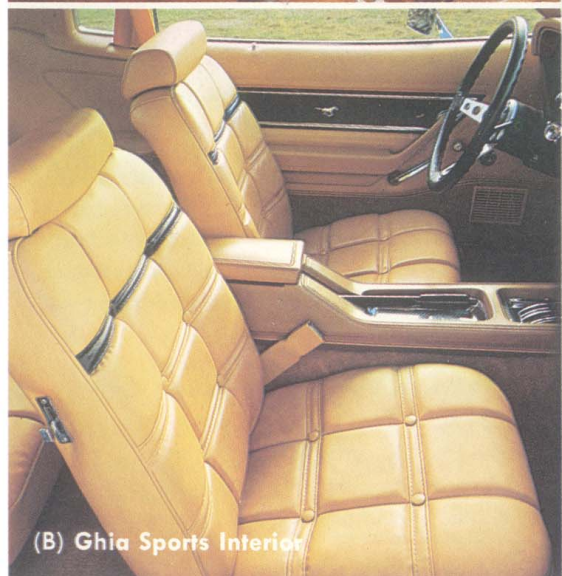
†N.A. on high altitude area cars.

Note: See Notable Standard Features list, measurements and color code reference on back cover. Some items shown are optional, such as dual sport mirrors, White painted lacy spoke aluminum wheels, forged aluminum wheels, and front/rear bumper guards.

Ford Mustang II Ghia. Special brands of elegance.



(A) Mustang II Ghia with Ghia Sports Group



(B) Ghia Sports Interior



(C) Mustang II Ghia

(A) Mustang II with the new Ghia Sports Group. (left) Looking and feeling good under way is what driving fun's about. So Ford designers created the Ghia Sports Group Option, which combines better ideas in luxury and sport distinction.

Tasteful new exterior features include: Black or Tan finish, Tan (Code 8H) shown half-vinyl roof in Black Odense grain or Chamois lugano grain, Black shown Chamois or Black vinyl insert bodyside moldings Black or Chamois full-length, bodyside accent stripes Blackout grille luggage rack with Black or Chamois leather hold-down straps, brightly buckled cast aluminum wheels with Chamois-painted spokes.

(B) Ghia Sports Group Option Interior. (above) Inside elegance, with the accent on

sportiness, is the story here. And it is handsomely expressed with accoutrements like: Black engine-turned instrument panel/console tray/door trim appliques leather-wrapped Sport steering wheel Black shift lever knob (on 4-speed manual), bright shift lever knob (on SelectShift) Ghia Chamois seat trim with Black horizontal upper straps center console Black parking brake handle. Mustang II Ghia with Sports Group Option. For an extra measure of driving excitement.

(C) Mustang II Ghia. Head of the class.

Ghia luxuriously combines tasteful elegance with a beautiful driving experience. It's more than Ghia's sweet handling and nimble road manners. There's a reassuring, solid feel of the road. Smooth riding comfort. Consider choosing your Ghia distinctively

finished in one of the new Mustang II glamour paint options like Bright Aqua Glow (Code 7H), smartly topped with a White half-vinyl roof (as shown on the Ghia above). The vinyl roof, opera windows, pinstripes and more, of course, are standard.

Inside, luxury beautifully complements the rich-looking exterior. Low-back bucket seats, contoured for comfort, are handsomely tailored in a choice of deluxe cloth and vinyl, or all-vinyl trim. See pages 8 and 9. There are Luxury Decor Trim panels, deluxe color-keyed belts and other fine appointments. See all the Ghia standard features listed on the back cover.

The 2.3 liter 2V 4-cylinder overhead cam engine and fully synchronized 4-speed manual transmission make Ghia luxury practical. And

to personalize your Ghia further, Mustang II offers a tempting variety of choices: AM/FM stereo radio power steering SelectAire conditioner SelectShift automatic transmission, and more, listed on pages 10, 11. Visit your Ford Dealer soon, and get your hands on a Mustang II Ghia.

Note: See Notable Standard Features list, measurements and color code reference on the back cover. Some items shown are optional, such as SelectShift automatic transmission, Sunroof, dual sport mirrors, front/rear bumper guards, AM/FM stereo radio, and WSW tires.

Ford Mustang II interiors.



(A)

Uncommon luxury in a sporty car.

You'll be pleasantly surprised when you enter Mustang II. Everything's as sporty and exciting as you'd expect Mustang II to be. And all of it is more luxurious than you'd expect a sporty car to be.

There's ample room for four. Contoured front bucket seats are thickly cushioned, and they adjust individually to accommodate driving, riding needs. Deep comfort for the long drive.

The instrument cluster is a sport buff's delight. With reachable controls, including a tachometer—plus ammeter, fuel and temperature gauges to help you keep an eagle eye on performance. Even the floor shift is fingertip handy.

And there's a wide selection of richly tailored fabrics available. Most can be ordered in Bright Red, Aqua, Black, Chamois, White or Creme.

(A) Media Velour Trim Option. (left) A sumptuous Ghia option, designed to spoil you. And you can order this plush Media Velour Cloth on the Ghia model only. Aqua shown (Code CK), Chamois or Creme also available.

(B) Luxury Interior Group. (right) Attractive Stirling plaid cloth and vinyl trim in Creme (Code EV), is available as an option on all Mustang II models. Note large door armrest, deluxe door trim, deluxe color-keyed belts, thick cut-pile carpeting. See page 10 for additional features.

(C) Cobra II Interior. All-vinyl trim here in Bright Red (Code HD). Sporty door trim with brushed aluminum inserts and Cobra II nameplates are among special appointments.

(D) Rallye Appearance Package Trim. Superb, optional styling for a sporty car. Offered in Black or White vinyl with Gold ribbed velour Touraine Cloth inserts (Code FA shown). Gold bolster welts, Gold-color door panel moldings, plus color-keyed carpeting and other appointments, add a classic touch.

(E) Cloth/Vinyl Upholstery. Sporty, checked Ashton cloth, shown in Chamois (Code JT), also comes in Bright Red, Aqua and Black, and is a standard choice. The low-back seats have adjustable, full-width head restraints. Zigzag spring/steel wire web construction, and contour-molded foam cushioning provide center softness with firm side and lateral support. Low-friction slides and roller bearings make the built-in five-inch adjustment easy.

(F) All-Vinyl Trim. Durable, easy-care all-vinyl covering is standard. It appears here in Black (Code AA), and is offered in Bright Red, Chamois, White, Creme or Aqua.

(G) Instrument Panel includes standard features normally available only as optional equipment: tachometer, odometer—plus ammeter, fuel and temperature gauges □ warning lights for oil pressure, belts and brakes □ pecan woodtone applique for Hardtop models □ large, lockable glove box. And when you add the windshield wiper/washer controls conveniently mounted on the turn signal, you can see how Mustang II really maximizes driving convenience.

Note: See Notable Standard Features list on back cover. Other items like SelectShift automatic transmission, SelectAire Conditioner, remote control mirrors, Sunroof, center console, AM/FM stereo radio and deluxe color-keyed belts are optional.

Trim and Seat Chart

(All Bucket Seats)

Model	S	S	O	O		
Hardtop	S	S	O	O		
2+2	S	S	O	O		
Mach 1		S	O	O		
Ghia			S	O	O	
Ghia Sports Group			S			
Cobra II		S	O	O		
Rallye Appearance Pkg.						S
S—Standard						
O—Optional						
Ashton Cloth/Vinyl						
All-Vinyl						
All-Vinyl (Decor. level)						
Stirring Plaid Cloth/Vinyl						
Media Velour Cloth/Vinyl						
Touraine Cloth/Vinyl						



(B)



(C)



(D)



(E)

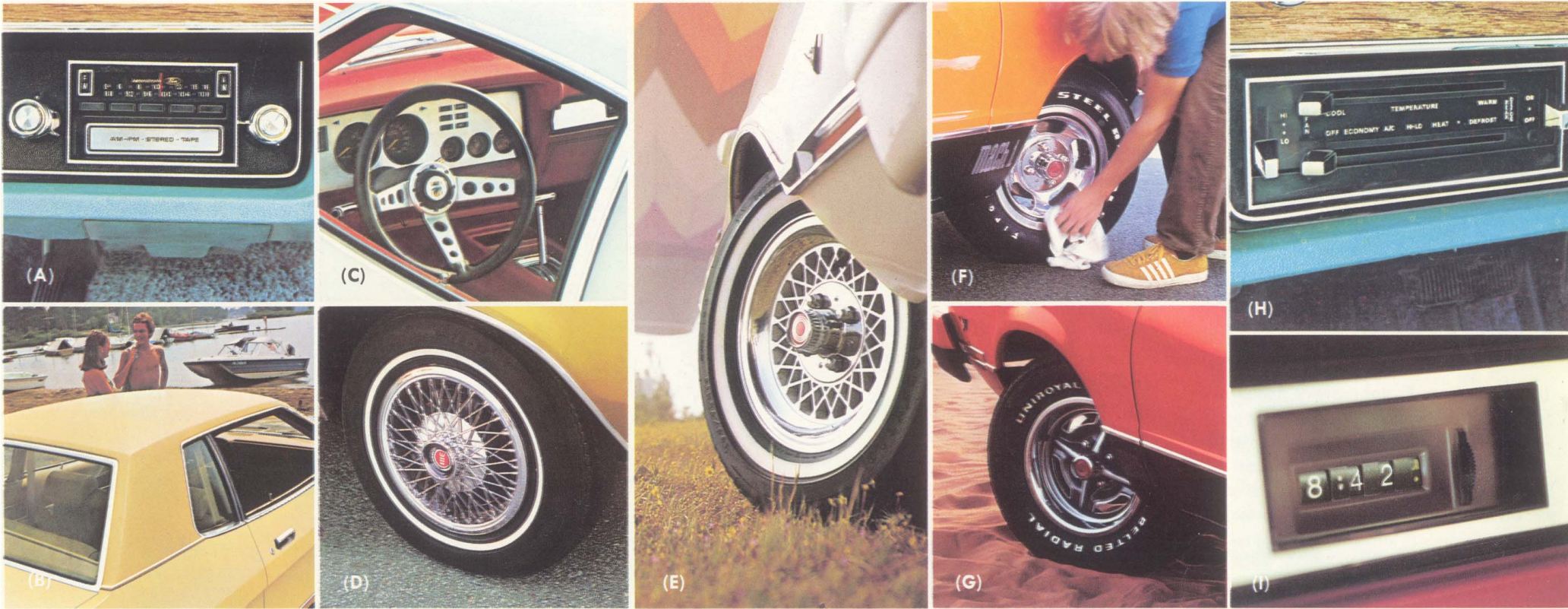


(F)



(G)

Personalize with Ford Mustang II options.



Audio

Ford Radios, built under exacting quality control standards, are designed, tested and engineered precisely for Ford cars. Each radio has a 100% solid state chassis for carefree operation, long life and high fidelity sound. Each comes with a fixed-length stainless steel whip antenna for maximum reception and resistance to damage. For more details, ask your Ford Dealer for a copy of "Dimensions in Automotive Sound." Ford quality radio choices:

- AM, with Pushbutton Tuning. Single speaker in instrument panel.
- AM with Stereo Tape Player. Includes speaker in each side door.
- AM/FM Monaural. Low-cost system. Single speaker in instrument panel.
- AM/FM Stereo. Includes speaker in each side door.
- (A)** AM/FM Stereo with Tape Player. 8-track, automatic or manual tape channel indexing, plus 10 settings (5 AM, 5 FM).

Includes speaker in each side door.

Appearance and Protection

- Exterior Accent Group (Hardtop). Racy dress-up touches include: dual sport mirrors, full-length pinstripes, wide color-keyed vinyl insert bodyside moldings, styled steel wheels with trim rings, WSW tires.
- Color-Keyed Deluxe Belts. Pages 8, 9.
- Front and Rear Bumper Guards. Include rubber inserts, add protection. Pages 3, 6.
- Cobra II Package (2+2). Exterior and interior features with sporty flair. Illustrated and detailed on pages 4, 5.
- Appearance Decor Group (2+2, Hardtop). Contemporary styling touches. Shown and described on page 5.
- Luxury Interior Group. Includes: choice of vinyl, or cloth and vinyl seat trim with large door armrests, deluxe door trim, deluxe color-keyed belts, 14-oz. cut-pile carpeting, large parking brake boot and rear ashtray. Pages 8, 9.
- Rallye Appearance Package. Tasteful, upbeat styling. Shown and detailed on page 5.
- Color-Keyed Vinyl Insert Bodyside Moldings. Guard against dents, paint chipping from careless parkers. Standard on Ghia, and with Exterior Accent Group. If ordered on Mach 1, it includes Black vinyl insert. Pages 6, 7.
- Rocker Panel Moldings (all models). Dressy touch.
- Metallic Glow Paint. Lustrous, high-metallic flake content, beautifully available in Bright Aqua, Medium Emerald and Gold. Pages 2, 7.
- Pinstripes (standard on Ghia). Dual accent stripes on hood, front fenders, doors, lower back panel. Pages 6, 7.
- Protection Group. Includes bright door edge guards (except Mach 1 and Cobra II), front floor mats, license plate frames (rear only when front license bracket not ordered).

- T-Roof Convertible. 2+2 models. Adds the sun, fun and flair of a convertible. Twin smoke-glass roof panels are easily removed, stored in dual compartment vinyl case provided. Shown on cover.

- (B)** Full-Vinyl Roof (Hardtop). Adds distinction. Odense grain in Bright Red, Creme, Aqua, Black, White, Silver or Brown.
- Ghia Sports Group. Rare blend of exterior and interior luxury and sports flair. Shown and detailed on pages 6, 7.
- (C)** Leather-Wrapped Sport Steering Wheel. (Standard on Ghia Sports Group). Comfortable to hold, wheel provides sure grip. Pages 7, 9.
- (D)** Wire Wheel Covers. Add a dapper, elegant touch.
- (E)** Lacy Spoke Aluminum Wheels. A handsome addition.
- White Lacy Spoke Aluminum Wheels. Includes White-painted wheel with dual Red rings. For dazzling good looks. Page 4.



(J)



(L)



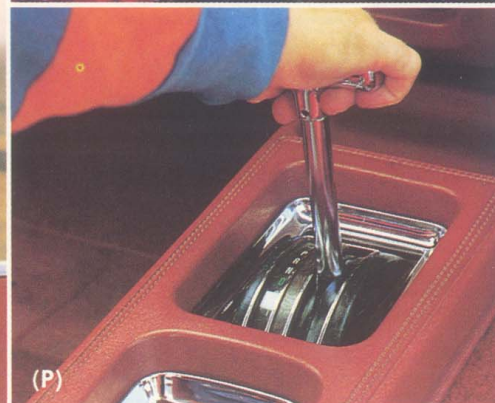
(N)



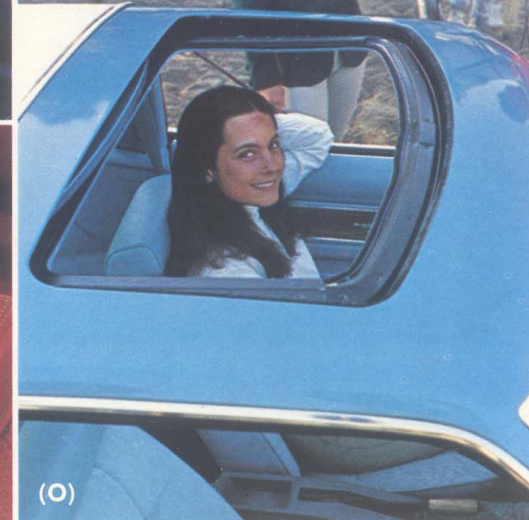
(K)



(M)



(P)



(O)

- (F)** Forged Aluminum Wheels. Sporty, distinctive dress-up. Page 5.
- (G)** Styled Steel Wheels with Trim Rings. Standard on Mach 1. Wheels standard on 2+2, Trim Rings optional. Tasteful embellishment.
- Trim Rings. Dress-up for styled steel wheels. Standard on Mach 1.
- Tires. There's a wide selection of sizes and styles available in BSW, raised letter wide-oval, or WSW steel-belted radial ply. Also in BSW bias-ply, or bias-belted RWL or WSW. Ask your Ford Dealer for complete details.

Comfort and Convenience

- (H)** SelectAire Conditioner. Cools, dehumidifies, warms for climate you prefer all seasons. Tinted glass recommended.
- Power Front Disc Brakes. Easier stops.
- (I)** Digital Quartz Crystal Clock. Quartz-controlled accuracy.
- (J)** Console. Handy, fingertip storage.

- Convenience Group. Includes interval windshield wipers, passenger visor vanity mirror, day/night inside mirror. 3-Door includes pivoting rear quarter windows.
- (K)** Electric Rear Window Defroster. Melts light ice and light snow quickly.
- Tinted Glass all around. Cuts down glare, heat from sun.
- Light Group. Lights—under hood, in glove box, ashtray, trunk, under instrument panel; third door courtesy light switch, map light, door ajar warning light, headlights "on" warning light and buzzer.
- (L)** Deck Lid Luggage Rack (Hardtop). Functional, great-looking. Standard, with straps, when Ghia Sports Group ordered.
- (M)** Dual Sport Mirrors. Standard on Mach 1, with Rallye Appearance Package and Rallye Package, Exterior Accent Group, Cobra II Package.
- Flip-Up Open Air Roof (Hardtops). Page 2.

- Fold-Down Rear Seat. Standard on 2+2. Extra carrying space.
- (N)** 4-Way Manual Driver's Seat. Up or down, forward or back adjustment for maximum driving comfort.
- Power Rack and Pinion Steering. Gives you almost effortless handling.
- (O)** Manual-Operated Sunroof. (Hardtops).
- Media Velour Cloth Trim. Sumptuous comfort (Ghia), page 8, and one of many selections offered. See full trim selection on pages 8, 9.

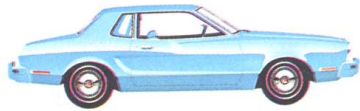
Performance and Economy

- Heavy-Duty Battery. 53-amp. capacity for cold starts, severe driving conditions.
- Deluxe Equipment Group. Includes power brakes, radial tires, AM/FM monaural radio, 4-way manual driver's seat.
- Rallye Package. Includes extra-cooling, heavy-duty springs/adjustable shock absorbers, rear stabilizer bar, dual sport mirrors.

- Engines. 2.8 liter 2V V-6† (standard on Mach 1), 302 CID 2V V-8 (302 CID VV in Calif.). Engines have DuraSpark Ignition which extends plug life, allows for less maintenance (no points or condenser required).
- Sports Performance Package†. Includes 302 CID 2V V-8 (2.8 liter 2V V-6 Calif.), heavy-duty 4-speed manual transmission (except in Calif.), power steering, power brakes, radial tires.
- 4-Speed Manual Heavy-Duty Transmission. N.A. with Calif. or High Altitude Emission Equipment.
- (P)** SelectShift Automatic Transmission. Can be shifted manually if you wish. T-bar shift lever, floor-mounted, adds a sporty look and feel.

†N.A. on high altitude area cars.

Models



Mustang II Hardtop, Bright Aqua Glow (7H)



Mustang II Ghia, Dark Brown Metallic (5Q)
White vinyl half-roof



Mustang II Cobra II, Black (1C) Gold Accent



Mustang II 3-Door 2+2, Creme (6P)



Mustang II Mach 1, Orange (8G)

Notable Standard Features

FUNCTIONAL

- 2.3 liter 2V 4-cyl. engine (Hardtop, Ghia, 2+2)
DuraSpark Ignition
- 4-speed fully synchronized manual transmission,
floor-mounted shift
- Rack and pinion steering
- Turn signal mounted windshield wiper/washer controls
- Front disc brakes
- Color-keyed urethane bumpers
- Tachometer and fuel/ammeter/temperature gauges
- Hand-operated parking brake with warning light
- Antitheft Door Lock Plungers
- Fold-down rear seats/liftgate (2+2, Mach 1)
- Dual sport mirrors (Mach 1)
- BSW steel-belted radial ply tires (Ghia), BSW
bias ply tires (Hardtop), bias belted RWL or WSW
tires (2+2), raised white letter wide-oval steel-
belted radials (Mach 1, Cobra II)
- Ford Motor Company Lifeguard Design Safety Features

APPEARANCE AND COMFORT

- Low-back bucket seats with all-vinyl trim:
choice of cloth/vinyl or all-vinyl (Ghia)
- Integral door armrests
- Cut-pile carpeting
- Pecan woodtone appliques (Hardtop), brushed
aluminum appliques (Cobra II, Mustang II with
Appearance Decor Group)
- Sport steering wheel (2+2, Mach 1)
- Grille with Black-painted vertical bars, Argent
horizontal bars (Hardtops), Blackout grille (2+2, Mach 1)
- Bright windshield, rear window, drip, belt and
center pillar moldings (except Mach 1)
- Full wheel covers (Hardtop)
- Styled steel wheels (2+2)

Ghia has all above with these additions:

- Color-keyed deluxe belts

- Luxury all-vinyl seat trim
- Luxury Decor door trim panels
- Deluxe parking brake boot with rear ashtray
- Half-vinyl roof
- Opera windows
- Pinstripes
- Color-keyed vinyl insert bodyside moldings
- Ghia ornamentation
- Deluxe wheel covers

Mach 1 has most of above with these differences:

- 2.8 liter 2V V-6†
- Black lower bodyside/back panel/paint/tape
treatment
- Bright lower bodyside molding
- Styled steel wheels with trim rings
- Mach 1 identification

†N.A. on high altitude area cars.

Measurements

	Wheelbase	Length	Height	Width	Tread Front/Rear	Trunk Space	Fuel Capacity	Curb Weight#	Passenger Capacity
HARDTOPS	96.2"	175.0"	50.3"	70.2"	55.6" 55.8"	6.7 cu. ft.	13 gal.**	2,709 lb.	4
3-DOORS	96.2"	175.0"	50.0"	70.2"	55.6" 55.8"	22.8 cu. ft.*	13 gal.**	2,760 lb.	4##

*Cargo volume index, rear seats down.

**16.5 gal. with 302 V-8.

2.3 liter engine with SelectShift automatic transmission.

Seats 2 with rear seats down.

Notes

CORROSION PROTECTION. Ford takes steps to see that your new car is engineered and built to high quality standards. And in order to help keep your car looking new, we incorporate the use of galvanized steel, vinyl sealers, aluminized wax in critical areas, liberal use of precoated steel and enamel as a finishing coat.

REDUCED SCHEDULED MAINTENANCE. Scheduled maintenance has been reduced substantially on 1977 Ford Mustang II's. For example, average estimated costs through 50,000 miles of normal driving on a Mustang II

with 2.3 liter engine and automatic transmission have been reduced 31% or \$81 less, including parts and labor, compared to a 1976 Mustang II—and 61% or \$283 less compared to a 1974 Mustang II. This is based on Ford's Labor Time Standards, a \$13.50 hourly labor rate and manufacturer's suggested retail parts prices effective August 31, 1976.

COLOR AND TRIM CODES. Car colors and trims are coded, example: Orange (Code 8G). Your Ford Dealer will be pleased to show you color samples of paint and trim materials.

OPTION AVAILABILITY. Some features presented are optional at extra cost. Some options are required in combination with other options. Availability of some models and features described may be subject to a slight delay. Ask your Ford Dealer for the latest information on options, prices and availability.

PRODUCT CHANGES. Ford Division reserves the right to change specifications any time without incurring obligations.

FORD When America needs
a better idea,
Ford puts it on wheels.

FORD MUSTANG II

FORD DIVISION

