

2002 *SILHOUETTE*<sup>®</sup>



 Oldsmobile



With Silhouette's vast array of comfort,  
convenience and entertainment features, your journey may well  
become as enjoyable as your destination.

**Smart car buyers have been dedicated Oldsmobile customers for years.**

Oldsmobile has always been a leader in the automotive industry, gaining the confidence of its owners by delivering quality vehicles and service. Now that confidence gets even stronger. Every new 2002 Oldsmobile comes with The GM Commitment—a 5 year/60,000 mile GM Protection Plan\* and continued availability of service and parts.

\*Take delivery by 10/01/02. General Motors Protection Plan Major Guard coverage for 5 years/60,000 miles (whichever comes first) effective from the date of delivery and 0 miles. Excludes normal maintenance. Some restrictions apply. See dealer for complete Major Guard details. In Florida, coverage is provided under Oldsmobile 60 month/60,000 mile limited warranty. See Florida dealer for complete limited warranty details.



5 | safety

10 | ambiance

21 | theater

27 | performance

30 | summary

32 | features & specifications



*Silhouette Premiere in Black Onyx. Shown with available equipment.*





# p r o t e c t i o n

## OnStar

Standard on all models, the OnStar® service is designed to enhance your security while on the road. In the U.S. and Canada, wherever a cellular connection can be made, OnStar can pinpoint your location and automatically alert an OnStar Advisor in case of an emergency. For more information, call 1-800-ONSTAR-7.



### Visibility

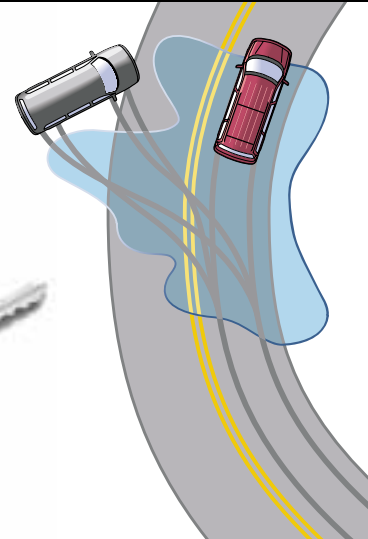
With Silhouette's excellent all-around visibility, it's harder to be surprised by surrounding traffic. With its low cowl height, large outside rearview mirrors and 180° rear wiper sweep, you've got a better view of the road ahead and the road behind.

### Foglamps/Daytime running lamps

Visibility works both ways. You need to see and be seen. To help you see better in foggy conditions, you've got standard foglamps. And to make you more visible to oncoming traffic, all models also feature daytime running lamps.

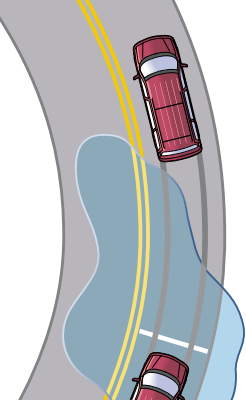
### Remote keyless entry

The remote keyless entry system will let you open the available power sliding doors at the touch of a button. It also activates the programmable power door locks, arms the standard theft-deterrent system and, in an emergency, a press of the panic button will sound the horn and flash the parking lamps.



\*One-year OnStar safety and security contract is standard. Call 1-800-ONSTAR-7 for system limitations and details.

\*\*Always use safety belts and proper child restraints, even with air bags. Children are safer when properly secured in a rear seat. See the Owner's Manual for more safety information. See inside back cover for A Note on Child Safety.



### Traction control system

For improved stability on wet or slippery roads, the full-function traction control system (available on GL, standard on GLS and Premiere) reduces engine power and/or applies braking to the wheel(s) that is slipping to help maintain stability and control.

### LATCH system

Standard on all Silhouettes, this new system provides for the secure attachment of compatible child seats. It consists of separate lower anchors and a top tether anchor.

### Side-impact air bags\*\*

All Silhouette models feature a side air bag for both the driver and front passenger. Stored in the side bolsters of the seats, the side air bags are designed to reduce the risk of injury in moderate to severe side impacts.



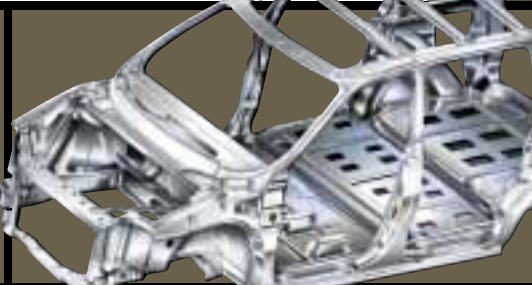
### Rear parking aid

The rear parking aid (available on GL and GLS, standard on Premiere) gives you audio and visual warning when approaching various obstacles. With an effective range of up to 5 feet, it works while the vehicle is in reverse at speeds under 3 mph.



### Side door beams

Each door features a sturdy steel beam. They're designed to reduce the risk of intrusion into the passenger compartment and dissipate energy in shallow angle side impacts to help enhance overall safety.



### Rigid body structure

Silhouette's computer-designed unibody construction provides a wealth of benefits. It minimizes squeaks and rattles, and enhances suspension precision for better handling and response. It is also designed with front and rear crumple zones to help absorb impact energy in a collision.

### 4-wheel antilock brakes (ABS)

As an aid to safety, Silhouette features a standard 4-wheel antilock braking system. Under maximum braking effort, the system modulates brake line pressure to help prevent wheel lockup, helping the driver to retain steering control and steer clear of an obstacle.

### Battery rundown protection

If you walk away with an interior light on, Silhouette won't leave you stranded with a depleted battery. The battery-rundown protection system will automatically turn off the lights after 10 minutes.





## a m b i a n c e

Silhouette's environment provides each passenger with a finely orchestrated space that's filled with personal touches to make the longest journey more comfortable. With its variety of audio systems, available entertainment system and features for listening in privacy, you'll find yourself inventing reasons to take the family for a drive.



# c o m f o r t

## Dual lighted visor vanity mirrors

For your convenience, all Silhouette models feature dual lighted visor vanity mirrors so you'll always look your best.



## Driver Information Center

Located in the overhead console, the Driver Information Center (available on GL, standard on GLS and Premiere) features an outside temperature display, a compass and a trip computer to help you determine mileage range to your next fuel stop. The console also features storage for small items you'll need on your travels.

## Universal garage door opener

Available on GL and standard on GLS and Premiere, the built-in universal garage door opener can store three different frequencies to activate most automatic garage doors or gates. You'll never need to carry a separate remote control unit.



## Air filter

The standard air filter is designed to help block out dust and pollen particles to help keep you comfortable. You can install a replacement filter in minutes.





### Tri-zone climate control system

The air conditioning system on GLS and Premiere models features a front dual-zone system that allows the front passenger to select a warmer (or cooler) setting for personal comfort. Rear climate controls (available on GL, standard on GLS and Premiere) let those in the rear adjust the temperature and fan speed independent of the main climate system.

### 8-way power front seats/Heated seats

Standard 8-way power driver's and front passenger's seats can be quickly and precisely adjusted. Heated front seats (standard on Premiere, available on GLS) will take the chill out of a cold winter morning.



### Steering wheel touch controls

No need to reach over to the console to change radio stations or adjust the volume. The steering wheel touch controls for the audio system (standard on GLS and Premiere) let you do both with no wasted motion.

### Radio/CD player/6-disc CD changer

Standard on GL is an AM/FM stereo radio with CD player. The standard GLS and Premiere audio system features an AM/FM stereo radio, single CD player and a cassette player. Available on GLS and Premiere models is an AM/FM stereo radio with in-dash 6-disc CD changer (shown above).

### Rear audio controls

With the rear audio controls (standard on GLS and Premiere, available on GL), rear occupants can tune into a separate audio source for the ultimate in personalization. While rear-seat passengers can listen to the radio, a CD or a cassette (if equipped) on standard headsets, those in the front can listen to an alternate audio source.



*Silhouette Premiere in Mocha Two-Tone leather trim.*





### Seat-back tabletops

How's this for clever design? The second-row and available third-row captain's chairs fold flat to provide you with a tabletop surface. Recesses in the seat back can hold drinks, small toys or other small items.

s e a t i n g

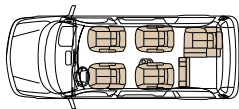


### Stowable bench/Rear cargo convenience center

Because you never know from one day to the next what your cargo needs might be, Silhouette GLS and Premiere models feature a standard third-row bench seat that folds down and out of the way to give you a long, spacious load floor. The seating system was specifically designed to make folding and unfolding a quick and easy one-person job. To organize your items, just flip up the rear panel, and you've got compartments and hooks for a variety of cargo-carrying options.

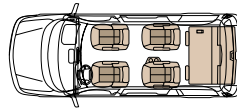
### Third-row captain's chairs

Available on GLS and Premiere are second- and third-row captain's chairs, so that each passenger can have the comfort of individualized seating.



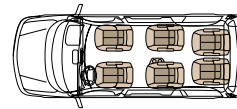
Standard on GL

Second-row captain's chairs and third-row 50/50 split-folding removable bench.



Standard on GLS and Premiere

Second-row captain's chairs and third-row stowable bench (shown stowed).



Available on GLS and Premiere

Standard second- and available third-row captain's chairs. Seat backs fold flat.

## Dual sliding side doors

The standard dual sliding side doors make it easy to move cargo and people in and out. The power-activated passenger-side door is standard on GLS and Premiere and available on GL. For added convenience, a power-sliding driver-side door is available on GLS models and standard on Premiere models.



## Keyless entry for sliding doors

For added convenience, the keyless entry system is available on the driver-side door(s) at the touch



## Built-in air inflator kit

The built-in air inflator makes quick work of bicycle tires, air mattresses or other inflatables. This item and a 12-volt power outlet are part of the touring suspension, standard on all models.



## Armrest storage bins

Every passenger can bring along items like a camera, a personal CD player or paperback books, thanks to the convenient armrest storage bins, which are standard on all Silhouette models.



s t o r a g e



## Power outlets

Two standard power outlets will let your passenger(s) use take-along electronic devices like laptop computers, cell phones and even video games.



### Cupholders

Cupholders for all passengers are conveniently located throughout the cabin to keep everyone refreshed. Front-seat cupholders slide out when needed and out of the way when not in use.



### Storage bin

The storage bin, located in the center console, will hold CDs, change, a cell phone or small essentials you need while away from home. (Not available on Premiere.)

### Smoker's package

A cigarette lighter can be specified for one of the two 12-volt power outlets.

A removable ashtray is included.

### Convenience net

Located between the two front seats, the standard removable convenience mesh net will hold small items, keeping them handy while on the move.

### Liftgate with storage

Getting cargo in and out won't become its own chore, thanks to the wide door opening, low lift height of the cargo bed and the dual gas-charged struts that are tucked away and reduce the effort required to lift the gate.



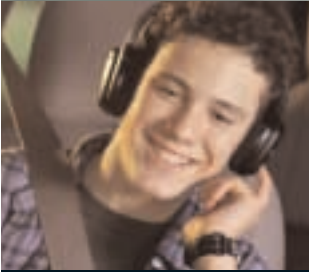
*Silhouette GLS in Sand. Shown with available equipment.*



*Silhouette Premiere in Ruby.*



# p r e m i e r e



## Wireless headphones

The Premiere entertainment system includes four standard wireless headphones to give the viewer easy movement while enjoying a favorite film or video. The volume levels are individually adjustable right on the headphones.



## Auxiliary inputs

Auxiliary inputs allow for easy hook-up of video game systems and camcorder.

## Remote control

While the DVD player may be in the front, the remote will operate the DVD unit from the rear seats.

The player features a handy on-screen programming feature.



## Audio options

This system handles three separate audio sources simultaneously. Front occupants can listen to one audio source, such as a CD or the radio, while rear occupants can listen to an alternate audio source or watch a DVD in privacy by use of the wireless headphones.

## Premiere

The future is here. Take the show on the road with the Premiere's new standard DVD player that will provide passengers with crystal-clear pictures and exceptional audio quality.



## Color monitor

The Liquid Crystal Display (LCD) color monitor provides sharp, glare-free viewing for all rear-seat passengers. When not in use, it folds completely out of the way.

## Second-row reading lamps

If second-row passengers prefer reading, the second-row reading lamps provide ample light just where it's needed. The light is designed to prevent distraction to the driver.



*Silhouette Premiere in Mocha Two-Tone leather trim interior. Vehicle is shown in parked position.*



*Silhouette Premiere in Silver Mist. Shown with available equipment.*



*Silhouette GLS in Ruby. Shown with available equipment.*



p e r f o r m a n c e

Silhouette's refined performance and distinctly car-like ride make it a pleasure to drive, even if you don't need all the passenger room and first-class comfort and convenience features. It's among the few minivans that can satisfy the desire for a driver-oriented vehicle that's as entertaining to drive as it is to ride in.

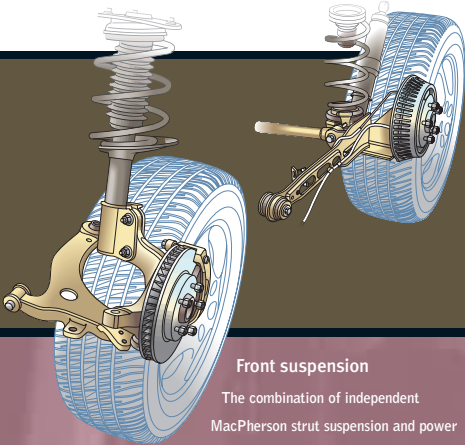


## Touring suspension

The touring suspension gives Silhouette added refinement and ride quality. Features include automatic leveling to enhance stability, gas-pressurized shocks to smooth the ride, stabilizer bars for greater control and a larger tire to improve grip. It also includes the on-board air inflator kit.

## Rear suspension

The rear suspension can handle a full load of people and cargo while still maintaining its composure and surefootedness on curvy roads.



### Front suspension

The combination of independent MacPherson strut suspension and power rack-and-pinion steering produces a smooth, confident ride and crisp responsiveness to steering.

## Versatrak All-Wheel Drive System (Available on GLS and Premiere)

It's nice to know that Silhouette uses fuel-economic front-wheel drive when driving in normal everyday conditions. But it automatically shifts into all-wheel drive for more traction when road conditions change for the worse. You get the best of both worlds, without even touching a button!

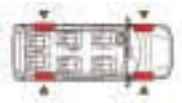
On a good road surface, Versatrak drives the front wheels only. This mode will be selected for economy in most daily driving.



When the road conditions change, Versatrak is ready. If one wheel hits an unexpected puddle, generating side-to-side slippage, the Versatrak system detects which wheels have the most traction and sends power to those wheels to help stabilize the vehicle.



When all four wheels are on a slick surface, all-wheel drive is automatically engaged to help maximize the available traction. It stays in that mode until the front wheels have regained traction.



## 3400 SFI V6/Towing

The 3400 SFI V6 engine produces robust 185hp at 5200 rpm and 210 lb-ft of torque at 4000 rpm. More importantly, 90% of peak torque is available from 1800 rpm all the way to 4000 rpm for excellent response. The available towing package is rated at 3500 lbs.\*

## Trip odometers

Two standard trip odometers let you keep track of two separate journeys.

## Low maintenance

Silhouette features long-life engine coolant and transmission fluid, 100,000-mile\*\* spark plugs, a maintenance-free battery and a stainless steel exhaust.

t o u r i n g

\*Maximum trailering weight ratings are calculated assuming a properly equipped base vehicle plus driver. See your dealer for details.

\*\*Maintenance needs vary with different uses and driving conditions. See the Owner's Manual for more information.



*Silhouette GLS in Ruby. Shown with available equipment and owner-installed trailer hitch.*

## STANDARD FEATURES

### SAFETY AND SECURITY

- One-year OnStar<sup>®</sup> safety and security contract
- Safety-cage construction
- Dual frontal and front-seat side-impact air bags\*\*
- 3-point front and rear outboard safety belts with front pretensioners, plus rear center lap belt
- Rear shoulder-belt height adjusters
- Rear outboard shoulder-belt comfort guides
- 4-wheel antilock brakes
- Brake/transmission shift interlock
- Multi-function alarm and lighting system
- Automatic programmable power door locks with lockout prevention
- Sliding-door child-security locks
- Daytime running lamps
- Halogen headlamps with automatic control
- Foglamps
- Foldaway heated power outside mirrors
- Front side and electric rear window and outside mirror defoggers
- Pulse front wipers
- Rear window wiper/washer
- Battery-rundown protection
- Rear center high-mounted stoplamp
- LATCH system for child restraints

### COMFORT AND CONVENIENCE

- Air conditioning
- Cabin air filter
- TILT-Wheel adjustable steering column
- Cruise control
- Power front windows and third-row quarter vent windows with driver-side auto-down feature
- Analog instrument cluster with low coolant and oil level indicators, plus dual retroactive-reset trip odometers
- Front-seat and rear cargo-area convenience nets
- Overhead console
- Storage: locking glove box, console bin (except Premiere), rear cargo area bins and cupholders for all seating positions
- Lighting: overhead console with map lights, rear dome/cargo lamp, dome lamp override switch, second-row reading lamps and third-row roof rail reading lamps
- Dual power outlets and auxiliary rear power outlet
- Retained accessory power
- Acoustics Package
- Dual lighted visor vanity mirrors
- Remote-control keyless entry system
- Warning chimes for safety belts, headlamps on, key in ignition and turn signal on

### SEATING AND TRIM

- Reclining contour front bucket seats with folding armrest
- Second-row folding captain's chairs
- Front- and second-row passenger-assist grips
- Rear cargo-area coat hooks
- Map pockets in front and side sliding doors and front seat backs
- Carpeted floormats

### EXTERIOR

- Rooftop luggage carrier
- Solar-treated windshield
- Deep tinted glass for rear-side, rear-quarter and tailgate windows
- Concealed front wipers
- Body-color side moldings
- Front and rear splash guards
- Exterior-mounted antenna
- Dual sliding doors

### POWERTRAIN/ CHASSIS

- 3400 SFI V6 engine
- Electronic 4-speed automatic transmission with overdrive
- Front-wheel drive
- Independent front MacPherson strut/rear twist axle and coil spring suspension
- Reduced effort power rack-and-pinion steering
- Maintenance-free battery
- Stainless steel exhaust
- Touring suspension with automatic leveling, touring tires and air inflator kit

## MODEL-SPECIFIC FEATURES

### GL MODEL

**Available**

- Full-function traction control system
- Rear parking aid (requires auxiliary rear-seat audio/climate controls and power-sliding passenger-side door)

### GL MODEL

**Standard**

- Front-passenger under-seat storage drawer
- AM/FM stereo radio with CD player, seek/scan tuning, coaxial speaker system and clock

**Available**

- Rear Comfort Package: Includes auxiliary rear-seat audio/climate controls
- Convenience Package: Includes Rear Comfort Package, Driver Information Center and Universal garage door opener
- Security Package: Includes Convenience Package, power-sliding passenger-side door and rear parking aid
- Driver Information Center, compass and overhead console outside temperature display
- Universal garage door opener (requires Driver Information Center)
- AM/FM stereo radio with CD and cassette players, seek/scan tuning, coaxial speaker system and clock
- Smoker's Package

### GL MODEL

**Standard**

- Third-row 50/50 split-folding bench seat
- Cloth-trimmed seating areas
- 8-way power driver's seat
- 2-way manually adjustable passenger's seat

### GL MODEL

**Standard**

- 15-inch bolt-on wheels
- P215/70R15 all-season radial touring tires

**Available**

- Power-sliding passenger-side door
- 16-inch aluminum wheels with Touring suspension
- Gold Package

### GL MODEL

**Available**

- Towing Package
- Engine block heater

### GLS MODEL

**Standard**

- Full-function traction control system
- Rear parking aid

**Available**

- Versatrak all-wheel drive system

### GLS MODEL

**Standard**

- Tri-zone climate control system
- Auxiliary rear-seat audio/climate controls
- Driver Information Center, compass and overhead console outside temperature display
- Universal garage door opener
- AM/FM stereo radio with CD and cassette players, seek/scan tuning, coaxial speaker system and clock
- Steering wheel audio touch controls

**Available**

- AM/FM stereo radio with seek/scan tuning, in-dash 6-disc CD player, auto-tone control, coaxial speaker system and clock
- Smoker's Package

### GLS MODEL

**Standard**

- Third-row 50/50 split-folding bench seat
- Leather-trimmed seating areas and steering wheel
- 8-way power front seats with driver's side memory
- Faux woodgrain interior accents

**Available**

- Third-row captain's chairs
- Heated front seats
- Third-row stowable bench seat with rear cargo convenience center

### GLS MODEL

**Standard**

- Power-sliding passenger-side door
- 16-inch aluminum wheels
- P225/60R16 radial touring tires

**Available**

- Power-sliding driver-side door
- 16-inch chrome wheels
- Gold Package

### GLS MODEL

**Available**

- Towing Package
- Engine block heater

### PREMIERE MODEL

**Standard**

- Full-function traction control system
- Rear parking aid

**Available**

- Versatrak all-wheel drive system

### PREMIERE MODEL

**Standard**

- Tri-zone climate control system
- Auxiliary rear-seat audio/climate controls
- Driver Information Center, compass and overhead console outside temperature display
- Universal garage door opener
- AM/FM stereo radio with CD and cassette players, seek/scan tuning, coaxial speaker system and clock
- Steering wheel audio touch controls
- Premiere On-Board Entertainment System: DVD player with fold-down overhead color monitor for rear passengers, input jacks for video games or camcorder, 4 pairs of wireless head-phones and rear-seat audio/visual controls

**Available**

- AM/FM stereo radio with seek/scan tuning, in-dash 6-disc CD player, auto-tone control, coaxial speaker system and clock
- Smoker's Package

### PREMIERE MODEL

**Standard**

- Third-row stowable bench seat with rear cargo convenience center
- Leather-trimmed seating areas and steering wheel
- 8-way power front seats with driver's side memory
- Heated front seats
- Faux woodgrain interior accents

**Available**

- Third-row captain's chairs
- Third-row 50/50 split-folding bench seat

### PREMIERE MODEL

**Standard**

- Power-sliding passenger-side door
- Power-sliding driver-side door
- 16-inch aluminum wheels
- P225/60R16 radial touring tires

**Available**

- 16-inch chrome wheels
- Gold Package

### PREMIERE MODEL

**Available**

- Towing Package
- Engine block heater

\*Call 1-800-ONSTAR-7 or visit [www.OnStar.com](http://www.OnStar.com) for system limitations and details. \*\*Always use safety belts and proper child restraints, even with air bags. Children are safer when properly secured in a rear seat. See the Owner's Manual for more safety information. See inside back cover for A Note on Child Safety.

## SPECIFICATIONS

### POWERTRAIN

Engine displacement	3.4 liters (207 cu in)
Horsepower	185 @ 5200 rpm
Torque (lb-ft)	210 @ 4000 rpm
Fuel injection	Sequential port
Transmission	Electronic 4-speed overdrive automatic
EPA estimated fuel economy	19 city/26 highway

### INTERIOR DIMENSIONS

Headroom, front/middle/rear (in)	39.9/39.3/38.9
Legroom, front/middle/rear (in)	39.9/39.0/36.7
Shoulder room, front/middle/rear (in)	59.8/61.9/59.6
First-row walk-through (in)	8.3

### CARGO AREA DIMENSIONS

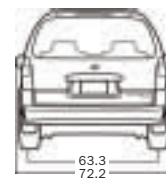
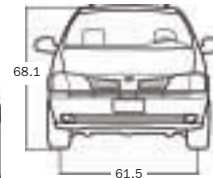
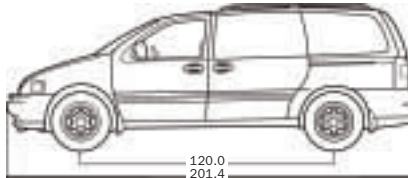
Maximum cargo volume (cu ft)	141.9
Cargo volume behind rear seat (cu ft)	24.2
Cargo length at floor (in)	100.0
Cargo width between wheel wells (in)	48.3
Rear opening width at beltline (in)	50.5
Rear opening height (in)	40.7

### CAPACITIES

Passengers	7 (6 with available captain's chairs)
Fuel (gal)	25.0
Towing, standard/Towing Package (lb)	2000/3500*
Rooftop luggage carrier (lb)**	150

### EXTERIOR DIMENSIONS

Wheelbase (in)	120.0
Length (in)	201.4
Width (in)	72.2
Height (in)	68.1
Curb weight (lb)	3948
Tread width, front/rear (in)	61.5/63.3
Turning circle (ft)	39.7



15" bolt-on wheel  
(Standard on GL)



16" aluminum wheel  
(Standard on GLS and Premiere,  
available on GL)



16" chrome wheel  
(Available on GLS and Premiere)



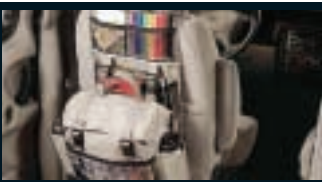
16" aluminum wheel  
(Standard on models with  
Versatrak all-wheel drive)

## ACCESSORIES



### Rooftop bike rack

There's no need to dismantle the bikes when you're transporting. The rack will handle two of them so you're ready to ride when you get there.



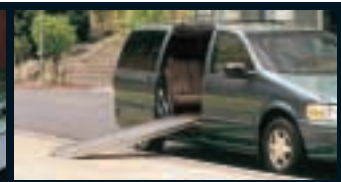
### Backpack

The handy nylon and mesh seat backpack has plenty of pockets to securely stow essentials and keep them handy for easy access.



### Cargo carrier

This is like having an additional cargo compartment. The lockable hard carrier attaches to the roof rack and keeps items safe and secure.

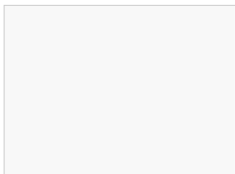


### GM's mobility program

Persons with disabilities can request financial assistance. For details call 1-800-323-9935 (TTY users: 1-800-833-9935).

\*Requires Towing Package rated at 3500 lb capacity. Package includes heavy-duty radiator, engine oil cooler, transmission cooler and 5-wire electrical harness. Maximum trailer weight ratings are calculated assuming a properly equipped base vehicle plus driver. See your dealer for details.  
\*\*See Owner's Manual for details.

## EXTERIOR/INTERIOR COLOR COMBINATIONS



### ARCTIC WHITE

Gray, Beige or Mocha Two-Tone



### STERLING

Gray



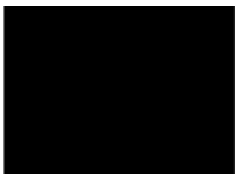
### INDIGO

Gray, Beige or Mocha Two-Tone



### TROPIC TEAL

Gray or Beige



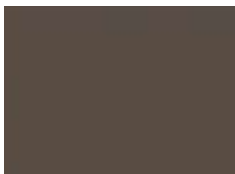
### BLACK ONYX

Gray, Beige or Mocha Two-Tone



### SAND

Beige or Mocha Two-Tone



### BRONZE MIST

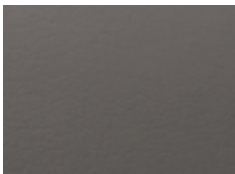
Gray, Beige or Mocha Two-Tone



### RUBY

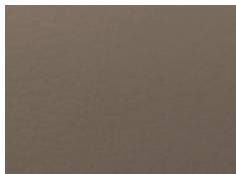
Gray, Beige or Mocha Two-Tone

## INTERIOR COLORS



### GRAY LEATHER

(GLS and Premiere)



### BEIGE LEATHER

(GLS and Premiere)



### MOCHA TWO-TONE LEATHER

(GLS and Premiere)



### GRAY CLOTH

(GL)



### BEIGE CLOTH

(GL)

All paint colors are metallic except Arctic White and Black Onyx.

The paint color samples shown here may vary slightly from actual vehicle color due to the printing process.

## A WORD ABOUT OLDSMOBILE

The Occupant Protection, Crash Avoidance and Security/Theft Deterrence sections below contain a partial listing of Silhouette safety features. See your dealer for complete details.

### USE YOUR GM CARD

What are you charging toward? When you use The GM Card, you receive 5% of every credit card purchase in GM Card Earnings\*, which can save you hundreds, even thousands toward the purchase or lease of a new Silhouette or any GM car, truck or SUV (excluding Saturn, Saab, and EV1 unless subject to a special promotion). To apply for your GM Card, call 1-800-8GM-CARD 24 hours a day. Or visit us online at [gmcards.com](http://gmcards.com).

\*See The GM Card Program Rules that are applicable to your Account for terms, conditions and limitations (either The GM Card Earnings Program Rules, which have a \$500 annual Earnings cap, or The GM Card Earnings and Redemption Allowance Program Rules, which have Earnings redemption limits).

### SMARTLEASE BY GMAC

SmartLease lets qualified customers pay for the expected depreciation of the vehicle over a period of time, plus a rent charge, taxes and fees, rather than paying for the entire vehicle as you would with traditional financing. This typically means with SmartLease you'll be able to drive a new vehicle every few years or drive a better-equipped model. Ask your Oldsmobile dealer for more information or call 1-800-32-SMART.

### ACCELERATE YOUR COLLEGE SAVINGS

UPromise is a revolutionary college savings accelerator that can help you save thousands of dollars for college. Through UPromise, America's most trusted companies contribute a portion of your everyday spending into a college savings account for your children, grandchildren or any other child you wish to support. For complete details on the GM-UPromise program, go to <http://upromise.gm.com>. Enrollment is simple and absolutely free.

### FOR OCCUPANT PROTECTION

Adjustable front shoulder belt guides • Driver and front-passenger air bags • Driver and front-passenger side-impact air bags • Automatic programmable power door locks • Adjustable rear outboard shoulder belt guides • Safety belt cinch capability for child seats • Sliding door child-security locks • Rear outboard lap/shoulder safety belts • Front outboard safety belt pretensioners • LATCH system for child restraints

### A NOTE ON CHILD SAFETY

Always use safety belts and proper child restraints, even with air bags. Children are safer when properly secured in a rear seat. Never place a rear-facing infant restraint in the front seat of any vehicle equipped with an active air bag. See your vehicle Owner's Manual and child safety seat instructions for more safety information.

### FOR CRASH AVOIDANCE

4-wheel antilock brakes • Brake/transmission shift interlock • Front disc/rear drum brakes • Disc brakes audible wear indicator • Maintenance-free battery • Tires with built-in tread wear indicators • Automatic daytime running lamps • Door warning reflectors • Foglamps • Halogen headlamps • Power heated outside rearview mirrors • Rear window defogger • Rear window wiper/washer • Front side window defogger • Tinted glass windshield • Automatic exterior lamp control

### FOR SECURITY/THEFT DETERRENCE

Laser-etched VIN plate • Remote hood release • PASS-Key vehicle theft-deterrent system • Battery rundown protection • Stolen vehicle tracking/emergency communication

### A NOTE ON TRAILERING

Maximum trailer weight is calculated assuming the driver and one passenger are in the tow vehicle and it has all required trailering equipment. The weight of additional optional equipment, passengers and cargo in the tow vehicle must be subtracted from the maximum trailer weight. Some models, when loaded with driver, passengers and maximum tongue load, may exceed the maximum GVW rating for that vehicle. Optional equipment and an appropriate owner-installed hitch may be required to achieve ratings. See your dealer for details.

### A WORD ABOUT THIS CATALOG

We have tried to make this catalog comprehensive and factual. We reserve the right, however, to make changes at any time, without notice, in prices, colors, materials, equipment specifications, models and availability. Since information may have been updated since the time of printing, please check with your Oldsmobile dealer for complete details. Oldsmobile reserves the right to lengthen or shorten the model year for any product for any reason, or to start and end model years at different times.

### THE GM MOBILITY PROGRAM

Oldsmobile recognizes the importance of mobility to everyone's life and, therefore, offers financial assistance to persons with disabilities through the General Motors Mobility Program. This program can provide up to \$1,000 reimbursement toward the cost of eligible aftermarket adaptive equipment for drivers and passengers. For details and free resource information, call: 1-800-323-9935 (TTY users: 1-800-833-9935).

### ASSEMBLY

Oldsmobiles and their components are assembled or produced by different operating units of General Motors, its subsidiaries or suppliers to GM Worldwide. We sometimes find it necessary to produce Oldsmobiles with different or differently sourced components than originally scheduled. Since some options may be unavailable when your vehicle is assembled, we suggest that you verify that your vehicle includes the equipment you ordered or, if there are changes, that they are acceptable to you.

### ENGINES

Oldsmobiles are equipped with engines produced by different operating units of GM, its subsidiaries or suppliers to GM Worldwide.

### UPDATED SERVICE INFORMATION

Oldsmobile dealers receive useful service bulletins about Oldsmobile products. You can order them by calling 1-800-551-4123.

### BUMPER-TO-BUMPER LIMITED WARRANTY

For three years or 36,000 miles (whichever comes first), every part of your new Silhouette is warranted for repairs to correct any vehicle defect related to materials or workmanship, including tires. With this limited warranty, there's no deductible, which means we'll pay for any repairs beyond normal maintenance. All body sheet metal components are warranted against rust-through from corrosion for six years or 100,000 miles, whichever comes first. There is also no deductible for rust-through repairs. Application of additional rust-inhibiting materials is not required or recommended. See your Oldsmobile dealer for the terms of this limited warranty.

### OWNER AFTERCARE

Throughout our 3 year/36,000 mile (whichever comes first) Bumper-to-Bumper Limited Warranty, we also offer Courtesy Transportation, free trip routing and 24-hour roadside assistance by calling 1-800-442-OLDS. At Oldsmobile, we're committed to your satisfaction long after the purchase of your car.

### GM PROTECTION PLAN

General Motors is backing up every new Oldsmobile Silhouette with the confidence of a 5 year/60,000 mile General Motors Protection Plan, which also includes roadside assistance and courtesy transportation. Take delivery by 10/01/02. General Motors Protection Plan Major Guard coverage for 5 years/60,000 miles (whichever comes first) effective from the date of delivery and 0 miles. Excludes normal maintenance. Some restrictions apply. See dealer for complete Major Guard details. In Florida, coverage is provided under Oldsmobile 60 month/60,000 mile limited warranty. See Florida dealer for complete limited warranty details.

### NEED MORE INFORMATION?

Visit our Web site at [www.silhouettevan.com](http://www.silhouettevan.com). For information on other Oldsmobile products, visit us at [www.oldsmobile.com](http://www.oldsmobile.com) or call 1-800-255-6537.

©2001 GM Corp. All Rights Reserved. Printed in USA 8/01. Alero, Bravada, Intrigue, Silhouette, Silhouette Premiere, PASSLock II, Delco, DEX-COOL, GMAC, GM Protection Plan, General Motors Protection Plan Major Guard, Major Guard, The GM Card, Oldsmobile, the Oldsmobile emblem, the Oldsmobile nameplate and SMARTLEASE are registered trademarks of General Motors Corp. Versatrak is a trademark of General Motors Corp. OnStar and the OnStar emblem are trademarks of OnStar Corp. General Motors Protection Plan is a service mark of General Motors Corp. "Aurora" is used with permission of Hankook Tire. Printed on recyclable paper. ♻



Silhouette

Bravada

Intrigue

Aurora

Alero