

# 03 F-250/F-350 SUPER DUTY



*no boundaries*



- POWERTRAINS
- FX4 OFF-ROAD
- KING RANCH
- XLT SPORT
- XLT SPORT CREW CAB
- INTERIORS
- FEATURES
- SPECIFICATIONS
- DIMENSIONS/ENGINES
- TOWING/PAYLOAD
- WHEELS/COLOR & TRIM

# THE POWERHOUSE OF TORQUE



**POWER STROKE V8**  
TURBO DIESEL



**TORQSHIFT**

## F-SERIES SUPER DUTY POWERTRAINS

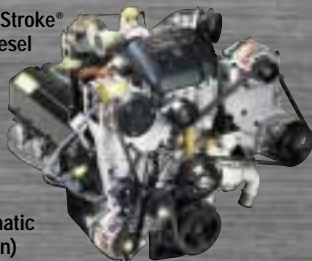
Powertrains are at the heart of doing what trucks are designed to do. However, without the engine and transmission working in tandem, the power to carry, push and pull can be compromised. Ford powertrains are carefully mated and tuned to optimize their performance. Rounding out this awesome display of power are the gas-fueled Tritons: the award-winning 5.4L V8 and the big 6.8L V10.

But the big news for 2003 is right here. Coming in Fall 2002, it's the all-new 32-valve 6.0L Power Stroke V8. It's diesel. It's turbocharged. It's the new diesel benchmark for the highest torque and diesel horsepower in its class. An unbelievable 560 lb.-ft. @ 2000 rpm and 325 hp @ 3300 rpm. Lower right is our new TorqShift™ heavy-duty transmission. It is specifically engineered to handle the new levels of power generated by the new 6.0L Power Stroke V8 Turbo Diesel.

Together, these engines are powerful reasons why Ford F-Series continues to be #1 in pickups.

New 6.0L: 325 max hp/560 lb.-ft. max torque

7.3L Power Stroke®  
V8 Turbo Diesel  
250 max hp



525 lb.-ft.  
max torque  
(with automatic  
transmission)

5.4L Triton™ V8  
260 max hp  
350 lb.-ft. max torque



6.8L Triton™ V10  
310 max hp  
425 lb.-ft. max torque





# TRAIL BOSS.



F-SERIES SUPER DUTY  
FX4 OFF-ROAD

If the terrain you usually operate on is outside of town, then the new F-250/F-350 FX4 Off-Road Super Duty is what you need to think about. Built on our massive steel frame, the FX4 Off-Road has transfer case and fuel tank skid plates to help protect them from flying rocks. To enhance its attitude, we equipped this beast with branded Rancho® shocks at all four corners. With ages of trucking under our belt, we know that on the weekends many work trucks miraculously turn into recreational vehicles. It's a funny thing about this F-250 Super Duty diesel-equipped FX4 – it can't tell the difference between pulling six tons of wet sand and a trailer filled with toys.

F-250 4x4 SuperCab XLT shown in Silver Metallic with optional FX4 Off-Road Package and other available equipment. \*Optional mirrors and engine available Fall 2002.

- 1 The license that says where you can go.
- 2 Branded Rancho shocks for the true off-roader.
- 3 New optional power/heated tow mirrors with integrated turn signals and manual telescoping/2-way-fold feature.\*

**FX4**  
OFF ROAD

1

2

3



# AS TOUGH AS TEXAS

# IS BIG.



F-SERIES SUPER DUTY  
KING RANCH

Which is more important to you? Having the pickup that boasts the Best-In-Class Interior Room? Or having the newest, most luxurious, Built Ford Tough Super Duty pickup? If you'd like to have your cake and well... you know, then the new King Ranch Crew Cab is the only truck you'll need (available Fall 2002). Trimmed in yards of rich, brown Castaño leather and uniquely branded inside and out, the F-250 and F-350 King Ranch pickups are entirely new topics for bragging rights. No matter which state you're in.

F-250 4x4 Crew Cab Long Bed with optional King Ranch package shown in Estate Green/Arizona Beige two-tone. Shown with optional equipment.

- 1 Quad captain's chairs with front/rear consoles.
- 2 Seating for 5 available with 2nd-row bench seat.
- 3 And yes, two real saddlebags complete the look.

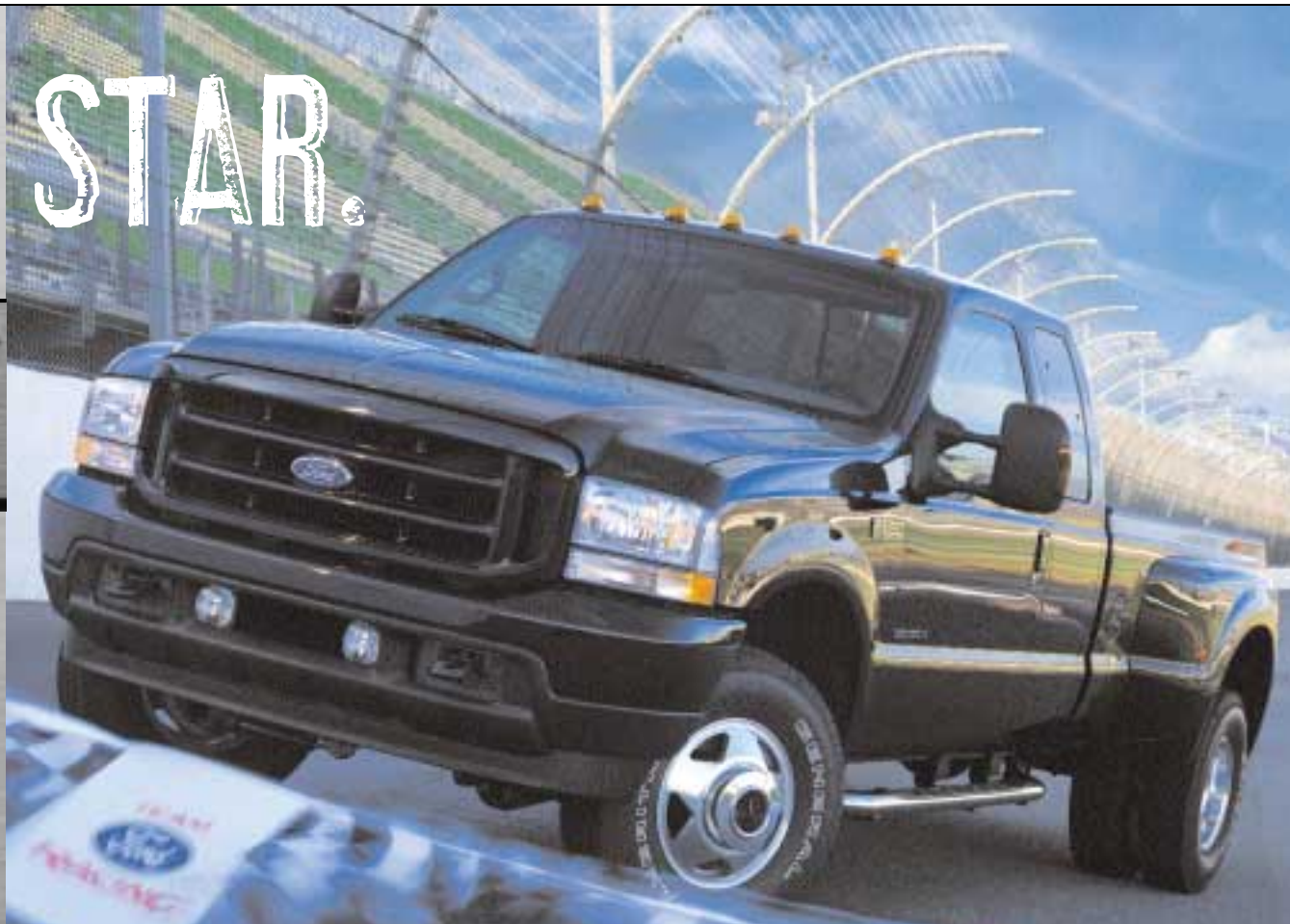




# TRACK STAR.

## F-SERIES SUPER DUTY XLT SPORT

Special look. Special two-tone interior. Special abilities. Not only is F-Series the Official Truck of NASCAR®, it looks the part too. Now the Super Duty XLT Sport is available in SuperCab, new Crew Cab and five monochromatic paint treatments. They're bad lookin'. Whether they're hauling a ton of rebar or pulling their weight around the track, XLT Sports command attention.



F-350 DRW 4x4 SuperCab XLT Sport shown in Black with optional equipment. \*Optional mirrors and 6.0L diesel engine available Fall 2002. F-350 DRW 4x4 Crew Cab XLT Sport in Red. Official truck of NASCAR. NASCAR® is a registered trademark of the National Association for Stock Car Racing, Inc.

- 1 XLT Sport Crew Cab with optional Ebony leather trim.
- 2 F-250 4x4 Crew Cab XLT Sport shown in Dark Shadow Grey with optional 6.8L V10, 4.30:1 axle ratio and trailer tow mirrors (available Fall 2002).



# BEST-IN-CLASS ROOM.

## F-SERIES SUPER DUTY INTERIORS

### **MOST ROOM IN THE BUSINESS.**

No matter which F-Series Super Duty cab you select, they are all bigger than the competition.

### **THE BEST-IN-CLASS CREW CAB.**

We went out of our way to make the Super Duty interior comfortable, work-worthy and extremely accommodating. To your right are the Lariat Super Duty seats trimmed in Medium Flint leather. Optional goodies are also shown (we just couldn't stop ourselves). Looks like a great place to work, doesn't it?

### **THE BEST-IN-CLASS SUPERCAB.**

The Super Duty SuperCab Medium Parchment cloth interior to the right is designed for durability and high functionality. Easy entry is made possible because of its seat-integrated safety-belt design. Its overall clean, modern appearance gives the four-door SuperCab interior best-in-class room and an open-for-business attitude. No fuss. Straightforward. Easy to operate. That's SuperCab.



SuperCab XLT cloth interior in Medium Parchment with optional equipment.





- 1 The best view in the house. We've done our homework, so you'll feel comfortably in control.
- 2 Optional on XLT and Lariat are power adjustable pedals. With a touch of a button, they'll move up to three inches to help give drivers the comfort they desire.
- 3 To help make you and your front passenger even more comfortable, Lariat Crew Cab comes standard with 6-way power seats and is available with heated seats.
- 4 Optional on XLT and Lariat is the premium electronic AM/FM stereo with a 6-disc in-dash CD player.
- 5 Included with Lariat is the overhead console containing a trip computer, outside temp display, compass and space for your garage door opener, plus a bin for a pair of sunglasses.



Shown above is another beautiful way to outfit the roomiest pickup in the business. Any business. Four full-size doors open to reveal a truly cavernous space. The Lariat LE option makes this interior one of the most luxurious on the road today. With Lariat LE, quad captain's chairs are trimmed in perforated leather and are complemented by woodgrain appearance on the door panels as well as on both console covers. Or, you can choose to have a rear bench for even more seating capacity. Either way, you and your crew will have the most room available to relax, stretch out and enjoy. That's Crew Cab.

# INTERIOR FEATURES

- 1 Order the new class-exclusive power moonroof (available Fall 2002) and, along with a breath of fresh air, you'll see the sky, tops of trees and skyscrapers like never before. Optional on XLT and Lariat Crew Cab.
- 2 Standard on Lariat is the sliding rear window. It's a quick way to bring fresh air into the cabin. Optional on XL and XLT.
- 3 Optional on XLT and Lariat is the reverse sensing system, designed to detect objects behind the vehicle and then audibly alert the driver to their presence.
- 4 Optional on XLT and Lariat are bright polished tubular cab steps. They make climbing aboard easy, and they just plain look great.



The F-350 Super Duty DRW Lariat LE has one-of-a-kind looks sure to turn heads. From its distinctive sunvisor with integrated roof marker lights to its Lariat LE-branded interior (shown on previous page), this is one tough-as-can-be luxury workhorse. Also included are lighted "diamond plate" running boards and the Built Ford Tough trailer tow hitch receiver. Available in either a two-tone paint scheme of Ebony/Dark Shadow Grey (shown above) or in solid Ebony.

# EXTERIOR FEATURES





## SPECIFICATIONS

### MODEL-SPECIFIC GROUPS/PACKAGES

XL			
XLT			
Lariat			
<input type="checkbox"/>	<input type="checkbox"/>	<input type="checkbox"/>	<b>Camper Package</b> – Includes heavy-service front springs, rear stabilizer bar (SRW vehicles only) and slide-in camper certification
<input type="checkbox"/>	<input type="checkbox"/>	<input type="checkbox"/>	<b>FX4 Off-Road Package</b> – Includes skid plates for transfer case and fuel tank, branded Rancho® front and rear shocks, steering damper and FX4 decals (4x4 models only)
<input type="checkbox"/>	<input type="checkbox"/>	<input type="checkbox"/>	<b>Heavy-Service Suspension Package</b> – Includes heavy-service front springs and steering damper. Note: 200-lb. upgrade above the spring computer-selected as a consequence of options chosen, not included if maximum springs have been computer-selected as standard equipment
—	—	<input checked="" type="checkbox"/>	<b>King Ranch Package</b> (late availability) – Includes unique Arizona Beige two-tone paint and accented grille insert, wheel-lip moldings (SRW only), bumpers, bed rails/tailgate top molding, body-side moldings, lighted diamond plate running boards, tape stripe and polished aluminum wheels; Castaño brown leather-trimmed King Ranch-branded quad captain's chairs and center consoles, steering wheel and assist handles (rear bench seat with fold-down center armrest optional); heated driver and front passenger seats; body-color exterior door handles and dual trailer tow mirrors with power/heated glass and integrated turn signals (manual telescoping/2-way fold); King Ranch branding on front fenders, tailgate and wheels (SRW only)
—	—	<input checked="" type="checkbox"/>	<b>Lariat LE Package</b> – Includes all Lariat trim features, plus quad captain's chairs with leather seating surfaces, body-color door handles, exterior windshield sunvisor with roof clearance lights, front and rear seat console, lighted diamond plate running boards, power trailer tow mirrors, heated driver and front passenger seats, unique floor mats with "Lariat LE" logo, simulated woodgrain appliques, unique badging on tailgate, LT235/85R16 all-season OWL tires (4), inner tires with DRW and spare are BSW
<input type="checkbox"/>	<input type="checkbox"/>	<input type="checkbox"/>	<b>Maximum Front GAWR Package</b> – Includes highest GAWR/springs and steering damper
<input type="checkbox"/>	<input type="checkbox"/>	—	<b>Pickup Box Delete</b> – Deletes pickup box, tailgate, lower door moldings, rear bumper and spare tire carrier (see dealer for model eligibility and recommendations)
<input type="checkbox"/>	<input type="checkbox"/>	<input type="checkbox"/>	<b>Snow Plow Package</b> – Includes highest GAWR/front springs and steering damper
<input checked="" type="checkbox"/>	—	—	<b>XL Décor Group</b> – Includes chrome bumpers, single-beam jewel-effect headlamps, and steel wheels with full sport wheelcovers
—	<input checked="" type="checkbox"/>	—	<b>XLT Sport Package</b> – Includes unique body-color door handles, bumpers and grille, privacy glass, sliding rear window, fog lamps, bright polished tubular cab steps, chrome exhaust tip, LT265/75R16 all-season OWL tires, Built Ford Tough hitch receiver, unique 40/20/40 two-tone (black and charcoal) cloth seats, unique carpet, unique front and rear rubber floor mats, unique leather-wrapped steering wheel and unique Ebony interior accents

Select Availability  Optional — Not Available

Competitive comparisons based on publicly available information and Ford certification data at time of printing. Some features discussed may be optional. Vehicles shown may contain optional equipment. Features shown may be offered only in combination with other options or subject to additional ordering requirements or limitations. Following publication of the catalog, certain changes in standard equipment, options and the like, or product delays, may have occurred which would not be included in these pages. Your Ford Dealer is the best source for up-to-date information. Ford Division reserves the right to change product specifications at any time without incurring obligations.

### F-SERIES SUPER DUTY SPECIFICATIONS

#### Front Suspension

Type	Twin I-Beam (4x2); Solid Monobeam axle (4x4)
Axle (rating @ ground)	4850 lbs. (4x2); 5200 lbs. (4x4)
Springs	Coil (4x2); leaf (4x4)
Shock absorbers	1 <sup>3</sup> / <sub>8</sub> " gas type
Stabilizer bar	Standard

#### Rear Suspension

Type	Solid axle
Axle (rating @ ground)	6830 lbs. (F-250/F-350 SRW); 8250 lbs. (F-350 DRW)
Springs	Leaf
Shock absorbers	1 <sup>3</sup> / <sub>8</sub> " gas type
Stabilizer bar	Standard on DRW pickup; optional in package on SRW pickup

#### Steering

Type	Haltenberger linkage (4x2); cross-tie linkage (4x4)
Assist	Power
Overall ratio	19.6:1 (4x2); 20.3:1 (4x4)

#### Brakes

Type	4-wheel disc (standard); 4-wheel ABS (standard)
Front	13.03" rotor diameter
Rear	12.83" rotor diameter

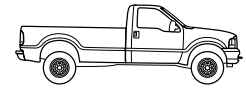
#### Wheels

Type	Steel (standard); chrome steel or aluminum (optional)
Size	16"
Number of studs	8
Bolt circle diameter	6.7" (170 mm)

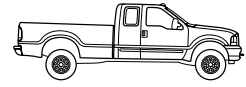
Powertrains	4x4	6-Speed Manual	4-Speed Automatic	5-Speed Automatic
<b>Engine</b>	<b>Transfer Case</b>			
5.4L Triton™ SEFI V8	2-speed manual	<input checked="" type="checkbox"/>	<input type="checkbox"/>	—
6.8L Triton™ SEFI V10	2-speed manual	<input checked="" type="checkbox"/>	<input type="checkbox"/>	—
7.3L Power Stroke® Diesel V8	2-speed manual	<input type="checkbox"/>	<input type="checkbox"/>	—
6.0L Power Stroke® Diesel V8*	2-speed manual	<input type="checkbox"/>	—	<input type="checkbox"/>

■ Standard  Select Availability  Optional — Not Available

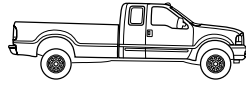
\*Available Fall 2002.



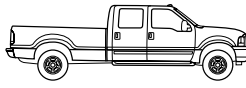
REGULAR CAB  
LONG BOX



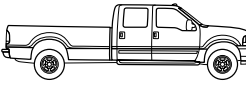
SUPERCAB  
SHORT BOX



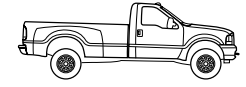
SUPERCAB  
LONG BOX



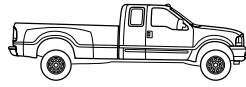
CREW CAB  
SHORT BOX



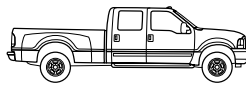
CREW CAB  
LONG BOX



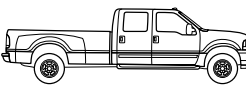
F-350 REGULAR CAB DRW  
LONG BOX



F-350 SUPERCAB DRW  
LONG BOX



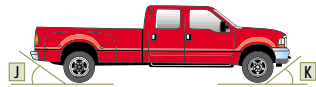
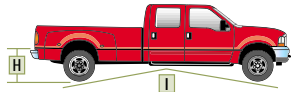
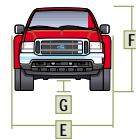
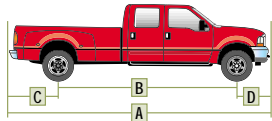
F-350 CREW CAB DRW  
SHORT BOX



F-350 CREW CAB DRW  
LONG BOX



## DIMENSIONS



	Regular Cab 4x2/4x4	SuperCab SWB 4x2/4x4	SuperCab LWB 4x2/4x4	Crew Cab SWB 4x2/4x4	Crew Cab LWB 4x2/4x4
<b>Exterior</b>					
A. Overall length	226.6"	231.4"	247.6"	245.8"	262.0"
B. Wheelbase	137.0"	141.8"	158.0"	156.2"	172.4"
C. Overhang – rear	52.2"	52.2"	52.2"	52.2"	52.2"
D. Overhang – front	37.4"	37.4"	37.4"	37.4"	37.4"
E. Overall width – SRW	79.9"	79.9"	79.9"	79.9"	79.9"
E. Overall width – DRW (at rear wheel housing)	95.5"	—	95.5"	95.5"	95.5"
F. Height – F-250 SRW	76.2"/78.9"	76.6"/79.3"	76.5"/79.0"	77.2"/79.8"	77.0"/76.6"
F. Height – F-350 SRW	76.3"/80.3"	76.8"/80.7"	77.3"/80.3"	77.0"/77.1"	77.3"/80.0"
F. Height – F-350 DRW	78.0"/80.0"	—	77.1"/79.5"	78.9"/77.0"	78.6"/80.0"
G. Ground clearance (rear axle) F-250	8.3"	8.3"	8.3"	8.3"	8.3"
G. Ground clearance (rear axle) F-350 SRW	8.1"	8.1"	8.1"	8.1"	8.1"
G. Ground clearance (rear axle) F-350 DRW	7.8"	—	7.8"	7.8"	7.8"
H. Load height F-250	34.0"/35.2"	33.9"/35.1"	33.6"/34.9"	33.3"/34.6"	33.2"/34.6"
H. Load height F-350 SRW	34.0"/37.8"	33.9"/37.7"	33.5"/37.2"	33.3"/35.9"	33.1"/35.7"
H. Load height F-350 DRW	35.0"/35.9"	—	34.7"/35.8"	34.5"/37.0"	34.3"/35.3"
I. Ramp breakover angle F-250	16.0°/22.2°	15.8°/21.7°	11.9°/19.7°	14.5°/19.7°	13.4°/18.6°
I. Ramp breakover angle F-350 SRW	15.0°/21.4°	15.0°/20.8°	13.8°/19.3°	14.0°/12.1°	13.1°/11.4°
I. Ramp breakover angle F-350 DRW	14.7°/22.2°	—	13.3°/19.6°	13.4°/19.7°	12.6°/18.5°
J. Angle of departure F-250	11.2°/15.9°	11.2°/15.9°	11.2°/15.9°	11.2°/15.9°	11.2°/15.9°
J. Angle of departure F-350 SRW	11.0°/15.7°	11.0°/15.7°	11.0°/15.7°	11.0°/15.7°	11.0°/15.7°
J. Angle of departure F-350 DRW	10.5°/15.9°	—	10.5°/15.9°	10.5°/15.9°	10.5°/15.9°
K. Angle of approach F-250	20.8°/27.7°	20.8°	20.8°	20.8°/27.6°	20.8°/27.6°
K. Angle of approach F-350 SRW	20.8°/27.7°	20.8°/27.7°	20.8°/27.7°	20.8°/27.6°	20.8°/27.6°
K. Angle of approach F-350 DRW	20.8°/27.7°	—	20.8°	20.8°/27.6°	20.8°/27.6°
<b>Interior</b>					
<b>1st Row</b>					
Head room	41.3"	41.4"	41.4"	41.4"	41.4"
Shoulder room	68.0"	68.0"	68.0"	68.0"	68.0"
Hip room	67.4"	67.4"	67.4"	67.4"	67.4"
Leg room	40.7"	40.7"	40.7"	40.7"	40.7"
<b>2nd row</b>					
Head room	—	38.5"	38.5"	41.0"	41.0"
Shoulder room	—	68.0"	68.0"	68.0"	68.0"
Hip room	—	67.3"	67.3"	67.3"	67.3"
Leg room	—	32.4"	32.4"	41.3"	41.3"
<b>Cargo Area</b>					
Volume (cu. ft.)	77.7	64.7	77.7	64.7	77.7
Length at floor	98.6"	82.4"	98.6"	82.4"	98.6"
Width at wheelhouse	50.9"	50.9"	50.9"	50.9"	50.9"
Width at top of box	63.9"	63.9"	63.9"	63.9"	63.9"
Height with molding	20.0"	20.0"	20.0"	20.0"	20.0"

SRW = single rear wheel DRW = dual rear wheel SWB = short wheelbase (6 1/4' cargo box) LWB = long wheelbase (8' cargo box)

## ENGINES



5.4L SOHC Triton™ V8

6.8L SOHC Triton™ V10

### F-SERIES SUPER DUTY POWERTRAIN SPECIFICATIONS

	5.4L Triton™ V8 SOHC	6.8L Triton™ V10 SOHC
Type	Sequential Electronic	Sequential Electronic
Fuel injection	EEC-V	EEC-V
Engine control system	Specially tuned	Specially tuned
Induction system	12 volt; 650 cca/72 amp	12 volt; 650 cca/72 amp
Battery	130 amp	130 amp
Alternator	Pressurized series flow	Pressurized series flow
Cooling system	8	10
Cylinders	Aluminum	Aluminum
Cylinder head material	Cast iron	Cast iron
Block material	Hydraulic roller	Hydraulic roller
Valve operation	Silent chain	Silent chain
Camshaft drive	3.55"	3.55"
Bore	4.16"	4.16"
Stroke	9.0:1	9.0:1
Compression ratio	260 @ 4500	310 @ 4250
Horsepower (hp @ rpm)	350 @ 2500	425 @ 3250
Torque (lb.-ft. @ rpm)	Unleaded	Unleaded
Recommended fuel		
<b>7.3L Power Stroke® V8 Turbo Diesel OHV (16 Valve)</b>		
Type	High-pressure, 2-stage injector (HEUI)	Electro-hydraulic w/ Generation 2 fuel injection
Fuel injection	EEC-V	Electronic
Engine control system	Turbocharger, intercooler	Electronic Variable Response Turbocharger (EVRT™), intercooler
Induction system	Dual 12 volt; 750 cca/78 amp	Dual 12 volt; 750 cca/78 amp
Battery	130 amp (Dual 130 amp opt.)	130 amp (Dual 130 amp opt.)
Alternator	Pressurized series flow	Pressurized series flow
Cooling system	8	8
Cylinders	Cast iron	Cast iron
Cylinder head material	Cast iron	Cast iron
Block material	Push rod/rocker arms	Push rod/rocker arms
Valve operation	Gear	Gear
Camshaft drive	4.11"	3.74"
Bore	4.18"	4.13"
Stroke	17.5:1	18.0:1
Compression ratio	275 @ 2800 (man. trans.) 250 @ 2600 (auto. trans.)	325 @ 3300
Horsepower (hp @ rpm)	520 @ 1600 (man. trans.) 525 @ 1600 (auto. trans.)	560 @ 2000
Torque (lb.-ft. @ rpm)	Diesel	Diesel
Recommended fuel		

\*Available Fall 2002.

CONVENTIONAL TOWING Maximum Loaded Trailer Weight (lbs.) – Automatic Transmission

Engine	Axle Ratio	GCWR (lbs.)	REGULAR CAB				SUPERCAB				F-250/F-350 TOWING/PAYLOAD CREW CAB			
			F-250/F-350 SRW 4x2	F-250/F-350 SRW 4x4	F-350 DRW 4x2	F-350 DRW 4x4	F-250/F-350 SRW 4x2	F-250/F-350 SRW 4x4	F-350 DRW 4x2	F-350 DRW 4x4	F-250/F-350 SRW 4x2	F-250/F-350 SRW 4x4	F-350 DRW 4x2	F-350 DRW 4x4
			5.4L SOHC V8	3.73	13,500	7800	7400	7600	7200	7500	7100	7200	6800	7200
6.8L SOHC V10	4.10	15,000	9300	8900	9100	8700	9000	8600	8700	8300	8700	8400	—	—
	3.73	17,000	11,200	10,800	10,900	10,400	10,800	10,400	10,500	10,100	10,600	10,200	10,300	9900
	4.30	20,000	12,500	12,500	12,500	12,500	12,500	12,500	12,500	12,500	12,500	12,500	12,500	12,500
7.3L Turbo Diesel V8 <sup>2</sup>	4.30	20,000 <sup>1</sup>	—	—	13,900	13,400	—	—	13,500	13,100	—	—	13,300	12,900
	3.73	20,000	12,500	12,500	12,500	12,500	12,500	12,500	12,500	12,500	12,500	12,500	12,500	12,400
	4.10	20,000	—	—	12,500	12,500	—	—	12,500	12,500	—	—	12,500	12,400
6.0L Turbo Diesel V8 <sup>2</sup>	3.73	20,000	12,500	12,500	13,400	13,000	12,500	12,500	13,000	12,600	12,500	12,500	12,800	12,400
	4.10	20,000	—	—	13,400	13,000	—	—	13,000	12,600	—	—	12,800	12,400

Maximum Loaded Trailer Weight (lbs.) – Manual Transmission

5.4L SOHC V8	3.73	13,500	7800	7400	7500	7100	7400	7100	7200	6800	7200	6800	—	—
	4.10	15,000	9300	8900	9000	8600	8900	8600	8700	8300	8700	8300	—	—
6.8L SOHC V10	3.73	16,500	10,600	10,200	10,300	9900	10,300	9900	10,000	9600	10,100	9700	9800	9400
	4.30	20,000	12,500	12,500	12,500	12,500	12,500	12,500	12,500	12,500	12,500	12,500	12,500	12,500
	4.30	20,000 <sup>1</sup>	—	—	13,800	13,400	—	—	13,500	13,100	—	—	13,300	12,900
7.3L Turbo Diesel V8 <sup>2</sup>	3.73	20,000	12,500	12,500	12,500	12,500	12,500	12,500	12,500	12,500	12,500	12,500	12,500	12,400
	4.10	20,000	—	—	12,500	12,500	—	—	12,500	12,500	—	—	12,500	12,400
6.0L Turbo Diesel V8 <sup>2</sup>	3.73	20,000	12,500	12,500	13,300	12,900	12,500	12,500	13,000	12,600	12,500	12,500	12,800	12,400
	4.10	20,000	—	—	13,300	12,900	—	—	13,000	12,600	—	—	12,800	12,400

FIFTH-WHEEL TOWING Maximum Loaded Trailer Weight (lbs.) – Automatic Transmission<sup>3</sup>

Engine	Axle Ratio	GCWR (lbs.)	REGULAR CAB				SUPERCAB				CREW CAB			
			F-250/F-350 SRW 4x2	F-250/F-350 SRW 4x4	F-350 DRW 4x2	F-350 DRW 4x4	F-250/F-350 SRW 4x2	F-250/F-350 SRW 4x4	F-350 DRW 4x2	F-350 DRW 4x4	F-250/F-350 SRW 4x2	F-250/F-350 SRW 4x4	F-350 DRW 4x2	F-350 DRW 4x4
			5.4L SOHC V8	3.73	13,500	7800	7400	7600	7200	7500	7100	7200	6800	7200
6.8L SOHC V10	4.10	15,000	9300	8900	9100	8700	9000	8600	8700	8300	8700	8400	—	—
	3.73	17,000	11,200	10,800	10,900	10,400	10,800	10,400	10,500	10,100	10,600	10,200	10,300	9900
	4.30	20,000	14,200	13,800	13,900	13,400	13,800	13,400	13,500	13,100	13,600	13,200	13,300	12,900
7.3L Turbo Diesel V8 <sup>4</sup>	3.73	20,000	13,700	13,300	13,400	13,000	13,400	13,000 <sup>3</sup>	13,100	12,700	13,100	12,800 <sup>3</sup>	12,800	12,400
	4.10	20,000	—	—	13,400	13,000	—	—	13,100	12,700	—	—	12,800	12,400
6.0L Turbo Diesel V8 <sup>4</sup>	3.73	20,000	13,700	13,300	13,400	13,000	13,300	13,000 <sup>3</sup>	13,000	12,600	13,100	12,700 <sup>3</sup>	12,800	12,400
	4.10	20,000	—	—	13,400	13,000	—	—	13,000	12,600	—	—	12,800	12,400

Maximum Loaded Trailer Weight (lbs.) – Manual Transmission<sup>3</sup>

5.4L SOHC V8	3.73	13,500	7800	7400	7500	7100	7400	7100	7200	6800	7200	6800	—	—
	4.10	15,000	9300	8900	9000	8600	8900	8600	8700	8300	8700	8300	—	—
6.8L SOHC V10	3.73	16,500	10,600	10,200	10,300	9900	10,300	9900	10,000	9600	10,100	9700	9800	9400
	4.30	20,000	14,100	13,700	13,800	13,400	13,800	13,400	13,500	13,100	13,600	13,200	13,300	12,900
	4.30	20,000	13,700	13,300	13,400	13,000	13,300	13,000 <sup>3</sup>	13,000	12,600	13,100	12,700 <sup>3</sup>	12,800	12,400
7.3L Turbo Diesel V8 <sup>4</sup>	3.73	20,000	13,700	13,300	13,400	13,000	13,300	13,000 <sup>3</sup>	13,000	12,600	13,100	12,700 <sup>3</sup>	12,800	12,400
	4.10	20,000	—	—	13,400	13,000	—	—	13,000	12,600	—	—	12,800	12,400
6.0L Turbo Diesel V8 <sup>4</sup>	3.73	20,000	13,600	13,300	13,300	12,900	13,300	12,900 <sup>3</sup>	13,000	12,600	12,900	12,700 <sup>3</sup>	12,800	12,400
	4.10	20,000	—	—	13,300	12,900	—	—	13,000	12,600	—	—	12,800	12,400

MAXIMUM PAYLOAD WEIGHT RATING (LBS.) – Model/Wheelbase

Super Duty Series	GVWR (lbs.)	REGULAR CAB		SUPERCAB		CREW CAB	
		Pickup	Pickup	Pickup	Pickup	Pickup	Pickup
F-250 4x2	8800	137.0"	141.8"	158.0"	156.2"	172.4"	—
	8800	3380	3195	3035	2955	2810	—
	8800	2960	2790	2625	2525	2390	—
	9700	4285	4100	3940	3860	3715	—
	9900	4485	4300	4140	4060	3915	—
F-350 4x2	11,000	5135	—	4790	4775	4565	—
	11,200	5540	—	5195	4975	4765	—
	11,500	5235	—	4875	4860	4650	—
	9700	3865	3695	3530	3430	3295	—
	9900	4065	3895	3730	3630	3495	—
	11,000	4665	—	4330	4300	4100	—
	11,200	5075	—	4740	4500	4300	—
11,500	4760	—	4425	4395	4195	—	

Maximum capabilities shown are for properly equipped vehicles with required equipment and a 150-lb. driver. Weight of additional options, equipment, passengers and cargo must be deducted from this weight. For additional information, see your Ford Dealer.

**Conventional Towing Notes:** This information also applies to models with Pickup Box Delete option (66D). Trailer tongue load weight should be 10-15% of total loaded trailer weight. Make sure that the vehicle payload (reduced by option weight) will accommodate trailer tongue load weight and the weight of passengers and cargo added to the towing vehicle. The addition of trailer tongue load weight, and the weight of passengers and cargo cannot cause vehicle weights to exceed the rear GAWR (Gross Axle Weight Rating) or GVWR (Gross Vehicle Weight Rating). These ratings can be found on the vehicle Safety Compliance Certification Label. For F-250/F-350 SRW models, F-350 trailer weights are shown; F-250 trailer weights are within 100 pounds. Check with your sales consultant.

**Conventional Towing Footnotes:** <sup>1</sup>With 15,000-lb. capacity optional hitch receiver (capacity increase on DRW models effective with Fall 2002 production). <sup>2</sup>6.0L diesel replaces 7.3L diesel effective with Fall 2002 production. Optional hitch receiver capacity with 6.0L diesel is 12,500 lbs. with SRW models and 15,000 lbs. with DRW models.

**Fifth-Wheel Towing Notes:** This information also applies to models with Pickup Box Delete option (66D). Trailer king pin weight should be 15-25% of total loaded trailer weight. Make sure that the vehicle payload (reduced by option weight) will accommodate trailer king pin weight and the weight of passengers and cargo added to the towing vehicle. The addition of trailer king pin weight, and the weight of passengers and cargo cannot cause vehicle weights to exceed the rear GAWR (Gross Axle Weight Rating) or GVWR (Gross Vehicle Weight Rating). These ratings can be found on the vehicle Safety Compliance Certification Label.

**Fifth-Wheel Towing Footnotes:** <sup>3</sup>For F-250/F-350 SRW models, F-350 trailer weights are shown; F-250 trailer weights are within 100 lbs. except for the F-250 SRW 4x4 SuperCab and Crew Cab applications indicated above. For these applications, the maximum loaded trailer weight is 12,000 lbs. for F-250 SRW 4x4 SuperCab and 10,400 lbs. for F-250 SRW 4x4 Crew Cab. <sup>4</sup>6.0L diesel replaces 7.3L diesel effective with Fall 2002 production.



## WHEELS



16" Argent Steel Wheel with Black Hub Cover (SRW)



16" Argent Steel Wheel (DRW)



16" Steel Wheel with Full Sport Wheelcover (SRW)



16" Polished Aluminum Wheel with Bright Hub Cover (DRW)



16" Deluxe Aluminum Wheel with Bright Hub Cover (SRW)



16" Chrome Steel Wheel with Bright Hub Cover (SRW)



16" Premium Aluminum Wheel with Bright Hub Cover (SRW)



16" Premium Painted Aluminum Wheel with King Ranch Hub Cover (SRW)

## PAINT AND TRIM COLORS

### INTERIOR/EXTERIOR COMBINATIONS

Medium Parchment	
Medium Flint	
■	<b>XL/XLT</b>
■	Oxford White
■	Arizona Beige Metallic
■	Red
■	Toreador Red Metallic
■	Dark Highland Green Metallic
■	Sonic Blue Metallic*
■	True Blue Metallic
■	Silver Metallic
■	Dark Shadow Grey Metallic
■	Black
■	<b>XLT Two-Tone</b>
■	Oxford White/Silver Metallic
■	Sonic Blue Metallic*/Silver Metallic
■	True Blue Metallic/Silver Metallic
■	Black/Silver Metallic
■	<b>XLT Sport Package</b>
■	Oxford White
■	Red
■	Sonic Blue Metallic*
■	Dark Shadow Grey Metallic
■	Black

Medium Parchment	
Medium Flint	
■	<b>Lariat</b>
■	Oxford White
■	Arizona Beige Metallic
■	Red
■	Toreador Red Metallic
■	Dark Highland Green Metallic
■	Sonic Blue Metallic*
■	True Blue Metallic
■	Dark Shadow Grey Metallic
■	Black
■	<b>Lariat Two-Tone</b>
■	Oxford White/Arizona Beige Metallic
■	Oxford White/Silver Metallic
■	Arizona Beige Metallic/Black
■	Toreador Red Metallic/Arizona Beige Metallic
■	Toreador Red Metallic/Silver Metallic
■	Dark Highland Green Metallic/Arizona Beige Metallic
■	Sonic Blue Metallic*/Arizona Beige Metallic
■	Sonic Blue Metallic*/Silver Metallic
■	True Blue Metallic/Arizona Beige Metallic
■	True Blue Metallic/Silver Metallic
■	Dark Shadow Grey Metallic/Black
■	Black/Arizona Beige Metallic
■	Black/Silver Metallic
■	<b>Lariat LE</b>
■	Ebony
■	<b>Lariat LE Two-Tone</b>
■	Ebony/Dark Shadow Grey Metallic
■	<b>King Ranch Package</b>
■	Oxford White/Arizona Beige Metallic**
■	Chestnut Metallic/Arizona Beige Metallic**
■	Estate Green Metallic/Arizona Beige Metallic**

\*New for 2003.

\*\*Castano seating surfaces.

PAINT AND TRIM COLORS



Oxford White



Arizona Beige Metallic



Red



Chestnut Metallic\*



Toreador Red Metallic



Estate Green Metallic\*



Dark Highland Green Metallic



Sonic Blue Metallic



True Blue Metallic



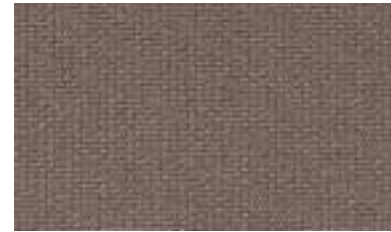
Silver Metallic



Dark Shadow Grey Metallic



Black



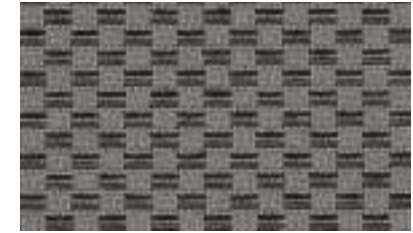
Medium Parchment Cloth



Medium Flint Cloth



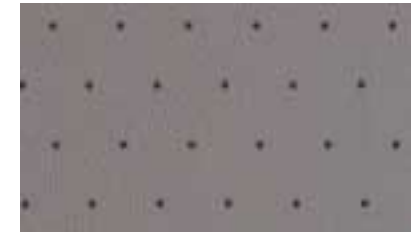
Medium Parchment Cloth/Vinyl Weave



Medium Flint Cloth/Vinyl Weave



Medium Parchment Leather



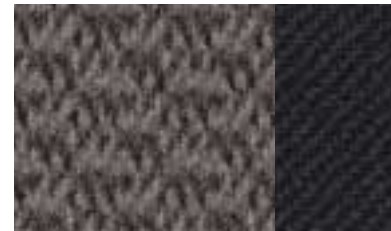
Medium Flint Leather



Black Leather\*\*



Castaño Leather\*



Dark Flint Two-Tone Cloth\*\*

\*King Ranch only. \*\*XLT Sport only.  
Ford uses clearcoat paint for beauty and protection. Colors shown are representative only. See your dealer for actual paint/trim options.