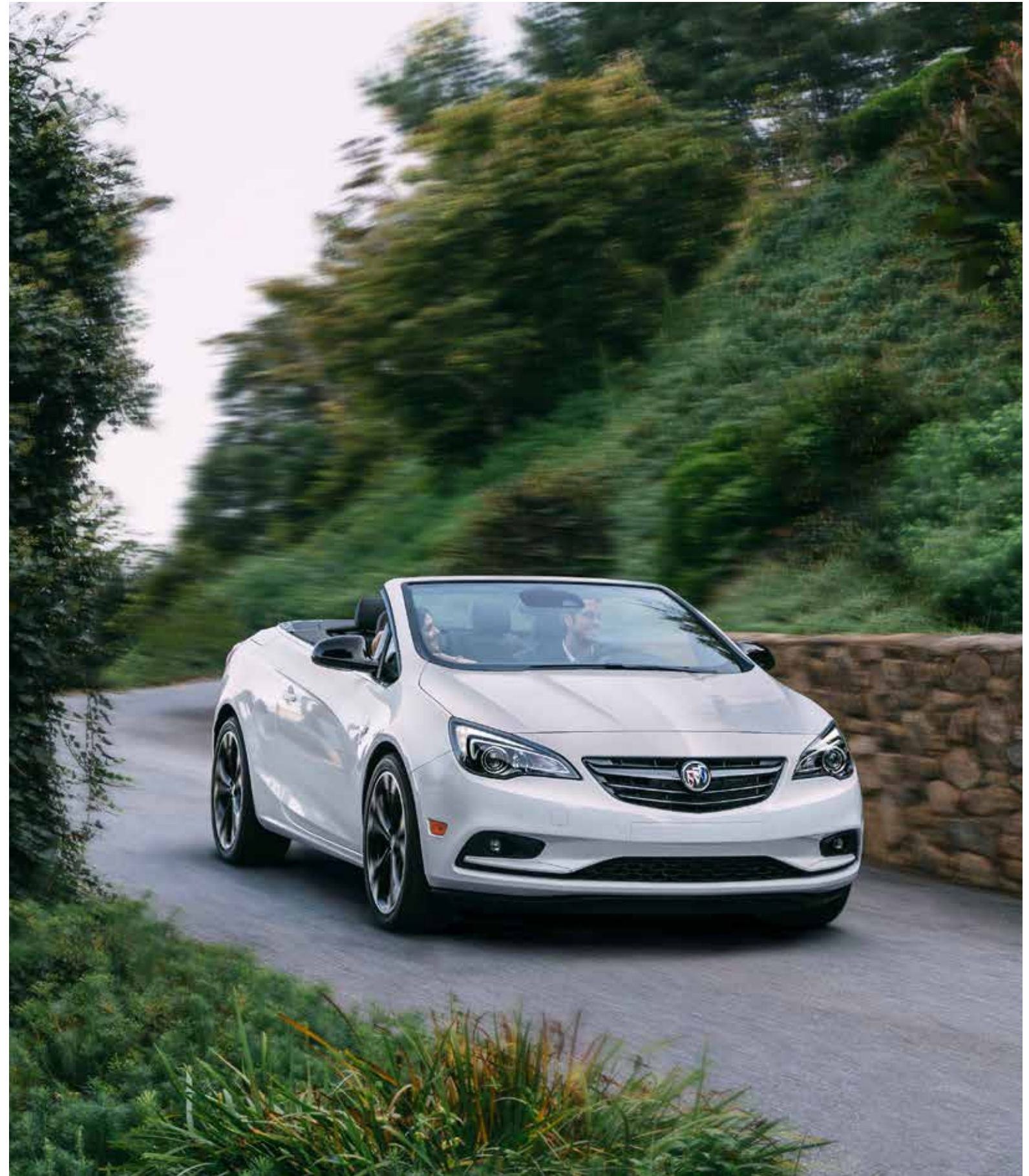




2019 BUICK **CASCADA**





Cascada Premium shown in Smoked Pearl Metallic with available features.

LIVE LIFE WIDE OPEN

Cascada is meticulously crafted for those with an inspired sense of style. It takes just 17 seconds for Cascada's convertible top to automatically lower. It can be done at speeds of up to 31 mph, and that opens up a world of possibilities. You'll immediately sense the seamless performance of its turbocharged engine and the agility of its sport-tuned suspension. Cascada's distinct design, innovative soft top and array of color options reflect the pure fun of the open road.

Cascada Sport Touring shown in Sport Red and Cascada Premium shown in Ebony Twilight Metallic with Sweet Mocha convertible top and available features.





Cascada Premium interior shown in Jet Black with Jet Black accents.

ALL-SEASON CONVERTIBLE

Designed from the outset as a true four-passenger convertible, Cascada offers spacious seating. When you're soaking up the sun, its heat-reflective, perforated leather-appointed seating helps keep things cooled down.

When there's a chill in the air, switch on the heated front seats and grip the heated, leather-wrapped steering wheel. And thermal barriers in Cascada's top help the interior stay warm.



GIVE YOURSELF ROOM TO ROAM

PREMIUM MATERIALS Intricately weaving premium materials, textures and technologies, the Cascada interior elevates your open-air experience.

EASY ENTRY SYSTEM Rear-seat passengers will find the Easy Entry System helpful. Simply start to push the front seatback forward, and the seat automatically moves up for easy entry into the rear seat, then returns to its original position when the seatback is moved rearward.

AMPLE TRUNK SPACE Cascada meets your storage needs, too. With the top up, trunk space is 13.4 cubic feet.¹ With the top down, it's 9.8 cubic feet.¹

¹Cargo and load capacity limited by weight and distribution.



Cascada Premium interior shown in Light Neutral with Jet Black accents.



ADJUST YOUR
ATTITUDE IN JUST
17 SECONDS

Cascada's convertible top automatically retracts. The rear decklid opens, and the top neatly folds and stows under a hard tonneau cover. Easy activation lowers the top in just 17 seconds, and puts the top back up in only 19 seconds, at speeds of up to 31 mph.

Want the top up? It's easy to see why. With available top colors Ebony, Malbec and Sweet Mocha, Cascada is that rare convertible that's as stylish with the top up as it is down.



RAISE YOUR ADRENALINE

1.6L TURBO ENGINE The 200-hp 1.6L turbocharged engine rewards you with potent performance. The engine's 207 lb-ft of torque creates brisk acceleration, and there's even an overboost phase that briefly pushes torque to an estimated 221 lb-ft. Twin harmonic balancing shafts within the engine ensure smooth power, leaving you to enjoy perfect harmony with the road.

SMOOTH HANDLING Cascada enables nimble handling and a feeling of confidence behind the wheel, thanks in part to a rigid chassis at the core of the convertible's refined driving dynamics.

SPORT-LOWERED CHASSIS To help Cascada get optimal grip from its big, bold 20-inch alloy wheels, the suspension engineers lowered the chassis.

STABILITRAK To give you more confidence on icy, wet or uneven roads, StabiliTrak automatically intervenes when it senses loss of traction to help you maintain control.

HIPER STRUT FRONT SUSPENSION Cascada's innovative HiPer Strut front suspension is engineered to help you enjoy a more direct, linear steering response.



Cascada Sport Touring shown in Sport Red.

HOW BOLD MOVES

The Sport Touring brings a unique look to Cascada's design details. It's the only trim offered in the exclusive Sport Red exterior color and is paired with an Ebony convertible top. Sport Touring is also available in Summit White and Ebony Twilight Metallic, each with three soft-top color options: Ebony, Malbec and Sweet Mocha. Whichever color combination you choose, your vehicle's look will be enhanced by 20-inch dynamic twin-spoke aluminum wheels with blacked-out pockets. Tailored for the true driving enthusiast, the Sport Touring interior is equipped with alloy sport pedals, a flat-bottom steering wheel and exclusive trim.

SPORT TOURING WITH DARK EFFECTS PACKAGE

The available Dark Effects Package fortifies Sport Touring's athletic personality with distinctive body-color fog lamp accents, a gloss-black grille and mirror caps, rear accent moldings and three exterior color options: Sport Red, Summit White and Ebony Twilight Metallic. Whichever color you choose, it will be paired with the striking Ebony soft top. The Dark Effects Package adds a bold element inside Sport Touring, too, with Piano Black trim and red stitching.



Cascada Sport Touring shown in Summit White with available Dark Effects Package.

Cascada Sport Touring interior shown in Jet Black with available Dark Effects Package.

THE SCIENCE OF SAFETY

With available advanced safety features such as Forward Collision Alert and Lane Departure Warning, you'll feel peace of mind to take on the unpredictable road ahead.

LANE DEPARTURE WARNING Using an onboard camera, available Lane Departure Warning constantly monitors lane markings on the road. If it senses you are moving from your lane without using your turn signal, it gives you a visual and audible alert to help you be aware.

FORWARD COLLISION ALERT This available technology can help you prevent frontal crashes by sensing when you are approaching a detected vehicle in front of you too quickly, alerting you with visual warnings and audible beeps.

PARK ASSIST SENSORS These sensors help take the worry out of pulling your Cascada into or out of parking spaces. Rear Park Assist is standard, while Front Park Assist is available. A standard Rear Vision Camera also helps make backing up a breeze.

ROLLOVER POP-UP BARS Hidden behind the rear seats are high-strength steel pop-up roll bars. When the possibility of a rollover is detected, pop-up bars deploy and are designed to extend nearly 14 inches to approximately the height of the windshield.

Safety or driver assistance features are no substitute for the driver's responsibility to operate the vehicle in a safe manner. The driver should remain attentive to traffic, surroundings and road conditions at all times. Visibility, weather and road conditions may affect feature performance. Read the vehicle Owner's Manual for more important feature limitations and information.



Cascada Premium shown in Rioja Red Metallic with Malbec convertible top and available features.



TECHNOLOGY THAT KEEPS YOU CONNECTED

Cascada helps keep you seamlessly connected and entertained with its suite of available built-in technologies.

NEW BUICK CONNECTED SERVICES With a range of available plans, Buick Connected Services seamlessly links your digital life to your vehicle. Starting with Connected Access,¹ you'll get standard connectivity that enables services in your vehicle. Current services include Vehicle Diagnostics and Buick Smart Driver, which analyze your driving data and give you tips on how to improve your driving habits. Add the Remote Access Plan² to start and stop or lock and unlock a properly equipped vehicle via the available myBuick mobile app.² You can add a monthly data plan to your account at any time that allows you to stay connected on the go with your available in-vehicle 4G LTE Wi-Fi[®] hotspot.³

myBUICK MOBILE APP² Powerful and easy to use, the available myBuick mobile app lets you remotely connect to your vehicle from almost anywhere when you subscribe to Buick Connected Services. When properly equipped, you can unlock and lock your doors, remote-start or -stop your engine and get real-time diagnostics that check your vehicle's fuel status, tire pressure,⁴ mileage and more. The myBuick mobile app is also Apple Watch[®]-compatible, so you can locate your Buick,⁵ remote-start or -stop the engine, honk the horn and flash the lights and get walking directions to where it's parked—all right from your wrist.

BUICK INFOTAINMENT SYSTEM⁶ Play music, make hands-free calls and get text-message alerts and more with the Buick Infotainment System. Voice-recognition and touch-screen technology are seamlessly integrated, so all you have to do to instantly hear your favorite tunes or entertainment is ask for them. Plus, access maps, driving directions and more with standard built-in Navigation,⁷ all through the 7-inch diagonal color touch-screen.

BUILT-IN WI-FI[®] HOTSPOT³ An available built-in Wi-Fi[®] hotspot supports up to seven devices from up to 50 feet away from the vehicle. So your passengers can use their favorite apps to stream movies, watch TV, play games, listen to music and check social media on the go.

¹Standard connectivity available only to original purchaser for 10 years. See onstar.com for details and further plan limitations. Does not include safety services. Connected Access services are subject to change. ²Requires compatible Apple[®] or Android[™] device and data connection. Remote services require paid plan. ³Service varies with conditions and location. Requires active OnStar service and data plan. Data plans provided by AT&T[®]. Vehicle must be on or in accessory position for Wi-Fi[®] to function. ⁴Does not monitor spare tire. ⁵Service varies with conditions. Available in the U.S. only. ⁶Functionality varies by model. Full functionality requires compatible Bluetooth[®] and smartphone, and USB connectivity for some devices. ⁷Map coverage available in the United States, Puerto Rico and Canada.

ONSTAR SAFETY AND SECURITY

As you travel with the ones you care about most, available OnStar^{®1} is with you to empower every moment. With a paid OnStar service plan, you can have a 24/7 lifeline to specially trained Advisors, ready to help if you've been in a crash, your car's been stolen, you're lost or you need Roadside Assistance.²

EMERGENCY HELP WHEN IT MATTERS MOST Using built-in sensors, available Automatic Crash Response³ can connect you to an Emergency Medical Dispatch-Certified Advisor⁴ immediately after a crash to help get you the care you need, even if you can't ask for it. Using Injury Severity Prediction technology, these specially trained Advisors⁴ can notify first responders about the likelihood of serious injury so they can provide help right away. You can feel confident knowing you have a team, 24/7, to get you the assistance you need.

SECURITY YOU CAN COUNT ON If your vehicle is stolen, you can be assured OnStar Advisors are ready to take action with available Stolen Vehicle Recovery. Once a vehicle is reported stolen, OnStar Advisors can work with the police to help recover it. They can use GPS technology to pinpoint its location, slow the vehicle if conditions are safe and even prevent it from being restarted. And with available Theft Alarm Notification,⁵ if your vehicle alarm sounds, we can let you know via text, email or a phone call. One simple call puts a team into action to help recover your vehicle quickly and safely.

OnStar service plans and Connected Services have changed significantly. While many of the offered services are the same, available plans and pricing are different. Visit onstar.com to review all the details and limitations.

¹Visit onstar.com for coverage map, details and limitations. ²Roadside service provided by Allstate Roadside Services. ³OnStar plan, working electrical system, cell service and GPS signal required. OnStar links to emergency services. ⁴OnStar Advisors are certified by the International Academies of Emergency Dispatch. ⁵Requires armed GM factory-installed theft-deterrent system. Additional texting and data rates apply.



Cascada Premium shown in Flip Chip Silver Metallic with available features.

FEATURES			
	CASCADE (1SV)	PREMIUM	SPORT TOURING
● STANDARD ○ AVAILABLE — NOT AVAILABLE			
1.6L 4-CYLINDER TURBO ENGINE	●	●	●
6-SPEED AUTOMATIC TRANSMISSION	●	●	●
HIPER STRUT FRONT SUSPENSION	●	●	●
STABILITRAK	●	●	●
AUTOMATIC CONVERTIBLE SOFT-TOP SYSTEM WITH ACOUSTIC AND THERMAL INSULATION	●	●	●
HEAT-REFLECTIVE LEATHER-APPOINTED SEATING	●	●	●
HEATED POWER-ADJUSTABLE FRONT SEATS	●	●	●
HEATED STEERING WHEEL	●	●	●
HID ARTICULATING HEADLAMPS	●	●	●
BUICK INFOTAINMENT SYSTEM ¹ WITH NAVIGATION ² AND 7" DIAGONAL TOUCH-SCREEN DISPLAY	●	●	●
6 AIRBAGS ³	●	●	●
AUTOMATED ROLLOVER POP-UP BARS	●	●	●
ELECTRONIC SEAT BELT PRESENTER SYSTEM	●	●	●
REAR PARK ASSIST ⁴	●	●	●
BUILT-IN WI-FI ⁵ HOTSPOT	○	○	○
FRONT PARK ASSIST ⁴	—	●	●
AIR DEFLECTORS	—	●	●
RAINSense WIPERS	—	●	●
LANE DEPARTURE WARNING ⁴	—	●	●
FORWARD COLLISION ALERT ⁴	—	●	●
FLAT-BOTTOM LEATHER-WRAPPED STEERING WHEEL	—	—	●
SPORT ALLOY PEDALS	—	—	●

PACKAGES			
	CASCADE (1SV)	PREMIUM	SPORT TOURING
● STANDARD ○ AVAILABLE — NOT AVAILABLE			
DARK EFFECTS PACKAGE: • Red stitching on the seats, door and instrument panel • Piano Black trim decor on the door, center stack and instrument panel • Body-color fog lamp accents and rear accent moldings • Gloss-black mirror caps and grille • Requires Ebony convertible top and Jet Black interior. Available in Summit White, Ebony Twilight Metallic and Sport Red exterior colors.	—	—	○

¹Functionality varies by model. Full functionality requires compatible Bluetooth® and smartphone, and USB connectivity for some devices. ²Map coverage available in the United States, Puerto Rico and Canada. ³A NOTE ON CHILD SAFETY: Always use seat belts and the correct child restraint for your child's age and size, even with airbags. Even in vehicles equipped with the Passenger Sensing System, children are safer when properly secured in a rear seat in the appropriate infant, child or booster seat. Never place a rear-facing infant restraint in the front seat of any vehicle equipped with an active frontal airbag. See your vehicle Owner's Manual and child safety seat instructions for more safety information. ⁴Read the vehicle Owner's Manual for important feature limitations and information. ⁵Service varies with conditions and location. Requires active OnStar service and data plan. Data plans provided by AT&T®. Visit onstar.com for system limitations. ⁶Cargo and load capacity limited by weight and distribution.

DIMENSIONS (INCHES)		CAPACITIES	
Wheelbase	106.1	Head room, front	37.8
Overall length	184.9	Head room, rear	36.1
Body width	79.5	Shoulder room, front	54.6
Overall height	56.8	Shoulder room, rear	45.8
Track width, front	62.5	Leg room, front	42.2
Track width, rear	62.5	Leg room, rear	32.8
		Engine Type	1.6L 4-cylinder Turbo
		Horsepower	200 hp @ 5500 rpm
		Torque	207 lb-ft @ 1800-4500 rpm
		EPA-estimated mpg	21 city/29 hwy
		Cargo Capacity, Top Up (cu. ft.) ⁶	13.4
		Cargo Capacity, Top Down (cu. ft.) ⁶	9.8



EXTERIOR COLORS



Summit White



Ebony Twilight Metallic¹



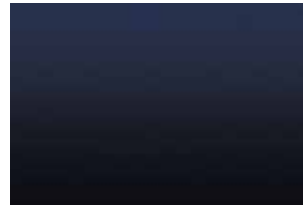
Rioja Red Metallic²



Smoked Pearl Metallic³



Flip Chip Silver Metallic²



Dark Moon Blue Metallic³



Sport Red⁴

¹Not available on Cascada (1SV). Additional charge, premium paint on Premium.
²Not available on Cascada (1SV) and Sport Touring. Additional charge; premium paint.
³Not available on Sport Touring. Additional charge; premium paint.
⁴Not available on Cascada (1SV) and Premium.

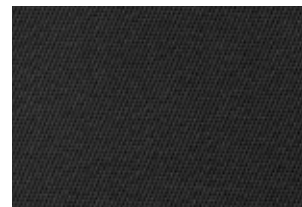
CONVERTIBLE TOP COLORS



Malbec^{5,6}
 Available on Rioja Red Metallic, Summit White and Ebony Twilight Metallic.



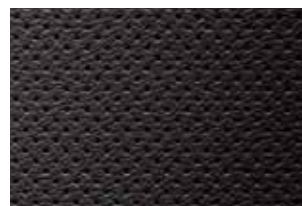
Sweet Mocha⁵
 Available on Summit White, Ebony Twilight Metallic and Dark Moon Blue Metallic.



Ebony
 Available on all exterior colors.

⁵Not available on Cascada (1SV).
⁶Not available with Light Neutral interior on Summit White or Ebony Twilight Metallic.

INTERIOR COLORS



Jet Black Perforated Leather-Appointed Seating⁷



Light Neutral Perforated Leather-Appointed Seating^{7,8}



Jet Black Perforated Leather-Appointed Seating With Red Stitching⁹

Jet Black accents included with all interior colors.

⁷Not available with Dark Effects Package.
⁸Available on Premium and Sport Touring models only.
⁹Requires Dark Effects Package.

WHEELS



20" Diamond Graphic Twin-Spoke Bi-Color Finish Standard on Cascada (1SV). Available on Premium.



20" Dynamic Twin-Spoke Bi-Color Finish Standard on Premium.



20" Dynamic Twin-Spoke With Blacked-Out Pockets Exclusive to Sport Touring.



IMPORTANT WORDS

We have tried to make this catalog comprehensive and factual. We reserve the right, however, to make changes at any time, without notice, in prices, colors, materials, equipment, specifications, models and availability. Specifications, dimensions, measurements, ratings and other numbers in this catalog and other printed materials provided at the dealership or affixed to vehicles are approximations based on design and engineering drawings, prototypes and laboratory tests. Your vehicle may differ due to variations in manufacture and equipment. Since some information may have been updated since the time of printing, please check with your Buick dealer for complete details. Buick reserves the right to lengthen or shorten the model year for any product for any reason, or to start and end model years at different times. Certain vehicle features may lose their usefulness over time due to obsolescence from technological changes. Unless otherwise noted, all claims based on GM Mid-Car Convertible segment and the latest available competitive information. Excludes other GM vehicles.

NEW-VEHICLE LIMITED WARRANTY This warranty is for GM vehicles registered in the USA. See your Buick dealer for terms and conditions.

4 years/50,000 miles (whichever comes first): Bumper-to-Bumper Limited Warranty. The entire vehicle is warranted for repairs, including parts and labor, to correct defects in materials or workmanship. The warranty covers towing to the nearest Buick dealership, and there is no deductible for warranty repairs during the warranty period. The warranty transfers automatically with vehicle ownership during the warranty period.

6 years/70,000 miles (whichever comes first): Transferable Powertrain Limited Warranty plus Roadside Assistance and Courtesy Transportation.

6 years/100,000 miles (whichever comes first): Body and sheet metal components are warranted against rust-through corrosion.

AN IMPORTANT NOTE ABOUT ALTERATIONS AND WARRANTIES Installations or alterations to the original equipment vehicle (or chassis) as distributed by General Motors are not covered by the General Motors New-Vehicle Limited Warranty. The special body company, assembler, equipment installer or upfitter is solely responsible for warranties on the body or equipment and any alterations (or any effect of the alterations) to any of the parts, components, systems or assemblies installed by GM. General Motors is not responsible for the safety or quality of design features, materials or workmanship of any alterations by such suppliers.

ASSEMBLY Buick vehicles and their components are assembled or produced by different operating units of General Motors, its subsidiaries or suppliers to GM worldwide. We sometimes find it necessary to produce Buick vehicles with different or differently sourced components than originally scheduled. Since some options

may be unavailable when your vehicle is assembled, we suggest that you verify that your vehicle includes the equipment you ordered or, if there are changes, that they are acceptable to you.

ENGINES Buick products are equipped with engines produced by GM Powertrain or other suppliers to GM worldwide. The engines in Buick products may also be used in other GM makes and models.

TRAILERING AND OFF-ROAD DRIVING INFORMATION Please go to buick.com and carefully review the vehicle Owner's Manual for important safety information about trailering or off-road driving in your vehicle.

ONSTAR AND BUICK CONNECTED SERVICES Connected vehicle services require a paid connected vehicle services plan or trial, connected hardware, vehicle electrical system (including battery), wireless service and GPS satellite signal to be available and operating for features to function properly. OnStar acts as a link to existing emergency service providers. Visit onstar.com for coverage map, details and system limitations.

A NOTE ON CHILD SAFETY Always use seat belts and the correct child restraint for your child's age and size, even with airbags. Even in vehicles equipped with the Passenger Sensing System, children are safer when properly secured in a rear seat in the appropriate infant, child or booster seat. Never place a rear-facing infant restraint in the front seat of any vehicle equipped with an active frontal airbag. See your vehicle Owner's Manual and child safety seat instructions for more safety information.

FLEET ORDERS Some standard content may be deleted with fleet orders. See dealer for details.

GMMOBILITY.COM (1-800-323-9935) GM Mobility offers financial assistance for eligible adaptive equipment to make automotive travel easier for persons with disabilities or special transportation needs. To learn more about special GM Mobility offers, visit gmmobility.com.

GM, the GM logo, Buick, the Buick emblem, OnStar, the OnStar emblem and the slogans, emblems, vehicle model names, vehicle body designs and other marks appearing in this catalog are the trademarks and/or service marks of General Motors, its subsidiaries, affiliates or licensors. Sirius, XM and all related marks and logos are trademarks of SiriusXM Radio, Inc. The Facebook logo is a trademark of Facebook, Inc. The Twitter logo is a trademark of Twitter, Inc. Android, Android Auto, Google Play, YouTube and other marks are trademarks of Google LLC. Apple CarPlay, Siri, iPhone and iTunes are trademarks of Apple, Inc. The Instagram logo is a trademark of Instagram, Inc. ©2018 General Motors. All rights reserved.

To learn more about why Certified Service is the perfect companion for your Cascada, visit mycertifiedservice.com.