



National Fuel[®]

Empire North Project Overview

Jackson Public Information Session

Jan. 4, 2018

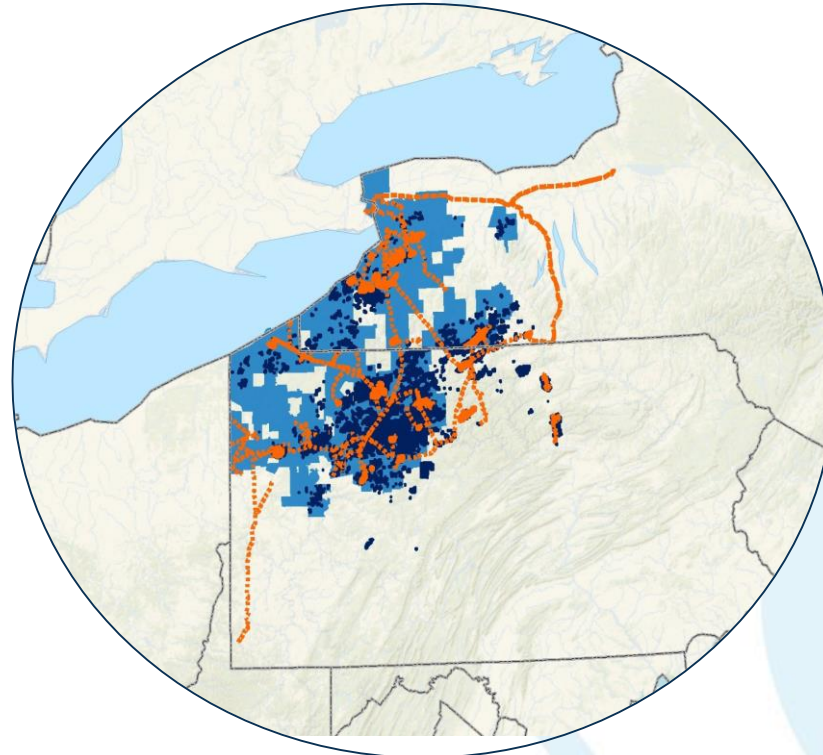
The Company

NFG is the only large, diversified public energy company headquartered in Williamsville, N.Y. and Erie, Pa.

2,080 Full-Time Employees Across All Divisions

1,017 Union Employees

2,274 Retirees



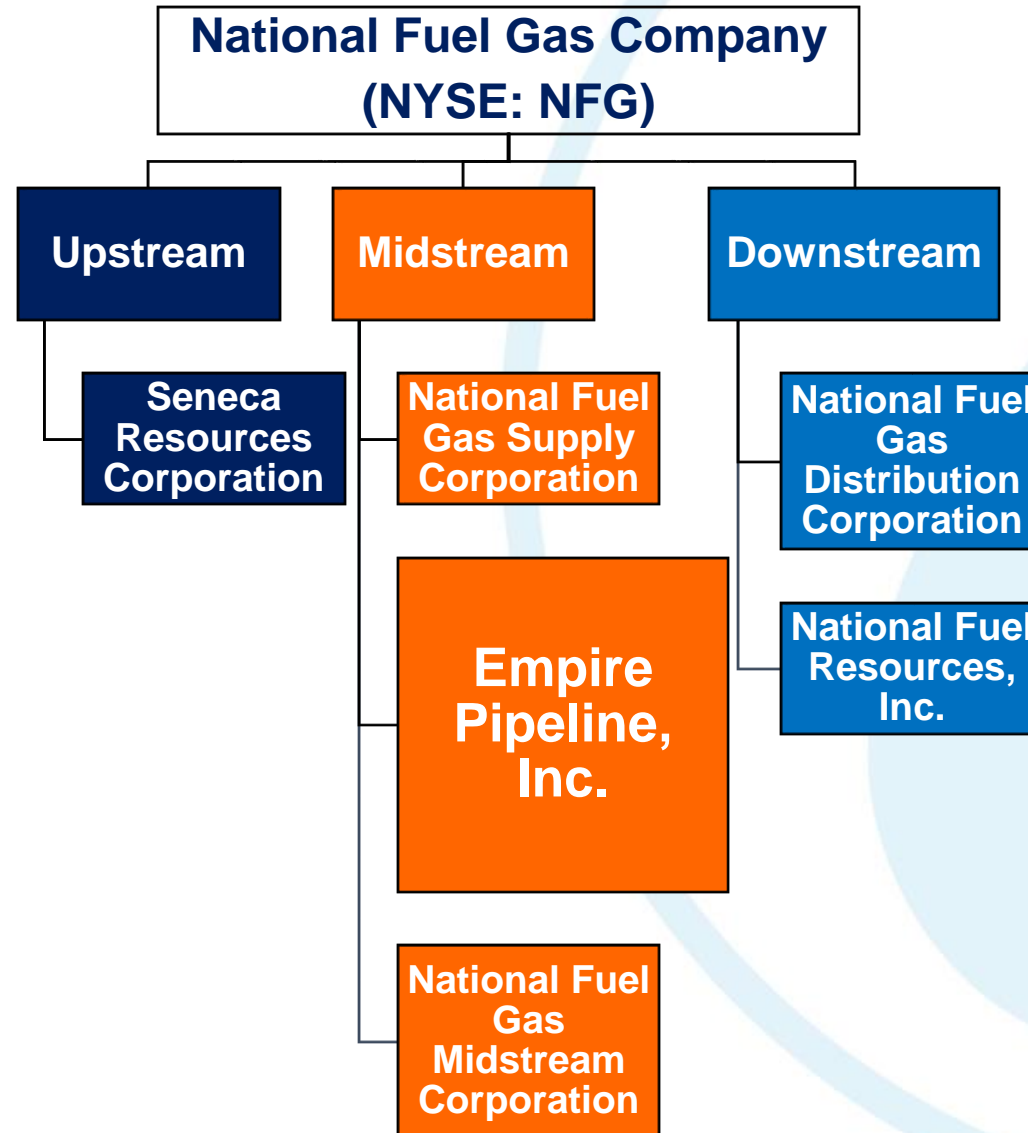
\$5.5 Billion Investments in N.Y. & Pa. since 2008

742,000 Utility accounts served
1.2 million people N.Y.
.5 million people Pa.

18 N.Y. Counties
23 Pa. Counties
Utility & Midstream footprint

Our employees and retirees work, live and raise families in our operational footprint.

Company Structure

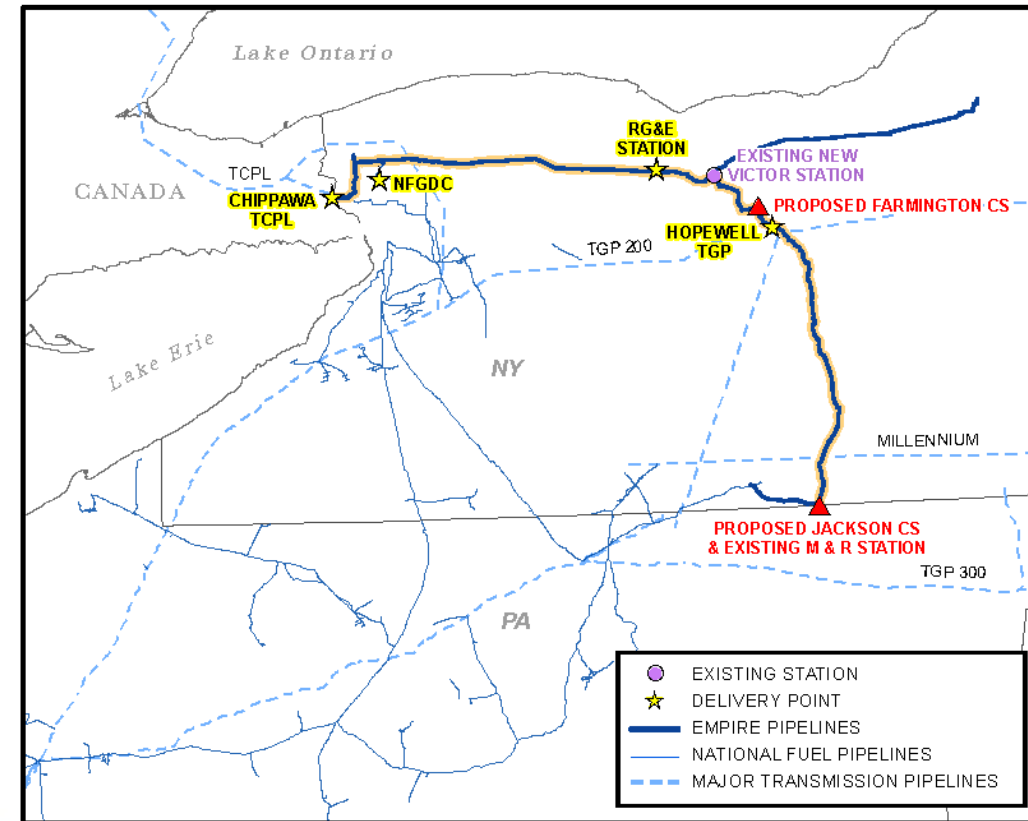


History of Empire Pipeline

- Empire Pipeline transports natural gas to more than 1 million residential and major industrial companies, utilities and power producers in western and central New York and is an interstate pipeline regulated by the Federal Energy Regulatory Commission (FERC).
- Originally constructed in 1993, Empire Pipeline initially was a 157-mile natural gas pipeline, running from near Buffalo to Syracuse.
- In 2008 Empire Pipeline expanded the pipeline's route by approximately 77 miles through the Empire Connector Project.
- November 2011, the 15-mile Tioga County Extension was completed, extending the Empire Connector to producer gathering systems located in Jackson, Pa.
- In 2015, the Tuscarora Lateral Project connected a gas storage field and compressor station in Tuscarora, N.Y. with the existing Empire Pipeline. This project made available much needed extra volumes of natural gas for Upstate New Yorkers.

Empire North Project

- This is a Federal Energy Regulatory Commission (FERC) jurisdictional project
- Increasing capacity of **existing** modern pipeline system
- Target In-Service: November 2019
- System: Empire Pipeline, Inc.
- Estimated Cost: \$141 million
- Pa. Facilities:
 - 21,068 HP Natural Gas Fired Turbine Driven Compressor Station (Jackson, Pa.)
 - Modification to existing Jackson Meter and Regulator Station



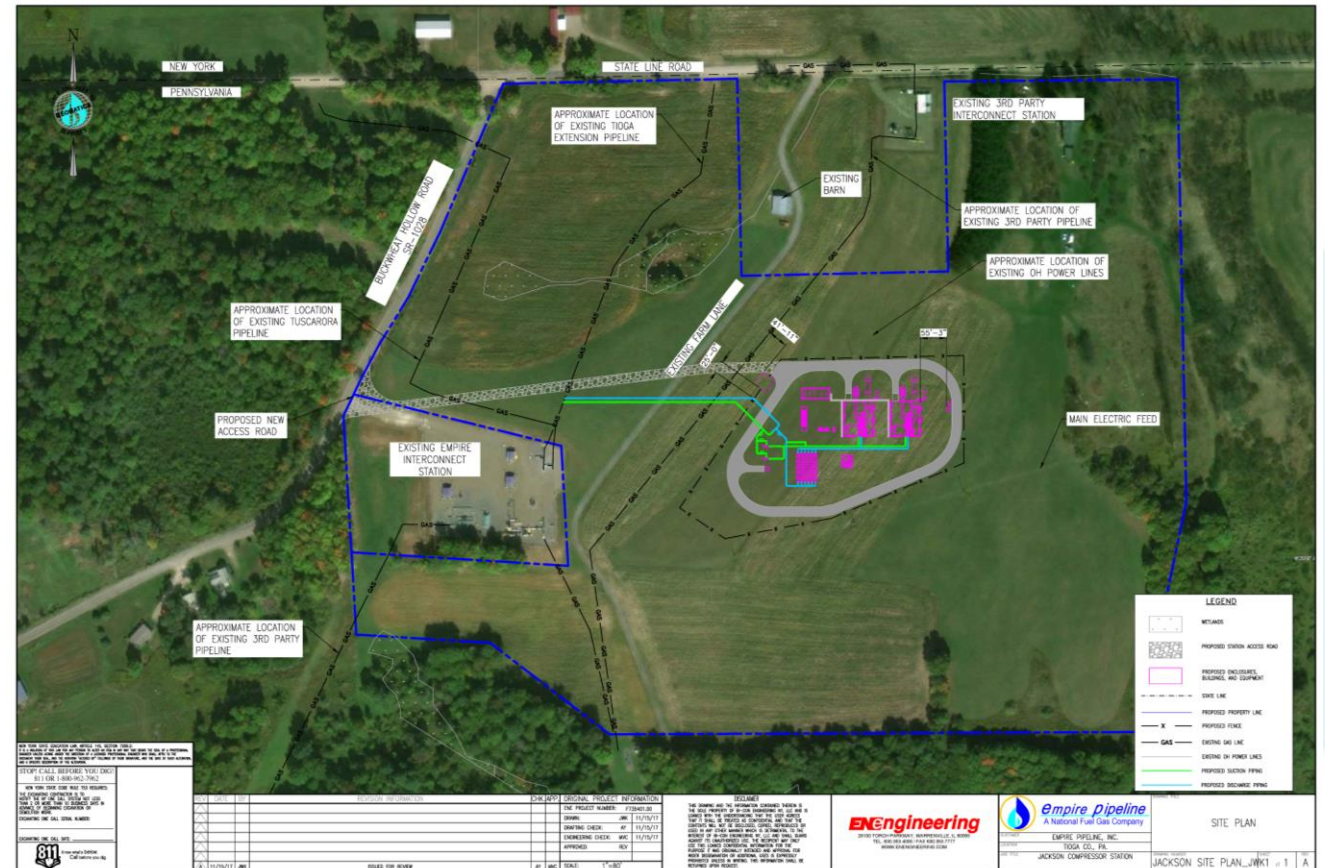
Jackson Compressor Station

Location: Jackson, Pa.

- 42.2 acre parcel
- Compressor Station located approximately 595' from State Line Road and approximately 710' from Buckwheat Hollow Road SR-1028
- Adjacent to existing Empire Interconnect Station with natural gas producer infrastructure.
- Follow county SALDO requirements

Description of Facility

- Two (2) 10,534 HP natural gas fired turbine driven compressor packages housed in sound insulated buildings
- Vent gas recovery and air compressor
- Ancillary equipment



Compressor Station: *Minimizing Impacts*

JACKSON

- Commitment to low noise: Minimal to no increase over ambient noise levels at closest residences
 - ✓ Low noise exhaust and air intake system
 - ✓ Acoustically designed compressor buildings with sound suppression
 - ✓ Low noise auxiliary equipment
 - ✓ Extensive utilization of below grade piping
 - ✓ Low noise station and vent gas silencing
 - ✓ Sound insulation at existing M&R station
- Commitment to: Low Emissions
 - SoLoNOx
 - Oxidation catalyst
 - Vent gas recovery



Hinsdale Compressor Station, Hinsdale, NY (Cattaraugus County)

Compressor Station: *Minimizing Impacts*

- Commitment to no perceived increase in vibration
- Commitment to minimal, functional facility lighting
- Commitment to aesthetic architectural building treatment
- Commitment to aesthetic/acoustic landscaping, including the use of berms and plantings



Station can be Designed to Respect Agricultural Heritage



For Discussion Purposes Only

Safety

- Commitment to meet or beat all federal safety codes for design and operation
- Commitment to community outreach and dialogue
- INGAA Commitments

FERC Review Process

- The Federal Energy Regulatory Commission (FERC) is an independent federal regulatory agency within the U.S. Department of Energy.
- Under the federal Natural Gas Act, FERC has exclusive jurisdiction over the environmental review, including the siting, of interstate natural gas pipeline facilities, such as the proposed Jackson Compressor Station.
- As part of FERC's review of Empire's application for approval to construct and operate the Empire North Project, FERC will undertake a detailed analysis of potential environmental impacts related to the proposed facilities. This will include a robust review of the following:
 - **Cultural Resources**
 - **Geology**
 - **Soils**
 - **Vegetation and Wildlife**
 - **Land Use**
 - **Alternatives**
 - **Aquatic Resources**
 - **Air Quality and Noise**

FERC Review Process

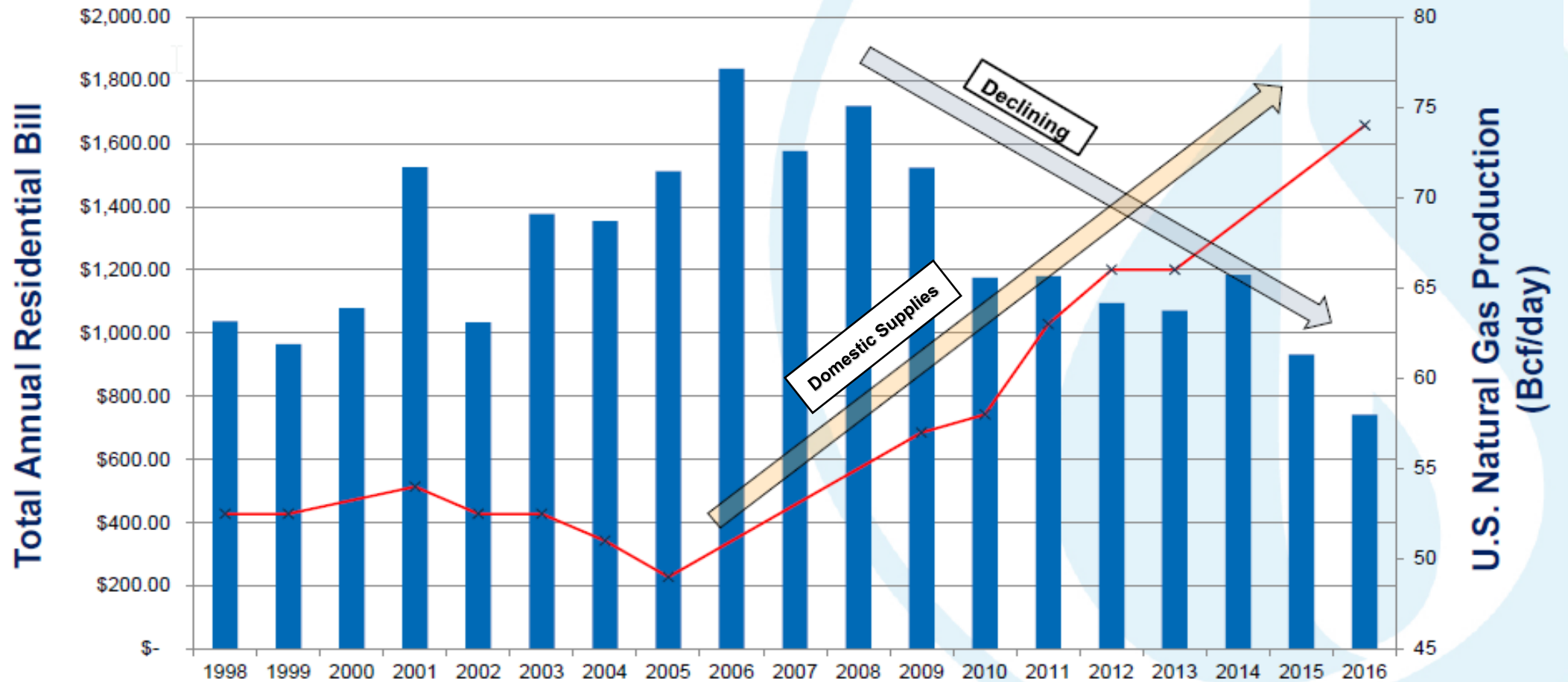
- Upon completion of a thorough environmental analysis, FERC will issue an environmental assessment, which will be an integral part of FERC's decision on whether to approve the proposed project.
- FERC's environmental assessments typically recommend various mitigation measures, which are included to ensure that the project facilities do not significantly affect the quality of the human environment.
 - Will be inclusive of commitments made by company

Empire North Project Investment

- ~\$141 million overall expected cost
- ~\$76 million in New York
- ~\$65 million in Pennsylvania
- Local Benefits
 - Construction Jobs
 - Increased business during construction and operation for local businesses

Northeast Supplies Benefits Consumers

Average Annual Customer Bill (Weather Adjusted) vs Total Natural Gas Production



Twelve months ending September 2016

Extensive Planned Project Outreach

PROPOSED TIMELINE

Empire Informational Sessions	November 2017/January 2018
Empire Submits Section 7(c) Application	January 2018
Commission Issues Certificate of Public Convenience and Necessity	January 2019
Empire Submits the Implementation Plan	February 2019
Empire Commences Construction Upon Receipt of Authorization	February 2019
Project Facilities Placed Into Service	November 2019

Contact Us

Carly M. Manino

Corporate Communications

CorpComm@natfuel.com

1-800-458-0413, Ext. 4199