



Nissan Intelligent Mobility moves you one step ahead. In cars that feel like an extension of you, helping you see more and sense more, reacting with you, and sometimes even for you. Nissan Intelligent Mobility is about a better future - moving us to a world that's safer, more sustainable, and exciting.



2019  
MICRA®



<sup>1</sup>Nissan Micra Cup™ offered in Ontario and Quebec. <sup>2</sup>Availability of specific features is dependent upon the phone's Bluetooth® support. Please refer to your phone Owner's Manual for details. Bluetooth® word mark and logos are owned by Bluetooth SIG, Inc., and any use of such marks by Nissan is under licence. <sup>3</sup>Driving is serious business and requires your full attention. If you have to use the connected device while driving, exercise extreme caution at all times so full attention may be given to vehicle operation. <sup>4</sup>Cargo shown for display purposes only. Cargo and load capacity limited by weight and distribution. Always secure cargo. <sup>5</sup>Available feature. <sup>6</sup>RearView Monitor may not detect every object and does not eliminate blind spots or warn of moving objects. See Owner's Manual for safety information. <sup>7</sup>Extra cost option. <sup>8</sup>See your Nissan Dealership and read the actual limited warranty. <sup>9</sup>Whichever occurs first. <sup>10</sup>Brake Assist cannot prevent all collisions and may not provide warning or braking in all conditions. Driver should monitor traffic conditions and brake as needed to prevent collisions. See Owner's Manual for safety information. <sup>11</sup>Airbags are only a supplemental restraint system. Always wear your seat belt. Rear-facing child restraints should not be placed in the front-passenger's seat. All children 12 and under should ride in the rear seat properly secured in child restraints, booster seats, or seat belts according to their size. Airbags will only inflate in certain accidents. See Owner's Manual for safety information. <sup>12</sup>Vehicle Dynamic Control cannot prevent collisions due to abrupt steering, carelessness, or dangerous driving techniques. It should remain on when driving, except when freeing the vehicle from mud or snow. See Owner's Manual for safety information. Bluetooth® is a registered trademark of Bluetooth SIG, Inc. Facebook® is a registered trademark of Facebook, Inc. Instagram® is a registered trademark of Instagram, LLC. iPhone® is a registered trademark of Apple, Inc. All rights reserved. iPhone® or other external device not included. Siri® and Siri® Eyes Free are registered trademarks of Apple, Inc. Twitter® is a registered trademark of Twitter, Inc. YouTube® is a registered trademark of Google LLC. All illustrations, photographs and specifications in this brochure are based on the latest product information. See actual vehicle for complete accuracy. Nissan Canada Inc. reserves the right to make changes at any time, without notice, in prices, colours, materials, equipment, specifications and models, and to discontinue models or equipment. For information on additional options and accessories, contact your Nissan Dealership. Registered trademarks are property of their respective owners. At [nissan.ca](http://nissan.ca), you'll find a way to "build your own Nissan," a dealer locator, and more information about key Nissan support services. The Nissan names, logos, product names, feature names, and slogans are trademarks owned by or licenced to Nissan Motor Co. Ltd. and/or its North American subsidiaries. **Always wear your seat belt, and please drive responsibly.** ©2018 Nissan Canada Inc. All rights reserved.

visit [nissan.ca](http://nissan.ca)



Live boldly with Nissan Micra®. Break away from the pack (and the gas station) with fun-to-drive agility and impressive fuel economy. Say yes to European design, connect with the 177 mm (7") touch-screen display, and shine on with chrome in all the right places. Take pride in the fact that you're driving The Car Guide's "Best Buy" City Car for three years running. The 2019 Nissan Micra. Regardless of your plans, you've made the right choice for today.

VOTED  
**"BEST BUY"**  
City Cars  
Nissan Micra

BY THE **CAR**  
**GUIDE**  
2019

# FROM THE ROAD TO THE TRACK

Nissan Micra® is designed for your everyday life, with outstanding quality, agility and manoeuvrability that makes it extraordinarily fun to drive. These qualities are pushed to their pulse-pounding limit in the Nissan Micra Cup™ racing series.<sup>1</sup> We take the production Micra S MT – the same one you can drive home – add track-ready safety equipment, and put it to the test with redline-pushing excitement that can only be found on the racetrack. The best part? We invite you into the driver's seat.





Nissan Micra® SR shown in Sport Charcoal Cloth.

## CONNECT WITH A TOUCH

The 2019 Nissan Micra® lets you stay connected to your wider world with your smartphone and the 177 mm (7") touch-screen display. Need a question answered? Ask Siri®. Just connect your iPhone® via Bluetooth.<sup>2,3</sup>

## ADAPT IN A SNAP

From end to end, Micra's neat and versatile storage spaces let you keep your car tidy, so storing and retrieving stuff is a piece of cake. No more sliding items or digging for your things. Stash beverages in dedicated holders up front or on your door, and even on the back of the centre console for your rear passengers. Store important items in your glove compartment or the map pockets on the doors. And when you need room for larger items, you can fold down the 60/40 split rear seats at the pull of a lever to create 819.5 L (28.9 cubic feet) of space.<sup>4</sup>





## MICRA® SV FEATURES

Micra SV makes your drive feel like the best part of the day. Gain instant access with keyless remote entry and get a better view with heated power outside mirrors. Enjoy your drive with the Bluetooth® Hands Free Phone System<sup>2,3</sup> and the air conditioning system.<sup>5</sup>

## MICRA SV STYLE PACKAGE

Add a touch of style to your Micra SV. An aerodynamic rear spoiler looks sporty and helps reduce drag, while 15" alloy wheels provide a premium look.



REAR SPOILER



15" ALLOY WHEELS

## SURROUNDED BY A WHOLE NEW SENSE OF CONTROL

The smartphone/USB input means your playlists and podcasts can come along for the ride,<sup>3</sup> while the Bluetooth® Hands Free Phone System lets you take calls with your hands on the wheel and your eyes on the road.<sup>2,3</sup> And top it all off with a standard RearView Monitor that gives you a better look at what's directly behind you, giving you more confidence backing up than ever before.<sup>6</sup>



SMARTPHONE/USB CONNECTIVITY<sup>3</sup>



BLUETOOTH®<sup>2,3</sup>



REARVIEW MONITOR<sup>6</sup>

## MICRA COLOUR STUDIO

Make your Micra truly your own with Nissan's exclusive personalization options. A creative selection of customized exterior features in different colours to mix and match to your heart's content.

Personalize yours at [nissan.ca/micracolourstudio](http://nissan.ca/micracolourstudio)



Nissan has taken care to ensure that the colour swatches presented here are the closest possible representations of actual vehicle colours. Swatches may vary slightly due to the printing process and whether viewed in daylight, fluorescent or incandescent light. Please see the actual colours at your dealer. Nissan Micra Colour Studio accessories may be subject to limited availability.



Coloured Door Handle Finishers

Coloured Mirror Covers

Coloured Lower Door Stripes

Coloured Centre Caps

Coloured Rear Hatch Finishers



## PAINT AND FABRIC



S Charcoal Cloth



SV Upgraded Charcoal Cloth



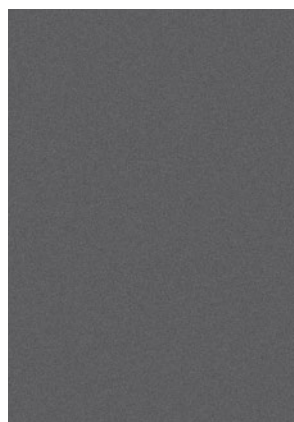
SR Sport Charcoal Cloth

Nissan has taken care to ensure that the colour swatches presented here are the closest possible representations of actual vehicle colours. Swatches may vary slightly due to the printing process and whether viewed in daylight, fluorescent or incandescent light. Please see the actual colours at your dealer.

■ Standard



Fresh Powder QM1



Gun Metallic<sup>7</sup> KAD



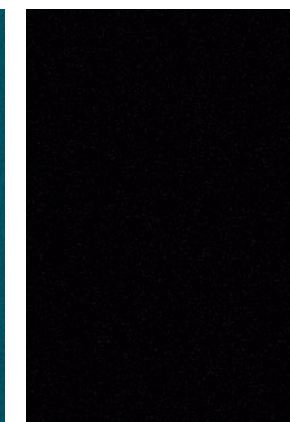
Red Alert A20



Metallic Blue<sup>7</sup> B17



Caspian Sea<sup>7</sup> RBK



Super Black KH3

	S	SV	SR	S	SV	SR
CHARCOAL CLOTH	■			■		
UPGRADED CHARCOAL CLOTH		■			■	
SPORT CHARCOAL CLOTH			■			■

## GENUINE NISSAN ACCESSORIES

Every Genuine Nissan Accessory is: custom-fit, custom-designed and durability-tested; available for finance and backed by Nissan's 3 year/60,000 km Accessories limited warranty when installed by dealer at time of your vehicle purchase.<sup>8</sup>

### A. Chrome Mirror Covers and Door Handle Finishers

Make it pop. (Sold separately)

### B. Rear Roof Spoiler

Sleek, stylish, and sporty.

### C. Rear Bumper Protector and Trunk Sill Protectors

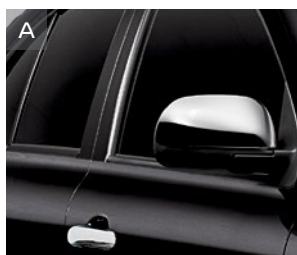
Skip the scratches. (Sold separately)

### D. Stainless Steel Exhaust Finisher

Finish it off with some shine.

Additional Accessories:

- Rear Roof Spoiler
- Chrome Door Mouldings
- Chrome Trunk Accent
- Trunk Mat
- Rear Tonneau Cover
- Under-tonneau Storage
- And More



## BUYING AND OWNING

**Finance Options** Through Nissan Canada Finance, we offer many attractive lease and loan options that can be tailored to your individual needs. We have unique programs such as the Nissan Grad Program, Loyalty Program or the Nissan Advantage Program. Please visit our website [Nissan.ca/finance](http://Nissan.ca/finance) to explore all of the options available. We have also made it easy to pre-qualify online. All of our programs come with competitive rates and terms. With our flexible options, driving home a new Nissan has never been easier. Consult your local Nissan Dealership for complete details.

**No-Nonsense Warranty** Every 2019 Nissan is covered by a 3 year/60,000 km<sup>9</sup> Comprehensive New Vehicle Warranty, a 5 year/100,000 km<sup>9</sup> Powertrain Warranty, an 8 year/130,000 km<sup>9</sup> Emission Control Warranty on selected components, and a 5 year/unlimited km Corrosion Perforation Warranty. As a Nissan owner, you'll also receive a 3 year Roadside Assistance program available to you 24 hours a day. Terms, conditions and exclusions apply. See your Warranty Information Booklet for complete details.

**Added Security Plan (ASP)** For ultimate peace of mind, consider the Nissan Added Security Plan. It's our commitment to be there for you, and to help you leave your worries behind. Different plans, available for both purchased and leased vehicles, let you tailor the coverage to your driving habits.

**Security+Plus™ Prepaid Maintenance Plan** The smart choice when it comes to maintaining your new Nissan. Honoured at all participating Nissan Dealers in Canada and the U.S., your vehicle is cared for by factory-trained technicians using Genuine Nissan Parts. And best of all, there's no worrying about price increases on parts or service in the future. A variety of plans are available. Ask your Dealer for details.

See your Nissan dealer for details, or go to [accessories.nissan.ca](http://accessories.nissan.ca)



## CHOOSE YOUR TRIM LEVEL

### S MT

- 1.6 L DOHC 16-valve 4-cylinder engine (109 HP and 107 lb.-ft. torque)
- 5-speed manual transmission
- Front and rear stabilizer bars
- Front disc/rear drum brakes
- 15" Steel wheels with covers
- Electronic power-assisted steering
- Brake Assist<sup>10</sup> and Electronic Brake force Distribution (EBD)
- 177 mm (7") touch-screen display
- RearView Monitor<sup>6</sup>
- Siri<sup>®</sup> Eyes Free<sup>2,3</sup>
- 4-way adjustable front seats
- Manual windows and door locks
- AM/FM/Aux-in audio system with two speakers
- USB connection port for smartphone interface and other compatible devices<sup>3</sup>
- Illuminated steering wheel-mounted audio controls
- Bluetooth<sup>®</sup> Hands Free Phone System<sup>2,3</sup>
- 60/40 Split fold-down rear seats
- Variable intermittent windshield wipers
- Intermittent rear window wiper
- Speedometer, tachometer, and trip computer
- Carpeted floor mats
- Manual folding/manual operating outside mirrors
- Daytime Running Lights
- Driver and front passenger, side-impact, and curtain airbags<sup>11</sup>
- Lower Anchors and Tethers for Children (LATCH)
- Anti-Lock Braking System (ABS)
- Vehicle Dynamic Control (VDC)<sup>12</sup> and Traction Control System (TCS)
- Nissan Vehicle Immobilizer System



### S AT INCLUDES S MT EQUIPMENT PLUS:

- 4-speed automatic transmission
- Steering wheel with silver accents
- Shift knob with silver accent
- Cruise control with illuminated steering wheel-mounted controls
- Air conditioning system

### SV INCLUDES S MT EQUIPMENT PLUS:

- 4-speed automatic transmission
- Heated power outside mirrors
- Body-colour outside door handles
- Shift knob with silver accent
- Air conditioning system
- Chrome inside door handles
- Four speakers
- Power windows with driver's one-touch auto-down feature
- Power door locks with auto-locking feature
- Remote keyless entry
- 6-way driver's seat
- Cloth front door trim accent



### KEY AVAILABLE PACKAGE:

Style Package

### SR INCLUDES SV EQUIPMENT PLUS:

- 16" Machined alloy wheels
- Front fog lights with chrome finisher
- Front fascia lower grille chrome finisher
- Leather-wrapped steering wheel
- Sport front headlights and rear taillights
- Side sill spoilers
- Body-colour rear spoiler with LED centre high-mounted stoplight
- Exhaust tip finisher
- Upgraded centre stack with Matte Black finish and refined HVAC control
- Sport cloth-appointed seats with contrast stitching



Nissan Micra<sup>®</sup> SR shown in Caspian Sea with white Colour Studio accents.

## SPECIFICATIONS

Engine	S	SV	SR
HR16DE – 1.6-litre DOHC 16-valve 4-cylinder engine	■	■	■
– Horsepower – 109 HP @ 6000 rpm			
– Torque – 107 lb.-ft. @ 4400 rpm			
Emissions – Tier 2-Bin 5 (EPA); LEV2-ULEV (CARB)	■	■	■
Dual injector system	■	■	■
Continuously Variable Valve Timing Control System (CVTCS) on intake and exhaust valves	■	■	■
Nissan Direct Ignition System	■	■	■
Platinum-tipped spark plugs	■	■	■
Electronic drive-by-wire throttle	■	■	■

Drivetrain	S	SV	SR
Front engine/Front-Wheel Drive	■	■	■
5-speed manual transmission	■		
4-speed automatic transmission	□	■	■

Brakes	S	SV	SR
Vented front disc/rear drum brakes	■	■	■
4-wheel Anti-lock Braking System (ABS)	■	■	■
Electronic Brake force Distribution (EBD)	■	■	■
Brake Assist <sup>10</sup>	■	■	■

Suspension/Steering	S	SV	SR
Independent strut front suspension with stabilizer bars	■	■	■
Torsion beam rear axle with integrated stabilizer bar	■	■	■
Vehicle-speed-sensitive electric power steering	■	■	■

Wheels/Tires	S	SV	SR
15" x 5.5" steel wheels with wheel covers	■	■	
15" x 5.5" aluminum-alloy wheels		SP	
16" x 6.0" machined alloy wheels			■
P185/60R15 all-season tires	■	■	
P185/55R16 all-season tires			■

Exterior Features	S	SV	SR
Sport headlights and taillights			■
Fog lights			■
Black outside mirrors and door handles	■		
Body-colour power heated outside mirrors		■	■
Body-colour door handles		■	■
Chrome accents			■
Side sill spoilers			■
Body-colour rear spoiler with LED centre high-mounted stoplight		SP	■
Chrome exhaust finisher			■

Comfort/Convenience	S	SV	SR
177 mm (7") touch-screen display	■	■	■
RearView Monitor <sup>6</sup>	■	■	■
Siri <sup>®</sup> Eyes Free <sup>2,3</sup>	■	■	■
Bluetooth <sup>®</sup> Hands Free Phone System <sup>2,3</sup>	■	■	■
Trip computer (average fuel economy, current fuel economy, distance to empty)	■	■	■
Air conditioning	AT	■	■
Heater ducts under front seats	■	■	■
Integrated Key with remote keyless entry		■	■
Power door locks with auto-locking feature		■	■
Power windows with driver's window one-touch auto-down		■	■
Tilt steering column	■	■	■
Cruise control with illuminated steering wheel-mounted controls	AT	■	■
Variable intermittent windshield wipers	■	■	■
Intermittent rear window wiper	■	■	■
Rear window defroster	■	■	■
Front overhead light	■	■	■
Cargo area light	■	■	■
Sun visors (passenger visor with vanity mirror)	■	■	■
Front door map pockets with bottle holders	■	■	■
Front cup holders in centre console	■	■	■
Rear cup holder in centre console	■	■	■
Passenger's side assist grip		■	■
Digital clock	■	■	■
Auxiliary 12-volt DC power outlet	■	■	■
Battery saver	■	■	■

Seating/Appointments	S	SV	SR
4-way manual driver's seat	■		
6-way manual driver's seat		■	■
Driver's seat armrest		■	■
60/40 Split fold-down rear seats	■	■	■
Cloth seat trim	■		
Upgraded cloth seat and door trim		■	
Sport cloth seat and door trim			■
Leather-wrapped steering wheel			■
Shift knob with silver accent	□	■	■
Black inside door handles	■		
Chrome inside door handles		■	■
Carpeted floor mats	■	■	■

Audio/Entertainment	S	SV	SR
AM/FM/Aux-in audio system with two speakers	■		
Four speakers		■	■
Auxiliary audio input jack <sup>3</sup>	■	■	■
USB connection port for smartphone interface and other compatible devices <sup>3</sup>	■	■	■
Radio Data System (RDS)	■	■	■
Speed-sensitive volume control	■	■	■
Illuminated steering wheel-mounted audio controls	■	■	■

Safety/Security	S	SV	SR
Nissan Advanced Airbag System with dual-stage supplemental front airbags with seat belt and occupant-classification sensors <sup>11</sup>	■	■	■
Driver and front-passenger seat-mounted side-impact supplemental airbags <sup>11</sup>	■	■	■
Roof-mounted curtain side-impact supplemental airbags for front- and rear-seat outboard occupant head protection <sup>11</sup>	■	■	■
Vehicle Dynamic Control (VDC) <sup>12</sup> with Traction Control System (TCS)	■	■	■
3-point ALR/ELR passenger seat belt system (ELR for driver)	■	■	■
Front seat belts with pre-tensioners and load limiters	■	■	■
Height-adjustable front head restraints	■	■	■
Rear outboard head restraints	■	■	■
LATCH System (Lower Anchors and Tethers for CHildren)	■	■	■
Zone Body construction with front and rear crumple zones	■	■	■
Hood buckling creases and safety stops	■	■	■
Energy-absorbing steering column	■	■	■
Pipe-style steel side-door guard beams	■	■	■
Immobilizer Key System	■	■	■

## PACKAGE

### <sup>SP</sup> SV Style Package

- Body-colour rear spoiler with LED centre high-mounted stoplight
- 15" Aluminum-alloy wheels

## DIMENSIONS/CAPACITIES/WEIGHTS/FUEL

Dimensions	
<b>Exterior – mm (inches)</b>	
Wheelbase	2450 (96.5)
Overall length	3827 (150.7)
Overall width	1665 (65.6)
Overall height	1527 (60.1)
Track width (front/rear)	1460 (57.5)/1465 (57.7)

Aerodynamics – Cd	
Drag coefficient	0.315
<b>Interior (front/rear) – mm (inches)</b>	
Head room	1033 (40.7)/976 (38.4)
Leg room	1051 (41.4)/860 (33.9)
Hip room	1217 (48.0)/1240 (48.8)
Shoulder room	1295 (51.0)/1269 (50.0)

Capacities	
Seating capacity	5
Interior passenger volume – L (cu. ft.)	2472 (87.3)
Cargo volume with rear seats up – L (cu. ft.)	408 (14.4)
Cargo volume with rear seats folded – L (cu. ft.)	819 (28.9)
Fuel tank – L (Imp. gal.)	41.0 (9.0)

Curb Weights – kg (lbs.)	S	SV	SR
<b>Base Total</b>			
Manual transmission	1044 (2302)	–	–
Automatic transmission	1064 (2346)	1067 (2353)	1081 (2384)

### 2019 Fuel Consumption Estimates – L/100 km (MPG)

City/Highway	
Manual transmission	8.7 (32)/6.8 (42)
Automatic transmission	9.0 (31)/6.8 (42)

– Actual mileage may vary with driving conditions – use for comparison only.

■ Standard  
□ Optional

AT Automatic Transmission Models Only  
SP Part of SV Style Package

## NISSAN MICRA<sup>®</sup>

Isn't it time you were passionate about the car you drive?

Welcome to the 2019 Micra.

Follow Nissan Canada on:



Nissan's environmental action plan focuses on several key areas. In addition to increasing production of Zero Emission vehicles like the 100% electric LEAF<sup>®</sup>, we're improving fuel efficiency across our lineup, and reducing the environmental impact of manufacturing through energy-efficient practices in our plants.

