



Nissan Intelligent Mobility moves you one step ahead. In cars that feel like an extension of you, helping you see more and sense more, reacting with you, and sometimes even for you. Nissan Intelligent Mobility is about a better future – moving through life with greater confidence, excitement and connection to the world around you.



2021
NV200®
COMPACT
CARGO

NISSAN NV200® COMPACT CARGO

Isn't it time you were passionate about the vehicle you drive?

Welcome to the 2021 NV200 Compact Cargo.

Follow Nissan Canada on:



All 2021 NV200 Compact Cargos feature standard splash guards (not shown in photography).

Facebook® is a registered trademark of Facebook, Inc. Twitter® is a registered trademark of Twitter, Inc. YouTube® is a registered trademark of Google LLC. Instagram® is a registered trademark of Instagram, LLC. All illustrations, photographs and specifications in this brochure are based on the latest product information. See actual vehicle for complete accuracy. Nissan Canada Inc. reserves the right to make changes at any time, without notice, in prices, colours, materials, equipment, specifications and models, and to discontinue models or equipment. For information on additional options and accessories, contact your Nissan Dealership. Registered trademarks are property of their respective owners. At nissan.ca, you'll find a way to "build your own Nissan," a dealer locator, and more information about key Nissan support services. The Nissan names, logos, product names, feature names, and slogans are trademarks owned by or licenced to Nissan Motor Co. Ltd. and/or its North American subsidiaries. Always wear your seat belt, and please drive responsibly. Catalogue number: 99999-NV20021EN. ©2020 Nissan Canada Inc. All rights reserved.

visit nissan.ca

NISSAN Commercial Vehicles®



Right from the beginning, you know the 2021 NV200® Compact Cargo is the smart way to do business. With loads of room and the option to be easily upfitted it's clearly a capable hauler. Nimble and efficient, it's great for tight quarters and tight budgets. And with advanced technology along for the ride, you minimize wasted time while maximizing driver comfort. Try one on. We think you'll find it's the perfect size.

CANADA'S BEST COMMERCIAL VAN LIMITED WARRANTY
5 YEARS/160,000 KILOMETRES¹
COMPREHENSIVE LIMITED WARRANTY

Going above and beyond is the Nissan way. After passing all of the brutal quality and durability testing we can think of, we're sure you'll have a van you can count on. To prove our confidence and our commitment, we are pleased to offer Canada's Best Commercial Van Limited Warranty. A comprehensive limited warranty for 5 years or 160,000 kilometres, whichever comes first. And that means we've got your back, so you can keep moving forward. For more details of the limited warranty, please go to nissan.ca or ask your Nissan Dealer.¹

¹Nissan's Vehicle Limited Warranty basic coverage excludes tires, corrosion coverage and emission performance and defect coverage (applicable coverage is provided under other separate warranties). Other general exclusions and terms and conditions also apply. For complete information concerning coverage, conditions and exclusions, see your Nissan dealer and read the actual Vehicle Limited Warranty booklet. Warranty claim is current at time of printing.



Heat Chamber



Wagon Track



High-Speed Oval



Belgian Block



Salt Spray Tunnel



Fixed Stone

Over **852000⁴** kilometers and 6,600 quality and durability tests

One unshakeable commitment. Fanatical? Maybe. But when it comes to making the toughest commercial vans you can buy, we go the extra distance for you. And for Nissan Commercial Vans, it's no Sunday drive. We simulate years of corrosion where we soak a vehicle with salt, bake it, and pound it around a test track. We wreak havoc with suspension and body components by driving through potholes, dips, and over 4 x 4 beams. Special chambers crank up the heat to 62°C and humidity to 95% to break down seals and age interiors.

We even have machines that can simulate nearly any road in the world, and we run our vans on them non-stop for 12 hours, 24 hours, or even more. Do we really need to go to such extremes, just to make a Nissan Commercial Van the best you've ever owned? Yes, because every day, you depend on your van to do your job. That's the motivation for us to do ours.

To see how far we go to create a van you can trust, go to nissan.ca

The Nissan Arizona Testing Centre. Think your drive is tough? Welcome to one of the most challenging places on earth. We test day and night, in scorching heat, freezing cold, on high-speed ovals and in torturous road conditions. But the results are worth it – the most rugged commercial vans you can buy.



Opportunities have never been more accessible. It doesn't take a rocket scientist to figure that easy access to a van's cargo area is vital for a commercial vehicle. That's why the NV200[®] Compact Cargo features two easy-sliding side doors with low step-in heights and an innovative 40/60-split rear door. And with the standard RearView Monitor helping you get close to the curb or loading bay, you can work smarter while maximizing cargo efficiency out of every trip.^{1,2}

¹RearView Monitor may not detect every object and does not eliminate blind spots or warn of moving objects. See Owner's Manual for safety information. ²Cargo shown for display purposes only. Cargo and load capacity limited by weight and distribution. Always secure all cargo. Heavy loading of the vehicle with cargo, especially on the roof, will affect the handling and stability of the vehicle.

Nissan NV200[®] Compact Cargo SV shown in Brilliant Silver with additional upfitting.

Innovation that you can build on

With Nissan Upfit Engineering, NV200[®] Compact Cargo has been designed to let you create a commercial vehicle that is small on the outside, but creates lots of room on the inside. From flat wheel wells to a fold-down passenger seat, every available inch is ready to work - it can easily carry a 40" x 48" pallet. And with integrated interior reinforced cargo-mounting points and integrated roof-mounting points, the NV200 Compact Cargo is an upfitter-friendly base to build your business on!



Fold-down passenger seat helps make room for longer items!



Six floor-mounted² and six wall-mounted D-ring tie-downs!



Integrated reinforced cargo-mounting points allow cargo racks, partitions and bins to be securely mounted! Integrated exterior roof rack-mounting points help secure racks!



122.7 cu. ft
(3,474 Litres)
Cargo Capacity¹



40/60 180°
Opening
Rear Doors



¹Cargo shown for display purposes only. Cargo and load capacity limited by weight and distribution. Always secure all cargo. Heavy loading of the vehicle with cargo, especially on the roof, will affect the handling and stability of the vehicle. ²Available feature.

Fits what you need



Wear-resistant patches

Flexible centre console

Fold-down passenger seat

Deep cup holders

Under-seat sliding drawer

Recessed dashboard tray



U.S. instrumentation shown.

Upwardly mobile office

Thoughtful design of NV200[®] Compact Cargo's cabin makes it a better space for drivers and a smarter place to work. The driver sits high, with excellent outside visibility, and can get a clear view behind with the standard RearView Monitor.¹ And when it's time to get down to business, the NV200 Compact Cargo converts easily into your mobile office. The fold-down passenger seat creates a work desk, while smart storage and power outlets are all within easy reach.² To help you work efficiently on the road, NissanConnect[®] offers a suite of high-tech features that work with your compatible smartphone and help you stay in touch with your customers.³ And it's all easily accessed through a 7" (178 mm) touch-screen display.⁴



Bluetooth[®] Hands Free Phone System – Voice recognition allows you to make and receive calls even when your compatible smartphone is buried in your pocket or in the centre console. No headset, no reaching – just a nice firm grip on the steering wheel.^{2,5}

Apple CarPlay[®] Integration³ – People to see? Places to be? Just ask Siri.[®] Equipped with Siri[®] voice control, Apple CarPlay[®] (shown above) brings on board to your NV200, your contacts, favourite audio apps, Apple Maps, and more. You can even use your steering wheel controls to adjust volume and toggle through screens. Simply plug in your compatible iPhone[®] and go.^{2,3}

Android Auto^{™3} – Know where you're going and when, with Android Auto[™] for your NV200. Google Maps[™] helps you navigate to your next appointment, while Google Assistant keeps you on top of your schedule. Choose a song, change your destination, or respond to a text with your hands on the wheel using the hundreds of available voice commands.^{3,6,7}

RearView Monitor¹ – This feature helps negotiate tight parking situations. It can also help the driver place the vehicle close to unloading points.¹

¹RearView Monitor may not detect every object and does not eliminate blind spots or warn of moving objects. See Owner's Manual for safety information. ²Driving is serious business and requires your full attention. If you have to use the connected device while driving, exercise extreme caution at all times so full attention may be given to vehicle operation. iPhone[®] is a registered trademark of Apple, Inc. All rights reserved. iPhone[®] or other external device not included. ³Available services/features may be shown. Compatible connected device may be required. Only use services/features and device when safe and legal to do so. Subject to GPS and wireless network availability and connection, and system/technology limitations. Text rates/data usage/subscription may apply. Some services/features provided by companies not within Nissan or its partners' or agents' control and may be discontinued at any time. **For more information, see Dealer or Owner's Manual.** ⁴Driving is serious business and requires your full attention. If you have to use the feature while driving, exercise extreme caution at all times so full attention may be given to vehicle operation. ⁵Availability of specific features is dependent upon the phone's Bluetooth[®] support. Please refer to your phone Owner's Manual for details. Bluetooth[®] word mark and logos are owned by Bluetooth SIG, Inc., and any use of such marks by Nissan is under license. ⁶Use the text messaging feature after stopping your vehicle in a safe location. If you have to use the feature while driving, exercise extreme caution at all times so full attention may be given to vehicle operation. Compatible smartphone required. Text rates and/or data usage may apply. ⁷Never program while driving. GPS mapping may not be detailed in all areas or reflect current road status. Apple CarPlay[®] is a registered trademark of Apple, Inc. Google, Android, Android Auto, Google Assistant, Google Maps, and other marks are trademarks of Google LLC. Google Assistant is not available in certain language and countries. iPhone[®] is a registered trademark of Apple, Inc. All rights reserved. iPhone[®] or other external device not included. Siri[®] is a registered trademark of Apple, Inc.

NV200® COMPACT CARGO TRIM BUILD



NV200 S

NV200 S INCLUDES:

- 2.0-litre DOHC 4-cylinder engine
- Xtronic CVT® (Continuously Variable Transmission)
- Hill start assist
- 11.0"/9.0" Brakes front/rear
- 15" Steel wheels
- 185/60R15 All-Season tires
- Black grille
- Power heated outside mirrors
- Six exterior roof rack-mounting points¹
- 40/60-split rear cargo doors
- 180° Maximum opening range for rear cargo doors
- 20 Interior integrated reinforced cargo-mounting points¹
- Six cargo area wall-mounted tie-down D-rings¹
- Three rear cargo lights
- Pre-wiring for telematics upfitting
- Three ceiling-mounted cargo lights
- Rear cargo floor protector
- Front vinyl flooring
- Power windows with one-touch auto-down with auto-reverse
- Power door locks with auto-locking feature
- Cruise control with steering wheel-mounted controls
- Mobile Office Style centre console with storage¹
- Upper dashboard storage bin
- Two cup holders
- 12-volt DC power outlet²
- RearView Monitor³
- Grey cloth seating with vinyl bolster wear patches
- Fold-down passenger's seat with seatback tray table
- Passenger's under-seat slide-out storage tray
- NissanConnect® 178 mm (7") touch-screen display⁴
- Apple CarPlay⁵
- Android Auto⁵
- Bluetooth® Hands Free Phone System⁶
- Hands-free Text Messaging Assistant⁷
- AM/FM audio system
- Streaming Audio via Bluetooth⁶
- SiriusXM® Radio with 3-month subscription included⁸
- USB connection port²
- Six standard airbags⁹

KEY AVAILABLE PACKAGE:

- Rear Door Glass Package



NV200 SV

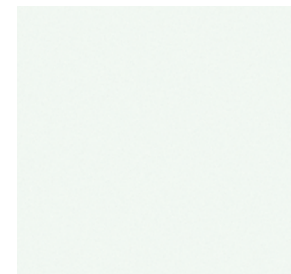
NV200 SV INCLUDES NV200 S EQUIPMENT PLUS:

- Silver-painted grille
- Body-colour rear bumpers
- Body-colour outside mirrors
- Body-colour rear door finisher
- Split 5-spoke wheel covers
- Rear Sonar System¹⁰
- Six floor-mounted D-rings in cargo area¹
- Remote keyless entry
- Additional 12-volt DC power outlet in centre console²

KEY AVAILABLE PACKAGE:

- Rear Door Glass Package

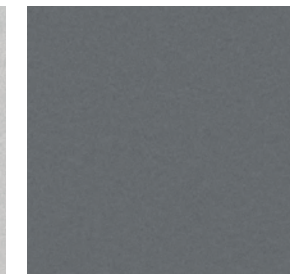
PAINT AND FABRIC



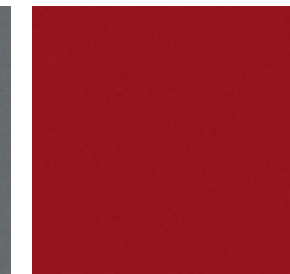
Fresh Powder QM1



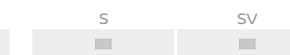
Brilliant Silver¹¹ K23



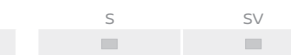
Gun Metallic¹¹ KAD



Cayenne Red¹¹ NAH

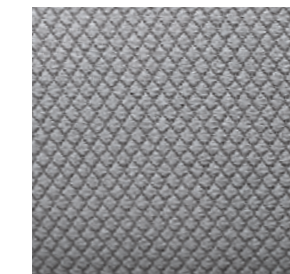


Super Black KH3



MAKE AN IMPRESSION

You've decided which Nissan NV200 Compact Cargo you want, now here comes the best part: choose your favourite colour and decide what it's going to look like.



Grey Cloth

Nissan has taken care to ensure that the digital colour swatches presented here are the closest possible representation of actual vehicle colours. Swatches may vary slightly due to viewing light or screen quality. Please see the actual vehicle and colours at your local Nissan dealer.

Standard

GENUINE NISSAN ACCESSORIES

Every Genuine Nissan Accessory is custom-fit, custom designed and durability-tested. Each one is backed by Nissan's 5-year/160,000-km (whichever occurs first) limited warranty (if installed by dealer at the time of purchase), and can be financed when installed by dealer at time of purchase. Terms, conditions and exclusions apply. See your Warranty Information Booklet for complete details.

A. Portable Cargo Organizer¹

Keep all your tools organized and at the ready.

Additional Accessories:

- All-Season Rubber Floor Mats
- Cargo Hooks Kit¹
- Nissan Valve Stem Caps
- Emergency Road Kit
- First-aid Kit
- And More

B. Rear Bumper Protector

Helps take loads of abuse.

C. Side-Window Deflector

Get some added airflow without all the fuss.

D. Body Side Mouldings

Protect and preserve your NV200 Compact Cargo.



See your Nissan dealer for details, or go to accessories.nissan.ca

BUYING AND OWNING

Finance Options Through Nissan Canada Finance, we offer many attractive lease and loan options that can be tailored to your individual needs. We have unique programs such as the Nissan Grad Program, Loyalty Program or the Nissan Advantage Program. Please visit our website Nissan.ca/finance to explore all of the options available. We have also made it easy to pre-qualify online. All of our programs come with competitive rates and terms. With our flexible options, driving home a new Nissan has never been easier. Consult your local Nissan Dealership for complete details.

No-Nonsense Warranty Every 2021 Nissan is covered by a 5 year/160,000 km¹² Comprehensive New Vehicle Warranty, a 5 year/160,000 km¹² Powertrain Warranty, an 8 year/130,000 km¹² Emission OBD Warranty on selected components, and a 5 year/unlimited km Corrosion Perforation Warranty. As a Nissan owner, you'll also receive a 3 year Roadside Assistance program available to you 24 hours a day. Terms, conditions and exclusions apply. See your Warranty Information Booklet for complete details.

Added Security Plan (ASP) For ultimate peace of mind, consider the Nissan Added Security Plan. It's our commitment to be there for you, and to help you leave your worries behind. Different plans, available for both purchased and leased vehicles, let you tailor the coverage to your driving habits.

Security+Plus™ Prepaid Maintenance Plan The smart choice when it comes to maintaining your new Nissan. Honoured at all participating Nissan Dealers in Canada and the U.S., your vehicle is cared for by factory-trained technicians using Genuine Nissan Parts. And best of all, there's no worrying about price increases on parts or service in the future. A variety of plans are available. Ask your Dealer for details.

¹Cargo shown for display purposes only. Cargo and load capacity limited by weight and distribution. Always secure cargo. Heavy loading of the vehicle with cargo, especially on the roof, will affect the handling and stability of the vehicle. ²Driving is serious business and requires your full attention. If you have to use the connected device while driving, exercise extreme caution at all times so full attention may be given to vehicle operation. ³RearView Monitor may not detect every object and does not eliminate blind spots or warn of moving objects. See Owner's Manual for safety information. ⁴Driving is serious business and requires your full attention. If you have to use the feature while driving, exercise extreme caution at all times so full attention may be given to vehicle operation. ⁵Available services/features may be shown. Compatible connected device may be required. Only use services/features and device when safe and legal to do so. Subject to GPS and wireless network availability and connection, and system/technology limitations. Text rates/data usage/subscription may apply. Some services/features provided by companies not within Nissan or its partners' or agents' control and may be discontinued at any time. **For more information, see Dealer or Owner's Manual.** ⁶Availability of specific features is dependent upon the phone's Bluetooth® support. Please refer to your phone Owner's Manual for details. Bluetooth® word mark and logos are owned by Bluetooth SIG, Inc., and any use of such marks by Nissan is under licence. ⁷Use the text messaging feature after stopping your vehicle in a safe location. If you have to use the feature while driving, exercise extreme caution at all times so full attention may be given to vehicle operation. Compatible smartphone required. ⁸XM® and SiriusXM® Satellite Radio is available in the 10 Canadian provinces and the 48 contiguous United States. Subscription sold separately after trial period. All subscriptions subject to customer agreement at siriusxm.ca/terms. All fees and programming subject to change. ©2020 Sirius XM Canada Inc. The Sirius, XM, and SiriusXM names and all related marks and logos are trademarks of Sirius XM Radio Inc. All other trademarks are the property of their respective owners. ⁹Airbags are only a supplemental restraint system; always wear your seat belt. Rear-facing child restraints should not be placed in the front-passenger's seat. Also, in addition to any other requirement of applicable law, all children 12 and under should ride in the rear seat properly secured in child restraints, booster seats, or seat belts according to their size. Airbags will only inflate in certain accidents; see your Owner's Manual for more details. ¹⁰The optional Rear Sonar System is a convenience, but is not a substitute for proper backing procedures. Always turn and check that it is safe to do so before backing up. May not detect every object behind you. ¹¹Extra cost option. ¹²Whichever occurs first. Apple CarPlay® is a registered trademark of Apple, Inc. Bluetooth® is a registered trademark of Bluetooth SIG, Inc. Google, Android, Android Auto,™ and other marks are trademarks of Google LLC. The Sirius, XM, and SiriusXM names and all related marks and logos are trademarks of Sirius XM Radio Inc. All other trademarks are the property of their respective owners.

SPECIFICATIONS

Engine	S	SV
2.0 litre DOHC 16-valve 4-cylinder engine	■	■
—Horsepower – 131 HP @ 5200 rpm		
—Torque – 139 lb.-ft. @ 4800 rpm		
Nissan Direct Ignition System	■	■
Electronic drive-by-wire throttle	■	■
Heavy-duty alternator (150 amps)	■	■
Cold weather battery	■	■
Engine block heater	■	■

Drivetrain	S	SV
Xtronic CVT® (Continuously Variable Transmission)	■	■
Hill start assist	■	■

Brakes	S	SV
11.1" Front vented disc brakes	■	■
9.0" Rear drum brakes	■	■
4-wheel Anti-lock Braking System (ABS)	■	■
Electronic Brake force Distribution (EBD)	■	■
Brake Assist ¹	■	■

Suspension/Chassis Bracing/Steering	S	SV
Independent strut front suspension	■	■
Multi-leaf rear suspension with solid axle	■	■
Front stabilizer bar	■	■
Engine-speed-sensitive electric power steering	■	■

Wheels/Tires	S	SV
15" x 5.5" steel wheels	■	
15" x 5.5" steel wheels with split 5-spoke wheel covers		■
185/60R15 All-Season tires	■	■

Exterior Features	S	SV
Black rear bumper, door handles, and outside mirrors	■	
Body-colour front bumper	■	■
Body-colour rear bumper		■
Body-colour outside mirrors and rear door finisher		■
Black grille	■	
Silver-painted grille		■
Dual power heated outside mirrors	■	■
Six roof rack-mounting points ²	■	■
40/60-split rear cargo doors	■	■
180° Maximum opening range for rear cargo doors	■	■
Sliding side door on both driver's and passenger's sides	■	■
Rear window defroster	R	R
Halogen headlights	■	■
Daytime Running Lights	■	■
Rear privacy glass	R	R
Rear Sonar System ³		■
Splash guards	■	■

Comfort/Convenience	S	SV
Air conditioning	■	■
20 Integrated reinforced cargo-mounting points for custom shelving ²	■	■
Six floor-mounted D-rings in cargo area ²		■
Six cargo area wall-mounted tie-down D-rings ²	■	■
Pre-wiring for telematics upfitting	■	■
Driver's and passenger's dual overhead map lights	■	■
Three ceiling-mounted cargo lights	■	■
Hardboard interior cargo panels	■	■

Comfort/Convenience (continued)	S	SV
Interior rearview mirror	R	R
Rear cargo floor protector	■	■
Front vinyl flooring	■	■
Remote keyless entry		■
Power windows with one-touch auto-down with auto-reverse	■	■
Power door locks with auto-locking feature	■	■
Cruise control with steering wheel-mounted controls	■	■
Variable intermittent windshield wipers	■	■
Multi-function trip computer	■	■
Mobile Office Style centre console with file folder and laptop storage	■	■
Upper dashboard storage bin	■	■
Front-door map pockets	■	■
Two cup holders	■	■
12-volt DC power outlet ⁴	■	
Two 12-volt DC power outlets ⁴		■
RearView Monitor ⁵	■	■

Seating/Appointments	S	SV
Grey cloth seats with reinforced side bolster wear patches on outer bolsters	■	■
Driver's seat armrest	■	■
6-way manual adjustable driver's seat with manual lumbar	■	■
4-way manual passenger's seat	■	■
Fold-down passenger's seat with seatback tray table	■	■

Audio/Entertainment	S	SV
NissanConnect® 178 mm (7") touch-screen display ⁶	■	■
Apple CarPlay ^{®7} integration	■	■
Android Auto™ ⁷	■	■
Hands-free Text Messaging Assistant ⁸	■	■
Bluetooth® Hands Free Phone System ⁹	■	■
AM/FM audio system	■	■
Auxiliary audio input jack ⁴	■	■
USB connection port ⁴	■	■
Two speakers	■	■
SiriusXM® Radio with 3-month subscription included ¹⁰	■	■
Streaming Audio via Bluetooth ^{®9}	■	■

Safety/Security	S	SV
Nissan Advanced Airbag System with dual-stage supplemental front airbags with seat belt and occupant-classification sensors ¹¹	■	■
Driver's and passenger's seat-mounted side-impact supplemental airbags ¹¹	■	■
Roof-mounted curtain supplemental airbags for side-impact and rollover head protection ¹¹	■	■
Vehicle Dynamic Control (VDC) ¹² with Traction Control System (TCS)	■	■
3-point ALR/ELR passenger seat belt system (ELR for driver)	■	■
Front seat belts with pre-tensioners and load limiters	■	■
Passenger's seat top tether anchor	■	■
Zone Body construction with front and rear crumple zones	■	■
Energy-absorbing steering column	■	■
Side door guard beams	■	■
Tire Pressure Monitoring System (TPMS) ¹³	■	■
Immobilizer Key System	■	■

DIMENSIONS/CAPACITIES/WEIGHTS/FUEL



Exterior Dimensions – Inches (mm)	S	SV
Wheelbase	115.2 (2925)	
Overall length	186.3 (4732.5)	
Overall width (mirrors folded)	68.1 (1729.5)	
Overall height	73.7 (1871.7)	
Track width (front)	60.0 (1525)	
Track width (rear)	59.8 (1520)	
Sliding side doors opening width	28.7 (728)	
Sliding side doors opening height	45.8 (1163)	
Rear door opening width	50.9 (1292)	
Rear door opening height	48.6 (1233)	
Step-in height (front)	14.8 (377)	
Step-in height (slide doors)	19.2 (487)	
Cargo area liftover height	21.1 (536)	
Angle of approach (degrees)	17.3°	
Angle of departure (degrees)	24.8°	
Turning diameter – feet (metres)	36.7 (11.2)	

Interior Dimensions – Inches (mm)	S	SV
Head room	41.7 (1059)	
Leg room	42.6 (1082)	
Hip room	51.3 (1303)	
Shoulder room	54.1 (1374)	

Cargo Dimensions – Inches (mm) ²	S	SV
Cargo volume – cu. ft. (L)	122.7 (3474)	
EPA interior passenger volume – cu. ft. (L)	55.6 (1574)	
Total interior volume – cu. ft. (L)	178.3 (5049)	
Maximum cargo length	82.8 (2104)	
Maximum cargo length w/ passenger seat down	116.3 (2955)	
Maximum cargo width	54.8 (1391)	
Cargo width at wheelhouse floor	48.0 (1219)	
Maximum cargo height	53.0 (1345)	

Capacities	S	SV
Seating capacity		2
Fuel tank – Imp. gal. (L)		12.1 (54.9)
Engine oil – L		5.1

Weight – lbs. (kg)	S	SV
GVWR	4773 (2165)	

Curb Weight	S	SV
	3278.6 (1487.2)	3285.6 (1490.3)

Payload – lbs. (kg)	S	SV
Maximum Payload ¹⁴	1480 (671.3)	1450 (657.5)

2021 Fuel Consumption Estimates – L/100 km (MPG) ¹⁵	S	SV
City/Hwy	9.9 (29)/9.1(31)	9.9 (29)/9.1(31)

Actual mileage may vary with driving conditions – use for comparison only.

PACKAGES

Rear Door Glass Package
<ul style="list-style-type: none"> Rear door windows with privacy glass Interior rearview mirror Rear window defroster

¹Brake Assist cannot prevent all collisions and may not provide warning or braking in all conditions. Driver should monitor traffic conditions and brake as needed to prevent collisions. See Owner's Manual for safety information.
²Cargo and load capacity limited by weight and distribution. Always secure cargo. Heavy loading of the vehicle with cargo, especially on the roof, will affect the handling and stability of the vehicle.
³The optional Rear Sonar System is a convenience, but is not a substitute for proper backing procedures. Always turn and check that it is safe to do so before backing up. May not detect every object behind you.
⁴Driving is serious business and requires your full attention. If you have to use the connected device while driving, exercise extreme caution at all times so full attention may be given to vehicle operation.
⁵RearView Monitor may not detect every object and does not eliminate blind spots or warn of moving objects. See Owner's Manual for safety information.
⁶Driving is serious business and requires your full attention. If you have to use the feature while driving, exercise extreme caution at all times so full attention may be given to vehicle operation.
⁷Available services/features may be shown. Compatible connected device may be required. Only use services/features and device when safe and legal to do so. Subject to GPS and wireless network availability and connection, and system/technology limitations. Text rates/data usage/subscription may apply. Some services/features provided by companies not within Nissan or its partners' or agents' control and may be discontinued at any time. **For more information, see Dealer or Owner's Manual.**
⁸Use the text messaging feature after stopping your vehicle in a safe location. If you have to use the feature while driving, exercise extreme caution at all times so full attention may be given to vehicle operation. Compatible smartphone required. Text rates and/or data usage may apply.
⁹Availability of specific features is dependent upon the phone's Bluetooth® support. Please refer to your phone Owner's Manual for details. Bluetooth® word mark and logos are owned by Bluetooth SIG, Inc. and any use of such marks by Nissan is under licence.
¹⁰XM® and SiriusXM® Satellite Radio is available in the 10 Canadian provinces and the 48 contiguous United States. Subscription sold separately after trial period. All subscriptions subject to customer agreement at siriusxm.ca/terms. All fees and programming subject to change. ©2020 Sirius XM Canada Inc. The Sirius,® XM,® and SiriusXM® names and all related marks and logos are trademarks of Sirius XM Radio Inc. All other trademarks are the property of their respective owners.
¹¹Airbags are only a supplemental restraint system; always wear your seat belt. Rear-facing child restraints should not be placed in the front-passenger's seat. Also, in addition to any other requirement of applicable law, all children 12 and under should ride in the rear seat properly secured in child restraints, booster seats, or seat belts according to their size. Airbags will only inflate in certain accidents; see your Owner's Manual for more details.
¹²Vehicle Dynamic Control cannot prevent collisions due to abrupt steering, carelessness, or dangerous driving techniques. It should remain on when driving, except when freeing the vehicle from mud or snow. See Owner's Manual for safety information.
¹³Tire Pressure Monitoring System is not a substitute for regular tire pressure checks. See Owner's Manual for safety information.
¹⁴Payload rating represents maximum allowable weight of people and cargo, and can be reduced by the weight of optional equipment. See Nissan Towing Guide and Owner's Manual for additional information.
¹⁵2021 Fuel Consumption Estimate. Actual mileage may vary with driving conditions – use for comparison only. Apple CarPlay® is a registered trademark of Apple, Inc. Bluetooth® is a registered trademark of Bluetooth SIG, Inc. Google, Android,® Android Auto,™ and other marks are trademarks of Google LLC. The Sirius,® XM,® and SiriusXM® names and all related marks and logos are trademarks of Sirius XM Radio Inc. All other trademarks are the property of their respective owners.