



Innovation
that excites

NISSAN MICRA



[Exterior design](#) | [Interior design](#) | [Technology](#) | [Interior space](#) | [Nissan Intelligent Mobility](#) | [Accessory](#) | [Technical Specifications](#) | [Further Information](#)

[Print](#) | [Close](#)

[REQUEST A TEST DRIVE](#)





DESIGNED TO RAISE EXPECTATIONS. Audacious by nature, the 5th generation Nissan MICRA arrives to challenge the small car standards in design, comfort and performance. Praised for its unique blend of expressive yet premium design inside-out, intelligent features and its agile driving characteristics, **MICRA WILL BECOME YOUR AUDACIOUS AND TECH ADVANCED SMALL CAR.**

[Exterior design](#) | [Interior design](#) | [Technology](#) | [Interior space](#) | [Nissan Intelligent Mobility](#) | [Accessory](#) | [Technical Specifications](#) | [Further Information](#)

[Print](#) | [Close](#)

[Page 1](#) | [Page 2](#) | [Page 3](#)

[REQUEST A TEST DRIVE](#)



CLASS-LEADING TECHNOLOGY FOR AN ENERGISING YET CONFIDENT DRIVE.

Imagine a bolder ride through life... driving with greater exhilaration, confidence and awareness of the world around you. This is the inspiration behind Nissan Intelligent Mobility. It comes to life in the Micra through Intelligent Driving systems that keep an eye out all around you, alerting you and stepping in when you need it to help keep you out of trouble. The more secure you feel behind the wheel, the more you can experience the sheer joy of driving.



BE EXPRESSIVE.

Create your own Micra design inside-out. Dare to express yourself by choosing from among the stunning range of body colours, interior themes, exterior coloured inserts, wheels and body decals.

MULTIPLE CONFIGURATIONS

Interior trims

Door mirror caps

Body side mouldings

Front bumper finishers

Rear bumper finishers

17" alloys with coloured inserts

Body decals



MAKE IT YOUR LIVING SPACE.

The Micra's interior has been finely crafted to uplift your experience on the road. From its horizontal dashboard wrapped in soft-touch materials, to the premium details and exclusive choice of coloured trims, the Micra's design flawlessly blends comfort and style to create a truly inspiring atmosphere.

EXCEPTIONAL DETAILS

D-Shape Steering Wheel

LED Ambient lighting

Smart group of commands

Soft-touch materials and silver finishings

Features vary by grade



DESIGNED TO BE YOUR SPACE.

With an optimised driving position, ergonomic anti-fatigue seats, convenient access to commands and maximised noise insulation, the Micra has been engineered to amplify your comfort.

Features vary by grade

[REQUEST A TEST DRIVE](#)





BOSE® PERSONAL® UNIQUE SOUND EXPERIENCE

Driving MICRA is a rousing experience thanks to its BOSE® PERSONAL® audio system. Highly praised by its outstanding performance and soundstage possibilities, it will turn each ride into a stimulating and uplifting journey.



BOSE® PERSONAL® AUDIO SYSTEM.

Featuring 6 speakers with 2 embedded in the driver's headrest, the exclusive BOSE® PERSONAL® Audio System brings an immersive 360° listening experience.

TAILOR IT YOUR WAY.

Personalise your listening experience by choosing your desired level of audio immersion at the touch of a button through the BOSE® PersonalSpace Control feature built into the audio settings.

SMART DESIGN.

Compact and smartly engineered, the BOSE® PERSONAL® system gives you the premium audio experience without jeopardising your storage space.



NEW NISSANCONNECT

Nissan's next-generation audio and navigation system comes with Smartphone integration, Bluetooth hands-free communication and in-vehicle applications and features a 7" multi-touch display screen that makes everything simple, quick and convenient. You can customise the layout, choose shortcuts and widgets to suit your preferences and use voice recognition. New NissanConnect also allows you to use your familiar applications with Apple CarPlay® and Android Auto®.



CUSTOMISE HOME MENU. With the shortcuts and widgets manager you can customise your home screen to display most frequently used features like audio, call history and traffic information.



VOICE RECOGNITION. Press and hold the talk button on your steering wheel to activate simple voice commands - it's safe, quick and convenient when you're on move.



SINGLE LINE SEARCH. You can now Search for Addresses, POI's or both using a Single Line Search Option which makes it so much easier to search for your destination.

YOUR MUSIC. YOUR WAY Use Bluetooth streaming audio or the USB input to play music directly from your smartphone.



INTELLIGENT INTEGRATION TO MAKE YOUR CAR A MORE PRODUCTIVE SPACE.

Plan your Trip ahead through Mobile/ Web or Onboard Navigation with Premium Traffic Data giving you accurate Route Options based on Real Time Traffic. Keep yourself always updated with Over the Air Updates delivered via your Smartphone or by connecting with an external WiFi Hotspot. Push destination to car from the Web Interface or the Door-to-Door navigation App. Navigate to your favorite destinations or contacts straight from the Door-to-Door navigation App.



PUSH DESTINATION TO CAR VIA A COMPUTER OR THE MOBILE APP. Send Destination to Car using any interface and plan your trip before leaving.



DOOR-TO-DOOR NAVIGATION. The Mobile App enables you to navigate end to end, from where you parked your car to your destination.



PREMIUM TRAFFIC DATA. Get Accurate time to destination (ETA) information before you leave based on Real Time Traffic and decide the best route to your destination.



DOOR-TO-DOOR NAVIGATION APP
Download the Door-to-Door Navigation App on your Smartphone and access all your maps on your next generation NissanConnect multi-touch display screen.





REALTIME DRIVING INFORMATION



DRIVING AIDS



CALLER ID



BLUETOOTH AUDIO

NISSAN ADVANCED DRIVE-ASSIST DISPLAY INNOVATION THAT'S RIGHT IN FRONT OF YOU.

Designed to reduce distractions and make the most of your journey, the Micra's high-definition 5" TFT Advanced Drive-Assist Display brings you all the information you need, right in front of your eyes.





Driver seat with height and back angle adjustment

Class leading seat slide range

Adjustable steering wheel

60:40 split folding rear seats

SPACE FOR YOURSELF AND MORE.

The Micra is designed for living life to the full. Despite being engineered for optimum driver and passenger comfort, the Micra brings ample space for the rear passengers with top class shoulder and knee room.

[Exterior design](#) | [Interior design](#) | [Technology](#) | [Interior space](#) | [Nissan Intelligent Mobility](#) | [Accessory](#) | [Technical Specifications](#) | [Further Information](#)

[Print](#) | [Close](#)

[Page 1](#) | [Page 2](#)

[REQUEST A TEST DRIVE](#)





SPACE THAT BENDS TO YOUR IDEAS.

The capacity of the Micra is surprising. Fold down the rear seats to take any extra bags or bulky objects on board. Use the smart storage spaces for your personal items including a spacious 10L glove box, 1.5L bottle door holder, front and rear cup holders and the phone-holder with USB/12V power sockets.

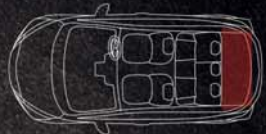


Twin cup holders smartly located in the central console



Convenient 10L glove box to fit your tablet or a 2L bottle inside.

300L BOOT CAPACITY
Rear seat not folded



1004L FULL BACK
Rear seats folded down



REQUEST A TEST DRIVE



RIGHT ON THE NOSE.

In drive mode, the display gives you both a front and overhead view, so you know just how much room you have.

COMPLETE THE PICTURE.

Located under the door mirrors, this camera helps create the virtual 360° bird's-eye view, whether you're in drive or reverse.

SPARE YOUR WHEELS.

In drive or reverse, you can switch the camera from overhead to side view. A great help for seeing how close you are to the kerb.

BACKGROUND SAVVY.

In reverse, the visual display helps you see what is directly behind you, while the overhead view helps with smaller objects that might be hidden below your window.

**NISSAN INTELLIGENT AROUND VIEW MONITOR*
WITH MICRA AS YOUR PARTNER,
EVEN PARKING IS A PLEASURE.**

What if parallel parking was easier? The Micra's rear view camera and rear parking sensors are great to give you further confidence when backing up- but when it comes to parking, it's nice to see more than just what's directly behind you. The class-exclusive Intelligent Around-View Monitor uses four cameras that give you a virtual 360° bird's-eye view of your vehicle, with selectable split-screen close-up visuals of the front, rear, and kerb side, so you can get a better look. Since all obstacles aren't stationary, Moving Object Detection can also warn you about moving objects in your trajectory.

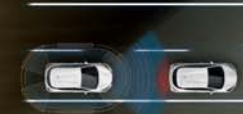
*Intelligent Around View Monitor is available as an option from N-Connecta grade

NISSAN INTELLIGENT DRIVING BRIM WITH CONFIDENCE.

Imagine a bolder ride through life – driving with greater exhilaration, confidence, and awareness of the world around you. This is the inspiration behind Nissan Intelligent Mobility. Brim with confidence in the Micra with systems that keep an eye out all around you, watch the flow of traffic, and even step in to take action to help keep you out of trouble. The more secure you feel behind the wheel, the more you can experience the sheer joy of driving.

The Micra comes packed with technologies including: Traffic Sign Recognition, High Beam Assist, Lane Departure Warning, Hill Start Assist.

NISSAN INTELLIGENT MOBILITY



INTELLIGENT EMERGENCY BRAKING. Constantly monitoring the presence of vehicles or pedestrians in your way, this upgraded system gives you a warning and applies the brakes if there is any danger ahead.



INTELLIGENT LANE INTERVENTION. This technology gives you a visual alert and haptic vibration on the steering wheel, as well as assistance through subtle wheel braking to guide you back into the lane when drifting out without indicating.



BLIND SPOT WARNING. Boost your vision: the system will warn you if there are vehicles in the blind spots diagonally behind the car.



Features vary by grade

[Exterior design](#) | [Interior design](#) | [Technology](#) | [Interior space](#) | [Nissan Intelligent Mobility](#) | [Accessory](#) | [Technical Specifications](#) | [Further Information](#)

[Print](#) | [Close](#)

[Page 1](#) | [Page 2](#) | [Page 3](#) | [Page 4](#) | [Page 5](#)

[REQUEST A TEST DRIVE](#)

NISSAN INTELLIGENT DRIVING ALWAYS LOOKING OUT FOR YOU.

The Micra features a class-leading suite of safety technologies that support you along your journey. Acting as a third eye and sixth sense, Nissan's Intelligent Driving systems enhance the drive, making it as easy and fun as possible.



TRAFFIC SIGN RECOGNITION.
Never miss a speed limit sign thanks to realtime automatic road sign detection.



HIGH BEAM ASSIST.
See more on dark roads. This system activates the high beams and temporarily dips the lights for oncoming traffic.



HILL START ASSIST.
No rolling back. This system holds the brakes for the time it takes to get going on a hill.



NISSAN INTELLIGENT DRIVING MICRA, QUIETLY MAKING YOU A BETTER DRIVER.

Agile and responsive, the Micra's driving dynamics give you a better sense of the road. Nissan's Intelligent Ride Control reduces body motion for a smoother drive, while Intelligent Trace Control works with Nissan's new Electric Power Steering (EPS) system to deliver subtle yet secure manoeuvrability. Excitement. Confidence. Control.

NISSAN **INTELLIGENT MOBILITY**



INTELLIGENT RIDE CONTROL
Applies subtle braking to prevent unwanted body movement over bumps and enhance the overall comfort of your ride.



INTELLIGENT TRACE CONTROL
Delivers confident handling around corners. It adjusts the brake pressure on individual wheels to help keep an optimal line through turns.



[Exterior design](#) | [Interior design](#) | [Technology](#) | [Interior space](#) | [Nissan Intelligent Mobility](#) | [Accessory](#) | [Technical Specifications](#) | [Further Information](#)

[Print](#) | [Close](#)

[Page 1](#) | [Page 2](#) | [Page 3](#) | [Page 4](#) | [Page 5](#)

[REQUEST A TEST DRIVE](#)

NISSAN INTELLIGENT POWER
CATCH ME IF YOU CAN.

Drive with agility and confidence. The Micra uniquely balances manoeuvrability and smoothness. Thanks to its body rigidity, low driving position and Nissan Chassis Control technologies, the Micra brings you responsive steering and motion control, while its efficient engines give you instant acceleration for an exciting, yet secure, drive.



CHOOSE YOUR ENGINE

Choose an engine to match the way you drive. Use our table to compare power, torque, fuel consumption and emissions or visit your nearest Nissan dealer for further information.

| ENGINE | OUTPUT (PS) | TORQUE (NM) | FUEL CONSUMPTION (MPG, NEDC-BT COMBINED) |
|-------------------------------|-------------|-------------|--|
| IG 71 1L Petrol | 71 | 95 | 53.2 |
| IG-T 90 0.9L Petrol | 90 | 150 | 54.3 |
| dCi 90 1.5L Diesel | 90 | 220 | 68.8 (61.4 w/o ISS) |



INTERIOR PACK



INVIGORATING RED. Uplift your environment with the sophisticated INVIGORATING red leather trim.

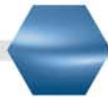


POWER BLUE. Refresh the atmosphere with a dynamic POWER blue interior trim.



ENERGY ORANGE. Boost your vitality with a stimulating ENERGY Orange trim.

EXTERIOR PACK



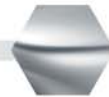
Power Blue



Energy Orange



Enigma Black



Vibrant Chrome

EXTERIOR PACK



EXTERIOR PACK PLUS

+ EXTERIOR PACK
17" ALLOY WHEEL WITH COLOURED INSERT



EXTERIOR PACK ULTIMATE

+ EXTERIOR PACK PLUS
BODY DECAL



ENHANCE YOUR INTERIOR

Go even deeper in personalisation with Micra exclusive accessories.



CUSTOM YOUR EXTERIOR

Sport, adventure, passion, mystery: The Micra is ready for it all. Customise yours to suit your lifestyle with Nissan Genuine Accessories.

1. Roof Box small (also available in medium)
2. Interior mirror cover*
3. Armrest
4. Velour mats

**Not compatible with auto-dimming interior mirrors standard on N-Connecta & Tekna grades*



Features vary by grade

AT NISSAN, WE FOCUS ON QUALITY.



It comes first in everything we do, in the lab and the design studio, the factory and our dealerships and in our relationship with you. We try, retry and try again. Because everything we do is mastered through experience. We call it Nissan Quality.



360° PROCESS

We build in quality from the outset, meticulously conceiving each car to make them more comfortable and more durable through innovative design, intelligent technology and thoughtful details inspired by you.



SAFETY

We work with our intelligent driving systems to constantly look out for you and help you avoid any mishaps for a bolder, more confident driving experience day after day. Our Around View Monitor uses 4 cameras to give you a virtual birds eye view of your car in its surroundings.



EXTREME RELIABILITY

We push our cars to the limit to guarantee their daily performance and reliability. We travel millions of kilometres in pre-production tests, open and close doors and bonnets thousands of times a day and use real volcanic dust from Japan to test window resistance.



ULTIMATE PROOF | reeboo

Our commitment to quality is best demonstrated by you. Search for testimonials, reviews and ratings online or find out what people are saying about Nissan on Reevo. It's the best place to compare vehicles and get real answers from real owners you can trust.



Innovation
that excites

NISSAN MICRA



[REQUEST A TEST DRIVE](#)



STANDARD EQUIPMENT

ALL NISSAN MICRAS COME WITH:

EXTERIOR STYLING

- Halogen headlights with signature finisher
- Concealed rear door handles
- LED signature Daytime Running Lights (DTRL)
- Rear roof spoiler
- Door mirrors with turn indicator

INTERIOR STYLING

- Soft-touch upper dash

SECURITY

- Remote central door locking
- Engine immobiliser

VENTILATION AND VISIBILITY

- Front fog lights
- Intelligent Auto Headlights
- Rain sensing auto wipers

CONVENIENCE

- Front electric windows
- Height and telescopic adjustable steering wheel
- Trip computer
- Driver and passenger sun visor with vanity mirror
- Puncture repair kit
- Parcel shelf
- Luggage room lighting
- Front console storage
- Front and rear door pockets
- Cupholders (x3)
- Manual height adjustable driver's seat
- Height adjustable front headrests
- Front 12V power socket
- Split folding rear seats (60:40)

SAFETY

- ABS with EBD and Brake Assist
- Driver, passenger, side and curtain airbags
- Front and rear seatbelts warning light
- Speed limiter
- Tyre Pressure Monitoring System (TPMS)
- Intelligent Trace Control
- Intelligent Ride Control
- ISOFIX childseat anchorage points (rear x2 and front passenger seat*)
- Hill Start Assist
- Intelligent Emergency Braking with Pedestrian Recognition
- High-Beam Assist
- Lane Departure Warning
- Intelligent Lane Intervention
- Automatic hazard lights

With your ideas and our technology, you can customise your journey. Connect with the Nissan Micra and have some fun!

OPTIONAL EXTRAS

- Metallic Paint
- Pearlescent Paint

*Refer to owner's manual for usage instructions

VISIA

IN ADDITION TO STANDARD EQUIPMENT

EXTERIOR STYLING

- 15" Steel wheels
- Electrically adjustable and manual folding black door mirrors
- Black coloured front door handles

CONVENIENCE

- 2 adjustable rear headrests

AUDIO

- Standard Audio system with MP3
- 2 speakers
- USB port with iPod connection
- Bluetooth®
- AUX Socket

INTERIOR STYLING

- Casual black cloth trim

VISIA+

IN ADDITION TO VISIA

CONVENIENCE

- Manual air conditioning
- Stop/Start System¹



¹Stop/Start System is not available on IG 71 engine

ACENTA

IN ADDITION TO VISIA+

EXTERIOR STYLING

- 16" Alloy wheels
- Body coloured door mirrors
- Body coloured front door handles

INTERIOR STYLING

- Black cloth trim
- Interior chrome door handles
- Satin silver decoration on gear knob, steering wheel and air vents

SAFETY

- Traffic Sign Recognition

DIG-T 117 POWERTRAIN ONLY

- 17" Alloy wheels

AUDIO AND NAVIGATION

- Advanced Drive Assist Display (5" TFT coloured screen)
- New NissanConnect Display Audio including 7" Touchscreen
- Apple CarPlay® and Android Auto® Smartphone Integration*
- DAB Digital Radio
- 4 speakers

COMFORT

- Cruise control
- Steering wheel mounted audio controls

ACENTA LIMITED EDITION IN ADDITION TO ACENTA

- Automatic air conditioning
- Nissan Intelligent Key and Start push button
- Rear power windows
- Auto-dimming rear view mirror

OPTIONS

- Vision Pack (New NissanConnect Navi with Premium TomTom Traffic and rear view monitor with rear parking sensors)
- BOSE® PERSONAL Audio Pack

OPTIONAL EXTRAS - PERSONALISATION

- Interior Pack
- Exterior Pack (door mirror caps, side mouldings, front and rear bumper finishers)
- Exterior Pack Plus (consisting of Exterior Pack + 17" Alloy wheels with coloured inserts)
- Exterior Pack Ultimate (consisting of Exterior Pack Plus + Decals)

N-SPORT

IN ADDITION TO ACENTA

EXTERIOR STYLING

- Black & Carbon-look Exterior Pack Plus with 17" Alloy Wheels
- Rear Privacy Glass
- N-Sport Badge
- Electric folding heated door mirrors with LED turn indicator

DIG-T 117 POWERTRAIN ONLY

- Lowered Suspension
- Exhaust Pipe Finisher

INTERIOR STYLING

- Part-leather/Alcantara Seats
- Sporty Floor Mats, Kneepads, Panels and Vents

AUDIO AND NAVIGATION

- Rear View Camera
- Rear Parking Sensors

CONVENIENCE

- Nissan Intelligent Key and Start push button

COMFORT

- Front Armrest



Stop/Start System is not available on IG 71 engine
*Apple CarPlay® and Android Auto® connectivity requires USB cable



Available in Solid White, Passion Red, Enigma Black and Echo Grey



N-CONNECTA

IN ADDITION TO ACENTA

EXTERIOR STYLING

- Electric folding heated door mirrors with LED turn indicator
- Rear privacy glass

INTERIOR STYLING

- Leather steering wheel
- LED ambient light in front console storage

AUDIO AND NAVIGATION

- New NissanConnect Navi with Premium TomTom Traffic

CONVENIENCE

- Automatic air conditioning
- Rear power windows
- Auto-dimming rear view mirror

OPTIONS

- Nissan Intelligent Key
- Vision+ Pack (Intelligent Around View Monitor with Moving Object Detection, Rear Parking Sensors and Blind Spot Warning)
- BOSE® PERSONAL Audio Pack

OPTIONAL EXTRAS - PERSONALISATION

- Interior Pack
- Exterior Pack (door mirror caps, side mouldings, front and rear bumper finishers)
- Exterior Pack Plus (consisting of Exterior Pack + 17" Alloy wheels with coloured inserts)
- Exterior Pack Ultimate (consisting of Exterior Pack Plus + decals)

TEKNA

IN ADDITION TO N-CONNECTA

EXTERIOR STYLING

- 17" Alloy wheels*

INTERIOR STYLING

- Absolute black cloth trim with grey inserts
- Leather wrapped gear knob with silver decoration
- Leather wrapped handbrake
- Synthetic leather inserts on front door pad and dashboard

CONVENIENCE

- 3 adjustable rear headrests**
- Nissan Intelligent Key and Start push button

AUDIO AND NAVIGATION

- BOSE® PERSONAL Audio Pack with 4 BOSE® speakers (front doors and A pillars), 2 driver headrest speakers and sound stage control
- Rear view camera
- Rear parking sensors

OPTIONS

- LED Headlights and Fog Lights
- Leather Pack (leather trim with heated front seats)
- Vision+ Pack (Intelligent Around View Monitor with Moving Object Detection, Rear Parking Sensors and Blind Spot Warning)

OPTIONAL EXTRAS - PERSONALISATION

- Interior Pack
- Leather Interior Pack
- Exterior Pack (door mirror caps, side mouldings, front and rear bumper finishers)
- Exterior Pack Plus (consisting of Exterior Pack + 17" Alloy wheels with coloured inserts)
- Exterior Pack Ultimate (consisting of Exterior Pack Plus + decals)



Image shown is Micra N-Connecta with Power Blue Exterior Pack Plus



Image shown is Micra Tekna with LED Headlights
*16" alloys for Xtronic engines **2 headrests for Xtronic engines

COLOURS



IVORY (S) D16



SOLID WHITE (S) ZY2



PLATINUM SILVER (M) ZBD



ECHO GREY (M) KPN



ENIGMA BLACK (M) GNE



ENERGY ORANGE (CM) EBF



POWER BLUE (CM) RQG



PASSION RED (CM) NBD

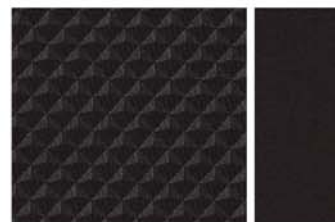


GLAZE WHITE (P) QNC

S = Solid Paint
M = Metallic Paint
CM = Character Metallic Paint
(unique to Micra)
P = Pearlescent Paint

TRIMS

VISIA/VISIA+



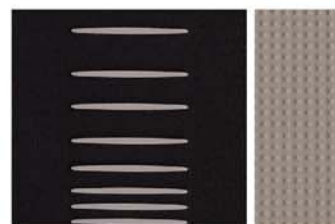
Cloth casual black

ACENTA/N-CONNECTA



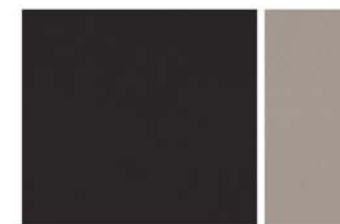
Cloth modern black / grey

TEKNA



Cloth absolute black / grey

TEKNA (OPTION)



Leather

WHEELS



15" Steel wheels with cover



16" Alloy wheels*



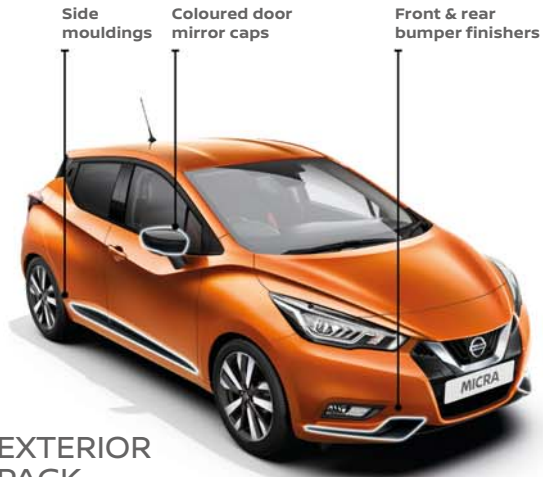
17" Alloy wheels

*16" alloys will be different for Xtronic engines

EXTERIOR PACKS

PACKS:

- Exterior Pack (door mirror caps, side mouldings, front and rear bumper finishers)
- Exterior Pack Plus (consisting of Exterior Pack and 17" Alloy wheels with coloured inserts)
- Exterior Pack Ultimate (consisting of Exterior Pack Plus and decals)



1 EXTERIOR PACK

2 EXTERIOR PACK PLUS

EXTERIOR PACK
+ 17" ALLOY WHEELS

3 EXTERIOR PACK ULTIMATE

EXTERIOR PACK PLUS
+ BODY DECALS

17" Alloy wheels with coloured inserts



Body decals



*Options availability varies by grade and combination

INTERIOR PACKS

POWER BLUE. Refresh the atmosphere with a dynamic blue interior trim.



ENERGY ORANGE. Boost your vitality with a stimulating orange trim.



INVIGORATING RED. Uplift your environment with the sophisticated red leather trim.



*Options availability varies by grade and combination

MICRA TECHNICAL DATA

| | | IG 71 | IG-T 90 | IG-T 100 | IG-T 100 Xtronic | DIG-T 117 | dCi 90 |
|-------------------|---------|----------------------------------|--|---|------------------------|------------------------|--|
| MODEL | | | | | | | |
| Available grades | | VISIA, VISIA+, ACENTA LE, ACENTA | VISIA+, ACENTA LE, ACENTA, N-CONNECTA, TEKNA | VISIA+, ACENTA LE, ACENTA, N-SPORT, N-CONNECTA, TEKNA | ACENTA, N-SPORT, TEKNA | ACENTA, N-SPORT, TEKNA | VISIA, VISIA+, ACENTA, N-CONNECTA, TEKNA |
| Transmission type | | 5 Gear Manual | | | CVT | 6 Gear Manual | 5 Gear Manual |
| Seating capacity | persons | 5 | | | | | |

| ENGINE | | | | | | | |
|---|------------|----------------|----------------|-----------------|-----------------|-----------------------------------|----------------|
| Max. engine power ⁽¹⁾ | kW(PS)@RPM | 52 (71) @ 6300 | 66 (90) @ 5500 | 74 (100) @ 5000 | 74 (100) @ 5000 | 86 (117) @ 5250 | 66 (90) @ 4000 |
| Max. torque (with overboost) ⁽¹⁾ | Nm@RPM | 95 @ 3500 | 150 @ 2250 | 160 @ 2750 | 144 @ 2000 | 180 @ 1750-4000 (200 @ 1750-3750) | 220 @ 2000 |
| Fuel type | | Petrol | | | | | Diesel |

| CHASSIS | | | | | | | |
|----------------|--|--|--|--|---|---|--|
| Wheel size | | Visia & Visia+: 15" x 6J steel Acenta LE & Acenta: 16" x 6J alloy | Visia+: 15" x 6J steel Acenta LE & Acenta & N-Connecta: 16" x 6J alloy Tekna: 17" x 6.5J alloy | Visia+: 15" x 6J steel Acenta LE & Acenta & N-Connecta: 16" x 6J alloy N-Sport & Tekna: 17" x 6.5J alloy | Acenta, N-Sport & Tekna: 16" x 6J alloy | All: 17" x 6.5J alloy All 205/45 R17 | Visia & Visia+: 15" x 6J steel Acenta & N-Connecta: 16" x 6J alloy Tekna: 17" x 6.5J alloy |
| Tyre size | | Visia & Visia+: 185/65 R15 Acenta LE & Acenta: 195/55 R16 | Visia+: 185/65 R15 Acenta LE & Acenta & N-Connecta: 195/55 R16 Tekna: 205/45 R17 | Visia+: 185/65 R15 Acenta LE & Acenta & N-Connecta: 195/55 R16 N-Sport & Tekna: 205/45 R17 | 195/55 R16 | All: 17" x 6.5J alloy All 205/45 R17 | Visia & Visia+: 185/65 R15 Acenta & N-Connecta: 195/55 R16 Tekna: 205/45 R17 |

| | | IG 71 | IG-T 90 | IG-T 100 | IG-T 100 Xtronic | DIG-T 117 | dCi 90 |
|------------------|--|----------------------------------|--|---|------------------------|------------------------|--|
| MODEL | | | | | | | |
| Available grades | | VISIA, VISIA+, ACENTA LE, ACENTA | VISIA+, ACENTA LE, ACENTA, N-CONNECTA, TEKNA | VISIA+, ACENTA LE, ACENTA, N-SPORT, N-CONNECTA, TEKNA | ACENTA, N-SPORT, TEKNA | ACENTA, N-SPORT, TEKNA | VISIA, VISIA+, ACENTA, N-CONNECTA, TEKNA |

| WEIGHTS & DIMENSIONS | | | | | | | | |
|------------------------------------|------------------------------|----|-------------------------|-------------------------|-------------------------|--------------|--------------|---------------------|
| Gross Vehicle Weight | | kg | 1470 | 1510 | 1550 | 1550 | 1560 | 1560 |
| Max. payload ⁽²⁾ | | kg | Visia & Visia+: 484 | Visia+: 473 | Visia+: 489 | - | Acenta: 463 | Visia & Visia+: 472 |
| | | | Acenta LE & Acenta: 484 | Acenta LE & Acenta: 465 | Acenta LE & Acenta: 481 | Acenta: 463 | N-Sport: 460 | Acenta: 472 |
| | | | - | N-Connecta: 464 | N-Sport: 474 | N-Sport: 460 | Tekna: 456 | N-Connecta: 472 |
| | | | - | Tekna: 447 | N-Connecta: 480 | - | - | Tekna: 472 |
| Max. trailer weight | braked | kg | 900 | 1200 | 1200 | 1170 | 1200 | 1170 |
| | unbraked | kg | 510 | 525 | 555 | 555 | 555 | 555 |
| Overall length | | mm | 3999 | | | | | |
| Overall width | | mm | 1743 | | | | | |
| Overall height | | mm | 1455 | | | | | |
| Min. turning circle (kerb to kerb) | | m | 10 | | | | | |
| Luggage space | max. length | mm | 720 | | | | | |
| | max. width | mm | 1000 | | | | | |
| Luggage capacity | VDA | l | 300 | | | | | |
| | max. with folded seats (VDA) | l | 1004 | | | | | |

ISS = Idle Stop/Start System
 1) In accordance with 1999/99/EC. Figures are intended for comparisons between vehicles and may not reflect real driving results. Optional equipment, maintenance, driving behaviour, road and weather conditions may affect the official results.
 2) Figures in accordance with EC Directive. Kerb weight condition is without driver and including coolant, oils, fuel, spare wheel and tools. Payload will be reduced depending on the options and/or accessories installed.
 3) In accordance with 1999/100/EC. Figures are intended for comparisons between vehicles and may not reflect real driving results. (Optional equipment, maintenance, driving behaviour, road and weather conditions may affect the official results)
 Advertisements placed for WLTP tested petrol/diesel model from 1st January 2019
 WLTP figures shown are for comparability purposes; only compare figures with vehicles tested to the same technical procedures. Actual real world driving results may vary depending on factors such as weather conditions, driving styles, vehicle load or any accessories fitted after registration. WLTP is a new test used for fuel consumption and CO₂ figures however until April 2020 the CO₂ figures are based on the outgoing (NEDC) test cycle which will be used to calculate vehicle tax on first registration.

MICRA TECHNICAL DATA

| | IG 71 | IG-T 90 | IG-T 100 | IG-T100 Xtronic | DIG-T 117 | dCi 90 |
|------------------|----------------------------------|--|---|------------------------|------------------------|--|
| MODEL | | | | | | |
| Available grades | VISIA, VISIA+, ACENTA LE, ACENTA | VISIA+, ACENTA LE, ACENTA, N-CONNECTA, TEKNA | VISIA+, ACENTA LE, ACENTA, N-SPORT, N-CONNECTA, TEKNA | ACENTA, N-SPORT, TEKNA | ACENTA, N-SPORT, TEKNA | VISIA, VISIA+, ACENTA, N-CONNECTA, TEKNA |

| PERFORMANCE | | | | | | | | |
|---------------------------------|--|---------|--------|--------|---|-------------|-------------|--------------------------------|
| Fuel consumption ⁽³⁾ | Low Phase - Min/Max | l/100km | 7.4 | 7.5 | 7.5 | 8.3 | 7.5 | 6.1 / (6.3) with / (w/o ISS) |
| | | mpg | 38.2 | 37.7 | 37.7 | 37.7 | 37.7 | 46.3 / (44.8) with / (w/o ISS) |
| | Medium Phase - Min/Max | l/100km | 5.7 | 5.6 | 5.2 | 5.9 | 5.6 | 5.0 / (5.2) with / (w/o ISS) |
| | | mpg | 49.6 | 50.4 | 54.3 | 54.3 | 50.4 | 56.4 / (54.3) with / (w/o ISS) |
| | High Phase - Min/Max | l/100km | 5.3 | 5.2 | 4.6 | 5.2 | 5 | 4.6 / (4.6) with / (w/o ISS) |
| | | mpg | 53.3 | 54.3 | 61.4 | 61.4 | 56.5 | 61.4 (61.4) with / (w/o ISS) |
| | Extra High Phase - Min/Max | l/100km | 6.7 | 6.5 | 5.8 | 6.7 | 6.3 | 6.0 / (5.9) with / (w/o ISS) |
| | | mpg | 42.2 | 43.5 | 48.7 | 48.7 | 44.8 | 47.1 / (47.9) with / (w/o ISS) |
| | Combined - Min/Max | l/100km | 6.1 | 6.0 | 5.6 | 6.3 | 5.9 | 5.4 / (5.4) with / (w/o ISS) |
| | | mpg | 46.3 | 47.1 | 50.4 | 50.4 | 47.9 | 52.3 / (52.3) with / (w/o ISS) |
| | CO ₂ mass emission (NEDC-BT combined) | g/km | 121 | 118 | 15" Wheels: 103 16" Wheels: 104 17" Wheels: 105 | 111 | 114 | 107 / (121) with / (w/o ISS) |
| | Emission Level | | EURO6C | EURO6C | EURO6D-Temp | EURO6D-Temp | EURO6D-Temp | EURO6C |
| Max. Speed | mph | 98 | 109 | 114 | | 121 | 111 | |
| Acceleration | 0 - 62 mph | sec | 16.4 | 12.1 | 10.9 | 13 | 9.9 | 11.9 |

Advertisements placed for WLTP tested petrol/diesel model from 1st January 2019
 WLTP figures shown are for comparability purposes, only compare figures with vehicles tested to the same technical procedures. Actual real world driving results may vary depending on factors such as weather conditions, driving styles, vehicle load or any accessories fitted after registration. WLTP is a new test used for fuel consumption and CO₂ figures however until April 2020 the CO₂ figures are based on the outgoing (NEDC) test cycle which will be used to calculate vehicle tax on first registration.

DIMENSIONS



A: Wheelbase: 2,525 MM
B: Overall length: 3,999 MM
C: Overall width: 1,743 MM
D: Overall height: 1,455 MM

