



Nissan Intelligent Mobility moves you one step ahead. In cars that feel like an extension of you, helping you see more and sense more, reacting with you, and sometimes even for you. Nissan Intelligent Mobility is about a better future – moving through life with greater confidence, excitement and connection to the world around you.



2021
VERSA®



information. ²⁶State laws may apply. Review before using. ²⁷Genuine Nissan Accessories are covered by Nissan's Limited Warranty on Genuine Nissan Replacement Parts, Genuine NISMO® S-Tune Parts, and Genuine Nissan Accessories for the longer of 12 months/12,000 miles (whichever occurs first) or the remaining period under the 3-year/36,000-mile (whichever occurs first) Nissan New Vehicle Limited Warranty. Terms and conditions apply. See dealer, Warranty Information Booklet, or parts.NissanUSA.com for details. ²⁸Brake Assist cannot prevent all collisions and may not provide warning or braking in all conditions. Driver should monitor traffic conditions and brake as needed to prevent collisions. See Owner's Manual for safety information. ²⁹Vehicle Dynamic Control cannot prevent collisions due to abrupt steering, carelessness, or dangerous driving techniques. It should remain on when driving, except when freeing the vehicle from mud or snow. See Owner's Manual for safety information. ³⁰Roadside Assistance available for a period of 36 months/36,000 miles from the date the vehicle is delivered to the first retail buyer or otherwise put into use, whichever is earlier. Apple CarPlay® is a registered trademark of Apple, Inc. Bluetooth® is a registered trademark of Bluetooth SIG, Inc. Facebook® is a registered trademark of Facebook, Inc. Google, Android, Android Auto, YouTube and other marks are trademarks of Google LLC. iPhone® is a registered trademark of Apple, Inc. All rights reserved. iPhone® or other external device not included. Siri® and Siri® Eyes Free are registered trademarks of Apple, Inc. The Sirius®, XM®, and SiriusXM® names and all related marks and logos are trademarks of Sirius XM Radio Inc. All other trademarks are the property of their respective owners. Twitter® is a registered trademark of Twitter, Inc. This brochure is intended for general descriptive and informational purposes only. It is subject to change and does not constitute an offer, representation or warranty (express or implied) by Nissan North America, Inc. Interested parties should confirm the accuracy of any information in this brochure as it relates to a vehicle directly with Nissan North America, Inc. before relying on it to make a purchase decision. Nissan North America, Inc. reserves the right to make changes, at any time, without prior notice, in prices, colors, materials, equipment, specifications, and models and to discontinue models or equipment. Due to continuous product development and other pre- and post-production factors, actual vehicle, materials and specifications may vary from this brochure. Some vehicles shown with optional equipment. See the actual vehicle for complete accuracy. Availability and delivery times for particular models or equipment may vary. Specifications, options and accessories may differ in Hawaii, U.S. territories and other countries. For additional information on availability, options or accessories, see your Nissan dealer or contact Nissan North America, Inc. At NissanUSA.com, you'll find virtual product demonstrations, a way to "build your own Nissan," a dealer locator, and more information about key Nissan support services. Or if you'd prefer, call **1-800-NISSAN-3** for answers to specific questions about Versa® or any other Nissan vehicle. The Nissan names, logos, product names, feature names, and slogans are trademarks owned by or licensed to Nissan Motor Co. Ltd. and/or its North American subsidiaries. Other trademarks and trade names are those of their respective owners. **Always wear your seat belt, and please drive responsibly.** ©2020 Nissan North America, Inc. '21 Versa®. 2101022-N-10/20-60K-KSL



Tech for a world that never stops

It's everything you're looking for, and more. Versa® features available Nissan Intelligent Mobility technologies that can help keep you safe and connect you to your world like never before.¹ Want personalization? You got it. Interior tech lets you customize every drive, from the available digital gauges to your perfect temperature. And when it comes to performance, merge and maneuver with ease, while getting up to 40 highway MPG.² This is tech that keeps you a step ahead. This is the Nissan Versa.



Intelligent Cruise Control

Go with the flow. Available Intelligent Cruise Control watches the flow of traffic to help out with your commute. The system helps maintain an adjustable speed and set distance between you and the car ahead.³



Nissan Safety Shield® 360

Imagine being surrounded by confidence on every drive. Nissan Intelligent Mobility includes features that monitor in front of you, behind you, and on either side, and can step in to help keep you safe. These six advanced safety features are standard on Versa SV and above.^{1, 6}

- Automatic Emergency Braking with Pedestrian Detection⁷
- Rear Automatic Braking⁸
- Rear Cross Traffic Alert^{9, 10}
- Blind Spot Warning^{9, 11}
- Lane Departure Warning¹²
- High Beam Assist

Advanced Drive-Assist® Display

The innovative available Advanced Drive-Assist Display is at your command. The 7" color display can be customized to show everything from your tachometer to music to fuel economy history.^{4, 5}



Smartphone connectivity



People to see? Places to be? Just ask Siri.® Equipped with Siri® voice control, Apple CarPlay® (shown on the right) brings on board to your Versa your contacts, favorite messaging apps, Apple Music® playlists, Apple Maps, and more. Simply plug in your compatible iPhone® and go.^{13, 14}



With Android Auto™ you can keep your eyes on the road and hands on the wheel while using your voice to help you with your day. Ask Google to play your favorite song, navigate home, or respond to a text hands-free. Just say, "Hey Google" or long-press the voice control button on your steering wheel.^{14, 15, 16}



Great MPG, plenty of power, infinite city fun

Versa® gives you a fuel-sipping exceptional 40 highway fuel economy and still delivers more power than ever. That means plenty of punch around town and when merging on the freeway.

32
City MPG²



40
Hwy MPG²

Pass-through trunk and 60/40-split seatbacks

When you need more room for cargo, the available 60/40-split fold-down rear seats let you add some gear, with a passenger still aboard. Or fold both seats down and really pack it in.¹⁷



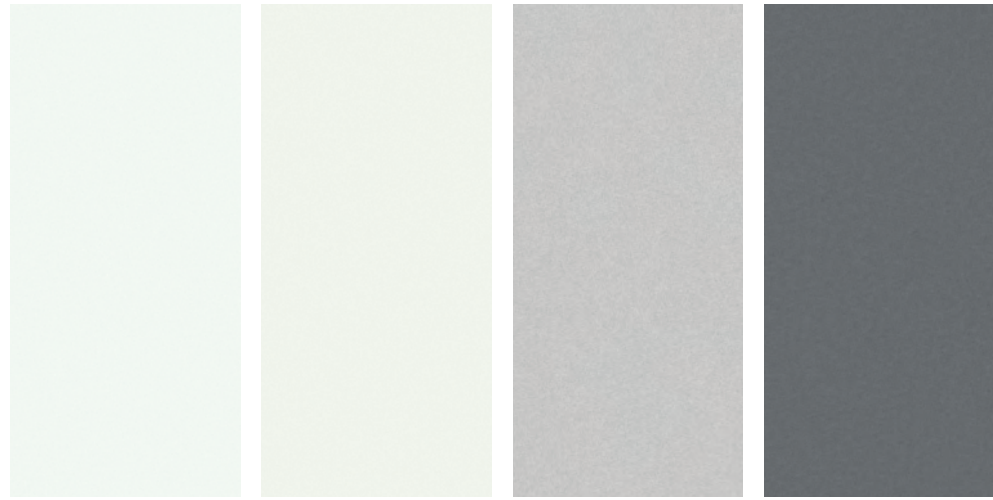
It's okay to say "wow" every time you get in. From the moment you get in, you'll feel like you've been upgraded. Impressive fit and finish, smart design, and available tech you might find in some luxury vehicles all add up to your everyday wow moment.

D-shaped steering wheel

7" touch-screen display

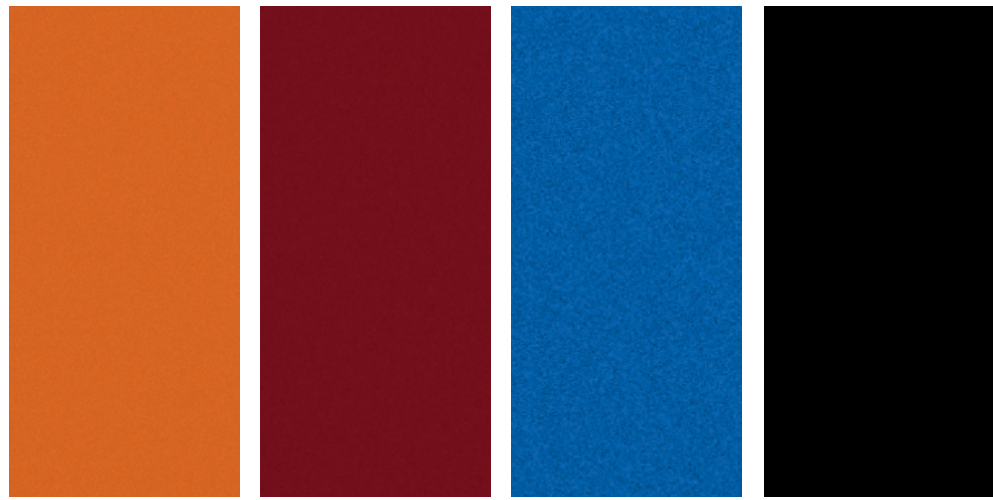
Contrast dash stitching⁹

CHOOSE YOUR COLOR



Fresh Powder Aspen White TriCoat¹⁸ Brilliant Silver Metallic Gun Metallic

	S	SV	SR	S	SV	SR	S	SV	SR	S	SV	SR
CHARCOAL CLOTH	■						■			■		
GRAPHITE PREMIUM CLOTH		■			■			■			■	
CHARCOAL SPORT CLOTH						■						■



Monarch Orange Metallic¹⁸ Scarlet Ember Tintcoat¹⁸ Electric Blue Metallic Super Black

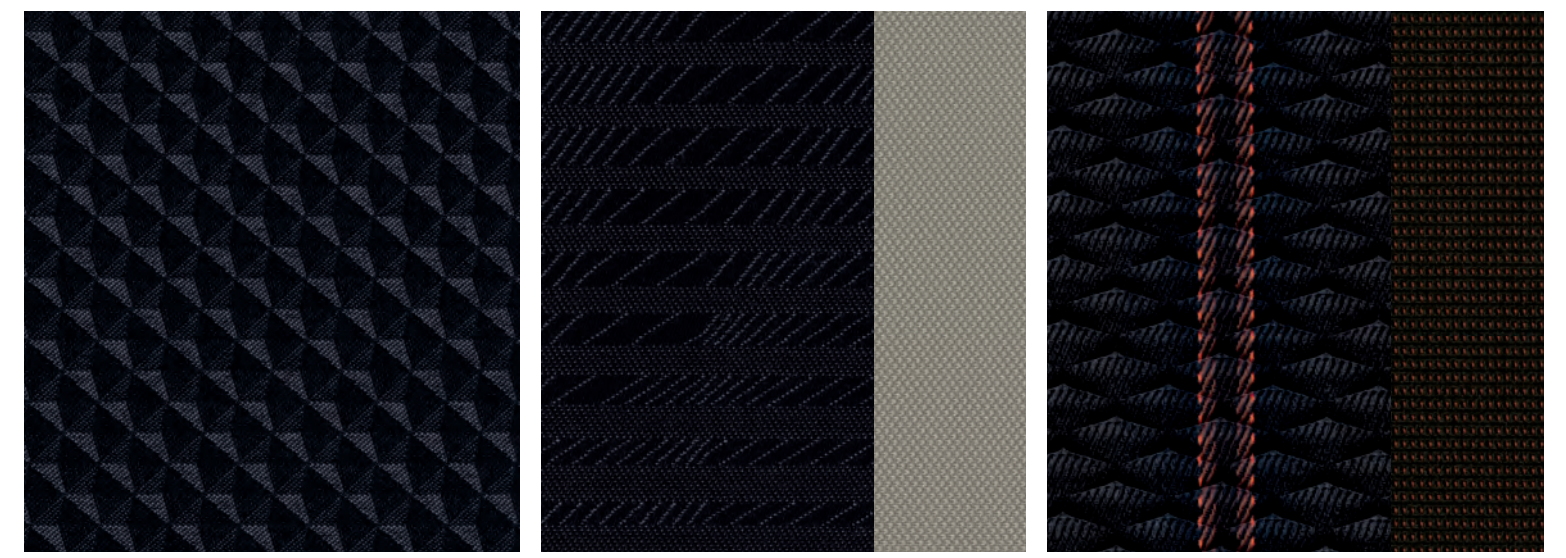
	S	SV	SR	S	SV	SR	S	SV	SR	S	SV	SR
CHARCOAL CLOTH							■			■		
GRAPHITE PREMIUM CLOTH		■			■			■			■	
CHARCOAL SPORT CLOTH			■			■						■

■ Standard
 Nissan has taken care to ensure that the color swatches presented here are the closest possible representations of actual vehicle colors. Swatches may vary slightly due to the printing process and whether viewed in daylight, fluorescent or incandescent light. Please see the actual colors at your local Nissan dealer.

CHOOSE YOUR INTERIOR



Nissan Versa[®] SR shown in Charcoal Sport Cloth with optional equipment.



Charcoal Cloth S Graphite Premium Cloth SV Charcoal Sport Cloth SR

CHOOSE YOUR TRIM LEVEL

S

- 122-hp 1.6-liter DOHC 4-cylinder engine
- 5-speed manual transmission
- Available Xtronic CVT® (Continuously Variable Transmission)
- Intelligent Forward Collision Warning¹⁹
- Automatic Emergency Braking with Pedestrian Detection⁷
- Rear Automatic Braking⁸
- Lane Departure Warning¹²
- High Beam Assist
- RearView Monitor²⁰
- 7" touch-screen display
- Bluetooth® Hands-free Phone System¹⁴
- Streaming Audio via Bluetooth¹⁴
- Siri® Eyes Free¹⁴
- Remote Keyless Entry with Push Button Ignition
- AM/FM audio system with four speakers
- Three USB ports¹³
- Cruise control
- Air conditioning with in-cabin filter
- Sun visors with vanity mirrors
- Chrome V-Motion grille
- Cloth seat trim
- Matte carbon-fiber look interior door trim
- Available 60/40-split fold-down rear seats
- Nissan Advanced Air Bag System with driver and passenger dual-stage supplemental air bags²¹
- Seat-mounted driver and front-passenger side-impact supplemental air bags²¹
- Seat-mounted rear-passenger side-impact supplemental air bags²¹
- Driver and front-passenger knee air bags²¹
- Roof-mounted curtain side-impact supplemental air bags for front and rear-seat outboard occupant head protection²¹
- Tire Pressure Monitoring System (TPMS) with Easy-Fill Tire Alert^{22, 23}



SR INCLUDES SV EQUIPMENT PLUS:

- 17" Split 5-spoke aluminum-alloy wheels
- LED headlights with LED signature
- Fog lights
- Black-painted heated outside mirrors with LED turn signal indicators
- Leather-wrapped steering wheel
- Leather-wrapped shift knob
- Prima-Tex™-appointed dash trim
- Nissan Intelligent Key® with Push Button Ignition
- Remote Engine Start System²⁶
- Dark chrome V-Motion grille
- Body-color rear spoiler
- AM/FM audio system with six speakers



SV INCLUDES S EQUIPMENT PLUS:

- 16" Aluminum-alloy wheels
- 7" Advanced Drive-Assist® Display^{4, 5}
- NissanConnect® 7" color touch-screen display¹⁴
- Apple CarPlay® integration¹⁴
- Android Auto™¹⁴
- Blind Spot Warning¹¹
- Rear Cross Traffic Alert¹⁰
- SiriusXM® Radio with 3-month subscription included¹⁴
- Body-color heated outside mirrors with integrated turn signal indicators
- Body-color exterior door handles
- Chrome interior door handles
- Intelligent Driver Alertness²⁴
- Rear Door Alert²⁵
- Voice Recognition¹⁵
- Driver's seat-mounted armrest



CHOOSE YOUR PACKAGE

SR CONVENIENCE PACKAGE

- Intelligent Cruise Control³
- Automatic Climate Control
- Heated front seats



CHOOSE YOUR ACCESSORIES



- A. Center Console Storage Mats**
Keep your valuables from going their own way.
- B. Center Armrest with Storage**
Relax, and give your arm a rest.
- C. Interior Accent Lighting**
Add a warm glow to the mood.
- D. Illuminated Kick Plates**
Fewer scuffs and a grand entry, every time.
- E. All-Season Trunk Area Protector**
Because being a trunk isn't easy.
- F. Carpeted Trunk Area Protector**
Keep your cargo area looking pristine.
- G. Clear Rear Bumper Protector**
No one has to know you're protecting your bumper.
- H. All-Season Floor Mats**
Bring on the weather.

Additional Accessories:

- Frameless Auto-dimming Rearview Mirror with Universal Remote
- Door Pocket Lighting
- Frameless Prizm Rearview Mirror with Universal Remote
- First-aid Kit
- Door Sill Protectors
- Sliding Trunk Organizer¹⁷
- Hideaway Trunk Net¹⁷
- Portable Trunk Organizer¹⁷
- Shopping Bag Hooks
- Nissan Chrome License Plate Frame
- Nissan Valve Stem Caps
- Wheel Locks
- And More

For more information and to shop online for Versa® Genuine Nissan Accessories, go to bit.ly/21Versa-Accy

GENUINE NISSAN ACCESSORIES

Turn brand-new into all you

Every Genuine Nissan Accessory is custom-fit, custom-designed and durability-tested. Each one is backed by Nissan's 3-year/36,000-mile (whichever occurs first) limited warranty (if installed by dealer at the time of purchase), and can be financed when installed by dealer at time of purchase.²⁷



Nissan Versa® SR shown in Scarlet Ember Tintcoat with Chrome Trunk Accent, Exterior Ground Lighting, Side-Window Deflectors, Rear Spoiler (standard on SR), and Splash Guards.

SPECIFICATIONS

Engine	S	SV	SR
1.6-liter DOHC 16-valve 4-cylinder engine	■	■	■
122 hp @ 6,300 rpm			
114 lb-ft of torque @ 4,000 rpm			
Continuously Variable Valve Timing Control System (CVTCS) on intake and exhaust valves	■	■	■
Sequential multi-point fuel injection	■	■	■
Nissan Direct Ignition System	■	■	■
Platinum-tipped spark plugs	■	■	■
Electronic drive-by-wire throttle	■	■	■

Drivetrain	S	SV	SR
Front engine/Front-Wheel Drive	■	■	■
5-speed manual transmission	■		
Xtronic CVT® (Continuously Variable Transmission)	□	■	■

Brakes	S	SV	SR
Front vented disc brakes/rear drum brakes	■	■	■
Anti-lock Braking System (ABS)	■	■	■
Electronic Brake force Distribution (EBD)	■	■	■
Brake Assist ²⁸	■	■	■

Suspension/Steering	S	SV	SR
Independent strut front suspension with stabilizer bar	■	■	■
Torsion beam rear suspension with integrated stabilizer bar	■	■	■
Vehicle-speed-sensitive electric power steering	■	■	■

Driver Assistance Technologies	S	SV	SR
Cruise control	■	■	■
Intelligent Cruise Control ³			C
Intelligent Forward Collision Warning ¹⁹	■	■	■
Automatic Emergency Braking with Pedestrian Detection ⁷	■	■	■
Lane Departure Warning ¹²	■	■	■
High Beam Assist	■	■	■
Blind Spot Warning ¹¹		■	■
Rear Cross Traffic Alert ¹⁰		■	■
RearView Monitor ²⁰	■	■	■
Rear Automatic Braking ⁸	■	■	■
Hill start assist	■	■	■
Intelligent Driver Alertness ²⁴		■	■
Vehicle Dynamic Control (VDC) ²⁹ with Traction Control System (TCS)	■	■	■

Wheels/Tires	S	SV	SR
15" x 6.5" steel wheels with full wheel covers	■		
16" x 6.0" aluminum-alloy wheels		■	
17" x 6.5" split 5-spoke aluminum-alloy wheels			■
195/65R15 all-season tires	■		
205/55R16 all-season tires		■	
205/50R17 all-season tires			■

■ Standard C Part of Convenience Package
□ Optional

Exterior Features	S	SV	SR
Automatic on/off headlights	■	■	■
Halogen projector headlights	■	■	
LED headlights with LED signature			■
Fog lights			■
Chrome V-Motion grille	■	■	
Dark chrome V-Motion grille			■
Dual power outside mirrors	■	■	■
Heated outside mirrors with LED turn signal indicators		■	■
Black outside mirrors	■		
Body-color outside mirrors		■	
Black-painted outside mirrors			■
Black door handles	■		
Body-color door handles		■	■
Body-color rear spoiler			■
Carbon-fiber look rear diffuser	■	■	■

Comfort/Convenience	S	SV	SR
Air conditioning with in-cabin microfilter	■	■	■
Automatic Temperature Control			C
Power windows with driver's one-touch auto-up/down	■	■	■
Power door locks with auto-locking feature	■	■	■
Rear Door Alert ²⁵		■	■
Follow Me Home headlights			■
Remote Keyless Entry with Push Button Ignition	■	■	
Nissan Intelligent Key® with Push Button Ignition			■
Remote Engine Start System ²⁶			■
Tilt and telescoping steering column	■	■	■
Sun visors with vanity mirrors and extensions	■	■	■
Map lights with key-linked illuminated entry	■	■	■
12-volt DC power outlet	■	■	■

Seating/Appointments	S	SV	SR
6-way manual adjustable driver's seat	■	■	■
4-way manual adjustable front-passenger's seat	■	■	■
Driver's seat-mounted armrest			■
Cloth seat trim	■		
Premium cloth seat trim		■	
Sport cloth seat trim			■
Prima-Tex™-appointed dash trim			■
Heated front seats			C
Leather-wrapped steering wheel			■
Leather-wrapped shift knob			■
Matte carbon-fiber look interior door trim	■	■	■
Chrome interior door handles		■	■
60/40-split fold-down rear seatbacks	□	■	■

Infotainment	S	SV	SR
Advanced Drive-Assist® Display ^{4, 5}		■	■
7" touch-screen display	■		
NissanConnect® 7" color touch-screen display ¹⁴		■	■
Apple CarPlay® integration ¹⁴		■	■
Android Auto™ ¹⁴		■	■
Siri® Eyes Free ¹⁴	■	■	■

Infotainment (continued)	S	SV	SR
Hands-free Text Messaging Assistant ¹⁶	■	■	■
Bluetooth® Hands-free Phone System ¹⁴	■	■	■
AM/FM audio system with four speakers	■	■	
AM/FM audio system with six speakers			■
SiriusXM® Radio with 3-month subscription included ¹⁴		■	■
Voice Recognition ¹⁵	■	■	■
Auxiliary audio input jack ¹³	■	■	■
Three USB ports ¹³	■	■	■
Streaming Audio via Bluetooth® ¹⁴	■	■	■
Steering wheel-mounted audio controls	■	■	■

Safety/Security	S	SV	SR
Nissan Advanced Air Bag System with dual-stage supplemental front air bags with seat-belt and occupant-classification sensors ²¹	■	■	■
Seat-mounted driver and front-passenger side-impact supplemental air bags ²¹	■	■	■
Seat-mounted rear passenger side-impact supplemental air bags ²¹	■	■	■
Driver and front-passenger supplemental knee air bags ²¹	■	■	■
Roof-mounted curtain side-impact supplemental air bags for front- and rear-seat outboard occupant head protection ²¹	■	■	■
3-point ALR/ELR seat belt system (ELR only for driver)	■	■	■
Front seat belts with pretensioners and load limiters	■	■	■
LATCH System (Lower Anchors and Tethers for CHildren)	■	■	■
Zone Body construction with front and rear crumple zones	■	■	■
Hood buckling creases and safety stops	■	■	■
Child safety rear door locks	■	■	■
Power windows lock-out button	■	■	■
Energy-absorbing steering column	■	■	■
Tire Pressure Monitoring System (TPMS) with Easy-Fill Tire Alert ^{22, 23}	■		
Tire Pressure Monitoring System (TPMS) with individual tire pressure display and Easy-Fill Tire Alert ^{22, 23}		■	■
Nissan Vehicle Immobilizer System	■	■	■

NISSAN ROADSIDE ASSISTANCE

Your peace of mind is on us. For 36 months or 36,000 miles, whichever comes first, your new Nissan is covered for the following:³⁰

- Flat-tire changes
- Trip Interruption benefits
- Jump starts
- Vehicle lockouts
- Emergency fuel delivery

Follow Nissan on:



visit [NissanUSA.com/versa](https://www.nissanusa.com/versa)

PRINTED IN POLAND

DIMENSIONS/CAPACITIES/WEIGHTS/MPG

Exterior Dimensions – Inches	S	SV	SR
	Wheelbase	103.1	103.1
Overall length	177	177	177
Overall width	68.5	68.5	68.5
Overall height	57.3	57.3	57.7
Track width (front/rear)	59.8/60.2	59.8/60.2	59.3/59.6

Interior Dimensions (front/rear) – Inches			
Head room	39.5/36.3		
Leg room	44.5/31		
Hip room	50.9/50.1		
Shoulder room	53.1/53.6		

Aerodynamics – Cd	S MT	S CVT	SV	SR
	Drag coefficient	0.32	0.32	0.32

Curb Weights – Lbs.	S	SV	SR
	Base total		

Manual transmission	2,599	-	-
Xtronic CVT®	2,650	2,657	2,729

2021 EPA Fuel Economy Estimates ²			
City/Hwy/Combined MPG	S	SV	SR
Manual transmission	27/35/30	-	-
Xtronic CVT®	32/40/35	32/40/35	32/40/35

¹Availability of features vary by vehicle model year, model, trim level, packaging, and options. ²2021 EPA Fuel Economy Estimates. 27 City MPG / 35 Highway MPG / 30 Combined MPG for Versa® with Manual Transmission. 32 City MPG / 40 Highway MPG / 35 Combined MPG for Versa with Xtronic CVT®. Actual mileage may vary with driving conditions. Use for comparison only. ³Intelligent Cruise Control uses limited braking and is not a collision avoidance or warning system. Driver should monitor traffic conditions and brake as needed to prevent collisions. See Owner's Manual for safety information. ⁴Driving is serious business and requires your full attention. If you have to use the feature while driving, exercise extreme caution at all times so full attention may be given to vehicle operation. ⁵Information displayed is dependent on how vehicle is equipped. ⁶Nissan Safety Shield technologies can't prevent all collisions or warn in all situations. See Owner's Manual for important safety information. ⁷Automatic Emergency Braking with Pedestrian Detection cannot prevent all collisions and may not provide warning or braking in all conditions. Driver should monitor traffic conditions and brake as needed to prevent collisions. See Owner's Manual for safety information. ⁸Rear Automatic Braking cannot prevent all collisions and may not provide warning or braking in all conditions. Driver should always turn and check surroundings before driving and brake as needed to prevent collisions. See Owner's Manual for safety information. ⁹Available feature. ¹⁰Rear Cross Traffic Alert may not detect all vehicles. See Owner's Manual for safety information. ¹¹Blind Spot Warning cannot prevent collisions and may not detect every object or warn in all situations. Driver should always turn and look before changing lanes. See Owner's Manual for safety information. ¹²Lane Departure Warning operates only when lane markings are able to be detected. See Owner's Manual for safety information. ¹³Driving is serious business and requires your full attention. If you have to use the connected device while driving, exercise extreme caution at all times so full attention may be given to vehicle operation. ¹⁴Use feature only when safe and legal. Compatible device and service required. Subject to third party service availability. For more information see [NissanUSA.com/connect/legal](https://www.nissanusa.com/connect/legal). ¹⁵Never program while driving. GPS mapping may not be detailed in all areas or reflect current road status. ¹⁶Use the text messaging feature after stopping your vehicle in a safe location. If you have to use the feature while driving, exercise extreme caution at all times so full attention may be given to vehicle operation. Compatible smartphone required. Text rates and/or data usage may apply. ¹⁷Cargo shown for display purposes only. Cargo and load capacity limited by weight and distribution. Always secure cargo. ¹⁸Extra cost option. ¹⁹Intelligent Forward Collision Warning cannot prevent collisions. See Owner's Manual for safety information. ²⁰RearView Monitor may not detect every object and does not eliminate blind spots or warn of moving objects. See Owner's Manual for safety information. ²¹Air bags are only a supplemental restraint system. Always wear your seat belt. Rear-facing child restraints should not be placed in the front-passenger's seat. All children 12 and under should ride in the rear seat properly secured in child restraints, booster seats, or seat belts according to their size. Air bags will only inflate in certain accidents. See Owner's Manual for safety information. ²²Tire Pressure Monitoring System is not a substitute for regular tire pressure checks. See Owner's Manual for safety information. ²³Vehicle must be on for the Easy-Fill Tire Alert to operate. ²⁴Intelligent Driver Alertness cannot provide a warning in every situation. See Owner's Manual for safety information. ²⁵Does not detect people or cargo. Always check rear seat before exiting. See Owner's Manual for safety