

1961 Corvair Lakewood Wagon



Photos after modifications, Feb 2020

1961 Lakewood Wagon

Additions and Improvements

- New Shock Absorbers all four wheels
- White Side Wall tires
- Fuel sender unit
- Brake hoses all four wheels
- Automatic Brake Adjusters
- Backup Lights
- Wire Wheel Hub caps
- Electric Fuel Pump
- Front/Rear brake shoes
- Painter cargo area Jewel Blue
- Spyder Dash with LED Lighting
- Wheel Alignment all four wheels
- Delta Mk 10 CD Ignition
- 140 hp Engine with Custom Air Cleaners
- Rebuilt torque converter
- Sound Insulation
- Tissue Dispenser
- Front/Rear Bumper Guards
- 1964 Front end Completed by PO
- FM/CD/USB Amp
- Cruise Control
- Rear Armrests
- 1962 Tail Lights
- Rebuilt Torque Converter
- New Fan Bearing
- Factory 140 Dual Exhausts with Crossover pipe
- Complete 1964 Rear Suspension and Transaxle
- Carpet including cargo mat, kick panels
- Dyed seat upholstery to match interior Jewel Blue



1961 Lakewood Wagon

Additions and Improvements

continued

- Ox Sensor and Fuel Ratio Gauge w/ selector switch
- Clarks Door panels all doors Previous Owner
- Rebuilt inside cover above tailgate
- Added tailgate scuff panel
- Steering wheel cover
- Front spoiler
- Clock with illuminated face and quarts movement.
- Modified roof rack slats to fit over roof ribs.
- Thermometer
- Converted front parking lights to come on with headlights
- Added Cargo Area light.
- Added courtesy light under radio
- Added rocker panel moldings
- Trunk light with mercury switch
- Replaced hubcap rims with wider type
- Replaced the 140 engine with a rebuilt 140 2/2020
- Added inlet extensions to the air cleaners.
- Replaced all four rear crossmember cushions.
- Replaced rear grill with a 1964 version.
- Replaced Exhaust tips.
- Replaced seat covers with 1961 Monza type
- Added 1961 Year of Manufacture Calif. license plates
- Aluminum oil pan
- Installed cargo area 4"x 6" speakers

See following photos for details of above highlights



Headlight Bezel blacked out.



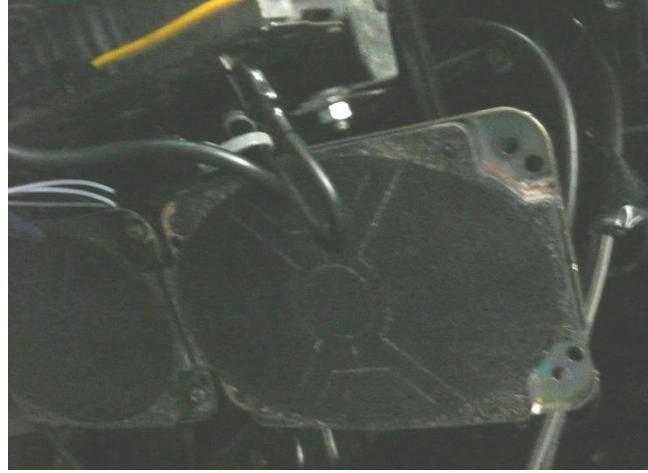
Steering wheel refinished



Backup lights installed



FM, Radio with SD card input



Dual speakers mounted behind AM radio



Left rear brake assembly no self adjusters



Left rear with self adjusters and new brake shoes



Left and Right brake assemblies with 64 backing plates and self adjusting brakes now on all four wheels.





Original instrument Cluster



Spyder Instrument Cluster



Lighter & Windshield Wiper Switch



Matching Spyder Glove Box Cover

In addition to the original speedometer and fuel gauge the new panel has trip odometer, tachometer, cylinder head temp, and manifold vacuum gauges.

Front bumper guards





Front bumper guards



Wire Wheel Covers



Tissue Dispenser





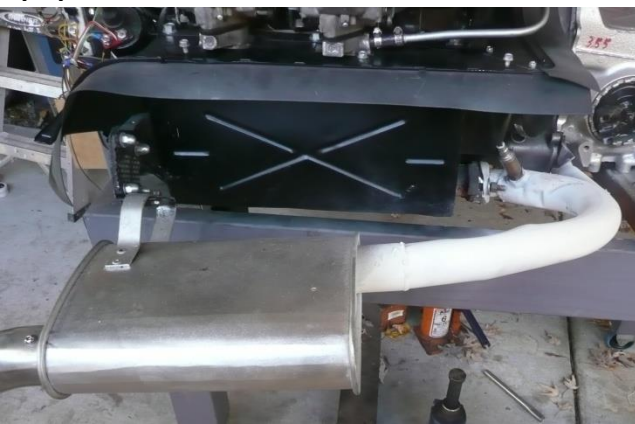
Ox Sensors right and left for Air/fuel ratio gauge.



Air/Fuel ratio gauge with r/l selector switch.



Dual exhaust with crossover pipe.





Installed a tailgate trim panel.



Installed right and left coat hooks above the rear doors.



Added a 140 insignia to the tailgate in prep for new engine. This location is consistent with the cross flags of the 102 HP insignia location. Installed 1962 Backup light lenses.



Relocated and rewired the electric fuel pump. This is required for the 140 engine. The fuel pump came with the wagon.

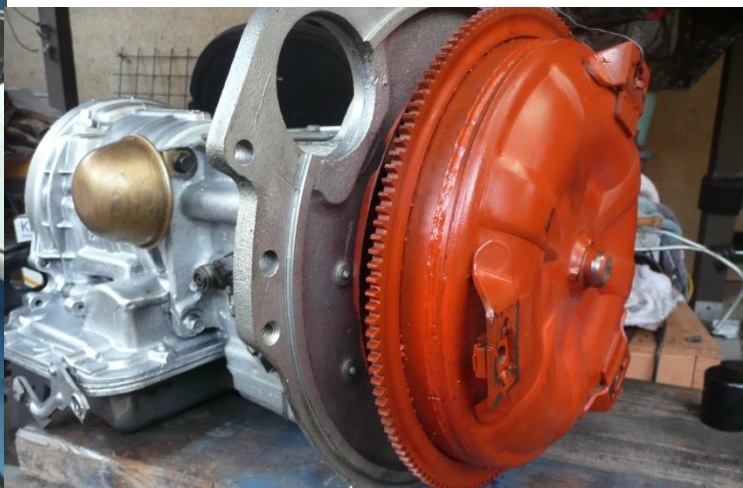


Rear seat armrests

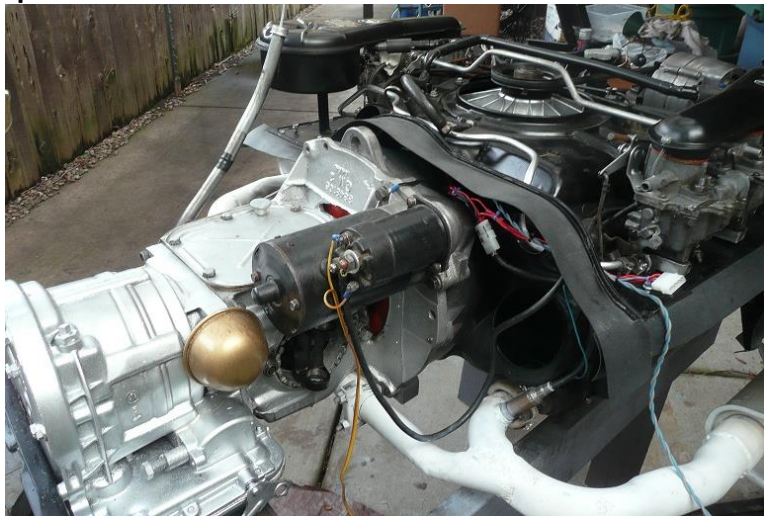
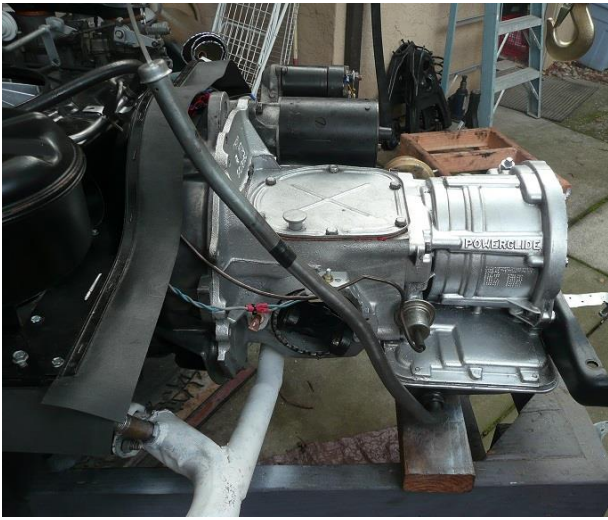
Engine hatch insulation



New Transaxle with 1964 Differential



Power train complete



Original Power train removed



New power train waiting to be installed

Engine installed





1964 Rear suspension Installed



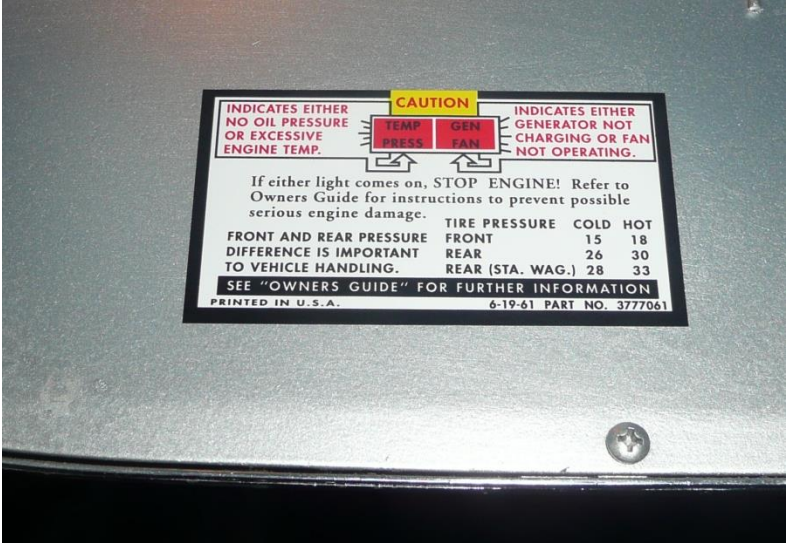
Upgrades completed 1/26/2018





Autorama February 2018
Cal Expo Sacramento CA.

Glove Box Warning Label.



The following pages describe the steps taken to quiet the interior : Stock mufflers, a crossover pipe and sound insulation is applied to lower engine noise



Cargo area carpet with jute pad below it..

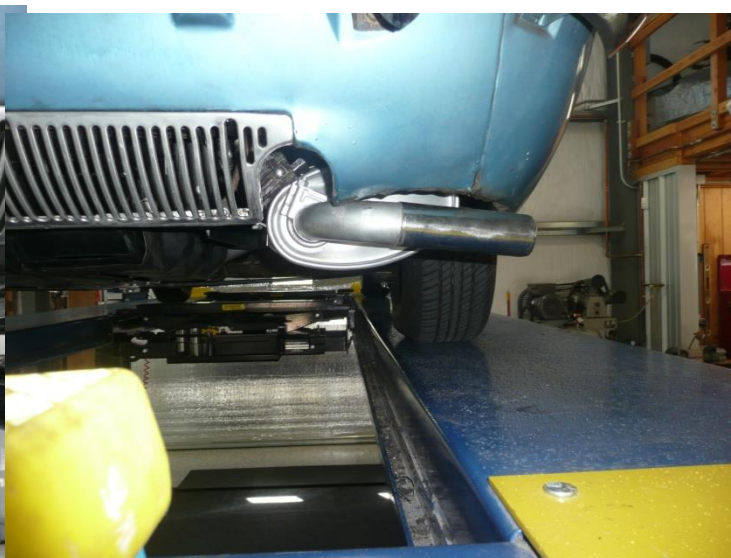


Factory 140 mufflers with heat shield





OEM Mufflers installed 4/2018





Final Tailpipe location after crossover pipe is installed.



Sound insulation installed in engine compartment





Foil and membrane insulation installed under the above locations.

Added white welting around door panels to close the gap.



You are looking at the First Place Winner in Early Closed Class 2018 Spring Fling Roseville, CA (Who would have thought it could win) A surf board and a vintage transistor radio playing surfing music was the key. The radio was a Christmas present to Marie when she was 16. There were 47 Corvair's at the event





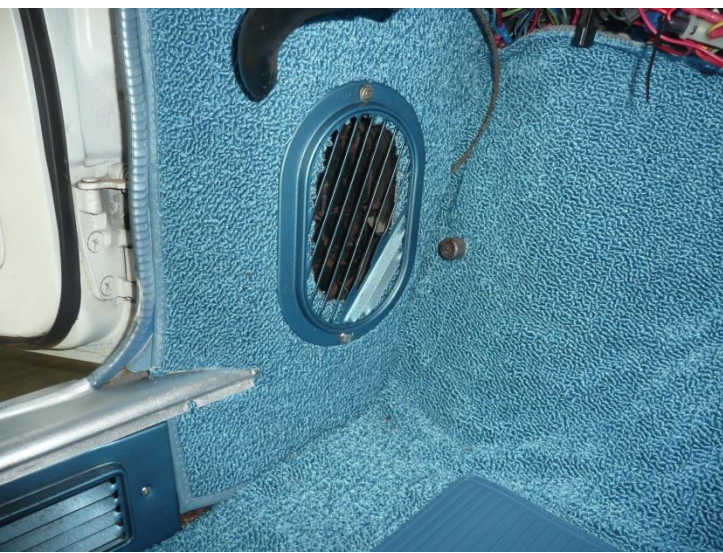
Installed Carpet on kick panels and painted vent grills blue.



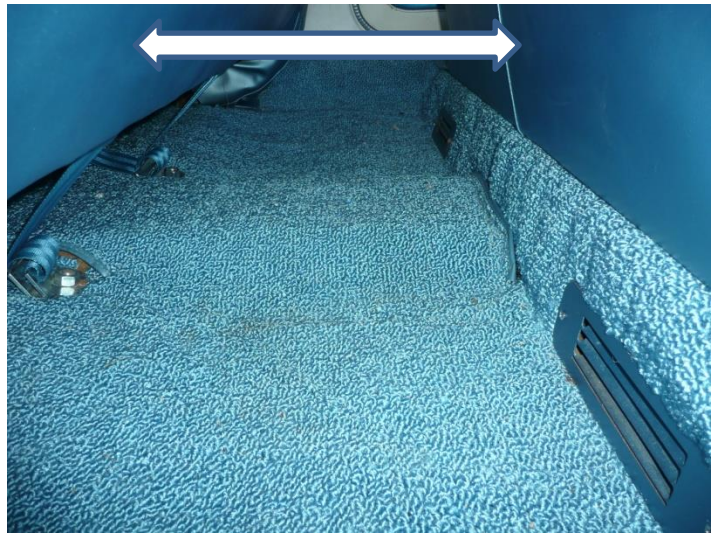
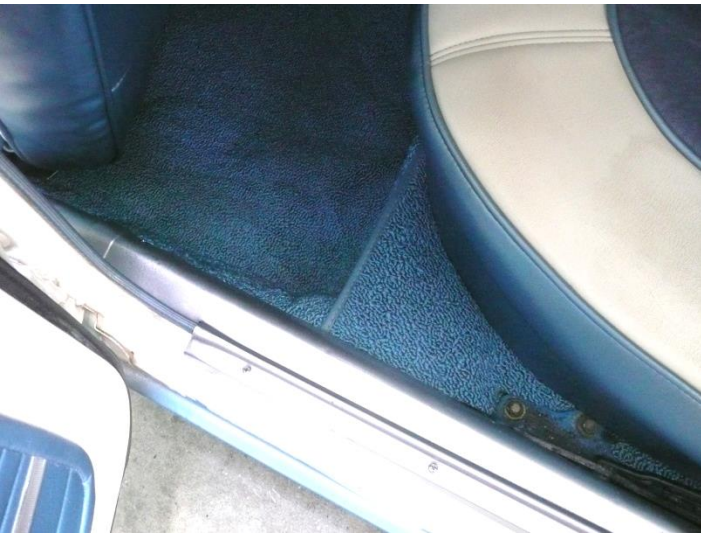
Installed "Super Bright LED lamps" in Spyder instrument panel
Zeroed the Tack pointer

New 80/20 loop carpet installed 5/2018

Painted the heater outlets blue to match the interior.



Dyed the vinyl to match the door panels and cargo bed



Dyed the vinyl a darker blue to match the door panels and cargo bed



Interior blue is "Bright Blue" or "Jewel Blue"
Cargo area side panels are now carpeted



May 30, went to local Folsom car show and won second place





The paint would not stay on the steering wheel so here is the solution.

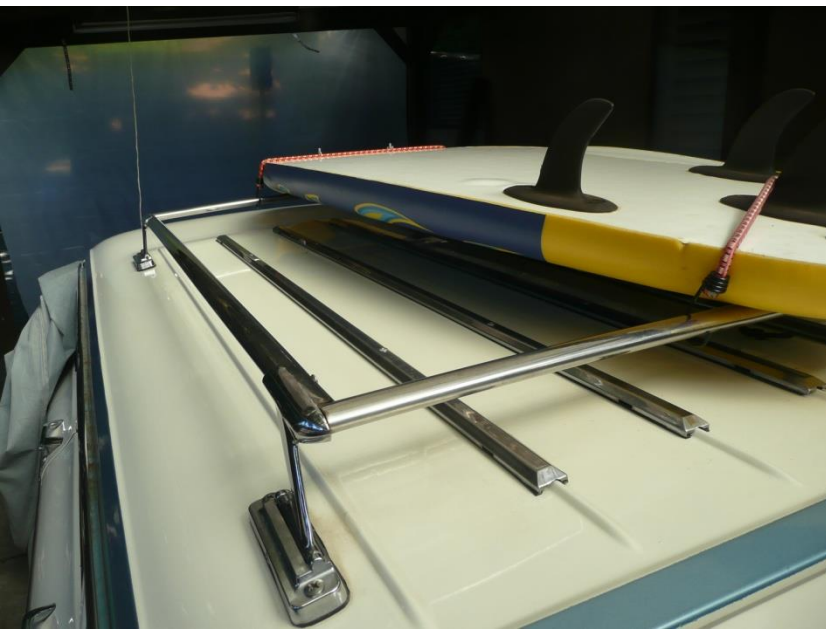


Spoiler added to improve high speed stability.





Removed roof slats and riveted them in place over the roof ribs.





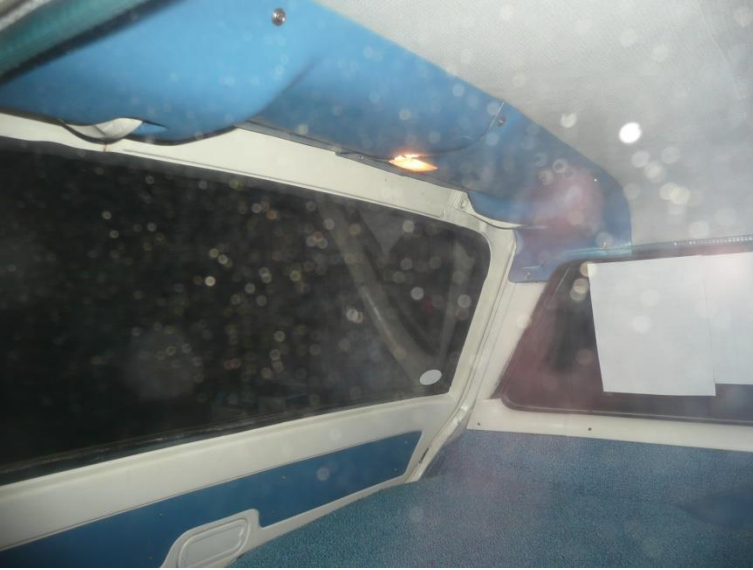
Installed a dash clock, very close to the original dealer installed model.



2018 Ironstone Concourse d' Elegance "Award of Merit" winner



Cargo area light. Turns on with dome light. Flush with headliner as to not reduce load height.





Emergency brake warning light

Inside thermometer



Additional courtesy light under dash

Engine area work light



Rocker panel moldings installed



License plate frame



Trunk light with mercury switch

5 ¼ " Custom speaker mounts with Blaupunkt 4 way speakers installed



Installed new rims on simulated wire wheel hubcaps. These extend out further and cover the wheel weights. Though they differ from the originals they solve the problem of scuffed and dented rims. These rims are made of stainless steel and can be replaced if damaged.



Rebuilt 140 installed 2/2020 Block is an T1215RN with new mains, rods, lifters and reconditioned heads. 1966 smog type heads were de-flashed. The 140 it replaced had a worn cam gears, rod and main bearings showed significant ware. Heads were reusable, pistons and cylinders were OK but not used on this build.



Autorama 2020 with rebuilt engine and new hubcap rims.



Year of Manufacture (YOM) License plates CA 1956 with 1961 sticker.



OEM 1961 Monza seat covers front and rear.



1964 Rear grill and new chrome exhaust pipe tips

Aluminum Oil Pan 1 qt additional oil





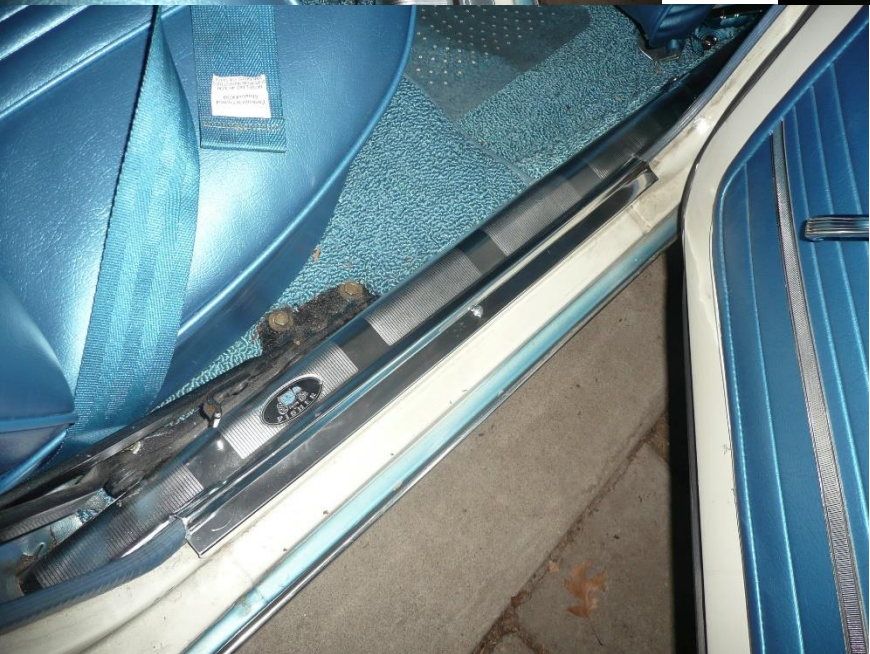
4 x 6 speakers installed in rear cargo compartment. The goal was to make the speakers as inconspicuous as possible. I believe I succeeded.



Installed window shades (VENTSHADES), these are an NOS set made in 1963



New door sills, not original but good reproductions



Backup camera





CHEVROLET MOTOR DIVISION
GENERAL MOTORS CORPORATION

Dealer To Whom Delivered
11223
S-K CHEVROLET CO
1329 VIRGINIA ST.
VALLEJO, CALIFORNIA

268507

Delivered To Dealer At
(If Different From Above)

Make
Vehicle Identification Number
10735W
CHEVROLET
159172

Final Assembly Point
YPSILANTI, MICHIGAN

Manufacturer's Suggested Retail Price: (Includes Federal Excise Tax & Suggested Dealer Delivery & Handling Charge)		
MODEL	700 LAKEWOOD WAGON	2331 00
Destination Charge		58 50
Subtotal		2389 50
Manufacturer's Suggested Retail Delivered Prices on Options and Accessories installed on this Vehicle by the Manufacturer		
936	ERMINE WHITE	00
360	POWERGLIDE AUTOMATIC TRANSMISSION	156 60
427G	PADDED DASH	16 15
120N	COMFORT CONVENIENCE GROUP	38 75
104R	AM- PUSH BUTTON RADIO	57 40
113H	DIRECT AIR HEATER	74 25
133	SIMULATED WIRE WHEEL COVERS	37 70
347	DELUX BODY EQUIPMENT	11 00
449B	700 X 12 X 2 PLY WSW	28 40
DLR	CLOCK	16 75
DLR	FRONT/REAR BUMPER GUARDS	19 50
248	REAR DOOR ARMRESTS	9 70
DLR	ROOF LUGGAGE RACK	49 50
DLR	TISSUE DISPENSOR	5 25
DLR	VENTSHADES	10 95
Factory Installed Options And Accessories		
Subtotal		531 90
Total Amount	(Does not include dealer installed options or accessories, state or local taxes or license fees)	\$ 2921 40

THIS LABEL AND THE INFORMATION THEREON HAS BEEN AFFIXED TO THIS MOTOR VEHICLE BY CHEVROLET MOTOR DIVISION, GENERAL MOTORS CORPORATION, PURSUANT TO THE REQUIREMENTS OF PUBLIC LAW 85-506, 85TH CONGRESS, WHICH PROHIBITS THE REMOVAL OR ALTERATION OF THIS LABEL PRIOR TO THE TIME THAT SUCH AUTOMOBILE IS DELIVERED TO THE ACTUAL CUSTODY AND POSSESSION OF THE ULTIMATE PURCHASER.