



LINCOLN NAVIGATOR®



2022



# A calming presence.



Quiet confidence is beyond attractive – it's powerful. Introducing the new 2022 Lincoln Navigator® luxury SUV. Redesigned with a wide array of empowering technologies, refined craftsmanship, and an even more commanding presence. Experience the intelligent evolution of the Lincoln Navigator.



Vehicle imagery throughout this brochure may be computer-generated and may include available equipment and Lincoln Accessories. 2022 Lincoln Navigator models available early 2022.

REFRESHES YOUR SPIRIT



YOUR WAY, EFFORTLESSLY



Make your drive a seamless and serene experience.

With the Lincoln Way™ App,<sup>1</sup> you are granted access

to essential information about your vehicle. What

does this afford you? Peace of mind, and a better

sense of connection when you're away from

your vehicle. Welcome to an effortless ownership

experience. Welcome to the Lincoln Way.

<sup>1</sup>Lincoln Way App, compatible with select smartphone platforms, is available via download. Message and data rates may apply.

THE LINCOLN WAY APP

Enhance your ownership experience with the

Lincoln Way™ App.<sup>1</sup> With a number of services

and benefits you can take advantage of, you'll

enjoy more time to spend on what matters most.

- Connect and control your vehicle from virtually anywhere with complimentary remote features including start/stop, lock/unlock and scheduled starts.<sup>2</sup>
- Phone As A Key<sup>3</sup> lets your smartphone act as a key fob so you won't need to carry anything else except your phone to take a trip.
- Vehicle Details make monitoring your vehicle's health, checking oil life and tire pressure effortless.
- Simply schedule your Lincoln Priority Service by setting a date, time and location for the Lincoln valet to pick up your vehicle and leave a Lincoln Loaner.<sup>4</sup>
- Earn Points toward Lincoln Priority Service and exclusive experiences with Lincoln Access Rewards.<sup>5</sup>

<sup>1</sup>Lincoln Way App, compatible with select smartphone platforms, is available via download. Message and data rates may apply. <sup>2</sup>Lincoln Connect™, the Lincoln Way App, and complimentary Connected Service are required for remote features (see Lincoln Way Terms for details). Connected service and features depend on compatible AT&T network availability. Evolving technology/cellular networks/vehicle capability may limit functionality and prevent operation of connected features. Connected service excludes Wi-Fi hotspot. <sup>3</sup>Requires feature activation. Not compatible with all mobile phones. <sup>4</sup>Complimentary Lincoln Pickup & Delivery service is available for 2017 model year and newer Lincoln vehicles with the 4-year/50,000-mile New Vehicle Limited Warranty (whichever comes first). Owners of 2016 and prior model year vehicles may arrange for the service at a cost. Mileage limitations may apply. <sup>5</sup>See your dealer for details.







As you approach, the Lincoln Navigator® dynamic signature lighting flows outward across the front and rear. Luminous welcome mats, backlit door handles, available illuminated, power-deployable running boards and the available illuminated Lincoln Star on the grille invite all inside. As you depart, the lighting flows inward, bidding you a fond farewell.

Beneath the dimensional form of the new Adaptive Pixel Projector LED headlamps lies sophisticated technology designed to detect and adjust to curves in the road and even traffic signs, effortlessly lighting your way.

The visual serenity of the available Monochromatic Package, with its unique grille and stunning 22" black aluminum wheels, is offered only on Reserve models in Infinite Black Metallic, Pristine White Metallic Tri-coat and Ceramic Pearl Metallic Tri-coat (shown).



**A bright  
outlook.**

W E L C O M E S   Y O U





A revitalizing sanctuary.

Every aspect of this serene environment is designed with you in mind. As you enter, the vehicle recalls your saved Personal Profile settings for the driver's seat, driver-assist features, audio, climate and so much more. Controls on the new 13.2" LCD touchscreen let you explore the massage patterns offered by the available 30-way Perfect Position Seats with Active Motion® – which also feature heated and ventilated settings.



ENERGIZES YOU



# A cabin that comforts all.

Treat your family to the luxurious comfort of the Lincoln Navigator® interior. The first vehicle in its class<sup>1</sup> to offer available Active Motion® massage capability in its 2nd-row seats, Navigator also features standard heat and ventilation with its 2nd-row captain's chairs. Enjoy them with your choice of a pass-through to the 3rd row or an available center console. Overhead, the available power, panoramic Vista Roof® provides skyward views as well as plenty of fresh air.

<sup>1</sup>Class is Large Traditional Premium Utility.





# Made for the journey.



Create a flat load floor by simply pressing the PowerFold® 2nd- and 3rd-row seat buttons just inside of the liftgate. You'll enjoy up to 120.2 cu. ft. of cargo space<sup>1</sup> inside of Lincoln Navigator® L models.



## TRAVELING WITH EASE

To seat up to 8, select the available 2nd-row PowerFold bench seat with heated and ventilated outboard positions, and an independently sliding middle seat. The standard hands-free liftgate lets you access the cargo area by simply kicking your foot beneath the bumper to either side of the trailer hitch. The Tiered Cargo Area Management System, included in the available Heavy-Duty Trailer Tow Package, can be positioned in any of 4 ways: as a partition, shelf, or flat load surface, or to help keep items securely inside as the liftgate opens.<sup>1</sup> Each Navigator feature is thoughtfully crafted.

<sup>1</sup>Cargo and load capacity limited by weight and weight distribution.



## VOICE-ACTIVATED SYNC® 4



### CONVERSATIONAL VOICE CONTROL

Cloud-based connectivity allows you to speak to SYNC 4<sup>1</sup> with Enhanced Voice Recognition in your normal conversational style. Select preferred “wake” words, and engage the system with a simple phrase such as “Hello, Lincoln.” Designed to quickly offer navigational routes and more, the system even lets you compose and send texts by voice.<sup>1</sup>

### CLOUD-CONNECTED NAVIGATION

The Connected Built-In Navigation System<sup>2</sup> with 3 years of complimentary service offers you the latest weather, live traffic, construction zones and parking availability. Plus, features like business hours, ratings and Points-Of-Interest information.

### DIGITAL OWNER'S MANUAL

An easy-to-search, cloud-based feature, the Digital Owner's Manual<sup>1</sup> allows you to search by key word or visual images, or even view how-to videos for many vehicle features on the SYNC 4 touchscreen while you're in Park.

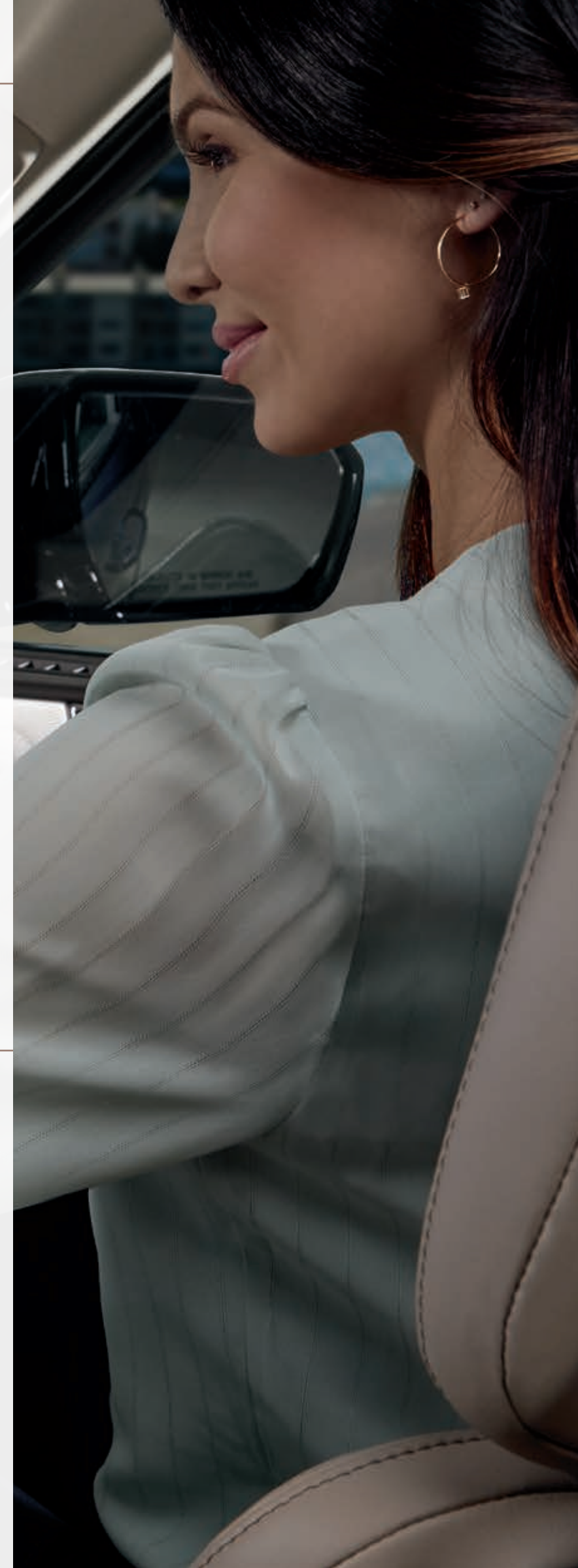
### WIRELESS PHONE CONNECTION

AppLink<sup>®</sup> with App Catalog lets you access a number of apps from your wirelessly connected phone using just your voice. You'll also enjoy wireless compatibility with Apple CarPlay<sup>®3</sup> and Android Auto.<sup>™3</sup>

### LINCOLN ENHANCE SOFTWARE UPDATES

SYNC 4 Technology and your Lincoln Navigator<sup>®</sup> model are designed to evolve through the use of Lincoln Enhance software updates. They're easy wireless updates for features, quality, experiences, capability and convenience. Many will be virtually invisible to you, while others can be scheduled on your terms, and all can take place from the comfort of home.

<sup>1</sup>Don't drive while distracted or while using handheld devices. Use voice-operated systems when possible. Some features may be locked out while the vehicle is in gear. Not all features are compatible with all phones. <sup>2</sup>Navigation services require SYNC 4 and Lincoln Connect<sup>™</sup> complimentary connect service and the Lincoln Way<sup>™</sup> App (see Lincoln Way Terms for details). Eligible vehicles receive a complimentary 3-year trial of navigation services that begins on the new vehicle warranty start date. Customers must unlock the navigation service trial by activating the eligible vehicle with a Lincoln Way member account. If not subscribed by the end of the complimentary period, the connected navigation service will terminate, and the system will revert to embedded offline navigation. Connected service and features depend on compatible AT&T network availability. Evolving technology/cellular networks/vehicle capability may limit functionality and prevent operation of connected features. Lincoln Way App, compatible with select smartphone platforms, is available via download. Message and data rates may apply. <sup>3</sup>Requires phone with active data service and compatible software. SYNC 4 does not control 3rd-party products while in use. 3rd parties are solely responsible for their respective functionality.







#### ENGAGE WITH ELEVATED AUDIO

The standard 14-speaker Revel® and newly available 28-speaker Revel Ultima 3D Audio Systems deliver finely crafted sound in full. Revel Ultima 3D (below) features 8 new speakers embedded in the headliner for a truly elevated experience. Both systems feature personalized listening modes like “Stereo,” “Audience” and “On Stage,” offering you the freedom to experience different levels of sound immersion. Outstanding, multi-dimensional sound is courtesy of advanced cabin correction tuning, QuantumLogic® Surround sound technology and Revel Waveguides. You won’t just hear the level of precision and musical accuracy – you’ll feel it.

#### SOUND THAT STAYS WITH YOU

With a variety of premium entertainment, innovative features that make discovery easy, and a personalized experience for every driver, SiriusXM® with 360L<sup>1</sup> is unlike any other entertainment experience you’ve had in a vehicle. Plus, with a Platinum Plan trial or paid subscription, drivers can enjoy the best of SiriusXM in the vehicle, on their phone with the SiriusXM app, and at home on compatible connected devices.



The wireless charging pad<sup>2</sup> lets you keep devices charged clutter-free – without any cords.



Lincoln Connect™<sup>3</sup> enables a 4G LTE Wi-Fi hotspot connection for up to 10 devices at once.<sup>4</sup>

<sup>1</sup>Trial length and service availability may vary by model, model year or trim. Radio features, content and display may vary by vehicle. Some features may not be available while driving. Your trial subscription will automatically stop at the end of your trial period. Subscriptions offered and sold separately by SiriusXM for continued use after trial. Services are subject to the SiriusXM Customer Agreement and Privacy Policy available at [siriusxm.com](http://siriusxm.com) which includes complete terms and how to cancel which includes online methods or calling 1-866-635-2349. All fees, content and features are subject to change. <sup>2</sup>Qi wireless charging may not be compatible with all mobile phones. <sup>3</sup>Lincoln Connect, the Lincoln Way App, and complimentary Connected Service are required for remote features (see Lincoln Way Terms for details). Connected service and features depend on compatible AT&T network availability. Evolving technology/cellular networks/vehicle capability may limit functionality and prevent operation of connected features. Connected service excludes Wi-Fi hotspot. <sup>4</sup>Don't drive distracted or while using handheld devices. Use voice controls.







AVAILABLE LINCOLN CO-PILOT360 2.0 DRIVE

ActiveGlide hands-free highway driving technology

AVAILABLE LINCOLN CO-PILOT360 2.0 TOWING

Included only with available Heavy-Duty Trailer Tow Package:

Pro Trailer Backup Assist™ 2.0

Trailer Reverse Guidance

AVAILABLE HANDS-FREE ACTIVEGLIDE

The new 2022 Navigator is the first Lincoln vehicle to offer available ActiveGlide<sup>1,2</sup> – our new driver-assist technology that builds upon Intelligent Adaptive Cruise Control with Stop-and-Go, Lane Centering Assist and Speed Sign Recognition. ActiveGlide allows you to operate the vehicle hands-free, while being monitored by a driver-facing camera to make sure you're keeping your eyes on the road. This feature is compatible on prequalified sections of divided highways called Hands-Free Blue Zones that make up over 130,000 miles of North American roads.

Confidence comes standard with our extensive collection of driver-assist technologies.<sup>1</sup> They utilize a network of sensors and sophisticated cameras to offer support in many scenarios, helping you feel confident in your Lincoln Navigator® luxury SUV.

STANDARD LINCOLN CO-PILOT360™ 2.0

Auto High-Beam Headlamps

Blind Spot Information System with Cross-Traffic Alert and Trailer Coverage

Evasive Steering Assist

Intelligent Adaptive Cruise Control with Stop-and-Go, Lane Centering Assist and Speed Sign Recognition

Lane-Keeping System with Blind Spot Assist: includes Lane-Keeping Aid, Lane-Keeping Alert, Driver Alert System and Road-Edge Detection

Pre-Collision Assist with Automatic Emergency Braking (AEB): includes Pedestrian Detection, Distance Indication and Alert, Dynamic Brake Support, Forward Collision Warning, Intersection Assist and Post-Collision Braking

STANDARD LINCOLN CO-PILOT360 2.0 VISION

360-Degree Camera with Rear Camera Washer

Active Park Assist 2.0

Front/Side/Rear Parking Sensors

Reverse Brake Assist

<sup>1</sup>Driver-assist features are supplemental and do not replace the driver's attention, judgment and need to control the vehicle. It does not replace safe driving. See Owner's Manual for details and limitations. <sup>2</sup>ActiveGlide is a hands-free highway driving feature. Only remove hands from the steering wheel when in a Hands-Free Blue Zone. Always watch the road and be prepared to resume control of the vehicle.





# An empowering wealth of possibilities.

Lincoln Drive Modes put the power to adapt right at your fingertips. Simply turn the knob to select your mode: Normal, Conserve, Excite, Slippery, Deep Conditions and available Slow Climb.<sup>4</sup> Beautiful animations on the digital instrument cluster help you make your choice, and the system adjusts automatically to improve your drive.



EMBRACE EACH MOMENT



## TWIN-TURBOCHARGED 3.5-LITER V6

Every Lincoln Navigator<sup>®</sup> model is powered by the Twin-Turbocharged 3.5-liter V6 engine paired with a 10-speed SelectShift<sup>®</sup> automatic transmission. Advanced towing technologies such as the newly available Trailer Reverse Guidance and Pro Trailer Backup Assist<sup>™</sup> 2.0 can help you make the most of the powertrain's considerable capabilities.

440 HORSEPOWER<sup>1,2</sup>

510 LB.-FT. OF TORQUE<sup>1,2</sup>

8,700-LB. MAX. TOWING CAPACITY<sup>2,3</sup>

## GLIDE EFFORTLESSLY

To help you feel calmly in command, Navigator features standard Adaptive Suspension with new Road Preview. It uses a front camera to evaluate and monitor the road ahead. When an upcoming bump in the road is detected, the system prepares the suspension to help lessen the impact on both the vehicle and your comfort.

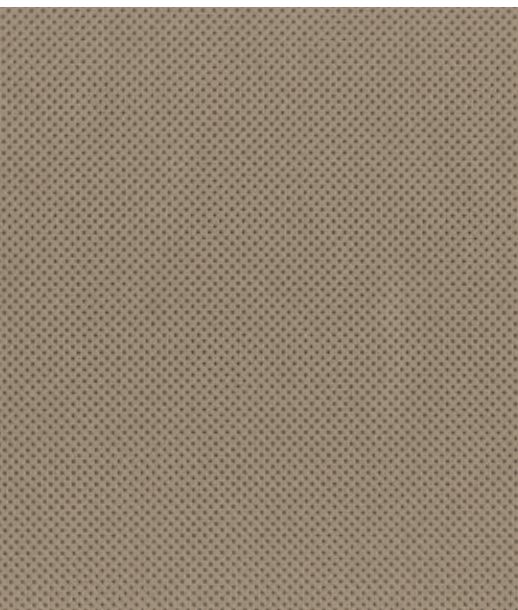
<sup>1</sup>Horsepower and torque ratings based on premium fuel per SAE J1349<sup>®</sup> standard. Your results may vary. <sup>2</sup>Horsepower, torque and towing are independent attributes and may not be achieved simultaneously. <sup>3</sup>Max. towing of 8,700 lbs. on Navigator RWD with the available Heavy-Duty Trailer Tow Package (shown); max. towing of 8,400 lbs. on Navigator L RWD with the available Heavy-Duty Trailer Tow Package (not shown). Max. towing varies based on cargo, vehicle configuration, accessories and number of passengers. <sup>4</sup>When equipped with the available Heavy-Duty Trailer Tow Package and 4WD.





Black Onyx  
Navigator/Navigator Reserve 1-7

Santos Rosewood



Sandstone  
Navigator/Navigator Reserve 1-7

Espresso Ash Swirl

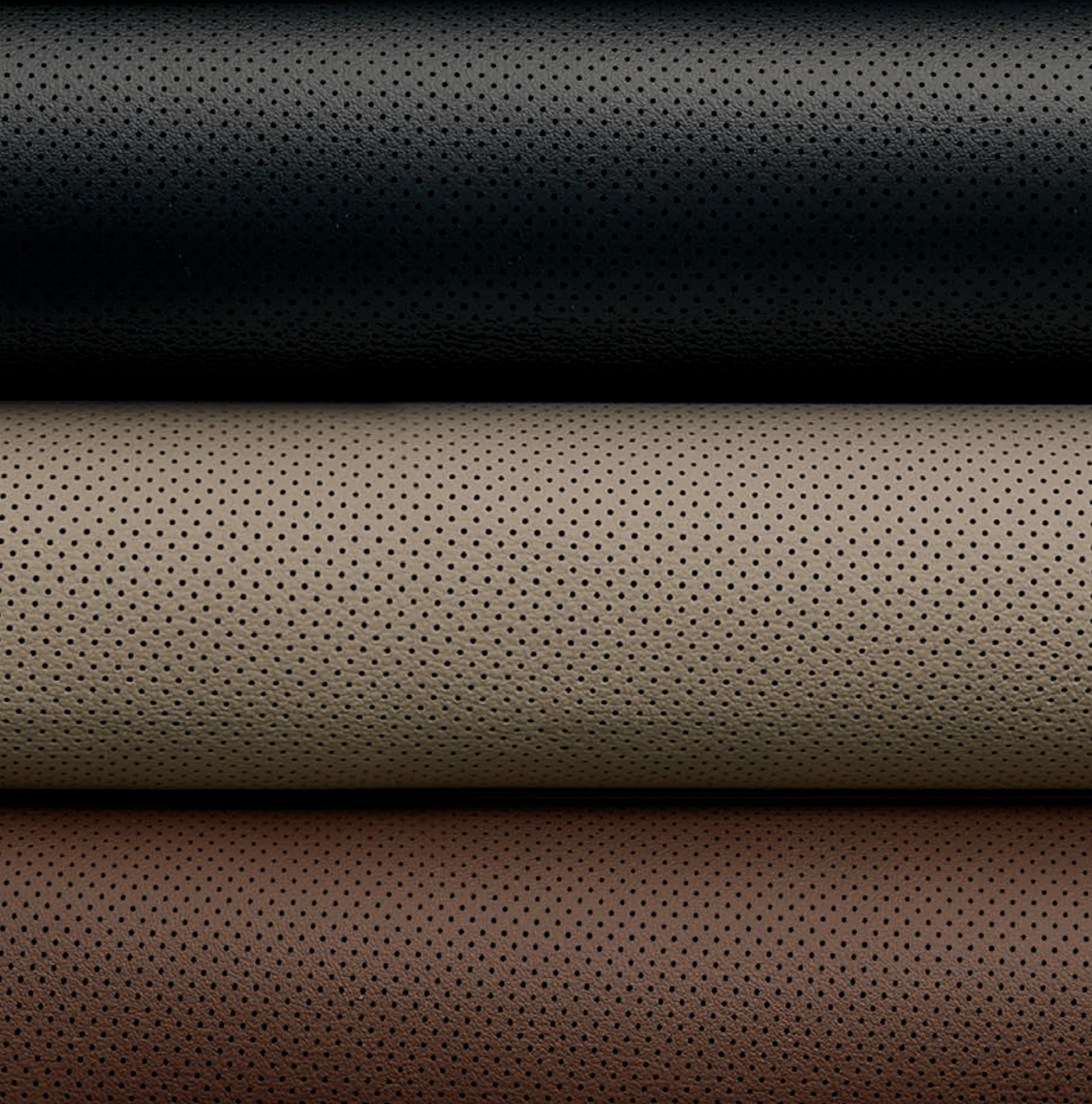


Roast  
Navigator Reserve 1-7

Santos Rosewood

### INTERIOR CRAFTSMANSHIP

While creating each distinctive Lincoln Navigator® interior environment, our designers commit themselves to craftsmanship that goes beyond what can be seen. They pour their passion for every detail into each collection of materials, accent trims, and colors – all to ensure every model provides our signature feeling of sanctuary.

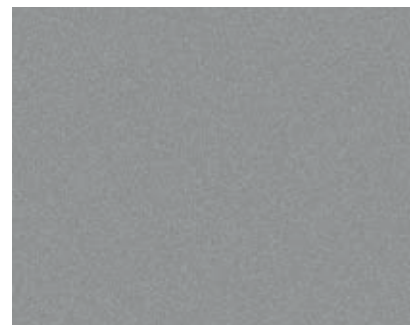


Exterior and interior colors shown are representative only.

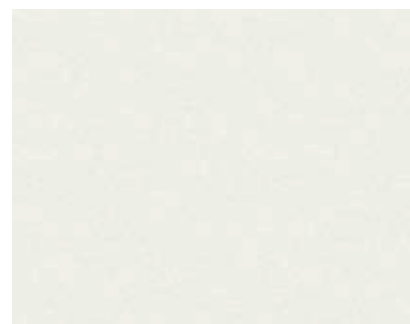
<sup>1</sup>Additional charge.



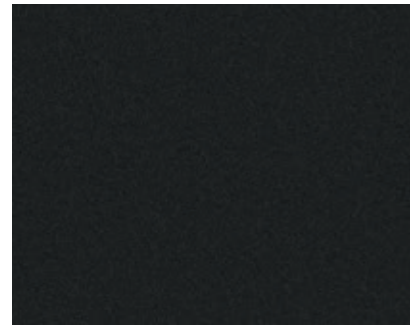
1. Infinite Black Metallic



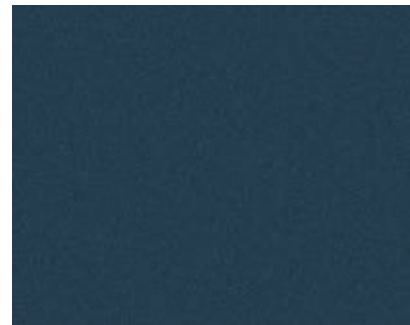
2. Silver Radiance Metallic



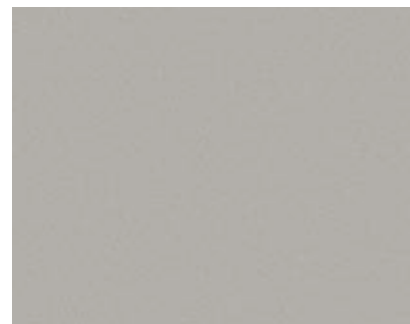
3. Pristine White Metallic Tri-coat<sup>1</sup>



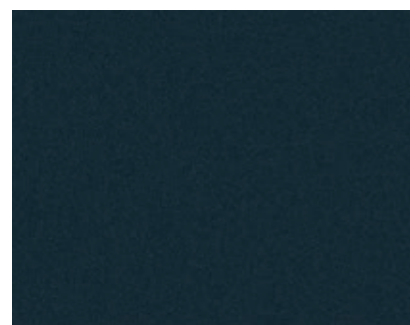
4. Starlight Gray Metallic<sup>1</sup>



5. Ocean Drive Blue Metallic Tinted Clearcoat<sup>1</sup>



6. Ceramic Pearl Metallic Tri-coat<sup>1</sup>



7. Flight Blue Metallic<sup>1</sup>



## STANDARD FEATURES

### PERFORMANCE & HANDLING

3.73:1 rear axle ratio

10-speed automatic transmission with SelectShift® capability and paddle activation

Active Grille Shutters

Adaptive Suspension with Road Preview

Dual exhaust with bright tips

Electric parking brake

Lincoln Drive Modes: Normal, Conserve, Excite, Slippery and Deep Conditions

Side-wind stabilization

**Trailer Tow Prep Package:** Class IV with 4-/7-pin wiring connectors, Smart Trailer Tow and Trailer Sway Control

### LINCOLN CO-PILOT360™ 2.0

Auto High-Beam Headlamps

Blind Spot Information System with Cross-Traffic Alert and Trailer Coverage

Evasive Steering Assist

Intelligent Adaptive Cruise Control with Stop-and-Go, Lane Centering Assist and Speed Sign Recognition

Lane-Keeping System with Blind-Spot Assist (includes Lane-Keeping Aid, Lane-Keeping Alert, Driver Alert System and Road-Edge Detection)

Pre-Collision Assist with Automatic Emergency Braking (AEB) (includes Pedestrian Detection, Distance Indication and Alert, Dynamic Brake Support, Forward Collision Warning, Intersection Assist and Post-Collision Braking)

### LINCOLN CO-PILOT360 2.0 VISION

360-Degree Camera with Rear Camera Washer

Active Park Assist 2.0

Front/Side/Rear Parking Sensors

Reverse Brake Assist

### DRIVER-ASSIST TECHNOLOGY

Auto Hold

Autolamp (Automatic On/Off Headlamps)

Hill Descent Control™ (4WD only)

Hill Start Assist

Rain-Sensing Windshield Wipers

### DRIVER CONTROLS

Leather- and wood-trimmed, heated steering wheel with controls for audio and cruise

Personal Profiles (memory settings for positions of driver's seat, sideview mirrors, power-adjustable pedals, driver-assist features, audio, climate and displays)

Power-tilt/-telescoping steering column with memory

Power windows with one-touch-up/-down feature

Remote Start System

Tri-zone electronic automatic temperature control with rear auxiliary controls and vents

Universal garage door opener

### INTERIOR

1st-row center floor console with winged armrest

1st-row overhead console with sunglasses holder and conversation mirror

1st- and 2nd-row carpeted floor mats

2nd- and 3rd-row fast-charging USB ports

3rd-row PowerFold® 60/40 split bench seat with power recline

12" configurable LCD instrument cluster

12V powerpoints (4)

110V/150W AC power outlet

Ambient lighting

Auto-dimming, frameless rearview mirror

Cargo Management System

Enhanced Active Noise Control

Illuminated front door-sill scuff plates

Symphonic Chimes

Wireless charging pad in 1st-row center console media bin

### EXTERIOR

Adaptive Pixel Projector LED headlamps with signature lighting, predictive curve lighting, and sign-based lighting

Chrome roof-rack side rails

Hands-free liftgate with obstacle detection sensor

LED daytime running lamps, fog lamps and taillamps

Lincoln Embrace: LED-illuminated exterior door handle pockets, Lincoln Approach Detection System, Lincoln logo illuminated welcome mats, and Lincoln Signature Lighting with fade on/off

Power-adjustable, autofold, heated sideview mirrors with integrated LED turn signal indicators, memory, auto-dimming driver's side, and black caps

### CONNECTIVITY & ENTERTAINMENT

Connected Built-In Navigation System with pinch-to-zoom capability, live traffic, predictive destinations, route guidance, and 3 years of complimentary service<sup>1</sup>

Lincoln Connect™<sup>2</sup> with 4G LTE Wi-Fi hotspot capability<sup>3</sup>

Phone As A Key<sup>4</sup>

Revel® Audio System with 14 speakers; includes HD Radio™ Technology

SiriusXM® with 360L with 3-month Platinum Plan trial subscription<sup>5</sup>

SYNC® 4 with Enhanced Voice Recognition, 13.2" LCD capacitive touchscreen, conversational voice command recognition, cloud connectivity, wireless phone connection, 911 Assist®, AppLink® with App Catalog, wireless Apple CarPlay® compatibility, wireless Android Auto™ compatibility, and Digital Owner's Manual

### SAFETY & SECURITY

Personal Safety System™ for driver and front passenger with dual-stage front airbags<sup>6</sup>

Front-seat side airbags<sup>6</sup>

Safety Canopy® side-curtain airbags<sup>6</sup> with rollover sensor

AdvanceTrac™ with RSC® (Roll Stability Control™)

Enhanced security (Passive Anti-Theft System, perimeter alarm, and intrusion and inclination sensors)

Individual Tire Pressure Monitoring System (excludes spare)

LATCH (Lower Anchors and Tether Anchors for Children)

MyKey® technology to help encourage responsible driving

SecuriCode® invisible keypad

SOS Post-Crash Alert System™

## NAVIGATOR®

### NAVIGATOR RESERVE

● Standard ○ Optional ■ Packaged

● ● **Twin-Turbocharged 3.5-liter V6 with Auto Start-Stop Technology**  
440 hp @ 5,850 rpm<sup>7,8</sup> 510 lb.-ft. of torque @ 3,000 rpm<sup>7,8</sup>

● ● Rear-wheel drive (RWD)

○ ○ 4-wheel drive (4WD)

● 1st-row auto-heated and -ventilated Comfort captain's chairs with 10-way power adjustability

● Ebony power-deployable running boards

● Lincoln Soft Touch seats

● ● 2nd-row heated and ventilated captain's chairs with PowerFold and pass-through to 3rd row

■ ● Ebony power-deployable, illuminated running boards

■ ● Power, panoramic Vista Roof® with power sunshade

● ● **Lincoln Co-Pilot360 2.0 Drive:** ActiveGlide hands-free highway driving technology

● 1st- and 2nd-row premium leather seating surfaces; 3rd-row Lincoln Soft Touch seat

● 1st-row auto-heated and -ventilated Perfect Position Seats with 24-way power adjustability including head restraints

● 1st-row passenger-seat memory

● Head-Up Display

○ **Equipment Collection 201A: Luxury Package:** 1st-row auto-heated and -ventilated Perfect Position Seats with Active Motion® massage functionality and 30-way power adjustability including thigh extenders and head restraints; Revel Ultima 3D Audio System with 28 speakers; illuminated Lincoln Star on grille; and 1st- and 2nd-row illuminated safety belt buckles

○ **Navigator Plus Exterior Package:** 22" bright-machined aluminum wheels with premium-painted pockets; power, panoramic Vista Roof with power sunshade; and Ebony power-deployable, illuminated running boards

○ **Heavy-Duty Trailer Tow Package:** Class IV with 4-/7-pin wiring connectors, front tow hooks, Smart Trailer Tow, Tiered Cargo Area Management System, Trailer Brake Controller (TBC), Trailer Sway Control and **Lincoln Co-Pilot360 2.0 Towing:** Pro Trailer Backup Assist™ 2.0 and Trailer Reverse Guidance (4WD models include 2-speed transfer case which adds Slow Climb to Lincoln Drive Modes)

○ **Monochromatic Package:** 22" black aluminum wheels, body-color sideview mirror caps, and monochromatic grille and side badging (available only with Infinite Black Metallic, Pristine White Metallic Tri-coat and Ceramic Pearl Metallic Tri-coat)

## NAVIGATOR

### NAVIGATOR RESERVE

○ ○ 2nd-row 40/20/40 split-folding bench seat with PowerFold, outboard heat and ventilation, and sliding middle section

○ ○ Floor liners in 1st and 2nd rows (deletes standard 1st- and 2nd-row carpeted floor mats)

○ ○ Floor liners in 1st and 2nd rows<sup>9</sup> (includes standard 1st- and 2nd-row carpeted floor mats)

○ ○ Reversible cargo area mat

○ ○ Roof-rack crossbars

○ 2nd-row heated and ventilated captain's chairs with PowerFold and 2nd-row center console with 5.8" LCD touchscreen and multimedia audio controls

○ 2nd-row heated and ventilated seats with Active Motion massage functionality<sup>10</sup>

○ 2nd-row heated and ventilated seats with Active Motion massage functionality and 2nd-row center console with 5.8" LCD touchscreen and multimedia audio controls<sup>10</sup>

○ Electronic traction assist

### WHEELS

● **A:** 20" 12-spoke bright-machined aluminum with painted pockets

■ ● **B:** 22" bright-machined aluminum with premium painted pockets

○ **C:** 22" 12-spoke bright-machined aluminum with Ebony Black-painted pockets

■ **D:** 22" black aluminum

### SEATING

2nd-row configurations: Navigator/Navigator L

#### 7-passenger seating

Captain's chairs with pass through  
Standard: Navigator/Navigator Reserve

Captain's chairs with center console  
Optional: Navigator Reserve

#### 8-passenger seating

40/20/40 bench seat

Optional

## LINCOLN ACCESSORIES

### ELECTRONICS

Dash cam systems<sup>11</sup>

Remote Start System

Vehicle security systems

### EXTERIOR

Full vehicle covers<sup>11</sup>

Hitch shackle kit<sup>11</sup>

Locking fuel plug

Racks and carriers<sup>11,12</sup>

Roof crossbars<sup>12</sup>

Side window deflectors<sup>11</sup>

Splash guards

Sportz® tent<sup>11</sup>

Trailer towing accessories

Wheel lock kits

### INTERIOR

Ash cup/coin holders

Battery jump-start systems<sup>11</sup>

Cargo area protectors

Carpeted floor mats

Custom UVS100® sunscreen<sup>11</sup>

First aid and roadside assistance kits<sup>11</sup>

Floor liners

Mini-fridge, portable<sup>11</sup>

Protective pet seat covers<sup>11</sup>

Soft cargo cooler bag

Soft cargo organizers (large and standard sizes)

**Shop the complete collection at accessories.lincoln.com**

## DIMENSIONS

	Navigator	Navigator L
Wheelbase	122.5"	131.6"
Length	210.0"	221.9"
Height	RWD	76.4"
	4WD	76.3"
		76.2"
Width	includes mirrors	93.8"
	mirrors folded	83.6"
		93.8"
Head room	1st row (max.)	41.8"
	2nd row	40.0"
	3rd row	37.3"
Leg room	1st row (max.)	43.9"
	2nd row	41.1"
	3rd row	36.1"
Hip room	1st row	61.9"
	2nd row	61.6"
	3rd row	51.4"
Shoulder room	1st row	65.2"
	2nd row	65.1"
	3rd row	64.3"
Cargo volume (cu. ft.)	1st row (behind)	103.3
	2nd row (behind)	57.5
	3rd row (behind)	19.3
Max. towing capacity (lbs.) <sup>8,13</sup>	RWD	8,700
	4WD	8,300
		8,100
Fuel tank (gal.)	23.6	27.8

### EPA-estimated fuel economy ratings expected early 2022



Scan this code to build and price a new Navigator. Data rates may apply.



A



B



C



D

Lincoln Original Accessories will be warranted for whichever provides you the greatest benefit: 24 months/unlimited mileage, or the remainder of your Bumper-to-Bumper 4-year/50,000-mile (whichever comes first) New Vehicle Limited Warranty. Lincoln Licensed Accessories (LLA) are warranted by the accessory manufacturer's warranty. LLA are designed and developed by the accessory manufacturer and have not been designed or tested to Ford Motor Company engineering requirements. Contact your Lincoln Dealer for details and/or a copy of all limited warranties.

Lincoln, Navigator and the Lincoln emblem, 911 Assist, Active Motion, AdvanceTrac, AppLink, Hill Descent Control, Lincoln Access Rewards, Lincoln Co-Pilot360, Lincoln Connect, Lincoln Protect, Lincoln Way, MyKey, Personal Safety System, PowerFold, Pro Trailer Backup Assist, Roll Stability Control, RSC, Safety Canopy, SecuriCode, SelectShift, SOS Post-Crash Alert System, SYNC, Vista Roof and related marks are trademarks of Ford Motor Company.

Android Auto is a trademark of Google LLC. Apple CarPlay is a trademark of Apple Inc., registered in the U.S. and other countries. "HD Radio" and the HD Radio logo are proprietary trademarks of iBiquity Digital Corporation. QuantumLogic, Revel and the Revel logo are trademarks of HARMAN International Industries, registered in the United States and other countries. SiriusXM, Pandora and all related logos are trademarks of Sirius XM Radio Inc. and its respective subsidiaries.

<sup>1</sup>Navigation services require SYNC 4 and Lincoln Connect, complimentary connect service and the Lincoln Way App (see Lincoln Way Terms for details). Eligible vehicles receive a complimentary 3-year trial of navigation services that begins on the new vehicle warranty start date. Customers must unlock the navigation service trial by activating the eligible vehicle with a Lincoln Way member account. If not subscribed by the end of the complimentary period, the connected navigation service will terminate, and the system will revert to embedded offline navigation. Connected service and features depend on compatible AT&T network availability.

Evolving technology/cellular networks/vehicle capability may limit functionality and prevent operation of connected features. Lincoln Way App, compatible with select smartphone platforms, is available via download. Message and data rates may apply. <sup>2</sup>At purchase, the Lincoln Connect modem is connected and sending vehicle data (e.g., diagnostics) to Lincoln. To disable, or for more information, see in-vehicle connectivity settings. Learn more at www.Connectedlincoln.com. Lincoln Connect, the Lincoln Way App and complimentary Connected Service are required for remote features (see Lincoln Way Terms for details). Connected service and features depend on compatible AT&T network availability. Evolving technology/cellular networks/vehicle capability may limit functionality and prevent operation of connected features. Connected service excludes Wi-Fi hotspot. <sup>3</sup>Wi-Fi hotspot includes complimentary wireless data trial that begins upon AT&T activation and expires at the end of 3 months or when 3GB of data is used, whichever comes first. To activate, go to www.att.com/lincoln. <sup>4</sup>Requires feature activation. Not compatible with all mobile phones. <sup>5</sup>Trial length and service availability may vary by model, model year or trim. Radio features, content and display may vary by vehicle. Some features may not be available while driving. Your trial subscription will automatically stop at the end of your trial period. Subscriptions offered and sold separately by SiriusXM for continued use after trial. Services are subject to the SiriusXM Customer Agreement and Privacy Policy available at siriusxm.com which includes complete terms and how to cancel which includes online methods or calling 1-866-635-2349. All fees, content and features are subject to change. <sup>6</sup>Always wear your safety belt and secure children in the rear seat. <sup>7</sup>Horsepower and torque ratings based on premium fuel per SAE J1349® standard. Your results may vary. <sup>8</sup>Horsepower, torque and towing are independent attributes and may not be achieved simultaneously. <sup>9</sup>Do not place additional floor mats or any other covering on top of the original floor mats. <sup>10</sup>Restrictions may apply. See your dealer for details. <sup>11</sup>Lincoln Licensed Accessory. <sup>12</sup>Consult Owner's Manual for details on roof-rack load limits. <sup>13</sup>When equipped with the available Heavy-Duty Trailer Tow Package. Max. towing varies based on cargo, vehicle configuration, accessories and number of passengers.





Scan this code to request your virtual Lincoln Showcase tour.  
Data rates may apply.

## LINCOLN SHOWCASE

Experience an exclusive, all-virtual vehicle tour from the comfort of your home. Lincoln Showcase is a great way to get to know your Lincoln vehicle on a whole new level. Explore new technologies and features remotely with a knowledgeable product specialist who can answer any question you may have.

## LINCOLN PROTECT® EXTENDED SERVICE PLANS

Whether you purchase or lease your Lincoln, Lincoln Protect offers peace of mind with a variety of plans for vehicle component and maintenance coverage. Plans fully backed by Lincoln are honored at all Lincoln dealerships in the U.S., Canada and Mexico.

## ROADSIDE ASSISTANCE FOR LIFE

We'll be there for you as long as you own your Lincoln – with 24-hour/7-day-a-week assistance nationwide. Lifetime coverage provided for the original owner only; second and subsequent owners receive coverage for 6 years/70,000 miles (whichever comes first) from original date of sale. Please see your dealer for complete details.

## LINCOLN AUTOMOTIVE FINANCIAL SERVICES

Whether you decide to purchase or lease, you'll find a plan designed to fit your individual needs. Visit [Lincoln.com/finance](http://Lincoln.com/finance) or your Lincoln Showroom to explore your financing options.

## NEW VEHICLE LIMITED WARRANTY

Your new Lincoln has the following coverage: 4-year/50,000-mile bumper-to-bumper coverage (whichever comes first), 6-year/70,000-mile powertrain coverage (whichever comes first), 5-year/60,000-mile safety restraint coverage (whichever comes first), and 5-year/unlimited-mile corrosion perforation (aluminum panels do not require perforation) coverage (whichever comes first). Please ask your dealer for a copy of these limited warranties.

## LINCOLN MOTOR COMPANY INSURE

Insurance that lets you earn discounts for safe driving, offering a maximum discount of 40% off your auto insurance. Lincoln Motor Company Insure works with your 2022 model-year Lincoln to gauge your driving habits and calculate a discount based on how you drive. Visit [www.lincolnmotorcompanyinsure.com](http://www.lincolnmotorcompanyinsure.com) to learn more.

American Road Services Company LLC (a Lincoln affiliate) is the licensed insurance agency offering Lincoln Motor Company Insure, which is underwritten by Nationwide Mutual Insurance Company and affiliates. Home Office: Columbus, OH. Lincoln Motor Company and Lincoln Automotive Financial Services are not insurance companies or agents. Subject to underwriting guidelines, review and approval. Details and availability varies; program criteria differ in California. Discounts do not apply to all coverage elements; actual savings vary by state, coverage selections, rating factors and policy changes.

Comparisons based on competitive models (class is Large Traditional Premium Utility), publicly available information and Lincoln certification data at time of release. Vehicles may be shown with optional equipment. Features may be offered only in combination with other options or subject to additional ordering requirements/limitations. Dimensions shown may vary due to optional features and/or production variability. Information is provided on an "as is" basis and could include technical, typographical or other errors. Lincoln makes no warranties, representations, or guarantees of any kind, express or implied, including but not limited to, accuracy, currency, or completeness, the operation of the information, materials, content, availability, and products. Lincoln reserves the right to change product specifications, pricing and equipment at any time without incurring obligations. Your Lincoln Dealer is the best source of the most up-to-date information on Lincoln vehicles.