

I.18.20 Early 20th Century Design

RAGO



I. ROOKWOOD: THE PRITSKER COLLECTION  
II. EARLY 20TH CENTURY DESIGN  
III. MODERN DESIGN

18 JANUARY 11 AM  
18 JANUARY 1 PM  
19 JANUARY 11 AM

RAGO



## Early 20th Century Design 18 January 2020

### PREVIEW

11 January 12–5 pm  
12 January 12–3:30 pm  
13–17 January 12–5 pm or by appointment

### RAGO AUCTIONS

333 North Main Street  
Lambertville, NJ 08530  
ragoarts.com

150

**FREDERICK HURTEN RHEAD  
FOR UNIVERSITY CITY**  
exceptional vase with stylized trees

USA, 1910–11  
incised and matte-glazed earthenware  
7½ h × 2 dia in (19 × 5 cm)  
Numbered to underside 'No 3'.  
Incised signature to underside 'UC AWL'.

**PROVENANCE:** Private Collection, New York  
**\$10,000–15,000**





151

**FREDERICK HURTEN RHEAD  
FOR AREQUIPA POTTERY  
vase with leaves**

USA, 1911–13  
glazed squeezebag-decorated earthenware  
8¼ h × 3½ dia in (21 × 9 cm)  
Glazed signature and number to underside  
'Arequipa California 2128' with pot under tree.  
**\$5,000–7,000**



152

**FREDERICK HURTEN RHEAD  
FOR ROSEVILLE POTTERY  
exceptional tall Della Robbia vase with courtier**

USA, 1906–07 | glazed earthenware  
18 h × 5½ dia in (46 × 14 cm)  
Paper manufacturer's label to underside  
'Rozane Ware'. Incised signature near base 'KD'.  
**PROVENANCE:** Rago Auctions  
Private Collection, New York  
**\$9,000–12,000**







153

**FREDERICK HURTEN RHEAD  
FOR JERVIS POTTERY  
vase with stylized trees**

USA, 1908–09  
glazed earthenware  
5 h x 2½ dia in (13 x 6 cm)

**PROVENANCE:** Rago Auctions  
Private Collection, New York

\$1,500–2,000

154

**FREDERICK HURTEN RHEAD  
FOR AREQUIPA POTTERY  
vase with leaves**

USA, 1911–13  
glazed squeezebag-decorated earthenware  
6 h x 3¼ dia in (15 x 8 cm)

Impressed manufacturer's mark to underside  
'Arequipa California 2084' with pot under tree.

\$1,000–1,500

155

**WILLIAM JERVIS  
bowl with conventionalized peacock feathers**

USA, c. 1910  
glazed squeezebag-decorated earthenware  
3 h x 6¼ dia in (8 x 16 cm)  
Glazed-over signature to underside.

\$1,000–1,500

156

**FREDERICK HURTEN RHEAD  
FOR JERVIS POTTERY  
rare peacock vase**

USA, 1908–09 | glazed earthenware  
10½ h x 4 dia in (27 x 10 cm)  
Incised signature to underside 'Jervis'.

**PROVENANCE:** Rago Auctions, *Arts & Crafts*,  
19 September 1998, Lot 590  
Private Collection, New York

\$2,500–3,500





161

**SUSAN FRACKELTON  
vase with stylized poppies**

USA, c. 1900 | salt-glazed stoneware  
6¼ h x 3½ dia in (16 x 9 cm)  
Incised and glazed signature to underside 'FS'.

**PROVENANCE:** Cincinnati Art Galleries,  
*Keramics 1993*, Lot 119  
Private Collection, New York

**\$2,500–3,500**

162

**SUSAN FRACKELTON  
low bowl with flowers**

USA, 1900 | salt-glazed stoneware  
4 h x 8¾ dia in (10 x 22 cm)  
Incised signature and date to underside 'S Frackelton 1900'.

**\$1,000–1,500**



157

**FREDERICK HURTEN RHEAD  
FOR ROSEVILLE POTTERY  
Della Robbia vase with prunus branches**

USA, 1906–07 | glazed earthenware  
9½ h x 3 dia in (24 x 8 cm)  
Raised seal to underside 'Rozane Ware'.

**\$1,500–2,000**

158

**FREDERICK HURTEN RHEAD  
FOR ROSEVILLE POTTERY  
Della Robbia teapot with stylized flora**

USA, 1906–07 | glazed earthenware  
8 h x 7 w x 3½ d in (20 x 18 x 9 cm)  
Raised seal to underside 'Rozane Ware'.

**PROVENANCE:** Rago Auctions  
Private Collection, New York

**\$1,000–1,500**

159

**FREDERICK HURTEN RHEAD  
FOR ROSEVILLE POTTERY  
Della Robbia dragon vase**

USA, 1906–07 | glazed earthenware  
10½ h x 3¾ dia in (27 x 10 cm)  
Incised signature near base 'AR'.  
Raised seal to underside 'Rozane Ware'.

**\$1,000–1,500**

160

**FREDERICK HURTEN RHEAD  
FOR ROSEVILLE POTTERY  
Della Robbia teapot with rooster and owl**

USA, 1906–07 | glazed earthenware  
6¼ h x 7½ w x 1½ d in (16 x 19 x 4 cm)  
Raised seal to underside 'Rozane Ware'.

**\$1,000–1,500**



163

**ADELAIDE ROBINEAU**  
**vase**

USA, 1915 | cobalt crystalline glazed porcelain  
3½ h × 4¾ dia in (9 × 12 cm)  
Incised signature, date and number  
to underside 'RP 357 15'.

**PROVENANCE:** Rago Auctions  
Private Collection, New York

**\$7,000–9,000**



164

**ADELAIDE ROBINEAU**  
**exceptional vase with reticulated rim**

USA, 1920 | glazed and carved porcelain  
7 h × 3½ dia in (18 × 9 cm)  
Carved signature, date and number  
to underside 'AR 1920 52'.

**PROVENANCE:** David Rago  
Private Collection

**\$8,000–12,000**





165

**ADELAIDE ROBINEAU**  
vase

USA, 1915 | ivory crystalline glazed porcelain  
3½ h x 4 dia in (9 x 10 cm)  
Incised signature, date and number  
to underside 'RP 276 15'.

**LITERATURE:** *Adelaide Alsop Robineau:*  
*Glory in Porcelain*, Weiss (ed.), pg. 34  
for a similar example

\$5,000–7,000

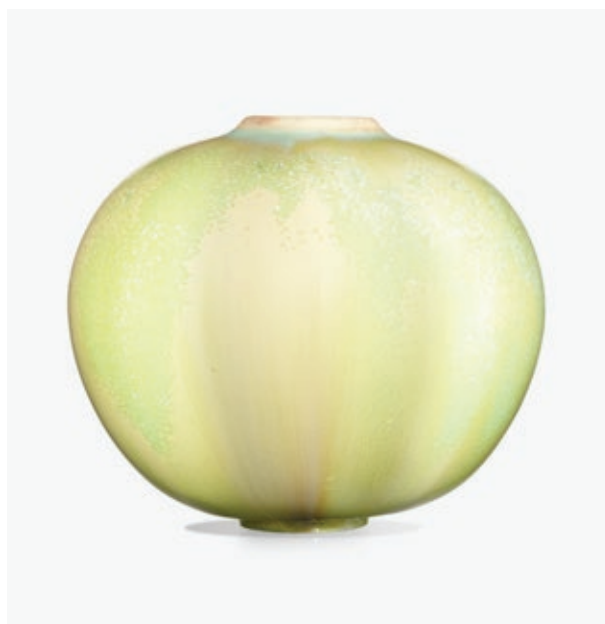
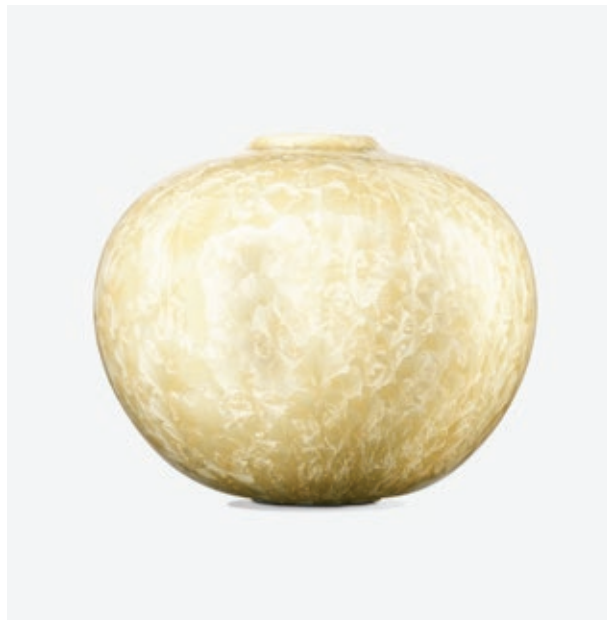
166

**ADELAIDE ROBINEAU**  
vase

USA, 1915  
celadon microcrystalline glazed porcelain  
3¾ h x 4 dia in (10 x 10 cm)  
Incised signature, date and number  
to underside 'RP 348 15'.

**LITERATURE:** *Adelaide Alsop Robineau:*  
*Glory in Porcelain*, Weiss (ed.), pg. 34  
for a similar example

\$4,500–6,500



167

**ADELAIDE ROBINEAU**  
vase

USA, 1915  
rare blue crystalline glazed porcelain  
6 h x 2¼ dia in (15 x 6 cm)  
Incised signature and number  
to underside 'RP 275 15'.

\$7,000–9,000



168

**ADELAIDE ROBINEAU**  
vase

USA, 1926  
brown and blue crystalline glazed porcelain  
5¼ h × 3¼ dia in (13 × 8 cm)  
Incised circular artist seal and date  
to underside 'AR 1926'.

**PROVENANCE:** Rago Auctions  
Private Collection, New York

**\$6,000–9,000**



169

**ADELAIDE ROBINEAU**  
vase

USA, c. 1910  
russet and celadon crystalline glazed porcelain  
6 h × 2 dia in (15 × 5 cm)  
Incised signature and number  
to underside 'RP 2'.

**PROVENANCE:** Rago Auctions  
Private Collection, New York

**\$8,000–12,000**





170

**ADELAIDE ROBINEAU  
pierced candlestick**

USA, c. 1905  
carved and ivory crystalline glazed porcelain  
8¾ h x 4 dia in (22 x 10 cm)  
Carved and incised circular artist seal and  
number to inside edge near base 'AR 192 14';  
Museum deaccession number 'PC 61.2.2A'.

**LITERATURE:** *Adelaide Alsop Robineau:  
Glory in Porcelain*, Weiss (ed.), pg. 184  
for a similar example

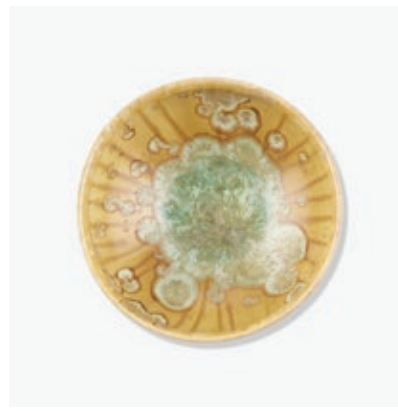
**\$1,000–1,500**

172

**ADELAIDE ROBINEAU  
miniature vase**

USA, 1908 | glazed porcelain  
1½ h x 1¾ dia in (4 x 4 cm)  
Incised circular artist seal and date  
to underside 'AR 08';  
Museum deaccession number  
to underside '1974.581'.

**\$1,000–1,500**



171

**ADELAIDE ROBINEAU  
small bowl**

USA, c. 1910  
russet and celadon crystalline glazed  
porcelain with incised decoration  
1½ h x 4 dia in (4 x 10 cm)  
Incised circular artist cipher and  
number to underside 'AR 430'.

**\$1,000–1,500**

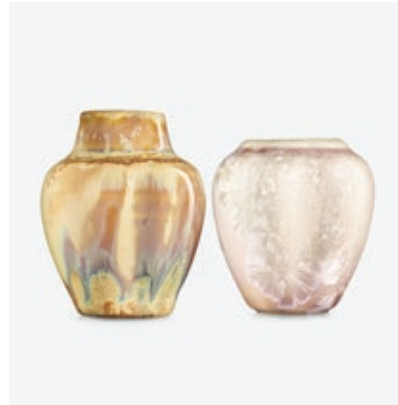
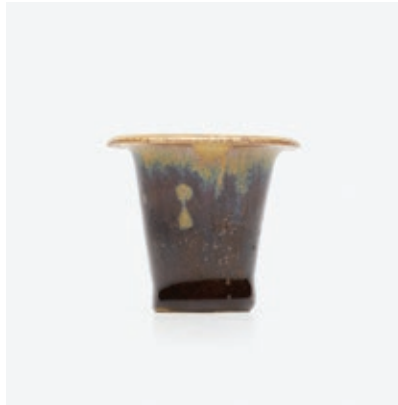
173

**ADELAIDE ROBINEAU  
AND MABEL LEWIS  
miniature vase and test vase**

USA, c. 1910 | glazed porcelain  
2½ h x 2 dia in (6 x 5 cm)  
Test vase created for University City. Incised  
signature and number to underside 'AR C4 11-  
111'. The other incised with an underlined 'M'.

**PROVENANCE:** Rago Auctions (Robineau only)  
Private Collection, New York

**\$2,000–3,000**



174

**ADELAIDE ROBINEAU  
vase**

USA, 1915  
celadon and blue crystalline glazed porcelain  
4 h x 5 dia in (10 x 13 cm)  
Incised signature, date and number  
to underside 'RP 323 15'.

**\$8,000–12,000**





175

**GEORGE E. OHR**  
exceptional large vase

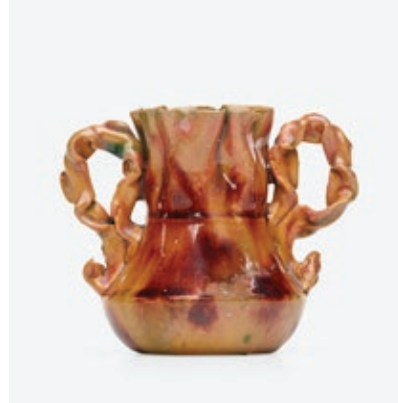
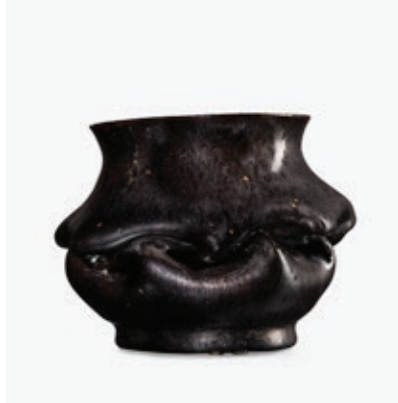
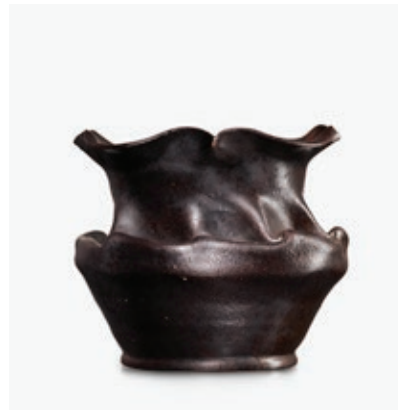
USA, 1897–1900 | glazed earthenware  
9¾ h × 7 w × 4 d in (25 × 18 × 10 cm)

This work features a deep in-body twist, ribbon handles, and a green and gunmetal sponged-on glaze. Impressed signature to underside 'G.E. Ohr, Biloxi, Miss.'

**PROVENANCE:** Collection of James Carpenter  
Private Collection, New York

\$25,000–35,000





176

**GEORGE E. OHR**  
**dimpled vase**

USA, 1895–96 | glazed earthenware  
4¾ h × 2¼ dia in (12 × 6 cm)  
This work features an in-body twist and ochre and gunmetal glaze. Impressed signature to underside 'Geo. E. Ohr Biloxi, Miss.'.

\$2,000–3,000

178

**GEORGE E. OHR**  
**cabinet vase**

USA, 1897–1900 | glazed earthenware  
2¼ h × 3 dia in (6 × 8 cm)  
This work features an in-body twist and a gunmetal and aventurine glaze. Impressed signature to underside 'G.E. Ohr Biloxi, Miss.'.

\$2,000–3,000

177

**GEORGE E. OHR**  
**vase**

USA, 1897–1900 | glazed earthenware  
3 h × 3½ dia in (8 × 9 cm)  
This work features an in-body twist, a pinched rim, and a gunmetal and aventurine glaze. Impressed signature to underside 'G.E. Ohr Biloxi, Miss.'.

**PROVENANCE:** Private Collection, New York

\$1,500–2,000

179

**GEORGE E. OHR**  
**rare miniature vase**

USA, 1895–96 | glazed earthenware  
3 h × 3½ w × 2½ d in (8 × 9 × 6 cm)  
This work features crimped ear handles and a raspberry, ochre, and green glaze. Impressed signature to underside 'Geo. E. Ohr Biloxi, Miss.'.

\$2,500–3,500

180

**GEORGE E. OHR**  
**large vase**

USA, 1895–96 | glazed earthenware  
6¼ h × 4½ w × 3½ d in (16 × 11 × 9 cm)  
This work features an in-body twist, ribbon handles, a pinched rim, and an ochre, brown, and gunmetal speckled glaze. Impressed signature to underside 'G.E. Ohr, Biloxi'.

\$8,000–12,000



181

**GEORGE E. OHR**  
exceptional and very large vessel

USA, 1898–1910 | glazed earthenware  
12½ h × 6 w × 6½ d in (32 × 15 × 17 cm)  
This work features an in-body twist,  
a cone-shaped protruding element, and an  
ochre and gunmetal sponged-on and  
speckled glaze. Incised signature  
to underside and inside rim 'Ohr'.

**LITERATURE:** *George Ohr, Art Potter:  
The Apostle of Individuality*, Ellison, pg. 69  
illustrates this example

**PROVENANCE:** Collection of James Carpenter  
Private Collection, New York

\$20,000–30,000







182

**GEORGE E. OHR**  
large mug

USA, 1896–1910 | glazed earthenware  
6 h × 5½ w × 4 d in (15 × 14 × 10 cm)  
This work features an ear handle and a cobalt, green, and gunmetal glaze. Incised script signature to underside 'G.E. Ohr' with lowercase 'm'.

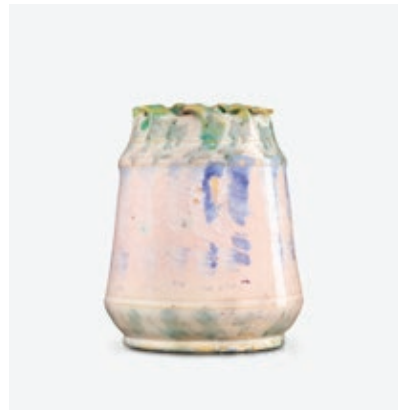
\$2,000–3,000

184

**GEORGE E. OHR**  
teapot with snake spout

USA, 1895–96 | glazed earthenware  
3½ h × 7 w × 4½ d in (9 × 18 × 11 cm)  
This work features a raspberry glaze. Impressed signature to underside 'Geo. E. Ohr Biloxi, Miss.'.

\$2,500–3,500



183

**GEORGE E. OHR**  
vase

USA, 1897–1900 | glazed earthenware  
3¾ h × 3 dia in (10 × 8 cm)  
This work features a ruffled rim and an unusual pastel glaze. Impressed signature to underside 'G.E. Ohr Biloxi, Miss.'.

\$2,000–3,000

185

**GEORGE E. OHR**  
vase

USA, 1895–96 | glazed earthenware  
2 h × 2¾ dia in (5 × 7 cm)  
This work features an in-body twist and an indigo glaze. Glazed-over impressed signature to underside 'G.E. Ohr Biloxi'.

\$1,500–2,000

186

**GEORGE E. OHR**  
exceptional large coupe

USA, 1897–1900 | glazed earthenware  
10 h × 4½ dia in (25 × 11 cm)  
This work features an in-body twist, ruffled rim, and a green and gunmetal sponged-on glaze. Impressed signature to underside 'G.E. Ohr, Biloxi, Miss.'.

**LITERATURE:** *George Ohr: The Greatest Art Potter on Earth*, Hecht, pg. 231 pl. 79 illustrates this example

**PROVENANCE:** Collection of James Carpenter Private Collection, New York

\$15,000–20,000



187

**HENRIETTA BAILEY  
FOR NEWCOMB COLLEGE POTTERY**  
early wall-hanging charger with live oaks

USA, 1908 | glazed earthenware  
1½ h × 10¾ dia in (4 × 27 cm)  
Signed, dated and numbered to verso  
'NC/HB/JW/CG32'

**PROVENANCE:** Private Collection, Tuscon  
\$6,000–8,000



188

**ANNA FRANCES SIMPSON  
FOR NEWCOMB COLLEGE POTTERY**  
early vase with irises

USA, 1909 | glazed earthenware  
10¼ h × 5 dia in (26 × 13 cm)  
Signed, dated and numbered to underside  
'NC/JW/CZ76/Q/AFS'

**PROVENANCE:** Rago Auctions  
Private Collection, New York  
\$7,000–9,000







189

**SARA BLOOM LEVY  
FOR NEWCOMB COLLEGE POTTERY**  
early wall-hanging plate with crocuses

USA, 1907 | glazed earthenware  
8½ dia in (22 cm)  
Signed, dated and numbered to verso  
'NC/JM/Q/BU64/SLB'.

\$2,500–3,500



191

**MARIE ROSS  
FOR NEWCOMB COLLEGE POTTERY**  
early vase with lady'slipper orchids

USA, 1902 | glazed earthenware  
9¼ h x 5½ dia in (23 x 14 cm)  
Signed, dated and numbered to underside  
'NC/JM/U12/Q/MRoss'.

\$3,000–4,000



190

**ALMA MASON  
FOR NEWCOMB COLLEGE POTTERY**  
Transitional vase with roses

USA, 1913 | glazed earthenware  
7 h x 4½ dia in (18 x 11 cm)  
Signed, dated and numbered to underside  
'NC/JM/B in circle/F.S.28/A.M.'.

\$1,000–1,500



192

**MARGUERITE LABARRE  
FOR NEWCOMB COLLEGE POTTERY**  
rare rounded mug

USA, c. 1905 | glazed earthenware  
4¼ h x 4¾ w x 3½ d in (11 x 12 x 9 cm)  
Signed to handle 'NC LM'.  
Numbered to interior '54'.

\$1,000–1,500

193

**SADIE IRVINE  
FOR NEWCOMB COLLEGE POTTERY**  
vase with tall pines and full moon

USA, 1925 | glazed earthenware  
9¼ h x 4 dia in (23 x 10 cm)  
Signed, dated and numbered to underside  
'NC/JM/OP58/325/SI'.

**PROVENANCE:** Rago Auctions,  
*Early 20th C. Design*, 2 March 2013, Lot 250a  
Private Collection, Pennsylvania

\$3,000–4,000







194

**EMMA URQUHART  
FOR NEWCOMB COLLEGE POTTERY  
rare vase with lemons**

USA, 1907 | glazed earthenware  
5 h x 6 dia in (13 x 15 cm)  
Signed, dated and numbered to underside  
'NC/JM/BQ88/Q/EU'.

\$2,500-3,500

195

**MARIE DE HOA LEBLANC  
FOR NEWCOMB COLLEGE POTTERY  
early inkwell with roosters**

USA, 1907 | glazed earthenware  
2 h x 3 1/4 dia in (NaN x 8 cm)  
Signed, dated, and numbered to underside  
'NC/JM/CB52/MHLeB/Q'.

\$1,000-1,500

196

**FRANCES HOWE COCKE  
FOR NEWCOMB COLLEGE POTTERY  
rare early miniature vase with daffodils**

USA, c. 1906 | glazed earthenware  
1 3/4 h x 2 1/4 dia in (4 x 6 cm)  
Impressed signature to underside 'NC/T/FHC'.

\$1,000-1,500

197

**HARRIET JOOR  
FOR NEWCOMB COLLEGE POTTERY  
early vase with stylized buds**

USA, 1904 | glazed earthenware  
5 1/2 h x 4 1/2 dia in (14 x 11 cm)  
Signed, dated, and numbered to underside  
'NC/JM/Q/UU63/JH'. Remnants of original  
paper label.

\$3,000-4,000





198

**MARY LOUISE MCLAUGHLIN**  
**Losanti cabinet vase with fern**

USA, 1899–1914  
carved celadon and oxblood glazed porcelain  
4 h × 1¼ w × 1¼ d in (10 × 3 × 3 cm)  
Glazed to underside 'Losanti'.  
Incised signature and number  
to underside MCL 240'.

**\$3,000–4,000**

199

**MARY LOUISE MCLAUGHLIN**  
**Losanti cabinet vase with morning glories**

USA, 1899–1914 | glazed porcelain  
2 h × 2¼ dia in (5 × 6 cm)  
Incised signature and number  
to underside 'MCL 85 Losanti'.

**PROVENANCE:** Rago Auctions  
Private Collection, New York

**\$1,000–1,500**

200

**MARY LOUISE MCLAUGHLIN**  
**oriental-style Losanti vase with flowers**

USA, 1899–1914 | glazed porcelain  
5 h × 3 dia in (13 × 8 cm)  
Incised and glazed signature and number  
to underside 'MCL 89 Losanti'.

**PROVENANCE:** Rago Auctions  
Private Collection, New York

**\$8,000–12,000**



201

**MARY LOUISE MCLAUGHLIN**  
**Losanti cabinet vase with fern and pierced neck**

USA, 1899–1914 | carved and glazed porcelain  
4 h × 1¼ w × 1¼ d in (10 × 3 × 3 cm)  
Glazed to underside 'Losanti'.  
Incised signature and number to  
underside 'MCL 207'.

\$1,000–1,500

202

**MARY LOUISE MCLAUGHLIN**  
**Losanti vase with daffodils**

USA, 1899–1914 | glazed porcelain  
5 h × 3½ dia in (13 × 9 cm)  
Incised signature and number to  
underside 'MCL 3'.

\$3,000–4,000

203

**MARY LOUISE MCLAUGHLIN**  
**rare Losanti grain-de-riz (rice grain) vase**

USA, 1900–04 | carved and glazed porcelain  
3¾ h × 3¼ dia in (10 × 8 cm)  
Incised and glazed signature and number to  
underside 'MCL 332 Losanti'.

**LITERATURE:** *From Our Native Clay:  
Art Pottery from the Collections of  
The American Ceramic Arts Society,*  
Eidelberg (ed.), pg. 70 for a similar example

\$3,000–4,000







204

**MABEL OR EDWARD GARDNER LEWIS  
FOR UNIVERSITY CITY  
vase**

USA, 1910–14 | carved celadon and  
peachbloom crystalline glazed porcelain  
6¼ h x 5 dia in (16 x 13 cm)  
Raised signature to underside 'L'.

**LITERATURE:** *The Arts and Crafts Movement  
in America 1876–1916*, Clark (ed.),  
pg. 178 for a similar example.

**\$3,000–4,000**

206

**UNIVERSITY CITY  
vase**

USA, 1912  
ivory and peach crystalline glazed porcelain  
9¼ h x 3¾ dia in (23 x 10 cm)  
Incised signature, date and number  
to underside 'UC 1912 3'.

**PROVENANCE:** Rago Auctions  
Private Collection, New York

**\$2,500–3,500**

205

**TAXILE DOAT FOR UNIVERSITY CITY  
vase**

USA, 1913  
pale blue, green, and ivory crystalline  
glazed porcelain  
7 h x 3¾ dia in (18 x 10 cm)  
Glazed signature and date  
to underside 'UC 1913 TD'.

**PROVENANCE:** Cincinnati Art Galleries,  
Cincinnati, OH, *Keramics*, 1993, Lot 215  
Private Collection, New York

**\$2,000–3,000**

207

**UNIVERSITY CITY  
vase**

USA, 1913 | crystalline glazed porcelain  
10 h x 3¾ dia in (25 x 10 cm)  
Glazed signature and date  
to underside 'UC 1913'.

**\$2,500–3,500**





208

**UNIVERSITY CITY  
vases, set of two**

USA, 1913/undated | glazed porcelain  
9¼ h × 3¾ dia in (23 × 10 cm)  
Gourd-shaped vase executed by  
Edward Gardner Lewis. Gourd-shaped vase  
measures: 4 dia × 6.5 h inches.  
Signed and dated to underside of each  
example 'U.C 1913 55' and 'UC EGL 7'.

**\$2,500–3,500**

209

**UNIVERSITY CITY  
test vase and flattened vase**

USA, 1913/undated  
crystalline glazed porcelain  
3¼ h × 3½ w × 2¼ d in (8 × 9 × 6 cm)  
Test vase measures: 2 dia × 3 h inches.  
Glazed signature, date and number to  
underside of larger 'U.C 1913 61'.

**\$1,000–1,500**

210

**UNIVERSITY CITY  
vase**

USA, 1912  
ivory and pale blue crystalline glazed porcelain  
7 h × 3¾ dia in (18 × 10 cm)  
Incised signature and date to underside  
'UC 1912'.

**PROVENANCE:** Cincinnati Art Galleries,  
Cincinnati, OH, *Keramics*, 1993, Lot 214  
Private Collection, New York

**\$1,500–2,000**



211

**MATTHEW DALY  
FOR ROOKWOOD POTTERY**  
exceptional large Standard Glaze  
Native American portrait vase

USA, 1899 | glazed earthenware  
15¾ h × 15 w × 6 d in (40 × 38 × 15 cm)

This work features a portrait of  
Chief Hollow Horn Bear from the Sioux tribe.  
Glazed signature and title to front  
'Chief Hollow Horn Bear, Sioux M.A. Daly'.  
Impressed manufacturer's mark to underside  
'Flame mark/707/X'.

**PROVENANCE:** Collection of Toni Schulman  
Rago Auctions, *Toni Schulman Collection  
of Rookwood Pottery*, 6 March 2004, Lot 4  
Private Collection

\$7,500–10,000





212

**GRACE YOUNG  
FOR ROOKWOOD POTTERY  
large Standard Glaze Native American  
portrait vase**

USA, 1899 | glazed earthenware  
12½ h x 8 dia in (32 x 20 cm)  
This work features a portrait of Shavehead  
from the Arapahoe tribe. Incised title to  
underside 'Shavehead - Arapahoe'.  
Impressed manufacturer's mark to  
underside 'Flame mark/886B'.

\$2,000–3,000



213

**MATTHEW DALY  
FOR ROOKWOOD POTTERY  
Standard Glaze Native American  
portrait vases, set of two**

USA, 1899 | glazed earthenware  
13¾ h x 7 dia in (35 x 18 cm)  
These works feature portraits of Red Lodge from  
the Upper Yankton tribe and Umatilla Jim from  
the Warm Springs tribe. Each signed and dated  
'Flame mark/614B/M.A. Daly'. One titled  
'Red Lodge Upper Yankton' the other  
'Umatilla Jim Warm Springs'.

\$7,000–9,000





214

**AREQUIPA POTTERY**  
large vase with grapevines

USA, 1913–18 | glazed earthenware  
10½ h × 7½ dia in (27 × 19 cm)  
Incised decorator's signature to underside 'JJ'.  
Impressed manufacturer's mark to underside  
'Arequipa California 404 16' with pot  
under tree mark.

\$1,000–1,500

215

**JOHN BENNETT**  
large vase with hibiscus flowers

USA, 1881 | glazed earthenware  
11 h × 7 dia in (28 × 18 cm)  
Glazed signature and date to underside  
'Bennett 412 E 14 N.Y. 1881'.

\$1,000–1,500

216

**L. & J.G. STICKLEY**  
rare cabinet, model 729

USA, 1907–12 | oak, hammered copper, glass  
70 h × 49½ w × 17 d in (178 × 126 × 43 cm)  
Decal manufacturer's label to interior  
'L. & J.G. Stickley Handcraft'.

\$6,000–9,000







217

**ROBERT WALLACE MARTIN  
FOR MARTIN BROTHERS**

triple-necked vase with grotesque sunflowers

England, 1891 | salt-glazed stoneware  
8½ h × 6½ dia in (22 × 17 cm)

Incised signature and date to underside 'R.W.  
Martin & Brothers London + Southall 9 1891'.

\$4,000–6,000

218

**LAJOS MACK FOR ZSOLNAY**  
rare vase with mermaid and merman

Hungary, c. 1900 | eosin glazed earthenware  
8 h × 10 w × 9 d in (20 × 25 × 23 cm)  
Molded manufacturer's mark to underside  
'Zsolnay Pécs 6108 36' with five churches mark.  
Sold with a photograph of the original receipt.

**LITERATURE:** *Zsolnay Ceramics:  
Collecting a Culture*, Santi and Gacher,  
pg. 123 for a similar example

**PROVENANCE:** Acquired from Galerie Lionel  
Latham, Geneva in 1994 by the present owner

\$4,000–6,000





219

**GEORGE E. OHR**  
large vase

USA, 1897–1900 | glazed earthenware  
8½ h × 4½ w × 3½ d in (22 × 11 × 9 cm)  
This work features ear handles and an incised  
bald eagle, ship, and wheat.  
Impressed signature to underside  
'G.E. Ohr Biloxi, Miss.'

\$6,000–9,000



220

**GEORGE E. OHR**  
large two-sided vase

USA, 1897–1900 | glazed earthenware  
6 h × 4½ dia in (15 × 11 cm)  
This work features a ruffled rim and polka dots  
on one side and an ochre glaze on the other.  
Impressed signature to underside  
'G.E. Ohr Biloxi, Miss.'

\$7,000–9,000





221

**GEORGE E. OHR**  
**large vase**

USA, 1896–1910 | glazed earthenware  
7 h x 4 dia in (18 x 10 cm)  
This work features an in-body twist  
and a green and gunmetal glaze.  
Incised signature to underside 'G.E. Ohr'.

**PROVENANCE:** Rago Auctions  
Private Collection, New York

**\$4,000–6,000**

222

**GEORGE E. OHR**  
**bulbous vase**

USA, 1897–1900 | glazed earthenware  
6¼ h x 4¼ dia in (16 x 11 cm)  
This work features an exceptional  
raspberry, gunmetal, and green glaze.  
Impressed signature to underside  
'G.E. Ohr Biloxi, Miss.'.

**\$3,000–4,000**

223

**GEORGE E. OHR**  
**large vase**

USA, 1897–1900 | glazed earthenware  
6½ h x 5 dia in (17 x 13 cm)  
This work features a folded rim and speckled  
glaze. Impressed signature to underside  
'G.E. Ohr Biloxi, Miss.'.

**\$5,000–7,000**





224

**GEORGE E. OHR**  
**large dimpled bisque vase**

USA, 1898–1910 | earthenware  
6 h × 4½ dia in (15 × 11 cm)  
This work features an in-body twist.  
Incised signature to underside 'G.E. Ohr'.

\$2,000–3,000

225

**GEORGE E. OHR**  
**bisque vase**

USA, 1898–1910 | earthenware  
5 h × 5½ dia in (13 × 14 cm)  
This work features a ruffled rim and in-body folds.  
Incised signature to underside 'G.E. Ohr'.

\$1,500–2,000

226

**GEORGE E. OHR**  
**bisque vase**

USA, 1906 | earthenware  
4½ h × 5¼ dia in (11 × 13 cm)  
This work features a ruffled rim. Incised  
signature and dedication to underside  
'G.E. Ohr A.H. McN Jan. 12 1906 at Biloxi'.

\$1,200–1,800

227

**GEORGE E. OHR**  
**lobed and folded bisque pitcher**

USA, 1898–1910 | scroddled earthenware  
3¾ h × 5¾ w × 3½ d in (10 × 15 × 9 cm)  
Incised signature to underside 'G.E. Ohr'.

\$5,000–7,000







228

**GEORGE E. OHR**  
**pinched and folded bisque pitcher**

USA, 1898–1910 | earthenware  
3½ h × 4 w × 6 d in (9 × 10 × 15 cm)  
Incised signature to underside 'G.E. Ohr'.

\$1,000–1,500



229

**GEORGE E. OHR**  
**large pinched bisque pitcher**

USA, 1898–1910 | earthenware  
4½ h × 6¾ w × 7½ d in (11 × 17 × 19 cm)  
Incised signature to underside 'G.E. Ohr'.

\$1,200–1,800

230

**GEORGE E. OHR**  
**brothel tokens, set of five**

USA, c. 1905 | earthenware  
1½ dia in (4 cm)  
\$1,000–1,500



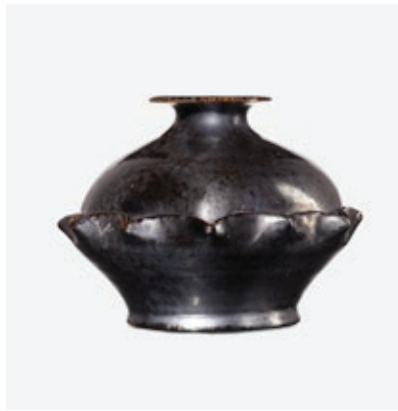
231

**GEORGE E. OHR**  
**bisque pitcher**

USA, 1898–1910 | scroddled earthenware  
4½ h × 5¼ w × 4 d in (11 × 13 × 10 cm)  
Incised signature to underside 'G.E. Ohr'.

\$4,000–6,000





232

**GEORGE E. OHR**  
vase

USA, 1898–1910 | glazed earthenware  
3¼ h × 4¼ dia in (8 × 11 cm)  
This work features a mid-body ruffle and  
gunmetal glaze. Incised signature  
to underside 'G.E. Ohr'.

\$1,200–1,800

234

**GEORGE E. OHR**  
ruffled saucers, set of two

USA, 1895–96 | glazed earthenware  
4¼ dia in (11 cm)  
Ohr's fingerprints can be seen on the green  
saucer. Impressed signature  
to underside of one 'G.E. Ohr, Biloxi'.

\$1,000–1,500



233

**GEORGE E. OHR**  
cabin novelty paperweight

USA, c. 1895 | glazed earthenware  
1¾ h × 3 w × 2 d in (4 × 8 × 5 cm)  
Stamped signature to underside  
'GEO E. OHR, BILOXI MISS.'.

**PROVENANCE:** Rago Auctions, *Early 20th C.*,  
27 October 2012, Lot 738

\$1,000–1,500

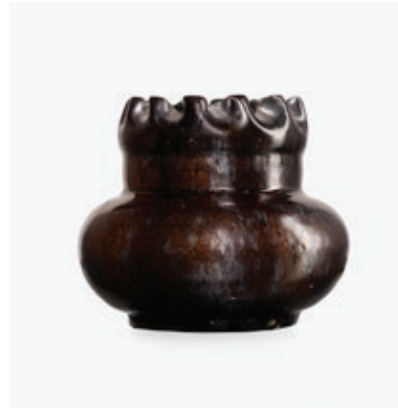
235

**GEORGE E. OHR**  
vase

USA, 1897–1900 | glazed earthenware  
3½ h × 4¼ dia in (9 × 11 cm)  
This work features a ruffled rim and fine  
gunmetal glaze. Glazed-over signature  
to underside 'G.E. Ohr Biloxi, Miss.'.

**PROVENANCE:** Rago Auctions  
Private Collection, New York

\$1,000–1,500



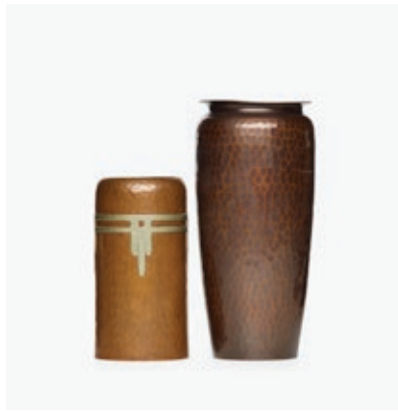
236

**ROYCROFT**  
rare cabinet, model 7

USA, c. 1906  
oak, copper, leaded glass, mirrored glass  
64¼ h × 42½ w × 21 d in (163 × 108 × 53 cm)  
Features two doors concealing one  
compartment fitted for three adjustable  
shelves. Carved orb and cross mark to  
center front at base.

\$5,000–7,000





237

**DARD HUNTER FOR ROYCROFT  
vase**

USA, 1910–28  
hammered copper with applied patina,  
nickel silver  
6 h × 3 dia in (15 × 8 cm)  
Sold with additional Roycroft vase, c. 1930.  
Larger vase measures: 4 dia × 8.5 h inches.  
Impressed orb and cross mark.

\$800–1,200

239

**ROYCROFT  
vases, set of four**

USA, 1909–28  
hammered copper with applied patina,  
nickel silver  
12 h × 5 3/4 dia in (30 × 15 cm)  
Lot is comprised of two *American Beauty* vases,  
one with dogwood flowers, and one designed  
by Dard Hunter. Shortest vase measures:  
3 dia × 6.5 h inches. Impressed orb and cross  
mark to underside of each.

\$3,500–4,500

238

**KARL KIPP FOR TOOKAY SHOP  
three-handled vase**

USA, 1912–15  
hammered copper with applied patina  
7 1/4 h × 3 1/4 w × 3 1/4 d in (18 × 8 × 8 cm)  
Impressed signature to underside 'KK'.

\$1,000–1,500

240

**ROYCROFT  
rare cabinet, model 55**

USA, c. 1905 | oak, leaded glass, copper  
40 h × 32 w × 19 d in (102 × 81 × 48 cm)  
Features one door concealing two fixed shelves.  
Carved orb and cross mark to escutcheon plate.

\$4,000–6,000





241

**ROYCROFT**  
table lamp

USA, early 20th century  
hammered copper, mica, brass  
27 h x 21 dia in (69 x 53 cm)  
Impressed orb and cross mark to body.

\$2,000-3,000

242

**DARD HUNTER FOR ROYCROFT**  
table lamp

USA, c. 1925  
leaded slag glass, hammered copper  
with applied patina  
22 h x 18 dia in (56 x 46 cm)  
Impressed orb and cross mark to lamp base.

**PROVENANCE:** Rago Auctions  
Private Collection, New York

\$5,000-7,000





243

**ROYCROFT**  
rare cabinet, model 63

USA, c. 1906 | oak, copper  
42¼ h × 31 w × 19 d in (107 × 79 × 48 cm)  
Cabinet features one door concealing one fixed shelf over four horizontal and two vertical compartments. The exterior features a carved tree of life motif on the left and right sides. Carved orb and cross mark to lower edge of door.

\$3,000–4,000



244

**ROYCROFT**  
hall chair, model 31

USA, c. 1906 | oak  
46½ h × 18¾ w × 18½ d in (118 × 48 × 47 cm)  
Carved manufacturer's mark to front of crest rail 'Roycroft'.

\$2,000–3,000

245

**ROYCROFT**  
rare drop-front desk, model 92

USA, c. 1906 | oak, pine, copper  
52½ h × 36 w × 15 d in (133 × 91 × 38 cm)  
Desk features two fixed shelves below a drop-front door concealing nine filing compartments. Carved orb and cross mark to center front of door.

\$2,000–3,000

246

**GRUEBY FAIENCE COMPANY**  
fine large two-color vase with leaves and buds

USA, 1898–1910 | glazed earthenware  
10¼ h × 8½ dia in (26 × 22 cm)  
Impressed manufacturer's mark to underside 'Grueby Pottery Boston U.S.A.' with lotus symbol. Incised signature to underside 'H'.

\$7,000–9,000





247

**GRUEBY FAIENCE COMPANY**  
rare vase with classical figures

USA, 1901–10 | glazed earthenware  
10¼ h × 8½ dia in (26 × 22 cm)  
Impressed manufacturer's mark to underside  
'Grueby Pottery Boston U.S.A.' with lotus symbol.  
Incised unknown artist cipher.

\$4,000–6,000

248

**GUSTAV STICKLEY**  
early and rare tile-top tabouret, model 45

USA, c. 1901 | Grueby Faience Company  
oak, glazed earthenware  
21 h × 16 w × 16 d in (53 × 41 × 41 cm)  
Red manufacturer's decal to underside.

\$2,000–3,000

249

**GRUEBY FAIENCE COMPANY**  
two rare tiles depicting cows in a landscape

USA, 1898–1910  
glazed earthenware decorated in cuerca  
12 h × 12 w × 2 d in (30 × 30 × 5 cm)

**PROVENANCE:** Private Collection

\$5,000–7,000







250

**TECO POTTERY**  
rare vase

USA, 1904–20 | glazed earthenware  
14 h × 6¼ dia in (36 × 16 cm)  
Impressed manufacturer's mark to  
underside 'Teco'.

\$6,000–9,000

251

**WILLIAM J. DODD FOR TECO POTTERY**  
rare jardinière with pond lilies, model 86

USA, 1902–20 | glazed earthenware  
10 h × 9¾ dia in (25 × 25 cm)  
Impressed manufacturer's mark  
to underside 'Teco'.

**PROVENANCE:** Private Collection, New York

\$8,000–12,000





252

**FULPER POTTERY**  
rare cut-out buttressed Vasekraft vase

USA, c. 1915  
Cat's Eye flambé glazed earthenware  
13 h x 7 dia in (33 x 18 cm)  
Stamped vertical rectangular manufacturer's  
mark to underside 'Fulper'.

\$3,000-4,000

253

**FULPER POTTERY**  
rare early Vasekraft table lamp

USA, c. 1909  
Cat's Eye flambé glazed earthenware,  
leaded glass  
18 h x 17 3/4 dia in (46 x 45 cm)  
Stamped rectangular manufacturer's mark  
'Fulper', '23', 'Patents Pending in United States  
and Canada, England, France, and Germany',  
and circular 'Vasekraft' mark with potter at  
wheel to underside of base. Shade stamped  
to interior '23 23 41'.

\$5,000-7,000



254

**FULPER POTTERY**  
rare Vasekraft boudoir lamp

USA, c. 1915  
Mirrored Black and Blue of the Sky flambé  
glazed earthenware, leaded slag glass  
16 h x 9 dia in (41 x 23 cm)  
Stamped rectangular manufacturer's  
mark and number to underside 'Fulper 300'.

\$2,500–3,500

255

**FULPER POTTERY**  
rare floor vase

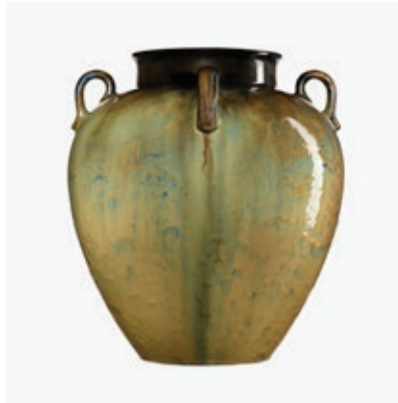
USA, c. 1915  
Brown Flambé glazed earthenware  
36 h x 12½ dia in (91 x 32 cm)  
Stamped rectangular manufacturer's  
mark to underside 'Fulper'.

**PROVENANCE:** Rago Auctions  
Private Collection, New York

\$3,000–4,000







256

**FULPER POTTERY**  
vase

USA, c. 1920  
Leopard Skin Crystalline glazed earthenware  
12 h x 11 w x 9 d in (30 x 28 x 23 cm)  
Faint vertical racetrack stamp to  
underside 'Fulper'.

\$750-1,000

258

**FULPER POTTERY**  
four-handed vase

USA, c. 1915 | glazed earthenware  
12¾ h x 12 dia in (32 x 30 cm)  
Incised vertical racetrack mark to  
underside 'Fulper'.

\$1,500-2,000

257

**FULPER POTTERY**  
early vase

USA, c. 1915 | glazed earthenware  
11 h x 7 dia in (28 x 18 cm)  
This work features a rare flambé glaze.  
Stamped vertical rectangular  
manufacturer's mark to underside 'Fulper'.

\$1,000-1,500

259

**FULPER POTTERY**  
jug

USA, c. 1920  
Copperdust Crystalline glazed earthenware  
11½ h x 8 dia in (29 x 20 cm)  
Incised vertical racetrack mark to  
underside 'Fulper'.

**PROVENANCE:** Rago Auctions,  
*Early 20th C. Design*, 19 May 2018, Lot 1047  
Private Collection

\$1,000-1,500

260

**FULPER POTTERY**  
rare floor vase

USA, c. 1915 | Mirrored Black and Blue of the  
Sky flambé glazed earthenware  
34¼ h x 10 dia in (87 x 25 cm)  
Stamped rectangular manufacturer's  
mark to underside 'Fulper'.

\$5,000-7,000





261

**FULPER POTTERY**  
bud vases, set of four

USA, c. 1920 | glazed earthenware  
7½ h × 3¾ dia in (19 × 10 cm)  
Group is comprised of examples of flambé and crystalline glazes, one vase with a salamander and another with elephant handles. Manufacturer's stamp to each 'Fulper'.

\$1,000–1,500

263

**FULPER POTTERY**  
early vases, set of three

USA, c. 1915 | glazed earthenware  
8 h × 5½ dia in (20 × 14 cm)  
Marked to underside of each example, largest with Prang stamp. The other two vase heights are 4" and 2 1/4".

\$800–1,200

262

**FULPER POTTERY**  
early vase

USA, c. 1915 | glazed earthenware  
8 h × 4¾ dia in (20 × 12 cm)  
Stamped vertical rectangular manufacturer's mark to underside 'Fulper'.

\$1,000–1,500

264

**HUGH C. ROBERTSON FOR DEDHAM POTTERY**  
rare "painted" oxblood cabinet vase

USA, 1896–1908 | glazed stoneware  
4¼ h × 2¾ dia in (11 × 7 cm)  
Glazed manufacturer's mark of a triangle with dot in center to underside. Incised signature to underside 'Dedham Potter HCR'.

\$2,000–3,000



265

**PAULINE POTTERY**  
rare wall-hanging landscape plaque

USA, c. 1905 | glazed earthenware  
8 h × 4¼ w in (20 × 11 cm)  
Impressed manufacturer's mark to verso 'Pauline Pottery' with crown. Glazed artist initials to upper left verso 'LTW'.

\$2,500–3,500

266

**PAULINE POTTERY**  
rare vase with pine trees

USA, c. 1905 | glazed earthenware  
8 h × 3½ dia in (20 × 9 cm)  
Impressed manufacturer's mark to underside 'Pauline Pottery' with crown.

\$2,000–3,000





267

**MARBLEHEAD POTTERY**  
fine and rare vase with geometric design

USA, 1908–20 | glazed earthenware  
8½ h × 4 dia in (22 × 10 cm)  
Impressed manufacturer's mark to  
underside 'MP' with ship symbol.

\$3,500–4,500

269

**ARTHUR BAGGS AND SARAH TUTT  
FOR MARBLEHEAD POTTERY**  
vase with stylized trees

USA, 1908–20 | glazed earthenware  
4¼ h × 3¾ dia in (11 × 10 cm)  
Glazed signature to underside 'B.T'.  
Glazed-over manufacturer's mark.

\$2,000–3,000

268

**MARBLEHEAD POTTERY**  
vase with stylized butterflies and flowers

USA, 1908–20 | glazed earthenware  
4½ h × 4 dia in (11 × 10 cm)  
Impressed manufacturer's mark to  
underside 'MP' with ship symbol.

\$2,000–3,000

270

**ARTHUR HENNESSEY AND SARAH TUTT  
FOR MARBLEHEAD POTTERY**  
vase with crouching panthers in low relief

USA, 1908–16 | glazed earthenware  
6¾ h × 5¼ dia in (17 × 13 cm)  
Impressed manufacturer's mark to underside  
'MP' with ship symbol. Incised signature and  
number to underside 'HT 31'.

**PROVENANCE:** Rago Auctions,  
*Early 20th C. Design*, September 2007, Lot 167  
Private Collection, Pennsylvania

\$7,000–9,000







271

**MARBLEHEAD POTTERY**  
rare geometric vase

USA, 1908–20 | glazed earthenware  
5½ h × 4¾ dia in (14 × 12 cm)  
Impressed manufacturer's mark to  
underside 'MP' with ship symbol.

\$3,000–4,000

272

**MARBLEHEAD POTTERY**  
vase incised with stylized trees

USA, 1908–20 | glazed earthenware  
3¼ h × 4½ dia in (8 × 11 cm)  
Impressed manufacturer's mark to  
underside 'MP' with ship symbol.

\$1,000–1,500

273

**ARTHUR HENNESSEY AND SARAH TUTT  
FOR MARBLEHEAD POTTERY**  
rare vase with conventionalized trees

USA, 1908–16 | glazed earthenware  
6 h × 3 dia in (15 × 8 cm)  
Incised signature to underside 'H.T.'.  
Impressed manufacturer's mark to  
underside 'MP' with ship symbol.

\$2,500–3,500

274

**ARTHUR HENNESSEY AND SARAH TUTT  
FOR MARBLEHEAD POTTERY**  
large vase with conventionalized trees

USA, 1908–16 | glazed earthenware  
12½ h × 4¼ dia in (32 × 11 cm)  
Incised signature to underside 'HT'.  
Impressed manufacturer's mark to  
underside 'MP' with ship symbol.

\$6,000–9,000





275

**FREDERICK HURTEN RHEAD  
FOR ROSEVILLE POTTERY  
large three-handled Della Robbia  
vase with storks**

USA, 1906–07 | glazed earthenware  
13¼ h × 8 dia in (34 × 20 cm)  
Illegible artist signature to body.

\$3,000–4,000

276

**FREDERICK HURTEN RHEAD  
FOR ROSEVILLE POTTERY  
Della Robbia vase with white flowers**

USA, 1906–07 | glazed earthenware  
8¼ h × 5½ dia in (21 × 14 cm)  
Partial paper manufacturer's label to underside.

\$1,000–1,500

277

**ROSEVILLE POTTERY  
Jap Birdimal vase with owls**

USA, c. 1903 | glazed earthenware  
7¾ h × 6½ dia in (20 × 17 cm)  
Numbered to underside '509'.  
Incised signature to body 'LP'.

\$2,000–3,000

278

**FREDERICK HURTEN RHEAD  
FOR ROSEVILLE POTTERY  
exceptional Della Robbia low bowl  
with sea creatures**

USA, 1906–07 | glazed earthenware  
2¾ h × 7½ dia in (7 × 19 cm)  
Incised signature to side of one foot 'FB'.

\$3,500–4,500





279

**ARTUS VAN BRIGGLE  
FOR VAN BRIGGLE POTTERY  
early vase with poppies**

USA, 1902  
Mountain Crag Brown glazed earthenware  
7¾ h x 4 dia in (20 x 10 cm)  
Incised signature, date and number to  
underside 'AA Van Briggle 1902 III'.

\$1,000–1,500

281

**ARTUS VAN BRIGGLE  
FOR VAN BRIGGLE POTTERY  
early bud vase with roses**

USA, 1902 | glazed earthenware  
4¼ h x 3½ dia in (11 x 9 cm)  
Incised signature, date and number to  
underside 'AA Van Briggle 1902 III'.  
Stamped number to underside '105'.

\$1,000–1,500

280

**ARTUS VAN BRIGGLE  
FOR VAN BRIGGLE POTTERY  
early vase with tulips**

USA, c. 1905 | glazed earthenware  
5¾ h x 3 dia in (15 x 8 cm)  
Incised signature to underside 'AA Van Briggle'.

\$1,000–1,500

282

**ARTUS VAN BRIGGLE  
FOR VAN BRIGGLE POTTERY  
early bud vase with leaves**

USA, 1902  
Mountain Crag Brown glazed earthenware  
4¼ h x 3½ dia in (11 x 9 cm)  
Incised signature, date and number to  
underside 'AA Van Briggle 1902 III'.  
Stamped number to underside '104'.

\$1,000–1,500

283

**ARTUS VAN BRIGGLE  
FOR VAN BRIGGLE POTTERY  
early vase with Virginia creepers**

USA, 1903  
Mountain Crag Brown glazed earthenware  
8 h x 6½ dia in (20 x 17 cm)  
Incised signature, date and number to  
underside 'AA Van Briggle 1905 III'.  
Stamped number to underside '164'.

**PROVENANCE:** Rago Auctions  
Private Collection, New York

\$2,500–3,500

284

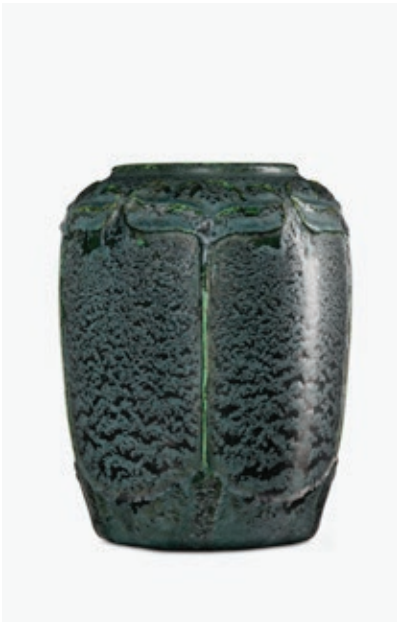
**ARTUS VAN BRIGGLE  
FOR VAN BRIGGLE POTTERY  
early vase with Virginia creepers**

USA, 1902 | glazed earthenware  
7 h x 9½ w x 8½ d in (18 x 24 x 22 cm)  
Incised signature, date and number  
to underside 'AA Van Briggle 1903 III'.  
Stamped to underside '82'.

\$2,500–3,500







285

**MERRIMAC POTTERY**  
**vase with stylized plants**

USA, 1900–08 | glazed earthenware  
6 h × 4½ dia in (15 × 11 cm)

\$2,000–3,000



287

**L. E. DITMAS**  
**FOR MECHANICS INSTITUTE**  
**tall vase with wisteria, in the style**  
**of Frederick Walrath**

USA, 1910 | glazed earthenware  
15 h × 5¼ dia in (38 × 13 cm)

This work was most likely created by a student of Walrath's at the Rochester Institute of Technology. Incised signature and date to underside 'L. E. Ditmas May 17, 1910'.

\$1,000–1,500



286

**MERRIMAC POTTERY**  
**vase with stylized flowers**

USA, 1900–08 | glazed earthenware  
7½ h × 4 dia in (19 × 10 cm)

Impressed manufacturer's mark to underside 'Merrimac' with sturgeon.

**PROVENANCE:** Rago Auctions  
Private Collection, New York

\$2,500–3,500

288

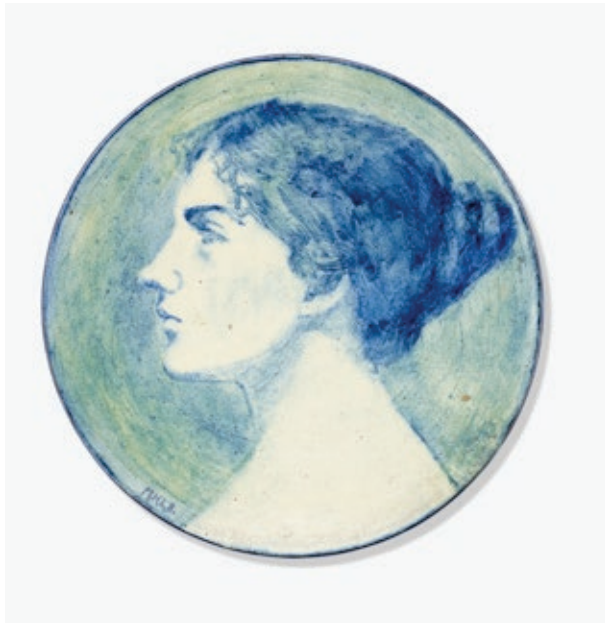
**FREDERICK WALRATH**  
**vase with stylized flowers**

USA, 1908–18 | glazed earthenware  
8½ h × 4 dia in (22 × 10 cm)

Incised signature to underside 'Walrath Pottery'.

\$4,000–6,000



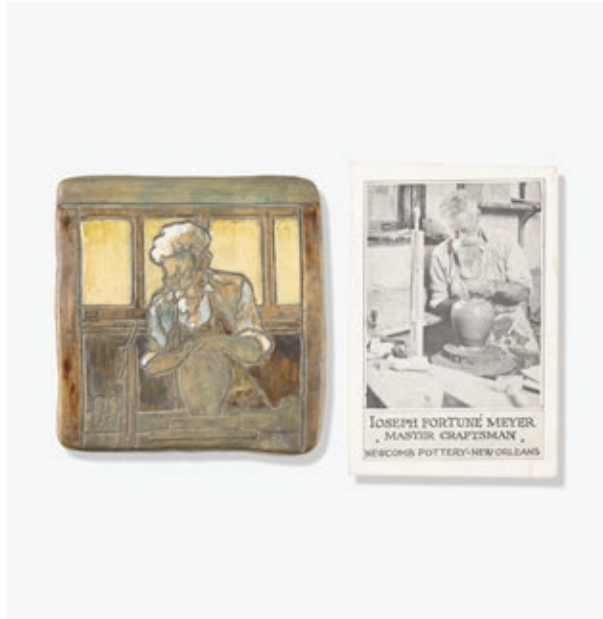


289

**MARIE DE HOA LEBLANC  
FOR NEWCOMB COLLEGE POTTERY**  
rare early wall-hanging portrait plate

USA, 1898 | glazed earthenware  
9 dia in (23 cm)  
Impressed manufacturer's mark to verso  
'Newcomb College'. Glazed signature to verso  
'M.H.L.B. 98 N.O.' and to recto 'M.H.L.B.'.

\$1,000–1,500



290

**LEONA NICHOLSON  
FOR NEWCOMB COLLEGE POTTERY**  
rare tile and postcard depicting  
Joseph Fortune Meyer

USA, c. 1916 | glazed earthenware  
5 h x 5 w x 3/4 d in (13 x 13 x 2 cm)  
Meyer was a professional potter who was in  
charge of throwing all pieces at Newcomb for  
thirty years from 1896 through 1927. He had  
helped to build the kilns and was a greatly  
admired figure during his tenure.  
Postcard measures: 6 h x 4 w inches.  
Incised signature to verso of tile 'LN NC'.

\$2,000–3,000

291

**SABINA E. WELLS  
FOR NEWCOMB COLLEGE POTTERY**  
large vase with female lions under palm trees

USA, 1902 | glazed earthenware  
11 1/2 h x 10 1/2 dia in (29 x 27 cm)  
Signed, dated and numbered to underside  
'NC/JWQ/U89/SEW'.

**LITERATURE:** *Newcomb Pottery: An Enterprise  
for Southern Women, 1895–1940*, Poesch,  
pg. 120, cat. no. 75 illustrates this example

**EXHIBITED:** *Newcomb Pottery: An Enterprise  
for Southern Women, 1895–1940* prepared  
by Newcomb College, Tulane University in  
cooperation with the Smithsonian Institution  
Traveling Exhibits Service, 1984–1987 (for full  
list of locations and dates, see Poesch pg. ii)

\$5,000–7,000



292

**DESIREE ROMAN  
FOR NEWCOMB COLLEGE POTTERY**  
early vase with stylized buds

USA, 1904 | glazed earthenware  
5 h x 3 dia in (13 x 8 cm)  
Signed, dated and numbered  
to underside 'NC/DR/JM/Q/QQ91'.

\$1,500–2,000

294

**MAZIE TERESA RYAN  
FOR NEWCOMB COLLEGE POTTERY**  
rare early inkwell with skulls

USA, c. 1901 | glazed earthenware  
1½ h x 3¾ dia in (4 x 10 cm)  
Signed and dated to underside  
'NC/U/M.T. Ryan/P in triangle'.

\$1,000–1,500

296

**MARY SHEERER  
FOR NEWCOMB COLLEGE POTTERY**  
early vase with thistle

USA, c. 1900 | glazed earthenware  
4 h x 6 dia in (10 x 15 cm)  
Signed and dated to underside  
'NC/JM/U/MS'.

\$2,500–3,500

293

**DESIREE ROMAN  
FOR NEWCOMB COLLEGE POTTERY**  
early vase with stylized arrowroot

USA, 1901 | glazed earthenware  
8¾ h x 3½ dia in (22 x 9 cm)  
Signed, dated and numbered  
to underside 'NC/JM/U/C87/D.R.'.

\$2,500–3,500

295

**SADIE IRVINE  
FOR NEWCOMB COLLEGE POTTERY**  
vase with live oaks and Spanish moss

USA, 1932 | glazed earthenware  
6 h x 4 dia in (15 x 10 cm)  
Signed, dated and numbered to underside  
'NC/KS/Sl/TZ50'. The initials KS are for  
instructor Kenneth Smith who began  
working there in 1929.

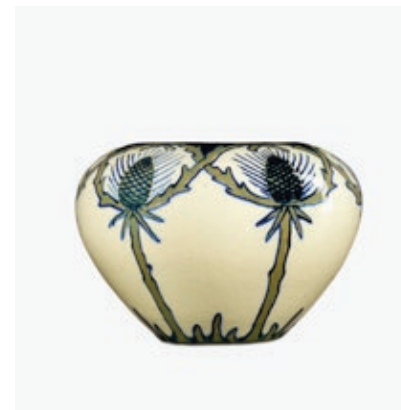
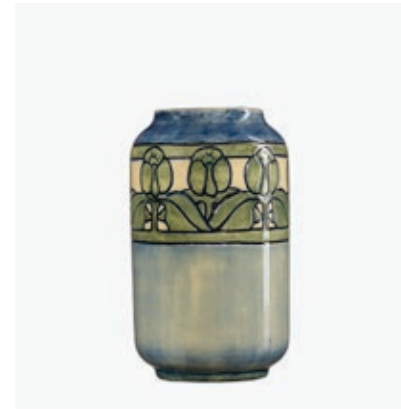
\$2,500–3,500

297

**SARA BLOOM LEVY  
FOR NEWCOMB COLLEGE POTTERY**  
early mug

USA, 1902 | glazed earthenware  
4 h x 5 w x 3½ d in (10 x 13 x 9 cm)  
Glazed and impressed signature and  
date to underside 'NC S.B.L. P57 Q JM'.

\$1,000–1,500







298

**SADIE IRVINE  
FOR NEWCOMB COLLEGE POTTERY  
vase with swirling organic design**

USA, 1931 | glazed earthenware  
9 h x 6½ dia in (23 x 17 cm)  
Signed, dated and numbered  
to underside 'NC/JH/SI/TB35/016'.

\$2,000–3,000

299

**MARIE TEREZA RYAN  
FOR NEWCOMB COLLEGE POTTERY  
early tea caddy**

USA, 1904 | glazed earthenware  
5½ h x 3 dia in (14 x 8 cm)  
Signed, dated and numbered  
to underside 'NC/JM/XX17/MTRyan 1904'.  
Original paper label.

\$3,000–4,000

300

**ANNA FRANCES SIMPSON  
FOR NEWCOMB COLLEGE POTTERY  
large vase with live oaks and Spanish moss**

USA, 1930 | glazed earthenware  
6 h x 8 dia in (15 x 20 cm)  
Signed, dated and numbered  
to underside 'NC/SG27/49/JH/AFS'.

\$4,500–6,500





301

**ANNA FRANCES SIMPSON  
FOR NEWCOMB COLLEGE POTTERY**  
Transitional vase with paperwhites

USA, 1914 | glazed earthenware  
8 h x 4 dia in (20 x 10 cm)  
Signed, dated and numbered  
to underside 'NC/AFS/B/JM/250/GJ66'.

**PROVENANCE:** Rago Auctions,  
*Early 20th C. Design*, March 2007, Lot 126  
Private Collection, Pennsylvania

\$1,800–2,200

303

**HENRIETTA BAILEY  
FOR NEWCOMB COLLEGE POTTERY**  
cabinet vase with flowers

USA, 1921  
glazed earthenware, glazed porcelain  
4½ h x 2 dia in (11 x 5 cm)  
Sold with a c. 1913 University City crystalline  
cabinet vase. University City vase measures:  
3 h x 1.5 w x 1.5 d inches. Newcomb vase  
signed, dated and numbered to underside  
'NC/LR12/HBH/JM'. University City vase  
signed to underside 'UC/W'.

\$800–1,200

302

**LYDIA B. ANGELL  
FOR ANGELL POTTERY**  
Live Oaks vase

USA, c. 1945 | glazed earthenware  
3½ h x 6 dia in (9 x 15 cm)  
Angell Pottery was a contemporary of  
Paul E. Cox. Incised and glazed signature and  
title to underside 'The Angell's New Orleans  
Lydia B. Angell Live Oaks'.

\$1,000–1,500

304

**SADIE IRVINE  
FOR NEWCOMB COLLEGE POTTERY**  
Art Deco vase with stylized leaves

USA, 1933 | glazed earthenware  
3½ h x 4¼ dia in (9 x 11 cm)  
Signed, dated and numbered  
to underside 'NC/UE34/KS/SI'.

\$1,500–2,000

305

**ROYCROFT**  
Ali Baba bench from the Roycroft Inn, model 46

USA, c. 1905 | ash, oak  
19 h x 42 w x 14½ d in (48 x 107 x 37 cm)  
Carved Roycroft Inn production number to leg  
'R046' with orb and cross mark to one end.

\$3,000–4,000





306

**ARTS & CRAFTS**  
**Prairie-style window**

USA, early 20th century  
leaded glass, painted wood  
28 h x 36½ w x 1¾ d in (71 x 93 x 4 cm)  
\$1,000–1,500

307

**ROYCROFT**  
**rare child's rocker**

USA, c. 1906 | oak, leather, brass  
28 h x 19¼ w x 28½ d in (71 x 49 x 72 cm)  
Carved orb and cross mark and  
signature to front 'Marjorie'.  
\$1,000–1,500

308

**HARRY ST. JOHN DIXON**  
**rare desk set with peacock feathers**

USA, 1923  
hammered copper with applied patina,  
enamel, hardboard, leather  
16 h x 22 w in (41 x 56 cm)  
Set is comprised of a table lamp base, blotter  
with blotter ends, rocker blotter, inkwell,  
pen tray, and an ashtray and matchbox holder.  
Lamp base measures: 8.5 dia x 18 h inches  
(including socket). Incised signature and date to  
underside of pen tray and interior of inkwell lid  
'Harry Dixon San Francisco 1923'.  
**LITERATURE:** *The Arts and Crafts Movement in  
California: Living the Good Life*, Trapp, pg. 269  
for items with a similar design in the permanent  
collection of The Oakland Museum  
**PROVENANCE:** Collection of Robert Weber,  
Atherton, CA | Thence by descent  
Private Collection  
\$4,000–6,000





309

**ALBERT BERRY**  
vases and desk items, nine pieces

USA, c. 1925 | Berry's Craft Shop  
hammered copper with  
applied patina, nickel silver  
11½ h x 4 dia in (29 x 10 cm)  
This lot is comprised of five vases, one stamp  
box, one letter holder, and a table crumber.  
Impressed signature to underside of eight  
pieces 'Berry's Craft Shop Their Mark Seattle'.

\$1,000–1,500

310

**BENEDICT STUDIOS, ATTRIBUTION**  
table lamp

USA, early 20th century  
hammered copper, slag glass  
22½ h x 19¾ dia in (57 x 50 cm)

\$1,000–1,500

311

**ROBERT JARVIE**  
rare Kappa candlestick

USA, 1905–12 | copper with applied patina  
13¾ h x 6 dia in (35 x 15 cm)  
Impressed signature and title  
to underside 'Jarvie K'.

\$1,000–1,500



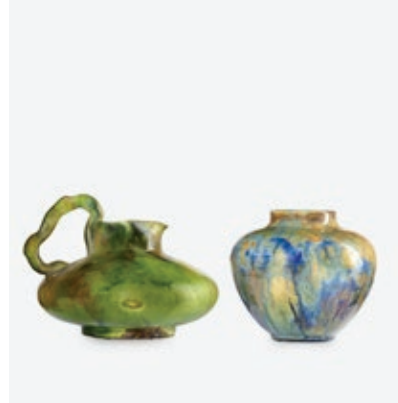
312

**BOSTON SCHOOL**  
collection of fourteen enameled boxes

USA, early 20th century | enameled copper  
2½ h × 6½ dia in (6 × 17 cm)  
These works feature decorations of peacocks,  
schooners, and stylized flora. Smallest box  
measures: 3.5 dia × 1.75 h inches.

**PROVENANCE:** Private Collection, New York  
(several from Rago Auctions, one from Skinner's)  
**\$10,000–15,000**





313

**CLIFTON POTTERY  
AND THEOPHILUS BROUWER**  
Crystal Patina vase and flame-painted vase

USA, c. 1905  
glazed earthenware, glazed porcelain  
6¾ h x 8 w x 5 d in (17 x 20 x 13 cm)  
Brouwer vase measures: 4.75 dia x 5 h inches.  
Marked to underside of each example.

\$750-1,000

315

**THEOPHILUS A. BROUWER  
FOR MIDDLE LANE POTTERY**  
flame-painted vase

USA, early 20th century | glazed earthenware  
8 h x 5 dia in (20 x 13 cm)  
Incised manufacturer's mark to underside  
'Flame' with whale bone.

**PROVENANCE:** Rago Auctions  
Private Collection, New York

\$1,200-1,800

314

**THEOPHILUS A. BROUWER  
FOR MIDDLE LANE POTTERY**  
flame-painted vase

USA, early 20th century | glazed earthenware  
7¼ h x 6 dia in (18 x 15 cm)  
Impressed signature to underside  
'M' with whalebone.

**PROVENANCE:** Rago Auctions  
Private Collection, New York

\$1,000-1,500

316

**THEOPHILUS A. BROUWER  
FOR MIDDLE LANE POTTERY**  
flame-painted vase and pitcher

USA, early 20th century | glazed earthenware  
4 h x 5 w x 5½ d in (10 x 13 x 14 cm)  
Vase measures: 4 dia x 3.5 h inches.  
Marked to each example.

\$1,000-1,500

317

**THEOPHILUS A. BROUWER  
FOR MIDDLE LANE POTTERY**  
large flame-painted lamp base  
with modeled flora

USA, early 20th century | glazed earthenware  
12 h x 7½ dia in (30 x 19 cm)  
Incised signature to underside  
'Flame' with whalebone.

**PROVENANCE:** Rago Auctions  
Private Collection, New York

\$3,500-4,500

318

**THEOPHILUS A. BROUWER  
FOR MIDDLE LANE POTTERY**  
flame-painted vase with modeled leaves

USA, early 20th century | glazed earthenware  
3½ h x 5 dia in (9 x 13 cm)  
Incised signature to underside  
'Brouwer' with whalebone.

\$2,000-3,000







319  
**THEOPHILUS A. BROUWER  
 FOR MIDDLE LANE POTTERY**  
 flame-painted vessels, set of three

USA, early 20th century | glazed earthenware  
 2 h x 6¼ dia in (5 x 16 cm)  
 Marked to each example.

\$1,000–1,500

321  
**THEOPHILUS A. BROUWER  
 FOR MIDDLE LANE POTTERY**  
 small flame-painted vessels, set of two

USA, early 20th C. | glazed earthenware  
 4 h x 4 dia in (10 x 10 cm)  
 Smaller vessel measures: 4 dia x 3.5 h inches.  
 Marked to each example.

\$1,000–1,500

320  
**THEOPHILUS A. BROUWER  
 FOR MIDDLE LANE POTTERY**  
 flame-painted vase with modeled vines

USA, early 20th century | glazed earthenware  
 4 h x 3¾ dia in (10 x 10 cm)  
 Incised signature to underside  
 'Brouwer 742' with whalebone.

\$1,500–2,000

322  
**L. & J.G. STICKLEY**  
 sideboard, model 731

USA, 1907–12 | oak, patinated brass  
 49 h x 72 w x 26 d in (124 x 183 x 66 cm)  
 Decal manufacturer's label to interior of drawer  
 'L. & J.G. Stickley Handcraft'.

\$2,000–3,000

323  
**L. & J.G. STICKLEY**  
 daybed, model 292

USA, 1912–20 | oak, vinyl  
 28 h x 80 w x 29¾ d in (71 x 203 x 76 cm)  
 Branded manufacturer's mark to lower leg  
 'The Work of L. & J.G. Stickley'.

\$1,800–2,200





324

**DANKMAR ADLER AND LOUIS SULLIVAN**  
balustrade from the Guaranty Building, Buffalo

USA, 1894 | Winslow Brothers  
enameled cast iron  
35 h x 12 w x 2 d in (89 x 30 x 5 cm)

**PROVENANCE:** Guaranty Building, Buffalo, NY  
Private Collection, Chicago | Private Collection

\$1,200–1,800



326

**WILLIAM DAY GATES**  
FOR TECO POTTERY  
vase, model 447

USA, 1902–20 | glazed earthenware  
6¼ h x 2¼ dia in (16 x 6 cm)  
Impressed manufacturer's mark  
to underside 'Teco'.

\$1,000–1,500



325

**WILLIAM BRYCE MUNDIE**  
FOR TECO POTTERY  
vase, model 284

USA, 1904–20 | glazed earthenware  
11 h x 5 dia in (28 x 13 cm)  
Impressed manufacturer's mark  
to underside 'Teco'.

**LITERATURE:** *Teco: Art Pottery of the  
Prairie School*, Darling, pg. 148

\$1,500–2,000

327

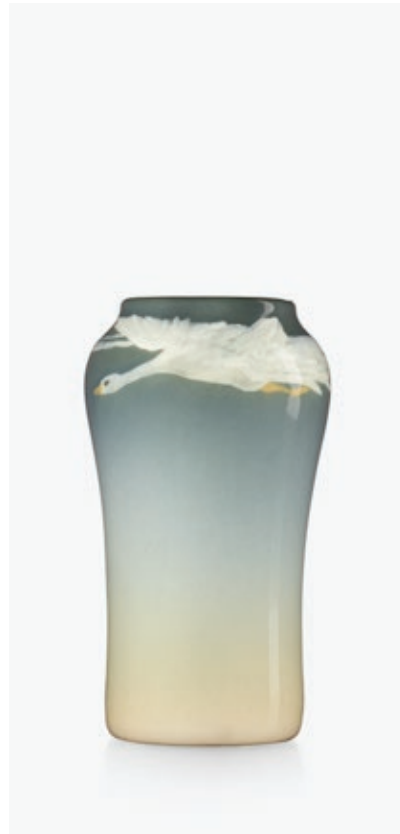
**FERNAND MOREAU**  
FOR TECO POTTERY  
vase, model 434

USA, 1904–1920 | glazed earthenware  
11 h x 5½ w x 6½ d in (28 x 14 x 17 cm)  
Vase features a gunmetal-colored shift as a  
result of black copper crystals caused during  
the firing. Impressed manufacturer's  
mark to underside 'Teco'. Incised number  
to underside '434'.

**LITERATURE:** *Teco: Art Pottery of the  
Prairie School*, Darling, pg. 158

\$3,000–4,000





328

**CARL SCHMIDT  
FOR ROOKWOOD POTTERY**  
Iris Glaze vase with mushrooms

USA, 1908 | glazed earthenware  
10¼ h × 5½ dia in (26 × 14 cm)  
Impressed signature, date, and number  
to underside 'Flame mark/614D/W/CS'.

\$2,500–3,500

329

**LORINDA EPPLY  
FOR ROOKWOOD POTTERY**  
Iris Glaze vase with geese in flight

USA, 1906 | glazed earthenware  
6 h × 3½ dia in (15 × 9 cm)  
Impressed signature, date, and number  
'Flame mark/985E/W/LE'.

\$1,000–1,500

330

**EDWARD T. HURLEY  
FOR ROOKWOOD POTTERY**  
Iris Glaze vase with fish

USA, 1906 | glazed earthenware  
7½ h × 4 dia in (19 × 10 cm)  
Impressed signature, date, and number to  
underside 'Flame mark/917C/W/E.T.H.'.

\$1,000–1,500

331

**CARL SCHMIDT  
FOR ROOKWOOD POTTERY**  
Iris Glaze vase with mushrooms

USA, 1909 | glazed earthenware  
10¼ h × 4½ dia in (26 × 11 cm)  
Signed, dated and numbered  
'Flame mark/1660C/W/SC'.

\$1,000–1,500

332

**KATARO SHIRAYAMADANI FOR  
ROOKWOOD POTTERY**  
Modeled Mat vase

USA, 1904 | glazed porcelain  
9 h × 6 dia in (23 × 15 cm)  
Impressed signature, date, and number to  
underside 'Flame mark/IV/176CZ/  
artist cipher/seconded mark'.

\$3,000–5,000





333

**FRED ROTHENBUSCH  
FOR ROOKWOOD POTTERY  
banded scenic Vellum vase**

USA, 1916 | glazed earthenware  
13 h x 6½ dia in (33 x 17 cm)  
Impressed signature, date, and number to  
underside 'Flame mark/XVI/900A/V/FR'.

\$1,800–2,200

335

**EDWARD T. HURLEY  
FOR ROOKWOOD POTTERY  
scenic Vellum vase**

USA, 1921 | glazed porcelain  
11¼ h x 5 dia in (29 x 13 cm)  
Impressed signature, date, and number to  
underside 'Flame mark/XXI/939B/V/ETH'.

\$1,500–2,000

334

**CARL SCHMIDT  
FOR ROOKWOOD POTTERY  
Vellum cabinet vase with dragonfly**

USA, 1904 | glazed earthenware  
3½ h x 3¼ dia in (9 x 8 cm)  
Signed, dated and numbered  
'Flame mark/1064/V/SC'.

\$1,200–1,800

336

**SALLIE COYNE  
FOR ROOKWOOD POTTERY  
scenic Vellum vase**

USA, 1921 | glazed porcelain  
7 h x 4 dia in (18 x 10 cm)  
Signed, dated and numbered to underside  
'Flame mark/938D/V/SEC'.

\$1,000–1,500

337

**KATARO SHIRAYAMADANI  
FOR ROOKWOOD POTTERY  
three-handled Scenic Vellum vase  
with Canada geese**

USA, 1908 | glazed earthenware  
6½ h x 8 dia in (17 x 20 cm)  
Signed and dated 'Flame mark/830D/V'  
with artist cipher.

\$2,000–3,000



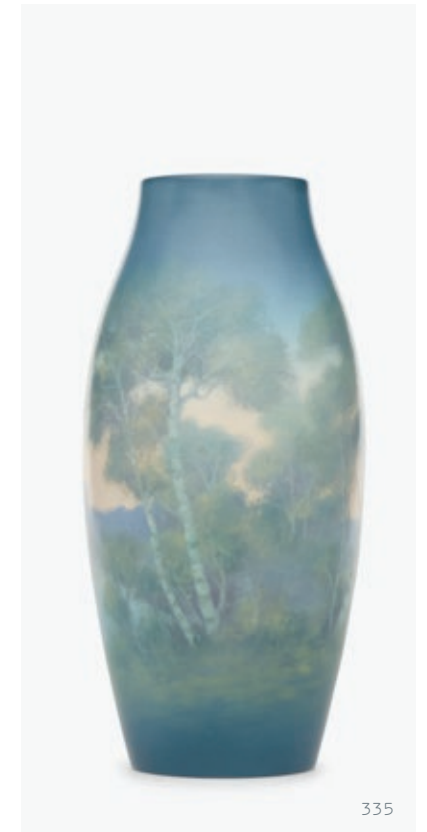
333



334



336



335



337



338

**LORINDA EPPLY  
FOR ROOKWOOD POTTERY**  
large Ivory Jewel Porcelain vase with flowers

USA, 1929 | glazed porcelain  
12½ h x 10 dia in (32 x 25 cm)  
Impressed signature, date, and number  
to underside 'Flame mark/XXIX/6080/LE'.

\$1,500–2,000

339

**WILLIAM HENTSCHEL  
FOR ROOKWOOD POTTERY**  
Jewel Porcelain vase with fish

USA, 1934 | glazed porcelain  
6½ h x 4 dia in (17 x 10 cm)  
Signed and dated 'Flame mark/S/WEH'.

\$1,000–1,500

340

**EDWARD T. HURLEY  
FOR ROOKWOOD POTTERY**  
Sea Green vase with three herons and full moon

USA, 1902 | glazed earthenware  
7¼ h x 3¼ dia in (18 x 8 cm)  
Impressed signature, date, and number to  
underside 'Flame mark/II/901/D/G/E.T. Hurley'.

\$1,000–2,000

341

**JENS JENSEN  
FOR ROOKWOOD POTTERY**  
Ivory Jewel Porcelain vase with birds

USA, 1933 | glazed porcelain  
8 h x 4¼ dia in (20 x 11 cm)  
Impressed signature and date  
to underside 'Flame mark/S/WEH'.

\$800–1,200

342

**SALLIE TOOHEY  
FOR ROOKWOOD POTTERY**  
Sea Green vase with dogwood blossoms

USA, 1901 | glazed earthenware  
12 h x 6½ dia in (30 x 17 cm)  
Signed, dated, and numbered  
'Flame mark/909B/G/ST'.

\$2,500–3,500

343

**MARIA LONGWORTH NICHOLS STORER  
FOR ROOKWOOD POTTERY**  
early Limoges plates with crabs and fish,  
set of two

USA, c. 1890 | glazed and gilt earthenware  
10¾ dia in (27 cm)  
Gilt signature to verso of crab plate 'M.L.N.'.

**PROVENANCE:** Collection of David W. and  
Katherine M. Glover  
Cincinnati Art Galleries,  
*The Glover Collection: Rookwood Pottery*,  
8 June 1991, Lot 780 (fish plate)

\$1,000–1,500



344

**GRACE YOUNG AND  
KATARO SHIRAYAMADANI  
FOR ROOKWOOD POTTERY**  
Standard Glaze mugs, set of four

USA, 1891, 1897 | glazed earthenware  
4½ h x 4¾ w x 3½ d in (11 x 12 x 9 cm)  
Mugs feature ghoulish creatures, three  
by Shirayamadani and one by Young.  
Three signed, dated and numbered  
'Flame mark/587/W/L with artist cipher.  
One signed, dated, and numbered  
'Flame mark/587C/GY'.

\$1,500-2,000

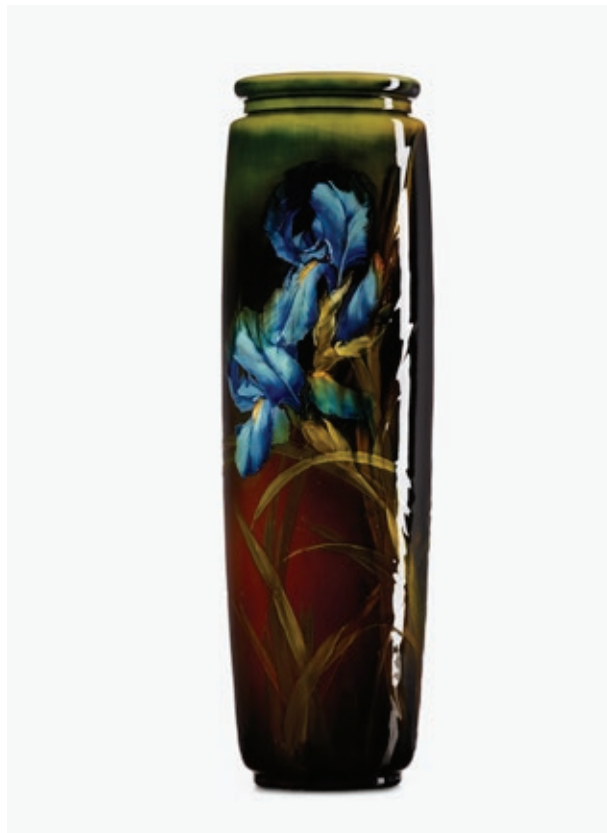


345

**ALBERT R. VALENTIEN  
FOR ROOKWOOD POTTERY**  
tall Standard Glaze Light vase with irises

USA, 1892 | glazed earthenware  
16½ h x 5½ dia in (42 x 14 cm)  
This work features exceptional modeling.  
Signed and dated 'Flame mark/589A/W/A.R.V/L.'

\$1,000-1,500



346

**MATTHEW DALY  
FOR ROOKWOOD POTTERY**  
Standard Glaze vase with lotuses

USA, 1902 | glazed earthenware  
11¾ h x 5 dia in (30 x 13 cm)  
Signed, dated, and numbered  
'Flame mark/904C/M.A.Daly'  
with seconded mark.

\$800-1,200



347

**STURGIS LAURENCE  
FOR ROOKWOOD POTTERY**  
Standard Glaze portrait vase

USA, 1900 | glazed earthenware  
11 h x 7½ dia in (28 x 19 cm)  
This work features a portrait after  
Rembrandt van Rijn. Impressed  
signature, date, and number to underside  
'Flame mark/581D/After Rembrandt/SL.'

\$1,000-2,000

348

**GRACE YOUNG  
FOR ROOKWOOD POTTERY**  
Standard Glaze Native American portrait vase

USA, 1899 | glazed earthenware  
11¼ h x 3 dia in (29 x 8 cm)  
Vase features a portrait of Suriap from the  
Ute tribe. Signed, titled and dated to underside  
'Flame mark/589D/artist cipher/Ute-Suriap'.

**PROVENANCE:** Rago Auctions  
Private Collection, New York

\$1,500-2,000





349

**ROYCROFT**  
**sewing rocker, model 39a**

USA, c. 1906 | oak, Japan leather, metal tacks  
34 h x 19 w x 31 d in (86 x 48 x 79 cm)  
Carved orb and cross mark to front of seat.

\$1,000-1,500

351

**ROYCROFT**  
**bracelets, set of five**

USA, early 20th century  
hand-hammered sterling silver  
Each measures approx.: 2.5 w x 2 d x .5 h inches.  
Impressed 'Sterling' with orb and cross mark  
to each example; four impressed 'Roycroft'.

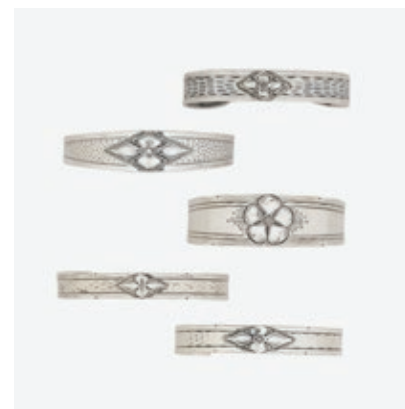
\$1,000-1,500

350

**ROYCROFT**  
**rare Old Willow Stump bookends, pair**

USA, c. 1912 | patinated copper  
6 1/2 h x 4 w x 5 d in (17 x 10 x 13 cm)  
Impressed early orb and cross mark  
to each example.

\$1,000-1,500



352

**ROYCROFT**  
**rare easel**

USA, c. 1906 | oak  
93 h x 22 w x 30 1/2 d in (236 x 56 x 77 cm)  
Carved orb and cross mark  
to front with 'A.R. Kruger'.

\$5,000-7,000



353

**NORMA PEIRCE  
FOR GRUEBY FAIENCE COMPANY**  
large vase with leaves

USA, 1904–10 | glazed earthenware  
11 h × 8½ dia in (28 × 22 cm)  
Incised signature to underside 'P' in triangle.  
Impressed manufacturer's mark  
to underside 'Grueby Faience Co. Boston U.S.A.'  
with lotus symbol.

\$2,500–3,500

355

**GRUEBY FAIENCE COMPANY**  
water lily frieze, set of three

USA, c. 1915  
glazed earthenware decorated in cuerda  
6 h × 6 w × 1 d in (15 × 15 × 3 cm)  
Impressed manufacturer's mark to verso  
of each example 'Grueby Boston'.

\$800–1,200

357

**GRUEBY FAIENCE COMPANY**  
tile with water lilies

USA, c. 1915  
glazed earthenware decorated in cuerda, oak  
6 h × 6 w in (15 × 15 cm)  
Tile is in a recent Dard Hunter Studio frame.  
Impressed manufacturer's mark to verso  
of tile 'Grueby Boston'.

\$800–1,200

354

**WILHELMINA POST  
FOR GRUEBY FAIENCE COMPANY**  
rare lobed vase

USA, 1898–1904 | glazed earthenware  
5½ h × 6 dia in (14 × 15 cm)  
Incised signature to underside 'WP'.  
Impressed manufacturer's mark  
to underside 'Grueby Pottery Boston'.

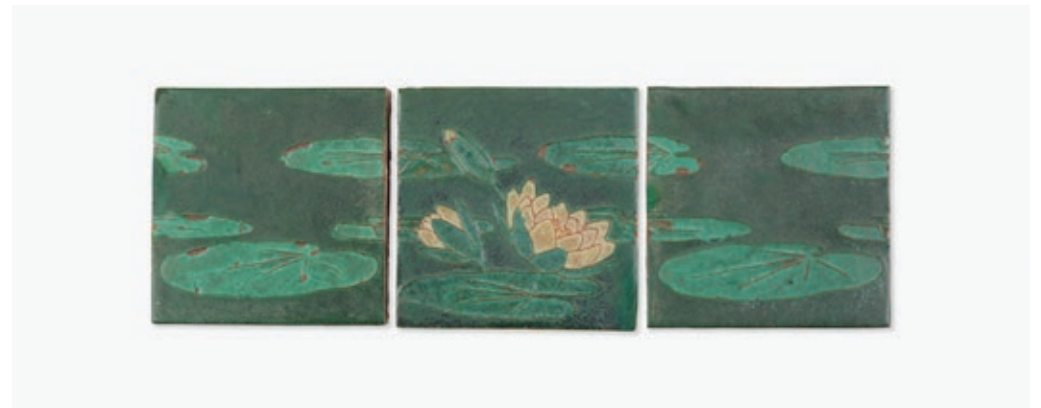
\$1,500–2,000

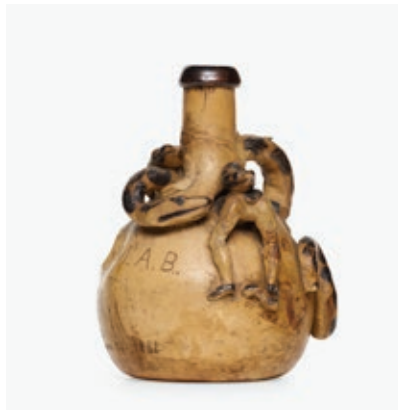
356

**GRUEBY FAIENCE COMPANY**  
Evangelist tiles, set of four

USA, c. 1915  
glazed earthenware decorated in cuerda seca  
8 h × 8 w × ¾ d in (20 × 20 × 2 cm)  
Each tile depicts one of the Four Evangelists'  
symbols: an angel, a winged lion, a winged bull,  
and an eagle.

\$1,500–2,000





358

**CORNWALL AND WALLACE KIRKPATRICK FOR ANNA POTTERY**  
rare Temperance jug with snakes and figure

USA, 1881 | glazed stoneware  
9 h x 6½ w x 7 d in (23 x 17 x 18 cm)  
Incised signature to underside 'XTX'.  
Incised signature, title and date to body  
'M.A.B. C & W.K. Anna III. 1881'.

**PROVENANCE:** Skinner Auctions, Sale 1406,  
Lot 736 | Private Collection, New York

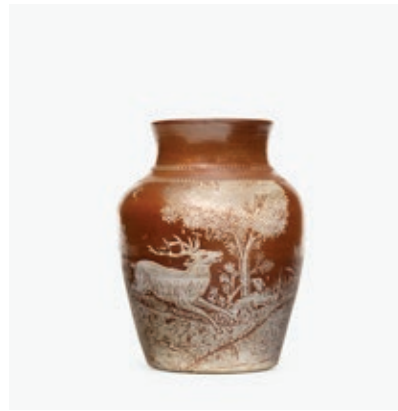
**\$1,000–2,000**

360

**LINNA IRELAN FOR ROBLIN POTTERY**  
bisque vase with dogwood and butterflies

USA, 1898–1906 | incised earthenware  
5½ h x 3½ w x 3 d in (14 x 9 x 8 cm)  
Incised signature and number to underside  
'L.I. 86'. Impressed manufacturer's mark to  
underside 'Roblin'.

**\$1,000–1,500**



359

**GRAHAM POTTERY**  
rare vase with hunting scene

USA, c. 1885  
salt-glazed and acid-etched stoneware  
7 h x 5½ dia in (18 x 14 cm)  
Impressed manufacturer's mark to underside  
'Chas. Graham Patd. April 7 1885'.

**LITERATURE:** *Art Pottery of the United States*,  
Evans, pg. 115 illustrates this example

**PROVENANCE:** Rago Auctions  
Private Collection, New York

**\$1,000–1,500**

361

**LINNA IRELAN FOR ROBLIN POTTERY**  
cabinet vase with violets

USA, 1898–1906  
glazed and slip-painted earthenware  
4½ h x 2¼ dia in (11 x 6 cm)  
Incised signature to underside 'Linna Irelan'.  
Impressed manufacturer's mark to underside  
'Roblin' with bear.

**\$1,500–2,000**



362

**M. LOUISE STOWELL**  
ten works after Harvey Ellis and Ada Howe Kent

USA, 1890–1910  
color block prints on paper,  
photographic reproductions on paper  
7 h x 9 w in (18 x 23 cm)

Lot is comprised of three Japonesque color block  
prints and seven photographic reproductions  
(all pictured online). Signed to each example,  
seven with hand-written titles.

**\$1,000–2,000**





363

**DIRK VAN ERP  
rare humidior**

USA, 1911–12  
hammered copper with applied patina  
3½ h × 10 w × 6½ d in (9 × 25 × 17 cm)  
Impressed closed-box windmill mark to  
underside 'Dirk Van Erp'. Monogrammed CCR.

\$1,200–1,800



364

**KARL KIPP FOR THE TOOKAY SHOP  
rare hinged box**

USA, 1912–15  
hammered copper with applied patina, silver  
2 h × 6½ w × 3 d in (5 × 17 × 8 cm)  
Impressed signature to underside 'KK'.  
Monogrammed W.

\$1,000–1,500



365

**WALTER UPHAM JENNINGS  
AND KARL KIPP  
Italian Polychrome vase, ladle, and lidded box**

USA, early 20th century  
hammered copper with applied patina, enamel  
3¼ h × 3¾ dia in (8 × 10 cm)  
Lot is comprised of an Italian Polychrome vase  
by Walter Upham Jennings, a ladle by Karl Kipp,  
and a Roycroft-style box; vase measures:  
3.5 dia × 2 h inches and ladle measures:  
7 h × 3.5 w × 3 d inches. Impressed orb and cross  
mark with two dots to vase. Impressed artist  
cipher and monogram J to ladle.

\$1,500–2,000



366

**WALTER UPHAM JENNINGS  
FOR ROYCROFT  
Italian Polychrome vase with dogwood blossoms**

USA, 1916–20  
brass-washed hammered copper, enamel  
7 h × 2½ dia in (18 × 6 cm)  
Impressed orb and cross mark with two  
dots to underside.

\$1,500–2,000



367

**DENVER POTTERY  
Denaura vases with mistletoe, set of two**

USA, c. 1903 | glazed earthenware  
7 h × 3½ dia in (18 × 9 cm)  
Both impressed with manufacturer's  
marks 'Denver/Denaura'.

\$1,500–2,000



368

**DENVER POTTERY  
Denaura vase with flowers**

USA, 1901–05 | glazed earthenware  
5¼ h × 6 dia in (13 × 15 cm)  
Impressed and incised manufacturer's  
mark to underside 'Denver Denaura  
Forward Denaura USA'.

\$2,000–3,000



369

**NORTH DAKOTA SCHOOL OF MINES  
low bowl and covered jar**

USA, 1927/48 | glazed and carved earthenware  
6¼ h × 6 dia in (16 × 15 cm)  
Bowl signed and dated to underside 'GMB '27'.  
Covered jar signed, dated and titled to underside  
'Miller Jan. 22, 1949 Chinese Ginger Jar Mat'.  
Blue NDSM stamp to each.

**PROVENANCE:** *North Dakota School of Mines  
Pottery: A History and Comparative Study*,  
Forster, pg. 189, for a similar example  
of the covered jar

\$1,000–1,500



370

**MARGARET CABLE FOR NORTH DAKOTA  
SCHOOL OF MINES  
geometric vase**

USA, after 1913  
glazed and incised earthenware  
4¾ h × 4½ dia in (12 × 11 cm)  
Stamped manufacturer's mark to underside  
'University of North Dakota Made at School  
of Mines N.D. Clay Grand Forks N.D.'.  
Incised signature and number  
to underside 'M. Cable 55 L'.

\$1,000–1,500

371

**GUSTAV STICKLEY**  
**double-door bookcase, model 719**

USA, c. 1905–12 | oak, glass, copper  
56 h × 60½ w × 13 d in (142 × 154 × 33 cm)  
Bookcase features three fixed shelves on each side. Red manufacturer's decal to interior and remnants of manufacturer's paper label to reverse.

\$2,500–3,500



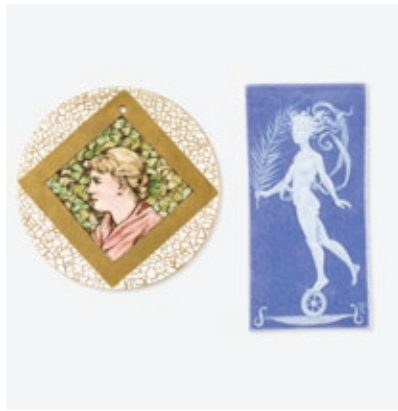
372

**GUSTAV STICKLEY**  
**double-door bookcase, model 717**

USA, 1912–16 | oak, glass, copper  
56¼ h × 47¾ w × 13 d in (143 × 121 × 33 cm)  
Bookcase features three fixed shelves. Manufacturer's branded mark to interior.

\$2,500–3,500





373

**MARY LOUISE MCLAUGHLIN  
FOR UNIVERSITY CITY**  
tile with nude and early portrait roundel

USA, 1883/1912  
glazed, pâte-sur-pâte, and  
china-painted porcelain  
6½ h × 3¼ w in (17 × 8 cm)  
Roundel measures: 5,5 inches dia. Tile with  
glazed signature and date to recto 'MCL' and  
carved signature and date to verso 'U.C. 1912'.  
Roundel signed and dated to verso 'MLMcL  
1883' with illegible pencil markings.

\$1,000-1,500

375

**SARAH MCLAUGHLIN  
FOR WELLER POTTERY**  
Hudson Scenic vase with fisherman

USA, 1917-34 | glazed earthenware  
12 h × 6½ dia in (30 × 17 cm)  
Glazed manufacturer's mark  
to underside 'Weller Pottery'.  
Glazed signature to body 'McLaughlin'.

\$1,800-2,200



374

**RIESSNER, STELLMACHER & KESSEL**  
Amphora vase with snowberries

Austria, c. 1900 | glazed earthenware  
9¼ h × 5 dia in (23 × 13 cm)

\$1,000-1,500

376

**OUACHITA POTTERY**  
rare vase with dogwood blossoms

USA, 1905-08 | glazed earthenware  
4¼ h × 5½ dia in (11 × 14 cm)  
Incised signature to underside 'MD'.  
Impressed manufacturer's mark  
to underside 'Ouachita Hot Springs, Ark.'.

\$1,000-1,500



377

**NEW ORLEANS ART POTTERY**  
two vases with heraldic decoration

USA, c. 1890 | glazed earthenware  
8¼ h × 8 dia in (21 × 20 cm)  
Larger vase measures: 12 dia × 16 h inches.  
Inscribed to body of larger vase 'Carpenter'.  
Impressed manufacturer's mark to underside  
of smaller vase 'N.O. Art Pottery Co.'.

\$2,000-3,000



378

**AMERICAN  
collection of stereoscopic photographs**

USA, late 19th/early 20th century  
photographs  
Lot is comprised of a complete set of  
*Wheeler's Geographical Survey West of the  
100th Meridian (U.S.), 1870-1880* by Timothy  
O'Sullivan and William W. Bell, approximately  
118 Western and 60 Eastern United States  
view cards, 19 *The Grand Canyon Through the  
Stereoscope* view cards, a carte de visite for  
John Charles Frémont, and two antique  
stereoscopic card viewers.

\$2,000-3,000

379

**EDWARD S. CURTIS  
Eskadi — Apache**

USA, 1903 | John Andrew & Sons  
photogravure on paper  
14¾ h x 10¼ w in (37 x 26 cm)  
This work is plate number 16 from Curtis' series  
*The North American Indian*. Printed signature,  
title and date to under image 'Eskadi - Apache  
From Copyright Photograph 1903 by E. S. Curtis  
Photogravure John Andrew & Sons'.  
Sold with an albumen print by Charles M. Bell,  
"Yellow Bull Nez Perce Chief," c. 1879,  
sight: 15.75 h x 11.5 w inches.

\$1,200-1,800



380

**VANCE/AVON FAIENCE  
vase with owls and full moon**

USA, c. 1905 | glazed earthenware  
8 h x 6½ dia in (20 x 17 cm)  
Numbered to underside '133 1277'.

\$1,000-1,500



381

**FREDERICK HURTEN RHEAD  
FOR AVON POTTERY  
jardinière and pedestal**

USA, 1902-03  
glazed squeezebag-decorated earthenware  
44½ h x 18½ dia in (113 x 47 cm)

\$1,500-2,000

382

**FREDERICK HURTEN RHEAD  
FOR AVON POTTERY  
jardinière and pedestal**

USA, 1902-03  
glazed squeezebag-decorated earthenware  
32½ h x 18 dia in (83 x 46 cm)  
Incised signature and number to  
underside of jardinière 'F.H. 1014'.

\$1,500-2,000



383

**STYLE OF WILLIAM MORRIS**  
**low pile rug**

India, 21st century | hand-woven wool  
118 h x 96 w in (300 x 244 cm)

\$800-1,200

385

**DONEGAL STYLE**  
**French Accents pile rug**

Turkey, 21st century | hand-woven wool  
144 h x 112 w in (366 x 284 cm)

\$1,500-2,000

384

**DONEGAL STYLE**  
**French Accents pile rug**

Turkey, 21st century | hand-woven wool  
139 h x 110 w in (353 x 279 cm)  
Woven signature to verso 'F.A.'

\$1,500-2,000

386

**STYLE OF WILLIAM MORRIS**  
**low pile rug**

India, 21st century | hand-woven wool  
144 h x 110 w in (366 x 279 cm)

\$1,800-2,200

387

**L. & J.G. STICKLEY**  
**magazine stand, model 45**

USA, 1907-20 | oak  
45½ h x 21 w x 12 d in (116 x 53 x 30 cm)

\$1,000-1,500

388

**STICKLEY BROTHERS**  
**adjustable rocking chair with stool**

USA, early 20th century | oak, leather, chain  
36 h x 31 w x 37½ d in (91 x 79 x 95 cm)  
Stool measures: 14.75 h x 17 w x 12.25 d inches.  
Stamped model number to underside of chair  
234-631. Remnant of paper label to  
underside of stool.

**PROVENANCE:** Jordan-Volpe Gallery, New York  
Private Collection

\$1,000-1,500





389

**STYLE OF WILLIAM MORRIS**  
**low pile rug**

India, 21st century | hand-woven wool  
144 h x 108 w in (366 x 274 cm)

\$800-1,200

391

**STYLE OF WILLIAM MORRIS**  
**low pile rug**

India, 21st century | hand-woven wool  
118 h x 96 w in (300 x 244 cm)

\$800-1,200



390

**STYLE OF WILLIAM MORRIS**  
**low pile rug**

India, 21st century | hand-woven wool  
120 h x 96 w in (305 x 244 cm)

\$800-1,200

392

**STYLE OF WILLIAM MORRIS**  
**low pile rug**

India, 21st century | hand-woven wool  
142 h x 108 w in (361 x 274 cm)

\$1,000-1,500



393

**L. & J.G. STICKLEY**  
**dining table**

USA, 1912-20 | oak  
29½ h x 54 dia in (75 x 137 cm)  
Sold with eight 11-inch leaves; table  
measures 142 inches when fully extended.  
Decal manufacturer's label to underside  
'The Work of L. & J.G. Stickley'.

\$2,500-3,500



394

**L. & J.G. STICKLEY**  
**dining chairs models 820 and 822,**  
**set of five plus one**

USA, 1907-20 | oak, leather  
37 h x 27 w x 21 d in (94 x 69 x 53 cm)  
Lot is comprised of four side chairs  
and two armchairs. Side chair measures:  
36.25 h x 19.5 w x 17 d inches.  
Handcraft decals to five,  
The Work of... decal to one.

\$2,000-3,000





395

**BEATRICE WOOD, TECO,  
PAUL REVERE POTTERY  
AND PEWABIC POTTERY  
miniature vessels, set of five**

USA, 20th century | glazed earthenware  
4 h x 3 dia in (10 x 8 cm)  
Lot is comprised of a red Beatrice Wood vase  
signed 'Beato', a rare Teco vase with original  
paper label 'Teco Crystal no. 200 Gates Potteries  
Designed by Gates Chicago',  
two miniature Pewabic vases, one stamped  
with manufacturer's mark 'Pewabic Detroit',  
and one Paul Revere vase, signed 'PRP'.

\$500-700

396

**PEWABIC POTTERY  
vase**

USA, 1915-30 | glazed earthenware  
11 h x 7 dia in (28 x 18 cm)  
This work features an exceptional lustre glaze.  
Impressed circular manufacturer's mark to  
underside 'Pewabic Detroit'.

\$1,500-2,000

397

**PEWABIC POTTERY  
tall iridescent baluster vase**

USA, 1915-30 | glazed earthenware  
11 1/4 h x 5 dia in (29 x 13 cm)  
Impressed manufacturer's mark  
to underside 'Pewabic Detroit'.

\$1,200-1,800

399

**ALEXANDER W. ROBERTSON  
FOR ALBERHILL POTTERY  
vase**

USA, 1913 | glazed earthenware  
5 3/4 h x 5 w in (15 x 13 cm)  
Impressed and incised signature,  
date and number to underside  
'Alberhill A.W.R. 10/25/13 Cal. 151'.

\$2,000-3,000

398

**HUGH C. ROBERTSON  
FOR CHELSEA KERICAM ART WORKS  
jardinière with modeled chestnuts**

USA, 1872-89 | glazed earthenware  
4 h x 9 1/2 w x 8 d in (10 x 24 x 20 cm)  
Incised number to underside '1/5'.  
Impressed manufacturer's mark to underside  
'Chelsea Ceramic Art Works Robertson & Sons'.

**PROVENANCE:** Rago Auctions  
Private Collection, New York

\$1,000-1,500

400

**FRED H. ROBERTSON  
FOR F.H.R LOS ANGELES  
vase**

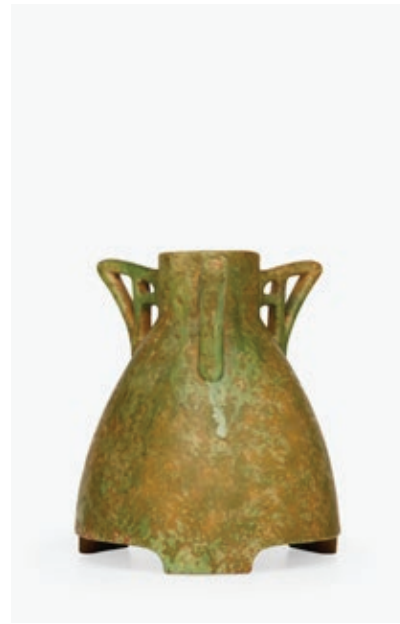
USA, c. 1920  
microcrystalline glazed earthenware  
4 1/2 h x 3 1/4 dia in (11 x 8 cm)  
Impressed manufacturer's mark  
to base 'F.H.R. Los Angeles'.

\$1,000-1,500





401  
**ROSEVILLE POTTERY**  
 large Egypto vase with flowers  
 USA, 1905 | glazed earthenware  
 14¾ h x 9 dia in (37 x 23 cm)  
 Raised seal to underside 'Rozane Ware Egypto'.  
**\$1,000–1,500**



402  
**ROSEVILLE POTTERY**  
 rare three-handled Crystallis vase  
 USA, c. 1926 | glazed earthenware  
 8¼ h x 7½ dia in (21 x 19 cm)  
**\$2,000–3,000**



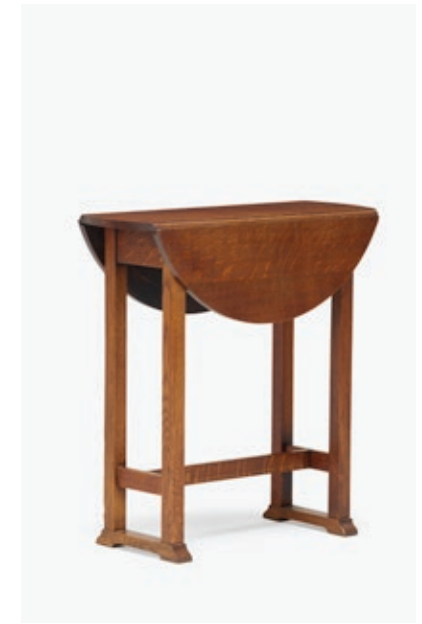
403  
**ROSEVILLE POTTERY**  
 Rozane Fudji vase and Chloron vase  
 USA, c. 1905 | glazed earthenware  
 8 h x 5 dia in (20 x 13 cm)  
 Chloron vase measures: 5.25 dia x 5.5 h inches.  
 Inscribed 'Chloron' and stamped manufacturer's  
 mark 'Rozane Ware' with artist cipher.  
**\$700–900**



404  
**ROSEVILLE POTTERY  
 AND AVON POTTERY**  
 twisting Woodland vase and vase with trees  
 USA, 1903/05–06 | glazed earthenware  
 6½ h x 3 w x 3 d in (17 x 8 x 8 cm)  
 Avon vase measures: 5.5 dia x 4.25 h inches.  
 Marked to underside of each example,  
 Avon vase dated 1903.  
**\$800–1,200**



405  
**GUSTAV STICKLEY**  
 music cabinet, model 70W  
 USA, 1912–16 | oak, hammered copper  
 47¼ h x 19¾ w x 16 d in (120 x 50 x 41 cm)  
 Cabinet features one door concealing four  
 adjustable shelves. Remnants of paper  
 manufacturer's label to back 'Craftsman'.  
 Branded signature to back 'Stickley'  
 with joiner's compass.  
**\$3,000–5,000**



406  
**L. & J.G. STICKLEY**  
 drop-leaf trestle table  
 USA, 1907–20 | oak  
 30 h x 28 w x 11 d in (76 x 71 x 28 cm)  
 Open measures: 28 dia x 30 h inches.  
 Stamped 401-2724 to underside.  
**\$1,000–1,500**



407  
**GUSTAV STICKLEY**  
 early bungalow trestle table  
 USA, c. 1901 | oak  
 28¼ h x 36 w x 23½ d in (72 x 91 x 60 cm)  
 A smaller variation of model 404.  
**PROVENANCE:** Rago Auctions,  
*Early 20th C. Design*, 18 October 2014, Lot 78  
 Private Collection  
**\$1,000–1,500**



408  
**GUSTAV STICKLEY**  
 umbrella stand  
 USA, early 20th century  
 oak, mahogany, copper  
 37 h x 17 w x 17 d in (94 x 43 x 43 cm)  
 Sold with a Stickley Brothers pedestal and an  
 Arts & Crafts pedestal. Remnant of paper label  
 to umbrella stand, Quaint tag to one pedestal.  
**\$1,200–1,800**





409

**VARIOUS ARTISTS**  
**collection of photographs of Native Americans**

USA, late 19th/early 20th century  
 photographs  
 10 h × 8 w × 1 d in (25 × 20 × 3 cm)  
 Lot is comprised of a 1894 photo album of  
 approximately 70 images, including 28  
 by Ella DeBell; approximately 28 photographs  
 by John Alvin Anderson, c. 1893-96;  
 approximately 28 stereoscopic view cards  
 by John K. Hillers from his *Indians of the Colorado  
 Valley* series, c. 1874; and a vintage stereoscopic  
 card viewer and small cedar box.

\$2,000–3,000

411

**WELLER POTTERY**  
**rare Fru-Russett vase**  
**with beetles and maple leaves**

USA, c. 1904 | glazed earthenware  
 5 h × 4½ w in (13 × 11 cm)  
 Signed to underside 'Weller'.

\$1,000–1,500

410

**WELLER POTTERY**  
**large Fru-Russett vase**  
**with male nude climbing tree**

USA, c. 1904 | glazed earthenware  
 16 h × 9 w × 8 d in (41 × 23 × 20 cm)  
 Incised signature to underside and body 'Weller'.

\$3,000–4,000

412

**WELLER POTTERY**  
**rare large Fru-Russett vase with snake and bird**

USA, c. 1904 | glazed earthenware  
 18 h × 7¾ w × 6 d in (46 × 20 × 15 cm)  
 Stamped manufacturer's mark  
 to underside 'Weller'.

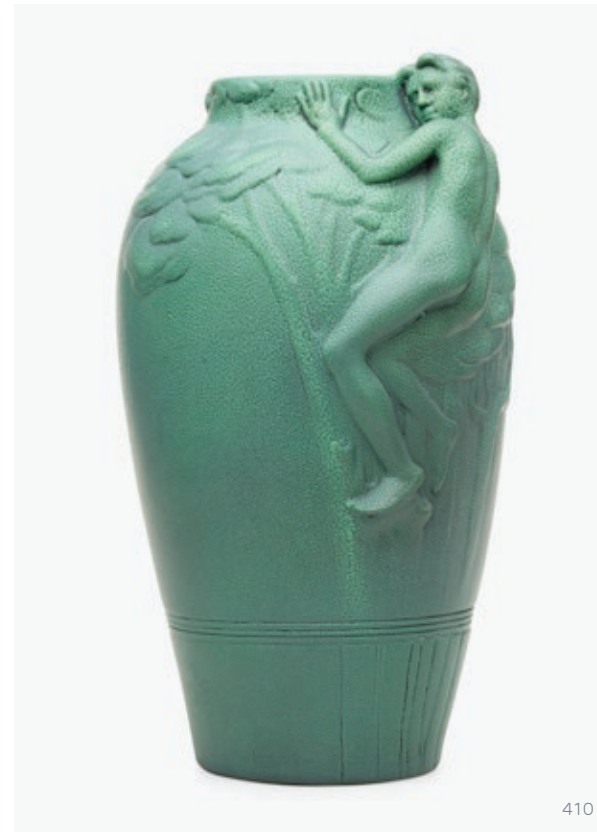
\$1,000–1,500

413

**WELLER POTTERY**  
**rare Fru-Russett vases, set of two**

USA, c. 1904 | glazed earthenware  
 3¾ h × 4 w × 3½ d in (10 × 10 × 9 cm)  
 Vases feature lilies, a frog, and dragonflies.  
 Dragonfly vase measures:  
 4 h × 3.5 w × 3.25 d inches. Stamped  
 manufacturer's mark to underside  
 of each example 'Weller'.

\$1,000–1,500



410



411



412



413





414

**L. & J.G. STICKLEY  
armchair and rocker**

USA, 1912–20 | oak, upholstery  
40 h × 28 w × 25½ d in (102 × 71 × 65 cm)  
Sold with a J.M. Young footstool. Rocker  
measures: 38 h × 27.75 w × 31.5 d inches.  
Footstool measures: 17 h × 19 w × 15.5 d inches.  
Branded manufacturer's mark to lower back  
of rocker 'The Work Of L. & J.G. Stickley'.

\$1,000–1,500

415

**GUSTAV STICKLEY, ETC.  
tabourets, set of four**

USA, early 20th century | oak  
18 h × 16 dia in (46 × 41 cm)  
Lot is comprised of two Gustav Stickley,  
one L. & J.G. Stickley, and one Stickley Brothers.  
Marked to underside of each example.

\$1,000–1,500

416

**L. & J.G. STICKLEY  
cabinet**

USA, 1912–20 | oak, glass, leaded glass  
62 h × 43½ w × 16 d in (157 × 110 × 41 cm)  
Cabinet features one fixed shelf over two  
adjustable shelves. Decal manufacturer's label  
to interior of door 'The Work of L. & J.G. Stickley'.

\$3,000–4,000





417

**VAN BRIGGLE POTTERY**  
**large vase**

USA, 1908–11 | glazed earthenware  
15¼ h × 6¾ dia in (39 × 17 cm)  
Incised signature and number  
to underside 'AA Van Briggle Colo. Spgs 740'.

\$1,000–1,500

418

**ARTUS VAN BRIGGLE**  
**FOR VAN BRIGGLE POTTERY**  
**large early vase with poppies**

USA, c. 1903 | glazed earthenware  
11 h × 10½ dia in (28 × 27 cm)

**LITERATURE:** *A Collector's Guide to*  
*Van Briggle Pottery*, Nelson, Crouch, Demmin,  
and Wyman Newton, pg. 149, no. 150

\$1,000–1,500



419

**ARTUS VAN BRIGGLE**  
**FOR VAN BRIGGLE POTTERY**  
**rare early vase with morning glories**

USA, 1903 | glazed earthenware  
11½ h × 4¾ dia in (29 × 12 cm)  
Incised signature, date and number  
to underside 'AA Van Briggle, 1903, III'.  
Stamped number to underside '208'.

\$2,000–3,000

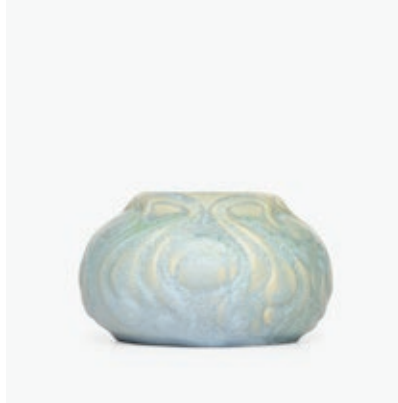
420

**ARTUS VAN BRIGGLE**  
**FOR VAN BRIGGLE POTTERY**  
**early vase with peacock feathers**

USA, 1903 | glazed earthenware  
11¼ h × 3¾ dia in (29 × 10 cm)  
Incised signature, date and number  
to underside 'AA Van Briggle 1903 III'.  
Stamped number to underside '174'.

\$1,000–1,500





421

**ARTUS VAN BRIGGLE  
FOR VAN BRIGGLE POTTERY  
early vase with leaves**

USA, 1902 | glazed earthenware  
6 h x 3 3/4 dia in (15 x 10 cm)  
Incised signature, date and number  
to underside 'AA Van Briggle 1902 III'.

\$1,500-2,000

423

**ARTUS VAN BRIGGLE  
FOR VAN BRIGGLE POTTERY  
early vase with stylized peacock feathers**

USA, 1903 | glazed earthenware  
3 1/2 h x 5 dia in (9 x 13 cm)  
Incised signature, date and number  
to underside 'AA Van Briggle 1903 III 146'.

\$1,000-1,500

422

**ARTUS VAN BRIGGLE  
FOR VAN BRIGGLE POTTERY  
early vase with columbines**

USA, 1903 | glazed earthenware  
6 h x 4 1/4 dia in (15 x 11 cm)  
Incised signature, date and number  
to underside 'AA Van Briggle 1930 III'.

Stamped number to underside '183'.

\$1,000-1,500

424

**VAN BRIGGLE POTTERY  
trivet tile with trees**

USA, c. 1905  
glazed earthenware decorated in cuerca  
6 h x 6 w in (15 x 15 cm)

\$700-900



425

**FREDERICK WALRATH  
rare lamp base with conventionalized flowers**

USA, 1908-18  
glazed earthenware, patinated metal  
23 1/2 h x 7 1/2 dia in (60 x 19 cm)  
Vase measures: 7.5 dia x 14 h inches.  
Incised signature to underside  
'Walrath Pottery MI'.

\$3,000-4,000

426

**AMERICAN ENCAUSTIC TILING CO.  
Schooner architectural tiles, set of two**

USA, c. 1925 | glazed earthenware  
24 h x 12 w x 2 d in (61 x 30 x 5 cm)  
Impressed manufacturer's mark  
to verso of each example 'AET CO.'.

\$1,000-1,500

427

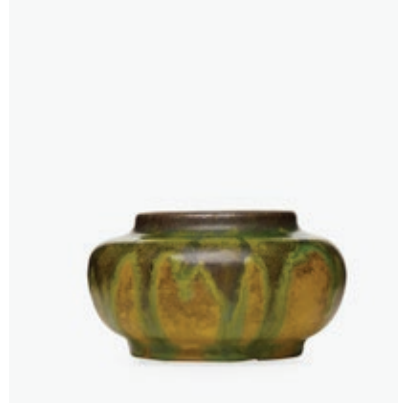
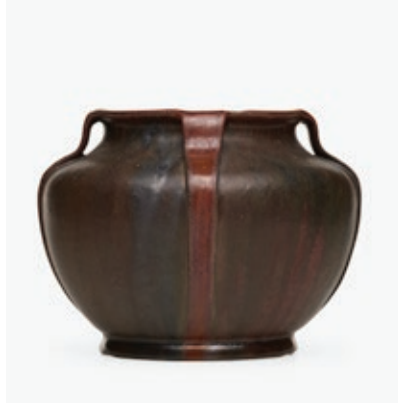
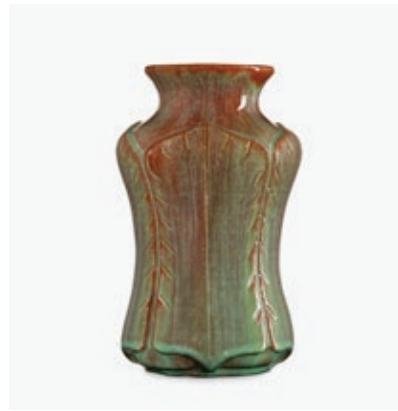
**ZARK POTTERY  
vases, set of two**

USA, 1907-10 | glazed earthenware  
7 h x 3 1/4 dia in (18 x 8 cm)  
These works feature butterflies and water lilies.  
Shorter vase measures: 4.75 dia x 4.5 h inches.  
Signed to underside of each 'Zark' and 'Ozark'.

\$1,000-1,500







428

**WILLIAM J. WALLEY**  
vase with leaves

USA, 1898–1919 | glazed earthenware  
6½ h × 3½ dia in (17 × 9 cm)  
Impressed signature to underside 'W.J.W.'

\$2,000–3,000

430

**WILLIAM J. WALLEY**  
buttressed vase

USA, 1898–1919 | glazed earthenware  
5¼ h × 6¾ dia in (13 × 17 cm)

\$1,000–1,500

429

**WILLIAM J. WALLEY**  
corseted vase with leaves

USA, 1898–1919 | glazed earthenware  
6½ h × 4 dia in (17 × 10 cm)

\$1,500–2,000

431

**WILLIAM J. WALLEY**  
cabinet vase

USA, 1898–1919 | glazed earthenware  
1¾ h × 3¼ dia in (4 × 8 cm)  
Impressed signature to underside 'W.J.W.'

\$750–1,000

432

**PAIRPOINT**  
Carlisle table lamp with macaw parrots

USA, c. 1920  
patinated metal, reverse-painted  
acid-etched glass  
22½ h × 18 dia in (57 × 46 cm)  
Stamped manufacturer's mark  
to underside of base 'Pairpoint D3070'  
with P in diamond touchmark.

\$1,500–2,000

433

**PAIRPOINT**  
Berkeley table lamp  
with Italian landscape scene

USA, c. 1920  
patinated metal, mahogany,  
reverse-painted acid-etched glass  
21½ h × 18 dia in (55 × 46 cm)  
Stamped manufacturer's mark to inner  
edge of shade 'The Pairpoint Corp'n'.  
Signed to inner edge of shade 'Ambero'.

\$1,200–1,800





434

**PAIRPOINT**  
**Carlisle table lamp with pastoral lake scene**

USA, c. 1920  
 patinated metal, reverse-painted  
 acid-etched glass  
 20½ h x 14½ dia in (52 x 37 cm)  
 Stamped manufacturer's mark to inner edge  
 of shade 'The Pairpoint Corp'n'. Signed to inner  
 edge of shade 'Ona M.'. Stamped manufacturer's  
 mark to underside of base 'Pairpoint D3025  
 Made in U.S.A.' with P in diamond touchmark.

\$1,000-1,500

435

**PAIRPOINT**  
**table lamp with European countryside scene**

USA, c. 1920  
 patinated metal, reverse-painted  
 acid-etched glass  
 19½ h x 15 dia in (50 x 38 cm)  
 Stamped signature to underside of base  
 'Pairpoint D2057' with manufacturer's  
 mark. Inside rim of shade signed 'G. Morley.'  
 and stamped 'The Pairpoint Cor'p'

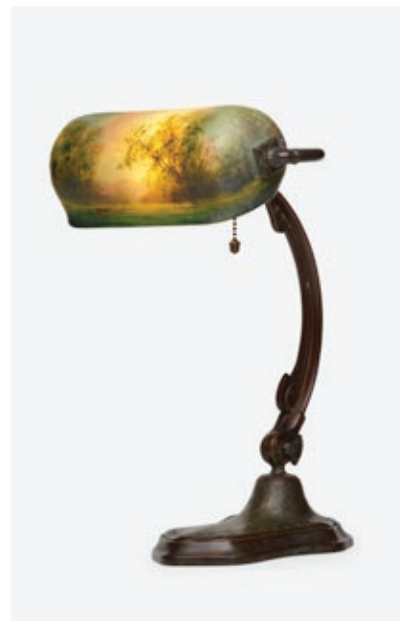
\$1,000-1,500

436

**HANDEL**  
**Summer Mountain desk lamp**

USA, c. 1922  
 patinated metal, obverse- and  
 reverse-painted acid-etched glass  
 14½ h x 10½ w x 9½ d in (37 x 27 x 24 cm)  
 Signed and numbered to inner edge of shade  
 'Handel 6936 C.K.'. Fabric manufacturer's  
 label to underside 'Handel Lamps'.

\$900-1,200



437

**HANDEL**  
**wooded landscape table lamp**

USA, 1914 | patinated metal, obverse- and  
 reverse-painted acid-etched glass  
 23 h x 18 dia in (58 x 46 cm)  
 Signed and numbered to inner edge of shade  
 'Handel 6209'. Stamped manufacturer's  
 mark to shade ring 'Handel Pat'd No. 979664'.  
 Stamped manufacturer's mark  
 to underside 'Handel'.

\$2,000-3,000

438

**HANDEL**  
**sunset landscape table lamp with lobed shade**

USA, 1917  
 patinated metal, reverse-painted  
 acid-etched glass  
 24 h x 18 dia in (61 x 46 cm)  
 Signed and numbered to inner edge of shade  
 'Handel 6534'. Stamped manufacturer's  
 mark to shade ring 'Handel Pat'd No. 979664'.  
 Fabric manufacturer's label  
 to underside of base 'Handel'.

\$2,000-3,000





439

**HANDEL**  
tropical palm overlay desk lamp

USA, c. 1915  
patinated metal, "red sunset" glass, slag glass  
18½ h × 10 w × 6¼ d in (47 × 25 × 16 cm)  
Impressed manufacturer's  
mark to side of base 'Handel'.

\$2,000–3,000

440

**HANDEL**  
wooded landscape table lamp, Japonesque base

USA, c. 1914  
patinated metal, reverse-painted  
acid-etched glass  
22½ h × 18 dia in (57 × 46 cm)  
Signed and numbered to inner edge of shade  
'Handel 6207'. Stamped manufacturer's  
mark to shade ring 'Handel Pat'd No. 979664'.

\$2,000–3,000

441

**QUEZAL**  
table lamp

USA, early 20th century  
patinated metal, hand-blown glass  
16 h × 10 dia in (41 × 25 cm)  
Base is in the style of Tiffany Studios  
and by an unidentified maker.  
Etched manufacturer's  
mark to each shade fitter 'Quezal'.

\$3,000–4,000







442

**QUEZAL**  
chandelier

USA, c. 1912 | patinated metal, blown glass  
22 h x 18 dia in (56 x 46 cm)  
Etched manufacturer's mark to fitters  
of three shades 'Quezal'.

\$1,000–1,500



443

**TIFFANY STUDIOS**  
rare fountain plate with dolphin

USA, early 20th century  
cast, patinated, and gilt bronze  
11½ h x 10½ w x 4½ d in (29 x 27 x 11 cm)  
Impressed manufacturer's mark and foundry  
mark to verso 'Tiffany Studios New York  
Roman Bronze Works'.

\$2,000–3,000



444

**LOUIS C. TIFFANY FURNACES, INC.**  
Art Deco box, model 350

USA, c. 1925  
acid-etched and gilt bronze, enamel, cedar  
2½ h x 6¼ w x 4 d in (6 x 16 x 10 cm)  
Impressed manufacturer's mark to underside  
'Favrile Louis C. Tiffany Furnaces, Inc. 350'  
with looping circular L cipher.

\$800–1,200

445

**TIFFANY STUDIOS**  
Moss Green Favrile Pottery vase  
with water lilies

USA, c. 1901 | glazed porcelain  
8½ h x 3½ dia in (22 x 9 cm)  
Incised signature and number to underside  
'LCT L.C. Tiffany Favrile Pottery P1177'.

\$7,000–9,000





446

**KALO  
necklace**

USA, early 20th century  
sterling silver, semi-precious stones  
Total length: 34". Necklace stamped 'Sterling'.

**\$1,000-1,500**

447

**KARL KIPP AND ROYCROFT  
assorted jewelry**

USA, early 20th century  
sterling silver, bronze, enameled 14 karat gold  
Lot is comprised of a rare pocket watch chain by Karl Kipp for Tookay Shop and eight Roycroft pins. Pocket watch chain stamped 'Sterling KK' with applied monogram 'H', measures 11.25". Orb and cross mark to recto of six pins, two largest stamped 'Roycroft Sterling', one stamped 'B, B & B Bronze'.

**\$1,000-1,500**

448

**ARCHIBALD KNOX FOR LIBERTY & CO.  
small Cymric bud vase**

England, 1903  
sterling silver, turquoise  
4 1/4 h x 3 w x 3 d in (11 x 8 x 8 cm)  
Impressed manufacturer's mark and touchmarks to underside 'L & Co. Cymric 2126'.

**\$1,500-2,000**



449

**OLIVER BAKER FOR LIBERTY & CO.,  
ATTRIBUTION  
rare Cymric hinged box**

England, 1900  
sterling silver, turquoise  
1 1/2 h x 5 1/4 w x 5 1/4 d in (4 x 13 x 13 cm)  
Impressed manufacturer's mark and touchmarks to underside 'L & Co.'.

**\$2,500-3,500**

450

**KALO  
demitasse set for twelve**

USA, early 20th century  
sterling silver, glazed and painted porcelain  
2 1/2 h x 3 1/4 w x 2 1/4 d in (6 x 8 x 6 cm)  
This lot is comprised of twelve demitasse cups with porcelain liners by Lenox (assembled, well-matched), twelve saucers, and twelve demitasse spoons. Kalo marks to each cup and saucer. Lenox marks to each liner. Applied monogram to cups and spoons 'B'.

**\$1,000-1,500**

451

**PORTER BLANCHARD  
AND JOHANNES SIGGAARD  
assembled demitasse set for six**

early 20th century | sterling silver, semi-precious stones, glazed and painted porcelain  
2 h x 2 3/4 w x 2 d in (5 x 7 x 5 cm)  
Set includes six cups with porcelain inserts by Lenox, six saucers, six spoons and one sugar spoon by Johannes Siggaard. Porter Blanchard marks to each cup and saucer. Lenox marks to each liner. Siggaard marks to each spoon.

**\$1,000-1,500**

452

**JOSEF HOFFMANN**  
**salon suite**

Austria | Jacob & Josef Kohn  
beech, upholstery  
30 h × 47 w × 22 d in (76 × 119 × 56 cm)  
Suite is comprised of two armchairs, four side  
chairs, one settee, and one table.  
Table measures: 26 dia × 29 h inches.  
Dining chairs measure: 16 w × 18 d × 30 h inches.  
Armchairs measure: 23,5 w × 22 d × 30 h inches.  
Branded manufacturer's mark to underside  
of each example except for table  
'J & J Kohn N Austria'.

\$5,000–7,000





453

**JOSEF HOFFMANN**  
**vanity, model 1134**

Austria, c. 1906 | Jacob & Josef Kohn  
stained beech, mirrored glass  
53¼ h × 23¼ w × 18 d in (135 × 59 × 46 cm)  
Vanity features one drawer. Paper  
manufacturer's label to underside of drawer  
'Jacob & Josef Kohn, Wien.'. This model was  
exhibited at the 1904 St. Louis Exposition.

**LITERATURE:** *Il Mobile Moderno:*  
*Gerbrüder Thonet Vienna, Jacob & Josef Kohn,*  
*Renzi, ppg. 192–93 Gebogenes Holz.*  
*Konstruktive Entwürfe. Wien 1840–1910,*  
*Asenbaum and Hummel, cat. no. 88*

**PROVENANCE:** Private Collection, New York  
\$1,500–2,000

454

**KOLOMAN MOSER, ATTRIBUTION**  
**wardrobe**

Austria, c. 1910 | Jacob & Josef Kohn  
stained beech, bronze, beveled mirrored glass  
83¼ h × 46 w × 21¼ d in (211 × 117 × 55 cm)  
Wardrobe features two doors concealing  
one shelf, three drawers, and a horizontal bar.

**PROVENANCE:** Private Collection, New York

\$3,000–5,000



455

**OTTO WAGNER**  
**table, model 8051C**

Austria, c. 1904 | Thonet  
stained and enameled beech  
and bentwood, mahogany, brass  
30½ h × 51½ w × 35¼ d in (77 × 131 × 90 cm)  
Paper manufacturer's label to underside  
of top 'Thonet Wien'.

**LITERATURE:** *Gebrüder Thonet*, manufacturer  
catalog, pg. 160 *Gebogenes Holz.*  
*Konstruktive Entwürfe. Wien 1840–1910.*  
Asenbaum and Hummel, ppg. 53–54

**PROVENANCE:** Private Collection, New York  
\$5,000–7,000

456

**KOLOMAN MOSER**  
**OR JOSEF HOFFMANN**  
**server, model 3120**

Austria, 1903/1904 | Jacob & Josef Kohn  
lacquered and stained beech,  
burlwood inlay, marble, brass  
65¼ h × 46½ w × 22½ d in (166 × 118 × 57 cm)  
Cabinet features one locking drawer above two  
shelves. Paper manufacturer's label to reverse  
'Jacob & Josef Kohn, Wien'. This model was  
exhibited at the 1904 St. Louis Exposition.

**LITERATURE:** *Il Mobile Moderno:*  
*Gebrüder Thonet Vienna,*  
*Jacob & Josef Kohn*, Renzi, pg. 112

**PROVENANCE:** Private Collection, New York  
\$7,000–9,000





457

**SUSI SINGER**  
female figurine

Austria, 1925–37 | Grünbach am Schneeberg  
glazed earthenware  
13 h x 3 w x 3 1/4 d in (33 x 8 x 8 cm)  
Impressed manufacturer's mark to underside  
'Grünbach Schneeberg SS Made in Austria'.

\$1,500–2,000



459

**THOMAS JUSTICE & SONS**  
Arts & Crafts mantel clock

England, early 20th century  
oak, carved oak, patinated hammered copper,  
patinated metal, enamel  
14 3/4 h x 14 w x 7 1/2 d in (37 x 36 x 19 cm)  
Inscribed "Maneo Nemini" or "I wait for no one."  
Metal manufacturer's label to verso.

\$1,000–1,500

458

**OTTO PRUTSCHER**  
wine glass

Austria, c. 1908–10 | Wiener Werkstätte  
blown, cut, and polished glass  
5 1/2 h x 2 1/4 dia in (14 x 6 cm)  
Sold with two other glasses by unknown  
designers, all manufactured by Meyer's Neffe  
for Wiener Werkstätte.

**LITERATURE:** *Wiener Werkstätte:  
Design in Vienna 1903–1932*,  
Brandstatter, ppg. 227–28

\$3,000–5,000

460

**PAVEL JANÁK**  
Rare Cubist tea service

Czechoslovakia, c. 1910 | Artel  
glazed earthenware  
7 1/2 h x 6 1/2 w x 4 d in (19 x 17 x 10 cm)  
Collection includes a teapot, creamer, sugar  
bowl, and set of six cups and saucers. Stamped  
number to undersides of teapot, creamer, and  
sugar bowl '742', '745', and '749.' Glazed initials  
to underside of all saucers and two tea cups  
'MZ'. Glazed number to underside of one saucer  
'10.XII.1918'.

**PROVENANCE:** Dorotheum, Prague,  
17 November 2001, Lot 340  
Private Collection, New York

\$7,000–9,000





461

**LOETZ**  
**Phänomen vase (Gre 2/315)**

Austria, c. 1902 | hand-blown glass  
4¾ h × 5 dia in (12 × 13 cm)  
Etched signature to underside 'Loetz Austria'.  
\$2,500–3,500

463

**LOETZ**  
**Phänomen vase (Gre 8065)**

Austria, c. 1900 | hand-blown glass  
7 h × 3 dia in (18 × 8 cm)  
Etched signature to underside 'Loetz Austria'.  
\$2,000–3,000

465

**LOETZ**  
**Phänomen candleholder (Gre 358)**

Austria, c. 1900 | hand-blown glass, brass  
7½ h × 4¼ dia in (19 × 11 cm)  
\$2,500–3,500

462

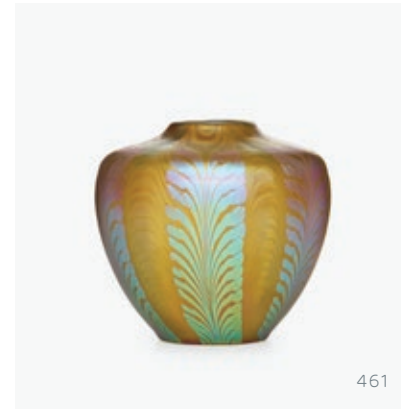
**LOETZ**  
**Phänomen vase (Gre 8058)**

Austria, c. 1899 | hand-blown glass  
10 h × 4½ dia in (25 × 11 cm)  
\$2,400–2,800

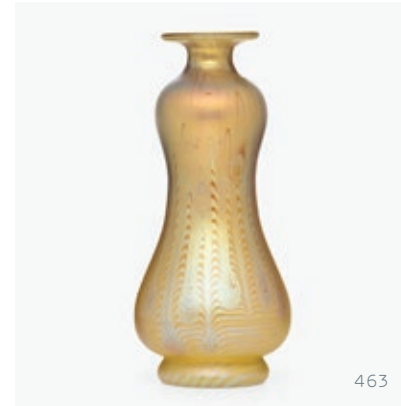
464

**LOETZ**  
**Phänomen vase (Gre 2/314)**

Austria, c. 1902 | hand-blown glass  
5 h × 2½ dia in (13 × 6 cm)  
Etched signature to underside 'Loetz Austria'.  
\$2,400–2,800



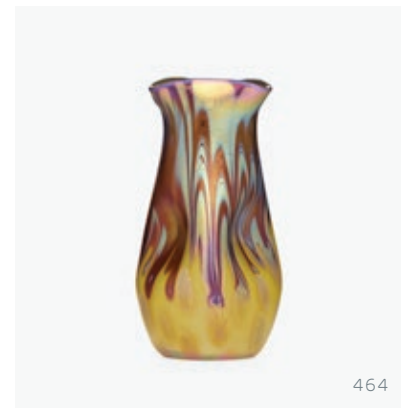
461



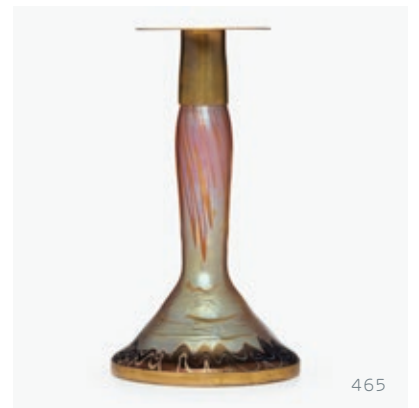
463



462



464



465

466

**LOETZ**  
**Phänomen vase (Gre 7501)**

Austria, c. 1898 | hand-blown glass  
9 h × 4¼ w in (23 × 11 cm)

\$1,000–2,000

468

**LOETZ**  
**Phänomen vase (Gre 85/3780)**

Austria, c. 1900 | hand-blown glass  
5¾ h × 5½ dia in (15 × 14 cm)  
Etched signature to underside 'Loetz Austria'.

\$800–1,200

470

**LOETZ**  
**Phänomen vase (Gre 1/78)**

Austria, c. 1901 | hand-blown glass  
6 h × 4½ w × 3½ d in (15 × 11 × 9 cm)  
Etched signature to underside 'Loetz Austria'.

\$2,000–3,000

467

**LOETZ**  
**Phänomen Argus vase (Gre 2/351)**

Austria, c. 1902 | hand-blown glass  
6 h × 5 dia in (15 × 13 cm)

\$800–1,200

469

**LOETZ**  
**Phänomen vase (Gre 1/154)**

Austria, c. 1901 | hand-blown glass  
4½ h × 4½ dia in (11 × 11 cm)

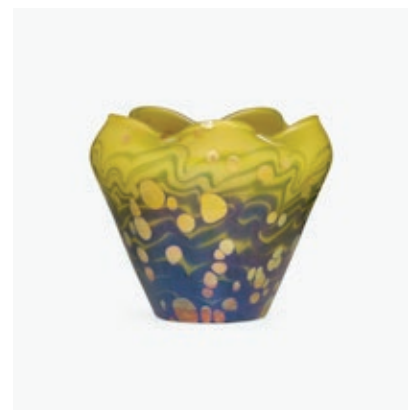
\$800–1,200

471

**LOETZ**  
**Cytisus vase**

Austria, c. 1902 | hand-blown glass  
4½ h × 5¼ dia in (11 × 13 cm)

\$1,500–2,000





472

**DAUM**  
**early vase with gentians**

France, late 19th century | acid-etched, enameled, and gilt cameo glass  
9½ h x 2¾ dia in (24 x 7 cm)  
Gilt signature to underside 'Daum Nancy' with Croix de Lorraine.

**PROVENANCE:** Private Collection, Somerset, NJ

\$3,000–5,000

473

**ART NOUVEAU**  
**sconce with maiden and stars**

France, early 20th century  
acid-etched and gilt cameo glass, partial martelé surface, patinated copper  
9¾ h x 6½ w x 3½ d in (25 x 17 x 9 cm)

**PROVENANCE:** Acquired from Macklowe Gallery in 2006 by the present owner

\$1,000–1,500

474

**PETER BEHRENS, ATTRIBUTION**  
**champagne glasses, set of eight**

c. 1900 | blown and etched glass  
7¼ h x 3 dia in (18 x 8 cm)

\$1,500–2,000





475

**ÉMILE GALLÉ**  
**Nicotiana table lamp**

France, c. 1900  
acid-etched cameo glass, bronze  
19¼ h x 8¼ dia in (49 x 21 cm)  
Signed in cameo on base and shade 'Gallé'.

\$3,000–4,000

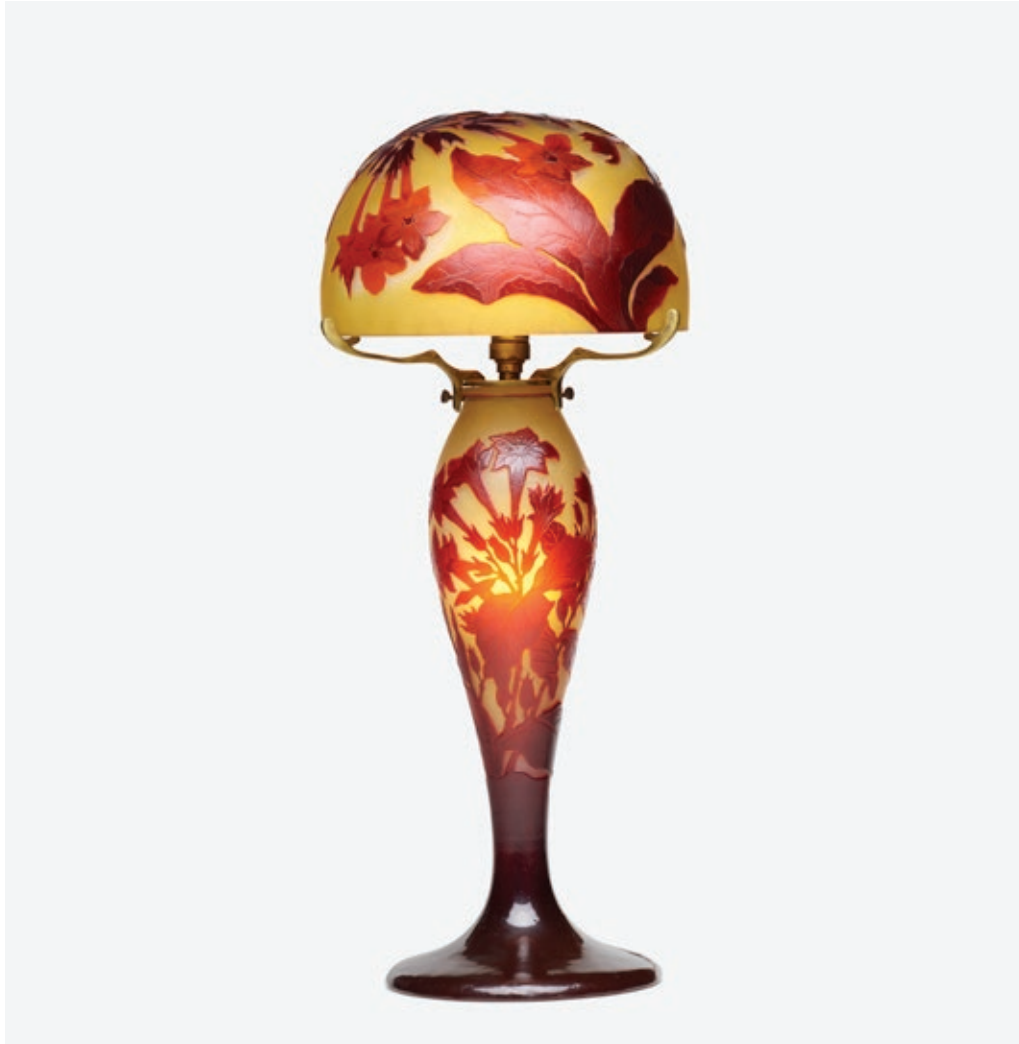
476

**ÉMILE GALLÉ**  
**pomegranate sconces, pair**

France, c. 1910 | acid-etched cameo glass,  
patinated bronze, enameled metal  
10 h x 11 w x 3 d in (25 x 28 x 8 cm)  
Paper manufacturer's label to back of one  
'Emile Gallé Nancy Paris'. Signature to each  
shade in cameo 'Gallé'.

**PROVENANCE:** Acquired from Macklowe Gallery  
in 2006 by the present owner

\$5,000–7,000





477

**JACQUES SICARD  
FOR WELLER POTTERY**  
vase with irises in relief

USA, 1903–17 | glazed earthenware  
12¾ h × 6¼ dia in (32 × 16 cm)  
Incised manufacturer's mark to underside '6'.  
\$2,500–3,500

478

**JACQUES SICARD  
FOR WELLER POTTERY**  
floor vase with poppies

USA, 1903–17 | glazed earthenware  
20½ h × 10½ dia in (52 × 27 cm)  
\$1,500–2,000

479

**JACQUES SICARD  
FOR WELLER POTTERY**  
massive floor vase with waves

USA, 1903–17 | glazed earthenware  
28 h × 14 dia in (71 × 36 cm)  
Glazed signature near base 'Weller Sicard'.  
\$5,000–7,000





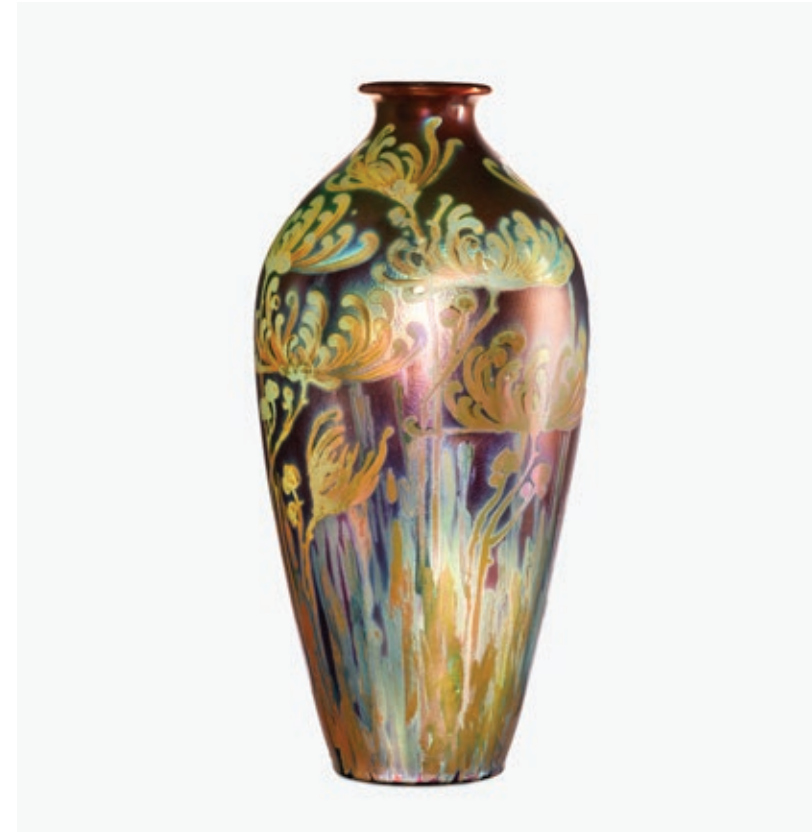
480  
**JACQUES SICARD  
FOR WELLER POTTERY**  
vase with peacock feathers in low relief  
USA, 1903–17 | glazed earthenware  
12 h × 4¾ dia in (30 × 12 cm)  
Glazed signature near base 'Sicard'.  
\$1,500–2,000

481  
**JACQUES SICARD  
FOR WELLER POTTERY**  
floor vase with chrysanthemums  
USA, 1903–17 | glazed earthenware  
20½ h × 10½ dia in (52 × 27 cm)  
Glazed signature near base 'Weller Sicard'.  
**LITERATURE:** Rago, "Quality Art Pottery from  
Zanesville, Ohio," *The Antique Trader Weekly*,  
8 October 1986, pg. 83 illustrates this example  
\$1,500–2,000

482  
**JACQUES SICARD  
FOR WELLER POTTERY**  
swirling vase with flowers  
USA, 1903–17 | glazed earthenware  
7¼ h × 6 dia in (18 × 15 cm)  
Glazed signature near base 'Weller Sicard'.  
\$1,000–1,500



483  
**JACQUES SICARD  
FOR WELLER POTTERY**  
large vase with chrysanthemums  
USA, 1903–17 | glazed earthenware  
18½ h × 8½ dia in (47 × 22 cm)  
Impressed manufacturer's mark  
to underside '203 X'.  
\$1,000–1,500





484

**EUGÈNE GAILLARD**  
chair

France, c. 1900 | carved fruitwood, upholstery  
37½ h × 16½ w × 15¾ d in (95 × 42 × 40 cm)

**LITERATURE:** *The Paris Salons 1895–1914*  
Volume III: Furniture, Duncan, pg. 215

**PROVENANCE:** Acquired from Macklowe Gallery  
in 2006 by the present owner

\$1,500–2,000



485

**EUGÈNE GAILLARD**  
desk

France, c. 1900 | pearwood, burl inlay, bronze  
30¼ h × 40 w × 23¾ d in (77 × 102 × 60 cm)  
Desk features two drawers.

**PROVENANCE:** Acquired from Macklowe Gallery  
in 2006 by the present owner

\$7,000–9,000





486

**ART NOUVEAU  
cabinet**

Italy, c. 1905  
carved and gilt mahogany,  
molded and leaded glass  
69½ h × 52¾ w × 20½ d in (177 × 134 × 52 cm)  
Cabinet features two doors  
concealing three shelves.

**PROVENANCE:** Private Collection, New York

\$4,000–6,000

487

**ART NOUVEAU  
occasional table**

France, c. 1935 | mahogany, mahogany inlay  
21 w × 21 d × 19½ h in (53 × 53 × 50 cm)

**PROVENANCE:** Acquired from Macklowe Gallery  
in 2006 by the present owner

\$1,000–1,500

488

**EUGÈNE GAILLARD  
settee**

France, c. 1911  
pearwood, Fortuny silk upholstery  
38½ h × 54 w × 21 d in (98 × 137 × 53 cm)

**LITERATURE:** *The Paris Salons 1895–1914*  
*Volume III: Furniture*, Duncan, pg. 216

**PROVENANCE:** Acquired from Macklowe Gallery  
in 2006 by the present owner

\$5,000–7,000



## TERMS OF SALE

This is a legal contract between you and Rago/Wright LLC. Rago/Wright LLC who does business as Rago, Rago Arts or Wright, offers each item of property (a **"lot"** or **"lots"**) for sale subject to these Terms of Sale, as changed or supplemented by provisions a) written in other places within these Terms of Sale, b) in written supplements to a catalogue or other materials prepared by us and c) as stated by the auctioneer or posted in writing at the auction, prior to a bid being accepted for a Lot (**"Agreement"**). By Registering to Bid, Bidding, or otherwise purchasing a Lot from Rago/Wright, you agree to be bound by these Terms.

In this Agreement, **"we," "us," "our," "Rago/Wright"** or similar terms mean Rago/Wright LLC and any of its agents, and **"you," "your," "buyer"** or similar terms mean the individual, corporation or other entity bidding on or buying a lot from us at auction, through the Internet or other means (with the foregoing parties, each a **"Party"** and together **"Parties"**). All other capitalized terms have the meanings given in Definitions. This Agreement contains mandatory arbitration dispute resolution at Section 52.

## BIDDING AT AUCTION

### 1. Registration

**Create Account** To Bid, you must create an account with us. [If you have not previously bid or consigned with Rago/Wright, or their predecessors R. Wright Inc., David Rago Auctions or 333 Auctions, LLC, you will need to first create an account with us following the instructions provided at our website.]

**Register to Bid** You also must register and receive a bidding number from us prior to bidding at an auction.

For certain auctions or lots, we may require you to confirm a minimum age.

### 2. Qualifying to Bid

**Verification of Your Identity** As a condition of bidding or participating in any auction or sale of one or more lots, we may require you to: (a) Establish credit and verify your creditworthiness by providing a valid credit card number, credit references, and an initial deposit, which may include a pre-authorization hold, of 10% of the low estimate of the lots on which you may bid; (b) Verify your identity, by providing us with a government issued photo identification and a valid credit card number; (c) Verify your address, by providing us with a valid government identification, a utility bill, bank statement and/or a recent postal envelope; (d) Verification of an age minimum, by providing us with identification; and (e) such other documents as we may request.

**Verification of Your Entity and Identity** (a) If you represent an entity, we may also require you to verify the status of your entity, as well as your entity's beneficial owners, by providing us with a list of that entity's shareholders, members, partners, a copy of your entity's charter and/or a good standing certificate; and the entity's shareholders agreement, operating agreement or partnership agreement; along with any of the above-described materials for any of your entity's

directors and officers; and (b) If you are bidding as agent, we may require you to provide a letter of authorization from your principal, as well as any of the documents or verifications listed above;

**Minimum Deposits** We may require first time and international bidders on lots with an estimate of \$5,000 or more to: (a) provide an initial deposit of 30% of the low estimate; and (b) grant us the right to charge your credit card 30% of the selling price on the date of the auction.

**Estimates** We may set estimated price ranges (low, mid and high) for a lot. A 'low estimate' is the lowest potential price in the range; the 'high estimate' is the highest potential price in the range; and the 'mid estimate' is the median between the two. Pre-sale estimates are intended as guides for prospective bidders. Estimates are preliminary only and are subject to revision by us from time to time in our sole discretion. We make no guarantees, representations or warranties of any kind, express or implied, including, without limitation, regarding the sale price of any lot, whether the lot will sell at all; the price realized at a post-auction sale, or price realized upon resale, which may be substantially different from our estimates.

### 3. Your Bid is an Offer

Any bid you submit can and may be the winning bid for a particular lot. Your Bid constitutes an offer to purchase the lot – if accepted by us, you become contractually bound to buy the lot in accordance with your last bid. A bid can be accepted by Rago/Wright (a) by our auctioneer as the last, highest bid in an auction; or by us an acceptable offer for a lot in a Private Sale (such accepted bid or offer, **"Winning Bid"**). If your last bid is the Winning Bid, you agree to pay us the amount of your bid and the Buyer's Premium for such lot and assume all risk of loss and damage to such lot, in addition to any obligations, costs and expenses relating to its handling, shipping, insurance, taxes and export as set forth herein.

### 4. Inspection

All sales are final. You are responsible for satisfying yourself as to condition or any other matter concerning each purchased lot. You are advised to personally examine any lot on which you intend to bid prior to the auction and/or sale.

### 5. Condition Reports and Descriptions

As a courtesy, condition reports for any lot are available from Rago/Wright prior to the sale, but Rago/Wright assumes no responsibility for errors and omissions contained in any such report, a Rago/Wright catalogue or other description of a lot that we may make available. Any statements made by Rago/Wright with respect to a lot whether in a condition report, a Rago/Wright catalogue or on the Rago/Wright website, orally or in writing, are intended as statements of opinion only, are not to be relied upon as statements of fact and do not constitute representations or warranties of any kind. Any description of a lot's dimensions and weights is approximate. Descriptions we make about lots may not describe all faults or restorations. No description or report about a lot is a substitute for your own examination of a lot.

## CONDUCT OF AUCTION

### 6. Auction

A lot will be sold to its highest bidder in an auction as determined in the sole and exclusive judgment of the auctioneer. We will determine the conduct of any auction, including, without limitation, whether, when and/or if to advance the bidding, to reject any bid offered, to withdraw any lot, to reoffer and resell any lot, and to resolve any dispute in connection with such sale. Our determination in management of an auction or sale is final and shall be binding upon you and all other participants in such sale

Note: In a tie between two or more Absentee Bids, the bid submitted earliest will be the Winning Bid. However, if an Absentee Bid is marked as a Plus Bid, then in a tie, we, on the absentee bidder's behalf, will automatically bid to the next highest bidding increment.

### 7. US Currency

All auctions will be conducted in the currency of the United States of America.

### 8. Bidding Increments

Bids at auction must be submitted in the following increments:

FROM	TO	INCREMENT
0	300	25
300	1000	50
1000	2000	100
2000	3000	200
3000	5000	250
5000	10000	500
10000	20000	1000
20000	32000	2000
32000	38000	3000
38000	42000	2000
42000	48000	3000
48000	50000	2000
50000	100000	5000
100000	200000	10000
200000	and up	20000

Nonconforming bids will not be executed, honored or accepted. However, we and our auctioneer will regulate the bidding and may change the bidding increments in our discretion. Increments over \$200,000.00 may be executed at the discretion of the auctioneer.

### 9. Reserve

We may offer each lot subject to a confidential minimum price below which we will not sell the Lot (the **"Reserve"**). The auctioneer may open the bidding on any lot below the Reserve by placing a Bid on behalf of the seller. We prohibit sellers from bidding on their own lots, but we may seek to satisfy the reserve by bidding on behalf of the consignor at the auction up to the reserve. We will indicate in the catalogue or by saleroom announcement or notice when parties with an interest in a Lot, for example a beneficiary of an estate, may bid on such Lot.

### 10. Absentee Bids

As a convenience to Qualified Buyers who cannot be present on the day of an auction, we will use reasonable efforts to execute absentee Bids submitted to us in accordance with this

Agreement. We assume no responsibility for a failure to execute any such Bid, or for errors or omissions made in connection with the execution of any such Bid.

**Written Absentee Bids** Absentee bids submitted by mail, overnight delivery, fax, email or a Rago/Wright bidding form on our website must be received by us at least two hours prior to the start of an auction's published start time. In addition to fulfilling any registration and qualification requirements under Section 2, all written bids must provide us with the lot name and number and your minimum and maximum bid amounts, as well as your name and contact information.

**Telephone Bids and Contingency Bids** Absentee bids submitted by phone must be received by us no later 30 minutes before a Lot goes on the block. Bids you submit to us by phone are placed at our discretion and at your risk. We provide phone bidding as a convenience to our customers, but while we will make every effort to execute your instructions, we cannot be held liable or responsible for any errors or any failure to bid. All calls will be recorded for record-keeping, quality assurance, and training purposes.

**Confirmation** We endeavor to send each absentee bidder a bid confirmation by 5:00 pm on the day prior to the auction. If you do not receive a bid confirmation, please call us. When you do receive a bid confirmation, you are solely responsible to check it for accuracy.

**Phone Line and Agent** We guarantee you a line and a phone agent for bidding provided we receive your request by fax, mail, phone, or online by 4:00 p.m. on the day prior to the auction. We can call you using up to two phone numbers ONLY during the auction. However, we do not have the capacity to assign phone agents to clients who want to listen only or who will not bid the minimum selling price. Therefore, if you request to reserve a phone agent for bidding, you must be willing to open bidding and bid to the low estimate subject to this Agreement.

### Contingency Bids and Plus Bids (a)

Contingency Bid. If you cannot be available by phone during the auction, you may mark your absentee bid with two or more bidding amounts (a **"Contingency Bid"**) 30 minutes or more before the auction's published start time. (b) Plus Bid If you cannot be available by phone during the auction, you may mark your bid as a **"Plus"** bid. A **"Plus Bid"** is a bid with your highest bid amount PLUS its next bidding increment that you direct us to make on your behalf if another bidder makes your highest absentee bid.

Late Bids and Late Bid Changes Changes to bid lists left with the auction house prior to the deadline will be accommodated as best we can, as will follow-up phone bids for those who attend, but must leave the auction and other exceptional cases.

**Absentee Bidding Conditions** (a) We will attempt to call you at up to two phone numbers you send to us. However, there can be no assurance that we will succeed in reaching you by phone or accurately placing your bids. (b) We endeavor to handle all absentee bids as your agent, based on your directions. We bid that auction's bidding increment above the previous bid up to your maximum bid amount. (See Section 8 "Bidding Increments"). In case of failure to comply, we will reduce each off-



Increment bid to the increment below it. (c) All absentee bidder names and bids are held in strictest confidence. (d) If you submit an absentee bid to us but then attend the auction in person, bid by phone or by any other means, it is solely your responsibility to cancel any or all absentee bids prior to the start of the auction. If you do not or cannot, regardless of reason, you will be held responsible for the purchase of any lot for which you have placed a Winning Bid.

Third-Party Internet Bidding Services (a) Third Party Bidding Platforms. We engage third party online bidding platforms to collect or facilitate auction bids ("Bidding Platforms"), each of which levy a fee for their services. Please proceed to these sites for all necessary information on fees and how to bid and buy online using these Bidding Platforms. UNDER NO CIRCUMSTANCES, INCLUDING, BUT NOT LIMITED TO, NEGLIGENCE, WILL WE AND OUR SELLERS BE LIABLE FOR ANY DAMAGES, LOST PROFITS OR ANY SPECIAL, INCIDENTAL, OR CONSEQUENTIAL DAMAGES THAT RESULT FROM THE USE OF, OR THE INABILITY TO USE, THESE BIDDING PLATFORMS. (b) Absentee bids left with third party online bidding platforms are released to Rago/Wright when a lot comes up for sale. Such bids are considered received by us at the time they are released to us by the Bidding Platforms. (c) If you submit an absentee bid to us through a Bidding Platform and also attend the auction in person, bid by phone or by any other means, it is solely your responsibility to cancel any or all of your submitted bids prior to the start of the auction. If you do not or cannot, regardless of reason, you will be held responsible for the purchase of any lot for which you have placed a successful bid. (d) You acknowledge that there may be additional terms and conditions governing the use of any Bidding Platform in connection with bidding on the Internet, including, but not limited to, those providing for additional charges and fees relating to the execution of such Bids. Rago/Wright has no control over, and assumes no responsibility for, the content, privacy policies, or practices of any Bidding Platforms. You expressly release Rago/Wright from any and all liability arising from your use of any third-party website or services. Additionally, your dealings with such third-party sites, including payment and delivery of goods, and any other terms (such as warranties) are solely between you and such Bidding Platforms. We encourage you to be aware of, and to read, the terms and conditions and privacy policy of any Bidding Platforms that you visit.

#### 11. Auction Results

Preliminary auction results will be available online shortly after each auction at the website of the hosting house; wright20.com or ragoarts.com. Final auction results will be available online once we have audited and verified all sales/bids.

#### 12. The Record of the Sale

Rago/Wright's records of sale will constitute the factual, accurate record of all transactions you participate in under this Agreement for purposes of any disputes. If there is a discrepancy between our records and any other records or messages related to a sale or transaction in a lot, our records of sale will govern.

#### 13. Withdrawal

We may withdraw a lot from auction for any reason and with no liability whatsoever for such withdrawal.

#### PAYMENT

#### 14. Invoicing

All successful bidders will be sent invoices by e-mail or mail (if we do not have an email address on file) within two business days following an auction.

If you are successful and do not remit payment as specified, the amount owed will be charged to your credit card together with such charges as set forth in this Agreement.

#### 15. Payment for and Collection of Purchases

You Pay Buyer Costs If your bid is a Winning Bid (or you agree to pay the purchase price for a lot as a part of a Private Sale), you agree to pay the following charges associated with the purchase of such lot: (a) Hammer Price; (b) Buyer's Premium for each lot sold at auction of: (i) 25% of the Hammer Price (or part thereof) up to and including \$250,000; (ii) 20% of the Hammer Price (or part thereof) in excess of \$250,000 up to and including \$3,000,000; and (iii) 12% of the Hammer Price (or part thereof) in excess of \$3,000,000. (c) Any applicable sales tax, late payment charges, storage fees, credit card fees, Enforcement Costs, Bidding Platform fees and charges and other costs, damages or charges assessed in accordance with these Terms (collectively, the "Buyer Costs", and together with the Hammer Price and Buyer's Premium, "All Charges").

Payment Procedure You will pay All Charges immediately following Rago/Wright's acceptance of the Winning Bid unless other arrangements have been approved by Rago/Wright in advance. If Rago/Wright approves of such other arrangement for payment, Rago/Wright may at its discretion require you to make a nonrefundable down payment on All Charges. All payments must be made in US Dollars, in any of the following acceptable forms of payment: (a) Cash; (b) Check, with acceptable identification; (c) Visa, MasterCard, Discover or American Express; (d) PayPal

Payment Processor Charges We may charge and collect an additional 2% of payments made by credit card or via PayPal or other third party processor.

Late Payment If payment is not received in full within fifteen (15) days of its due date hereunder, we may charge, and you will pay, interest on the outstanding amount at a rate of 1.5% per month.

#### 16. Enforcement Costs

You will reimburse us for the amount of all expenses we incur, including attorneys' fees and court costs, in exercising or enforcing any of our rights hereunder or under applicable law, together with interest on all such amounts at 1.5% per month (the "Enforcement Costs") within fifteen (15) days of your receipt of our invoice for such Enforcement Costs.

#### SALES TAX

#### 17. New Jersey and Illinois

All purchases picked up at or delivered to a New Jersey address will be taxed at the New Jersey state tax rate, currently 6.625%. All purchases picked up at or delivered to an Illinois address will be taxed at the Illinois tax rate, currently 6.25%. All purchases will also be subject to applicable city and county taxes.

#### 18. Nexus

On June 21, 2018, the U.S. Supreme Court decided South Dakota v. Wayfair, Inc., enabling states to impose sales tax responsibilities on "remote" sellers, i.e., sellers without a physical presence in the state. Since the ruling, several states have responded by implementing legislation requiring remote sellers to collect sales tax when the total dollar value of purchases sent to that state exceeds a set threshold. Each state sets its own threshold. Exceeding that threshold is known as creating an economic nexus. Like all other remote sellers, Rago is now required to collect Sales / Use Tax from buyers in these states when the total dollar value of purchases sent to that state creates a nexus. When this occurs, you will see sales tax included on your invoice. The sales tax rate is determined by the State, County, and City where purchases are sent.

#### 19. Resale Certificate

If you have a valid resale certificate on file with us, you will be exempted from being charged the Sales/ Use tax. Please send your completed, valid Resale Certificates to: clientaccounts@wright20.com.

#### 20. Warning

If we have not achieved nexus with your particular state, it is still your responsibility to pay the proper use tax on your purchases.

#### PICK-UP AND STORAGE

#### 21. Pick-up and Removal

You must remove each lot you are obligated to purchase from Rago/Wright (sometimes referred to as, "Purchased Lot") from our premises no later than fourteen (14) days after the date of the auction (or date of Private Sale if applicable) (the "Sale Date"). You are solely responsible for removal of your Purchased Lot from Rago/Wright facilities and all costs associated with packing, insurance, shipment and delivery of your Purchased Lot to your designated destination.

#### 22. Procedures for Pick-up and Removal

Times and Days You may pick up a lot from our facilities during our normal business hours, if you provide us at least 24 hours notice to arrange pick-up. Our facilities are open Monday – Friday, from 9:00 a.m. to 5:00 p.m., but closed on government holidays and any Monday following weekend sales. You must supply and bring your own packing materials. Weekend pick-ups may be made by special arrangement and by appointment only.

Shippers If you choose to ship a Lot from our facility, you are solely responsible for the shipment. We will, at your written direction, release your Purchased Lot to a third-party shipper to pack and ship it. We will work with any shipper of your choosing. Please make sure your shipper carries insurance. We are not responsible for any damage or loss that occurs while your objects are in another's custody or care. If you choose a shipping method that we have advised against, we may require a waiver from you acknowledging this. For the avoidance of doubt, we will not be responsible for any damage or loss that occurs to a Lot once we release it to a third-party shipper.

Referred Shippers We may, as a courtesy to you and solely at our discretion and your risk, provide or arrange packing, shipping or similar logistical services, or refer you to third parties who specialize in these services. Any such services referred, provided or arranged by us are at your sole risk and expense; we assume no responsibility for any act or omission of any party in connection with any such service or reference, and we make no representations or warranties regarding such parties or their services. You expressly release Rago/Wright from any and all liability arising from your use of any third-party website or services.

International Shipments. All international customs, duties, and other tariffs are your responsibility. We and all third-party shippers will declare the Hammer Price plus the Buyer's Premium as the value of a lot in all cases.

Oversized Lots. Oversized Lots are objects such as furniture, andirons, floor vases, or any other item whose safe packing will exceed the limits of common carriers. The delivery of oversized, large, heavy, or expensive objects is not an inexpensive proposition and we urge you to consider this before bidding.

#### 23. Deadlines for Pick-up, Storage, Abandonment

As stated above, you must retrieve your Purchased Lots from Rago/Wright's facilities within 14 days of the Sale Date. If you fail to retrieve your purchased lot within thirty (30) days after the Sale Date (such 30-day period, the "Retrieval Period"), we may, without further notice to you, (a) deliver the purchased lot to you at your expense (and invoice you as Buyer Costs); or (b) sell such Purchased Lot at auction without Reserve at a place and time we determine in our sole discretion; or (c) continue to store your Purchased Lot on our, or a third-party's premises and charge you a storage fee of \$10 per day per lot ("Storage Fee"). You will pay all such Storage Fees and other fees and charges.

#### 24. Consequences of Late Pick-up or Abandoned Property

Notwithstanding the foregoing, Rago/Wright has no duty to store any lot indefinitely. Any Purchased Lot that is still in our possession sixty (60) days after the end of the Retrieval Period (i.e. 90 days after the Sale Date) will be deemed abandoned by you and title to it, to the extent it has passed to you, will pass to us (such abandoned property, "Abandoned Property"). You authorize Rago/Wright to discard or sell any Abandoned Property and to keep any proceeds from the sale of Abandoned Property. You hereby release Rago/Wright of and from any claims related

to such Abandoned Property (including without limitation claims for purchase price refunds, possession of such lot or other damages or losses). You acknowledge and agree that Rago/Wright is not responsible for damage or loss that occurs to Abandoned Property and that Rago/Wright is not responsible for insuring Abandoned Property after the Retrieval Period.

**Reasonable** You agree that this remedy is reasonable in light of the costs Rago/Wright would have to incur to continue to store and process purchased Lots after sale.

## 25. Full Payment

You will not be permitted to claim or take possession of any lot until all Buyer Costs you owe to us have been paid in full. We may use any money you pay us to pay Buyer Costs.

## 26. Export, Import, Endangered Species Licenses and Permits

An export or import license may be required for the export or import of your Purchased Lot. It is your sole responsibility to familiarize yourself with International, U.S. Federal and State laws or requirements regarding the necessary export, import, or other permit required prior to bidding at auction. In addition, countries prohibit the import of property made of or incorporating plant or animal material, such as coral, crocodile, ivory, whalebone, Brazilian rosewood, rhinoceros' horn or tortoiseshell, irrespective of age, percentage or value. We make no representations or warranties as to whether any Lot is or is not subject to export or import restrictions or any embargoes and will have no responsibility with regard to these matters. Before bidding for any lot, you represent, warrant and covenant that you have made your own inquiries as to whether a license is required to export a lot from the United States or to import it into another country. It is solely your responsibility to comply with these laws and to obtain any necessary export, import and endangered species licenses or permits. Failure to obtain a license or permit or delay in so doing will not justify the cancellation of the sale or any delay in making full payment for the lot. We will not rescind the sale of a Lot that is transferred to you and later seized by government authorities due to the presence of endangered species material. As a courtesy to clients, we may advise people who inquire about lots containing potentially regulated plant or animal material, but we do not accept liability for errors or for failing to advise on lots containing protected or regulated species.

## TITLE AND RISK OF LOSS

### 27. Title

Title to a Purchased Lot will not pass to you (or the third-party buyer if applicable) until Rago/Wright has received All Costs of a lot.

### 28. Risk of Loss

Notwithstanding passage of title, risk of loss to your Purchased Lot passes immediately to you: (a) when you or your agent or a shipper pick-up and take possession of it; or (b) on the thirty-first (31st) day after the Sale Date (whichever occurs first). We are not responsible for any

damage or loss that occurs to the Lot past such dates. Further, if for any reason, you return your Purchased Lot back to us, risk of loss remains with you until Your Purchased Lot is delivered to us at our door.

**Exceptions** Under no circumstances will Rago/Wright or its insurers be liable for damage caused by changes in humidity or temperature, conditions or defects inherent to the lot, normal wear and tear, war or acts of terrorism. Payments for loss are limited by Section 28.2 (Loss Payment Amounts and Limits).

**Loss Payment** Amounts and Limits. You acknowledge and agree that your sole and exclusive remedy for and with respect to any loss or damage to your Purchased Lot for which Rago/Wright is liable pursuant to this Agreement will be receipt of the amounts prescribed in this Section 28.2. Accordingly, for any loss or damage to your Purchased Lot for which you have paid All Costs and we bear the risk of loss at the time of the event causing the loss, you will be entitled to the following: (a) Total Loss. The lot's Hammer Price and Buyer's Premium if it suffers a Total Loss. (b) Partial Loss. For a lot that suffers a Partial Loss: (i) if you choose to refrain from repairing or restoring the lot, we will pay either (at our election) (A) the amount of depreciation in value from the Hammer Price as a result of the loss (and you will keep title to the lot); or (B) the lot's Hammer Price and Buyer's Premium (but we or our insurer will take title to the lot); (ii) if you choose to repair or restore the lot, we will bear the costs to repair or restore the lot, approved by us and our insurer in advance (and you will retain title to the lot).

## REMEDIES

### 29. Security

As security for full payment to us of all amounts due from you and prompt collection of your Purchased Lots in accordance with these Terms, we retain, and you grant to us, a security interest in any Lot purchased by you in accordance with these Terms (and any proceeds thereof), and in any other property or money of the buyer in our possession or coming into our possession subsequently ("Security Interest"). We may apply any such money or treat any such property in any manner permitted under the Uniform Commercial Code and/or any other applicable law. You hereby grant us the right to prepare and file any documents to protect and confirm our Security Interest including but not limited to a UCC-1 Financing Statement.

### 30. Breach

If a buyer fails to make timely payment as required in these Terms, or breaches any other covenant, representation or warranty in this Agreement, we may, in our discretion, exercise any remedies legally available to us, including, but not limited to, the following: (a) cancel the sale of the lot and any other sale of a lot to you; (b) resell the lot with or without reserve; (c) retain all amounts you previously paid to us, which will constitute a processing and restocking fee (which you acknowledge would be reasonable in light of the costs we would have to incur to process your breach and attempt to re-auction or resell the lot); (d) reject any bids by you at future auctions; (e) set-off

any amounts owed by Rago/Wright to you in satisfaction of unpaid amounts; and/or (f) take any other action we deem necessary or appropriate under the circumstances.

## 31. Confreeion of Judgment

If you default on payment of one or more Winning Bids under this Agreement, you hereby authorize any attorney to appear in a court of record and confess judgment against you in favor of Rago/Wright for the payment of All Charges on those Winning Bids. Accordingly, the confession of judgment may be without process and for any amount due on this Note including collection costs and reasonable attorneys' fees. This authorization is in addition to all other remedies available to Rago/Wright.

## 32. Recession/Voiding of Sale by Rago/Wright

If we become aware of a third party's adverse claim relating to a lot purchased by you, we may, in our discretion, rescind the sale. Upon notice of our election to rescind a sale, you will promptly return such Lot to us, at which time we will refund to you the Hammer Price and Buyer's Premium you paid to us for such Lot. This refund will represent your sole remedy against us and/or the seller in case of a rescission of sale under this paragraph, and you agree to waive all other remedies at law or equity with respect to the same. If you do not return such Lot to us in accordance with this paragraph, you agree to indemnify, defend and hold Rago/Wright, its officers, directors, employees, agents and their successors and assigns, harmless from any damages, costs, liabilities or other losses (including attorney's fees) arising as a result of such third party claim.

## 33. AML

Rago/Wright is committed to detect and deter money laundering, to protect our consignors from failed transactions and to promote ethics and fairness in our transactions and those generally in the world or art and design. Accordingly, Rago/Wright may, at our discretion, refuse your participation in our sales, auctions or activities; cancel your registration with Rago/Wright; cancel or refuse to accept your bid for lots at any time prior to, during or even after the close of the sale; and require documentation and information to verify your identity or the identity of the officers, directors or beneficial owners of the entity you represent.

## 34. Privacy and Security

We will hold and process your personal information for use as described in, and in line with, our privacy policy at <https://www.ragoarts.com/privacy-policy>. All payments information relating to the sale is collected and processed directly by third-party payment processors, and not by Rago/Wright.

## SPECIAL PROPERTY

### 35. Firearms

We only sell antique firearms as defined by the U.S. Bureau of Alcohol, Tobacco and Firearms. Due to state firearms regulations, all handguns, pistols, and revolvers will only be shipped via Federal Express and will only

be delivered to a person who holds a Federal Firearms License or a Curios and Relics License. Handguns, pistols, and revolvers can only be picked up at our facilities by a person who holds a Federal Firearms License, or the proper handgun permits of the state where the handgun is sold, which must be shown and logged. There are no exceptions. No firearms will be sold or shipped internationally. It is your sole responsibility to familiarize yourself with your local laws and requirements for the possession of firearms; to identify and obtain any necessary license or permit prior to bidding; and to abide by all Federal, State and local laws and requirements. Neither Rago/Wright nor the seller makes any representations or warranties as to whether any lot is or is not subject to these regulations and will have no responsibility with regard to these matters.

## 36. Jewelry

For centuries, natural gemstones have been enhanced in a variety of ways, including heating, oiling and other methods. These treatments are accepted by the international jewelry and gemstone trade. We make no representations or warranties, express or implied, as to whether natural stones have been treated or enhanced, whether specifically referenced or not. All stones have been identified by standard gemological field tests, as the mounting allows, and we will make available to prospective buyers any gemological certificates in our possession. However, it will not always be feasible to obtain a qualified lab report on every stone we offer for sale. If you wish to have a grading or gemological report from an independent recognized laboratory such as the Gemological Institute of America, the European Gemological Laboratories or the American Gemological Institute, you may request one at your own expense or hire an independent adviser of your choosing at your expense. Weights given for stones we offer for sale are based solely on measurements and known gemological formulae; they are approximate, not exact. Weight may differ once a stone is removed from its setting. You are advised to verify weight estimates prior to bidding at auction.

**Coins and Currency** All coins and currency are sold "as is" by us, except as to authenticity. You acknowledge and agree that grading is not an exact science, but a matter of opinion as to condition and other attributes; and that grading can and will differ among third party grading services (even though consensus grading is employed by most), independent experts, dealers, collectors and auction houses, including our own. Opinion as to the grading, condition or other attributes of any Lots may have a material effect on value. Coins and currency are sold without any additional express or implied warranty, including, but not limited to, (a) grade; (b) referencing the opinion of a third-party grading service; (c) with no reference to the opinion of a third-party grading service; (d) with reference to our opinion as to grading; (e) subsequently submitted to a third-party grading service for determination or certification; (f) encapsulated and therefore unable to be physically examined.

We reserve the right to differ with the grades assigned to any Lot, by certificate or otherwise, regardless of the grading service, and will not be bound by any prior or subsequent opinion, determination or certification by third-party

grading services including, but not limited to, National Guaranty Company (NGC), Professional Coin Grading Service (PCGS), Paper Money Guaranty (PMG) and Currency Grading and Authentication (CGA) or any other any grading service, third party organization or dealer. There is no guarantee or warranty implied or expressed that the grading standards we use will meet the standards of any grading service at any time in the future. We have graded uncertified coins and currency with reference to the current interpretation of the American Numismatic Association's standards at the time of grading.

We may re-grade any Lot re-consigned for any reasons, including, but not limited to a change of grading standards, differences in opinion, mishandling over time.

We will not be liable for any patent or latent defect or controversy pertaining to or arising from any encapsulated coins or currency. In any such instance, your remedy, if any, shall be solely against the service certifying and you hereby agree that you will have no remedy against us.

Please note that certain types of plastic may react with a coin's metal or transfer plasticizer to notes, causing damage. Avoid storage in materials that are not inert.

## WARRANTY

### 37. Limited Warranty

For each lot, the seller has represented and warranted to us that the seller is the owner of such lot or is acting as authorized agent of the owner of the lot and has the right to transfer title to the lot free of all liens, claims, and encumbrances.

### 38. As is, Where is

Except as expressly stated herein, each lot is sold "as is" "where is", with no representation or warranty of any kind from any party (including Rago/Wright or the seller of the lot), express or implied, including warranties of merchantability, fitness for a particular purpose and non-infringement.

### 39. Special Warranty in Select Lots

**(WRIGHT) Authorship Warranty** Subject to the following terms and conditions, Rago/Wright warrants, for a period of two (2) years after the Sale Date, that a lot's Authorship description is true and correct as presented in a Rago/Wright Catalogue. "Authorship" means the creator, designer, culture or source of origin of a lot that is specifically identified in BOLD and CAPITAL type in the lot's current Rago/Wright Catalogue, but not including supplemental text or information included in any other descriptions (whether or not in the Rago/Wright catalogue).

**(RAGO) Authenticity Guarantee** The consignor warrants, for a period four (4) years after the Sale Date, that a lot is authentic and conforms to the authorship described in the catalogue for the lot (the "Authenticity Guarantee"). We are not personally liable for the Authenticity Guarantee.

### 40. Exclusions and Conditions

Notwithstanding the foregoing, each warranty of any kind or nature on any lot sold by Rago/Wright will be subject to the following conditions:

All warranties specifically exclude: (a) Any lot description that states there is a conflict of specialist opinion. (b) Any typographical errors in lot descriptions or catalogue. (c) Wear on furniture, flakes, surface scratches, or manufacturing flaws in glass or ceramic lots. (d) Any lot for which, at the time of sale, the statements regarding [Authorship/Authenticity] made by Rago/Wright conform to the generally accepted opinion of scholars, specialists or other experts, despite subsequent discovery of information that modifies such generally accepted opinions. (e) The description of clocks and lighting devices, whether in the catalogue or a condition report, as such descriptions may be incomplete and not identify every mechanical replacement, repair, or defect. The absence of reference to the condition of a clock or lighting device does not imply it to be in working condition or without defects, repairs, restorations, or replacement parts. No warranty is made that any watch is in working condition or without defects, restorations, or working parts. Buyers are advised to check watch works prior to auction. (f) The description of jewelry, whether in the catalogue or a condition report, is rendered as opinion and not a representation of fact, including, but not limited to, specialist opinion as to authenticity, the enhancement or treatment of gemstones, the weight of gemstones, the country of origin, the authorship or origin (manufacture) of an item, its period or the authenticity of its marks.

**Conditions to [Authorization/Authenticity Guarantee].** Notwithstanding, this warranty is subject to the following: (a) The benefits of this warranty are only available to the original buyer of a Lot from Rago/Wright, and not to any subsequent purchasers, transferees, successors, heirs, beneficiaries or assigns of the original buyer. (b) Neither the consignor nor we make any warranty or representation, express or implied, as to whether you will acquire any reproduction rights, copyrights or other intellectual property rights in, or with respect to any Lot.

### 41. How to Make a Special Warranty Claim

To make a claim under a Special Warranty, you must submit, at your expense, written notice of your claim under a Special Warranty a written opinion of at least two (2) experts whose principal line of business is the appraisal and authentication of art, antiquities, design objects or other valuable objects similar to the lot), within thirty (30) days after you become aware of the existence of such a claim, and in any event no later than two (2) years following the Sale Date. If the lot is judged inauthentic by the 2 experts, prior to receiving a refund of any amount of the Hammer Price and Buyer's Premium paid by you to us, the lot must be returned to us in the same condition as at the Sale Date.

### 42. Remedies

Remedies for Breach of [Authorization/Authenticity Guarantee].

Your sole remedy, and our sole liability, for violation of any warranty under this Agreement of any kind or nature is cancellation of the sale of the lot and the refund of the Hammer Price and Buyer's Premium you paid to us for it. Refunds provided under the [Authenticity Guarantee] shall not include packing, shipping, late fees, taxes, shipping, storage or insurance expenses or other amounts incurred or paid by you. You hereby waive any and all other remedies at law or equity with respect to breaches of this warranty.

### 43. Limit of Liability

IN NO EVENT SHALL RAGO/WRIGHT BE LIABLE TO YOU OR ANY THIRD PARTY FOR ANY CONSEQUENTIAL, EXEMPLARY, INDIRECT, SPECIAL, PUNITIVE, INCIDENTAL OR SIMILAR DAMAGES, WHETHER FORESEEABLE OR UNFORESEEABLE, REGARDLESS OF THE CAUSE OF ACTION ON WHICH THEY ARE BASED, EVEN IF ADVISED OF THE POSSIBILITY OF SUCH DAMAGES OCCURRING. WITH RESPECT TO ANY SALE OF A LOT, IN NO EVENT SHALL RAGO/WRIGHT BE LIABLE TO YOU OR ANY THIRD PARTY FOR LOSSES IN EXCESS OF THE PURCHASE PRICE PAID BY YOU TO RAGO/WRIGHT FOR SUCH LOT TO WHICH THE CLAIM RELATES. We are not liable for any breach or default by the consignor or seller of a Lot or in relation to any terms which are implied into contracts by law and which are the responsibility of the seller of an item.

### 44. Indemnity; Limit of Liability; Liability

You agree to indemnify, defend and hold Rago/Wright, its officers, directors, employees, agents and their successors and assigns, and each buyer, harmless from and against any and all claims, actions, damages, losses, liabilities and expenses (including reasonable attorneys' fees and costs) relating to the breach, or alleged breach, of any of your agreements, covenants, representations or warranties contained in this Agreement.

### 45. Resession/Voiding of Sale by Rago/Wright

If we become aware of an adverse claim of a third party relating to a lot purchased by you, we may, in our discretion, rescind the sale. Upon notice of our election to rescind a sale, you will promptly return such lot to us, at which time we will refund to you the Hammer Price and Buyer's Premium paid to us by you for such lot. This refund will represent your sole remedy against us and/or the seller in case of a rescission of sale under this paragraph, and you agree to waive all other remedies at law or equity with respect to the same. If you do not return such lot to us in accordance with this paragraph, you agree to indemnify, defend and hold Rago/Wright, its officers, directors, employees, agents and their successors and assigns, harmless from any damages, costs, liabilities or other losses (including attorney's fees) arising as a result of such third party claim. In addition to the other rights of cancellation contained in this agreement, we can cancel a sale of a lot if we reasonably believe that completing the transaction is or may be unlawful or that the sale places us or the seller under any liability to anyone else or may damage our reputation.

### 46. Intellectual Property

Rago/Wright and our licensors will retain ownership of our intellectual property rights, including, without limitation, copyright to all photographs or other images of the lot created by us (including in your Purchased Lots), as well as rights to the copyrights and trademarks and other images, logos, text, graphics, icons, audio clips, video clips, digital downloads in, and the 'look and feel' of, the Rago/Wright website and each Rago/Wright catalogue. You may not obtain any rights of ownership, use, reproduction or any other therein by virtue of this Agreement. You may not use any of our trademarks or service marks in any way.

### BUYER'S REPRESENTATIONS AND WARRANTIES

You hereby represent, warrant and covenant:

### 47. Legal Status

If you are acting as an agent for someone who is not signing this Agreement, you and the principal are jointly and severally subject to the terms and conditions hereunder, to the same extent as though you were acting as principal.

### 48. Information

All information you have provided or will provide to Rago/Wright about yourself, your business, your identity and your funds will be totally and completely accurate, truthful and complete.

### 49. Legal

The purchase of any lot is not being done for illegal purposes. Your funds are not or will not be linked to any criminal activity, tax fraud, money laundering or terrorist activities; neither you nor principal or beneficiary you represent is being investigated for, or has been charged or convicted of, any criminal activity, tax fraud, money laundering or terrorist activities.

### 50. Notify Us

You will notify us promptly in writing of any events or circumstances that may cause your representations and warranties to be inaccurate or breached in any way.

## DISPUTES AND GOVERNING LAW

### 51. Governing Law

This Agreement and all rights and obligations relating to it will be governed by the laws of the State of New Jersey and specifically excluding conflict of laws principles and the UN Convention on Contracts for the International Sale of Goods.

### 52. Dispute Resolution

Any dispute, controversy or claim arising out of, relating to, or in connection with this Agreement, or the breach, termination, or validity thereof ("Dispute"), will be resolved, to the extent possible, within thirty (30) days through discussions held in good faith between appropriate representatives of the Parties. If the controversy or claim has not been resolved within the initial 30-day discussion period, then the chief executive officers of each Party will engage in good faith discussions



for a period of fifteen (15) days beginning immediately after the initial 30-day discussion period. If the controversy or claim has not been resolved after the aforementioned discussion periods in aggregate duration of forty-five (45) days, either party may refer the controversy or claim or claim to American Arbitration Association under its Commercial Mediation Procedures, for mediation in NEWARK, NEW JERSEY for a period of sixty (60) days. However, if the Dispute is not settled by mediation within the 60-day period, the Dispute will be settled by arbitration administered by the American Arbitration Association in accordance with its Commercial Arbitration Rules and judgment on the award rendered by the arbitrator(s) may be entered in any court having jurisdiction thereof. Claims will be heard by a single arbitrator, unless the claim amount exceeds \$250,000, in which case the dispute will be heard by a panel of three arbitrators. The place of arbitration will be NEWARK, NEW JERSEY. The arbitration and any proceedings conducted hereunder will be governed by the laws of the State of NEW JERSEY, Title 9 (Arbitration) of the United States Code and by the United Nations Convention on the Recognition and Enforcement of Foreign Arbitral Awards of June 10, 1958. Hearings will take place pursuant to the standard procedures of the Commercial Arbitration Rules that contemplate in person hearings, though hearings may be conducted virtually with the prior written consent of both parties. Time is of the essence for any arbitration under this agreement and arbitration hearings will take place within 90 days of filing and awards rendered within 120 days. Arbitrator(s) will agree to these limits prior to accepting appointment. Each party will bear its own costs and expenses and an equal share of the arbitrators' and administrative fees of arbitration. Except as may be required by law, neither a party nor an arbitrator may disclose the existence, content, or results of any arbitration hereunder without the prior written consent of both parties. The parties agree that failure or refusal of a party to pay its required share of the deposits for arbitrator compensation or administrative charges will constitute a waiver by that party to present evidence or cross-examine witness. In such event, the other party will be required to present evidence and legal argument as the arbitrator(s) may require for the making of an award. Notwithstanding any language to the contrary in the contract documents, the parties hereby agree: that the Underlying Award may be appealed pursuant to the AAA's Optional Appellate Arbitration Rules ("Appellate Rules"); that the Underlying Award rendered by the arbitrator(s) will, at a minimum, be a reasoned award; and that the Underlying Award will not be considered final until after the time for filing the notice of appeal pursuant to the Appellate Rules has expired. Appeals must be initiated within thirty (30) days of receipt of an Underlying Award, as defined by Rule A-3 of the Appellate Rules, by filing a Notice of Appeal with any AAA office. Following the appeal process the decision rendered by the appeal tribunal may be entered in any court having jurisdiction thereof. However, if we bring an action to enforce this Agreement and/or to collect any sum due and owing to it, we will be entitled to recover (in addition to any other amounts it is owed) our reasonable attorney's fees, collection agency fees, and cost of proceedings from you. However, if we bring an

action to enforce this Agreement and/or to collect any sum due and owing to it, we will be entitled to recover (in addition to any other amounts it is owed) our reasonable attorney's fees, collection agency fees, and cost of proceedings from you.

### 53. Rules

**No Waiver** Any failure, delay, relaxation or indulgence by a Party in exercising any power or right conferred on that Party by this Agreement does not operate as a waiver of that power or right unless expressed in writing to be a waiver.

**No Reliance** In entering into this Agreement, the Parties have not relied on any representations or warranties about its subject matter except as provided in this Agreement.

**Amendments** No change, modification, alteration or addition to any provision, or waiver of any provision of this Agreement will be valid unless set forth in writing and signed by each Party.

**Notices** Unless otherwise specified herein, all notices, requests or other communications under or in connection with this Agreement to or upon the Parties will be made to such addresses and to the persons designated on the signature page to this Agreement, or such other people and addresses as provided in writing by either of the Parties from time to time, and will be deemed to have been given hereunder only as follows: (a) if delivered by overnight commercial delivery service, upon receipt as evidenced by the records of such service; (b) if sent by certified or registered mail, seven (7) calendar days after posting it; and (c) if sent by email, once the receiving Party confirms its receipt by reply or other written communication.

**Further Assurances** You will furnish us, upon our request, with any additional information required to comply with applicable law. You will provide us, upon our request, verification of your identity in an appropriate form.

**Counterparts** This Agreement may be executed in any number of counterparts. Signatures sent using a digital signature service or a web-based acceptance form or by facsimile transmission and scanned executed agreements in PDF format sent by email transmission are each valid and binding and will be deemed an original. All counterparts, taken together, constitute one instrument.

**Assignments; Transfers** This Agreement and all the provisions hereof will be binding upon and inure to the benefit of the Parties hereto and their respective successors and permitted assigns, provided that neither this Agreement nor any of the rights, interests or obligations hereunder will be assigned or transferred by any Party without the prior written consent of the other Party, which consent will not be unreasonably withheld and any attempted assignment or transfer in violation of this Section will be void.

**Translations** If we have provided a translation of this agreement, we will use this original version in deciding any issues or disputes which arise under this Agreement.

### 54. Interpretation

**Headings** The headings to the Sections and Schedules are inserted for convenience of reference only and will be ignored in the interpretation of this Agreement.

**Validity** If a court finds that any part of this Agreement is not valid, or is illegal or impossible to enforce, that part of this Agreement will be treated as being deleted, and the rest of this agreement will not be affected.

**Entire Agreement** This Agreement, including any schedules, exhibits or attachments hereto, and together with the Buyer Terms, constitutes the entire agreement between the Parties with respect to the transactions contemplated hereby and supersedes all prior or contemporaneous understandings and agreements of the Parties (whether written or oral) relating to the subject matter of this Agreement. However, in the event of an inconsistency between this Agreement and the Buyer Terms, this Agreement will control.

**Construction** In this Agreement, unless the context otherwise requires: (a) references to sections, exhibits, attachments and schedules are to those in, of and to this Agreement; (b) words importing the plural will include the singular, and vice versa; (c) references to a 'person' will be construed as including references to an individual, company, enterprise, firm, partnership, joint venture, association or organization, whether or not having separate legal personality; (d) use of the word 'will' as an action attributable to a Party means the Party agrees to, will, promises to and covenants to take the actions following or connected to the use of the word 'will'; (e) use of the word 'may' as an action attributable to a Party means that Party has the right, but not the obligation, to take the action following or connected to use of the word 'may;' and (f) references to 'it,' 'its,' 'they,' 'their,' and 'them,' will be construed as including any generic, omni-gender pronoun such as she, hers, her, he, his, him, it, its, they, their and them.

### DEFINITIONS

The following words and expressions will have the meanings given them below when used in this Agreement:

"Abandoned Property" has the meaning given in Section 24.1.

"Agreement" has the meaning given in the Preamble.

"All Charges" has the meaning given in Section 15.1(c).

["Auction Sale" means the sale of Property to the public through competitive bidding administered by Rago/Wright (including sales administered or promoted through a third-party Internet auctioneer authorized by Rago/Wright).]

"Bidding Increments" has the meaning given in Section 10.7(b).

"Bidding Platforms" has the meaning given in Section 10.8(a).

"Buyer Costs" has the meaning given in Section 15.1(c).

"Buyer Terms" has the meaning given in Section 10.1.

"Buyer's Premium" means the following for any lot: (a) 25% of the Hammer Price (or part thereof) up to and including \$250,000; (b) 20% of the Hammer Price (or part thereof) in excess of \$250,000 up to and including \$3,000,000;

and (c) 12% of the Hammer Price (or part thereof) in excess of \$3,000,000. [The Buyer's Premium is not part of sale proceeds.]

"buyer" has the meaning given in the Preamble. "Consignor" has the meaning given in the Preamble.

"Contingency Bid" has the meaning given in Section 10.5(a).

"Dispute" has the meaning given in Section 52.

"Enforcement Costs" has the meaning given in Section 16.

"Hammer Price" means the price for a lot (a) established by the last bidder and acknowledged by the auctioneer before dropping the hammer or gavel or otherwise indicating the bidding on such lot has closed; or (b) achieved through a Private Sale.

"lot" has the meaning given in the Preamble.

"lots" has the meaning given in the Preamble.

"our," has the meaning given in the Preamble.

"Partial Loss" means a lot which has been partially damaged or lost and has, as a result, depreciated in value, in Rago/Wright's insurer's opinion, by less than fifty percent (50%) of its original value.

"Parties" has the meaning given in the Preamble.

"Party" has the meaning given in the Preamble.

"Plus Bid" has the meaning given in Section 10.5(b).

"Private Sale" means a non-public, discrete sale of a lot to a buyer other than through an auction.

"Property" has the meaning given in the Preamble.

"Purchased Lot" has the meaning given in Section 21.

"Rago/Wright" has the meaning given in the Preamble.

"Rago/Wright" has the meaning given in the Preamble.

"remote" has the meaning given in Section 18.

"Reserve" has the meaning given in Section 9.

"Retrieval Period" has the meaning given in Section 23.

"Sale Date" has the meaning given in Section 21.

"Security Interest" has the meaning given in Section 29.

"Storage Fee" has the meaning given in Section 23.

"Total Loss" means a lot (a) which has been lost; or (b) which has been damaged and has, as a result, depreciated in value, in Rago/Wright's insurer's opinion, by more than fifty percent (50%) of its original value.

"us," has the meaning given in the Preamble.

"we," has the meaning given in the Preamble.

"Winning Bid" has the meaning given in Section 3.

"you," has the meaning given in the Preamble.

"your," has the meaning given in the Preamble.

I. ROOKWOOD: THE PRITSKER COLLECTION  
II. EARLY 20TH CENTURY DESIGN  
III. MODERN DESIGN

18 JANUARY 11 AM  
18 JANUARY 1 PM  
19 JANUARY 11 AM

FOR ADDITIONAL INFORMATION  
609 397 9374 | [info@ragoarts.com](mailto:info@ragoarts.com)

BID DEPARTMENT  
609 397 9374 | [bids@ragoarts.com](mailto:bids@ragoarts.com)

ADDITIONAL BID ASSISTANCE  
Eliane Talec  
609 566 7225 | [eliane@ragoarts.com](mailto:eliane@ragoarts.com)  
Guy Benthin  
609 460 3611 | [guy@ragoarts.com](mailto:guy@ragoarts.com)

CONDITION REPORTS  
609 397 9374 | [condition@ragoarts.com](mailto:condition@ragoarts.com)

#### RAGO AUCTIONS

Partners: David Rago, Suzanne Perrault,  
Richard Wright

Chief Administrative Officer: Eliane Talec

Specialists: Jad Attal, Frank Maraschiello,  
Gina M. Tomasello, Jenny Pitman,  
Megan Whippen

Director, Senior Specialist, Fine Art:  
Meredith Hilferty

Specialists, Fine Art: Lauren Bradley,  
Mick Byers

Director, Senior Specialist, Fine Jewelry:  
Dianne Batista

Trust, Estates and Appraisals:  
Sarah Ann Wilson

Research & Content: Sarah Cutler, Laura Nash,  
Amy Hunt

Cataloguers: Allison Richard,  
Michelle Pechinka, Sam Grillo, Kenneth Potts,  
Robin Levey, Robin Daum, Tess Brzezynski

Graphic Designer: Anthony Barnes

Director, Photography Operations:  
Lynnette Mager Wynn

Photographers: Jared Kramer, Allison Wodock

Director, Operations & Logistics: Karen Davies

Client Services, Shipping & Logistics:  
Martine Webber

Client Services: Kathy Buscavage

Warehouse Manager: Owen McGreehan

Assistant Warehouse Manager: Josh Sharik

Property Handlers: Charles Chamberlin,  
Justin Thomas, Chris Mario, Hunter DeGruccio,  
Brandon Kinter, Brielle Cameron, Sam Strzelec

Designer, Gallery Installations:  
Arlen Sam Brown

Controller: Lisa Kolva

Director, Business Systems: Guy Benthin

Auction Administrator: Kara Baylor

Our thanks to the entire auction staff.

#### RAGO AUCTIONS

333 North Main Street  
Lambertville, NJ 08530  
[ragoarts.com](http://ragoarts.com)





