



COACHELLA VALLEY-SAN GORGONIO PASS Corridor Rail Service

RCTC, CVAG, and Caltrans have recently made swift progress to prioritize Coachella Valley-San Gorgonio Pass corridor rail service. Recent achievements include:

- ✓ Included in 2013 California State Rail Plan;
- ✓ Initial planning study performed by Caltrans;
- ✓ Local business and civic support;
- ✓ Ongoing local funding source in a Coachella Valley bus/rail funding split and state bond funding for post study construction; and
- ✓ Phase 1 service development plan underway.

Already Funded

Task 1: Project Work Plan & Outreach Plan	Funded/In Progress	Amount
Define Project Approach	Local Coachella Valley Transportation Development Act (TDA) funds identified for rail as part of a bus/rail split	\$200,000
Identify Stakeholder Outreach		
Task 2: Preliminary Service Planning and Alternatives		
Identify Service Patterns/ Alternatives	California Prop 1B PTMSIEA Public Transportation Modernization, Improvement, and Service Enhancement Account	\$1.5M
Develop Ridership and Cost Projections		

Grant Funding Request

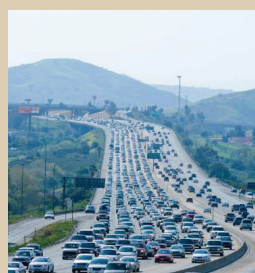
Task 3: Environmental Documentation	Seeking Funding	Amount
Environmental Outreach and Scoping	FRA Passenger Rail Corridor Investment Plan Grant	\$3M grant request
Identify Impacts and Mitigations		
Task 4: Service Development Plan		
Finalize Planning Documents to be Eligible for Federal Funds	Local Coachella Valley TDA funds identified for rail as part of a bus/rail split	\$900,000 local match

"Track" Record: RCTC-State-Federal Partnership for Sustainable Transportation in Southern California



Perris Valley Line

RCTC is constructing the Perris Valley Line (PVL), a commuter rail extension of Metrolink service to Los Angeles Union Station via Orange County and Riverside. PVL received a \$75 million Small Starts grant from FTA.



91 Project

RCTC is constructing the 91 Project with the aid of a \$421 million TIFIA loan. This \$1.3 billion multi-modal project will offer commuter choices through one of California's most congested corridors.



Colton Crossing

RCTC was a partner in the Colton Crossing, a rail-to-rail grade separation of Union Pacific and BNSF, which received a TIGER grant in 2010. This project has alleviated one of the nation's most significant freight rail bottlenecks, improved air quality, and greatly improved the effectiveness of passenger rail service in Southern California.



LOSSAN (Los Angeles-San Diego)

RCTC is a member of the LOSSAN intercity rail JPA, which will soon be responsible for operating Pacific Surfliner Amtrak service between San Luis Obispo and San Diego via Los Angeles. LOSSAN is a model of regional cooperation in Southern California to make rail service easy and convenient for riders.



COACHELLA VALLEY-SAN GORGONIO PASS Corridor Rail Service



Connecting Southern California

Los Angeles to Indio intercity rail service will provide an integrated, sustainable mobility alternative, providing economic opportunities and fostering more livable communities in Southern California's major urban centers.

Sustainable Answer to a Market in Demand

Today there is no viable rail option serving the Coachella Valley. International tourism generates over a half-million visits every year, with many visitors from countries where rail is the primary mode of travel; domestic travel is even greater. Internationally-renowned special events keep the Coachella Valley busy year-round, from the Coachella and Stagecoach Music Festivals, the Palm Springs Film Festival, BNP Paribas Tennis Open, and President Clinton's Humana Golf Challenge, to name a few.

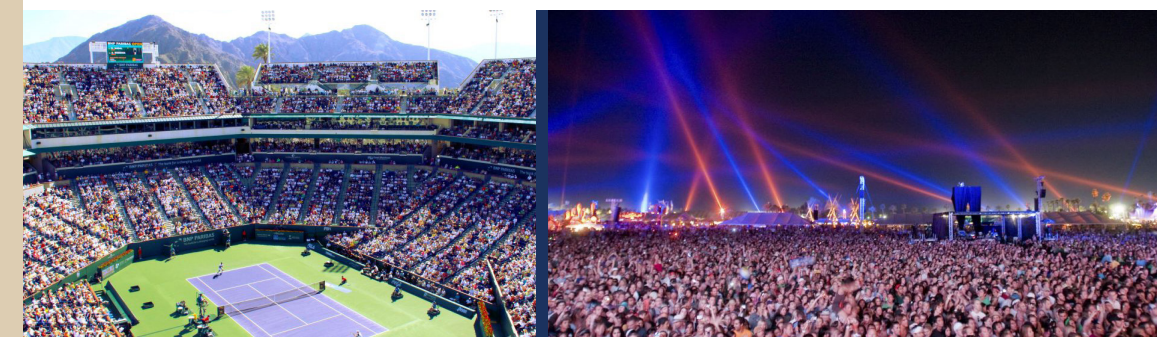
Coachella Valley-San Gorgonio Pass rail service provides a regular, reliable transportation alternative that could lead to greater investments in transit and transit-oriented developments to accommodate the large numbers of people who would rather be car-free in this unique, vibrant enclave of Southern California.

Coachella Valley Association of Governments (CVAG) is investing in one of the largest active transportation projects in the nation: CV Link, a 48-mile multimodal pedestrian/bicycle/NEV path connecting the entire valley. Intercity rail, CV Link, and existing and planned investments by SunLine Transit Agency will make it easier for visitors and residents to enjoy the Coachella Valley without a car.

Economic Opportunity

Nearly one in every six jobs in the Coachella Valley is in the tourism industry. Intercity rail service will increase economic productivity of land and labor in the Coachella Valley by increasing the ease with which domestic and international visitors can access the desert and fuel the local economy.

Reliable intercity rail service also opens up new employment markets for economically disadvantaged communities in the Coachella Valley. Connecting the desert to the urban cores of Riverside, San Bernardino, Orange County, and Los Angeles provides "ladders of opportunity" to access higher-paying jobs that today may be out of reach for many families.

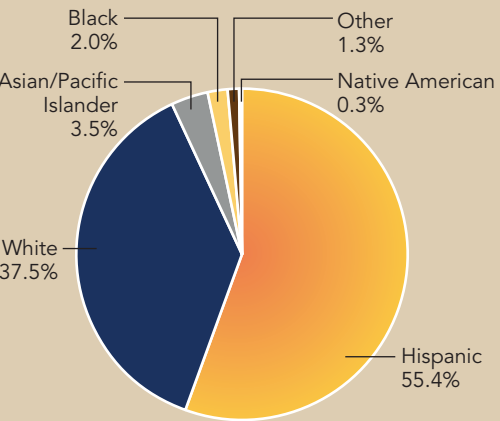


COACHELLA VALLEY-SAN GORGONIO PASS CORRIDOR RAIL SERVICE

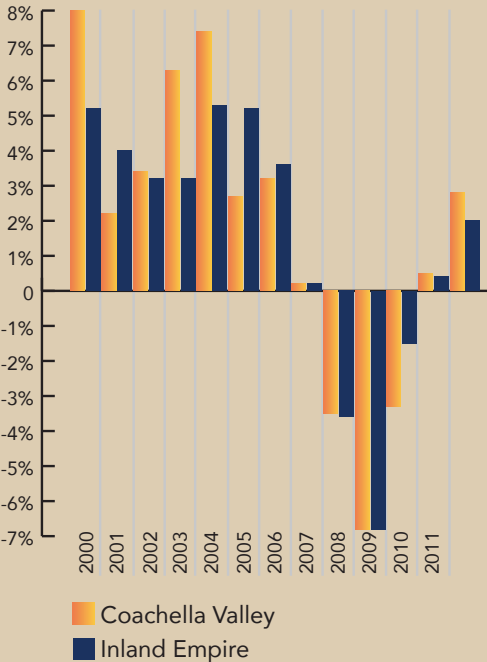
Coachella Valley Profile:

The Coachella Valley is a diverse and growing area of Southern California. The permanent population is majority Hispanic and 45.6% is younger than age 35. In the winter, the region's population swells by two-thirds. The region is home to six Native American tribes. Coachella Valley employment is growing faster than the Inland Empire as a whole; intercity rail service will only add to this momentum.

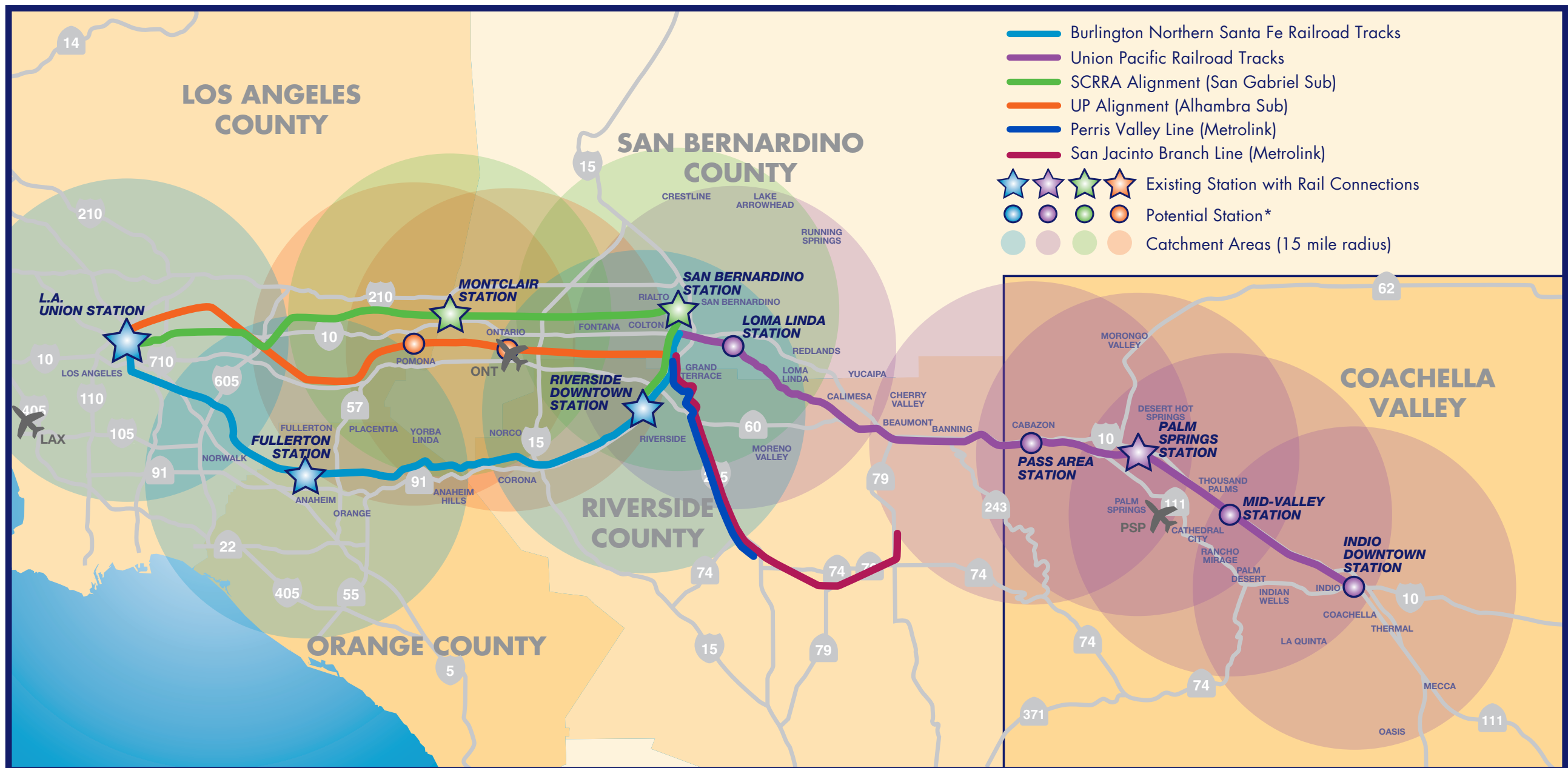
Ethnic Composition - Coachella Valley



Employment Growth Rates



Coachella Valley-San Gorgonio Pass Rail: Creating Car-Free Opportunities Across Southern California									
Potential Station	Los Angeles	Fullerton	Montclair	Ontario Airport	Riverside	San Bernardino	Loma Linda	San Gorgonio Pass	Coachella Valley
Transit/Rail Connections	Amtrak Metrolink Metro Rail Regional express buses Megabus Flyaway Shuttle to LAX	Amtrak Metrolink OCTA	Metrolink Foothill Transit Metro Gold Line (future)	Future Transit Connections	Amtrak Metrolink Riverside Transit Agency (RTA) Megabus	Amtrak Metrolink Redlands Rail extension Omnitrans	Omnitrans Shuttle to Loma Linda VA Hospital Loma Linda University	PASS Transit RTA	Amtrak SunLine Transit Agency CV Link Shuttle to Palm Springs Airport



* Not all potential stations will be needed; construction and alignment alternatives will be determined in the future.

