

Since 1959

# KODIAK<sup>®</sup>

by Skamper

ULTRA-LITE EXPANDABLE  
TRAVEL TRAILERS



*Take Life to the Extreme!*

# ULTRA-LITE EXPANDABLES



Kodiak 235 in Gold Rush

## 7 Floorplans starting at 2862 lbs, loaded with standard features.

For active families on the go, Kodiak Expandables add sleeping space without the additional length and weight of traditional travel trailers. The ultra-lite design and aerodynamic profile make Kodiak a dream to tow. Plus, the interior of Kodiak is packed with high-end features, including designer décor, large kitchens with abundant storage, expansive living spaces and comfortable sleeping areas. So, when it is time for your next travel trailer, choose Kodiak, your best value in ultra-lite expandable travel trailers.



## Now Even MORE STANDARD Features!

- Auto-pop half dome bunk end with futon mattress
- 13.5 BTU air conditioning
- AM/FM/CD player with MP3 port\* & two speakers
- A&E 8300 series awning
- TV antenna with cable prep
- Microwave
- Bunk end lights with fan
- Oven with three burner range
- Double door refrigerator
- Spare tire
- Gas/electric water heater with DSI
- Skylight in bath
- Tub surround
- Diamond plate rock guard
- Exterior spray away

## MORE Standard Features - MORE Value For Your Dollar!

\*See dealer for MP3 port availability in standard stereo

# THE INDUSTRY'S BEST EXPANDABLE

## Revolutionary FastAsleep™ Tent



Kodiak, the leading innovator in ultra-lite RV technology, and Therm-a-Rest®, inventor of the self-inflating camping mattress and manufacturer of premium outdoor equipment, have teamed up to develop the innovative new FastAsleep "Auto-pop" tent. Kodiak chose Therm-a-Rest® to design this groundbreaking product because of the company's 30-plus years of experience enhancing the comfort of outdoor enthusiasts. The result is an RV tent that features easier setup, more livable comfort, and greater protection than anything that's come before.



### Key-Locking Bunk End Doors

Key-locking "Easy Latch" tent doors eliminate the use of unsecured, crank-style door hardware. Simply unlock the tent door, push the release button, open the cam arm and drop the door into the open position.



### Self-Supporting Bunk Ends

Kodiak Expandable's revolutionary bunk ends are self-supporting, suspending the 60" x 80" queen bed from the wall of the trailer. Kodiak does not require exterior tent poles to support the bunk ends. Plus, each bed has a 1200 lb. capacity, the highest in the industry!

## EXCLUSIVELY KODIAK



# KODIAK - THE INDUSTRY'S BEST FEATURES & BEST OPTIONS

## POPULAR OPTIONS



### A. Harmony White Cabinetry Package

An attractive Harmony White Cabinetry Package with Cherry plank linoleum is available with any Kodiak decor for a clean, stylish look.

### B. Extreme Outdoors Off Road Package

For those who need extra ground clearance for off road campsites, our Lift Kit Package includes an 5" body lift kit, extended jack and stabilizers, double entry step, and LT235/75R15 mud and snow tires. (NA 160)



B



C



D



E

### C. Exterior Grill

Take your cooking outside with an exterior barbecue grill.

### D. Industry Exclusive! - AudioLite™ Speakers

Kodiak features AudioLITE™ exterior speakers by Intier.® Utilizing the latest technology, AudioLITE™ speakers provide crisp, undistorted sound. Plus, they are impact resistant and waterproof.

### E. Aluminum Rims

Upgrade your Kodiak Expandable with 5-spoke aluminum rims.

ONLY FROM **KODIAK**  
by Skamper

AND

**THULE**  
SWEDEN

## SMART RV

Thule, the industry leader in cargo management systems for cars and trucks, has partnered with Kodiak to create the Smart RV System. This patented system allows Kodiak owners to create a functional outdoor living area that's easy to set up and enjoy. The Smart RV system uses a number of factory-installed anchor pods mounted on the exterior of the trailer. The accessories mount to the pods in seconds using Thule's innovative quick-release latch system. (Not available with optional lift kit feature.)



The optional **Thule Smart RV Package 1** includes:

- Table with 2 chairs
- 2 Universal hooks
- Countertop
- Trash bin
- Table caddy

The optional **Thule Smart RV Package 2** includes:

- Table with 2 chairs
- Trash bin
- Table caddy

### Smart RV Table and Chairs

48" x 24" heavy duty polyethylene table top and adjustable legs, folds in half for storage. 2 black, weather-resistant camping chairs



### Smart RV Trash Bin

Fits 13 gallon garbage bags and collapses for storage



### Smart RV Countertop

40" x 16" polyethylene countertop with adjustable support arms



### Smart RV Universal Hook

2 hooks per package with foam cushion and grip

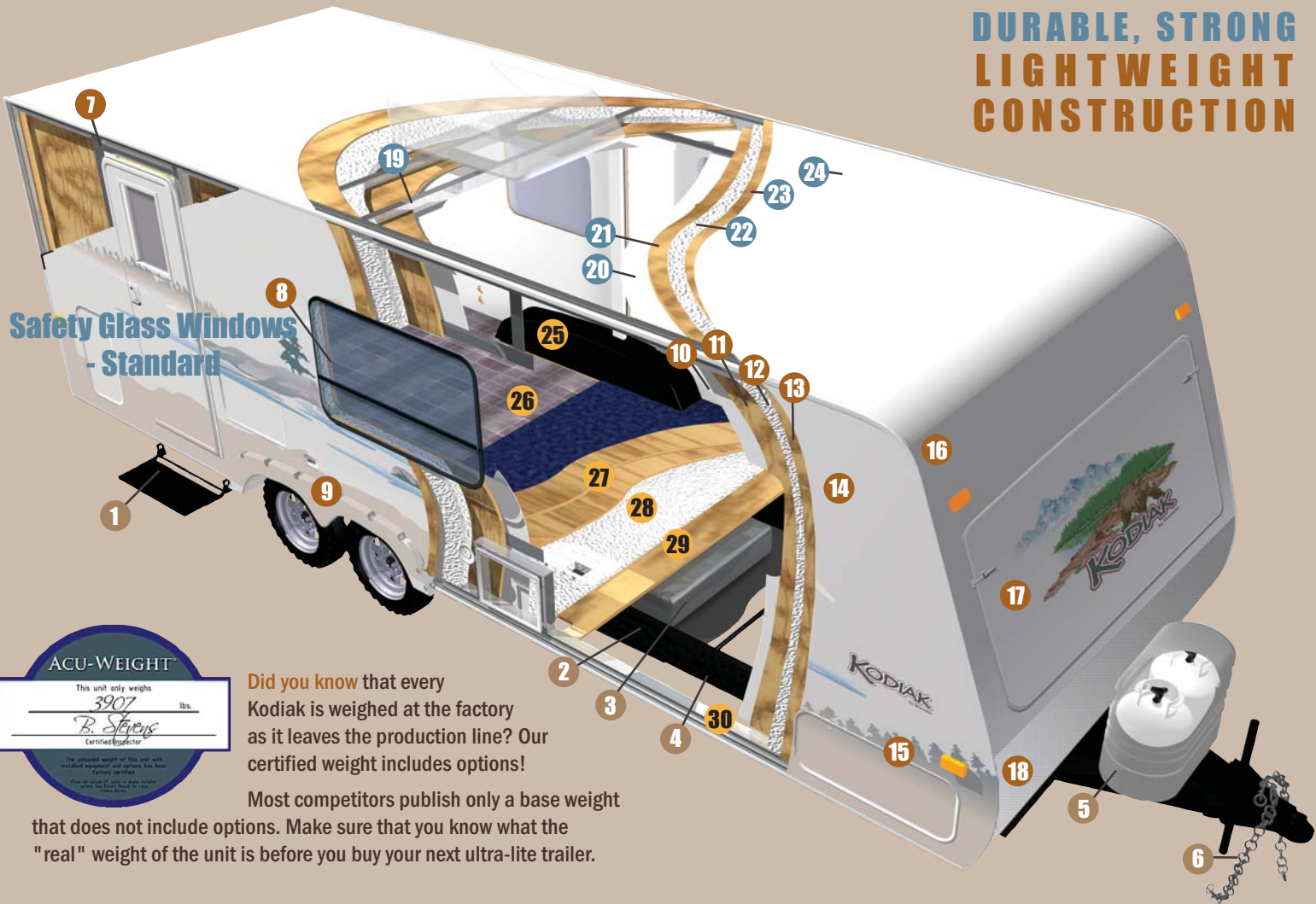


### Smart RV Table Caddy

Attaches to Smart RV Table, and can stand alone to be used with indoor tables

# KODIAK FULLY LAMINATED 6-WAY ALUMINUM FRAMED CONSTRUCTION

**DURABLE, STRONG  
LIGHTWEIGHT  
CONSTRUCTION**



**Safety Glass Windows  
- Standard**



Did you know that every Kodiak is weighed at the factory as it leaves the production line? Our certified weight includes options!

Most competitors publish only a base weight that does not include options. Make sure that you know what the "real" weight of the unit is before you buy your next ultra-lite trailer.

## Aerodynamic Ultra-Lite Design for Better Fuel Economy!

### CHASSIS

Kodiak Expandable travel trailers feature a lightweight I-beam chassis.

1. Folding entry step
2. All tanks mounted in frame. Lowers the center of gravity, and saves valuable interior storage space
3. Large fresh water tank with quick drain feature. Tank design prevents water from standing in tanks during storage.
4. Lightweight I-beam chassis with E-coat paint finish
5. Dual battery rack and (2) 20 lb. LP tanks with ABS cover
6. Integrated heavy-duty safety chains



Kodiak Expandables feature aluminum-framed dinette, bed, bunks and pass-through storage frames. Aluminum frames are more durable than wood-framed structures and save weight.

### LAMINATED WALLS

5-ply aluminum framed laminated construction.

7. Tubular aluminum welded frame reinforced around door
8. Radius corner, safety glass windows
9. ABS fender skirts
10. Decorative wall finish
11. Luan wood backer
12. High density structural foam insulation
13. Luan plywood backer
14. Smooth fiberglass and premium graphics package
15. Insulated baggage doors with key locks and finger locks
16. Aerodynamic front profile
17. Flush mount, self-supporting bunk end door with easy latch locks
18. Diamond plate rock guard

### LAMINATED ROOF

5-ply aluminum framed laminated construction.

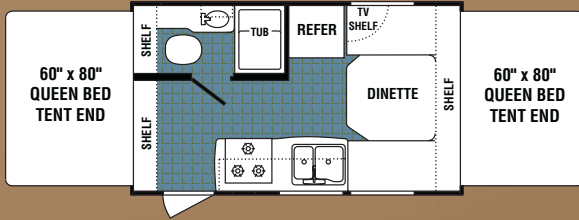
19. Tubular aluminum welded framed roof, reinforced at A/C
20. Decorative ceiling finish
21. Luan wood backer
22. High density structural foam insulation
23. Luan wood backer
24. One-piece EPDM rubber roof with 12 year manufacturer's material warranty

### LAMINATED FLOOR

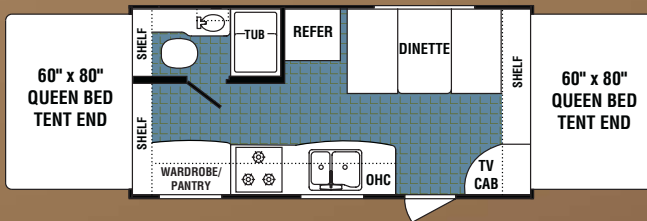
5-ply aluminum framed laminated floor structure.

25. One-piece composite wheel wells
26. Residential vinyl flooring - full length of coach
27. Two layers of floor decking over foam
28. High density structural foam
29. Plywood base with polypropylene waterproof vapor barrier
30. Tubular welded aluminum framed floor

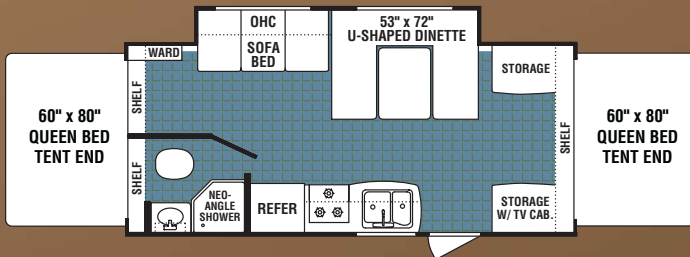
# ULTRA-LITE EXPANDABLE FLOORPLANS



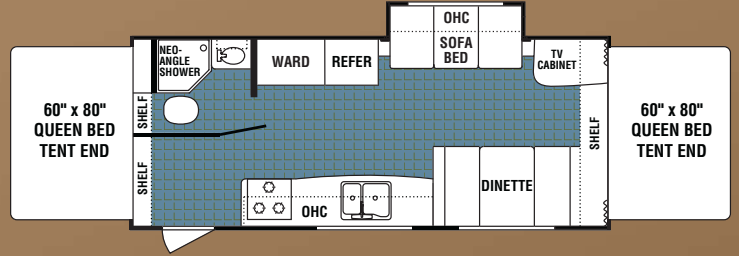
160



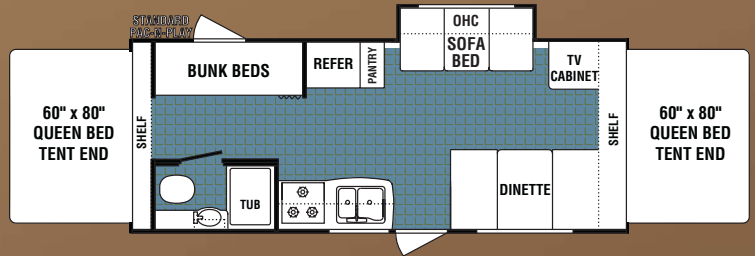
195



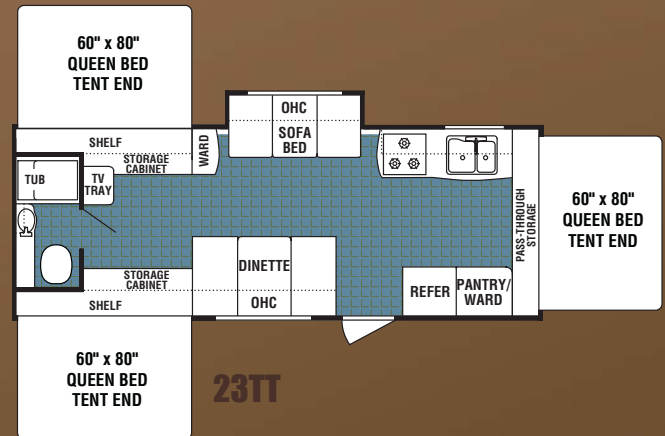
214



235



23BH



23TT

**1/2 TON SERIES**

## WEIGHTS & SPECIFICATIONS

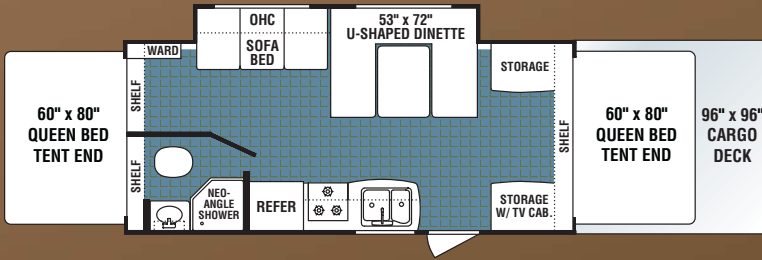
	160	195	214	235	23BH	23TT	314THV
*Axle Weight	2528	3212	3696	3524	3658	3857	4690
*Dry Hitch Weight	334	218	373	362	446	517	419
*Unloaded Vehicle Weight	2862	3430	4069	3886	4104	4374	5109
GVWR	3750	5000	5300	5300	5300	6000	7500
Net Cargo Capacity	888	1570	1231	1414	1196	1626	2391
Exterior Length (closed)	17'6"	20'4"	24'1"	24'4"	26'4"	26'4"	32'10"
Exterior Height with A/C	9'8"	9'8"	9'8"	9'8"	9'8"	9'8"	10'8"
Exterior Width	8'	8'	8'	8'	8'	8'	8'
Fresh Water Capacity	38	38	38	38	38	38	38
Gray Water Capacity	39	39	39	39	39	39	39
Black Water Capacity	22	22	28	22	28	28	28
Furnace Size (BTUs)	18,000	18,000	19,000	19,000	19,000	19,000	19,000

Tire Size (all models, NA 314THV): ST205/75D14(C) Tire Size 314THV: LT235/75R15(C) Interior Height (all Kodiak models): 6'4"

\*Axle weight, dry hitch weight and unloaded vehicle weight (UVW) are base weights of units without options. Each unit includes a weight label which lists specific weight information for that unit. Vehicle Loading – Every effort has been made to provide the greatest number of options for the recreation vehicle owner. Along with these choices comes the responsibility to manage the loads that are imposed by the choices so that they remain within the manufacturer's specified chassis weight limits. Do not overload the recreation vehicle. Net carrying capacity (NCC) determined by subtracting unloaded vehicle weight (UVW) from gross vehicle weight (GVWR) and includes fluids, options and cargo. Liquid capacities and weights are approximations only. Warning: This information is intended as a guide only. Weights of individual vehicles may vary. Consult your owner's manual for complete loading, weighing and towing instructions.

# INTRODUCING THE 314THV EXPANDABLE TOY HAULER

**96" X 96" CARGO DECK WITH 1600 LB. LOAD CAPACITY!**



**314THV**



D-ring tie-down rings

## A Best-Selling Kodiak Expandable Floorplan is Now a Toy Hauler!

The new 314THV features a 96" x 96" cargo platform with expanded metal deck and a 1600 lb. capacity. Securely take along your toys with eight conveniently placed D-ring tie-downs!



### 314THV Standard Features

- 1600 lb. Cargo deck capacity
- D-ring tie-down rings
- *Fulton* aluminum deck rails double as cargo ramps
- Anti-slip deck finish
- Heavy-duty 2000 lb. hitch jack
- Four corner stabilizer jacks
- Standard Lift Kit Package with off-road tires
- Queen 60" x 80" bunk ends with Auto-pop tent
- Large U-shaped dinette
- Sleeps 7!

**From the Leader in Ultra-Lite Technology**

# MORE STANDARD FEATURES

FROM THE INDUSTRY LEADER IN ULTRA-LITE TECHNOLOGY



## Exterior Features

8' Wide floorplans  
 Auto-pop half dome, self-supporting bunk end with futon mattress  
 Key-locking "Easy Latch" tent doors  
 60" x 80" queen beds in tents  
 Pac-N-Play exterior storage in bunkhouse (23BH only)  
 A & E awning  
 Four corner stabilizer jacks with sand pads  
 Diamond plate rock guard  
 Hot/cold exterior shower  
 Two 20 lb LP bottles with ABS cover  
 26" radius corner entry door  
 Flush combo entry latch/deadbolt lock  
 ABS wheel wells and fender skirts  
 Tandem axles with 4-wheel electric brakes  
 Spare tire with cover  
 6-Way welded aluminum laminated superstructure (roof, floor and walls)  
 Lightweight I-beam frame with E-coat finish  
 EPDM one-piece seamless rubber roof  
 Corrosion-free laminated underbelly  
 High-end designer graphics  
 Rain gutter with corner downspouts  
 Rear bumper and corner guards  
 Single entry step  
 Tinted, radius corner, clamp ring safety glass windows  
 Entry-assist handle at door  
 Break-away trailer switch  
 120V Exterior outlet

## Interior Features

Bunk end lights with fan  
 Bathroom medicine cabinet  
 Designer window treatments  
 Fiberlink bathtub  
 Shower curtain  
 Residential tile-like linoleum  
 Mini blinds throughout  
 Power roof vent in bathroom  
 Skylight in bath  
 Tub surround

## Appliances & Electrical

Norcold double door gas/electric refrigerator  
 13.5 BTU air conditioning  
 AM/FM/CD stereo with MP3 port\* and 2 speakers  
 Microwave  
 Range with oven and stove cover  
 12V Electric slide-out motor  
 30 Amp power cord with storage compartment  
 6 Gallon gas/electric water heater with DSI  
 12V Interior lights with wall switch  
 Fire extinguisher  
 LP/Carbon monoxide/Smoke detectors  
 TV antenna  
 Range hood with 12V light and exhaust fan  
 Solid state converter with built-in battery charger  
 Systems monitor panel  
 12V Demand water pump

\*See dealer for MP3 port availability in standard stereo

## THE BEST OPTIONAL FEATURES THAT YOU WANT

- THULE SmartRV Package 1: table, 2 chairs, countertop, 2 hooks, trash bin, table caddy
- THULE SmartRV Package 2: table, 2 chairs, trash bin, table caddy
- Exterior sound system
- Heated holding tanks (NA CSA)
- Water filter system with spout
- Exterior barbeque grill
- Aluminum rims
- Fantastic vent (NA 160 & 23BH)
- Lift Kit Package (see page 3 for details)
- Spare Dunlop Rover tire
- Harmony white wood package with cherry plank linoleum
- Indoor/outdoor satellite/cable connection

*Take Life to the Extreme!*

2164 Caragana Court ■ Goshen, IN 46526  
 Sales: 574.534.1224 ■ Fax: 574.975.0556  
 Parts & Service: 574.537.0700

[www.kodiak-rv.com](http://www.kodiak-rv.com)

Your Local Dealer

## DECOR OPTIONS



Carbon



Gold Rush



Helene Vineyard



**1 YEAR BUMPER TO HITCH LIMITED WARRANTY**  
**2 YEAR STRUCTURAL & APPLIANCE LIMITED WARRANTY**

\*See owner's manual for complete warranty details.



Product information, specifications, and photography in this brochure were as accurate as possible at time of printing. Photographs may contain some features that are optional on your vehicle. Since we continually strive to improve our products, actual products may differ. Prices and specifications are subject to change without notice. All capacities are approximate and dimensions are nominal. Some features shown are optional and may be different or unavailable in Canada. Vehicles are designed for recreational use only and not intended for use as a primary residence. All product brand names used in this brochure are registered trademarks of Thor Industries, Inc. Unauthorized use of trademarks is prohibited by law.