



**Seeking foster families**  
**PAGE 5**



**POWWOWS returns in 2021**  
**PAGE 13**

PRSR STD  
 U.S. POSTAGE PAID  
 Ignacio, CO 81137  
 Permit No. 1  
**August 13, 2021**  
 Subscription or advertising information, 970-563-0118  
**\$29 one year subscription**  
**\$49 two year subscription**  
 Vol. LIII, No. 16

*The Southern Ute Drum: Winner of 14 Native American Journalist Association awards in 2021!*



**Jeremy Wade Shockley/SU Drum**

The Southern Ute Indian Tribe is the third tribally affiliated member of the Western States and Tribal Nations (WSTN) Natural Gas Initiative, Growth Fund Director, Shane Siebel signs WSTN's organizing Memorandum of Understanding, Tuesday, Aug. 3, in Ignacio, Colo. The Southern Ute Indian Tribe is entitled to appoint a representative to the Board of Directors.

**GROWTH FUND**  
**Tribe joins Western States and Tribal Nations Natural Gas Initiative**

*Staff Report*  
 SOUTHERN UTE GROWTH FUND

The Southern Ute Indian Tribe today became the newest member of Western States and Tribal Nations (WSTN) Natural Gas Initiative, expanding the organization's sovereign tribal perspective and strengthening its voice to advocate for energy development that boosts rural economies, tribal self-determination and environmental improvement.

The Tribe's decision to join WSTN bolsters the governance of the unique international initiative led by sovereign tribal nations, states and county governments. As the latest government to sign WSTN's organizing Memorandum of Understanding, the Southern Ute Indian Tribe is entitled to appoint a representative to the Board of Directors.

The Southern Ute Indian Tribe is the third tribally-affiliated member of WSTN, joining the Ute Indian Tribe



**Jeremy Wade Shockley/SU Drum**

Southern Ute Growth Fund Director, Shane Siebel gives a welcome address to WSTN board members at the Growth Fund Building, Tuesday, Aug. 3, in Ignacio, Colo. The Tribe's decision to join WSTN bolsters the governance of the unique international initiative led by sovereign tribal nations, states and county governments.

**Tribe page 2**

**NATIVE MEDIA**  
**Drum wins 14 Native American Journalist Association awards!**

*NAJA honors outstanding Indian Country journalism*

*By Jeremy Wade Shockley*  
 THE SOUTHERN UTE DRUM

The Native American Journalist Association (NAJA) announced the winners for the 2021 National Native Media Awards, Wednesday, Aug. 4. The Southern Ute Drum took home a total of 14 awards: including the prestigious honor of winning first place for General Excellence and first place for Best Digital Publication.

The Southern Ute Drum also swept the Best News Photo category with first place going to Reporter/Photographer McKayla Lee for her photographs of the "Sing our Rivers Red" Ear-ring exhibit. Second place to Graphic Specialist Robert L. Ortiz for his photograph of the tuuCai Wellness Court titled, "Wellness Court honors Weaver." Third place to Lee for



**McKayla Lee/SU Drum archive**

Lexy Young and Kalynn Weaver trace outlines of faces and names that are etched into the Korean War Veterans Memorial on the National Mall. Southern Ute Drum Reporter/Photographer, McKayla Lee won second place in the Best Feature Photo category of the 2021 NAJA Awards.

"SUIMA hosts 'Family Night' & Book Fair." Honorable Mention was awarded to Media Archivist Fabian Martinez for his photograph of the tuuCai Wellness Court titled, "Wellness Court honors Weaver." Martinez also earned a

third-place win for Best Feature Story for a feature titled, "Ghosts of the Railroad: La Boca Bridge revitalized." In the Best Feature Photo category, Lee won second

**Drum page 12**



**McKayla Lee/SU Drum**

SunUte Lifeguard, Christopher Mooney stands alert watching over the very pool where he saved a young boy's life 15 years ago in the SunUte Community Center.

**SUNUTE COMMUNITY CENTER**  
**Lifesaving hero returns to SunUte as lifeguard**

*By McKayla Lee*  
 THE SOUTHERN UTE DRUM

On Tuesday, May 23, 2006, at the SunUte Community Center a life changing event took place. A young six-year-old Christopher Mooney had been swimming in the pool at SunUte when he came across the lifeless body of

his fellow peer from the Bayfield Family Center, At-lee Beam. Mooney not only recognized the crisis but was able to calmly and effectively inform the lifeguards on duty of the situation. Once the lifeguards, Nick Joswick and Joslyn Rowley were made aware they immediately jumped into ac-

tion. They took the young boy out of the pool and laid him on the pool deck while first responders were called. The guards then cleared the pool and guided the ambulance personnel to the young boy. Then first responders performed lifesaving procedures, the young boy's eyes

**Lifesaving page 7**

**SOUTHERN UTE TRIBE**  
**Southern Ute Indian Tribe moves to Phase III**

*"Protect Our Neighbor," reopens Tribal Operations*

*Staff report*  
 SOUTHERN UTE INDIAN TRIBE

On Friday, July 30, 2021 the Southern Ute Tribal Council, in consultation with the Southern Ute Indian Tribe's Incident Management Team (IMT), approved Resolution 2021-104, which amended the Tribe-wide Recovery Plan adopted in March of this year. Modifications were made to the metrics and restrictions within approved Phases of the Recovery Plan.

The revisions to the key metrics and restrictions support a move to Phase III "Protect Our Neighbor," which is one phase below the Fully Open phase. The IMT will continue to monitor the data closely and provide the tribal leadership with the most up-to-date information in an effort to support the tribal reopening while prioritizing the health and safety of the tribal membership, employees, and visitors. The

following graphic outlines the Key Metrics and Restrictions to be followed during each of the Phases.

Effective Monday, August 9, 2021, the Southern Ute Indian Tribe will move to Phase III "Protect Our Neighbor." The Tribal offices will open to the public, employees, and visitors, all of whom will be required to follow COVID-19 health safety guidelines.

- Below are examples of capacity restrictions when the Tribe moves to Phase III "Protect Our Neighbor."
- Personal gatherings are restricted to no greater than 125 persons.
  - Indoor capacity is permitted up to 100% and 500 maximum capacity.
  - Outdoor capacity is permitted up to 100% and 500 maximum capacity.

More information can be found on the Southern Ute Indian Tribe's website and social media, in the Southern Ute Drum,

and on the air at KSUT Tribal Radio. Individuals can also call the Southern Ute Indian Tribe directly at 970-563-0100 Monday through Friday from 8 a.m. to 5 p.m.

If you are sick, please self-isolate. If your symptoms begin to worsen, please call your primary healthcare provider or the Southern Ute Health Center at 970.563.4581. Do not arrive at your primary health care provider office without calling to notify the professionals of your symptoms.

Please continue to practice good hygiene by washing your hands with soap and warm water for 20 seconds, cough and sneeze into the bend of your elbow or in a tissue then throw the tissue away. Clean and disinfect frequently touched objects in your home or workplace. Please continue to practice social distancing staying six feet away from others. Stay connected with your loved ones and our tribal elders.

Metrics	PHASE I "STAY AT HOME"	PHASE II "SAFER AT HOME"		PHASE III "PROTECT OUR NEIGHBOR"	
	SEVERE RISK	LEVEL 3 HIGH RISK	LEVEL 2 CONCERN	LEVEL 1 CAUTIOUS	CAREFUL
PERSONAL GATHERING SIZE	No greater than 5	No greater than 10	No greater than 20	No greater than 30	125 CAP
INDOOR SETTING CAPACITY	CLOSED	25% 25 Max Capacity	50% 75 Max Capacity	75% 175 Max Capacity	Up to 100% 500 Max Capacity
OUTDOOR EVENTS	CLOSED	25% 50 Max Capacity	50% 100 Max Capacity	75% 200 Max Capacity	Up to 100% 500 Max Capacity

courtesy Southern Ute Indian Tribe

Key Metrics and Restrictions for Phases of the COVID-19 Pandemic.

## TRIBE JOINS WESTERN STATES • FROM PAGE 1

and BlackHawk Energy, a wholly owned Section 17 Federal Corporation of the sovereign Jicarilla Apache Nation established under a federal charter. The other government members are the states of New Mexico, Utah, Wyoming and Baja California, Mexico, as well as the western Colorado counties of Garfield, Mesa, Moffat and Rio Blanco.

“The Southern Ute Indian Tribe has a strong and successful legacy in energy and economic development. The Tribe understands the benefit of strong business and intergovernmental relationships to strengthen its self-determination and sovereignty,” Southern Ute Tribal Chairman Melvin J. Baker said. “The Tribe is excited for the opportunity to join Western States and Tribal Nations and have a seat on the board encompassing multiple tribes, states and counties focused on supporting rural economies while collaborating to provide energy transition solutions for the future.”

WSTN advocates for rural economic development, tribal self-determination and a cleaner environment by supporting the development of the markets and infrastructure necessary to export liquefied natural gas, sourced from western North American basins, to nations that want lower-emitting fuel options to power growing econ-

omies. In June, WSTN released a study showing that net lifecycle emissions reductions of 42%-55% were possible if U.S.-sourced LNG replaced coal for power generation in five Asian nations.

“The Ute Indian Tribe welcomes the Southern Ute Tribe to Western States and Tribal Nations. As co-founders of this unique organization, our mission has always been to attract more Native American voices to our effort to advance tribal self-determination through responsible development of our energy resources,” said Shaun Chapoose, Chairman of the Ute Tribal Business Committee.

He added: “As the original guardians of the environment, sovereign tribal nations are uniquely equipped to chart a course toward energy development that supports our continual environmental improvement. With the participation of the Southern Ute Tribe and the Jicarilla Apache Nation through their wholly owned Section 17 Federal Corporation, BlackHawk Energy, our collective voice is stronger and makes good on the vision we foresaw when we insisted that the name of the organization reflect more than a single tribal nation.”

“The addition of the Southern Ute Indian Tribe to WSTN is another landmark for our organization and its ability to provide a coherent, unifying direction for the en-

ergy and environmental future of the West,” WSTN President Andrew Browning said. “The Southern Ute Indian Tribe brings not only another sovereign tribal perspective, but a sophisticated approach toward doing business in a way that builds wealth for its people in harmony with the environment.”

“New Mexico welcomes the Southern Ute Indian Tribe to the coalition. We look forward to collaborating on economic opportunities for our region,” New Mexico Energy, Minerals and Natural Resources Department Cabinet Secretary Sarah Cottrell Propst said.

“We welcome the Southern Ute Tribe and look forward to working together to advance the interests of Western States and Tribal Nations for the benefit of our communities,” Glen Murrell, Executive Director of the Wyoming Energy Authority said.

### About Western States and Tribal Nations

Western States and Tribal Nations is a unique, trans-national initiative led by state, county and sovereign tribal nation governments, focused on creating rural economic development, advancing tribal self-determination and reducing global emissions by exporting western North American natural gas to international markets that need lower-emitting fuels.



## Many Moons Ago



Jeremy Wade Shockley/SU Drum archive

### 10 years ago

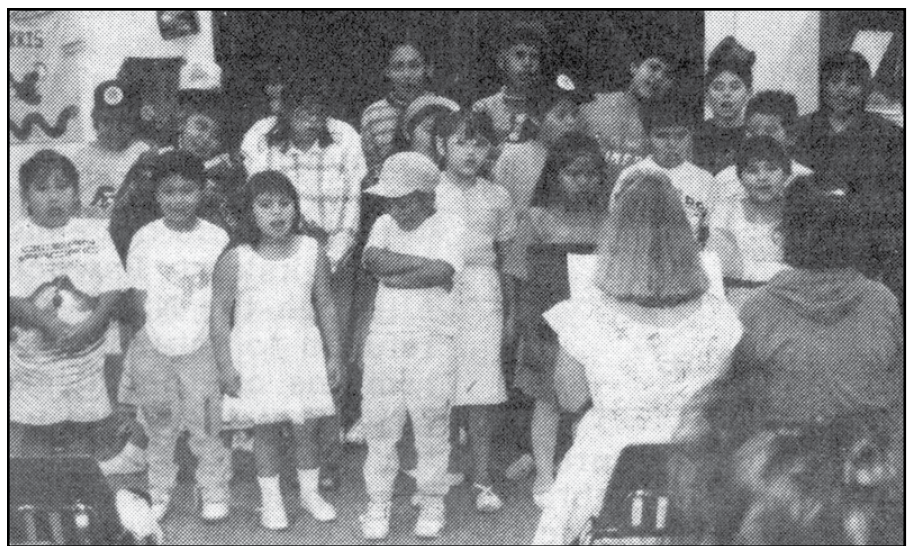
Southern Ute Chairman Pearl E. Casias shares a moment together with longtime colleague and Southern Ute elder, Vida Peabody on the Dam facing Lake Nighthorse during a site tour on Friday, July 29. The reservoir reached its full capacity on June 29 of 2011 as part of the historic Animas-La Plata Project. This photo was first published in the August 12, 2011, issue of The Southern Ute Drum.



Oolcuu Buckskin/SU Drum archive

### 20 years ago

The crowning of the new San Ignacio Fiesta Queen was an exciting and memorable event for Amanda Lucero, who will hold the title for 2001–2002. Laurena Richards, who was the 2000-2001 Queen, is seen passing on the title she received a year prior. This photo was published in the August 10, 2001, issue of The Southern Ute Drum.



Lane Eskew/SU Drum archive

### 30 years ago

Children in Kindergarten through seventh grade celebrated the end of the Education Department’s summer session on Thursday, August 1, 1991. Students learned Native American customs and culture through art, puppetry, creative writing and literary skills. The students showcased their knowledge by performing a puppet show, by telling traditional stories and by singing traditional songs in Ute. This photo was published in the August 12, 1991, issue of The Southern Ute Drum.



SU Drum archive

### 40 years ago

Don Brown, Eddie Box Sr., and Chairman Leonard C. Burch at the train depot to help celebrate the Centennial anniversary on August 5, 1981, to commemorate 100 years of the Narrow-Gauge train operation. This photo was published in the August 14, 1981, issue of The Southern Ute Drum.



## Southern Ute Indian Tribe Tribal Member General Meeting

Friday, September 17, 2021 | Light morning refreshments and boxed lunches will be provided.  
Sky Ute Casino Resort, Event Center | Meeting agenda will be forthcoming.  
8:30 a.m. until 5:00 p.m.

COVID Safety Guidelines will be in place. In order to practice safe social distancing and to prioritize the health safety of those in attendance, in-person participation will be limited to 126 persons. All individuals will be required to wear a face covering while in attendance.

Tribal members can access the meeting via Web-Ex Event on the Tribal Member Portal. Members can also register to attend using the link below.  
<https://bit.ly/SuitGm21>  
Click "Register" then enter the registration password: sutm

Registration will be approved after verification of enrollment. Members will only be allowed to log-in to the Web-Ex Event 30 minutes prior to the start of the meeting.

For additional information please contact Ms. Lindsay Box, Tribal Council Communication Specialist at 970.563.2313 or via email at [lbox@southernute-nsn.gov](mailto:lbox@southernute-nsn.gov) or for technical assistance please contact Mr. Landri Wauneka at 970.563.5055 or via email at [lwauneka@southernute.com](mailto:lwauneka@southernute.com)

Tribal Member Portal - <http://www.southernute-nsn.gov/members/>

*This is a closed informational meeting for membership ONLY, all visitors will be asked to leave immediately.*

P.O. Box 737 | Ignacio, Colo. 81137 | 970.563.0100 | [www.southernute-nsn.gov](http://www.southernute-nsn.gov)



In observance of the federal holiday, the Permanent Fund, Growth Fund, and SUSS offices will be closed Monday, September 6, 2021 for Labor Day. Normal business hours will resume on Tuesday, September 7, 2021.



## Native American Dance Class

Interested Participants & Instructors Wanted










The Southern Ute Cultural Preservation Department is interested in hosting Native dance class. This class is for all levels of dancers from beginner to advanced. We want to hold an evening class after 6 p.m. in the middle of the week. Having regalia is optional, we are simply interested in teaching dance etiquette and becoming comfortable in your respective style of dance. Making your own regalia may become part of the class in the near future.

This will also be a great time for drum practice for drums or any individuals wishing to start drumming.

This is a call for those interested in participating, which will help us determine how large of a venue is needed and how many classes we can accommodate.

Interested individuals or groups please call  
Marvin Pinnecoose, Events Coordinator  
at (970) 563-2988 or email at  
mpinnecoose@southernute-nsn.gov

## CULTURAL PRESERVATION

# Haaland welcomes totem pole honoring sacred Native American sites

### Cross country journey culminates in Nation's Capitol

**Staff report**  
**RED ROAD TO DC**

Tribal leaders and Native American grassroots activists today delivered a totem pole honoring sacred Indigenous sites to Washington, D.C., to the Biden administration. In an event on the National Mall, the totem pole was welcomed by Secretary of the Interior, Deb Haaland; President Biden's Chair of the Council on Environmental Quality, Brenda Mallory; and PaaWee Rivera (Pojoaque Pueblo), Senior Advisor for Intergovernmental Affairs and Director of Tribal Affairs at the White House.

Tour organizers were also joined at the final stop of the Red Road to DC, a cross-country tour highlighting Indigenous sacred sites at risk, by tribal leaders from across the country.

Leaders and activists brought the totem pole carved by the House of Tears Carvers of Lummi Nation to places sacred to Native peoples that are at risk from infrastructure projects and resource extraction. A permanent location for the totem pole will be announced later.

"The totem pole holds the prayers of all who blessed it along its journey to D.C.," said Jewell James, a member of the Lummi Nation and master carver at House of Tears Carvers. "Across Indian Country, our places where we pray, gather food and medicine, and hold our ceremonies, are being threatened by the greed and carelessness of corporations. We wanted to bring attention to this crisis."

With stops in Snake River, Bears Ears, Chaco Canyon, Black Hills, Missouri River, Standing Rock, Line 3 in Minnesota, and Line 5 in Michigan, the tour organizers say their ultimate goal is to see a significant change in policy.

"Native people must have a seat at the decision-making table if we are to see real change happen," said Judith LeBlanc (Caddo), executive director of Native Organizers Alliance, one of the tour hosts. "We need a system of consultation that engages our Tribal Nations and gains their consent at every stage of projects that impact the wellbeing of our land, water and communities."

Fawn Sharp, president of the National Congress of American Indians agrees. "When the federal government considers any action that impacts tribal communities, the United States must acknowledge and recognize the political standing and equality of Tribal Nations to be at the table and heard in good faith government-to-government negotiations," said Sharp. "We possess the inherent right as sovereign nations to speak decisively in all matters which affect our citizens and lands before any action by the United States is taken. Free, prior, and informed consent must be the governing policy for all federal agencies."

Leaders say the absence of this policy has not only threatened sacred places, but exacerbated the climate crisis.

"It is time for the United States to honor treaties with sovereign Tribal Nations," said Whitney Gravelle, president of the Bay Mills Indian Community in Michigan. "For too long tribal



courtesy Red Road to DC

The totem pole was welcomed by Secretary of the Interior, Deb Haaland on the National Mall in Washington, D.C.

concerns have been brushed aside in favor of companies like Enbridge Energy [Line 5] that have abysmal track records not only where the environment is concerned, but also for violating, threatening, and harming long-standing treaty-protected rights and treaty-protected resources. Enough is enough. As my ancestors long before have taught my people, if we do not protect the land and water, we risk destroying a way of life for our people and we risk destroying the heart of Turtle Island [North America]."

Dozens of speakers on the National Mall, representing tribes across the nation, shared a similar sentiment. They called on the Biden administration to take immediate action to protect Indigenous sacred sites.

"The places where our ancestors once walked, fished, and prayed is what sustains us as Native people," said Daniel Tso, member of the Navajo Nation Tribal Council. "But oil and gas companies look at our land like it's there for the taking. It's just Indian land, not anything important. But this is our way of life. And until the federal government changes how it does business, you will keep seeing gatherings and rallies like this one today. We have an obligation to defend this sacred landscape and we won't stop until it's protected."



**100TH ANNUAL**  
*Southern Ute Tribal Fair*

**POSTPONED UNTIL 2022!**

For more information, please contact the Southern Ute Cultural Preservation Department at 970.563.2983



## 2022 DATE: TO BE DETERMINED

@ Southern Ute Indian Reservation, Colorado

PREPARE FOR NEXT YEAR'S CENTENNIAL CELEBRATION!

+ <b>EXHIBITS</b> +	+ <b>COMPETITION</b> +	+ <b>EVENTS</b> +
Agriculture	Kids Games	Powwow
Arts & Crafts	Chicken Pull	Royalty Crowning
Homemaking	Tug-o-war	Parade
Baking	Duck Race	Handgame
Livestock	Grease Pole	Concert
	Horseshoe	Fireworks

# 2021 ANNUAL SOUTHERN UTE TRIBAL FAIR POWWOW

CANCELED

Your Southern Ute Powwow Committee has decided to not host the annual fair powwow this year. This decision was not made lightly and our number one goal is to make sure we are looking out for our tribal communities.

**Tog'oiak**  
Powwow Committee Members  
Tyla Rose 970.426.5320  
Dona Frost 970.553.9291  
Mikki Naranjo 970.317.1740  
Rochelle Aguilar 970.759.1722  
Kayla Armstrong  
Davidson Lopez  
Jalisa Paul  
soutepowwow@southernute-nsn.gov



## Southern Ute Pageant

### - 2021 -



**Multi Purpose Facility**  
6:00 p.m.

In person attendance limited to:  
Southern Ute Royalty, Royalty Contestants,  
Immediate Family of Royalty and Contestants

Pageant will be held Via Southern Ute  
Media i.e. Facebook and Instagram

**TO ELIMINATE ANY POSSIBILITIES OF COVID OUTBREAKS**

Southern Ute Royalty Committee: Jennifer GoodTracks - Corliss Taylor - Daisy Bluestar

**Royalty Categories:**

**Miss Southern Ute**  
Age: 16-25

**JR. Miss Southern Ute**  
Age: 10-15

**Little Miss Southern Ute**  
Age: 5-9

**Southern Ute Brave**  
Age: 5-15

APPLICATIONS WILL BE AVAILABLE FOR PICK UP AT UTE PARK  
256 UTE ROAD, IGNACIO, CO

SATURDAY JULY, 24 & SATURDAY, JULY 31, 2021

SATURDAY, AUGUST 7, 2021 & SATURDAY, AUGUST 14, 2021

12:00 - 3:00 P.M.

RETURN COMPLETED APPLICATIONS BY:  
MONDAY, AUGUST 16, 2021 AT UTE PARK  
BETWEEN THE HOURS OF 3:00- 5:00 P.M.

For more information please Contact: Daisy Bluestar - daisybluestar2003@gmail.com/ (970) 553-0662



## HEALTHY RECIPES

# Easy pasta salad with fresh mozzarella, tomato and basil

*Lisa B. Smith, RDN*  
SHINING MOUNTAIN HEALTH & WELLNESS

With outdoor meals, family picnics and BBQs at this time, why not bring a delicious dish that is simple to prepare and will impress the group?!

*Lisa B. Smith, RDN is a Registered Dietitian Nutritionist with the Southern Ute Shining Mountain Health and Wellness.*



courtesy Lemon and Zest

### Easy Pasta Salad

#### Ingredients

- 16 oz whole wheat rotini
- 10 oz grape or cherry tomatoes
- 8 oz fresh buffalo mozzarella (balls or log)
- 3 oz. fresh baby arugula
- Handful of fresh basil leaves
- 1/2 to 3/4 cup balsamic vinaigrette
- Salt and pepper to taste
- (You can get creative and add things like olives, bell pepper or broccoli!)

#### Directions

1. Cook pasta according to package directions.
2. Cut tomatoes in half.
3. Cut mozzarella into small bite-sized pieces.
4. Chop basil into smaller pieces.
5. Prepare \*homemade balsamic vinaigrette (or use store bought).
6. Place all ingredients together (pasta,

tomatoes, mozzarella, basil, arugula and dressing) and toss to combine.  
7. Salt and pepper to taste.

#### \*Homemade Balsamic Vinaigrette

- 1/2 cup olive oil.
- 3 T balsamic vinegar.
- 1 tablespoon Dijon mustard.
- 1 tablespoon honey or maple syrup.
- 2 cloves garlic, minced.
- Salt and pepper to taste.
- Pinch of herbs such as basil, oregano or thyme (optional).

1. Place all ingredients in a mason jar and shake vigorously to combine.
2. May be stored in refrigerator for up to 10 days, simply take out of fridge, let rest for 10 minutes, shake and serve.

Servings: 12 cups Nutrition per serving:  
247 Calories, 8g Fat, 33g Carbohydrates,  
4.4g Fiber, 11g Protein

## Native Wellness Institute Support Circles Providers Support, Men's Support & Self-Care

The Southern Ute Native Connections Program welcomes all who are interested and looking for a virtual support group at this time. These virtual support groups will be offered only for a limited time to our community for free. Please attend and find support among other community members.

- **Men's Support Circle:** Tuesday, Aug. 17, 6 – 8 p.m. – All fathers, uncles, grandfathers, brother's, and those looking for men's wellness and healing are welcome to join. Zoom ID: 820 3206 5745
- **Self-Care and Living in Balance:** Thursday, Aug. 19, 6 – 8 p.m. – Learn about the 7 Circles of Wellness, tips and tools on how to better live in balance. Zoom ID: 820 3206 5745

AUGUST 17 6:00 PM - 8:00 PM MOUNTAIN TIME

Men's  
Wellness  
Family &  
Community  
Roles  
Healing  
Journey

Men's  
Wellness

Family &  
Community  
Roles

Healing  
Journey

WWW.ZOOM.US MEETING ID: 820 3206 5745

## FOSTER PARENT INFORMATION MEETING



Photo credit: Robert L. Ortiz | The Southern Ute Drum

Wednesday, August 25th at 6pm

Are you curious about becoming a DSS Foster Parent? During this 45 min. webinar you will:

- Recognize the importance of keeping children with a foster family in the community to maintain familial, tribal, and cultural connections.
- Hear from a Foster Family about the impact that fostering has had on their lives.
- Have time to ask questions.
- Learn about the different options for fostering: emergency, respite, short or long term.
- **ENTER A DRAWING TO WIN a \$20 iTunes Gift card!!**

Register by email to [molsson@southernute-nsn.gov](mailto:molsson@southernute-nsn.gov) or call 970-563-2330 for more information



## The Southern Ute Health Center has updated all operational hours, until further notice.

### Updated Health Center Hours

NOTICE: As of June 1, 2021 the Southern Ute Health Center, including Pharmacy, Nursing and Dental will resume full work-day hours: 8 a.m. to 5 p.m. The Health Center will be closed for lunch break from 12 noon to 1 p.m.

### All PATIENTS ARE REQUIRED TO CALL AHEAD FOR APPOINTMENTS 970-563-4581.

- **SOUTHERN UTE HEALTH CENTER (CLINIC):** 8 a.m. to 5 p.m. daily. Closed 12 to 1 p.m. (Lunch)\*.
  - **COVID-19 TESTING:** Mon. to Fri., 8 a.m. to 5 p.m.
  - **LAB HOURS:** Mon. to Fri., 8 a.m. to 5 p.m.
  - **PHARMACY:** 8 a.m. to 5 p.m. daily. Only window service will be offered. No Pharmacy access from inside the clinic.
  - **NURSING VISITS:** 8 a.m. to 5 p.m. daily. Appointment only. NO WALK-INS!
- **DENTAL:** Mon., – Fri., 8 a.m. to 5 p.m.
- **OPTOMETRY:** Mon., and Wed. only, 8 a.m. to 5 p.m.
- **PSYCHIATRY:** Limited in-person visits; mostly via telehealth. Call to schedule an appointment.
- All **SPECIALTY MEDICINE:** In person at SUHC on select days. Call to schedule an appointment.
- All **BEHAVIORAL HEALTH:** Limited in-person visits; mostly via telehealth. Call to schedule an appointment.

\*The Southern Ute Health Center is closed on the first Thursday of every month from 1 to 5 p.m., for staff meetings, trainings and education.

For More Information  
Precious Collins  
[prcollins@southernute-nsn.gov](mailto:prcollins@southernute-nsn.gov)



Facilitated by the  
Native Wellness Institute



AUGUST 19 6:00 PM - 8:00 PM MOUNTAIN TIME

# SELF CARE & LIVING IN BALANCE



This two hour interactive session will include the 7 Circles of Wellness and tips and tools on how to better live in balance. Come ready to listen, learn, move and be inspired!

WWW.ZOOM.US MEETING ID: 820 3206 5745

For More Information  
Precious Collins  
[prcollins@southernute-nsn.gov](mailto:prcollins@southernute-nsn.gov)



Facilitated by the  
Native Wellness Institute



## SOUTHERN UTE POLICE DEPARTMENT

### SUBMIT A TIP

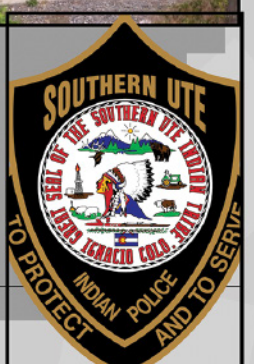


#### Anonymous Tip Submissions

Do you have information about a crime?

Please call the Southern Ute Police Department Anonymous Tip Line - (970) 563-4999. This "Tip Line" was designed to allow you the ability to provide law enforcement with information, anonymously if need be, regarding criminal, drug, or suspicious activity. The "Tip Line" is monitored around the clock by SUPD Investigators, but it DOES NOT replace 9-1-1 or the non-emergency police number (970) 563-4401.

If you prefer, you may also submit an anonymous tip online by visiting: <https://www.southernute-nsn.gov/justice-and-regulatory/supd>





SOCIAL SERVICES

# Tribe's foster care program searches for families

By McKayla Lee  
THE SOUTHERN UTE DRUM

The Southern Ute Indian Tribe's Division of Social Service's Foster Care Program is actively searching for more families to provide a safe and stable home environment for tribal children. The program currently only has two fully licensed foster care families who are serving the local community and youth.

Interested parties can begin the fostering process by completing the application, doing a home safety inspection, and interviewing with the program to determine eligibility. Background checks on all members in the household will be conducted as well as mandatory foster care training. Foster Families can be made up of anyone who is single, married or in a domestic partnership. They must be over 18 years of age, any gender, race/ethnic group, and any religion. They can be homeowners or renters with biological children in the home or not.

"We're kind of looking at tribal members first, because the most important thing for us is to keep families connected in the community – both with cultural and traditional values as well," Foster Care Program Coordinator, Morgan Olsson said.

The program currently offers three different types of fostering, there is the traditional, emergency and respite forms of care. Traditional care is when foster parents provide care and support for children until a permanent plan is implemented for family reunification. These families should expect to work directly with birth family members and child welfare professionals while also completing ongoing training requirements.

Emergency fostering is for children who enter tribal custody at any given time and day. This type of care is



McKayla Lee/SU Drum

The Southern Ute Indian Tribe's Division of Social Services Family Therapist, Angelina Whitehorse and DSS Foster Care Program Coordinator, Morgan Olsson stand together outside the Mouache Capote Building on Tribal Campus.

specific to caregivers who can provide short-term care for children placed in protective custody, usually up to 72 business hours, or until a relative/foster family placement can be found.

Just like any other parent, fostering parents need time to rest and recharge, respite care provides this short-term care. The care is usually offered during evenings or weekends; and is for children currently living with another foster family. As a respite caregiver this opportunity is a great way to see if full time foster parenting is right for you.

"We are looking to expand outwards to families in Durango and Bayfield – it all starts with a call to me," Olsson explained. "I want families to know that there is an option for everyone who has the heart to help, long and short-term placements are available."

Foster families play a fundamental role in meeting the developmental needs and well-being of youth. By offering a safe and nurturing home environment children can remain within the tribal community and stay connected to their cultures and tradition.

"We want to preserve and counsel with families before taking steps of removing children from the home," Southern Ute Division of Social Service's CSW, MSW Family Therapist, Angelina Whitehorse

stated. "My counseling is based on strength based, family centered, solution focused theories, to really help promote preservation, along with incorporating a lot of the traditional aspects that families value within the community."

As the family therapist, Whitehorse is responsible for counseling families and offering education that will support and strengthen those bonds from within. Families are encouraged to work with the family therapist to prevent children from out of home placement as well as working towards family crisis stabilization.

"Our work essentially never stops, it's 24 hour services – we as a division offer support and referrals to help foster parents and families whenever they need us," Whitehorse said. "We really want to keep children within their family systems, kin is very important to us, supporting them in terms of how to maneuver through the system, and really trying to keep the children out of the system and with that comes a lot of need for support within the community."

Potential DSS Foster Parents and Families are invited to the 'Foster Parent Webinar' which is scheduled for Wednesday, Aug. 25 at 6 p.m. Registration can be completed by email at [molsion@southernute-nsn.gov](mailto:molsion@southernute-nsn.gov) or by calling 970-563-2330 for general information.

DOMESTIC VIOLENCE AWARENESS

# True or false: Abuse against men

Staff report  
STRONGHEARTS NATIVE  
HELPLINE

There are many myths around intimate partner violence, particularly around victims who identify as men. Myths about violence are harmful. Myths keep people silent, add to shame and guilt, make people doubt the violence and can even perpetuate violence. The truth is anyone can be a victim of intimate partner violence.

**FALSE:** Abuse only happens to men who are in same-sex relationships.

**TRUE:** Abuse can happen to anyone. Abuse happens when one person uses a pattern of violent and coercive tactics to gain and keep power and control over another partner. Sexual orientation does not dictate abuse. Men can be abused by a person of any gender. 26 percent of gay men, 37 percent of bisexual men and 29 percent of heterosexual men have experienced physical violence, experienced rape and/or stalking by an intimate partner in their lifetime (Ncadv.Org, 2021).

**FALSE:** Men will always be mistaken as the abuser if they report the violence, and they won't be welcome at domestic violence shelters or programs.

**TRUE:** While women are more likely to be the victims of abuse than men, that is not always the case. When there is abuse in relationships between men and women, it is untrue that men are always the abusers.

It is well documented that there is a need for more Native-specific shelters throughout the country. However, many shelters house anyone who is a victim of violence, including men. Some shelters may provide accommodations for men outside of their traditional shelter, such as at an extended stay hotel. StrongHearts advocates can help male victim-survivors find a shelter that is safe for them and their dependent children.

**FALSE:** Men should just tough it out.

**TRUE:** This myth is particularly insidious as it de-

minimizes the violence and abuse, minimizes the real effects of violence and perpetuates harmful ideas about rigid gender roles.

Tribal gender roles were once as diverse as the Tribes and cultures themselves. During colonization, Native peoples' understanding of their place within their tribal community was disrupted and destroyed. Traditional gender roles were lost, harming future generations.

Predominant American culture teaches boys a harmful definition of masculinity. They are often taught to suppress their emotions and that controlling others is strength. This toxic messaging harms men who are experiencing intimate partner violence, as it discourages them from seeking the support they need and further makes them feel inadequate because of the abuse.

The impacts and experiences of violence are very real. In addition to physical harm, victims may experience depression, anxiety, disconnection from friends, family and themselves and post-traumatic stress disorder (PTSD) as a result of abuse. These impacts and experiences cannot just be toughed out.

**FALSE:** Native men are "wife-beaters."

**TRUE:** Native women experience a disproportionately high rate of violence; however, studies show most violence against Native women (and men) is not caused by Native men. Of all Native women who have experienced violence, 97 percent had an interracial perpetrator, meaning the violence was done by someone who is not Native. (National Institute of Justice, 2021).

Stereotypes like this are unfounded and racist. They harm Native women as much as Native men as it distracts from the reality of their situation and does nothing to address the root causes of violence against Native peoples.

**FALSE:** Men can't be abused. They are bigger, stronger, tougher.

**TRUE:** Untrue.

Men are abused. No matter someone's size or strength they can experience abuse. Intimate partner violence can take many

forms and men can experience physical abuse, emotional abuse, sexual abuse, financial abuse, digital abuse, and cultural abuse. Most people experience many if not all of the above forms of abuse.

- One in seven men report having experienced severe physical violence from an intimate partner in their lifetime (Cdc.Gov 2021).
- 38 million men (about twice the population of New York) have experienced psychological aggression by an intimate partner in their lifetime (Cdc.Gov 2021).
- One in 10 men have experienced rape, physical violence and/or stalking by an intimate partner (Cdc.Gov 2021).

Emotional abuse is the most common form of abuse reported to StrongHearts Native Helpline. Emotional abuse is intentional tactics that cause someone psychological, mental, or spiritual harm, especially as a means of control over that person. Emotional abuse against men can include:

- Questioning where they have been and questioning where they have been and with whom.
- Calling them names, belittling them.
- Enforcing unhealthy gender roles and expectations: saying they aren't man enough, shaming them if they are not the main financial contributor to the household, pressuring them into sexual activity to prove their manhood, etc.
- Constantly accusing them of cheating.
- Limiting their time with friends and relatives.

*StrongHearts Native Helpline is here for all Native Americans and Alaska Natives, whatever their gender or sexual identity. If you think you are being abused, StrongHearts can help. StrongHearts advocates take a Native-centered, empowerment-based approach to every contact. Services are anonymous and confidential. Call or text 1-844-7NATIVE (762-8483) or visit [strongheartshelpline.org](http://strongheartshelpline.org) for one-on-one chat advocacy 24/7.*



## RECOVERY TALKING CIRCLE

CONTACT MARVINA OLGUIN FOR ZOOM INFORMATION.

NEW LOCATION!!  
SOUTHERN UTE BEHAVIORAL HEALTH DIVISION  
NOW LOCATED: 4101 CR 222, DURANGO, CO

↓

**AUGUST 19, 2021**  
12 PM- 1 PM

**GOALS**

**AUGUST 26, 2021**  
12 PM- 1 PM

**DAMAGING CONSEQUENCES**

**SEPT. 2, 2021**  
12 PM- 1 PM

**RATIONAL THINKING RULES**

**HEALTHY MINDS. HEALTHY CHOICES.**  
**HEALTHY UTES.**

To sign up or for questions contact Marvina Olguin, Peer Recovery Coach @ 970-563-2359 or [marolguin@southernute-nsn.gov](mailto:marolguin@southernute-nsn.gov)

## SEXUAL ASSAULT VICTIM ADVOCATE 2021 FALL TRAINING



**SUPPORT SURVIVORS. BECOME AN ADVOCATE.**

**APPLY BY SEPT 1**

**TRAINING DATES:**

- SAT. 09/18 9-4\*
- WED. 09/22 4:30-8 PM\*
- THURS. 09/23 4:30-8 PM\*
- SAT. 09/25 9-4 \*
- WED. 09/29 4:30-8 PM\*
- THURS. 09/30 4:30-8 PM\*

\*Times subject to change

THIS FREE 30-HOUR TRAINING CERTIFIES YOU AS A VICTIM ADVOCATE IN THE STATE OF CO

Applications may be found at [durangosaso.org](http://durangosaso.org)

Contact Emily, Volunteer Coordinator, at [emily@durangosaso.org](mailto:emily@durangosaso.org) for more information.

## BACK TO SCHOOL

### AND Meet-Your-Teacher party

**Music, Bounce Houses, Food Truck, Sno Cones, and More!**

**Wednesday AUGUST 25TH**

**4:30 PM • 7:00 PM**

**Ignacio Elementary and Middle Schools**

Sponsored by:  
**Ignacio ISD and Ignacio Multicultural Committee**

## SUIIMA From the Eagle's Nest

*We are back!*

**Staff report**  
SOUTHERN UTE INDIAN  
MONTESSORI ACADEMY

The staff of the Southern Ute Indian Montessori Academy is so excited to have the students returning to the campus! On August 30, 2021, the staff will be greeting each child with a big smile and a non-touch thermometer!

School supply lists can be found on our administrative door, on our website [www.suima.org](http://www.suima.org), in the Walmart Back-to-School supply Kiosk, and right here in The Southern Ute Drum newspaper.

Our Open House will take place on August 26, 2021. Information will be sent out prior to the date.

We look forward to a year of renewed learning, friendships, and academic fun!



Mari Jo Owens/SU Drum

This buck is awaiting the arrival of the SUIIMA students.

## JOM SCHOOL SUPPLY DISTRIBUTION

**DATES: AUGUST 2021 SCHOOL YEAR**  
**AUGUST 19 & 20 (BAYFIELD STUDENTS ONLY)**  
**AUGUST 23, 24, & 25 (IGNACIO STUDENTS ONLY)**

**TIME: 10AM-3PM**

**LOCATION: SOUTHERN UTE EDUCATION DEPARTMENT**

**ELIGIBILITY:** Students must be registered with the JOM program. You will need to show proof that you are ¼ Indian blood with either your Certificate of Indian Blood (CIB) or your birth certificate AND your parent's CIB (to show blood lineage).  
Must be age 3 to 18, attend the Ignacio or Bayfield School District(s)  
\*\*\*PLEASE call ahead with the following information: child(s) name, grade level, and name of school.

FOR MORE INFORMATION CONTACT: ELLEN S. BAKER AT (970)563-0235

### Southern Ute Indian Montessori Academy School Supply List 2021-2022

**Infant/Toddler Supply List**

- 1 – Box of jumbo crayons
- 1 – Watercolor paint
- 1 – Small pack of glue sticks
- 1 – 4 oz. bottle of Elmer's white glue
- 1 – 3-ring binder with page protectors
- 1 – Sidewalk chalk
- 1 – Package of multicolor cardstock
- 1 – Bubbles
- 1 – Small bottle of hand sanitizer
- 1 – 3-pack of tissues
- 1 – Child sized water bottle (NO sippy cups)

**Primary Supply List**

- 1 – Box of 8 count Crayola crayons
- 1 – Box of Crayola washable markers
- 1 – Box of 12 count Crayola colored pencils
- 1 – Watercolor paint
- 1 – 6 pack of glue sticks
- 1 – 4 oz. bottle of Elmer's white glue
- 1 – Pencil box
- 1 – Box of small chalk
- 1 – Package of multicolor cardstock
- 1 – Package of white cardstock
- 1 – Small bottle of hand sanitizer
- 1 – Box of Kleenex
- 1 – Child sized water bottle
- 1 – Plain white tee shirt
- 1 – 3-pack of Clorox wipes

**Lower Elementary Supply List**

- 1 – Bottle of Elmer's white glue
- 6 – Glue sticks (preferably NOT gel)
- 1 – Box of Crayola markers
- 1 – Box of Crayola colored pencils
- 1 – Box of Crayola crayons
- 1 – Watercolor paint
- 1 – Package of white cardstock
- 1 – Pair of fiskar scissors
- 1 – Pencil box
- 1 – Pencil sharpener (catches shavings)
- 1 – 3-ring binder
- 1 – Composition notebook
- 1 – Pair of headphones
- 1 – Small bottle of hand sanitizer
- 1 – Box of Kleenex tissues
- 1 – Personal water bottle
- 1 – Container of Clorox wipes

**Upper Elementary Supply List**

- 3 – Wide ruled composition notebooks
- 4 – Pocket folders without prongs inside
- 1 – Package of 8-tab dividers
- 1 – Box of 24 count Crayola crayons
- 1 – Box of Crayola markers
- 1 – Pack of thin/fine point dry erase markers
- 1 – Box of Crayola colored pencils
- 1 – Package of wide ruled writing paper
- 1 – 1-inch binder
- 1 – Package of rectangle pink erasers
- 2 – Packages of 4 count glue sticks
- 1 – Small bottle of Elmer's glue
- 1 – Container of Clorox wipes

### IGNACIO SCHOOL DISTRICT 2021-2022 SCHOOL CALENDAR

Wednesday are Early Release Days (2:05 P.M.)

<p>4 Independence Day 5 Independence Day Observed</p> <p><b>JULY 2021</b></p> <table border="1"> <tr><td>S</td><td>M</td><td>T</td><td>W</td><td>Th</td><td>F</td><td>S</td></tr> <tr><td></td><td></td><td></td><td>1</td><td>2</td><td>3</td><td></td></tr> <tr><td>4</td><td>5</td><td>6</td><td>7</td><td>8</td><td>9</td><td>10</td></tr> <tr><td>11</td><td>12</td><td>13</td><td>14</td><td>15</td><td>16</td><td>17</td></tr> <tr><td>18</td><td>19</td><td>20</td><td>21</td><td>22</td><td>23</td><td>24</td></tr> <tr><td>25</td><td>26</td><td>27</td><td>28</td><td>29</td><td>30</td><td>31</td></tr> </table>	S	M	T	W	Th	F	S				1	2	3		4	5	6	7	8	9	10	11	12	13	14	15	16	17	18	19	20	21	22	23	24	25	26	27	28	29	30	31	<p>3 Back to School 17 NO SCHOOL ML King Jr Day 19 End of 1<sup>st</sup> Semester (83 days)</p> <p><b>JANUARY 2022</b></p> <table border="1"> <tr><td>S</td><td>M</td><td>T</td><td>W</td><td>Th</td><td>F</td><td>S</td></tr> <tr><td></td><td></td><td></td><td></td><td></td><td></td><td>1</td></tr> <tr><td>2</td><td>3</td><td>4</td><td>5</td><td>6</td><td>7</td><td>8</td></tr> <tr><td>9</td><td>10</td><td>11</td><td>12</td><td>13</td><td>14</td><td>15</td></tr> <tr><td>16</td><td>17</td><td>18</td><td>19</td><td>20</td><td>21</td><td>22</td></tr> <tr><td>23</td><td>24</td><td>25</td><td>26</td><td>27</td><td>28</td><td>29</td></tr> <tr><td>30</td><td>31</td><td></td><td></td><td></td><td></td><td></td></tr> </table>	S	M	T	W	Th	F	S							1	2	3	4	5	6	7	8	9	10	11	12	13	14	15	16	17	18	19	20	21	22	23	24	25	26	27	28	29	30	31												
S	M	T	W	Th	F	S																																																																																													
			1	2	3																																																																																														
4	5	6	7	8	9	10																																																																																													
11	12	13	14	15	16	17																																																																																													
18	19	20	21	22	23	24																																																																																													
25	26	27	28	29	30	31																																																																																													
S	M	T	W	Th	F	S																																																																																													
						1																																																																																													
2	3	4	5	6	7	8																																																																																													
9	10	11	12	13	14	15																																																																																													
16	17	18	19	20	21	22																																																																																													
23	24	25	26	27	28	29																																																																																													
30	31																																																																																																		
<p>20 New Staff In Service 23-27 Staff In-Service 30 School Starts</p> <p><b>AUGUST 2021</b></p> <table border="1"> <tr><td>S</td><td>M</td><td>T</td><td>W</td><td>Th</td><td>F</td><td>S</td></tr> <tr><td></td><td></td><td></td><td>1</td><td>2</td><td>3</td><td></td></tr> <tr><td>4</td><td>5</td><td>6</td><td>7</td><td>8</td><td>9</td><td>10</td></tr> <tr><td>11</td><td>12</td><td>13</td><td>14</td><td>15</td><td>16</td><td>17</td></tr> <tr><td>18</td><td>19</td><td>20</td><td>21</td><td>22</td><td>23</td><td>24</td></tr> <tr><td>25</td><td>26</td><td>27</td><td>28</td><td>29</td><td>30</td><td>31</td></tr> </table>	S	M	T	W	Th	F	S				1	2	3		4	5	6	7	8	9	10	11	12	13	14	15	16	17	18	19	20	21	22	23	24	25	26	27	28	29	30	31	<p>14-17 Parent/Teacher Conferences 18 NO SCHOOL in Lieu of P/Conf 21 NO SCHOOL President's Day</p> <p><b>FEBRUARY 2022</b></p> <table border="1"> <tr><td>S</td><td>M</td><td>T</td><td>W</td><td>Th</td><td>F</td><td>S</td></tr> <tr><td></td><td></td><td></td><td>1</td><td>2</td><td>3</td><td>4</td></tr> <tr><td>5</td><td>6</td><td>7</td><td>8</td><td>9</td><td>10</td><td>11</td></tr> <tr><td>12</td><td>13</td><td>14</td><td>15</td><td>16</td><td>17</td><td>18</td></tr> <tr><td>19</td><td>20</td><td>21</td><td>22</td><td>23</td><td>24</td><td>25</td></tr> <tr><td>26</td><td>27</td><td>28</td><td>29</td><td>30</td><td>31</td><td></td></tr> </table>	S	M	T	W	Th	F	S				1	2	3	4	5	6	7	8	9	10	11	12	13	14	15	16	17	18	19	20	21	22	23	24	25	26	27	28	29	30	31															
S	M	T	W	Th	F	S																																																																																													
			1	2	3																																																																																														
4	5	6	7	8	9	10																																																																																													
11	12	13	14	15	16	17																																																																																													
18	19	20	21	22	23	24																																																																																													
25	26	27	28	29	30	31																																																																																													
S	M	T	W	Th	F	S																																																																																													
			1	2	3	4																																																																																													
5	6	7	8	9	10	11																																																																																													
12	13	14	15	16	17	18																																																																																													
19	20	21	22	23	24	25																																																																																													
26	27	28	29	30	31																																																																																														
<p>6 NO SCHOOL Labor Day</p> <p><b>SEPTEMBER 2021</b></p> <table border="1"> <tr><td>S</td><td>M</td><td>T</td><td>W</td><td>Th</td><td>F</td><td>S</td></tr> <tr><td></td><td></td><td></td><td></td><td></td><td></td><td>1</td></tr> <tr><td>2</td><td>3</td><td>4</td><td>5</td><td>6</td><td>7</td><td>8</td></tr> <tr><td>9</td><td>10</td><td>11</td><td>12</td><td>13</td><td>14</td><td>15</td></tr> <tr><td>16</td><td>17</td><td>18</td><td>19</td><td>20</td><td>21</td><td>22</td></tr> <tr><td>23</td><td>24</td><td>25</td><td>26</td><td>27</td><td>28</td><td>29</td></tr> <tr><td>30</td><td>31</td><td></td><td></td><td></td><td></td><td></td></tr> </table>	S	M	T	W	Th	F	S							1	2	3	4	5	6	7	8	9	10	11	12	13	14	15	16	17	18	19	20	21	22	23	24	25	26	27	28	29	30	31						<p>2 End of 2nd Trimester (56 days) 29 End of 3<sup>rd</sup> Quarter (42 days)</p> <p><b>MARCH 2022</b></p> <table border="1"> <tr><td>S</td><td>M</td><td>T</td><td>W</td><td>Th</td><td>F</td><td>S</td></tr> <tr><td></td><td></td><td></td><td></td><td></td><td></td><td>1</td></tr> <tr><td>2</td><td>3</td><td>4</td><td>5</td><td>6</td><td>7</td><td>8</td></tr> <tr><td>9</td><td>10</td><td>11</td><td>12</td><td>13</td><td>14</td><td>15</td></tr> <tr><td>16</td><td>17</td><td>18</td><td>19</td><td>20</td><td>21</td><td>22</td></tr> <tr><td>23</td><td>24</td><td>25</td><td>26</td><td>27</td><td>28</td><td>29</td></tr> <tr><td>30</td><td>31</td><td></td><td></td><td></td><td></td><td></td></tr> </table>	S	M	T	W	Th	F	S							1	2	3	4	5	6	7	8	9	10	11	12	13	14	15	16	17	18	19	20	21	22	23	24	25	26	27	28	29	30	31					
S	M	T	W	Th	F	S																																																																																													
						1																																																																																													
2	3	4	5	6	7	8																																																																																													
9	10	11	12	13	14	15																																																																																													
16	17	18	19	20	21	22																																																																																													
23	24	25	26	27	28	29																																																																																													
30	31																																																																																																		
S	M	T	W	Th	F	S																																																																																													
						1																																																																																													
2	3	4	5	6	7	8																																																																																													
9	10	11	12	13	14	15																																																																																													
16	17	18	19	20	21	22																																																																																													
23	24	25	26	27	28	29																																																																																													
30	31																																																																																																		
<p>25-28 Parent/Teacher Conferences 26 End of First Quarter (41 days) 29 NO SCHOOL in lieu of P/Conf</p> <p><b>OCTOBER 2021</b></p> <table border="1"> <tr><td>S</td><td>M</td><td>T</td><td>W</td><td>Th</td><td>F</td><td>S</td></tr> <tr><td></td><td></td><td></td><td></td><td></td><td></td><td>1</td></tr> <tr><td>2</td><td>3</td><td>4</td><td>5</td><td>6</td><td>7</td><td>8</td></tr> <tr><td>9</td><td>10</td><td>11</td><td>12</td><td>13</td><td>14</td><td>15</td></tr> <tr><td>16</td><td>17</td><td>18</td><td>19</td><td>20</td><td>21</td><td>22</td></tr> <tr><td>23</td><td>24</td><td>25</td><td>26</td><td>27</td><td>28</td><td>29</td></tr> <tr><td>30</td><td>31</td><td></td><td></td><td></td><td></td><td></td></tr> </table>	S	M	T	W	Th	F	S							1	2	3	4	5	6	7	8	9	10	11	12	13	14	15	16	17	18	19	20	21	22	23	24	25	26	27	28	29	30	31						<p>26 Students Last Day 27 Staff Last Day 28 Graduation 30 Memorial Day</p> <p><b>MAY 2022</b></p> <table border="1"> <tr><td>S</td><td>M</td><td>T</td><td>W</td><td>Th</td><td>F</td><td>S</td></tr> <tr><td></td><td></td><td></td><td></td><td></td><td></td><td>1</td></tr> <tr><td>2</td><td>3</td><td>4</td><td>5</td><td>6</td><td>7</td><td>8</td></tr> <tr><td>9</td><td>10</td><td>11</td><td>12</td><td>13</td><td>14</td><td>15</td></tr> <tr><td>16</td><td>17</td><td>18</td><td>19</td><td>20</td><td>21</td><td>22</td></tr> <tr><td>23</td><td>24</td><td>25</td><td>26</td><td>27</td><td>28</td><td>29</td></tr> <tr><td>30</td><td>31</td><td></td><td></td><td></td><td></td><td></td></tr> </table>	S	M	T	W	Th	F	S							1	2	3	4	5	6	7	8	9	10	11	12	13	14	15	16	17	18	19	20	21	22	23	24	25	26	27	28	29	30	31					
S	M	T	W	Th	F	S																																																																																													
						1																																																																																													
2	3	4	5	6	7	8																																																																																													
9	10	11	12	13	14	15																																																																																													
16	17	18	19	20	21	22																																																																																													
23	24	25	26	27	28	29																																																																																													
30	31																																																																																																		
S	M	T	W	Th	F	S																																																																																													
						1																																																																																													
2	3	4	5	6	7	8																																																																																													
9	10	11	12	13	14	15																																																																																													
16	17	18	19	20	21	22																																																																																													
23	24	25	26	27	28	29																																																																																													
30	31																																																																																																		
<p>10 NO SCHOOL Leonard C Burch Day 20-31 Christmas Break</p> <p><b>DECEMBER 2021</b></p> <table border="1"> <tr><td>S</td><td>M</td><td>T</td><td>W</td><td>Th</td><td>F</td><td>S</td></tr> <tr><td></td><td></td><td></td><td></td><td></td><td></td><td>1</td></tr> <tr><td>2</td><td>3</td><td>4</td><td>5</td><td>6</td><td>7</td><td>8</td></tr> <tr><td>9</td><td>10</td><td>11</td><td>12</td><td>13</td><td>14</td><td>15</td></tr> <tr><td>16</td><td>17</td><td>18</td><td>19</td><td>20</td><td>21</td><td>22</td></tr> <tr><td>23</td><td>24</td><td>25</td><td>26</td><td>27</td><td>28</td><td>29</td></tr> <tr><td>30</td><td>31</td><td></td><td></td><td></td><td></td><td></td></tr> </table>	S	M	T	W	Th	F	S							1	2	3	4	5	6	7	8	9	10	11	12	13	14	15	16	17	18	19	20	21	22	23	24	25	26	27	28	29	30	31						<p>Total Student Days - 167 Total Teacher Days - 175</p> <p><b>JUNE 2022</b></p> <table border="1"> <tr><td>S</td><td>M</td><td>T</td><td>W</td><td>Th</td><td>F</td><td>S</td></tr> <tr><td></td><td></td><td></td><td></td><td></td><td></td><td>1</td></tr> <tr><td>2</td><td>3</td><td>4</td><td>5</td><td>6</td><td>7</td><td>8</td></tr> <tr><td>9</td><td>10</td><td>11</td><td>12</td><td>13</td><td>14</td><td>15</td></tr> <tr><td>16</td><td>17</td><td>18</td><td>19</td><td>20</td><td>21</td><td>22</td></tr> <tr><td>23</td><td>24</td><td>25</td><td>26</td><td>27</td><td>28</td><td>29</td></tr> <tr><td>30</td><td>31</td><td></td><td></td><td></td><td></td><td></td></tr> </table>	S	M	T	W	Th	F	S							1	2	3	4	5	6	7	8	9	10	11	12	13	14	15	16	17	18	19	20	21	22	23	24	25	26	27	28	29	30	31					
S	M	T	W	Th	F	S																																																																																													
						1																																																																																													
2	3	4	5	6	7	8																																																																																													
9	10	11	12	13	14	15																																																																																													
16	17	18	19	20	21	22																																																																																													
23	24	25	26	27	28	29																																																																																													
30	31																																																																																																		
S	M	T	W	Th	F	S																																																																																													
						1																																																																																													
2	3	4	5	6	7	8																																																																																													
9	10	11	12	13	14	15																																																																																													
16	17	18	19	20	21	22																																																																																													
23	24	25	26	27	28	29																																																																																													
30	31																																																																																																		

Adopted: January 14, 2021

### SOUTHERN UTE MONTESSORI ACADEMY

**2021-2022 School Calendar**

275 Mouache Circle, P.O. Box 737 ms52  
Ignacio, CO 81137  
Phone: (970) 563-0253 Fax: (970) 563-3695

<p><b>August 2021</b></p> <table border="1"> <tr><td>S</td><td>M</td><td>T</td><td>W</td><td>Th</td><td>F</td><td>S</td></tr> <tr><td>1</td><td>2</td><td>3</td><td>4</td><td>5</td><td>6</td><td>7</td></tr> <tr><td>8</td><td>9</td><td>10</td><td>11</td><td>12</td><td>13</td><td>14</td></tr> <tr><td>15</td><td>16</td><td>17</td><td>18</td><td>19</td><td>20</td><td>21</td></tr> <tr><td>22</td><td>23</td><td>24</td><td>25</td><td>26</td><td>27</td><td>28</td></tr> <tr><td>29</td><td>30</td><td>31</td><td></td><td></td><td></td><td></td></tr> </table>	S	M	T	W	Th	F	S	1	2	3	4	5	6	7	8	9	10	11	12	13	14	15	16	17	18	19	20	21	22	23	24	25	26	27	28	29	30	31					<p><b>September 2021</b></p> <table border="1"> <tr><td>S</td><td>M</td><td>T</td><td>W</td><td>Th</td><td>F</td><td>S</td></tr> <tr><td></td><td></td><td></td><td></td><td></td><td></td><td>1</td></tr> <tr><td>2</td><td>3</td><td>4</td><td>5</td><td>6</td><td>7</td><td>8</td></tr> <tr><td>9</td><td>10</td><td>11</td><td>12</td><td>13</td><td>14</td><td>15</td></tr> <tr><td>16</td><td>17</td><td>18</td><td>19</td><td>20</td><td>21</td><td>22</td></tr> <tr><td>23</td><td>24</td><td>25</td><td>26</td><td>27</td><td>28</td><td>29</td></tr> <tr><td>30</td><td>31</td><td></td><td></td><td></td><td></td><td></td></tr> </table>	S	M	T	W	Th	F	S							1	2	3	4	5	6	7	8	9	10	11	12	13	14	15	16	17	18	19	20	21	22	23	24	25	26	27	28	29	30	31						<p><b>October 2021</b></p> <table border="1"> <tr><td>S</td><td>M</td><td>T</td><td>W</td><td>Th</td><td>F</td><td>S</td></tr> <tr><td></td><td></td><td></td><td></td><td></td><td></td><td>1</td></tr> <tr><td>2</td><td>3</td><td>4</td><td>5</td><td>6</td><td>7</td><td>8</td></tr> <tr><td>9</td><td>10</td><td>11</td><td>12</td><td>13</td><td>14</td><td>15</td></tr> <tr><td>16</td><td>17</td><td>18</td><td>19</td><td>20</td><td>21</td><td>22</td></tr> <tr><td>23</td><td>24</td><td>25</td><td>26</td><td>27</td><td>28</td><td>29</td></tr> <tr><td>30</td><td>31</td><td></td><td></td><td></td><td></td><td></td></tr> </table>	S	M	T	W	Th	F	S							1	2	3	4	5	6	7	8	9	10	11	12	13	14	15	16	17	18	19	20	21	22	23	24	25	26	27	28	29	30	31						<p><b>November 2021</b></p> <table border="1"> <tr><td>S</td><td>M</td><td>T</td><td>W</td><td>Th</td><td>F</td><td>S</td></tr> <tr><td></td><td></td><td></td><td></td><td></td><td></td><td>1</td></tr> <tr><td>2</td><td>3</td><td>4</td><td>5</td><td>6</td><td>7</td><td>8</td></tr> <tr><td>9</td><td>10</td><td>11</td><td>12</td><td>13</td><td>14</td><td>15</td></tr> <tr><td>16</td><td>17</td><td>18</td><td>19</td><td>20</td><td>21</td><td>22</td></tr> <tr><td>23</td><td>24</td><td>25</td><td>26</td><td>27</td><td>28</td><td>29</td></tr> <tr><td>30</td><td>31</td><td></td><td></td><td></td><td></td><td></td></tr> </table>	S	M	T	W	Th	F	S							1	2	3	4	5	6	7	8	9	10	11	12	13	14	15	16	17	18	19	20	21	22	23	24	25	26	27	28	29	30	31						<p><b>December 2021</b></p> <table border="1"> <tr><td>S</td><td>M</td><td>T</td><td>W</td><td>Th</td><td>F</td><td>S</td></tr> <tr><td></td><td></td><td></td><td></td><td></td><td></td><td>1</td></tr> <tr><td>2</td><td>3</td><td>4</td><td>5</td><td>6</td><td>7</td><td>8</td></tr> <tr><td>9</td><td>10</td><td>11</td><td>12</td><td>13</td><td>14</td><td>15</td></tr> <tr><td>16</td><td>17</td><td>18</td><td>19</td><td>20</td><td>21</td><td>22</td></tr> <tr><td>23</td><td>24</td><td>25</td><td>26</td><td>27</td><td>28</td><td>29</td></tr> <tr><td>30</td><td>31</td><td></td><td></td><td></td><td></td><td></td></tr> </table>	S	M	T	W	Th	F	S							1	2	3	4	5	6	7	8	9	10	11	12	13	14	15	16	17	18	19	20	21	22	23	24	25	26	27	28	29	30	31						<p><b>January 2022</b></p> <table border="1"> <tr><td>S</td><td>M</td><td>T</td><td>W</td><td>Th</td><td>F</td><td>S</td></tr> <tr><td></td><td></td><td></td><td></td><td></td><td></td><td>1</td></tr> <tr><td>2</td><td>3</td><td>4</td><td>5</td><td>6</td><td>7</td><td>8</td></tr> <tr><td>9</td><td>10</td><td>11</td><td>12</td><td>13</td><td>14</td><td>15</td></tr> <tr><td>16</td><td>17</td><td>18</td><td>19</td><td>20</td><td>21</td><td>22</td></tr> <tr><td>23</td><td>24</td><td>25</td><td>26</td><td>27</td><td>28</td><td>29</td></tr> <tr><td>30</td><td>31</td><td></td><td></td><td></td><td></td><td></td></tr> </table>	S	M	T	W	Th	F	S							1	2	3	4	5	6	7	8	9	10	11	12	13	14	15	16	17	18	19	20	21	22	23	24	25	26	27	28	29	30	31						<p><b>February 2022</b></p> <table border="1"> <tr><td>S</td><td>M</td><td>T</td><td>W</td><td>Th</td><td>F</td><td>S</td></tr> <tr><td></td><td></td><td></td><td></td><td></td><td></td><td>1</td></tr> <tr><td>2</td><td>3</td><td>4</td><td>5</td><td>6</td><td>7</td><td>8</td></tr> <tr><td>9</td><td>10</td><td>11</td><td>12</td><td>13</td><td>14</td><td>15</td></tr> <tr><td>16</td><td>17</td><td>18</td><td>19</td><td>20</td><td>21</td><td>22</td></tr> <tr><td>23</td><td>24</td><td>25</td><td>26</td><td>27</td><td>28</td><td>29</td></tr> <tr><td>30</td><td>31</td><td></td><td></td><td></td><td></td><td></td></tr> </table>	S	M	T	W	Th	F	S							1	2	3	4	5	6	7	8	9	10	11	12	13	14	15	16	17	18	19	20	21	22	23	24	25	26	27	28	29	30	31						<p><b>March 2022</b></p> <table border="1"> <tr><td>S</td><td>M</td><td>T</td><td>W</td><td>Th</td><td>F</td><td>S</td></tr> <tr><td></td><td></td><td></td><td></td><td></td><td></td><td>1</td></tr> <tr><td>2</td><td>3</td><td>4</td><td>5</td><td>6</td><td>7</td><td>8</td></tr> <tr><td>9</td><td>10</td><td>11</td><td>12</td><td>13</td><td>14</td><td>15</td></tr> <tr><td>16</td><td>17</td><td>18</td><td>19</td><td>20</td><td>21</td><td>22</td></tr> <tr><td>23</td><td>24</td><td>25</td><td>26</td><td>27</td><td>28</td><td>29</td></tr> <tr><td>30</td><td>31</td><td></td><td></td><td></td><td></td><td></td></tr> </table>	S	M	T	W	Th	F	S							1	2	3	4	5	6	7	8	9	10	11	12	13	14	15	16	17	18	19	20	21	22	23	24	25	26	27	28	29	30	31						<p><b>April 2022</b></p> <table border="1"> <tr><td>S</td><td>M</td><td>T</td><td>W</td><td>Th</td><td>F</td><td>S</td></tr> <tr><td></td><td></td><td></td><td></td><td></td><td></td><td>1</td></tr> <tr><td>2</td><td>3</td><td>4</td><td>5</td><td>6</td><td>7</td><td>8</td></tr> <tr><td>9</td><td>10</td><td>11</td><td>12</td><td>13</td><td>14</td><td>15</td></tr> <tr><td>16</td><td>17</td><td>18</td><td>19</td><td>20</td><td>21</td><td>22</td></tr> <tr><td>23</td><td>24</td><td>25</td><td>26</td><td>27</td><td>28</td><td>29</td></tr> <tr><td>30</td><td>31</td><td></td><td></td><td></td><td></td><td></td></tr> </table>	S	M	T	W	Th	F	S							1	2	3	4	5	6	7	8	9	10	11	12	13	14	15	16	17	18	19	20	21	22	23	24	25	26	27	28	29	30	31						<p><b>May 2022</b></p> <table border="1"> <tr><td>S</td><td>M</td><td>T</td><td>W</td><td>Th</td><td>F</td><td>S</td></tr> <tr><td></td><td></td><td></td><td></td><td></td><td></td><td>1</td></tr> <tr><td>2</td><td>3</td><td>4</td><td>5</td><td>6</td><td>7</td><td>8</td></tr> <tr><td>9</td><td>10</td><td>11</td><td>12</td><td>13</td><td>14</td><td>15</td></tr> <tr><td>16</td><td>17</td><td>18</td><td>19</td><td>20</td><td>21</td><td>22</td></tr> <tr><td>23</td><td>24</td><td>25</td><td>26</td><td>27</td><td>28</td><td>29</td></tr> <tr><td>30</td><td>31</td><td></td><td></td><td></td><td></td><td></td></tr> </table>	S	M	T	W	Th	F	S							1	2	3	4	5	6	7	8	9	10	11	12	13	14	15	16	17	18	19	20	21	22	23	24	25	26	27	28	29	30	31						<p><b>June 2022</b></p> <table border="1"> <tr><td>S</td><td>M</td><td>T</td><td>W</td><td>Th</td><td>F</td><td>S</td></tr> <tr><td></td><td></td><td></td><td></td><td></td><td></td><td>1</td></tr> <tr><td>2</td><td>3</td><td>4</td><td>5</td><td>6</td><td>7</td><td>8</td></tr> <tr><td>9</td><td>10</td><td>11</td><td>12</td><td>13</td><td>14</td><td>15</td></tr> <tr><td>16</td><td>17</td><td>18</td><td>19</td><td>20</td><td>21</td><td>22</td></tr> <tr><td>23</td><td>24</td><td>25</td><td>26</td><td>27</td><td>28</td><td>29</td></tr> <tr><td>30</td><td>31</td><td></td><td></td><td></td><td></td><td></td></tr> </table>	S	M	T	W	Th	F	S							1	2	3	4	5	6	7	8	9	10	11	12	13	14	15	16	17	18	19	20	21	22	23	24	25	26	27	28	29	30	31						<p><b>July 2022</b></p> <table border="1"> <tr><td>S</td><td>M</td><td>T</td><td>W</td><td>Th</td><td>F</td><td>S</td></tr> <tr><td></td><td></td><td></td><td></td><td></td><td></td><td>1</td></tr> <tr><td>2</td><td>3</td><td>4</td><td>5</td><td>6</td><td>7</td><td>8</td></tr> <tr><td>9</td><td>10</td><td>11</td><td>12</td><td>13</td><td>14</td><td>15</td></tr> <tr><td>16</td><td>17</td><td>18</td><td>19</td><td>20</td><td>21</td><td>22</td></tr> <tr><td>23</td><td>24</td><td>25</td><td>26</td><td>27</td><td>28</td><td>29</td></tr> <tr><td>30</td><td>31</td><td></td><td></td><td></td><td></td><td></td></tr> </table>	S	M	T	W	Th	F	S							1	2	3	4	5	6	7	8	9	10	11	12	13	14	15	16	17	18	19	20	21	22	23	24	25	26	27	28	29	30	31					
S	M	T	W	Th	F	S																																																																																																																																																																																																																																																																																																																																																																																																																																																																																																																																																																																																										
1	2	3	4	5	6	7																																																																																																																																																																																																																																																																																																																																																																																																																																																																																																																																																																																																										
8	9	10	11	12	13	14																																																																																																																																																																																																																																																																																																																																																																																																																																																																																																																																																																																																										
15	16	17	18	19	20	21																																																																																																																																																																																																																																																																																																																																																																																																																																																																																																																																																																																																										
22	23	24	25	26	27	28																																																																																																																																																																																																																																																																																																																																																																																																																																																																																																																																																																																																										
29	30	31																																																																																																																																																																																																																																																																																																																																																																																																																																																																																																																																																																																																														
S	M	T	W	Th	F	S																																																																																																																																																																																																																																																																																																																																																																																																																																																																																																																																																																																																										
						1																																																																																																																																																																																																																																																																																																																																																																																																																																																																																																																																																																																																										
2	3	4	5	6	7	8																																																																																																																																																																																																																																																																																																																																																																																																																																																																																																																																																																																																										
9	10	11	12	13	14	15																																																																																																																																																																																																																																																																																																																																																																																																																																																																																																																																																																																																										
16	17	18	19	20	21	22																																																																																																																																																																																																																																																																																																																																																																																																																																																																																																																																																																																																										
23	24	25	26	27	28	29																																																																																																																																																																																																																																																																																																																																																																																																																																																																																																																																																																																																										
30	31																																																																																																																																																																																																																																																																																																																																																																																																																																																																																																																																																																																																															
S	M	T	W	Th	F	S																																																																																																																																																																																																																																																																																																																																																																																																																																																																																																																																																																																																										
						1																																																																																																																																																																																																																																																																																																																																																																																																																																																																																																																																																																																																										
2	3	4	5	6	7	8																																																																																																																																																																																																																																																																																																																																																																																																																																																																																																																																																																																																										
9	10	11	12	13	14	15																																																																																																																																																																																																																																																																																																																																																																																																																																																																																																																																																																																																										
16	17	18	19	20	21	22																																																																																																																																																																																																																																																																																																																																																																																																																																																																																																																																																																																																										
23	24	25	26	27	28	29																																																																																																																																																																																																																																																																																																																																																																																																																																																																																																																																																																																																										
30	31																																																																																																																																																																																																																																																																																																																																																																																																																																																																																																																																																																																																															
S	M	T	W	Th	F	S																																																																																																																																																																																																																																																																																																																																																																																																																																																																																																																																																																																																										
						1																																																																																																																																																																																																																																																																																																																																																																																																																																																																																																																																																																																																										
2	3	4	5	6	7	8																																																																																																																																																																																																																																																																																																																																																																																																																																																																																																																																																																																																										
9	10	11	12	13	14	15																																																																																																																																																																																																																																																																																																																																																																																																																																																																																																																																																																																																										
16	17	18	19	20	21	22																																																																																																																																																																																																																																																																																																																																																																																																																																																																																																																																																																																																										
23	24	25	26	27	28	29																																																																																																																																																																																																																																																																																																																																																																																																																																																																																																																																																																																																										
30	31																																																																																																																																																																																																																																																																																																																																																																																																																																																																																																																																																																																																															
S	M	T	W	Th	F	S																																																																																																																																																																																																																																																																																																																																																																																																																																																																																																																																																																																																										
						1																																																																																																																																																																																																																																																																																																																																																																																																																																																																																																																																																																																																										
2	3	4	5	6	7	8																																																																																																																																																																																																																																																																																																																																																																																																																																																																																																																																																																																																										
9	10	11	12	13	14	15																																																																																																																																																																																																																																																																																																																																																																																																																																																																																																																																																																																																										
16	17	18	19	20	21	22																																																																																																																																																																																																																																																																																																																																																																																																																																																																																																																																																																																																										
23	24	25	26	27	28	29																																																																																																																																																																																																																																																																																																																																																																																																																																																																																																																																																																																																										
30	31																																																																																																																																																																																																																																																																																																																																																																																																																																																																																																																																																																																																															
S	M	T	W	Th	F	S																																																																																																																																																																																																																																																																																																																																																																																																																																																																																																																																																																																																										
						1																																																																																																																																																																																																																																																																																																																																																																																																																																																																																																																																																																																																										
2	3	4	5	6	7	8																																																																																																																																																																																																																																																																																																																																																																																																																																																																																																																																																																																																										
9	10	11	12	13	14	15																																																																																																																																																																																																																																																																																																																																																																																																																																																																																																																																																																																																										
16	17	18	19	20	21	22																																																																																																																																																																																																																																																																																																																																																																																																																																																																																																																																																																																																										
23	24	25	26	27	28	29																																																																																																																																																																																																																																																																																																																																																																																																																																																																																																																																																																																																										
30	31																																																																																																																																																																																																																																																																																																																																																																																																																																																																																																																																																																																																															
S	M	T	W	Th	F	S																																																																																																																																																																																																																																																																																																																																																																																																																																																																																																																																																																																																										
						1																																																																																																																																																																																																																																																																																																																																																																																																																																																																																																																																																																																																										
2	3	4	5	6	7	8																																																																																																																																																																																																																																																																																																																																																																																																																																																																																																																																																																																																										
9	10	11	12	13	14	15																																																																																																																																																																																																																																																																																																																																																																																																																																																																																																																																																																																																										
16	17	18	19	20	21	22																																																																																																																																																																																																																																																																																																																																																																																																																																																																																																																																																																																																										
23	24	25	26	27	28	29																																																																																																																																																																																																																																																																																																																																																																																																																																																																																																																																																																																																										
30	31																																																																																																																																																																																																																																																																																																																																																																																																																																																																																																																																																																																																															
S	M	T	W	Th	F	S																																																																																																																																																																																																																																																																																																																																																																																																																																																																																																																																																																																																										
						1																																																																																																																																																																																																																																																																																																																																																																																																																																																																																																																																																																																																										
2	3	4	5	6	7	8																																																																																																																																																																																																																																																																																																																																																																																																																																																																																																																																																																																																										
9	10	11	12	13	14	15																																																																																																																																																																																																																																																																																																																																																																																																																																																																																																																																																																																																										
16	17	18	19	20	21	22																																																																																																																																																																																																																																																																																																																																																																																																																																																																																																																																																																																																										
23	24	25	26	27	28	29																																																																																																																																																																																																																																																																																																																																																																																																																																																																																																																																																																																																										
30	31																																																																																																																																																																																																																																																																																																																																																																																																																																																																																																																																																																																																															
S	M	T	W	Th	F	S																																																																																																																																																																																																																																																																																																																																																																																																																																																																																																																																																																																																										
						1																																																																																																																																																																																																																																																																																																																																																																																																																																																																																																																																																																																																										
2	3	4	5	6	7	8																																																																																																																																																																																																																																																																																																																																																																																																																																																																																																																																																																																																										
9	10	11	12	13	14	15																																																																																																																																																																																																																																																																																																																																																																																																																																																																																																																																																																																																										
16	17	18	19	20	21	22																																																																																																																																																																																																																																																																																																																																																																																																																																																																																																																																																																																																										
23	24	25	26	27	28	29																																																																																																																																																																																																																																																																																																																																																																																																																																																																																																																																																																																																										
30	31																																																																																																																																																																																																																																																																																																																																																																																																																																																																																																																																																																																																															
S	M	T	W	Th	F	S																																																																																																																																																																																																																																																																																																																																																																																																																																																																																																																																																																																																										
						1																																																																																																																																																																																																																																																																																																																																																																																																																																																																																																																																																																																																										
2	3	4	5	6	7	8																																																																																																																																																																																																																																																																																																																																																																																																																																																																																																																																																																																																										
9	10	11	12	13	14	15																																																																																																																																																																																																																																																																																																																																																																																																																																																																																																																																																																																																										
16	17	18	19	20	21	22																																																																																																																																																																																																																																																																																																																																																																																																																																																																																																																																																																																																										
23	24	25	26	27	28	29																																																																																																																																																																																																																																																																																																																																																																																																																																																																																																																																																																																																										
30	31																																																																																																																																																																																																																																																																																																																																																																																																																																																																																																																																																																																																															
S	M	T	W	Th	F	S																																																																																																																																																																																																																																																																																																																																																																																																																																																																																																																																																																																																										
						1																																																																																																																																																																																																																																																																																																																																																																																																																																																																																																																																																																																																										
2	3	4	5	6	7	8																																																																																																																																																																																																																																																																																																																																																																																																																																																																																																																																																																																																										
9	10	11	12	13	14	15																																																																																																																																																																																																																																																																																																																																																																																																																																																																																																																																																																																																										
16	17	18	19	20	21	22																																																																																																																																																																																																																																																																																																																																																																																																																																																																																																																																																																																																										
23	24	25	26	27	28	29																																																																																																																																																																																																																																																																																																																																																																																																																																																																																																																																																																																																										
30	31																																																																																																																																																																																																																																																																																																																																																																																																																																																																																																																																																																																																															
S	M	T	W	Th	F	S																																																																																																																																																																																																																																																																																																																																																																																																																																																																																																																																																																																																										
						1																																																																																																																																																																																																																																																																																																																																																																																																																																																																																																																																																																																																										
2	3	4	5	6	7	8																																																																																																																																																																																																																																																																																																																																																																																																																																																																																																																																																																																																										
9	10	11	12	13	14	15																																																																																																																																																																																																																																																																																																																																																																																																																																																																																																																																																																																																										
16	17	18	19	20	21	22																																																																																																																																																																																																																																																																																																																																																																																																																																																																																																																																																																																																										
23	24	25	26	27	28	29																																																																																																																																																																																																																																																																																																																																																																																																																																																																																																																																																																																																										
30	31																																																																																																																																																																																																																																																																																																																																																																																																																																																																																																																																																																																																															

\* PAG and Family Nights to be scheduled along with several additional school activities

No School (green), Early Release (light green), PDD (Professional Development Day) No School (blue), Transitional Ceremony (red), Parent Teacher Conferences (yellow), First & Last Day of School (circle)

“...our plan is to be open in a safe and healthy manner, following the guidelines that are in place at the time.” – Executive Officer, James M. Olguin



### Nominations For Annual Elbert J. Floyd Award

Nominations are now being accepted for the annual Elbert J. Floyd Award. Eligibility requirements for recipients of the Elbert J. Floyd Award are:

- A Tribal member of the Southern Ute Indian Tribe;
- Deserving;
- A student of any age, formally enrolled in an education program, at any level, or someone planning immediate enrollment in such a program;
- Interested in continuing his or her education;
- Interested in serving the Tribe and the community; Approved by the Department of Education;
- An eligible recipient need not be living on the Southern Ute Indian Reservation at time of the nomination and but be available to return to the Tribe to receive the award in person.

Any teacher, Tribal member or other interested person may nominate and submit a letter of an eligible recipient for the Elbert J. Floyd Award to the Department of Education of the Southern Ute Indian Tribe. \*\*Nomination must be submitted in writing to Ellen S. Baker at the Southern Ute Education Dept. by \*\*5 p.m. on Friday, Sept. 17, 2021 and shall state the basis for the nomination. Or email the letter to [esbaker@southernute-nsn.gov](mailto:esbaker@southernute-nsn.gov) for more information call 970-563-0235. The selection of the recipient will be made by a committee of two members consisting of the Chairman of the Southern Ute Indian Tribe and Vice-Chairman of the Southern Ute Indian Tribe. This annual award is in memory of Elbert J. Floyd and is presented by Mr. Floyd's children and grandchildren to a deserving Southern Ute student.

### LIFESAVING HERO RETURNS • FROM PAGE 1



Christian Thompson/TTA Native American Program

The SunUte Community Center awarded several lifeguards, Junior lifeguards, and one, off duty SUDP officer on June 5, 2006 for saving the life of a SunUte swimmer who would have drowned if it was not for their quick response to the situation. Lifeguard Nick Joswick was awarded the Award of Valor Excellence, Joslyn Rowley was awarded Quick Responder, Officer Scott Webster was awarded First Responder Award and J.T. Aldarez, Christopher Mooney, and Ben Young were all awarded for Junior Lifeguard of the Year.

fluttered open and SunUte staff celebrated that moment.

After graduating high school, Mooney applied to be a SunUte lifeguard. He currently attends college in Grand Junction, Colo. at Colorado Mesa University. He will be returning to school this fall for his final year.

"I was a really young kid and experiencing something so traumatic like that scared me, but also gave me a deeper appreciation for life," Mooney said. "I was being praised for being a hero, but I think I was just in the right place at the right time."

According to the Substance Abuse and Mental Health Services Administration, the percentage of first responders who resign after experiencing a traumatic event averages at 30 percent, and that is after having witnessing or helping in the prevention of near-death episodes.

"Even though this specific incident was a non-fatal drowning, to have a young kid like Chris go through something like that and still want to have the responsibility to become a lifeguard is extraordinary," SunUte Community Center Director, Robin Duffy-Wirth said. "[When this happened], it was the most terrifying thing I've ever been through in my life."

Since the near fatal drowning 15 years ago, SunUte has implemented multiple procedures to keep patrons safe in the aquatic areas.

Before children are allowed to swim in parts of the pool where water passes above their heads, they must pass a swim test. This test not only identifies swim-



McKayla Lee/SU Drum

Christopher Mooney demonstrates how to properly perform CPR on a weighted doll that is used during the lifeguard training on the pool deck at SunUte Community Center.

ming levels but helps lifeguards ensure a safe swimming experience.

The SunUte Community Center was one of three institutes in Colorado to receive the American Red Cross Aquatic Examiner Award in 2018. Since then, SunUte lifeguards have been committed to the security and management of water safety. In addition to constant training and vigilance, aquatic programs like "Josh the Otter: Water Safety and Awareness Project" help teach families, staff, and children the importance of lifesaving curriculum.

"Our safety bar since then has gone from good to great, we work hard to keep that bar rising and we all walk in this culture of safety," Duffy-Wirth emphasized.

In addition to the required trainings and drills, aquatics staff are required to complete four hours of Emergency Action Planning, team building exercise and run practice drills.

"It truly takes a very amazing human to go through what he did as a young boy – then for him to return [to SunUte] as a mature college kid is great," Duffy-Wirth stated.

### CALL FOR NOMINATIONS for School Directors Ignacio School District La Plata County, Colorado

The Ignacio School District in the County of La Plata, State of Colorado, calls for nomination of candidates for school directors to be placed on the ballot for the regular biennial school election to be held on Tuesday, Nov. 2, 2021. At this election, two (2) directors will be elected for a term of office of four (4) years and one (1) director will be elected for a term of two (2) years. To be qualified, a candidate must have been a registered elector of the school district for at least 12 consecutive months before the election. A person is ineligible to run for school director if he or she has been convicted of committing a sexual offense against a child. A person who desires to be a candidate for

school director shall file a written notice of intention to be a candidate and a nomination petition signed by at least 25 eligible electors who are registered to vote in the regular biennial school election. Nomination petitions may be obtained at: Ignacio School District Administration Office, 455 Becker Street, Ignacio, CO. During these times and dates:

- Aug. 16-20: 8 a.m. – 4 p.m.
- Aug. 23-24: 8 a.m. – 4 p.m.

Completed petitions must be submitted to: Ignacio School District Administration Office, 455 Becker St., Ignacio, CO No later than 4 p.m. on August 27, 2021

### Multi-Purpose Facility August Indoor Yard Sale

Saturday August 14, 2021  
9:00 AM - 3:00 PM  
No Admission Fee - No Set-up Fee  
(Set-up doors open at 8:00 AM)

Southern Ute Indian Tribe COVID-19 limitations in effect  
Masks required for unvaccinated people  
Masks optional for vaccinated people  
be prepared to show your vaccination card

256 Ute Road, Ignacio CO

Call the MPF to reserve your table 563-2640 or e-mail [multipurpose@southernute-nsn.gov](mailto:multipurpose@southernute-nsn.gov)



Hourly Door Prize Drawings

### Multi-Purpose Facility Monday - Friday 8:00 AM to 5:00 PM 256 Ute Road, Ignacio CO

Piccadilly, Snow cones and Popcorn for sale

Snow Cone

S: \$1.00

L: \$2.00



Piccadilly

S: \$3.00

L: \$5.00



Flavors

Orange  
Lime

Strawberry  
Pine Colada

Rootbeer

Blue Raspberry

Tigers blood

Cherry

Popcorn

\$2.00



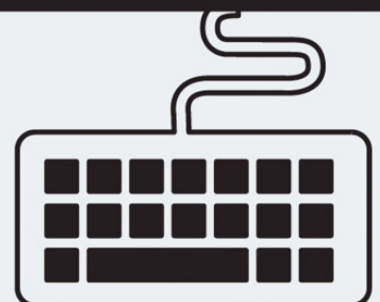
### Dancing Spirit To Offer After-School Arts Program

Dancing Spirit is excited to be offering our first ever Pre-K after-school arts program! Classes are based on the Ignacio School early release schedule and will be held each Wednesday afternoon from 2:30 to 5 p.m. Visit us online at [dancing-spiritgallery.org](http://dancing-spiritgallery.org) or call us at 970-563-4600. Registration packets are available at the Dancing Spirit office or on our webpage.

SOUTHERN UTE EDUCATION DEPARTMENT

### Computer Lab Temporarily Closed

The Education Department Computer Lab is "under construction" and not open to the public until further notice.



### BACK TO SCHOOL DATES

- Bayfield School District – August 24
- Durango School District – August 24
- Ignacio School District – Aug. 30
- Southern Ute Indian Montessori Academy – Aug. 30

## NATURAL RESOURCES

### Infrastructure Investment and Jobs Act to improve tribal access to clean water

**Staff report**  
OFFICE OF U.S. SENATOR BENNET

U.S. Senators Michael Bennet (D-Colo.), Martin Heinrich (D-N.M.), John Hickenlooper (D-Colo.), and Elizabeth Warren (D-Mass.) applauded funding in the Infrastructure Investment and Jobs Act (IIJA) that will improve Tribal access to clean water. The provisions in the IIJA largely mirror the Tribal Access to Clean Water Act introduced by the senators last month.

“Access to clean water is a fundamental human right, but the reality is that many Tribal communities and Alaska Native villages currently lack access to it,” said Bennet. “I’m thrilled the bipartisan infrastructure bill draws heavily on our Tribal Access to Clean Water Act. This is the first step of many to reduce this shameful disparity and help ensure that Tribal communities have access to safe, clean water.”

“In New Mexico, we know that water is life. And when communities don’t have access to clean drinking water – especially during a pandemic – they suffer,” said Heinrich. “That’s unacceptable, and it’s about to change. We are going to follow through on the federal government’s responsibility to sovereign Tribal nations and make meaningful investments in water infrastructure projects that will finally deliver clean water to all families in Indian Country.”

“Too many Tribal communities lack access to clean water, something every community must have. This much-needed investment will bring improved water infrastructure to Native Americans across the country and is an important step in making clean water access to all,” said Hickenlooper.

“Clean water is critical for sustaining healthy communities and economic growth. Our bill, the Tribal Access to Clean Water Act, would help address the severe shortcomings Native communities

face in accessing clean water and adequate sanitation – and fulfill the federal government’s trust obligation to guarantee this basic human right,” said Warren.

The IIJA would provide \$3.5 billion for the Indian Health Service (IHS) Sanitation Facilities Construction program, which is consistent with the \$3.4 billion provided to IHS in the Tribal Access to Clean Water Act to address needs for tribal sanitation facilities and services. Also in line with the Tribal Access to Clean Water Act, the IIJA increases funding for the Environmental Protection Agency (EPA)’s Clean Water Act and Safe Drinking Water Act State Revolving Funds (SRF). The IIJA also provides \$1 billion in funding in line with the senators’ legislation for the Bureau of Reclamation (BOR) to support legacy rural water supply projects, which will benefit tribes.

The senators continue to push for other provisions in the Tribal Access to Clean Water Act to be funded in the upcoming reconciliation bill:

- Increasing funding for Native communities at USDA Rural Development, by providing \$500 million for Community Facilities Grant and Loan Program for Native communities and ensuring that Native communities are eligible and treated equitably when considered for grants and loans.
- Improving funding for Tribal water projects by providing another \$1 billion to fund a competitive grant program for new Tribal clean water access projects.

In March, Bennet, Heinrich, and Warren introduced a resolution reaffirming the federal government’s responsibility to provide access to clean drinking water for Native American communities.

“The Senate’s identification of the necessary funding to build needed infrastructure so Native American homes enjoy clean drinking water is welcome and imperative. The Senate’s actions may mark a new era in the relationship between the federal government and Indians. Indian Country and Alaska Native Communities anxiously await Congress’s support,” said Bidtah Becker, Associate Attorney for the Navajo Tribal Utility Authority and co-leader of the initiative on Universal Access to Clean Water for Tribal Communities.

“Water access challenges have existed for decades in tribal communities, threatening the livelihood of thousands of Americans. S. 2369 recognizes these inequities by appropriating much needed funds to support tribal water infrastructure. Such commitments help fulfill the federal government’s treaty and trust responsibility to ensure Native Americans have a permanent homeland in which they can thrive,” said Heather Tanana, Assistant Professor of Law (Research) and Stegner Fellow, Wallace Stegner Center, S.J. Quinney College of Law, University of Utah, lead author of the report on Universal Access to Clean Water for Tribes in the Colorado River Basin.

“The funding proposed by S. 2369 for tribal clean water infrastructure would benefit public health, create jobs, and address longstanding racial injustice. Many thanks to Senators Bennet, Heinrich, Warren and Hickenlooper for acknowledging the tragic disparity in access to safe drinking water in Indian country and taking concrete steps to remedy the problem,” said Anne Castle, Senior Fellow, Getches-Wilkinson Center, University of Colorado, former Assistant Secretary for Water and Science, U.S. Department of the Interior, and co-leader of the initiative on Universal Access.

### Silva joins Election Board



photos McKayla Lee/SU Drum

Fidelia Silva gets sworn in to serve on the Southern Ute Election Board, Tuesday, Aug. 10 in the Southern Ute Tribal Council Chambers.

Southern Ute Council member Linda Baker welcomes members of the Southern Ute Election Board during a swearing in ceremony for their newest board member, Fidelia Silva.



### Southern Ute Utilities Payment Options

The Southern Ute Utilities Division would like to send a friendly reminder on payment options for utilities customers.

Customers enrolled in the automatic deduction should contact Tribal Finance to verify your deduction reflects the newly adjusted rate.

Contact Edith Muniz at 970-563-5501 or Wahleah Frost at 970-563-5506.

Payments can be processed in the following ways:

1. Online at <https://www.suitutil.com/pay-my-bill/>
2. Southern Ute Utilities Drive-thru
3. Over the phone with a credit/debit card
4. Via Wells Fargo Bill Pay at the Ignacio branch.
5. Tribal Deduction through the Finance Department.
6. By mail to Southern Ute Utilities Division, P.O. Box 1137, Ignacio, CO 81137
7. Over the phone by dialing 970-563-5500
8. Southern Ute Indian Housing Authority (SUHA), Emergency Rental Assistance Program. Please contact the SUHA at 970-563-4575 for more information. Utilities can also be covered through this program.



The Utilities Division Drive-thru Window and Waste Transfer Station are now open Monday through Friday, 8 a.m. – 5 p.m., and Saturdays, 8 a.m. – 5 p.m. and CLOSED on Sundays. The Utilities Division Lobby remains closed until further notice.

The Utilities Office can be reached by dialing 970-563-5500.

### Tribal Water Delivery Reminder

The Southern Ute Utilities Division would like to send a reminder to customers regarding your water delivery services. Each customer is responsible for providing unrestricted access to cisterns and for keeping this access in a drivable condition for the water delivery truck. Driveways must be passable through snow, mud and ice before the Water Truck Driver will deliver water to the customer. The cistern access must be kept clear of parked cars, obstructions, trees, or shrubbery. For questions or to clarify any information within this email, please contact the Southern Ute Utilities Division at 970-563-5500.






# TRIBAL

## Broadband Modernization PLAN

Improving the accessibility and connectivity to the internet on the Reservation is a priority of Tribal Council. In collaboration with Southern Ute Shared Services and other tribal departments, we are one step closer to increasing internet speeds and connecting tribal homes for the first time. There are 3 phases of this large project.

PHASE I	PHASE II	PHASE III
<ul style="list-style-type: none"> <li>• Deploy wireless options utilizing FCC 2.5Ghz license</li> <li>• Construct 3 new towers and add 70 miles of fiber</li> <li>• Provide 50/10 mbps</li> </ul>	<ul style="list-style-type: none"> <li>• Deploy fiber to align with potential funding</li> <li>• Deliver fiber to more populated tribal areas</li> <li>• Provide 100/100 mbps or higher up to Gig speed</li> </ul>	<ul style="list-style-type: none"> <li>• Extend fiber and/or wireless across the reservation</li> <li>• Partner with cellular carriers to improve coverage</li> </ul>

### Save the Date

SEPT. 17

Tribal Member Broadband Modernization Meeting

#### CURRENT FUNDING SOURCES

\$2.8 M	\$10 M	\$832 K
Tribal Capital Allocated for survey & engineering costs. Purchasing fiber and conduit for towers.	State of Colorado Allocated for Phase I construction of towers and fiber line.	BIA Funding Phase I planning and engineering costs.

For more information, please contact Mr. Delbert Cuthair, SUSS Project Manager at 970.563.5627 or via email at dcuthair@southernute.com




## 2021 Trash Permits HAVE ARRIVED



Tribal members can request a permit to be mailed by contacting the Southern Ute Utilities Division at 970.563.5500. Please verify the address on file. Permits are also available for pick-up at the shed beside the large waste receptacles. Permits are required to dump waste.

Permits are for enrolled Southern Ute tribal members only.





Tribal Members are encouraged to register for the CodeRED emergency notification system. This service is FREE and will send you voice or text alerts of an emergency situation near your location.

**SIGN UP ONLINE AT**  
[onsolve.com/landing/sign-up-for-coded-red-emergency-alerts/](https://onsolve.com/landing/sign-up-for-coded-red-emergency-alerts/)

**DOWNLOAD THE APP ON THE APP STORE OR GOOGLE PLAY**

Created & Published by Lindsay J. Box

a joint project of:

**FREE SUMMER FOOD For Kids!**

**WEDNESDAYS @ ELHI CENTER IN IGNACIO, 10-2**

**THURSDAYS @ PINE RIVER SHARES IN BAYFIELD, 10-2**

Pick up a FREE bag of kid-friendly food. May 26th-August 19th

Pine River Shares also provides family food bags at ELHI on Saturdays, 11AM-1PM

CALL 884-6040 FOR INFO  
 ALL KIDS 0-19  
 NO SIGN UP REQUIRED

Made with PosterMyWall.com

**Should I be concerned about the Delta Variant?**

The Delta variant of the virus that causes COVID-19 is surging in the United States. New data show Delta is different than past versions of the virus; it is much more contagious. While rare, some vaccinated people can get Delta in a breakthrough infection and may be contagious. Unvaccinated people: get vaccinated and wear a mask until you do. Everyone in areas of substantial or high transmission should wear a mask, even if they are vaccinated. <http://www.cdc.gov/coronavirus>

CREATE YOUR FUTURE

**Become an EMT**

**PCC Southwest in Bayfield offers an Emergency Medical Services certificate program**

Program begins **August 30**  
 Classes held Monday, Tuesday & Thursday from 6:00 - 10:00 pm at the Bayfield site, 110 E. South St.

For more info or to apply, email [Bethany.Powell@pueblocc.edu](mailto:Bethany.Powell@pueblocc.edu) or call **970.385.2098**

Reasonable accommodations will be provided upon request for persons with disabilities. To make a request, please notify the PCC Disability Resources Center at (719) 549-3446 or [Disability.Resources@pueblocc.edu](mailto:Disability.Resources@pueblocc.edu) at least five (5) working days before the event.

CREATE YOUR FUTURE

**Health Care CPR Training**

**Friday, Aug. 20 | 9 am-1 pm**  
 PCC Southwest Bayfield Site | 110 E. South St.

Class fee: **\$40 cash** for PCC students, **\$50 cash** for community members

For more info or to apply, call: **Bethany Powell at 970.385.2098**

Reasonable accommodations will be provided upon request for persons with disabilities. To make a request, please notify the PCC Disability Resources Center at (719) 549-3446 or [Disability.Resources@pueblocc.edu](mailto:Disability.Resources@pueblocc.edu) at least five (5) working days before the event.

**New Mexico Breastfeeding Task Force**

**It's Indigenous Milk Medicine Week!**  
 August 8th - 14th

**Indigenous Milk Medicine Week**  
 Aug 8 - 14

**Indigenous Milk Medicine Week: Nourishing Our Futures**  
 August 8 - August 14

For more information click here or visit [www.facebook.com/IndigenousMilkMedicineWeek](http://www.facebook.com/IndigenousMilkMedicineWeek)

**INDIGENOUS COLLECTIVE**

**INDIGENOUS MILK MEDICINE WEEK**

**INDIGENOUS COLLECTIVE**

Join us every morning for a Sunrise Honor Prayer via FB live!

<b>Friday, Aug 13 4pm CT   FB Live</b> Lactation Prenatal Preparation & Postpartum Recovery: Celebrating Indigenous Practices	<b>Saturday, Aug 14 10am CT   Zoom</b> Morning Flow for Parents & Caregivers ft. Pearl Walker-Swaney
<b>Friday, Aug 13 7pm CT   Zoom</b> Guided Meditation for Parents & Caregivers	<b>Saturday, Aug 14 6pm CT   FB Live</b> Indigenous Milk Medicine Week Closing Ceremony ft. Kansas Begay, Vanessa Bowen of Bowen Creative, & artist Erica Pretty Eagle Moore

**Virtual 5K Wellness Run/Walk/Move:** August is National Wellness Month! We are running, walking & moving for all of our communities & in solidarity & support of our Native chest feeders & lactation providers. Participants can compete anytime during the week.

## Tribe meets Native American Basketball Invitational



Lindsay Box/SU Council Affairs

Southern Ute Tribal Council met with the NABI Foundation's President & CEO and Director of Programs to discuss how the Tribe can provide support to the foundation and receive opportunities for tribal youth and programming support.



Lindsay Box/SU Council Affairs

NABI Director of Programs, Lynette Lewis listens as NABI President and CEO, Ginamarie Scarpa shares the important work of the NABI Foundation to Tribal Council. NABI is widely known throughout Indian Country for its basketball tournaments, but the foundation also provides educational opportunities for youth through the duration of the event.



Lindsay Box/SU Council Affairs

SunUte Director, Mrs. Robin Duffy-Wirth, jokes with Chairman Baker prior to the beginning of the meet and greet with NABI Foundation staff.



### Tribal Council's Elders Committee Survey

Tribal Council recognizes the importance of our Ute elders. The elders have knowledge of our traditions and culture that have been passed down through the generations. With this knowledge and wisdom, we are stronger as Nuuchiu because knowing where we come from paves the way to the future.

On June 29, 2021 Tribal Council restored the Committee of Elders and mailed each tribal elder a copy of the 2002 by-laws, results of the Elder's Survey of 2009, and a 2021 Survey for review and comment which will help determine the current needs of our tribal elders.

#### How to Participate

- Drop Box - Please place your comments and survey in the drop box located in front of the Leonard C. Burch Tribal Administration Building
- Postal Service - Please mail to Tribal Council Affairs, PO Box 737, Ignacio, CO 81137

#### Questions

For questions related to this survey and/or the Elders Committee, please contact Council Member Ramona Y. Eagle at (970) 563.2402

DEADLINE: August 25, 2021

**SAVE THE DATE**

Leeds School of Business at CU Boulder and the S. Ute Tribe present the **Innovators & Entrepreneur Conference** **Sept. 24-25 2021 | Sky Ute Casino | Ignacio, CO**

**Demystifying Entrepreneurship**

Don't miss this opportunity to learn from the award-winning faculty from the Leeds School of Business at The University of Colorado Boulder. Meets 6-8pm Friday & 8 am-4pm Saturday.

Come to this 2 day conference and learn from the best:

- Entrepreneurship: What is it and why it is important
- Motivation: Hear from other successful entrepreneurs
- Value Propositions: Develop successful products and offerings
- Differentiation & Competitive Advantage: Sales & marketing
- Entrepreneurial Economics: Revenue and profitability
- Funding Types & Sources

Register with QR code or email [trseibel@southernute-nsn.gov](mailto:trseibel@southernute-nsn.gov)

EVENT SPONSORS: Leeds School of Business, SBDC, Innovation Alliance

**STAY CONNECTED WITH COUNCIL SCHEDULE**

COUNCIL CONNECT REMAINS POSTPONED WHILE IN PHASE III "PROTECT OUR NEIGHBOR".

STAY CONNECTED WITH COUNCIL WILL TAKE THE PLACE OF COUNCIL CONNECT. SOUTHERN UTE TRIBAL COUNCIL WILL PROVIDE COVID-19 UPDATES, CHANGES ON TRIBAL, STATE AND FEDERAL LEVELS THAT IMPACT TRIBAL MEMBERSHIP, AND UPCOMING EVENTS.

**WEDNESDAY AFTERNOON** Tribal Council Updates will be posted to social media platforms.

**FRIDAY MORNING** Chairman Baker or Vice Chairman Valdez will provide updates on KSUT Tribal Radio every Friday at 9:00 A.M.

TUNE IN ON THE SOUTHERN UTE RESERVATION AT 91.3 FM, IN TOWOAC AT 100.9, IN THE FARMINGTON, NM AREA AT 89.7 FM AND ON THE WEB AT [KSUT.ORG](http://KSUT.ORG)



### Southern Ute Indian Tribal Council Contact Information

The Southern Ute Indian Tribal Council Members are working in office and remote while in Phase II "Safer at Home"; Level 2. Tribal offices remain closed, reopening information will be forthcoming. Council is still available for questions via phone and email.

- |  |   |
|--|---|
| <b>Melvin J. Baker, Chairman</b><br>970-563-2320<br><a href="mailto:mjbaker@southernute-nsn.gov">mjbaker@southernute-nsn.gov</a>         | <b>Bruce Valdez, Vice Chairman</b><br>970-563-2405<br><a href="mailto:brvaldez@southernute-nsn.gov">brvaldez@southernute-nsn.gov</a>        |
| <b>Marjorie Barry, Treasurer</b><br>970-563-2304<br><a href="mailto:mbarry@southernute-nsn.gov">mbarry@southernute-nsn.gov</a>           | <b>Linda K. Baker, Council Member</b><br>970-563-2407<br><a href="mailto:lkbaker@southernute-nsn.gov">lkbaker@southernute-nsn.gov</a>       |
| <b>Ramona Y. Eagle, Council Member</b><br>970-563-2402<br><a href="mailto:reagle@southernute-nsn.gov">reagle@southernute-nsn.gov</a>     | <b>Dr. Stacey I. Oberly, Council Member</b><br>970-563-2403<br><a href="mailto:soberly@southernute-nsn.gov">soberly@southernute-nsn.gov</a> |
| <b>Vanessa P. Torres, Council Member</b><br>970-563-2404<br><a href="mailto:vtorres@southernute-nsn.gov">vtorres@southernute-nsn.gov</a> |   |

## TREASURER'S PANA-QARU 'URU APAGHARU

Tribal Council Treasurer Marjorie Barry has shared the Pana-qaru 'uru 'apagharu "Money Talks" Quarterly Report on the Tribal Member Portal.

A hard copy version will be mailed to every tribal member household. To request a digital version, please contact Tribal Council Communication Specialist, Ms. Lindsay J. Box at 970.563.2313 or via email at [lbox@southernute-nsn.gov](mailto:lbox@southernute-nsn.gov).



### Southern Ute Indian Tribe News & Updates

Stay up to date with any information pertaining to the Southern Ute Indian Tribe online at:

- **Online:** [southernuteindiantribe.org](http://southernuteindiantribe.org)
- **Facebook:** [facebook.com/southernute](https://facebook.com/southernute)
- **The Southern Ute Drum:** [www.sudrum.com](http://www.sudrum.com)



## KSUT in Studio, Garrett LaBeau



photos Robert L. Ortiz/SU Drum

The Garret LaBeau Band, from Austin, Texas, makes an in-studio appearance in the KSUT Eddie Box Jr. Media Center, Friday, Aug. 6. The trio of the Garrett LeBeau Band joined KSUT staff, Jim Belcher, Robb Brantley, Ken Brott and Susan Banes "Susie B" after an in-studio performance and interview conducted by Jim Belcher. The Garrett LeBeau Band performed in Durango and Pagosa Springs bringing an end to an extensive tour, started in May.



The Garret LaBeau Band makes a return to KSUT, first playing in the old studio in 2017 and now playing in the new Eddie Box Jr. Media Center's performance studio.

Musician, Garrett LaBeau the son of an Irish American mother and Shoshone Indian father, LeBeau raised on the Wind River Reservation in Wyoming, cites a line from another inspiration, Native American writer, musician and activist John Trudell, "We need to think ourselves out of what we believed ourselves into."

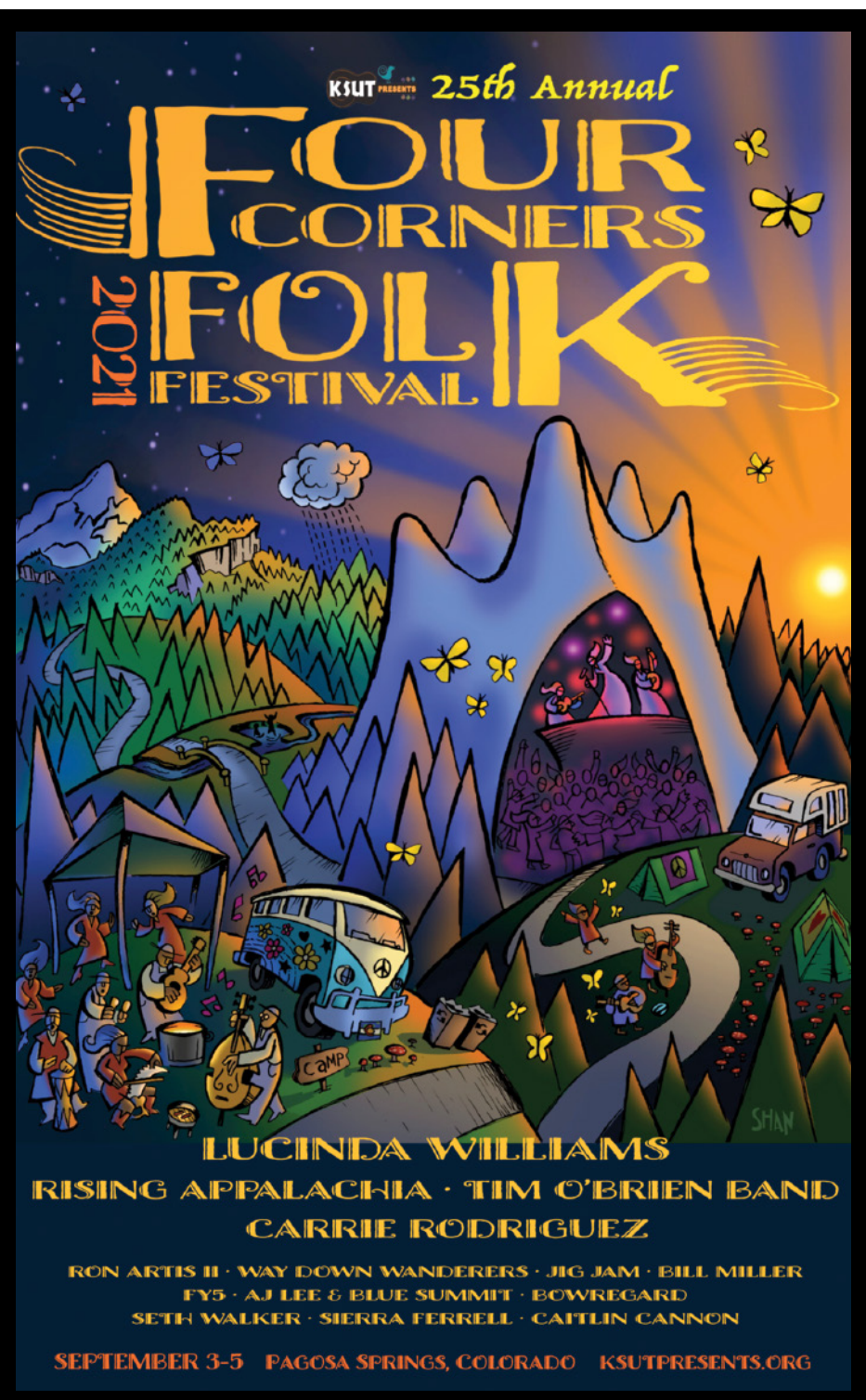
## Bayfield Upcoming Events

### Bayfield Block Party

The Town of Bayfield is hosting the 2021 Block Party, 5:30 – 8:30 p.m., Thursday, August 19 on Mill Street. There will be live music with Midnight Backhand, The Pine River Rotary Club beer tent, family fun activities, and vendors. Mill street restaurants will be open for dinner as well as the The Pine River Valley Heritage Society Museum. The event is free and open to the public.

### Bayfield Flag Football and Fall Youth Soccer

Registration is now open for Bayfield Parks and Recreation's flag football and fall youth soccer. Both programs are for girls and boys from age four, through 6th grade. Registration closes on Aug. 20, 2021, and league dates for both sports are Sept. 11 – Oct. 16, 2021. All registration is online at [www.ourbayfieldparks.org](http://www.ourbayfieldparks.org)



Fabian Martinez/SU Drum archive

The Southern Ute Drum Archive recently received 18 boxes of historic newspapers donated from the Ignacio Community Library and longtime Ignacio resident, Malcolm Jones, respectively. Also, the Archive received seven bound books of Ignacio Chieftains from the 1930's that were donated by the Pine River Community Library in Bayfield, Colo.

## MEDIA ARCHIVES

# Drum archive receives additional newspaper donations

*Historic Ignacio Chieftains date back to early 1930's*

By Fabian Martinez  
THE SOUTHERN UTE DRUM

In June 2021, the Southern Ute Drum Archive received a donation from the Ignacio Community Library of historic Ignacio Chieftains from the 1930's to 1973. 16 boxes were donated in total and included hundreds of physical newspaper issues of the Chieftain, as well as two rolls of microfiche of the Southern Ute Drum from 1970 through 1975.

Additionally, in the month of July, the Archive received another donation from the Pine River Library which included large books of bound issues of the Ignacio Chieftain from 1930 through 1940. Both donations from two local libraries will help complete the holes within physical archives inventory from 1925 to 1959, especially during the 1930's.

Along with this donation, the Archive also received a private donation of 21 issues of the Chieftain from

Malcolm Jones, a former Ignacio resident who grew up in region. Jones' family were previously owners, editors and publishers of the Ignacio Chieftain from December 1934 until July 1963. Jones also helped work on the paper with his family during his summers at home while attending the University of Colorado in Denver before serving in the U.S. Army and pursuing his career at NASA as an aerospace engineer. Jones currently resides in Texas, near the NASA Space Center.

With the donations from the Ignacio and Pine River Community Libraries and Jones, the Southern Ute Drum Archive is nearing completion of having most of the physical newspapers in the Chieftain File from 1930 to 1972. Now the Archive is better equipped to handle any research request from any Southern Ute tribal members, tribal entities, scholars or community members that wants to research

the vast history Ignacio and the surrounding region from the Great Depression to the post-Vietnam War era.

The Chieftain Archive File is still missing newspapers from the creation of the Chieftain newspaper in the 1910's to 1925. Any donation of Ignacio Chieftains during that time, Southern Ute Drums from 1969 to 1975, or the Southern Ute Drum Newsletter predating 1969 will be graciously accepted into The Southern Ute Drum's archive collections.

The Southern Ute Drum Archive would like to thank the Ignacio Community Library and the Pine River Library for their gracious donations to the collections. The Archive would also like to personally thank Malcolm Jones for his donation and sharing his personal history of the Ignacio Chieftain with our staff. Their contributions have been vital to helping preserve local history for future generations to come.

## The show must go on for KSUT



photos Robert L. Ortiz/SU Drum

Hundreds of The Motet fans and KSUT Party in the Park attendees weathered the rainstorm on Friday, July 30 in Durango's Buckley Park. The heavy rains caused opening act, The Afro Beatniks, to cut their set short. Never-the-less, the partygoers made their way back to Buckley Park after the rains subsided. KSUT also honored Durango ticket holders' entry into the KSUT Party in the Park in Pagosa Springs on Sunday, July 31 as a courtesy for the rainstorms putting a damper on the previous evening's event.



Over 1,200 tickets were sold for the two-day KSUT Party in the Park. The first show took place in Durango's Buckley Park on Saturday, July 30 and Pagosa Springs Town Park on Sunday, July 31.

Racquel Rodriguez joins The Motet on stage for the KSUT Party in the Park in Buckley Park in Durango, Colo., Friday, July 30. Rodriguez and percussionist Chuck Morris were added for the Durango and Pagosa Springs shows.

## TRANSPORTATION

### Signal, median and curb improvements set to begin in Durango

**Staff report**  
COLO. DEPT. OF TRANSPORTATION

The Colorado Department of Transportation, with Morton Electric, will begin work Monday, Aug. 9 to replace traffic signals, update curb ramps and install concrete medians on Camino del Rio (US Highway 550) near Town Plaza in Durango.

Signal replacement locations are at two intersections on Camino del Rio at 9th Street and 12th Street. New curb ramps and the installation of concrete medians will be at various locations of Camino del Rio between 8th Street and 14th Street.

"These updates will ultimately improve traffic flow, efficiency and safety for both pedestrians and vehicles at these intersections," said Julie Constan, CDOT Regional Transportation Director. "This is a heavily used corridor by local residents and visitors to the area and it's important we give our traveling public, both pedestrians and motorists, the best and safest experience possible."

#### Project Schedule

- Work is scheduled to begin in mid-August and expected to be completed by December 2021.
- Working hours will be from 7 a.m. to 5 p.m., Monday through Friday.
- Construction schedule is subject to change based on weather/unforeseen circumstances.

#### Travel Impacts

All travelers by motorized vehicles, bikes or on foot should expect some travel impacts throughout the construction of this project.

- Motorists should be aware of lane closures and lane shifts in the intersections.
- Pedestrians can expect sidewalk closures.
- Motorists are urged to obey speed reductions and watch for construction personnel and equipment in the work zone.
- Access to all businesses will be maintained, but may be temporarily altered.

#### Contact Information

- Project Hotline: 970-422-4201
- Project email: US-550Signals@gmail.com
- Project website: www.codot.gov/projects/us550-9th-12th-curb-ramps-durango

Travelers are urged to "know before you go." Gather information about weather forecasts, anticipated travel impacts and current road conditions prior to hitting the road. CDOT resources include:

- Road conditions and travel information: www.COtrip.org
- Sign up for project or travel alerts: bit.ly/COalerts
- See scheduled lane closures: codot.gov/travel/scheduled-lane-closures.html
- Connect with us on social media: Twitter @coloradodot and Facebook facebook.com/coloradodot

## TRANSPORTATION

### County Road 220 closed to through traffic – August 14 through 21

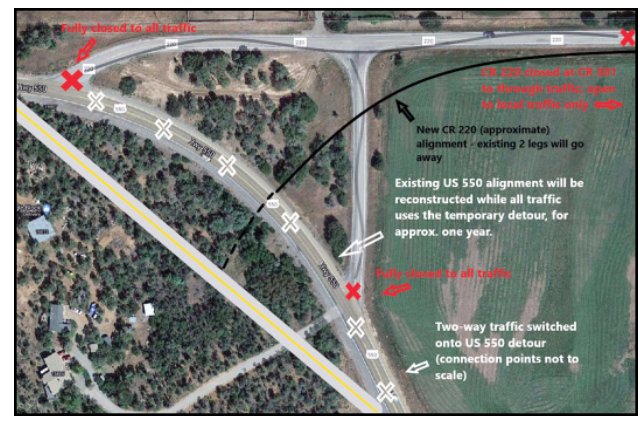
**Staff report**  
COLO. DEPT. OF TRANSPORTATION

The Colorado Department of Transportation and contractor Lawrence Construction will build a new alignment for CR 220 where it connects with US 550 just south of Durango. This construction of a new segment CR 220 will replace the two existing CR 220 legs - which both connect with US 550 at acute angles - with an alignment that meets the highway at a right angle. This new T intersection of CR 220 and US 550 will create a much safer junction, particularly as the future US 550 alignment will have acceleration/deceleration lanes at CR 220 as well.

To facilitate construction of the new CR 220 alignment, as well as accommodate the US 550 traffic switch onto the temporary detour, CDOT, in coordination with La Plata County, will be closing CR 220 between CR 301 and at US 550 for one week. From Saturday, August 14 at 6:30 a.m. to Saturday, August 21 late evening, that segment will be closed to through traffic - with signage and a barricade in the westbound lane - and open to local traffic at CR 301 only (no public traffic will be able to turn onto CR 220 from US 550).

**Saturday Morning, Aug. 14: CR 220 closed to through traffic.**

Crews will stripe the new two-lane, 1,400-foot paved shoo-fly detour that was built adjacent to the US 550 southbound lanes at CR 220. US 550 traffic will be switched onto this detour. The US 550 detour will be in place for about a year, while the new US 550 northbound



courtesy CDOT

lanes are constructed. To tie into the temporary US 550 detour, CR 220 will be closed to construct the new 1,000-foot alignment that will extend across the existing US 550 alignment to connect with the detour.

**Saturday Evening, Aug. 21: CR 220 re-opens.**

On August 21, the new leg of CR 220 will be striped and ready to open for traffic by the evening. Traffic will be switched onto the newly constructed final alignment of CR 220, which temporarily will connect with the US 550 detour.

**Date TBD: CR 220 closed to through traffic for one to two days**

On a date yet to be determined, CR 220 will be closed to through traffic again (for one to two days), between CR 301 and US 550, to enable crews to erect a temporary construction traffic bridge over the county road.

#### General Construction Travel Impacts

The construction access road that was built north of CR 220 - along what will become the new US 550 alignment - greatly limits traffic impacts and interruptions for motorists on US 550 and CR 220. And the new 1,400-foot-long detour near CR 220 will carry north-south US 550 traffic while the new north-

bound lanes are under construction, also limiting impacts to traffic.

US 550 travelers may encounter intermittent stops for construction equipment entering and exiting the road, from about 6:30 a.m. to 6 p.m., from Monday through Saturday (most weeks).

#### Project Background

The total cost of the project is \$98.6 million (this includes both CDOT project management and contractor costs). CDOT is constructing this project using the design-build process, partnering with a contracted team led by Lawrence Construction Company and RS&H, Inc. The interchange is scheduled for completion by the spring of 2023.

Project Contact Information - Community/travelers encouraged to sign up for weekly project updates via website.

- Project phone line: 970-880-2800
- Project email: us550.us160connection-south@gmail.com
- Project web site: www.codot.gov/projects/us550-us160-connectionsouth

For general travel impact updates for this and other CDOT projects: www.cotrip.org

## DRUM WINS 14 NAJA AWARDS • FROM PAGE 1

place for pre-pandemic coverage of the Southern Ute Education Department's exploration of the National Mall titled, "Students stay Close Up in D.C." Southern Ute Drum Administrative Assistant and Public Relations Coordinator, Trennie Collins took home a third-place win for "SunUte welcomes Jiu-Jitsu" in the same category.

Collins also took home a second and third place win in the Best Health Coverage category for her articles titled, "Easing mental health in the face of COVID-19" and "Mental Health: Giacci helps us heal from our past" respectively.

Ortiz won home first place in the Best Layout: Print/Online category for 2020.

Lee won first place for "Cross-court action" and Collins took home second place for "Youth ballers rock the court" in the Best Sports Photo category - both wins coming from re-



/SU Drum

Ortiz wins second place in the Best News Photo Category for his outstanding coverage of a socially-distanced outdoor graduation.

gional youth basketball coverage - rounding out this year's recognition for journalistic excellence by our peers in Indian Country.

The Southern Ute Drum competes in Professional and Associate Division I for newspapers with a print circulation under 5,000. Digital excellence reflects our newspaper website and social media presence. The

Drum's affiliation with NAJA goes back to the early 1990's; the association's mission is stated as - Empowering a unique network of members and journalists covering Indian Country.

NAJA will recognize outstanding Indigenous journalism in 2021 during a virtual National Native Media Awards ceremony Thursday, Oct. 28.

## Pine River Shares and the Bayfield Heritage Fest

It's a wild and wooly thing! And it's perfect for Pine River Shares! We are excited to be a host of the 2021 Bayfield Heritage Days and to celebrate, promote, and learn from the rich tri-ethnic heritage of the Pine River Valley. Help us find the crafters and makers, weavers, spinners, and "felters", cooks, canners and mutton stew makers, musicians, poets, and storytellers of our regional agriculture heritage. Invite them to attend Bayfield Heritage Days on Sept. 25, or consider hosting a demonstration or information booth, a skill share, or vendor booth, at Joe Stephenson Park from 10 a.m. - 1 p.m., following the Sheep Trailing and parade. Honoring our collective heritage in the Pine!

**Pueblo Southwest**  
Community College

# JOBFAIR

## and registration drive

### Friday, Aug. 20 from 3-5 pm

### PCC Southwest Bayfield site, 110 East South Street

Advertise your business vacancies and meet and interview potential candidates.

Email [Bethany.Powell@pueblocc.edu](mailto:Bethany.Powell@pueblocc.edu) or call **970.385.2098** to RSVP & to reserve a space.

# Rehumanizing Work

ALLIANCE SUMMIT 2021

SAVE THE DATE. TUESDAY, SEPTEMBER 21, 2021

As we are returning to work, things are going to be different. Some are not returning or have different expectations. Many will return to their offices and business travel as the world turns on again. In other cases, businesses will retain their hybrid or remote models, both to cut costs and maintain flexibility and productivity

So, how do we leap forward when we've discovered transformational elements that are beneficial? What are the human elements that are critical for a healthy, functional workforce environment? Rehumanizing Work sets out to provide answers to this very question. In order to facilitate this transformation opportunity, leaders must navigate a changed market and internally focus on making human engagement and wellbeing of the workforce top of mind.

At the 2021 Alliance Summit, we will have a strong, healthy conversation with leaders who have the ability to make some lasting beneficial changes to their organizations. Our common goal is to enable the recalibration of our businesses and our workforce to a new landscape.

#### Confirmed Keynote Speakers:



**Steve Cadigan**- Steve is a talent strategist and company culture expert responsible for building world-class teams and company cultures at some of the world's most respected organizations. He is the author of a book just published called "The Workquake", whose mission is to build a better, more honest, employer-employee relationship. What employers need and what employees want has evolved; however, many have yet to build a model and a contract that feels safe and inspirational to both parties.



**Kerry Siggins**- Kerry is the CEO of StoneAge. She is one of Colorado's Top 25 Most Influential Young Professionals and was a finalist for Colorado's CEO of the Year in 2017. StoneAge is recognized as a Top 100 company to work for by Outside Magazine. She is an author and a blogger and has two successful podcasts. Kerry is all about showing up, doing the work, sharing experiences and helping other with their leadership journey.



**Cory Richards**- Cory is an explorer and a visual storyteller. His adventurous expeditions have taken him to the peaks of Antarctica and the Himalayas of Nepal as well as the war zones of Angola, Uganda and Pakistan, and he was named one of National Geographic's Adventurers of the Year in 2012. He has pursued projects focused on adventure, geopolitical and social impact and tells a story of personal realization and mindset of leadership.



**Jessica Matlock**- Jessica is CEO of La Plata Electric Association (LPEA), a utility in Colorado, and its first female CEO in the company's 80-year history. Under her leadership, Matlock is helping LPEA transition to a clean energy company and a "utility of the future." Jessica worked as an energy expert for the U.S. Senate and advised the U.S. Congress and the Executive Branch on renewable energy and cyber security challenges related to the electric grid.



# Oklahoma Indian Nation Powwow



Tribal veterans and chiefs carry in the flags during Grand Entry at the 31st annual Oklahoma Indian Nation Powwow on Saturday, July 31.

**The 31st annual Oklahoma Indian Nation Powwow was held in Concho, Okla. this year from Friday, July 30 through Sunday, August 1. Each evening Grand Entry was held just as the sunset and dancers made their way into the powwow circle. Lights from food trucks, regalia supply tents and native craft vendors surrounded the powwow grounds each night. Royalty, veterans and contestants shared conversations and laughter as they enjoyed the tribal event for the first time since the COVID-19 pandemic canceled the Summerfest celebration a year ago.**

Photos by McKayla Lee  
The Southern Ute Drum



Jingle dress dancers fill the night with rhythmic tunes as they dance into the powwow circle on Saturday, July 31 during Oklahoma Indian Nation Powwow's Grand Entry.



A young jingle dress dancer makes her way around the powwow circle during Saturday Night's 31st annual Oklahoma Indian Nation Powwow Grand Entry.



Men's Fancy Dancer, Xavier Littlehead of Lawrence, Kan. showcases his footwork during the Saturday night grand entry at the Oklahoma Indian Nation Powwow.

## FREE Native Wellness Institute Virtual Trainings

The Southern Ute Native Connections is teaming up with the Native Wellness Institute to offer TEN (10) FREE registrations to their two virtual trainings coming September. Open to all Native Americans living or working on the Southern Ute Indian Reservation. Please see information below and contact Precious Collins at [pcollins@southernute-nsn.gov](mailto:pcollins@southernute-nsn.gov) or call 970-563-5700 to sign up before August 31, 5 pm.

- **September 14-15:** Self-Care Strategies for Work and Home (Nativewellness.com) from 9 a.m. to 4 p.m. (2 days). Pandemic fatigue. Zoom fatigue. Political fatigue. It's real and it has taken a toll on so many of us. The interactive training will include three sessions per day via Zoom. Self-care tools and strategies will be provided for individuals as well as how to bring these tools to your staff.
- **September 16-17:** Being Trauma and Healing Informed (nativewellness.com) from 9 a.m. to 4 p.m. (2 days). Historical and inter-generational trauma continues to impact tribal and urban communities. We can see the unhealthy cycles of trauma repeat themselves over and over again. How this affects our places of work, individuals, and families is the behavior associated with trauma- chronic negativity, people working in silos, addictions, people taking their own lives, lateral oppression, violence, hopelessness, and more. Trauma keeps many of us in a place of deficit-thinking, often keeping us from thinking like our ancestors- from a place of abundance-based ideas, thoughts, and actions.

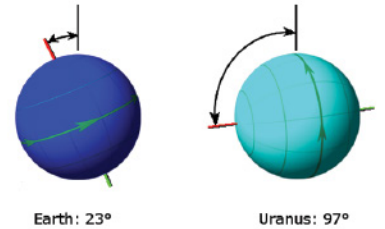
"Where there has been trauma, healing is the answer." This two-day interactive training will focus on providing an understanding of trauma on the brain, on behavior, how it plays out in the workplace and community and how to begin to address trauma and healing in your community. The training will also include how programs in their policies and delivery of services can be trauma and healing-informed.

To sign up for a free spot contact Precious Collins at [pcollins@southernute-nsn.gov](mailto:pcollins@southernute-nsn.gov) or call 970-563-5700 to sign up before August 31, 5 pm.



# Did you know?!

Uranus is the only planet in our solar system that rotates on its side.



Source: <https://solarsystem.nasa.gov/planets/uranus/overview/>

Please contact the Environmental Programs Division General Assistance Program Manager, Jeff Seebach at 970-563-2272 or [jseebach@southernute-nsn.gov](mailto:jseebach@southernute-nsn.gov) with any questions, comments or concerns.

## SAINT IGNATIUS PARISH among the SOUTHERN UTE



### KATERI CIRCLE

Procession and Solemn Blessing of  
Servant of God Nicholas Black Elk holy image.

TUE / AUG 17  
6:00 PM / ST. IGNATIUS PARISH  
Ignacio, CO

Followed by a fellowship gathering  
dinner and refreshments at the Parish Hall.

## Multi-Purpose Facility

Attention Tribal Members  
We are taking reservations following  
the Southern Ute Tribe COVID-19 limitations



Multi-Purpose Facility Hours  
Monday - Friday 8:00 AM - 5:00 PM

Weekly reservation deadline is Wednesday at 5:00 PM

Weekend and evening reservations are available no later than 8:00 PM

Reservations can be made via e-mail or in person

Telephone: 563-2640

e-mail: [multipurpose@southernute-nsn.gov](mailto:multipurpose@southernute-nsn.gov)

forms can be found at: <https://mpf-chapel.sunute.com/>



## Delta variant is surging in the U.S. Vaccination is more urgent than ever.



**Vaccinated**  
people are at  
**lower risk**



**Unvaccinated**  
people are at  
**higher risk**

for **severe illness, hospitalization, and death**

Getting vaccinated helps prevent **severe illness, hospitalization, and death** from COVID-19, including the **Delta variant**. It can also help reduce the spread of the virus in communities.



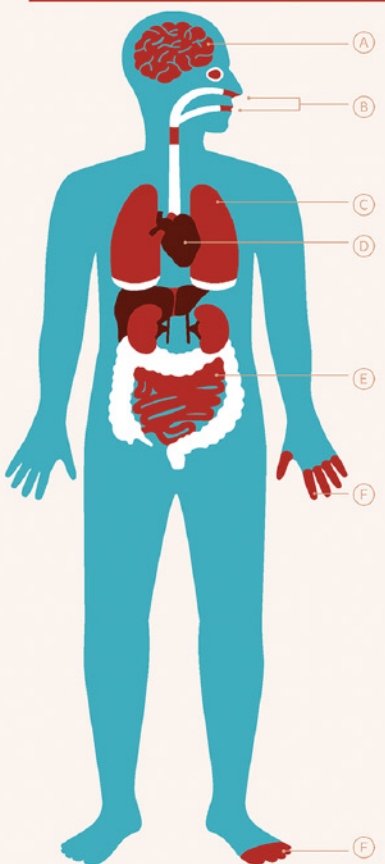
[cdc.gov/coronavirus](https://cdc.gov/coronavirus)

CS220716-A-08/09/2021

## COVID-19 and Long-Term Physical Health: What Community Members Need to Know

While most people get better within weeks of getting sick with COVID-19, some people experience post-COVID symptoms long after they are recovered and can no longer spread the virus. Post-COVID is also referred to as "long COVID" or "long-haul COVID". Post-COVID symptoms can be new, returning or ongoing health problems that occur four or more weeks after becoming sick with COVID.

**THE BEST WAY TO PREVENT POST-COVID IS TO GET VACCINATED**



LOCATION	SYMPTOM
WHOLE BODY	Tiredness, joint or muscle pain, sleep problems, fever, rash, symptoms that get worse after physical or mental activity
BRAIN	(A) Difficulty thinking or concentrating ("brain fog"), headache, dizziness, mood changes
NOSE AND TONGUE	(B) Change in smell or taste
LUNGS	(C) Shortness of breath, cough, difficulty breathing
HEART	(D) Chest pain, fast-beating or pounding heart (heart palpitations)
INTESTINES	(E) Stomach pain, diarrhea
FEMALE REPRODUCTIVE SYSTEM	(F) Change in period cycles
FINGERS AND TOES	(F) Pins and needles feeling (showing poor blood circulation)

Post-COVID conditions can happen whether you experience mild or severe COVID-19 disease. We don't know yet why people get post-COVID conditions or how long they can last.

**Get vaccinated with all necessary shots to prevent post-COVID conditions and to prevent the spread of new strains of COVID-19.** Follow all local guidelines to further protect yourself and others, which may include wearing a mask or avoiding indoor gatherings. If you have any symptoms of COVID-19, get tested as soon as possible.

Effective August 4, 2021  
Source: CDC



## Southern Ute Tribal Members Protecting our Past, Present & Future

The strength to overcome obstacles is demonstrated throughout the history of our people. Today, we are faced with new challenges that require us to come together to keep each other safe. The pandemic has lasted more than a year, which means a year without our ceremonies, social gatherings, and a year without being able to spend time with our loved ones that allow us to do the very things that define us as Ute people.

We must continue our safe practices so that we can overcome these obstacles to continue our culture and traditions in the safest ways that we can. Help us encourage and protect our people, by educating the importance of becoming vaccinated. Your personal perspective can help explain how vaccinations ultimately protect our culture and afford us an opportunity to continue our traditions.

The Southern Ute Incident Management's Communication Team will accept video, recorded and written testimonials encouraging the safe health practices, getting vaccinated & tested, or any encouraging message to promote a positive and healthy mental and physical environment to our tribal membership and surrounding communities.


- **Who:** Southern Ute Tribal Members, tribal staff, and Community members.
- **What:** Testimonials and feedback: safety practices, consistent testing and why vaccination is important to you or why you choose to remain unvaccinated.
- **Where:** Submit written testimonials to the TIS Department email: [tis@southernute-nsn.gov](mailto:tis@southernute-nsn.gov). Submit video or recorded testimonials to Ms. Lindsay Box, Tribal Council Communication Specialist via text at 970-553-0287.

Please continue to protect our people by wearing face coverings, practicing basic hygiene, and maintaining a safe distance from others. For more information please call the TIS Department at: 970-563-2281.

**Tawi Nuuchu na-gukwi-vani Covid-19**  
**"Together, we can fight COVID-19"**

*\*All testimonials will be shared to the Tribe's social sites unless otherwise stated upon submission\**

Approved by: SUIT IMT 5/11/2021

**TAWI NUUCHU NA-GUKWI-VANI COVID-19**  
"TOGETHER, WE WILL FIGHT COVID-19"

**THE TRIBE IS IN PHASE III "PROTECT YOUR NEIGHBOR"**  
Please continue to follow the appropriate COVID-19 restrictions and adhere to all public health orders in effect. Tribal Council amended the public health order requiring face coverings for **ALL** individuals whether vaccinated or unvaccinated while indoors. Let's reduce transmission and keep our community safe!

FOR MORE INFORMATION, PLEASE VISIT THE TRIBAL WEBSITE, SOCIAL MEDIA AND SOUTHERN UTE DRUM.

**EFFECTIVE MONDAY, AUGUST 9, 2021**  
**THE TRIBE MOVES TO PHASE III "PROTECT OUR NEIGHBOR"**

**Restrictions in Phase III**

<b>Personal Gathering</b>	<b>Indoor Capacity</b>	<b>Outdoor Capacity</b>
No greater than 125	Up to 100% 500 Max	Up to 100% 500 Max

To find a list of the approved activities, please go to the Southern Ute Indian Tribe's website, Tribal Council social media, and the Southern Ute Drum.

**TAWI NUUCHU NA-GUKWI-VANI COVID-19** "TOGETHER, WE WILL FIGHT COVID-19"

**SOUTHERN UTE INDIAN TRIBE COVID-19 UPDATE**  
(As of August 11, 2021)

<b>Southern Ute Health Center Cases</b>	<b>SUHC Vaccination Update</b>
264 Positives	<b>Upcoming 1st Dose Clinics &amp; Availability</b>
186 Recovered	8/24 (Moderna) 6
4 Breakthrough	8/26 (Pfizer) 5
11,462 Total Tests	9/3 (Moderna) 7
	9/8 (Pfizer) 11

**Southern Ute Tribal Member Cases**

106 Positives	Vaccine Eligibility: Anyone 18 years of age and older (12 years and older for Pfizer).
74 Recovered	Call SUHC for appointment (970) 563.4581
3 Deaths	

**TAWI NUUCHU NA-GUKWI-VANI COVID-19** "TOGETHER, WE WILL FIGHT COVID-19"

**Can a COVID-19 vaccine give you COVID-19?**

**NO**

No parts of the vaccine can cause disease in our bodies, but they do give our immune system guidelines to build the tools that fight the virus.

**SOUTHERN UTE INDIAN TRIBE**

**PHASE III "PROTECT OUR NEIGHBOR" METRICS AND RESTRICTIONS**

The Southern Ute Indian Tribal Council approved Resolution 2021-104, amending the adopted key metrics and restrictions for various phases of the COVID-19 pandemic. The graphic below explains the key metrics and restrictions for each of the phases.

**For more info and updates**  
[www.southernute-nsn.gov](https://www.southernute-nsn.gov)  
Southern Ute Indian Tribe on Facebook

**Key Metrics & Restrictions for Phases of COVID-19 Pandemic**

Metrics	PHASE I "STAY AT HOME"	PHASE II "SAFER AT HOME"	PHASE III "PROTECT OUR NEIGHBOR"
	SEVERE RISK	LEVEL 3 HIGH RISK	LEVEL 1 CAUTIOUS
NEW CASES IN SW REGION (WEEKLY AVERAGE)	400+ / 100,000 One week incidence	301-400 / 100,000 One week incidence	101-300 / 100,000 One week incidence
% OF POSITIVITY	10% or Greater	> 5% and < 10%	> 5% and < 10%
HOSPITALIZATIONS	Increasing and Capacity Limits Anticipated	Stable	Stable
<b>Restrictions</b>			
PERSONAL GATHERING SIZE	No greater than 5	No greater than 10	No greater than 30
INDOOR SETTING CAPACITY	CLOSED	25% Max Capacity	75% Max Capacity
OUTDOOR EVENTS	CLOSED	25% Max Capacity	75% Max Capacity

**Reopening Announcement**  
The Southern Ute Indian Tribe will reopen on **Mon., August 9, 2021.**

Tribal Members, Employees and Visitors are encouraged to continue daily safe health practices while responding to the current COVID-19 pandemic.

Wear your mask | Practice social distancing | Wash your hands

For more information or updates visit: [www.southernute-nsn.gov](https://www.southernute-nsn.gov) or Official Facebook



**Please know that our main goal is to keep everyone safe and our doors open!**

Due to the severity of the Delta Variant, the SunUte Community Center is taking a step back with our opening plan.

- For the time being, we are not selling punch passes, daily visits or one-month memberships

**There is a new Southern Ute Tribal mask mandate to keep us all safe. The following is how we will implement this mandate:**

- All *nonvaccinated* patrons are required to wear a mask at all times with the exception of swimming in the pool.
- All *vaccinated* patrons are required to wear a mask while moving throughout the building and while weightlifting or playing in the gymnasium.
  - If it is not possible to wear a mask while doing cardio, and you are able to maintain a safe 6 feet apart from others, masks are not required for *vaccinated* patrons.
  - If a group exercise class has no more than 11, including the instructor, masks are not required for *vaccinated* patrons.
    - We have measured and set the room up so that everyone is a safe 6 feet apart

**For all members: masks must be worn while on the pool deck, in the locker rooms/bathrooms, in the hallways and in the gymnasium.**

**High risk activities:**

- Indoor swimming is considered a high-risk activity for *nonvaccinated* individuals.
- Not wearing a mask, even if *vaccinated*, when in contact with a person who has health risks is a high-risk activity.

**Please call Robin Duffy-Wirth, SunUte Director, with any questions/concerns. Work: 970-563-0214 Cell: 970-749-7998**

**CORONAVIRUS**

**COVID-19 outbreak at Nissan of Durango updated**

*12 positive cases and 3 fatalities*

**Staff report**  
SAN JUAN BASIN PUBLIC HEALTH

The SJBPH outbreak investigation is ongoing, community strongly urged to wear masks in public indoor settings and receive vaccination for COVID-19.

San Juan Basin Public Health (SJBPH) has updated the number of positive COVID-19 cases associated with the Nissan of Durango outbreak to 12 and the number of fatalities to three. A fourth individual passed away after contracting COVID-19, however it does not meet the Colorado Department of Public Health and Environment's (CDPHE) case definition to be added to the outbreak fatality list. The first case was identified on June 19. Five cases of the Delta variant have been confirmed in association with the outbreak through full-genome sequencing conducted by CDPHE. As of August 9, two of the 12 cases associated with the outbreak have been confirmed as "breakthrough" cases identified in fully vaccinated individuals.

Over the course of the investigation, SJBPH and Nissan of Durango have implemented mitigation response plans for the business, including testing and contact tracing. All positive cases associated with Nissan of Durango have been put on isolation and those identified as unvaccinated close contacts were put on quarantine.

COVID-19 continues to circulate at 'high' rates in La Plata and Archuleta counties as defined by the Centers for Disease Control and Prevention (CDC). Four active outbreaks are currently listed across the combined SJBPH jurisdiction of La Plata and Archuleta counties. An outbreak within a business is defined by CDPHE as five or more cases associated with a single facility in a fourteen-day period.

"The recent COVID-19 fatalities are a tragic loss for our community and a reminder that the pandemic is not over," said Liane

Jollon, Executive Director of SJBPH. "We're very grateful for the cooperation of Nissan of Durango in response to this outbreak and to every business still working to keep our communities safe. We are heartbroken to report the recent COVID-19 related deaths. We urge everyone to get vaccinated as soon as possible and follow SJBPH's public health advisory by continuing to wear masks in public indoor settings like the grocery store and other businesses."

SJBPH offers free on-site vaccinations for local employers; contact our COVID-19 Vaccine team at 970-335-2091 for more info.

- SJBPH provides on-site testing options for local businesses, including rapid tests and free at-home test kits for those working in high-contact jobs. Visit <https://sjbpublichealth.org/testing-options> for details.
- Testing remains critical and allows public health officials to identify COVID-19 variants. Anyone with COVID-19 symptoms, including vaccinated individuals, should get tested. Learn more at <https://sjbpublichealth.org/testing>.

The outbreak at Nissan of Durango followed one of the largest outbreaks SJBPH has investigated to date in Archuleta County at the Pagosa Springs Walmart. Cases of the Delta variant were identified in both outbreaks. Being fully vaccinated is the best means of protection against the Delta variant. SJBPH also strongly urges layering protection against the Delta variant by wearing a mask and social distancing in public indoor settings regardless of your vaccination status.

SJBPH's investigations into both outbreaks suggested that the lack of public health precautions within the workplace, especially regarding unvaccinated staff, contributed to the elevated number of cases.

SJBPH is urging all community members to main-

tain their practice of the following critical public health precautions to prevent the spread of COVID-19:

- Get vaccinated for COVID-19. Vaccine clinics and providers are available on the SJBPH website.
- Stay at home when feeling unwell.
- A local public health advisory is in effect.
- Employees and guests are strongly advised to wear a mask in public indoor settings, regardless of vaccination status.
- Physical distancing (staying at least six feet away from another person) is strongly advised while in a public indoor setting.
- Businesses should err on the side of assuming that some customers entering a business are unvaccinated and should maintain face coverings and physical distancing in indoor settings (i.e., grocery stores, gyms, restaurants).
- Face coverings must be worn while using public transportation and when travelling by air, train, or bus.
- Practice good hygiene: wash hands frequently, cover coughs and sneezes.
- Get tested if you have symptoms or if you are unvaccinated and believe you were exposed through a known contact or community interaction, testing sites are listed on the SJBPH website.

The COVID-19 vaccine is now widely available to all residents ages 12 and up. Youth ages 12 to 17 are only eligible for the Pfizer vaccine. Minors must have a signed parental consent form which can be completed online when registering or at the clinic.

Although advance registration is preferred, walk-ins are also welcome at upcoming clinics. The vaccine is free, and no ID is required. Additional clinics and information about the COVID vaccine can be found on SJBPH's website.

**Maykh. YUGA**  
"HELLO, COME IN"

THE SOUTHERN UTE INDIAN TRIBE WILL RE-OPEN TRIBAL BUILDINGS AND OPERATIONS ON MONDAY, AUGUST 9, 2021!

INDIVIDUALS ARE REQUIRED TO ADHERE TO ALL PUBLIC HEALTH ORDERS IN EFFECT.

**WE CAN DO THIS**  
Indian Country

**I continue to do my part for all our people.**

**CREATE YOUR FUTURE**

**Become a CNA**

PCC Southwest in Bayfield offers a **Certified Nurse Aide** certificate program.

**Program begins August 23**  
Classes held **Monday through Fridays** from **4:00 - 8:30 pm** at the **Bayfield site, 110 E. South St.**

For more info or to apply, call:  
**Bethany Powell at 970.385.2098**

**Pueblo Southwest Community College**

Reasonable accommodations will be provided upon request for persons with disabilities. To make a request, please notify the PCC Disability Resources Center at (719) 549-3446 or [DisabilityResources@pueblocc.edu](mailto:DisabilityResources@pueblocc.edu) at least five (5) working days before the event.

**Already had COVID-19?**

Studies show that getting a **COVID-19 vaccine** after you recover from COVID-19 provides added protection to your immune system.

Vaccines are a safe way to keep you from getting and spreading COVID-19. COVID-19 vaccination also helps **protect you** from serious illness if you get sick again.

Visit **Vaccines.gov** to find vaccination providers near you.

[cdc.gov/coronavirus](https://www.cdc.gov/coronavirus)

**CONTINUED CORONAVIRUS COVERAGE**

Stay up to date with the Coronavirus news, updates and the Southern Ute Tribe:

- [www.southernute-nsn.gov](http://www.southernute-nsn.gov)
- [Facebook at www.facebook.com/southernute](https://www.facebook.com/southernute)
- [CDC at www.cdc.gov/coronavirus](https://www.cdc.gov/coronavirus)

## BOBCATS FOOTBALL

# Bobcats opening '21 against Roaring Fork

*IHS also to host SPC powers Monte, Centauri*

**By Joel Priest**  
SPECIAL TO THE DRUM

Following a disastrous 2017 in which then-skipper Matt Phelan's team – which surrendered 60 or more points four times and never fewer than 41 – went 0-9 overall and 0-5 in the 2A Western Slope, Roaring Fork elected to mothball varsity football.

With faint interest preventing the program in Carbondale from flat-lining altogether, an 11th-hour players' vote kept the Rams on life support as a JV-grade squad at the eight-man level, with well-traveled Dave Close – previously of RFHS fame and later stops at 2A Bayfield and 1A Buena Vista, amongst others – brought in from eight-man force Norwood to oversee the survival.

And not even COVID-19's awful timing would put Fork under once and for all.

With all schools in the Roaring Fork Valley and Garfield County choosing to wait until Spring 2021 to churn out something of a pandemic-delayed 2020 season, RFHS returned to 11-man life and will be Ignacio's first gridiron foe this fall, with kickoff time set for 2 p.m. Saturday, August 28.

Now representing the 1A Western Slope, skipper Eric Bollock's bunch expectedly struggled this spring as overmatched members of the COVID-cobbled '2A West.' Completing a conference-only slate standing 0-6, the Rams were shut out three times including a season-ending 44-0 home loss to Parachute Grand Valley. Able to total only 20 points offensively, a morale-boosting six did come in a 48-6 home loss to Manitou Springs – which would go on to stun Westminster Flatirons Academy in double-OT, 31-30, to snatch the Spring 2021 State Championship. It was the 7-1 Mustangs' third win by three or fewer points.

After hosting Roaring Fork, IHS (3-2, 3-2 1A Southern Peaks in Fall '20) will travel to 3A Newcomb, N.M., for a 7 p.m. start Sept. 3. The Skyhawks will have opened at 2A Laguna Acoma on the 27th, following a brief Spring 2021 in which NHS went 0-4 overall (all games were squeezed in to the month of March) and faced just one District 1-3A rival in Crownpoint.

Ignacio will next visit



Joel Priest/Special to the Drum

Ignacio Bobcat Football officially got the Fall 2021 season going with practices beginning Monday, Aug. 9. IHS' first game is set for the 28th when non-conference Roaring Fork comes down from Carbondale.

Trinidad on Sept. 10, with the Miners back in the 1A Santa Fe after going 0-3 last fall as a COVID-relocated Tri-Peaks inclusion, and 0-6 overall. THS' last win came Oct. 18, 2019, when they defeated Ellicott 44-24 in SFC play.

Returning to IHS Field, the Bobcats will welcome Farmington, N.M., Navajo Prep on Sept. 17. Now another New Mexico Activities Association Dist. 1-3A member, the Eagles were unable to see action this past season due to pandemic-mitigation measures, but had finished 5-5 overall and 2-1 in Dist. 5/6 play in 2019.

Following a bye week, Ignacio will get October underway hosting Dolores on the 1st. While a road trip to Montezuma Creek, Utah; Whitehorse had been considered for the same date, rumbling with their longtime SoPeaks nemesis couldn't be passed up... even if said nemesis won't be part of the SPC picture this season.

After going an abbreviated 0-5 overall, 0-4 SPC last fall, DHS – whose slide reached 20 consecutive contests overall since mid-2018 and 15 straight conference clashes (including last year's 57-0 loss at Ignacio) since 2017 – was rumored to possibly drop to 8-man, what with dates against long-established 8-man programs Mancos, Dove Creek and Norwood currently appearing on their own schedule.

Late Tuesday morning, Aug. 10, Dolores athletic director John McHenry provided some clarification, stating in an e-mail that DHS will be playing a JV-level season mixing both 8-man and 11-man football.

Homecoming Week brings Center to IHS Field for a 7 p.m. kickoff Fri., Oct. 8. The 'Cats have beaten the Vikings two years running and will

look to make it three; CHS managed to play just three times last fall, going 0-3 overall and 0-2 SPC (losing at home to IHS and then at Monte Vista).

Having had plenty of opportunity to gain momentum, Ignacio's toughest challenges await in Weeks 8 and 9, with both MVHS and Centauri coming to town. Up first at 7 p.m. Fri., Oct. 15, the Pirates went 5-2 overall and a second place 4-1 in the SoPeaks. Having defeated the Bobcats 56-7 last fall out at Sullivan Field, Monte Vista's losses in 2020 were to non-conference 1A Colorado Springs Christian (in MVHS' season-opener), and at Centauri with the SPC title at stake.

48-nil victors in La Jara over Monte, Centauri – in town Oct. 22 – never experienced a true challenge until the postseason when, as the Class 1A State Playoffs' 6-seed, the Falcons (7-1, 4-0 SPC) upset 3-seed Florence 20-17. But for a fourth straight season, however, Strasburg dashed CHS' championship dreams, winning 27-14 in the semifinals.

Seeded No. 2 in the reduced eight-team bracket, SHS (8-1) would then lose 28-zip to No. 1 Limon (7-0) in the finale (unlike in 2A, there was no Spring '21 State Playoffs).

Regular season play for Ignacio will conclude Fri., Oct. 29, at Del Norte. The Tigers' lone win during the truncated Fall 2020 campaign came 30-0 against hapless Dolores; IHS would drub DNHS (1-4, 1-3 SPC) 40-0 six days later at IHS Field.

Formal CHSAA-sanctioned practices got underway Aug. 9, with players first permitted to don full uniforms Aug. 12-13. Full-contact drills could begin Sat., Aug. 14, but all practice dates are limited by the Association to just one practice per.

## BOBCATS VOLLEYBALL

# Volleycats facing travel-heavy Fall '21

**By Joel Priest**  
SPECIAL TO THE DRUM

Having stepped off the volleyball court only a few months ago, following a 2020 season pushed back by the coronavirus pandemic to Spring '21, Ignacio's already back in action with their first Fall '21 match just two weeks away.

So in that regard, one could say a return to the sport's traditional – as laid out by the Colorado High School Activities Association – timing will be akin to striking while the metaphorical iron is hot. Considering the squad's schedule released this week to the media, that could prove more beneficial than perhaps anything else.

For including a mid-season trip to the Sept. 24-25 Simla Invitational, and another long haul out to the Rye Invite wrapping up the regular-season grind, IHS will be away from home ten times – eleven if one counts 3A Pagosa Springs' Pirate 4 Corners Scrimmages slated for this Sat., Aug. 14.

Officially picking up



Joel Priest/Special to the Drum

IHS Volleyball officially got the Fall 2021 season going with practices beginning Monday, Aug. 9. The Volleycats' first regular-season match is set for the 27th when they head north to Ridgway, Colo.

where they left off back on April 24, the 'Cats will then get everything underway at 4 p.m. Fri., Aug. 27, at graduation-wracked Ridgway, with a trip to Mancos following four days later. After getting their first look at a couple 2A-level rivals in the 2A/1A San Juan Basin League, Ignacio will welcome Montezuma-Cortez Thurs., Sept. 2.

And if there was a southwestern-Corona crew eager to resume work so quickly after a swiftly moving spring, it would be the

Lady Panthers (No. 7 in the preseason CHSAA Now.com Class 3A poll), who went 8-0 in the 3A Inter-mountain and 14-1 overall after falling to Sterling in the eight-team 3A State Championships' semifinals.

Non-league action continues for IHS with a 9/9 date at Del Norte, which eliminated SJBL heavyweight Dolores (7-1 2A SJBL, 10-2 2A/1A SJBL, 10-6 overall in Spring 2021) from 2A

*Volleycats page 20*

## COLORADO HIGH SCHOOLS

# CHSAA/Denver Broncos to host High School Media Day

**Staff report**  
COLO. HIGH SCHOOL ACTIVITIES ASSOCIATION

The Denver Broncos, in partnership with the Colorado High School Activities Association, are hosting the third annual High School Media Day from 10 a.m. to 2 p.m. on Monday, August 16, at Empower Field at Mile High in Denver.

The event will include two special sessions – a prep sports media roundtable and an hour-long press conference for all non-football fall sports. The football event will mirror what was presented in 2019, featuring 20 of the best high school football teams in the state across all classifications, as well as 20 athletes in other sports, and will provide sports media members with a one-stop shop to visit with some of the top student-ath-

letes in Colorado. The media roundtable will begin at 9:30 a.m. Athlete press conferences will begin at 10 a.m. Both will be held in the Broncos home media room.

"The media roundtable features a chance for the media to learn about important CHSAA initiatives and meet new Director of Digital Media Director Brad Cochi, as well as Assistant Digital Media Director Dan Whitaker, who are now overseeing media relations," said Commissioner Rhonda-Blanford Green.

All participants in attendance wearing game jerseys/uniforms and will be available for interviews including both time on the podium and one-on-one opportunities.

CHSAA commissioner Rhonda Blanford-Green and all CHSAA assistant

commissioners who administer the fall sports will be available for interviews, as well. Adam Bright (Football), Jenn Roberts-Uhlig (Cross country, Gymnastics, Spirit), Bethany Brookens (Volleyball, Boys Tennis), Rashaan Davis (Activities), Tom Robinson (Boys Golf), Justin Saylor (Boys Soccer, Field Hockey) are the sport administrators.

Teams will rotate through other breakouts during the event: Media Relations 101 session with the Broncos Public Relations staff, including education on how social media can positively and negatively impact their reputation and high school experience; a photography session with professional photographers who will take head shots and group shots of all players and coaches; as well as a facility tour.



### HIRING: Part-Time Lifeguards!

SunUte Community Center is hiring part-time lifeguards! If you are a motivated, friendly person that knows how to swim and you are looking for a fun part-time job, SunUte is the place for you!

#### Position Summary

This position is responsible for lifeguard activities in the pool area in accordance with the guidelines established and approved by the Aquatics Manager.

#### Education and Experience

- Must have or be able to obtain a nationally recognized certification in Lifeguarding procedures and practices within 1-month from the hire date. (We will train you)
- Must learn how to test water chemistry and make necessary adjustments to comply with established standards. (We will train you)
- Must be at least 16 years old.
- Must pass a thorough background check including Criminal History, fingerprint check, and a pre-employment drug-test.

TO APPLY, please visit: <https://www.southernute-nsn.gov/careers/> and look for the "Lifeguard (Part-time)" listing.



## Sky Ute Fairgrounds & RV Park

### Announcement

## SKY UTE FAIRGROUNDS IS REOPENING!!

**When:** July 19, 2021

**Hours:** Mon-Sun / 8am-5pm

**Who:** Everyone!

**How:** COVID-19 Precautionary Restrictions Apply

- Covid Questionnaire required for all Patrons
- Hand Sanitizing Station Available

**We look forward to hosting your upcoming event!**

**CALL FAIRGROUNDS FOR MORE INFORMATION**

**(970) 563-5541 OR**

**(970) 553-1376 ON WEEKENDS (SAT/SUN)**

Visit our website at [www.skyutefairgrounds.com](http://www.skyutefairgrounds.com)







## TRIBAL OBITUARIES



a mother and grandmother first, then to care for her horses, and other pets, including taking care of her land. She had many talents and multiple likes in which she loved include perfecting her beading work, following the powwow trail in her younger days fancy dancing, participating in hand game and enjoyed the simple life with her family.

She was preceded in passing by her father Robert L. Baca. On her mother's side; brother Uriah Cloud, grandfather Julius Nash Cloud, Grandmother Molly Buck Tobias Cloud, uncle Neil Buck Cloud, uncle Gerald Buck Cloud, uncle Elliot Cloud, uncle Darwin Cloud, auntie Lorraine Cloud, cousin Janell Denny, niece Janette Frost, cousin Lucinda Cloud.

She leaves behind her children; daughter Kree Lopez (Melvin Deal Jr.), son Philman Lopez, grandchild Mia Lopez and youngest daughter Kirsten Lopez. Mother Renee Cloud; sister Tonece Baca, sister Marquetta Cloud (Matthew Archuleta); nephew Isaiah Valdez, nephew Sergio Cloud, niece Izabella Cloud, niece Yllana Howe, niece Ollyvia Howe, brother Antonio Cloud - niece Shyla Cloud, brother Barry Cloud - niece Zariah Cloud. Including numerous cousins and all people who knew her from powwow and hand game life.

She started her journey home on August 8, 2021 with a traditional family wake, August 9, 2021 was church services at St. Ignatius Catholic Church in Ignacio Colorado, her final resting place was East Ignacio Cemetery, Ignacio Colorado.

She loved all walks of life, most of all she had the biggest heart, was always kind to everyone and loved making people laugh.

**BACA-LOPEZ** – Toniette Rea Baca-Lopez left mother earth to join her family on August 5, 2021 in Denver Colorado, she was 48 years old. Toniette Baca-Lopez was born at Mercy Medical Hospital on September 21, 1972, to Renee Cloud of Ignacio Colorado and late Father Robert "Larry" Baca of Seattle Washington. She was married to late Felipe Lopez, they have three children, Kree Lopez, Philman Lopez, granddaughter Mia Lopez and Kirsten Lopez .

Toniette graduated from Ignacio High school, after high school she attended Mesa State College in Grand Junction Colorado and Pueblo Community College in Durango Colorado. She moved back to her hometown of Ignacio Colorado, worked at CDOT, the Sky Ute Casino and Southern Ute Tribe for numerous years. She then stayed home, being

## EXPRESS YOUR OPINIONS

### UTE HISTORY BOOK

I have come to the conclusion of writing an accurate book about the Ute people of Colorado. I have worked over 30 years identifying sacred places of the Ute people, identifying the Ute trail around Colorado, seen many Ute burial tree scaffolds, Ute paint sources, bend trees, and bark scraped off as food by the Ute people during hard times.

I have given lectures to the various museums across the U.S. from the Smithsonian Museum, the Museum in Milwaukee, Wis. which houses a large native display, and the Burke Museum in Seattle, Wash. regarding the returning and proper handling of human remains, and sacred artifacts, lecturing to various colleges, universities, towns, civic groups including native tribes as well as lectures to the American Anthropological Association. (AAA) and the Society for American Archaeology (SAA) both of which have memberships of professionals from around the world.

I have trained federal and state agencies including certifying them in the Native American Graves Protection and Repatriation (NAGPRA) Act of Nov. 16, 1990, including training Tribal Historical Preservation officers. I have created a cheat sheet identifying sacred archaeological sites which includes burials, vision quest sites, paint sources, trails, the meaning of bend trees, and many other Ute sites.

Upon completion of college with a background in Museology (study of museums) and archaeology. The late Eugene Naranjo asked me to help construct a museum in the old Sky Ute Lodge. I was in charge of the display and assisted in purchasing jewelry and beadwork for the general public. Mr. Naranjo saw the need to have me trained as an appraiser as well as trained in the identification of various turquoise. The museum in the Sky Ute Lodge made a profit and was seen by many visitors around the nation.

On April 22/23, 1993, I brought all three Ute tribes back to the Glenwood Spring area as it had been 128 years when the Ute people were kicked out of the area. We held a training session on the importance of the land, protection of Ute sites around Colorado with federal agencies of the U.S. Forest Service, Bureau of Land Management (BLM), U.S. National Parks, Army Corp of Engineers, State Agencies of Colorado, Wyoming and the Dakotas regarding the management and importance of the lands they now administer.

It was at this meeting with the three Ute tribes which I was appointed as the Ute li-



aison of the three Ute tribes between the U.S. federal agencies, states, colleges, and universities by a tri-Ute resolution. Signed at this meeting was an agreement between the Ute tribes to co-manage the White River National Forest written by Bill Kight and myself which is still in effect today. I was also instructed to care for the Ute sites and various hot springs by the three tribal chairmen of the Ute tribes.

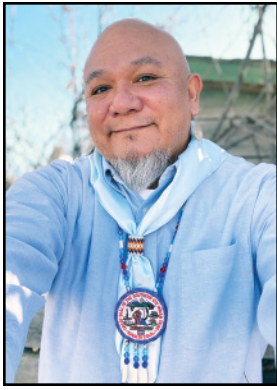
Why am I writing a book? Many books are written by non-natives. I've worked with the late Clifford Duncan who traveled to Colorado in the protection of Ute sites and the late Alden Naranjo who was six years behind me seeing the various sites I've identified. Sadly this knowledge is now gone with their passing. To the natives and museum personnel in Colorado they regard me as the authority of the lands of Colorado regarding Ute sites and history.

With the advancement in camera technology. I will attempt to go to all parts of Colorado to photograph Ute sites and document the history of the area. This will be an out-of-pocket expense for me. I realized this must be done. The Smithsonian Museum in Washington, D.C., and the Ute Museum have already asked for this book yet to be published.

May our story of the Ute people be told correctly.

*Kenny Frost,  
Citizen of the Southern Ute Tribe  
and Consultant*

## NEW EMPLOYEES



### Edward Box III

**Job title:** Food Distribution Specialist

**Description of duties:** Provides program management for the Food Distribution Program to include administrative duties, grant monitoring, eligibility determination, inventory control, distribution of commodities, and management of application process

**Hobbies:** Beading, sewing, and crafting

**Family:** Son of Eddie and Betty Box, Jr., grandson of the late Eddie & Dorothy Box, Sr.

**Tribe:** Southern Ute

### In The Southern Ute Tribal Court

Of the Southern Ute Indian Tribe • On the Southern Ute Reservation  
PO Box 737 #149, CR 517, Ignacio, CO • 970-563-0240

#### NOTICE OF PROBATE

In the Estate Of,  
**Arthur Weaver, Deceased**  
Case No.: 2021-0104-CV-PR

Notice to: Heirs, devisees, legatees, creditors and all other persons claiming an interest in said estate: The Southern Ute Indian Tribe of the Southern Ute Indian Reservation, Ignacio, CO: Greetings: Take notice that a petition has been filed in this cause, alleging that the above decedent died leaving certain assets, and asking for the determination of heirs of said decedent, the administration of said estate including the allowing of creditors of said decedent and for distribution thereof. You are notified that said cause will be set for hearing before the Tribal Court at the above address on **SEPTEMBER 20, 2021 at 2:00 PM.** All persons having claims against the above estate are required to file them for allowance with the Tribal Court at the stated address on or before the time and date of said hearing, as above set forth or said claims shall be forever barred and all persons interested in said estate are hereby notified to appear and answer said Petition and offer evidence in support of their position. The Court will proceed to hear the matter at the date and time set above, or such later time to which the matter shall be continued and to make the determination therein necessary.

Dated this 9th of August, 2021  
Marlene Price, Deputy Court Clerk

#### NOTICE OF PROBATE

In the Estate Of,  
**Rebecca Anne Thompson, Deceased**  
Case No.: 2021-0100-CV-PR

Notice to: Heirs, devisees, legatees, creditors and all other persons claiming an interest in said estate: The Southern Ute Indian Tribe of the Southern Ute Indian Reservation, Ignacio, CO: Greetings: Take notice that a petition has been filed in this cause, alleging that the above decedent died leaving certain assets, and asking for the determination of heirs of said decedent, the administration of said estate including the allowing of creditors of said decedent and for distribution thereof. You are notified that said cause will be set for hearing before the Tribal Court at the above address on **SEPTEMBER 14, 2021 at 2 PM.** All persons having claims against the above estate are required to file them for allowance with the Tribal Court at the stated address on or before the time and date of said hearing, as above set forth or said claims shall be forever barred and all persons interested in said estate are hereby notified to appear and answer said Petition and offer evidence in support of their position. The Court will proceed to hear the matter at the date and time set above, or such later time to which the matter shall be continued and to make the determination therein necessary.

Dated this 26th of July, 2021  
Paula Trujillo, Deputy Court Clerk

#### NOTICE OF HEARING

**SkyDawn Moccasin-Flower vs. Anthony Fernandez**  
Case No.: 2021-0025-CV-DV

The above mentioned parties are hereby notified that the above-entitled matter has been scheduled for DIVORCE before the above named Court on August 17, 2021 at 2:00 PM.

Dated July 13, 2021

Paula Trujillo, Southern Ute Tribal Court

#### NOTICE OF PROBATE

In the Estate Of,  
**Lillie Frost, Deceased**  
Case No.: 2021-0086-CV-PR

Notice to: Heirs, devisees, legatees, creditors and all other persons claiming an interest in said estate: The Southern Ute Indian Tribe of the Southern Ute Indian Reservation, Ignacio, CO: Greetings: Take notice that a petition has been filed in this cause, alleging that the above decedent died leaving certain assets, and asking for the determination of heirs of said decedent, the administration of said estate including the allowing of creditors of said decedent and for distribution thereof. You are notified that said cause will be set for hearing before the Tribal Court at the above address on August 24, 2021 at 3:00 PM. All persons having claims against the above estate are required to file them for allowance with the Tribal Court at the stated address on or before the time and date of said hearing, as above set forth or said claims shall be forever barred and all persons interested in said estate are hereby notified to appear and answer said Petition and offer evidence in support of their position. The Court will proceed to hear the matter at the date and time set above, or such later time to which the matter shall be continued and to make the determination therein necessary.

Dated this 1st of July, 2021.  
Paula Trujillo, Deputy Court Clerk

#### NOTICE OF HEARING ON PETITION FOR CUSTODY, AND SUMMONS TO APPEAR BY PUBLICATION

In the Interest Of,  
**Case No. 20-CU-157**

Somer Autumn Cloud (dob 8/26/10), and Jada Jewel Cloud (dob 10/21/11), Minor Children, AND CONCERNING THE PETITION OF: Alex S. Cloud, Petitioner Father, v. Jesusa Cloud, Respondent Mother. TO: JESUSA CLOUD, RESPONDENT, Pursuant to Section 2-1-103(2)(d) of the Southern Ute Tribal Code, you are notified that the Petitioner has filed in this Court a Petition Seeking A Determination of Custody of the Two Named Children. You are hereby summoned and required to appear and defend against the claims of Petitioner filed with the court by filing with the Court Clerk an answer or other response within twenty-one (21) days after service of this summons upon you, or before your hearing date of December 6, 2021, at 9:00 A.M. Service will be complete on the day of the last publication. A copy of the Complaint may be obtained from the Court Clerk. A hearing on custody is set for **December 6, 2021 at 9 A.M.** in the Court location above. If you fail to answer, or appear for said hearing, the Court may terminate or modify your custody rights as to the two children and grant the relief sought by Petitioner. On the hearing date, you should bring with you all books, papers, witnesses needed by you to establish any defenses you might have to Petitioner's claims. If you wish to present a counterclaim, you must pay a fee of \$50.00. Attorney for Petitioner: David Liberman, Esq., 1099 Main Ave., Suite 312, Durango, CO 81301, Phone 970-375-6265; E-mail: dliberman@animas.net

### GREEN CHILI FEST NEEDS YOUR HELP!

The Green Chili Fest needs your help! The 5th annual Green Chili Fest is coming up Saturday, September 4. Whooo-hoooo!

This year we have performances by Tyler Gummersall and Kate Willyard as well as the Secret Circus Society. (Who doesn't love a good juggler?) Along with our Green Chili Cookoff (Will Carlos keep his reigning title?), the Beer Garden and Corn Hole Tournament. We are asking for your sponsorships so we can keep this event accessible to everyone in our community - without an entrance fee. With your help, we can keep this wonderful event growing each and every year bringing locals and visitors together to our amazing town!

Our sponsorship levels are Hottest (for \$300), Hot (\$200), Medium (\$100) and Mild (\$50). Larger sponsorships will be

listed on the poster (must be in by August 9th) and all will be announced at the Chili Fest. (Although we know name dropping isn't your style - we do want to the community to know how much we appreciate your support - while you are sampling the amazing green chili!)

For banner and poster sponsors: Deadline is August 9 - But we will still happily accept donations after Aug 9.

Your donation will go towards the live music and circus entertainment for the kids. And if we our donations are big enough? Maybe a banner across Goddard we've been dreaming about for five years.

Thank you in advance. Any and every donation is much appreciated. Look forward to another Fabulous Green Chili Fest!

*Happy Chili Tasting,  
Ignacio Chamber of Commerce*

### EDITOR'S NOTE: ALL LETTERS PUBLISHED IN THE SOUTHERN UTE DRUM ARE PUBLISHED AS SUBMITTED AND DO NOT REFLECT THE OPINION OF THE SOUTHERN UTE DRUM OR THE SOUTHERN UTE INDIAN TRIBE IN ANY WAY.

The Southern Ute Drum encourages letters from readers on any topic. We ask that letters be 500 words or less. Letters deemed to be libelous will not be published. Letters should be submitted by email to Jeremy Shockley at jshockley@southernute-nsn.gov by the end of the day Monday preceding publication.

## Drum Deadline

Next issue  
**Aug. 27**

Deadline  
**Aug. 23**

Articles, photos, advertisements, public notices, letters and greetings may be submitted in person, by mail, or by email to: jshockley@southernute-nsn.gov

### THE SOUTHERN UTE DRUM

A biweekly newspaper owned and operated by the Southern Ute Indian Tribe on the Southern Ute Indian Reservation in Ignacio, Colo.

**SUBSCRIPTION RATES: \$29 per year • \$49 two years**  
**PHONE: 970-563-0100 • DIRECT: 970-563-0118**  
**TOLL FREE: 1-800-772-1236 • FAX: 970-563-0391**

**MAILING ADDRESS**  
The Southern Ute Drum: PO Box 737 #96, Ignacio, CO 81137

**PHYSICAL ADDRESS**  
356 Ouray Drive, Leonard C. Burch Building, Ignacio, CO 81137

**STAFF EXTENSIONS & EMAIL ADDRESSES**  
The Southern Ute Drum (sudrum@southernute-nsn.gov)  
Jeremy Shockley • Editor, ext. 2255 (jshockley@southernute-nsn.gov)  
Robert Ortiz • Composition Tech., ext. 2253 (rortiz@southernute-nsn.gov)  
McKayla Lee • Reporter/Photographer, ext. 2252 (mlee@southernute-nsn.gov)  
Trennie Collins • Admin. Assistant/PR Coordinator, ext. 2251 (tcollins@southernute-nsn.gov)

**The Southern Ute Drum does not assume responsibility for unsolicited material and does not guarantee publication upon submission.**

Published biweekly and mailed 1st class from Ignacio, Colo.  
Printed by the Farmington Daily Times in Farmington, N.M.  
The Southern Ute Drum is a member of the Native American Journalists Association, the Society of Professional Journalism and the Colorado Press Association.



## REQUEST FOR PROPOSALS

### Commercial Window/Exterior Surface Cleaning Service

Window cleaning contractors are hereby notified and invited to submit proposals for this service located within the exterior boundaries of the Southern Ute Indian Tribe. Scope of Work requires minimum of 10 years of experience in commercial and residential window cleaning (minimum 5 years of experience with mechanical lifts). Desired services include cleaning windows on commercial building that are 3 or more floor levels, clean residential windows that are 2 or more floor levels, and cleaning specialty exterior building surfaces. Reliable scheduling, guaranteed availability, adherence to COVID guidelines, and insurance coverage are required. Contracting Preference for Indian Owned Businesses and Indian preference in hiring for all companies, in accordance with the Southern Ute Indian Tribe's TERO code will apply. Inquiries to Stacy Toppin, Southern Ute Growth Fund-Facilities Department; by phone: 970-749-1798, or e-mail: stoppin@sugf.com. Bid Proposal Response due no later than 10 a.m. on Aug. 25, 2021.

## REQUEST FOR PROPOSALS

### Licensed Plumbing Contractor Service

Licensed plumbing contractors are hereby notified and invited to submit proposals for this service located within the exterior boundaries of the Southern Ute Indian Tribe. Scope of Work requires a licensed plumbing contractor that can perform residential and commercial maintenance plumbing service. Desired services include drain and sewer line maintenance service, repair and replacement of plumbing fixtures, installation of appliances. Reliable scheduling, guaranteed availability, adherence to COVID guidelines, and insurance coverage are required. Contracting Preference for Indian Owned Businesses and Indian preference in hiring for all companies, in accordance with the Southern Ute Indian Tribe's TERO code will apply. Inquiries to Stacy Toppin, Southern Ute Growth Fund-Facilities Department; by phone: 970-749-1798, or e-mail: stoppin@sugf.com. Bid Proposal Response due no later than 10 a.m. on Aug. 25, 2021.

## REQUEST FOR PROPOSALS

### General Maintenance Contractor Service

General maintenance contractors with construction experience are hereby notified and invited to submit proposals for this service located within the exterior boundaries of the Southern Ute Indian Tribe. Scope of Work requires combined 10 years of experience in general residential and commercial construction and maintenance. Desired services include repair and replacement of concrete, rough framing and finish carpentry materials, insulation, drywall, flooring surface materials, with general excavation experience. Reliable scheduling, guaranteed availability, adherence to COVID guidelines, and insurance coverage are required. Contracting Preference for Indian Owned Businesses and Indian preference in hiring for all companies, in accordance with the Southern Ute Indian Tribe's TERO code will apply. Inquiries to Stacy Toppin, Southern Ute Growth Fund-Facilities Department; by phone: 970-749-1798, or e-mail: stoppin@sugf.com. Bid Proposal Response due no later than 10 a.m. on Aug. 25, 2021.

## REQUEST FOR PROPOSALS

### Licensed Electrical Contractor Service

Licensed electrical contractors are hereby notified and invited to submit proposals for this service located within the exterior boundaries of the Southern Ute Indian Tribe. Scope of Work requires a licensed electrical contractor that can perform residential and commercial electrical maintenance service (minimum of 7 years of experience). Desired services include repair and replacement of electrical equipment, testing of electrical safety equipment, installation of appliances. Reliable scheduling, guaranteed availability, adherence to COVID guidelines, and insurance coverage are required. Contracting Preference for Indian Owned Businesses and Indian preference in hiring for all companies, in accordance with the Southern Ute Indian Tribe's TERO code will apply. Inquiries to Stacy Toppin, Southern Ute Growth Fund-Facilities Department; by phone: 970-749-1798, or e-mail: stoppin@sugf.com. Bid Proposal Response due no later than 10 a.m. on Aug. 25, 2021.

## REQUEST FOR PROPOSALS

### Commercial Floor & Duct Cleaning Service

Commercial floor and duct cleaning contractors are hereby notified and invited to submit proposals for this service located within the exterior boundaries of the Southern Ute Indian Tribe. Scope of Work requires combined 7 years of experience in residential and commercial floor and duct cleaning service. Desired services include cleaning commercial and residential flooring services of all types and duct cleaning to include dryer vents and HVAC vents. Reliable scheduling, guaranteed availability, adherence to COVID guidelines, and insurance coverage are required. Contracting Preference for Indian Owned Businesses and Indian preference in hiring for all companies, in accordance with the Southern Ute Indian Tribe's TERO code will apply. Inquiries to Stacy Toppin, Southern Ute Growth Fund-Facilities Department; by phone: 970-749-1798, or e-mail: stoppin@sugf.com. Bid Proposal Response due no later than 10 a.m. on Aug. 25, 2021.

## FINANCE DEPARTMENT NOTICE

### Early Cut-Off for Minors Birthday Distributions

Requests received after the published cut off will be processed the following week.

\*\*Unless listed the cutoff for a Friday Minors distribution is 5 p.m. on Tuesday.

- Distribution, Friday, Oct. 29: NOON, Monday, Oct. 25, 2021
- Distribution, Wednesday, Nov. 10: NOON, Friday, Nov. 5, 2021
- Distribution, Wednesday, Nov. 24: NOON, Friday, Nov. 19, 2021
- Distribution, Thursday Dec. 9: NOON, Monday, Dec. 6, 2021
- Distribution, Thursday, Dec. 20: NOON, Friday, Dec. 17, 2021

## Southern Ute Indian Tribe/

### State Of Colorado Environmental Commission Vacancy

Tribe-Appointed Member of the Southern Ute Indian Tribe/State of Colorado Environmental Commission. Closing Sept. 13, 2021 5 p.m. (MST). Commission Purpose: Establish rules and regulations applicable to the Reservation Air Program; and Review appealable administrative actions taken by the Tribe. Summary of Commission Duties: Determine air programs that should apply to the Reservation; Promulgate rules and regulations necessary for proper implementation and administration of air programs that apply to the Reservation, including determining which administrative actions are appealable to the Commission; Establish procedures for the Commission to follow in promulgating rules and regulations and review appealable administrative actions taken by the Tribe; Review and approve the long-term plan; Monitor relationships among State and tribal environmental protection agencies; Review administrative actions by the Tribe; Approve and adopt fees for permits and other regulatory services conducted by the Tribe or the State; Ensure consistency and adherence to applicable standards and resolve disputes involving third parties; Review emission inventories developed by the Tribe and State Conduct public hearings pertaining to adoption of rules and regulations or review of appealable administrative actions, and issue subsequent orders. Request administrative or clerical assistance from tribal staff when necessary to issue orders and conduct Commission business; and Any other duties necessary to accomplish the purposes of the Intergovernmental Agreement between the Southern Ute Indian Tribe and the State of Colorado Concerning Air Quality Control on the Southern Ute Indian Reservation. Commission Member Appointment Terms and Conditions: Commission members are appointed by the Tribal Council. Commission members serve three year terms and are not subject to term limits. Commission meetings are generally held twice per year but more frequent meetings are possible. Stakeholder meetings occur on an as-needed basis. Meetings are to be held in person or on virtual meeting platforms. Failure to attend two consecutive Commission or Stakeholder meetings or demonstrated unethical conduct may result in appointment removal by Tribal Council. Compensation is \$100.00 per half-day meeting for Commission members who are not employees of the Tribe. Supervisor approval is required, if employed by the Southern Ute Indian Tribe. Meeting Location: Justice & Regulatory Administration Building. EPD Large Conference Room, 71 Mike Frost Way, Ignacio, CO 81137 Or Virtual Meeting Platform. How to Apply: Send letter of interest and approval letter from supervisor to the: Air Quality Program Office, C/O Marlene Scott-Jewett, PO Box 737 MS# 84, Ignacio, CO 81137 Or Hand deliver to: Justice & Regulatory Administration Building, Air Quality Program, Marlene Scott-Jewett, 71 Mike Frost Way, Ignacio, CO 81137 Or Email: airquality@southernute-nsn.gov

## Notice Of Draft

### Title V Operating Permit and Request For Comment

Notice is hereby given that a significant Title V permit revision application and a Title V renewal application have been submitted to the Southern Ute Indian Tribe's Environmental Programs Division's Air Quality Program, P.O. Box 737 MS#84, Ignacio, Colorado 81137, for the following sources of air pollution:

**Applicant: Harvest Four Corners, LLC**  
**Facility: Ignacio Gas Plant, Section 36, T34N R9W, 8.5 miles west of Ignacio, Colo.**  
**Significant permit revision**

The Air Quality Program (AQP) has prepared the draft Title V operating permits based on the information submitted by the applicants. The draft permits and accompanying statement of basis are available on the AQP's website at [http://www.southernute-nsn.gov/environmental-w/air-qual-](http://www.southernute-nsn.gov/environmental-w/air-qual-ity/air-permitting/)

ity/air-permitting/, and at the Environmental Programs Division office at 71 Mike Frost Way, Ignacio CO, 81137 between 8 a.m. and 4 p.m., Monday through Friday. Any interested person may submit written comments on the draft permit and request a hearing. Written comments and requests for hearings may be sent to the AQP in care of Danny Powers, Air Quality Program Manager, at P.O. Box 737 MS#84, Ignacio, Colorado 81137; or emailed to [dpowers@southernute-nsn.gov](mailto:dpowers@southernute-nsn.gov). Any hearing request should: 1) identify the individual or group requesting the hearing, 2) state his or her address and phone number, and 3) state the reason(s) for the request. Notice of any public hearing will be provided at least 30 days in advance of the hearing. The AQP will consider the written public comments and requests for a hearing that are received within 30 days of this notice.



## Southern Ute Indian Tribe 2021 General Election

### TWO (2) TRIBAL COUNCIL

The Election Board has determined these dates for the upcoming General Election according to the Southern Ute Indian Tribe Constitution and Election Code.

**General Election – Friday, November 5, 2021, from 7:00 a.m. to 7 p.m. at 285 Lakin Street, Ignacio, Colo.**

<b>General Election Residency Deadline</b>	<b>Saturday, August 7, 2021</b>
<b>Statement of Intention Deadline</b>	<b>Monday, September 6, 2021 by 5 p.m.</b>
<b>Election Board Decision Regarding Eligibility Deadline</b>	<b>Tuesday, September 21, 2021</b>
<b>Notice of Election</b>	<b>Wednesday, October 6, 2021</b>
<b>Voter Registration Deadline</b>	<b>Wednesday, October 27, 2021 by 5 p.m.</b>
<b>Absentee Ballot Deadline Date</b>	<b>Wednesday, October 27, 2021 by 5 p.m.</b>
<b>Emergency Absentee Ballot Deadline</b>	<b>Thursday, November 4, 2021 by 5 p.m.</b>

Call the Election Board at 970-563-2303 or 2305/2729/2728. Email: [election@southernute-nsn.gov](mailto:election@southernute-nsn.gov)  
Off Reservation Tribal Members Telephone: 1-800-772-1236 ext. 2303

## SOUTHERN UTE ELECTION BOARD OFFICE HOURS

Election Board will resume normal hours of Mon-Fri 8 a.m. to 5 p.m. in August 2021

To contact Election Board:

- [election@southernute-nsn.gov](mailto:election@southernute-nsn.gov)
- Natalie Richards (970) 563- 2305
- Joyce Delaware-Ford (970) 563-2303
- Michelle Chavez (970) 563- 2729
- Gibran Silva (970) 563- 2728



## SOUTHERN UTE INDIAN TRIBE Boards, Committees and Comissions Vacancies

### APPRENTICE PROGRAM COMMITTEE

Open until filled – The Southern Ute Indian Tribe (Tribe) and Apprentice Program Committee has three (3) vacancies. The Committee shall include employees of the Tribe who have a level of expertise and familiarity with the goal of tribal member mentoring and employment to make a positive contribution to both the committee and to the objectives of the program. At large members for the Committee can also be considered. A majority of the Committee shall be tribal members. Members serve on a voluntary basis. It is the policy and intent of the Tribe that the Apprentice Program Committee be appointed to administer an Apprenticeship program that provides higher education, training, on-the-job experience, and mentoring to eligible tribal members. All interested Southern Ute tribal members, who would like to serve on this committee are urged to submit a letter of intent to the Human Resources Dept. at PO Box 737, Ignacio, CO 81137, or in person at the Leonard C. Burch Tribal Administration Building.

### BOYS & GIRLS CLUB BOARD

Open until filled – The Boys & Girls Club of the Southern Ute Indian Tribe is seeking a volunteer Board Member positions. A majority of the committee shall be tribal members. The Board of Directors is responsible for knowing and effectively articulating the mission, vision, core values, goals, policies, and program areas of the Club. Members of the Board must attend meetings regularly and attend applicable committee meetings on a regular basis; also attend a minimum of one priority event and one Club event annually. Members must maintain confidentiality of sensitive information and conduct oneself as a model for children in a manner that exemplifies high character. Interested parties must pick up an application available on the [www.bgcsu.org](http://www.bgcsu.org) website or by request from Mr. Bruce LeClaire at 970-563-2694 or [bleclair@southernute-nsn.gov](mailto:bleclair@southernute-nsn.gov). Applications must be returned to Mr. LeClaire.

### GAMING COMMISSION

Open Until Filled – The Southern Ute Gaming Commission is seeking (2) Full time and (1) Alternate positions, must be Southern Ute Tribal Members. One Full-time Gaming Commission position term is 2 years 6 months. Second Full Time Gaming Commission position 11 month term. One Alternate Gaming position is a 3 year term. Applicants must possess the following attributes pursuant to the Regulation One of the Gaming Commission Rules and Regulations: Applicants must be at least twenty-one years of age; Applicants must possess a basic knowledge and understanding of gaming activities authorized on the Southern Ute Indian reservation; Applicants must have experience or expertise in regulatory matters or in administrative hearing procedures; Applicants must have the ability to observe restrictions concerning conflicts of interest and confidentiality; Applicants must submit an application form and a letter of interest explaining why the applicant wishes to be appointed to the Commission; and Applicants must undergo a background investigation. Applications may be obtained at the Division of Gaming Office – Licensing in the West Wing of the Justice Complex, 149 County Road 517, Ignacio, Colorado, 81137. Applications and letter of interest are required to be turned into the Division of Gaming Office. Questions? Call the Division of Gaming at 970-563-0180.

### JOHNSON O'MALLEY COMMITTEE

Open until filled – JOM has TWO (2) vacant seats that need filling. If you are interested, please submit a letter to Ellen Baker at the Southern Ute Education Dept. or if you have any question you can contact her at 970-563-0235. Email: [esbaker@southernute-nsn.gov](mailto:esbaker@southernute-nsn.gov). Requirements: Two-year term; Meet once a month as a committee; You must have a student(s) attending Ignacio and/or Bayfield School District K-12 (enrolled in JOM program); Write a letter of interest on why you would like to be a part of the committee; and What changes do you want to see in order to help our JOM students?



### Southern Ute Growth Fund • Job announcements

Please visit our website at [www.sugf.com/jobs.asp](http://www.sugf.com/jobs.asp) for full job details and to apply online.  
Tribal Member employment preference • Must pass pre-employment drug test/background check.  
Southern Ute Growth Fund, Human Resources • P.O. Box 367 • Ignacio, CO  
Phone: 970-563-5064 • Job hotline: 970-563-5024.

#### Financial Reporting Manager – SUGF Accounting & Finance (Ignacio, CO)

Closing 8/30/21 – Supports all aspects of routine and non-routine accounting, coordinating external and internal auditing processes, and reporting processes and projects; reviews and analyzes accounting pronouncements, both FASB and GASB related, and determines the impact on Growth Fund business entities; serves as an accounting expert in advising Growth Fund management, Controller and business entities on complex accounting issues. Assisting in the development of Growth Fund accounting policies.

### Southern Ute Shared Services • Job announcements

Please visit our website at [www.southernute.com/careers](http://www.southernute.com/careers) for full job details and to apply online.  
Tribal Member employment preference • Must pass pre-employment drug test/background check.  
Southern Ute Growth Fund, Human Resources • P.O. Box 367 • Ignacio, CO  
Phone: 970-563-5064 • Job hotline: 970-563-5024.

#### Vice President Applications Development – SUSS (Ignacio, CO)

Closing 8/13/21 – Strategic direction, development and implementation of IT applications, and applications systems analysis and programming activities that enable the organization's business processes. Includes the internal application development of PeopleSoft Human Capital Management (HCM), Finance and Supply Chain Management (FSCM), Business Intelligence, Business Analytics, Budgeting Planning and Consolidation, Web Development, Geographic Information Systems, Microsoft 365, Microsoft Azure and all other enterprise applications where necessary. Manages IT professionals who design/adapt application software. Application development may include both systems analysis and custom programming and configuration of packaged products created by third parties.

#### Business Intelligence Developer I – SUSS (Ignacio, CO)

Closing 8/20/21 – Performing data analysis, develops reports in Microsoft Power BI and SSRS, and contributes to the design and deployment of data models and assists in administration of the Microsoft BI infrastructure including Power BI Report Server and SQL Server environments.

#### Web Developer I – SUSS (Ignacio, CO)

Closing 9/3/21 – Under general direction of the Web and SharePoint Development Supervisor, performs Web application development project work for Tribal entities including security, support, content management, maintenance, development, and training. Assists other SUSS staff as needed in system operation and maintenance to meet information needs.

### Sky Ute Casino Resort • Job announcements

Visit our website at [www.skyutecasino.com](http://www.skyutecasino.com) to view job openings and apply online.  
Human Resources • Phone: 970-563-1311 • PO Box 340, Ignacio, CO 81137  
TERO-Native American Preference • All Applicants Welcome  
Must pass pre-employment drug test, background check, qualify for and maintain a Division of Gaming License and be able to work all shifts, weekends or holidays.

#### Casino Housekeeping Staff (Full-time)

Cleaning all public areas including Casino floor, public restrooms, restaurant, lobby, offices and employee break rooms. Must be at least 21, a High School Diploma or equivalent is preferred, previous experience in hospitality or retail field requires, previous cleaning or motel/hotel housekeeping experience preferred, must be able to work all shifts including nights, weekends, and holidays, must be able to lift and move 50 lbs., must be able to sit, stand, walk, bend, climb, kneel, crouch, and crawl throughout shift.

#### Count Team Staff

Retrieves, counts, and calculates the daily revenue produced by the Gaming Revenue Departments. Pulls the containers and counts or verifies the funds according to the regulatory requirements and procedures set by the Southern Ute Division of Gaming's Internal Control Minimum Procedures and the Sky Ute Casino Resort. Must be at least 21, must have a High School Diploma or GED, cash handling experience preferred, must have reliable transportation, must have excellent attendance, must be able to lift up to 75 lbs, must be able to bend, kneel, squat, twist, scoot, push, pull, and tug throughout the shift, must be able to stand in an enclosed room for as many as 5 hours at a time, must have manual dexterity and be physically flexible.

#### Deep Cleaning Staff (Full-time)

Cleanliness of the entire kitchen as instructed by the Facilities Manager and/or Supervisor. Will clean Food and Beverage facilities and equipment. Must be 18, High School Diploma or GED preferred, must be able to lift 60 pounds, must be able to bend, squat, kneel, crouch, stoop, walk and stand for entire shift, must be able to work with standard cleaning solutions and detergents.

#### Facilities Staff (Full-time)

Operation of equipment, environmental condition and appearance of the facility and grounds. Cleanliness, maintenance and repair of the facility, equipment and building. Assists in repair and maintenance of equipment within the facility. Cleanliness of kitchen areas and equipment, facility equipment, carpets, building and grounds. Shuttles Hotel guests to and from the airport as needed. Must be at least 18 years old, must have a High School Diploma or equivalent, must be able to work all shifts including nights, weekends and holidays. Must have a valid driver's license and must be insurable with the Southern Ute Indian Tribe.

#### Facilities Supervisor (Full-time)

Reports to the Facilities Manager and was established for the purpose/s of supervising individual shifts to include facility and deep cleaning staff within the maintenance department. Coordinating all repair and alterations of the property including the exterior and grounds and to work in conjunction with facility technicians. Must be at least 21, must have a High School Diploma or equivalent, must have at least 4 years-experience in a maintenance department of similar size and scope, must have previous experience operating a building automation system, must have a valid driver's license and be insurable by the Southern Ute Indian Tribe, required to read, interpret, and utilize technical information.

#### Front Desk Staff

Providing quality guest services that include reservations, registration and check-out, PBX operations, mail and message service for hotel

guests. Responds to telephone and in person inquiries regarding reservations, hotel information and guest concerns. Assistance with guests include but is not limited to: luggage assistance, directions/maps, driving guests to/from the airport. Must be at least 18, must have a High School Diploma or GED, previous experience in Hotel Front Desk preferred, must have 3 months of previous customer service, must have a valid driver's license and be insurable with the Southern Ute Indian Tribe, must be able to work all shifts including nights, weekends, and holidays, must be able to stand and walk for at least 5 hours at a time.

#### Kitchen Utility Steward

Will perform multiple tasks and duties within the entire kitchen as instructed by Food and Beverage Management and/or Supervisor. Washing dishes, cleaning facilities and cooking in a number of capacities. Must be at least 18, High School Diploma or GED preferred, must follow established personal hygiene guidelines and report to work clean and well groomed, must have reliable transportation, must be able to work all shifts including nights, weekends, and holidays, must be able to lift and move up to 60 lbs., must be able to bend, squat, kneel, and stoop throughout each 8-10 hour shift, must be able to sit, stand, and walk for prolonged periods, must be able to stand on tiled, rubber mat, and carpeted floors for extended periods.

#### Room Attendant (Full-time)

Thoroughly cleaning hotel guest rooms and performing routine duties individually or as a pair, in a fast-paced work environment. Cleaning hotel room by wiping, washing, scrubbing, vacuuming, sweeping and mopping all areas of the guest rooms. Must be able to bend, lift, stand and walk throughout the shift. Must be at least 18, High School Diploma or GED preferred experience preferred, must be able to work in a team environment and work with minimal supervision. Must be able to work all shifts including nights, weekends, and holidays.

#### Security Officer (Full-time)

Safeguarding the assets of the Sky Ute Casino Resort and the Southern Ute Indian Tribe. Ensures that all company policies and internal control procedures are followed. Responsible for guest and employee safety on property. Must be 21, must have a High School Diploma or GED, must have a minimum of 2 years experience in law enforcement, security, or related field, must have the ability to ensure a safe environment in the Casino, must be able to work all shifts including nights, weekends, and holidays.

#### Slot Operations Floor Person

Providing excellent guest service to all slot guests and ensures that all gaming devices are monitored on a continual basis for full capacity operation. Reports to the Slot Floor Manager or designee. Assists guests with slot machine usage; educates them regarding play, wagers, pay tables, etc. Generates jackpot slips at jackpot workstations using the on-line Automated Slot System (Oasis), the New Wave Manual System or the Locked Dispensing Machine as appropriate. Notifies slot staff or other Casino personnel of guest needs and requests; follows up to ensure a positive guest experience. Verifies and/or signs for slot payouts and delivers winnings to guests. Must be at least 21 years old, must have a High School Diploma or equivalent, a minimum of 1 year of customer service experience required.

### Southern Ute Indian Tribe • Job announcements

Visit the the tribe's website at [www.southernute-nsn.gov/jobs](http://www.southernute-nsn.gov/jobs) for complete job descriptions. If you need help filling out an online application, please come the Human Resources office and we are happy to assist you on our applicant computer stations.

#### ALL EMPLOYMENT APPLICATIONS ARE TO BE SUBMITTED ONLINE

Applicants and employees, be sure the HR Dept. has your current contact information on file. Human Resources accepts applications for temporary employment on an ongoing basis. Southern Ute Indian Tribe, Human Resources • P.O. Box 737 - Ignacio, CO 81137  
Phone: 970-563-0100 ext. 2424 • Fax: 970-563-0302 • Hotline: 970-563-4777

#### Administrative Assistant II, Culture Department (Southern Ute member only)

Closes 8/13/21 – Provides administrative support for the Culture Department, including secretarial duties, filing, clerical and information system support, including office records management services. Starts at \$16.88/hour.

#### Boys & Girls Club Aide (Part Time)

Closes 8/23/21 – Assists in the implementation, planning, and supervision of activities provided within the Boys & Girls Club (BGC) program. Grade N4: \$12.32/hour.

#### Patrol Officer II

Closes 8/20/21 – Patrols the Southern Ute Indian Reservation and is responsible for preserving the life and property of all citizens within the Tribal Community. Grade N13: \$23.81/hour. Sign on Bonus offered based on years of experience. Potential housing available with employment.

#### Patrol Officer Trainee

Closes 8/18/21 – Trainee position for uncertified individuals interested in a career in law enforcement with the Southern Ute Indian Tribe. Will be required to attend and successfully complete an approved basic police-training course. Upon completion of the required trainings and certifications, incumbent will assume the position of Patrol Officer.

#### Addictions Counselor

Open Until Filled – Under general supervision of the Lead Therapist, provides outpatient substance abuse treatment and education for individuals enrolled in the Substance Abuse Program. Grant funded; continued employed is contingent on grant funds. Starts at \$21.75/hour.

#### Construction Crew Leader

Open Until Filled – Supervises assigned construction repairmen and provides repairs to eligible clients' homes. Grade N9: \$16.88/hour.

#### Construction Services Repairman

Open Until Filled – Assists in home repair to Tribal Home Rehab Programs, Elders Maintenance Program, Tribal Member and Elderly/Handicapped Emergency Repair, and Tribal Rental Units. Starts at \$14.48/hour.

#### Custodian

Open Until Filled – Daily cleaning of Southern Ute Indian Tribe Buildings and offices. Grade 5: \$12.54/hour.

#### Distance Learning Specialist

Open Until Filled – Works in coordination with Tribal Organizations, Universities, Colleges, local schools, and community members to provide long distance telecommunications educational resource information and classes for the Southern Ute Indian Tribe and assists the Academic Advisor in supporting associate degree students. Grade 11: \$41,456.65/year.

#### Elementary Teacher

Open Until Filled – A professional teaching position with the Private Education Department. Uses the Montessori philosophy to provide Southern Ute Indian Montessori Academy students with a developmentally appropriate learning environment meeting the physical, social/emotional, cognitive, and cultural needs of the child. Communicate effectively with parents/guardians about their child's progress in each domain area. Starts at \$41,456.65/year.

#### Group Exercise Instructor

Open Until Filled – Provides group exercise instruction and fitness activities to members of the Sun Ute Community Center, in accordance with the guidelines established and approved by Fitness Director and/or Community Center Director. Grade N8: \$15.61/hour.

#### HVAC Technician

Open Until Filled – Provides maintenance support, troubleshooting, and preventative maintenance on commercial heating, ventilating, and air conditioning systems including machinery, boilers, hot and chilled water distribution sys-

tems, circulation pumps, steam humidifiers, cooling towers, walk-in coolers and freezers, and variable volume systems located in Southern Ute Tribal Buildings. Starts at \$26.21/hour.

#### Lands Technician

Open Until Filled – Provides technical and clerical support to the Lands Division and provides general information to the Tribal Membership and general public regarding land status issues, Crossing Permits, and general land management related issues. Starts at \$15.61/hour.

#### Language & Culture Educator (Part-time) – Ute members only (So., Ute Mtn., or No.)

Open Until Filled – Assists Tribal Members, staff, clients, and the community in reaching the goals and objectives of the Cultural Preservation Department. Teaching the Ute history, culture, and folklore through the language and culture curriculum and instruction.

#### Lifeguard (Full-time/Part-time)

Open Until Filled – Lifeguard activities at the Community Recreation Center swimming pool, in accordance with the guidelines established and approved by Fitness Director and/or Community Center Director. Starts at \$12.54/hour.

#### Loan Coordinator

Open Until Filled – Provides clerical, secretarial, and client support to the Tribal Credit Division as needed. Presents positive and professional image to Tribal employees and the public. Grade N8: \$15.61/hour.

#### Part-time Dentist (with Benefits)

Open Until Filled – Providing, clinical, health promotion and disease prevention, and educational services for the Dental Division.

#### Patrol Officer I

Open Until Filled – Patrols the Southern Ute Indian Reservation and is responsible for preserving the life and property of all citizens within the Tribal Community. Starts at \$21.75/hour.

#### Payroll Manager

Open Until Filled – Complete and accurate preparation of multi-state payroll, including paychecks, payroll tax filings, year-end reports, and other related payroll information in a timely manner, assuring consistency and adherence to federal regulations, and applicable state and local regulations, as well as policies and procedures. Starts at \$60,370.75/year.

#### Receptionist (Part-time)

Open Until Filled – Assuring an efficient entry and exit point for members of the Community Center, to include providing reception duties to the public by telephone and in person, greeting, screening and assisting customers, monitoring member access control, and maintaining class registration. Starts at \$12.54/hour.

#### TEAM Worker (So. Ute tribal member only)

Open Until Filled – The TEAM program is an opportunity for enrolled Southern Ute Tribal Members to find temporary employment within the various departments of the Southern Ute Indian Tribe. Both part-time and full-time temporary positions.

#### TERO Worker

Open Until Filled – Under the supervision of the TERO office. It is an opportunity for enrolled Southern Ute Tribal Members and other local Native Americans to find temporary employment within the various departments of the Southern Ute Indian Tribe. Both part-time and full-time temporary positions.

#### Tribal Water Attorney

Open Until Filled – Under the supervision of the Legal Department Director, will serve as a member of the Tribe's Legal Department, with principal responsibility for representing the Tribe on water matters. Where time allows, will represent the Tribe in other matters that require the Legal Department's attention, including code review and drafting, litigation, contract review, and employment matters.

### Ute Mountain Ute Personnel Dept.

Attention: We prefer all applications by email [Carla.Cuthair@utemountain.org](mailto:Carla.Cuthair@utemountain.org) or [cayetoo@utemountain.org](mailto:cayetoo@utemountain.org) or fax to 970-564-5528. Thank you.

#### Job Openings as of August 9, 2021

- Public Works, Transfer Station Operator – Closing 8/13/21
- Public Works, Maintenance Supervisor – Closing 8/13/21
- Social Service, Receptionist – Closing 8/13/21
- Social Service, Adult Outreach – Closing 8/13/21
- Echo, Full-time Camera Operator/Photographer – Closing 8/13/21
- Public Safety, Full-time Security – Closing 8/13/21
- Human Resource, Full-time Representative – Closing 8/13/21
- Child Development Center, Full-time Daycare Teacher – Closing 8/20/21
- Tribal Parks, Secretary – Closing 8/20/21
- Higher Education, Director – Closing 8/20/21
- WM-Education, Interventionist – Closing 8/20/21
- WM-Education, Public School Liaison – Closing 8/20/21
- WM-Education, Adult Education Coach – Closing 8/20/21
- Gaming Commission, Auditor – Closing 8/20/21

### Ignacio School District

- High School Special Education Teacher
- High School Cheer Coach
- Assistant Baseball Coaches

**Substitute Teachers** – Ignacio School District is accepting applications for Substitute Teachers. Applicant must hold a current substitute license through the Colorado Department of Education. For a substitute license apply at [www.cde.state.co.us/cdeprof/Licensure\\_SubApp](http://www.cde.state.co.us/cdeprof/Licensure_SubApp). Salary is \$110 per day.

Positions are open until filled.  
Application, job descriptions and salary schedules at [www.isgncioschools.org](http://www.isgncioschools.org)

## FLY FISHING

# The wait was worth it

By Don Oliver  
SPECIAL TO THE DRUM



Remember when waiting for Christmas morning to arrive seemed like it took an eternity. You hoped that that long package was a new bamboo fly rod, or the small package held the keys to a new bass boat. I know many of my friends think I'm delusional, at this age, to believe such things could happen, but I do. Since neither of those items appeared on Christmas morning, my next hope was that the Southern Ute Indian Tribe would open the Reservation to fishing in 2021, and they did. Proof positive, if you believe in Christmas, you won't get nymphs and strike indicators in your stocking.

I have been fly fishing on the Reservation for over 25 years and truly appreciate the Tribe allowing non-tribal members the privilege of enjoying their rivers and lakes. When it was announced the reservation waters were opening, after the Tribe's closures due to Covid, the rivers were still high and fast. So, my friend and fly fishing partner, Kim, and I headed to Lake Capote to do some fly fishing from our float tubes.

Lake Capote hadn't seen much pressure in over a year, and there were an abundance of fish, bass and trout, that hadn't seen many flies in over a year. Plus, the newly stocked fish seemed fairly clueless that dry flies were not real food. The bass went after poppers of various sizes and colors, while the trout really liked hoppers

and woolly buggers. Kim cast the buggers until I convinced her to try a popper. After a couple of bass on a popper the buggers stayed in her box.

Since many of the fish were over two years old and hadn't seen many artificial flies cast to them over the past year, we were treated to a great day of fly fishing. The bass and trout were large and aggressive. I hope they stay that way.

As the rivers slowed and cleared up, we made our way to the Piedra River. We fished at Fosset Gultch #3 and had a good day. This is not unusual when fishing on the Reservation. One of the reasons is the lack of pressure from other people fly fishing. While fishing the Piedra we did not see one other person fishing. That's not say I haven't seen other people, but it's not unusual to have large sections of the river to yourself. While we didn't catch as many fish as we did on Lake Capote, there were trout to be had. I stayed with my dry flies, while Kim switched from nymphs to dries, then back to nymphs. Neither

of us found a pattern that the trout would eat consistently, so pattern changes were frequent. That's why it's good to have a variety of patterns in different sizes and colors with you at all times.

Our next venture, with another friend, was the Animas River at Weasleskin Bridge. The area downstream from the bridge had us catching small rainbows on both dry flies and nymphs; see if you can guess who the dry fly fisherman was. As the morning wore on, we made our way upstream. As one moves upstream, you'll find longer, slower-moving sections of the river. Here we caught larger fish. Again, the fish hadn't seen any fly fishers in a year, so they were not shy about taking a fly. Also, while Weasleskin Bridge is close to town, and easily accessed, we did not see another person.

As summer ends, and fall begins, my two friends and I will be fly fishing more of the Animas and Piedra rivers and Lake Capote. Also, the Pine and San Juan Rivers, on the Reservation, have numerous locations to fish. I suggest you get a copy of the 2021-2022 fishing proclamation for the Southern Ute Indian Reservation. Then plan as many days as you can fit into your fly fishing schedule to enjoy the fly fishing on the Reservation. You'll be glad you did. Oh yea, don't forget, you have to have a Southern Ute license to fish the rivers. For Lake Capote you just need a day-use permit, obtained at the lake. Have fun.

## VOLLEYCATS FACING TRAVEL • FROM PAGE 16

State contention with a 3-0 sweep at the 2A-Region VI Championships. Runners-up to DHS in the 2A SJBL race, Telluride (6-2 2A SJBL, 9-3 2A/1A SJBL, 11-5 overall) will visit IHS Gymnasium Sat., Sept. 11, before the 'Cats (3-5, 6-5, 6-7) begin preparing for a challenging 9/18 road match at Dove Creek.

Tops amongst the San Juan Basin's 1A-level programs in Spring '21, the Lady Bulldogs (6-0 1A SJBL, 10-0 2A/1A SJBL) finished 12-3 overall after losing to

the Stratton-Joes Liberty co-op in the 1A-Region V Championships.

Dolores at last comes calling the afternoon of Tues., Sept. 21, prior to Ignacio packing up for a Simla spectacle known for attracting top-flight 2A and/or 1A (SHS checked in at No. 2 in the preseason 1A rankings) resistance.

After returning from far-off Elbert County, IHS will begin October hosting Ridgway (4-4 2A SJBL, 7-6 2A/1A SJBL, 7-7 overall), Nucla (3-3 1A SJBL,

5-6 2A/1A SJBL, 6-7 overall), and Mancos (0-8 2A SJBL, 2-10 2A/1A SJBL, 2-11 overall) on, respectively, the 1st, 2nd and 7th, before then journeying on the 15th to Norwood, to THS the next day, and to PSHS on the 21st.

Norwood (3-3 1A SJBL, 3-8 2A/1A SJBL, 4-10 overall) is then slated to visit Ignacio on the 22nd, with Dolores then awaiting the Volleycats on the 26th – just prior to their eastward Greenhorn Valley excursion for the Oct. 29-30 Rye Invite.

**SEVEN RIVERS**  
STEAKS • SEAFOOD • SPIRITS

**IS NOW OPEN!**  
WEDNESDAY - SUNDAY, 5PM - 10PM.

RESERVE YOUR TABLE TODAY!  
Call 970.563.7777 or make a reservation on Open Table.

**SKY UTE CASINO RESORT**  
**REOPENS TABLE GAMES**  
**THURSDAY, JULY 22, 2021**

Sunday & Thursday,  
**2PM-MIDNIGHT**  
Friday & Saturday,  
**2PM-2AM**  
Closed Monday, Tuesday & Wednesday

Games open will be 3-Card Poker, Blackjack and Roulette. Craps will remain temporarily closed.

## The Southern Ute Drum's Crossword Puzzle

1	2	3	4		5	6	7	8	9	
10					11					12
13					14					
15				16			17			
				18		19	20			
21	22	23		24					25	
26			27				28			
29						30		31	32	33
34				35	36		37			
38							39			
	40							41		

- |   |   |
|---|---|
| <b>Across</b>   | <b>Down</b>   |
| 1 Benjamins and sawbucks, for example                   | 1 --- Tower (San Francisco landmark)                            |
| 5 Signs of healing                                      | 2 Golden Fleece ship  |
| 10 Black and white whale                                | 3 Man with a kilt   |
| 11 Agreement  | 4 Seraglio  |
| 13 "Firebird" composer --- Stravinsky                   | 5 Plant juice   |
| 14 Carelessly rig pen as a sonar device                 | 6 Long-running CBS crime series                                 |
| 15 Tribal symbol  | 7 "City in --- Globe" (Before Their Eyes song)                  |
| 17 Skin-care brand                                      | 8 "--- in the Lord and rejoice" (Psalm 32)                      |
| 18 People a k a Fox                                     | 9 Moves stealthily  |
| 21 Baste, perhaps                                       | 12 --- on for size  |
| 24 Sling spirit   | 16 It means a million   |
| 25 "Spring ahead" hrs.                                  | 19 "--- Degrees of Separation"                                  |
| 26 Crowning events                                      | 20 Leg joint  |
| 29 Truncated-cone-shaped candy                          | 21 Fragment   |
| 30 Role model for younger Utes                          | 22 Gets hitched in a hurry                                      |
| 34 Self-assurance                                       | 23 Bird found on the East and South coasts, till we sort it out |
| 37 Days gone by   | 27 Temperamental  |
| 38 Carolina culture                                     | 28 With subterfuge  |
| 39 Cut of beef or pork                                  | 31 Condemn  |
| 40 Genre  | 32 Musician --- Clapton   |
| 41 "A place you can go when you're short on your dough" | 33 --- Sofer of "The Bold and the Beautiful"                    |
|   | 35 "Air America" star --- Gibson                                |
|   | 36 Spelling contest   |

Answers for this crossword will appear in August 27 issue of the Drum.

### Answers for July 31, 2021 Crossword Puzzle

**Across:** 1 Lusts, 6 Skip, 10 On the, 11 Anna, 12 Odium, 13 Dogs, 14 Norris, 16 Coca, 18 Sneak out, 20 PPE, 23 Alb, 24 Dam, 25 Mogollon, 28 Sign, 29 Slough, 33 NCAI, 35 Idled, 36 Tugs, 37 Stand, 38 Spam, 39 Hones.

**Down:** 1 Loon, 2 Undo, 3 Stir, 4 Thurs, 5 Seminal, 6 Sad, 7 Knock, 8 In good, 9 Pascua, 15 Sells, 17 ATM, 19 Abolish, 20 Pms, 21 Points, 22 Eggcup, 26 Onaga, 27 Nod to, 30 Ulan, 31 Gene, 32 HDDs, 34 Ism.

## Air Quality in real time!

Friendly reminder – you can visit the Southern Ute Indian Tribe's Environmental Programs Division Ambient Air Quality Monitoring page to find updates on aiwr quality throughout the Southern Ute Indian Reservation as well as real-time EPA Air Quality Index health forecasts.

Link to the Tribe's Air Quality Stations below:

[www.southernute-nsn.gov/justice-and-regulatory/epd/air-quality/ambient-monitoring/](http://www.southernute-nsn.gov/justice-and-regulatory/epd/air-quality/ambient-monitoring/)

## LOCAL IGNACIO WEATHER

Your weekend forecast!

Friday, Aug. 13



87°F mostly sunny  
50% chance showers/t-storms in p.m.

Saturday, Aug. 14



86°F mostly sunny  
40% chance showers/t-storms in p.m.

Sunday, Aug. 15



86°F partly cloudy  
Chance showers/t-storms in p.m.

Weather forecasts collected from [www.weather.gov](http://www.weather.gov)

