

THE CITIZENS OF TALLAHASSEE



THE CITY COMMISSION



MEMBERS OF THE CITY COMMISSION (L TO R):
 Commissioner Jeremy Matlow
 Commissioner Dianne Williams-Cox
 Mayor John E. Dailey
 Commissioner Jacqueline "Jack" Porter
 Mayor Pro Tem Curtis Richardson

CITY OF TALLAHASSEE

ORGANIZATIONAL VALUES

- Honor public trust through ethical behavior
- Provide exceptional citizen service
- Lead with integrity at every level
- Collaborate to reach common goals
- Invest in employee excellence
- Promote equity and celebrate diversity



REESE GOAD
CITY MANAGER



DENNIS R. SUTTON
INSPECTOR GENERAL



AMY M. TOMAN
CITY ATTORNEY



JIM COOKE
CITY TREASURER-CLERK



CHRISTIAN DOOLIN
ASSISTANT CITY MANAGER



ABENA OJETAYO
ASSISTANT CITY MANAGER



CYNTHIA BARBER
DEPUTY CITY MANAGER



WAYNE TEDDER
ASSISTANT CITY MANAGER



KAREN JUMONVILLE
ASSISTANT CITY MANAGER



ANGELA HENDRIETH
CHIEF DIVERSITY OFFICER
OFFICE OF DIVERSITY & INCLUSION



TONY GUILLEN
GENERAL MANAGER
ELECTRIC & GAS UTILITY



ALISON FARIS
DIRECTOR
COMMUNICATIONS



JAMES BARNES
CHIEF CUSTOMER OFFICER
CUSTOMER OPERATIONS



PATRICK TWYMAN
DIRECTOR
FINANCIAL SERVICES



TIM DAVIS
DIRECTOR
TECHNOLOGY & INNOVATION



ROB MCGARRAH
INTERIM DIRECTOR
HUMAN RESOURCES



KIMBALL THOMAS
DIRECTOR
HOUSING & COMMUNITY RESILIENCE



ASHLEY EDWARDS
DIRECTOR
PARKS, RECREATION & NEIGHBORHOOD AFFAIRS



DAVID ODOM
DIRECTOR
CDA



DAVID POLLARD
DIRECTOR
AVIATION



UBIE BRANTLEY
DIRECTOR
FACILITIES



JOHN REDDICK
DIRECTOR
GROWTH MANAGEMENT



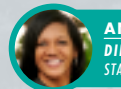
STEVE SHAFER
DIRECTOR
UNDERGROUND UTILITIES & PUBLIC INFRASTRUCTURE



VERONICA MCCRACKIN
DIRECTOR
PROCUREMENT



THOMAS WHITLEY
DIRECTOR
STRATEGIC INNOVATION



ANGELA BALDWIN
DIRECTOR
STARMETRO



JEFF SHEPARD
DIRECTOR
FLEET



LAWRENCE REVELL
CHIEF OF POLICE



GENE SANDERS
CHIEF OF FIRE



ARTIE WHITE
DIRECTOR
PLACE



GENERAL MANAGER
GOLF COURSES



ALISSA MEYERS
DIRECTOR
ENVIRONMENTAL SERVICES



JOHN POWELL
DIRECTOR
CITY CONSTRUCTION



REGINALD OFUANI
DIRECTOR
COMMUNITY BEAUTIFICATION & WASTE MANAGEMENT