

# THE ALL NEW ŠKODA OCTAVIA



**ŠKODA**  
SIMPLY CLEVER





**INTRODUCTION** <sub>4</sub>

**EXTERIOR DESIGN** <sub>6</sub>

**LIGHT DESIGN** <sub>12</sub>

**INTERIOR DESIGN** <sub>16</sub>

**PERFORMANCE** <sub>22</sub>

**SAFETY** <sub>26</sub>

**CONNECTIVITY** <sub>30</sub>

**SIMPLY CLEVER** <sub>36</sub>

**STORAGE** <sub>42</sub>

**COMFORT AND CONVENIENCE** <sub>46</sub>

**TECHNICAL SPECIFICATIONS** <sub>58</sub>

**DIMENSIONS** <sub>62</sub>



# WHAT IS IT ABOUT THE NEW ŠKODA OCTAVIA?

Since its Indian debut in 2001, the ŠKODA OCTAVIA has gone from redefining premium, to setting new benchmarks. Made of smart imagination, the all new ŠKODA OCTAVIA effortlessly combines strength and sensibility with never-seen-before features.

With an exterior design that is sleek as well as sporty, the ŠKODA OCTAVIA looks stunning from every angle.

It embodies more than our philosophy of making beautifully designed cars. Inside, brilliant connectivity, safety assists, technological innovations and smart features are sure to please the modern, discerning Indian. It is an example of how imagination, when pushed ahead of the curve, can lead to something exemplary.

The new ŠKODA OCTAVIA. Made of smart imagination.





# EXTERIOR DESIGN







# EMOTIONS IN MOTION

The ŠKODA OCTAVIA embodies the design trend of the ŠKODA brand: a fusion of aesthetics, safety and practicality. Whether you see the car as a whole or step closer and explore its unique features, the ŠKODA OCTAVIA radiates with the harmony of functionality and emotion.



## ŠKODA BRAND

As a badge of honour, the ŠKODA name proudly embraces the 5<sup>th</sup> door.

## STYLE AND FUNCTIONALITY

The car features dynamic lines, balanced proportions and distinctive features such as the front grille and headlights in the shape of an arrow. The fog lamps are also unmistakable. In addition to their utility functions, they play a key design role.





#### FRONT VIEW

Bi LED headlamps give the car an unmistakable look. Their exceptional design is a perfect match for the sharp edges of the fog lamps. The massive front grille with a distinctly shaped bonnet commands respect.



#### REAR VIEW

In the rear, you will discover many elements that are typically ŠKODA along with the distinctive brand lettering and model name.





**LIGHT DESIGN**



# TIME TO SHINE

Advanced technology is made beautiful in the light design of the ŠKODA OCTAVIA. The car features full LED headlights, which offer greater road lighting and a higher degree of safety.



## HEADLIGHTS AND FOG LAMPS

In exterior lights, the unique ŠKODA Crystal design is combined with an innovative solution. The headlights also feature Adaptive Frontlight System created by a projection module in combination with a side light reflector. The system adapts the lighting to the steering wheel position. The excellent functionality of the fog lamps is powered by LED technology.

## REAR LIGHTS

The full LED rear lights are fitted with animated turn indicators, which not only reveal where the driver is about to turn, but also add dynamism to the car. The rear lights also feature decorative elements, typical for the ŠKODA family. While the C-shaped illumination is updated with a modern twist, crystalline elements reference the Czech crystal glass-making tradition.







# INTERIOR DESIGN





#### STYLE AND FUNCTIONALITY

The car features a newly designed multifunctional 2-spoke leather steering wheel, which allows you to control the infotainment system, phone, DSG and Virtual Cockpit. Steering wheel is height and length adjustable and has paddle shifters at the back.

#### COMFORT AND SPACE

ŠKODA's craftsmanship is confidently presented inside. Surrounded by high-quality materials, you'll enjoy the ride no matter where you sit. The exceptionally spacious interior offers lots of legroom and headroom for the whole crew.







## DASHBOARD

The new ŠKODA OCTAVIA's dashboard is beautifully decorated with Suede leather and stitching along with a Glossy Black décor running across the dashboard, which brings a unique style to the interior.





**PERFORMANCE**



# POWER TO THE PEOPLE

The ŠKODA OCTAVIA's design invites you to discover more. Do that and find out what's under its bonnet. You will always find the power that fits you without compromising on performance or efficiency.



## ENGINES

The ŠKODA OCTAVIA is powered by a potent 2.0 litre 4-cylinder TSI engine. With 190 PS on tap, the engine impresses with its performance and delights with its refinement. It is engineered to offer high performance.



## SHIFT BY WIRE

The first car from the ŠKODA brand, the ŠKODA OCTAVIA comes with shift by wire technology and electric parking brake. The DSG shift by wire is controlled by a shift lever in a minimalist design integrated in the centre console.





**SAFETY**



# SAFE HAPPENS

In extreme situations, where the driver cannot actively influence the outcome, the car's passive safety elements - like the 8 airbags - take over.



### FRONT AND REAR SIDE AIRBAGS

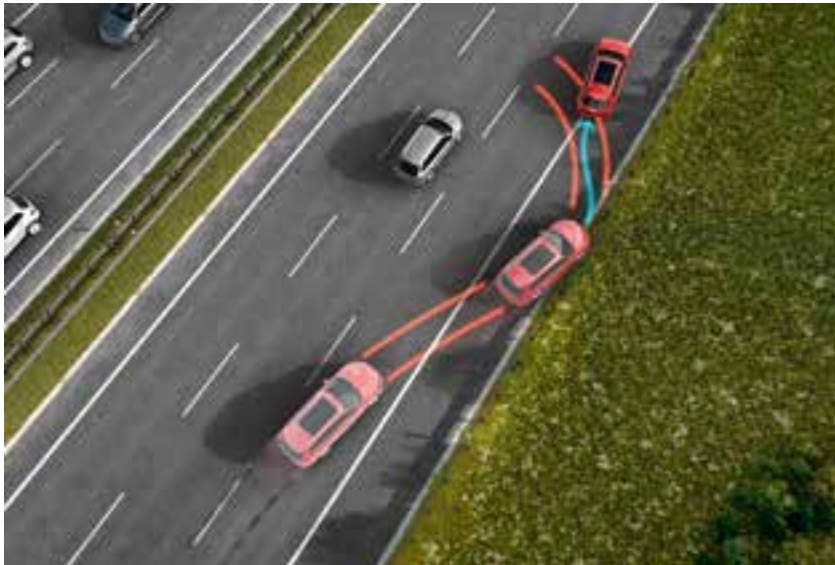
These four airbags protect the pelvis and chest of the driver and other passengers in the event of a side collision.

### FRONT DRIVER AND PASSENGER AIRBAGS

While the driver airbag is enclosed in the steering wheel, the passenger airbag is located in the dashboard.

### CURTAIN AIRBAGS

A critical safety feature, curtain airbags offer much needed protection to the head in the event of a collision.

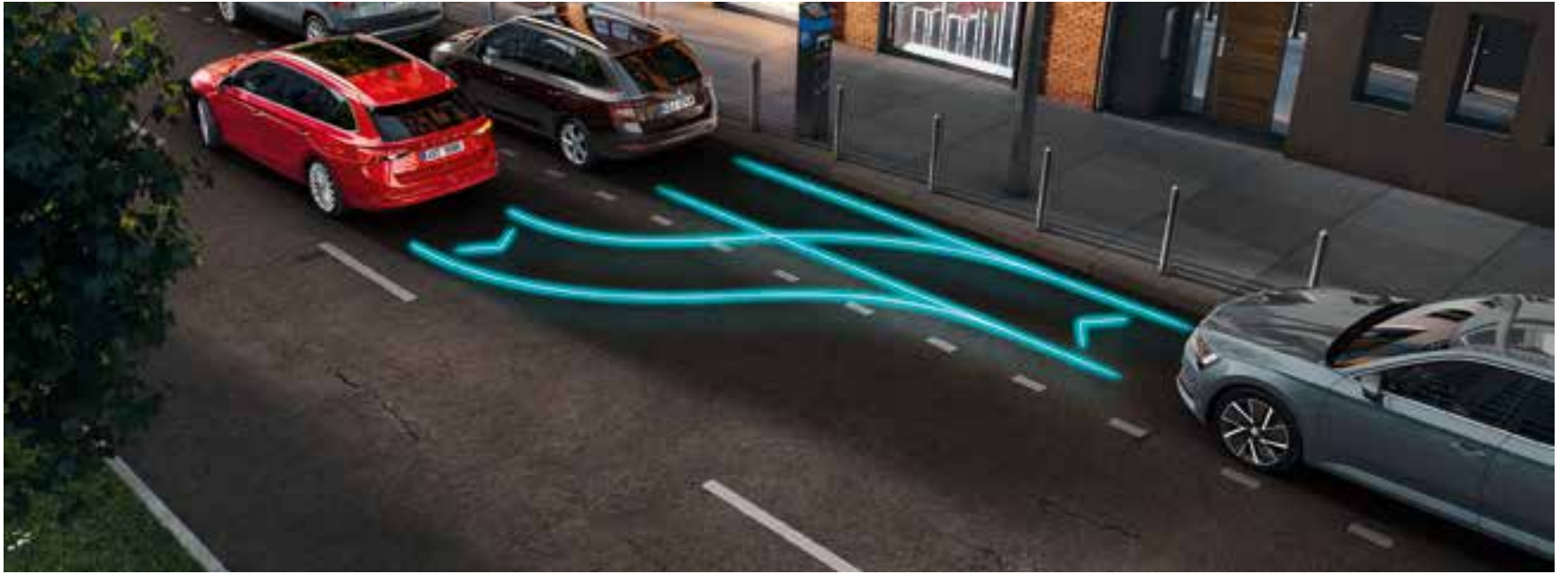
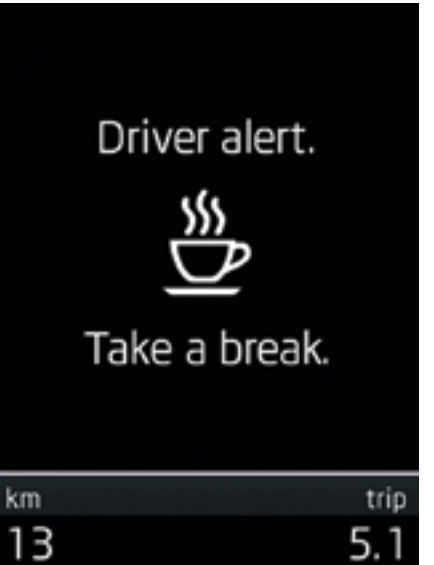


### MULTI-COLLISION BRAKE

In case of an accident, the Multi-Collision Brake starts braking to prevent further uncontrolled movement of the vehicle, thus reducing the likelihood of further collisions.

### IBUZZ FATIGUE ALERT

This clever assistant system evaluates data from the power steering sensors to detect any driver fatigue behaviour. In such cases, the Virtual Cockpit warns the driver to take a break.



### PARK ASSIST

Minimise the hassle of parking in tight spots with Park Assist, which automatically selects an appropriate parking place in a row of parallel or perpendicularly parked vehicles. The updated Park Assist function now means that it can just be used for part of the parking manoeuvre.





**CONNECTIVITY**



# MyŠKODA CONNECT: TAKE THE ONLINE WORLD WITH YOU

To be online fully and permanently means not only having access to entertainment and information, but also possible assistance while on the move. ŠKODA Connect is your gateway to a world of unlimited communication possibilities.



## MyŠKODA CONNECT ONLINE SERVICES

The MyŠKODA Connect mobile online services can be accessed at any time via the MyŠKODA Connect app. MyŠKODA Connect displays a clearly laid out Vehicle Health Report on the smartphone. The system automatically stores important data every time the ignition is switched off. Remote vehicle access is also available, which allows owners to retrieve vehicle information and driving data, including the car's parking location for instance.



## SMARTLINK\*

With the SmartLink system (ŠKODA Connectivity bundle supporting MirrorLink®, Apple CarPlay, and Android Auto), the car's infotainment system enables the driver to safely use the phone while driving. Plus, all installed applications that are certified as safe for vehicles are compatible with MirrorLink®, Apple CarPlay, or Android Auto.

\*Wireless SmartLink works on select handsets





### 25.4 CM INFOTAINMENT SYSTEM

Attractive design is accompanied by perfect functionality. The 25.4 CM infotainment system display enables touch slider operation, where you don't need to touch the screen while adjusting the volume. Below the display, it also provides an ergonomic wrist rest when operating the screen.



### CANTON SOUND SYSTEM

Enjoy absolute sound clarity, whether it's music or the spoken word, from the Canton sound system with twelve speakers, including a subwoofer in the luggage compartment.



### VIRTUAL COCKPIT

A perfect overview is provided by the digital instrument panel which can display on-board computer specifications in combination with other information.



**SIMPLY  
CLEVER**





# GENIUS IS IN THE DETAILS

Simply Clever solutions make your life easier. The practical storage compartments take the headache out of travelling.



**WELCOME LOGO**  
The LEDs located on the underside of the front doors, creating the ŠKODA inscription, illuminate the entry area as well.

**DOUBLE POCKET**  
Organise your things even better with double pockets on the back of the front seats. Hide your notebook or laptop into the bigger pocket and your mobile phone into the smaller one.

**CARGO ELEMENTS**  
To avoid any undesired movement of luggage while driving, these two plastic cargo elements with a Velcro fastener are ideal.





#### ROLLER BLINDS

Mechanical roller blinds for the rear side windows, plus for the 5<sup>th</sup> door glass, significantly increase passenger comfort in the rear seats on sunny days.



#### REMOTE FOLDING SEATS

The rear seats can be folded using a remote release button located in the luggage compartment, which will make loading the car even more effortless.



#### USB-C IN THE REAR VIEW MIRROR

Equipped for the dash cam that can be attached to the USB-C near the rear view mirror



#### NET PROGRAMME - PARTITION

Thanks to the partition, the side vertical net will always be open, so you have easy access to transported items. You will also appreciate this feature when transporting flowers, for example.





**STORAGE**



# STORAGE

Your XXL attitude requires XXL capacity. But it wouldn't be a true ŠKODA if it wasn't accompanied by XXL practicality. You can find many smart features inside the ŠKODA OCTAVIA's boot, which will help you load all your stuff, keep the car tidy and prevent things from moving around.



## CAPACITY

As always, the luggage compartment is generous. The ŠKODA OCTAVIA offers 600 litres and 1 555 litres after folding down the rear seats.

## JUMBO BOX

Small electronic devices can be safely stored in the jumbo box in the front armrest.



## FRONT DOOR COMPARTMENTS

You will find a 1.5 litre bottle holder in a spacious compartment in the front door. This is also where you can place a removable waste basket.



## UMBRELLA STORAGE COMPARTMENTS

Two ingenious compartments with a ŠKODA original umbrella in one of them, are fitted inside both front doors. They are designed to let water drain away from the car, keeping the interior dry.





**COMFORT AND  
CONVENIENCE**



# HIGH-TECH, HIGH COMFORT

Sometimes it's good to let yourself be spoiled. While driving, for example. Plenty of thoughtful technologies and smart features are here at your command, ready to maximise your comfort and driving pleasure. Just put your foot down.



## ELECTRICALLY-CONTROLLED 5<sup>TH</sup> DOOR AND VIRTUAL PEDAL

The electrically-controlled 5<sup>th</sup> door opens and closes at the mere touch of the button on the remote control, central panel or directly on the 5<sup>th</sup> door. You can also adjust the upper door position to suit your needs. The door is equipped with a Virtual Pedal enabling contact-free access.







#### WIRELESS CHARGER / USB\*

The wireless charger wirelessly charges your phone while driving. This compartment is not only easily accessible but is also suitable for large display devices. Two USB-C data ports located in the centre and rear console allow you to easily connect and pair your external devices with the infotainment system.

\*Works with select smartphones



#### KESY

With the new version of the KESY (Keyless Entry, Start and exit System) all doors can be used to unlock or lock the car.



### AMBIENT LIGHTING

Experience ultimate comfort thanks to the interior lights. LED ambient lighting, which can offer you many amazing colour options, includes lights running along the inside of the car. Foot area illumination is available on front and rear.



### DUAL-ZONE CLIMATRONIC

Air-conditioning in the new ŠKODA OCTAVIA is controlled via the infotainment system display because, in the spirit of modern developments, the classic buttons on the centre console have been removed entirely.



### ELECTRICALLY-ADJUSTABLE FRONT SEATS

Maximum comfort for the driver and front passenger is ensured by the electrically-adjustable front seats with memory function.



**READING LIGHTS WITH INTENSITY CONTROL**

You can easily adjust the light intensity by holding your hand under the reading lights.

**REAR-VIEW CAMERA WITH WASHER**

Enjoy easier parking by equipping your car with the rear-view camera located on the handle of the 5<sup>th</sup> door. It monitors the space behind the car and indicates driving lanes, based on the vehicle width.

**UPHOLSTERY****BEIGE SUEDE LEATHER****WHEELS**

**L&K: PULSAR 43.18 CMS (R17) AERO BLACK ALLOY WHEELS**



**STYLE: ROTARE 43.18 CMS (R17) ALLOY WHEELS**





# COLOURS

## ŠKODA OCTAVIA LAURIN & KLEMENT



BRILLIANT SILVER



MAPLE BROWN



CANDY WHITE



LAVA BLUE



MAGIC BLACK

## ŠKODA OCTAVIA STYLE



CANDY WHITE



LAVA BLUE



MAGIC BLACK



# TECHNICAL SPECIFICATIONS

TECHNICAL DESCRIPTION	TSI (A)	
<b>Engine</b>		
Engine type	Turbocharged petrol engine with direct injection system	
Cylinders	4	
Displacement [cm3]	1 984	
Max. power/revs [kW(PS) at rpm]	140(190)/4 180-6 000	
Max. torque/revs [Nm at rpm]	320/1 500-3 990	
Fuel consumption - rule 115 of CMVR [kmp/l]	15.81	
<b>Transmission</b>		
Wheel drive	Front wheel drive	
Transmission	Automatic 7-speed DSG, with Tiptronic manual gear changing	
<b>Chassis</b>		
Front axle	MacPherson suspension	
Rear axle	Multilink suspension, one longitudinal and three transverse arms	
Braking system	Hydraulic dual-diagonal circuit braking system	
Brake – front	Disc brakes	
Brake – rear	Disc brakes	
Steering type	Electro mechanic power steering	
Wheels	6.5J x 17 H2 ET 46 (Style), 7J x 17 H2 ET 46 (L&K) 6.5J x 16 H2 ET 46 (Spare wheel Style), 3.5J x 18 H2 ET 25.5 (Spare wheel L&K)	
Tyres	205/55 R17, 91V, 205/60 R16, 92H (Spare wheel Style), 125/70 R18 99M (Spare wheel L&K)	
<b>Outside Dimensions</b>		
Length [mm]	4 689	
Width [mm]	1 829	
Height [mm]	1 469	
Wheel base [mm]	2 680	
Ground clearance (solo) [mm]	137	
Ground clearance (laden condition) [mm]	106	
<b>Inside Dimensions</b>		
Storage capacity [l]	600	
<b>Weight</b>	<b>STYLE</b>	<b>LAURIN &amp; KLEMENT</b>
Kerb weight [kg]	1 430	1 459
Gross weight [kg]	2 017	2 017
<b>Liquids</b>		
Tank capacity [l]	50	
<b>Performance</b>		
Turning circle diameter [m]	10.4	

EQUIPMENT	STYLE	L&K
<b>DESIGN</b>		
<b>Wheels</b>		
Alloy wheels 43.18 cm (R17), Pulsar Black	-	■
Alloy wheels 43.18 cm (R17), Rotare	■	-
<b>Exterior Chrome Package</b>		
Chrome surround for radiator grille	■	■
Chrome side window frames	■	■
Chrome trim on lower air dam in front bumper	-	■
'Laurin & Klement' inscription on front fenders	-	■
<b>Colour Coding</b>		
Body colour - bumpers, external mirrors housing and door handles	■	■
<b>Interior Chrome Package</b>		
Chrome front door sill trims with 'OCTAVIA' inscription	-	■
Alu pedals	-	■
Chrome interior door handles	■	■
Chrome trim on front central air conditioning vents	■	■
Chrome trim around Virtual Cockpit	■	■
<b>Interior Décor</b>		
Piano Black décor on dashboard	■	■
LED ambient lighting	■	■
<b>Illumination</b>		
Adaptive front LED headlamps with crystalline elements and LED turn indicators	-	■
LED headlamps	■	-
LED daytime running lights	■	■
Front LED fog lights with corner function	■	■
LED tail lights with crystalline elements and dynamic turn indicators	■	■
Rear fog light	■	■
High level third brake LED light	■	■

EQUIPMENT	STYLE	L&K
<b>Visibility</b>		
Automatically dimming interior mirror and driver side external rear view mirror	■	■
Driver side external mirror and rear windscreen defogger with timer	■	■
Front doors ŠKODA welcome logo projection	■	■
Boarding spot lamps (OSRVM)	■	■
<b>SAFETY</b>		
<b>Braking &amp; Stability</b>		
ABS (Anti-lock Braking System)	■	■
ESC (Electronic Stability Control)	■	■
EBD (Electronic Brake force Distribution)	■	■
MKB (Multi Collision Brake)	■	■
HHC (Hill Hold Control)	■	■
HBA (Hydraulic Brake Assist)	■	■
Electromechanical parking brake with Auto Hold Function	■	■
<b>Traction</b>		
ASR (Anti Slip Regulation)	■	■
EDS (Electronic Differential Lock)	■	■
<b>Tyre Pressure</b>		
TPM (Tyre Pressure Monitoring)	-	■
<b>Park Distance Control</b>		
Parktronic sensors at front and rear	■	■
Parktronic speaker at front and rear	■	■
Rear view camera with washer and dynamic guidelines	■	■
<b>Airbags</b>		
Dual front airbags	■	■
Curtain airbags at front and rear	■	■
Side airbags at front	■	■



EQUIPMENT	STYLE	L&K
Side airbags at rear	-	■
<b>Occupant Restraint</b>		
Front seatbelt reminder warning light with acoustic signal	■	■
Height adjustable three-point seatbelts at front	■	■
Height adjustable head restraints at front	■	■
Three three-point seatbelts at rear	■	■
Three height adjustable head restraints at rear	■	■
Two Isofix child-seat preparations on outer rear seats	■	■
<b>Undercarriage Protection</b>		
Underbody protective cover and Rough Road Package	■	■
<b>More</b>		
iBuzz Fatigue Alert	-	■
Fuel supply cut-off in a crash	■	■
Door-open indicator	■	■
Dual-tone warning horn	■	■
Child-proof rear window and door locking	■	■
Emergency triangle in the luggage compartment	■	■
<b>SECURITY</b>		
<b>Electronic Theft Deterrence</b>		
Engine immobiliser with floating code system with central locking controls on front centre console	■	■
<b>Remote Operation</b>		
Remote control key	■	■
Remote control locking and unlocking of doors and boot lid	■	■
Remote control opening and closing of windows	■	■
Remote control closing of door mirrors	■	■
KESSEY - Keyless Entry for all 4 doors, Start and exit System with engine start/stop button	■	■
Electrically controlled opening and closing of 5 <sup>th</sup> door	-	■
Virtual boot lid release pedal	-	■

EQUIPMENT	STYLE	L&K
<b>COMFORT</b>		
<b>Seats</b>		
12-way electrically adjustable front seats with lumbar support and programmable memory functions	-	■
12-way electrically adjustable driver seat with lumbar support and programmable memory functions	■	-
Height adjustable front centre armrest	■	■
Rear seat centre armrest with foldable cup holder	■	■
<b>Upholstery</b>		
Suedia Beige leather upholstery	■	■
Suedia Beige finish on dashboard with stitching	■	■
Leather wrapped steering wheel	■	■
<b>Entertainment</b>		
ŠKODA audio player with 25.4 cm LCD TFT colour display and touchscreen controls	■	■
Central infotainment system with proximity sensor and touch slider for volume control	■	■
Canton sound system - 11 speakers, 1 subwoofer (610 W)	-	■
8 speakers	■	-
Audio controls on steering wheel	■	■
SmartLink *	■	■
Voice command control	■	■
GSM telephone preparation with Bluetooth®	■	■
Bluetooth® audio streaming	■	■
<b>Climate Control</b>		
2-zone Climatronic with AirCare function	■	■
Adjustable rear air conditioning vents	■	■
Rear AC vents under front seats	■	■
<b>Footrest</b>		
Textile floor mats	■	■
<b>Windows</b>		
Front and rear electrically adjustable windows	■	■

EQUIPMENT	STYLE	L&K
One-touch operation	■	■
Anti pinch bounce-back system	■	■
Roll-up sun visors for rear windows and rear windscreen	-	■
<b>CONVENIENCE</b>		
Smartphone wireless charger*	-	■
<b>Gear-shift Operation</b>		
Gear-shift selector on steering wheel	■	■
<b>Display</b>		
Virtual Cockpit	■	■
<b>Electronic Driving Aid</b>		
Cruise control	■	■
Automatic front wiper system with rain sensor	■	■
Hands-free parking	-	■
<b>Interior Illumination</b>		
Automatic LED illumination of driver and passenger vanity mirrors	■	■
Diffused footwell LED lighting front and rear	■	■
LED reading lights at front and rear	■	■
<b>Electrical Power Outlets</b>		
2 C-Type USB chargers in front center console	■	■
2 C-Type USB chargers in rear center console	-	■
1 C-Type USB charger in IRVM	-	■
12V power socket in the luggage compartment	■	■
<b>More</b>		
Two foldable roof handles, in the front and rear	■	■
Lights-on acoustic signal	■	■
<b>STORAGE</b>		
<b>Luggage Compartment</b>		
600 litres of luggage compartment space	■	■
1 555 litres of total luggage space with rear seatbacks folded	■	■

EQUIPMENT	STYLE	L&K
Two foldable hooks in luggage compartment	■	■
6+4 load anchoring points in luggage compartment	■	■
Rear seat centre armrest with through-loading	■	■
60:40 split and completely folding rear seat backrest	■	■
<b>Passenger Compartment</b>		
Front glovebox with cooling and illumination	■	■
Jumbo box – storage compartment under front centre armrest	■	■
Felt lined storage compartments in the front and rear doors	■	■
Storage compartments in the front and rear centre console	■	■
Storage pockets on backrests of front seats	■	■
<b>SIMPLY CLEVER</b>		
Wet case in both front doors	■	■
Cargo elements	-	■
Rear parcel shelf	■	■
Easy opening bottle holder in front centre console	■	■
Storage compartment under steering wheel	■	■
Ticket holder on A pillar	■	■
Mobile phone pockets on the backs of the front seats	■	■

- Standard equipment
- Not available
- \* Works with select smartphones only.



# DIMENSIONS







### 4-Year ŠKODA Warranty

- > 4 Years/1 00 000 km manufacturer-backed additional warranty
- > Promotional offer applicable in 3<sup>rd</sup> and 4<sup>th</sup> year up to a maximum mileage of 1 00 000 km, it remains with the vehicle even after changing hands

### 4-Year ŠKODA Assist

- > Exclusive 24x7 non-stop assistance service for 4 years, unlimited km
- > Assistance on-the-go any time of the day or night and anywhere in India

### 4-Year ŠKODA Maintenance Package

- > 4 Years/60 000 km, 4 periodic maintenance services at the interval of 15 000 km or one year (whichever comes first)
- > Benefits redeemed at all authorised ŠKODA dealers across India, transferrable at the time of resale

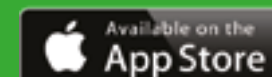
Dealer:

ŠKODA  
Financial Services



Download the  
MyŠKODA App  
for a hassle-free  
ownership  
experience.

♥ YŠKODA



[www.skoda-auto.co.in](http://www.skoda-auto.co.in) | ☎ Toll-free 1800 2700 260

Issue Date: June 2021

Specifications given differ from model to model. Accessories shown may not be part of standard equipment. Always insist on genuine ŠKODA Auto parts and accessories available at authorised sales and service centres. Information relating to colours, prices, construction, technical details and equipment was valid at the time of issuance and these are subject to changes without any prior notice. All disputes are subject to the Courts in Aurangabad Jurisdiction only. Terms and conditions apply.