

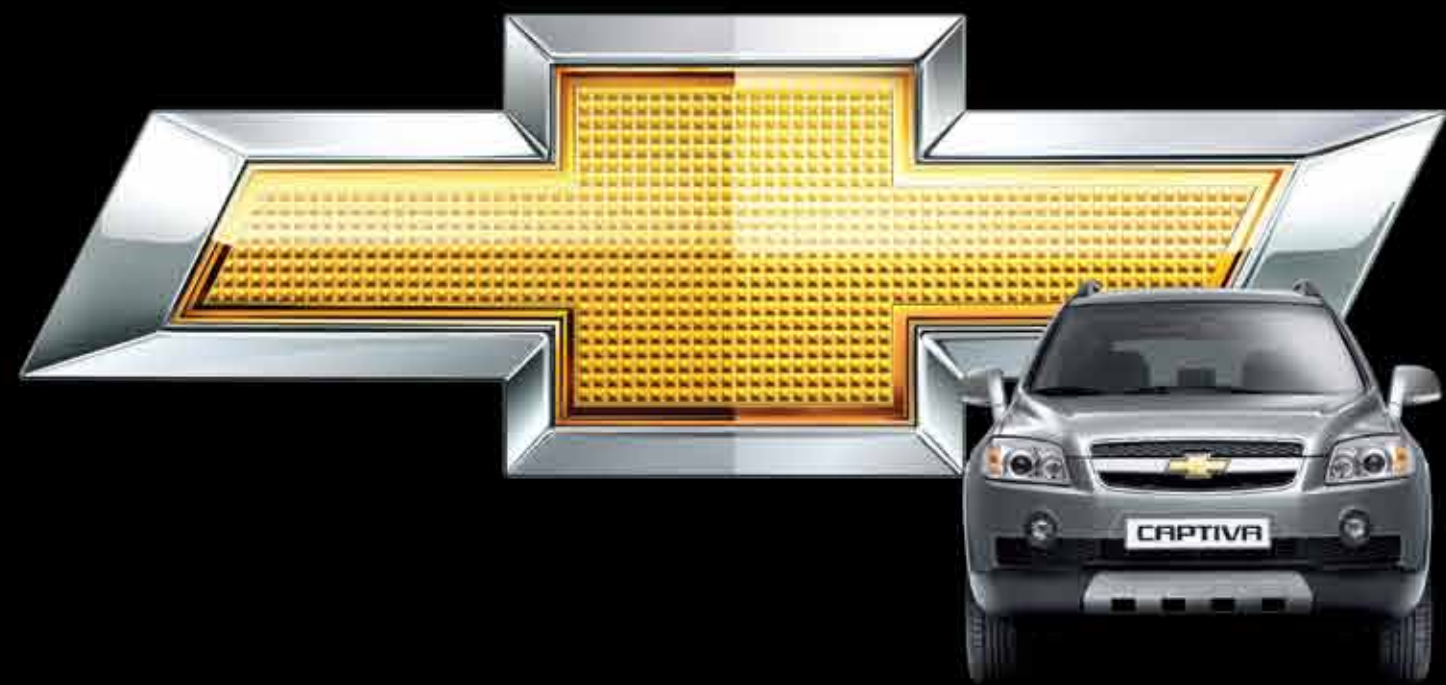
Downloaded From

 **Drive Inside**  
car shopping made easy [.com](http://driveinside.com)



CAR BROCHURE

Chevrolet Captiva





[www.chevrolet.co.in](http://www.chevrolet.co.in)



**CHEVROLET**

## THE CAPTIVA – MORE IN EVERY WAY

One ride in the Captiva and you will agree that this SUV has it all. And more. Be it convenience, technology, power, styling, comfort or safety the Captiva is big on each. Indeed, the Captiva offers much more than any other in its class.



### MORE POWER

The Captiva is truly a mighty machine with immense power within. Just get behind the wheel and you can feel the power of the mighty engine waiting for your command.

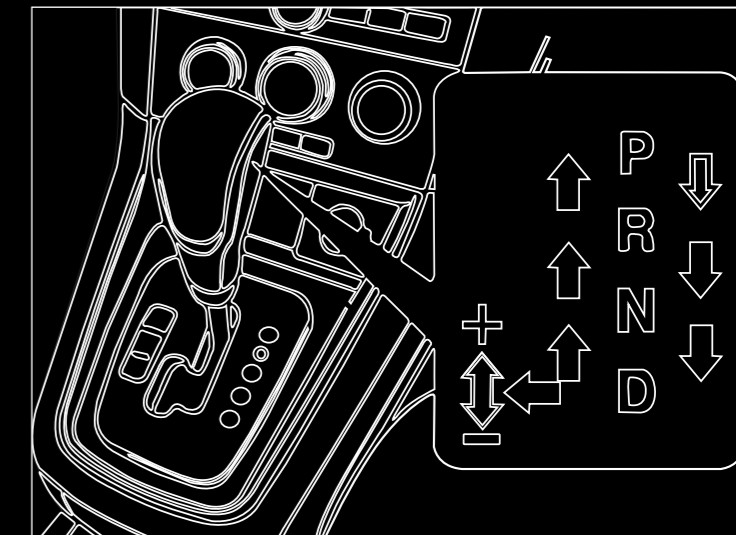
## The New Generation Variable Geometry Turbo Commonrail Direct Injection (VCDi) Diesel Engine

On the road or off it, the Chevrolet Captiva is never short of might. The new generation VCDi diesel engine delivers a heart racing 150PS of power and 320Nm of torque. So get out and explore with the VCDi powered Chevrolet Captiva.

### MORE CONVENIENCE\*

The Captiva is one ride where even the driver gets to sit back and enjoy. The powerful Captiva comes with an intelligent transmission system that changes gears automatically on the road, by selecting gear patterns according to your inputs and conditions.

What's more, in winter, to provide better grip in snowy and slippery conditions you can switch to winter mode to maintain a stable and smooth drive. So get out there and don't just drive. Enjoy!



### MORE CUTTING-EDGE TECHNOLOGY

With its revolutionary Automatic Level Ride Control, Descent Control System, Electronic Stability Program and Adaptive AWD, the Captiva is loaded with cutting-edge technology.

#### Descent Control System\*

The Captiva is equipped to regulate downhill speed and allow a controlled descent without needing to touch the brake pedal.

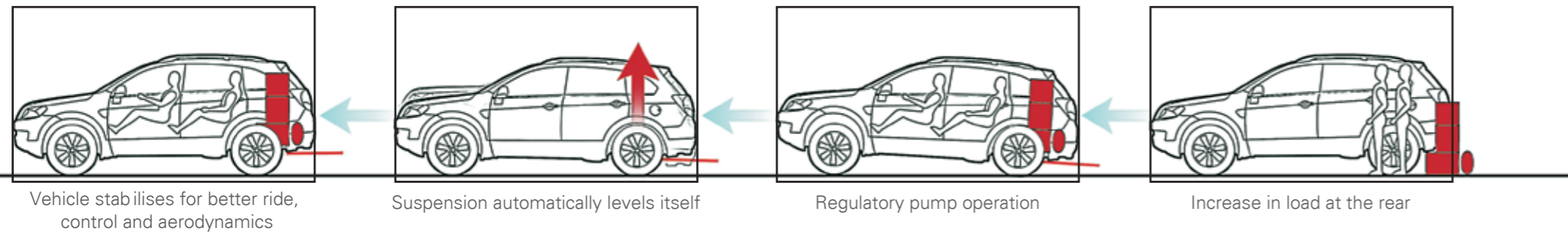
\* Available with LTZ.





## Revolutionary Automatic Level Ride Control

The Captiva can take on anything on the road or within the cabin with the revolutionary Self Leveling Suspension Technology. Engineered to keep the suspension stable no matter what the load, you can expect the same high levels of comfort and performance every time, whatever be the road conditions.

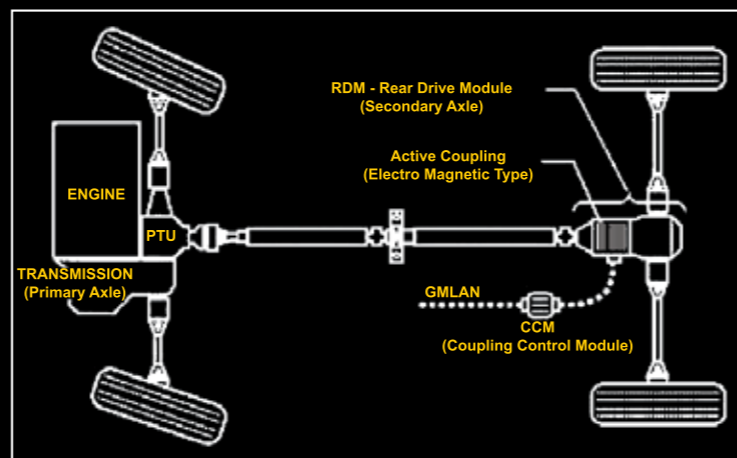


## Electronic Stability Program (ESP)\*

The Captiva intervenes in situations where stability may be lost and prevents roll over or skidding while driving so that you are always safe.

## Adaptive All Wheel Drive (AWD)\*

Captiva's adaptive AWD has a Torque Sensing Electrically Controlled Coupling that allows engine torque to be automatically re-directed to individual axles as driving conditions warrant making the drivability and handling of Captiva's AWD better than normal (on demand) AWD.



## MORE STYLE

The Captiva is designed to turn heads wherever you go. Rugged and attractive, the Captiva is styling at its best. The prominent bowtie on the front grille, body contoured engine hood with dynamic crease line, projection headlamps, air dam on the side fenders and flared wheel arches, coupled with the 17" alloy wheels make it a car that redefines style.



17" alloy wheels with aggressive wheel arches



Integrated air dam on side fender



Indicator lights incorporated in exterior mirrors



\* Available with LTZ.



**MORE COMFORT**

Open the door of a Captiva and you will enter a world of comfort.





## Refined and Comfortable Interior

The road will be your best friend with the supremely crafted interiors of the Captiva. Sink into the all beige seats and get every bit of information from the driver friendly LCD screen.

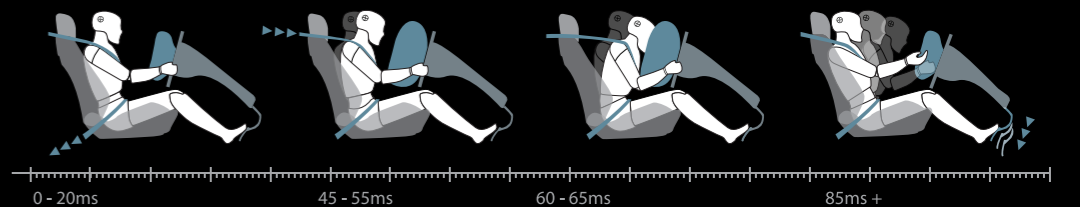
## Innovative 5+2 Flexi Seating Configuration

The more the merrier. The new Captiva is incredibly spacious with a 5+2 seating configuration, which means there's always space for one more. Enjoy all the space you'll ever need and ever craved.



## MORE SAFETY

The Captiva offers you complete safety on the road or off it. Loaded with safety features like Dual Front Bags, ABS with EBD, a rigid monocoque shell and ventilated disc brakes the Captiva keeps you safe on every ride!







The **Chevrolet Captiva Xtreme**. Taking power, styling and luxury to an all-new level. So get out there and push this beast to the extreme on a turf of your choice, be it the busy city road or the unbeaten wilderness.



New Red and Black Seat Assembly



New Dashboard & Instrument Cluster

## EXTREME STYLING

This raving machine is as extreme in luxury as it's in power. Check out the stylish new Dashboard and Instrument Cluster that lets you control everything with a touch of a finger and sink into the new Red and Black Seat Assembly. Just one turn of the ignition and you will be proclaiming yourself the new ruler of the road.

## EXTREME ADVENTURE



Feel the extreme. Breathe in the wild or let in the sun with the all-new integrated Sunroof. Come, soak in the adventure or just lean back and gaze at the stars!



New Bumper Grille



Black Bezel Headlamps



Exciting New Rear Lamps

## EXTREME DESIGN

It's extreme and so are its looks. Be it on the move or stationary, one look is all it will take. With a brand new front Bumper Grille, Black Bezel Headlamps and exciting new Rear Lamps, this beast oozes attitude.









# TECH SPECS

CAPTIVA	LT/XTREME	LTZ
Engine Type	Four Cylinder VCDi Diesel Engine	
Fuel	Diesel	
No. of Valve/OHC	16V/SOHC	
Max. Output (PS)/rpm	150 PS @ 4000 rpm	
Max. Torque (NM)/rpm	320 Nm @ 2000 rpm	
Displacement	1991	
Compression Ratio	17.5 : 1	
Fuel System	Common Rail Direct Injection	
Transmission	5 Speed Manual	5 Speed Automatic
Tyre Size	235/60 R17 (Standard) 215/70 R16 (Spare)	
Wheels	7J X 17 (Alloy) (Standard) 6.5 J X 16 (Steel) (Spare)	
Length (mm)	4660	
Width (mm)	1870	
Height (mm)	1755	
Wheelbase (mm)	2705	
Front Track (mm)	1562	
Rear Track (mm)	1572	
Front Overhang (mm)	925	
Rear Overhang (mm)	1030	
Front Suspension	McPherson Strut with Twin Tube Gas Pressure Strut	
Rear Suspension	Multi Link, Level Ride with Twin Tube Gas Pressure Strut	
Front Brakes	Disc	
Rear Brakes	Disc	
Steering Type	Hydraulic Power Assist Description: Rack & Pinion System & Hydraulic Driven Pump	
Kerb Weight (Kg)	1820	1910
Ground Clearance (mm)	197	
Turning Circle Radius (m)	5.8	
<b>COMFORT AND CONVENIENCE</b>		
Automatic Climate Control	✓	✓
Power Steering	✓	✓
Power Windows with 1 Touch Down Driver Side	✓	✓
8 Way Power Adjustable Driver Seat	✓	✓
Power Adjustable Outside Mirrors with Turn Indicators	✓	✓
Sunshades with Vanity Mirror, Cover and Ticket Holder	✓	✓
Integrated 2 DIN Radio CD MP3 Audio System with 6 Speakers	✓	✓

CAPTIVA	LT/XTREME	LTZ
Remote Keyless Entry	✓	✓
Two Remote Keys	✓	✓
Infotainment Controls on Steering Wheel	✓	✓
Tilt Adjustable Steering	✓	✓
Sliding Driverside Armrest with Dual Storage	✓	✓
Card Holder	✓	✓
Front Door Puddle Lamps	✓	✓
Portable Ashtray	✓	✓
Automatic Level Ride Suspension	✓	✓
Adaptive All Wheel Drive	*	✓
Dimmable Instrument Cluster and Displays	✓	✓
Height Adjustable Front Seatbelts	✓	✓
Remote Operated Flip-up Type Tailgate Glass	✓	✓
Heated Outside Mirrors	✓	✓
<b>SEATING</b>		
5+2 Flexi Seating	✓	✓
Tilt Adjustable Front Seat Headrest	✓	✓
Split Double Folding 2nd Row Seats with Recline Function	✓	✓
Split Collapsible 3rd Row Seats with Automatic Fold Down Headrests	✓	✓
Rear Armrest with Storage Box	✓	✓
<b>SAFETY AND SECURITY</b>		
Antilock Braking System with Electronic Breakforce Distribution	✓	✓
Front and Rear Fog Lamps	✓	✓
Driver Seatbelt Warning	✓	✓
Front Seatbelt Pre-Tensioner and Load Limiter	✓	✓
Dual Front Airbags	✓	✓
Descent Control System	*	✓
Traction Control System	*	✓
Electronic Stability Program	*	✓
<b>INTERIORS &amp; EXTERIORS</b>		
Twin Rear Tailpipe with Chrome Tip	✓	✓
Leather Upholstery	✓	✓
Leather Wrapped Gearknob and Steering Wheel	✓	✓
Silver Painted Speaker Grill	✓	✓
Stainless Steel Door Sill Plates	✓	✓
Chrome Grip Type Door Handles	✓	✓
Aluminium Insert in Rear Bumper Loading Area	✓	✓
Silver Painted Skid Plates	✓	✓
Satin Silver Roof Rails	✓	✓





## CHOOSE OUR EVER GROWING NETWORK TO SERVE YOU BETTER



● EXISTING DEALERSHIPS ● NEW DEALERSHIPS IN EXISTING CITIES ● UPCOMING DEALERSHIPS IN NEW CITIES



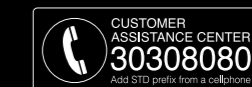
For more details, please contact your nearest Chevrolet dealer.

Warranty : 2 years / 50,000 kms (whichever is earlier)<sup>†</sup>



FUEL EFFICIENCY  
(MANUAL TRANSMISSION)  
**12.6 kmpl\***

FUEL EFFICIENCY  
(AUTOMATIC TRANSMISSION)  
**10.6 kmpl\***



SMS Captiva to 53030 for a test drive. E-mail [gmi.cac@gm.com](mailto:gmi.cac@gm.com). For detailed terms & conditions, contact us at our 24 hour helpline 30308080 (prefix local STD code when dialling from a mobile phone) or visit our website at [www.chevrolet.co.in](http://www.chevrolet.co.in)

**Genuine Accessories\*\***  
Insist on Chevrolet Genuine Accessories from our authorised dealers. One year/20,000 kms warranty on accessories.

**Chevrolet Sales India Pvt Ltd.**  
Regd. office & works: Block B, Chandrapura Industrial Estate, Halol-389 351, Dist. Panchmahals, Gujrat. Tel.: +91-2676 221000. Fax: +91-2676 220666.

\*For detailed terms and conditions, visit [www.chevrolet.co.in](http://www.chevrolet.co.in). \*\*Accessories shown may not be part of standard equipment. Colours and specifications are subject to change without prior notice. Colours shown may not match the actual colours due to printing limitations. Features mentioned and accessories shown will vary by model and may not be part of standard equipment. Chevrolet is a registered trademark of General Motors Corporation. Chevrolet Captiva has been manufactured using parts and technology from GMDAT. Some features shown are optional and may be available only on select models. The Chevrolet Captiva is available under different names in different regions of the world. †As per ARAI test result. \*As of July 2010.