



**TOYOTA**

2022 Mirai

2022 MIRAI

# Innovation is power.

The 2022 Toyota Mirai's sleek design is as innovative as its engineering. Driving in the city or merging onto the freeway, its aerodynamic stance and premium rear-wheel-drive platform consistently deliver an exciting ride. And inside, Mirai's spacious cabin seats five comfortably. Best of all, Mirai just needs around five minutes at the hydrogen pump to refuel<sup>1</sup> and you're ready to hit the road.



XLE shown in Heavy Metal<sup>2</sup> and Limited shown in Hydro Blue<sup>2</sup> with available 20-in. Super Chrome-finished aluminum alloy wheels. Below left: Limited interior shown in White SofTex<sup>®3</sup> trim. Below right: XLE shown in Heavy Metal.<sup>2</sup>



See numbered footnotes in Disclosures section.



Limited interior shown in White SoftTex<sup>®3</sup> trim.

## OWNER BENEFITS

# More reasons to go hydrogen.

Mirai comes equipped with a comprehensive Owner Experience Program offering world-class services. When it comes to going hydrogen, the pros outweigh the cons.

### Extended ToyotaCare coverage

More ToyotaCare, more peace of mind. Enjoy our no cost normal factory scheduled maintenance plan for three years, or 35,000 miles, whichever comes first, and no cost enhanced Roadside Assistance for three years, regardless of mileage.<sup>4</sup>

### FCEV Warranty

Every new Mirai has an 8-year/100,000-mile Fuel Cell Electric Vehicle (FCEV) warranty on key Fuel Cell Electric Vehicle components<sup>5</sup> and a 10-year/150,000-mile hybrid battery warranty.<sup>6</sup>

### HOV carpool sticker

Enjoy life in the fast lane. Mirai is eligible for an HOV Carpool Sticker.<sup>7</sup>

### Flexible rental

For the first three years of ownership, Mirai's complimentary 21-day Rental Experience gives you flexibility when you need it most.<sup>8</sup>

### Complimentary fuel

Mirai comes with up to \$15,000 or 6 years' worth of complimentary fuel for purchases and up to \$15,000 or 3 years' worth of complimentary fuel for leases.<sup>9</sup>

### 24/7 call support

Around-the-clock help when you need it most. Every Mirai comes with 24/7 Customer Call Support for the duration of ownership.

See numbered footnotes in Disclosures section.

TECHNOLOGY

# Incredibly interactive.

Mirai's advanced tech helps you feel more connected and in control on every drive.



### Available Toyota Teammate™

Say hello to your new partner for the road. Toyota Teammate™<sup>66</sup> is a new suite of driver-assistance technologies featuring Advanced Drive<sup>67</sup> and Advanced Park.<sup>49</sup> Standard on Mirai Limited, Advanced Park makes parking as simple as pressing a button. Available on Mirai Limited, Advanced Drive is designed to partner with the driver to promote safe and convenient driving on mapped, limited-access highways. Advanced Drive-equipped vehicles include a 10-year subscription of connectivity to support functionality, after which a subscription is required, if available. 4G network dependent.



### Available Color Head-Up Display

With your hands on the steering wheel and your eyes on the road, Mirai's color Head-Up Display (HUD) casts your speed, turn-by-turn directions, and Hybrid System Indicator info right into your line of sight.



### Available Bird's Eye View Camera

Mirai's Bird's Eye View Camera with Perimeter Scan<sup>13</sup> helps you check your surroundings for hazards. It uses four cameras, one on each side of the vehicle, to display a bird's-eye view onto the touchscreen display. When you're parked and using the Moving View setting, Mirai creates an animated virtual view from above to give you a bigger picture of what's around.



### 12.3-in. touchscreen display

Mirai's 12.3-in. touchscreen display is a blank canvas ready to be customized. It's easy to set up with your favorite apps and, with such a large display, dual screens can be shown simultaneously. Dynamic Navigation<sup>10</sup> also comes standard for the first three years,<sup>11</sup> so you can follow directions while your copilot puts on a playlist. You can even make calls hands-free using Bluetooth<sup>®12</sup> wireless connectivity.

See numbered footnotes in Disclosures section.

EXTERIOR

# The purest expression of elegance.

Mirai's low, wide and long stance is the perfect mix of sport and luxury. And its aerodynamic design cuts through the air with ease, helping reduce drag at high speeds for enhanced efficiency.



Limited shown in Hydro Blue<sup>2</sup> with available 20-in. Super Chrome-finished aluminum alloy wheels. Below left: XLE shown in Oxygen White.<sup>2</sup> Below right: Limited shown in Hydro Blue<sup>2</sup> with available 20-in. Super Chrome-finished aluminum alloy wheels.

## LED taillights

Mirai's taillight design is nothing short of iconic. Made up of energy-efficient and durable LED bulbs, these taillights shine bright for enhanced road safety at night.

## Wheel design

Standard on XLE, 19-in. twin-spoke aluminum alloy wheels elegantly accent Mirai's modern look. And on Limited, you can choose from standard 19-in. black machine-finished aluminum alloy wheels or available 20-in. Super Chrome-finished aluminum alloy wheels.



# Advanced to its core.

Mirai generates power by combining hydrogen with oxygen from the outside air. On the road, hydrogen from the fuel tank and air entering from the intake grille meet in the Fuel Cell Stack. There, a chemical reaction involving hydrogen and the oxygen in the air creates electricity—powering Mirai. In the end, the only by-product is water.

## Class-leading 402-mile range

With an EPA-estimated range of 402 miles<sup>14</sup> for XLE, Mirai just needs around five minutes to fill up,<sup>1</sup> and you're ready to go.

## Rear-Wheel Drive and drive modes

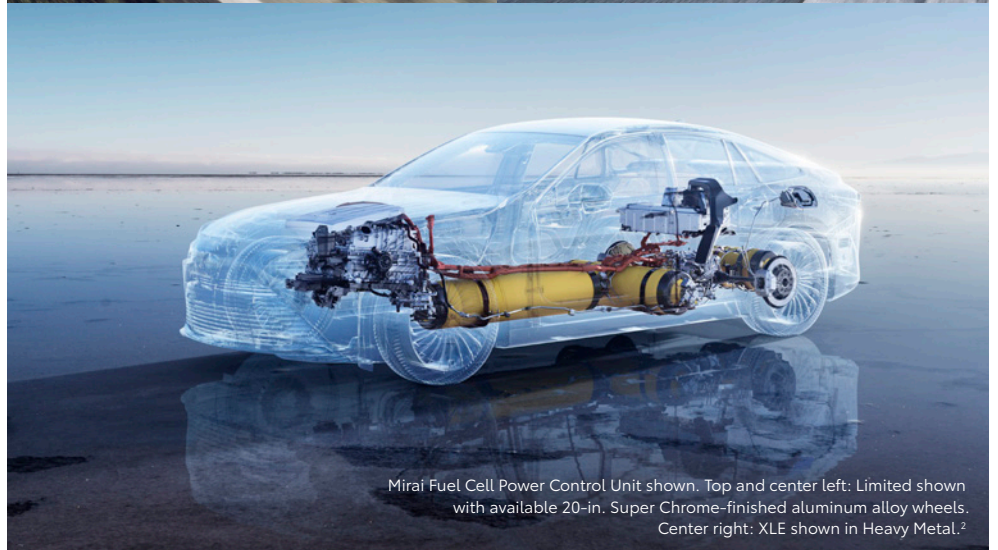
Enhancing both cornering and acceleration, Mirai's premium rear-wheel-drive platform is engineered to make you want to take the long way home. And with three driving modes: Eco, Normal and Sport, Mirai lets you alter driving dynamics at the push of a button.

## Three hydrogen tanks

Mirai features three hydrogen tanks for extended range. These high-pressure carbon-fiber-reinforced-polymer tanks have been rigorously tested and proven to meet Global Technical Regulation No. 13.<sup>15</sup>

## How do I fill up Mirai?

Refueling Mirai is simple. There's a pump and a nozzle, just like at a gasoline station. As you pump in the hydrogen, it travels to carbon-fiber-reinforced fuel tanks where it's stored. After around five minutes,<sup>1</sup> you'll be ready to hit the road.



Mirai Fuel Cell Power Control Unit shown. Top and center left: Limited shown with available 20-in. Super Chrome-finished aluminum alloy wheels. Center right: XLE shown in Heavy Metal.<sup>2</sup>

INTERIOR

# Purposefully designed.

Mirai's craftsmanship is on display with every detail.



## Interior design

Available satin-silver or copper-colored accents make Mirai's interior as refined as its engineering. And premium touches like available perforated, embossed SofTex<sup>®</sup>-trimmed<sup>3</sup> seating show this interior was put together with purpose — right down to the last stitch.



## Available three-zone automatic climate control

Little innovations can make a big difference. With Mirai's three-zone automatic climate control, driver and passengers can set their temperature in one of three zones: driver's side, passenger side and rear.



## Available heated and ventilated seats

Mirai's heated and ventilated front and rear seats help keep everyone comfortable — no matter the season.



## Available Dual Panoramic View Moonroof

Above the front and rear seats, Mirai's dual fixed Panoramic View Moonroof lets natural light shine in for an added level of openness. With the sunlight shining in, you're ready for whatever's next.

See numbered footnotes in Disclosures section.

# Amplify your drive.

Take advantage of smarter and convenient technologies designed to simplify your everyday life. From a suite of services that are there for you 24/7 to an immersive audio multimedia system, you can stay connected to your world.



## Connected Services

Our available suite of Connected Services provides added convenience and peace of mind.<sup>16</sup>

- ✓ **Safety Connect<sup>®</sup>**  
Emergency SOS assistance and 24/7 Toyota Roadside Assistance.<sup>17, 18</sup>
- ✓ **Service Connect**  
Get personalized maintenance updates and vehicle health reports.<sup>19</sup>
- ✓ **Remote Connect**  
Start climate control and more, using your compatible smartphone.<sup>20</sup>
- ✓ **Wi-Fi Connect**  
Turn your Toyota into a hotspot with 4G connectivity.<sup>21</sup>
- ✓ **Destination Assist**  
24/7 live agent assistance to locate your next destination.<sup>22</sup>

To view included trial details, please visit [toyota.com/connected-services](http://toyota.com/connected-services).

## Audio Multimedia

Make every drive more personal. By utilizing your vehicle's touchscreen display and audio multimedia capabilities, you'll always have access to what you want. Whether it's listening to your favorite playlist or finding the most scenic route to your destination, you'll enjoy the latest in connectivity and technologies that are all about you.



## Apple CarPlay<sup>®</sup>

Bring along a familiar face. With Apple CarPlay<sup>®23</sup> compatibility, you can use your compatible iPhone<sup>®24</sup> with the audio multimedia system to get directions, make calls, send and receive messages, and listen to music — all while staying focused on your commute.



## Android Auto<sup>™</sup>

Stay connected on the road. By pairing your compatible Android<sup>™25</sup> phone with the audio multimedia system, Android Auto<sup>™26</sup> lets you access your Google Assistant<sup>™</sup>, get real-time traffic alerts, make and receive phone calls, listen to your favorite soundtrack and more.



## SiriusXM<sup>®</sup> with 3-month Platinum Plan trial subscription

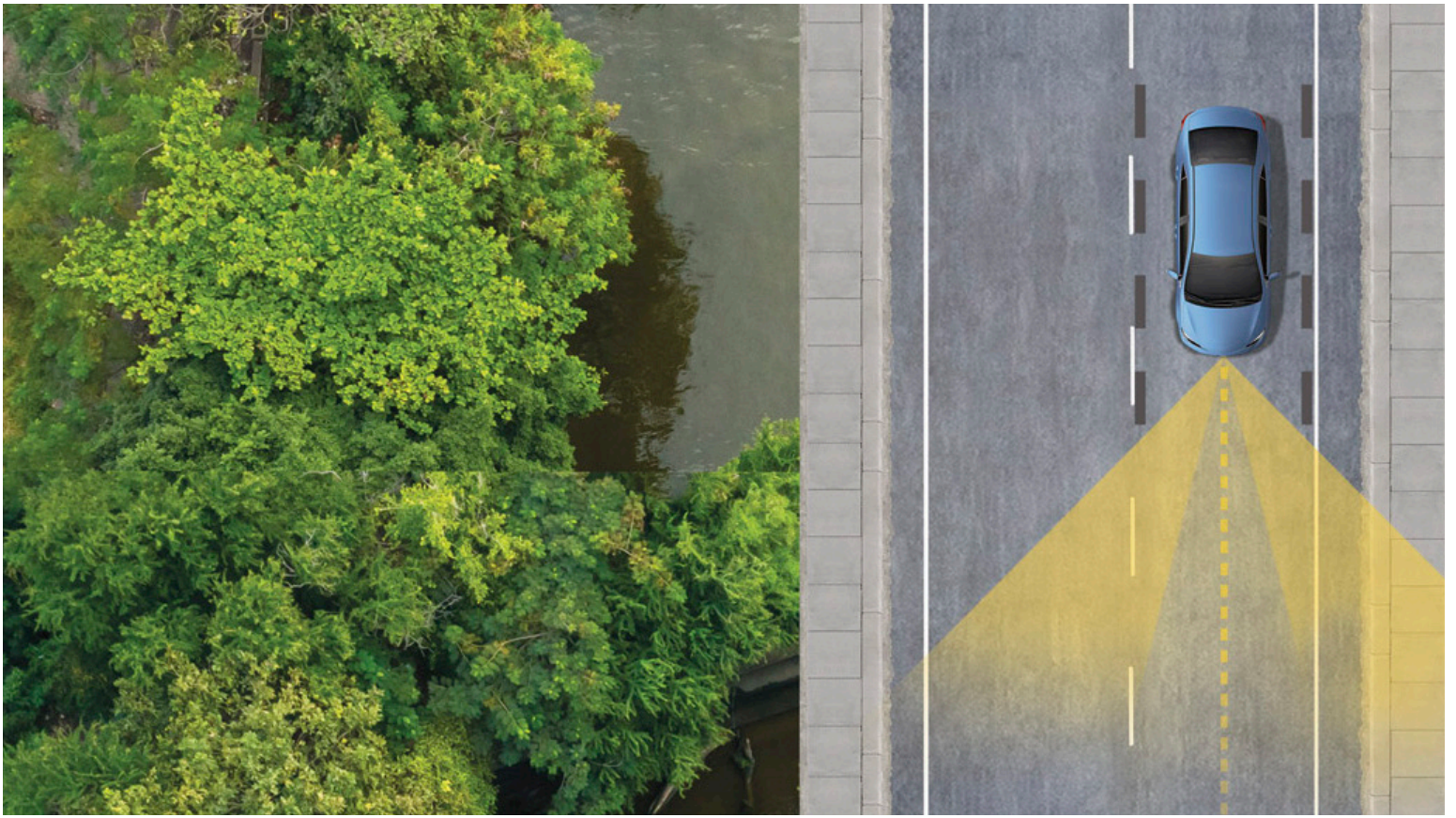
SiriusXM<sup>®27</sup> has premium entertainment that you won't hear anywhere else. With the Platinum Plan, you get 350+ channels, including 165+ channels in your vehicle, to enjoy ad-free music, plus sports, news, talk, comedy and more.<sup>28</sup>



## JBL<sup>®</sup>

Feel the difference and hear the truth. Designed specifically for Toyota, JBL<sup>®30</sup> finely tunes each speaker to the interior of the vehicle. Just turn up the volume to hear the crisp, rich, vibrant sound come through.





*TOYOTA SAFETY SENSE™ 2.5+ (TSS 2.5+)*

# Peace of mind comes standard.

Toyota Safety Sense™ 2.5+ (TSS 2.5+)³¹ is the latest bundle of active safety features included on many new Toyota vehicles at no additional cost. These innovative features were designed to help protect you and your passengers from harm.



Pre-Collision System with Pedestrian Detection³²



Full-Speed Range Dynamic Radar Cruise Control³³



Lane Departure Alert with Steering Assist³⁴



Automatic High Beams³⁵



Lane Tracing Assist³⁶



Road Sign Assist³⁷

## MIRAI MODELS



### XLE

Includes these key features

#### Mechanical/Performance

- ✓ Toyota Fuel Cell System (TFCS)
- ✓ Permanent magnet AC synchronous electric motor, 182 hp, 300 lb.-ft.
- ✓ Rear-Wheel Drive (RWD)
- ✓ ECO, Normal and Sport driving modes
- ✓ Front and rear multi-link suspension
- ✓ Front and rear ventilated disc brakes
- ✓ 76 city/71 highway/74 combined est. mpg<sup>38</sup>

#### Exterior Features

- ✓ Bi-beam auto-leveling LED headlights
- ✓ Multi-LED front and rear turn signal indicators, Daytime Running Lights (DRL), clearance lights and side marker lights etched with Mirai logo
- ✓ LED taillights and rear combination lights
- ✓ Satin-black front grille
- ✓ 19-in. twin-spoke aluminum alloy wheels with P235/55R19, 8J all-season tires
- ✓ Color-keyed heated power-folding outside mirrors with turn signal indicators, blind spot warning<sup>36</sup> and puddle lights
- ✓ Color-keyed roof-mounted shark-fin antenna

#### Interior Features

- ✓ Seating for up to five
- ✓ Heated SofTex<sup>®</sup>-trimmed<sup>3</sup> front seats include:
  - 8-way power driver's seat and 4-way power front passenger seat
- ✓ Leather tilt/telescopic steering wheel, Bluetooth<sup>®12</sup> hands-free phone and voice-command controls
- ✓ Dual zone automatic climate control
- ✓ One USB media port, three USB charge ports<sup>39</sup>
- ✓ 8-in. color Multi-Information Display (MID)
- ✓ Smart Key System with remote keyless entry
- ✓ Auto-dimming rearview mirror and HomeLink<sup>®41</sup> universal transceiver

#### Audio Multimedia

- ✓ Premium Audio includes:
  - 12.3-in. touchscreen and 14 JBL<sup>®30</sup> speakers
  - Android Auto<sup>™26</sup> & Apple CarPlay<sup>®23</sup> compatible
  - SiriusXM<sup>®27</sup> with 3-month Platinum Plan trial subscription<sup>28</sup>
- ✓ Connected Services<sup>16</sup> with Safety Connect<sup>®</sup> trial<sup>17</sup>

#### Safety/Convenience

- ✓ Toyota Safety Sense<sup>™</sup> 2.5+ (TSS 2.5+)<sup>31</sup>
- ✓ Blind Spot Monitor (BSM)<sup>42</sup> with Rear Cross-Traffic Alert (RCTA)<sup>43</sup>
- ✓ Star Safety System<sup>™</sup>
- ✓ Electric Parking Brake (EPB)<sup>44</sup> with Brake Hold<sup>45</sup>
- ✓ Hill Start Assist Control (HAC)<sup>46</sup>
- ✓ Active Cornering Assist (ACA)
- ✓ Backup camera<sup>47</sup>

#### Options/Packages

- ✓ Advanced Technology Package includes:
  - Bird's Eye View Camera<sup>13</sup>
  - Front and Rear Parking Assist with Automatic Braking (PA w/AB)<sup>48</sup>
  - Front-seat footwell illumination



### Limited

Adds to or replaces features offered on XLE

#### Mechanical/Performance

- ✓ Toyota Fuel Cell System (TFCS)
- ✓ Permanent magnet AC synchronous electric motor, 182 hp, 300 lb.-ft.
- ✓ Rear-Wheel Drive (RWD)
- ✓ ECO, Normal and Sport driving modes
- ✓ Front and rear multi-link suspension
- ✓ Front and rear ventilated disc brakes
- ✓ 67 city/64 highway/65 combined est. mpg<sup>38</sup>

#### Exterior Features

- ✓ Dual fixed Panoramic View Moonroof with power sliding shade
- ✓ 19-in. black machine-finished aluminum alloy wheels with P235/55R19, 8J all-season tires
- ✓ Rain-sensing variable windshield wipers
- ✓ Black roof-mounted shark-fin antenna

#### Interior Features

- ✓ Heated and ventilated perforated SofTex<sup>®</sup>-trimmed<sup>3</sup> front and rear seats includes:
  - 8-way power driver's seat and front passenger seat with memory function
- ✓ Leather tilt/telescopic steering wheel with memory, audio, Bluetooth<sup>®12</sup> hands-free phone and voice-command controls
- ✓ Multi-color ambient lighting
- ✓ Three-zone automatic climate control
- ✓ Rear-window sunshades
- ✓ Active Sound Control (ASC)

#### Audio Multimedia

- ✓ Premium Audio includes:
  - 12.3-in. touchscreen and 14 JBL<sup>®30</sup> speakers
  - Android Auto<sup>™26</sup> & Apple CarPlay<sup>®23</sup> compatible
  - SiriusXM<sup>®27</sup> with 3-month Platinum Plan trial subscription<sup>28</sup>
- ✓ Connected Services<sup>16</sup> with Safety Connect<sup>®</sup> trial<sup>17</sup>
- ✓ Color Head-Up Display (HUD)

#### Safety/Convenience

- ✓ Toyota Safety Sense<sup>™</sup> 2.5+ (TSS 2.5+)<sup>31</sup>
- ✓ Blind Spot Monitor (BSM)<sup>42</sup> with Rear Cross-Traffic Alert (RCTA)<sup>43</sup>
- ✓ Hill Start Assist Control (HAC)<sup>46</sup>
- ✓ Active Cornering Assist (ACA)
- ✓ Advanced Park<sup>49</sup>
- ✓ Bird's Eye View Camera with Perimeter Scan<sup>13</sup>
- ✓ Front and Rear Parking Assist with Automatic Braking (PA w/AB)<sup>48</sup>

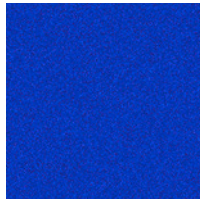
#### Options/Packages

- ✓ 20-in. Super Chrome-finished aluminum alloy wheels
- ✓ Toyota Teammate<sup>™</sup> Package<sup>66</sup> includes:
  - Advanced Drive<sup>67</sup> with 10-year subscription (including extension of Safety Connect,<sup>17</sup> Dynamic Navigation,<sup>10</sup> and Destination Assist trials)<sup>22</sup>
  - 12.3-in. color TFT LCD gauge cluster
  - 120V/100W power outlet<sup>68</sup>
  - Dual-bulb LED headlights
  - (New Advanced Drive System Service subscription required after expiration of 10-year period, if available.) 4G network dependent.

MIRAI COLORS & TRIMS



Black



Hydro Blue<sup>2</sup>



Supersonic Red<sup>2</sup>

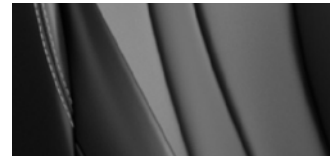


Heavy Metal<sup>2</sup>



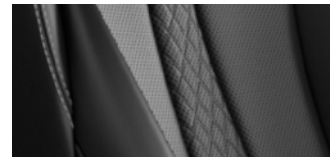
Oxygen White<sup>2</sup>

XLE



Black SofTex<sup>®3</sup> trim with silver accents

LIMITED



Black perforated SofTex<sup>®3</sup> trim with silver accents



Black perforated SofTex<sup>®3</sup> trim with copper accents



White perforated SofTex<sup>®3</sup> trim with silver accents



White perforated SofTex<sup>®3</sup> trim with copper accents

MIRAI WHEELS



19-in. twin-spoke aluminum alloy wheels



19-in. black machine-finished aluminum alloy wheels



Optional 20-in. Super Chrome-finished aluminum alloy wheels

## MIRAI ACCESSORIES

This is a great way to add extra personality to your Mirai. Not every accessory is available in your area, so for a complete list of accessories, go to [toyota.com/Mirai/accessories](http://toyota.com/Mirai/accessories).



Alloy wheel locks—chrome-finished



Cargo tote<sup>50</sup>



Carpet trunk mat



Emergency assistance kit



First aid kit with PPE



Rear bumper appliqué



Alloy wheel locks—black chrome-finished



All-weather floor liners<sup>40</sup>

## WARRANTIES

Every Toyota Car, Truck and SUV is built to exceptional standards. And that's not idle boasting. We back it up with these Limited Warranty Coverages:

**Basic:** 36 months/36,000 miles (all components other than normal wear and maintenance items).

**Fuel-Cell-System-Related Component Coverage:** Fuel Cell System components, including the Battery ECU, FC Air Compressor, FC Boost Converter, FC ECU, H2 tanks, FC PCU (Power Control Unit), FC System, HF ECU (H2 Fueling ECU), and Power Management ECU (HV ECU).

**Powertrain:** 60 months/60,000 miles (engine, transmission/transaxle, drive system, seatbelts and airbags).

**Rust-Through:** 60 months/unlimited miles (corrosion perforation of sheet metal).

**Emissions:** Coverages vary under Federal and California regulations. Refer to applicable *Warranty and Maintenance Guide* for details.

Warranty coverage is subject to terms and conditions. Refer to applicable *Warranty and Maintenance Guide* for details.

**Accessories:** For Genuine Toyota Accessories purchased at the time of the new vehicle purchase, the Toyota Accessory Warranty coverage is in effect for 36 months/36,000 miles from the vehicle's in-service date, which is the same coverage as the Toyota New Vehicle Limited Warranty.

For Genuine Toyota Accessories purchased after the new vehicle purchase the coverage is 12 months, regardless of mileage, from the date the accessory was installed on the vehicle, or the remainder of any applicable new vehicle warranty, whichever provides greater coverage.

You may be eligible for transportation assistance if it's necessary that your vehicle be kept overnight for repairs covered under warranty. Please see your authorized Toyota dealership for further details.

For complete details about Toyota's warranties, please visit [www.toyota.com](http://www.toyota.com), refer to the applicable *Warranty and Maintenance Guide* or see your Toyota dealer.

Exterior

	XLE	LIMITED
Bi-beam auto-leveling LED headlights	S	S
Dual-bulb LED headlights		P
Multi-LED front and rear turn signal indicators, clearance lights, and side marker lights etched with Mirai logo	S	S
Daytime Running Lights (DRL)	S	S
LED taillights and rear combination lights	S	S
Satin-black front grille	S	S
Color-keyed heated power-folding outside mirrors with turn signal indicators, blind spot warning <sup>42</sup> and puddle lights	S	
Dual-tone heated power-folding outside mirrors with turn signal indicators, blind spot warning <sup>42</sup> and puddle lights		S
Dual fixed Panoramic View Moonroof with power sliding shade		S
19-in. twin-spoke aluminum alloy wheels with P235/55R19, 8J all-season tires	S	
19-in. black machine-finished aluminum alloy wheels with P235/55R19, 8J all-season tires		S
20-in. Super Chrome-finished aluminum alloy wheels with P245/45ZR20 all-season tires		P
Rain-sensing variable windshield wipers		S
Windshield wiper de-icer	S	S
Color-keyed roof-mounted shark-fin antenna	S	
Black roof-mounted shark-fin antenna		S

Interior

Five-passenger seating with fixed rear seats	S	S
8-in. color TFT LCD gauge cluster including drive mode, speedometer, fuel efficiency and MID	S	S
12.3-in. color TFT LCD gauge cluster including drive mode, speedometer, fuel efficiency, MID, and Advanced Drive <sup>67</sup> information		P
Smart Key System includes remote keyless entry system with trunk-release, panic button and remote illuminated entry	S	S
UV-protected and water-repellent side windows	S	S
Active Sound Control (ASC)		S
Heated SofTex <sup>®</sup> -trimmed <sup>3</sup> front seats	S	
Heated and ventilated perforated SofTex <sup>®</sup> -trimmed <sup>3</sup> front and rear seats		S
8-way power-adjustable driver's seat and 4-way power-adjustable front passenger seat	S	
8-way power-adjustable driver's seat and front passenger seat with memory function		S
Leather tilt/telescopic steering wheel, Bluetooth <sup>®12</sup> hands-free phone and voice-command controls	S	
Leather tilt/telescopic steering wheel with memory and with audio, Bluetooth <sup>®12</sup> hands-free phone and voice-command controls		S
Dual zone automatic climate control	S	
Three-zone automatic climate control with individual temperature settings for driver, front passenger and rear-seat passengers and separate rear digital control panel		S
Rear touchscreen control panel with climate control function, sunshade toggle, rear-seat heating and ventilation, and audio controls		S
ALL AUTO control (heating/ventilation seats and air conditioning work in tandem automatically)	S	S
Ambient lighting available in eight colors and blue-illuminated footwells in front and rear		S
Auto-dimming rearview mirror and HomeLink <sup>®41</sup> universal transceiver	S	
Digital rearview mirror and HomeLink <sup>®41</sup> universal transceiver		S
Power door locks with shift-linked automatic locking feature	S	S
Power windows with one-touch auto up/down on all four doors, jam protection in all positions with power rear quarter windows	S	S
Overhead console with dome lights, touch-activated maplights, sunglasses storage and SOS button	S	S
Manual rear-seat sunshades		S
Power rear-window sunshade		S
Dual extendable sun visors with illuminated vanity mirrors	S	S
Front-door map pockets	S	S
Passenger-side lockable glove compartment	S	S

Multimedia and Technology

Premium Audio, Dynamic Navigation <sup>10</sup> with 3-year trial <sup>11</sup> — 12.3-in. touchscreen, 14 JBL <sup>®30</sup> speakers including subwoofer and amplifier, hands-free phone capability and music streaming <sup>12</sup> via Bluetooth <sup>®12</sup> wireless technology, Android Auto <sup>™26</sup> & Apple CarPlay <sup>®23</sup> compatible, SiriusXM <sup>®27</sup> with 3-month Platinum Plan trial subscription, <sup>28</sup> See <a href="http://toyota.com/audio-multimedia">toyota.com/audio-multimedia</a> for details. Connected Services <sup>16</sup> — Safety Connect <sup>®</sup> with 1-year trial, <sup>17</sup> Service Connect with 10-year trial, <sup>19</sup> Remote Connect with 1-year trial, <sup>20</sup> Wi-Fi Connect with up to 2 GB within 3-month trial, <sup>21</sup> Destination Assist with 1-year trial. <sup>22</sup> See <a href="http://toyota.com/connected-services">toyota.com/connected-services</a> for details.	S	S
Qi-compatible smartphone charging <sup>54</sup> tray with charge indicator light	S	S
Color Head-Up Display (HUD) with speedometer and navigation		S
12V DC socket in center console <sup>55</sup>	S	S
120V/100W power outlet <sup>68</sup> behind center console		P
One USB media port, three USB charge ports <sup>39</sup>	S	S

MIRAI FEATURES

S = Standard O = Optional P = Available as part of a package

Safety/Convenience

	XLE	LIMITED
Toyota Safety Sense™ 2.5+ (TSS 2.5+) <sup>31</sup> — Pre-Collision System with Pedestrian Detection (PCS w/PD); <sup>32</sup> Lane Departure Alert with Steering Assist (LDA w/SA); <sup>34</sup> Lane Tracing Assist (LTA); <sup>36</sup> Automatic High Beams (AHB); <sup>35</sup> Full-Speed Range Dynamic Radar Cruise Control (DRCC); <sup>33</sup> Road Sign Assist (RSA) <sup>37</sup>	S	S
Blind Spot Monitor (BSM) <sup>42</sup> with Rear Cross-Traffic Alert (RCTA) <sup>43</sup>	S	S
<b>STAR SAFETY SYSTEM</b> ™ Star Safety System™ — includes Enhanced Vehicle Stability Control (VSC); <sup>36</sup> Traction Control (TRAC), Anti-lock Brake System (ABS), Electronic Brake-force Distribution (EBD), Brake Assist (BA) <sup>37</sup> and Smart Stop Technology® (SST) <sup>58</sup>	S	S
Eight airbags <sup>59</sup> — includes driver and passenger front airbags, driver and front passenger side airbags, driver and front passenger knee airbags, and side curtain airbags	S	S
Safety Connect <sup>87</sup> — includes Emergency Assistance, Stolen Vehicle Locator, <sup>60</sup> Roadside Assistance <sup>18</sup> and Automatic Collision Notification. Available by subscription after 1-year trial has ended. <sup>17</sup>	S	S
3-point seatbelts for all seating positions; driver-side Emergency Locking Retractor (ELR) and Automatic/ Emergency Locking Retractors (ALR/ELR) on all passenger seatbelts	S	S
Advanced Park <sup>49</sup>		S
Advanced Drive <sup>67</sup> with 10-year subscription		P
Bird's Eye View Camera with Perimeter Scan; <sup>13</sup> 360-degree Overhead View in drive and reverse, and Curb View	P	S
Front and Rear Parking Assist with Automatic Braking (PA w/AB) <sup>48</sup>	P	S
Anti-theft system with alarm and engine immobilizer <sup>61</sup>	S	S
Electric Parking Brake (EPB) <sup>44</sup> with Brake Hold Function <sup>45</sup>	S	S
LATCH (Lower Anchors and Tethers for CHildren) includes lower anchors on outboard rear seats	S	S
Adjustable shoulder anchors on front seatbelts with seatbelt pretensioners on front and rear seat positions	S	S
Hill Start Assist Control (HAC) <sup>46</sup>	S	S
Active Cornering Assist (ACA)	S	S
Electric Power Steering (EPS)	S	S
Tire Pressure Monitor System (TPMS) <sup>62</sup> with individual direct pressure readout	S	S
Tire repair kit	S	S
Backup camera <sup>47</sup>	S	S
Child-protector rear door locks and power window lockout control	S	S

 **ToyotaCare**

No cost maintenance plan <sup>4</sup>	\$0 (No Cost)	\$0 (No Cost)
24-hour Roadside Assistance <sup>4</sup>	\$0 (No Cost)	\$0 (No Cost)

Toyota drivers love to embrace new things and find new adventures. They just can't sit still. And proper vehicle maintenance is key to helping keep your Toyota safe, dependable and ready to explore. That's why we include a no cost maintenance plan with the purchase or lease of every new Mirai for 3 years or 35,000 miles, whichever comes first.<sup>4</sup> 24-hour Roadside Assistance is also included for 3 years and unlimited miles.<sup>4</sup> For all the details and exclusions, please call, visit online or stop by your local Toyota dealer today. Valid only in the continental U.S. and Alaska. Let's drive with confidence. Welcome to the ToyotaCare advantage.

**Mechanical/Performance**

	XLE	LIMITED
<b>TOYOTA FUEL CELL SYSTEM (TFCS)</b>		
Type	Polymer electrolyte fuel cell	Polymer electrolyte fuel cell
Max power output (kW)	128	128
Output density by volume (kW/L)	5.4	5.4
Output density by weight (kW/kg)	5.4	5.4
Weight (kg)	32	32
Number of cells	330	330
Separator material:	Titanium	Titanium
<b>HYDROGEN TANK</b>		
Number of tanks	3	3
Type-4	S	S
Maximum filling pressure (MPa)	87.5	87.5
Normal operational pressure (MPa)	70	70
H2 tank capacity (kg)	5.6	5.6
Refueling time: approximately five minutes <sup>1</sup>	S	S
Inner layer: polymer liner	S	S
Middle layer: carbon-fiber-reinforced polymer	S	S
Surface layer: fiberglass-reinforced polymer	S	S
<b>DRIVE BATTERY</b>		
Lithium-ion (Li-ion) battery	S	S
Power output (V)	310.8	310.8
Battery capacity (Ahr)	4.0	4.0
Battery capacity (kWh)	1.24	1.24
Battery Pack Weight (kg)	44.6	44.6
<b>MECHANICAL/PERFORMANCE</b>		
Rear-Wheel Drive (RWD)	S	S
Permanent magnet AC synchronous electric motor	S	S
Electric motor max output (hp)	182	182
Electric motor max torque (lb.-ft.)	300	300
Eco, Normal and Sport driving modes	S	S
Multi-link front and rear suspension	S	S
0-60 mph (approx. seconds)	9.2	9.2
Zero Emission Vehicle (ZEV)	S	S
Electric Power Steering (EPS)	S	S
Ventilated disc brakes (front, rear)	S	S
Steering Wheel (lock-to-lock, turns)	2.51	2.51

**Dimensions**

<b>EXTERIOR (in.)</b>		
Overall length/width	195.8 / 74.2	195.8 / 74.2
Overall height	57.9	57.9
Wheelbase	114.9	114.9
Track (front/rear)	63.3 / 63.1	63.3 / 63.1
Ground clearance	5.9	5.9
<b>INTERIOR (in.)</b>		
Head room (front/rear)	38.4/36.7	-
Head room with moonroof (front/rear)	-	38.4/37.4
Shoulder room	58.4/54.4	58.4/54.4
Leg room (front/rear)	42.2/33.1	42.2/33.1
Turning circle diameter, curb-to-curb (ft.)	38.5	38.5

MIRAI SPECIFICATIONS

S = Standard O = Optional P = Available as part of a package

Weights/Capacities

	XLE	LIMITED
Seating capacity	5	5
Curb weight (lb.)	4,255	4,335
Cargo volume (cu. ft.) <sup>50</sup>	9.6	9.6

Mileage Estimates

MPGe estimates (city/highway/combined) <sup>38</sup>	76/71/74	67/64/65
Range (miles) <sup>65</sup>	402	357

Packages/Options

Advanced Technology Package: Includes Bird's Eye View Camera, <sup>3</sup> Front and Rear Parking Assist with Automatic Braking (PA w/AB) <sup>48</sup> and front-seat foot illumination	O	
20-in. Super Chrome-finished aluminum alloy wheels		O
Toyota Teammate™ Package: <sup>66</sup> Advanced Drive <sup>67</sup> with 10-year subscription (including extension of Safety Connect <sup>8</sup> , <sup>17</sup> Dynamic Navigation, <sup>10</sup> and Destination Assist <sup>22</sup> trials <sup>69</sup> ); 2-year extension of Remote Connect <sup>20</sup> trial; 12.3-in. color TFT LCD gauge cluster; 120V/100W power outlet <sup>68</sup> and dual-bulb LED headlights. (New Advanced Drive System Service subscription required after expiration of 10-year period, if available.) 4G network dependent.		O

Warranty Information<sup>63</sup>

Basic Warranty	36 months/36,000 miles	36 months/36,000 miles
Fuel-Cell-System-Related Component Coverage <sup>5</sup>	96 months/100,000 miles	96 months/100,000 miles
Powertrain	60 months/60,000 miles	60 months/60,000 miles
Corrosion Perforation	60 months/unlimited miles	60 months/unlimited miles
Restraint Systems	60 months/60,000 miles	60 months/60,000 miles
Hybrid Systems <sup>64</sup>	96 months/100,000 miles	96 months/100,000 miles
Hybrid Battery <sup>51</sup>	120 months/150,000 miles	120 months/150,000 miles



## DISCLOSURES

1. Fueling time varies with hydrogen fueling pressure and ambient temperature. 2. Extra-cost color. 3. SofTex® is a registered trademark of Toyota Motor Sales, U.S.A., Inc. 4. ToyotaCare for Mirai covers normal factory scheduled maintenance for three years or 35,000 miles, whichever comes first. Certain models require a different maintenance schedule as described in their Maintenance Guide. 24-hour Roadside Assistance is also included for three years, unlimited mileage. Roadside Assistance does not include parts and fluids. Valid only through Authorized Mirai Fuel Cell Dealers. See an Authorized Fuel Cell Dealer for details and exclusions. Valid only in the continental U.S. 5. Valid only at Authorized Mirai Fuel Cell Dealers in the continental United States. See dealer for details and exclusions. 6. Hybrid-related components are covered for 8 years from original date of first use or 100,000 miles, whichever comes first. The HV battery may have longer coverage under emissions warranty. See Owner's Warranty and Maintenance Guide for details. 7. Single-occupant use of CA HOV lanes. Eligibility for government incentives, including any rebate and/or sticker, is based on income and is subject to change at any time. See [cleanvehicle rebate.org](http://cleanvehicle rebate.org) for more details. 8. The twenty-one complimentary days will expire after the third year and any unused days will not carry over. 9. Customers who lease a 2022 Mirai by March 31, 2023 will receive complimentary fuel for three years or \$15,000, whichever comes first. Customers who purchase a 2022 Mirai by March 31, 2023 will receive complimentary fuel for six years or \$15,000, whichever comes first. Complimentary fuel term begins as of card activation or 90 days after Mirai lease or purchase commencement date, whichever is earlier. Fuel card is nontransferable. 10. Dynamic Navigation depends on factors outside of Toyota's control, including an operative telematics device, a cellular connection, GPS signal, and the availability of a compatible wireless network, without which system functionality and availability may be limited or precluded. Services not available in every city or roadway. Use common sense when relying on information provided. Service may vary by vehicle and region. Registration is required. Subscription required after trial. Terms of Use apply. Data charges may apply. See *Owner's Manual* and <https://www.toyota.com/connected-services> for additional limitations and details. To learn about Toyota's data collection, use, sharing and retention practices, please visit <https://www.toyota.com/privacypvt/>. 11. The Dynamic Navigation trial period is at no extra cost and begins on the original date of purchase or lease of a new vehicle. Paid subscription required after trial to access the service. 12. The Bluetooth® word mark and logos are registered trademarks owned by Bluetooth SIG, Inc., and any use of such marks by Toyota is under license. A compatible Bluetooth®-enabled phone must first be paired. Phone performance depends on software, coverage and carrier. 13. The Bird's Eye View Camera does not provide a comprehensive view of the area surrounding the vehicle and you should also look around the vehicle, using mirrors to confirm surrounding clearance. Environmental conditions may limit effectiveness and view may become obscured. See *Owner's Manual* for additional limitations and details. 14. 402 EPA-estimated total range rating for 2022 Mirai XLE vs. 2021 competitors. Based on manufacturers' data as of 6/30/2021. Use for comparison purposes only. Your mileage will vary for many reasons, including your vehicle's condition and how/where you drive. See [www.fueleconomy.gov](http://www.fueleconomy.gov). 15. The Mirai meets all applicable Federal Motor Vehicle Safety Standards requirements, almost all of which apply equally to similar gasoline powered vehicles. In addition, Toyota has engineered the Mirai and its hydrogen tanks to meet international Global Technical Regulation No. 13. 16. Connected Services depends on factors outside of Toyota's control, including an operative telematics device, a cellular connection, GPS signal, and the availability of a compatible 4G wireless network, without which system functionality and availability may be limited or precluded, including access to response center and emergency support. Service may vary by vehicle and region. Subscription required after trial. Terms of Use apply. Data charges may apply. Apps and services subject to change at any time without notice. See [toyota.com/connected-services](https://www.toyota.com/connected-services) for details. To learn about Toyota's data collection, use, sharing and retention practices, please visit <https://www.toyota.com/privacypvt/>. Stolen vehicle police report required to use Stolen Vehicle Locator. 17. Safety Connect® depends on factors outside of Toyota's control, including an operative telematics device, a cellular connection, GPS signal, and the availability of a compatible wireless network, without which system functionality and availability may be limited or precluded, including access to response center and emergency support. Stolen vehicle police report required to use Stolen Vehicle Locator. Some features may require the Toyota app. Registration required. Subscription required after trial. Service subject to change at any time without notice. Terms of Use apply. Data charges may apply. Service may vary by vehicle and region. See usage precautions and service limitations in *Owner's Manual* and at [toyota.com/connected-services](https://www.toyota.com/connected-services) for additional details. To learn about Toyota's data collection, use, sharing and retention practices, please visit <https://www.toyota.com/privacypvt/>. The Safety Connect® trial period is at no extra cost and begins on the original date of purchase or lease of a new vehicle. Paid subscription required after trial to access the service. 18. Requires adequate cellular coverage and GPS signal strength. May not work in all areas. Service may vary by vehicle and region. See Toyota Dealer for details and exclusions. 19. Information provided is based on the last time data was collected from the vehicle and is not real time data. Service Connect depends on factors outside of Toyota's control, including an operative telematics device, a cellular connection, GPS signal, and the availability of a compatible wireless network, without which system functionality and availability may be limited or precluded. Service may vary by vehicle and region. Registration required. Subscription required after trial. Service subject to change at any time without notice. Terms of Use apply. Data charges may apply. See usage precautions and service limitations in *Owner's Manual* and at [toyota.com/connected-services](https://www.toyota.com/connected-services) for additional details. To learn about Toyota's data collection, use, sharing and retention practices, please visit <https://www.toyota.com/privacypvt/>. The Service Connect trial period is at no extra cost and begins on the original date of purchase or lease of a new vehicle. Subscription required after trial. Service Connect renewal will be included when Safety Connect®, Remote Connect or Destination Assist connected service renewal is selected. Service Connect is not renewable as a stand-alone service. 20. Use only if aware of circumstances surrounding vehicle and it is legal and safe to do so (e.g., do not remotely start engine if vehicle is in an enclosed space or vehicle is occupied by a child). Toyota's Remote Connect depends on an operative telematics device, a cellular connection, GPS signal strength and other factors outside of Toyota's control, which can limit system functionality and availability. Service may vary by vehicle and region. Registration and Toyota app download required. Subscription required after trial. Terms of Use apply. Data charges may apply. Remote start/stop not available on manual-transmission-equipped vehicles. Services subject to change at any time without notice. See usage precautions and service limitations in *Owner's Manual* and at <https://www.toyota.com/connected-services> for additional details. To learn about Toyota's data collection, use, sharing and retention practices, please visit <https://www.toyota.com/privacypvt/>. The Toyota Remote Connect trial period is at no extra cost and begins on the original date of purchase or lease of a new vehicle. Paid subscription required after trial to access the service. Terms of Use apply. 21. Eligible vehicle and wireless service required. Wi-Fi Connect depends on factors outside of Toyota's control, including an operative telematics device, a cellular connection, GPS signal, and the availability of a compatible wireless network, without which system functionality and availability may be limited or precluded. Wi-Fi Connect coverage and service not available everywhere. Valid in the contiguous U.S. and Alaska. Do not drive distracted. Go to [att.com/toyota](http://att.com/toyota) for terms and conditions. Data usage and charges apply. Up to 5 devices can be supported using in-vehicle connectivity. Apps and services subject to change at any time without notice. The Wi-Fi Connect trial begins at the time of activation and expires when 2GB of data is used or when the 3-month period ends. Subscription required after trial. Terms and conditions apply. 22. Destination Assist depends on an operative telematics device, a cellular connection, navigation map data and GPS signal strength and other factors outside of Toyota's control, which can limit system ability functionality or availability. Use common sense when relying on this information. Service may vary by vehicle and region. Registration required. Services subject to change at any time without notice. Terms of Use apply. See *Owner's Manual* and [toyota.com/connected-services](https://www.toyota.com/connected-services) for additional limitations and details. To learn about Toyota's data collection, use, sharing and retention practices, please visit <https://www.toyota.com/privacypvt/>. The Destination Assist trial period is at no extra cost and begins on the original date of purchase or lease of a new vehicle. Paid subscription required after trial to access the service. 23. Apps and services are subject to change at any time without notice. Data charges may apply. Apple CarPlay® functionality requires a compatible iPhone® connected with an approved data cable into the USB media port. Apple CarPlay® is a registered trademark of Apple Inc. 24. iPhone® is a registered trademark of Apple Inc. All rights reserved. 25. Android is a trademark of Google LLC. 26. Vehicle user interface is a product of Google and its terms and privacy statement apply. To use Android Auto on your audio display, you'll need an Android Auto compatible vehicle and Android phone. For phone compatibility visit: <https://www.android.com/autof/>. Requires compatible smartphone connected with an approved data cable into the USB media port, and data plan rates apply. Apps and services vary by phone carrier and are subject to change at any time without notice. Android, Android Auto and Waze are trademarks of Google. 27. Trial length and service availability may vary by model, model year or trim. Service will automatically stop at the end of your trial subscription period unless you decide to continue service. If you do not wish to enjoy your trial, you can cancel by calling the number below. All SiriusXM services require a subscription, each sold separately by SiriusXM after the trial period. **Service subject to the SiriusXM Customer Agreement and Privacy Policy; visit [www.siriusxm.com](http://www.siriusxm.com) to see complete terms and how to cancel which includes calling 1-866-635-2349.** Some services and features are subject to device capabilities and location availability. All fees, content and features are subject to change. SiriusXM, Pandora and all related logos are trademarks of Sirius XM Radio Inc. and its respective subsidiaries. 28. SiriusXM trial length and service availability may vary by model, model year or trim. 29. Amazon, Alexa and related marks are trademarks of Amazon.com, Inc. or its affiliates. Certain functions require compatible smartphone and download of <https://www.toyota.com/connected-services/toyotaapp/>. Operability depends on network availability, a cellular connection and GPS signal. Services subject to change at any time without notice. Data charges may apply. To learn more, go to <https://www.toyota.com/audio-multimedia/>. To learn more about Toyota's Connected Services' data collection, use, sharing and retention practices, please visit <https://www.toyota.com/support/privacy-rights/>. 30. JBL® is a registered trademark of Harman International Industries, Inc. 31. Toyota Safety Sense™ effectiveness is dependent on many factors including road, weather and vehicle conditions. Drivers are responsible for their own safe driving. Always pay attention to your surroundings and drive safely. See *Owner's Manual* for additional limitations and details. 32. The Pre-Collision System (PCS) with Pedestrian Detection (PD) is designed to determine if impact is imminent and help reduce impact speed and damage in certain frontal collisions involving a vehicle, a pedestrian or a bicyclist. PCS w/PD is not a substitute for safe and attentive driving. System effectiveness depends on many factors, such as speed, size and position of pedestrian or bicyclist and weather, light and road conditions. See *Owner's Manual* for additional limitations and details. 33. Full-Speed Range Dynamic Radar Cruise Control (DRCC) is designed to assist the driver and is not a substitute for safe and attentive driving practices. System effectiveness is dependent on many factors including road, weather and traffic conditions. See *Owner's Manual* for additional limitations and details. 34. Lane Departure Alert with Steering Assist is designed to read visible lane markers under certain conditions. It provides a visual and audible alert and slight steering force when lane departure is detected. It is not a collision-avoidance system or a substitute for safe and attentive driving. Effectiveness is dependent on many factors including road, weather and vehicle conditions. See *Owner's Manual* for additional limitations and details. 35. Automatic High Beams operate at speeds above 25 mph. Factors such as a dirty windshield, weather, lighting and terrain limit effectiveness, requiring the driver to manually operate the high beams. See *Owner's Manual* for additional limitations and details. 36. Lane Tracing Assist (LTA) is designed to read visible lane markers and detect other vehicles under certain conditions. It is only operational when DRCC is engaged. See *Owner's Manual* for additional limitations and details. 37. Do not rely exclusively on Road Sign Assist (RSA). RSA is a driver support system that utilizes the vehicle's forward-facing camera and navigation system (when data is available) to recognize certain road signs and provide information to the driver via the multi-information display and/or Head-Up Display. Effectiveness is dependent on road, weather, vehicle and sign conditions. Use common sense when using RSA and do not drive distracted. See *Owner's Manual* for additional limitations and details. 38. EPA-estimated 76 city/71 hwy/74 combined MPGe for 2022 Mirai XLE and 67 city/64 hwy/65 combined MPGe for 2022 Mirai Limited. MPGe is the EPA-equivalent of gasoline fuel efficiency for electric-mode operation. Use for comparison purposes only. Your MPGe/miles per kilogram will vary for many reasons, including your vehicle's condition and how/where you drive. See [www.fueleconomy.gov](http://www.fueleconomy.gov). 39. May not be compatible with all mobile phones, MP3/WMA players and like models. 40. This floor mat/floor

## DISCLOSURES

liner was designed specifically for use in your model and model year vehicle and SHOULD NOT be used in any other vehicle. To avoid potential interference with pedal operation, each mat/liner must be secured with its fasteners. Do not install a floor mat/floor liner on top of an existing floor mat/floor liner. **41.** HomeLink® and the HomeLink® house icon are registered trademarks of Gentex Corporation. **42.** Do not rely exclusively on the Blind Spot Monitor. Always look over your shoulder and use your turn signal. There are limitations to the function, detection and range of the monitor. See *Owner's Manual* for additional limitations and details. **43.** Do not rely exclusively on the Rear Cross-Traffic Alert system. Always look over your shoulder and use your mirrors to confirm rear clearance. There are limitations to the function, detection and range of the system. See *Owner's Manual* for additional limitations and details. **44.** When the system is on, Electric Parking Brake is designed to engage the Parking Brake under limited conditions. It may not hold the vehicle under all conditions. See *Owner's Manual* for additional limitations and details. **45.** When the system is on, Brake Hold is designed to keep the brakes engaged after the driver brings the vehicle to a complete stop. It may not hold the vehicle under certain conditions and does not function when the vehicle is in reverse. Brake Hold is not a substitute for safe and attentive driving. See *Owner's Manual* for additional limitations and details. **46.** Hill Start Assist Control is designed to help minimize backward rolling on steep ascents. It is not a substitute for safe driving judgment and practices. Factors including speed, grade, surface conditions and driver input can all affect whether HAC will be effective in preventing a loss of control. See *Owner's Manual* for additional limitations and details. **47.** The backup camera does not provide a comprehensive view of the rear area of the vehicle and you should also look around the vehicle, using mirrors to confirm rearward clearance. Environmental conditions may limit effectiveness and view may become obscured. See *Owner's Manual* for additional limitations and details. **48.** At speeds of 9 mph or less, Front and Rear Parking Assist with Automatic Braking (PA w/AB) is designed to assist drivers in avoiding potential collisions with nearby static objects when the vehicle is in Drive or Reverse and approaching crossing vehicles when the vehicle is in Reverse. Do not overly rely on PA w/AB. Always look around outside the vehicle and use mirrors to confirm clearance. Certain vehicle and environmental factors, including an object or vehicle's shape, size and composition, may affect the system's effectiveness. See *Owner's Manual* for additional limitations and details. **49.** Do not overly rely on Advanced Park and use only in accordance with applicable laws. When parking using the hands-free feature, always pay attention to the vehicle's surroundings. Before operating, refer to *Owner's Manual* for additional instructions and limitations. **50.** Cargo and load capacity limited by weight and distribution. Always properly secure cargo and cargo area. **51.** For Toyota hybrid, plug-in hybrid, and fuel cell and battery electric vehicles beginning with model year 2020, the hybrid (HV) battery is covered for 10 years from original date of first use or 150,000 miles, whichever comes first. Coverage is subject to the terms and conditions of your New Vehicle Limited Warranty. See *Owner's Warranty and Maintenance Guide* for details. **52.** Toyota strives to build vehicles to match customer interest and thus they typically are built with popular options and option packages. Not all options/packages are available separately and some may not be available in all regions of the country. See [toyota.com](http://toyota.com) for information about options/packages commonly available in your area. If you would prefer a vehicle without any or with different options, contact your dealer to check for current availability or the possibility of placing a special order. Color(s) depicted may vary based on multiple factors, including ambient lighting and the format in which it is being viewed (e.g., computer, mobile device or print). **53.** Genuine Toyota Paint Protection Film by 3M™ is designed for specific sections of the vehicle most prone to chipping and may vary depending on vehicle model. Select applications may require an additional charge. Toyota Genuine Accessory Warranty only applies when installation is performed by a trained Toyota-approved installer. See Toyota dealer for details. **54.** Qi wireless charging may not be compatible with all mobile phones, MP3/WMA players and like models. When using the wireless charging system, avoid placing metal objects between the wireless charger and the mobile device when charging is active. Doing so may cause metal objects to become hot and could cause burns. **55.** Rated for 12 volts/10 amps. See *Owner's Manual* for additional limitations and details. **56.** Vehicle Stability Control is an electronic system designed to help the driver maintain vehicle control under adverse conditions. It is not a substitute for safe and attentive driving practices. Factors including speed, road conditions, weather and driver steering input can all affect whether VSC will be effective in preventing a loss of control. See *Owner's Manual* for additional limitations and details. **57.** Brake Assist is designed to help the driver take advantage of ABS and is not a substitute for safe driving practices. Braking effectiveness also depends on proper vehicle maintenance, tire and road conditions. See *Owner's Manual* for additional limitations and details. **58.** Smart Stop Technology® operates only in the event of certain contemporaneous brake and accelerator pedal applications. When engaged, the system will reduce power to help the brakes bring the vehicle to a stop. Factors including speed, road conditions and driver input can all impact stopping distance. Smart Stop Technology® is not a substitute for safe and attentive driving and does not guarantee instant stopping. See *Owner's Manual* for additional limitations and details. **59.** Airbag systems are Supplemental Restraint Systems and are designed to inflate only under certain conditions and in certain types of severe collisions. To decrease the risk of injury from an inflating airbag, always wear seatbelts and sit upright in the middle of the seat as far back as possible. Do not put objects in front of an airbag or around the seatback. Do not use a rearward-facing child seat in any front passenger seat. See *Owner's Manual* for additional limitations and details. **60.** Building and/or parking structures may limit system effectiveness. Stolen vehicle police report required to use Stolen Vehicle Locator. For additional assistance contact the Toyota Customer Experience Center at 1-800-331-4331. **61.** The engine immobilizer is a state-of-the-art anti-theft system that is initiated when you insert your key into the ignition switch or bring a Smart Key fob into the vehicle. The engine will only start if the code in the transponder chip inside the key/fob matches the code in the vehicle's immobilizer. The transponder chip is embedded in the key/fob and can be costly to replace. If you lose a key or fob, your Toyota dealer can help or go to [www.aloa.org](http://www.aloa.org) to find a qualified locksmith in your area who can perform high-security key service. **62.** The Tire Pressure Monitor System alerts the driver when tire pressure is critically low. For optimal tire wear and performance, tire pressure should be checked regularly with a gauge; do not rely solely on the monitor system. See *Owner's Manual* for additional limitations and details. **63.** For information regarding the Federal and California Emission Control Warranties, and Tire Limited Warranties, please see the applicable *Warranty and Maintenance Guide*. Emission coverages vary under Federal and California regulations. **64.** Date and mileage limitations refer to whichever occurs first from the date of purchase. Warranty coverage is subject to other terms and conditions. Refer to applicable *Warranty and Maintenance Guide* for full details. **65.** EPA-estimated 402 total driving range rating for 2022 Mirai XLE and 357 total driving range rating for 2022 Mirai Limited. Use for comparison purposes only. Your mileage will vary for many reasons, including refueling practices, your vehicle's condition and how/where you drive. See [www.fueleconomy.gov](http://www.fueleconomy.gov). **66.** Do not overly rely on Teammate™'s Advanced Drive and Advanced Park capabilities and use in accordance with applicable laws. Advanced Drive is not an automated driving system. Driver is responsible for safe driving, must pay attention to surroundings and be prepared to take full control at all times. When using the hands-free feature of Advanced Park, always pay attention to the vehicle's surroundings. Before operating Teammate™ functions, refer to *Owner's Manual* for additional instructions and limitations. **67.** Advanced Drive is not an automated driving system. Do not overly rely on the system. Driver is responsible for safe driving and must always pay attention to surroundings and be prepared to take full control. Use system in accordance with applicable laws. System depends on factors outside of Toyota's control, including availability of a 4G compatible wireless network, without which functionality may be limited or precluded. Service subject to change at any time without notice. Advanced Drive-equipped vehicles include a 10-year subscription of connectivity to support functionality, after which a subscription is required, if available. Connected Services Terms of Use Apply. Before operating, refer to *Owner's Manual* for additional instructions and limitations. **68.** Do not exceed 120V. See *Owner's Manual* for additional limitations and details. **69.** All trials begin on the original date of purchase or lease of a new vehicle, with the exception of Wi-Fi for which the trial begins at the time of activation. Paid subscription required after trial in order to continue accessing the respective services. Terms of Use apply.

Toyota strives to build vehicles to match customer interest and thus they typically are built with popular options and option packages. Not all options/packages are available separately and some may not be available in all regions of the country. See [toyota.com](http://toyota.com) for information about options/packages commonly available in your area. If you would prefer a vehicle without any or with different options, contact your dealer to check for current availability or the possibility of placing a special order.

Color(s) depicted may vary based on multiple factors, including ambient lighting and the format in which it is being viewed (e.g., computer, mobile device or print).

Some vehicles are shown with available equipment. Seatbelts should be worn at all times. For details on vehicle specifications, standard features and available equipment in your area, contact your Toyota dealer. A vehicle with particular equipment may not be available at the dealership. Ask your Toyota dealer to help locate a specifically equipped vehicle.

All information presented herein is based on data available at the time of posting, is subject to change without notice and pertains specifically to mainland U.S.A. vehicles only. Vehicles shown may be prototypes, shown using visual effects and/or shown with options. Actual models may vary.



**Mobility**

For Toyota Mobility program details, go to [www.toyota.com/mobility](http://www.toyota.com/mobility) or call the Toyota Brand Engagement Center at 1-800-331-4331