

2018 86



 **TOYOTA** | *Let's  
Go  
Places*

# Perfection. Improved. The 2018 Toyota 86.

Pure driving just got better. The 86 family gets bigger in 2018 with the addition of the 86 GT and 86 GT Black. These new models show off the refined side of 86, with new interior appointments and functional, aggressive aerodynamics. And, of course, true to the 86 legend, all 86 models are just as comfortable devouring apexes as they are cruising down the freeway. So no matter what you demand from a sports car, the 2018 86 is engineered to deliver. The road is calling. Strap in.



86 GT shown in Thunder. Prototype shown with options.

# Built for those who take the long way there.

---

The 86 GT and 86 GT Black models elevate 86 from track warrior to grand touring machine. Amenities exclusive to these models include heated front seats with leather-trimmed side bolsters, silver contrast stitching and dual zone climate control. Unique aerodynamic components are as functional as they are stylish. And with the 86 GT Black, contrasting gloss- and matte-black trim pieces add a hint of menace to the elegance.



## FOCUSED COCKPIT

86 GT takes the driver-centric cabin to a whole new level. Silver contrast stitching accents the leather-lined bolsters of the heated sport front seats, steering wheel, shift boot and door cards. A unique instrument panel, featuring toggle-style switches and Push Button Start, further speaks to this car's performance pedigree.



## FUNCTIONAL AERODYNAMICS

86 GT and 86 GT Black come equipped with a standard rear wing that expertly blends function and style. Unique end plates have been designed to capture less turbulent air. Together with the underbody aerodynamic panel, this wing allows for optimal performance, helping these models achieve a drag coefficient of just 0.27.



## THE 86 GT BLACK

The all-new 86 GT Black series amplifies the attitude with a matte-black rear wing and Raven-black end wing plates. This Raven-black finish is also applied to the standard heated power mirrors, further enhancing this aggressive look.

PERFORMANCE/HANDLING



86 shown in Ablaze and Oceanic.

# Born on the track. Bred for the streets.

To be quick, one has to be balanced. Each facet of performance — speed, braking, handling — needs to unite in harmony in order to deliver maximum thrills. And with the 2018 Toyota 86, each aspect was carefully engineered to unite driver, car and road. Smart design and cutting-edge materials help make the body of 86 light and strong, helping boost efficiency and overall performance. This design also places the 2.0-liter Boxer engine low to the ground, helping optimize the center of gravity and front/rear weight distribution. It's a platform built for racing, but still civilized on the streets, and it gives you the best of all worlds.



## SPORT-TUNED SUSPENSION

The 2018 86 features a sport-tuned suspension designed to sharpen turn-in and enhance grip over uneven surfaces, enabling you to carve those corners with surgical precision. And when the drive calls for calmer inputs, like when cruising in the city, this suspension is supple enough to let everyone ride in total comfort.



## BODY-STRENGTH REINFORCEMENT

Intelligent use of high-strength materials, additional spot welds and advanced construction techniques helps reinforce the body strength of 86. And with this strength comes improved body rigidity, which helps reduce unwanted noise, harshness and vibration. Better yet, this strength also works as a performance enhancer, giving 86 exceptional acceleration, braking and handling capabilities.



## VEHICLE STABILITY CONTROL<sup>11</sup> TRACK MODE

When on a racetrack, the Vehicle Stability Control (VSC) Track Mode helps you push the limits of performance. When in Track Mode, this system allows you to approach the handling limits of 86 before the VSC kicks in, after which the system helps to gently nudge you back onto your desired driving line.

PERFORMANCE



86 GT shown in Thunder. Prototype shown with options.

# The hustle behind the moves.

86 is more powerful than ever, with its high-tech Boxer engine delivering up to an impressive 205 horsepower and 156 lb.-ft. of torque in manual transmission versions. And with a 7200-rpm redline, the thrills build with the revs. A close-ratio 6-speed transmission comes standard, giving you quickness off the line and the power you want in the corners. For the driving purist, the standard manual transmission gives short, precise throws for a driving experience like no other. And for those who prefer two pedals, the available 6-speed Electronically Controlled automatic Transmission with intelligence (ECT-i) features race-car-inspired paddle shifters mounted on the steering wheel. So no matter your preferred driving style, you're always in control.



## BOXER-FOUR ENGINE

Powering 86 is a potent 2.0-liter flat-four engine. With compact packaging, this engine sits low in the chassis for optimal balance. It's got some muscle too, with manual transmission models featuring an optimized power curve, 205 horsepower and 156 lb.-ft. of torque. In the automatic-equipped 86, this engine pumps out 200 horsepower and 151 lb.-ft. of torque.



## VSC<sup>11</sup> FULL-OFF MODE

Designed for track days, 86's unique Vehicle Stability Control (VSC) sport tuning allows the driver to shut off all stability assists. When on a racetrack, this Full-Off Mode prevents VSC from kicking in, putting the driver in full control.



## HILL START ASSIST CONTROL<sup>14</sup>

Every 86 comes standard with Hill Start Assist Control (HAC). This convenient technology helps to keep the vehicle from rolling backward when switching from brake to accelerator on an incline.





# Form inspired by function.

---

Long hood. Short rear deck. The standard in sports car design. With a heritage directly linked to iconic Toyotas like the 2000GT, the 2018 86 brings a stylish new twist to this timeless profile. Its sculpted shape has been expertly crafted to help give this ride a wind-cheating drag coefficient of just .29. The front chin spoiler and integrated canards help keep the front end firmly planted to the ground for sharpened turn-in and response. Available LED fog lights seamlessly integrate into the front bumper for even more light. And with its functional rear diffuser, 86 shows off its performance pedigree from every angle.



## LED LIGHTING

LED lighting front and rear amplifies the cutting-edge style of 86. Up front, the headlights feature LED Daytime Running Lights (DRL) — a unique light strip that gives 86 a bold, signature look. And in the rear, LED lighting helps take the taillights to a whole new level of cool.



## FENDER TRIM

Vortex generators on the fenders help control turbulent airflow, enhancing the stability of 86. These also work to keep the front end planted firmly to the ground, so you can stay connected to the road.



## CHROME-TIPPED DUAL EXHAUST

When you got it, flaunt it. 86 shows off its performance cred with a chrome-tipped dual exhaust. This cat-back exhaust system is constructed from high-grade stainless steel and features mandrel bends for smoother airflow, helping optimize performance.

SPORTY INTERIOR



86 interior shown in Black Granlux.

# Where driver and car become one.

Go ahead: Take the long way. The cabin of 86 brings plenty of comfort to every journey. Granlux trim wraps accents on the dashboard, door panels and upper-seat bolsters to bring a sense of sophistication. Aluminum sport pedals and sport gauges with a large center tach further drive home 86's commitment to performance. Standard tech includes a large 7-in. touch-screen display, auto-dimming rearview mirror with integrated backup camera,<sup>2</sup> *Bluetooth*<sup>®</sup> connectivity, and the Display Audio system. It all makes for a cabin that better connects you to your drive.



**STEERING WHEEL WITH AUDIO CONTROLS**

The ergonomic, leather-wrapped steering wheel feels great in your hands and, with its smaller diameter and quick-ratio steering, feels amazing in the corners. Integrated audio controls give you easier access to your music, so you can stay in control of it all.



**SPORT SEATS WITH SILVER CONTRAST STITCHING**

Deeply bolstered front seats help hold you in place when the roads get twisty. Granlux trim on the upper-seat bolsters provides extra grip and an added sense of comfort and luxury. And stunning silver contrast stitching further enhances the premium feel.



**FOLDING REAR SEAT**

Folding down the rear seat opens up a large total cargo area,<sup>2</sup> helping you carry an extra set of wheels and tires for those race-day excursions.

# Peace of mind for the road ahead.

86 is equipped with lots of standard safety technologies. Smart Stop Technology<sup>®</sup> (SST)<sup>13</sup> helps reduce engine power when both the brake and gas pedals are pressed at the same time under certain conditions. A standard auto-dimming rearview mirror with integrated backup camera<sup>2</sup> helps you see what's behind you while backing up. The standard Star Safety System<sup>™</sup> brings Vehicle Stability Control (VSC),<sup>11</sup> Traction Control (TRAC), Anti-lock Brake System (ABS), Electronic Brake-force Distribution (EBD), Brake Assist (BA)<sup>12</sup> and Smart Stop Technology.<sup>®</sup> And six standard airbags<sup>15</sup> include a driver and front passenger Advanced Airbag System, driver and front passenger seat-mounted side airbags, and front and rear side curtain airbags.





## 86

### Powertrain

---

- 2.0L 4-Cylinder Horizontally Opposed Engine
- 205 hp @ 7000 rpm; 156 lb.-ft. of torque @ 6400 rpm (manual)
- 200 hp @ 7000 rpm; 156 lb.-ft. of torque @ 6400 rpm (automatic)
- 6-speed close-ratio manual transmission
- 6-speed Electronically Controlled automatic Transmission with intelligence (ECT-i)
- Torsen<sup>®20</sup> limited-slip differential

### Exterior Features

---

- LED projector-beam headlights, Daytime Running Lights (DRL) and rear combination lights with all-LED lighting
- Chrome-tipped dual exhaust
- Front fender-mounted vortex generators
- 17-in. twisted spoke alloy wheels

### Interior Features

---

- Sport front bucket seats with Granlux suede-like material
- Analog tachometer with programmable rev indicator
- Auto-dimming rearview mirror with integrated backup camera display<sup>2</sup>
- Display Audio with 7-in. touch-screen display
- Leather-trimmed tilt/telescopic steering wheel

### Options

---

- All-season tires
- Display Audio with Navigation<sup>23</sup>



## 86 GT

Adds to or replaces features offered on 86

### Powertrain

---

- 2.0L 4-Cylinder Horizontally Opposed Engine
- 205 hp @ 7000 rpm; 156 lb.-ft. of torque @ 6400 rpm (manual)
- 200 hp @ 7000 rpm; 156 lb.-ft. of torque @ 6400 rpm (automatic)
- 6-speed close-ratio manual transmission
- 6-speed Electronically Controlled automatic Transmission with intelligence (ECT-i)
- Torsen<sup>®20</sup> limited-slip differential

### Exterior Features

---

- LED fog lights
- Color-keyed heated power outside mirrors
- Rear wing in matte black with aerodynamic end plates
- Aerodynamic underbody panel

### Interior Features

---

- Heated sport front bucket seats with leather and Granlux suede-like inserts
- 4.2-in. TFT Multi-Information Display (MID) with vehicle performance information
- Smart Key System<sup>3</sup> with Push Button Start
- Dual zone automatic climate control
- Leather-trimmed tilt/telescopic steering wheel with MID controls

### Options

---

- All-season tires
- Display Audio with Navigation<sup>23</sup>



## 86 GT Black

Adds to or replaces features offered on 86 GT

### Powertrain

---

- 2.0L 4-Cylinder Horizontally Opposed Engine
- 205 hp @ 7000 rpm; 156 lb.-ft. of torque @ 6400 rpm (manual)
- 200 hp @ 7000 rpm; 156 lb.-ft. of torque @ 6400 rpm (automatic)
- 6-speed close-ratio manual transmission
- 6-speed Electronically Controlled automatic Transmission with intelligence (ECT-i)
- Torsen<sup>®20</sup> limited-slip differential

### Exterior Features

---

- Rear wing in matte black with aerodynamic end plates and supports in Raven (not available with Raven, Oceanic and Asphalt exterior colors)
- Heated power outside mirrors in Raven (not available with Raven, Oceanic and Asphalt exterior colors)

### Options

---

- All-season tires
- Display Audio with Navigation<sup>23</sup>

# Color



Raven



Oceanic



Ablaze



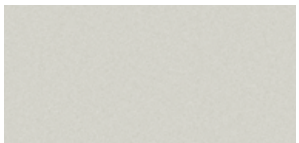
Asphalt



Thunder

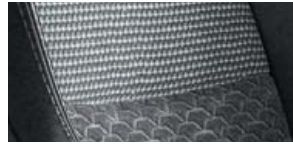


Steel



Halo<sup>24</sup>

# Trim



Black Granlux



Black fabric with leather trim

# Wheels



17-in. twisted spoke alloy wheel

ACCESSORIES

A wide range of Genuine Toyota Accessories is available to help make driving your 86 even more fun. Now your 86 can reflect your personal style. There's something for everyone. Some accessories may not be available in all regions of the country. For a complete list of accessories, go to [toyota.com/86](http://toyota.com/86).

Alloy wheel locks  
All-weather floor mats<sup>5</sup>  
Cargo tote<sup>21</sup>  
Carpet trunk mat  
Coin holder/ashtray cup  
Display Audio with Navigation<sup>23</sup>

Emergency assistance kit  
First aid kit  
LED fog lights  
Mudguards  
Paint protection film<sup>25</sup>  
Rear bumper appliqué

Rear spoiler  
TRD 17-in. forged wheel  
TRD 18-in. alloy wheel  
TRD brake pads  
TRD lowering springs  
TRD performance air filter

TRD performance cold air intake  
TRD performance dual exhaust  
TRD quickshifter  
TRD sway bar kit  
Universal tablet holder<sup>26</sup>



LED fog lights



TRD quickshifter



Mudguards



Display Audio with Navigation<sup>23</sup>



TRD 18-in. alloy wheel



TRD performance dual exhaust



All-weather floor mats<sup>5</sup>




TRD lowering springs

FEATURES<sup>1</sup>

EXTERIOR	86	86 GT	86 GT Black		86	86 GT	86 GT Black
17-in. twisted spoke alloy wheels	S	S	S	Color-keyed, heated power outside mirrors	—	S	—
Rear wing in matte black with aerodynamic end plates	—	S	—	Heated power outside mirrors in Raven (not available with Raven, Oceanic and Asphalt exterior colors)	—	—	S
Rear wing in matte black with aerodynamic end plates and supports in Raven (not available with Raven, Oceanic and Asphalt exterior colors)	—	—	S	Variable intermittent windshield wipers	S	S	S
LED projector low- and high-beam headlights with auto on/off feature, and turn signal indicators with embossed "86" lens	S	S	S	"86" front fender badge	S	S	S
LED Daytime Running Lights (DRL)	S	S	S	Rear window defogger	S	S	S
LED fog lights	—	S	S	Dual chrome-tipped exhaust	S	S	S
LED rear combination lights (brake and turn signal indicators)	S	S	S	Front fender-mounted vortex generators	S	S	S
Color-keyed power outside mirrors	S	—	—	Rear bumper with aerodynamic lower diffuser, "86" appliqué	S	S	S
				Aerodynamic underbody panel	—	S	S

INTERIOR							
Auto-dimming rearview mirror with integrated backup camera <sup>2</sup> display	S	S	S	Leather-trimmed tilt/telescopic steering wheel with silver contrast stitching, "86" center cap logo, audio and MID controls, and paddle shifters (automatic transmission)	—	S	S
Air conditioning with filter	S	—	—	Parking brake and leather cover with silver contrast stitching	—	S	S
Dual zone automatic climate control (individual temperature settings for the driver and front passenger) with interior filter	—	S	S	Cruise control	S	S	S
Power windows with driver and front passenger auto up/down and jam protection	S	S	S	Sport front bucket seats with black shoulder pads	S	—	—
Power door locks	S	S	S	Heated two-stage sport front seats with leather bolsters and Granlux suede-like inserts with silver contrast stitching	—	S	S
Multi-function in-key remote keyless entry system with lock, unlock, panic and trunk-release functions	S	—	—	Height-adjustable driver's seat	S	S	S
Smart Key System <sup>3</sup> on driver and passenger doors with Push Button Start, remote keyless entry system with lock, two-stage unlock, panic and trunk release functions	—	S	S	Knee support cushions for spirited driving	S	—	—
Anti-theft system with engine immobilizer <sup>4</sup>	S	—	—	Leather-like knee support cushions for spirited driving	—	S	S
Anti-theft system with alarm and engine immobilizer <sup>4</sup>	—	S	S	Granlux suede-like material accents on door panels, armrest and instrument panel surround, including an "86" logo embroidered on passenger-side instrument panel fascia	S	—	—
Multi-Information Display (MID)	S	—	—	Granlux suede-like material accents on door panels, armrest and instrument panel surround	—	S	S
4.2-in. TFT Multi-Information Display (MID) with "86" logo on start-up and the following vehicle data: odometer, twin tripmeters, outside ambient temperature, engine coolant/oil temperatures, voltmeter, average trip speed, driving time and miles covered, stopwatch/lap timer, current/average fuel consumption, rpm and hp/torque curves, instantaneous and historical G-force friction circle with digital readout	—	S	S	Granlux suede-like material covering the top of the instrument cluster hood, silver contrast stitching throughout the interior, and silver-stitched "86" logo embroidered on passenger-side instrument panel fascia	—	S	S
Digital clock	S	S	S	Leather gearshift boot with silver contrast stitching	—	S	S
Digital speedometer	S	S	S	One-piece folding rear seatback	S	S	S
Dual analog and digital speedometer	S	S	S	Dual sun visors with vanity mirrors	S	S	S
Analog tachometer with programmable rev indicator, visual and audible	S	S	S	Four-piece carpeted floor mats <sup>5</sup>	S	S	S
Tripmeter	S	S	S	Center console with 12V outlet, sliding dual cup holder and storage area	S	S	S
Leather-trimmed tilt/telescopic steering wheel with silver contrast stitching, "86" center cap logo, and audio controls (manual transmission)	S	—	—	Display Audio — 7-in. touch-screen display, AM/FM player, Aha Radio™ app <sup>6</sup> with over 100,000 stations, eight speakers, auxiliary audio jack, USB 2.0 port <sup>7</sup> with iPod® connectivity and control, voice recognition with voice training, hands-free phone capability, phone book access (2500 phone book contacts) and music streaming <sup>8</sup> via Bluetooth® <sup>9</sup> wireless technology, HD Radio™ <sup>10</sup> Technology, Gracenote® album cover art, steering wheel audio controls	S	S	S
Leather-trimmed tilt/telescopic steering wheel with silver contrast stitching, "86" center cap logo, audio controls and paddle shifters (automatic transmission)	S	—	—	Roof-mounted color-keyed shark-fin AM/FM antenna	S	S	S
Leather-trimmed tilt/telescopic steering wheel with silver contrast stitching, "86" center cap logo, audio and MID controls (manual transmission)	—	S	S				

SAFETY AND CONVENIENCE

 Star Safety System™ — includes Vehicle Stability Control (VSC); <sup>11</sup> Traction Control (TRAC), Anti-lock Brake System (ABS), Electronic Brake-force Distribution (EBD), Brake Assist (BA); <sup>12</sup> and Smart Stop Technology® (SST) <sup>13</sup>	S	S	S	Three-point seatbelts for all seating positions; driver-side Emergency Locking Retractor (ELR) and Automatic/Emergency Locking Retractor (ALR/ELR) on all passenger belts	S	S	S
Vehicle Stability Control (VSC) <sup>11</sup> Track Mode	S	S	S	LATCH (Lower Anchors and Tethers for Children) includes lower anchors on outboard rear seats and tether anchors on all rear seats	S	S	S
Hill Start Assist Control (HAC) <sup>14</sup>	S	S	S	Tire Pressure Monitor System (TPMS) <sup>16</sup>	S	S	S
Six airbags <sup>15</sup> — includes driver and front passenger Advanced Airbag System, driver and front passenger outboard seat-mounted side airbags, and front and rear side curtain airbags	S	S	S	ToyotaCare <sup>17</sup> featuring a no cost maintenance plan with roadside assistance <sup>18</sup>	S	S	S

See numbered footnotes in Disclosures section.

S = Standard — = Not Available



SPECIFICATIONS

MECHANICAL/PERFORMANCE	86	86 GT	86 GT Black
<b>ENGINE</b>			
2.0-Liter 4-Cylinder Horizontally Opposed Engine with DOHC 16-Valve Cylinder Heads and Dual Variable Valve Timing; 205 hp @ 7000 rpm (manual transmission) (SAE Net); 156 lb.-ft. of torque @ 6400-6600 rpm	Standard	Standard	Standard
2.0-Liter 4-Cylinder Horizontally Opposed Engine with DOHC 16-Valve Cylinder Heads and Dual Variable Valve Timing; 200 hp @ 7000 rpm (automatic transmission) (SAE Net); 151 lb.-ft. of torque @ 6400-6600 rpm	Standard	Standard	Standard
Direct Ignition System	Standard	Standard	Standard
Bore x stroke, mm. (in.)	86.0 x 86.0 (3.39 x 3.39)	86.0 x 86.0 (3.39 x 3.39)	86.0 x 86.0 (3.39 x 3.39)
Compression ratio	12.5 : 1	12.5 : 1	12.5 : 1
Fuel octane rating <sup>19</sup>	Premium unleaded fuel recommended	Premium unleaded fuel recommended	Premium unleaded fuel recommended
Engine oil type, grade, weight	Toyota Genuine Motor Oil, SAE 0W-20, ILSAC GF-5 engine oil	Toyota Genuine Motor Oil, SAE 0W-20, ILSAC GF-5 engine oil	Toyota Genuine Motor Oil, SAE 0W-20, ILSAC GF-5 engine oil
Engine oil capacity	5.7 US qt.	5.7 US qt.	5.7 US qt.
<b>TRANSMISSION</b>			
6-speed close-ratio manual transmission	Standard	Standard	Standard
Short-throw 6-speed close-ratio manual transmission with triple-cone synchromesh on 1st/2nd/3rd gears, ball-bearing mounted shift linkage, and Reverse gear lockout protection	Standard	Standard	Standard
6-speed Electronically Controlled automatic Transmission with intelligence (ECT-i)	Standard	Standard	Standard
6-speed Electronically Controlled automatic Transmission with intelligence (ECT-i), sequential shift mode with Dynamic Rev Management and paddle shifters, Vehicle Stability Control <sup>11</sup> Track Mode, Sport Mode, Snow Mode, and an automatic transmission fluid heat exchanger	Standard	Standard	Standard
<b>FUEL INJECTION SYSTEM</b>			
Toyota D-4S Dual Injection System (Direct and Sequential Port Injection)	Standard	Standard	Standard
<b>DRIVETRAIN</b>			
Front engine, Rear-Wheel Drive (RWD)	Standard	Standard	Standard
Torsen <sup>®20</sup> Limited-Slip Differential (LSD)	Standard	Standard	Standard
<b>BODY CONSTRUCTION</b>			
Reinforced unibody construction with lightweight, low center of gravity design	Standard	Standard	Standard
Coefficient of drag (Cd)	0.29	0.27	0.27
<b>SUSPENSION</b>			
Sport-tuned independent MacPherson strut front suspension, independent double-wishbone style multi-link rear suspension	Standard	Standard	Standard
Solid front and rear stabilizer bars	Standard	Standard	Standard
Stabilizer bar diameter, front/rear (mm.)	18.0/15.0	18.0/15.0	18.0/15.0
<b>STEERING</b>			
Sport-calibrated Electric Power Steering (EPS); power-assisted rack-and-pinion	Standard	Standard	Standard
Steering wheel turns (lock-to-lock)	2.48	2.48	2.48
Turning diameter — curb to curb (ft.)	36.1	36.1	36.1
<b>BRAKES</b>			
Power-assisted ventilated 11.58-in. front disc brakes; ventilated 11.42-in. rear disc brakes	Standard	Standard	Standard
Front rotor size, diameter x thickness, mm. (in.)	294.0 x 24.0 (11.58 x 0.95)	294.0 x 24.0 (11.58 x 0.95)	294.0 x 24.0 (11.58 x 0.95)
Rear rotor size, diameter x thickness, mm. (in.)	290.0 x 18.0 (11.42 x 0.71)	290.0 x 18.0 (11.42 x 0.71)	290.0 x 18.0 (11.42 x 0.71)

See numbered footnotes in Disclosures section.

SPECIFICATIONS (continued)

DIMENSIONS	86	86 GT	86 GT Black
<b>EXTERIOR (in.)</b>			
Length (in.)	166.7	166.7	166.7
Width (in.)	69.9	69.9	69.9
Height (in.)	50.6	50.6	50.6
Ground clearance (in.)	4.9	4.9	4.9
Wheelbase (in.)	101.2	101.2	101.2
Tread (front/rear) (in.)	59.8/60.6	59.8/60.6	59.8/60.6
Wheel diameter x width, bolt pattern, inset	17 x 7 in. alloys, 5 x 100 mm. bolt pattern, + 48 mm. inset	17 x 7 in. alloys, 5 x 100 mm. bolt pattern, + 48 mm. inset	17 x 7 in. alloys, 5 x 100 mm. bolt pattern, + 48 mm. inset
<b>INTERIOR (in.)</b>			
Head room — front/rear (in.)	37.1/35.0	37.1/35.0	37.1/35.0
Shoulder room — front/rear (in.)	54.5/51.7	54.5/51.7	54.5/51.7
Leg room — front/rear (in.)	41.9/29.9	41.9/29.9	41.9/29.9
Hip room — front/rear (in.)	53.1/45.3	53.1/45.3	53.1/45.3
<b>WEIGHTS AND CAPACITIES</b>			
Power to weight ratio (curb weight lb./hp)	13.5	13.5	13.5
Curb weight (lb.)	2776	2776	2776
Gross Vehicle Weight Rating GVWR (lb.)	3682	3682	3682
Seating capacity	4	4	4
Passenger volume (cu. ft.)	76.5	76.5	76.5
Cargo volume (rear seats up) (cu. ft.) <sup>21</sup>	6.9	6.9	6.9
Fuel capacity (gal.)	13.2	13.2	13.2
Transmission fluid type, weight (capacity)	Toyota Genuine Gear Oil, SAE 75W-90, API GL-3 (2.3 US qt.)	Toyota Genuine Gear Oil, SAE 75W-90, API GL-3 (2.3 US qt.)	Toyota Genuine Gear Oil, SAE 75W-90, API GL-3 (2.3 US qt.)
Differential fluid type, weight (capacity)	Toyota Genuine Differential Gear Oil LX, SAE 75W-85, API GL-5 (1.22 US qt.)	Toyota Genuine Differential Gear Oil LX, SAE 75W-85, API GL-5 (1.22 US qt.)	Toyota Genuine Differential Gear Oil LX, SAE 75W-85, API GL-5 (1.22 US qt.)
<b>TIRES</b>			
Type	215/45R17 87W	215/45R17 87W	215/45R17 87W
Spare	Temporary	Temporary	Temporary
<b>MILEAGE ESTIMATES (mpg city/highway/combined)<sup>22</sup></b>			
Manual transmission	21/28/24	21/28/24	21/28/24
Automatic transmission	24/32/27	24/32/27	24/32/27

**WARRANTIES**

Every Toyota Car, Truck and SUV is built to exceptional standards. And that's not idle boasting. We back it up with these Limited Warranty Coverages:

**Basic:** 36 months/36,000 miles (all components other than normal wear and maintenance items).

**Powertrain:** 60 months/60,000 miles (engine, transmission/transaxle, drive system, seatbelts and airbags).

**Rust-Through:** 60 months/unlimited miles (corrosion perforation of sheet metal).

**Emissions:** Coverages vary under Federal and California regulations. Refer to applicable *Warranty and Maintenance Guide* for details.

**Accessories:** For Genuine Toyota Accessories purchased at the time of the new vehicle purchase, the Toyota Accessory Warranty coverage is in effect for 36 months/36,000 miles from the vehicle's in-service date, which is the same coverage as the Toyota New Vehicle Limited Warranty.

For Genuine Toyota Accessories purchased after the new vehicle purchase the coverage is 12 months, regardless of mileage, from the date the accessory was installed on the vehicle, or the remainder of any applicable new vehicle warranty, whichever provides greater coverage.

You may be eligible for transportation assistance if it's necessary that your vehicle be kept overnight for repairs covered under warranty. Please see your authorized Toyota dealership for further details.

For complete details about Toyota's warranties, please visit [www.toyota.com](http://www.toyota.com), refer to the applicable *Warranty and Maintenance Guide* or see your Toyota dealer.

## CARS BUILT FOR THE WAY YOU LIVE

At Toyota, we build cars for how you live. From building advanced safety features designed to help prevent crashes to driving cross-country to understand how we can make your driving experience better, our work starts with understanding your needs. Building cars for how you live also means thinking about tomorrow — from fuel efficiency and environmental innovations, to things beyond cars, like a bicycle that you can control with your mind. And because what we learn building cars can help improve lives in other places, we do things like help communities rebuild their homes quickly after a disaster and work with soup kitchens to help them serve more people faster. Toyota. Built for how you live. Together we are going places.

## DISCLOSURES

**1.** Toyota strives to build vehicles to match customer interest and thus they typically are built with popular options and option packages. Not all options/packages are available separately and some may not be available in all regions of the country. See [toyota.com](http://toyota.com) for information about options/packages commonly available in your area. If you would prefer a vehicle without any or with different options, contact your dealer to check for current availability or the possibility of placing a special order. **2.** The backup camera does not provide a comprehensive view of the rear area of the vehicle. You should also look around outside your vehicle and use your mirrors to confirm rearward clearance. Environmental conditions may limit effectiveness and view may become obscured. See *Owner's Manual* for additional limitations and details. **3.** The Smart Key System may interfere with some pacemakers or cardiac defibrillators. If you have one of these medical devices, please talk to your doctor to see if you should deactivate this system. **4.** The engine immobilizer is a state-of-the-art anti-theft system. When you insert your key into the ignition switch or bring a Smart Key fob into the vehicle, the key transmits an electronic code to the vehicle. The engine will only start if the code in the transponder chip inside the key/fob matches the code in the vehicle's immobilizer. Because the transponder chip is embedded in the key/fob, it can be costly to replace. If you lose a key or fob, your Toyota dealer can help. Alternatively, you can find a qualified independent locksmith to perform high-security key services by consulting your local Yellow Pages or by contacting [www.aloa.org](http://www.aloa.org). **5.** This floor mat was designed specifically for use in your model and model year vehicle and SHOULD NOT be used in any other vehicle. To avoid potential interference with pedal operation, each mat must be secured with its fasteners. Do not install a floor mat on top of an existing floor mat. **6.** Aha Radio is a trademark of Harman International Industries Inc. Apps/services vary by phone carrier and are subject to change. Data charges may apply. **7.** May not be compatible with all mobile phones, MP3/WMA players and like models. **8.** iPod® and iPhone® are registered trademarks of Apple Inc. All rights reserved. **9.** The Bluetooth® word mark and logos are registered trademarks owned by Bluetooth SIG, Inc., and any use of such marks by Toyota is under license. A compatible Bluetooth®-enabled phone must first be paired. Phone performance depends on software, coverage and carrier. **10.** HD Radio™ Technology manufactured under license from iBiquity Digital Corporation U.S. and Foreign Patents. HD Radio™ and the HD, HD Radio, and "Arc" logos are proprietary trademarks of iBiquity Digital Corp. **11.** Vehicle Stability Control is an electronic system designed to help the driver maintain vehicle control under adverse conditions. It is not a substitute for safe and attentive driving practices. Factors including speed, road conditions, weather and driver steering input can all affect whether VSC will be effective in preventing a loss of control. See *Owner's Manual* for additional limitations and details. **12.** Brake Assist is designed to help the driver take full advantage of the benefits of ABS. It is not a substitute for safe driving practices. Braking effectiveness also depends on proper vehicle maintenance, and tire and road conditions. See *Owner's Manual* for additional limitations and details. **13.** Smart Stop Technology® operates only in the event of certain contemporaneous brake and accelerator pedal applications. When engaged, the system will reduce power to help the brakes bring the vehicle to a stop. Factors including speed, road conditions and driver input can all impact stopping distance. Smart Stop Technology® is not a substitute for safe and attentive driving and does not guarantee instant stopping. See *Owner's Manual* for details. **14.** Hill Start Assist Control is designed to help minimize backward rolling on steep ascents. It is not a substitute for safe driving judgment and practices. Factors including speed, grade, surface conditions and driver input can all affect whether HAC will be effective in preventing a loss of control. See *Owner's Manual* for additional limitations and details. **15.** All the airbag systems are Supplemental Restraint Systems. All airbags (if installed) are designed to inflate only under certain conditions and in certain types of severe collisions. To decrease the risk of injury from an inflating airbag, always wear seatbelts and sit upright in the middle of the seat as far back as possible. Do not put objects in front of an airbag or around the seatback. Do not use a rearward-facing child seat in any front passenger seat. See *Owner's Manual* for additional limitations and details. **16.** The Tire Pressure Monitor System alerts the driver when tire pressure is critically low. For optimal tire wear and performance, tire pressure should be checked regularly with a gauge; do not rely solely on the monitor system. See *Owner's Manual* for details. **17.** ToyotaCare plan covers normal factory scheduled service for 2 years or 25K miles, whichever comes first. See Toyota dealer for details and exclusions. Valid only in the continental U.S. and Alaska. **18.** Roadside Assistance coverage is 2 years unlimited mileage. Does not include parts and fluids, except emergency fuel delivery. See Toyota Dealer for details and exclusions. Valid only in the continental U.S. and Alaska. **19.** Ratings achieved using the required premium unleaded gasoline with an octane rating of 93 or higher. If premium fuel is not used, performance will decrease. If unleaded gasoline with an octane rating of 93 (98 RON) is not available, unleaded gasoline with an octane rating of 91 (95 RON) may be used with no detriment to engine durability or drivability. **20.** Torsen® is a registered trademark of Zexel Torsen, Inc. **21.** Cargo and load capacity limited by weight and distribution. **22.** 2018 EPA-estimated mileage. Actual mileage will vary. **23.** Availability and accuracy of the information provided by the navigation system is dependent upon many factors. Use common sense when relying on information provided. Services and programming subject to change. Services not available in every city or roadway. Updates may be available from your dealer at an additional cost. See *Owner's Manual* for details. **24.** Extra-cost color. **25.** The Toyota Genuine Accessory Warranty will only apply when the installation is performed by a trained Toyota-approved installer. Please see dealer for details. **26.** The universal tablet holder is intended for passengers only. Drivers should always be sure to obey traffic regulations and maintain awareness of the road and traffic conditions at all times. Use of aftermarket accessories may pose an increased risk of injury to occupants in the event of an accident. Tablet sold separately.

Some vehicles are shown with available equipment. Seatbelts should be worn at all times. For details on vehicle specifications, standard features and available equipment in your area, contact your Toyota dealer. A vehicle with particular equipment may not be available at the dealership. Ask your Toyota dealer to help locate a specifically equipped vehicle.

All information presented herein is based on data available at the time of posting, is subject to change without notice and pertains specifically to mainland U.S.A. vehicles only. Prototypes shown. Actual production vehicles will vary.



For Toyota Mobility program details, go to [www.toyota.com/mobility](http://www.toyota.com/mobility) or call the Toyota Customer Assistance Center at 1-800-331-4331

