

2020 86



The road is calling. Strap in.

Awaken your inner driver with the pure driving experience of the 2020 Toyota 86. Its responsive 2.0L boxer engine and short-throw 6-speed manual transmission engage the senses to deliver authentic back-road thrills. Or opt for the available paddle-shifting 6-speed automatic for fast, smooth shifts and precise control. The available TRD Handling Package, featuring Brembo^{®3} brakes and SACHS^{®4} performance dampers, helps keep you grounded and in command on every twist and turn. And the available 86 Hakone Edition, finished in exclusive Hakone Green with 17-in. bronze-colored wheels,² pays tribute to one of the greatest driving roads in the world. So whether workdays or track days are your priority, 86 is engineered to deliver.



86 GT shown in Halo²⁹ with available TRD Handling Package. Vehicle shown using visual effects. Production model/options may vary.

See numbered footnotes in Disclosures section.

Built for those who take the long way there.

86 GT elevates 86 from track warrior to grand touring machine. Amenities exclusive to the GT include heated front seats with leather-trimmed side bolsters, contrast stitching and dual zone climate control, along with unique aerodynamic components that are as functional as they are stylish.



FOCUSED COCKPIT

86 GT takes the driver-centric cabin to a whole new level. Contrast stitching accents the leather-lined bolsters of the heated sport front seats, steering wheel, shift boot and door cards. And the standard 4.2-in. TFT Multi-Information Display (MID) keeps tabs on pertinent performance data, including lap timer, horsepower/torque curves and a G-force friction circle.



FUNCTIONAL AERODYNAMICS

86 GT comes equipped with a standard rear wing that expertly blends function and style. Additionally, unique end plates have been designed to capture less turbulent air. Together with the underbody aerodynamic panel, this wing allows for excellent aerodynamic performance, helping 86 GT achieve a drag coefficient of just 0.27.



AGGRESSIVE DESIGN

True to 86 GT's nature, the standard rear wing is a stealthy matte black, while front LED fog lights and color-keyed outside mirrors add a definitive touch. In front, its energetic front fascia highlights its low-and-wide athletic stance. And in the back, the rear diffuser provides more downforce and acts as a stylish sign-off to 86 GT's assertive design.

NEW TRD HANDLING PACKAGE



86 GT shown in Halo²⁹ with available TRD Handling Package.

See numbered footnotes in Disclosures section.

Unmistakably a sports car.

The available TRD Handling Package is for drivers who want a more responsive and athletic feel on the road. SACHS®⁴ performance dampers decrease bounce and sway for better handling on tight turns. 18-in. alloy wheels² with Michelin® Pilot® Sport 4 tires help you grip the pavement. And an underbody aerodynamic panel helps reduce drag. Grounded on every twist and turn, this handling package will reintroduce you to the thrill of driving.



SACHS®⁴ PERFORMANCE DAMPERS

SACHS® dampers help reduce body roll and improve steering feedback for better communication between car and driver. And on tight turns, they decrease bounce and sway for a more-controlled drive.



18-IN. ALLOY WHEELS² & BREMBO®³ BRAKES

Refined 18-in. split-spoke alloy wheels with Michelin® Pilot® Sport 4 tires improve your grip to help you tightly hug the pavement. And its upgraded Brembo® brakes set with 4-piston front/2-piston rear brake calipers coupled with large 12.8-in. front and 12.4-in. rear rotors help you brake later, harder and faster.



REAR TRD EMBLEM

Those three letters on the trunk mean a lot. Toyota Racing Development (TRD) is Toyota's factory-backed racing division. TRD engineers have spent countless hours designing, testing and tuning with passion to help enthusiasts get more performance from their vehicles while maintaining factory levels of quality and reliability.

PERFORMANCE AND DRIVING EXPERIENCE



86 GT shown in Halo²⁹ with available TRD Handling Package.

See numbered footnotes in Disclosures section.

The hustle behind the moves.

A sports car in the truest sense, 86's high-tech boxer engine delivers up to an impressive 205 horsepower²⁴ and 156 lb.-ft. of torque in manual transmission versions. The 7200 rpm redline builds thrills with the revs. And a close-ratio 6-speed transmission comes standard, giving you quickness off the line and the power you want out of the corners. For the driving purist, the standard manual transmission gives short, precise throws for a driving experience like no other. And for those who prefer two pedals, the available 6-speed Electronically Controlled automatic Transmission with intelligence (ECT-i) and Dynamic Rev Management features race car-inspired paddle shifters mounted on the steering wheel. So no matter your preferred driving style, you're always in control.



BOXER-FOUR ENGINE

Powering 86 is a potent 2.0-liter flat-four engine. With compact packaging, this engine sits low in the chassis for enhanced balance. It's got some muscle, too, with manual-transmission cars featuring 205 horsepower²⁴ and 156 lb.-ft. of torque. In the automatic-equipped 86, this engine pumps out 200 horsepower and 151 lb.-ft. of torque.



VSC¹⁷ FULL-OFF MODE

Designed for track days, 86's Vehicle Stability Control (VSC) sport tuning allows the driver to shut off all stability assists. When on a racetrack, this Full-Off Mode prevents the VSC from kicking in, putting the driver in full control.



HILL START ASSIST CONTROL²⁰

Every 86 comes standard with Hill Start Assist Control (HAC). This convenient technology helps to keep the vehicle from rolling backward when switching from brake to accelerator on an incline.

The 2020 Hakone Edition

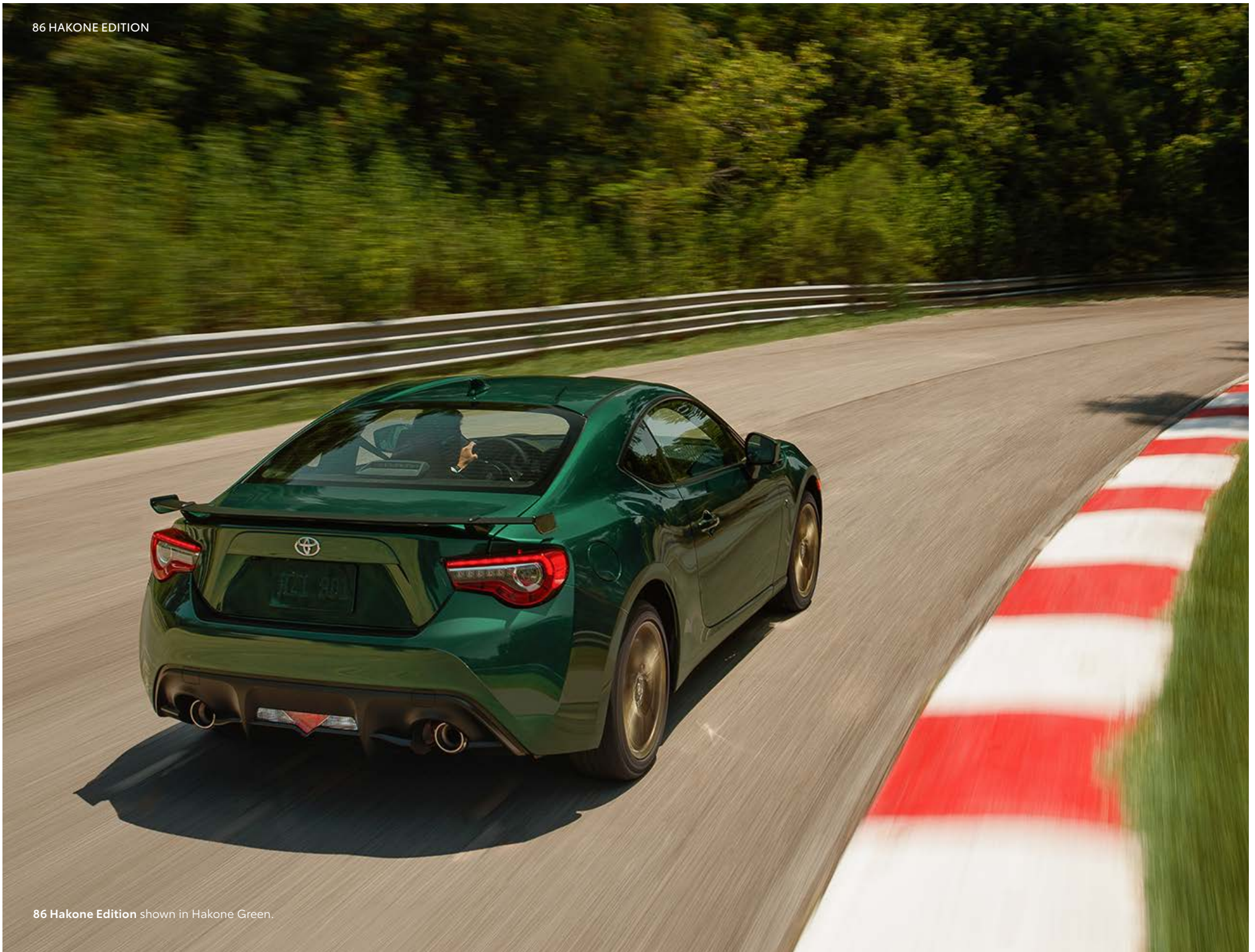
Two hours southwest of Tokyo lies one of the great driving roads in the world, the Hakone Turnpike. Finished in exclusive Hakone Green with 17-in. bronze-colored twisted-spoke alloy wheels,² 86 Hakone Edition is our love letter to this legendary Japanese road. Under the hood, 86 Hakone Edition is identical to the dynamic 86 GT. This special-edition Japanese sports car wasn't designed to collect dust in the garage; it was designed to hug corners.



86 Hakone Edition shown in Hakone Green.

See numbered footnotes in Disclosures section.

86 HAKONE EDITION



86 Hakone Edition shown in Hakone Green.

Legendary style.

Inside, 86 Hakone Edition's black and tan sliding center armrest, Black Alcantara^{®9} inserts, and contrast stitching show that no inch of the interior was overlooked. Heated sport front bucket seats with Tan leather-trimmed bolsters help you feel comfortable behind the wheel. It also comes with accessories that make the ownership experience unlike any other, like a custom debossed "86" tan key glove and owner's folio. Adding to its exclusivity is a deep-pile trunk mat with tan "86" embossing and contrast stitching. And with its leather-wrapped parking brake and gear shift with tan contrast stitching, setting the parking brake will feel like the perfect sign-off to a great drive.



EXCLUSIVE HAKONE GREEN

Finished in our exclusive Hakone Green, 86 Hakone Edition pays tribute to the lush green hills of the legendary Hakone Turnpike in Japan.



17-IN. BRONZE-COLORED ALLOY WHEELS²

17-in. bronze-colored twisted-spoke alloy wheels effortlessly and elegantly complement the exclusive Hakone Green finish.



SPORT SEATS

Behind the wheel, heated seats and Tan leather-trimmed bolsters make the cockpit a comfortable and commanding space.

EXTERIOR DESIGN



86 GT shown in Neptune with available TRD Handling Package. Vehicle shown using visual effects. Production model/options may vary.

Form inspired by function.

Long hood. Short rear deck. The standard in sports car design. With a heritage directly linked to iconic Toyotas like the 2000GT, the 2020 86 brings a stylish new twist to this timeless profile. Its sculpted shape has been expertly crafted to help give this ride a wind-cheating drag coefficient of just 0.29 Cd. The front chin spoiler and integrated canards help keep the front end firmly planted to the ground for sharpened turn-in and response. Available on 86 GT, LED fog lights seamlessly integrate into the refreshed front bumper for even more light. And with the functional rear diffuser, 86 shows off its performance pedigree from every angle.



LED LIGHTING

LED lighting front and rear amplifies the cutting-edge style of 86. Up front, the headlights feature LED Daytime Running Lights (DRL) — a unique light strip that gives 86 a bold, signature look. And in the rear, LED lighting helps take the taillights to a whole new level of cool.



FENDER TRIM

Vortex generators on the fenders help control turbulent airflow, enhancing the stability of 86. These also work to keep the front end planted firmly to the ground, so you can stay connected to the road.



CHROME-TIPPED DUAL EXHAUST

When you got it, flaunt it. 86 shows off its performance cred with a chrome-tipped dual exhaust. This cat-back exhaust system is constructed from high-grade stainless steel and features mandrel bends for smoother airflow, helping elevate performance.

SPORTY INTERIOR



86 GT interior shown in Black Granlux[®] with Red leather trim.

See numbered footnotes in Disclosures section.

Where driver and car become one.

Go ahead: Take the long way. The cabin of 86 brings plenty of comfort to every journey. Granlux^{®8} trim wraps accents on the dashboard, door panels and upper-seat bolsters to bring a sense of sophistication. Aluminum sport pedals and sport gauges with a large center tach further drive home 86's commitment to performance. It all makes for a cabin that better connects you to your drive.



STEERING WHEEL WITH AUDIO CONTROLS

The ergonomic, leather-wrapped steering wheel feels great in your hands and, with its smaller diameter and quick-ratio steering, feels amazing in the corners. Integrated audio controls give you easier access to your music, so you can stay in control of it all.



SPORT SEATS WITH RED-CONTRAST ACCENT STITCHING

Deeply bolstered front seats help hold you in place when the roads get twisty. Granlux^{®8} trim on the upper-seat bolsters provides extra grip and an added sense of comfort and luxury. And stunning red-contrast accent stitching further enhances the premium feel.



FOLDING REAR SEAT

Folding down the rear seat opens up a large total cargo area,²⁶ helping you carry an extra set of wheels and tires for those race-day excursions.



86 GT interior shown in Black Granlux[®] with Red leather trim and Android Auto[™] compatibility. Trademarks shown are those of their respective owners.

Screen depiction accurate as of fall 2019. See numbered footnotes in Disclosures section.

Up to speed with the latest tech.

Inside, 86's technology acts as your sidekick. Its stunning 7-in. multimedia display comes standard with Android Auto™¹⁵ compatibility and Apple CarPlay®¹⁶ compatibility. You can get directions, have your messages read aloud to you and text back by voice, all while keeping your hands on the wheel. Other standard tech includes Bluetooth®¹⁴ connectivity and an auto-dimming rearview mirror with integrated backup camera.⁵



8 SPEAKERS WITH CLARI-FI™¹²

Just like the engineering under the hood, 86's speaker system is engineered to amplify every drive. Cleaner, crisper and more dynamic, 86's eight speakers with Clari-Fi™ deliver an enhanced sound quality that hits every high note.



SMART KEY SYSTEM⁶ WITH PUSH BUTTON START

With 86's available Smart Key System, you can unlock the driver and passenger doors and trunk all while the key fob sits in your pocket or bag. And you can start the engine with just the push of a button.



USB MEDIA AND CHARGING PORT¹³

Plug it in. Charge it up. Get into it. Using the USB media port, you can charge your device and play your favorite tracks on 86's audio system.



Born on the track. Bred for the streets.

To be quick, one has to be balanced. Each facet of performance — speed, braking, handling — needs to unite in harmony in order to deliver maximum thrills. And with the 2020 Toyota 86, each aspect was carefully engineered to unite driver, car and road. Smart design and cutting-edge materials help make the body of 86 light and strong, helping overall performance. This design also places the 2.0-liter boxer engine low to the ground, helping position the center of gravity and front/rear weight distribution. It's a platform built for racing, but still civilized on the streets, and it gives you the best of all worlds. The road is calling — let's go.



SPORT-TUNED SUSPENSION

The 2020 86 features a sport-tuned suspension designed to sharpen turn-in and enhance grip over uneven surfaces, enabling you to carve those corners with surgical precision. And when the drive calls for calmer inputs, like when cruising in the city, this suspension is supple enough to let everyone ride in comfort.



BODY-STRENGTH REINFORCEMENT

Intelligent use of high-strength materials, additional spot welds and advanced construction techniques help reinforce the body strength of 86. And with this strength comes improved body rigidity, which helps reduce unwanted noise, harshness and vibration. Better yet, this strength also works as a performance enhancer, giving 86 exceptional acceleration, braking and handling capabilities.



VEHICLE STABILITY CONTROL¹⁷ TRACK MODE

When on a racetrack, Vehicle Stability Control (VSC) Track Mode helps you push the limits of performance. When in Track Mode, this system allows you to approach the handling limits of 86 before the VSC kicks in, after which the system helps center your drive.

Peace of mind for the road ahead.

86 is equipped with lots of standard safety technologies. A standard auto-dimming rearview mirror with integrated backup camera⁵ helps you see what's behind you while backing up. The standard Star Safety System™ brings Vehicle Stability Control (VSC),¹⁷ Traction Control (TRAC), Anti-lock Brake System (ABS), Electronic Brake-force Distribution (EBD), Brake Assist (BA)¹⁸ and Smart Stop Technology® (SST).¹⁹ And six standard airbags²¹ include a driver and front passenger Advanced Airbag System, driver and front passenger seat-mounted side airbags, and front and rear side curtain airbags. Lastly, every new Toyota comes with ToyotaCare,²³ a maintenance plan that covers normal factory scheduled service for 2 years or 25,000 miles, whichever comes first, and 24-hour Roadside Assistance²³ for 2 years, unlimited mileage.



86 GT shown in Neptune with available TRD Handling Package.

See numbered footnotes in Disclosures section.



86

Powertrain

- 2.0L 4-Cylinder Horizontally Opposed Engine
- 205 hp @ 7000 rpm; 156 lb.-ft. of torque @ 6400 rpm (manual)
- 200 hp @ 7000 rpm; 151 lb.-ft. of torque @ 6400 rpm (automatic)
- Short-throw 6-speed close-ratio manual transmission
- 6-speed Electronically Controlled automatic Transmission with intelligence (ECT-i) and Dynamic Rev Management
- Torsen^{®25} limited-slip differential

Exterior Features

- 17-in. twisted-spoke alloy wheels²
- LED projector-beam headlights, Daytime Running Lights (DRL) and rear combination lights with all-LED lighting
- Color-keyed power outside mirrors
- Chrome-tipped dual exhaust
- Front fender-mounted vortex generators

Interior Features

- 86 multimedia audio — 7-in. touch-screen display and 8 speakers with Clari-Fi™¹²
- Android Auto™¹⁵ & Apple CarPlay™¹⁶ compatible
- Knee support cushions for spirited driving
- Sport front bucket seats with Granlux^{®8} suede-like material
- Analog tachometer with programmable rev indicator
- Auto-dimming rearview mirror with integrated backup camera display⁵
- Leather-trimmed tilt/telescopic steering wheel with contrast stitching and audio controls

Package and Options

- TRD Handling Package (M/T only) includes:
 - SACHS^{®4} performance dampers
 - Brembo^{®3} power-assisted ventilated disc brakes
 - Rear “TRD” badge
 - 18-in. split-spoke alloy wheels² with Michelin® Pilot® Sport 4 tires
 - Aerodynamic underbody panel
- All-season tires



86 GT

Adds to or replaces features offered on 86

Powertrain

- 2.0L 4-Cylinder Horizontally Opposed Engine
- 205 hp @ 7000 rpm; 156 lb.-ft. of torque @ 6400 rpm (manual)
- 200 hp @ 7000 rpm; 151 lb.-ft. of torque @ 6400 rpm (automatic)
- Short-throw 6-speed close-ratio manual transmission
- 6-speed Electronically Controlled automatic Transmission with intelligence (ECT-i) and Dynamic Rev Management
- Torsen^{®25} limited-slip differential

Exterior Features

- 18-in. split-spoke alloy wheels² with Michelin® Pilot® Sport 4 tires (M/T only)
- Available 17-in. twisted-spoke alloy wheels²
- LED fog lights
- Color-keyed heated power outside mirrors
- Rear wing in matte black with aerodynamic end plates
- Aerodynamic underbody panel

Interior Features

- 86 multimedia audio — 7-in. touch-screen display and 8 speakers with Clari-Fi™¹²
- Android Auto™¹⁵ & Apple CarPlay™¹⁶ compatible
- Two-stage heated sport front seats with leather bolsters and Granlux^{®8} suede-like inserts with contrast stitching
- 4.2-in. TFT Multi-Information Display (MID) with vehicle performance information
- Smart Key System⁶ with Push Button Start
- Dual zone automatic climate control
- Leather-trimmed tilt/telescopic steering wheel with contrast stitching, audio and MID controls
- Leather-like knee support cushions for spirited driving
- Leather wrapped parking brake handle cover with contrast stitching
- Leather gear shift boot with contrast stitching

Package and Options

- TRD Handling Package (M/T only) includes:
 - SACHS^{®4} performance dampers
 - Brembo^{®3} power-assisted ventilated disc brakes
 - Rear “TRD” badge
- All-season tires
- Black Granlux^{®8} with Red leather trim



86 Hakone Edition

Adds to or replaces features offered on 86 GT

Powertrain

- 2.0L 4-Cylinder Horizontally Opposed Engine
- 205 hp @ 7000 rpm; 156 lb.-ft. of torque @ 6400 rpm (manual)
- 200 hp @ 7000 rpm; 151 lb.-ft. of torque @ 6400 rpm (automatic)
- Short-throw 6-speed close-ratio manual transmission
- 6-speed Electronically Controlled automatic Transmission with intelligence (ECT-i) and Dynamic Rev Management
- Torsen^{®25} limited-slip differential

Exterior Features

- 17-in. bronze-colored twisted-spoke alloy wheels²
- Exclusive Hakone Green paint

Interior Features

- 86 multimedia audio — 7-in. touch-screen display and 8 speakers with Clari-Fi™¹²
- Android Auto™¹⁵ & Apple CarPlay™¹⁶ compatible
- Two-stage heated sport front seats with Black Alcantara^{®9} inserts and Tan leather bolsters with black contrast stitching
- Leather-trimmed tilt/telescopic steering wheel with tan contrast stitching, audio and MID controls
- Leather-wrapped parking brake handle cover with tan contrast stitching
- Leather gear shift boot with tan contrast stitching
- Black and tan sliding center armrest with black contrast stitching
- Two color-coordinated “86” debossed tan key gloves
- “86” debossed tan owner’s folio
- Deep-pile trunk mat with tan “86” embossing and contrast stitched trim

Color



Raven



Oceanic



Neptune



Hakone Green



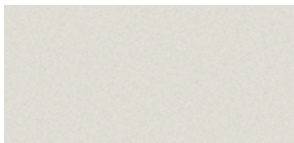
Ablaze



Pavement



Steel



Halo²⁹

Trim



Black fabric with Granlux^{®8} trim



Black Granlux^{®8} with leather trim



Black Granlux^{®8} with Red leather trim



Black Alcantara^{®9} with Tan leather trim

Wheels



17-in. twisted-spoke alloy wheel²



17-in. bronze-colored twisted-spoke alloy wheel²



18-in. split-spoke alloy wheel²

ACCESSORIES

A wide range of Genuine Toyota Accessories is available to help make driving your 86 even more fun. Now your 86 can reflect your personal style. There's something for everyone. Some accessories may not be available in all regions of the country. For a complete list of accessories, go to toyota.com/86.

Alloy wheel locks
All-weather floor mats¹⁰
Cargo tote²⁶
Carpet trunk mat
Center armrest
Coin holder/ashtray cup

Emergency assistance kit
First aid kit
LED fog lights
Mudguards
Paint protection film³⁰
Rear bumper appliqué

Rear lip spoiler
TRD 17-in. forged wheel² — matte gray
TRD 18-in. black alloy wheel²
TRD air intake system
TRD brake pads
TRD lowering springs

TRD performance dual exhaust
TRD quick shifter
TRD sway bar kit
TRD sway bars
Universal tablet holder²⁷



TRD air intake system



TRD performance dual exhaust



TRD lowering springs



TRD sway bars



TRD 18-in. black alloy wheel²



TRD quick shifter



Rear lip spoiler



All-weather floor mats¹⁰

WARRANTIES

Every Toyota Car, Truck and SUV is built to exceptional standards. And that's not idle boasting. We back it up with these Limited Warranty Coverages:

Basic: 36 months/36,000 miles (all components other than normal wear and maintenance items).

Powertrain: 60 months/60,000 miles (engine, transmission/transaxle, drive system, seatbelts and airbags).

Rust-Through: 60 months/unlimited miles (corrosion perforation of sheet metal).

Emissions: Coverages vary under Federal and California regulations. Refer to applicable *Warranty and Maintenance Guide* for details.

Accessories: For Genuine Toyota Accessories purchased at the time of the new vehicle purchase, the Toyota Accessory Warranty coverage is in effect for 36 months/36,000 miles from the vehicle's in-service date, which is the same coverage as the Toyota New Vehicle Limited Warranty.

For Genuine Toyota Accessories purchased after the new vehicle purchase the coverage is 12 months, regardless of mileage, from the date the accessory was installed on the vehicle, or the remainder of any applicable new vehicle warranty, whichever provides greater coverage.

You may be eligible for transportation assistance if it's necessary that your vehicle be kept overnight for repairs covered under warranty. Please see your authorized Toyota dealership for further details.

For complete details about Toyota's warranties, please visit www.toyota.com, refer to the applicable *Warranty and Maintenance Guide* or see your Toyota dealer.


FEATURES¹

	86	86 GT	86 Hakone Edition		86	86 GT	86 Hakone Edition
EXTERIOR							
17-in. twisted-spoke alloy wheels ²	S	O	–	Variable intermittent windshield wipers	S	S	S
17-in. bronze-colored twisted-spoke alloy wheels ²	–	–	S	“86” front fender badge	S	S	S
18-in. split-spoke alloy wheels ² with Michelin® Pilot® Sport 4 tires	O	S	–	Front fender-mounted vortex generators	S	S	S
Rear wing in matte black with color-keyed aerodynamic end plates	–	S	S	Rear window defogger	S	S	S
LED hi/lo projector beam headlights and turn signal indicators with embossed “86” lens	S	S	S	Dual chrome-tipped exhaust	S	S	S
LED Daytime Running Lights (DRL)	S	S	S	Color-keyed roof-mounted shark-fin antenna	S	S	S
LED fog lights	–	S	S	Aerodynamic underbody panel	O	S	S
LED rear combination lights (brake and turn signal indicators)	S	S	S	Rear “TRD” badge	O	O	–
Color-keyed power outside mirrors	S	–	–	Brembo® ³ brakes and SACHS® ⁴ performance dampers	O	O	–
Color-keyed heated power outside mirrors	–	S	S				
INTERIOR							
Auto-dimming rearview mirror with integrated backup camera ⁵ display	S	S	S	Leather trimmed tilt/telescopic steering wheel with tan contrast stitching, “86” center cap logo, audio and MID controls, and paddle shifters (automatic transmission)	–	–	S
Air conditioning with filter	S	–	–	Leather-wrapped parking brake handle cover with contrast stitching	–	S	–
Dual zone automatic climate control (individual temperature settings for the driver and front passenger) with interior filter	–	S	S	Leather-wrapped parking brake handle cover with tan contrast stitching	–	–	S
Power windows with driver and front passenger auto up/down and jam protection	S	S	S	Leather gearshift boot with contrast stitching	–	S	–
Power door locks	S	S	S	Leather gearshift boot with tan contrast stitching	–	–	S
Multi-function in-key remote keyless entry system with lock, unlock, panic and trunk-release functions	S	–	–	Sport front bucket seats with black shoulder pads	S	–	–
Smart Key System ⁶ on driver and passenger doors with Push Button Start, remote keyless entry system with lock, two-stage unlock, panic and trunk release functions	–	S	S	Two-stage heated sport front seats with leather bolsters and Granlux® suede-like inserts with contrast stitching	–	S	–
Anti-theft system with engine immobilizer ⁷	S	–	–	Two-stage heated sport front seats with Black Alcantara® ⁹ inserts and Tan leather bolsters with black contrast stitching	–	–	S
Anti-theft system with alarm and engine immobilizer ⁷	–	S	S	Height-adjustable driver’s seat	S	S	S
Multi-Information Display (MID)	S	–	–	Knee support cushions for spirited driving	S	–	–
4.2-in. TFT Multi-Information Display (MID) with “86” logo on start-up and the following vehicle data: odometer, twin tripmeters, outside ambient temperature, engine coolant/oil temperatures, voltmeter, average trip speed, driving time and miles covered, stopwatch/lap timer, current/average fuel consumption, rpm and hp/torque curves, instantaneous and historical G-force friction circle with digital readout	–	S	S	Leather-like knee support cushions for spirited driving	–	S	S
Digital clock	S	S	S	Granlux® suede-like material accents on door panels, armrest and instrument panel surround, including an “86” logo embroidered on passenger-side instrument panel fascia	S	–	–
Dual analog and digital speedometer	S	S	S	Granlux® suede-like material accents on door panels and instrument panel surround	–	S	S
Analog tachometer with programmable rev indicator, visual and audible	S	S	S	Granlux® suede-like material covering the top of the instrument cluster hood, contrast stitching throughout the interior, and stitched “86” logo on passenger-side instrument panel fascia	–	S	–
Tripmeter	S	S	S	Granlux® suede-like material covering the top of the instrument cluster hood, black stitching and tan stitched “86” logo embroidered on passenger-side instrument panel fascia	–	–	S
Cruise control	S	S	S	One-piece folding rear seatback	S	S	–
Leather-trimmed tilt/telescopic steering wheel with contrast stitching, “86” center cap logo, and audio controls (manual transmission)	S	–	–	One-piece folding rear seatback with Alcantara® ⁹ inserts	–	–	S
Leather-trimmed tilt/telescopic steering wheel with contrast stitching, “86” center cap logo, audio controls and paddle shifters (automatic transmission)	S	–	–	Dual sun visors with vanity mirrors	S	S	S
Leather-trimmed tilt/telescopic steering wheel with contrast stitching, “86” center cap logo, audio and MID controls (manual transmission)	–	S	–	Four-piece carpeted floor mats ¹⁰	S	S	S
Leather-trimmed tilt/telescopic steering wheel with contrast stitching, “86” center cap logo, audio and MID controls, and paddle shifters (automatic transmission)	–	S	–	Center console with 12V ¹¹ outlet, sliding dual cup holder and storage area	S	S	S
Leather-trimmed tilt/telescopic steering wheel with tan contrast stitching, “86” center cap logo, audio and MID controls (manual transmission)	–	–	S	86 Multimedia Audio — 7-in. touch-screen display, 8 speakers with Clari-Fi™ ¹² USB media and charging port, ³ hands-free phone capability and music streaming ¹⁴ via Bluetooth® ¹⁴ wireless technology with steering wheel audio controls, Android Auto™ ¹⁵ & Apple CarPlay® ¹⁶ compatible	S	S	S
				USB charge port cover with USB icon	S	S	S

See numbered footnotes in Disclosures section.

S = Standard O = Optional – = Not Available

FEATURES¹ (continued)

SAFETY AND CONVENIENCE	86	86 GT	86 Hakone Edition	86	86 GT	86 Hakone Edition
 Star Safety System™ — includes Vehicle Stability Control (VSC) ¹⁷ , Traction Control (TRAC), Anti-lock Brake System (ABS), Electronic Brake-force Distribution (EBD), Brake Assist (BA) ¹⁸ and Smart Stop Technology® (SST) ¹⁹	S	S	S	S	S	S
Vehicle Stability Control (VSC) ¹⁷ Track Mode	S	S	S	S	S	S
Hill Start Assist Control (HAC) ²⁰	S	S	S	S	S	S
Six airbags ²¹ — includes driver and front passenger Advanced Airbag System, driver and front passenger outboard seat-mounted side airbags, and front and rear side curtain airbags	S	S	S	S	S	S
PACKAGES AND OPTIONS						
TRD Handling Package — includes SACHS ^{®4} performance dampers, Brembo ^{®3} power-assisted ventilated disc brakes, rear “TRD” badge, 18-in. split-spoke alloy wheels ² with Michelin® Pilot® Sport 4 tires, and aerodynamic underbody panel	O	–	–	–	O	–
				O	O	–
				S = Standard O = Optional – = Not Available		

SPECIFICATIONS

MECHANICAL/PERFORMANCE	86	86 GT	86 Hakone Edition
ENGINE			
Displacement	1988 cc	1988 cc	1988 cc
2.0-Liter 4-Cylinder Horizontally Opposed Engine with DOHC 16-Valve Cylinder Heads and Dual Variable Valve Timing; 205 hp @ 7000 rpm (SAE Net); 156 lb.-ft. of torque @ 6400-6600 rpm (manual transmission)	Standard	Standard	Standard
2.0-Liter 4-Cylinder Horizontally Opposed Engine with DOHC 16-Valve Cylinder Heads and Dual Variable Valve Timing; 200 hp @ 7000 rpm (SAE Net); 151 lb.-ft. of torque @ 6400-6600 rpm (automatic transmission)	Standard	Standard	Standard
Direct Ignition System	Standard	Standard	Standard
Bore x stroke, mm. (in.)	86.0 x 86.0 (3.39 x 3.39)	86.0 x 86.0 (3.39 x 3.39)	86.0 x 86.0 (3.39 x 3.39)
Compression ratio	12.5 : 1	12.5 : 1	12.5 : 1
Fuel octane rating ²⁴	Premium unleaded fuel recommended	Premium unleaded fuel recommended	Premium unleaded fuel recommended
Engine oil type, grade and weight	Toyota Genuine Motor Oil, SAE 0W-20, ILSAC GF-5 engine oil	Toyota Genuine Motor Oil, SAE 0W-20, ILSAC GF-5 engine oil	Toyota Genuine Motor Oil, SAE 0W-20, ILSAC GF-5 engine oil
Engine oil capacity	5.7 US qt.	5.7 US qt.	5.7 US qt.
TRANSMISSION			
6-speed close-ratio manual transmission	Standard	Standard	Standard
Short-throw 6-speed close-ratio manual transmission with triple-cone synchromesh on 1st/2nd/3rd gears, ball-bearing mounted shift linkage, and Reverse gear lockout protection	Standard	Standard	Standard
6-speed Electronically Controlled automatic Transmission with intelligence (ECT-i)	Available	Available	Available
6-speed Electronically Controlled automatic Transmission with intelligence (ECT-i), sequential shift mode with Dynamic Rev Management and paddle shifters, Vehicle Stability Control ¹⁷ Track Mode, Sport Mode, Snow Mode, and an automatic transmission fluid heat exchanger	Available	Available	Available
GEAR RATIO			
Type: 6-speed manual			
1st gear: 3.626, 2nd gear: 2.188, 3rd gear: 1.541, 4th gear: 1.213, 5th gear: 1.000, 6th gear: 0.767, Reverse: 3.437	Standard	Standard	Standard
Type: 6-speed automatic			
1st gear: 3.538, 2nd gear: 2.060, 3rd gear: 1.404, 4th gear: 1.000, 5th gear: 0.713, 6th gear: 0.582, Reverse: 3.168	Standard	Standard	Standard
FUEL INJECTION SYSTEM			
Toyota D-4S Dual Injection System (Direct and Sequential Port Injection)	Standard	Standard	Standard

See numbered footnotes in Disclosures section.

SPECIFICATIONS (continued)

DRIVETRAIN	86	86 GT	86 Hakone Edition
Front engine, Rear-Wheel Drive (RWD)	Standard	Standard	Standard
Torsen ^{®25} limited-slip differential (LSD)	Standard	Standard	Standard
AXEL RATIO			
4.30 — manual transmission	Standard	Standard	Standard
4.10 — automatic transmission	Standard	Standard	Standard
BODY CONSTRUCTION			
Reinforced unibody construction with lightweight, low center of gravity design	Standard	Standard	Standard
Coefficient of drag (Cd)	0.29	0.27	0.27
SUSPENSION			
Sport-tuned independent MacPherson strut front suspension with strut tower bars and sport-tuned independent multi-link rear suspension	Standard	Standard	Standard
Solid front and rear stabilizer bars	Standard	Standard	Standard
Stabilizer bar diameter, front/rear (mm.)	18.0/15.0	18.0/15.0	18.0/15.0
SACHS ^{®4} performance dampers	Available	Available	Not available
STEERING			
Sport-calibrated Electric Power Steering (EPS); power-assisted rack-and-pinion	Standard	Standard	Standard
Steering gear ratio	13.1	13.1	13.1
Steering wheel turns (lock-to-lock)	2.48	2.48	2.48
Turning diameter — curb to curb (ft.)	36.1	36.1	36.1
BRAKES			
Center hand brake	Standard	Standard	Standard
Power-assisted ventilated 11.58-in. front disc brakes; ventilated 11.42-in. rear disc brakes	Standard	Standard	Standard
Front rotor size, diameter x thickness, mm. (in.)	294.0 x 24.0 (11.58 x 0.95)	294.0 x 24.0 (11.58 x 0.95)	294.0 x 24.0 (11.58 x 0.95)
Rear rotor size, diameter x thickness, mm. (in.)	290.0 x 18.0 (11.42 x 0.71)	290.0 x 18.0 (11.42 x 0.71)	290.0 x 18.0 (11.42 x 0.71)
Brembo ^{®3} power-assisted ventilated 12.83-in. front disc brakes; ventilated 12.44-in. rear disc brakes	Available	Available	Not available
DIMENSIONS			
EXTERIOR			
Length (in.)	166.7	166.7	166.7
Width (in.)	69.9	69.9	69.9
Height (in.)	52	52	52
Ground clearance (in.)	4.9	4.9	4.9
Wheelbase (in.)	101.2	101.2	101.2
Tread (front/rear) (in.)	59.8/60.6	59.8/60.6	59.8/60.6
Wheel diameter x width (in.), bolt pattern (mm.), inset/offset (mm.)	17 x 7 in. alloys, 5 x 100 mm. bolt pattern, + 48 mm. inset	18 x 7.5 in. alloys, 5 x 100 mm. bolt pattern, + 48 mm. inset	17 x 7.0 in. bronze-colored alloys, 5 x 100 mm. bolt pattern, + 48 mm. inset
Available wheel diameter x width (in.), bolt pattern (mm.), inset/offset (mm.)	18 x 7.5 in. alloys, 5 x 100 mm. bolt pattern, + 48 mm. inset	17 x 7 in. alloys, 5 x 100 mm. bolt pattern, + 48 mm. inset	Not available
INTERIOR			
Head room — front/rear (in.)	37.1/35.0	37.1/35.0	37.1/35.0
Shoulder room — front/rear (in.)	54.5/51.7	54.5/51.7	54.5/51.7
Leg room — front/rear (in.)	41.9/29.9	41.9/29.9	41.9/29.9
Hip room — front/rear (in.)	53.1/45.3	53.1/45.3	53.1/45.3

SPECIFICATIONS (continued)

WEIGHTS AND CAPACITIES	86	86 GT	86 Hakone Edition
Power to weight ratio (curb weight lb./hp)			
manual transmission	13.5	13.7	13.7
automatic transmission	14.1	14.2	14.2
Curb weight (lb.)			
manual transmission	2776	2817	2799
automatic transmission	2817	2835	2841
Gross Vehicle Weight Rating GVWR (lb.)			
manual transmission	3682	3682	3682
automatic transmission	3748	3748	3748
Seating capacity	4	4	4
Passenger volume (cu. ft.)	76.5	76.5	76.5
Cargo volume (rear seats up) (cu. ft.) ²⁶	6.9	6.9	6.9
Fuel capacity (gal.)	13.2	13.2	13.2
Transmission fluid type, weight (capacity)	Toyota Genuine Gear Oil, SAE 75W-90, API GL-3 (2.3 US qt.)	Toyota Genuine Gear Oil, SAE 75W-90, API GL-3 (2.3 US qt.)	Toyota Genuine Gear Oil, SAE 75W-90, API GL-3 (2.3 US qt.)
Differential fluid type, weight (capacity)	Toyota Genuine Differential Gear Oil LX, SAE 75W-85, API GL-5 (1.22 US qt.)	Toyota Genuine Differential Gear Oil LX, SAE 75W-85, API GL-5 (1.22 US qt.)	Toyota Genuine Differential Gear Oil LX, SAE 75W-90, API GL-3 (2.3 US qt.)
TIRES			
Type	(Summer) ² 215/45R17 87W	(Summer) ² 215/40R18 85Y	(Summer) ² 215/45R17 87W
Optional type	(Summer) ² 215/40R18 85Y (All-season) 215/45R17 87W	(Summer) ² 215/45R17 87W (All-season) 215/45R17 87W	Not available
Spare	Temporary	Temporary	Temporary
MILEAGE ESTIMATES (mpg city/highway/combined)²⁸			
Manual transmission	21/28/24	21/28/24	21/28/24
Automatic transmission	24/32/27	24/32/27	24/32/27

CARS BUILT FOR THE WAY YOU LIVE

At Toyota, we build cars for how you live. From building advanced safety features designed to help prevent crashes to driving cross-country to understand how we can make your driving experience better, our work starts with understanding your needs. Building cars for how you live also means thinking about tomorrow — from fuel efficiency and environmental innovations, to things beyond cars, like a bicycle that you can control with your mind. And because what we learn building cars can help improve lives in other places, we do things like help communities rebuild their homes quickly after a disaster and work with soup kitchens to help them serve more people faster. Toyota. Built for how you live. Together we are going places.

DISCLOSURES

1. Toyota strives to build vehicles to match customer interest and thus they typically are built with popular options and option packages. Not all options/packages are available separately and some may not be available in all regions of the country. See toyota.com for information about options/packages commonly available in your area. If you would prefer a vehicle without any or with different options, contact your dealer to check for current availability or the possibility of placing a special order. Color(s) depicted may vary based on multiple factors, including ambient lighting and the format in which it is being viewed (e.g., computer, mobile device or print).

2. Performance tire life may be substantially less than mileage expectancy, depending on driving conditions. 3. Brembo® is a registered trademark of Freni Brembo SpA. High-friction brakes may require additional maintenance, be louder and have a shorter life than conventional brakes, depending on driving conditions. See the Warranty and Services Guide for more information. 4. SACHS® is a registered trademark of ZF Friedrichshafen AG. 5. The backup camera does not provide a comprehensive view of the rear area of the vehicle and you should also look around the vehicle, using mirrors to confirm rearward clearance. Environmental conditions may limit effectiveness and view may become obscured. See *Owner's Manual* for additional limitations and details. 6. The Smart Key System may interfere with some pacemakers or cardiac defibrillators. If you have one of these medical devices, please talk to your doctor to see if you should deactivate this system. 7. The engine immobilizer is a state-of-the-art anti-theft system that is initiated when you insert your key into the ignition switch or bring a Smart Key fob into the vehicle. The engine will only start if the code in the transponder chip inside the key/fob matches the code in the vehicle's immobilizer. The transponder chip is embedded in the key/fob and can be costly to replace. If you lose a key or fob, your Toyota dealer can help or go to www.aloa.org to find a qualified locksmith in your area who can perform high-security key service. 8. Granlux® is a registered trademark of Oy Granula Ab Ltd. 9. Alcantara® is a registered trademark of Alcantara S.p.A. 10. This floor mat/floor liner was designed specifically for use in your model and model year vehicle and SHOULD NOT be used in any other vehicle. To avoid potential interference with pedal operation, each mat/liner must be secured with its fasteners. Do not install a floor mat/floor liner on top of an existing floor mat/floor liner. 11. Rated for 12 volts. See *Owner's Manual* for additional limitations and details. 12. Clari-Fi® is a registered trademark of Harman International Industries, Inc. 13. May not be compatible with all mobile phones, MP3/WMA players and like models. 14. The Bluetooth® word mark and logos are registered trademarks owned by Bluetooth SIG, Inc., and any use of such marks by Toyota is under license. A compatible Bluetooth® enabled phone must first be paired. Phone performance depends on software, coverage and carrier. 15. Always drive safely and obey traffic laws. Vehicle user interface is a product of Google and its terms and privacy statement apply. To use Android Auto on your car display, you'll need an Android Auto compatible vehicle or aftermarket stereo, an Android phone running Android 5.0 or higher, and the Android Auto app. Google, Android and Android Auto are trademarks of Google LLC. 16. Always drive safely and obey traffic laws. Apps and services are subject to change at any time without notice. Data charges may apply. Apple CarPlay® functionality requires a compatible iPhone® connected with an approved data cable into the USB media port. Apple CarPlay® is a registered trademark of Apple Inc. 17. Vehicle Stability Control is an electronic system designed to help the driver maintain vehicle control under adverse conditions. It is not a substitute for safe and attentive driving practices. Factors including speed, road conditions, weather and driver steering input can all affect whether VSC will be effective in preventing a loss of control. See *Owner's Manual* for additional limitations and details. 18. Brake Assist is designed to help the driver take advantage of ABS and is not a substitute for safe driving practices. Braking effectiveness also depends on proper vehicle maintenance, tire and road conditions. See *Owner's Manual* for additional limitations and details. 19. Smart Stop Technology® operates only in the event of certain contemporaneous brake and accelerator pedal applications. When engaged, the system will reduce power to help the brakes bring the vehicle to a stop. Factors including speed, road conditions and driver input can all impact stopping distance. Smart Stop Technology® is not a substitute for safe and attentive driving and does not guarantee instant stopping. See *Owner's Manual* for additional limitations and details. 20. Hill Start Assist Control is designed to help minimize backward rolling on steep ascents. It is not a substitute for safe driving judgment and practices. Factors including speed, grade, surface conditions and driver input can all affect whether HAC will be effective in preventing a loss of control. See *Owner's Manual* for additional limitations and details. 21. Airbag systems are Supplemental Restraint Systems and are designed to inflate only under certain conditions and in certain types of severe collisions. To decrease the risk of injury from an inflating airbag, always wear seatbelts and sit upright in the middle of the seat as far back as possible. Do not put objects in front of an airbag or around the seatback. Do not use a rearward-facing child seat in any front passenger seat. See *Owner's Manual* for additional limitations and details. 22. The Tire Pressure Monitor System alerts the driver when tire pressure is critically low. For optimal tire wear and performance, tire pressure should be checked regularly with a gauge; do not rely solely on the monitor system. See *Owner's Manual* for additional limitations and details. 23. ToyotaCare covers normal factory scheduled maintenance for two years or 25,000 miles, whichever comes first. Certain models require a different maintenance schedule as described in their Maintenance Guide. 24-hour Roadside Assistance is also included for two years, unlimited mileage. Roadside Assistance does not include parts and fluids, except emergency fuel delivery. See Toyota dealer for details and exclusions. Valid only in the continental U.S. and Alaska. 24. Ratings achieved using the required premium unleaded gasoline with an octane rating of 93 or higher. If premium fuel is not used, performance will decrease. If unleaded gasoline with an octane rating of 93 (98 RON) is not available, unleaded gasoline with an octane rating of 91 (95 RON) may be used with no detriment to engine durability or drivability. 25. Torsen® is a registered trademark of Zexel Torsen, Inc. 26. Cargo and load capacity limited by weight and distribution. Always properly secure cargo and cargo area. 27. The universal tablet holder is intended for passengers only. Drivers should always be sure to obey traffic regulations and maintain awareness of the road and traffic conditions at all times. Use of aftermarket accessories may pose an increased risk of injury to occupants in the event of an accident. Tablet sold separately. 28. 2020 EPA-estimated mileage. Actual mileage will vary. 29. Extra-cost color. 30. Genuine Toyota Paint Protection Film by 3M™ is designed for specific sections of the vehicle most prone to chipping and may vary depending on vehicle model. Select applications may require an additional charge. Toyota Genuine Accessory Warranty only applies when installation is performed by a trained Toyota-approved installer. See Toyota dealer for details.

Toyota strives to build vehicles to match customer interest and thus they typically are built with popular options and option packages. Not all options/packages are available separately and some may not be available in all regions of the country. See toyota.com for information about options/packages commonly available in your area. If you would prefer a vehicle without any or with different options, contact your dealer to check for current availability or the possibility of placing a special order. Color(s) depicted may vary based on multiple factors, including ambient lighting and the format in which it is being viewed (e.g., computer, mobile device or print).

Some vehicles are shown with available equipment. Seatbelts should be worn at all times. For details on vehicle specifications, standard features and available equipment in your area, contact your Toyota dealer. A vehicle with particular equipment may not be available at the dealership. Ask your Toyota dealer to help locate a specifically equipped vehicle.

All information presented herein is based on data available at the time of posting, is subject to change without notice and pertains specifically to mainland U.S.A. vehicles only. Vehicles shown may be prototypes and/or shown with options. Actual models may vary.



For Toyota Mobility program details, go to www.toyota.com/mobility or call the Toyota Customer Assistance Center at 1-800-331-4331

