

# Unical

## SRC



**CONDENSATE COLLECTOR TANK FOR STEAM BOILERS  
IN CARBON STEEL (in stainless steel on request)**

RANGE

from 500 to 16000 liters

WORKING PRESSURE

atmospheric

MODELS

500

1000

1500

2000

2500

3000

4000

5000

6000

8000

10000

16000

## DESCRIPTION

### Feed water tank

Reservoir of feeding water for steam boiler, predisposed for the collection and the storage of the condensate, and for the eventual refill of treated water.

Execution in horizontal cylindrical shape, with convex end-plates. It is mounted on a stable steel support device and designed for installing either at ground level or at higher level to avoid the cavitation phenomenon.

Complete with an electronic water level management system and related alarms (low and high levels).

The mix of the condensate return and the chemically treated water is automatic.

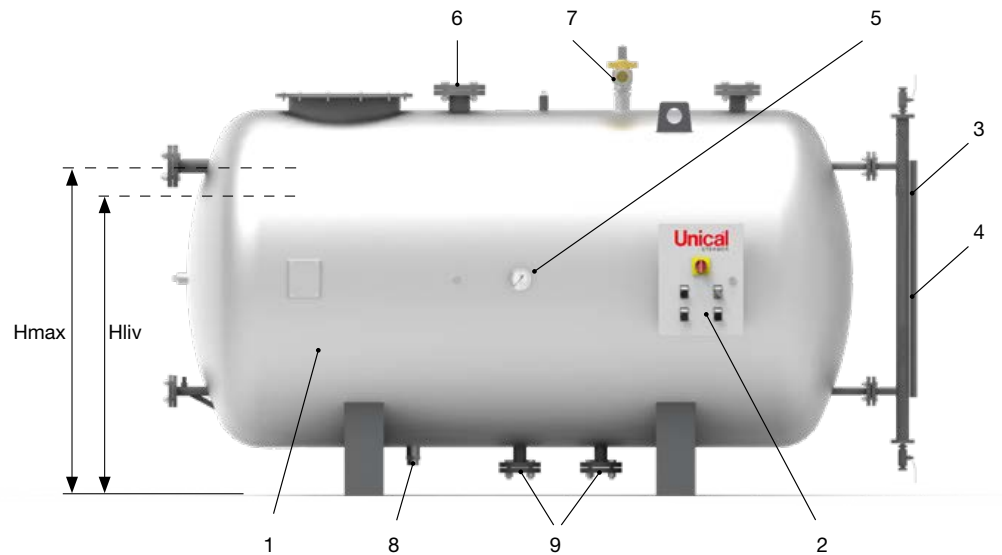
Insulated with high-density (50 mm) rock wool and covered with embossed aluminum foil.

### Standard-production equipment:

- Feed water tank made of steel
- Magnetic level indicator
- Probes for water level control
- Inlet water line with pneumatic valve
- n. 2 connections for water flow (n. 1 for mod. 500)
- Air vent
- Overflow
- Drain valve
- Thermometer
- Electric panel board IP55.

## MAIN COMPONENTS

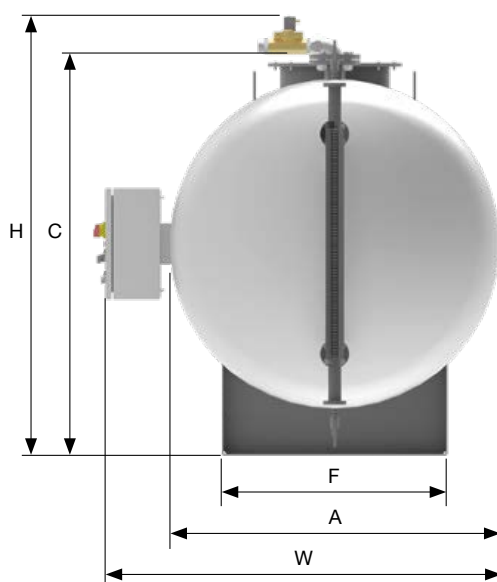
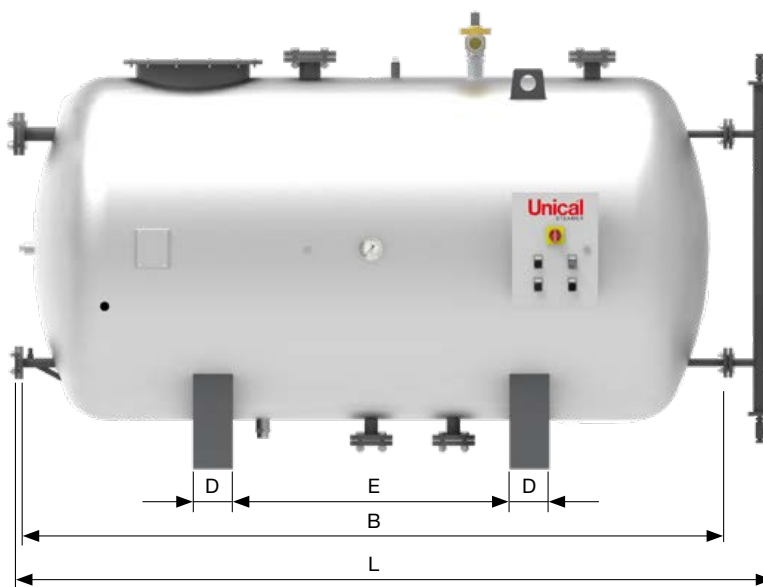
1. Degassing tank
2. Electric panel board
3. Level indicator
4. Level regulation sensors
5. Thermometer
6. Condensates return
7. Reinstatement water inlet
8. Drain
9. Hot water flow connections



## TECHNICAL DATA

Model	Water content at level	Total volume	Hliv	Hmax
	l	l	mm	mm
500	375	500	684	764
1000	750	1000	842	936
1500	1125	1500	918	988
2000	1500	2000	1105	1235
2500	1875	2500	1105	1235
3000	2250	3000	1180	1302
4000	3000	4000	1330	1459
5000	3750	5000	1330	1459
6000	4500	6000	1330	1459
8000	6000	8000	1480	1650
10000	7500	10000	1756	1951
16000	12000	16000	1760	1951

DIMENSIONS (indicative)



Model	W	L	H	A	B	C	D	E	F	Empty weight
	mm	mm	mm	mm	mm	mm	mm	mm	mm	kg
500	1050	2020	1203	750	1870	953	120	950	470	330
1000	1250	2166	1404	950	2016	1154	120	810	611	460
1500	1350	2750	1505	1050	2600	1255	120	1310	682	515
2000	1600	2330	1755	1300	2180	1505	140	770	859	560
2500	1600	2830	1755	1300	2680	1505	140	1270	859	665
3000	1700	2920	1855	1400	2770	1605	140	1270	929	765
4000	1900	2900	1955	1600	2750	1705	160	1130	1071	950
5000	1900	3450	2005	1600	3300	1705	160	1680	1071	1060
6000	1900	4000	2135	1600	3850	1835	160	2230	1071	1180
8000	2100	4058	2365	1800	3908	2015	160	2030	1212	1330
10000	2400	4192	2726	2100	4042	2376	180	1990	1424	1740
16000	2400	5710	3040	2100	5560	2690	200	3500	1424	2430

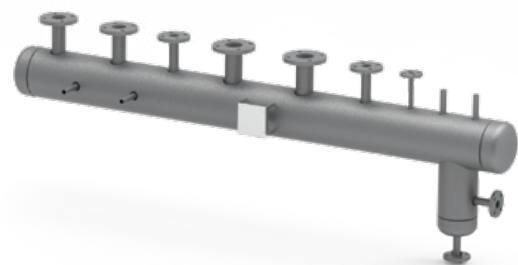
The company reserves the right to modify / adapt the technical and dimensional information of the products included in this catalog, even without notice, in order to improve the quality of the products themselves.

## ELECTRIC PANEL BOARD



- ON/OFF regulation of water level in the reservoir
- Nr. 1 low level signalling
- Nr. 1 high level signalling
- Electrical protection degree IP55

## SUPPORTS AND MANIFOLDS (optional)



### SUPPORTS

for tanks (type SRC) and degassers (type DEAR, DETE) designed and built according to EN 1090, equipped with ladder, gangway. Structural calculation report where necessary and required, is available.

### STEAM MANIFOLDS

CE marked according to PED directive 2014/68/EU, sized according to specific plant requirements regarding steam flow rate and pressure, number and diameter of outlets. On request it is possible to supply support saddles, insulation, valves.