




Das Auto.

# The new Touran

Volkswagen Information Service. Telephone 0800 333 666  
Internet: [www.volkswagen.co.uk](http://www.volkswagen.co.uk)  
© Volkswagen Group United Kingdom Limited 2011.  
Issue: 1 March 2011. Printed in UK.  
PVW644TOURAN

# The new Touran





04 THE NEW TOURAN  
18 EXTERIOR AND WHEELS  
22 INTERIOR  
28 SAFETY  
30 BLUEMOTION TECHNOLOGIES  
32 ENGINES, CHASSIS AND GEARBOXES  
34 COMFORT  
36 MULTIMEDIA AND AIR CONDITIONING  
38 PAINT, UPHOLSTERY AND COMBINATIONS  
44 TECHNICAL SPECIFICATION  
48 TECHNOLOGY  
50 VOLKSWAGEN SERVICE

Take a new  
approach to life.

# Everyday life just got a whole lot more interesting.

In the new Touran, each day becomes exciting. Advanced technologies and a luxurious new interior ensure total driving pleasure, while a flexible seating system provides space for up to seven people, and any amount of sports equipment, shopping or luggage. With state of the art safety features ensuring complete peace of mind, your new Touran is an unbeatable companion for everyday life.





An extra  
dimension of  
light and space.

Take a  
refreshing  
new look at life.





Room  
for everything.  
Except routine.

An irresistible  
combination of  
style and practicality.





An adaptable  
interior that's  
ready for anything.

Model shown is new Touran S with optional 5 seat arrangement, panoramic sunroof and metallic paint.



The new Touran.  
Life is a whole lot  
more interesting.



# EXTERIOR AND WHEELS

The new Touran is an extraordinary vehicle, combining style and luxury with the ultimate in practicality and spaciousness, ensuring every journey is an exciting experience. Dynamic bodylines and attention to detail give the exterior its distinctive look, enhanced by a choice of exclusive alloy wheels.



**S SE SP** Bi-Xenon headlights feature automatic range adjustment, dynamic curve lighting and headlight washers to ensure the optimum headlight setting and illumination. Light distribution of the dipped beam is linked to speed, ensuring

a longer beam is emitted at faster speeds for better illumination of the road ahead, while LED daytime running lights make sure your vehicle is more visible during the day. Model shown is new Touran SE.



**S SE SP** The rear design of the new Touran has been remodelled to reflect contemporary styling. The body-coloured bumper and integrated roof spoiler give greater definition to the bodylines, and the gently curving tailgate enhances the exterior dynamics, giving a more refined look. Model shown is new Touran SE.



**S SE SP** The distinctive new radiator grille with chrome-plated louvre inserts adds a sporty, stylish touch, while a high gloss black background sets off the famous Volkswagen logo, giving the front design a characteristic and dynamic new look.



**S SE SP** Two-piece rear lights complete the rear styling, adding a touch of elegance, giving the new Touran its distinctive identity.



**SE SP** The heat insulated tinted glass from the B pillar back reduces the glare of sunlight by up to 65%, ensuring a pleasant interior temperature in the passenger compartment and giving occupants additional privacy.

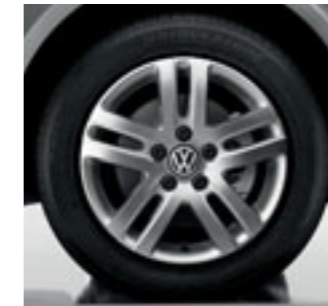


**S SE SP** The electric panoramic sunroof of the new Touran gives an uninterrupted view of the sky above, filling the interior with natural light and providing an extra dimension of light and space. Easily operated and adjusted via the practically located control panel, it also includes a wind deflector, enabling you to

enjoy the sun and fresh air on faster journeys, while tinted glass ensures a pleasant interior temperature even in strong sunlight. Should you wish to stay out of the sun, yet still enjoy fresh air, an integrated roller blind can be used while the sunroof is open. Model shown is new Touran Sport.



**S** 15 inch 'Misano' alloy wheels with 195/65 R15 tyres add a sporty look to the exterior and are protected by anti-theft wheel bolts. S BlueMotion Technology models feature 195/65 R15 low rolling resistance tyres as standard.



**S SE** 16 inch 'Cleveland' alloy wheels with 205/55 R16 tyres add an extra touch of elegance and style and are protected by anti-theft wheel bolts. SE BlueMotion Technology models feature 205/55 R16 low rolling resistance tyres as standard.



**SP** 16 inch 'Sacramento' alloy wheels with 205/55 R16 tyres are a real design classic, giving the exterior styling a sporty look, and are protected by anti-theft wheel bolts. Sport BlueMotion Technology models feature 205/55 R16 low rolling resistance tyres as standard.



**S SE SP** 16 inch 'Perth' alloy wheels with 205/55 R16 tyres give a touch of individuality to your new Touran and are protected by anti-theft wheel bolts. SE BlueMotion Technology and Sport BlueMotion Technology models feature 205/55 R16 low rolling resistance tyres as standard.



**SE SP** 17 inch 'Oakland' alloy wheels with 225/45 R17 tyres are striking and distinctive, and are protected by anti-theft wheel bolts. Not available on BlueMotion Technology models.

5 seat models and 17" 'Oakland' alloy wheels cannot be specified in conjunction with each other.



# INTERIOR

The new Touran's passenger compartment offers an exceptional combination of space, flexibility, luxury and comfort. With numerous seating options and storage compartments, you couldn't ask for a more versatile interior, while top quality materials provide a level of finish that is second to none and the clearly arranged dashboard ensures everything is ready to hand, just where you'd expect it to be.



**S** The new Touran S offers a range of standard equipment that is truly impressive as an entry level model. Contemporary 'Charly' upholstery and matching 'Matt chromium' interior trim is both stylish and comfortable, and refinements such as electronically controlled air conditioning, height adjustable driver and front passenger seats, and the height and reach adjustable three-spoke steering wheel ensure optimum comfort. The multifunction

computer (Midline), RCD 210 radio/MP3 compatible CD player with four speakers, and speed-sensitive, power assisted steering all enhance your driving experience, while a range of practical features includes storage compartments in all doors and the roof console, and 12V sockets in the front and luggage compartment. Interior shown features optional carpet mats.

Standard on S **S** Standard on SE **SE** Standard on Sport **SP**



**SE** Refined and elegant, the new Touran SE features stylish 'Miu' upholstery and matching 'Iridium' interior trim, while front comfort seats with height and lumbar adjustment and 65% light absorbing tinted glass from the B pillar back ensure a relaxing journey, especially on long trips. Adding to your comfort are such refinements as a leather trimmed multifunction steering wheel, an RCD 310 radio/MP3 compatible CD player with eight speakers and connectivity to an iPod or MP3 player via an AUX-in socket or Multi Device Interface (MDI), and a multifunction computer

(Highline). Ultrasonic and audible parking sensors front and rear, and an optical parking display on the vehicle's audio system help you park, aided by the sensor-controlled Park Assist steering aid. The SE also features a rain sensor and automatic dimming interior rear-view mirror, and an automatic coming/leaving home lighting function, while practical details include useful storage drawers beneath both front seats, folding tables on the rear of the front seats, and 12V sockets for both the 2nd row of seats and luggage compartment. Interior shown features optional carpet mats.



**SP** In terms of luxury, convenience and sporty good looks, the new **Touran Sport** is hard to beat. High quality Alcantara upholstery on the seat centre sections and 'Microfibre' side bolsters give the interior a stylish and contemporary feel, enhanced by 'Chrome frame' interior trim, and front and rear carpet mats. Front sports seats with height and lumbar adjustment ensure optimum comfort, while 2Zone electronic climate control

with automatic air recirculation enables the driver and front passenger to select their preferred temperature setting. There is also a multifunction computer (Highline) and an RCD 510 touch-screen radio/dash mounted MP3 compatible six CD autochanger fitted as standard, along with front fog lights, which include a static cornering function for greater illumination and safety.

Standard on S **S** Standard on SE **SE** Standard on Sport **SP**



**S SE SP** With just one simple hand movement, the middle seat in the 2nd row transforms into a table for the use of rear passengers. Made of robust plastic and completely level, the table also features a protective rim, which is very useful if any liquids are spilt.

All three seats in the middle row can be easily and separately removed, folded down, adjusted or moved forward or backward, depending on your requirements. Interior shown is new Touran SE with optional carpet mats.



**SE SP** The backrest of the height adjustable front passenger seat folds completely flat, providing a completely level surface that can be used as a table and also extending the load-through facility. Interior shown is new Touran Sport with optional leather\* upholstery.



**S SE SP** Storage compartments in the roof console are easily accessible by both driver and front passenger, providing practical storage space for anything that needs to be within easy reach.



**S SE SP** The seating arrangement in the 3rd row comprises two single seats, which can be folded down separately into the boot floor space to suit your stowage requirements. In total, the new Touran offers more than 500 seat combinations, offering the ultimate in flexibility and providing between 121 and 1,989 litres of

luggage space, depending on your seating arrangement. As a seven-seater, the new Touran has a generous boot space, and whichever configuration you choose, its level boot floor and protective carpet lining provides a durable and robust storage area. Interior shown is new Touran SE.



**SE SP** Convenient drawers beneath the driver's and front passenger's seat provides additional storage space for those essential items you want to keep close to hand.



# SAFETY

The new Touran is nothing short of miraculous when it comes to space, but in terms of safety there is no room for compromise. Equipped with the latest intelligent safety features, it provides maximum protection for every occupant, enabling you to drive safely and at ease, and focus purely on the driving experience.



**S SE SP** In the 2nd row, all three single seats are equipped with head restraints and three-point automatic seat belts, and the outer seats are fitted with height adjustable seat belts.



**S SE SP** Up to two child seats can be fitted easily and safely to the outer seats in the 2nd row, using the Isofix fixings attached directly to the vehicle chassis.



**S SE SP** The standard airbag system consists of driver's and front passenger's airbags with passenger's airbag deactivation switch, curtain airbags for front and 2nd row passengers, and front seat side impact airbags. Together with seat belts, airbags reduce the risk of serious head and chest injuries: as soon as the crash sensors register a collision, a gas generator fills the airbags within 30 to 40 milliseconds. The activated airbags then cushion the head and upper part of the body, distributing the impact of the collision over as wide an area as possible and ensuring less forward movement of the neck, significantly reducing risk of whiplash and injury.



**S SE SP** The Electronic Stabilisation Programme (ESP) utilises sensors to detect critical situations at an early stage, reacting within milliseconds by controlling the speed of individual wheels, helping to bring the vehicle under control.



**S SE SP** Fastening seat belts before every journey is a vital safety precaution – the seat belt warning buzzer and light for the driver and front passenger ensures you don't forget this necessary measure, even on short journeys.

# BLUEMOTION TECHNOLOGIES

BlueMotion Technologies represent Volkswagen's contribution to sustainable motoring and encompass a range of optimum, energy-efficient solutions for every demand. Friendlier to the environment and your wallet, BlueMotion Technologies enable you to do your bit for the planet without having to forego everyday practicalities and comfort – encouraging you to 'Think Blue'.

In the new Touran BlueMotion Technology, Volkswagen's engineers have strived to produce a vehicle that is cleaner and more efficient, yet still offers great performance and handling. The result is a range of energy-saving technologies that work hand in hand with Volkswagen's advanced engines and gearboxes to produce new levels of efficiency and economy. This includes such features as improved aerodynamics, low rolling resistance tyres and a visual gear change recommendation for optimum fuel consumption on the multifunction computer (Highline). There's also recuperative braking, which stores energy that would otherwise have been lost when you brake, and the clever Start/Stop function, which switches off the engine when your vehicle is stationary and in neutral, then starts it again as you depress the clutch. All combine to increase efficiency and significantly reduce emissions.

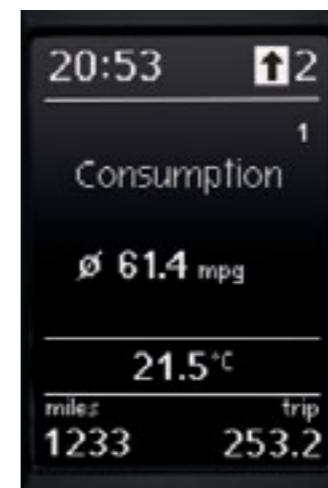
A combination of all these refinements, allied with the latest TSI and TDI engines, delivers a package that offers outstanding economy as well as high performance. The 1.2 litre TSI 105 PS engine is capable of 47.9 mpg over the Combined fuel cycle\* while achieving a top speed of 117 mph, where the law permits. The two diesel variants benefit from the latest common rail technology, resulting in exceptional pulling power throughout the rev range. The 1.6 litre TDI 105 PS engine achieves 61.4 mpg over the Combined fuel cycle\* and just 121 g/km of CO<sub>2</sub>, while the more powerful 2.0 litre TDI 140 PS engine ensures CO<sub>2</sub> emissions of just 127 g/km, whilst still achieving 58.9 mpg over the Combined fuel cycle\*.

Volkswagen's BlueMotion Technology badge identifies the cleanest, most energy-efficient vehicles in our range. Whenever you see this logo, you know you're looking at a vehicle designed to cut emissions and significantly cut the cost of your motoring.

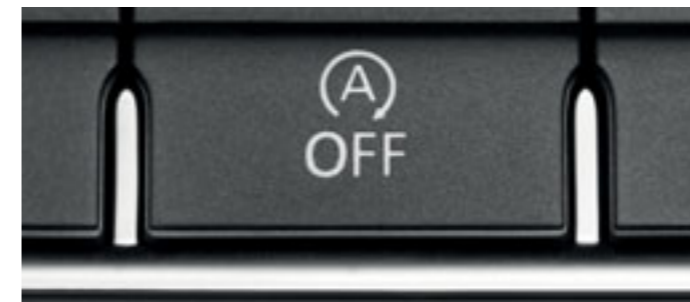
\* Please see pages 44-47 for CO<sub>2</sub> emissions and fuel consumption figures.



The multifunction computer (Highline) in the BlueMotion Technology Touran not only provides invaluable journey information such as journey time, outside temperature and average speed, but also provides a visual gear change recommendation for optimum fuel consumption, ensuring you always drive in the most energy-efficient gear. Standard on all BlueMotion Technology models.



Volkswagen's unique 'BlueMotion Technology' badging on the rear tailgate identifies your vehicle as being one of the most economical models in the Touran series, with a host of energy-saving, environmentally-friendly refinements.



The Start/Stop function turns off your engine when not needed, producing less emissions and greater fuel economy. When waiting at a traffic light or in a traffic jam, simply select neutral gear and release the clutch. The engine will switch off and the Start/Stop symbol will appear on the dashboard. To drive on, simply select first gear and the engine will restart, enabling you to pull away. The system can easily be deactivated by a switch within easy reach.





# ENGINES, CHASSIS AND GEARBOXES



The dual clutch Direct Shift Gearbox (DSG) represents a milestone in the development of the latest gearbox technology. This innovative automatic gearbox shifts smoothly and imperceptibly into the pre-selected next gear within a few hundredths of a second, without disrupting traction.

The new Touran really comes to life when you start the engine. Whether you choose a petrol or diesel variant, the very latest drive technology delivers the ultimate in pulling power, performance and energy efficiency. Which means you can look forward to an exciting drive that's as frugal as it's fun.



**SE** **SP** **Adaptive Chassis Control (ACC)** adapts the damping control and shock absorption rate to the road conditions and driving style you require within milliseconds. At the touch of a button, you decide how firm or comfortable you wish to set the suspension, with a choice of three settings: Sport, Comfort or Normal. In Sport mode, the steering also adapts to a sporty driving style. Not available on BlueMotion Technology models.

Optional on S **S** Optional on SE **SE** Optional on Sport **SP**

Engine technology excels in the new Touran, with a selection of two petrol and four diesel variants delivering exceptional levels of performance and economy. Volkswagen's technologically advanced TSI engines combine excellent driveability with impressive fuel economy. The combination of direct fuel injection and intelligent turbocharging technology allows petrol engines with TSI technology to work particularly efficiently, offering such advantages as high performance, high torque and reduced fuel consumption. TSI technology is available as either a 1.2 litre TSI 105 PS or 1.4 litre TSI 140 PS. BlueMotion Technologies are also available with the 1.2 litre TSI 105 PS engine with a low CO<sub>2</sub> emission figure of 139 g/km.

\* Please see pages 44-47 for CO<sub>2</sub> emissions and fuel consumption figures.



The combination of direct injection and intelligent turbocharging technology ensures petrol engines with TSI technology deliver all the benefits of high torque with low fuel consumption.

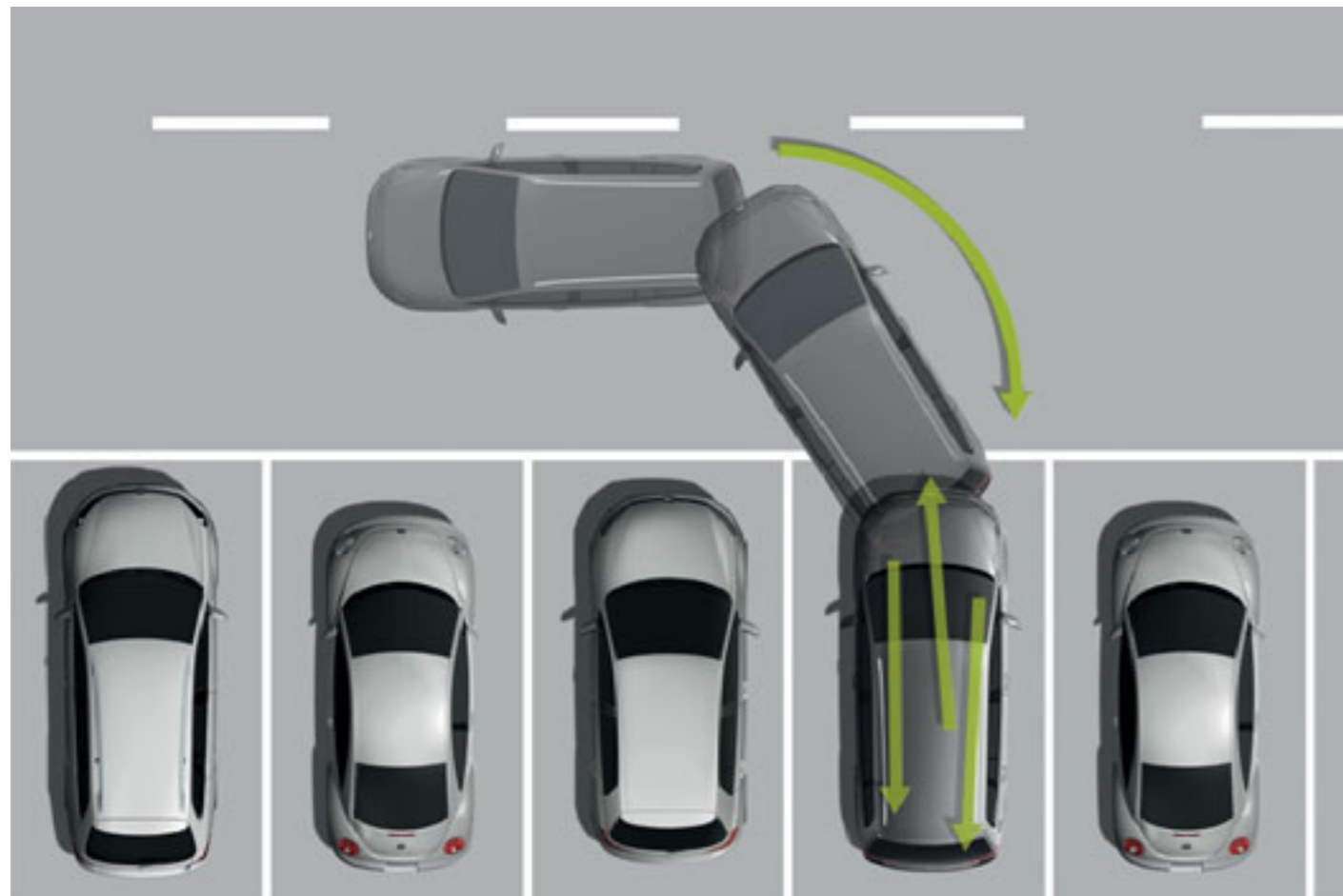
The first diesel engine available for the new Touran is a 1.6 litre TDI 90 PS with a CO<sub>2</sub> emission of 134 g/km. The second, a 1.6 litre TDI 105 PS unit which, when specified with BlueMotion Technology, achieves 61.4 mpg on the Combined fuel cycle\*. Two 2.0 litre TDI units are available with either 140 PS or 170 PS. The 140 PS engine is capable of a top speed of 125 mph where the law permits and when allied with BlueMotion Technology produces an impressive CO<sub>2</sub> emission figure of just 127 g/km. Finally, the powerful 170 PS TDI DSG, which can accelerate the new Touran to 62 mph in just 8.9 seconds on its way to a top speed of 132 mph where the law permits, whilst still achieving 49.6 mpg on the Combined fuel cycle\*.



TDI diesel engines combine high pulling power with low fuel consumption and emission levels. Even with a small capacity engine, the turbocharger ensures high and efficient performance.

# COMFORT

Not only is the new Touran unbelievably spacious, it's also exceptionally comfortable, ensuring every journey is an enjoyable experience, rather than simply a trip from A to B. A range of innovative equipment provides many useful functions, helping to take the stress out of driving and ensuring the well-being of every occupant.



**S SE SP** Making its debut on the new Touran is a **Park Assist** system that not only makes parallel parking significantly easier, but now has the added functionality to help you reverse park into a space at 90 degrees to the kerb. The driver activates the system by pressing a button on the centre console and, using ultrasonic parking sensors, Park Assist will then detect a parking space large enough for either reverse or parallel parking. Once the vehicle is in reverse, all the driver has to do

is operate the accelerator and brake, and keep a good lookout, while the new Touran steers itself into its chosen space. Improvements to the system mean Park Assist can now parallel park in particularly small spaces, that can be less than one metre longer than the vehicle.

Park Assist and parking sensors, front and rear cannot be specified in conjunction with parking sensors, rear. Optical parking display only available with RCD 310 radio system, RCD 510 radio system or RNS 315 navigation/radio system.



**S SE SP** The leather multifunction steering wheel enables you to operate the radio/CD player, optional navigation/radio system and also the optional the Bluetooth telephone preparation with the greatest of ease, without taking your hands off the wheel, and keeping your eyes on the road.

On all S models, only in conjunction with the RCD 310 radio system, RCD 510 radio system or RNS 315 navigation/radio system.



**SE SP** The rear-view camera, located in the tailgate, reproduces an electronically straightened image on the vehicle's audio system display. This provides an unobscured view to the rear of the vehicle, making parking easier and safer, even when towing a trailer.

Only available in conjunction with the RCD 510 radio system or RNS 315 navigation/radio system. Rear-view camera and DAB digital receiver cannot be specified in conjunction with each other.



**S SE SP** Rear parking sensors, are ultrasonic, audible with audio volume reduction when activated and optical parking display via vehicle's audio system.

Park Assist and parking sensors, front and rear cannot be specified in conjunction with parking sensors, rear. Optical parking display only available with RCD 310 radio system, RCD 510 radio system or RNS 315 navigation/radio system.

# AIR CONDITIONING AND MULTIMEDIA

Thanks to a wealth of innovative features, the new Touran is all about relaxation and individuality. The latest air conditioning system enables you and your passengers to select your preferred interior temperature, while audio, navigational and telephone preparation options allow you to create just the level of functionality that best meets your needs.



**S SE SP** **2Zone electronic climate control air conditioning** controls the temperature electronically and divides the interior into two different climate zones, enabling the driver and front passenger to adjust the temperature, air supply and distribution to suit their individual preference. An air quality sensor continually monitors the outside air, automatically activating the interior air recirculation if necessary.



**S SE** The RCD 310 radio/MP3 compatible CD player also features a Multi Device Interface (MDI) and AUX-in socket for connection to an external multimedia source.

RCD 310 radio system, RCD 510 radio system, RNS 315 navigation/radio system or RNS 510 DVD navigation/radio system cannot be specified in conjunction with each other.



**S SE SP** The RCD 510 touch-screen radio/dash mounted MP3 compatible six CD autochanger with eight speakers, feature a large 6½ inch colour display with intuitive menu navigation and touch-screen operation.



**S SE SP** The Bluetooth telephone preparation is a HFP (Hands Free Profile) device. While your phone stays in your pocket, it automatically connects to an external vehicle aerial using Bluetooth wireless technology (remote SIM Access Profile 1.0, rSAP), providing the highest standards of convenience and ease of use. Radio featured is RCD 510 touch-screen radio/dash mounted MP3 compatible six CD autochanger.

Phones must be compatible with HFP (Hands Free Profile), please contact your authorised Volkswagen retailer for phone compatibility. Bluetooth telephone preparation, when not ordered in conjunction with the multifunction steering wheel, is operated via a button in the roof lining above the driver's seat.



**S SE SP** The RNS 315 touch-screen navigation/radio system with MP3 compatible CD player features a 5 inch colour display with clearly arranged map navigation, as well as an SD card reader and practical AUX-in socket for connecting external audio devices, such as an iPod or MP3 player.

RCD 310 radio system, RCD 510 radio system, RNS 315 navigation/radio system or RNS 510 DVD navigation/radio system cannot be specified in conjunction with each other. RNS 315 navigation/radio system and RNS 510 DVD navigation/radio system includes postcode search functionality for all but the last 2 digits of a UK postcode. Note, the DVD playback on RNS 510 DVD navigation/radio system will not function whilst the navigation system is in use, or the vehicle is in motion.



**SE SP** The RNS 510 DVD touch-screen navigation/radio system with integrated voice control and rear-view camera responds to spoken voice commands for navigation, CD and radio functions. With a 6½ inch colour screen, 30 GB hard drive, SD card reader, MP3, WMA and DVD video data files compatibility, AUX-in socket and Multi Device Interface (MDI) for connection to an external multimedia source, for example an iPod or MP3 player.

Rear-view camera and DAB digital receiver cannot be specified in conjunction with each other.



**NON-METALLIC**

**S** Candy White · Non-Metallic · B4



**S** Indian Blue · Non-Metallic · F3



**O** Wild Cherry Red · Metallic · 2K

**METALLIC**



**O** Acapulco Blue · Metallic · 2W



**O** Java · Metallic · 4Q



**O** Silver Leaf · Metallic · 7B



**O** Reflex Silver · Metallic · 8E



**O** Nimbus Grey · Metallic · U5



**O** Slate Grey · Metallic · X9



**O** Night Blue · Metallic · Z2

# PAINT

Before we even think about the paint finish, we treat the bodyshell with our multi-coat rust protection process. We galvanise it to guard against corrosion, add further protection to the underbody and finally apply a flawless base coat – only then, are we ready to apply one of our range of gorgeous colours.



# PEARL EFFECT



**O** Deep Black · Pearl Effect · 2T



**O** Venetian Green · Pearl Effect · E5

Standard **S** Optional at extra cost **O**

Please note: The print processes do not allow exact reproduction of the paint colours.

Whichever upholstery you choose, there are two things that all seat coverings have in common: the high-quality materials and uncompromising good workmanship. This can be seen, for example, in the very densely woven fabrics which are so reliably protected from wear and tear, thus offering extended durability.

# UPHOLSTERY



Anthracite · 'Charly' cloth · YV  
 S, S BlueMotion Technology

## 'CHARLY'



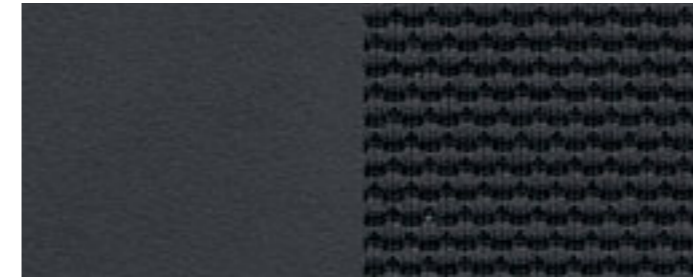
Anthracite · 'Miu' cloth · YV  
 SE, SE BlueMotion Technology



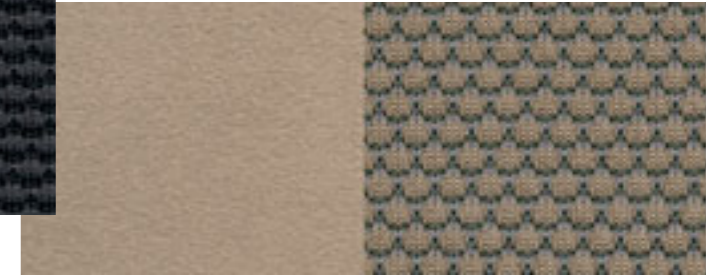
Desert Beige · 'Miu' cloth · PQ  
 SE, SE BlueMotion Technology

## 'MIU'

## 'ALCANTARA'



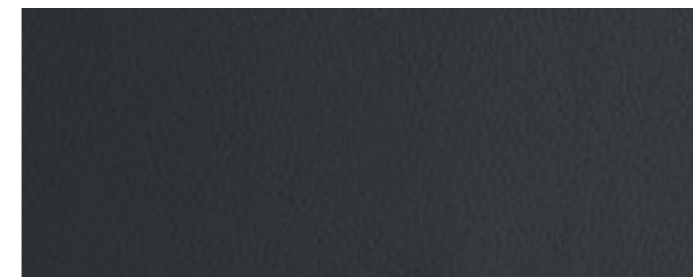
Anthracite · 'Alcantara' · YV  
 Sport, Sport BlueMotion Technology



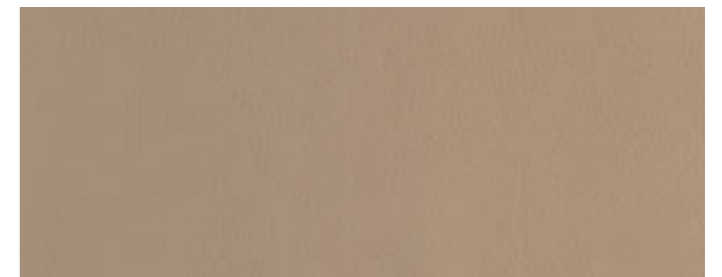
Desert Beige · 'Alcantara' · PQ  
 Sport, Sport BlueMotion Technology



## 'NAPPA' LEATHER



Anthracite · 'Nappa' leather† · YV  
 Optional on SE, SE BlueMotion Technology,  
 Sport, Sport BlueMotion Technology



Desert Beige · 'Nappa' leather† · PQ  
 Optional on SE, SE BlueMotion Technology,  
 Sport, Sport BlueMotion Technology

# COMBINATIONS

Seat upholstery	S, S BlueMotion Technology				Dashboard/Centre console	Paint options													
	S, S BlueMotion Technology	SE, SE BlueMotion Technology	Sport, Sport BlueMotion Technology	Carpet		Candy White B4	Indian Blue F3	Wild Cherry Red Metallic 2K*	Acapulco Blue Metallic 2W*	Java Metallic 4Q*	Silver Leaf Metallic 7B*	Reflex Silver Metallic 8E*	Nimbus Grey Metallic U5*	Slate Grey Metallic X9*	Night Blue Metallic Z2*	Deep Black Pearl Effect 2T*	Venetian Green Pearl Effect E5*		
<b>'Charly' cloth on normal seats</b>																			
Anthracite (YV)	●	–	–	Black	Anthracite/Anthracite	●	●	○	○	○	○	○	○	○	○	○	○		
<b>'Miu' cloth on comfort seats</b>																			
Anthracite (YV)	–	●	–	Black	Anthracite/Anthracite	●	●	○	○	○	○	○	○	○	○	○	○		
Desert Beige (PQ)	–	●	–	Black	Anthracite/Anthracite	●	●	–	○	○	○	○	○	○	○	○	○		
<b>'Alcantara' on sports seats</b>																			
Anthracite (YV)	–	–	●	Black	Anthracite/Anthracite	●	●	○	○	○	○	○	○	○	○	○	○		
Desert Beige (PQ)	–	–	●	Black	Anthracite/Anthracite	●	●	○	○	○	○	○	○	○	○	○	○		
<b>'Nappa' leather† on sports seats</b>																			
Anthracite (YV)	–	○	○	Black	Anthracite/Anthracite	○	○	○	○	○	○	○	○	○	○	○	○		
Desert Beige (PQ)	–	○	○	Black	Anthracite/Anthracite	○	○	–	○	○	○	○	○	○	○	○	○		



● Standard ○ Optional – Not available. \* Metallic and pearl effect paints and 'Nappa' leather are optional at extra cost. † Some parts of leather interior will contain artificial leather.

# TECHNICAL SPECIFICATION

<b>Engine</b>	Engine type	
	Cubic capacity, ltrs/cc	
	Max. output, PS <sup>(01)</sup> /kW at rpm	
	Max. torque, lbs.ft/Nm at rpm	
	Gearbox	
<b>Weights</b>	With manual gearbox: Unladen weight <sup>(02)</sup>	
	Gross vehicle weight	
	Payload <sup>(02)</sup>	
	Axle load limit: Front Rear	
	With automatic DSG gearbox: Unladen weight <sup>(02)</sup>	
	Gross vehicle weight	
	Payload <sup>(02)</sup>	
	Axle load limit: Front Rear	
	<b>Trailer load limits, kgs <sup>(03)</sup></b>	Braked 12% incline – manual gearbox – automatic DSG gearbox
		Unbraked – manual gearbox – automatic DSG gearbox
Towbar load limit		
Max. roof load		
<b>Performance</b>		Top speed, mph (km/h) (where the law permits) – manual gearbox – automatic DSG gearbox
	Acceleration, secs 0 - 62 mph – manual gearbox – automatic DSG gearbox	
	ABI insurance group, 1 - 50 <sup>†</sup>	
	<b>Environmental information</b>	Fuel grade, minimum
Fuel tank capacity, galls/ltrs		
Official fuel consumption – with manual gearbox, mpg/ltr per 100 km <sup>(06)</sup>		
Urban		
Extra-urban		
Combined		
Official fuel consumption – with automatic DSG gearbox, mpg/ltr per 100 km <sup>(06)</sup>		
Urban		
Extra-urban		
Combined		
Official CO <sub>2</sub> emission, g/km – manual gearbox <sup>(07)</sup> – automatic DSG gearbox <sup>(07)</sup>		
Emission class		
Noise, dB – manual gearbox – automatic DSG gearbox		

<sup>†</sup> Please note, as of December 2009 the insurance industry switched from the current rating system of groups 1 - 20 to a new 1 - 50 insurance scale.

<b>S</b> 1.2 litre TSI 105 PS	<b>S BlueMotion Technology, SE BlueMotion Technology</b> 1.2 litre TSI 105 PS	<b>SE</b> 1.4 litre TSI 140 PS
Four cylinder petrol 1.2/1197	Four cylinder petrol 1.2/1197	Four cylinder petrol 1.4/1390
105/77 5000	105/77 5000	140/103 5600
129/175 1550-4100	129/175 1550-4100	162/220 1500
Six speed manual –	Six speed manual –	Six speed manual Seven speed auto DSG
1453	1460	1516
2080	2090	2130
702	705	689
1040	1050	1090
1100	1100	1100
–	–	1536
–	–	2150
–	–	689
–	–	1110
–	–	1100
1300	1300	1500
–	–	1500
720	730	750
–	–	750
75	75	75
100	100	100
115 (185)	117 (188)	125 (202)
–	–	125 (202)
11.9	11.9	9.5
–	–	9.5
12	14	18
Unleaded, 95 RON <sup>(04)</sup> 13.2/60	Unleaded, 95 RON <sup>(04)</sup> 13.2/60	Unleaded, 95 RON <sup>(04)</sup> 13.2/60
35.3/8.0	39.2/7.2	31.7/8.9
51.4/5.5	54.3/5.2	50.4/5.6
44.1/6.4	47.9/5.9	41.5/6.8
–	–	33.2/8.5
–	–	50.4/5.6
–	–	42.8/6.6
149	139	159
–	–	154
EURO 5	EURO 5	EURO 5
73.0	73.0	71.0
–	–	69.0

# TECHNICAL SPECIFICATION

**S**  
**1.6 litre TDI 90 PS**

Engine		
Engine type		Four cylinder diesel
Cubic capacity, ltrs/cc		1.6/1598
Max. output, PS <sup>(01)</sup> /kW at rpm		90/66 4200
Max. torque, lbs.ft/Nm at rpm		170/230 1500-2500
Gearbox		Six speed manual –
Weights		
With manual gearbox:		
Unladen weight <sup>(02)</sup>		1539
Gross vehicle weight		2170
Payload <sup>(02)</sup>		706
Axle load limit: Front		1130
Rear		1100
With automatic DSG gearbox:		
Unladen weight <sup>(02)</sup>		–
Gross vehicle weight		–
Payload <sup>(02)</sup>		–
Axle load limit: Front		–
Rear		–
Trailer load limits, kgs <sup>(03)</sup>		
Braked 12% incline – manual gearbox		1300
– automatic DSG gearbox		–
Unbraked – manual gearbox		750
– automatic DSG gearbox		–
Towbar load limit		75
Max. roof load		100
Performance		
Top speed, mph (km/h) (where the law permits)		
– manual gearbox		108 (174)
– automatic DSG gearbox		–
Acceleration, secs 0 - 62 mph – manual gearbox		14.7
– automatic DSG gearbox		–
ABI insurance group, 1 - 50 <sup>†</sup>		10
Environmental information		
Fuel grade, minimum		Diesel <sup>(05)</sup>
Fuel tank capacity, galls/ltrs		13.2/60
Official fuel consumption		
– with manual gearbox, mpg/ltr per 100 km <sup>(06)</sup>		
Urban		44.8/6.3
Extra-urban		62.8/4.5
Combined		55.4/5.1
Official fuel consumption		
– with automatic DSG gearbox, mpg/ltr per 100 km <sup>(06)</sup>		
Urban		–
Extra-urban		–
Combined		–
Official CO <sub>2</sub> emission, g/km – manual gearbox <sup>(07)</sup>		134
– automatic DSG gearbox <sup>(07)</sup>		–
Emission class		EURO 5
Noise, dB – manual gearbox		TBA
– automatic DSG gearbox		–

<sup>†</sup> Please note, as of December 2009 the insurance industry switched from the current rating system of groups 1 - 20 to a new 1 - 50 insurance scale.

<b>S, SE</b> <b>1.6 litre TDI 105 PS</b>	<b>S BlueMotion Tech, SE BlueMotion Tech</b> <b>1.6 litre TDI 105 PS</b>	<b>SE, Sport</b> <b>2.0 litre TDI 140 PS</b>	<b>SE BlueMotion Tech, Sport BlueMotion Tech</b> <b>2.0 litre TDI 140 PS</b>	<b>Sport</b> <b>2.0 litre TDI 170 PS</b>
Four cylinder diesel 1.6/1598	Four cylinder diesel 1.6/1598	Four cylinder diesel 2.0/1968	Four cylinder diesel 2.0/1968	Four cylinder diesel 2.0/1968
105/77 4400	105/77 4400	140/103 4200	140/103 4200	170/125 4200
185/250 1500-2500	185/250 1500-2500	236/320 1750-2500	236/320 1750-2500	258/350 1750-2500
Six speed manual Seven speed auto DSG	Six speed manual –	Six speed manual Six speed auto DSG	Six speed manual –	– Six speed auto DSG
1539	1544	1579	1582	–
2180	2180	2190	2190	–
716	711	686	683	–
1140	1140	1150	1150	–
1100	1100	1100	1100	–
1557	–	1603	–	1613
2200	–	2220	–	2220
718	–	692	–	682
1160	–	1180	–	1180
1100	–	1100	–	1100
1500	1500	1500	1500	–
1500	–	1500	–	1600
750	750	750	750	–
750	–	750	–	750
75	75	75	75	75
100	100	100	100	100
114 (183)	116 (186)	125 (201)	126 (203)	–
114 (183)	–	124 (199)	–	132 (213)
12.8	12.8	9.9	9.9	–
12.8	–	9.9	–	8.5
13	14	19	19	21
Diesel <sup>(05)</sup>	Diesel <sup>(05)</sup>	Diesel <sup>(05)</sup>	Diesel <sup>(05)</sup>	Diesel <sup>(05)</sup>
13.2/60	13.2/60	13.2/60	13.2/60	13.2/60
44.8/6.3	51.4/5.5	42.8/6.6	48.7/5.8	–
62.8/4.5	68.9/4.1	61.4/4.6	64.2/4.4	–
55.4/5.1	61.4/4.6	53.3/5.3	58.9/4.8	–
46.3/6.1	–	40.4/7.0	–	40.4/7.0
62.8/4.5	–	56.5/5.0	–	56.5/5.0
55.4/5.1	–	49.6/5.7	–	49.6/5.7
134	121	140	127	–
134	–	149	–	151
EURO 5	EURO 5	EURO 5	EURO 5	EURO 5
TBA	71.0	74.0	TBA	–
TBA	–	70.0	–	68.0



# TECHNOLOGY

## Technical specification notes

- 01) The maximum power output figures are quoted in PS (or Pferdestärke, which is the metric equivalent of horsepower). To convert from metric to imperial horsepower, divide the PS figure by 1.0139.
- 02) Figures are calculated in accordance with manufacturer's criteria. The individual unladen weight depends on the specification of the vehicle, this then reduces the possible payload accordingly. The unladen weight and payload both include the fuel tank 90% full, driver (68 kg) and luggage (7 kg) in line with EU directive 95/48.
- 03) With increasing altitude the engine performance diminishes. From 1,000 m above sea level and for every 1,000 m thereafter 10% of the vehicle/trailer weight (trailer weight + gross vehicle weight) must be deducted.
- 04) Thanks to the knock control, unleaded four star (at least 95 RON) can be used instead of unleaded Super plus. In order to achieve maximum fuel consumption benefits on the TSI engine, Ultra Low Sulphur Petrol (ULSP) must be used.
- 05) The use of RME and FAME (bio diesel) is not possible.
- 06) Official fuel consumption according to EU Directive 99/94. The consumption calculation according to 1999/100/EC is based on the actual unladen weight of the vehicle. Additional specifications can lead to a higher weight class and hence to consumption figures of this higher weight class. The driving style, road and traffic conditions, environmental influences and vehicle condition can in practice lead to consumption figures, which may differ from those calculated with this standard.
- 07) The weight of a vehicle will influence the level of CO<sub>2</sub> emission it produces; as a result, vehicles with higher levels of specification and factory-fitted options may emit higher levels of CO<sub>2</sub>.

## Engines

- Front transverse-installed engine
- 1.2 litre/105 PS<sup>(01)</sup> (77 kW) petrol engine: EU5 compliant four cylinder in-line engine, two valves per cylinder and turbocharger module with electric boost pressure regulation. Die cast aluminium cylinder block, dual circuit cooling system, maintenance-free camshaft drive chain with hydraulic tensioner and oil pump driven via maintenance-free toothed chain. Internally routed crankcase breather system with non-return valve. Three way catalytic converter with lambda control
- 1.4 litre/140 PS<sup>(01)</sup> (103 kW) petrol engine: TSI engine with dual-charging, double injection catalytic converter heating, turbocharger with waste gate, additional mechanical supercharger, intercooler, maintenance-free timing chain, continuous inlet camshaft timing adjustment, grey cast iron cylinder block, steel crankshaft, duo-centric oil pump, dual-circuit cooling system, fuel system regulated according to requirements, high-pressure fuel pump with a delivery pressure of up to 150 bar, four valves per cylinder
- 1.6 litre/90 PS<sup>(01)</sup> (66 kW) common rail diesel engine: EU5 emissions standard, four cylinder in-line engine, four valves per cylinder, aluminium silicon alloy cylinder head, reduced piston crown volume (improves swirl generation in the cylinder), toothed backlash compensator, intake manifold with electric continual tumble flap control, electronically controlled common rail direct injection fuel system with Bosch high pressure pump (up to 1800 bar) and 8-hole piezo injector units, pre-supply electronic fuel pump, oil cooler, intercooler, low temperature exhaust gas recirculation, additional coolant pump, turbocharger with variable turbine geometry, catalytic converter and Diesel Particulate Filter (DPF)
- 1.6 litre/105 PS<sup>(01)</sup> (77 kW) common rail diesel engine: EU5 emissions standard, four cylinder in-line engine, four valves per cylinder, aluminium-silicon alloy cylinder head, reduced piston crown volume (improves swirl generation in the cylinder), toothed backlash compensator, intake manifold with electric continual tumble flap control, electronically controlled common rail direct injection fuel system with Bosch high pressure pump (up to 1800 bar) and 8-hole piezo injector units, pre-supply electronic fuel pump, oil cooler, intercooler, low temperature exhaust gas recirculation, additional coolant pump, turbocharger with variable turbine geometry, catalytic converter and Diesel Particulate Filter (DPF)
- 2.0 litre/140 PS<sup>(01)</sup> (103 kW) common rail diesel engine: EU5 emissions standard, four cylinder in-line engine, four valves per cylinder, aluminium silicon alloy cylinder head, reduced piston crown volume (improves swirl generation in the cylinder), toothed backlash compensator, intake manifold with electric continual tumble flap control, electronically controlled common rail direct injection fuel system with Bosch high pressure pump (up to 1800 bar) and 8-hole piezo injector units, pre-supply electronic fuel pump, oil cooler, intercooler, low temperature exhaust gas recirculation, additional coolant pump, turbocharger with variable turbine geometry, catalytic converter and Diesel Particulate Filter (DPF)
- 2.0 litre/170 PS<sup>(01)</sup> (125 kW) common rail diesel engine: EU4 emissions standard (EU5 compliant), four cylinder in-line engine, four valves per cylinder, aluminium-silicon alloy cylinder head, toothed backlash compensator, intake manifold with electric continual tumble flap control, electronically controlled common rail direct injection system with Bosch high pressure pump (up to 1800 bar) and 8-hole piezo injector units, pre-supply electronic fuel pump, oil cooler, intercooler, exhaust gas recirculation, additional coolant pump, turbocharger with variable turbine geometry, catalytic converter and Diesel Particulate Filter (DPF)

## Brakes

- Electronically controlled Anti-lock Braking System (ABS) with Electronic Brake-pressure Distribution (EBD)
- Diagonal twin-circuit brake system with ventilated front disc brakes and rear disc brakes
- Asbestos-free brake pad

## Transmission

- Front wheel drive through asbestos-free single-plate dry clutch. Hydraulic clutch-mechanism. Six speed manual, six or seven speed automatic DSG gearbox with double joint half axles
- Six speed manual: 1.2 litre TSI 105 PS, 1.4 litre TSI 140 PS, 1.6 litre TDI 90 PS, 1.6 litre TDI 105 PS, 2.0 litre TDI 140 PS
- Six speed automatic DSG: 2.0 litre TDI 140 PS, 2.0 litre TDI 170 PS
- Seven speed automatic DSG: 1.4 litre TSI 140 PS, 1.6 litre TDI 105 PS

## Steering

- Electro-mechanical steering rack
- Collapsible, height and lengthways adjustable safety steering column

## Running gear

- Electronic Stabilisation Programme (ESP) including Electronic Differential Lock (EDL), Traction Control (ASR) and Countersteer Support
- Front suspension through coil springs with telescopic shock absorbers, all elements integrated in chassis legs
- Rear suspension with gas pressure shock absorbers and separate springs
- Wheel control: front through chassis legs and (lower) triangular wishbones (directionally stabilising steering roll radius)
- Wheel control: rear through four-link suspension with independent wheel suspension
- Front and rear anti-roll bar

## Dimensions

Exterior dimensions	Length, mm	4397
	Width – excluding door mirrors, mm	1794
	Width – opened front/rear doors, mm	3590/3584
	Height, mm	1634
	Height – with roof bars, mm	1674
	Height – opened bonnet/floor, mm	1865
	Height – opened tailgate/floor, mm	2060
	Wheelbase, mm	2678
	Turning circle, mm	11200
Interior dimensions	Effective headroom – front, mm (with sunroof)	1016 (1018)
	Effective headroom – rear 2nd row, mm (with sunroof)	973 (954)
	Effective headroom – rear 3rd row, mm (with sunroof)	917 (945)
	Elbow width, front, mm	1458
	Elbow width, rear 2nd row/3rd row, mm	1484/1297
Luggage dimensions	Length – seats up, mm (5 seat model)	337 (1142)
	Length – seats down, mm (5 seat model)	1791 (1785)
	Maximum width, mm	1050
	Maximum height, mm	572
	Floor to roof height, mm	1098
Max. luggage capacity, ltrs. VDA measuring method using 200 x 100 x 50 mm blocks	With rear seats upright – 5 seat model (7 seat model)	695 (121)
	With rear seats folded – 5 seat model (7 seat model)	1989 (1913)

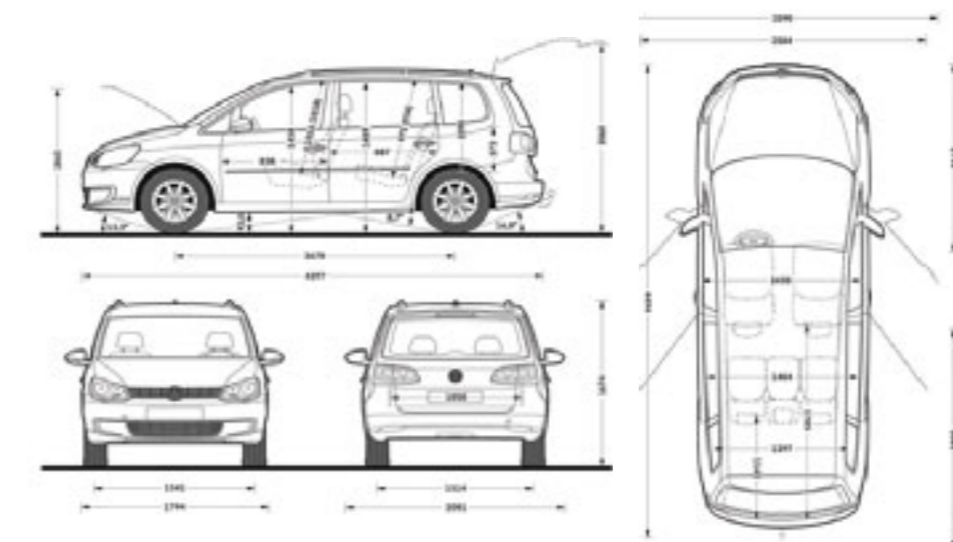


Illustration shown is new Touran 5 seat option.

# THE VOLKSWAGEN SERVICE, FOR YOUR PEACE OF MIND.

## The Volkswagen Warranty.

### Three-year Warranty.

All Volkswagen new Tourans come with a three-year/60,000 miles warranty, which protects your car against the failure of most mechanical and electrical components due to manufacturing defects. This comprises a two-year manufacturer's warranty with unlimited mileage plus a further one-year/60,000 miles (whichever is soonest) Retailer Warranty. Should the mileage exceed 60,000 miles within the first two years, the manufacturer's two-year warranty will still be valid. If an additional warranty for subsequent years or higher mileage is desired, it may be purchased from an authorised Volkswagen retailer or repairer; however, this additional warranty must be purchased before the mileage reaches 60,000\*. Full details of the three-year warranty are available from your authorised Volkswagen retailer or repairer.

\* All warranty work must be completed by an authorised Volkswagen retailer or repairer.

### Three-year Paint Warranty.

The paintwork of the new Touran is covered against manufacturing defects for a period of three years. Naturally, the new Touran must be cared for in compliance with the operating instructions which will be found in your vehicle handbook. Please consult your authorised Volkswagen retailer or repairer for full warranty details.

### 12-year Body Protection Warranty.

The internal body sections and panels of the new Touran are covered against rusting through from the inside for 12 years. Naturally, the new Touran must be cared for in compliance with the operating instructions. Please consult your authorised Volkswagen retailer or repairer for full warranty details.

### Service Intervals.

Volkswagen are pleased to offer you a choice on how your new Touran is serviced. The appropriate selection is entirely dependent on how the car is likely to be driven and its general use. To help you identify which type of service would be most suitable, please refer to the following guide.

The Time and Distance Service is recommended for vehicles that will cover less than 10,000 miles in 12 months and if the vehicle is likely to be used in the following way:

- Predominantly urban driving, short journeys with frequent cold starts.
- Activities regularly producing high engine loading, e.g. frequent hill climbs, driving with vehicle fully loaded and towing.
- Uneconomical driving style using high rpms with heavy acceleration and heavy braking.

The service intervals for the Time and Distance Service are as follows:

- Oil change service  
Every 10,000 miles/1 year (whichever is soonest).
- Interval service  
Every 20,000 miles/2 years (whichever is soonest).
- Inspection service  
Every 40,000 miles/3 years (whichever is soonest).

The LongLife Service is recommended for vehicles with a daily mileage of more than 25 miles where the vehicle is driven regularly mainly on longer distance journeys. The vehicle is driven mainly at a constant speed with minimum vehicle and engine loading, minimal towing and driven in an economical manner.

With the LongLife Service the vehicle can cover anywhere between 10,000<sup>†</sup> and a maximum of 18,000<sup>†</sup> miles or 24 months (whichever is soonest) between oil changes. Inspection service is typically in the third year of ownership and thereafter every second year, for vehicles with an approximate annual mileage of 10,000 miles.

<sup>†</sup> Please note that mileages are approximate as the service indicator system uses kilometres as the distance measurement. Please consult your authorised Volkswagen retailer or repairer for advice and full details.

### Approved Accessories.

A comprehensive range of accessories from alloy wheels to carpet mats is available to complement the factory-fitted option list. Volkswagen approved accessories purchased from and fitted by your authorised Volkswagen retailer at the point of vehicle sale will also benefit from the three-year vehicle warranty.

### Extended Warranty.

You may purchase additional protection from your authorised Volkswagen retailer or repairer, or contact 0870 9000 115.

### Volkswagen Insurance<sup>‡</sup>.

We want you to start enjoying your new car from day one and thanks to Volkswagen Insurance complimentary seven day cover, you can. Call free on 0800 316 7892 (lines are open Monday to Friday 8 am - 9 pm and Saturday 9 am - 5 pm), provide a few details and a cover note will be sent to your retailer. They will then tax your car and you can drive it away.

Visit [www.insurewithvolkswagen.co.uk](http://www.insurewithvolkswagen.co.uk) for details of the full range of insurance products available. Here you can also get a quote for your annual car insurance and buy it online too. All of our insurance products are designed to ease the pain of making a claim.

<sup>‡</sup> Volkswagen Insurance is a trading name of Volkswagen Insurance Service (Great Britain) Limited, an appointed representative of Volkswagen Financial Services (UK) Limited, Brunswick Court, Yeomans Drive, Blakelands, Milton Keynes MK14 5LR. Registered in England number 2835230. Volkswagen Insurance is sold, underwritten and administered by Allianz Insurance plc registered in England number 84638. Registered office 57 Ladymead, Guildford, Surrey GU1 1DB. Volkswagen Financial Services (UK) Limited and Allianz Insurance plc are authorised and regulated by the Financial Services Authority. Volkswagen Financial Services (UK) Limited and Allianz Insurance plc are not part of the same corporate group.

### Volkswagen Finance<sup>±</sup>.

Volkswagen Finance specialises in providing funding solutions for Volkswagen drivers. Whether your Volkswagen is for private or business use, you can choose from a range of funding options.

- Solutions – a personal contract plan
- Hire purchase
- Lease purchase
- Finance lease
- Contract hire

With all Volkswagen Finance products you can choose a fixed-cost maintenance plan to help you budget for your servicing and maintenance costs.

No matter what finance product you choose, your local Volkswagen retailer will be able to provide you with a personalised quote that could meet your budget and vehicle needs.

<sup>±</sup> Volkswagen Finance is a trading name of Volkswagen Financial Services (UK) Limited. An offer of finance depends on certain conditions. Available to people over 18 in the UK only.

### Volkswagen Roadside Assistance.

Every new car is registered for Volkswagen Roadside Assistance for one year. This provides vehicle home and roadside recovery in the unlikely event of a breakdown in the UK and Europe (subject to conditions). Volkswagen Roadside Assistance can also be purchased for subsequent years. For full details, please contact your authorised Volkswagen retailer or repairer.

### Tax Free Sales.

For full details, please contact your authorised Volkswagen retailer.

### CO<sub>2</sub> Emissions.

Increased weight of a vehicle, including higher trim levels and the addition of options will have a detrimental influence on the level of fuel consumption and CO<sub>2</sub> emissions produced.

The CO<sub>2</sub> and fuel consumption figures are obtained from tests on a representative vehicle of the type, conducted and approved in accordance with Council Directive 80/1268/EEC as amended by Directive 1999/100/EC (or later) on the approximation of the laws of the member states relating to the carbon dioxide emissions and the fuel consumption of motor vehicles.

### Please Note:

Some illustrations in this brochure do not necessarily reflect UK specifications and may not be available. In particular, controls and some items of equipment are positioned differently for the UK.

The specifications contained in this brochure are for information purposes only and are subject to change. If you require any specific feature, you must consult your authorised Volkswagen retailer who is regularly updated with any change in specification. Please check model availability and full specification details with your authorised Volkswagen retailer prior to ordering.

Note: We would like to advise you that telephone calls to Volkswagen Customer Care may be monitored and recorded as part of our training and quality assurance processes. All our monitoring and recording processes meet Ofcom regulations.