

**IN A WORLD FULL OF SHRINKING WAGONS,  
IT'S MORE FUN TO TAKE THE BUS.**



**EVERYONE GETS A SEAT...**



# ON THE BUS.

If you've been watching wagons over the past few years, you know that almost all of them have one thing in common. They're smaller than they used to be.

So if "downsizing" is putting the squeeze on you and your passengers, you'll be pleased to know that the VW Bus is as roomy as ever. With standard seating for 7. And optional seating for 9!

In fact, the VW Bus is 70% roomier inside than typical full-size domestic station wagons. Yet it is 4 feet shorter than a Ford LTD wagon, and 2 inches shorter than even the Pinto wagon. So it's easy to park in spaces other vehicles have to pass up.

Best of all, when you take the Bus with your family or friends, you travel in comfort and luxury. Seats are fully padded, and upholstered in good looking, hard wearing leatherette. Sound deadening material is all around you, including the handsome headliner that's meticulously hand fitted. And you have a clear view in all directions through eight large picture windows.

To make driving a pleasure, the Bus comes equipped with independent suspension on all four wheels to soak up road shocks without jolting your passengers. For fast, consistent stopping, there are 10" power-assisted front disc brakes, rear drum brakes with an inertia-controlled rear brake pressure regulator, and long-life radial tires. There's also an electric rear window defogger, a rear seat that folds down for additional cargo space, and floor mats that are cushioned and insulated.

Behind the wheel, you'll find a pair of levers and switches on the steering column for controlling five different functions: Turn signal/lane changer, high/low beams, ignition/steering/starter lock, horn button, and windshield wiper/washer.



A roomy, luxurious interior.



The seat positions you perfectly for an unhindered view of what's ahead.

Standard seating for 7;  
optional for 9.

# THE VERSATILE 1979 BUS...



# AFTER 27 YEARS AND THOUSANDS OF IMPROVEMENTS, THIS MAY WELL BE THE BEST BUS YET.

Since 1951, we've built some two million Bus and Campmobile Bus vehicles, each year making gradual improvements and changes, and then improving on the improvements. And all the while, concentrating on the basics—economy, performance, utility and safety.

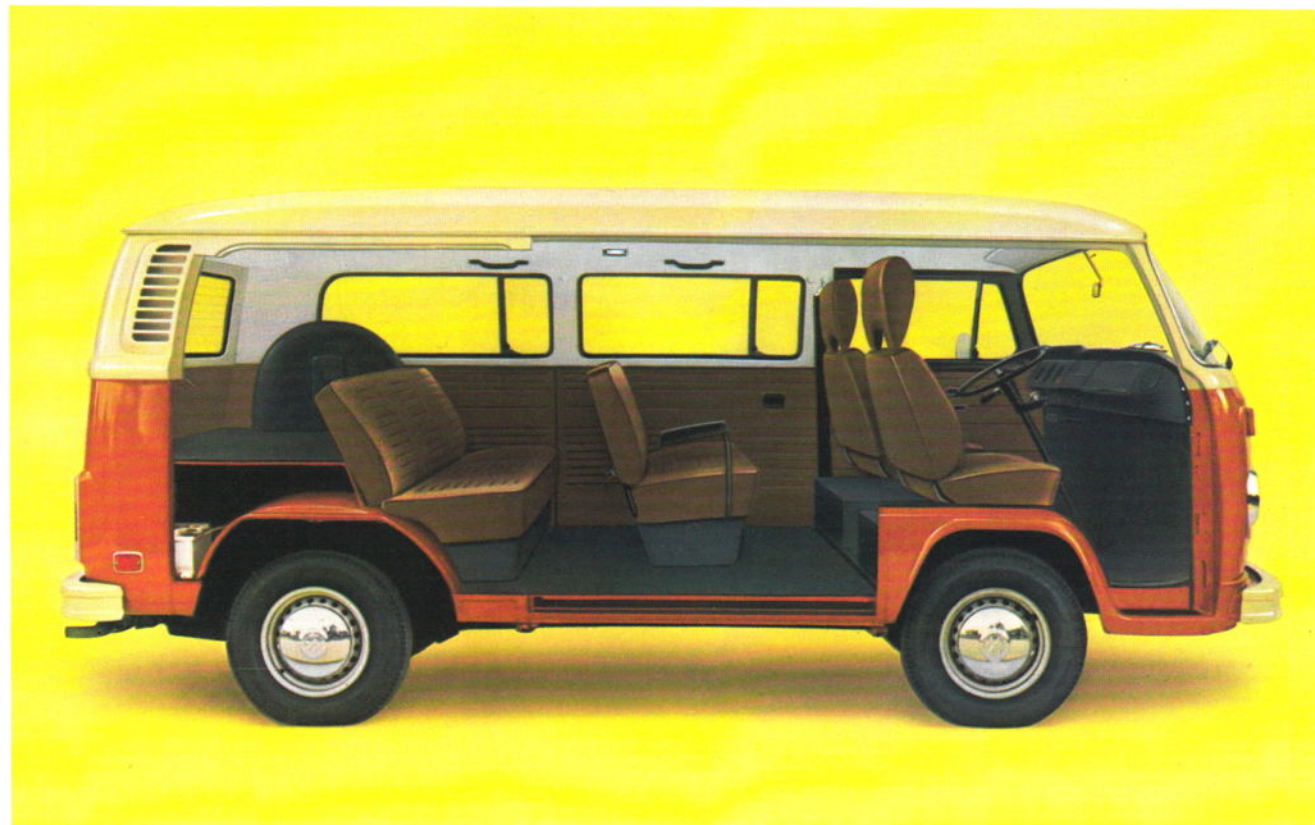
Over the years, we've enlarged the interior of the Bus and made it more and more comfortable. To improve visibility, the size of the windows has been increased. For better stopping, we've incorporated front disc brakes and larger drums in back.

The size and horsepower of the engine have been increased to make the Bus more peppy. And for a quiet ride, we've added hydraulic valve lifters. AFC fuel injection has replaced the carburetor for easier starts, smoother acceleration, and more efficient use of fuel.

According to 1978 E.P.A. estimates, the Bus gets 25 mpg highway, 17 mpg city. (Of course your actual mileage may vary depending on where and how you drive, your Bus' condition and whether you choose optional equipment such as an automatic transmission. 1979 E.P.A. estimates not available at press time. Ask your dealer for a free copy of the EPA/FEA Gas Mileage Guide for New Car Buyers.)

Amazing mileage for a Bus that's big enough to accommodate up to nine passengers.

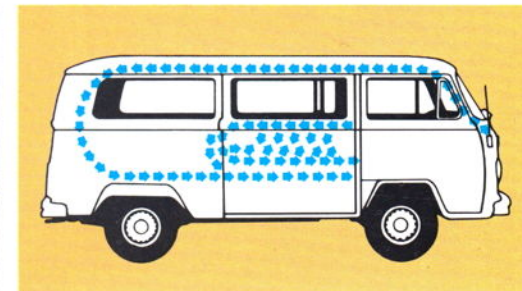
The peppy 2-liter fuel injected engine gives you plenty of power, even with up to nine on board.



There's room on the Bus for people and luggage.



The 2-liter fuel injected engine.



Flow-through ventilation.

## WHETHER YOU HAUL A CROWD OR A LOAD...YOU'LL TAKE THE BUS.

Step to the side of the Bus, and you'll find a really grand opening — a sliding door that moves back to reveal a doorway measuring 41" x 48". That's plenty big enough to load up the Bus with virtually anything you'll ever want to carry. (We once marched a baby elephant in with room to spare.) In the back of the Bus you'll find a large rear hatch. So you can actually load the vehicle from both ends.

For big jobs, you can fold down the rear seat and practically double the cargo area. And for really big jobs, simply slip out the two rear seats and you'll have as much clear deck area as a small truck — plenty of room for such large items as a washing machine or chest of drawers.

All told, the Bus offers you a total of 176 cubic feet of cargo space. Not bad for a vehicle that's just 22 inches longer than the Rabbit. With a turning circle several feet shorter than any full size wagon. And that's parkable in the same space as the average compact car.

---

1. A large rear hatch. 2. 176 cubic feet of anything space. 3. Large pieces of furniture fit through the big side door. 4. The sliding side door opens to a cavernous 41" x 48".



# BUS SERVICE YOU AND YOUR FAMILY CAN RELY ON.

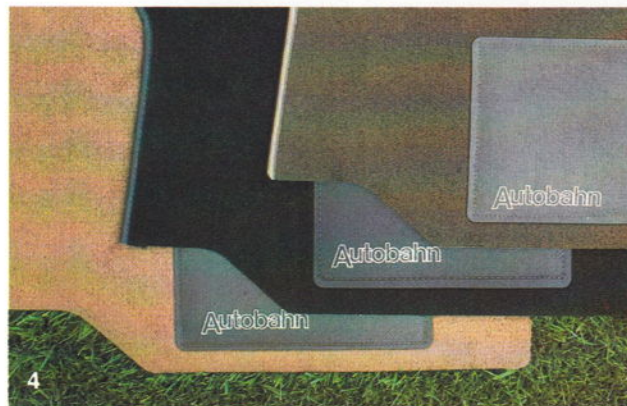
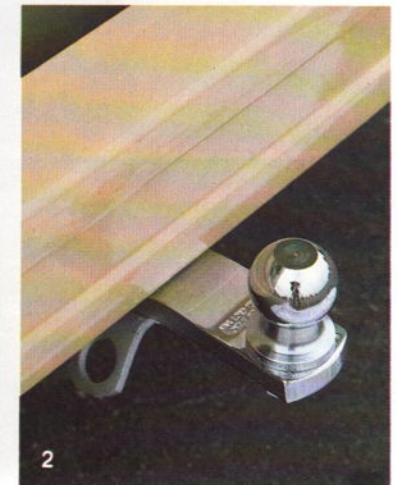
Wherever you go by Bus, help is always at hand from the professionals who know your vehicle best — the more than 1,000 VW dealers located in every state of the U.S.

Each is staffed with specially trained VW mechanics who work with special Volkswagen tools. No matter which dealer you go to, your Bus will receive fast, reliable service. And you'll find a fully stocked, extensive parts inventory, backed up by a nationwide computerized parts network.

# ACCESSORIES MAKE IT EVEN MORE FUN TO TAKE THE BUS.

To make your versatile Bus or Campmobile Bus even more versatile, your VW dealer offers a wide range of optional accessories. All are specifically designed for the Bus or Campmobile Bus, so you can be sure of a perfect fit and the same high level of performance as you expect from your VW itself.

1. Detachable roof carrier large enough for a queen-size mattress. 2. Trailer hitch with chrome-plated steel ball. 3. AM/FM Stereo radio with tapeplayer. 4. Color-coordinated floor mats. 5. Spoke accent wheel covers. 6. Compact, yet efficient air conditioner. 7. A pair of piercing fog lamps.



# VW CAMPMOBILE BUS. IT'S A WEEKDAY WORK HORSE...



## **It may well be the most versatile vehicle your family can own.**

If you need a second car and a second home, the VW Campmobile Bus is the ideal combination.

It's perfect for commuting to work, carrying the kids or hauling just about anything you'd ever want to haul. And it's economical enough to do the job on a tight budget. According to 1978 E.P.A. estimates, the Campmobile Bus gets 25 mpg highway, 17 mpg city with standard transmission. (Of course, your mileage may vary depending on your driving habits, your Campmobile Bus' condition and whether you choose

optional equipment such as an automatic transmission. 1979 E.P.A. estimates not available at press time. Ask your dealer for a free copy of the EPA/FEA Gas Mileage Guide for New Car Buyers.)

On weekends or vacations, the Campmobile Bus is a fully equipped home away from home—with plenty of room for a couple and a couple of kids.

## **It's the home you'll love to drive.**

The Campmobile Bus is an eminently drivable way to bring your accommodations with you. Its powerful 2-liter fuel injected engine gives you plenty of pull for the long haul. And its short overall length makes it

easily parkable, easily turnable in a circle just 37.1 ft. curb to curb, and easily maneuverable in heavy traffic and tight places.

## **Inside you'll find everything your family needs to set up "Bus-keeping".**

All the amenities you expect in a home, and don't expect when you're camping:

A color-coordinated, decorator designed interior that includes curtains on all the windows; insulated paneling on the walls; screens and louvers on side windows; screening on the rear hatch; a fluorescent ceiling light; wall-to-wall loop pile carpeting; an ice box





# AND A WEEKEND PLAY HOUSE.

or optional 12-volt refrigerator; an optional 2-burner gas stove; a kitchen sink with built-in water tank; and even a plug for your TV or appliances.

There's a fold-away dining room table with a drop leaf, and a snack table for a quick bite. The front passenger seat swivels to become a living room or dining room chair. And there are closets and storage lockers for all your gear.

When you stop in a campground with hook-up facilities, it's nice to know your Campmobile Bus is equipped with a 110-volt power outlet and an optional connection for external water supply.

Not bad!

## **Your family is at home, wherever and whenever you arrive.**

Whether you're stopping for dinner or to bed down for the night, your Campmobile Bus converts in seconds from a comfortable vehicle into a kitchen/dining room combination or a bedroom.

Hooking into outside utilities takes just seconds. And with or without them, the kitchen sink and optional 2-burner stove are ready for use as soon as you arrive. Conversion to a bedroom is just as easy—simply fold down the rear seat to make a comfortable double bed. Flip the pop-up top and you have a second double bed.

## **No matter how far afield your Campmobile Bus takes you, you're never very far from a VW dealer.**

Many motor homes and van conversions can only be serviced at a limited number of locations. Your Volkswagen Campmobile Bus can get attention at any of the more than 1,000 VW dealers in all 50 states of the Union.

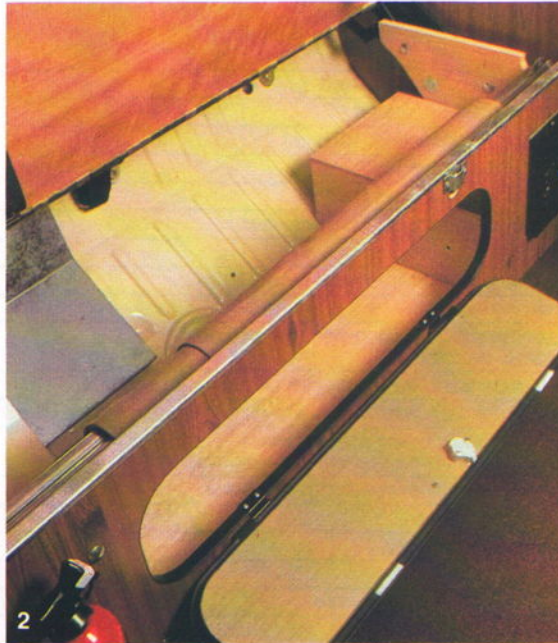
Each dealer has specially trained mechanics backed up by an extensive inventory of special tools and parts. And he can tie into a nationwide computerized parts locator network.

**EVERYTHING YOUR FAMILY  
NEEDS TO SET UP "BUS-KEEPING".**





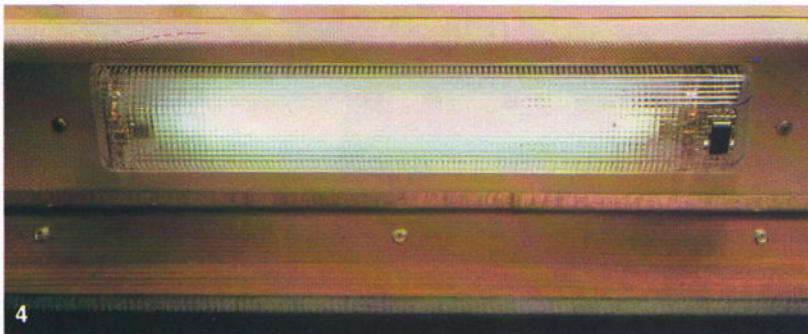
1



2



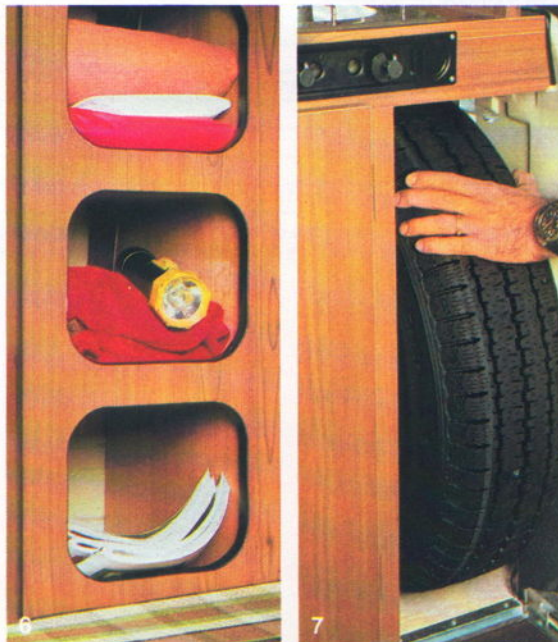
3



4



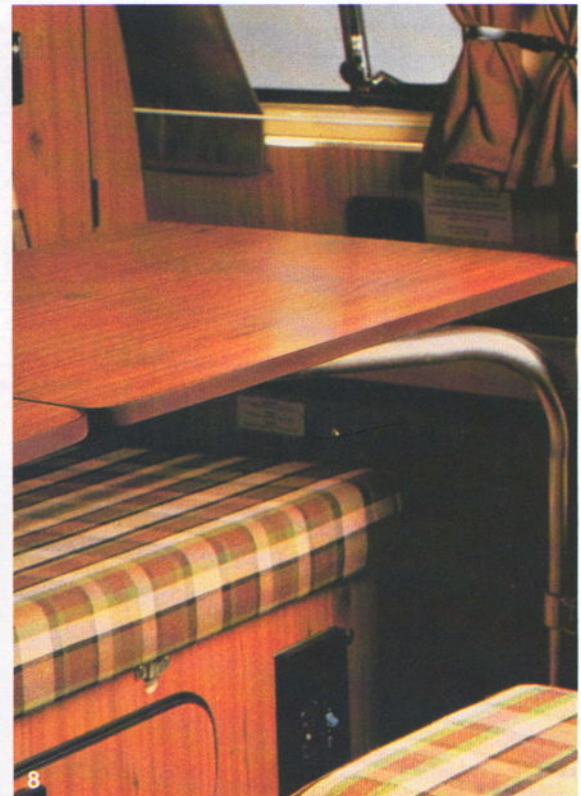
5



6



7



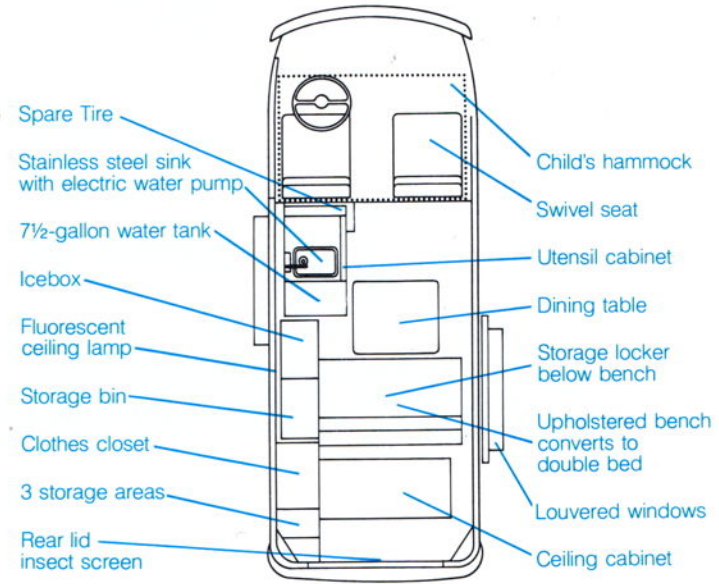
8

1. Luggage Carrier measures 46¼" x 22¼". Includes buffer rods and tie-down hooks. Raise the pop-up top, and it's easy to reach luggage on the rack. 2. Large storage locker is easily accessible by lifting bench seat or dropping front flap. 3. Concealed ceiling cabinet and clothes closet with vanity mirror on door. 4. Transistorized fluorescent ceiling lamp, powered by

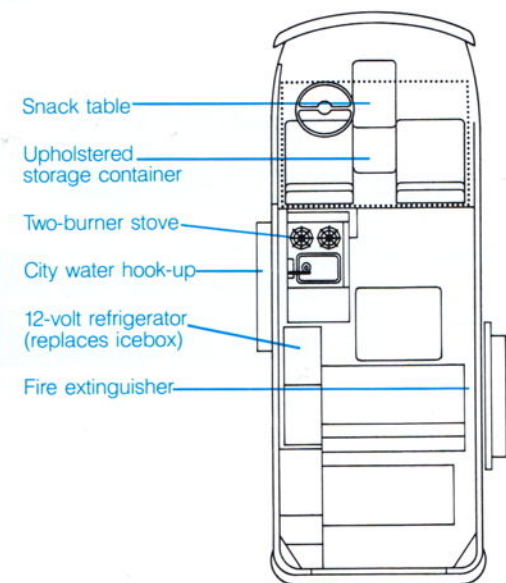
Campmobile Bus battery. 5. Swiveling front seat rotates 180° to convert to a convenient living room easy chair (only when vehicle is stationary). 6. Triple storage area holds loads of gear. 7. Spare tire storage inside Campmobile Bus protects against theft. Tire is fully inflated. 8. A dinette table with hinged side leaf—plenty of room for a simple lunch or gourmet feast.



**Interior features of the Standard Campmobile Bus with Pop-Up Top (P22)**

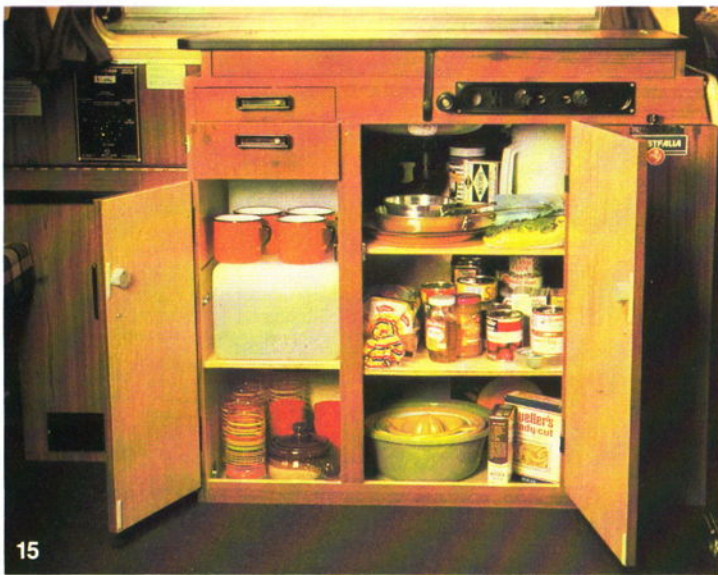


**Additional Features of the Deluxe Campmobile Bus with Pop-Up Top (P27)**



9. Refrigerator control panel with pilot light and meter. Operates on 110V AC through 12V DC converter with timer for battery charging and refrigerator operation (P27 only). 10. Exterior electrical connection for hook-up to power source at home or campground. 11. External water hook-up for home or campground (P27 only). 12. Double outlet for 110V TV or appliances. Panel has master switch and circuit breaker. 13. Refillable 6.6 lbs. propane tank for 2-burner stove (P27 only).\* 14. Dry chemical fire extinguisher (P27 only).

\*Observe local regulations regarding installation and conveyance of propane bottles when entering tunnels and bridges.



15



16



17



18



19



20



21

**15.** 7½-gallon water tank and utensil cabinet. Tank is transparent for easy checking of fluid level. **16.** Compact quick-snack removable table measures 18" x 15" (P27 only). Stores behind driver's seat. Front passenger seat swivels for convenience when vehicle is stationary. **17.** Large comfortable double bed sets up in seconds by simply folding down the full-width rear bench seat. **18.** 1.1 cu. ft. refrigerator with thermostat. Operates on battery power when

you're on the go; 110V AC/12V DC when parked. (P27 only. P22 has 1.1 cu. ft. icebox.) **19.** Comprehensive kitchen console, with counter space and sink with electric pump and dual control handle. Two burner gas stove (P27 only) has protective backsplash. **20.** Double bed under pop-up top has 6' x 3' x 10" foam rubber mattress. **21.** Child's hammock stretches above front seats. Curtains cover the windshield for privacy.

## 1979 Bus and Campmobile Bus Specifications.

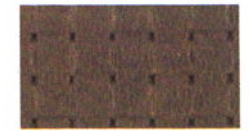
<b>ENGINE:</b>	Type	Air-cooled, rear mounted	
	Cylinders	4 cylinders, opposed	
	Displacement	120.2 cubic inches (1970 cc)	
	SAE Net Hp	67 @ 4200 rpm	
	Fuel/Air Supply	AFC fuel injection	
<b>TRANSMISSION &amp; DIFFERENTIAL:</b>	Type	Fully synchronized transaxle, rear	
	No. Speeds	4 forward, 1 reverse	
	Final Drive	Rear wheel drive, double-jointed axles	
	Clutch	Single disc, dry	
<b>CHASSIS &amp; SUSPENSION:</b>	Frame	Unitized construction with box-shaped side and cross members	
	Front Suspension	Independent, transverse torsion bars, stabilizer bar	
	Rear Suspension	Independent, with trailing and diagonal arms, torsion bars	
	Service Brake	Dual circuit, power-assisted discs/drums, inertia controlled rear pressure regulator	
	Parking Brake	Mechanical, operated on rear wheels	
	Rim Size	5½J x 14 Steel	
	Tire Size	185 R14 radial-ply	
	Steering	Roller-type	
	<b>ELECTRICAL SYSTEM:</b>	Rated Voltage	12 Volt 55 Amp alternator
		Battery	12 Volt, 54 Amp/hour
<b>DIMENSIONS:</b>	Wheelbase	94.5 inches	
	Length	177.4 inches	
	Width	69.3 inches	
	Height (Unloaded)	77.0 inches (80.0 inches Campmobile)	
	Ground Clearance (Loaded)	7.9 inches	
<b>PERFORMANCE:</b>	Turning Circle	37.1 feet (curb to curb)	
	Top Speed	75 mph	
	Fuel Mileage*	Highway: 25 mpg City: 17 mpg	

\*Based on 1978 EPA estimated mileage with manual transmission. Your actual mileage may vary, depending on where and how you drive, your car's condition and optional equipment. 1979 data not available at press time. Ask your local dealer for a free copy of the EPA/FEA Gas Mileage Guide for New Car Buyers.

## 1979 Bus Colors.



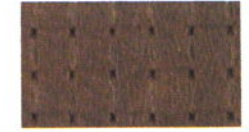
Agate Brown/Mexico Beige



Canyon Brown



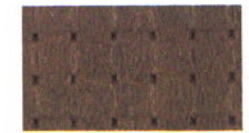
Bright Orange/Mexico Beige



Canyon Brown



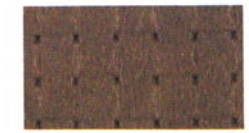
Agate Brown/Panama Brown



Canyon Brown



Sage Green/Mexico Beige

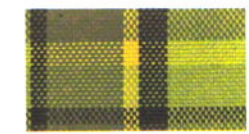


Canyon Brown

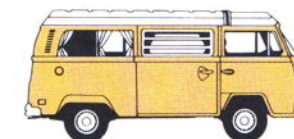
## 1979 Campmobile Bus Colors.



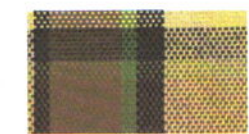
Sage Green  
P-22 Model only



Green Plaid



Mexico Beige  
P-27 Model only



Brown Plaid

