



1982

THUNDERBIRD

LOOK OUT WORLD
HERE COMES FORD



THUNDERBIRD **HERITAGE** SERIES

THUNDERBIRD FOR 1982 Technology and Innovation. That's our style for '82. Out of the rich tradition of Thunderbird comes the 1982 model—a car that is "Thunderbird" in every sense of the word and by every measure. This latest Thunderbird offers all of the luxury, innovation and prestige you've come to expect of this sporty luxury car.

You'll learn here of Ford technological advances (examples: the all-new 3.8 liter V-6 engine and the innovative Automatic Overdrive transmission).

Above all, there is a Ford commitment to quality in the '82 Thunderbird. This is your assurance that this latest Thunderbird should measure up to your expectations.



Center: Heritage crushed velour cloth split bench seats in Midnight Blue.

Left: Thunderbird's deep-well trunk.

Below: Thunderbird Heritage in Dark Brown Metallic with matching vinyl roof.

Covers: Thunderbird Town Landau in Black.



THUNDERBIRD **TOWN LANDAU** SERIES

Right: Right-hand remote control mirror.

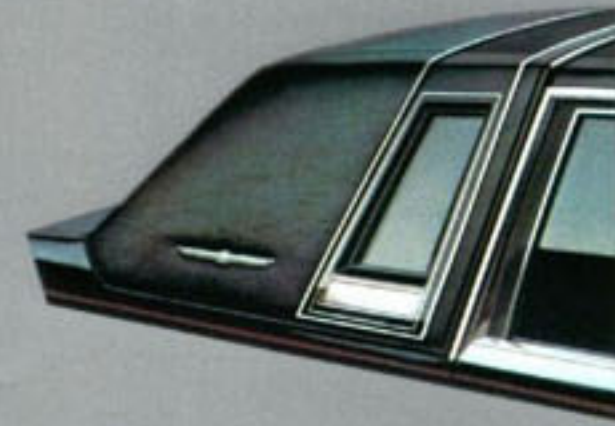


R. center: Town Landau instrument panel. Some features shown are optional.



L. center: Town Landau split bench seats in Fawn knit cloth.

Left: Town Landau wrapover roof treatment.



Below: Thunderbird Town Landau in Tu-Tone Pastel Vanilla/Medium Vanilla with Vanilla vinyl roof.

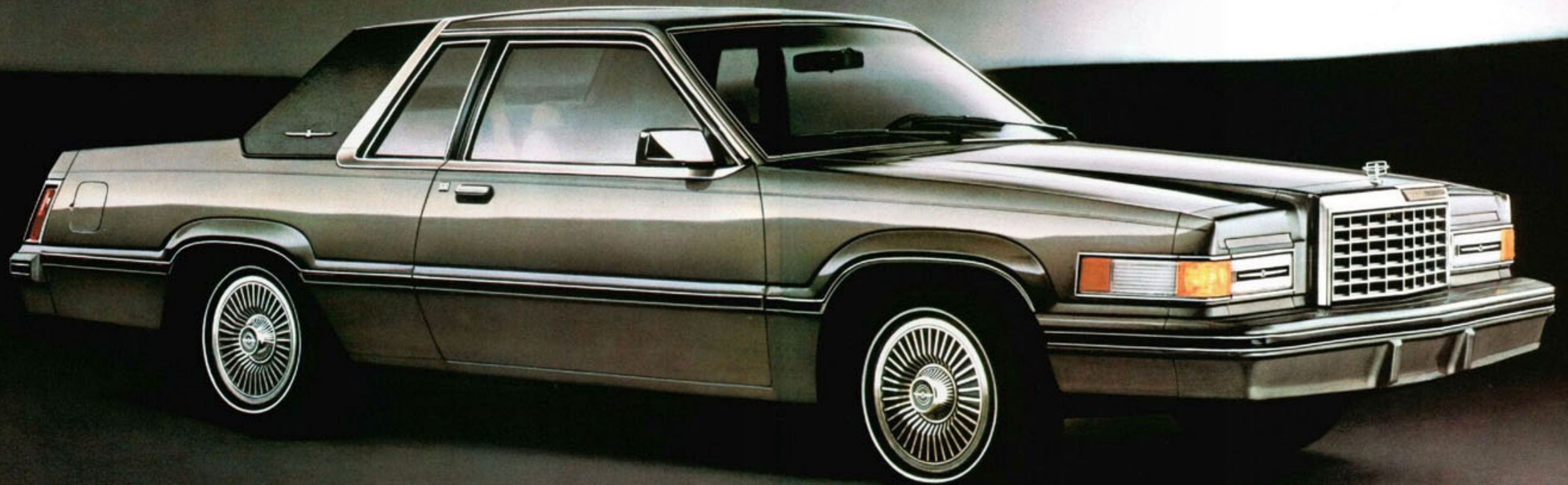


THUNDERBIRD SERIES

Right: Thunderbird in Medium Vaquero Glow with Carriage Roof option in White.



Below: Thunderbird in Medium Pewter Metallic with Exterior Decor Group.



Center: Thunderbird's standard flight bench seat, fine-ribbed cloth, in Dark Red.



Left: Thunderbird's optional bucket seat in Midnight Blue vinyl.

THIS IS **THUNDERBIRD** FOR 1982.



Three distinctive series, each built to be driven with pride.

Clean lines with a dash of sportiness. With great comfort, luxury and efficiency. Everything that is traditionally associated with Thunderbird is here in a contemporary, aerodynamic and distinctive design.

And along with its sporty styling and luxury, Thunderbird responds to your concerns for fuel efficiency with state-of-the-art technology. For example, the '82 Thunderbird, while offering you a full measure of Thunderbird luxury and riding comfort, is powered by a 3.3 liter 6-cylinder engine teamed with the SelectShift automatic transmission. It's a highly fuel-efficient combination with ratings of 24 est. hwy. and [18] EPA est. mpg.* In addition, there is an all-new, efficient 3.8 liter V-6 engine option which, when teamed with the Automatic Overdrive transmission, offers higher ratings than the standard Six—30 est. hwy. and [18] EPA est. mpg.* More about this remarkable all-new V-6 and all the other benefits of Ford engineering technology is included in "A Closer Look" on the pages immediately following.

As in the past, all the 1982 Thunderbirds are especially well-equipped cars. Consult the Notable Standard Features chart in the Data Center, pages 12-13, and you'll quickly see what we mean. For '82, Thunderbird provides you the means to express your individuality in the model of your choice. As always, the Thunderbird Options Selector (pages 14-15) with its full range of equipment suggestions can help you make your Thunderbird individually elegant or stylishly practical or anything in between.

THUNDERBIRD SERIES A touch of class.

Many people are pleasantly surprised to find that Thunderbird, for all its accent on luxury and contemporary style, is a very practical car. It is the realization of this fact that has made a good many of them Thunderbird owners in the first place.

See how beautifully the 1982 Thunderbird series balances luxury with function. To begin with, there is very comfortable seating for four adult passengers. And for trips, a large trunk measuring nearly 18 cu. ft. with a deep-well center section to hold luggage upright. Column-mounted controls place those most frequently used at your fingertips. Power-assisted steering and braking, of course. A 3.3 liter Six and SelectShift automatic transmission are a fuel-efficient power team, and there's a new 21-gallon fuel tank to increase Thunderbird's

cruising range to 504 miles est. hwy. range and [378] miles EPA est. range.* Modified MacPherson strut front suspension with 4-bar link rear suspension for a ride that adds another special ingredient to Thunderbird ownership.

In 1982, the practical demands of today's driving, as well as your desire for sporty luxury, make Thunderbird your logical choice.

THUNDERBIRD TOWN LANDAU SERIES An elegant experience.

Town Landau is a separate interpretation of Thunderbird style with its own special distinctiveness. Town Landau's exterior styling cues include wide door belt moldings, hood and bodyside accent stripes, and luxury wheel covers. Town Landau's distinctiveness continues with its own padded rear half vinyl roof with color-coordinated wrapover band.



Far Left: Thunderbird (shown on pages 6-7) in Medium Pewter Metallic with Exterior Decor Group.

Center: Thunderbird Heritage (shown on pages 2-3) in Dark Brown Metallic with matching vinyl roof.

Left: Thunderbird Town Landau (shown on pages 4-5) in Tu-Tone Pastel Vanilla/Medium Vanilla with Vanilla vinyl roof.

The gracious interior features reclining split bench seats of rich knit cloth (bucket seats and console are an option) in the Decor level trim style and Coco Bola woodtone instrument panel appliques. There are many conveniences: door assist straps, passenger visor vanity mirror, the Light Group (for components, see Options Selector), diagnostic warning lights that monitor seven car functions. There is a 5-position tilt steering wheel and interval windshield wipers that provide settings to match everything from drizzle to downpour. For your entertainment, an AM/FM stereo radio is standard.

Town Landau for 1982—all Thunderbird and then some.

THUNDERBIRD HERITAGE SERIES Everything that adds up to luxury.

Here is the ultimate Thunderbird. You sense it immediately in the padded rear half vinyl roof with brushed aluminum wrapover band. Rich coach lamps. The distinctive frenched backlight. The sporty touch of sparkling wire wheel covers. The elegant Heritage hood ornament, with its "cut glass" look. And a special note of distinction: A bright rhodium owner's nameplate, properly engraved, sent to you following delivery to be mounted on the instrument panel.

The Thunderbird Heritage is one of the most completely equipped cars in America. You have a 6-way power driver's seat for added comfort. Driver information is transmitted to you by the space-age Electronic Instrument Cluster (detailed on the following pages). Thunderbird's Autolamp On/Off/Delay System automatically turns headlamps on at dark, off at sunrise while on the road, and lights your way into the house. There's air conditioning for year-round comfort. An electronic AM/FM stereo search radio for your entertainment. And the new 3.8 liter engine with Automatic Overdrive transmission delivers V-6 performance with high fuel efficiency.

The fully appointed interior is as comfortable as it is attractively styled. Luxurious split bench seats, which can be individually adjusted, are trimmed in crushed velour cloth. Each seat has its own folding armrest. Burlled Rosewood appliques add to the richness of the door trim panels and instrument panel. There is an illuminated visor vanity mirror on the passenger side plus dual beam map light and instrument panel courtesy lights. Even the luggage compartment in Heritage is finished with luxury trim.

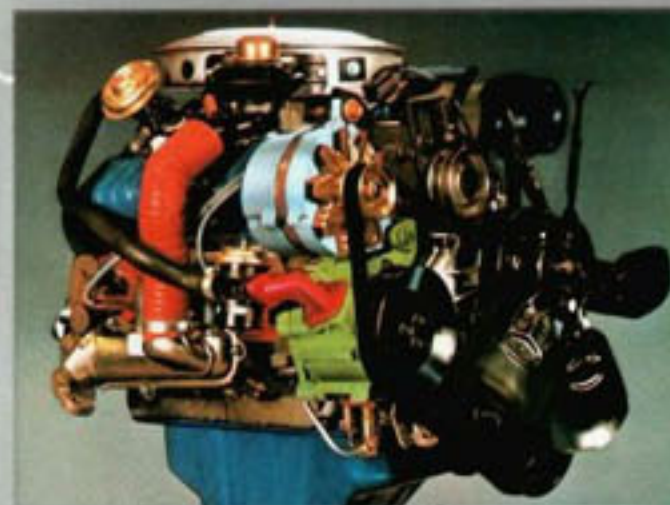
Of course, there is much more to Heritage than we've highlighted here. The ultimate experience of the Thunderbird Heritage comes when you get behind the wheel. The ride and feeling that will be yours in your first test drive may convince you that Heritage is the car you have been looking for.

*Projected Ford Division estimates for comparison. Range is based on projected estimates and Thunderbird's 21-gallon fuel tank. Your mileage and range may differ depending on speed, distance and weather. Actual highway mileage and range will probably be lower. California V-6 estimates higher. See your Ford Dealer for his 1982 EPA Gas Mileage Guide.

THUNDERBIRD — A CLOSER LOOK.

Right: Thunderbird's modified MacPherson strut front suspension.

R. center: The optional Keyless Entry System.



L. center: New 3.8 liter (232 CID) V-6 engine option (colors added for display purposes).

Left: New Tripminder® Computer option.

Thunderbird innovation is clearly evident in the impressive array of advanced electronic options which are highlighted on this page. And that same Ford high technology is at work to produce Thunderbird's hallmarks: luxury and comfort. A closer look at Thunderbird reveals a commitment to quality that typifies Ford cars for 1982.

New 3.8 liter (232 CID) V-6 Engine Option. Refinements in combustion chamber design and valve porting help achieve high fuel efficiency in the new V-6, with estimates of 30 est. hwy. and 18 EPA est. mpg when teamed with Automatic Overdrive.* And for all this efficiency, the 3.8 liter V-6 has the power of our small V-8. Includes the SelectShift automatic transmission with new locking torque converter.**

Automatic Overdrive Transmission. Introduced on the 1980 Thunderbird, this technically innovative transmission automatically shifts into a fourth overdrive gear at about 40 mph (45 mph with the 3.8 liter V-6) in D (Drive), causing the engine to turn more slowly by one-third and substantially improving highway fuel economy. Standard on Heritage, included with 4.2 L V-8.

SelectShift Auto-Lock Transmission Option.** The new SelectShift transmission incorporates a locking torque converter which, unlike conventional automatics, provides a near mechanical linkup between the engine and transmission in all three forward gears. The result is less torque converter slippage than non-locking automatics. Available with the 3.8 liter V-6 engine only.

Modified MacPherson Strut Front Suspension. The MacPherson design up front is teamed with a 4-bar link rear suspension and also includes front and rear stabilizer bars. This is the same suspension concept used on many European luxury sedans.

Variable Ratio Power Rack and Pinion Steering. The convenience of power is teamed with the precision of rack and pinion steering. Steering gears were selected to ensure low steering effort for a luxury feel. The variable ratio feature provides fewer steering wheel turns during turning and parking maneuvers than non-variable systems, while maintaining a stable steering center feel at highway speeds.

Aerodynamic Design. Not only are Thunderbird's clean lines stylish, but testing reveals that they are aerodynamically efficient as well. Thunderbird is a fine example of form and function, so important for today's economy requirements.

Deep-Well Trunk. Lifterover height is comfortably low for easy loading and unloading of the standard deep-well trunk, which offers a full 17.7 cu. ft. of cargo area. A handy light is standard.

Diagnostic Warning Lights. Attractively positioned at eye level across the top edge of the instrument panel, the optional Diagnostic Warning Lights signal: "door ajar," "low washer fluid," "headlamps on" (accompanied by a warning chime), "low beam out," "brake lamp out," "taillamp out," "low fuel." Also shown are the standard warning lights "temp" (above nor-

mal) and "oil" (pressure low) at either end. Standard on Town Landau and Heritage, included with Interior Luxury Group. Shown below.

Electronic Instrument Cluster. Includes the digital speedometer, electronic fuel gauge and electronic digital clock. The speedometer features a large numerical readout. The fuel gauge registers more precisely to the eye the level of fuel in the tank than any needle-type gauge. A touch of a button and the electronic digital clock reads out the time of day, the elapsed time of your trip, or the date. Standard on Heritage. Shown below.

New Tripminder® Computer Option. This useful information center includes the features of the electronic digital clock plus readouts for: (1) trip average speed, (2) instantaneous distance per gallon,

(3) trip average distance per gallon, (4) fuel used. English/metric conversion is also featured.

Keyless Entry System. Five small calculator-type pushbuttons in the upper driver's door act as your key with this convenience option. When depressed in the proper coded sequence, doors and decklid can be locked or unlocked automatically. Code can be changed at any time by the owner. Includes automatic door locking feature.†

*Projected Ford Division estimates for comparison. Your mileage may differ depending on speed, distance and weather. Actual highway mileage will probably be lower. California V-6 estimates higher. See your Ford Dealer for his 1982 EPA Gas Mileage Guide.

†Except with Recaro bucket seats.
**Delayed availability. Consult your Ford Dealer for details.



THUNDERBIRD DATA CENTER



FORD LIMITED CORROSION PERFORATION WARRANTY

Thunderbird, like all new model Ford cars sold in the 50 United States, is covered by Ford Motor Company's 3-year, unlimited mileage corrosion perforation warranty. Under this warranty any part which, in normal use, rusts through from corrosion within three years of retail delivery or first use will be repaired or replaced free of charge by the selling dealer after inspection by a Ford representative. Exhaust system components or parts which develop corrosion perforation as a result of accidents or other damage are not covered.

FORD-PAID REPAIR PROGRAMS AFTER THE WARRANTY PERIOD

Sometimes Ford offers adjustment programs to pay all or part of the cost of certain repairs. These programs are intended to assist owners and are in addition to the warranty or to required recalls. Ask Ford or your dealer about such programs relating to your Ford or Lincoln-Mercury vehicle.

To get copies of any adjustment program for your vehicle or the vehicle of interest to you:

Call Ford toll-free at 1-800-241-3673. Alaska and Hawaii call 1-800-243-3711 and in Georgia call 1-800-282-0959.

Or write Ford at:
Ford Customer Information System
Post Office Box 95427
Atlanta, Georgia 30347.

We'll need your name and address; year, make, and model vehicle, as well as engine size; and whether you have a manual or automatic transmission.

NOTABLE STANDARD FEATURES

ENGINEERING	Thunderbird	Town Landau	Heritage
3.3 liter [200 CID] 1V 1-6 engine	S	S	NA
3.8 liter [232 CID] 2V V-6 engine	O	O	S
SelectShift automatic transmission	O	O	NA
Automatic Overdrive transmission	O	O	S
DuraSpark electronic ignition	S	S	S
Electronic voltage regulator	S	S	S
Maintenance-free battery	S	S	S
Modified MacPherson strut-type front suspension/4-bar link rear suspension	S	S	S
Power front disc/rear drum brakes	S	S	S
Variable ratio power rack and pinion steering	S	S	S
P-metric WSW steel-belted radial ply tires [4]	S	S	S
Mini spare tire	S	S	S

EXTERIOR

Concealed rectangular halogen headlamps	S	S	S
Front cornering lamps	S	S	S
Left-hand remote control mirror	O	O	S
Dual remote control mirrors	O	O	S
Wide door belt moldings	O	O	S
Black vinyl insert bodyside moldings with partial wheelip moldings	O	O	S
Hood and bodyside accent stripes	O	O	S
Decklid accent stripes	NA	NA	S
Padded rear half vinyl roof with color-coordinated wrapover band and coach lamps (Luxury vinyl roof)	O	S	NA
Padded rear half vinyl roof with brushed aluminum wrapover band, coach lamps and frenched backlight	NA	NA	S
Tinted glass — complete	O	O	S
Full wheel covers [4]	NA	NA	NA
Luxury wheel covers [4]	O	O	NA
Wire wheel covers [4]	O	O	S
Rocker panel moldings	O	O	S

INTERIOR

Two-tier instrument panel	S	S	S
Quartz electric (sweepband) clock	S	S	NA
Trip odometer	S	S	S
Diagnostic warning lights	S	S	S
Interval windshield wipers	S	S	S
Autolamp On/Off/Delay system	S	S	S
AM radio (may be deleted for credit)	O	NA	NA
AM/FM stereo radio	O	O	NA
AM/FM stereo search radio	O	O	NA
Electronic instrument cluster	S	S	S
Air conditioning (manual temperature control)	O	O	S
Tilt steering wheel	S	S	S
Automatic parking brake release	S	S	S
Day/night inside mirror	S	S	S
Lighted glove box/ashtray	S	S	S
Illuminated visor vanity mirror	S	S	S
Light Group*	S	S	S
Flight bench seat in fine-ribbed cloth and vinyl trim	S	S	NA
Interior Decor Group*	S	S	NA
Interior Luxury Group*	S	S	NA
6-way power driver's seat	S	S	S
Color-keyed deluxe belts with pleasant reminder chime	S	S	S
Inertia seat back releases	S	S	S
Color-keyed 10-oz. cut-pile carpeting	S	S	S
Power lock group	S	S	S
Power side windows	S	S	S
Deep-well trunk	S	S	S
Luggage compartment light	S	S	S
Luxury luggage compartment trim	O	O	S

*See Options Selector (pages 14 and 15) for contents.
S = Standard O = Optional NA = Not Available

MEASUREMENTS

Wheelbase	108.4"
Length	200.4"
Height	53.3"
Width	74.1"
Tread Front	58.1"
Tread Rear	57.0"
Trunk Space	17.7 cu. ft.*
Fuel Capacity	21.0 gal.
Curb Weight (approx.)	3,169 lbs.
Passengers	4

*16.3 cu. ft. with Luxury Luggage Compartment Trim. 14.4 cu. ft. with conventional spare tire. 13.3 cu. ft. with both.

COLORS AND TRIMS

INTERIOR TRIM COLORS	EXT. PAINT COLORS	Black	Light Pewter	Medium Metallic	Medium Metallic	Red	Midnight Blue	Dark Brown Metallic	Medium Vanilla	Prized Vanilla	Vanilla Metallic	Dark Cordovan Metallic	Polar White	Medium Blue Glow*	Light Fawn Glow*	Medium Vaquero Glow*
Dark Red	1,2	2,4	2,4	1,2,5	6								2,5			
Vanilla	1,3							3,5	3	3,5			3,5			
Vaquero	1											5,8	5,8			1,5,8
Medium Fawn	1					5,7							5,7	5,7		
Midnight Blue						5,6							5,6	5,6		
Opal/Pewter	1,4	1,4	1,4										4,5			
Opal/Dark Red				2,5									2,5			
Opal/Midnight Blue						5,6							5,6	5,6		
Opal/Medium Fawn							5,7						5,7	5,7		
Opal/Vaquero												5,8	5,8			5,8

*Optional Glow colors.
VINYL ROOF COLORS: 1. Black, 2. Medium Red, 3. Vanilla, 4. Light Pewter, 5. White, 6. Midnight Blue, 7. Dark Brown, 8. Cordovan

Some of these paint and trim colors are shown in this catalog. On the printed page, of course, colors are at best only representative of the original. Your Ford Dealer can show you actual samples of the paint colors and trim materials presented above as well as Tu-Tone paint/l tape combinations. See Options Selector (pages 14-15) for available Tu-Tone paint schemes.

SCHEDULED MAINTENANCE

Ford wants to reduce both the frequency and cost of scheduled maintenance on its cars to an absolute minimum. Here are the scheduled maintenance intervals for the 1982 Thunderbird.

Engine Oil Change	each 7,500 miles
Spark Plug Change	each 30,000 miles
Air Filter Replacement	each 30,000 miles
Engine Coolant Replacement	each 52,500 miles or 3 years

GAS MILEAGE ESTIMATES

Projected Ford Division estimates for comparison. Your mileage may differ depending on speed, distance and weather. Actual highway mileage will probably be lower. See your Ford Dealer for his 1982 EPA Gas Mileage Guide.

24 EST. HWY. 18 EPA EST. MPG

30 EST. HWY. 18 EPA EST. MPG

*Estimates for 3.8 liter V-6 engine with Automatic Overdrive transmission. California: 30 est. hwy., 18 EPA est. mpg

TECHNICAL SERVICE BULLETINS

All vehicles need repairs during their lifetime. Sometimes Ford issues Technical Service Bulletins (TSBs) and easy-to-read explanations describing unusual engine or transmission conditions which may lead to costly repairs, the recommended repairs, and new repair procedures. Often a repair now can prevent a more serious repair later. Ask Ford or your dealer for any such TSBs and explanations relating to your Ford or Lincoln-Mercury vehicle.

To get copies of these Technical Service Bulletins and explanations for your vehicle or the vehicle of interest to you:

Call Ford toll-free at 1-800-241-3673. Alaska and Hawaii call 1-800-243-3711 and in Georgia call 1-800-282-0959.

Or write Ford at:
Ford Customer Information System
Post Office Box 95427
Atlanta, Georgia 30347.

We'll need your name and address; year, make, and model vehicle, as well as engine size; and whether you have a manual or automatic transmission.

"ASK YOUR FORD DEALER"

Following publication of this catalog, certain changes in standard equipment, options, prices and the like, may have occurred which would not be included in these pages. Your Ford Dealer is your best source for up-to-date information.

PRODUCT CHANGES

Ford Division reserves the right to change product specifications at any time without incurring obligations.

THUNDERBIRD OPTIONS SELECTOR



A



B



C

Thunderbird's list of options is extensive and varied. With the options you choose, you can add some of your own personality and flair to your new Thunderbird and contribute to its overall value at the same time.

Audio

- AM/FM Monaural Radio* (Dual front speakers and wiring for rear speakers are included with all monaural radios.)
- AM/FM Stereo Radio
- AM/FM Stereo Radio with Cassette Tape Player
- AM/FM Stereo Radio with 8-Track Tape Player
- Electronic AM/FM Stereo Search Radio
- Electronic AM/FM Stereo Search Radio with Cassette Tape Player and Dolby® Noise Reduction System (A)
- Electronic AM/FM Stereo Search Radio with 8-Track Tape Player
- Dual Rear Seat Speakers with fader control for monaural radios (included with all stereo radios)
- Premium Sound System.* For stereo radios. Includes 30-watt power amplifier (60-watt with Electronic Search Radios), upgraded rear speakers and two additional canted speakers in front door panels.

Appearance

- Rear Half Vinyl Roof*
- Luxury Vinyl Roof*
- Carriage Roof.* A simulated convertible top for a contemporary, sporty look.

Note: Some models include items listed here as standard equipment. See Notable Standard Features, pages 12 and 13.

- Exterior Decor Group. Rear half vinyl roof in Black, Medium Red, Cordovan, Vanilla, Midnight Blue, White, Dark Brown or Light Pewter; RH remote control mirror, bodyside paint stripes, luxury wheel covers and wide door belt moldings.
- Dual Accent Bodyside Paint Stripes
- Hood and Bodyside Accent Stripes
- Luxury Luggage Compartment Trim
- Tu-Tone Paint/Tape Treatment. Five Tu-Tone combinations: Black over Medium Pewter Metallic; Midnight Blue Metallic over Medium Blue Glow; Dark Brown Metallic over Light Fawn Glow; Pastel Vanilla over Medium Vanilla; Dark Cordovan Metallic over Medium Vaquero Glow. Includes tricolor bodyside tape stripes and 2-color hood and decklid stripes.

Assists/Electronic Driving Aids

- Autolamp On/Off/Delay System. On the road, turns on headlamps automatically at night, turns them off after sunrise. At home, provides an adjustable interval of light long enough to see you into the house.
- Diagnostic Warning Lights (see pages 10-11)
- Electronic Instrument Cluster (see pages 10-11)
- Tripminder® Computer (see pages 10-11)*

Comfort and Convenience (Interior)

- Electronic Digital Clock (see pages 10-11)*
- Dual Illuminated Visor Vanity Mirrors
- Light Group. Includes dual beam map light, instrument panel courtesy lights and engine compartment light.

- Automatic Parking Brake Release
- SelectAir® Conditioner with Automatic Temperature Control (B)
- Air Conditioner, manual control
- Tinted Glass (complete)
- RH Remote Control Mirror
- Fingertip Speed Control (C). Includes "resume" feature.
- Tilt Steering Wheel
- Leather-Wrapped Luxury Steering Wheel* (C)

Convenience (Exterior)

- Pivoting Front Vent Windows* (D)
- Flip-Up Open-Air Roof* (E). Can be removed completely for the feeling of a convertible or flipped up part way for more fresh air.
- Electric Rear Window Defroster*
- Illuminated Entry System. Included with Keyless Entry System.
- Front Cornering Lamps
- Keyless Entry System (see pages 10-11)*
- Interval Windshield Wipers

Interiors

- Interior Decor Group. Split bench seats with dual recliners in higher level knit cloth fabric (or bucket seats and console); Decor door trim panels with assist straps; 18-oz. floor carpeting; Coco Bola wood-tone instrument panel appliques; passenger visor vanity mirror; cloth-covered head restraints (vinyl with vinyl trim); armrest pads on quarter trim panels.
- Interior Luxury Group. Includes split bench seats with dual recliners in crushed velour cloth (ultra-soft leather trim optional); distinctive door and quarter trim inserts/moldings; cloth-covered head restraints (vinyl with optional ultra-soft leather trim); 18-oz. floor carpeting; burled rosewood woodtone instrument panel and door panel appliques;



D



E



F

G

H

luxury steering wheel; RH illuminated visor vanity mirror; electronic digital clock; light group; diagnostic warning lights; power side windows; automatic parking brake release; interval windshield wipers; tinted glass; luxury luggage compartment trim. ■ Bucket Seats/Console.* Vinyl trim. Not available with Heritage. ■ Recaro Bucket Seats/Console. Available with Interior Decor Group or Interior Luxury Group. ■ Split Bench Seats. In cloth and vinyl or all vinyl trim. Not available with Heritage, standard with Town Landau and included with Interior Decor Group. ■ Luxury Split Bench Seats. Available with Town Landau or Interior Decor Group. Standard with Interior Luxury Group and Heritage. ■ Vinyl Seat Trim. Available with standard flight bench seat.

Protection

■ Rocker Panel Moldings* ■ Front License Plate Bracket* ■ Wide Door Belt Moldings* ■ Lower Bodyside Protection ■ Appearance Protection Group. Includes color-keyed front carpet floor mats, bright door edge guards and license plate frame(s).

Power Assists

■ Power Radio Antenna* ■ Power Lock Group. Includes power door locks and remote control decklid release in glove box. ■ 6-Way Power Driver's Seat* ■ Power Side Windows (included in Interior Luxury Group)*

Tires

■ Puncture-Resistant Self-Sealing Tires ■ TR-Type (Wide-Oval Low-Profile) White Sidewall Radial Tires

(included with cast aluminum wheels)* ■ Conventional Spare Tire*

Wheels/Wheel Covers

■ **Luxury Wheel Covers*** (F). Included in Exterior Decor Group. ■ **Cast Aluminum Wheels*** (G). Include antitheft lug nuts and TR-type tires. ■ **Wire Wheel Covers*** (H)

Performance

■ Heavy-Duty Battery ■ Heavy-Duty/Handling Suspension.* Includes HD front and rear springs, HD front stabilizer bar, HD front strut valving and rear shock absorber valving. ■ High Altitude Emissions System ■ California Emissions System ■ 3.8 liter (232 CID) 2V V-6 Engine (VV with California Emissions System). (Includes the SelectShift automatic transmission with new locking torque converter, subject to delayed availability. Consult your Ford Dealer for details).* ■ 4.2 liter (255 CID) 2V V-8 Engine (VV with California Emissions System)* ■ Engine Block Immersion Heater ■ Automatic Overdrive Transmission (see pages 10-11)* ■ Traction-Lok Axle.* Under adverse operating conditions where one driving wheel could spin on ice, snow, sand or mud, the Traction-Lok automatically shifts some of the driving force, or torque, to the other wheel to take advantage of its better traction.

Also well worth considering . . .



Ford Motor Company's Extended Service Plan. This option covers major components on new Ford

cars and light trucks for longer than the vehicle's basic warranty. The Extended Service Plan's cost is so moderate for the protection you get that it could pay for itself the first time you need it. Your Ford Dealer will be happy to detail the plan for you. It is available on all Ford cars and light trucks sold and normally operated in all 50 United States and Canada.

Options Availability

This year you can save money on the options you select for your new Thunderbird by choosing one or more Value Option Packages. Pick Value Package No. 152A, for example, and two options—Fingertip Speed Control plus Tinted Glass—are included **at no extra charge**. There are 10 Thunderbird Value Option Packages in all, each offering you one or more no-extra-charge items when you buy the whole package. It's the smart, money-saving way to buy options—equipment items you'd probably select for your new Thunderbird anyway. Be sure to ask your Ford Dealer for all the details on Value Option Packages.

1982 Thunderbird options are not confined to these pages but are shown throughout the catalog. Options, whether or not they are identified, are offered at extra cost. Options designated by an asterisk (*) are offered either in combination with other options, or are subject to additional ordering requirements or limitations. Availability of some features described here and elsewhere may be subject to delay.

GO FOR A TEST DRIVE IN A 1982 THUNDERBIRD.

Buy or lease the new Thunderbird today.



THUNDERBIRD

FORD DIVISION

