

F O R D 1 9 9 2

F-Series



THE NEWEST F-SERIES IN YEARS.

No one knows more about trucks than Ford. We've been building them for seventy-five years.

Our reputation has been earned in every segment of the truck market: personal use, commercial, agriculture.

So it isn't surprising that Ford F-Series has the highest owner loyalty among trucks in its class.*

Through the years the F-Series has made quite a



name for itself. But you can't conclude that it's resting on its laurels.

On the contrary, the Ford F-Series for 1992 is the newest in years.

We kept all of what you traditionally look for in a truck in performance and off-road versatility. But we've added a lot of the comfort and styling you'd normally expect in a car. For example, we've

reshaped the front end and redesigned the instrument panel, making the 1992 F-Series more contemporary. And driver friendly.

This brochure covers the F-150 and F-250 in three trim levels—Custom, XL and the XLT Lariat (including the XLT Lariat "Nite" truck).

The F-250 HD, the F-350 and F-Super Duty are covered in the 1992 Ford Commercial Pickup and Chassis brochure.

Ford Pickups. Seventy-five years of toughness.

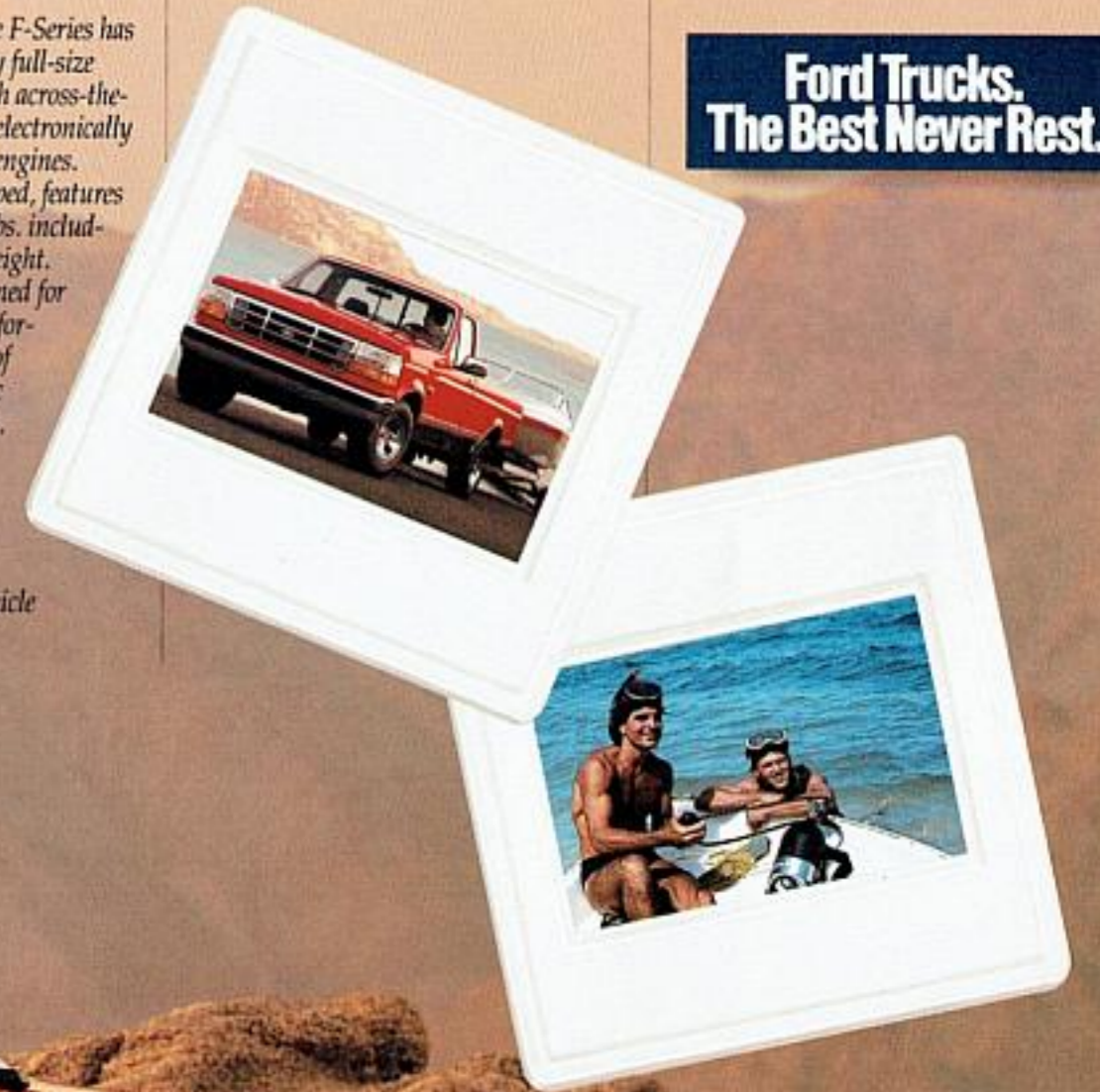
It's not surprising that the F-Series has the most loyal owners of any full-size pickup. It's the only one with across-the-board multi-port I-6 or V-8 electronically fuel-injected (EFI) gasoline engines.

The F-150, properly equipped, features a towing capacity of 7,700 lbs. including passengers and cargo weight.

The optional EAOD, designed for improved fuel efficiency, performance and shift-feel, is one of the most advanced electronic transmissions on the market.

**Based on the 1990 New Vehicle Buyer Survey.*

**Ford Trucks.
The Best Never Rest.™**



F-150 XLT Lariat in Bright Red over Dark Gray Metallic. Some equipment shown may be optional.



The F-150 XLT Lariat SuperCab interior, shown here in Dark Charcoal, includes standard air conditioning; door trim cloth insert and storage bin; rear cloth bench seat with 3-point outboard restraints; black, leather-wrapped steering wheel; Light/Convenience Group; plus electronic AM/FM stereo with digital clock. Options include sliding rear window; cloth Captain's Chairs with power lumbar support and center floor console. Some other items shown may be optional as well.

THE 1992 F-SERIES INTERIOR WAS REDESIGNED WITH ONE THING IN MIND—TO CHANGE THE WAY YOU LOOK AT TRUCKS.

When we redesigned the F-Series interior for 1992, we kept certain priorities in mind; we wanted to change the way you look at trucks.

We kept the items that have proven popular over the years—like pivoting vent windows, oil pressure and temperature gauges, voltmeter and optional tach.

But from the smart new instrument cluster to the optional electronic AM/FM stereo (with four-speakers) optional cassette player and digital clock, we gave it a more driver-friendly look and feel.

For instance, the new rotary heater and air conditioning controls are easy to reach. And easy to operate. Driving an F-Series is fun.

Starting with the best seats in the house, we've added power lumbar support to the Regular Cab XLT Lariat

flight bench seat and the optional SuperCab cloth Captain's Chairs.

Captain's Chairs for 1992 include a center console with built-in beverage, coin, cassette tape and map holders, plus ample room to store personal items.

Regular Cab bench seats include a detachable/removable mini-console as part of

the Light/Convenience Group option.

We took a look at how you live and added a Power Point electrical outlet accessory to the instrument panel. So you can plug in things like coffee pots or electric shavers during break time.

Finally, we've installed three-point outboard safety restraints on the SuperCab optional rear bench seat—something that won't go unappreciated.

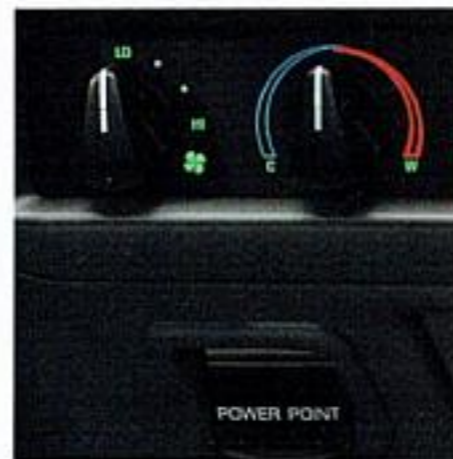


Controls to operate the optional power windows, power door locks and mirrors are conveniently located on the door-trim panel. A good example of the driver-friendly design of the 1992 F-Series.

Rotary heater and air-conditioning controls are easy to reach. And easy to operate.

New for '92, the standard Power Point accessory electrical outlet, mounted on the instrument panel, lets you plug in things like coffee pots and electric shavers during break time.

A black vinyl steering wheel is standard on the Custom and XL models. The XLT Lariat steering wheel is leather-wrapped in black.



The F-Series interior has been redesigned for 1992—giving it a more contemporary appearance. The XLT Lariat is pictured above in Dark Charcoal. Yet, we've kept the things that have proven popular over the years: full instrumentation, including oil pressure and temperature gauges, voltmeter, optional tachometer; plus pivoting vent windows. Some equipment shown on these pages may be optional.



The EAOD driver-activated overdrive cancel switch is mounted on the shift lever. This switch is designed to prevent upshift to the overdrive gear—a particularly useful feature in hilly terrain to obtain third gear engine braking on downgrades.

Also new for 1992, the removable mini-console is included as part of the optional Light/Convenience Group on the Regular Cab models—along with an under-hood light, front door map pockets and more.



THE F-SERIES
SUPERCAB FOR
1992 MAY LOOK
LIKE A TRUCK. BUT
WAIT UNTIL YOU
HEAR THIS.

The F-150 and F-250 are offered in two cab styles—Regular and SuperCab.

The Crew Cab is offered in the F-350 Series, covered in the 1992 Ford Pickups and Chassis brochure.

The most impressive thing about the SuperCab is not so much what it will store (although its 30 cubic feet of room behind the front seat is more than enough to hold things like luggage or golf clubs). But rather, what's in store for you.

For 1992 we've included four audio speakers to go along with the stereo system

of your choice, so you can enjoy the sound quality you've come to expect.

The extra roominess of a SuperCab allows for more effective speaker placement—helping your system perform the way it was designed to perform.

Bright, manual mirrors are standard along with a color-keyed cloth headliner and a fully trimmed rear seat area.

We've also added flush rear quarter glass. The new optional Captain's Chair power lumbar support, center console and rear bench seat outboard safety

restraints are covered on page six.

As a finishing touch for 1992, SuperCab is available with clearcoat paint, not only for appearance, but also to help provide improved protection from the effects of exposure to the sun.

Frames also get a special wax coating for improved corrosion protection.

If the SuperCab is a little too much cab, our best-selling Regular Cab is available in every trim level. For increased ventilation, choose the popular sliding rear window option.

F-150 XL in Bright Regatta Blue Metallic with forged aluminum deep-dish wheels.

F-350 DRW (dual rear wheel) Crew Cab. For information on the F-350 ask your Ford dealer for a copy of the 1992 Ford Pickup and Chassis brochure.



F-150 XLT Lariat SuperCab in Dark Grey Metallic over Medium Silver Metallic. Some equipment shown on these pages may be optional.





THE XLT LARIAT
"NITE" TRUCK.
AND THE F-150
FLARESIDE MODEL.
TWO BOLD
CHOICES FOR
1992.

F-150 Flareside (late availability) shown to the left in Iris over Silver Clearcoat Metallic. Some equipment shown on these pages may be optional.

Note: A special Flareside brochure will be available at introduction.

The 1992 Ford F-Series is like nothing that's come before it. Inside, outside, front and back—there are exciting new things to look at. Because, after all, haven't you been looking at trucks in whole new ways?

In addition to the Custom, XL and premium XLT Lariat, we offer the F-150 Flareside model (late availability). And the spirited XLT Lariat "Nite" truck—for those of you who are looking for something with a special appeal.

The short-wheelbase Flareside, with newly styled door steps plus pickup box with fenders and side steps, has a distinct look.

The XLT Lariat "Nite" truck is available in the Regular Cab or SuperCab, 4x2 or 4x4, with the 5.0L V-8 engine as standard.

It's dressed out in Raven Black, with special bodyside tape stripes and forged aluminum deep-dish wheels.

The well-equipped XL comes customer-ready with popular standard amenities like a chrome grille; bright, manual mirrors; forged aluminum deep-dish wheels; electronic AM/FM stereo and digital clock; color-keyed cloth headliner; cloth and vinyl front bench seat plus vinyl rear jump seats on the SuperCab.



Shown above, the F-150 XLT Lariat "Nite" truck in Raven Black with special bodyside tape stripes. The "Nite" model interior includes a choice of colors — Dark Charcoal, Scarlet Red or Crystal Blue; a sliding rear window; "Nite" nomenclature on the instrument panel and special "Nite" floor mats.



THE F-150 4x4 IS THE ONLY FULL-SIZE PICKUP OFFERING ELECTRIC TOUCH DRIVE.

The F-Series 4x4 is available in the F-150 Regular Cab and SuperCab.

Automatic locking hubs are standard. Manual hubs, popular with off-road enthusiasts, are optional—along with Electric Touch Drive, a Ford exclusive in a full-size pickup.

Automatic locking hubs are simple to operate. Stop the vehicle, then shift into 4-wheel drive high. The hubs are automatically locked as soon as the vehicle is driven.

An easy quarter turn of each front hub selector knob is all that's required to lock the hubs into 4-wheel drive.

With the hubs engaged, all three systems allow you to shift "on the fly" from 2-wheel drive to 4-wheel drive high and back again at normal road speeds.

F-150 4x4s include a standard 2-speed transfer case; a 5-speed manual overdrive transmission; a 4.9L EFI I-6 engine; an optional 5.0L EFI

F-150 XLT Lariat in Raven Black and graduated Silver Graphic with optional Sport Appearance Package B. See page 15 for Package contents. Rally bar is not designed for occupant protection.

V-8 (standard in the "Nite" truck); an optional 5.8L EFI V-8 engine; Twin-Traction Beam front suspension; power steering; power brakes with rear anti-lock plus 3,800-lb. axles.



"Tread Lightly" is an educational program designed to increase public awareness of land-use regulations and responsibilities in our nation's wilderness areas. Ford joins the U.S. Bureau of Land Management in encouraging you to help preserve our national forests and other public and private lands by "treading lightly."



Electric 4x4 Touch Drive allows you to shift "on the fly" from 2-wheel drive to 4-wheel drive high and back again at normal road speeds at the touch of a button.



F-150 XLT Lariat 4x4 in Bright Red with forged aluminum deep-dish wheels, sliding rear window and bright manual mirrors. Some equipment shown on these pages may be optional.



Success in racing demands the best we can give. There's no other way to win. In winning with race-prepared Fords, we apply the same formula for success that has made the Ford F-Series the most owner-loyal pickup in America.

Note: the specially modified racing vehicle shown is operated by professional drivers in sanctioned competition.

Shown from left to right: argent-styled steel wheel with blackwall tire; forged aluminum deep-dish wheel with P265 tire (late availability); and chrome-styled steel wheel with OWL (outlined white letters) tire.



The step bumper option, shown above, makes it easy to access your pickup bed.



For increased ventilation, the sliding rear window has been a popular F-Series option.

REGULAR CAB COLORS AND TRIMS

Exterior Paint Colors	Interior Trim Colors			
	Crystal Blue	Scarlet Red	Dark Charcoal	Medium Mocha
Custom, XL, XLT Lariat				
Light Mocha		■		■
Medium Mocha Metallic				■
Dark Mocha Metallic				■
Cabernet Red		■	■	
Bright Red		■	■	
Medium Silver Metallic		■	■	
Dark Grey Metallic		■	■	
Bright Regatta Blue Metallic	■		■	
Deep Shadow Blue Metallic	■		■	
Emerald Green Metallic			■	■
Raven Black		■	■	■
Colonial White		■		■
Oxford White	■	■	■	

Note: Ask your Ford dealer for available two-tone combinations; and for Sport Appearance Package and Flareside paint colors.



PRODUCT CHANGES

Following publication of this catalog, certain changes in standard equipment, options, prices and the like, or product delays, may have occurred which would not be included in these pages. Your Ford dealer is your best source of up-to-date information.

Ford Division reserves the right to change product specifications at any time without incurring obligations.

The optional electronic AM/FM stereo radio with cassette player and digital clock is available on every F-Series trim level.

F-150 REGULAR CAB STYLESIDE PREFERRED EQUIPMENT PACKAGES AND OPTIONS

Note: Package content is subject to change.
X = Included in Package S = Standard O = Optional

	Custom 500A	XL 502A	XLT "Nite" 506A	XLT Lariat 507A
Seating				
Vinyl bench	S			
Cloth and vinyl bench	O	S		
Knitted vinyl bench	O	O	O	O
Cloth light bench (including power lumbar)			S	S
Appearance/Comfort/Convenience				
Air conditioning	O	O	X	S
Sliding rear window	O	O	S	O
Chrome rear step bumper	O	O		O
Argent rear step bumper	O	O		
Power door locks/windows		O	O	X
Light and Convenience Group (1)	O	O	X	S
Speed control and tilt steering wheel	O	O	O	X
Tachometer	O	O	X	O
Electronic AM/FM stereo radio with cassette player and digital clock	O	O	O	O
Electronic AM radio with clock	S			
Electronic AM/FM stereo radio with digital clock	O	S	S	S
Bright electric mirrors		O		O
Bright manual mirrors	S	S		S
Bright low mount swingaway mirrors	O	O		O
Bright swingout recreational mirrors	O	O		O
Sport wheel covers	O			
Forged aluminum deep dish wheels	O	X	S	O
Argent-styled steel wheels	O	O		O
Chrome-styled steel wheels	O	O		X
Headliner and Insulation Package	O	S	S	S
Skid plates (4x4)	O	O	O	O
Sport Appearance Package A or B (2)	O	O		O
Roof clearance lights	O	O		O
Bodyside two-tone paint	O	O		O
Deluxe two-tone paint	O	O		O
Lower accent two-tone paint				O
Dual bodyside paint stripe			O	
Powertrains And Equipment				
4.9 EFI I6 with 5-speed manual overdrive transmission	S	S		S
4.9L EFI I6 with 4-speed manual transmission	O	O		O
4.9L EFI I6 with 4-speed electronic automatic overdrive transmission	O	O		O
5.0L EFI V8 with 5-speed manual overdrive transmission	O	O	S	O
5.0L EFI V8 with 4-speed manual transmission	O	O	O	O
5.0L EFI V8 with automatic overdrive transmission	O	O	O	O
5.0L EFI V8 with electronic 4-speed automatic overdrive transmission	O	O	O	O
5.8L EFI V8 with electronic 4-speed automatic overdrive transmission	O	O	O	O
Manual locking hubs (4x4)	O	O	O	O
Electronic, Touch Drive (4x4)	O	O	O	O
Limited slip front axle (4x4)	O	O	O	O
Single fuel tank	O	O	O	O
Heavy-duty battery	O	O	O	O
Super engine cooling	O	O	O	O
Engine block heater	O	O	O	O
Handling And Towing				
Camper/Trailer Towing Package (3)	O	O	O	O
Heavy-duty Front Suspension Package (4x4) (4)	O	O	O	O
Heavy-duty Rear Suspension Package (5)	O	O	O	O
Handling Package (6)	O	O	S	O

(1) Includes underhood and dual beam dome/map light; headlights on audible alert; map pocket in door trim panel; visor vanity mirror and mini-console. (2) Package A includes graduated silver bodyside and tailgate tape stripes w/matching tailgate letter tape; forged aluminum deep-dish wheels; five, P235/75R x 15XL BSW all-season tires (4x2) or five, P265/75R x 15XL OWL all-season tires (late availability) (4x4). Package B includes in addition: black steel tubular rear bumper; black steel rally bar (not intended for occupant protection); halogen off-road lamps and 80-amp alternator. (3) Includes super engine cooling; bright, low-mount swingaway mirrors; trailer wiring harness; h/d turn signal flasher; Handling Package and h/d battery. (4) Includes h/d front springs (3,800lb. GAWR) and shock absorbers; minimum 3.55 rear axle ratio and h/d frame. (5) Includes h/d front and rear shock absorbers and 400lb. capacity auxiliary rear springs. (6) Includes front/rear stabilizer bars; h/d front springs (4x2); h/d shock absorbers and quad front plus h/d rear shock absorbers (Regular cab 4x4).

MAJOR STANDARD FEATURES

Exterior

Aero-halogen headlamps with impact-resistant lenses
Tinted glass, all around
Wraparound front parking/turn signal lamps
Bright manual mirrors
Removable tailgate with bright handle
Wraparound taillamps

Interior

Air conditioning (XLT Lariat)
Color-keyed door trim panels
Color-keyed cloth headliner (XL, XLT Lariat)
Instrumentation: voltmeter, oil pressure and temperature gauges w/indicator lights
Power Point electrical accessory outlet
Light/Convenience Group (XLT Lariat)
Vent windows
Leather-wrapped steering wheel (XLT Lariat)
Interval wipers

Functional

TwinBeam front axle (4x2)
Twin-Traction Beam front axle (4x4)
Maintenance-free battery (72AH 650 C.C.A.)
Power brakes, w/rear anti-lock
4.9L EFI I6 engine
5-speed manual overdrive transmission
Automatic locking front hubs (4x4)
Gas pressurized shock absorbers
Power steering
Two-speed transfer case (4x4)
Five P215/75R x 15 SL BSW All-season tires (Regular Cab 4x2) *
Five P235/75R x 15XL BSW All-season tires (SuperCab 4x2, 4x4) *
Five 6.0J 5-hole wheels
2,300lb. front springs (4x2 Regular Cab SWB)
2,725lb. front springs (4x2 SuperCab SWB)
2,525lb. front springs (4x4 Regular Cab SWB)
3,100lb. front springs (4x4 SuperCab SWB)
3,190lb. rear springs (4x2 Regular Cab)
3,800lb. rear springs (4x2 SuperCab)
3,776lb. rear springs (4x4 Regular Cab)
3,777lb. rear springs (4x4 SuperCab)

*See your Ford dealer for a complete list of tires.

F-150 TRIM CONTENT

● = Standard

Exterior	Custom	XL	XLT Lariat
Chrome front bumper	●	●	●
Black rub strip		●	●
Cargo box light	●	●	●
Tinted glass	●	●	●
Argent grille	●		
Chrome grille		●	●
Aero-halogen headlamps with impact-resistant lenses	●	●	●
Wraparound front parking/turn signal lamps	●	●	●
Bright manual RH/LH mirrors	●	●	●
Removable tailgate with bright release handle	●	●	●
Wraparound taillamps	●	●	●
Argent steel wheels with bright hub caps	●		
Forged aluminum deepdish wheels		●	
Argent-styled steel wheels			●
Interior			
Air conditioning			●
Color-keyed carpet			●
Color-keyed door trim panel with black handles and reflector	●	●	●
Cloth door panel insert, storage bin and courtesy light reflector			●
Carpeted map pockets		●	●
Color-keyed floor mat	●	●	
Color-keyed cloth headliner	(1)	●	●
Color-keyed instrument panel with glove box lock, side window demisters, four air registers and black applique	●	●	●
Voltmeter, oil pressure and temperature gauges with indicator lights	●	●	●
Light/Convenience Group			●
Power Point electrical accessory outlet	●	●	●
Electronic AM radio with digital clock and two door-mounted speakers	●		
Electronic AM/FM stereo with digital clock and four speakers		●	●
Vinyl bench seat (knitted vinyl on SuperCab)	●		
Cloth and vinyl bench seat		●	
Cloth bench seat (flight bench with power lumbar on Regular Cab)			●
Vinyl rear jump seats (SuperCab)	●	●	
Cloth rear bench (SuperCab)			●
Leather-wrapped steering wheel			●
Vent windows	●	●	●
Interval wipers	●	●	●

(1) SuperCab only.

F-150/250 4x2

GVWR (max. lbs.)	F-150	6,250 Regular Cab; 6,250 SuperCab
	F-250	6,600 Regular Cab
Front axle (max. lbs.)	F-150	3,400 Regular Cab; 3,400 SuperCab
	F-250	3,900 Regular Cab
Rear axle (max. lbs.)	F-150	3,800 Regular Cab; 3,800 SuperCab
	F-250	5,300 Regular Cab
Springs, front		Coil
rear		2-stage leaf, variable rate
		Opt. HD front and auxiliary rear springs. See your Ford dealer.
Shock absorbers		Gas-pressurized
Battery		Std. 72 amp/hr; Opt. 84 amp/hr
Alternator		60 amps; 75 amps w/air conditioning or V8 engine
Engine		Std. 4.9L EFI I6
		Opt. 5.0L EFI V8; 5.8L EFI V8
Transmission		Std. 5-speed manual O/D
		Opt. 4-speed manual; 4-speed auto O/D (AOD) [F-150 only]; 4-speed auto O/D (E4OD)
Fuel capacity		Std. 34.7 gals SWB F-150; 37.2 gals. IWB F-150/F-250
		Opt. 18.2 gals. SWB F-150 Regular Cab
		Opt. 18.2 gals. F-250 Regular Cab
Steering		Power
Brakes		Power front disc and rear drum with rear antilock system
Wheels, type/rim size		5-hole/6J; F-150; 8-hole/7K; F-250
Tires, tubeless		P215/75R158L F-150 Regular Cab
		P235/75R158L F-150 SuperCab
		1T215/85R16D F-250 Regular Cab
		Opt. tires are available to match payload package requirements. See your Ford dealer.

HD = Heavy Duty.

EXTERIOR DIMENSIONS

Cab type	Series	WB (in.)	Box ht* (ft.)	IW (in.)	4x2		4x4		OAL*
					LH #	CH #	LH #	CH #	
Styleside Pickup									
Regular Cab	F-150	117	6 3/4	70	30.2	70.8	33.5	73.7	197.1
	F-150	133	8	70	30.2	70.8	33.5	73.7	213.3
	F-250	133	8	70	32.5	73.4	—	—	213.3
SuperCab	F-150	139	6 3/4	70	30.7	71.7	33.4	73.9	219.1
	F-150	155	8	70	30.7	71.7	33.4	73.9	235.3

*Nominal. #Estimated in inches empty; see your Ford dealer for details. +Without rear bumper; add 4.5" for optional rear step bumper.



F-150 4x4

GVWR (max. lbs.)	F-150	6,250 Regular Cab; 6,250 SuperCab
Front axle (max. lbs.)	F-150	3,800 Regular Cab; 3,800 SuperCab
Rear axle (max. lbs.)	F-150	3,800 Regular Cab; 3,800 SuperCab
Springs, front		Coil
rear		2-stage leaf, variable rate
		Opt. HD front and auxiliary rear springs. See your Ford dealer.
Shock absorbers		Gas-pressurized (HD optional)
Front hubs		Std. auto locking
		Opt. manual locking
		Opt. auto locking with Electronic Touch Drive
Battery		Std. 72 amp/hr.; Opt. 84 amp/hr.
Alternator		60 amps; 75 amps w/air conditioning or V8 engine
Engine		Std. 4.9L EFI I6
		Opt. 5.0L EFI V8; 5.8L EFI V8
Transmission		Std. 5-speed manual O/D
		Opt. 4-speed manual; 4-speed auto O/D (AOD); 4-speed auto O/D (E4OD)
Fuel capacity (gals.)		Std. 18.2 SWB Regular Cab
		34.7 SWB SuperCab; 37.2 IWB
		Opt. 18.2 IWB Regular Cab
Steering		Power
Brakes		Power front disc and rear drum with rear antilock system
Wheels, type/rim size		5-hole/6J
Tires, tubeless		P235/75R158L
		Opt. P265/75R158L (late availability)
		Opt. tires are available to match payload package requirements. See your Ford dealer.

HD = Heavy Duty.

F-SERIES PAYLOAD PACKAGE SELECTOR

Regular Cab	Package No.	Payload*	GVWR**	Tires (Min.)
Styleside				
F-150 4x2 Short Bed	1	1,405/1,540 [†]	5,250	P215/75R x158L
F-150 4x2 Long Bed	1	1,495/1,640 [†]	5,450	P215/75R x158L
F-150 4x2 Long Bed	2	2,285/2,435 [†]	6,250	P235/75R x158L
F-250 4x2 Long Bed	1	2,385/2,530 [†]	6,600	1T215/85R x 16D
F-150 4x4 Short Bed	1	2,100	6,100	P235/75R x 158L
F-150 4x4 Long Bed	1	2,010/2,155 [†]	6,250	P235/75R x 158L
SuperCab	Package No.	Payload*	GVWR**	Tires (Min.)
F-150 4x2 Short Bed	1	1,830	6,050	P235/75R x 158L
F-150 4x2 Long Bed	1	1,915	6,250	P235/75R x 158L
F-150 4x4 Short Bed	1	1,820	6,100	P235/75R x 158L
F-150 4x4 Long Bed	1	1,670	6,250	P235/75R x 158L

*Maximum allowable weight of people, cargo and body equipment in pounds. **Gross Vehicle Weight Rating in pounds. [†]With single fuel tank option.



6-YEAR/100,000-MILE CORROSION PROTECTION

Corrosion warranty coverage for outer body panel rust-through is 6 years or 100,000 miles, whichever comes first. See your Ford dealer for a copy of this limited warranty.



Optional Ford Extended Service Plans are available to cover major components on new Ford cars and light trucks for longer than the vehicle's basic limited warranty. Your Ford dealer has full details.

MOTORCRAFT REPLACEMENT PARTS

Genuine Ford and Motorcraft original equipment replacement parts meet the same high standards as those installed in production.



Ford Credit's Red Carpet Lease® program makes driving a new Ford even

more pleasurable. With it, qualified lessees can drive a new car or truck every few years, and can generally select a more expensive vehicle (or one with more options) at a lower monthly payment.

See your dealer today for details on the Red Carpet Lease.

OPTIONS AVAILABILITY

Options shown or described in this catalog are available at extra cost and may be offered only in combination with other options or subject to additional ordering requirements or limitations.

