



SABLE GRAND MARQUIS COUGAR TRACER TOPAZ CAPRI



19

92

It's hard to imagine that Sable could be even more pleasing to the eye than before. Yet it is. Pictured here is the Sable LS in Opal Grey Clearcoat Metallic. Some features shown may be optional.

Drivers are our favorite people. Which is why Sable's all-new instrumentation and controls are carefully designed around the way a driver drives.



Remember the first time you ever saw a Mercury Sable?

You'd heard about it. Maybe even read about it in one of the car magazines. Then one day you're cruising along in traffic and suddenly there it was. Unmistakably.

And maybe your pulse did a little dance.

"...so slick...you could take a microscope to the Sable's surface and see those oxygen molecules tumbling right off, ..." one car expert wrote. And you would have agreed a hundred percent.

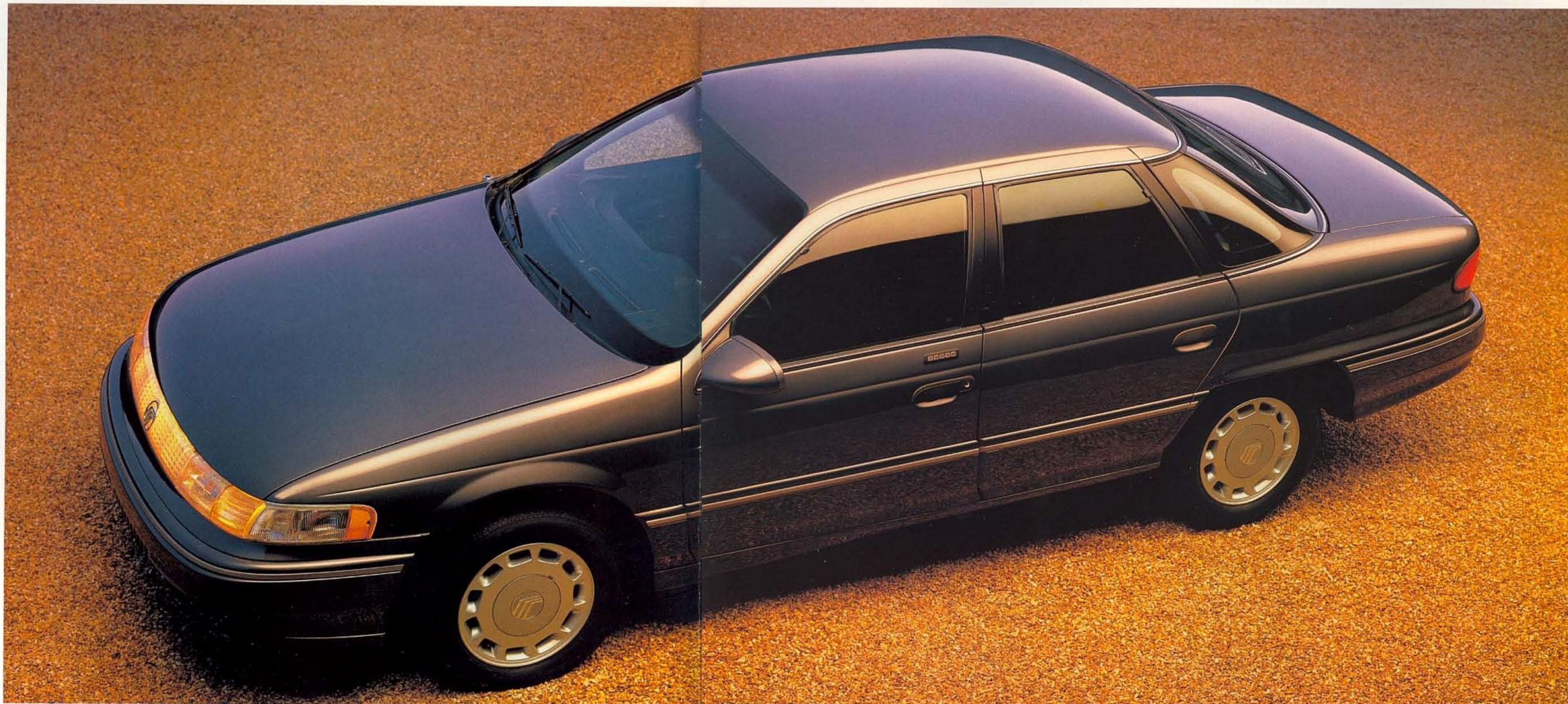
Lots of people went on to discover that Sable drove as good as it looked and bought one.

Lots of people who wouldn't consider themselves leading-edge types bought a leading-edge car.

Because it was right. Now we're making improvements and refinements to make it even more right. To make it even more lavish in its luxuries. Even more generous in its comforts.

Because we want Sable to keep its leading edge. And we want to make your pulse dance. Introducing the new 1992 Mercury Sable GS and LS Sedan and Wagon.

Sable Wagon has been improved and refined to keep its leading edge, just like Sable Sedan. Pictured here is the Sable LS Wagon in Dark Cranberry Clearcoat Metallic. Some features shown may be optional.



If you want the true measure of a car's worth, take a trip down an endless highway.

The 1992 Mercury Grand Marquis is a full-sized sedan that's made for the open road. It offers all the room, ride and comfort in the classic

Grand Marquis tradition, coupled with a dramatic design and advanced technology that make this the grandest Grand Marquis ever.

Outside, its sleek shape is both elegant in appearance and intelligent in

application. Inside, this uncompromising sedan is generously spacious, more quiet, more comfortable and even smoother riding than the car it replaces. Both driver and passengers will appreciate these features

whether traveling around the corner or across the country.

This Grand Marquis includes a number of features that make it the perfect car for people who want to get the most out of spending their time, and their

vacations, behind the wheel of a great automobile. It has a powerful yet efficient V-8 engine. Safety features like a standard driver-side air bag Supplemental Restraint System, standard four-wheel disc brakes and an optional

Anti-lock Brake System (ABS) with electronic traction assist. And it's available in two stylish sedans for 1992: a GS model and the top-of-the-line LS model.

Get a sense of how comfortable you'll feel

traveling the scenic route. Take a trip in a 1992 Grand Marquis.



Grand Marquis LS offers spacious six-passenger room and comfort, pictured here with optional Cranberry leather seating surfaces. Other equipment shown may be optional. Front safety belt not shown in order to provide a clear view of the interior. Always wear the safety belts.

Grand Marquis' sleek shape and flush side glass are more than just for appearance's sake: they contribute to busbed interior sound levels at highway speeds. Pictured here is the Grand Marquis LS in Medium Cranberry Clearcoat Metallic. Some features shown may be optional.

Picture a day without hours. And a road that twists and tunnels its way through a cool, green arch of trees. Imagine a car that sweeps you along this pleasant byway almost as effortlessly as the wind. Surrounding

you with numberless comforts. Answering your touch at the controls with self-assured swiftness.

You've discovered the very essence of Mercury Cougar.

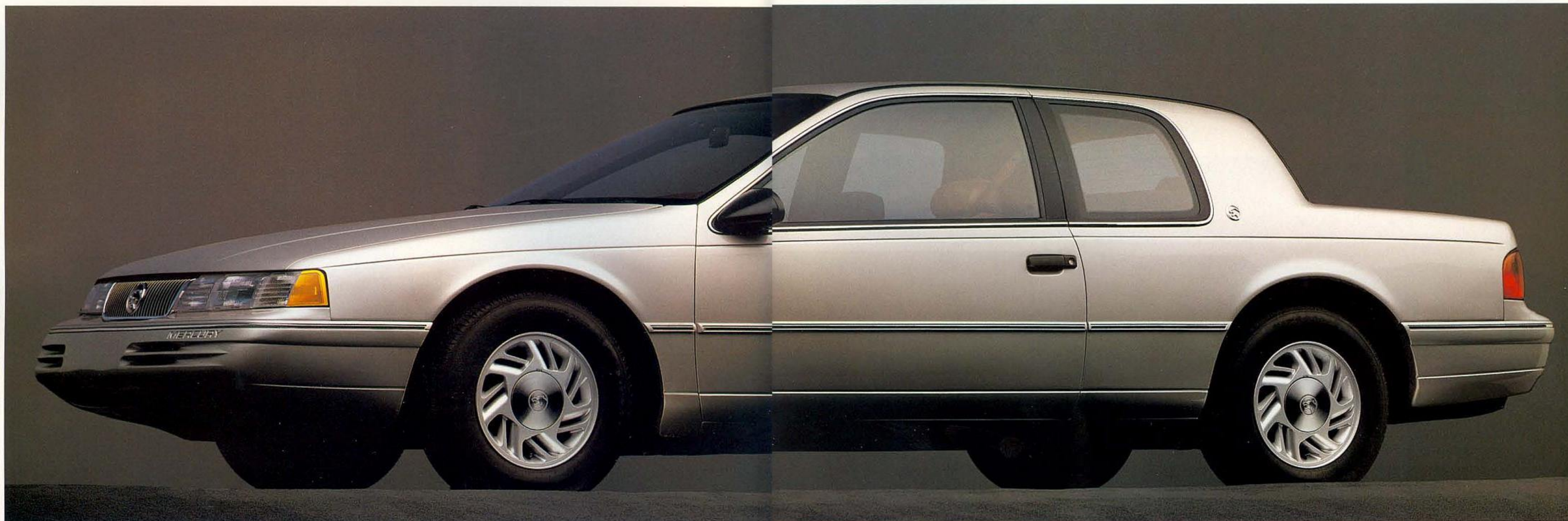
Both the Cougar LS

and the even more abundantly powered Cougar XR7 are long-distance touring coupes in the best traditions of the term. Able to shrink vast stretches of geography down to pleasure trips. And bringing sheer joy to

driving those back roads where nature's best scenery always seems to be hidden.

Add to this, styling that's not only beautiful, but highly distinctive. And a wealth of impressive automotive technology. If all this begins

to sound like you and Cougar should become better acquainted, it's time to pay a visit to your Lincoln-Mercury dealer.



Cougar LS has a longer wheelbase and wider track than any of its competitors, dimensions which contribute to its exceptional smoothness and handling. It's pictured here in Silver Clearcoat Metallic. Some features shown may be optional.

With V-8 power, computer-controlled four-wheel independent suspension and anti-lock brakes, Cougar XR7 has the technology to put you in one of the most enviable driver's seats on the road. It's pictured here in Black Clearcoat. Some features shown may be optional.



A big idea is sometimes a collection of smaller ones.

Ingenious little triumphs of design. Unseen but inspired solutions to vexing problems. A sudden insight that enables things to be done differently. Better. Combined, they can become a larger idea that adds to the ease and comfort of our lives.

Mercury Topaz is like that. It's a car full of fresh,

uncompromised, intelligent ideas. And that may well be what makes Topaz a rarity among today's profusion of automobiles. It's a car that simply does everything well.

It handles families with an easy assurance. And it handles a tight turn the same way. It treats budgets with care and doesn't complain about the weather.

You can find any number of good, solid reasons

to own a Topaz. And now there's one more you can add to the list: Topaz is available with the added punch of a 3.0-liter V-6 engine. It's standard on LTS and XR5 models, and optional on GS and LS models.

Unlike some cars, you'll grow to like Topaz even more after the novelty wears off. And that's a big idea all by itself.



Topaz LS is loaded with standard amenities typically found in automobiles with luxury nameplates. It's pictured here in Deep Bay Blue Metallic. Some features shown may be optional.



A 3.0-liter V-6 engine is just one of the many standard features you'll find on Topaz LTS, pictured here in Titanium Frost Clearcoat. Some features shown may be optional.

Chances are if you're reading this, you've made the decision to buy a new car. And now the real decisions start.

How much car do you want? How much car do you need? How much can you afford? Does it have enough room? Will you get your money's worth? Will you enjoy it?

Which brings us to the new 1992 Mercury Tracer. Even though it's small enough outside to squeeze into a tight parking space,

Tracer is roomy enough inside to seat five adults with plenty of trunk room to spare. It's fun to drive. Well-powered, yet economical. And not to be overlooked, Tracer looks good.

One more thing. Tracer is designed and built by a lot of people who really want you to like it. In fact, they want you to like it as much or more than any car in its class, built anywhere in the world. They spent a lot of time, money and effort to

impress you with Tracer's quality. They even learned to build Tracer with sophisticated techniques that a lot of car manufacturers just don't have.

Tracer comes in three different models: four-door notchback sedan, a performance-tuned 16-valve LTS (Luxury Touring Sedan) and a versatile wagon. Choose the one that makes the most sense for you. Then ask your dealer for a test drive. You've waited long enough.

Tracer Wagon pictured in Oxford White. Some features shown may be optional.



Tracer pictured in Light Titanium Clearcoat Metallic. Some features shown may be optional.



Tracer LTS offers a dual-overhead-cam, 16-valve, electronic multi-port fuel-injected engine that produces 127 horsepower. Tracer LTS is pictured here in Black. Some features shown may be optional.

Meet the perfect place to spend summer. The 1992 Mercury Capri. This 16-valve, dual-overhead-cam, fuel-injected convertible comes equipped with front-wheel drive, a 5-speed manual overdrive transaxle, power-assisted rack-and-pinion steering, driver-side air bag Supplemental Restraint System, four-wheel independent suspension, four-wheel disc brakes and other fun features. You can even get an optional removable hardtop.

You'll find Capri has what you need to let the good times roll. Its 2+2 seating arrangement lets you bring as many as three fellow sun worshippers along for the ride. The trunk offers up to 6.2 cubic feet of storage space. And with the top up you can fold the rear seat down to create extra room for anything from skis to 6-foot party subs to an ample supply of tanning lotion.

If you like your sun in a hurry, choose Capri XR2. It has a turbocharged, 1.6-liter, 16-valve, DOHC fuel-injected engine producing 132 horsepower. And performance-tuned independent suspension for when life throws you a few curves.



Capri's 2+2 seating arrangement lets you bring up to three fellow sun worshippers along for the ride. It is pictured here in Cardinal Red with Grey interior.

The turbocharged Capri XR2 is pictured here in Everglade Green.



SABLE**FRONT ENGINE/FRONT-WHEEL DRIVE****ENGINES**

Type	3.0L V-6 60 degree OHV	3.8L V-6 90 degree OHV w/balance shaft
Displacement	3.0 liters	3.8 liters
Horsepower (SAE net)	135 @ 4800 rpm	140 @ 3800 rpm
Torque (SAE net)	165 lb-ft @ 3000 rpm	215 lb-ft @ 2200 rpm
Fuel delivery	Sequential multi-port electronic fuel injection	
Compression ratio	9.3:1	9.0:1
Engine control	EEC-IV, electronic engine control	

TRANSAXLE

Type	Electronically controlled four-speed automatic overdrive with torque converter lock-up in third and fourth gears
------	--

SUSPENSION

Front	Independent MacPherson nitrogen gas-pressurized struts with coil springs, tension struts, stabilizer bar and lower control arm (sedan and wagon)
Rear	Sedan—Independent parallel four-bar arm design, nitrogen gas-pressurized struts, stabilizer bar and coil springs Wagon—Independent short and long arm, nitrogen gas-pressurized shocks, stabilizer bar and variable-rate coil springs

STEERING

Type	Speed-sensitive, variable assist power rack-and-pinion
------	--

**DIMENSIONS
(in inches)**

	SEDAN	WAGON
Wheelbase	106.0	106.0
Overall length	192.2	193.3

EXTERIOR COLORS

Oxford White • Crystal Blue Frost Clearcoat • Medium Mocha Clearcoat Metallic • Mocha Frost Clearcoat • Black Clearcoat • Dark Cranberry Clearcoat Metallic • Medium Cranberry Clearcoat Metallic • Dark Plum Clearcoat Metallic • Royal Blue Clearcoat Metallic • Regatta Blue Clearcoat Metallic • Caribbean Green Clearcoat Metallic • Opal Grey Clearcoat Metallic • Silver Clearcoat Metallic

INTERIOR COLORS

Ebony* • Crystal Blue • Opal Grey • Mocha • Cranberry

*Not available on Sable wagon models.

PRODUCT CHANGES

Following publication of this catalog, certain changes in standard equipment, options, prices and the like, or product delays, may have occurred which would not be included in these pages. Your Lincoln-Mercury dealer is your best source for up-to-date information.

Lincoln-Mercury Division reserves the right to change product specifications at any time without incurring obligations.

GRAND MARQUIS**FRONT ENGINE/REAR-WHEEL DRIVE****ENGINE**

Type	V-8 SOHC
Displacement	4.6 liters
Horsepower (SAE net)	190 @ 4200 rpm 210 @ 4600 rpm (with Trailer Tow III or performance and handling package)
Torque (SAE net)	260 lb-ft @ 3200 rpm 270 lb-ft @ 3400 rpm (with Trailer Tow III or performance and handling package)
Fuel delivery	Sequential multi-port electronic fuel injection
Compression ratio	9.0:1
Engine control	EEC-IV, electronic engine control

TRANSMISSION

Type	Four-speed automatic overdrive with 100 percent lockup in fourth gear. No scheduled maintenance
------	---

SUSPENSION

Front	Independent SLA with ball joints, anti-dive control geometry, coil springs, nitrogen gas-pressurized shocks and stabilizer bar
Rear	Four-bar link, rubber-cushioned pivots, rubber-insulated coil springs, nitrogen gas-pressurized shocks and stabilizer bar

STEERING

Type	Speed-sensitive, variable assist power steering
------	---

**DIMENSIONS
(in inches)**

	SEDAN
Wheelbase	114.4
Overall length	212.4

EXTERIOR COLORS

Black Clearcoat • White Clearcoat • Titanium Frost Clearcoat • Medium Titanium Clearcoat Metallic • Dark Cranberry Clearcoat Metallic • Medium Cranberry Clearcoat Metallic • Regatta Blue Clearcoat Metallic • Crystal Blue Frost Clearcoat • Amethyst Frost Clearcoat • Twilight Blue Clearcoat Metallic • Mocha Frost Clearcoat • Medium Mocha Clearcoat Metallic

INTERIOR COLORS

Ebony • Light Titanium • Shadow Blue • Cranberry • Mocha

COUGAR**FRONT ENGINE/REAR-WHEEL DRIVE****ENGINES**

	LS	XR7
Type	V-6 V-8 (opt.)	V-8
Displacement	3.8 liters	5.0 liters
Horsepower (SAE net)	140 @ 3800 rpm	200 @ 4000 rpm
Torque (SAE net)	215 lb-ft @ 2400 rpm	275 lb-ft @ 3000 rpm
Fuel delivery	Sequential multi-port electronic fuel injection	Sequential multi-port electronic fuel injection
Compression ratio	9.0:1	9.0:1
Engine control	EEC-IV, electronic engine control	EEC-IV, electronic engine control

TRANSMISSION

Type	Four-speed automatic overdrive, fourth-gear overdrive reduces engine speed by one-third to improve highway fuel economy
------	---

SUSPENSION

Front	Long spindle SLA with upper "A" arm, lower arm, tension strut, stabilizer bar, variable rate coil springs, nitrogen gas-pressurized hydraulic shock absorbers (automatic/firm adjustable on XR7), front sub-frame
Rear	Independent with lower "H" arm, upper arm, stabilizer bar, variable rate coil springs, nitrogen gas-pressurized hydraulic shock absorbers (automatic/firm adjustable on XR7), rear sub-frame

STEERING

Type	Power-assist rack-and-pinion (LS); electronic speed-sensitive, variable-assist standard on XR7, and LS with optional 5.0-liter engine in conjunction with luxury trim option
------	--

DIMENSIONS (in inches)

Wheelbase	113.0
Overall length	199.9

LS EXTERIOR COLORS

Oxford White • Black Clearcoat • Mocha Frost Clearcoat • Electric Red Clearcoat Metallic • Crystal Blue Frost Clearcoat • Twilight Blue Clearcoat Metallic • Bright Red Clearcoat • Cayman Green Clearcoat Metallic • Dark Plum Clearcoat Metallic • Opal Grey Clearcoat Metallic • Silver Clearcoat Metallic

XR7 MONOCHROMATIC EXTERIOR COLORS

Black Clearcoat • Electric Red Clearcoat Metallic • Oxford White • Mocha Frost Clearcoat** • Silver Clearcoat Metallic**

INTERIOR COLORS

Ebony • Titanium • Mocha • Currant Red*** • Crystal Blue***

**Late availability.

***Not available on XR7.

TRACER

FRONT ENGINE/FRONT-WHEEL DRIVE

ENGINES	SEDAN/ WAGON	LTS SEDAN
Type	Single over- head cam Inline-4	Double overhead cam 16-valve Inline-4
Displacement	1.9 liters	1.8 liters
Horsepower (SAE net)	88 @ 4400 rpm	127 @ 6500 rpm
Torque (SAE net)	108 lb-ft @ 3800 rpm	114 lb-ft @ 4500 rpm
Fuel delivery	Sequential multi- port electronic fuel injection	Multi-port electronic fuel injection
Compression ratio	9.0:1	9.0:1
Engine control	EEC-IV, elec- tronic engine control	Electronic control unit

TRANSAXLES

Manual	Synchronized five-speed overdrive with self-adjusting hydraulic clutch
Automatic	Electronically controlled 4-speed overdrive with lock-up torque converter for improved highway fuel economy

SUSPENSION

Front	Independent MacPherson struts with strut-mounted coil springs and stabilizer bar
Rear	Independent MacPherson struts, strut-mounted coil springs and stabilizer bar

STEERING

Type	Rack-and-pinion with 23.7:1 ratio on Tracer Sedan. Power-assisted rack-and-pinion with 17.0:1 ratio on Tracer Wagon and LTS (optional on Tracer Sedan). Curb-to-curb turning diameter, 31.5 ft.
------	---

DIMENSIONS (in inches)

	SEDAN AND LTS	WAGON
Wheelbase	98.4	98.4
Overall length	170.9	171.3

SEDAN AND WAGON EXTERIOR COLORS

Alabaster • Bright Red • Black • Oxford White • Sandalwood Spice Clearcoat Metallic • Wild Strawberry Clearcoat Metallic • Crystal Blue Clearcoat Metallic • Twilight Blue Clearcoat Metallic • Light Titanium Clearcoat Metallic • Medium Titanium Clearcoat Metallic

SEDAN AND WAGON INTERIOR TRIM COLORS

Titanium • Crystal Blue • Scarlet • Light Sandalwood

LTS EXTERIOR COLORS

Black • Oxford White • Wild Strawberry Clearcoat Metallic • Twilight Blue Clearcoat Metallic • Light Titanium Clearcoat Metallic • Bright Red

LTS INTERIOR TRIM COLOR

Titanium

TOPAZ

FRONT ENGINE/FRONT-WHEEL DRIVE

ENGINES	GS/LS	LTS/XR5
Type	2.3L HSC Inline 4-cylinder	3.0L 6-cylinder
Displacement	2.3 liters	3.0 liters
Horsepower (SAE net)	98 @ 4400 rpm	140 @ 5500 rpm
Torque (SAE net)	124 lb-ft @ 2200 rpm	151 lb-ft @ 4250 rpm†
Fuel delivery	Sequential multi-port electronic fuel injection	Sequential multi-port electronic fuel injection
Compression ratio	9.0:1	9.0:1
Engine control	EEC-IV, elec- tronic engine control	EEC-IV, elec- tronic engine control

TRANSAXLES

Manual	Five-speed with self-adjusting clutch linkage
Automatic	Three-speed, wide ratio

SUSPENSION

Front	Independent MacPherson nitrogen gas-pressurized struts with strut-mounted coil springs, stabilizer bar, forged lower control arms and cast steering knuckles
Rear	Independent parallel four-bar with MacPherson nitrogen gas-pressurized struts, coil springs, parallel suspension arms and double tension struts. (Rear stabilizer bar on all models with 3.0L engine.)

STEERING

Type	Power-assist rack-and-pinion with 18.3:1 overall ratio on center
------	--

DIMENSIONS (in inches)

	TWO-DOOR	FOUR-DOOR
Wheelbase	99.9	99.9
Overall length	176.7	177.0

GS AND LS EXTERIOR COLORS

Black • Oxford White • Medium Red • Light Blue • Light Titanium • Bright Red • Reef Blue Metallic • Light Mocha • Deep Bay Blue Metallic

GS AND LS OPTIONAL CLEARCOAT COLORS

Medium Titanium Clearcoat Metallic • Titanium Frost Clearcoat Metallic • Wild Strawberry Clearcoat Metallic • Mocha Frost Clearcoat • Twilight Blue Clearcoat Metallic • Bimini Blue Clearcoat Metallic

INTERIOR COLORS

Crystal Blue • Titanium • Mocha • Scarlet

XR5 AND LTS EXTERIOR COLORS‡

Wild Strawberry Clearcoat Metallic • Titanium Frost Clearcoat • Twilight Blue Clearcoat Metallic • Oxford White • Black

†Manual transaxle (auto @ 4500 rpm).

‡All feature complementing lower Tu-tone.

CAPRI

FRONT ENGINE/FRONT-WHEEL DRIVE

ENGINES	CAPRI	CAPRI XR2
Type	DOHC 16-valve Inline-4	Turbocharged, intercooled DOHC 16-valve Inline-4
Displacement	1.6 liters	1.6 liters
Horsepower (SAE net)	100 @ 5750 rpm	132 @ 6000 rpm
Torque (SAE net)	95 lb-ft @ 5500 rpm	136 lb-ft @ 3000 rpm
Fuel delivery	Multi-port electronic fuel injection	
Compression ratio	9.4:1	7.9:1

TRANSAXLES

Manual	Synchronized five-speed overdrive with self-adjusting hydraulic clutch on Capri, cable on XR2
Automatic	Electronically controlled four-speed overdrive with lock-up torque converter for improved highway fuel economy (N/A Capri XR2)

SUSPENSION

Front	Independent nitrogen gas-pressurized, MacPherson struts with strut-mounted coil springs and stabilizer bar. Anti-dive geometry and negative offset design
Rear	Independent twin trapezoidal link with gas-pressurized, MacPherson struts, strut-mounted coil springs and stabilizer bar. Self-stabilizing geometry design

STEERING

Type	Power-assisted rack-and-pinion with 17.6:1 ratio
------	--

DIMENSIONS (in inches)

	CAPRI	CAPRI XR2
Wheelbase	94.7	94.7
Overall length	166.1	166.1

EXTERIOR COLORS

Polar White • Platinum Clearcoat Metallic • Cardinal Red • Marine Blue Clearcoat Metallic† • Everglade Green Clearcoat Metallic • Stratosphere Blue† • Dark Charcoal Clearcoat Metallic

INTERIOR COLOR

Grey

CONVERTIBLE ROOF COLORS

Black • White

†Late availability.

Chances are, you started your day by starting your car.

Tens of millions of us do. Every day. All over the country. Surely, nothing we own is more closely and constantly intertwined with our lives than the automobile.

At Lincoln-Mercury, we never lose sight of the fact that our products go on to play a major part in the lives of people. That's why we're dedicated to bringing you cars that will not only serve you faithfully, but will also help make your life more enjoyable.

Stop by a Lincoln-Mercury dealer and see what we're doing.

Motorcraft QUALITY PARTS

Genuine Ford and Motorcraft original equipment replacement parts are engineered and manufactured to Ford's highest specifications. They're your best assurance of quality and long-term satisfaction because these replacement parts meet the same high standards as those installed in production.



The optional Ford Extended Service Plan covers selected components on new Mercury cars for longer than the vehicle's basic warranty. The cost is so moderate for the protection offered that it could pay for itself the first time it is needed. Ask your participating Lincoln-Mercury dealer for complete details of the plan, which is available on cars sold and normally operated in the 50 United States and Canada.




Ford Credit offers advantageous financing arrangements for qualified buyers, plus the convenience of making them right where you buy your car—at your Lincoln-Mercury dealer.

As an alternative to car ownership that may well suit your needs, there's Ford Credit's Red Carpet lease. Ask for the facts on leasing at your Lincoln-Mercury dealer.

EPA statement: 1992 EPA mileage estimates were unavailable when this publication was printed. The 1992 Mercurys, however, should post good mileage figures. Ask your Lincoln-Mercury dealer for the latest information.

Option availability: Options shown or described in this catalog are available at extra cost and may be offered only in combination with other options or subject to additional ordering requirements or limitations.



LINCOLN-MERCURY DIVISION 

Buckle up—*together we can save lives.*

LITHO IN USA (1.250M) 9-91 P-1101



Printed On Recycled Paper.