

1980 WAGONS

Chevrolet





Impala Station Wagon shown in dark green metallic with available roof carrier, Sport mirrors, body side moldings, wheel opening moldings, sport wheel covers, white-stripe tires, bumper rub strips and guards.

IMPALA

Versatility and value have been traditionally the hallmarks of an Impala Station Wagon. 1980 is no exception. Impala, like the Caprice Wagon, offers family-oriented features: a convenient three-way doorgate, easy rear seat conversion, a four-foot-wide cargo area, not one but two lockable storage compartments and a generous 87 cubic feet of cargo capacity with rear seat folded. There's even an available third seat option that lets you take more passengers along.

And that's the real beauty of an Impala Wagon. You can carry people or packages beautifully. On a maneuverable 116" wheelbase. With a computer-assisted-design, full-perimeter steel frame. A Full Coil spring suspension system for a smooth ride. And a new 4.4 Liter (267 Cu. In.) 2-Bbl. V8 is standard (not available in California).

The 1980 Impala Station Wagon. It's loaded with wagon value.



Easy seat conversion. A fingertip push on the button-type latch releases the second seat and moves it forward. Glide the seat down to its closed position and the conversion is complete.



Caprice Classic Station Wagon shown in yellow with available Estate Equipment, roof carrier, Sport mirrors, tinted glass, wire wheel covers, white-stripe tires, bumper rub strips and guards.

CAPRICE CLASSIC

The 1980 Caprice Classic is the top-of-the-line Chevrolet Wagon. Trim, sculptured lines outside . . . elegance and room inside. With a lot of great new styling ideas.

But the big news for 1980 is that Chevrolet is now offering, for the first time, diesel performance on their Caprice and Impala Wagons. (Not available in California at time of printing. See dealer for availability.) Take a test drive. See how smooth and quick a diesel can be.

You can have diesel performance in the most elegant of 1980 Chevrolet Wagons—the Caprice Classic. With its distinctive new grille, new wheel covers, and many standard features, it's a beautiful wagon to see and drive.



Lockable under-the-floor storage compartment. Lift up the floor of the cargo area and you'll find a spacious, lockable cargo compartment. It's 8 cubic feet in two-seat models; 4.5 cubic feet in three-seat models.



Your Chevrolet Caprice Classic or Impala Station Wagon features a three-way doorgate that swings wide to let people enter the available rear-facing third seat. Or a quick turn of the key and you can lower the glass for easy access to the rear. The door will open sideways with the glass up or down.



Then again, you may wish to have the use of the more traditional tailgate. No problem. Release the inside catch with the window lowered and the gate comes down to provide a load floor extension for easy loading or unloading. The tailgate also serves as a handy table for picnics and football game festivities.



Lockable storage compartment and utility trays. The left rear of the cargo area has a convenient lockable storage compartment that can accommodate 2 cubic feet of what-have-you. Along the sides of the cargo area, handy, built-in utility trays.

A WORD ABOUT THIS CATALOG: We have tried to make this catalog as comprehensive and factual as possible. And we hope you find it helpful. However, since the time of printing, some of the information you'll find here may have been updated. Also, some of the equipment shown or described throughout this catalog is available at extra cost. Your dealer has details and, before ordering, you should ask him to bring you up to date.

The right is reserved to make changes at any time, without notice, in prices, colors, materials, equipment, specifications and models, and to discontinue models. Check with your Chevrolet dealer for complete information.

CAPRICE CLASSIC AND IMPALA INTERIORS

People who own wagons usually spend a lot of time in them. That's why we've tried to design our wagons with your comfort and your convenience in mind.

With deep, full-foam cushion-supported seats covered in elegant cloth upholstery as shown in the available Caprice interior above. Or in tough vinyl as shown in the standard Impala interior below. And with either Caprice or an Impala Wagon, you've got plenty of cargo space. With the doorgate down, there's a 28.7-inch-high by 48.2-inch-wide opening for loading 87 cubic feet of cargo. Between the wheelhousings, there's a full four feet . . . and the floor length measures 7.5 feet with the rear seat down.

Impala standard vinyl interior shown in dark blue with available power door locks, power windows, air conditioning and GM-Delco AM/FM stereo radio.

Caprice Classic interior shown with available camel cloth 50/50 front seat with fold-down center armrests, remote-control Sport mirrors, power door locks and power windows.



The 1980 Chevrolet Caprice Classic instrument panel incorporates a modular-design instrument panel set off by handsome simulated Carpathian Elm wood-tone accents. It's easy to read and use.

Automatic transmission,

power steering, and an electric clock are standard and so is a flow-through ventilation system to help add outside air to your wagon. Also standard: power brakes, a lockable glove compartment with light, and a column-mounted headlight

dimmer and turn signal control. Available options, shown above, include Comfortron air conditioning, GM-Delco AM/FM stereo/Citizens Band radio, digital clock, Gage Package, electric rear window defogger and automatic speed control.

CAPRICE CLASSIC AND IMPALA STATION WAGON FEATURES

- 1. Maneuverable 116" wheelbase** for driving ease in city traffic and parking situations.
- 2. Power front disc/rear drum brakes.** A self-adjusting system. 12-inch power front disc brakes are fade resistant and have audible wear sensors to let you know when to replace linings. Large power brake booster results in reduced pedal effort.
- 3. Power steering** helps reduce turning effort for parking and slow-speed maneuvering, with forward-mounted recirculating-ball steering gear and linkage.
- 4. Computer-designed full-perimeter-type steel frame** helps provide structural rigidity.
- 5. Computer-selected coil springs** both front and rear help give a smoothed-out ride and are selected for specific vehicle and equipment weight.
- 6. Front stabilizer bar** helps provide ride stability on curves and turns.
- 7. Double-panel construction** provides two layers of steel in doors, hood and tailgate.
- 8. Cushioned body-mounting system** isolates passenger area and helps reduce road noise and vibration.
- 9. Inner fenders both front and rear** feature steel inner shields for road splash and corrosion protection.
- 10. Visible ball joint wear indicators** are located on front suspension lower control arms and provide visual check of ball joint wear.
- 11. Steel bumpers** with high-strength aluminum reinforcements.
- 12. Delco Freedom battery** never needs refilling. Sealed side terminals help resist corrosion.
- 13. Convenient column-mounted headlight dimmer and turn signal control.** Fingertip control for turn signals and headlight dimmer.
- 14. Built-in engine diagnostic connector** permits quick and accurate diagnosis of engine electrical system by service technicians.

More standards
New anti-corrosion measures • New V8 power • GM Specification steel-belted radial ply tires • Flow-through ventilation system • Concealed dual-speed windshield wipers • Inside hood release for underhood security • Color-keyed steering column and steering wheel • Coolant recovery system • Day/night inside rear-view mirror • Glove compartment lock and light • Power tailgate window • Vinyl-coated textured metal cargo area • New, compact spare tire stores vertically in the right rear trim panel and includes an assist strap to aid removal • Convenient single-loop front seat belt system with door-actuated retractors • Deluxe color-keyed seat and shoulder belts.

Caprice Classic only
New grille styling • Newly styled bright-accented triple-unit taillights • New special full wheel covers • Distinctive hood ornament • Wheel opening, side window, lower side door and tailgate window-opening moldings • Quiet Sound Group • Dual horns • Electric clock.

Impala only
Newly styled grille featuring vertical accent bars • Distinctive hubcaps • New rear lighting treatment with backup lights centered between the taillights and stop lights.

Extensive corrosion-resistant treatments
There is extensive use of zinc-rich pre-coated metal. And an oil base wax coating is used for the frame, with an abrasion-resistant coating for the lower body. Special coatings, primers and sealers are used in strategic areas.

14 exterior color choices
White, Silver, Black, Light Blue Metallic, Dark Blue Metallic, Dark Green Metallic, Yellow, Beige, Light Camel Metallic, Medium Camel Metallic, Claret Metallic, Dark Claret Metallic, Cinnabar, and Gray. Many Custom Two-Tone paint combinations are also available.

6 interior color choices
Black, Dark Blue, Green, Camel, Claret and Oyster.

LONG RECOMMENDED SERVICE INTERVALS*
(under normal driving conditions)
Engine Oil 12 months or 7,500 miles
Oil Filter 12 months or first 7,500 miles; every 15,000 miles thereafter
Spark Plugs 30,000 miles†
Chassis Lubrication ... 12 months or 7,500 miles
Automatic Transmission Fluid Change Every 100,000 miles

*Except diesel.
†22,500 miles with 4.4 Liter V8.

Standard V8 power
The standard Caprice/Impala Wagon engine is a 4.4 Liter (267 Cu. In.) 2-Bbl. V8 with an automatic transmission. The available 5.0 Liter (305 Cu. In.) 4-Bbl. V8 with automatic transmission is required in California.

DIMENSIONS (IN INCHES)

EXTERIOR	
Wheelbase	116.0
Length (overall)	215.1
Width (overall)	79.1
Height (loaded)	58.0
Tread—Front	62.2
Tread—Rear	64.1
Fuel Tank Capacity	22 gallons
INTERIOR	
Head room—Front	39.6/39.4*
Head room—2nd seat	39.4/39.1*
Leg room—Front	42.4
Leg room—2nd seat	37.7
Hip room—Front	55.0
Hip room—2nd seat	55.0
Shoulder room—Front	60.8
Shoulder room—2nd seat	60.9
Floor length, front seat to tailgate (closed)	90.2
Total cargo volume—rear seat down (cu. ft.)	88.6/87.9*

*Impala/Caprice

A WORD ABOUT ENGINES

Chevrolests are equipped with GM-built engines produced by various divisions. Please refer to the Caprice/Impala Power Teams Chart or see your dealer for details.

CHEVROLET POWER TEAMS

Engine	Ordering Code	Displacement (cubic inches)	Engine Availability	Automatic Transmission
ALL STATES EXCEPT CALIFORNIA (with Standard Emission System)				
4.4 Liter 2-Bbl. V8 (A)	L39	267	Std.	Std.
5.0 Liter 4-Bbl. V8 (A)	LG4	305	EC	Std.
5.7 Liter Diesel V8 (B)	LF9	350	EC	Std.
CALIFORNIA ONLY (with California Emission Requirements)				
5.0 Liter 4-Bbl. V8 (A)	LG4	305	EC	Std.
5.7 Liter Diesel V8 (B)*	LF9	350	EC	Std.

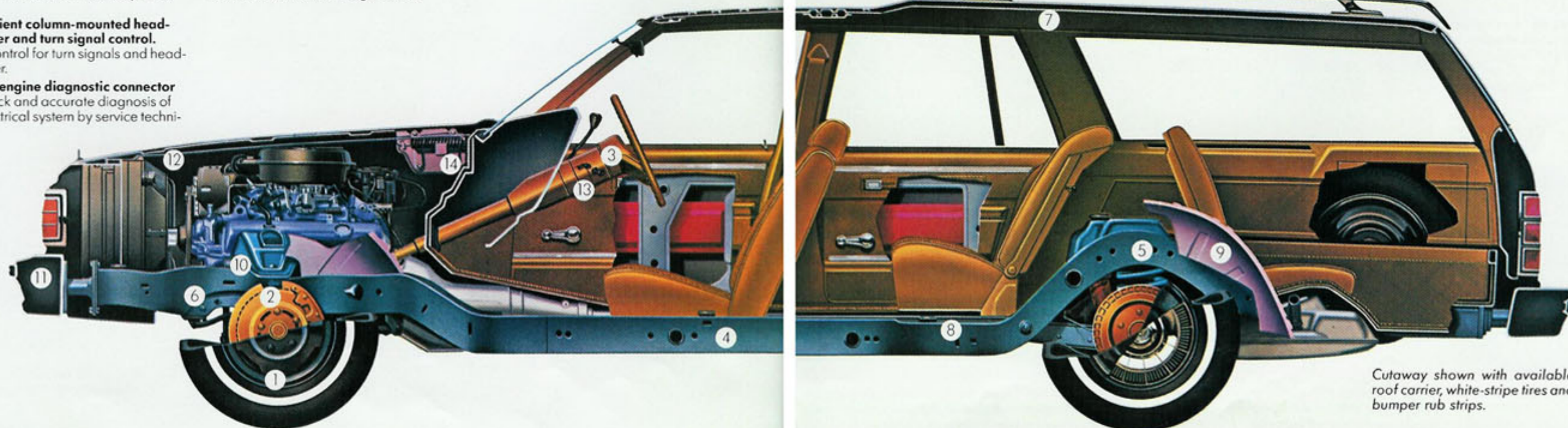
Std.—Standard. EC—Available at extra cost.
(A) Produced by GM—Chevrolet Motor Division and GM of Canada.
(B) Produced by GM—Oldsmobile Motor Division.
*Not available at time of printing. See dealer for availability.

Other standard engine features

High Energy Ignition • Delcotron generator with built-in solid-state regulator • Single exhaust system • Fuel evaporation control system stores fuel vapors normally lost to atmosphere from fuel tank and carburetor after engine shutdown • Catalytic converter handles most emission control functions outside the engine so it can be initially tuned at the factory for good performance.

DIESEL

Now Chevrolet offers you the advantages of diesel performance in their full-sized Caprice Classic and Impala Wagons. Take a test drive. We think you'll be quite impressed by the response, acceleration and smoothness of this available



Cutaway shown with available roof carrier, white-stripe tires and bumper rub strips.

MALIBU CLASSIC AND MALIBU WAGONS



Malibu Classic Station Wagon shown in white with available Estate Equipment, roof carrier, rear window air deflector, tinted glass, wire wheel covers, white-stripe tires, bumper rub strips and guards.



Meet the 1980 Malibu Wagon.

It could be the start of a long and beautiful relationship. That trim Malibu design is now powered by a larger displacement engine than last year. For 1980 a new, more powerful 3.8 Liter (229 Cu. In.) V6 engine is standard on all Malibu and Malibu Classic Station Wagons, except California. And if you like to personalize, choose from a wide range of options. An options availability chart is on page 14.



Malibu Station Wagon shown in yellow with available sport wheel covers and white-stripe tires.



The tailgate drops down by turning the handle, automatically unlatching the top window to give you a full 27.8-inch-high opening into the cargo area.



The window-half acts independently—swings up on gas-assisted cylinder hinges to allow fast, easy loading of light items. A helpful aid in tight parking spaces.



Malibu's versatile hatchgate gives you two-way convenience. The window-half swings up while the tailgate half drops down.



If you have a lot to load, the back seat lowers with the lift of a handle to give you full cargo capacity.



An available security package makes the concealed floor compartment lockable and puts covers and locks on the side storage bins. A great way to keep valuables like cameras and such out of sight.



People who buy a 1980 Chevrolet Malibu Classic or Malibu Station Wagon do so for two very important, though different, reasons.

First of all, they want a stylish-looking, mid-sized model. A wagon they can park and maneuver easily. In the looks department, there's no doubt that Malibu Wagons are very stylish automobiles. And Malibu's 108.1" wheelbase makes it easy to maneuver through city traffic and find that parking place.

Second, they want a wagon that's big enough to handle cargo and people comfortably.

We think you can get this great combination of style, size and value in a 1980 Malibu Wagon.

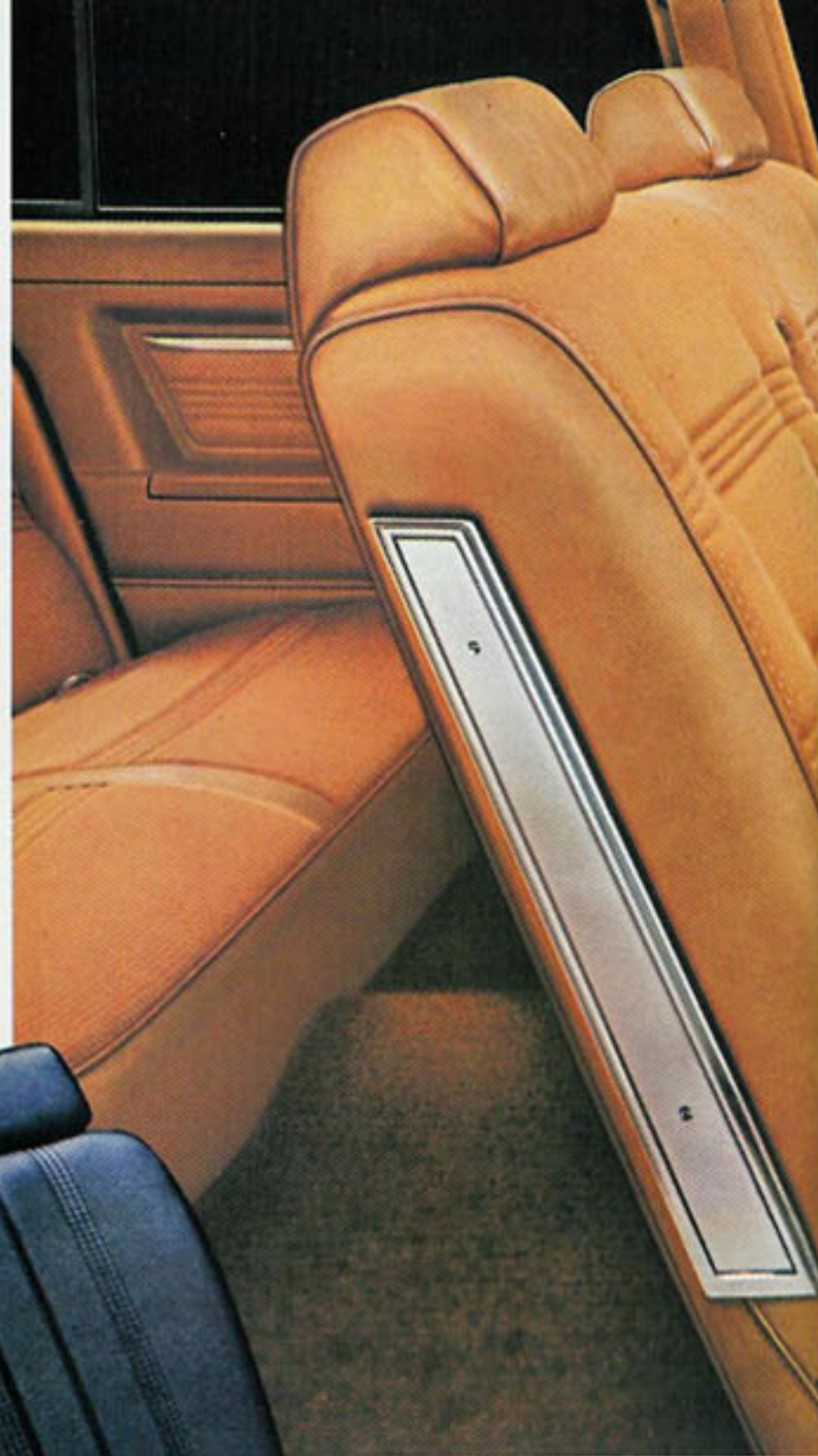
For example, the kind of room that matters. Six people and a cargo area big enough to accommodate their needs.

And if you order the Estate Equipment Package on your Malibu Classic, your wagon will be dressed up in distinctive new simulated wood-grain vinyl panels along the sides and tailgate. An ideal complement to Malibu Classic styling.

For looks . . . for loads . . . Malibu or Malibu Classic. 9



You get plenty of easy-to-use load space in your Malibu or Malibu Classic. 72.4 cubic feet and 71.8 cubic feet respectively. Station wagon options to consider are the deluxe load floor carpeting to help prevent nicks and scrapes on luggage, a roof carrier for extra loads and an electric rear window defogger to help visibility.



Malibu standard vinyl interior shown in blue.



Malibu Classic interior shown with available camel cloth, 50/50 front seat with fold-down center armrests, power door locks, air conditioning, GM-Delco AM/FM stereo radio and other available options.



Malibu Classic instrument panel with available air conditioning, AM/FM stereo radio, rear window defogger control, intermittent windshield wiper system, Gage Package, twin remote Sport mirrors and automatic speed control.

MALIBU CLASSIC AND MALIBU INTERIORS

Just as Malibu Classic and Malibu Wagon are trim and stylish outside, so they are inside.

You sit in full-foam molded seats with cut-pile carpeting below and a foam-backed cloth headliner above.

And there's a wide range of colors available to help you personalize the interior. For example, the Malibu Classic gives you a choice of standard vinyl upholstery in blue, black, camel and claret.

Or you can order the optional 50/50 front seat (with separate adjustable passenger seat) in blue, camel or claret woven cloth.

No matter which interior you select, all Malibu Wagons provide dual mode ventilation which circulates outside air when the ignition is on. And rear-seat passengers are treated to large, fixed rear-door windows with swing-out vents. Plus recessed armrests in the door.

There's a lot of good old-fashioned Chevrolet value in every new Malibu Classic or Malibu Station Wagon.

MALIBU CLASSIC AND MALIBU WAGON STANDARD FEATURES

1. Maneuverable 108.1" wheelbase. Short wheelbase chassis helps contribute to driving ease in city traffic and parking.

2. Power front disc/rear drum brake system. A self-adjusting system. Fade-resistant front disc brakes have audible wear sensors to let you know when to replace pads.

3. High Energy Ignition. A solid-state system that eliminates points and ignition condenser, yet delivers a high-voltage spark that helps extend time between recommended tune-ups.

4. Visible ball joint wear indicators. Located on front suspension lower control arms for visual check of ball joint wear.

5. Full Coil suspension system. With computer-selected coil springs for the specific model and equipment weight, along with front stabilizer bar.

6. Dual-mode high/low interior ventilation system. Fan-driven upper mode circulates air from the outside when the ignition is on. Lower ram air mode supplements upper mode at road speeds.

7. Delco Freedom battery. Never needs refilling. Sealed side terminals help resist corrosion.

8. Double-wall construction. Provides two layers of steel in doors, hood and tailgate.

9. Radial ply tires. GM Specification fiberglass-belted radial ply tires.

10. Wheel covers. Distinctive Chevrolet full wheel covers. (Available sport wheel covers and white-stripe tires shown.)

11. Steel bumpers. Solid steel bumpers both front and rear with high-strength aluminum reinforcements on front and steel on rear.

12. High-pressure compact spare tire. Takes up less space in the stowage compartment than conventional spare tire.

13. Convenient column-mounted headlight dimmer and turn signal control. Fingertip control for turn signals and headlight dimmer.

MORE STANDARD FEATURES

Delcotron generator • Steel full-perimeter-type frame • Wheel opening moldings • Front stabilizer bar • Concealed dual-speed windshield wipers • Large, fixed picture windows in rear side doors • Swing-out rear vents • Inside hood release for underhood security • Color-keyed cut-pile carpeting in passenger area • Day/night rearview mirror • Color-keyed steering column and steering wheel • Glove compartment lock • Deluxe color-keyed seat and shoulder belts • Coolant recovery system.

Malibu Classic only

New bright rocker panel moldings • Standup front end panel ornament • Wide wheel opening and window reveal moldings • Dual horns • Lights in ashtray, glove compartment, as well as courtesy light • Classic level interior trim.

Exterior colors

Beige, Black, Dark Blue Metallic, Light Blue Metallic, Light Camel Metallic, Medium Camel Metallic, Cinnabar, Claret, Dark Claret Metallic, Gray, Dark Green Metallic, Silver, White, and Yellow. Several available Custom Two-Tone paint combinations are also available.

Interior colors

Black, Blue, Camel and Claret available in most vinyl and cloth selections.

Extensive corrosion-resistant treatments

There is extensive use of zinc-rich pre-coated metal. And an oil base wax coating is used for the frame, with an abrasion-resistant coating for the lower body. Special coatings, primers and sealers are used in strategic areas.

Acoustical treatments

A cushioned body mounting system isolates passenger area from road noise and vibration. There are over ten other mastic or spray-on sound-deadener treatments used.

LONG RECOMMENDED SERVICE INTERVALS

(Under normal driving conditions)

Engine Oil	12 months or 7,500 miles
Oil Filter	12 months or first 7,500 miles; every 15,000 miles thereafter
Spark Plugs	30,000 miles*
Chassis Lubrication	12 months or 7,500 miles
Automatic Transmission Fluid Change	Every 100,000 miles

*22,500 miles with 4.4 Liter V8.

DIMENSIONS (IN INCHES)

EXTERIOR	
Wheelbase	108.1
Length (overall)	193.4
Width (overall)	71.2
Height (loaded)	54.5
Tread—Front	58.5
Tread—Rear	57.8
Fuel Tank Capacity	18.2 gallons
INTERIOR	
Head room—Front	38.8*
Head room—Rear (second seat)	38.8*
Hip room—Front	52.2
Hip room—Rear (second seat)	55.6
Leg room—Front	42.8
Leg room—Rear (second seat)	35.9
Shoulder room—Front	57.3
Shoulder room—Rear (second seat)	57.1
Total cargo volume—rear seat down	72.4 cu. ft.†
Opening height at tailgate	27.8
Tailgate opening width at belt	51.6
Floor length, front seat to tailgate	81.2
Width between wheelhousings	43.6

*38.5 on Malibu Classic †71.8 on Malibu Classic

A WORD ABOUT ENGINES

Chevrolests are equipped with GM-built engines produced by various divisions. Please refer to the Malibu Power Teams Chart or see your dealer for details.

MALIBU POWER TEAMS

Engine	Ordering Code	Displacement (cubic inches)	Transmission Availability		
			Three-Speed Manual (1)	Automatic	
ALL STATES EXCEPT CALIFORNIA (with Standard Emission System)					
3.8 Liter 2-Bbl. V6 (A)	LC3	229	Std.	Std.	EC
4.4 Liter 2-Bbl. V8 (B)	L39	267	EC (2)	NA	EC
5.0 Liter 4-Bbl. V8 (B)	LG4	305	EC (2)	NA	EC
CALIFORNIA ONLY (with California Emission Requirements)					
3.8 Liter 2-Bbl. V6 (C)	LD5	231	Std.	NA	EC
5.0 Liter 4-Bbl. V8 (B)	LG4	305	EC (2)	NA	EC

Std.—Standard. NA—Not Available. EC—Available at extra cost.

(1) With floor-mounted shift control.

(2) Power steering required.

(A) Produced by GM—Chevrolet Motor Division.

(B) Produced by GM—Chevrolet Motor Division and GM of Canada.

(C) Produced by GM—Buick Motor Division.

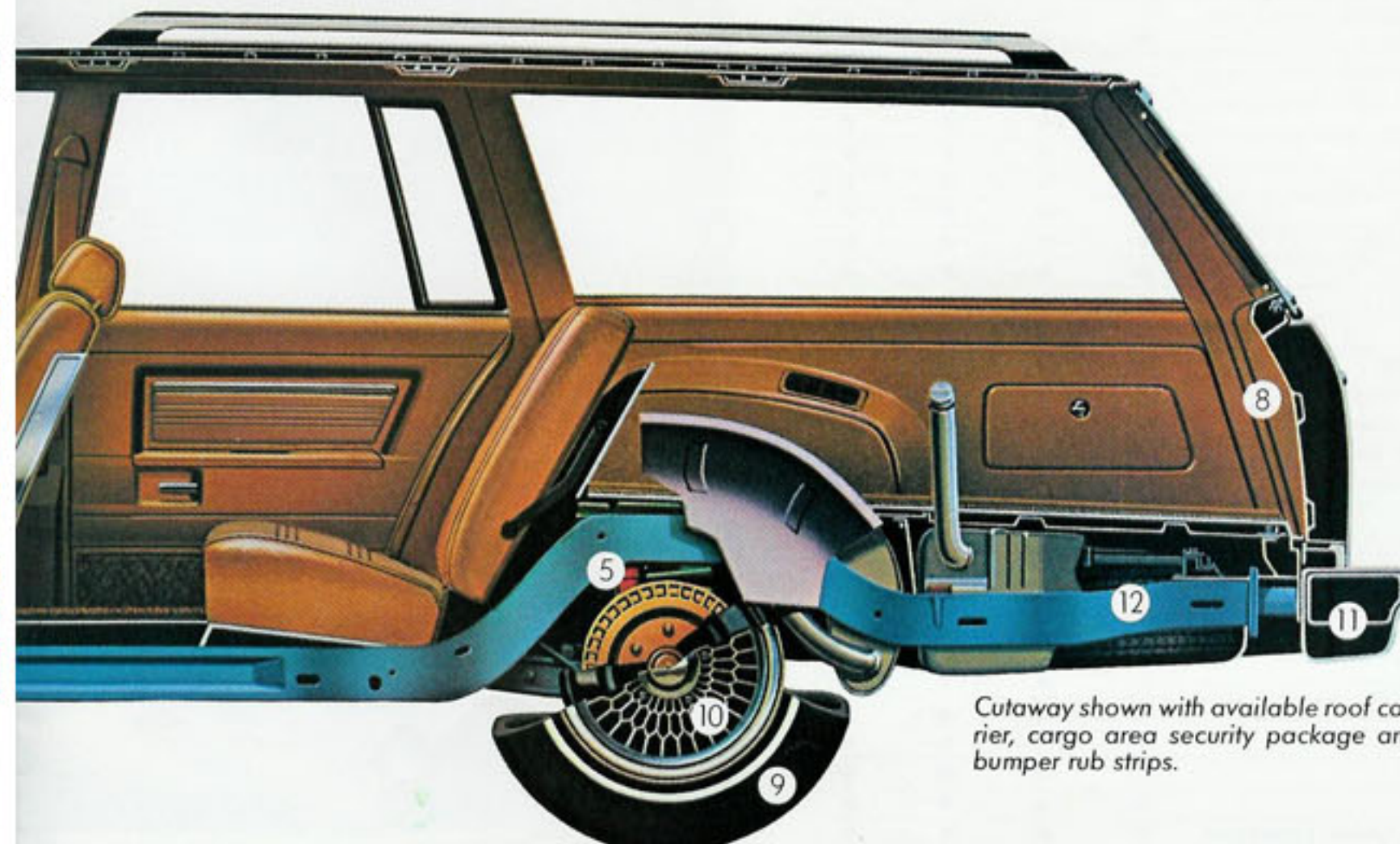
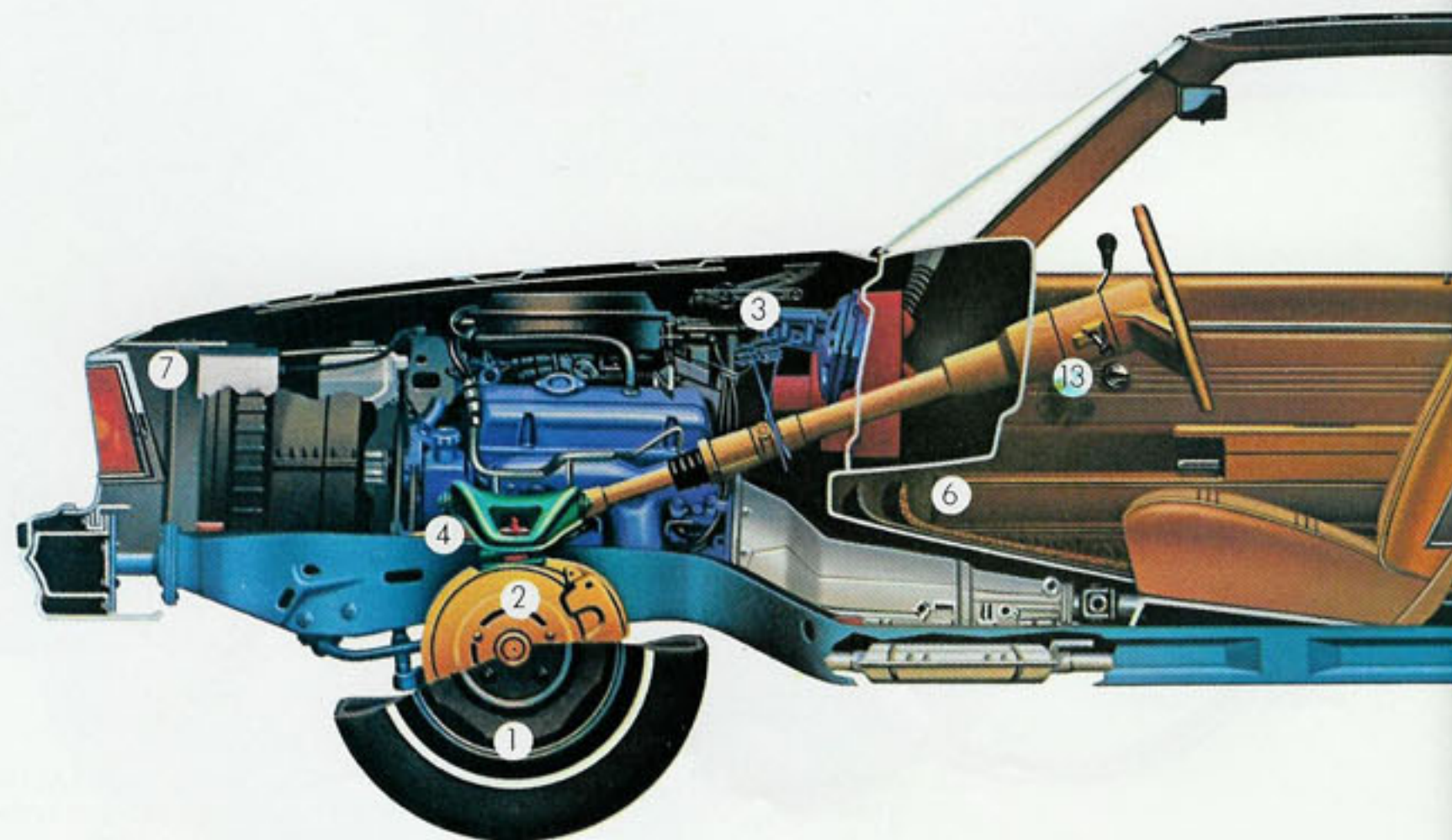
Standard 3.8 Liter V6 Engine

A 3.8 Liter (229 Cu. In.) 2-Bbl. V6 engine with three-speed manual floor-shift transmission is standard, except in California. In California the 3.8 Liter (231 Cu. In.) 2-Bbl. V6 or the available 5.0 Liter V8 with automatic transmission is required.

This V6 engine represents a blend of six-cylinder performance and V8 smoothness. Although the engine block and cylinder heads are cast-iron tough, the V6 configuration makes these engines lighter and more compact than a conventional in-line Six.

Standard engine features.

Fuel evaporation control system stores fuel vapors normally lost to atmosphere from the fuel tank and carburetor after engine is shut down • Carburetor hot air system mixes hot air from the manifold heat stove with outside air during warm-up • Catalytic converter handles most emission control functions outside the engine so the car can be initially tuned at the factory for good engine performance.



Cutaway shown with available roof carrier, cargo area security package and bumper rub strips.

AVAILABLE OPTIONS

	Caprice Classic	Impala	Malibu Classic	Malibu
Air Conditioning	●	●	●	●
Air Conditioning, Comfortron	●	●	NA	NA
Air Deflector, Rear Window	NA	NA	●	●
Axles:				
Performance Axle Ratio	●	●	●	●
Limited Slip Differential	●	●	●	●
Battery, Heavy-Duty	●	●	●	●
Bumper Equipment, Front & Rear:				
Bumper Rub Strips	●	●	●	●
Bumper Guards	●	●	●	●
Carpeting, Deluxe Load Floor	●	●	●	●
Carrier, Roof	●	●	●	●
Clocks:				
Digital	●	●	NA	NA
Electric	S	●	●	●
Defogger, Electric Rear Window	●	●	●	●
Door Lock System, Power	●	●	●	●
Estate Equipment	●	NA	●	NA
Gage Package	●	●	●	●
Gage Package with Tachometer	NA	NA	●	●
Generator, HD Delcotron	●	●	●	●
Glass, Tinted	●	●	●	●
Horns, Dual	S	●	S	●
Lighting, Auxiliary	●	●	●	●
Mirrors:				
Remote-Control Outside Rearview—LH	●	●	●	●
Remote-Control Outside Rearview—LH & RH	●	●	NA	NA
Sport, Twin Remote	●	●	●	●
Sport, LH Remote & RH Manual	●	●	●	●
Visor, RH	●	●	NA	NA
Visor, Illuminated RH	●	●	NA	NA
Moldings:				
Body Side	●	●	●	●
Door Edge Guard	●	●	●	●
Quiet Sound Group	S	●	S	●
Radiator, Heavy-Duty	●	●	●	●
Radio Equipment:				
AM—AM/FM	●	●	●	●
AM/FM/Citizens Band with Power Antenna	●	●	●	●
AM/FM Stereo/Citizens Band with Power Antenna	●	●	●	●
AM/FM Stereo	●	●	●	●
AM/FM Stereo/8-Track	●	●	●	●
AM/FM Stereo/Cassette	●	●	●	●
AM/8-Track Stereo	●	●	●	●
AM/FM Stereo/Digital Clock	●	●	●	●
Speaker, Rear Seat	●	●	●	●
Speakers, Dual Front	●	●	●	●
Power Antenna	●	●	●	●
Six-Way Power Seat	●	●	●	NA
Speed Control, Automatic	●	●	●	●
Steering Wheel, Comfortilt	●	●	●	●
Striping, Body Side Pin	●	●	●	●
Suspension Equipment:				
Shock Absorbers, Inflatable Rear	●	●	NA	NA
Heavy-Duty Front & Rear	●	●	NA	NA
Tailgate Lock, Power	●	●	NA	NA
Tailgate Window Release, Power	NA	NA	●	●
Transmission, Automatic	S	S	●	●
Wheel Equipment:				
Full Wheel Covers	S	●	S	S
Sport Wheel Covers	●	●	●	●
Wire Wheel Covers	●	NA	●	●
Rally Wheels	NA	NA	●	●
Windows, Power	●	●	●	●
Windshield Wiper System, Intermittent	●	●	●	●

NA—Not Available. S—Standard. ●—Available at extra cost. LH—Left hand. RH—Right hand. Check your dealer for complete details.



Comfortilt steering wheel. Adjusts to six different comfort positions.



Automatic speed control. Maintains your set speed until the brake pedal is touched.



Power door lock system. Lock and unlock all doors from the driver's seat.



Power windows. Raise and lower your wagon's windows from a master control panel.



Rear window air deflector. Helps keep snow, dust and moisture from accumulating on the rear window. Included with available roof carrier on full-size wagons.



Intermittent windshield wiper system. Ideal for light rain or mist. Varies the wipe cycle.



Power tailgate lock. Lock or unlock the tailgate from inside wagon. (Full-size wagon only.)



Radio equipment. A wide variety available—including CB transmitters and receivers and eight-track stereo tape.



Roof carrier. The perfect spot to put large, bulky items. A great asset on a family vacation.



Inflatable rear shock absorbers. A great help when carrying extra-heavy loads.



Sport wheel covers. A classy way to dress up your wagon. Caprice/Impala style shown.



Air conditioning. A great all-weather option. Several settings available for personal comfort. (Comfortron shown.)



Deluxe loadfloor carpeting. Matches the color of your wagon's passenger area carpeting. Helps protect items from scratches while loading or unloading.



Power antenna. Automatically raise or lower radio antenna from inside wagon.



Visor mirror. Available with or without illumination for right-hand visor.

SAFETY FEATURES

Occupant protection.

Seat belts with push-button buckles for all passenger positions • Two front combination seat and inertia reel shoulder belts for driver (with reminder light and buzzer) and right front passenger • Energy-absorbing steering column • Passenger guard door locks • Safety door latches and stamped steel hinges • Folding seat back latches • Energy-absorbing padded instrument panel and front seat back tops • Laminated windshield • Safety armrests.

Accident avoidance.

Side marker lights and reflectors • Parking lamps that illuminate with headlights • Four-way hazard warning flasher • Backup lights • Lane change feature in direction signal control • Windshield defrosters, washer and dual-speed wipers • Wide-view inside mirror (vinyl-edged, shatter-resistant glass and deflecting support) • Outside rearview mirror • Dual master cylinder brake system with warning light • Starter safety switch • Dual-action safety hood latches.

Anti-theft.

Anti-theft ignition key reminder buzzer • Anti-theft steering column lock.

A word about assembly, components and optional equipment in these Chevrolets.

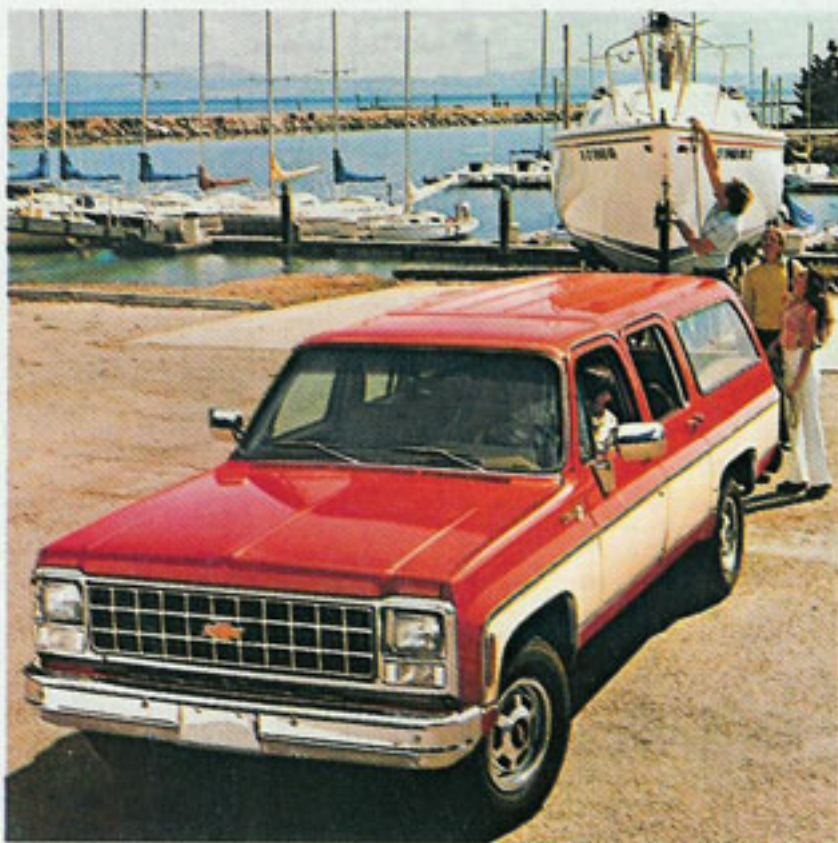
The Chevrolets described in this catalog are assembled at facilities of General Motors Corporation operated by the Chevrolet Division or GM of Canada. These vehicles incorporate thousands of different components produced by various divisions of General Motors and by various suppliers to General Motors. From time to time during the manufacturing process, it may be necessary, in order to meet public demand for particular vehicles or equipment, or to meet federally mandated emissions, safety and fuel economy requirements, or for other reasons, to produce Chevrolet products with different components or differently sourced components than initially scheduled. All such components have been approved for use in Chevrolet products and will provide the quality performance associated with the Chevrolet name.

With respect to extra cost optional equipment, make certain you specify the type of equipment you desire on your vehicle when ordering it from your dealer. Some options may be unavailable when your car is built. Your dealer receives advice regarding current availability of options. You may ask the dealer for this information. GM also requests the dealer to advise you if an option you ordered is unavailable. We suggest you verify that your car includes the optional equipment you ordered or, if there are changes, that they are acceptable to you.

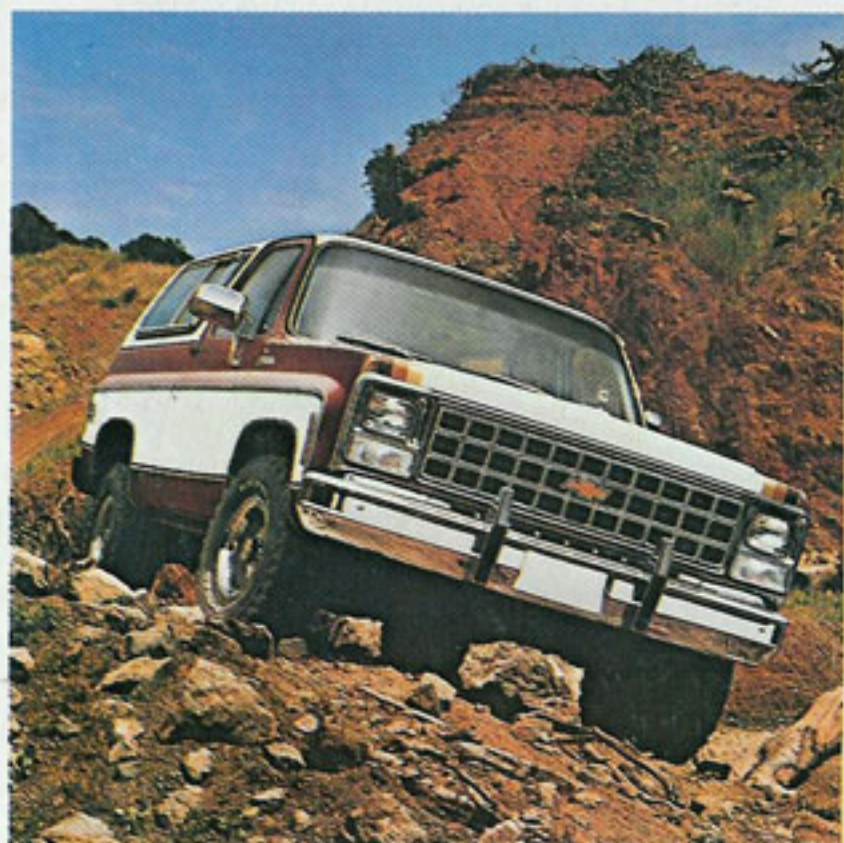
AND FOR EVEN MORE ROOM, LOOK AT THESE CHEVY VEHICLES.



Seats up to 12. Holds plenty of cargo. Chevy Sportvan is available in a broad range of sizes and capacities to fit many family and business applications. There's seating available for up to 12 depending on available equipment and model selected. Choose from 110" or 125" wheelbase models with GVW ratings up to 8600 lbs. on the G30 125" wheelbase model. Chevy G30 Sportvan shown in Deluxe Two-Tone blue and white with available 12-passenger seating and Below Eycline mirrors.



The superwagon built to stay tough. Suburban does what few other wagons can. Properly equipped, it can seat up to nine adults. It can take on 144 cubic feet of cargo with just the front seat in place. A wide selection of engines, plus 4-wheel-drive models, is available to match your driving needs. Chevy C20 Suburban shown in Special Two-Tone red and Santa Fe tan with available Silverado trim and Below Eycline mirrors.



Built to take on the rough country. Blazer's conventional part-time 4-wheel-drive system is standard this year. Manually operated freewheeling front hubs allow you to switch from freewheeling to front lock position. Also available: 2-wheel-drive models. Chevy K10 Blazer shown in Special Two-Tone dark camel and white with available Silverado trim, Exterior Decor Package, Below Eycline mirrors and Rally wheels.