

2006 CANYON



GMC

CANYON: A LEGEND AMONG MID-SIZE PICKUPS.

GMC
BUILDING LEGENDS

AT GMC, WE'VE BEEN ENGINEERING AND BUILDING TRUCKS

for over a century, and in that time we've gotten to know a lot about the people who buy them. We've learned, for instance, that our customers buy trucks for a huge variety of reasons, and that no one vehicle could ever be right for everyone. Enter Canyon. Canyon shares its genes with our mighty Sierra full-size trucks, so you can count on the serious technology and capability you expect from a genuine GMC. Yet thanks to its sensible size, Canyon also offers the agility, manoeuvrability and economy a full-size just can't match. It all adds up to one legendary mid-size truck.



Canyon Crew Cab SLE, shown in Sunburst Orange Metallic. Canyon Extended Cab SLE 4x4, shown in Silver Birch Metallic. Canyon Regular Cab SLE 4x4, shown in Superior Blue Metallic.



For more information about Canyon
visit our Web site at canyon.gmcanada.com

CANYON CREW CAB



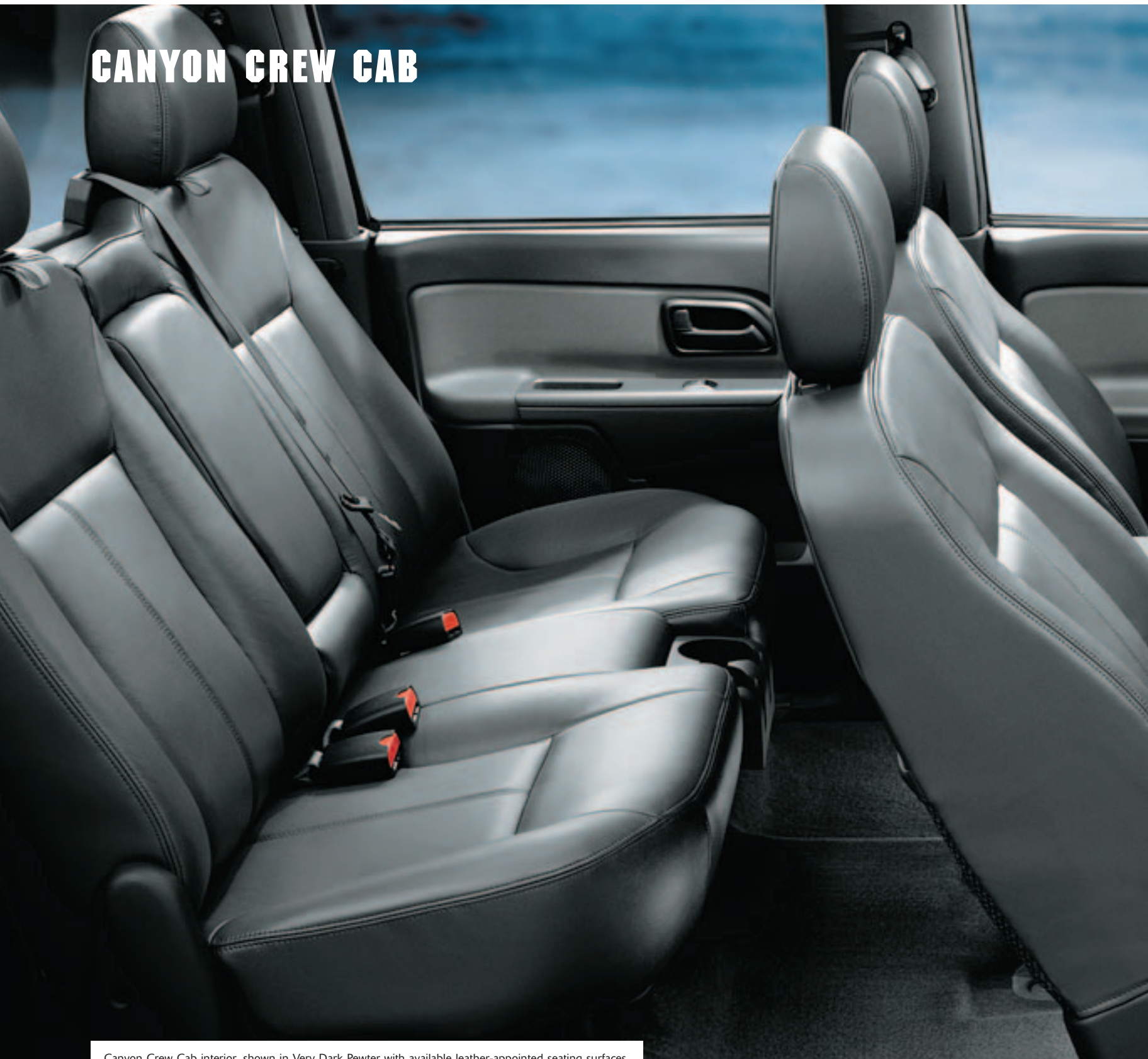


THE MORE, THE MERRIER.

CANYON CREW CAB IS ABOUT NOT MAKING COMPROMISES. Crew Cab has a payload rating of up to 607 kg (1338 lb.) and a cargo box that measures almost 1.5 metres (over 5 ft.) long, so it's perfect for hauling your favourite toys out to the country. And inside, there's abundant space for you and your friends, so everyone can go for the ride. Canyon Crew Cab does it all.

Canyon Crew Cab SLE 4x4, shown in Silver Birch Metallic with available equipment.

CANYON CREW CAB



Canyon Crew Cab interior, shown in Very Dark Pewter with available leather-appointed seating surfaces.



SPACE, CONVENIENCE AND COMFORT ARE WHAT IT'S ALL ABOUT.

AVAILABLE EXCLUSIVELY IN SLE TRIM, Canyon Crew Cab is one very comfortable mid-size truck. Entry and exit are easy, thanks to Crew Cab's four full-size hinged front doors. Once inside, there's abundant room for as many as six occupants. Supportive front bucket seats are standard equipment. There's room for three on the flat-folding 60/40 divided rear bench. For your convenience, power windows, door locks and mirrors are all included, as are cruise control, a tilt steering column and much more. Canyon Crew Cab even features an excellent standard audio system complete with CD player, MP3 playback, auto tone control and a six-speaker sound system.

CANYON CREW CAB'S 60/40 DIVIDED REAR SEATBACKS fold forward separately or together to create a flat storage area for cargo items.



CANYON EXTENDED CAB



Canyon Extended Cab SLE 4x4 with Z71 Suspension, shown in Fire Red.



THE MOST VERSATILE TRUCK IN A VERSATILE FAMILY.

WITH A CARGO BOX MORE THAN 1.8 METRES (6 FEET) LONG, a payload capacity of up to 695 kg (1532 lb.) and a maximum trailer rating of 1814 kg (4000 lb.),* Canyon Extended Cab has what it takes to haul materials, tools or sports gear almost anywhere you'd want to go. But that's just part of this truck's story. Canyon Extended Cab also features an intelligently executed interior with seating for up to five. To create more room for gear, the rear jump seats fold up out of the way when they're not needed. There's also convenient rear under-seat compartments that provide storage for items you'd prefer to keep out of sight.

*When properly equipped.



1. COVERED STORAGE under the rear jump seats adds an extra measure of security for small items such as tools or cameras and can be folded forward into the footwell for a flat storage surface.



2. A 60/40 DIVIDED FRONT BENCH SEAT is standard on Canyon Extended Cab.

CANYON REGULAR CAB



Canyon Regular Cab SL 4x4, shown in Silver Birch Metallic.



THE PURIST'S MID-SIZE PICKUP.

A **THOROUGHLY MODERN UPDATE** on a pickup truck classic, Canyon Regular Cab is precisely what many drivers believe a mid-size pickup should be. Its trim size, shorter wheelbase and tight turning circle make it a breeze to manoeuvre in close quarters, and its lighter weight gives it a performance advantage, on-road and off. Canyon Regular Cab also has a talent for hauling, with a standard 1.8 m (6 ft.) box and substantial cargo-carrying and trailering capabilities.

CANYON REGULAR CAB features a roomy and stylish interior. The reclining bucket seats and centre console shown below are available. A 60/40 divided bench seat is standard.



CANYON CONTROL





CANYON PUTS YOU IN CHARGE.

THE CANYON DRIVING ENVIRONMENT has been designed for contemporary good looks and maximum convenience and control. The analogue gauges provide you with essential information at a glance. A standard tilt adjustable steering column and well-positioned controls add to your comfort behind the wheel. Controls for the audio and heating, ventilation and air conditioning systems are located high on the centre stack, where they're within easy reach. Even the transfer case on 4x4 models is easy to manipulate. It's an electronic Insta-Trac unit that's controlled via push buttons conveniently mounted on the dash. The system also includes a Neutral position that allows the truck to be towed flat behind a recreational vehicle.



1. AVAILABLE ON CANYON SLE MODELS IS AN INTERIOR REAR-VIEW MIRROR that dims automatically to help prevent glare. It includes an electronic compass, an exterior temperature display and dual reading lights.
2. A POWER ADJUSTABLE SUNROOF that slides fully open or tilts up at its rear edge to provide additional ventilation is available on all cab styles.
3. EVERY CANYON MODEL FEATURES A DRIVER INFORMATION CENTRE that provides alerts about a variety of vehicle conditions.

CANYON POWER – CANYON TOWING



WINNER BY A TECHNICAL KNOCK-OUT.

UNDER THE HOOD, CANYON OFFERS A CHOICE OF VORTEC POWERPLANTS

loaded with leading-edge features. The brawny four-cylinder Vortec 2800 generates 175 horsepower – more than any other four-cylinder engine in the class.* For even more power, there's an available Vortec 3500 five-cylinder engine that produces 220 horsepower and 225 pounds-feet of torque. It's a sophisticated, fuel-efficient powerplant that delivers performance comparable with most competitive V6s. Both engines are available with your choice of a standard five-speed manual transmission or an available four-speed automatic with overdrive and electronic controls. Properly equipped with the Vortec 3500 engine and automatic transmission, Canyon is rated to tow up to 1814 kg (4000 lb.).

*Based on 2005 Model Year data for GM Medium Pickup segment and latest published competitive information available at time of printing. Excludes other GM vehicles.

COIL-ON-PLUG IGNITION

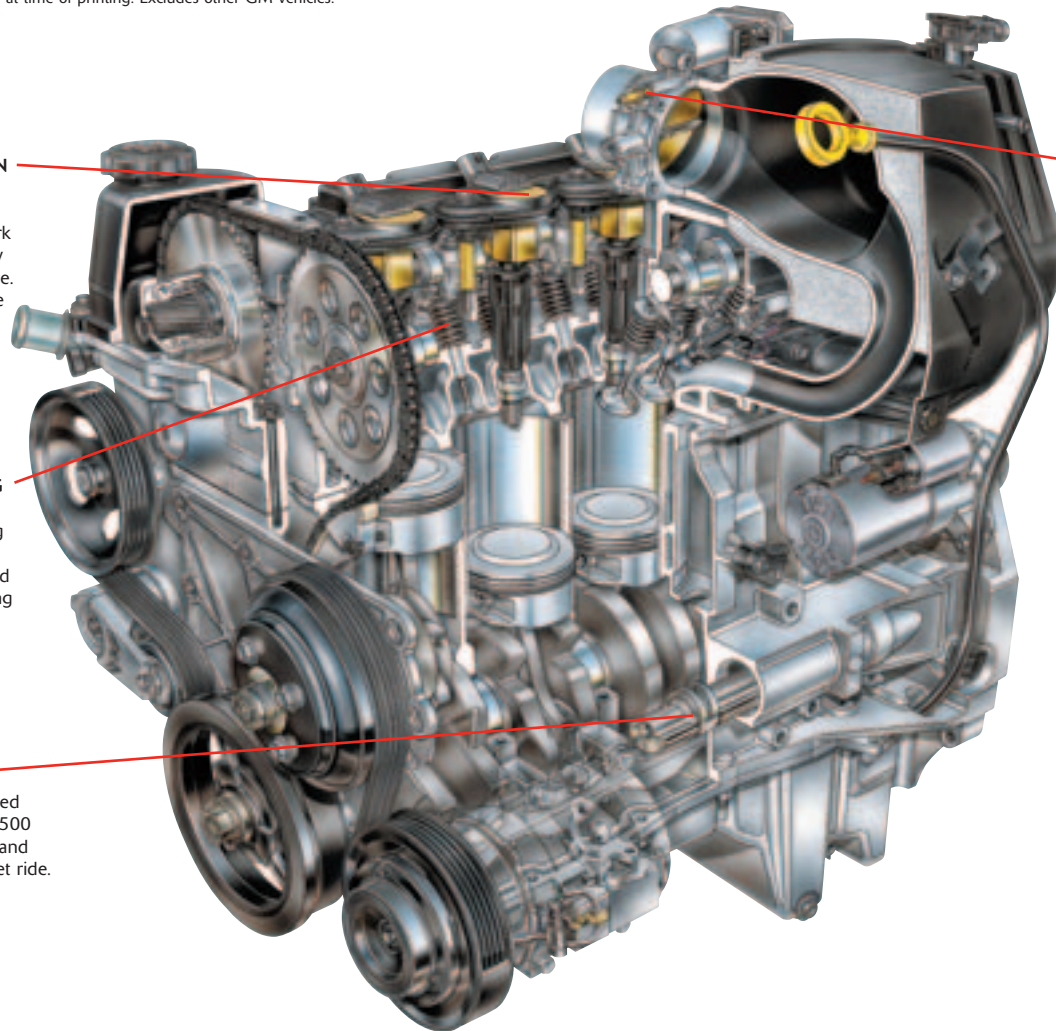
Both Canyon engines use coil-on-plug ignition, which provides a high-energy spark that enhances fuel economy and high-speed performance. The system also reduces the costs of maintenance.

VARIABLE VALVE TIMING

Exhaust valve opening and closing times vary according to engine speed, helping to extract maximum power and fuel efficiency in all operating conditions.

BALANCE SHAFTS

Dual balance shafts integrated into the Vortec 2800 and 3500 virtually eliminate vibration and contribute to a smooth, quiet ride.



ELECTRONIC THROTTLE CONTROL (ETC)

Rather than a mechanical throttle cable, Canyon's gas pedal is linked to the engine via a sophisticated "drive-by-wire" connection. ETC contributes to maximum fuel efficiency, high output and low emissions.

ENVIABLE BLOODLINES

Both of Canyon's available engines share their architecture and virtually all of their technology with the Vortec 4200 in-line 6-cylinder engine that was recently named one of the Ward's 10 Best Engines of 2005, for the 4th year in a row, by Ward's AutoWorld, January 2005.

CANYON VERSATILITY

QUALITY GM ACCESSORIES like the tubular box extender shown here can help make your Canyon even more versatile.



WITH A CHOICE OF REGULAR CAB, EXTENDED CAB AND CREW CAB BODY STYLES, Canyon helps every driver to strike the right balance between cargo- and passenger-carrying capabilities.



Regular Cab with 6.0 ft. box.



Extended Cab with 6.0 ft. box.



Crew Cab with 5.0 ft. box.

GOES ALMOST ANYWHERE. DOES ALMOST ANYTHING.

FOR MOST DRIVERS, THE CARGO BOX is their reason for choosing a pickup in the first place. Canyon's is one of the best. For quality and long life, it's a welded-steel design with sturdy double-wall construction. Other intelligent features include no fewer than eight cargo tie-downs and a locking two-position tailgate. There are also moulded indentations in the box sidewalls that allow you to divide the box vertically when you want to carry two different types of load at once. Available bedliners, bed mats and other GM Accessories add even more utility.



1. INDENTATIONS AT THE SIDES OF CANYON'S CARGO BOX allow you to separate a load in the lower part of the box from one above with a plywood sheet.
2. STANDARD TIE-DOWN ANCHORS make it a simple matter to secure bulky or awkward items in Canyon's cargo box.
3. THE STANDARD LOCKABLE TAILGATE can stop securely at a 55° angle, where it's at the same height as the rear wheelhouses. It's a feature that comes in very handy when you need to carry 4'x8' sheets of building material.

CANYON SAFETY & SECURITY



Every GMC Canyon is designed and engineered to be the market leader in capability and technology. So it should come as no surprise that Canyon also offers the unparalleled combination of safety, security and convenience of OnStar.* OnStar uses advanced communications technology to enhance your peace of mind whenever you're in your Canyon. All it takes is a single push of the blue OnStar button usually located on the interior rear-view mirror, in the overhead console, or near the radio display – the button connects you with one of our specially trained OnStar Advisors. They are standing by, ready to provide support 24 hours a day, 365 days a year.

What can OnStar Advisors do for you? They can provide a wealth of information and perform a variety of services, including a remote diagnostic check of your vehicle's engine and electrical components. In an emergency, an Advisor will attempt to locate your vehicle, find out what assistance you need, and notify nearby emergency service providers. And if air bags are deployed in your vehicle, an Advisor will contact you to determine if you are in need of assistance.

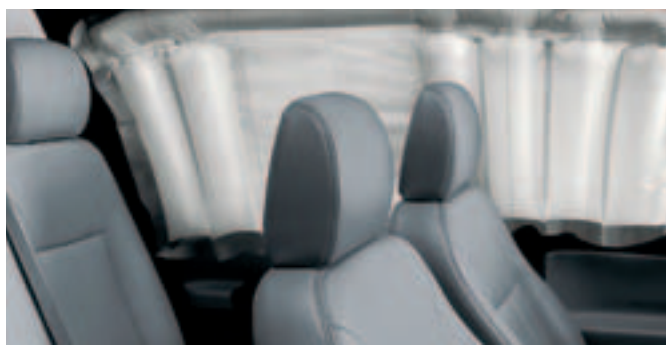
Another convenient feature is OnStar Hands-Free Calling, a hands-free, voice-activated wireless technology integrated into your vehicle. It's there in case your hand-held phone is lost, forgotten or has a low battery. Even better, there are no additional monthly fees, or additional long distance and roaming charges. And as a new customer, you will receive 30 complimentary minutes good for two months after activation.

Now you can enjoy the peace of mind that comes with knowing you're doing all you can to help keep you, your family, and your vehicle safe. Just ask the almost 150,000 people who have become OnStar subscribers in Canada. How hard does OnStar work for you? The facts speak for themselves: every month in Canada OnStar Advisors handle an average of 9100 routing calls, 2500 emergency calls, 2600 door unlocks, and 625 Roadside Assistance dispatches.

OnStar offers two different service plans, allowing you to select the services that are most convenient for you. The Safe & Sound Plan is available for the first year on Canyon SLE models. The available Directions & Connections Plan offers all of the safety and security services included in the Safe & Sound Plan, plus you'll have access to driving directions and information and convenience services and RideAssist. See your dealer for more information on plans and services.

*OnStar services require vehicle electrical system (including battery), wireless service, and GPS satellite signals to be available and operating for features to function properly. Not all OnStar features are available on all vehicles. OnStar Hands-Free Calling requires a Hands-Free Calling enabled vehicle, existing OnStar service contract, and prepaid calling minutes, and is not available in Alaska and some other markets. Calls may be made to the U.S. and Canada only. OnStar voice recognition system may not work with some voices. OnStar acts as a link to existing emergency service providers. Subscription Service Agreement required. Due to the transition of the wireless industry from analogue to digital technology, as of January 1, 2008, OnStar plans to offer service only through equipment that operates on the digital network, which may require the purchase of a system upgrade for eligible vehicles. Call 1.888.4.ONSTAR (1.888.466.7827), 1.877.248.2080 or visit onstar.ca for OnStar's Terms & Conditions, Privacy Policy, and system limitations and details.

EVERY CANYON COMES EQUIPPED WITH LITERALLY DOZENS OF FEATURES that add to your safety and security every time you take the wheel. From its excellent visibility and ergonomically designed driver controls to its robust computer-designed structure, standard frontal air bags and available roof-mounted side curtain air bags, Canyon is engineered and equipped for your protection.



CANYON ACCESSORIES



HAVE IT YOUR WAY.

HOW DO YOU MAKE A GREAT TRUCK EVEN GREATER?

By upgrading its appearance and function with a few carefully selected GM Accessories. GM Accessories are the only accessories that are integrated into the process of designing your vehicle, ensuring excellent fit, finish and functionality. And only GM Accessories are backed by GM's 3-year/60,000 km New Vehicle Limited Warranty.* They can also be included in your new-vehicle lease or finance agreement through GMAC. Ask your dealer for a complete list of the GM Accessories available for Canyon. Or visit gmcanada.com

*Whichever comes first, when permanently installed by the dealer at the time you purchase or lease your new vehicle.

GM Accessories for Canyon include:

- **Bedliner**
- **Bed rail protectors**
- **Fender flares**
- **Chrome brush/grille guard**
- **Hitch-mounted carrier system**
- **Hard folding tonneau cover**
- **Chrome bedrails**
- **Splash guards**
- **All-weather floor mats.**



Accessories

CANYON STANDARD & OPTIONAL FEATURES

SAFETY AND SECURITY	Z85 SL/SLE	Z71 SL/SLE
Air bags – driver and front-passenger with Passenger Sensing System	S/S	S/S
Air bags – driver, front-passenger and rear-seat outboard passengers, roof-mounted head curtain side-impact	0/0	0/0
Door locks – rear, child-security (Crew Cab)	–/S	–/S
Headlights – with automatic light control	S/S	S/S
Keyless entry system – remote (std. on Crew Cab)	–/0	–/0
OnStar In-Vehicle Communications and Assistance Service – includes one-year Safe & Sound Plan	–/0	–/0
Safety restraints – LATCH (Lower Anchors and top Tethers for Children)	S/S	S/S
Theft-deterrent system – PASSLock	S/S	S/S
Theft-deterrent system – content alarm, audible/visible (std. on Crew Cab)	–/0	–/0
Traction assist – electronic (2WD models) [†]	0/0	S/S

[†] Requires automatic transmission.

MECHANICAL

Battery – with run-down protection	S/S	S/S
Brakes – front disc/rear drum with 4-wheel anti-lock braking system (ABS)	S/S	S/S
Engine – Vortec 2800 in-line 4-cylinder Horsepower – 175 @ 5600 rpm, Torque – 185 lb.-ft. @ 2800 rpm – Reg. and Ext. Cab – Crew Cab	S/S –/S	S/S –/–
Engine – Vortec 3500 in-line 5-cylinder Horsepower – 220 @ 5600 rpm, Torque – 225 lb.-ft. @ 2800 rpm – Reg. and Ext. Cab – Crew Cab	0/0 –/0	0/0 –/S
Engine block heater	S/S	S/S
Locking differential – rear – Reg. and Ext. Cab – Crew Cab	0/0 –/0	S/S ^{††} –/S
Steering – power, rack-and-pinion	S/S	S/S
Suspension, Z85 Standard – includes independent front with coil springs on 2WD models and torsion bar front suspension on 4x4 models. Both feature a 28 mm front stabilizer bar, rubber jounce bumpers and twin tube shock absorbers	S/S	–/–
Suspension, Z71 Off-Road – includes torsion bar front suspension on both 2WD and 4x4 models, 28 mm front stabilizer bar, urethane jounce bumpers and monotube shock absorbers. Additional 25 mm ride height over Z85 Standard suspension for improved ground clearance	–/–	S/S
Suspension – rear, two-stage multi-leaf springs and solid live axle	S/S	S/S
Transmission – 5-speed manual with overdrive – Reg. and Ext. Cab – Crew Cab	S/S –/S	S/S –/–
Transmission – 4-speed automatic with overdrive – Reg. and Ext. Cab – Crew Cab	0/0 –/0	0/0 –/S
Transfer case – 2-speed, part-time Insta-Trac, with dash-mounted electronic controls (4x4 models)	S/S	S/S
Trailer Special Equipment Package – hitch receiver and wiring harness	0/0	0/0

^{††} 4x4 models.

EXTERIOR

Bed extender – brushed aluminum*	0/0	0/0
Bedliner – moulded plastic*	0/0	0/0
Bed rails – chrome or powder gray (NA with bed rail protectors or tonneau)	0/0	0/0
Bed rail protectors – moulded (NA with bed rails or tonneau)	0/0	0/0
Bumpers – front and rear, chrome with rear step pad	S/S	S/S
Fog lights – front, halogen	0/0	S/S
Glass – Solar-Ray, tinted	S/S	S/S
Glass – deep-tinted, all windows behind front doors	0/S	0/S
Grille – chrome with dark smoke gray bars	S/S	S/S
Hood protector – moulded plastic (smoke or gray)*	0/0	0/0
Mirrors – manual folding and adjustable (Reg. and Ext. Cab)	S/S	S/S
Mirrors – manual folding, power remote control (Crew Cab)	–/S	–/S

EXTERIOR (continued)	Z85 SL/SLE	Z71 SL/SLE
Mouldings – bodyside, dark smoke gray	0/0	0/0
Pickup box – Fleetside, double-wall welded steel with 8 cargo tie-downs	S/S	S/S
Side steps – aluminum assist steps*	0/0	–/–
Side steps – tubular side steps (chrome or brushed aluminum)*	–/–	0/0
Skid Plate Package – includes transfer case skid shield and a composite front underbody splash shield from behind the front bumper to the first cross member (4x4 models)	–/0	S/S
Spare tire – winch-mounted under rear frame, mounted on steel wheel	S/S	S/S
Splash guards – moulded, dark smoke gray*	0/0	S/S
Sport tent*	0/0	0/0
Sport tent air mattress*	0/0	0/0
Sunroof – power, tilt and slide	–/0	–/0
Tailgate – 2-position, locking	S/S	S/S
Tailgate edge protector – moulded*	0/0	0/0
Tires – P205/75R15 all-season (2WD Reg. and Ext. Cab)	S/–	–/–
Tires – P225/75R15 all-season (2WD)	0/S	–/–
Tires – P235/75R15 all-season (4x4)	S/S	–/–
Tires – P265/75R15 on-off road	–/–	S/S
Tonneau cover – hard, folding, lockable (NA with bed rail protector or bed rails)*	0/0	0/0
Tonneau cover – soft (NA with bed rail protector or bed rails)*	0/0	0/0
Tow hooks – 2, front (4x4 models only)	0/0	S/S
Ventvisor – moulded plastic, smoke*	0/0	0/0
Wheels – 15" x 6" steel (A)**	S/–	–/–
Wheels – 15" x 6.5" aluminum (B)**	0/S	–/–
Wheels – 15" x 6.5" aluminum (C)** (4x4 models only)	0/0	–/–
Wheels – 15" x 7" aluminum (D)**	–/–	S/S
Wheel flares – body-coloured, small (4x4 models)	S/S	–/–
Wheel flares – body-coloured, large	–/–	S/S
Window – rear, sliding	0/0	0/0
Windshield wipers – 2-speed with variable delay (intermittent)	S/S	S/S

*Dealer installed accessory. ** Wheels shown on page 23.

INTERIOR

Accents – titanium coloured air outlets, centre stack, door handle bezels and instrument cluster bezels	–/S	–/S
Air conditioning – manual	0/S	0/S
Assist handles – above all outboard seats	S/S	S/S
Console – front centre floor, includes centre storage tray, dual cupholders and rear-hinged storage compartment (Crew Cab)	–/S	–/S
Comfort Convenience Package – includes tilt adjustable steering column and cruise control	S/S	S/S
Floor covering – vinyl (Reg. Cab)	S/–	S/–
Floor covering – colour-keyed carpet with rubber floor mats – Reg. Cab – Ext. and Crew Cab	0/S S/S	0/S S/S
Instrumentation – analogue (includes speedometer, tachometer, odometer, trip odometer, engine temperature and fuel level)	S/S	S/S
Lights – includes side entry/exit and exterior cargo	S/S	S/S
Mirror – day/night adjustable with door-activated dual reading lights	–/S	–/S
Mirror – electrochromic auto-dimming with dual reading lights, compass and exterior temperature display	–/0	–/0
Power Convenience Package – includes power windows, exterior rear-view mirrors, remote keyless entry, programmable power door locks and content theft alarm – Reg. and Ext. Cab – Crew Cab	–/0 –/S	–/0 –/S
Power outlets – 2 auxiliary	S/S	S/S
Steering wheel – 4-spoke	S/S	–/–
Steering wheel – leather-wrapped	–/–	S/S
Sunshades – LH and RH padded with passenger-side vanity mirror	S/S	S/S

SEATS	Z85 SL/SLE	Z71 SL/SLE
Front 60/40 cloth divided bench , outboard head restraints and dual cupholders (Reg. and Ext. Cab)	S/-	S/-
Front reclining 60/40 Deluxe cloth divided bench , outboard head restraints, armrest with storage and dual cupholders - Reg. and Ext. Cab - Crew Cab (deletes centre floor console)	-/S -/O	-/S -/O
Front reclining Deluxe cloth bucket seats , centre floor console with storage, armrest and dual cupholders - Reg. and Ext. Cab - Crew Cab	-/O -/S	-/O -/S
Front reclining heated leather-appointed bucket seats , driver and front-passenger power seat adjusters and centre floor console with storage, armrest and dual cupholders (Ext. and Crew Cab)	-/O	-/O
Rear flat-folding jump seats , forward facing with under-seat storage compartment (Ext. Cab)	S/S	S/S
Rear-seat delete (Ext. Cab)	O/-	O/-
Rear 60/40 divided back , flat-folding bench seat (Crew Cab)	-/S	-/S

SOUND SYSTEMS

Electronically tuned AM/FM stereo with seek/scan and digital clock	S/-	S/-
2 speakers in Reg. Cab/4 speaker in Ext. Cab	S/-	S/-
4 speakers in Reg. Cab/6 speakers in Ext. and Crew Cab	-/S	-/S
Electronically tuned AM/FM stereo with seek/scan, CD player, MP3 playback, Radio Data System (RDS), auto tone control, TheftLock, speed-compensated volume control and digital clock	O/S	O/S
Electronically tuned AM/FM stereo with seek/scan, 6-disc CD changer, Radio Data System (RDS), auto tone control, TheftLock, speed-compensated volume and digital clock	-/O	-/O

S – Standard. O – Optional individually or in combination with other optional equipment. Note: The trim features indicated reflect only a portion of the total content of each trim level. See your Sales Consultant for complete listings, current availability and compatibility.

A word about this brochure

Some of the equipment shown or described throughout this brochure may be available at extra cost. We have tried to make this brochure comprehensive and factual. We reserve the right, however, to make changes at any time, without notice, in prices, colours, materials, equipment, specifications, models and availability. Specifications, dimensions, measurements, ratings and other numbers in this brochure and other printed materials provided at the dealership or affixed to vehicles are approximates based upon design and engineering drawings and prototypes and laboratory tests. Your vehicle may differ due to variations in manufacture and equipment. Since some information may have been adapted since the time of the printing, please check with your GMC dealer for complete details. General Motors of Canada Limited reserves the right to lengthen or shorten the model year for any product, for any reason, or to start and end model years at different times.

Privacy Statement

At General Motors of Canada Limited ("GM Canada") we respect your privacy and value our relationship with you. Your personal information will be protected, will never be sold, and will be used only by GM Canada, our affiliates, dealers/retailers, and service suppliers (only to provide services). If you wish to be removed from GM Canada marketing communications; would like to limit only certain marketing communications from us; would like a listing of our specific uses or further information about those with whom your information is shared; or for further information about our Privacy Policy and practices, please contact us at 1-800-GM-DRIVE (1-800-463-7483) or through our Web site at gmcanada.com

A word about assembly

GMCs are equipped with engines and components produced and assembled by different operating units of General Motors, its subsidiaries and suppliers and these engines and components may change or be obtained from different sources from time to time. All such engines and components are approved for use in GMCs. Certain equipment ordered may be unavailable at the time of assembly and we suggest that you verify that your vehicle includes the equipment you ordered, or if there are changes, that they are acceptable to you.

Trademarks

The marks appearing in this GMC Canyon brochure including, but not limited to: General Motors, GM, the GM Canada emblem, the GM Canada Web site address, the GM Accessories logo, GMC, the GMC logo, Canyon, Envoy, Savana, Sierra, Yukon, and their respective logos, emblems, slogans and vehicle model names and body designs; and other marks such as PASSLock, SMARTLEASE, Solar-Ray, TOTAL Warranty and Vortec are all trademarks of General Motors Corporation and/or General Motors of Canada Limited, its subsidiaries, affiliates or licensors.

GMAC is a registered trademark of the General Motors Acceptance Corporation.

TheftLock is a registered trademark of Delphi Automotive Systems.

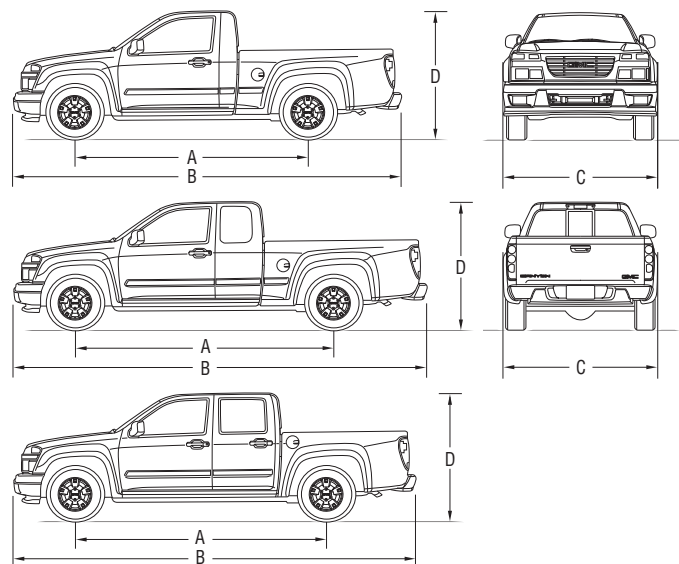
Radio Data System (RDS) is a registered trademark of the U.S. National Association of Broadcasters.

Copyright

©Copyright 2005 General Motors of Canada Limited. All Rights Reserved. All text, images, graphics, and other materials in this GMC Canyon brochure are subject to the copyright and other intellectual property rights of General Motors Corporation and/or General Motors of Canada Limited. These materials may not be reproduced, distributed or modified without the express written permission of General Motors Corporation and/or General Motors of Canada Limited.

Printed in Canada, August 2005.

DIMENSIONS



EXTERIOR, mm (in.)	Regular Cab	Extended Cab	Crew Cab
Wheelbase (A)	2827 (111.3)	3200 (126.0)	3200 (126.0)
Length (B)	4897 (192.8)	5260 (207.1)	5260 (207.1)
Width (C) – Z85 2WD	1717 (67.6)	1717 (67.6)	1717 (67.6)
– Z85 4x4	1742 (68.6)	1742 (68.6)	1742 (68.6)
Height (D) [†] – Z85 2WD	1648 (64.9)	1648 (64.9)	1656 (65.2)
– 4x4	1717 (67.6)	1717 (67.6)	1725 (67.9)

INTERIOR, mm (in.) front/rear

Headroom	1006/- (39.6/-)	1006/963 (39.6/37.9)	1006/973 (39.6/38.3)
Legroom	1072/- (42.2/-)	1072/587 (42.2/23.1)	1072/884 (42.2/34.8)
Shoulder room	1450/- (57.1/-)	1450/1453 (57.1/57.2)	1450/1450 (57.1/57.1)
Hip room	1354/- (53.3/-)	1354/1463 (53.3/57.6)	1354/1344 (53.3/52.9)

CARGO BOX DIMENSIONS, mm (in.)

Length	1849 (72.8)	1849 (72.8)	1552 (61.1)
Inside width @ wheelhousing	1082 (42.6)	1082 (42.6)	1082 (42.6)
Inside height	472 (18.6)	472 (18.6)	472 (18.6)

CAPACITIES

GVWR, max. kg (lb.)	2336 (5150)	2404 (5300)	2404 (5300)
Payload, max. kg (lb.) [*]	702 (1547)	695 (1532)	607 (1338)
Towing, max. kg (lb.) ^{††}	1814 (4000)	1814 (4000)	1814 (4000)
Fuel, L (imp. gal.)	72 (15.8)	72 (15.8)	72 (15.8)

[†] Not including roof rack. Add 25 mm (1.0 in.) in height to Z71 models.

^{*} Payload includes passengers, equipment and cargo. Payloads are approximate and will change with the addition of optional aftermarket equipment. Consult your dealer or equipment supplier for details.

^{††} Trailer ratings are calculated using an automatic transmission, Vortec 3500 engine and assuming only the driver is in the tow vehicle. Trailer Weight (also called Trailer Towing Capacity) is the weight of a trailer, its load or contents plus any other weight added to the tow vehicle. Ratings shown are for ball-hitch applications. For details, ask your Sales Consultant for a copy of the Trailing with GMC Trucks brochure. Many trailer towing applications require additional optional equipment.

COLOURS. FABRICS. WHEELS.

CANYON EXTERIOR COLOURS



59 Silver Birch Metallic

74 Fire Red

50 Summit White

EXTERIOR/INTERIOR COLOUR COMPATIBILITY

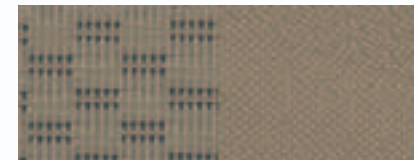
Exterior	Interior		
	SLE 31 – Light Cashmere	SLE 69 – Very Dark Pewter	SL 92 – Medium Pewter
22 – Superior Blue Metallic	•	•	•
41 – Onyx Black	•	•	•
43 – Flame Yellow [†]	•	•	•
46 – Stealth Gray Metallic	•	•	•
50 – Summit White	•	•	•
59 – Silver Birch Metallic	•	•	•
74 – Fire Red	•	•	•
85 – Sunburst Orange Metallic	•	•	•
94 – Dark Cherry Red Metallic	•	•	•

[†]Premium colour – available at extra cost.

CANYON INTERIOR FABRICS



Base Cloth shown in 92D – Medium Pewter, standard on SL models.



Deluxe Cloth shown in 31H – Light Cashmere standard on SLE models. Also available in 69H – Very Dark Pewter.



Leather shown in 69Z – Very Dark Pewter, available on SLE Extended and Crew Cabs. Also available in 31Z – Light Cashmere.

COMMITMENT

We're committed to engineering and manufacturing GMC Canyon so that it is an absolute pleasure to drive. And that's just the beginning. We're also committed to making the ownership experience just as responsive to your specific needs. You'll find that our comprehensive support programs make it easier to purchase or lease a GMC. They also help to protect you and your vehicle down the road. A powerful example of the level of protection you can expect is the GM TOTAL™ Warranty. It's so thorough it covers everything from the roof right down to the tires. So when you drive off the lot of your GMC dealership, you can do so with total confidence. Peace of mind is knowing that your vehicle is built for the long haul, and is backed by a comprehensive warranty.

THE GM TOTAL™ Warranty:[‡]

The GM TOTAL™ Warranty is your promise of total warranty protection. It covers every new GMC Canyon for 3 years or 60,000 km*. Complete vehicle repairs are covered,** including parts and labour, with no deductible. The warranty includes:

- 3-year/60,000 km* complete vehicle repair coverage
- 6-year/160,000 km* corrosion perforation coverage
- 8-year/130,000 km* coverage on catalytic converters and powertrain control modules (PCMs).

*Whichever comes first.

**To correct any defects in material or workmanship occurring during the warranty period. Regular maintenance is not included, nor is excessive wear and tear caused by reckless or negligent driving.

OTHER OWNERSHIP PRIVILEGES AND PROGRAMS:[‡]

- **Roadside Assistance** – 24/7 service via toll-free number during your warranty period, anywhere in Canada or the United States
- **Courtesy Transportation** – may be offered during the warranty period
- **GM Protection Plan (GMPP)** – the only extended services contract backed by the resources and commitment of General Motors, GMPP may be purchased at the time of your sale or lease, or subsequently

- **GM Mobility Program** – you may be eligible for reimbursement of up to \$1000 (taxes included) for adaptive equipment for your GM vehicle
- **GM Accessories** – personalize your vehicle with GM Accessories, specifically engineered for your new GM vehicle
- **GM Goodwrench Service** – with GM-certified technicians and GM-approved parts, nobody knows your GM vehicle better.

TO HELP YOU PURCHASE OR LEASE A NEW VEHICLE:

- **GMAC Financing** – on the spot financing at your GM dealership^{††}
- **GMAC SMARTLEASE** – a smart alternative to traditional financing^{††}
- **GM Student Bonus Program** – GM will cover the first two purchase finance or lease payments and the lease security deposit on eligible new GM vehicles for students and recent graduates of high school, college or university^{††}
- **The GM Card** – eligible cardholders may be able to redeem up to \$3500 on GM Card® Earnings toward the total purchase price or lease down payment on selected vehicles. For more information on The GM Card please call 1-800-461-3279.[†]

INFORMATION RESOURCES:

You can find more information about these programs from your GM dealer, or at these information centres:

- The GM Web site at gmcanada.com
- The GM Customer Communication Marketing Centre at 1-800-GM-DRIVE (1-800-463-7483 or 1-800-263-3830 for TDD users) – for information about any GM product or service, including The GM Card and the GM Mobility Program
- For information about GMAC visit gmcanada.com or call 1-800-616-4622.

[†]Conditions and limitations apply.

^{††}Subject to eligibility.



Colours may not be exactly as illustrated due to restrictions of the printing process. Please see your Sales Consultant for specific colour and model availability and compatibility.

46 Stealth Gray Metallic



94 Dark Cherry Red Metallic



41 Onyx Black



22 Superior Blue Metallic



43 Flame Yellow*



85 Sunburst Orange Metallic



CANYON WHEELS



A – 15" x 6"
Steel wheel. Standard on SL Reg. and Ext. Cab models with Z85 Standard suspension.



B – 15" x 6.5"
Aluminum. Available on SL and standard on SLE models with Z85 Standard suspension.



C – 15" x 6.5"
Aluminum. Available on 4x4 SL and SLE models with Z85 Standard suspension.



D – 15" x 7"
Aluminum. Standard on SL and SLE models with Z71 Off-Road suspension.



CANYON



SIERRA



ENVOY



YUKON



SAVANA

A STORY ONLY GENERAL MOTORS CAN TELL.

General Motors' commitment to setting the highest standards in quality, safety, innovation, and fuel efficiency are matched by an equally strong commitment to the community.

DID YOU KNOW?

QUALITY: GM plants swept the J.D. Power Initial Quality Study^{SM*} rankings for North and South America: Gold and Silver Plant Quality Awards for the Canadian Oshawa #2 and #1 car plants, in addition to the Bronze Plant Quality Award for the Hamtramck, Michigan plant.

SAFETY: General Motors is the only automotive manufacturer committed to offering a full range of cars, trucks, and SUVs that provide safety protection before, during and after a collision. GM vehicles are equipped with a range of features and technologies that help drivers avoid collisions, reduce the risk of injury should a collision prove unavoidable, and help you get the assistance you need after a collision.

INNOVATION: GM is at the forefront of automotive technology with breakthrough features such as OnStar and XM Satellite Radio.

FUEL EFFICIENCY: GM offers more cars than any other automaker in Canada that get better than 7.0 L/100 km in highway driving. GM has also won more EnerGuide fuel-efficiency awards than any other car company.

GM IS COMMITTED TO CANADA.

INVESTMENT: GM invests more in Canada than any other car company: The \$2.5 billion Beacon Project represents the largest automotive investment in Canadian history.

EMPLOYMENT: GM directly employs over 20,000 people in Canada – more than any other car company.

DESIGN: GM is the only car company that designs, engineers and builds cars in Canada.

GM IS BEHIND YOU AND YOUR VEHICLE.

GM is equally comprehensive in the way it backs its GMC vehicles. All GMC models include:

- **3-year/60,000 km** complete vehicle repair coverage**
- **6-year/160,000 km** corrosion perforation coverage**
- **8-year/130,000 km** coverage on catalytic converters and powertrain control modules (PCMs)**
- **3-year/60,000 km** 24-hour Roadside Assistance.**

*General Motors Corporation – Oshawa #2 (Ontario – Car) was the highest ranked plant, Oshawa #1 (Ontario) was the second ranked plant and Hamtramck, MI was the third ranked plant in North/South America among plants producing vehicles for the U.S. market in J.D. Power and Associates 2005 U.S. Initial Quality StudySM. Study based on a total of 62,251 U.S. consumer responses indicating owner reported problems during the first 90 days of ownership. www.jdpower.com

**Whichever comes first.



Canada 

CHEVROLET PONTIAC BUICK GMC CADILLAC SATURN SAAB HUMMER

GMC BUILDING LEGENDS

gmcanada.com