

ACCLAIM

PLYMOUTH



P L Y M O U T H

Safety is Acclaim's most important feature

Your car should help protect you wherever you go. Plymouths do. We've received numerous letters from owners across the country attesting to the fact that our air bags help save lives.

Driver-side air bag helps protect you from injury caused by frontal impact. Air bags are standard on all Acclaim models.

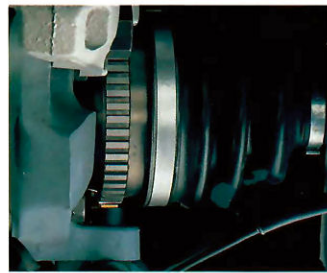
Three-point Unibelt restraint system includes standard lap- and-shoulder belts for all outboard front- and rear-seat passengers.



Simulated air bag deployment shown.



Five-mph energy-absorbing standard double-protection bumpers, help absorb front- and rear-end forces in the event of a collision.



New four-wheel antilock disc brakes, available on all Acclaim models, mean sure stopping power and steering control during hard braking.

Child-protection rear door locks, standard, safeguard your most precious cargo.

Power door locks option conveniently locks and unlocks doors for added security.

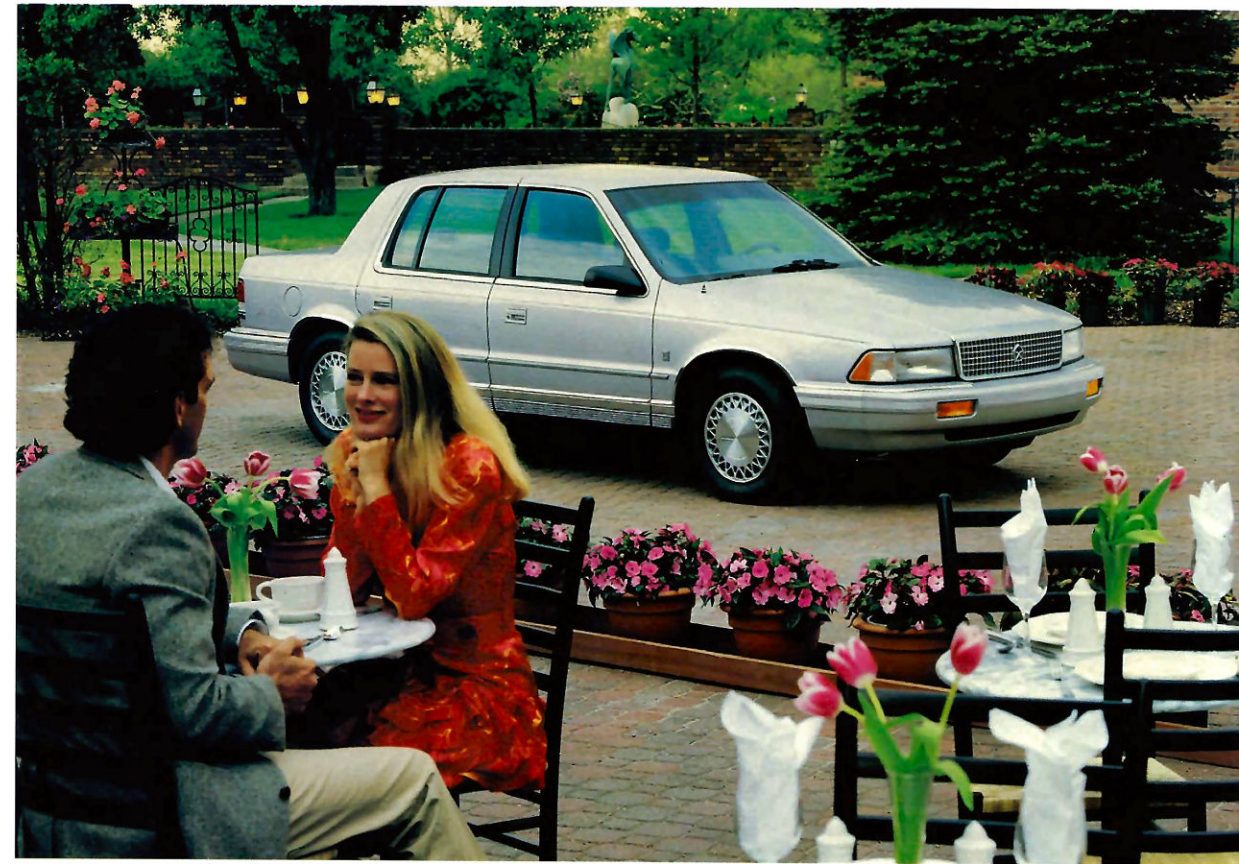


New Visorphone puts the security of the latest hands-free cellular phone technology at your fingertips. A dealer-installed option on all Acclaim models. (See page 21 for additional information.)

Side-door beams offer extra occupant protection from side impacts, standard on all Acclaim models.



Advantage: Plymouth Safety.



Sophisticated, powerful, gratifyingly comfortable

About this catalog. We have tried to make this catalog as complete as possible. However, since the time of printing, some of the information you'll find here may have been updated. Your dealer has details, and you should ask him for current information before ordering.

Some of the equipment shown or described throughout this catalog is available at extra cost.



Acclaim LX, shown right in Sapphire Blue Satin Glow Clear Coat.

High praise. The nation's automotive journals have raved about Plymouth Acclaim, the midsize family sedan with one of the most spacious rear passenger compartments in its class, and exceptional value for the money. Acclaim offers luxury and smooth styling, standard driver-side air bag, available V6 power, and optional six-passenger seating comfort. Acclaim LX delivers a truly complete array of standard features. Advantage: Plymouth. Acclaim for 1991 . . . a great role model for the competition.

A C C L A I M



A C C L A I M

L X



***Plymouth Acclaim LX
high marks for luxury
with impressive value***

Accclaim LX welcomes you to the top of the line, with luxurious interior appointments such as the ergonomically designed instrument panel (shown left); full analog instrumentation; a standard tilt steering column and leather-wrapped luxury steering wheel with electronic speed control switches. Also standard is a full-floor center console (not shown) with cassette storage, storage bin, and cup holders for front- and rear-seat passengers; plus the added reassurance of a driver-side air bag integral with the steering wheel, and child-protection rear door locks (not shown), to protect your most prized possessions. Plymouth Acclaim gives you outstanding value, thanks to its affordable price and more than 50 standard features. Advantage: Plymouth.

A C C L A I M L X



Acclaim LX interior the inside track on roominess and comfort

The spacious Acclaim LX interior gives you a lot to like, including the comfort of supportive cloth with vinyl trim low-back reclining front bucket seats and two-way adjustable head restraints, shown left in Slate Blue. For six-passenger seating capacity, choose the optional 50/50 split bench seat, shown above in Medium Quartz. Acclaim provides more than three feet of rear-seat leg room so even six-footers can stretch out. Advantage: Plymouth. Acclaim LX luxury conveniences include available overhead console, dual illuminated visor vanity mirrors, cupholders, storage bins, and more.

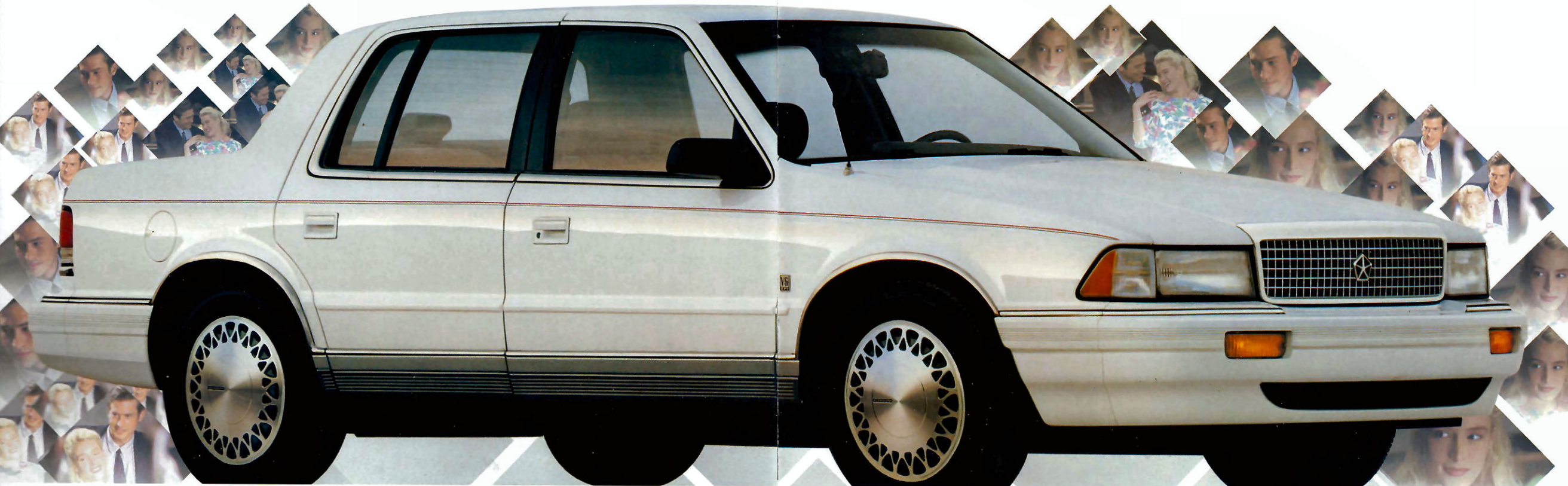
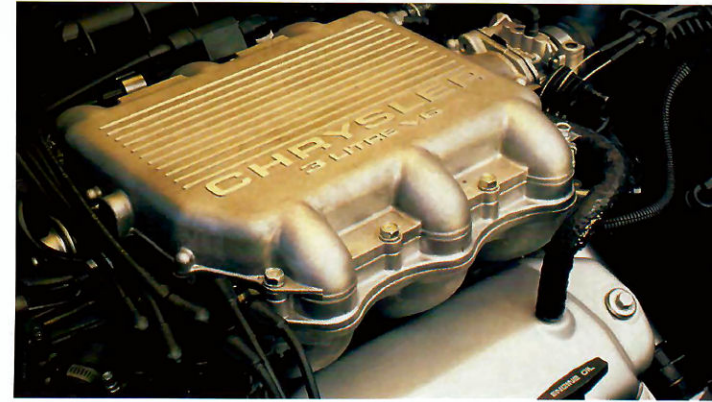
A C C L A I M

L E

***Plymouth Acclaim LE
the power to stir you,
a ride to relax you***

Accclaim LE has the spirit and road-handling instincts to meet any driving situation. New steering and suspension improvements mean quicker handling response. You'll cruise in a comfortable, controlled ride, thanks to standard position-sensitive gas-charged front struts and gas-charged rear shock absorbers. Acclaim's smooth, efficient available

3.0-liter overhead cam (OHC) MPI V6 engine* (shown right) delivers brisk acceleration with 141 horsepower and 171 pound-feet of torque. Advantage: Plymouth. (See page 18 for complete engine details.) And optional new power-assisted four-wheel antilock disc brakes help you stop as well as you go. Acclaim LE, shown below in Bright White Clear Coat.

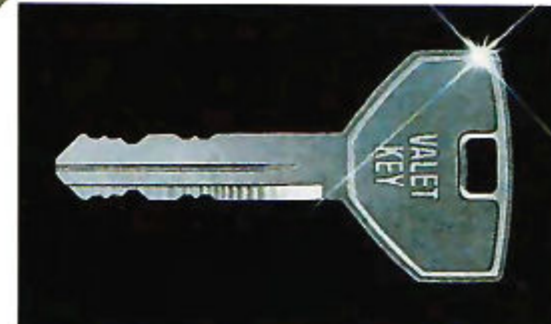


*Built by Mitsubishi Motors Corporation.

F E A T U R E S



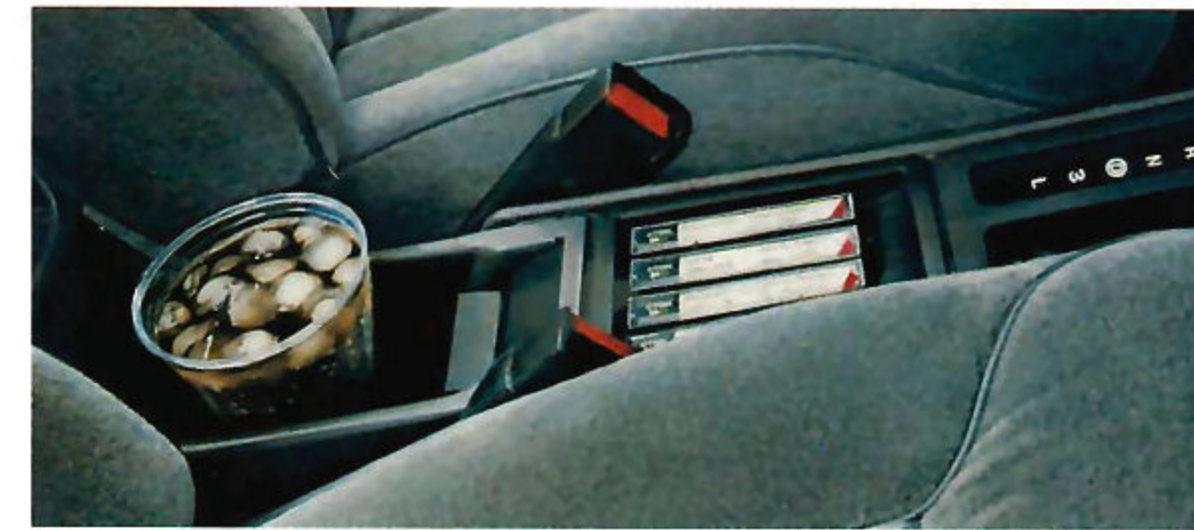
A **low liftover trunk** design with high-opening lid (shown left) means easy cargo loading. Cargo space is 14.4 cubic feet.



Reversible valet key operates only door and ignition locks. Separate reversible master key operates all the car's locks.



Dual fold-out cup holders are mounted in the center console for the convenience of rear-seat passengers. Standard on Acclaim LX and LE, optional on Acclaim.



The **center console** provides handy storage for cassette tapes and other articles. Cup holders for front- and rear-seat passengers are also located in the console. Standard on Acclaim LX and LE, available on Acclaim.

A **five-speed manual transaxle** with overdrive fifth gear for quiet, economical cruising is standard on Acclaim. The center console is integral with the five-speed shifter and offers convenient storage for the front passenger compartment.



Convenient **split fold-down rear seatbacks** permit handy storage of lengthy cargo or let you restrict trunk access for secure storage. Standard on Acclaim LX and LE models, and available on Acclaim only in the Premium Equipment Package. **Combination lap-and-shoulder seat belts** for outboard rear-seat passengers provide an extra margin of safety and are standard on all Acclaim models.



AM/FM stereo radio/cassette tape player with four speakers and integral digital clock is standard on Acclaim LX, optional on Acclaim and Acclaim LE. (See page 21 for complete sound system details.)

Acclaim's **five-mph double-protection bumper system** exceeds federally mandated crash impact standards.

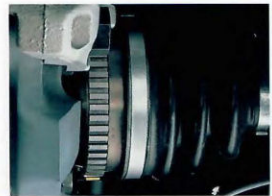


Acclaim, shown left in Claret Red Pearl Coat.

O P T I O N S



Overhead console. New for 1991, this modern cockpit-style unit offers many conveniences including electronic compass/outside temperature readouts, front and rear independent map lights, sunglasses storage bin, and garage door opener storage compartment. Available only in the optional Overhead Convenience Package, on Acclaim LX and LE models only.



Four-wheel antilock brake feature is available on all Acclaim models for the first time when you order four-wheel power-assisted disc brakes. This advanced technology helps maintain directional stability and steering control during hard braking and on slippery roads.



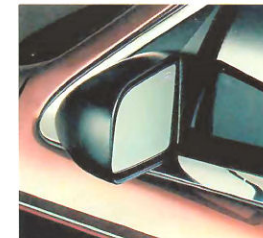
Chrysler Infinity I Sound System gives you AM stereo*/FM stereo radio/electronic cassette tape player with tape program music search, seek-and-scan tuning, eight vehicle-equalized speakers in four locations, and integral digital clock. Optional on all Acclaim models.



Chrysler Infinity II Sound System—A superb audio system for optimum listening enjoyment. Controls have been simplified for easier operation. Includes AM stereo*/FM stereo radio with electronic cassette tape player and tape program music search, seek-and-scan tuning, five-band electronic graphic equalizer, eight vehicle-equalized speakers in four locations, and integral digital clock. Optional on Acclaim LX and LE only.



Fourteen-inch cast aluminum road wheels (set of four) are available on Acclaim and Acclaim LE. (Requires P195/70R14 all-season touring radial tires on base Acclaim.)



Dual heated power remote control outside mirrors prevent ice and condensation from obstructing the rearward view. Mirrors adjust easily and precisely for safe driving. Available in packages on all Acclaim models.

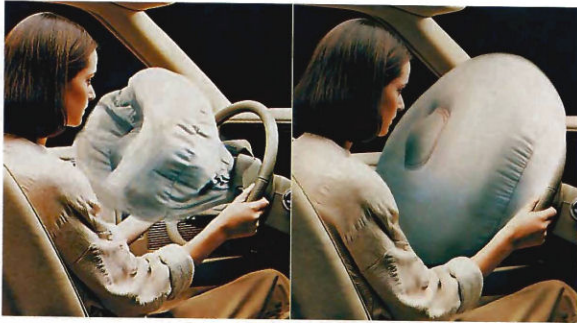


New Visorphone features today's most advanced cellular technology. Engineered for Chrysler-built vehicles, it's uniquely integrated with the driver's sun visor. Flip it down to call, up to talk. Features one-touch dialing and hands-free operation. Available on all Acclaim models. (Dealer installed, see page 21 for additional information.)



*Some AM stereo broadcasting may not be compatible with this radio.

S A F E T Y • E N G I N E E R I N G



Simulated air bag deployment shown.

Plymouth's commitment to **driver and passenger safety** is underscored by Acclaim's important safety engineering features, such as

1 The standard **driver-side air bag supplemental restraint system** helps protect you from injury. Chrysler Corporation earned last year's Allstate Safety Leadership Award in recognition of its leadership position in the application of driver-side air bags. (See page 18 for complete safety features.)

2 Five-mph energy-absorbing **double-protection bumpers**, standard, afford added protection against front- and rear-end impacts.

3 **New four-wheel antilock brake system (ABS)**, available with power-assisted four-wheel disc brakes, means sure, safer stops, especially on slippery surfaces, and improved steering control during braking.

4 **Lap-and-shoulder Unibelts**, standard at front and rear outboard seating positions, give essential protection to drivers and passengers.

5 **Child-protection rear door locks**, standard, provide additional safety for the children in the family.

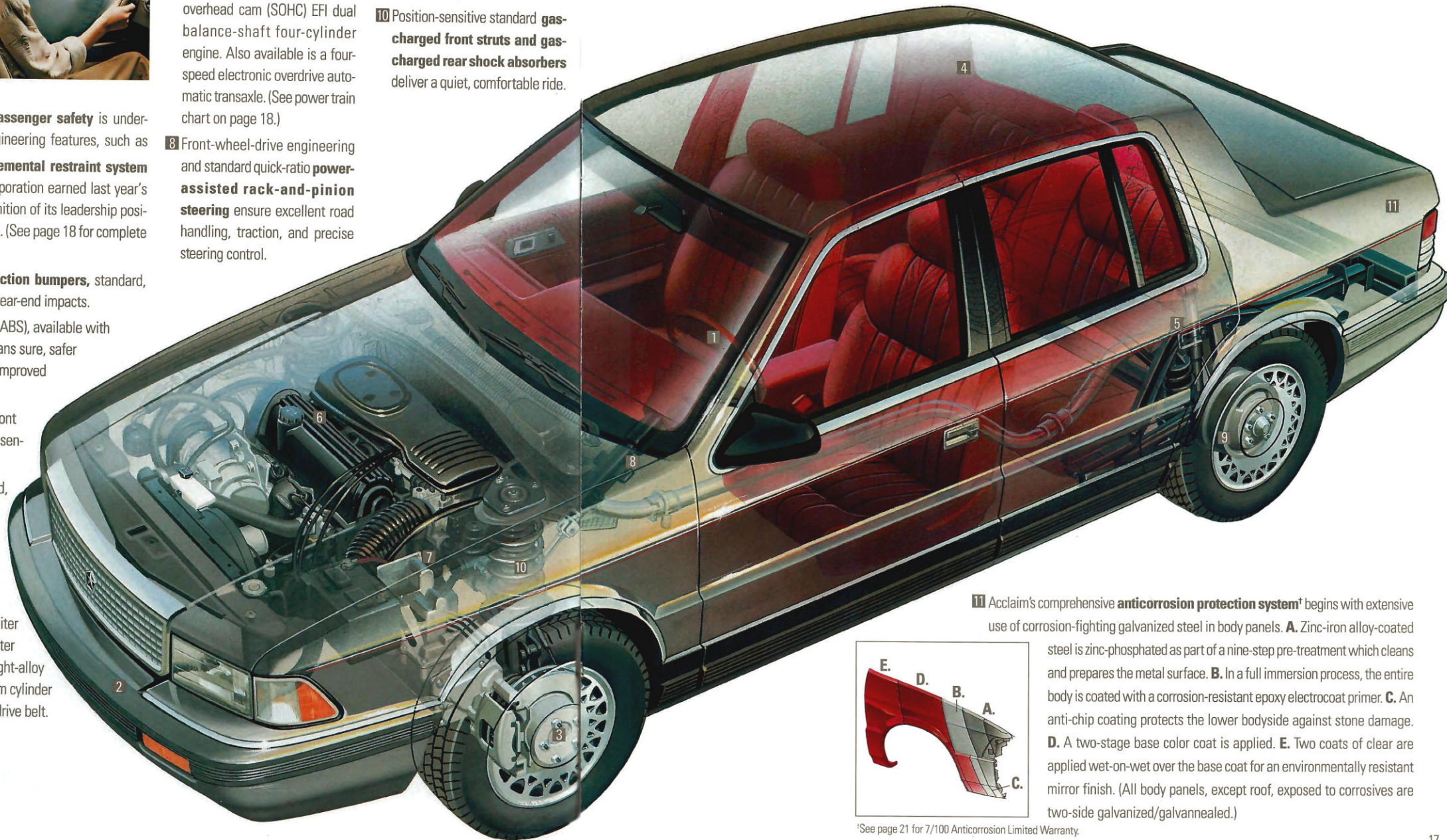
6 Choose from Acclaim's lively standard **2.5-liter single overhead cam (SOHC) EFI dual balance-shaft engine** or the extra power and acceleration of the available 3.0-liter OHC MPI V6* (shown on page 11). The 3.0-liter V6 offers contemporary features such as a light-alloy cast iron block, high-tech light-alloy aluminum cylinder heads, and a long-life serpentine accessory drive belt.

7 **TorqueFlite three-speed automatic transaxle** is proven for smooth, effortless, efficient shifting. Standard on Acclaim LE and optional on Acclaim with the standard 2.5-liter single overhead cam (SOHC) EFI dual balance-shaft four-cylinder engine. Also available is a four-speed electronic overdrive automatic transaxle. (See power train chart on page 18.)

8 Front-wheel-drive engineering and standard quick-ratio **power-assisted rack-and-pinion steering** ensure excellent road handling, traction, and precise steering control.

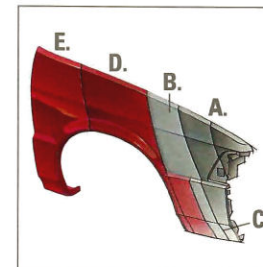
9 **Power-assisted vented front disc and self-adjusting rear drum brakes** mean dependable stopping ability. Master cylinder has two separate circuits for added safety.

10 Position-sensitive standard **gas-charged front struts and gas-charged rear shock absorbers** deliver a quiet, comfortable ride.



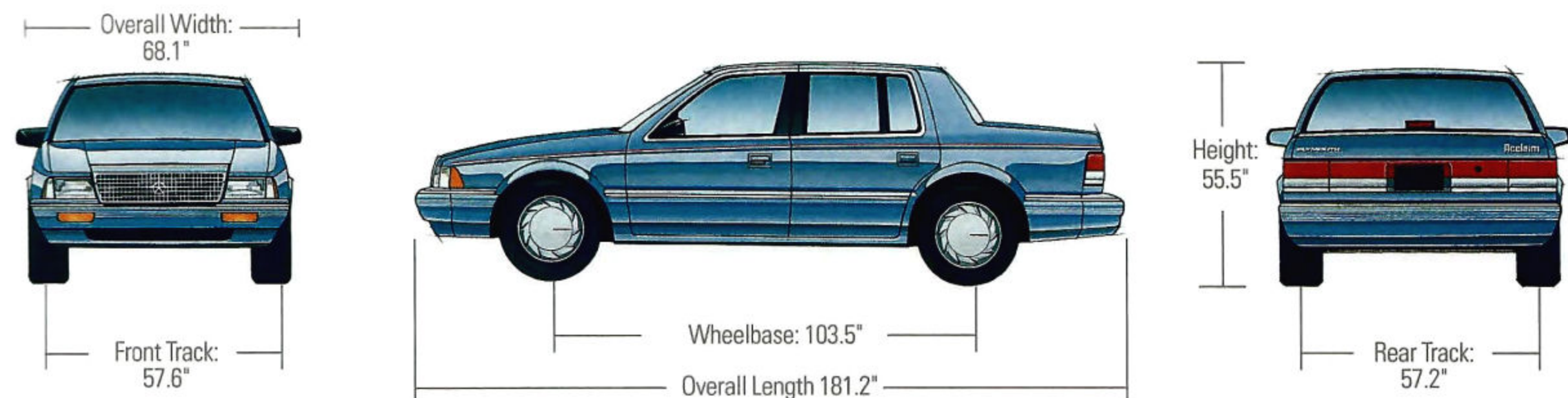
11 Acclaim's comprehensive **anticorrosion protection system*** begins with extensive use of corrosion-fighting galvanized steel in body panels. **A.** Zinc-iron alloy-coated steel is zinc-phosphated as part of a nine-step pre-treatment which cleans and prepares the metal surface. **B.** In a full immersion process, the entire body is coated with a corrosion-resistant epoxy electrocoat primer. **C.** An anti-chip coating protects the lower bodyside against stone damage.

D. A two-stage base color coat is applied. **E.** Two coats of clear are applied wet-on-wet over the base coat for an environmentally resistant mirror finish. (All body panels, except roof, exposed to corrosives are two-side galvanized/galvannealed.)



*See page 21 for 7/100 Anticorrosion Limited Warranty.

ACCLAIM DIMENSIONS



SPECIFICATIONS

Head Room	— Front	38.4"	Trunk Capacity (estimated)	14.4 cu ft
	— Rear	37.9"		Turning Diameter—Curb-to-Curb Acclaim and Acclaim LE Acclaim LX
Leg Room	— Front (max.)	41.9"	Curb Weight with Standard Engine (estimated)	
	— Rear (min.)	38.3"		
Hip Room	— Front	51.7"		
	— Rear	52.0"		
Shoulder Room	— Front	54.3"		
	— Rear	55.0"		

STANDARD SAFETY FEATURES

- Air bag, driver-side
- Antitheft trunk lock
- Backup lights
- Brake fluid pressure loss warning light (also serves as parking brake indicator)
- Child-protection rear door locks
- Combination lap/shoulder belts for the driver, right front passenger, and outside rear passengers; lap belts for all others; includes provision for child seat tethers
- Double ball-joint rearview mirror mount
- Dual diagonal braking system with separate brake fluid reservoirs in the master cylinder
- Electric windshield washers and wipers
- Energy-absorbing front seatbacks
- Energy-absorbing instrument panel and sun visors
- Fade-resistant front vented disc brakes
- Five-mph Double Protection bumper system
- Front seat head restraints
- Glare reduction measures for instrument panel, steering wheel, windshield wipers, windshield header and roof
- Hazard warning flasher system
- Headlight and wiper circuit breakers with automatic reset
- Ignition and steering column lock
- Impact-actuated fuel supply shutdown relay
- Inside and outside rearview mirrors
- Interlocking door latches
- Key left in ignition warning
- Non-override door locks (except driver's door)
- Recessed inside door release handles
- Reinforced windshield header and roof
- Resilient window crank knobs
- Safety glass
- Safety-Rim wheels
- Seat belt reminder system
- Side door beams
- Side marker lights and/or reflectors
- Squeeze glove box latch
- Supplemental center high-mounted stoplight
- Turn signals with lane-change feature and flashing front side marker lights

POWER TRAIN CHART¹

TYPE	DISPLACEMENT	BORE & STROKE	COMPRESSION RATIO	HORSEPOWER/TORQUE		TRANSAXLE AVAILABILITY
				SAE NET @ RPM		
4-cylinder SOHC EFI engine	2.5-liter (153 CID)	3.44" x 4.09"	8.9:1	100 hp @ 4,800	135 lb-ft @ 2,800	5-speed close-ratio manual overdrive (2.51 OTGR): standard on Acclaim; 3-speed automatic ² (3.02 OTGR): standard on Acclaim LE; optional on Acclaim
6-cylinder OHC multipoint EFI engine ³	3.0-liter (181.4 CID)	3.59" x 2.99"	8.9:1	141 hp @ 5,000	171 lb-ft @ 2,800	4-speed automatic ⁴ (2.52:1 OTGR): standard on Acclaim LX; available on Acclaim ⁴ and Acclaim LE

¹OTGR—Overall top gear ratio.

²Emissions controls and testing required at extra cost on all vehicles registered in California. Not available otherwise.

³Includes electromechanical lockup torque converter.

⁴Built by Mitsubishi Motors Corporation.

⁵P195/70R14 tires required (set of 4).

ENGINES



2.5-LITER SOHC EFI DUAL BALANCE-SHAFT ENGINE

Acclaim and Acclaim LE's standard 2.5-liter SOHC EFI four-cylinder engine includes electronic ignition, electronic fuel injection and voltage regulator, plus a smooth-running single overhead camshaft, roller tappets, and dual counter-rotating balance shafts to help dampen and cancel vibration. Choose the manual five-speed overdrive transaxle or a three-speed automatic. (Three-speed automatic standard on Acclaim LE.)



3.0-LITER OHC V6 MPI ENGINE*

Available on Acclaim and Acclaim LE, and standard on Acclaim LX, the smooth, powerful 3.0-liter OHC MPI V6 engine includes overhead camshaft, multipoint electronic fuel injection, and is coupled with the computer-controlled four-speed automatic overdrive transaxle.
*Built by Mitsubishi Motors Corporation.

OPTIONS PACKAGES

	ACCLAIM	ACCLAIM LE	ACCLAIM LX
Super Discount Package "A"	0	NA	NA
Super Discount Package "B"	0	NA	NA
Super Discount Package "C"	NA	0	0
Overhead Convenience Package	NA	0	0
Deluxe Equipment Discount Package	0	S	S
Premium Equipment Discount Package	0	S	S

0—Optionally available. S—Standard equipment. NA—Not Available.

OPTIONS PACKAGE DESCRIPTIONS

SUPER DISCOUNT PACKAGE "A" (Acclaim only)

- Air conditioning with manual temperature control and bi-level ventilation
- Electric rear window defroster* (required on all passenger vehicles registered in New York state)
- Two additional rear-mounted speakers
- Tinted glass

SUPER DISCOUNT PACKAGE "B" (Acclaim only)

- Includes contents of Super Discount Package "A", plus dual heated power remote control mirrors, power door locks and power windows.

SUPER DISCOUNT PACKAGE "C" (Acclaim LE and LX only)

- Air conditioning, dual heated power remote control mirrors, power door locks and power windows.

OVERHEAD CONVENIENCE PACKAGE (Available on Acclaim LE and LX only)

- Overhead console
- Front and rear reading lights
- Electronic compass and outside temperature readouts
- Sunglasses and garage door opener storage
- Dual illuminated vanity mirrors

DELUXE CONVENIENCE DISCOUNT PACKAGE (Acclaim only)

- Electronic speed control
- Front and rear carpeted floor mats
- Tilt steering wheel column

PREMIUM EQUIPMENT DISCOUNT PACKAGE (Acclaim only)

- Split fold-down rear seatback
- Graphic message center: includes warning lights for door ajar; headlight, stoplight or taillight out; low windshield washer fluid; deck lid ajar
- Light package: includes lights for cigar lighter, roof-mounted map light, and underhood lights
- Premium body sound insulation

*Available as an independent option.

Specifications subject to change or improvement without notice. Certain models, packages and options are subject to specific restrictions, requirements or late availability. See your dealer for latest ordering information.

TRAILER TOWING CAPACITIES

ENGINE	TRANSAXLE	TOWING CAPACITY
2.5-liter four-cylinder	5-speed manual	1,000 lb
2.5-liter four-cylinder	3-speed automatic	2,000 lb
3.0-liter six-cylinder	4-speed automatic	2,000 lb

COLOR/TRIM COMBINATIONS

EXTERIOR	INTERIOR
Claret Red Pearl Coat**†	Bordeaux Medium Quartz
Black Cherry Pearl Coat†	Bordeaux Champagne/ Medium Champagne
Light Champagne Metallic Clear Coat**†	Champagne/ Medium Champagne
Sapphire Blue Satin Glow†	Slate Blue
Light Blue Satin Glow*	Slate Blue
Dark Quartz Gray Metallic Clear Coat*	Bordeaux Medium Quartz
Platinum Silver Metallic Clear Coat**†	Bordeaux Slate Blue Medium Quartz
Bright White Clear Coat	Bordeaux Slate Blue Champagne/ Medium Champagne Medium Quartz

**Not available on Acclaim LX

†Extra Cost

All exterior colors have a Clear Coat finish.

Note: All Acclaim LE and LX models have a Medium Quartz Clear Coat finish on lower body side cladding. Acclaim LX also features the same color on lower front and rear fascias.

TIRES

SIZE	TYPE (SET OF FOUR)	AVAILABILITY
P185/70R14	Steel-belted radial all-season touring tread design black sidewall	Standard Acclaim
P195/70R14	Steel-belted radial all-season touring tread design black sidewall	Standard Acclaim LE; required with 3.0L V6 engine and cast aluminum wheels on Acclaim
P195/70R14	Steel-belted radial all-season touring tread design white sidewall	Optional on Acclaim and Acclaim LE with V6; not available with cast aluminum wheels
P205/60R15	Steel-belted radial all-season touring tread design black sidewall	Standard Acclaim LX
T125/70D14	Compact-type spare (one)	Standard
P185/70R14 P195/70R14	Matching-type; conventional-type spare (one)	Optional Acclaim and Acclaim LE; not available Acclaim LX

MILEAGE*

24 EPA est. city mpg, 34 EPA est. hwy. mpg

*Mileage figures are for 1991 base Acclaim with standard engine and 5-speed manual overdrive transaxle.

FUNCTIONAL

	ACCLAIM	ACCLAIM LE	ACCLAIM LX
Alternator—90-ampere	S	S	S
Battery—500-ampere, maintenance-free; with test indicator	S	S	S
Brake—Parking: foot-pedal-operated	S	S	S
Brakes—Dual diagonal, vented disc front, self-adjusting drum rear; power-assisted	S	S	S
Brakes—Four-wheel power-assisted disc with antilock feature (ABS)	O	O	O
Coolant Overflow Reservoir	S	S	S
Electronic Ignition, Voltage Regulator, and Fuel Injection	S	S	S
Emissions Controls and Testing—Required at extra cost on all vehicles registered in California; not available otherwise	O	O	O
Engines and Systems—(See Power Train Chart)	—	—	—
Front-Wheel Drive	S	S	S
Fuel Tank—16-gallon; with curbside fuel filler door	S	S	S
Steering—Rack-and-pinion, fast-ratio (16:1), precision-feel; power-assisted	S	S	S
Suspension—Front gas-charged position-sensitive struts and solid antisway bar; rear beam axle with trailing arms, tubular antisway bar, and gas-charged shock absorbers	S	S	S
Tire—Spare: compact, limited service, T125/70D14	S	S	S
Tire—Spare: conventional, P185/70R14 or P195/70R14	O	O	NA
Tires—P185/70R14 steel-belted radial all-season touring tread design black sidewall (set of four)	S	NA	NA
Tires—P195/70R14 steel-belted radial all-season touring tread design black sidewall (set of four)	O ¹	S	NA
Tires—P195/70R14 steel-belted radial all-season touring tread design white sidewall (set of four). Not available with aluminum wheels.	O	O	NA
Tires—P205/60R15 steel-belted radial all-season touring tread design sidewall (set of four)	NA	NA	S
Wheel Covers—Deluxe: 14-inch (set of four)	S	NA	NA
Wheel Covers—Premium: 14-inch (set of four)	NA	S	NA
Wheels—Road: cast aluminum 14-inch (set of four)	O ²	O ²	NA
Wheels—Road: cast aluminum lace 15-inch (set of four)	NA	NA	S

EXTERIOR

Bumpers, Double-Protection—Five-mph energy-absorbing; color-keyed, with protective rub strips	S	S	S
Corrosion Protection—Extensive use of galvanized steel	S	S	S
Fog Lights—Integral in front fascia	NA	NA	S
Fuel Filler Cap Tether	S	S	S
Halogen Headlights—Aerostyle	S	S	S
Hood—Counterbalanced	S	S	S
Mirrors—Dual remote control: black	S	S	S
Moldings—Door center pillars (black); upper door frame and belt (bright/black); windshield and rear window (black)	S	S	S
Moldings—Bodyside bumper protective rub strip extensions, grooved with bright edge	S	S	NA
Moldings—Lower bodyside cladding (bright upper/grooved, Quartz color lower; narrow bodyside (body color) sill (black); wheel lip, full (bright)	NA	S	S
Moldings—Narrow bodyside, body color with bright edge	S	NA	NA
Stripes—Bodyside: paint, two-color	S	NA	NA
Stripes—Bodyside and deck lid: paint, two-color	NA	S	S
Urethane Protective Coating—Lower body	S	S	S

INTERIOR

	ACCLAIM	ACCLAIM LE	ACCLAIM LX
Acoustical Package—Insulation: body sound	S	S	S
Acoustical Package—Premium: body sound	P	S	S
Air Conditioning—Manual temperature control: with bi-level ventilation ³	P	O	O
Armrest—Center console-mounted: storage bin and dual cup holder for rear passengers included	O ⁴	S	S
Armrests—Door-mounted: two front, two rear	S	S	S
Ash Receivers—One front, two rear	S	S	S
Carpeting—Passenger compartment: color-keyed	S	S	S
Carpeting—Trunk floor and sidewall	S	S	S
Cellular Phone—Visorphone, dealer installed	O	O	O
Cellular Phone—Portable, dealer item	O	O	O
Chimes—Warning: fasten seat belt, headlights on, key in ignition	S	S	S
Cigar Lighter	S	S	S
Clock—Electronic digital (integral with radio)	S	S	S
Coat Hooks—Two rear	S	S	S
Console—Full floor: with cassette storage and storage bin, front cup holder	S ⁵	NA	NA
Console—Full floor: with cassette storage and storage bin, front and rear cup holders	E	S	S
Cubby Bin—Instrument panel; open: flocked	S	NA	NA
Deck Lid Release—Cable-operated remote control; defeat mechanism located in trunk	S	S	S
Defroster—Rear window: electric (required on all passenger vehicles registered in New York state)	O	S	S
Demisters—Side window	S	S	S
Door Locks—Power	O	O	O
Door Release Handles—Interior: easy-open, with plunger type lock/unlock system	S	S	S
Floor Mats—Front and rear: carpeted	P	S	S
Glass—Tinted, all windows	P	S	S
Glove Box—Lockable: includes storage for cassette tapes	S	S	S
Head Restraints—Front: two-way adjustable	S	S	S
Heater and Defroster—With bi-level ventilation and side window demisters	S	S	S
Hood Release—Inside	S	S	S
Horns—Dual	S	S	S
Instrument Cluster—Electromechanical analog speedometer with secondary metric scale; odometer, trip odometer; gauges for electrical system voltage, engine coolant temperature, and fuel level; warning lights for brake system failure or parking brake on, check engine, check gauges, fasten seat belts, low fuel, low oil pressure, air bag, and ABS warning (if equipped)	S	S	S
Keys—Reversible: double-bitted, with valet feature	S	S	S
Lights—Ash receiver, dome, front and rear door switches for dome light, glove box, trunk	S	S	S
Lights—Cigar lighter, ignition switch with time delay (standard on base), map light, underhood	P	S	S
Locks—Interior rear doors: child protection	S	S	S
Message Center—Graphic: includes warning lights for door ajar, headlight out, low windshield washer fluid, stoplight out, taillight out, deck lid ajar	P	S	S
Mini Travel Trip Computer—Includes average and instant miles per gallon, distance to empty, trip odometer, elapsed time: U.S. and metric readout	NA	NA	S

INTERIOR (cont.)

	ACCLAIM	ACCLAIM LE	ACCLAIM LX
Mirror—Rearview day/night	S	S	S
Mirrors—Dual visor vanity	S	S	S
Multifunction Control Lever—Mounted on steering column: includes controls for turn signals with lane change feature, headlight dimmer, and day/night flash/pass feature; windshield wiper/washer	S	S	S
Radio—AM/FM stereo: electronically tuned; Dynamic Noise Reduction ⁶ ; four speakers on Acclaim LE, two front speakers on Acclaim; integral digital clock	S	S	NA
Radio—AM/FM stereo: electronically tuned; Dynamic Noise Reduction ⁶ ; cassette tape player with automatic reverse; four speakers; integral digital clock	O	O	S
Radio—Chrysler Infinity I Sound System AM stereo/FM stereo: electronically tuned; memory scan, up-and-down seek-and-scan, Dynamic Noise Reduction ⁶ ; electronic cassette tape player with automatic reverse, true fast forward and rewind, automatic metal tape sensor, tape program music search, Dolby B ⁸ Noise Reduction, joystick balance/fader speaker control; Chrysler Infinity vehicle equalized eight speakers in four locations; integral digital clock	O ⁹	O	O
Radio—Chrysler Infinity II Sound System AM stereo/FM stereo: electronically tuned; with memory scan, up-and-down seek-and-scan, Dynamic Noise Reduction ⁶ ; electronic cassette tape player with automatic reverse, true fast forward and rewind, automatic metal tape sensor, tape program music search, Dolby B ⁸ Noise Reduction, five-band electronic graphic equalizer, joystick balance/fader speaker control; Chrysler Infinity vehicle-equalized eight speakers in four locations; integral digital clock	NA	O	O
Seat Belts—Three-point Unibelt, with automatic retractor on front and rear outboard seats, lap belts at all other positions: color-keyed	S	S	S
Seats—Front: cloth with vinyl trim low-back bucket with reclining seatbacks and two-way adjustable head restraints	S	NA	NA
Seats—Front: premium cloth with vinyl trim low-back bucket with reclining seatbacks and two-way adjustable head restraints	NA	S	S
Seats—Front: cloth with vinyl trim 50/50 split bench with individual armrests ¹⁰	O	NA	NA
Seats—Front: premium cloth with vinyl trim 50/50 split bench with individual armrests ¹⁰	NA	O	O
Seats—Power, left side of 50/50 split bench or driver-side bucket	O	O	O
Seats—Rear: cloth with vinyl trim bench	S	NA	NA
Seats—Rear: cloth with vinyl trim folding seatback, split 55/45; lockable latches	P ⁹	S	S
Speed Control—Electronic	P	S	S
Steering Column—Tilt	P	S	S
Steering Wheel—Luxury with air bag	S	NA	NA
Steering Wheel—Luxury with air bag and speed control switches	P	S	NA
Steering Wheel—Luxury with air bag and speed control switches: leather-wrapped	NA	NA	S
Tachometer and Oil Pressure Gauge	E	S	S
Visors—Dual with vanity mirrors, includes sliding cover, driver's side	S	S	S
Visors—Dual with vanity mirrors: illuminated, flip-up covers	NA	P	P
Windshield Wipers—Deluxe; with variable intermittent wipe feature	S	S	S

S—Standard. O—Optionally available. P—Package only. NA—Not available. E—Extra cost.
¹Required with 3.0-liter V6 engine option and 14" cast aluminum wheels only.
²Must have P195/70R14 SBR BSW. Not available with WSW.
³There are special engine cooling requirements for field-installed air conditioning. Failure to follow these requirements may invalidate warranty. See your dealer for details.
⁴Available with automatic transaxle only.
⁵Console must be specified when ordering automatic transaxle or shift lever will be steering-column mounted.
⁶Dynamic Noise Reduction is a trademark of National Semiconductor Corporation.
⁷Some AM stereo broadcasting may not be compatible with this radio.
⁸Dolby B is a trademark of Dolby Laboratories.
⁹Requires Premium Equipment Package.
¹⁰Column-mounted shifter replaces console-mounted shifter and console. Includes instrument panel-mounted cup holders/ashtray.



Quality Worth Backing

All Chrysler Motors domestically built automobiles and light trucks now

benefit from the 7/70 Power Train Limited Warranty. Upon expiration of the basic 12-month or 12,000-mile Basic Limited Warranty, coverage is extended on power train components to seven years or 70,000 miles.* This represents one of the most comprehensive original limited warranties available on cars and trucks built and sold in the United States, and points out Chrysler Motors' pride in building and backing its products the right way.

In addition to the 7/70 Power Train Limited Warranty described above, all domestically built Chrysler Motors automobiles offer the 7/100 Anticorrosion Limited Warranty. Your dealer will repair or replace at no charge outer body sheet metal panels found to have developed perforation (rust-through) in normal use up to seven years or 100,000 miles. See your dealer for a copy of the limited warranties.

*A deductible applies

Optional Service Contract Coverage Chrysler Service Contracts provide you with additional peace-of-mind protection for your new vehicle. Chrysler Motors offers a variety of plans to meet your needs. Plan coverage begins after your vehicle's basic warranty expires. A deductible applies. Allowances for car rental and towing are also included. See your dealer for details.



MOPAR parts are engineered by Chrysler Motors for use in your new Plymouth Acclaim. When replacement is necessary, be sure to specify MOPAR parts.

Used by professional automotive technicians worldwide.

Chrysler Cellular Systems OKI* Telecom manufactures, services, and is the warrantor of the Visorphone, Mobile phone and Portable phone products that are available on selected Chrysler Motors vehicles. See your dealer for a copy of the limited warranties. Restrictions apply.

Consider Leasing More consumers are considering leasing as an alternative to buying. Leasing a new Plymouth Acclaim usually involves a small security deposit and a first month's lease payment. Monthly payments frequently are less than financing a new car purchase. Ask your dealer for details.

Chrysler Credit Making the best even more affordable. Chrysler Credit offers a variety of finance programs that will help make your new Plymouth Acclaim even more affordable. These special finance and leasing programs are designed to meet the needs of today's automotive buyer. They include Gold Key Lease, America's Choice Payment Plan, College Graduate Plans, Retail Financing, and more. Ask your salesperson for details.

Chrysler Purchase Assistance Program for the Physically Challenged Cash reimbursements of up to \$500 are available for qualified adaptive driving devices on 1991 Chrysler Motors cars and trucks. For further information, contact your dealer or the PHYSICALLY CHALLENGED RESOURCE CENTER AT 1-800-255-9877.

All product illustrations and specifications are based upon current information at the time of publication approval. Although descriptions are believed correct, complete accuracy cannot be guaranteed. Chrysler Motors reserves the right to make changes from time to time, without notice or obligation, in prices, specifications, colors and materials, and to change or discontinue models. See your dealer for the latest information.

Plymouth and MOPAR are registered trademarks, and Acclaim is a trademark of Chrysler Corporation.

Buckle up for safety.



I'm proud of the quality and honest value we build into our products. But a lot of Americans aren't aware of it and that's got to change. Our 1991 Plymouths have real advantages over their import and domestic competition. Take Plymouth Acclaim. For safety, you'll find a standard driver-side air bag and lap/shoulder belts for all outboard seats. Acclaim is roomy and comfortable, with optional six-passenger seating, available V6 power and four-wheel antilock brakes, plus more than 50 standard features. It's all backed by seven years or 70,000 miles of power train protection, and seven years or 100,000 miles against outer body rust-through—one of the best limited warranties of any vehicle made. All of these advantages add up to a vehicle that we believe no other car company in the world can beat. Take a good look at Plymouth Acclaim versus the competition. For style, value, standard features, and advanced engineering, the other guys simply don't measure up. Advantage: Plymouth. But best of all, Advantage: customer.

Lee A. Iacocca



VOYAGER • ACCLAIM • SUNDANCE • LASER • COLT • VISTA