

2007 SONATA



HOTEL



2007 SONATA | INTRODUCTION

WHEN STYLE MEETS  
SUBSTANCE, IT'S LOVE  
AT FIRST SIGHT.

If you've been searching for the ideal combination of looks and brains, look no further than the 2007 Hyundai Sonata. It's a vehicle that showcases sophisticated style, quality, performance and standard safety technologies that are unsurpassed by any other sedan in its class. So it's not surprising that MotorWeek exclaimed, "It simply outclasses the mighty Camry and Accord."\* Drive one, and see how quickly you fall in love.

\*2006 Hyundai Sonata road test



LIMITED IN BRIGHT SILVER

 **HYUNDAI**

2007 SONATA | PERFORMANCE

Of course, one can't get by on good looks alone. That's why the Sonata SE and Limited boast a 3.3-liter, 234-horsepower V6 engine that features Continuously Variable Valve Timing and a variable induction system. This perfect fusion of power and efficiency is matched with a 5-speed automatic transmission with SHIFTRONIC, which gives you the option of clutchless manual shifting. It's so exhilarating, you may never want to put it back into park.

- **3.3-LITER, 234-HP, ALL-ALUMINUM V6 ENGINE\* WITH CONTINUOUSLY VARIABLE VALVE TIMING**
- **5-SPEED AUTOMATIC TRANSMISSION WITH SHIFTRONIC®\***
- **DOUBLE-WISHBONE FRONT SUSPENSION**
- **MULTI-LINK REAR SUSPENSION**
- **17-INCH EUROFLANGE ALLOY WHEELS\***
- **AERODYNAMIC .32 COEFFICIENT OF DRAG**

\*On SE and Limited



LIMITED IN EBONY BLACK







LIMITED BEIGE INTERIOR



LIMITED IN BEIGE LEATHER

## 2007 SONATA | INTERIOR

Classified by the U.S. EPA as a "Large Car"—a full class above Toyota Camry and Honda Accord—the Sonata features a well-appointed cabin that gives you and your passengers plenty of room to stretch out and get comfortable. Yet with all this space, you'll find Sonata's ergonomic design and intelligently positioned driver controls put everything within easy reach—making each ride all the more enjoyable.

- LEATHER-TRIMMED INTERIOR\*
- AIR CONDITIONING WITH CABIN AIR FILTER
- AUTOMATIC TEMPERATURE CONTROL WITH OUTSIDE TEMPERATURE DISPLAY\*
- LEATHER-WRAPPED TILT STEERING WHEEL
- TRIPLE-SEALED DOORS
- HEATED FRONT SEATS\*

\*On Limited

## 2007 SONATA | SAFETY

As much as we like to talk about how the Sonata looks and drives, we never lose sight of the fact that safety comes first. At Hyundai, we're committed to the well-being and peace of mind of everyone who steps into one of our vehicles. The 2007 Sonata comes equipped with standard safety technologies that are unsurpassed in its class and a reinforced body structure that will help protect you and your loved ones for years to come.



LIMITED IN STEEL GRAY

### Child-seat Anchors

In the Sonata, even the smallest passengers receive uncompromising protection. Installing child seats securely is easy and fast, thanks to standard LATCH anchors<sup>1</sup> on both rear outboard seats.



### Electronic Stability Control

ESC<sup>2</sup> with Traction Control is a standard active safety system that helps keep every Sonata on its intended path by automatically applying the brakes to individual wheels and adjusting throttle input as required.



### Structural Integrity

The Sonata's reinforced unibody construction is intelligently engineered to absorb collision energy. High-tensile steel provides solid structural integrity, while front and rear crumple zones, bodyside reinforcements, hood-buckling creases and an energy-absorbing steering column help protect you in an impact from any direction.

<sup>1</sup> Child restraint system designs vary. Always consult instructions provided by manufacturer before installing.

<sup>2</sup> Electronic Stability Control (ESC) with Traction Control System (TCS) cannot control your vehicle's stability under all driving situations. ESC with TCS is not a substitute for safe driving practices. No system, no matter how advanced, can overcome physics or correct poor driving. The driver is always responsible for controlling the vehicle and must use caution to avoid loss of control in all driving conditions. Speed, road conditions and driver steering input will affect whether ESC with TCS can help prevent loss of control. See Owner's Manual for details.





**Six Airbags**

There is certainly safety in this number. The Sonata's comprehensive airbag system<sup>1</sup> features advanced dual front airbags, front-seat-mounted side-impact airbags and roof-mounted side-curtain airbags.

<sup>1</sup>The Supplemental Restraint System (SRS) is designed to work with the 3-point seatbelt system. The SRS deploys in certain frontal and/or side-impact conditions where significant injury is likely. The SRS is not a substitute for seatbelts, which should be worn at all times. Children under the age of 13 should be restrained securely in the rear seat. NEVER place a rear-facing child seat in the front seat of a vehicle that has a passenger-side airbag.



**Active Head Restraints**

Designed to further protect the front occupants in a rear collision, this standard safety feature helps prevent whiplash by moving forward to reduce the space between the occupant's head and the head restraint



**Energy-absorbing Steering Column**

An NHTSA report\* reveals that the energy-absorbing steering column is second only to the seatbelt system as an effective safety device when it comes to protecting the driver in a frontal collision.

\*From NHTSA's report, "Lives Saved by Federal Motor Vehicle Safety Standards and Other Vehicle Safety Technologies 1960-2002," October 2004

**Anti-lock Braking System**

The 4-wheel disc brakes with ABS and Electronic Brake-force Distribution (EBD) and Panic Brake Assist are standard on every Sonata for more precise vehicle control in emergency-braking situations.



**Perfect NHTSA Crash Safety Rating**



Demonstrating our commitment to your safety, the Hyundai Sonata has received the U.S. government's highest crash safety rating of 5 stars for both front and side-impact collisions.\*

\*Government star ratings are part of the National Highway Traffic Safety Administration's (NHTSA's) New Car Assessment Program ([www.safercar.gov](http://www.safercar.gov)). 2006 model tested.

## 2007 SONATA | STYLING

Beauty is in the eye of the driver. And all it takes is one glance at the Sonata's sleek, refined body. Its sculpted roof and hood lines invite you to take a closer look. Its gorgeous finish gleams from a unique, 18-pass, rotary-dip primer process that ensures superior corrosion protection and the feeling that the Sonata's true beauty will never fade. The end result is pure style, no matter what your point of view.

- CONTEMPORARY BODY DESIGN WITH GRACEFUL ROOF AND HOOD LINES
- INTEGRATED BUMPER DESIGN
- IN-GLASS ANTENNA
- JEWELLED PROJECTOR HEADLIGHTS
- FRONT FOG LIGHTS ON SE AND LIMITED
- CHROME-TIPPED DUAL EXHAUST ON V6
- BODYCOLOR BUMPERS AND BODYSIDE MOLDINGS

GLS IN DARK CHERRY RED

 **HYUNDAI**





LIMITED IN DEEPWATER BLUE

## 2007 SONATA | FEATURES

- POWER WINDOWS AND DOOR LOCKS
- DRIVER'S WINDOW AUTO-DOWN/UP WITH PINCH PROTECTION
- HEATED POWER SIDE MIRRORS
- REMOTE KEYLESS ENTRY SYSTEM
- AUTOMATIC HEADLIGHTS ON SE AND LIMITED
- REAR CENTER ARMREST WITH CUPHOLDERS
- AVAILABLE POWER SUNROOF



### Audio Systems

Pick your favorite driving music. All Sonatas come with an AM/FM/CD/MP3 audio system with six speakers. The Limited offers an optional Infinity® system with in-dash 6-disc CD changer, subwoofer and external amplifier.



### Large Storage Possibilities

Sonata's multi-link-hinged rear decklid hides a huge trunk, made even more spacious by the 60/40 split fold-down rear seats that can accommodate larger items. As if you needed another excuse to go golfing.

### Comfort

An 8-way power driver seat with adjustable lumbar support is standard on Limited and available on other Sonata models, allowing you to customize your seat position with ease for maximum comfort.



Your comfort zone has just made itself more comfortable. But that's to be expected, given all the convenient features the Sonata has to offer. The spacious cabin doesn't just invite you in with all its amenities. It invites you to stay. And once inside, you'll find more than enough power at your beck and call. But not to worry—you'll soon get comfortable with that as well.



# AMERICA'S BEST WARRANTY™

The best. We can say it because it's true. Hyundai is leading the way with important standard safety technologies, while continuing to raise the bar for comfort and refinement. And the quality of every vehicle is backed by America's Best Warranty\*—evidence of our steadfast commitment to building only the highest-quality automobiles. So no matter which Hyundai you choose, you can get out there and drive your way.



2007 SONATA | WARRANTY

**10-YEAR/100,000-MILE  
POWERTRAIN PROTECTION**

**5-YEAR/60,000-MILE  
BUMPER-TO-BUMPER  
COVERAGE**

**7-YEAR/UNLIMITED MILES  
ANTI-PERFORATION  
WARRANTY**

**5-YEAR/UNLIMITED MILES  
24-HOUR ROADSIDE  
ASSISTANCE**

\*See dealer for LIMITED WARRANTY details.





### 2007 SONATA GLS

#### STANDARD FEATURES INCLUDE:

- 2.4-LITER, DOHC INLINE 4-CYLINDER ENGINE WITH CONTINUOUSLY VARIABLE VALVE TIMING
- 5-SPEED MANUAL TRANSMISSION
- ELECTRONIC STABILITY CONTROL (ESC) WITH TRACTION CONTROL SYSTEM (TCS)
- 4-WHEEL DISC BRAKES
- 4-WHEEL ANTI-LOCK BRAKING SYSTEM (ABS) WITH ELECTRONIC BRAKE-FORCE DISTRIBUTION (EBD) AND PANIC BRAKE ASSIST
- 16-INCH STEEL WHEELS WITH FULL COVERS
- ADVANCED DUAL FRONT AIRBAGS WITH OCCUPANT CLASSIFICATION SYSTEM (OCS)
- FRONT SIDE-IMPACT AIRBAGS
- FRONT AND REAR SIDE-CURTAIN AIRBAGS
- ACTIVE FRONT HEAD RESTRAINTS
- AIR CONDITIONING WITH CABIN AIR FILTER
- CENTER CONSOLE WITH ARMREST AND TWO-TIER STORAGE
- REAR CENTER ARMREST WITH DUAL CUPHOLDERS
- LEATHER-WRAPPED TILT STEERING WHEEL
- POWER WINDOWS, DOOR LOCKS AND HEATED SIDE MIRRORS
- DRIVER'S WINDOW AUTO-DOWN/UP WITH PINCH PROTECTION
- AM/FM/CD/MP3 AUDIO SYSTEM WITH SIX SPEAKERS
- REMOTE KEYLESS ENTRY SYSTEM
- CRUISE CONTROL
- 60/40 SPLIT FOLD-DOWN REAR SEATBACK



### 2007 SONATA SE

#### INCLUDES ALL STANDARD GLS FEATURES PLUS:

- 3.3-LITER, 24-VALVE, DOHC V6 ENGINE WITH CONTINUOUSLY VARIABLE VALVE TIMING
- CHROME-TIPPED DUAL EXHAUST
- 5-SPEED AUTOMATIC TRANSMISSION WITH SHIFTRONIC®
- 17-INCH, 5-SPOKE EUROFLANGE ALLOY WHEELS
- AUTOMATIC HEADLIGHTS
- FRONT FOG LIGHTS
- STEERING-WHEEL-MOUNTED AUDIO CONTROLS
- DRIVER SEAT ADJUSTABLE LUMBAR SUPPORT
- SOLAR CONTROL GLASS
- MULTI-FUNCTION TRIP COMPUTER
- INTERIOR WOODGRAIN OR METALGRAIN ACCENTS
- CHROME WINDOW-BELT MOLDINGS
- PREMIUM CLOTH SEATING SURFACES



### 2007 SONATA LIMITED

#### INCLUDES ALL STANDARD SE FEATURES PLUS:

- LEATHER-TRIMMED INTERIOR
- HEATED FRONT SEATS
- 8-WAY POWER DRIVER SEAT
- AUTOMATIC TEMPERATURE CONTROL WITH OUTSIDE TEMPERATURE DISPLAY
- AIR QUALITY SYSTEM (AQS)
- ELECTROCHROMIC AUTO-DIMMING REARVIEW MIRROR WITH COMPASS
- HOMELINK® INTEGRATED TRANSCEIVER
- SLIDING CENTER ARMREST
- TILT-AND-TELESCOPIC STEERING WHEEL
- CHROME-ACCENTED FRONT GRILLE AND EXTERIOR DOOR HANDLES
- PREMIUM DOOR-SILL PLATES
- "LIMITED" BADGING



ARCTIC WHITE  
BEIGE, GRAY OR  
BLACK INTERIOR



POWDER WHITE  
PEARL BEIGE,  
GRAY OR  
BLACK INTERIOR



DARK CHERRY RED  
BEIGE OR BLACK  
INTERIOR



AQUA BLUE  
BEIGE, GRAY OR  
BLACK INTERIOR



DEEPWATER BLUE  
BEIGE, GRAY OR  
BLACK INTERIOR



EBONY BLACK  
BEIGE, GRAY OR  
BLACK INTERIOR



NATURAL KHAKI  
BEIGE INTERIOR



GOLDEN BEIGE  
BEIGE INTERIOR



BRIGHT SILVER  
GRAY OR BLACK  
INTERIOR



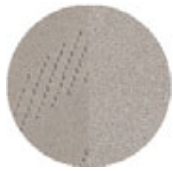
SILVER BLUE  
GRAY OR BLACK  
INTERIOR



STEEL GRAY  
GRAY OR BLACK  
INTERIOR

#### EXTERIOR COLORS

#### INTERIOR COLORS



GLS BEIGE CLOTH



GLS GRAY CLOTH



PREMIUM BEIGE CLOTH



PREMIUM GRAY CLOTH



LIMITED BEIGE LEATHER



LIMITED GRAY LEATHER



LIMITED BLACK LEATHER\*



2007 SONATA | SPECIFICATIONS

**GLS PACKAGES**

(P) Premium Package:

- Power Driver Seat
- Steering-wheel-mounted Audio Controls
- Driver Seat Lumbar Support
- Automatic Headlights
- Multi-function Trip Computer
- Metalgrain or Woodgrain Interior Accents
- Chrome Window Belt Moldings
- Premium Cloth Seating Surfaces

(PS) Premium-Sport Package:

- Includes Premium Package
- Power Tilt-and-slide Sunroof
- 17-inch Alloy Wheels
- Front Fog Lights

**SE PACKAGES**

(PR) Preferred Package:

- Power Driver Seat
- Electrochromic Auto-dimming Rearview Mirror and Compass
- HomeLink

(P) Premium Package:

- Includes Preferred Package
- Power Tilt-and-slide Sunroof
- In-dash 6-disc CD Changer, Subwoofer, External Amplifier

**LIMITED PACKAGES**

(U) Ultimate Package:

- Power Tilt-and-slide Sunroof
- Infinity® AM/FM/MP3/In-dash 6-disc CD Changer, External Amplifier, Subwoofer, 6 Speakers

**SAFETY FEATURES**

	GLS	SE	LIMITED
Electronic Stability Control (ESC) with Traction Control System (TCS)	S	S	S
4-wheel Anti-lock Braking System (ABS) with Electronic Brake-force Distribution (EBD) and Panic Brake Assist	S	S	S
Advanced Driver and Front Passenger Airbags (SRS) with Occupant Classification System (OCS)	S	S	S
Driver and Front Passenger Side-impact Airbags (SRS), seat-mounted	S	S	S
Front and Rear Side-curtain Airbags (SRS), roof-mounted	S	S	S
Active Front Head Restraints	S	S	S
3-point Seatbelts, all seating positions	S	S	S
Front Seatbelt Pretensioners with Force Limiters	S	S	S
Adjustable Front Seat Shoulder Belt Anchors	S	S	S
Energy-absorbing Steering Column	S	S	S
Front and Rear Crumple Zones	S	S	S
Rear LATCH Child-seat-attachment System	S	S	S
Childproof Rear Door Locks	S	S	S

**EXTERIOR FEATURES**

	GLS	SE	LIMITED
Power Tilt-and-slide Sunroof with One-touch Open/Close and Sliding Sunshade	O/P/S	O/P	U
Automatic Headlights	P/P/S	S	S
Front Fog Lights	PS	S	S
Tinted Glass	S	Solar Control	Solar Control
Dual Heated Power Side Mirrors	S	S	S
Remote Keyless Entry with Trunk Release, Alarm and Panic Alert	S	S	S
Variable Intermittent Windshield Wipers	S	S	S
Rear-window Defroster with Timer	S	S	S
Bodycolor Door Handles, Mirrors, Bumpers and Bodyside Moldings	S	S	S
Chrome-accented Front Grille and Door Handles	-	-	S
Chrome Window Belt Moldings	P/P/S	S	S

**INTERIOR FEATURES**

	GLS	SE	LIMITED
Air Conditioning with Cabin Air Filter	S	S	S
Automatic Temperature Control with Outside Temperature Display and Air Quality System (AQS)	-	-	S
Power Windows, Driver's Auto-Down/up with Pinch Protection, Illuminated Window Switches	S	S	S
Electrochromic Auto-dimming Rearview Mirror with HomeLink® and Compass	-	PR/P	S
Cruise Control, steering-wheel-mounted	S	S	S
Multi-function Trip Computer (distance to empty, fuel economy, average speed, trip timer/distance)	P/P/S	S	S
AM/FM/CD/MP3 Audio System with 6 Speakers and In-glass Antenna	S	S	S
AM/FM/MP3/In-dash 6-disc CD Changer, External Amplifier, Subwoofer, 6 Speakers	-	P	-
Infinity® AM/FM/MP3/In-dash 6-disc CD Changer, External Amplifier, Subwoofer, 6 Speakers	-	-	U
Steering-wheel-mounted Audio Controls	P/P/S	S	S
Seating Surfaces	Cloth	Premium Cloth	Leather
Multi-adjustable Driver Seat	S	S	S
8-way Power Driver Seat	P/P/S	PR/P	S
Driver Seat Lumbar Support	P/P/S	S	S
Heated Front Seats	-	-	S
Leather-wrapped Steering Wheel and Shift Knob	Steering Wheel Only**	S	S
Tilt Steering Wheel	S	S	-and-telescopic
Front Maplights/Cargo Area Light	S	S	S
Center Console with Armrest, Cupholders and Two-tier Storage	S	S	with Sliding Armrest
Rear Center Armrest with Dual Cupholders	S	S	S
60/40 Split Fold-down Rear Seatback	S	S	S
Carpeted Floor Mats	O	O	O
Metalgrain Interior Accents (with gray interior) or Woodgrain (with beige interior)	P/P/S	S	S

<sup>†</sup>Requires Premium Package

<sup>\*\*</sup>Leather-wrapped shift knob with optional AT only

**S = Standard O = Optional Feature - = Not Available**

\*Availability not final at time of printing. \*\*EPA estimates for comparison. Your actual mileage will vary with options, driving conditions, driving habits and vehicle's condition. While the information contained in this brochure was correct at time of printing, specifications and equipment can change. No warranty or guarantee is being extended in this brochure, and Hyundai reserves the right to change product specifications and equipment at any time without incurring obligations. Some vehicles are shown with optional equipment. Specifications apply to U.S. vehicles only. Please contact your Hyundai dealer for current vehicle specifications.



16-INCH WHEEL COVER



16-INCH ALLOY WHEEL



17-INCH ALLOY WHEEL

	GLS	SE	LIMITED
<b>ENGINE</b>			
2.4-liter, All-aluminum, 16-valve, DOHC In-line 4-cylinder with Continuously Variable Valve Timing	S	–	–
3.3-liter, All-aluminum, 24-valve, DOHC V6 with Continuously Variable Valve Timing	–	S	S
Horsepower @ rpm (SAE net)	162 @ 5800	234 @ 6000	234 @ 6000
Torque (lb.-ft. @ rpm)	164 @ 4250	226 @ 3500	226 @ 3500
Compression Ratio	10.5:1	10.4:1	10.4:1
Multi-port Programmed Fuel Injection	S	S	S
Electronic Ignition System	S	S	S
Chrome-tipped Dual Exhaust	–	S	S
<b>DRIVETRAIN/TRANSMISSION</b>			
Drive Configuration: Front-wheel Drive	S	S	S
5-speed Manual Transmission	S	–	–
4-speed Automatic Transmission with SHIFTRONIC®	O	–	–
5-speed Automatic Transmission with SHIFTRONIC	–	S	S
Final Drive Ratio (MT/AT)	3.44/3.77	–/3.33	–/3.33
<b>BODY/SUSPENSION/CHASSIS</b>			
Body Type: Five-passenger Sedan	S	S	S
4-wheel Independent Suspension, front double wishbone, rear multi-link	S	S	S
Stabilizer Bars (mm.), front/rear	25.0/15.0	26.0/15.0	26.0/15.0
Power Rack-and-pinion Steering, engine-speed-sensing	S	S	S
Twin-tube Gas Shock Absorbers, front and rear	S	S	S
Electronic Stability Control (ESC) with Traction Control System (TCS)	S	S	S
4-wheel Disc Brakes	S	S	S
4-wheel Anti-lock Braking System (ABS) with Electronic Brake-force Distribution (EBD) and Panic Brake Assist	S	S	S
16-inch Steel Wheels with Full Covers and P215/60R Tires	S	–	–
16-inch, 6-spoke Alloy Wheels with P215/60R Tires	TBD*	TBD*	–
17-inch, 5-spoke Euroflange Alloy Wheels with P225/50R Tires; (P215/55R tires later availability)	PS	S	S
Turning Diameter, curb-to-curb (ft.)	35.8	35.8	35.8
<b>EXTERIOR DIMENSIONS</b>			
Wheelbase (in.)	107.4	107.4	107.4
Length (in.)	188.9	188.9	188.9
Width (in.)	72.1	72.1	72.1
Height (in.)	58.0	58.0	58.0
Track (in.), front/rear	62.0/61.4	62.0/61.4	62.0/61.4
Curb Weight (lbs.) 2.4L (MT/AT)	3253/3266	–	–
Curb Weight (lbs.) 3.3L	–	3458	3458
<b>INTERIOR DIMENSIONS</b>			
Head Room (in.), front/rear	40.1/38.2	40.1/38.2	40.1/38.2
Leg Room (in.), front/rear	43.7/37.4	43.7/37.4	43.7/37.4
Shoulder Room (in.), front/rear	57.4/56.9	57.4/56.9	57.4/56.9
Hip Room (in.), front/rear	55.5/55.3	55.5/55.3	55.5/55.3
Cargo Volume (cu. ft.)	16.3	16.3	16.3
Passenger Volume (cu. ft.)	105.4	105.4	105.4
EPA Size Classification	Large Car	Large Car	Large Car
<b>EPA MILEAGE ESTIMATES**/FUEL CAPACITY</b>			
2.4L (city/highway) MT(AT)	24/34 (24/33)	–	–
3.3L (city/highway)	–	20/30	20/30
Fuel-tank Capacity (gal.)	17.7	17.7	17.7

**S = Standard O = Optional Feature – = Not Available**

\*Availability not final at time of printing. \*\*EPA estimates for comparison. Your actual mileage will vary with options, driving conditions, driving habits and vehicle's condition.

While the information contained in this brochure was correct at time of printing, specifications and equipment can change. No warranty or guarantee is being extended in this brochure, and Hyundai reserves the right to change product specifications and equipment at any time without incurring obligations. Some vehicles are shown with optional equipment. Specifications apply to U.S. vehicles only. Please contact your Hyundai dealer for current vehicle specifications.