

05 G6

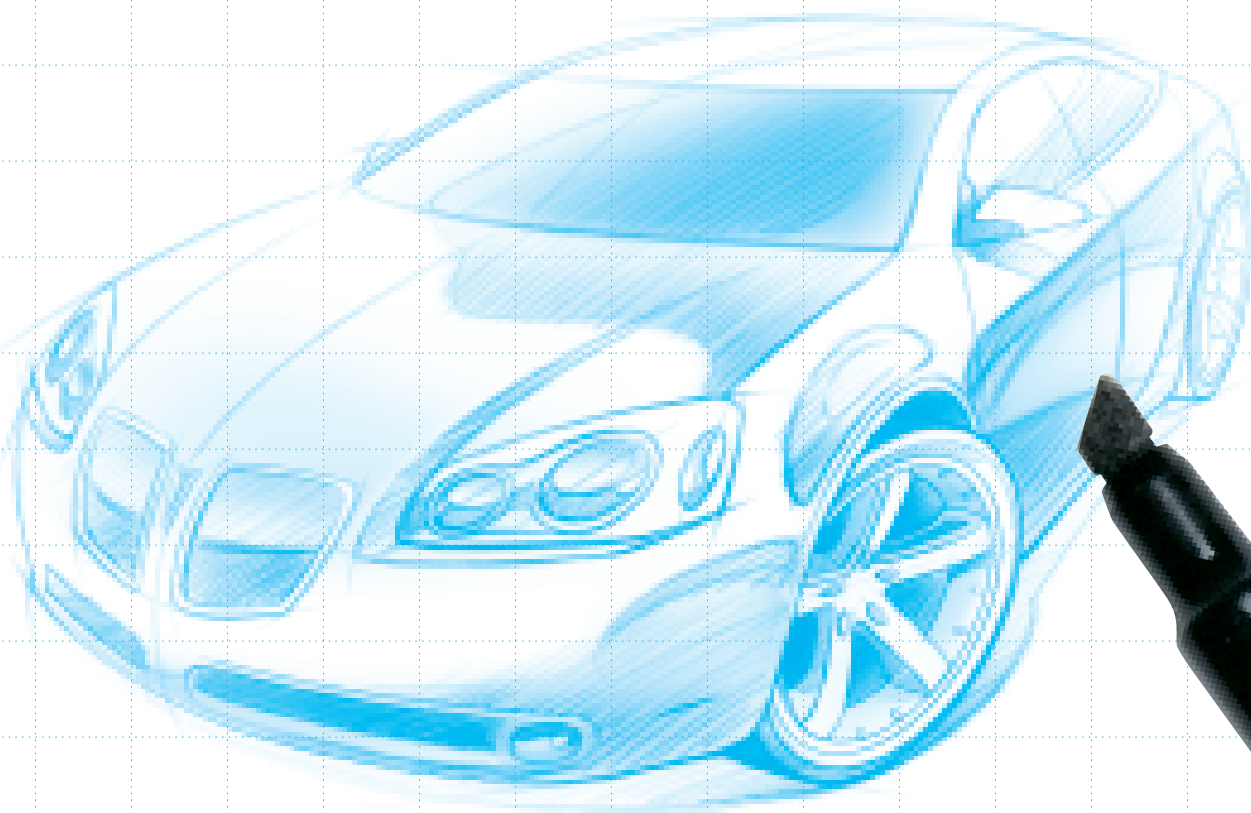
05 G6



PONTIAC  BUILT FOR DRIVERS



NO PRECONCEPTIONS



BUILDING ON AN IDEA. The starting point for the new 2005 Pontiac G6 wasn't a chassis, or an engine, or a panel of sheet metal. It was an idea – unencumbered by assumptions or preconceptions. The goal was deceptively simple: create a signature driving experience so responsive it would enable drivers to heighten their own level of performance. So what does it take to transform an abstract concept into full-blown reality? You're about to find out for yourself. What you'll discover is how creative design and advanced technology have been fused together with a single sense of purpose. All focused around the driver. In a race-bred cockpit where performance is judged by the feeling of extraordinary connection with the car and the road. The new 2005 Pontiac G6. Built for Drivers. Find more information about Pontiac G6 at gmcanada.com

PONTIAC  BUILT FOR DRIVERS



**G6's MOST IMPORTANT
COMPONENT: CREATIVITY.**





THE WAY THE CONTOURS ARE BOLDLY SCULPTED. The way the aggressive stance produces road manners that are as poised and assured as the styling.

It appeared daring on the drawing board. It became audacious – almost provocative – in the modelling stage. The abbreviated overhangs give it a sleek, yet muscular look. The result is pure to the idea, with nothing lost in translation. A fresh expression of Pontiac style. G6.



Call it cohesion – an integrated design, where form and function work together harmoniously, without even the hint of compromise. The very latest thinking from Pontiac – G6.

THE NEW 2005 G6

G6 GT, shown in Granite Metallic.



REMINDE YOU OF ANYTHING? This isn't one of those cases where the creative design of a concept vehicle is undermined by the production process. Phrases like "it can't be done" were not tolerated during G6's development. Instead, every bold stroke of the designer's pen was preserved in the G6 production vehicle.

ADRENALINE.



G6 GT, shown in Stealth Gray Metallic.

YOUR OWN PERSONAL TESTING GROUND.

WE'VE HAD OUR TIME IN THE WIND TUNNEL and at the test track. The result is an extended wheelbase architecture that defines both G6's form and its sure-footed handling. Notice not just the size of the GT's 17-in. wheels and V-rated tires, but also the width of the track between the wheels. All these elements contribute to G6's tremendous stability and responsiveness. Ready to fire up the standard 200 hp V6 engine? Simply activate the available factory-installed remote vehicle starter. Now it's your turn to put G6's performance to the test.

EXTERIOR



The image shows the interior of a car, focusing on the front and rear seats. The seats are upholstered in a dark, possibly black, leather with visible stitching. The car's interior is dimly lit, with a blueish tint. A prominent red vertical bar is on the left side of the image. The text 'INTERIOR' is written vertically in white on this bar. At the bottom, the slogan 'IN THE RIGHT PLACE AT THE RIGHT TIME.' is displayed in large, bold, white capital letters. At the very bottom left, there is a small line of text: 'G6 GT interior, shown with available Nuance leather-appointed seating in Ebony.'

INTERIOR

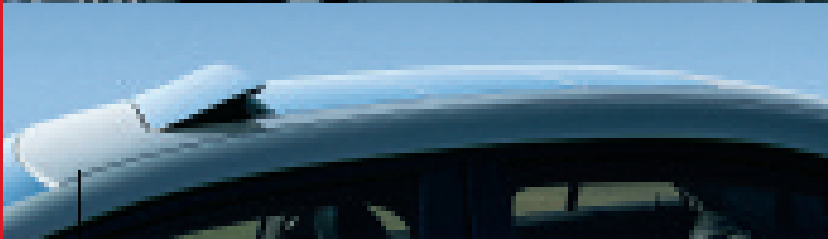
IN THE RIGHT PLACE AT THE RIGHT TIME.

G6 GT interior, shown with available Nuance leather-appointed seating in Ebony.

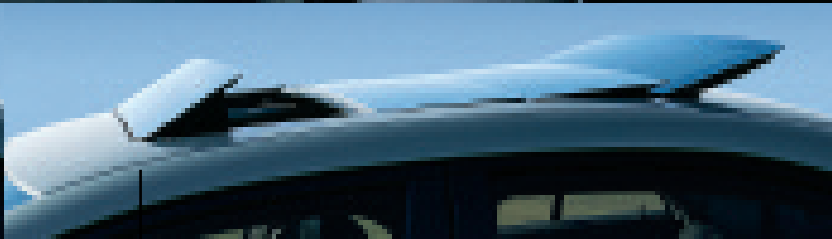


IF YOU VIEW EVERY TURN BEHIND THE WHEEL as something of a personal challenge, you'll find that the driver's seat of the G6 provides an almost unfair competitive advantage. The cockpit combines a race-inspired look with a race-inspired feel. The driver-oriented design is defined by the highly bolstered sport seating and the wraparound contours of the instrument panel. In addition, the controls and switches are tuned to provide positive tactile feedback. Even more importantly, the steering, brakes and accelerator have been meticulously balanced and evenly weighted, contributing to precise driver control. Let the performance begin.

INTERIOR



Open one panel and the roof functions like an air vent.



You can retract one, two or three roof panels to control the amount of sunlight and airflow you allow into the cockpit.

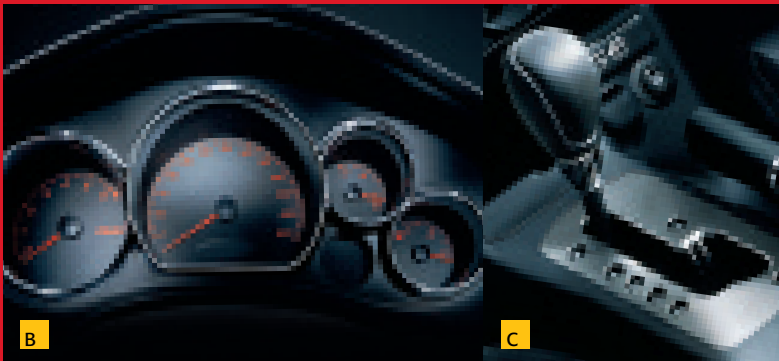
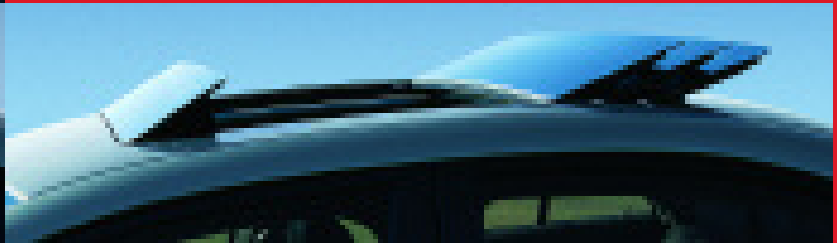
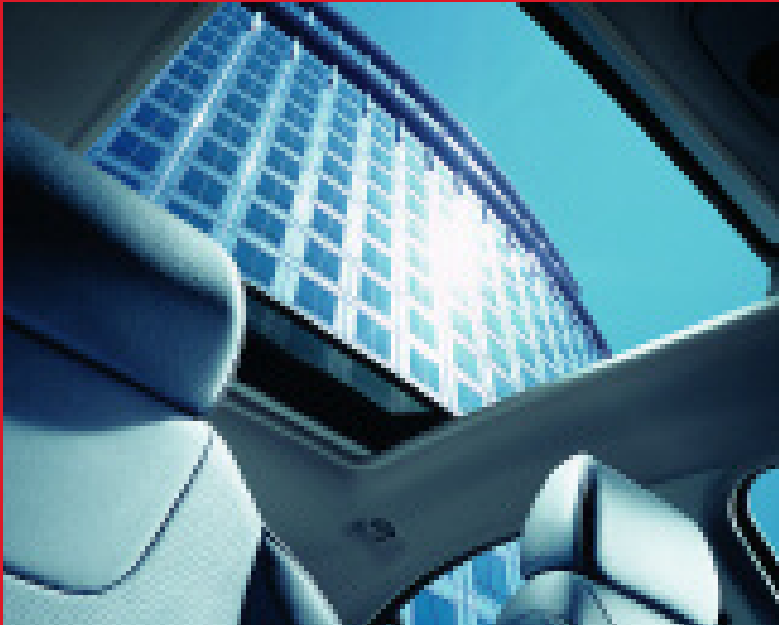


POSITIVELY VISIONARY.

WHEN YOU START WITH A BLANK SLATE, you get to think big.

G6's available Panoramic sunroof is an excellent example. Measuring twice the area of your old-school sunroof, this new feature is a one-of-a-kind in its class.* It's not only the size that distinguishes this sunroof from all others – it's also the manner in which it operates. Four separate panels retract progressively, allowing you to choose your preferred size of opening. When the roof is open, the panels are stored externally, preserving interior headroom. Widen your vision of performance driving. With G6 and its available Panoramic sunroof.

*Based on competitive 2004 Model Year data and latest competitive information at time of printing.



B

C

A. POWER ADJUSTABLE PEDALS

It's not only the GT's power adjustable pedals that enable you to define your ultimate driving position. Also included are a telescoping and tilt adjustable steering column, as well as the height-adjustable driver's seat.

B. GAUGE CLUSTER

G6's gauges are easy on the eyes in more ways than one: the chrome trim provides a distinctive styling accent, while the warm red backlit faces help reduce eye strain at night.

C. SHIFTER

The GT's four-speed automatic transmission includes a shift control feature that allows you to manually shift up or down merely by flicking the shifter. Another race-inspired detail.

3.5L V6

200 HP

G6 POWER



G6 GT, shown in Granite Metallic.

THIS ENGINE ANSWERS ONLY TO YOU.

THE REAL TEST OF AN ENGINE isn't revealed simply by its peak horsepower ratings. It's how the car actually responds when you press down the accelerator pedal. G6's response is hastened by the electronic throttle control that is tuned to maximize off-the-line acceleration. The result: a 0–60 mph (0–96 km/h) time of under eight seconds. And with G6's 3.5L V6, more than 85 percent of its peak power is available across a wide rpm range, from just above idle to just below redline. Getting an idea of how G6 will respond to your commands?



G6's 3.5L V6 engine delivers 200 horsepower and 220 lb.-ft. of torque. The engine is also extremely efficient, thanks in part to sequential-port fuel injection that optimizes fuel delivery to each cylinder.



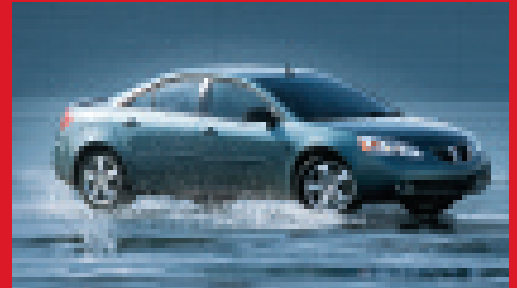
G6's four-speed automatic transmission is the perfect match for the 3.5L V6. Taking G6's performance mission one step further is the GT's manual shift control that incorporates the best of a manual transmission – in an automatic.

G6 ENHANCED CONTROL



STRONG, YET SENSITIVE.

THE SECRET TO EXCEPTIONAL DRIVER CONTROL is the sensitivity of a car's performance technology. Nowhere is that more fundamental than in the steering and braking systems. G6's electronic steering is speed-sensitive, meaning it provides more assist when greater steering effort is required – at lower speeds. At highway speeds the assist is minimized, to increase feel. G6's four-wheel disc braking system is enhanced by a digital brake force controller that senses an impending skid and applies pressure at individual wheels to help maintain stability. And the brake pedal feel is very positive and confidence inspiring. G6 – the strong, sensitive type.



Canada has more than its share of slippery road surfaces. G6 has the technology you need to handle them. G6 base models with available anti-lock brakes include an Enhanced Traction System. G6 GT models feature full-function traction control. Both systems use ABS sensors to detect and help counteract wheelspin.

THE G6 TUTORIAL.

1. SPEED-SENSITIVE STEERING

G6's speed-sensitive electric power steering eliminates the hydraulics of a conventional power steering system, reducing weight and improving fuel efficiency.

2. SUSPENSION SYSTEMS

All G6 models feature four-wheel independent suspension systems with direct-acting stabilizer bars that control body roll.

3. SOLID STRUCTURE

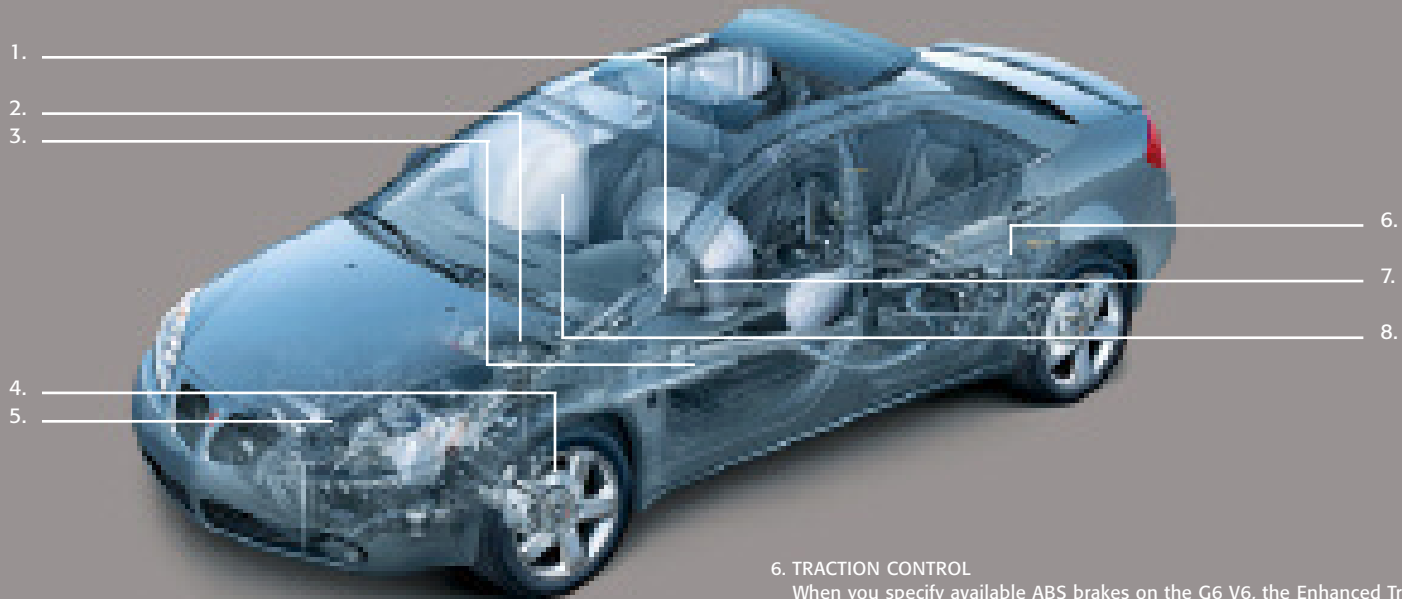
The G6 structure employs high-strength steel and a magnesium cross-car beam to resist bending – a requirement for a meticulously tuned handling system.

4. FOUR-WHEEL DISC BRAKES

Four-wheel disc brakes are standard on all G6 models and include a digital brake force controller. A four-wheel anti-lock braking system is standard on G6 GT and available on G6 V6.

5. 3.5L V6

The standard 3.5L V6 produces 200 hp and 220 lb.-ft. of torque. The engine features an overhead valve configuration and sequential-port fuel injection.



6. TRACTION CONTROL

When you specify available ABS brakes on the G6 V6, the Enhanced Traction System is included. G6 GT features full-function traction control.

7. REMOTE STARTING SYSTEM

The available factory-installed remote vehicle start system enables you to start the engine from a distance of up to 60 m (200 ft.), by simply depressing a button on your key fob. The system can also activate the climate control system, as well as the rear defrost. One additional benefit – the remote starter is also integrated with the factory-installed security system.

8. AIR BAGS

Dual-stage driver and front-passenger frontal air bags* are standard. Head curtain and seat-mounted side air bags* are available.

*A NOTE ON CHILD SAFETY: Always use safety belts and proper child restraints, even in vehicles equipped with air bags. Children are safer when properly secured in a rear seat. Never place a rear-facing infant restraint in the front seat of any vehicle equipped with an active air bag. Refer to the vehicle Owner's Manual and child safety seat instructions for more information. Air bag inflation can cause severe injury or death to anyone too close to the air bag when it deploys. Be sure every occupant is properly restrained.

YOU DON'T NEED TO BE FASCINATED by the inner workings of automotive technology to appreciate a higher level of performance engineering. You just have to be the type of driver who will take full advantage of these benefits every time you get behind the wheel. If that description applies to you, you'll be interested to learn that G6's performance begins at its foundation with the very highly regarded German-engineered Epsilon architecture. It is a platform that is shared with nothing less than the current Saab 9-3 – and it serves as the basis for G6's outstanding handling. Reading about it is no substitute for what you'll feel when you get G6 onto your favourite stretch of road. But it's a start.

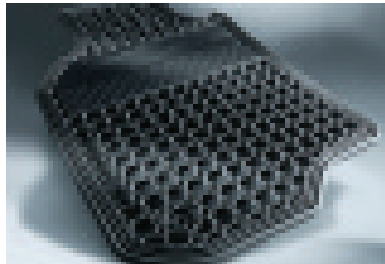
IT'S NOT JUST ANY DRIVER'S CAR.

Start with a vehicle as unique as G6. Then go one step further and reflect exactly who you are, with the addition of GM Accessories. They are the only accessories that are integrated into the process of designing your vehicle, ensuring excellent fit, finish and functionality. And only GM Accessories are backed by GM's 3-year/60,000 km TOTAL™ Warranty.* They can also be included in your new-vehicle lease or finance agreement through GMAC. Ask your dealer for a complete list of the GM Accessories available for G6 or visit gmcanada.com

GM Accessories available for G6 include:

- 17" flangeless aluminum wheels
- Custom exhaust tip
- Deluxe rubber floor mats
- Doorsill applique
- Vent visors
- Front end cover
- Premium trunk organizer
- Trunk liner.

*Whichever comes first, when permanently installed by the dealer at the time you purchase or lease your new vehicle.



A General Motors Subsidiary

Always there. Always ready.



PONTIAC'S PERFORMANCE ENGINEERING includes more than just powertrains and suspension systems. It also includes the unparalleled safety and security of OnStar. OnStar uses advanced communications technology to enhance your peace of mind whenever you're in your Pontiac. All it takes is the touch of a single OnStar button inside your vehicle to connect you with one of our Advisors at the OnStar Centre.* They are standing by, ready to provide support 24 hours a day, 365 days a year.

What can OnStar Advisors do for you? They not only provide information and a range of other direct assistance services – but also, in an emergency, they will contact emergency service providers. G6's OnStar System includes Advanced Automatic Crash Notification (AACN). AACN automatically calls for help if the vehicle is involved in a frontal, rear, or side impact, regardless of whether an air bag is deployed. And if air bags are deployed in your vehicle, an Advisor will contact you to determine if you need assistance. Your Advisor can also perform a remote diagnostic check of your engine and the electrical components in your vehicle.

Another convenient feature is OnStar Personal Calling,** which uses a button to activate the hands-free, voice-activated wireless phone that's integrated into your vehicle. It's there just in case your hand-held cellphone is lost, forgotten or has a low battery. Even better, there are no additional monthly system access fees, or additional long distance and roaming charges. And as a new customer, you will receive 30 trial minutes.

Knowing you have OnStar on board provides a powerful sense of added security. Just ask the more than 100,000 people who have become OnStar subscribers in Canada. How hard does OnStar work for you? The facts speak for themselves: every month in Canada, OnStar Advisors handle an average of 7100 routing calls, 2000 emergency calls, 1900 door unlocks and 1050 Roadside Assistance dispatches.

The OnStar System with one year of the Safe & Sound plan is available on G6 GT models. OnStar also offers the available Directions & Connections plan that provides route information, as well as a host of other convenience services. See your dealer for more details about the plans available for Pontiac G6.

OnStar. Always there. Always ready.

*Subscription Agreement necessary. OnStar services require vehicle electrical system and wireless service to be available and operating for features to function properly. OnStar relies on existing emergency service providers as well as wireless and satellite technologies and is subject to their limitations. Due to the transition of the wireless industry from analogue to digital technology, as of January 1, 2008, OnStar plans to offer service only through equipment that operates on the digital network, which may require the purchase of a system upgrade. Call 1-888-4ONSTAR (1-888-466-7827), see your OnStar Owner's Guide, or visit onstarcanada.com for system information and details.

**Requires OnStar Personal Calling-enabled vehicle, existing OnStar service contract and prepaid calling minutes. OnStar voice recognition system may not recognize all voices. Available in most markets.

STANDARD & OPTIONAL EQUIPMENT

SAFETY AND SECURITY

	G6 V6	G6 GT
Air bags – dual-stage, driver and front-passenger, frontal	S	S
Air bags – driver and front-passenger, seat-mounted side-impact and head curtain	0 ¹	0
Brake/transmission shift interlock	S	S
Door locks – automatic power, programmable with lock-out protection	S	S
Headlights – Daytime Running Lights with automatic light control	S	S
Keyless entry system – remote	S	S
OnStar In-Vehicle Communications and Assistance Service – includes one-year of the Safe & Sound plan	–	0
Pedals – power adjustable brake and accelerator	0 ²	S
Safety belts – front shoulder, height-adjustable	S	S
Safety restraints – LATCH (Lower Anchors and top Tethers for Children), rear seats	S	S
Theft-deterrent system – PASS-Key III+ immobilizer	S	S
Traction assist – Enhanced Traction System (ETS)	0 ³	–
Traction control – electronic, full-function, all-speed	–	S
Trunk – internal manual trunk entrapment release handle	S	S

¹ Requires available anti-lock braking system (ABS) and Canadian Comfort Group.

² Included with available Canadian Comfort Group.

³ Included with available anti-lock braking system (ABS).

MECHANICAL

	G6 V6	G6 GT
Battery – ACDelco with run-down protection	S	S
Brakes – power, 4-wheel disc	S	S
Brakes – 4-wheel anti-lock braking system (ABS)	0 ⁴	S
Drive – front-wheel	S	S
Engine – 3.5L 3500 V6 with SFI Horsepower – 200 @ 5600 rpm, Torque – 220 lb.-ft. @ 3200 rpm	S	S
Engine block heater	S	S
Exhaust system – aluminized stainless steel	S	S
Exhaust system – chrome tip	–	S
Steering – electric power, variable-assist rack-and-pinion	S	S
Suspension – 4-wheel independent	S	S
Suspension – Ride & Handling	–	S
Transmission – 4-speed automatic with overdrive	S	–
Transmission – 4-speed automatic with overdrive and Driver Manual Shift Control	–	S
Vehicle starter system – remote	0	S

⁴ Includes Enhanced Traction System (ETS).

EXTERIOR

	G6 V6	G6 GT
Antenna – rear-window integrated	S	S
Body panels – 2-sided galvanized steel (except roof)	S	S
Fog lights	S	S
Glass – Solar-Ray, tinted	S	S
Mirrors – manual folding, power remote control	S	S
Mouldings – bodyside, body-colour	S	S
Spoiler – rear deck-lid	–	S
Sunroof – power, sliding glass panel with sunshade, express-open feature	0	0
Sunroof – Panoramic, power 4-panel sliding roof	0	0
Tires – P215/60R16 all-season	S	–
Tires – P225/50R17 all-season performance, V-rated	–	S
Wheels – 16" x 6.5" steel with bolt-on wheel covers (A) ⁵	S	–
Wheels – 16" x 6.5" Twin 5-spoke aluminum (B) ⁵	0	–
Wheels – 17" x 6.5" painted aluminum (C) ⁵	–	S
Wheels – 17" x 6.5" Chrome Tech aluminum (D) ⁵	–	0
Windshield wipers – 2-speed with variable delay (intermittent)	S	S

⁵ Wheels shown on page 22.

INTERIOR

	G6 V6	G6 GT
Air conditioning	S	S
Cargo convenience net – rear	0	S
Console – front floor with armrest, storage, front and rear cupholders	S	S
Cruise control – steering-wheel mounted, electronic with resume, coast and decelerate/accelerate features	S	S
Defogger – electric rear-window	S	S
Floor mats – front and rear, carpeted	S	S
Heat ducts – rear-seat, floor	S	S
Instrumentation – analogue cluster (includes speedometer, tachometer, coolant temperature, fuel gauges and low oil level sensor)	S	S
Instrumentation – Driver Information Centre (includes clock, exterior temperature display, GM Oil Life System and programmable features)	S	S
Lights – courtesy, illuminated entry/exit, delayed illumination and theatre dimming	S	S
Smoker's Package – includes ashtray and lighter ⁶	0	0
Steering column – tilt and telescopic adjustable	S	S
Sunshades – LH and RH padded with extensions; illuminated driver vanity mirror	S	–
Sunshades – LH and RH padded with extensions; illuminated driver and front-passenger vanity mirror	–	S
Trunk – release, power remote	S	S
Windows – power, driver's express-down and passenger window lock-out features	S	S
Canadian Comfort Group – includes power driver seat height adjuster, manual driver lumbar adjuster, power adjustable pedals, seatback pockets and cargo convenience net	0	–
Driver's Option Group – includes leather-wrapped steering wheel with sound system controls and leather-wrapped shifter	0	0

⁶ Dealer-installed accessory.

SEATS

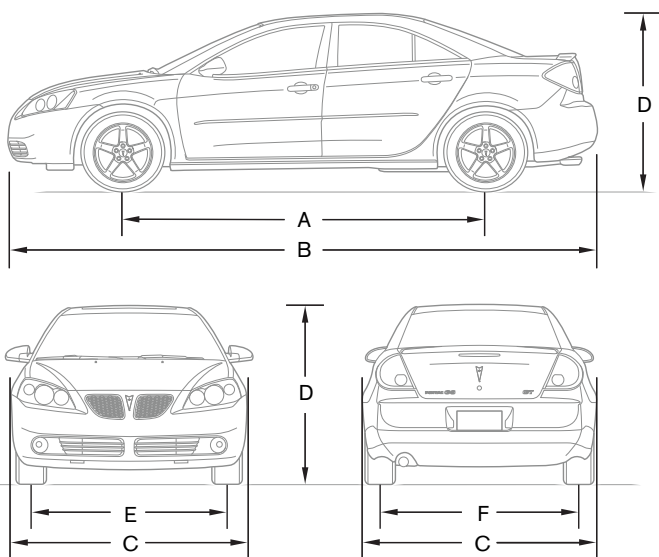
	G6 V6	G6 GT
Custom cloth reclining front bucket seats	S	–
Premium cloth reclining front bucket seats	–	S
Reclining front bucket seats with heated leather-appointed seating surfaces and 6-way power driver adjusters ⁷	–	0
Power driver height adjuster and manual driver lumbar adjuster with driver and front-passenger seatback pockets	0	S
Seatback – rear, 60/40 split-folding	S	S

⁷ Includes leather-wrapped steering wheel with sound system controls.

SOUND SYSTEMS

	G6 V6	G6 GT
All G6 sound systems include an electronically tuned Delco AM/FM stereo with seek up/down, digital clock and TheftLock		
AM/FM stereo with CD player	S	–
AM/FM stereo with CD player, auto tone control and Radio Data System (RDS)	0	S
AM/FM stereo with 6-disc in-dash CD changer, auto tone control and Radio Data System (RDS)	0	0
6-speaker premium sound system	S	–
Monsoon 8-speaker high-performance sound system	–	S

DIMENSIONS



EXTERIOR, MM (IN.)

Wheelbase (A)	2852 (112.3)
Length (B)	4802 (189.0)
Width (C)	1789 (70.4)
Height (D)	1449 (57.0)
Front tread (E)	1519 (59.6)
Rear tread (F)	1534 (60.4)

INTERIOR, MM (IN.) FRONT/REAR

Headroom	1002/923 (39.5/36.3)
Legroom	1073/956 (42.2/37.6)
Shoulder room	1401/1357 (55.2/53.4)
Hip room	1340/1325 (52.7/52.2)

CAPACITIES/WEIGHT

Trunk, L (cu. ft.)	396 (14.0)
Fuel tank, L (imp. gal.)	62 (13.5)
Curb weight (est.), kg (lb.) – G6 V6	1551 (3420)
– G6 GT	1554 (3425)

TOWING

3.5L 3500 V6; 3.05/3.29* final drive ratio; 454 kg (1000 lb.) maximum gross trailer weight**

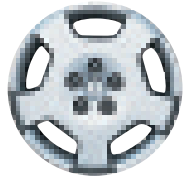
*Included on G6 GT only.

**When properly equipped. Includes weight of trailer, cargo, passengers and equipment. All towing recommendations are subject to change. Trailer tongue load should be 10% of the maximum trailer weight but should not exceed the load rating specified for that vehicle, engine or hitch combinations. See your dealer or refer to the G6 Owner's Manual for details.

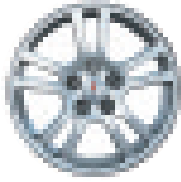


Even more of a good thing – scheduled to debut in the 2005 calendar year, two additional models are set to round out the G6 lineup: the G6 GT 2+2 Coupe and Convertible. The Coupe gives an even sportier spin to G6's styling statement, while the Convertible features the first retractable steel hardtop in its class. Two more ways of increasing your personal performance: G6 GT 2+2 Coupe and Convertible.

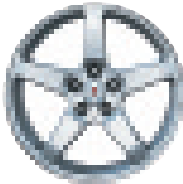
WHEELS.



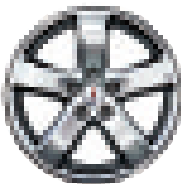
A – 16" steel, bolt-on wheel cover



B – 16" Twin 5-spoke aluminum wheel



C – 17" painted aluminum wheel



D – 17" Chrome Tech aluminum wheel

A word about this brochure

Some of the equipment shown or described throughout this brochure may be available at extra cost. We have tried to make this brochure comprehensive and factual. We reserve the right, however, to make changes at any time, without notice, in prices, colours, materials, equipment, specifications, models and availability. Specifications, dimensions, measurements, ratings and other numbers in this brochure and other printed materials provided at the dealership or affixed to vehicles are approximates based upon design and engineering drawings and prototypes and laboratory tests. Your vehicle may differ due to variations in manufacture and equipment. Since some information may have been updated since the time of printing, please check with your Pontiac dealer for complete details. General Motors of Canada Limited reserves the right to lengthen or shorten the model year for any product for any reason, or to start and end model years at different times.

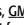
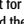
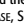

Privacy Statement

At General Motors of Canada Limited ("GM Canada") we respect your privacy and value our relationship with you. Your personal information will be protected, will never be sold, and will be used only by GM Canada, our affiliates, dealers/retailers, and service suppliers (only to provide services). If you wish to be removed from GM Canada marketing communications, would like to limit only certain marketing communications from us; would like a listing of our specific uses or further information about those with whom your information is shared; or for further information about our Privacy Policy and practices, please contact us at 1-800-GM-DRIVE (1-800-463-7483) or through our Web site at gmcanada.com

A word about assembly

Pontiacs are equipped with engines and components produced and assembled by different operating units of General Motors, its subsidiaries and suppliers and these engines and components may change or be obtained from different sources from time to time. All such engines and components are approved for use in Pontiacs. Certain equipment ordered may be unavailable at the time of assembly and we suggest that you verify that your vehicle includes the equipment you ordered, or if there are changes, that they are acceptable to you.

Trademarks

The marks appearing in this Pontiac G6 brochure including, but not limited to: General Motors, , the , the , the , Pontiac, the Pontiac emblem, Built for Drivers, Aztek, Bonneville, G6, Grand Am, Grand Prix, Montana, Montana SV6, Pursuit, Saab, 9-3, Sunfire, Vibe, Wave, and their respective logos, emblems, slogans and vehicle model names and body designs; and other marks such as Delco, SMARTLEASE, Solar-Ray and the TOTAL Warranty are trademarks of General Motors Corporation and/or General Motors of Canada Limited, its subsidiaries, affiliates or licensors.

GMAC is a registered trademark of the General Motors Acceptance Corporation.

OnStar, the OnStar logo and the OnStar button are registered trademarks of the OnStar Corporation.

PASS-Key III+, Monsoon and TheftLock are registered trademarks of Delphi Automotive Systems.

Radio Data System (RDS) is a registered trademark of the U.S. National Association of Broadcasters.

Copyright

© Copyright 2004 General Motors of Canada Limited. All Rights Reserved. All text, images, graphics, and other materials in this G6 brochure are subject to the copyright and other intellectual property rights of General Motors Corporation and/or General Motors of Canada Limited. These materials may not be reproduced, distributed or modified without the express written permission of General Motors Corporation and/or General Motors of Canada Limited.

Printed in Canada, September 2004.

FABRICS.

EXTERIOR/INTERIOR COLOUR COMPATIBILITY

Exterior	Interior	Ebony	Light Taupe
15 – Sedona Beige Metallic*			•
40 – Ivory White		•	•
41 – Black		•	
46 – Stealth Gray Metallic**		•	
56 – Fusion Orange Metallic**		•	
59 – Granite Metallic		•	
63 – Sport Red Metallic		•	•
67 – Liquid Silver Metallic		•	
91 – Electric Blue Metallic**		•	•

*Not available on G6 GT.

**Not available on G6 V6.



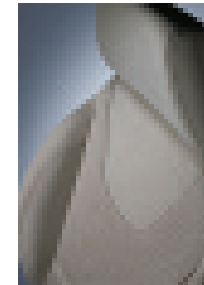
G6 V6
Custom Cloth
Ebony



G6 V6
Custom Cloth
Light Taupe



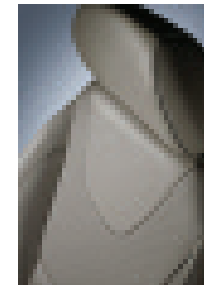
G6 GT
Premium Cloth
Ebony



G6 GT
Premium Cloth
Light Taupe



G6 GT
Nuance Leather
Ebony



G6 GT
Nuance Leather
Light Taupe

EXTERIOR COLOURS.

Colours may not be exactly as illustrated due to restrictions of the printing process. Please see your sales consultant for specific colour and model availability.



15
Sedona Beige
Metallic*



40
Ivory White



41
Black



46
Stealth Gray
Metallic**



56
Fusion Orange
Metallic**



59
Granite
Metallic



63
Sport Red
Metallic



67
Liquid Silver
Metallic



91
Electric Blue
Metallic**

PONTIAC G6 BUILT FOR DRIVERS

AZTEK BONNEVILLE GRAND AM GRAND PRIX G6 MONTANA MONTANA SV6 PURSUIT SUNFIRE VIBE WAVE

HOW DO YOU DESIGN AND BUILD VEHICLES to respond precisely and instantaneously to driver input? With a rigorous and scientific approach to the engineering of every vehicle system and component. This is what separates the Pontiac family of vehicles from everything else on the road. Built to strengthen the connection between drivers and their vehicles. Pontiac. Built for Drivers.

COMMITMENT

Expect nothing less than a 100% commitment. We're committed to engineering and manufacturing Pontiac G6 so that it is an absolute pleasure to drive. And that's just the beginning. We're also committed to making the ownership experience just as responsive to your specific needs. You'll find that our comprehensive support programs make it easier to purchase or lease a Pontiac. They also help to protect you and your vehicle down the road. A powerful example of the level of protection you can expect is the GM TOTAL™ Warranty. It's so thorough it covers your vehicle from the roof right down to the tires. So when you drive off the lot of your Pontiac dealership, you can do so with total confidence. Peace of mind is knowing that your vehicle is built for the long haul, and is backed by a comprehensive warranty.

THE GM TOTAL™ WARRANTY:†

The GM TOTAL™ Warranty is your promise of total warranty protection. It covers every new Pontiac G6 for 3 years or 60,000 km.* Complete vehicle repairs are covered,** including parts and labour, with no deductible. The warranty includes:

- 3-year/60,000 km* complete vehicle repair coverage
- 6-year/160,000 km* corrosion perforation coverage
- 8-year/130,000 km* coverage on catalytic converters and powertrain control modules (PCMs).

*Whichever comes first.

**To correct any defects in material or workmanship occurring during the warranty period. Regular maintenance is not included, nor is excessive wear and tear caused by reckless or negligent driving.

OTHER OWNERSHIP PRIVILEGES AND PROGRAMS:‡

- **Roadside Assistance** – 24/7 service via toll-free number during your warranty period, anywhere in Canada or the United States
- **Courtesy Transportation** – may be offered during warranty period
- **GM Protection Plan (GMPP)** – the only extended service contract backed by the resources and commitment of General Motors; GMPP may be purchased at the time of your sale or lease, or subsequently
- **GM Mobility Program** – you may be eligible for reimbursement of up to \$1000 (taxes included) for adaptive equipment for your GM vehicle
- **GM Accessories** – personalize your vehicle with GM Accessories, specifically engineered for your new GM vehicle
- **GM Goodwrench Service** – with GM-certified technicians and GM-approved parts, nobody knows your GM vehicle better.

TO HELP YOU PURCHASE OR LEASE A NEW VEHICLE:

- **GMAC Financing** – on-the-spot financing at your GM dealership††
- **GMAC SMARTLEASE** – a smart alternative to traditional financing††
- **GM Graduate Program** – recent graduates may qualify for up to \$1000 (taxes included) off any new GM vehicle†
- **The GM Card** – eligible cardholders may be able to redeem up to \$3500 in GM Card® Earnings toward the total purchase price or lease down payment on selected vehicles. For more information on The GM Card please call 1-800-461-3279.†

INFORMATION RESOURCES:

You can find more information about these programs from your GM dealer, or at these information centres:

- The GM Web site at gmcanada.com
- The GM Customer Communication Marketing Centre at 1-800-GM-DRIVE (1-800-463-7483 or 1-800-263-3830 for TDD users) – for information about any GM product or service, including The GM Card and The GM Mobility Program
- For information about GMAC visit the GM Web site or call 1-800-616-4622.

†Conditions and limitations apply.

†† Subject to eligibility.

