

05
MONTANA SV6

PONTIAC

05 MONTANA SV6



PONTIAC  BUILT FOR DRIVERS

THE 05 MONTANA SV6.

Montana SV6 Regular Wheelbase, shown in Dark Blue Metallic.

Montana SV6 Extended Wheelbase, shown below in Liquid Silver Metallic.



ENERGETIC.

IT'S BUILT FOR DRIVERS. BUT THE FAMILY IS ALWAYS WELCOME.

THEY SAY THAT ONCE YOU HAVE A FAMILY, EVERYTHING CHANGES. What really needs to change is that outdated attitude. It's time to challenge the status quo with an entirely different approach to family driving. One that acknowledges that parents can be drivers, too – in the fullest sense of the word. Introducing the 100 percent pure driver-oriented Pontiac Montana SV6. Where high functionality meets an equally high level of performance. With the enhanced safety and security of the standard OnStar System. And your choice of Regular or Extended Wheelbase models. Front-wheel drive or all-wheel drive. For drivers with families, and with an energetic taste for adventure, there's only one choice. The Pontiac Montana SV6. Built for Drivers. Find more information about the new Pontiac Montana SV6 at gmcanada.com

PONTIAC  BUILT FOR DRIVERS

TAKE A FIRM STANCE.

REGULAR WHEELBASE



Montana SV6 Regular Wheelbase, shown in Dark Blue Metallic, with available equipment.
With its shorter wheelbase, this Montana SV6 delivers nimble handling and enhanced manoeuvrability.

TAKE A STAND against mundane forms of family travel – and in favour of an engaging approach to driving. Montana SV6's personality is revealed by its aggressive stance, and the powerful presence created by the raised hood and prominent twin-port grille. The available 17-inch aluminum wheels further reinforce the impression that this is one family vehicle dedicated to more than simply ferrying the squad to the next soccer practice. The van that places you in the pole position, on course for your next engagement.




**MINIVAN IS THE CATEGORY.
PERFORMANCE IS THE INCLINATION.**

EXTENDED WHEELBASE



Montana SV6 Extended Wheelbase, shown in Liquid Silver Metallic with available equipment.
The Extended Wheelbase translates its increased overall length into significantly more cargo capacity – 467 L (16.5 cu. ft.) more.

A silver minivan is shown from a low-angle, front-quarter perspective, driving on a paved road. The background features a modern building with a white, perforated facade and a hillside with dry, brownish vegetation under a clear blue sky. The overall scene is brightly lit, suggesting a sunny day.

NOW THERE'S A VAN THAT DARES to be judged as much by the merits of its technology as by its functionality. The 200 horsepower 3500 V6 engine leads the way. Four-wheel disc brakes feature large front and rear rotors, in addition to the standard four-wheel anti-lock braking system. But the real technological innovation is exemplified by the advanced Versatrak on-demand all-wheel-drive system on AWD models, and the available StabiliTrak stability enhancement system that helps eliminate understeer and oversteer. In short, a tour de force of performance technology. That just happens to be categorized as a minivan.

THE EQUIVALENT OF AN ALL-ACCESS PASS.

ACCESSIBILITY



Montana SV6 Extended Wheelbase, shown in Liquid Silver Metallic with standard dual sliding doors, and available equipment.

MONTANA SV6 IS ALL ABOUT THE FREEDOM to move about as you please. That begins behind the scenes – even before you get to your assigned seat. In fact, you can get a head start with the available first-in-its-class* factory-installed remote vehicle starter. It enables you to start the engine from a distance of up to 60 m (200 ft.), by pushing a button on your key fob. Access is facilitated by the presence of standard dual sliding side doors or available power dual sliding side doors. Once inside, you'll find the cabin very inviting, with standard seating for seven, and a very generous cargo capacity. Montana SV6 – opening up a new era in family driving.

*Based on 2004 Model Year data and the latest competitive information available at time of printing. Excludes other GM vehicles.



The image shows the interior of a vehicle, specifically the front and second rows. The seats are upholstered in a light-colored, textured fabric with a grid-like pattern. The front seats have a high backrest and a headrest. The second row consists of two bucket seats with a central console between them. The overall lighting is dim, highlighting the texture of the seats.

READY WHEN YOU ARE.

INTERIOR

YOU DON'T HAVE TO CHOOSE between comfort and versatility – choose Montana SV6 and you get both. The idea is that seating can be flexible enough to accommodate changes of plan, yet comfortable enough to support the driver and passengers during extended adventures. Available heated power six-way driver and front-passenger seats with leather seating surfaces allow you to add another word into the comfort equation: refinement. While standard modular flip-and-fold bucket seats in the second row and the 50/50 removable folding split rear bench seat allow you to reconfigure the interior on demand. Montana SV6 – it's ready whenever you are.



INTERIOR



The Montana SV6 instrument panel clearly reveals its orientation to drivers.

THE BEST SEAT IN THE HOUSE.

THE MOST EXCITING FORM OF ENTERTAINMENT on board Montana SV6 can best be viewed from the driver's seat. That's where the emphasis on performance is fully revealed. The look is clean and uncluttered. The effect is a singular focus on the act of driving. Just take a look at the white-on-black analogue gauge cluster, or scan the input you can gain from the Driver Information Centre. Not that Montana SV6 is dedicated to the driver alone; features like a standard CD and MP3 player and an available rear air conditioner and heater make everyone feel welcome.

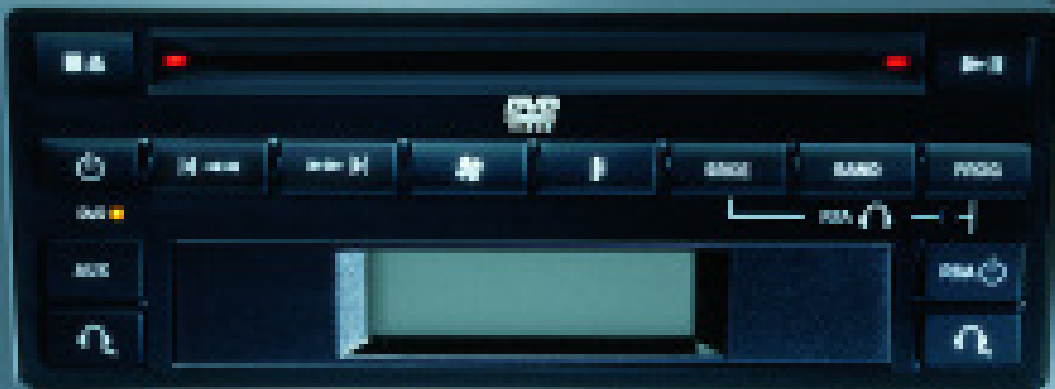


The principle is that a better-informed driver is simply a better driver. The technology is provided by the available Driver Information Centre, which displays the status of up to 15 separate vehicle functions.



Enhancing both comfort and spaciousness, an available seven-passenger seating plan that features second-row captain's chairs. You can even opt for the special feel of available leather seating surfaces in the first two rows.

ENTERTAINMENT



The Rear-Seat Entertainment System features a fold-down 178 mm (7 in.) LCD wide-screen monitor that is mounted on the Overhead Rail System.

NOW PLAYING.



A

MONTANA SV6 TAKES THE NOTION OF FAMILY ENTERTAINMENT to an entirely new level. With a world of entertainment options, from an in-dash six-disc CD player to a DVD/CD/MP3 Rear-Seat Entertainment System that features a wide-screen LCD monitor mounted on overhead rails. Also available is the Mobile Digital Media hard drive unit that can store more movies and music than you could play on a cross-country tour. Your crew will be giving Montana SV6's entertainment package two thumbs up.



B



B



C

A. HEADPHONES

Two dual-channel wireless remote headphones are included with the Rear-Seat Entertainment System. That means your rear-seat passengers can listen to one audio source, while you listen to another up front.

B. REAR-SEAT ENTERTAINMENT SYSTEM

The available Rear-Seat Entertainment System gives you a choice of DVD, CD and MP3 playback capability. And you have an available place to store your discs – in the compartment provided on the Overhead Rail System.

C. MOBILE DIGITAL MEDIA

In 2005, Montana SV6 becomes the first vehicle in its class* to offer Mobile Digital Media technology. The available system is powered by PhatNoise™ and features a palm-sized 40 gig hard drive. It stores movies, games and audio tracks and can be easily removed for connection to a desktop or laptop computer.

*Based on 2004 Model Year data and the latest information available at time of printing. Excludes other GM vehicles.



CONVENIENCE/STORAGE

One seven-passenger seating plan features reclining front bucket seats, available second-row captain's chairs, and a third-row three-passenger, 50/50 removable folding split-bench seat. Shown here with available leather seating surfaces in the first two rows.

UP TO 14 STORAGE COMPARTMENTS. HECK, THAT'S TWO PER PERSON.

WHERE THERE ARE PEOPLE, there's stuff. Lots of stuff. Indispensable stuff. That's why Montana SV6 offers up to 14 compartments to put your stuff in. Because there's no such thing as too much storage space. Particularly when it comes to those convenient enclosed compartments that handle all the regular travelling paraphernalia – like wallets, maps and sunglasses. What better place to keep them than in the available bins for the standard Overhead Rail System. The bins take the idea of an airplane's overhead compartments and bring them right down to earth – and within easy reach.



A. OVERHEAD STORAGE

The innovative Overhead Rail System incorporates a series of snap-in storage bins to keep gear easily accessible, yet out of the way. The Overhead Rail System also houses the available rear climate system and available Rear-Seat Entertainment System.

B. REAR CARGO CONVENIENCE CENTRE

The rear seat integrates with the available rear cargo convenience centre to provide another secure storage location. It features two individual bins that help keep your gear organized and ready to go.

C. SEATBACK STORAGE

Available seatback storage compartments are located on the back of the front bucket seats. These storage compartments are also located on the back of the available second-row captain's chairs.

D. SECOND-ROW UTILITY BOX

The available second-row utility box provides a handy location for CDs and DVDs. It also features cupholders, and a convenient surface for writing or playing games.

3.5L V6

200 HP

220 LB.-FT. TORQUE

PERFORMANCE



GETS OFF THE LINE, AND THEN KEEPS YOU ON IT.



THE 200 HP 3500 V6 ENGINE gets you off the starting line authoritatively – assisted by the precision of the electronic throttle control. It eliminates the mechanical link between the accelerator pedal and throttle, and uses drive-by-wire electronics for a more direct response. Once you're underway, the available StabiliTrak stability enhancement system helps keep you pointed in your intended direction. It reacts within thousandths of a second whenever a lateral skid is detected, applying brake pressure automatically at the appropriate wheel. The technology is also as reliable as it is advanced. And it's backed by a 5-year/100,000 km Extended Powertrain Warranty.* Montana SV6 – the next step forward in van performance.

*Whichever comes first.



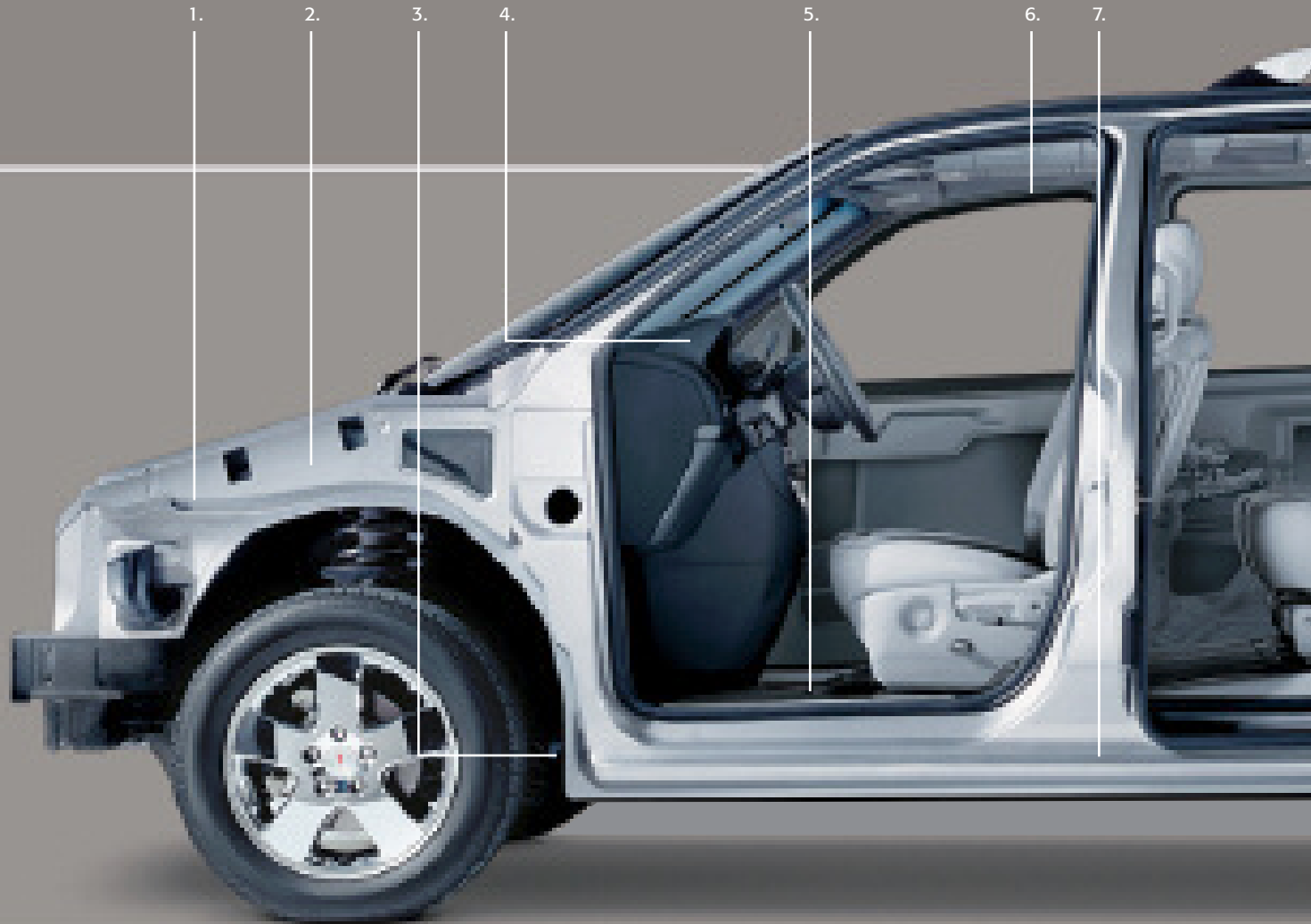
New vehicle – new engine. Montana SV6's 3500 V6 engine produces 200 horsepower and 220 pounds-feet of torque. The engine employs sequential-port fuel injection to optimize the efficiency of the air/fuel ratio, for excellent fuel economy.

Front-wheel drive Montana SV6 models offer an available all-speed, full-function traction control system. It monitors and automatically adjusts engine, transmission and brake functions to enhance traction while accelerating on slippery surfaces.

Montana AWD's advanced on-demand Versatrak system transfers up to 44 percent of power to the rear wheels when front-wheel slippage is detected. The system can also transfer torque side to side, directing power to the rear wheel with the best traction.

OUT OF SIGHT, BUT NOT OUT OF MIND.

TECHNOLOGY



1. ADVANCED AERODYNAMICS

The styling is bold, yet the form is exceedingly aerodynamic. That's thanks in part to the fact that the fenders, fascia and hood are all integrated for smoother airflow.

2. 3500 V6 ENGINE

The 200 hp 3500 V6 engine isn't only powerful, it is also very quiet. That is partly due to the laminated exhaust manifold that eliminates ringing and vibration.

3. HYDROFORMED ENGINE CRADLE

Hydroformed steel was chosen as the material for the engine cradle because it is exceptionally strong, yet light in weight. The result is excellent structural integrity, as well as reduced noise and vibration.

4. INSTRUMENT PANEL

The instrument panel is manufactured using polypropylene. It provides an exceptionally supple, yet firm feel to both the flush and textured grain surfaces.

WHILE MONTANA SV6 IS SURE TO MAKE A STRIKING IMPRESSION, with its sporty styling and driving personality, there's more to this story than meets the eye. And that's a very good thing. In fact, many of Montana SV6's most advanced features are the ones you'll never see, and rarely think about. An excellent example is the available rear level-control suspension system that automatically adjusts the rear ride height to compensate for different loads. The result is that both the handling characteristics and headlight aiming are optimized based on the load you're carrying. Pontiac's engineers already thought of it, so you don't have to.

8.



5. NOISE-DAMPENING MATERIALS

Montana SV6 is not only defined by its performance and utility – it also provides an impressively quiet ride, thanks to the use of noise-dampening materials in the floor, the head-liner and the doors.

6. EXCELLENT FIT AND FINISH

You can literally see Pontiac's commitment to outstanding manufacturing quality in the new head-liner that provides a tighter, cleaner fit.

7. SAFETY CAGE CONSTRUCTION

A reinforced protective safety cage surrounds the entire passenger compartment. It employs high-strength steel in the A-pillar, rocker panels, and mid-rails to help minimize the impact of a collision.

8. COMFORTABLE SEATING

It's not just the contours of Montana SV6's seating that are responsible for the high level of comfort that driver and passengers alike will enjoy. Materials were selected specifically for their comfort characteristics.

IT'S NOT FOR JUST ANY DRIVER.

START WITH A VEHICLE as unique as Montana SV6. Then go one step further and reflect exactly who you are, with the addition of GM Accessories. They are the only accessories that are integrated

into the process of designing your vehicle, ensuring excellent fit, finish and functionality. And only GM Accessories are backed by GM's 3-year/60,000 km TOTAL™ Warranty.* They can also be

ACCESSORIES



GM Accessories available for Montana SV6 include:

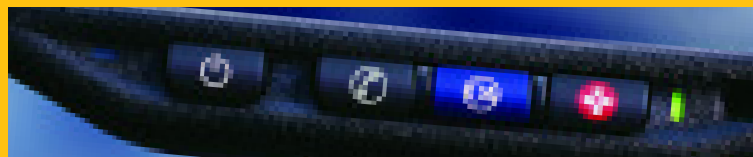
- Media kit
- Utility box
- Sit-N-lift
- Bike carrier
- Snake light
- Sunglasses holder
- Rear bumper protector
- First-aid kit



Accessories

included in your new-vehicle lease or finance agreement through GMAC. Ask your dealer for a complete list of the GM Accessories available for Montana SV6, or visit gmcanada.com

*Whichever comes first, when permanently installed by the dealer at the time you purchase or lease your new vehicle.



PONTIAC'S PERFORMANCE ENGINEERING includes more than just powertrains and suspension systems. It also includes the unparalleled safety and security of OnStar. OnStar uses advanced communications technology to enhance your peace of mind whenever you're in your Pontiac. All it takes is the touch of a single OnStar button inside your vehicle to connect you with one of our Advisors at the OnStar Centre.* They are standing by, ready to provide support 24 hours a day, 365 days a year.

What can OnStar Advisors do for you? They not only provide information and a range of other direct assistance services – but also, in an emergency, they will contact emergency service providers. And if air bags are deployed in your vehicle, an Advisor will contact you to determine if you need assistance. Your Advisor can also perform a remote diagnostic check of your engine and the electrical components in your vehicle.

Another convenient feature is OnStar Personal Calling,** which uses a button to activate the hands-free, voice-activated wireless phone that's integrated into your vehicle. It's there just in case your hand-held cellphone is lost, forgotten or has a low battery. Even better, there are no additional monthly system access fees, or additional long distance and roaming charges. And as a new customer, you will receive 30 trial minutes.

Knowing you have OnStar on board provides a powerful sense of added security. Just ask the more than 100,000 people who have become OnStar subscribers in Canada. How hard does OnStar work for you? The facts speak for themselves: every month in Canada, OnStar Advisors handle an average of 7100 routing calls, 2000 emergency calls, 1900 door unlocks and 1050 Roadside Assistance dispatches.

The OnStar System with one year of the Safe & Sound plan is included on all Montana SV6 models. OnStar also offers the available Directions & Connections plan that provides route information, as well as a host of other convenience services. See your dealer for more details about the plans available for Pontiac Montana SV6.

OnStar. Always there. Always ready.

*Subscription Agreement necessary. OnStar services require vehicle electrical system and wireless service to be available and operating for features to function properly. OnStar relies on existing emergency service providers as well as wireless and satellite technologies and is subject to their limitations. Call 1-888-4ONSTAR (1-888-466-7827), see your OnStar Owner's Guide, or visit onstarcanada.com for system information and details.

**Requires OnStar Personal Calling-enabled vehicle, existing OnStar service contract and prepaid calling minutes. OnStar voice recognition system may not recognize all voices. Available in most markets.

STANDARD & OPTIONAL EQUIPMENT

SAFETY AND SECURITY	1SA RWB/EWB	1SB RWB/EWB	1SC RWB/EWB/AWD
Air bags – dual-stage, driver and front-passenger, frontal	S	S	S
Air bags – driver and front-passenger, seat-mounted side-impact	0	0	S
Brake/transmission shift interlock	S	S	S
Door locks – power, programmable delayed locking	S	S	S
Door locks – sliding side door, child-security	S	S	S
Headlights – Daytime Running Lights with automatic light control	S	S	S
Keyless entry system – remote	S	S	S
OnStar In-Vehicle Communications and Assistance Service – includes one-year Safe & Sound plan	S	S	S
Safety restraints – front-seat pre-tensioners	S	S	S
Safety restraints – LATCH (Lower Anchor and top Tether for Children), 2nd-row	S	S	S
Theft-deterrent system – PASS-Key III	S	S	S
Traction control – electronic, full-function, engine and brakes (FWD)	–	0	0
Ultrasonic rear parking assist – audible/visible rear obstacle detection ¹	–	–	–/0/0
Security Package – includes content theft-deterrent system with audible/visible alarm and universal (HomeLink) 3-channel programmable garage door opener	–	0	0

¹ Requires power passenger-side sliding door.

MECHANICAL	1SA RWB/EWB	1SB RWB/EWB	1SC RWB/EWB/AWD
Battery – ACDelco with run-down protection	S	S	S
Brakes – power, 4-wheel disc	S	S	S
Brakes – 4-wheel anti-lock braking system (ABS)	S	S	S
Drive – front-wheel (FWD)	S	S	S/S/–
Drive – Versatrak, all-wheel drive, fully automatic on-demand	–	–	–/–/S
Engine – 3.5L 3500 V6 with SFI Horsepower – 200 @ 5200 rpm, Torque – 220 @ 4000 rpm	S	S	S
Engine block heater	S	S	S
Exhaust system – aluminized stainless steel	S	S	S
StabiliTrak – vehicle dynamic control, integrated chassis control system ²	–	–	–/0/–
Steering – power, rack-and-pinion	S	S	S
Suspension – Smooth Ride	S	S	S/S/–
Suspension – Sport with twist beam rear suspension, includes automatic rear level control and inflator kit	–	0	0/0/–
Suspension – Sport, 4-wheel independent, includes automatic rear level control and inflator kit	–	–	–/–/S
Trailer Towing Package – 1588 kg (3500 lb.) capacity, includes heavy-duty radiator and transmission oil cooler, trailer wiring harness, heavy-duty signal flasher and higher output alternator (does not include hitch) ³	–	–/0	–/0/0
Transmission – 4-speed automatic with overdrive	S	S	S
Vehicle starter system – remote	0	0	S

² Requires traction control and Sport suspension.

³ Includes automatic rear level control and accessory inflator kit.

EXTERIOR	1SA RWB/EWB	1SB RWB/EWB	1SC RWB/EWB/AWD
Body panels – two-sided galvanized steel (except roof and aluminum engine hood)	S	S	S
Glass – Solar-Ray tinted, including windshield; deep-tinted behind front doors	S	S	S
Mirrors – foldaway, power remote control, heated	S	S	S
Mouldings – lower bodyside cladding (Charcoal Gray)	S	S	S
Rear spoiler	–	–/0	–/0/0
Roof rack – roof-mounted, black, side rails only	0	S	S
Roof rack – roof-mounted, brushed aluminum finish, side rails only ⁴	–	–/0	–/0/0
Side doors – dual, side sliding	S	S	S
Side door – power passenger-side, sliding with remote open/close feature	–	0	0
Side door – power driver-side, sliding with remote open/close feature ⁵	–	–	–/0/0

EXTERIOR (CONT'D)	1SA RWB/EWB	1SB RWB/EWB	1SC RWB/EWB/AWD
Tires – P215/70R16 all-season touring	S/–	S/–	–
Tires – P225/60R17 all-season touring	–/S	–/S	S
Wheels – 16" x 6.5" steel with bolt-on wheel covers (A) ⁶	S/–	S/–	–
Wheels – 17" x 6.5" steel with bolt-on wheel covers (C) ⁶	–/S	–/S	–
Wheels – 17" x 6.5" aluminum (B) ⁶	–	0	S
Wheels – 17" x 6.5" chromed aluminum wheels (D) ⁶	–	–	0
Windshield wipers – 2-speed with variable delay (intermittent)	S	S	S
Wiper/washer – rear-window (fixed intermittent)	S	S	S
Sport Package 1 – includes Sport suspension, traction control, 17" x 6.5" aluminum wheels (B) ⁶ , and 2nd-row captain's chairs w/3rd-row 50/50 removable folding split-bench seat	–	0 ⁷ /–	–
Sport Package 2 – includes Sport suspension, traction control, 17" x 6.5" aluminum wheels (B) ⁶ , 2nd-row captain's chairs w/3rd-row 50/50 removable folding split-bench seat and rear spoiler	–	–/0 ⁷	–
Sport Package 3 – includes Sport suspension, traction control, 17" x 6.5" chromed aluminum wheels (D) ⁶ , and 2nd-row captain's chairs w/3rd-row 50/50 removable folding split-bench seat	–	–	0/–/–
Sport Package 4 – includes Sport suspension, traction control, 17" x 6.5" chromed aluminum wheels (D) ⁶ , 2nd-row captain's chairs w/3rd-row 50/50 removable folding split-bench seat and rear spoiler	–	–	–/0/–

⁴ Not available with rear spoiler, Sport Package 2 or Sport Package 4.

⁵ Requires power passenger-side sliding door, Rear-Seat Entertainment System and Ultrasonic rear parking assist.

⁶ Wheels shown on page 26.

⁷ Requires seat-mounted side-impact air bags or power 6-way driver seat adjuster.

INTERIOR	1SA RWB/EWB	1SB RWB/EWB	1SC RWB/EWB/AWD
Air conditioning – with particle filter	S	S	S
Air conditioning – rear (includes rear heater)	–/0	–/0	–/S/S
Auxiliary power outlet – front	S	S	S
Auxiliary power outlet – rear 110 volt	–	–	–/0/0
Cargo convenience net – rear	0	0	S/–/–
Cargo convenience centre – rear, removable four compartment cargo organizer, includes cargo convenience net	–/0	–/0	–/S/S
Console – Overhead Rail System	S	S	S
Console – overhead storage bin, Overhead Rail System mounted	0	0	S
Console – Lifestyle overhead storage bin, includes CD/DVD case and First Aid Kit	0	0	0
Cruise control – electronic with resume, coast and decelerate/accelerate features	0	S	S
Defogger – electric rear-window	S	S	S
Floor mats – front, 2nd- and 3rd-row, carpeted	S	S	S
Instrumentation – analogue gauges (includes tachometer, speedometer, coolant temperature and fuel gauges), low oil pressure, GM Oil Life System and low coolant level indicator	S	S	S
Instrumentation – Driver Information Centre	–	S	S
Lighting – overhead courtesy, roof rail courtesy, cargo area, reading lights, programmable delayed entry/exit with ignition key removal and theatre dimming	S	S	S
Retained accessory power	S	S	S
Steering column – tilt adjustable	S	S	S
Steering wheel – leather-wrapped with sound system controls	–	–	S
Storage – cupholders and a centre non-locking console, front door map pockets and glovebox	S	S	S
Sunshades – LH and RH padded; vanity mirrors	S	S	–
Sunshades – LH and RH padded; illuminated vanity mirrors	–	–	S
Utility box – 2nd-row ⁸	0	0	–
Windows – power, with driver's express-down feature	S	S	S
Windows – power, swing-out rear quarter	S	S	S
Convenience Package – includes power 6-way driver seat adjuster and power passenger-side sliding side door	–	0	–

⁸ Regular production accessory, dealer installed. Available with 2nd-row flip-and-fold bucket seats only.

SEATS

	1SA RWB/EWB	1SB RWB/EWB	1SC RWB/EWB/AWD
Cloth reclining front bucket seats with inboard armrests, two 2nd-row flip-and-fold modular bucket seats and 3rd-row 50/50 removable folding split-bench seat (7-passenger)	S	S	–
Cloth reclining front bucket seats with inboard armrests, two 2nd-row captain's chairs and 3rd-row 50/50 removable folding split-bench seat (7-passenger)	0 ⁹	0 ⁹	S
Leather seating surfaces , heated, reclining front bucket seats with inboard armrests, two 2nd-row captain's chairs and 50/50 removable folding split-bench seat (7-passenger) ¹⁰	–	–	–/0/0
Power 6-way driver adjuster	–	0 ¹¹	S
Front row – seatback storage compartments	S	S	–
Front row – utility tray	0 ¹²	0 ¹³	–
Front and 2nd-row utility trays and seatback storage compartments	–	–	S

⁹ Includes 1st- and 2nd-row utility trays. Requires seat-mounted side-impact air bags.

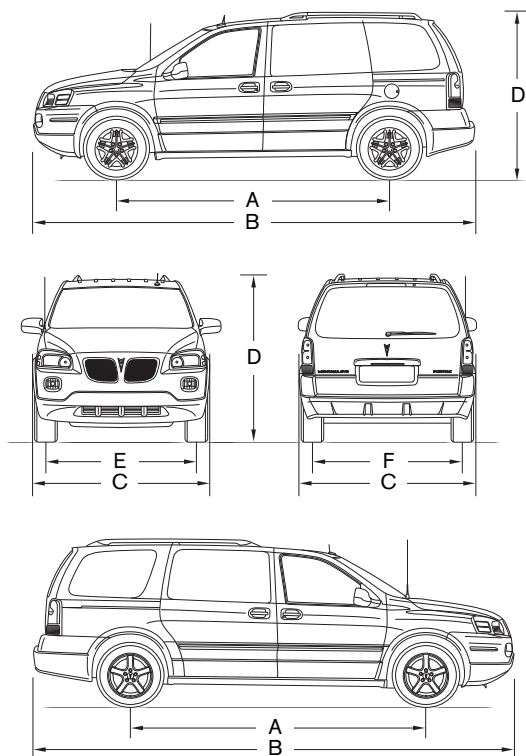
¹⁰ Leather seating surfaces included on 1st- and 2nd-rows only, 3rd-row bench is vinyl covered. Requires DVD Entertainment System. Includes power 6-way front passenger seat adjuster.

¹¹ Requires front-row utility tray.

¹² Requires seat-mounted side-impact air bags. Included when 2nd-row captain's chairs are specified.

¹³ Requires seat-mounted side-impact air bags or 6-way power driver-adjuster. Included when 2nd-row captain's chairs are specified.

DIMENSIONS



ENTERTAINMENT SYSTEMS

	1SA RWB/EWB	1SB RWB/EWB	1SC RWB/EWB/AWD
All Montana SV6 sound systems include an electronically tuned Delco AM/FM stereo with seek/scan, auto tone control, Radio Data System (RDS), TheftLock and digital clock			
AM/FM stereo with CD/MP3 player	S	S	S
AM/FM stereo with 6-disc in-dash CD/MP3 player	–	0	0
Rear-Seat Entertainment System – includes overhead fold-down 178 mm (7 in.) LCD colour monitor, DVD/CD/MP3 player, video camera and video game (RCA) input jacks, 2 wireless headphones with individual volume controls	0	0	0
2 additional wireless headphones ¹⁴	0	0	0
Speaker system – 4 extended-range coaxial speakers	S/–	S/–	S/–/–
Speaker system – 8 extended-range coaxial speakers	–/S	–/S	–/S/S

¹⁴ Requires Rear-Seat Entertainment System.

S – Standard. 0 – Optional individually or in combination with other optional equipment.

EXTERIOR, MM (IN.)

	REGULAR WHEELBASE	EXTENDED WHEELBASE
Wheelbase (A)	2870 (113.0)	3077 (121.1)
Length (B)	4867 (191.6)	5222 (205.6)
Width (C)	1830 (72.0)	1830 (72.0)
Height (D)	1790 (70.5)	1830 (72.0)
Front tread (E)	1586 (62.4)	1586 (62.4)
Rear tread (F)	1592 (62.7)	1590 (62.6)*

INTERIOR, MM (IN.), FRONT/2ND-ROW/3RD-ROW

Headroom	1011/990/964 (39.8/39.0/38.0)	1011/988/968 (39.8/38.9/38.1)
Legroom	1015/952/870 (40.0/37.5/34.3)	1015/987/920 (40.0/38.9/36.2)
Shoulder room	1521/1576/1528 (59.9/62.0/60.2)	1521/1555/1236 (59.9/61.2/48.7)
Hip room	1417/1618/1228 (55.8/63.7/48.3)	1417/1565/1226 (55.8/61.6/48.3)

CAPACITIES/WEIGHT

Cargo, L (cu. ft.)		
– with all-seats in position	498 (17.6)	762 (26.9)
– with 3rd-row seats removed	2011 (71.0)	2095 (74.0)
– with 2nd- and 3rd-row seats removed	3398 (120.0)	3865 (136.5)
Fuel tank, L (imp. gal.)	75.7 (16.7)	94.7 (20.8)
Curb weight (est.), kg (lb.)	1838 (4052)	1983 (4372) – FWD 2057 (4535) – AWD

*AWD – 1599 (63.0).

TOWING

3.5L 3500 V6 with SFI (FWD)	3.29 final drive ratio/1588 kg (3500 lb.)* maximum gross trailer weight**
3.5L 3500 V6 with SFI (AWD)	3.69 final drive ratio/1588 kg (3500 lb.)* maximum gross trailer weight**

*Requires V92 Trailer Towing Package. Capacity applies with no more than two people. Without V92 maximum tailoring capacity is 907 kg (2000 lb.).

**Includes weight of trailer, cargo, passengers and equipment. All towing recommendations are subject to change. Trailer tongue load should be 10% of the maximum trailer weight but should not exceed the load rating specified for that vehicle, engine or hitch combination. See your dealer or refer to the Montana SV6's Owner Manual for details.

WHEELS.



- A.** 16" steel, bolt-on wheel cover.
- B.** 17" aluminum wheel.
- C.** 17" steel, bolt-on wheel cover.
- D.** 17" chromed aluminum wheel.

A word about this brochure

Some of the equipment shown or described throughout this brochure may be available at extra cost. We have tried to make this brochure comprehensive and factual. We reserve the right, however, to make changes at any time, without notice, in prices, colours, materials, equipment, specifications, models and availability. Specifications, dimensions, measurements, ratings and other numbers in this brochure and other printed materials provided at the dealership or affixed to vehicles are approximates based upon design and engineering drawings and prototypes and laboratory tests. Your vehicle may differ due to variations in manufacture and equipment. Since some information may have been updated since the time of printing, please check with your Pontiac dealer for complete details. General Motors of Canada Limited reserves the right to lengthen or shorten the model year for any product for any reason, or to start and end model years at different times.

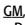

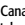
Privacy Statement

At General Motors of Canada Limited ("GM Canada") we respect your privacy and value our relationship with you. Your personal information will be protected, will never be sold, and will be used only by GM Canada, our affiliates, dealers/retailers, and service suppliers (only to provide services). If you wish to be removed from GM Canada marketing communications, would like to limit only certain marketing communications from us; would like a listing of our specific uses or further information about those with whom your information is shared; or for further information about our Privacy Policy and practices, please contact us at 1-800-GM-DRIVE (1-800-463-7483) or through our Web site at gmcanada.com

A word about assembly

Pontiacs are equipped with engines and components produced and assembled by different operating units of General Motors, its subsidiaries and suppliers and these engines and components may change or be obtained from different sources from time to time. All such engines and components are approved for use in Pontiacs. Certain equipment ordered may be unavailable at the time of assembly and we suggest that you verify that your vehicle includes the equipment you ordered, or if there are changes, that they are acceptable to you.

Trademarks

The marks appearing in this Pontiac Montana SV6 brochure including, but not limited to: General Motors, , the  Canada emblem, the  Accessories logo, Pontiac, the Pontiac emblem, Built for Drivers, Aztek, Bonneville, G6, Grand Am, Grand Prix, Montana, Montana SV6, Pursuit, Sunfire, Vibe, Wave, and their respective logos, emblems, slogans and vehicle model names and body designs; and other marks such as Delco, SMARTLEASE, Solar-Ray, StabiliTrak, the TOTAL Warranty and Versatrak are trademarks of General Motors Corporation and/or General Motors of Canada Limited, its subsidiaries, affiliates or licensors.

GMAC is a registered trademark of the General Motors Acceptance Corporation.

OnStar, the OnStar logo and the OnStar button are registered trademarks of the OnStar Corporation.

PASS-Key III and TheftLock are registered trademarks of Delphi Automotive Systems.

HomeLink is a registered trademark of the Prince Corporation.

Radio Data System (RDS) is a trademark of the U.S. National Association of Broadcasters.

Copyright

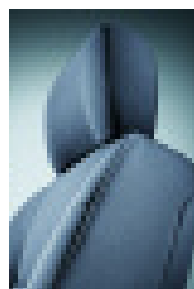
© Copyright 2004 General Motors of Canada Limited. All Rights Reserved. All text, images, graphics, and other materials in this Montana SV6 brochure are subject to the copyright and other intellectual property rights of General Motors Corporation and/or General Motors of Canada Limited. These materials may not be reproduced, distributed or modified without the express written permission of General Motors Corporation and/or General Motors of Canada Limited.

Printed in Canada, December 2004.

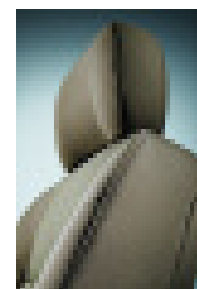
FABRICS.

EXTERIOR/INTERIOR COLOUR COMPATIBILITY

Exterior	Interior	Gray	Cashmere
15 – Sedona Beige Metallic			•
25 – Dark Blue Metallic		•	•
38 – Emerald Green Metallic		•	•
46 – Stealth Gray Metallic		•	•
50 – Summit White		•	•
63 – Sport Red Metallic		•	•
67 – Liquid Silver Metallic		•	•
76 – Dark Bronzemist Metallic			•



Montana SV6
Cloth
Gray



Montana SV6
Cloth
Cashmere



Montana SV6
Leather
Gray



Montana SV6
Leather
Cashmere

EXTERIOR COLOURS.

Colours may not be exactly as illustrated due to restrictions of the printing process. Please see your sales consultant for specific colour and model availability.



67
Liquid Silver
Metallic

63
Sport Red
Metallic

50
Summit White

15
Sedona Beige
Metallic

25
Dark Blue
Metallic

76
Dark Bronzest
Metallic

46
Stealth Gray
Metallic

38
Emerald Green
Metallic

PONTIAC MONTANA SV6 BUILT FOR DRIVERS

AZTEK BONNEVILLE GRAND AM GRAND PRIX G6 MONTANA MONTANA SV6 PURSUIT SUNFIRE VIBE WAVE

HOW DO YOU DESIGN AND BUILD VEHICLES to respond precisely and instantaneously to driver input? With a rigorous and scientific approach to the engineering of every vehicle system and component. That is what separates the Pontiac family of vehicles from everything else on the road. Built to strengthen the connection between drivers and their vehicles. Pontiac. Built for Drivers.

COMMITMENT

Expect nothing less than a 100% commitment. You can feel confident that you're choosing a real driver's car if it bears the Pontiac name. You can also count on your Montana SV6 to continue to exceed your expectations, not just in the way it handles on the road, but also through a comprehensive series of support programs. Some make it easier to purchase or lease a Pontiac Montana SV6. Others help protect you and your vehicle down the road. A powerful example of the level of protection you can expect is the GM TOTAL™ Warranty. It's so thorough it covers your vehicle – from the roof right down to the tires. So when you drive off the lot of your Pontiac dealership, you can do so with total confidence. Peace of mind is knowing that your vehicle is built for the long haul, and is backed by a comprehensive warranty.

THE GM TOTAL™ Warranty:¹

The GM TOTAL™ Warranty is your promise of total warranty protection. It covers every new Pontiac Montana SV6 for 3 years or 60,000 km.* Complete vehicle repairs are covered,** including parts and labour, with no deductible. The warranty includes:

- 3-year/60,000 km* complete vehicle repair coverage
- 6-year/160,000 km* corrosion perforation coverage
- 8-year/130,000 km* coverage on catalytic converters and powertrain control modules (PCMs).

*Whichever comes first.

**To correct any defects in material or workmanship occurring during the warranty period. Regular maintenance is not included, nor is excessive wear and tear caused by reckless or negligent driving.

EXTENDED POWERTRAIN LIMITED WARRANTY:¹

Every Pontiac Montana SV6 is also covered by a special Powertrain Component Warranty with no deductible for 5 years or 100,000 km.* So you can count on your Pontiac Montana SV6 for much more than its styling and engineering – today, and down the road.

*Whichever comes first.

OTHER OWNERSHIP PRIVILEGES AND PROGRAMS:¹

- **Roadside Assistance** – 24/7 service via toll-free number during your warranty period, anywhere in Canada or the United States
- **Courtesy Transportation** – may be offered during warranty period
- **GM Protection Plan (GMPP)** – the only extended service contract backed by the resources and commitment of General Motors; GMPP may be purchased at the time of your sale or lease, or subsequently
- **GM Mobility Program** – you may be eligible for reimbursement of up to \$1000 (taxes included) for adaptive equipment for your GM vehicle
- **GM Accessories** – personalize your vehicle with GM Accessories, specifically engineered for your new GM vehicle
- **GM Goodwrench Service** – with GM-certified technicians and GM-approved parts, nobody knows your GM vehicle better.

TO HELP YOU PURCHASE OR LEASE A NEW VEHICLE:

- **GMAC Financing** – on-the-spot financing at your GM dealership^{††}
- **GMAC SMARTLEASE** – a smart alternative to traditional financing^{††}
- **GM Graduate Program** – recent graduates may qualify for up to \$1000 (taxes included) off any new GM vehicle[†]
- **The GM Card** – eligible cardholders may be able to redeem up to \$3500 in GM Card® Earnings toward the total purchase price or lease down payment on selected vehicles. For more information on The GM Card please call 1-800-461-3279.[†]

INFORMATION RESOURCES:

You can find more information about these programs from your GM dealer, or at these information centres:

- The GM Web site at gmcanada.com
- The GM Customer Communication Marketing Centre at 1-800-GM-DRIVE (1-800-463-7483 or 1-800-263-3830 for TDD users) for information about any GM product or service, including The GM Card and the GM Mobility Program
- For information about GMAC visit the GM Web site or call 1-800-616-4622.

¹Conditions and limitations apply.

^{††}Subject to eligibility.

