

2006 **LUCERNE**





2006 BUICK LUCERNE 

EXPANDING THE DEFINITION OF THE BUICK SEDAN.

Its sleek lines and taut form are a revelation for a premium full-size sedan. At the same time, its character is undeniably Buick – giving fresh expression to the quality and sophistication that sets Buick apart. The all-new Lucerne also represents a substantial technological advance, heralding Buick's return to V8-powered sedans with the CXL V8 and CXS. The CXS also incorporates leading-edge Magnetic Ride Control – the fastest reacting suspension system in the world. Clearly the new Lucerne is so much more than a finely crafted automobile – it is a premium sedan with an approach to engineering that is as uncompromised as it is refined. The automobile that expands the definition of Buick luxury: The all-new 2006 Buick Lucerne.

Every Buick is built with exquisite care to exceptionally high standards, achieving a level of quality that ranks Buick among the elite – a standard you can see for yourself in the maximum .5 mm gap between surfaces on the control section of the instrument panel. And a standard that has earned the J.D. Power and Associates Bronze Plant Quality Award for the facility where Lucerne is crafted.* Every Buick is also equipped with the enhanced safety and security of OnStar, and employs QuietTuning for a supremely quiet ride. And now, for 2006, every Buick is backed by a new comprehensive four-year/80,000 km New Vehicle Limited Warranty** that solidifies Buick's position as one of the world's premium automakers.

*In the J.D. Power and Associates 2005 U.S. Initial Quality StudySM, General Motors Hamtramck, MI plant received the Bronze Plant Quality Award in North/South America among plants producing vehicles for the U.S. market. Study based on 62,251 U.S. consumer responses indicating owner reported problems during the first 90 days of ownership. www.jdpower.com

**Whichever comes first.



For more information about Lucerne visit our Web site at lucerne.gmcanada.com

GIVES THE FULL-SIZE SEDAN A WHOLE NEW PROFILE.

It's the premium full-size sedan that is distinguished by its elegant shape and the sporty styling details provided by the portholes on the front fenders, as well as the 18-inch aluminum wheels on CXS.





☞ LUCERNE CX, CXL V6, CXL V8, CXL V8, CXL V8 ☞



Lucerne CXL V6, shown in Black Onyx with available equipment.

Lucerne's polycarbonate headlight pod not only provides effective illumination – it also adds an integrated styling detail to Buick's trademark front end.



The stylish portholes highlight Lucerne's sporty distinctive personality. One porthole is included for each cylinder – three on each side of CX and CXL V6 – four on CXL V8 and CXS.

LUCERNE CX, CXL V6, CXL V8, CXS 

ONE NEW NAMEPLATE. FOUR DISTINCTIVE PERSONALITIES.

There are many different aspects to Lucerne – its elegant style, abundant power, technological sophistication, as well as its spacious and well-crafted cabin. Those characteristics are delivered with individual expression in Lucerne CX, CXL V6, CXL V8 and CXS.

Every Lucerne model is extraordinarily well equipped, beginning with the V6-powered CX that includes many premium standard features that add to your peace of mind, including traction control, a tire pressure monitoring system and a first-in-class dual-depth front passenger air bag system.

The CXL provides an exceptionally high level of comfort, tailoring the cabin temperature through the dual-zone climate controls and the support through the driver and front-passenger power six-way seat adjusters.

The CXL V8 enhances both power and control with the 275 horsepower 4.6L Northstar V8 engine and the precise feel provided by Magnasteer variable-assist power steering.

The standard-bearer as the pre-eminent sedan in the Buick lineup is reserved for Lucerne CXS, with its advanced Magnetic Ride Control and StabiliTrak technology, in addition to its comprehensive luxury, highlighted by heated power eight-way leather-appointed front seats.

Four different models – each imbued with QuietTuning and the exemplary fit and finish that define all Buicks.

INTERIOR



The image shows the interior of a car, focusing on the front and rear seats. The seats are upholstered in black leather with visible stitching. The door panels and dashboard area feature a dark wood trim. The overall lighting is dramatic, highlighting the textures of the leather and wood.


**INSIDE LUCERNE –
RIGHT WHERE
YOU’LL WANT TO BE.**



METICULOUS ATTENTION TO DETAIL.



Walnut Burlwood detail.

DETAILS 

THE GROWN-UP VERSION OF QUIET TIME.

Lucerne's cabin is an exquisitely detailed environment, revealing the highest quality standards. That begins with a scarcity of noise – the product of its Buick-exclusive QuietTuning. In fact, the goal was to build the quietest Buick ever. To achieve that goal, Lucerne employs 26 different QuietTuning technologies and tactics. The resulting feeling of tranquility is further enhanced by the cabin's premium materials, such as the sumptuous leather-appointed seating with its distinctive French seams. Return to a very special place – every time you take your seat inside Lucerne.



Canada has the extreme seasons – Lucerne offers available heated and cooled front seats to help make them more comfortable.

Warm Chestnut wood tone detail.



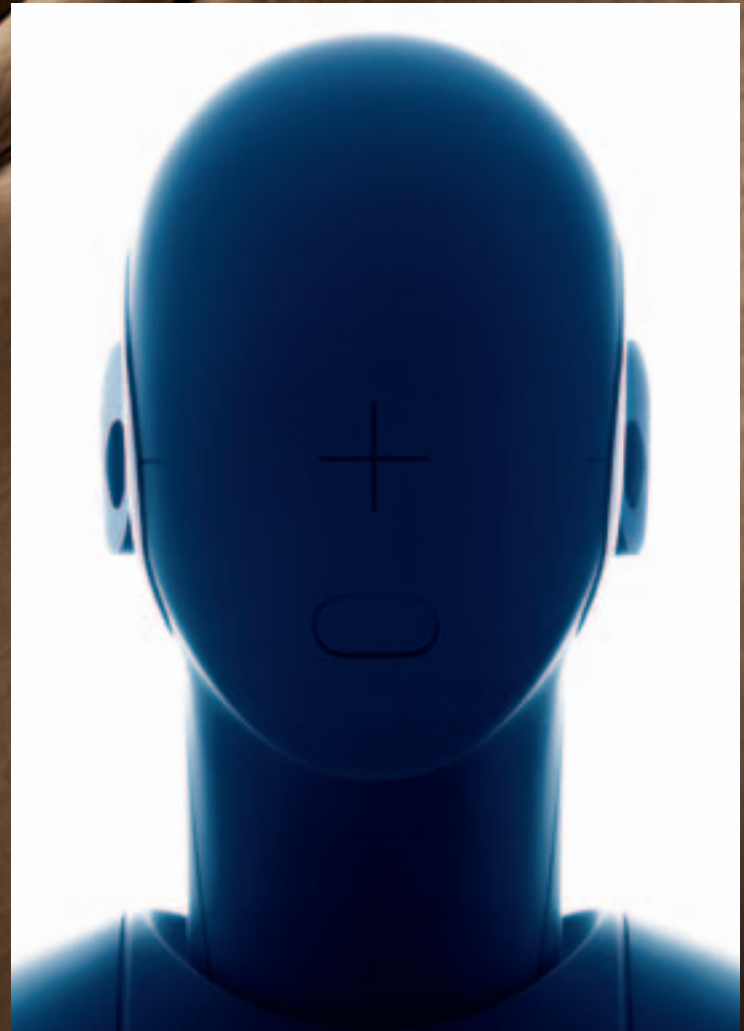
The available DVD navigation system covers millions of kilometres of roads in both Canada and U.S.* The first two annual DVD updates are included.

*Interim availability. At time of printing, detailed map coverage is available for most major areas of the United States and for certain metropolitan areas of Canada (Vancouver, Calgary, Edmonton, Winnipeg, Windsor, Toronto, London, Ottawa, Montreal, Quebec City and Halifax). Coverage is significantly limited outside these areas.

The French seam detailing on the leather-appointed seating is something you may expect to see on a fine piece of leather-upholstered furniture.



The nine-speaker premium 280 watt Harman Kardon sound system is standard on CXS. This sound system has been specifically tuned and equalized for Lucerne's cabin.



The Aachen Head sound measurement device was used to record and analyze the noise entering Lucerne's cabin. QuietTuning measures were employed to help minimize those noises and vibrations. Lucerne's QuietTuning features include everything from the tire composition and tread pattern and a double-isolated powertrain mounting system to various acoustic sealers, barriers and shields that block the path of noise. Even the laminated glass and steel are engineered for their acoustical properties.

PERFORMANCE 

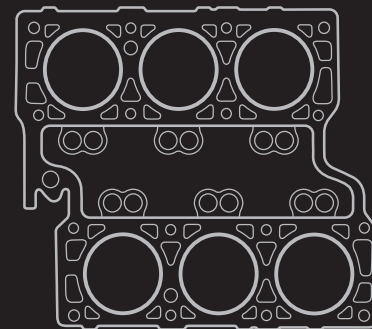
V8 POWER IS BACK – IN A BIG WAY.

 PERFORMANCE 



Lucerne CXS, shown in Platinum Metallic.

Lucerne marks the return of V8 power to a Buick sedan for the first time in a decade. The 275 horsepower 4.6L Northstar V8 is an all-aluminum engine with 32 valves and dual overhead camshafts. The Northstar V8 is standard on CXL V8 and CXS. The award-winning 197 horsepower 3800 Series III V6 is standard on CX and CXL V6. Both engines feature Electronic Throttle Control for enhanced responsiveness and efficiency. And both engines provide the refined and effortless power you demand in a premium automobile.



The 3.8L 3800 Series III V6 engine delivers 197 hp at 5200 rpm and 227 lb.-ft. of torque at 3800 rpm.



The 4.6L Northstar V8 engine produces 275 hp at 5600 rpm, and 292 lb.-ft. of torque at 4000 rpm.



Lucerne's four-speed automatic transmission employs a gated shifter that enables you to manually select gears.

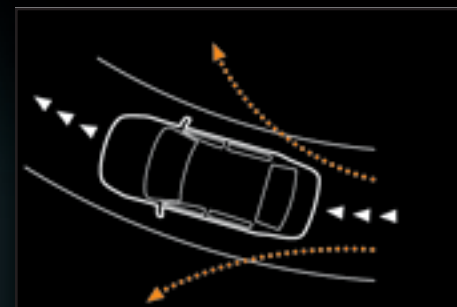
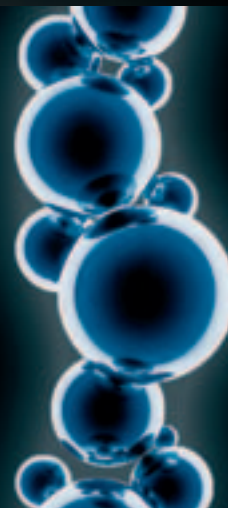
TECHNOLOGY 

THE RIDE IS AS ASSURED AS IT IS SMOOTH.

Buicks have always been known for their ultra-smooth ride. Lucerne bolsters that reputation with its standard four-wheel independent suspension, complemented in CXS by standard Magnetic Ride Control. CXS models also feature StabiliTrak with a brake assist feature that detects emergency braking and optimizes braking at each wheel. Further enhancing Lucerne's braking performance are standard four-wheel discs with a four-wheel anti-lock braking system. Together, this technology helps you make an unprecedented connection with the road, while enjoying Buick's hallmark smooth ride.



Magnetic Ride Control technology employs sensors that read the road 1000 times a second. The system incorporates magneto-rheological fluid to automatically adjust the damping of each individual shock absorber for optimal ride characteristics. Magnetic Ride Control is standard on CXS.



StabiliTrak continuously monitors steering angle, wheel speeds, brake pressure and lateral acceleration. If the system detects a lateral skid, StabiliTrak intervenes by adjusting brake pressure and engine power to help return Lucerne to its intended driving line. StabiliTrak is standard on CXS and includes a brake assist feature.

When the Rainsense moisture-sensing windshield wiper system's infrared sensor detects water or mist on the windshield, it automatically activates the wipers to clear the windshield. Rainsense wipers are standard on CXL V6, CXL V8 and CXS.



ANOTHER ASPECT OF BUICK QUALITY.

You can find numerous examples of the way Buick safety and security go far beyond the expected. You can see it in the fact that all Lucerne include no fewer than six air bags* – and a first-in-class dual-depth front-passenger air bag system that deploys either a smaller or larger air bag, based on safety belt usage, occupant seating position and the severity of the impact. You can also see Buick ingenuity in a feature as unique as the available heated windshield washer system that heats washer fluid up to 80°C (176°F) in just 40 seconds. Just think what that can do to a stubborn icy windshield buildup in the depths of a Canadian winter. Our engineers didn't just think about it, they made it part of the all-new Lucerne.



The available remote vehicle start feature allows you to start your Lucerne from up to 60 m (200 ft.) away, enabling you to warm or cool the interior before entering.



When Lucerne is in Reverse at low speeds, the available ultrasonic rear parking assist will detect an object over 25 cm (10 in.) in height and will then activate audio and LED warnings.



Dual-depth frontal air bags, driver and front passenger-side thorax and head curtain side-impact air bags for front and rear outboard seat occupants are standard.



The auto-dimming driver's exterior rear-view mirror on CXS significantly reduces headlight glare. Both exterior rear-view mirrors are heated and include integrated turn signal indicators.

*A NOTE ON CHILD SAFETY: Always use safety belts and proper child restraints, even in vehicles equipped with air bags. Even with the Passenger Sensing System, children are safer when properly secured in a rear seat. Never place a rear-facing infant restraint in the front seat of any vehicle equipped with an active frontal air bag. Refer to the vehicle Owner's Manual and child safety seat instructions for more information.

A FITTING ADDITION TO YOUR LUCERNE.



Accessories

Lucerne is designed and manufactured with you in mind. Yet, you can make your Lucerne truly unique – a personal statement of your style and sensibilities – through the addition of selected GM Accessories. They are the only accessories that are integrated into the process of designing your vehicle, ensuring excellent fit, finish and functionality. And only GM Accessories are backed by Buick's 4-year/80,000 km New Vehicle Limited Warranty.* They can also be included in your new-vehicle lease or finance agreement through GMAC. Ask your dealer for a complete list of the GM Accessories available for Lucerne, or visit gmcanada.com

*Whichever comes first, when permanently installed by the dealer at the time you purchase or lease your new vehicle.



ACCESSORIES/ONSTAR 540



GM Accessories available for Lucerne include:

- Rear spoiler
- Chrome-plated exhaust tip
- Chrome-plated wheels
- Genuine wood shifter
- Genuine wood and leather steering wheel
- Splash guards
- Sunroof and side-window deflectors
- Cargo convenience net.



Every Buick is defined by a host of complementary qualities. Among them is the unparalleled combination of safety, security, and convenience provided by OnStar.* OnStar uses advanced communications technology to enhance your peace of mind whenever you're in your Lucerne. All it takes is a single push of the blue OnStar button usually located on the interior rear-view mirror, in the overhead console, or near the radio display – the button connects you with one of our specially trained OnStar Advisors. They are standing by, ready to provide support 24 hours a day, 365 days a year.

What can OnStar Advisors do for you? They can provide a wealth of information and perform a variety of services, including a remote diagnostic check of your vehicle's engine and electrical components. In an emergency, an Advisor will attempt to locate your vehicle, find out what assistance you need, and notify nearby emergency service providers. And if air bags are deployed in your vehicle, an Advisor will contact you to determine if you are in need of assistance.

Another convenient feature is OnStar Hands-Free Calling, a hands-free, voice-activated wireless technology integrated into your vehicle. It's there in case your hand-held phone is lost, forgotten or has a low battery. Even better, there are no additional monthly fees, or additional long distance and roaming charges. And as a new customer, you will receive 30 complimentary minutes good for two months after activation.

Now you can enjoy the peace of mind that comes with knowing you're doing all you can to help keep you, your family, and your vehicle safe. Just ask the almost 150,000 people who have become OnStar subscribers in Canada. How hard does OnStar work for you? The facts speak for themselves: every month in Canada OnStar Advisors handle an average of 9100 routing calls, 2500 emergency calls, 2600 door unlocks, and 625 Roadside Assistance dispatches.

OnStar offers two different service plans, allowing you to select the services that are most convenient for you. The Safe & Sound Plan is included for the first year on Lucerne. In addition, the available Directions & Connections Plan offers all of the safety and security services included in the Safe & Sound Plan, plus you'll have access to driving directions and information and convenience services and RideAssist. See your dealer for more information on plans and services.

*OnStar services require vehicle electrical system (including battery), wireless service, and GPS satellite signals to be available and operating for features to function properly. Not all OnStar features are available on all vehicles. OnStar Hands-Free Calling requires a Hands-Free enabled vehicle, existing OnStar service contract, and prepaid calling minutes, and is not available in Alaska and some other markets. Calls may be made to the U.S. and Canada only. OnStar voice recognition system may not work with some voices. OnStar acts as a link to existing emergency service providers. Subscription Service Agreement required. Due to the transition of the wireless industry from analogue to digital technology, as of January 1, 2008, OnStar plans to offer service only through equipment that operates on the digital network, which may require the purchase of a system upgrade for eligible vehicles. Call 1.888.4.ONSTAR (1.888.466.7827), TTY 1.877.248.2080 or visit onstar.ca for OnStar's Terms & Conditions, Privacy Policy, and system limitations and details.

COMMITMENT:

We're committed to engineering and manufacturing Buick Lucerne so that it is an absolute pleasure to drive. And that's just the beginning. We're also committed to making the ownership experience just as responsive to your specific needs. You'll find that our comprehensive support programs make it easier to purchase or lease a Buick. They also help to protect you and your vehicle down the road. A powerful example of the level of protection you can expect is the Buick New Vehicle Limited Warranty. It's so thorough it covers your vehicle from the roof right down to the tires. So when you drive off the lot of your Buick dealership, you can do so with total confidence. Peace of mind is knowing that your vehicle is built for the long haul, and is backed by a comprehensive warranty.

THE NEW VEHICLE LIMITED WARRANTY:†

The Buick New Vehicle Limited Warranty is your promise of total warranty protection. It covers every new Buick Lucerne for four years or 80,000 km.* Complete vehicle repairs are covered,** including parts and labour, with no deductible. The warranty includes:

- 4-year/80,000 km* complete vehicle repair coverage
- 6-year/unlimited km corrosion perforation coverage
- 8-year/130,000 km* coverage on catalytic converters and powertrain control modules (PCMs)

*Whichever comes first.

**To correct any defects in material or workmanship occurring during the warranty period.

Regular maintenance is not included, nor is excessive wear and tear caused by reckless or negligent driving.

OTHER OWNERSHIP PRIVILEGES AND PROGRAMS:†

- **Roadside Assistance** – 24/7 service via toll-free number during your warranty period, anywhere in Canada or the United States
- **Courtesy Transportation** – may be offered during the warranty period
- **GM Protection Plan (GMPP)** – the only extended services contract backed by the resources and commitment of General Motors, GMPP may be purchased at the time of your sale or lease, or subsequently
- **GM Mobility Program** – you may be eligible for reimbursement of up to \$1000 (taxes included) for adaptive equipment for your GM vehicle
- **GM Accessories** – personalize your vehicle with GM Accessories, specifically engineered for your new GM vehicle
- **GM Goodwrench Service** – with GM-certified technicians and GM-approved parts, nobody knows your GM vehicle better.

TO HELP YOU PURCHASE OR LEASE A NEW VEHICLE:

- **GMAC Financing** – on the spot financing at your GM dealership††
- **GMAC SMARTLEASE** – a smart alternative to traditional financing††
- **The GM Card** – eligible cardholders may be able to redeem up to \$3500 on GM Card® Earnings toward the total purchase price or lease down payment on selected vehicles. For more information on The GM Card please call 1-800-461-3279.†

INFORMATION RESOURCES:

You can find more information about these programs from your GM dealer, or at these information centres:

- The GM Web site at gmcanada.com
- The GM Customer Communication Marketing Centre at 1-800-GM-DRIVE (1-800-463-7483 or 1-800-263-3830 for TDD users) – for information about any GM product or service, including The GM Card and the GM Mobility Program
- For information about GMAC, visit gmcanada.com or call 1-800-616-4622.

†Conditions and limitations apply.

††Subject to eligibility.

LUCERNE STANDARD & OPTIONAL FEATURES

	CX	CXL V6	CXL V8	CXS
SAFETY AND SECURITY				
Air bags – dual-stage, dual-depth, driver and front passenger, frontal with Passenger Sensing System	S	S	S	S
Air bags – driver and front-passenger, seat-mounted side-impact	S	S	S	S
Air bags – front to rear, side head curtain	S	S	S	S
Brake/transmission shift interlock	S	S	S	S
Door locks – automatic power, programmable with lock-out protection and delayed locking features	S	S	S	S
Door locks – rear doors, child-security	S	S	S	S
Headlights – Daytime Running Lights with automatic light control (includes Twilight Sentinel with delay feature)	S	S	S	S
Keyless entry system – remote, programmable	S	S	S	S
Keyless entry system – extended range	0	0	0	0
OnStar In-Vehicle Communications and Assistance Service – includes one-year Safe & Sound Plan	S	S	S	S
Safety restraints – LATCH (Lower Anchors and top Tethers for Children), rear seats	S	S	S	S
Theft-deterrent system – PASS-Key III+ with immobilizer	S	S	S	S
Traction control – electronic, full function, all-speed	S	S	S	S
Trunk – internal manual trunk entrapment release handle	S	S	S	S

	CX	CXL V6	CXL V8	CXS
MECHANICAL				
Battery – with run-down protection	S	S	S	S
Brakes – power, 4-wheel disc	S	S	S	S
Brakes – 4-wheel anti-lock braking system (ABS)	S	S	S	S
Drive – front-wheel	S	S	S	S
Engine – 3.8L 3800 Series III V6 with SFI Horsepower – 197 @ 5200 rpm, Torque – 227 lb.-ft. @ 3800 rpm	S	S	–	–
Engine – 4.6L Northstar V8 with SFI Horsepower – 275 @ 5600 rpm, Torque – 292 lb.-ft. @ 4000 rpm	–	–	S	S
Engine block heater	S	S	S	S
Exhaust system – aluminized stainless steel	S	S	–	–
Exhaust system – aluminized stainless steel with dual outlets	–	–	S	–
Exhaust system – aluminized stainless steel with chrome dual outlets	–	–	–	S
StabiliTrak – vehicle dynamic control, integrated chassis control system	–	–	0 ¹	S
Steering – power, rack-and-pinion	S	S	–	–
Steering – power, Magnasteer magnetic speed-sensitive variable-assist, rack-and-pinion	–	–	S	S
Suspension – 4-wheel independent, Premium Ride	S	–	–	–
Suspension – 4-wheel independent, Firm Ride	–	S	S	–
Suspension – 4-wheel independent, Sport-tuned with Magnetic Ride Control	–	–	–	S
Transmission – 4-speed automatic with overdrive	S	S	S	S

1 – Included with Driver Confidence Package.

	CX	CXL V6	CXL V8	CXS
EXTERIOR				
Antenna – rear-window integrated	S	S	S	S
Body panels – 2-sided galvanized steel (except roof)	S	S	S	S
Fog lights	–	–	–	S
Glass – Solar-Ray, tinted	S	S	S	S
Lights – front cornering	–	S	S	S
Mirrors – folding, power remote control	S	–	–	–
Mirrors – folding, power remote control, heated with driver's side electrochromic auto-dimming feature	0 ²	S	S	–
Mirrors – folding, power remote control, heated with driver's side electrochromic auto-dimming feature and integral turn signals in mirror glass	–	–	–	S
Mouldings – bodyside, body-colour with chrome inserts and body-colour rockers	S	S	S	S
Sunroof – power, sliding glass panel with express-open feature	0 ²	0	0	0

2 Included with Comfort and Convenience Package.

3 Requires Comfort and Convenience Package.

	CX	CXL V6	CXL V8	CXS
EXTERIOR (continued)				
Tires – P225/60R16 all-season	S	–	–	–
Tires – P235/55R17 all-season	–	S	S	–
Tires – P245/50R18 all-season	–	–	–	S
Wheels – 16" x 6.5" aluminum (A) ⁴	S	–	–	–
Wheels – 17" x 7" aluminum, pearl-nickel finish (B) ⁴	–	S	S	–
Wheels – 17" x 7" aluminum, chrome-plated finish (C) ⁴	–	0	0	–
Wheels – 18" x 7" aluminum, pearl-nickel finish (D) ⁴	–	–	–	S
Wheels – 18" x 7" aluminum, chrome-plated finish (E) ⁴	–	–	–	0
Windshield wipers – flat-blade, 2-speed with variable delay (intermittent)	S	–	–	–
Windshield wipers – flat-blade, Rainsense with automatic variable delay	0 ²	S	S	S
Comfort & Convenience Package – includes Rainsense wipers with automatic variable delay, heated exterior rear-view mirrors, electrochromic auto-dimming exterior driver's rear-view mirror, driver and front-passenger illuminated vanity visor mirrors, interior electrochromic auto-dimming rear-view mirror and universal home remote 3-channel transmitter	0	–	–	–
Driver Confidence Package – includes ultrasonic rear parking assist with audible and visible warning system, audible/visible content theft alarm, extended range keyless entry system and remote vehicle starter system	0	0	0 ⁵	0

2 Included with Comfort and Convenience Package.

4 Wheels shown on page 22.

5 StabiliTrak vehicle stability enhancement system included.

	CX	CXL V6	CXL V8	CXS
INTERIOR				
Air conditioning – manual, single zone	S	–	–	–
Air conditioning – automatic, dual zone, includes rear seat outlets	–	S	S	S
Armrest – rear-seat, centre with pass-through	S	S	S	S
Console – front floor with armrest, dual cupholders and storage	S	S	S	S
Cruise control – electronic, steering wheel-mounted with resume, coast and decelerate/accelerate features	S	S	S	S
Defogger – electric rear-window	S	S	S	S
Floor mats – front and rear, carpeted	S	S	S	S
Instrumentation – analogue cluster with Driver Information Centre (includes speedometer, tachometer, coolant temperature and fuel gauge, GM Oil Life System, tire pressure monitoring system, low fuel and low windshield washer fluid level indicators) ⁶	S	S	S	S
Lighting – delayed entry/exit, theatre dimming, instrument panel courtesy, glovebox, front map, rear courtesy and reading and trunk	S	S	S	S
Mirror – with electrochromic auto-dimming feature	0 ²	S	–	–
Mirror – with electrochromic auto-dimming feature and compass	–	–	S	S
Retained accessory power	S	S	S	S
Steering column – tilt adjustable	S	S	S	S
Steering wheel – 4-spoke with audio and cruise control switches	S	–	–	–
Steering wheel – 4-spoke, leather-wrapped with audio and cruise control switches	–	S	S	–
Steering wheel – 4-spoke, perforated leather-wrapped with audio and cruise control switches	–	–	–	S
Sunshades – LH and RH padded with extensions; vanity mirrors	S	–	–	–
Sunshades – LH and RH padded with extensions; illuminated vanity mirrors	0 ²	S	S	S
Trunk – release, power remote	S	S	S	S
Universal home remote – 3-channel programmable transmitter	0 ²	S	S	S
Windows – power, driver's express-down feature	S	S	S	S
All-weather Ultimate Package – includes driver and front-passenger heated and cooled perforated leather-appointed seating and heated washer fluid	–	0 ⁷	0 ⁷	0
Luxury Package – includes heated driver and front-passenger seats, 8-way power driver and front-passenger seat adjusters, 4-way power lumbar adjusters and Memory Package	–	0	0	–
Memory Package – automatically recalls settings for 2 drivers based on their individual remote access key fob: the recall function remembers the position of the driver's seat, exit seating position, exterior rear-view mirror preferences, passenger tilt-down parallel park feature, audio system and climate control settings	–	0 ⁸	0 ⁸	S

2 Included with Comfort and Convenience Package.

6 Includes compass in Driver Information Centre on CX and CXL V6, compass is included in interior rear-view mirror on CXL V8 and CXS.

7 Requires Luxury Package.

8 Included with Luxury Package.

SEATS

	CX	CXL V6	CXL V8	CXS
Cloth front bucket seats – with centre floor console	S	–	–	–
Leather-appointed front bucket seats – with centre floor console	–	S	S	S ⁹
40/20/40 divided cloth bench front seat (6-passenger)	0	–	–	–
40/20/40 divided heated leather-appointed bench front seat (6-passenger)	–	0	0	–
Power 6-way driver adjuster	S	S	S	–
Power 6-way front-passenger adjuster	–	S	S	–
Power 8-way driver and front-passenger adjusters – with 4-way power lumbar adjusters	–	0 ⁸	0 ⁸	S
Heated, driver and front-passenger	–	0 ⁸	0 ⁸	S

8 Included with Luxury Package.

9 Includes perforated leather – appointed seating.

SOUND SYSTEMS

	CX	CXL V6	CXL V8	CXS
All Lucerne sound systems include an electronically tuned Delco AM/FM stereo with seek/scan, auxiliary input jack, Theftlock and digital clock				
AM/FM stereo with CD player	S	–	–	–
AM/FM stereo with CD player and MP3 playback, speed-compensated volume control, auto tone control and Radio Data System (RDS)	0	S	S	S
AM/FM stereo with 6-disc in-dash CD changer and MP3 playback, speed-compensated volume control, auto tone control and Radio Data System (RDS)	0	0	0	0
6-speaker sound system	S	S	S	–
9-speaker 280-watt Harman Kardon premium sound system	0 ¹⁰	0 ¹⁰	0 ¹⁰	S
XM Satellite Radio (activation and service fees extra)	0 ¹⁰	0 ¹⁰	0 ¹⁰	S
Entertainment Package-includes 9-speaker 280-watt Harman Kardon premium sound system and XM Satellite Radio	0	0	0	S

10 Requires Entertainment Package.

A word about this brochure

Some of the equipment shown or described throughout this brochure may be available at extra cost. We have tried to make this brochure comprehensive and factual. We reserve the right, however, to make changes at any time, without notice, in prices, colours, materials, equipment, specifications, models and availability. Specifications, dimensions, measurements, ratings and other numbers in this brochure and other printed materials provided at the dealership or affixed to vehicles are approximates based upon design and engineering drawings and prototypes and laboratory tests. Your vehicle may differ due to variations in manufacture and equipment. Since some information may have been adapted since the time of the printing, please check with your Buick dealer for complete details. General Motors of Canada Limited reserves the right to lengthen or shorten the model year for any product, for any reason, or to start and end model years at different times.

Privacy statement

At General Motors of Canada Limited (“GM Canada”) we respect your privacy and value our relationship with you. Your personal information will be protected, will never be sold, and will be used only by GM Canada, our affiliates dealers/retailers, and service suppliers (only to provide services). If you wish to be removed from GM Canada marketing communications; would like to limit only certain marketing communications from us; would like a listing of our specific uses or further information about those with whom your information is shared; or for further information about our Privacy Policy and practices, please contact us at 1-800-GM-DRIVE (1-800-463-7483) or through our Web site at gmcanada.com

A word about assembly

Buicks are equipped with engines and components produced and assembled by different operating units of General Motors, its subsidiaries and suppliers and these engines and components may change or be obtained from different sources from time to time. All such engines and components are approved for use in Buicks. Certain equipment ordered may be unavailable at the time of assembly and we suggest that you verify that your vehicle includes the equipment you ordered, or if there are changes, that they are acceptable to you.

Trademarks

The marks appearing in this Buick Lucerne brochure including, but not limited to: General Motors, GM, the GM Canada emblem, the GM Canada Web site address, the GM Accessories logo, Buick, the Buick emblem, Allure, Lucerne, Rainier, Rendezvous, Terraza, and their respective logos, emblems, slogans and vehicle model names and body designs; and other marks such as Delco, Magnasteer, Northstar, Rainsense, QuietTuning, SMARTLEASE, Solar-Ray, StabiliTrak and Twilight Sentinel are trademarks of General Motors Corporation and/or General Motors of Canada Limited, its subsidiaries, affiliates or licensors.

GMAC is a registered trademark of the General Motors Acceptance Corporation.

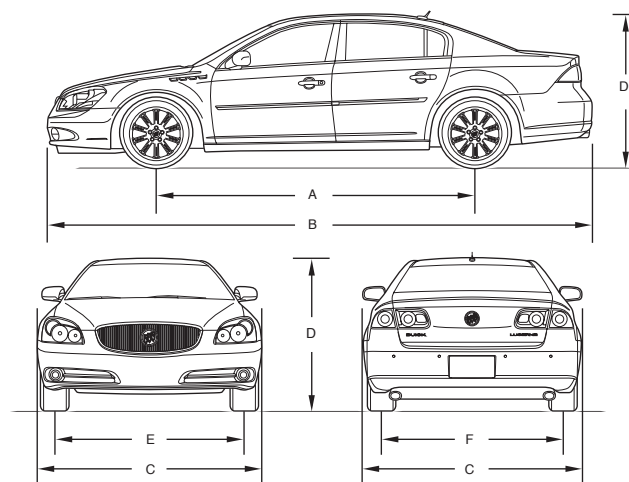
OnStar, the OnStar logo and the OnStar button are registered trademarks of the OnStar Corporation.

PASS-Key III+, Magnasteer and TheftLock are registered trademarks of Delphi Automotive Systems.

The XM name and related logos are registered trademarks of XM Satellite Radio Inc.

Harman Kardon is a registered trademark of Harman International Industries Incorporated.

DIMENSIONS



EXTERIOR, MM (IN.)

Wheelbase (A)	2936 (115.6)
Length (B)	5161 (203.2)
Width (C)	1874 (73.8)
Height (D)	1473 (58.0)
Front tread (E), 16" and 17" wheels	1601 (63.0)
Front tread (E), 18" wheels	1591 (62.6)
Rear tread (F) 16" and 17" wheels	1587 (62.5)
Rear tread (F) 18" wheels	1577 (62.1)

INTERIOR, MM (IN.) FRONT/REAR

Headroom	1004/957 (39.5/37.7)
Legroom	1079/1051 (42.5/41.4)
Shoulder room	1473/1453 (58.0/57.2)
Hip room	1424/1445 (56.1/56.9)

CAPACITIES/WEIGHT

Trunk, L (cu. ft.)	481 (17.0)
Fuel tank, L (imp. gal.)	70 (15.0)
Curb weight (est.), kg (lb.) – CX	1707 (3764)
– CXL V6	1800 (3969)
– CXL V8	1800 (3969)
– CXS	1820 (4013)

TOWING

3.8L 3800 Series III V6 2.86 final drive ratio; 454 kg (1000) maximum gross trailer weight*

4.6L Northstar V8 VVT 3.11 final drive ratio; 454 kg (1000 lb.) maximum gross trailer weight*

*When properly equipped. Includes weight of trailer, cargo, passengers and equipment. All towing recommendations are subject to change. Trailer tongue load should be 10% of the maximum trailer weight but should not exceed the load rating specified for that vehicle, engine or hitch combination. See your dealer or refer to the Lucerne Owner's Manual for details.

Copyright

©Copyright 2005 General Motors of Canada Limited. All Rights Reserved. All text, images, graphics, and other materials in this Buick Lucerne brochure are subject to the copyright and other intellectual property rights of General Motors Corporation and/or General Motors of Canada Limited. These materials may not be reproduced, distributed or modified without the express written permission of General Motors Corporation and/or General Motors of Canada Limited.

Printed in Canada, October 2005.

WHEELS



A – 16" aluminum wheel



B – 17" pearl-nickel finish aluminum wheel



C – 17" chrome-plated finish aluminum wheel

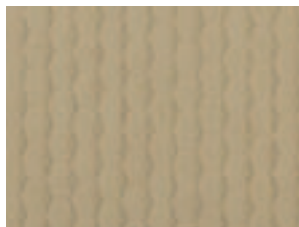


D – 18" pearl-nickel finish aluminum wheel



E – 18" chrome-plated finish aluminum wheel

INTERIOR FABRICS



Cashmere Cloth



Titanium Cloth



Shale Cloth



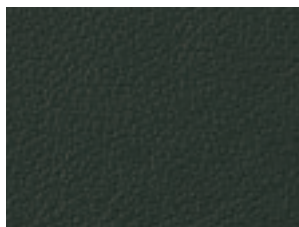
Cashmere Leather



Titanium Leather*



Shale Leather



Ebony Leather**

EXTERIOR/INTERIOR COLOUR COMPATIBILITY

EXTERIOR	INTERIOR			
	Cashmere	Titanium*	Ebony**	Shale
15 – Cashmere Metallic	•		•	•
23 – Sagemist Metallic	•	•	•	
25 – Ming Blue Metallic	•	•	•	•
40 – White Opal	•	•	•	•
41 – Black Onyx	•	•	•	•
49 – Dark Garnet Metallic	•	•	•	
53 – Sandstone Metallic	•		•	
67 – Platinum Metallic		•	•	•
68 – Glacier Blue Metallic	•	•	•	•
86 – Crimson Pearl Tintcoat [†]	•	•	•	
93 – White Gold Flash Tintcoat [†]	•	•	•	•
99 – Sharkskin [†]	•	•	•	

*Not available on CXS.

**Available on CXS only.

[†]Not available on CX. Premium paint available at extra cost.

EXTERIOR COLOURS



15 – Cashmere Metallic



53 – Sandstone Metallic



23 – Sagemist Metallic



67 – Platinum Metallic



25 – Ming Blue Metallic



68 – Glacier Blue Metallic



40 – White Opal



86 – Crimson Pearl Tintcoat†



41 – Black Onyx



93 – White Gold Flash Tintcoat†



49 – Dark Garnet Metallic



99 – Sharkskin†



ALLURE



LUCERNE



RAINIER



RENDEZVOUS



TERRAZA

A STORY ONLY GENERAL MOTORS CAN TELL.

General Motors' commitment to setting the highest standards in quality, safety, innovation, and fuel efficiency are matched by an equally strong commitment to the community.



DID YOU KNOW?

QUALITY: GM plants swept the J.D. Power Initial Quality Study^{SM*} rankings for North and South America: Gold and Silver Plant Quality Awards for the Canadian Oshawa #2 and #1 car plants, in addition to the Bronze Plant Quality Award for the Hamtramck, Michigan plant.

SAFETY: General Motors is the only automotive manufacturer committed to offering a full range of cars, trucks, and SUVs that provide safety protection before, during and after a collision.

GM vehicles are equipped with a range of features and technologies that help drivers

avoid collisions, reduce the risk of injury should a collision prove unavoidable, and help you get the assistance you need after a collision.

INNOVATION: GM is at the forefront of automotive technology with breakthrough features such as OnStar and XM Satellite Radio.

FUEL EFFICIENCY: GM offers more cars than any other automaker in Canada that get better than 7.0 L/100 km in highway driving. GM has also won more EnerGuide fuel-efficiency awards than any other car company.

GM IS COMMITTED TO CANADA

INVESTMENT: GM invests more in Canada than any other car company: The \$2.5 billion Beacon Project represents the largest automotive investment in Canadian history.

EMPLOYMENT: GM directly employs over 20,000 people in Canada – more than any other car company.

DESIGN: GM is the only car company that designs, engineers and builds cars in Canada.

GM IS BEHIND YOU AND YOUR VEHICLE

GM is equally comprehensive in the way it backs its Buick vehicles. All Buick models include:

- 4-year/80,000 km** complete vehicle repair coverage
- 6-year/unlimited km corrosion perforation coverage
- 8-year/130,000 km** coverage on catalytic converters and powertrain control modules (PCMs)
- 4-year/80,000 km** 24-hour Roadside Assistance.

*General Motors Corporation – Oshawa #2 (Ontario – Car) was the highest ranked plant, Oshawa #1 (Ontario) was the second ranked plant and Hamtramck, MI was the third ranked plant in North/South America among plants producing vehicles for the U.S. market in J.D. Power and Associates 2005 U.S. Initial Quality StudySM. Study based on a total of 62,251 U.S. consumer responses indicating owner reported problems during the first 90 days of ownership. www.jdpower.com

**Whichever comes first.



CHEVROLET PONTIAC BUICK GMC
CADILLAC SATURN SAAB HUMMER

gmcanada.com