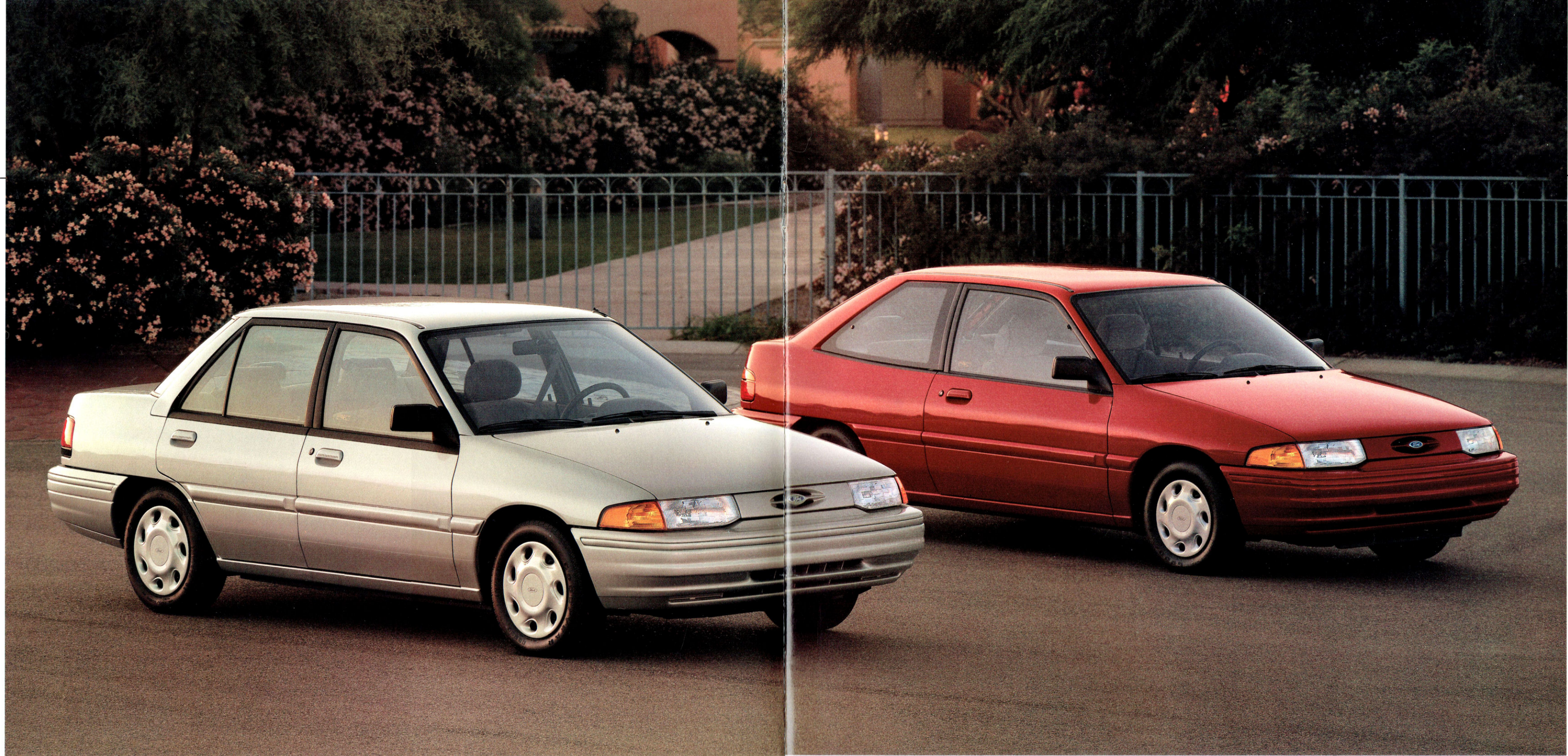


F O R D 1 9 9 4

ESCORT





## 1994 ESCORT

Ford Escort is the best-selling small car in America and has more repeat buyers than any other car in its class.\* Little wonder. It's an automobile that simply never stops getting better.

The corporate philosophy at Ford is one of continuous improvement, and Escort has benefited from constant

refinement. For 1994, that means a standard driver's side air bag supplemental restraint system (SRS) in all models. It means a new optional anti-lock brake system for the GT. It also means standard variable-interval wipers along with several interior and exterior appearance refinements.

But refinements are not limited to the vehicle itself. There's even an easy way to *purchase*. It's called the "One Price" Escort. Select LX 3-door, 4-door, 5-door or wagon models each have the same low price. And each features CFC-free air conditioning, rear window defroster, power

steering, AM/FM stereo and more. The wagon group (deluxe luggage rack and rear window wiper/washer) is included with the wagon. There's a separate "One Price" package for manual and automatic transaxles. Four terrific Escort models. All for one low price. It's that simple.

*Escort LX 4-Door in Opal Frost Clearcoat Metallic with Preferred Equipment Package 322A and LX 3-Door in Bright Red with Preferred Equipment Package 320A.*

*\*Based on 1992 New Vehicle Buyers Study.*

## 1994 ESCORT

Quality explains the continuing popularity of Escort. Its development program was established around a single goal: build an advanced small car with the quality to compete head-on with the world's best. The degree to which this goal has been realized can best be appreciated with a close inspection.

The consistency of the seams, the alignment of components, the feel of the materials — all underscore the strenuous commitment to fit and finish quality that

### ESCORT CHOICE

Escort 3-door and 5-door models combine 5-passenger roominess with the convenience of a rear liftgate for access to the cargo area. In the 4-door, 5-door and wagon, the rear doors are especially convenient for families on the go who get in and out frequently.

### ESCORT SAFETY

For those with younger passengers, Escort's standard child-safety rear door locks provide extra security. When they're activated, the rear doors can't be opened from inside. And every Escort now includes a standard driver's side air bag supplemental restraint system (SRS) in addition to the motorized shoulder/manual lap belts.

### ESCORT VALUE

When you've chosen the new Escort that's right for you, be sure to take advantage of the Preferred Equipment Package for your model (see page 14). It's comprised of a group of desirable features that can save you money over the prices of the same items if purchased separately.

*Escort LX 5-Door in Bright Calypso Green Clearcoat Metallic with the LX Preferred Equipment Package 322A.*



*Escort 3-Door LX in Oxford White with the Sport Appearance Group option and the LX Preferred Equipment Package 322A.*

began in the design phase and was reaffirmed at every step right up through manufacturing and assembly.

## ESCORT INTERIOR

Since automobiles are a lot more than just transportation, careful interior design means a more pleasurable riding experience for passengers. In the Ford Escort, advanced ergonomics has created a space-efficient environment with roominess and comfort for five.

But perhaps the most important factor contributing to driving enjoyment is peace of mind. All 1994 Escorts include a standard driver's side air bag supplemental restraint system (SRS) in addition to the motorized shoulder/manual lap belts.

### VERSATILE SEATING

Escort's front bucket seats recline and include cloth trim on the seating surfaces (full cloth trim with vinyl seat backs is standard in LX). The LX 60/40 split/fold rear seat is wide enough to accommodate three. Its split/fold feature offers convenient passenger/cargo-carrying versatility.

### A THOUGHTFUL LAYOUT

Escort's wraparound-style instrument panel integrates smoothly with the door panels. Instrumentation is purposefully arranged to maximize driver control and comfort. The center console has a handy front bin and cup holders. An electronic AM/FM stereo radio is standard with the LX. Its digital display alternates between

the station and the time. Demisters help clear the side windows and rear passengers enjoy their own heat ducts. Variable-interval wipers are included as well.

### CAPABILITY

Because there's often a need to tote groceries, luggage, sports equipment or

other gear from place to place, Escort's stowage area is also well designed. Behind the seats are a full 17.6 cubic feet (in the 5-door model) which the standard cargo cover conceals. When both of the seat backs are folded down, the cargo capability is increased to its 36-cubic-foot maximum.

Escort LX instrument panel in Opal Grey shows with the LX Preferred Equipment Package 322A and items of optional equipment.



Escort LX interior in Opal Grey shown with the LX Preferred Equipment Package 322A and items of optional equipment.



Above: A handy center console is standard equipment in all Escort models.

The LX split/fold rear seat provides versatility for managing people and cargo.



Escort's driver's side air bag supplemental restraint system, standard on all models, is designed to be used in conjunction with the motorized shoulder belt and the manual lap belt.



## ESCORT LX WAGON

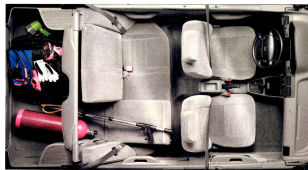
Escort Wagon, with its handsome silhouette, combines 5-passenger roominess with all the utility that makes a wagon a wagon. Even when the rear seat backs are in their normal "up" position, there's room for 30.6 cubic feet of cargo behind them. With both seat backs folded down, the usable stowage area is

increased to its generous 66.9-cubic-foot maximum.

The LX-level rear seat is split into a 60/40 arrangement for increased versatility. Fold one seat back down to allow for a passenger and lengthy cargo (skis for example). Fold both seat backs down to take advantage of the entire load area. A window-shade-type cargo

cover helps keep valuables out of sight in the rear portion of the cargo area when the rear seat backs are up.

For added convenience, the optional wagon group includes the deluxe luggage rack (ideal for extra stowage on a short trip from the lumber yard or a long vacation) and a handy rear window wiper/washer.



*Above: Escort LX Wagon in Electric Red Clearcoat Metallic with the LX Preferred Equipment Package 322A.*

*Left: The Escort LX Wagon interior, shown in Opal Gray with the LX Preferred Equipment Package 322A and items of optional equipment.*

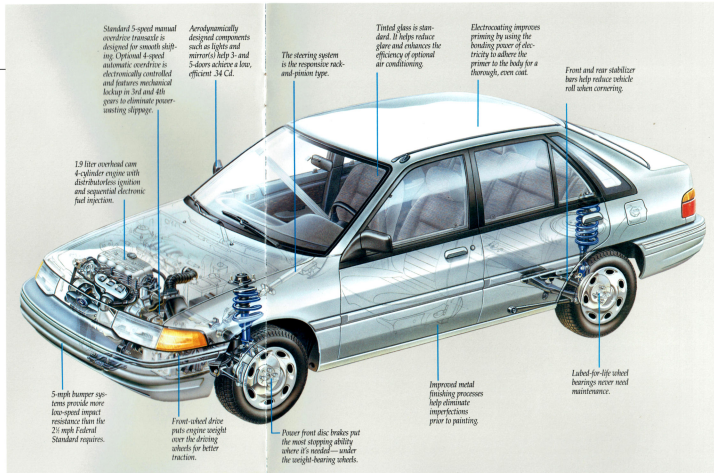
## QUALITY AND SAFETY

"Quality is Job 1" is more than just a phrase. It's a philosophy, a way of thinking. Escort was developed inside and out with a relentless commitment to quality and safety. Consequently, many significant aspects of the car are not apparent on the showroom floor. They're underneath the paint, hidden from view. Yet it's this commitment to quality materials and construction that really defines Escort's value.

### THE LOOK OF QUALITY

An example of under-the-skin vehicle integrity is finish quality. Escort benefits from improved metal finishing processes along with trained personnel who are responsible for locating and eliminating any imperfections that might otherwise show up in the painting process. Naturally, the better the preparation of the metal, the better the quality of the car's final finish.

Prior to painting, each Escort also undergoes a comprehensive seven-step cleaning and conditioning process. It is then electrocoated, which puts opposite electrical charges on the body and the primer, providing a thorough, even coat to all areas. These preliminary measures improve resistance to corrosion, which helps keep the vehi-



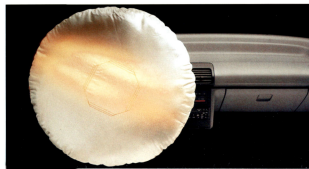
cle looking good longer.

Once this meticulous preparation process is complete, the final coats of paint are applied in state-of-the-art facilities employing stringent dust control measures to maximize finish quality and appearance.

Escort's independent strut-type suspension system incorporates geometry designed for enhanced handling.



Right: A standard driver's side air bag supplemental restraint system is provided to be used with the motorized shoulder/manual lap safety belts.



Escort safety features include:

Top: Standard lap/shoulder safety belts for rear outboard occupants.

Above: Standard child safety rear door locks which, when actuated, prevent the opening of the rear doors from inside.

## ESCORT GT

Spirited and fun to drive, Escort GT just might be the best thing going in its price range. This is that *other* Escort. Decidedly sporty. Rewardingly agile. Positively enjoyable. GT is for those people who equate driving with fun and want something extra when they get behind the wheel. And new for 1994 is an optional anti-lock brake system which can help you come to surer, smoother stops under adverse conditions.

The GT's firm front sport bucket seats are designed to help hold their occupants in



Escort GT in Oxford White shown with the GT Preferred Equipment Package.

The 1.8 liter engine's 16-valve configuration puts four valves per cylinder (two for intake, two for exhaust) for higher power output.



place, especially while cornering. The quick-reading analog instrument cluster includes a tachometer and a temperature gauge.

But the sport-oriented appointments and clean lines give way to the prime source of GT driving enjoyment. Under the hood is a 1.8 liter 4-cylinder engine with dual overhead cams,

multiple-port electronic fuel injection and 16 valves.

This multiple-valve setup promotes high-flow breathing and rapid-burn combustion for a higher power output than the conventional two valves per cylinder. It helps the engine generate 127 horsepower (SAE rating) at 6,500 rpm. That kind of performance capability

translates into extra confidence in passing situations.

GT's manual transaxle features short throws, smooth operation and an overdrive fifth gear that makes for efficient highway cruising (EPA mileage estimates unavailable at time of printing). An optional electronic 4-speed automatic overdrive transaxle is available for

those who are accustomed to a somewhat less active style of driving.

Precise power rack-and-pinion steering and a sport handling suspension contribute to Escort GT's agility. Power disc brakes at all four wheels and 15" performance radials also enhance the impressive roadability of this spirited 3-door.



Escort GT's well-appointed interior features sport buckets, a performance instrument cluster and a leather-wrapped steering wheel. It's shown here with the GT Preferred Equipment Package.

# STANDARD FEATURES AND OPTIONS

## PREFERRED EQUIPMENT PACKAGES AND OPTIONS

Note: Package content is subject to change.  
 Contents of LX 321A and 322A may vary by geographical area.  
 P = Included in package S = Standard O = Optional

	Escort 315A	LX 320A	"ONE PRICE"		GT 330A
			LX (manual) 321A	LX (automatic) 322A	
Light and convenience group: Includes dual electric remote-control mirrors, remote fuel door/decklid releases (except wagon), removable cup holder tray, dual map lights, cargo area light, engine compartment light, "headlamps on" warning chime, illuminated visor mirrors, illuminated ignition key bezel, and rear courtesy light switch for dome lamp (4-door, 5-door and wagon)	-	P	P	P	S
Rear window defroster	O	P	P	P	P
Power steering	-	P	P	P	S
CFC-free air conditioning system	-	O	P	P	P
Luxury convenience group: Includes tachometer (where not standard), tilt steering column and speed control	-	O	O	O	P
Automatic transaxle	O	O	-	P	O
Anti-lock braking system (ABS)	-	-	-	-	O
Power equipment group: Includes tachometer (where not standard), power side windows and door locks	-	O	O	O	O
Power moonroof (except wagon)	-	O	O	O	O
Engine block heater	O	O	O	O	O
Clearcoat paint	O	O	O	O	O
Comfort group: Includes air conditioning and power steering	O	-	-	-	-
Sport Appearance Group: Includes 14" aluminum wheels, rear liftgate spoiler, rear appliques, and tachometer (available with 3-door LX only)	-	O	O	O	-
Sunrise Red Decor Group: Sunrise Red exterior color, color-keyed wheels, front floor mats with "GT" embroidered in red	-	-	-	-	O
Wagon group: Includes deluxe luggage rack and rear window wiper/washer (wagon only)	-	O	P	P	-
AM/FM stereo radio	O	S	S	S	-
AM/FM stereo radio with cassette tape	O	O	P*	P*	S
AM/FM stereo radio with compact disc player	O	O	O	O	O
Premium sound system	O	O	O	O	O

\*Included on 3-door, optional elsewhere.

## COLORS, Escort

Exterior Paint Colors	Interior Trim Colors	
	Opal Grey	Mocha
Black	■	■
Oxford White	■	■
Bright Red	■	■
Brilliant Blue Clearcoat Metallic	■	■
Royal Blue Clearcoat Metallic	■	■
Bright Calypso Green Clearcoat Metallic	■	■
Opal Frost Clearcoat Metallic	■	■
Tucson Bronze Clearcoat Metallic	■	■

## COLORS, GT

Exterior Paint Colors	Interior Trim Color
	Opal Grey
Black	■
Oxford White	■
Bright Red	■
Electric Red Clearcoat Metallic	■
Sunrise Red Clearcoat Metallic	■
Iris Clearcoat Metallic	■
Bright Calypso Green Clearcoat Metallic	■
Cayman Green Clearcoat Metallic	■

## COLORS, LX

Exterior Paint Colors	Interior Trim Colors		
	Opal Grey	Royal Blue	Mocha
Black	■	■	■
Oxford White	■	■	■
Bright Red	■	■	■
Electric Red Clearcoat Metallic	■	■	■
Iris Clearcoat Metallic	■	■	■
Brilliant Blue Clearcoat Metallic	■	■	■
Royal Blue Clearcoat Metallic	■	■	■
Bright Calypso Green Clearcoat Metallic	■	■	■
Cayman Green Clearcoat Metallic	■	■	■
Opal Frost Clearcoat Metallic	■	■	■
Tucson Bronze Clearcoat Metallic	■	■	■

**LX with Sport Appearance Group colors:** Black, Oxford White, Bright Calypso Green Clearcoat Metallic, Cayman Green Clearcoat Metallic, Brilliant Blue Clearcoat Metallic, Iris Clearcoat Metallic and Electric Red Clearcoat Metallic.

## PRODUCT CHANGES

Following publication of the catalog, certain changes in standard equipment, options, prices and the like, or product delays, may have occurred which would not be included in these pages. Your Ford Dealer is your best source for up-to-date information.

Ford Division reserves the right to change product specifications at any time without incurring obligations.

## MAJOR STANDARD FEATURES

### Escort 3-Door

- Tinted glass; side window demisters
- 4-speed heater/defroster with rear ducts
- Temperature gauge, trip odometer
- 2-speed wipers with variable interval
- Driver's side air bag supplemental restraint system, motorized front shoulder belt system with manual lap belts, rear outboard lap/shoulder belts and center lap belt
- Removable cargo area cover
- Full door trim with armrest and map pocket
- Console with bin and cup holders
- Glove box; passenger visor mirror
- Low-back cloth and vinyl reclining bucket seats, full-fold rear seat
- Aerodynamic halogen headlamps
- Flip-out quarter windows (all 3-doors)
- Driver's side remote-control mirror

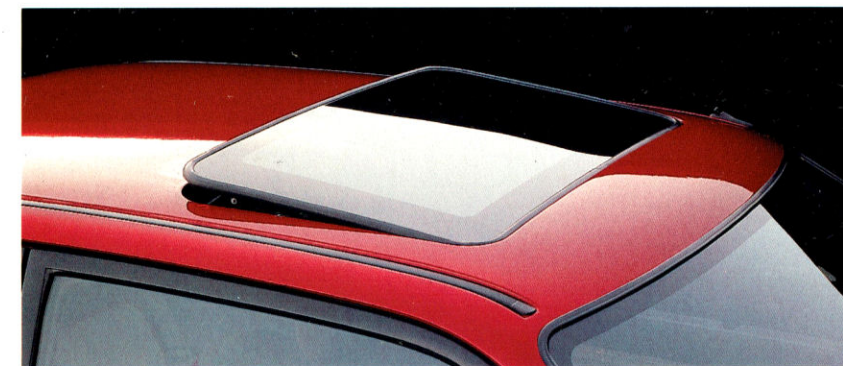
### LX (in addition to or in place of standard items)

- Color-keyed bumpers
- Safety rear door locks (4-door, 5-door, and wagon)
- Electronic AM/FM stereo radio with integral clock (may be deleted for credit)
- Cloth door trim with styled armrest and carpeted lower portion
- Sport cluster with tachometer (4-door sedan)
- Low-back luxury cloth reclining bucket seats with vinyl seat backs
- Split/fold (60/40) rear seat
- Color-keyed bodyside protection moldings
- Color-keyed door handles
- Rear reflex applique (except wagon)
- P175/65R BSW tires with full wheel covers

### GT (in addition to or in place of LX items)

- Dual electric remote-control mirrors
- Light and convenience group
- Console with bin, removable cup holder tray
- Illuminated visor mirrors
- Sport performance cloth reclining bucket seats/integral rear seat head restraints and driver's seat height adjustment
- Leather-wrapped steering wheel
- Remote-control decklid, fuel door
- Electronic AM/FM stereo radio with cassette/clock (may be deleted for credit)
- Asymmetrical grille, fog lamps
- Rocker panel cladding
- Rear spoiler

(See specifications on back cover)



The optional power moonroof lets in the sun or the stars for a great open-air feeling.



Far left: A rear wiper/washer and deluxe luggage rack comprise the optional wagon group.

Left: The power equipment group is optional with selected models.



Standard with GT, the AM/FM stereo radio with cassette tape is available with other Escorts.



The optional compact disc player produces very clean, high-quality sound.



Escort wheels, left to right: standard semi-styled stamped steel wheel; LX full luxury wheel cover; seven-spoke aluminum wheel (Sport Appearance Group); GT styled aluminum wheel.



## ESCORT SPECIFICATIONS

### Engine

Type	Overhead-cam in-line 4-cylinder
Valves	8
Displacement	1.9L (113 cu. in.)
Horsepower (SAE net)	88 @ 4,400 rpm
Torque (SAE net lb.-ft.)	108 @ 3,800 rpm
Fuel system	Sequential electronic fuel injection

### Engine, Escort GT

Type	Dual-overhead-cam 4-cylinder
Valves	16
Displacement	1.8L (109 cu. in.)
Horsepower (SAE net)	127 @ 6,500 rpm
Torque (SAE net lb.-ft.)	114 @ 4,500 rpm
Fuel system	Multiple-port electronic fuel injection

### Transaxle

Type	5-speed manual overdrive; 4-speed automatic overdrive optional
------	---

### Chassis

Body type	Utilized
Suspension, front	Strut-type independent front suspension with upper strut-mounted coil springs and stabilizer bar; handling suspension with stabilizer bar on GT
Suspension, rear	Strut-type independent twin trapezoidal link rear suspension with upper strut-mounted coil springs and stabilizer bar; handling suspension with stabilizer bar on GT

### Chassis, cont'd

Steering	Manual rack-and-pinion, 23.7:1 overall ratio (power 170:1 overall ratio available and included on GT)
Brakes	Four-wheel hydraulic, power front disc/rear drum (four-wheel power disc on GT)
Tires	P175/70R13 BSW all-season; P175/65R14 BSW all-season (LX) P185/60R15 84H performance (GT)
Fuel capacity	11.9 gallons (13.2 for GT)

Dimensions	3-Door	4-Door	5-Door	Wagon
Wheelbase	98.4"	98.4"	98.4"	98.4"
Length	170.0"	170.9"	170.0"	171.3"
Height	52.5"	52.7"	52.5"	53.6"
Width	66.7"	66.7"	66.7"	66.7"
Front tread	56.5"	56.5"	56.5"	56.5"
Rear tread	56.5"	56.5"	56.5"	56.5"
Front head room	38.4"	38.4"	38.4"	38.4"
Rear head room	37.6"	37.4"	37.6"	38.5"
Front leg room	41.7"	41.7"	41.7"	41.7"
Rear leg room	34.6"	34.6"	34.6"	34.6"
Front shoulder room	53.7"	53.7"	53.7"	53.7"
Rear shoulder room	52.6"	53.7"	53.7"	53.7"
Trunk or cargo volume (cu. ft.)*	36.2	12.1 <sup>†</sup>	36.0	66.9
Passenger capacity	5	5	5	5

\*With rear seat back(s) folded down. <sup>†</sup>With rear seat back(s) up.

### BUMPER-TO-BUMPER COVERAGE

The 36-month/36,000-mile bumper-to-bumper coverage of Ford's new vehicle limited warranty covers the complete vehicle (except tires, battery, service adjustments and other items covered under separate provisions) against defects in factory-supplied materials or workmanship. For complete information, see your dealer.

### FORD CITIBANK CREDIT CARD

Using your Ford Citibank Visa® or MasterCard® could earn you hundreds, even thousands of dollars from Ford toward the purchase or lease of a new Ford, Lincoln or Mercury product. To apply or get more information, call

1-800-374-7777. Or visit a Ford or Lincoln-Mercury Dealer, or a branch office of Citibank.

### ROADSIDE ASSISTANCE PROGRAM

Every new Ford includes the assurance of an emergency Roadside Assistance Program provided by Ford Auto Club, Inc. during the 3-year/36,000-mile bumper-to-bumper warranty period. Help is a toll-free phone call away 24 hours a day, anywhere in the continental United States should you need any towing assistance, fuel delivery, tire change, a jump start or even help when you're locked out of your car. Ask your Ford Dealer for complete details on the Ford Roadside Assistance

Program and a copy of this limited warranty.



Optional Ford Extended

Service Plans can cover major components on new Ford cars and light trucks for longer than the vehicle's basic warranty. Your Ford Dealer has full details.



Ford Credit is a full service

company that makes a wide variety of financing and leasing programs available to qualified buyers through the Ford Dealer of your choice. Through Ford Credit's financing or Red Carpet leasing, arrangements suited to your

special needs can be made quickly and conveniently right at the dealership. Ask your Ford Dealer for the facts on any of Ford Credit's financing or lease plans.

### OPTIONS AVAILABILITY

Options shown or described in this catalog are available at extra cost and may be offered only in combination with other options or subject to additional ordering requirements or limitations.



Printed on recycled paper  
10% post-consumer waste

