

The 2006 Saturn VUE



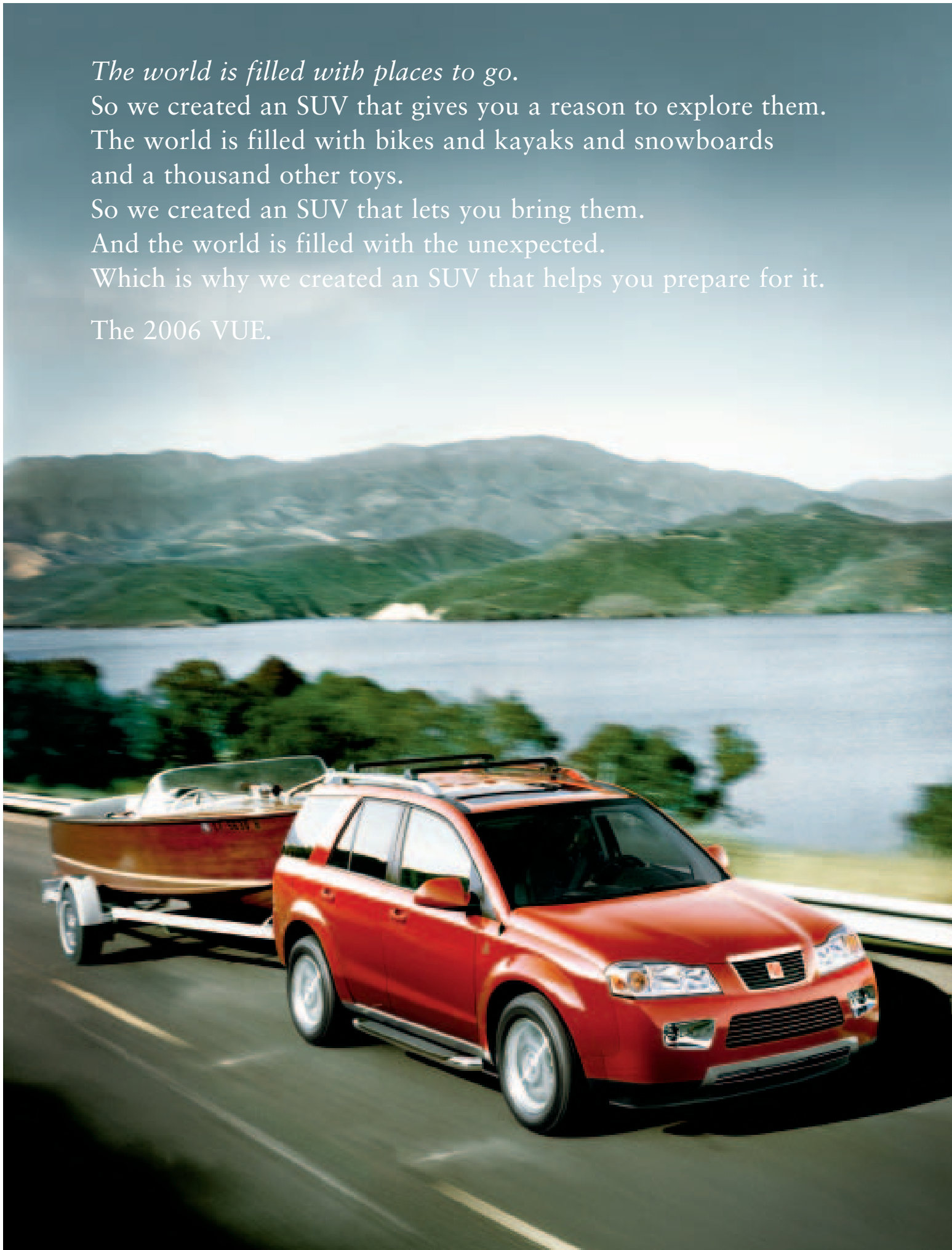






The VUE AWD V6 shown in Chili Pepper Red with Retailer-installed roof rack cross bars, side step bars and available Chrome Package featuring front and rear chrome skid plates.

The world is filled with places to go.
So we created an SUV that gives you a reason to explore them.
The world is filled with bikes and kayaks and snowboards
and a thousand other toys.
So we created an SUV that lets you bring them.
And the world is filled with the unexpected.
Which is why we created an SUV that helps you prepare for it.
The 2006 VUE.





The VUE AWD V6 shown with Grey Leather Package and other available features.



Discover wide open spaces, inside and out. Start by choosing your travel style. Do you prefer an engine that's powerfully efficient or efficiently powerful? The 143-horsepower 2.2-litre engine is specially tuned for the stop-and-start driving you experience around town. For something with more brawn behind its brains, our class-leading¹ 250-horsepower V-6 offers confidence in the passing lane, a 1,587 kilogram (3,500-pound) towing capacity² and, in the front-wheel-drive VUE, the segment's best overall gas mileage.¹ Both engines come with front-wheel drive, and the V-6 is also available with all-wheel drive. Inside, the 70/30-split rear seats make room for items up to 2.4 metres (8 feet) long once you've folded down the front passenger seat.³ Smaller stuff is no less important — so there's hidden console storage, handy cargo bins and a rear cargo organizer that keeps bags and their contents in place, instead of all over the place.



¹Based on 2005 GM Small Utility segment and latest available competitive data. ²Maximum trailer ratings are calculated assuming a properly equipped base vehicle plus driver. Towing capacity is not applicable to VUE Red Line models. See specifications page for details. Based on GM and EnerGuide testing in Canada. Canadian EPA estimates not yet available. ³Cargo and load capacity limited by weight and distribution.





The VUE AWD V6 shown in Storm Grey with just a few of nearly 40 accessories available from your Saturn Retailer.



The VUE AWD V6 with CD player and steering wheel audio controls, standard.



Shown with available features.



If you drive too fast, they'll only see a blur. If the VUE is about taking it anywhere, the VUE Red Line is about taking it further. Big 18-inch alloy wheels on wide, low-profile tires keep you tuned and in touch with the street. Lowered sport suspension with front and side ground effects improve aerodynamics. And with 250 horsepower, the engine delivers performance that puts the sport back in sport utility vehicle. Inside, the contact points of the driving experience have earned long overdue respect: The floor pedals feature gleaming chrome accents that reflect footwell lighting in warm amber or cool blue. The seats get special treatment, too. They're wrapped in sueded fabric trimmed in ebony leather, with front sport seat bolsters that help your body corner right along with the VUE Red Line. For complete Red Line specs, visit saturncanada.com.





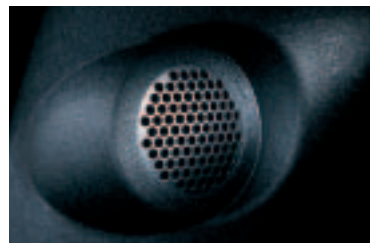
The VUE Red Line shown in Black Onyx with lowered sport-tuned suspension, 18-inch wheels and modified front grille.



The VUE is available with a DVD entertainment system.¹ Visit saturncanada.com for all audio options.
VUE Red Line shown.



It may become a destination in itself. If time flies when you're having fun, long boring drives are behind you. Right in front of you, notice the steering wheel audio controls for the CD player and radio, standard on all models. Choose the available Saturn Advanced Audio System, and every note is powered by a 180-watt external amplifier pumping six premium speakers. Or enjoy your own playlists by plugging your MP3 player into the built-in auxiliary jack. And to keep your back seat passengers from becoming back seat drivers, the available DVD player¹ is just the thing to keep their eyes off the road.



¹Available early 2006.
Simulated DVD picture.



Nothing we put into it is as important as what you put into it. In a split second that feels like an eternity, you can forget all about the CD player and think only of your family's safety. Rest assured, we've spent more than a split second thinking about your safety—just ask the US National Highway Traffic Safety Administration.¹ The VUE received their top rating of five stars for front- and side-impact tests, thanks in no small part to our dual-stage front air bags² and our steel spaceframe's crumple zones, which absorb collision energy that would otherwise affect the passenger compartment. That compartment now features OnStar,[®] standard on every VUE, including a one-year subscription to the Safe & Sound Service Plan. OnStar can save time by unlocking locked doors; more importantly, it can help save lives by automatically sending for assistance if your air bags deploy.³ New with our available Head Curtain Side Air Bags² is a Rollover Sensing System, designed to provide greater protection in case of rollover. For more on VUE safety, visit saturncanada.com.





¹See inside back cover for important information about the VUE's safety rating. ²Air bag inflation can cause severe injury or death to anyone too close to the bag when it deploys. Be sure every occupant is properly restrained. See inside back cover for important information about air bags, including a note about child safety. ³See inside back cover for important information about OnStar.

VUE Exterior Colours

Want to see all the colours from a different angle? Visit saturncanada.com, and the VUE is yours to control.



Polar White



Black Onyx



Silver Nickel Metallic



Chili Pepper Red



Fusion Orange¹



Pacific Blue Metallic

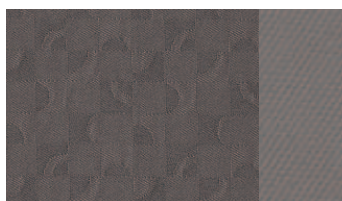


Storm Grey²
(Late Intro)

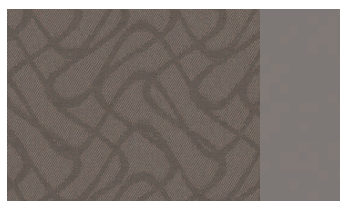


Cypress Green Metallic
(Early Exit)

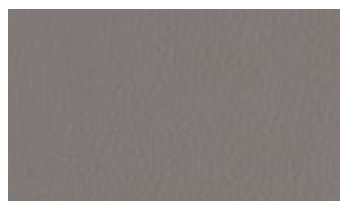
VUE Interior Colours



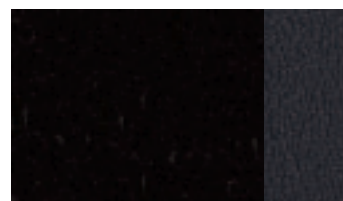
Grey Cloth (FWD 4)



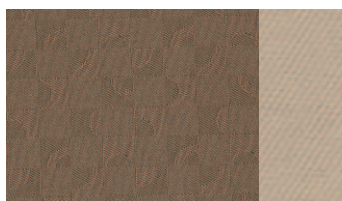
Grey Cloth (FWD V6/AWD V6)



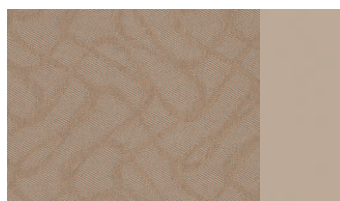
Grey Leather



Ebony Preferred Suede Seat
with Leather Bolster (Red Line)



Tan Cloth (FWD 4)



Tan Cloth (FWD V6/AWD V6)



Tan Leather

VUE Colour Combinations

Exterior Paint	Cloth	Available Leather Package	Leather Trim / Cloth (Red Line)
Polar White	Grey, Tan	Grey, Tan	—
Black Onyx	Grey, Tan	Grey, Tan	Ebony
Silver Nickel	Grey	Grey	Ebony
Chili Pepper Red	Grey, Tan	Grey, Tan	Ebony
Fusion Orange ¹	Grey, Tan	Grey, Tan	—
Pacific Blue	Grey, Tan	Grey, Tan	—
Storm Grey ²	Grey	Grey	—
Cypress Green Metallic	Grey, Tan	Grey, Tan	—

VUE Wheels



16" Standard Cover
(FWD 4)



16" Available Alloy
(FWD 4)



16" Standard Alloy
(FWD V6)



17" Standard Alloy (AWD V6)
17" Available Alloy (FWD V6)



18" Standard Alloy
(Red Line)

¹Limited availability. ²Available early 2006.

VUE Specifications

Engine and Transmission	FWD 4	FWD V6	AWD V6
Engine	2.2-litre, DOHC, Ecotec, 16-valve, inline-4	3.5-litre, SOHC, 24-valve, V-6	3.5-litre, SOHC, 24-valve, V-6
Horsepower	143 @ 5,400 rpm	250 @ 5,800 rpm	250 @ 5,800 rpm
Torque (lb-ft)	152 @ 4,000 rpm	242 @ 4,500 rpm	242 @ 4,500 rpm
Transmission (standard)	5-speed manual	5-speed automatic	5-speed automatic
Transmission (available)	4-speed automatic	—	—
Chassis			
Drivetrain	Front-engine/front-wheel drive (FWD 4/FWD V6); Front-engine/all-wheel drive (AWD V6)		
Body construction	Steel spaceframe with front and rear crumple zones, side-impact protection and front and rear vibration-isolating subframes		
Suspension	Four-wheel independent with front and rear stabilizer bars		
Steering	Electric power with variable assist		
Brakes	Power-assisted ventilated front disc/rear drum		
Weights and Capacities			
Curb weight, manual/automatic kg (lb.)	3,207/— (1,455/—)	—/3,478 (—/1,577)	—/3,630 (—/1,647)
Passenger volume litres (cu. ft.)	2,871 (101.0)	1,501 (53.0)	1,501 (53.0)
Cargo-area volume with seat backs up/down litres (cu. ft.) ¹	872/1,807 (30.8/63.8)	872/1,807 (30.8/63.8)	872/1,807 (30.8/63.8)
Towing capacity (max. kg (lb.); not applicable to Red Line models) ²	680 (1,500)	1,587 (3,500)	1,587 (3,500)
Passenger seating	5	5	5
Fuel capacity (approx. litres (imp. gal.))	62.4 (13.7)	62.4 (13.7)	62.4 (13.7)
Fuel Economy Estimates City / Hwy L/100 km (mpg)³			
Manual transmission	10.1/6.4 (28/44)	—	—
Automatic transmission	10.1/7.1 (28/40)	11.9/7.8 (24/36)	12.6/8.4 (22/34)
Exterior Dimensions mm (in.)			
Length	4,605 (181.3)	4,605 (181.3)	4,605 (181.3)
Wheelbase	2,707 (106.6)	2,707 (106.6)	2,707 (106.6)
Width	1,817 (71.5)	1,817 (71.5)	1,817 (71.5)
Height	1,686 (66.4)	1,686 (66.4)	1,686 (66.4)
Track, front/rear	1,550/1,550 (61.1/61.1)	1,550/1,550 (61.1/61.1)	1,550/1,550 (61.1/61.1)
Ground clearance	203 (8.0)	203 (8.0)	203 (8.0)
Interior Dimensions (front / rear mm (in.))			
Legroom	1,047/934 (41.2/36.8)	1,047/934 (41.2/36.8)	1,047/934 (41.2/36.8)
Headroom	1,030* / 1,025* (40.6* / 40.3*)	1,030* / 1,025* (40.6* / 40.3*)	1,030* / 1,025* (40.6* / 40.3*)
Shoulder room	1,389 / 1,389 (54.7 / 54.7)	1,389 / 1,389 (54.7 / 54.7)	1,389 / 1,389 (54.7 / 54.7)
Hip room	1,315 / 1,337 (51.8 / 52.6)	1,315 / 1,337 (51.8 / 52.6)	1,315 / 1,337 (51.8 / 52.6)
* Without sunroof			

VUE Features and Options

For a complete list, visit saturncanada.com

Comfort and Convenience	FWD 4	FWD V6	AWD V6
70/30-split folding rear seat backs and two-position reclining rear seats	●	●	●
Air conditioning with dust and pollen filter	●	●	●
Appearance Package: 16-inch alloy wheels, rear spoiler and body-colour running boards	○	—	—
Chrome Package: chrome skid plates, front and rear and raised chrome roof rails ^{4,5}	○	○	○
Comfort Package: six-way power driver's seat with adjustable lumbar support and heated front seats ⁴	○	○	○
Dent/corrosion-resistant bodyside panels	●	●	●
Flat-towable behind recreational vehicle	●	●	●
Fold-flat front passenger seat back with scuff-resistant back	●	●	●
Leather Package: leather-trimmed seats and steering wheel	○	○	○
Leather-wrapped steering wheel with audio controls	—	●	●
Power sunroof (not available with DVD entertainment system)	○	○	○
Preferred Package: power windows, door locks and side-view mirrors; remote keyless entry; automatic headlamps; auto-dimming interior rear-view mirror with temperature and compass display; driver and passenger map lights; cruise control; Saturn Security System	●	●	●
Rear cargo organizer	●	●	●
Rear window washer/wiper and defogger with timer	●	●	●
Reclining front bucket seats with height-adjustable driver's seat and inboard fold-down armrests	●	●	●
Three 12-volt power outlets in front and rear	●	●	●
Safety and Security			
Anti-lock brakes	●	—	●
Anti-lock brakes with Traction Control	○	●	—
Content Theft, Theft-Deterrent System	●	●	●
Daytime running lamps	●	●	●
Dual-stage driver and front passenger air bags with Passenger Sensing System ⁶	●	●	●
Engine-immobilizing theft-deterrent feature	●	●	●
Head Curtain Side Air Bags with Rollover Sensing System ⁶	○	○	○
Height-adjustable front safety belts with pretensioners and energy-absorbing retractors	●	●	●
OnStar [®] System with one-year Safe & Sound Service Plan ⁷	●	●	●
Projector-beam fog lamps	—	●	●
Entertainment Systems			
CD player with AM/FM stereo, auxiliary input jack, six coaxial speakers and steering wheel audio controls	●	●	●
CD/MP3 player with AM/FM stereo, auxiliary input jack, six coaxial speakers and steering wheel audio controls	○	○	○
DVD entertainment system: seven-inch, flip-down LCD screen, remote control and dual wireless headphones (not available with power sunroof)	○	○	○
Saturn Advanced Audio System: 180-watt external amplifier, eight-inch subwoofer, six premium speakers	○	○	○
Six-disc, in-dash CD/MP3 player with AM/FM stereo, auxiliary input jack, six coaxial speakers and steering wheel audio controls	○	○	○
Red Line Package			
Lowered sport-tuned suspension with performance springs and struts, 18" alloy wheels, fascia and side-rocker ground effects, chrome exhaust tip, 6-way power seats with ebony sueded fabric and leather trim, custom floor mats, ambient footwell lighting and chrome-accented pedals	—	○	○

● = standard ○ = available — = not available

¹Cargo and load capacity limited by weight and distribution. ²With a properly equipped vehicle and appropriate trailer hitch. Maximum trailer ratings are calculated assuming a base vehicle, except for any options necessary to achieve the rating, plus driver. The weight of other optional equipment, passengers and cargo will reduce the maximum trailer weight your vehicle can tow. See your Saturn Retailer for details. ³Based on GM and EnerGuide testing in Canada. Canadian EPA estimates not available at time of printing. ⁴Not available with Red Line package. ⁵Chrome skid plates available as single option on FWD 4. ⁶See inside back cover for important information about air bags, including a note about child safety. ⁷See inside back cover for important information about OnStar.

Featured Equipment



Centre console. Handy hidden storage for CDs and cellphones that also includes a 12-volt power outlet for concealed phone charging. For easy cleaning, the cup holders are removable.



Steering wheel audio controls. This second set of controls complements those on the dashboard for stretch-free stereo adjustments and OnStar hands-free calling while driving. Conveniently, you'll find the cruise control buttons on the wheel, too.



Auto-dimming interior rear-view mirror. In addition to dimming for better nighttime visibility, this electro-chromatic mirror displays temperature and compass direction.



Fold-flat front passenger seat back. Fold down this scuff-resistant seat back, and you've got a handy table-like surface. And with the rear seat folded down too, there's room for items up to 2.4 metres (8 feet) long.¹



Power outlets. Charge up your MP3 player, laptop or phone with any of three easy-access 12-volt outlets, front and rear.



Power windows. The driver express-down feature allows one-touch ease, while the rear window lock helps control access from the back seat.

¹Cargo and load capacity limited by weight and distribution. ²Not available on VUE Red Line. ³Retailer installed.

Available Equipment



Roof rails. Strong, so they support up to 45 kilograms (100 pounds); chrome, so they support the need for style.^{2,3}



Heated seats. Two settings, for cold or ice-cold days. Part of the Comfort Package, which features a six-way power driver's seat with adjustable lumbar support.²



Power sunroof. For sunny days, starry nights or fresh air any time.



Red Line. This high-performance design package includes 18-inch alloy wheels, ground effects, chrome-accented pedals, ambient footwell lighting and leather-trimmed sport seats.



Six-disc, in-dash CD/MP3 player. Load up to six CDs for hours of uninterrupted music sent through six coaxial speakers. For more audio options, visit saturncanada.com.



Fog lamps. When visibility is low, these projector-beam lights help you see and be seen. Standard on V6 models.

Retailer-installed Accessories



Brush guard. With this addition, you'll acknowledge the more rugged nature of the path less travelled, on road or off.²



Painted running boards. Add a more finished look and a little extra reach when washing the car or grabbing equipment off the roof rack.²



Roof rack with attachments. Keep wet, muddy gear out of your interior cargo areas. Attachments are available for most outdoor equipment. Visit saturncanada.com for details.



Interior bike rack. Keeps bikes safe, secure, and protected from the indignities of road-blown debris.



Rear spoiler. Matched to body colour to keep the visual flow as smooth as the wind.



Trailer hitch. For gear that's too big for the cargo area or roof rack.³







The ever-expanding Saturn family: the ION[®] sedan, seven-passenger RELAY[™], VUE[®] and ION Red Line.

For more information, visit saturncanada.com.

What makes a Saturn a Saturn?

It's more than you can see in a picture or read on a page.

What makes Saturn different can only be experienced.

It's being with you today, tomorrow and for the next 200,000 kilometres.

It's about a no-hassle experience.

It's about giving you thirty days to change your mind.¹

It's about making sure you love what you drive.

In other words, it's about you.



¹See inside back cover for details about Saturn's 30-day Vehicle Exchange Program.



It all started with the very first Saturn. How do you design a car people will dream about? How do you build a car people will love? Finding the answer, year after year, is what keeps us going. And this year, we've been especially busy designing a whole new generation of vehicles that will re-establish what it means to own, love and drive a Saturn. In 2006, you'll meet the SKY™ roadster, followed by a continuing stream of surprises. In every vehicle, you'll see even more sculptural lines, glowing interiors, advanced features, and soulful expressions of Saturn's philosophy of putting people first. In other words, the next few years are going to be big. And, as always, it's going to be a fun ride.

The vehicle shown is a pre-production model; the actual production model may vary.



Important words about this brochure

We have tried to make this brochure comprehensive and factual. We reserve the right, however, to make changes at any time, without notice, in prices, colours, materials, equipment, specifications, models and availability. Specifications, dimensions, measurements, ratings and other numbers in this brochure and other printed materials provided at the Retailer or affixed to vehicles are approximates based upon design and engineering drawings and prototypes and laboratory tests. Your vehicle may differ due to variations in manufacture and equipment. Since some information may have been updated since the time of printing, please check with your Saturn Retailer for complete details. Saturn reserves the right to lengthen or shorten the model year for any product for any reason, or to start and end model years at different times.

A note about air bags and child safety

Always use safety belts and proper child restraints. Even in vehicles equipped with air bags and the Passenger Sensing System, children are safer when properly secured in a rear seat. Never place a rear-facing infant restraint in the front seat of any vehicle equipped with an active air bag. Air bag inflation can cause severe injury or death to anyone too close to the bag when it deploys. Be sure every occupant is properly restrained. See your vehicle's Owner's Handbook and child-safety seat instructions for more information.

OnStar® information

OnStar services require vehicle electrical system (including battery), wireless service, and GPS satellite signals to be available and operating for features to function properly. OnStar acts as a link to existing emergency service providers. Subscription Service Agreement required. Due to the transition of the wireless industry from analogue to digital technology, as of January 1, 2008, OnStar plans to offer service only through equipment that operates on the digital network, which may require the purchase of a system upgrade for eligible vehicles. Call 1-888-4-ONSTAR (1-888-466-7827) or visit onstar.ca for OnStar's Terms and Conditions, Privacy Policy, and system limitations and details.

Important information about the VUE's safety rating

Testing conducted by the US National Highway Traffic Safety Administration (NHTSA) on four-door 2006 Saturn VUE 4 Cylinder for front driver and passenger, side front seat and side rear seat impact. The government star rating is part of the NHTSA New Car Assessment Program (NCAP). Visit safercar.gov for details.

Saturn's Vehicle Exchange Program

Within the first 30 days or 2,500 kilometres of delivery, whichever comes first, the original purchaser may exchange his or her Saturn vehicle if not completely satisfied. In the event that an owner returns his or her vehicle, he or she will exchange it for another 2006 Saturn vehicle. See Retailer for limitations and restrictions. All the same factory-supported initiatives will be included on the exchange vehicle that were on the original vehicle. The vehicle must be returned in the condition in which it was delivered, without damage or excessive wear and tear. If non-warranty repairs equal to or greater than \$500 have been performed or are necessary, the vehicle is not eligible to be returned. If less than \$500, the damage must be repaired or the estimate deducted from the credit toward the exchange vehicle.

New Vehicle Limited Warranty

Covered for 3 years/60,000 kilometres (whichever comes first): the complete vehicle, tires, towing to your nearest Saturn Retailer, repairs made to correct any vehicle defect, with no charge for most warranty repairs.

An important note about alterations and warranties

Installations or alterations to the original equipment vehicle (or chassis) as distributed by General Motors are not covered by the General Motors New Vehicle Limited Warranty. The special body company, assembler, equipment installer or upfitter is solely responsible for warranties on the body or equipment and any alterations (or any effect of the alterations) to any of the parts, components, systems or assemblies installed by GM. General Motors is not responsible for the safety or quality of design features, materials, or workmanship of any alterations by such suppliers.

Assembly

Saturn vehicles and their components are assembled or produced by different operating units of General Motors, its subsidiaries or suppliers to GM worldwide. We sometimes find it necessary to produce Saturn vehicles with different or differently sourced components than originally scheduled. Since some options may be unavailable when your vehicle is assembled, we suggest that you verify that your vehicle includes the equipment you ordered, or, if there are changes, that they are acceptable to you.

Engines

Saturn products are equipped with engines produced by GM Powertrain or other suppliers to GM worldwide. The engines in Saturn products may also be used in other GM makes and models.

Updated service information

Saturn Retailers receive useful service bulletins about Saturn products. See your Retailer for more information.

*The 2006 vehicle's powertrain components are covered by a limited Special Powertrain Component Coverage for up to 5 years or 100,000 km, whichever comes first.
†Within the first 30 days or 2,500 km of delivery, whichever comes first. ††See Retailer or visit saturncanada.com for limitations, restrictions and coverages.
OnStar is a registered trademark of OnStar Corporation.
Vehicle on cover shown with available Retailer-installed accessories.
©2005 Saturn Corporation. Saturn and its logo are registered trademarks of Saturn Corporation.

There's something we'd like to say. And that is: Yes.
Yes to horsepower and acceleration, dirt roads and scenic routes. Yes to designs that turn heads and features that embrace technology. Yes to loading up the bikes and skis and kayaks. Yes to getting out there. Yes to making memories and swapping stories. Yes to feeling protected. Yes to everything we love about driving. Yes to the 2006 Saturn VUE.



SATURN



saturncanada.com

123-06-B-002E