

NOVA



1 9 8 7 C H E V R O L E T

## NOVA AT A GLANCE

Models	Page
Nova CL Sedan	4
Nova CL Hatchback	6
Nova Sedan	13
Interiors	
Standard	8
CL	8
Instrument Panels	10
Engineering/Power Teams	14
Option Packages	16
Colors	18
Specifications	18
Standard Features	18
Safety Features	19
Additional Information	19

Nova Hatchback  
Sedan in Red.



Nova Sedan in Silver  
Metallic.



# NOVA 1987

High quality, contemporary technology, classy styling, roomy interior, precision manufacture, affordability—Chevy Nova is everything you want in a small car.

### TECHNICAL BASICS.

■ Nova is the product of the innovative joint-manufacturing venture between General Motors and Toyota Motor Corporation.

■ Its 1.6 Liter four-cylinder engine features an overhead camshaft design that delivers high output from a small cylinder displacement. Nova's net horsepower is 74 at 5200 RPM; net torque is 86 at 2800 RPM.

■ A 5-speed manual transmission with fourth and fifth gear overdrive is standard.

■ Front drive, four-wheel independent suspension, rack-and-pinion steering, power front disc/rear drum brakes and corrosion-resistant unit body construction are all standard.

**TWO AVAILABLE MODELS.** Nova gives you two models to choose from.

■ A four-door sedan with aerodynamic low hood/high rear deck design.

■ A versatile four-door hatchback with up to 35.5 cu. ft. of luggage space.

### CONTEMPORARY EXTERIOR DESIGN.

■ Nova offers a wedge shape for excellent fuel economy.\*

■ An expansive six-window design with thin pillars contributes to excellent all-around visibility.

■ Rugged 5-MPH bumpers are integrated into the body design.

■ Protective body side moldings are standard on all models.

**SPACIOUS INTERIOR COMFORT.** Nova is a genuine 5-passenger car. Interior features include:

■ Cloth reclining front bucket seats with adjustable head restraints.

■ Wall-to-wall cut-pile carpeting.

■ Fully upholstered door trim panels with cloth inserts.

■ Convenient front door pockets.

There are two interior trim levels to choose from: the well-appointed standard or the optional luxury CL. (See p. 8 for details.)

**SURPRISING STANDARD EQUIPMENT.** Every Nova offers the following equipment at no additional cost:

■ Tinted glass, all windows.

■ Rear seat heat ducts.

■ Rear window defogger.

■ Side window defoggers.

■ All-season steel-belted radial tires.

■ AM radio (may be deleted for credit).

■ Trip odometer and low-fuel-warning lamp.

Chevy Nova. It's more than you'd expect. More technology. More quality. More room. More equipment. And more fun.

\*EPA estimated 29 city, 37 highway MPG. Use for comparison. Your mileage may differ. Nova equipped with standard 5-speed transmission.



Nova Sedan in White with optional CL package and aluminum wheels.

# NOVA CL SEDAN

Mix practicality with comfort. Combine with a dash of excitement. When you order the optional CL package on Nova, here's what you get.

## A DISTINCTIVE EXTERIOR APPEARANCE.

- Color-keyed body side pin stripes.
- Wide body side moldings.
- Body-color bumpers.
- Bright roof drip and door beltline moldings.
- Black-painted door frames.
- Black rear trim panel.
- Standard full wheel covers.
- Optional CL aluminum wheels.

## A LUXURIOUS INTERIOR WITH MANY ADDED FEATURES.

- Velour Custom Cloth upholstery is available in a choice of three colors.
- The reclining front bucket seats include lumbar support and vertical adjustments on the driver's seat.

- The center floor console features a storage box and armrest.
- Tilt steering column.
- Remote trunk lid release.
- Remote fuel filler door release.
- Passenger-side visor vanity mirror.
- Luggage compartment carpeting and lamp.
- Passenger assist grips.
- Custom soft-feel steering wheel.

**CONVENIENT OPTION PACKAGES.** Nova CL luxury and convenience options are grouped into Option Packages. These available features include air conditioning, an electronically tuned Delco AM/FM stereo radio, intermittent wipers and aluminum wheels. Consult the Option Package chart on page 16 for complete ordering information.

# NOVA CL HATCHBACK

Presenting a model of versatility. Nova Hatchback and CL Hatchback (shown here) are compact five-passenger automobiles with a difference. The big difference a hatchback can make.

**WIDE-OPEN SPACE.** Nova's wide rear hatch opens right at bumper level for handy loading. With the standard split-back rear seat up, you have room for five adults and their luggage. Fold one seat-back down for more luggage space and room for three. With both seat-backs folded forward, Nova offers up to 35.5 cubic feet of cargo room. In fact, this versatile hatchback has more cargo capacity than many full-size sedans.

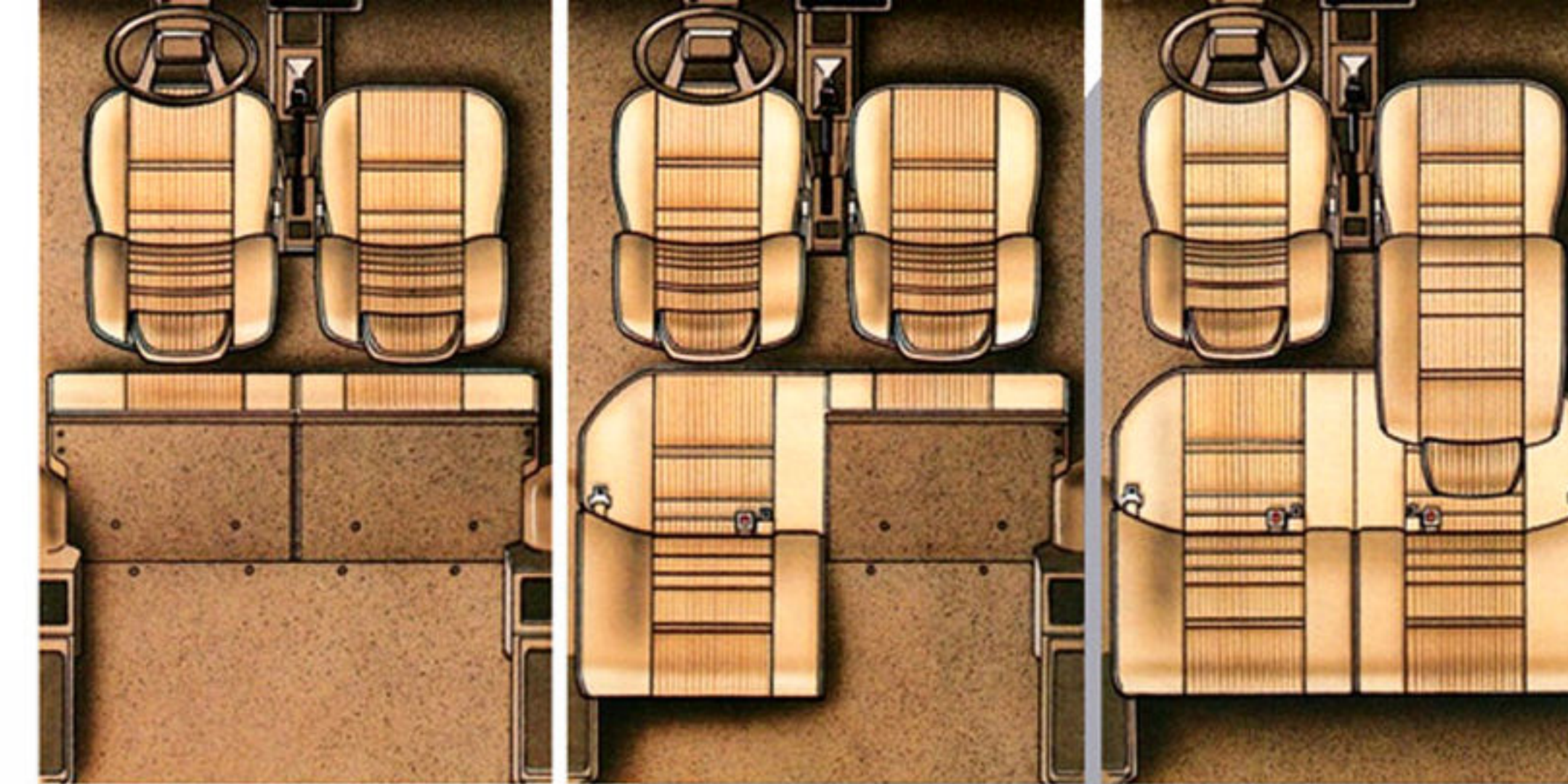
**A FLUID, FUNCTIONAL SHAPE.** The sleek appearance of Nova Hatchback contributes to the vehicle's aerodynamic efficiency.

**FINISHING TOUCHES, ALL STANDARD.** You might expect to pay extra for the following features. With Nova Hatchback, you don't have to.

- Full load floor carpeting protects your cargo and provides a luxurious interior appearance.

- When the backseat is upright, the removable security cover extends over the rear area to protect your valuables from prying eyes.

**EQUIPMENT PACKAGES.** Nova's Option Package ordering system makes it easy to equip this car to your personal tastes. Simply review the combinations of items offered and choose the package that's right for you. See page 16 for detailed information.



The split-back rear seat gives Nova Hatchback added flexibility.

Nova Hatchback shown with these options: Two-Tone paint in Medium Gray Metallic/Silver Metallic, CL package, aluminum wheels.



Optional Nova CL interior in Dark Blue.



# NOVA INTERIORS

Nova's interior is a fine example of applied ergonomics. Because people can't be reshaped to fit the car, Nova has been designed to accommodate five adults in spacious comfort, mile after mile. Nova's standard sedan and hatchback interiors include all the following items:

## STANDARD FEATURES.

- Expansive six-window styling with thin pillars.
- Cloth and vinyl seat trim in a choice of three colors.
- Low-back reclining front bucket seats with adjustable head restraints.
- Door-to-door cut-pile carpeting.
- Day/night inside rearview mirror.
- Convenient front door pockets.
- A molded fabric headliner that won't sag or wrinkle.
- Side and rear window defoggers.
- Tinted glass, all windows.

**NOVA CL INTERIOR.** The optional CL package transforms Nova into an especially well-appointed small sedan. The comprehensive CL option includes:

- Custom Cloth seat trim in Dark Blue, Brown or Medium Gray.
- Reclining front bucket seats with adjustable head restraints, adjustable lumbar support and vertical adjustment on the driver's seat.
- Full floor console with storage box, armrest and heat ducts for rear seat.
- Tilt steering column.
- Remote trunk lid opener.
- Remote fuel filler door opener.
- Right-side visor vanity mirror.
- Passenger-assist grips.
- Custom soft-feel steering wheel.



Standard Nova interior in Medium Gray.

## INTERIORS

Nova Cloth reclining front bucket seats with adjustable head restraints

Nova CL Custom Cloth reclining front bucket seats with adjustable head restraints, adjustable lumbar support and vertical adjustment on driver's seat

	Dark Blue	Brown	Medium Gray
Nova Cloth reclining front bucket seats with adjustable head restraints	■	■	■
Nova CL Custom Cloth reclining front bucket seats with adjustable head restraints, adjustable lumbar support and vertical adjustment on driver's seat	■	■	■



Standard Nova instrument panel in Gray.

# NOVA UP FRONT

The Nova instrument panel. It informs you with clear, communicative instrumentation. Entertains you with a choice of available music systems. It's styled to please you. And it puts everything right where you need it. You'll find:

### FROM THE DRIVER'S SEAT.

- A color-keyed instrument panel with easily readable analog gages under a glare-resistant hood.
- A convenient recessed instrument panel shelf.
- Temperature gage.
- Trip odometer.
- Low-fuel-warning light.
- Door-ajar-warning light.
- AM Delco radio (may be deleted for credit).
- Heater/defroster with five ventilation louvers, including two at rear passengers' feet, that circulate fresh air to all occupants.
- Rear window defogger.
- Side window defoggers.
- An angled nonslip platform that supplies a resting place for the driver's left foot.
- Side door storage pockets.
- Windshield wiper with mist cycle.

**OPTIONAL EQUIPMENT.** You may wish to make your Nova interior even more inviting by selecting one of the available Option Packages. Extra-cost interior equipment available as part of various packages includes:

- A choice of Delco music systems.
  - Air conditioning.
  - Power windows.
  - Power door locks.
  - Electronic speed control.
  - Outside mirrors, left-hand remote and right-hand manual.
- Informative and attractive. Chevy Nova is plenty of both.



Nova CL instrument panel in Blue with optional air conditioning, Delco AM/FM stereo radio with Seek and Scan, stereo cassette tape and clock, electronic speed control and intermittent windshield wipers.



Nova Sedan in Red.

# NOVA SEDAN

*Nova is a vehicle you'll be proud to put in your driveway. The standard Nova Sedan is a well-equipped car, with many features that are extra-cost items on other, more expensive automobiles.*

*Every standard Nova Sedan and standard Hatchback offers the following equipment at no extra charge.*

## **EXTERIOR/MECHANICAL.**

- All-season steel-belted radial ply tires. These all-season tires are designed to provide long wear and impressive traction under all conditions.
- Standard Cold Area Specifications. This equipment group includes a Delco Freedom II 60-amp-hour battery, heavy-duty washer/wiper system with a 2.6-quart washer tank capacity and a heavy-duty heater with rear-seat ducts in the console.
- Aerodynamic front valance panel and air dam.
- Protective body side moldings.
- 1.6 Liter engine with overhead cam design.

- 5-speed manual transmission with 4th and 5th gear overdrive.
- MacPherson-strut independent front suspension and MacPherson-strut independent rear suspension with gas-charged shocks.
- Locking fuel filler door.
- Tinted glass, all windows.

## **INTERIOR.**

- Low-back reclining front bucket seats with adjustable head restraints.
  - Room for five adults.
  - Delco AM radio (may be deleted for credit).
  - Convenient front door storage pockets.
  - Windshield wipers with mist cycle control.
  - Rear seat heater ducts.
  - Side window defoggers.
  - Rear window defogger.
- Quiet, comfortable, good-looking, easy to drive. That's what Nova is all about.*

# NOVA ENGINEERING

*Chevrolet Nova is a state-of-the-art automobile, built at New United Motor Manufacturing facilities in Fremont, California.*

*Since volume production began in early 1985, the Nova has consistently earned the highest praise from owners, the toughest critics of all. In fact, according to an early buyers survey, 95 out of 100 Nova buyers would recommend this car to a friend.*

*Nova engineering is proven, with millions of owner-driven miles behind it. Quality has been assessed by impartial auto publications, which have tested Nova and given it rave reviews.*

*The illustration on these pages offers examples of Nova's advanced technology and how that technology benefits you.*

## POWER TEAMS

Engine	Ordering Code	Engine Availability	Transmission Availability	
			5-Spd. Manual	3-Spd. Automatic
1.6 Liter 2-Bbl. L4*	RPO LC9	S	S	O

*S: Standard. O: Optional. \*Produced by Toyota Motor Corporation, Japan.*

Front drive provides improved traction and eliminates the space-robbing drive shaft, allowing a flat passenger floor.

Nova's standard 1.6 Liter four-cylinder engine features a high-efficiency overhead cam design, a weight-saving aluminum cylinder head and low internal friction. The results are impressive performance and quiet, refined operation. Horsepower is 74 at 5200 RPM; torque is 86 ft.-lbs. at 2800 RPM.

Routine maintenance checks are easily made, with the dipstick, spark plugs, oil filter and other components located for easy access.

Five-speed manual transmission with overdrive is standard. The 4th and 5th gear overdrive reduces engine RPM at highway speeds. High shift quality and well-chosen gear ratios make this a performance-oriented gearbox.

The optional 3-speed automatic transmission features a floor-mounted gear selector and computer-controlled torque converter clutch.

Rack-and-pinion steering is a design that provides direct, precise response and excellent road feel.

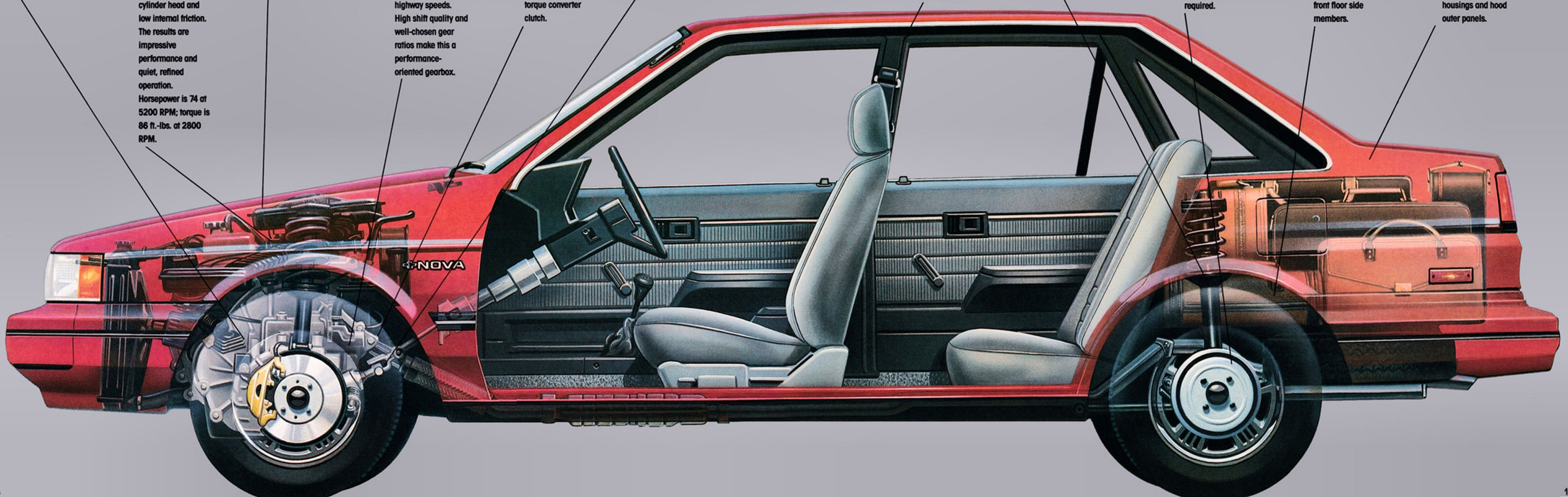
Nova uses many nonmetallic components that will never rust for bumpers, engine undercover and body side moldings.

A MacPherson strut at each front and rear wheel is part of Nova's fully independent suspension.

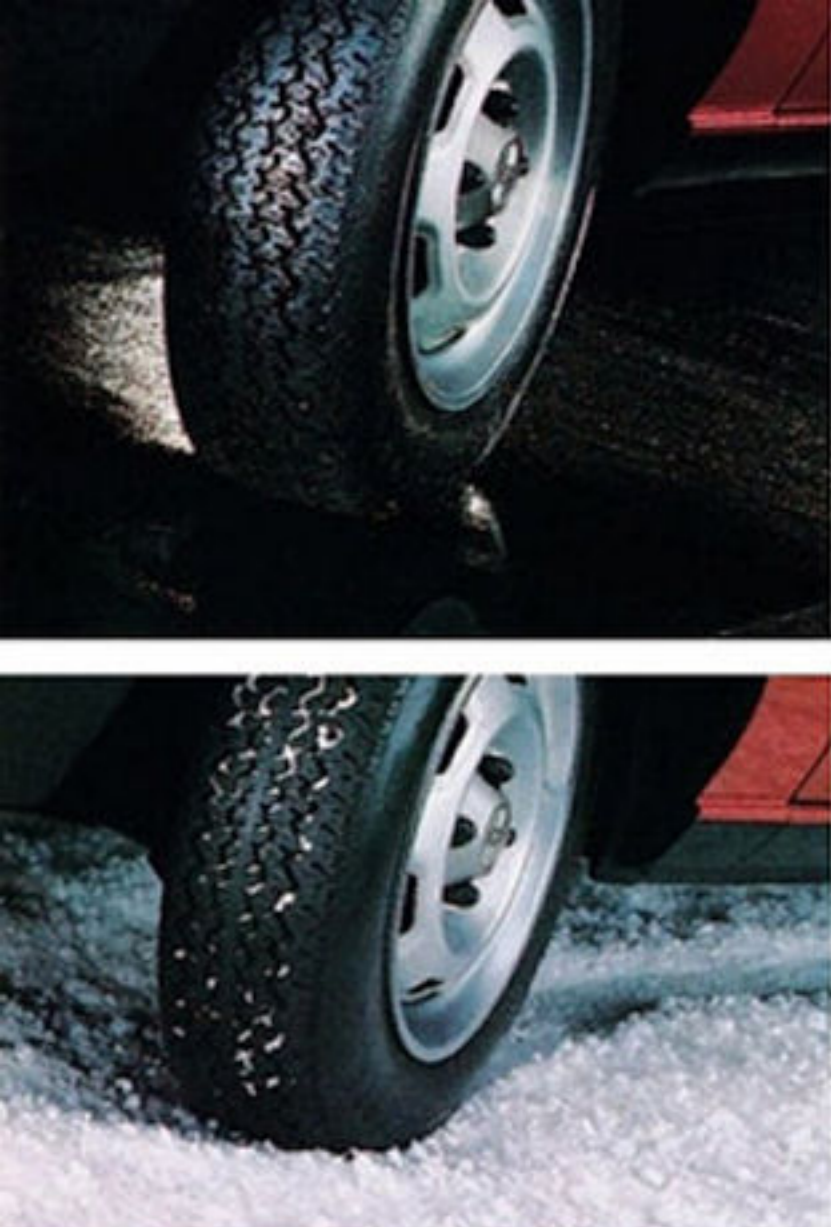
Power-assisted front disc/rear drum brakes feature audible sensors on the front discs that sound when pad replacement is required.

Polyvinyl chloride coatings, which have excellent anti-chipping qualities, have been utilized in front and rear wheelhousings and front floor side members.

Every Nova gets comprehensive corrosion protection with heat-treated galvanized steel on front fenders, doors, rockers, wheelhousings and hood outer panels.



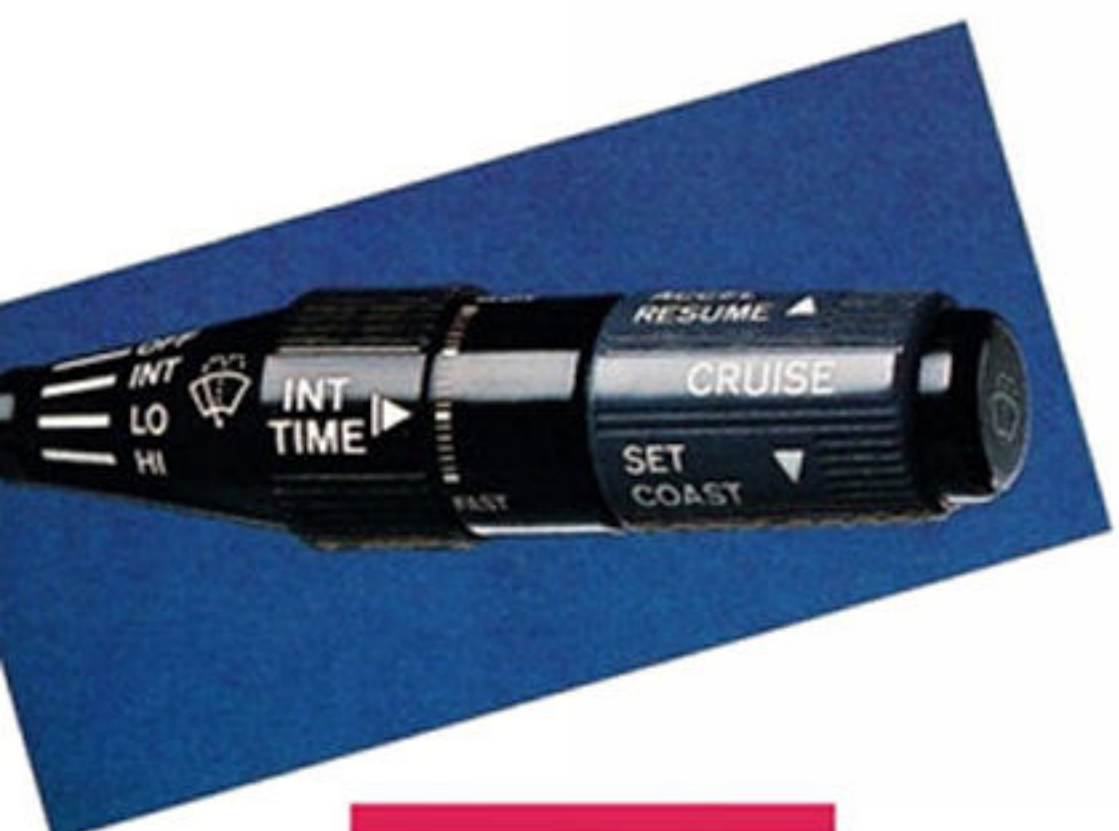




Nova's standard all-season steel-belted radial ply tires offer the confidence of snow tires and the long-wearing, quiet-riding characteristics of conventional radials.



Smooth-shifting, precise 5-speed manual overdrive transmission is standard.



Three-speed automatic transmission is optional.

Electronic speed control w/resume feature and variable-speed intermittent wiper control, optional.



Halogen headlamps are standard on Nova CL models.



Optional air conditioning with regular and economy modes.



Delco AM/FM ETR™ stereo radio with Seek and Scan, cassette tape and clock, optional.



Standard passenger-side convex mirror, (Nova CL only).



Convenient front door pockets are an added luxury you might not expect in an economical small sedan. They are standard on all Novas.

# NOVA

## FEATURES & OPTION PACKAGES

Nova simplifies the buying process with Option Packages. Just review the combinations of items offered and specify to your Chevrolet dealer which package is right for you.

To assist you in your choices, several popular items are pictured here. Check the Option Package list to determine which combinations include these items. Then, see your Chevrolet dealer for complete details and ordering information.

### OPTION PACKAGES

	Nova Sedan and Hatchback					Nova CL Sedan and Hatchback		
	1	2	3	4	5	6	7	8
<b>Transmission: 5-Speed Manual</b>	■		■					■
<b>Radio, AM</b>	■	■						■
<b>Tires, P155/80R-13 All-Season Steel-Belted Radial Ply Blackwall</b>	■	■	■	■	■			
<b>Transmission: Automatic Steering, Power</b>		■	■	■	■	■	■	■
<b>Air Conditioning Defogger, Rear Window: Electric (Credit)</b>			■			■		■
<b>Delco Radio, Electronically Tuned AM/FM Stereo with Seek and Scan and Digital Clock</b>				■	■			■
<b>CL Custom Feature Package*</b>						■	■	■
<b>Headlamps, Halogen: High and Low Beam Mirrors: Outside, LH Remote and RH Manual</b>						■	■	■
<b>Radio, Electronically Tuned AM/FM Stereo Radio with Seek and Scan, Stereo Cassette Tape and Digital Clock</b>						■	■	■
<b>Speed Control, Electronic: With Resume Speed Tires, P175/70R-13 All-Season, Steel-Belted Radial Ply Blackwall</b>						■	■	■
<b>Wheels, Aluminum</b>						■†	■†	■†
<b>Windshield Wiper System: Intermittent Rear Window Wiper/Washer†</b>						■	■	■
<b>Door Lock System, Power Power Windows</b>						■	■	■

\*Includes Custom Cloth Interior, Wide Body Side Moldings and Body Side Pin Stripes (NA with Two-Tone Paint), Bright Roof Drip and Door Belt Moldings, Black Painted Door Frames and Rocker Panels, Body-Color Bumpers, Console with Storage Box and Armrest, Steering Column with Tilt Feature, Remote Trunk Lid and Fuel Filler Door Opener, Luggage Area Lamp and Cut-Pile Carpet, Right-Side Visor Vanity Mirror, Passenger Assist Grips, Full Wheel Covers (except packages including aluminum wheels), Soft Steering Wheel and Driver's Seat with Lumbar Support and Vertical Adjustment.

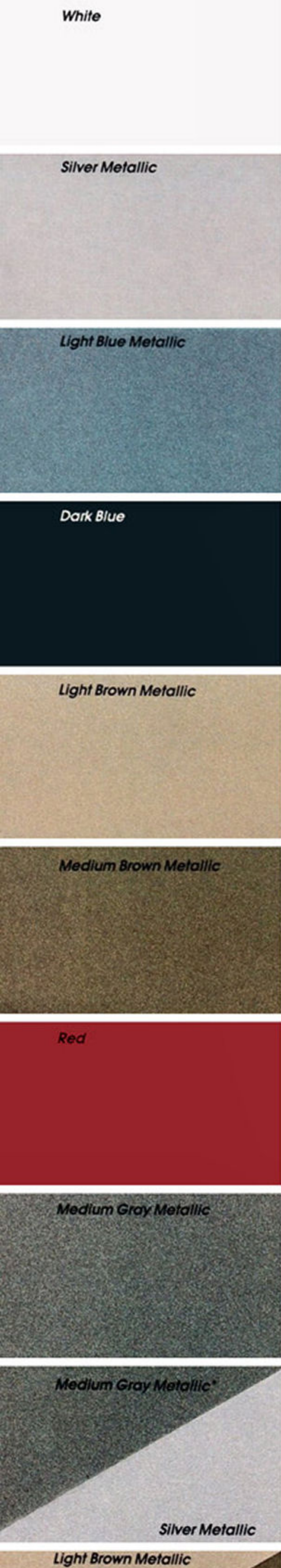
†Hatchback only.  
\*\*Notchback only.



Nova Sedan seats up to five and has plenty of room for gear. Shown: Nova CL Sedan with optional two-tone paint in Light Brown Metallic/Medium Brown Metallic.



Nova Hatchback provides 35.5 cu. ft. of luggage space. Shown: Nova Hatchback in Red with optional CL trim.



# NOVA FEATURES

## EXTERIOR FEATURES

	Nova Sedan and Hatch	Nova CL Sedan and Hatch
Antenna retracts into windshield pillar	S	S
Anti-chip paint on rocker panels	S	S
Black door frames and rocker panels	NA	S
Black grille	S	S
Black, remote patch-mounted OSRV mirror	S	S*
Black roof drip moldings	S	NA
Black bumpers	S	NA
Body-color bumpers	NA	S
Body side molding, narrow black	S	NA
Body side molding, wide black	NA	S
Body side stripe	NA	S†
Bright door belt moldings	NA	S
Bright roof drip moldings	NA	S
Flush-mounted windshield with black molding	S	S
Locking fuel filler door	S	NA
Quad rectangular headlamps	S	S
Remote fuel filler door opener	NA	S
Remote trunk lid opener	NA	S
Semi-concealed wipers	S	S
Styled steel wheels w/bright trim rings	S	NA
Tinted glass	S	S
Valance and air dam	S	S

## INTERIOR FEATURES

	Nova Sedan and Hatch	Nova CL Sedan and Hatch
All-velour upholstery	NA	S
Rear window defogger	S	S
Cloth and vinyl seat trim	S	NA
Color-keyed instrument panel	S	S
Cut-pile carpeting	S	S
Day/night inside rearview mirror	S	S
Front door pockets	S	S
Full-length console with heat ducts for rear seat	S	NA
Full-length console with storage box, cover, armrest and heat ducts for rear seat	NA	S
Hooded instrument cluster: Trip odometer, fuel and temperature gages, low-fuel-warning light, door-ajar-warning light	S	S
Low-back reclining front bucket seats with adjustable head restraints	S	S
Luggage area lamp (sedan only)	NA	S
Lumbar support and vertical adjustment on driver's seat	NA	S
Needle-punch luggage compartment carpet (sedan only)	NA	S
Security cover (hatch only)	S	S
Side window defoggers	S	S
Steering column switch for washer/wiper	S	S
Adjustable steering wheel	NA	S
Windshield wipers with mist cycle	S	S

## POWER TEAMS/CHASSIS/MECHANICAL FEATURES

	Nova Sedan and Hatch	Nova CL Sedan and Hatch
Delco Freedom II battery	S	S
Five-speed manual transmission	S	S
Front drive	S	S
Independent MacPherson-strut front suspension	S	S
Independent MacPherson-strut rear suspension with low-pressure gas-charged shocks	S	S
1.6 Liter OHC 4-cylinder engine**	S	S
All-season steel-belted radial ply blackwall tires	S	S
Power front disc/rear drum brake system	S	S
Rack-and-pinion steering	S	S

\*Dual outside mirrors. †NA with Two-Tone paint.  
\*\*Produced by Toyota Motor Corporation, Japan.  
S: Standard. NA: Not Available.

## FACTS

### DIMENSIONS

	Nova Sedan	Nova Hatchback
Wheelbase	95.7 in.	95.7 in.
Length (overall)	166.3 in.	166.3 in.
Width (overall)	64.4 in.	64.4 in.
Height (overall)	52.8 in.	52.8 in.
Tread — front	56.1 in.	56.1 in.
Tread — rear	55.3 in.	55.3 in.
Head room — front	37.9 in.	37.9 in.
Leg room — front	42.4 in.	42.4 in.
Shoulder room — front	53.8 in.	53.8 in.
Hip room — front	50.1 in.	50.1 in.
Hip room — rear	51.7 in.	47.6 in.
Head room — rear	36.5 in.	35.6 in.
Leg room — rear	32.0 in.	32.0 in.
Shoulder room — rear	53.8 in.	53.6 in.
Cargo space	13.8 cu. ft.	35.5 cu. ft.

### COLOR & TRIM SELECTIONS

Model	Seat Type	Interior Colors		
		Dark Blue	Brown	Med. Gray
Nova	CL Custom Cloth Bucket	■	■	■
	Cloth Bucket	■	■	■
Exterior Colors		Nova CL Stripe Color		
White	Med. Silver/Blue	■		
Silver Metallic	Med. Blue/Gray			■
Light Blue Metallic	Med. Silver/Blue	■		
Dark Blue	Med. Silver/Blue	■		
Light Brown Metallic	Med. Brown/Red		■	
Medium Brown Metallic	Lt. Brown/Red		■	
Red	Silver/Red			■
Medium Gray Metallic	Med. Silver/Red			■
Custom Two-Tone Colors*				
Medium Gray Metallic/Silver Metallic	Red/Med. Gray			■
Light Brown Metallic/Medium Brown Metallic	Red/Lt. Brown		■	

\*Available CL models only.

### SEAT STYLES



Cloth and vinyl reclining bucket seats with adjustable head restraints are standard.



Optional CL Custom Cloth reclining bucket seats with adjustable lumbar support and vertical adjustment on driver's seat.

## SAFETY FEATURES.

### OCCUPANT PROTECTION

■ Manual lap/shoulder safety belts for driver and right front passenger (driver's side includes visual and audible warning system)  
 ■ Manual lap safety belts at each rear-seat position  
 ■ Energy-absorbing steering column  
 ■ Energy-absorbing instrument panel  
 ■ Energy-absorbing front seat-back tops  
 ■ Laminated safety windshield glass and tempered safety side and rear window glass  
 ■ Safety interlocking door latches  
 ■ Passenger-guard inside door lock handles  
 ■ Safety armrests.  
 ■ Adjustable head restraints, driver and right front passenger.

### ACCIDENT AVOIDANCE

■ Side marker lights and reflectors  
 ■ Parking lamps that illuminate with headlamps  
 ■ Four-way hazard flasher  
 ■ Backup lights  
 ■ Center high-mounted stop lamp  
 ■ Directional signal control with lane-change feature  
 ■ Windshield defroster, washer and dual-speed wipers  
 ■ Inside rearview mirror with vinyl-bonded glass  
 ■ Outside left rearview mirror  
 ■ Brake system with dual master cylinder and warning light  
 ■ Starter safety switch  
 ■ Dual-action hood latch system  
 ■ Low-glare finish on instrument panel top, inside windshield moldings, wiper arms/blades, metallic steering wheel surfaces  
 ■ Illuminated heater and defroster controls  
 ■ Illuminated windshield and washer controls  
 ■ Tires with built-in tread-wear indicators.

**THEFT DETERRENCE**  
 ■ Audible reminder for ignition key removal  
 ■ Theft-deterrent steering column lock  
 ■ Visible vehicle identification number.

**IMPORTANT: A WORD ABOUT THIS CATALOG.** We have tried to make this catalog as comprehensive and factual as possible. However, since the time of printing, some of the information may have been updated. Also, some of the equipment shown or described throughout this catalog is available at extra cost. Your dealer has details and, before ordering, you should ask him to bring you up to date. The right is reserved to make changes at any time, without notice, in prices, colors, materials, equipment, specifications and models. Check with your Chevrolet dealer for complete information.

**A WORD ABOUT ASSEMBLY, COMPONENTS AND OPTIONAL EQUIPMENT IN THESE CHEVROLETS.** The Novas described in this catalog are assembled at facilities operated by New United Motor Manufacturing, Inc. These vehicles incorporate thousands of different components produced by New United Motor Manufacturing, Inc., General Motors, Toyota, and by various suppliers worldwide to New United Motor. From time to time during the manufacturing process, it may be necessary, in order to meet public demand for particular vehicles or equipment, or to meet federally mandated emissions, safety and fuel economy requirements, or for other reasons, to produce New United Motor products with different components or differently sourced components than initially scheduled. All such components have been approved for use in New United Motor Manufacturing, Inc., products and will provide the quality performance associated with the Chevrolet name.

With respect to extra-cost optional equipment, make certain you specify the type of equipment you desire on your vehicle when ordering it from your dealer. Some options may be unavailable when your car is built. Your dealer receives advice regarding current availability of options. You may ask your dealer for this information. GM also requests the dealer to advise you if an option you ordered is unavailable. We suggest that you verify that your car includes optional equipment you ordered or, if there are changes, that they are acceptable to you.

**GM PROTECTION PLAN.** The GM Protection Plan offers service protection in addition to that provided by GM's new-vehicle limited warranty. Ask your dealer about it. Coverage available only in U.S. and Canada.

**A WORD ABOUT UPDATED SERVICE INFORMATION.** Chevrolet regularly sends its dealers useful service bulletins about Chevrolet products. Chevrolet monitors product performance in the field. We then prepare bulletins for servicing our products better. Now you can get these bulletins, too. Ask your dealer. To get ordering information, call toll-free 1-800-551-4123.

**LET'S GET IT TOGETHER...BUCKLE UP.**

At your Chevy dealer's, financing or leasing your new Nova can be as easy as saying GMAC.



THE HEARTBEAT OF AMERICA. TODAY'S CHEVROLET.



Nova Sedan in Dark  
Blue with optional  
trim.

