

SAFARI TRIM LEVELS



Safari SLT Standard interior equipment includes six-way power driver's seat, AM/FM stereo with cassette and CD player, rear air conditioning and rear heat plus all the SLE features.



Safari SLE Standard equipment includes seating for eight, overhead console with multifunction LED readout, AM/FM stereo with cassette and more. See specifications.



Safari Conversion Van Conversion vans are supplied to GMC dealers by outside manufacturers independent of GMC. See page 24 for information on alterations and warranties.



Safari SLT



Safari SLE

Safari SLT Standard exterior equipment includes brushed aluminum wheels, remote keyless entry, dual electronic outside mirrors, roof-mounted luggage rack, dutch doors with rear window defogger plus all the SLE features. **Safari SLE** Standard exterior equipment includes lower body cladding, dual foldaway mirrors with electronic control, automatic daytime running lamps with automatic headlamps and more. See specifications on page 22 for more details.



Safari Conversion Van¹



Safari Cargo Van

Brushed Aluminum
With matching center cap,
standard on SLT models.



Chrome Appearance
With matching center cap,
standard on SLE models.

Styled Steel Wheel
With chrome center cap,
available on SL models.



Steel Wheel
With gray center cap,
standard on SL models.

Safari Conversion Van Conversion vans are supplied to GMC dealers by outside manufacturers independent of GMC. See page 24 for information on alterations and warranties. **Safari Cargo Van** With a side access height of 46.8," a rear access width of 57.2" and a load floor length of more than eight feet, the Safari cargo van offers as much as 170.4 cubic feet of cargo space and can accommodate even the bulkiest cargo with relative ease.

Wheel Styles With a wide choice of wheels from which to select, you can tailor the look of your Safari to match the exterior appearance or your personal tastes.

¹Shown with conversion supplied by an independent supplier. See page 24 for information about alterations and warranties.

Color and Trim: Combinations



Solid Paint Treatment
Standard on all SL, SLE and SLT models.

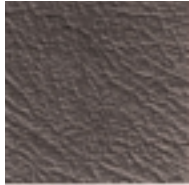


Two-Tone Paint Treatment
Available on all SLE models and on SLE and SLT models.

EXTERIOR COLORS, Solid	INTERIOR COLORS			TWO-TONE COLORS, Lower	INTERIOR COLORS		
	Medium Neutral	Medium Dark Pewter	Navy		Medium Neutral	Medium Dark Pewter	Navy
Cadet Blue Metallic	SL	SL	SL	with Dark Bronzemist Metallic with Light Autumnwood Metallic with Silvermist Metallic	SLT, SLE SLT, SLE		SLE SLE
Copper Metallic	SLT, SLE, SL	SLT, SLE, SL		with Dark Bronzemist Metallic with Light Autumnwood Metallic with Silvermist Metallic	SLT, SLE SLT, SLE	SLT, SLE	
Dark Bronzemist Metallic	SLT, SLE, SL	SLT, SLE, SL		with Light Autumnwood Metallic	SLT, SLE		
Forest Green Metallic	SL	SL		with Dark Bronzemist Metallic with Light Autumnwood Metallic with Silvermist Metallic	SLT, SLE	SLT, SLE	
Ivory White	SLT, SLE, SL	SLT, SLE, SL	SLE, SL	with Dark Bronzemist Metallic with Light Autumnwood Metallic with Silvermist Metallic	SLT, SLE SLT, SLE	SLT, SLE	SLE
Light Autumnwood Metallic	SLT, SLE, SL			with Dark Bronzemist Metallic with Silvermist Metallic	SLT, SLE SLT		
Light Toreador Red Metallic	SL	SL		with Dark Bronzemist Metallic with Light Autumnwood Metallic with Silvermist Metallic	SLT, SLE SLT, SLE	SLT, SLE	
Medium Dark Teal Metallic	SLT, SLE, SL	SLT, SLE, SL		with Dark Bronzemist Metallic with Light Autumnwood Metallic with Silvermist Metallic	SLT, SLE SLT, SLE		
Silvermist Metallic	SLT	SLT, SLE, SL	SLE, SL			SLT, SLE	
Storm Grey Metallic	SL	SL	SL	with Dark Bronzemist Metallic with Light Autumnwood Metallic with Silvermist Metallic	SLT, SLE SLT, SLE SLE	SLT, SLE SLT, SLE SLT, SLE	SLE

All colors are basecoat-clearcoat for high gloss and durable finish.

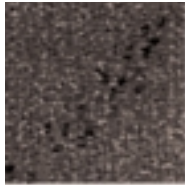
Color and Trim: Interior.Exterior



Medium Dark Pewter
Ultrasoft Leather



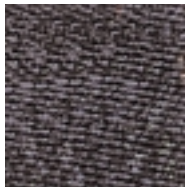
Medium Neutral
Ultrasoft Leather



Medium Dark Pewter
Deluxe Cloth



Medium Dark Pewter
Custom Cloth



Navy Custom Cloth



Medium Neutral
Deluxe Cloth



Cadet Blue Metallic



Copper Metallic



Dark Bronzemist Metallic



Forest Green Metallic



Ivory White



Light Autumnwood Metallic



Light Toreador Red Metallic



Medium Dark Teal Metallic



Silvermist Metallic



Storm Gray Metallic

Equipment: Interior

Interior				SL	SLE	SLT
S = Standard A = Available				SL	SLE	SLT
AIR BAGS						
Driver and front passenger ¹				S	S	S
AIR CONDITIONING						
Front (non-CFC refrigerant)				S	S	S
Front and rear (non-CFC refrigerant); includes 105-amp generator				A	A	S
AUDIO SYSTEMS						
AM/FM stereo, seek and scan, digital clock and 6-speaker system (UM7)				S		
AM/FM stereo with cassette, seek and scan, digital clock and 8-speaker system (UM6)				A	S	
AM/FM stereo with cassette, seek and scan, digital clock, auto reverse, automatic tone control, speed sensitive volume, Theftlock [®] security device and 8-speaker system (ULO)				A		
AM/FM stereo with compact disc player, seek and scan, digital clock, random select, automatic tone control, speed sensitive volume, Theftlock security device and 8-speaker system (UNO)				A	A	A
AM/FM stereo with cassette and compact disc player, seek and scan, digital clock, auto reverse, random select, automatic tone control, speed sensitive volume, Theftlock security device and 8-speaker system (UPO)				A	A	S
CARGO NET						
Located in the rear compartment area				A	S	S
CHILD SEAT TOP TETHER ANCHOR				S	S	S
CHILD SECURITY SLIDING DOOR LOCK						
Located at rear edge of sliding door				S	S	S
CIGARETTE LIGHTER				S	S	S
CONSOLE, OVERHEAD						
Includes four adjustable reading lamps, dome lamp, two storage compartments and garage door opener compartment, and LED displays of fuel economy, fuel used and remaining, elapsed time, outside temperature, trip meter and compass				A	S	S
CUPHOLDERS						
Two in front, one in center and two in rear				S	S	
Two in front, three in center and four in rear (8-passenger seating only)						S
Two in front, one in center and four in rear (7-passenger seating only)						A
DOOR PANELS						
Interior-colored Custom Cloth window sills, carpet lower and side reflectors				S	S	
Interior-colored Deluxe Cloth window sills, carpet lower and side reflectors						S
FLOOR COVERING						
Full-length, interior-colored carpet on wheel housings and floor				S	S	S
FLOOR MATS						
Front and rear interior-colored rubber floor mats for all seating positions				A	S	S
GAUGES						
Speedometer, odometer, trip odometer, voltmeter, fuel level, oil pressure and engine temperature gauges				S	S	S
HEADLAMP WARNING						
Lights-on warning tone				S	S	S
HEADLINER						
Interior-colored cloth				S	S	S
HEATER/DEFOGGER						
Includes rear heater ducts and side window defoggers				S	S	S
HEATER, REAR				A	A	S
HOMELINK TRANSMITTER²						
Includes programmable 3-channel universal remote for a compatible garage door opener, security lighting, estate gate, etc. (requires overhead console)					A	A
LIGHTING						
Illuminated entry with 20-second dome lamp delay				S	S	S
Three dome lamps (front, center and rear), stepwell lamps, glovebox lamp and ashtray lamp				S		
Four adjustable reading lamps (front), two adjustable reading lamps (center), one dome lamp (rear), stepwell lamps, glovebox lamp and ashtray lamp (includes overhead console)				A	S	S
MIRROR, REARVIEW						
With day and night feature				S	S	S
POWER DOOR LOCKS (includes driver lockout prevention)				A	S	S
POWER OUTLETS, DUAL						
Located on passenger side of engine cover				S	S	S
POWER OUTLET, REAR						
Located on driver side, near floor at rear of vehicle				S	S	S

Equipment: Interior.Mechanical

Interior (continued)							
S = Standard A = Available	SL	SLE	SLT		SL	SLE	SLT
POWER WINDOWS				SEATS, CENTER			
Includes express-down feature on driver window	A	S	S	Removable 3-passenger bench	S	S	
RADIO CONTROLS, CENTER SEAT				Removable 3-passenger bench with fold-down center console, including dual cupholders			S
Six function controls, dual headphone jacks and dual volume controls (ULO and UPO radios only)		A	A	Two reclining high-back bucket seats with dual armrests and integrated head restraints	A	A	
SAFETY BELTS, FRONT				Two reclining high-back bucket seats with dual armrests and adjustable head restraints			A
Height-adjustable outboard seating position lap and shoulder belts	S	S	S	SEATS, REAR			
SAFETY BELTS, CENTER AND REAR				Removable 3-passenger bench	S	S	
Outboard seating position lap and shoulder belts with child comfort guides, and center seating position lap belts	S	S	S	Removable 3-passenger bench with fold-down center console, including dual cupholders			S
SEAT FABRIC				SEATS, POWER (not available with vinyl seats)			
Custom Cloth	A	S		6-way power driver seat	A	A	S
Deluxe Cloth			S	6-way power driver and passenger seats	A	A	A
Ultrasoft leather seating areas			A	STEERING WHEEL			
SEATS, FRONT				Custom steering wheel in Graphite	S	S	
Reclining high-back bucket seats with integrated head restraints, adjustable driver's lumbar support, map pockets and armrest	S	S	S	Leather-wrapped sport steering wheel in Graphite		A	S
				Tilt capability and cruise control	A	S	S
				SUN VISORS			
				With driver- and passenger-side visor mirrors and extenders	S		
				TOP TETHER ANCHOR	S	S	S

Mechanical							
S = Standard A = Available	SL	SLE	SLT		SL	SLE	SLT
ALL-WHEEL DRIVE	A	A	A	EXHAUST			
BATTERY RUNDOWN PROTECTION	S	S	S	Aluminized stainless steel muffler and tailpipe	S	S	S
BRAKE/TRANSMISSION SHIFT INTERLOCK				ON-BOARD DIAGNOSTICS, SECOND GENERATION	S	S	S
Automatic transmission safety feature	S	S	S	PASSLOCK THEFT DETERRENT SYSTEM	S	S	S
BRAKES				POWER STEERING, VARIABLE POWER ASSIST	S	S	S
Four-wheel antilock braking system	S	S	S	RETAINED ACCESSORY POWER	S	S	S
COLD CLIMATE PACKAGE				STEERING COLUMN			
Includes engine block heater and antifreeze protection to -40 degrees Fahrenheit	A	A	A	Energy-absorbing steering column	S	S	S
COOLANT				TRAILERING EQUIPMENT			
Long-life engine coolant (up to 5-year/150,000-mile change interval) ³	S	S	S	6-wire harness	S	S	S
DIFFERENTIAL, LOCKING REAR	A	A	A	Heavy duty trailering package, including weight-distributing hitch and 8-wire harness	A	A	A
				TOW/HAUL FEATURE	S	S	S

¹Always use safety belts and proper child restraints, even with air bags. See the *Owner's Manual* for more safety information and refer to "A Note on Child Safety" on page 24.
²Operation of system requires the purchase of a receiver from HomeLink.

³Maintenance needs vary with different uses and driving conditions. See the *Owner's Manual*.

Equipment: Exterior . Specifications: Engine

Exterior							
S = Standard A = Available	SL	SLE	SLT		SL	SLE	SLT
BODYSIDE CLADDING				REMOTE KEYLESS ENTRY (with panic alarm)			
Located on lower portion of vehicle		S	S	Includes two remotes (requires power locks)	A	S	S
BODYSIDE MOLDING				RUNNING BOARDS		A	A
Gray body-side with bright insert	A			SIDE DOOR BEAMS			
BUMPER, FRONT				Driver, passenger and sliding door	S	S	S
Body-colored	S	S	S	TIRES, FOUR			
BUMPER, REAR				All-season blackwall steel-belted radial tires	S	S	S
Body-colored with black step pad	S	S	S	All-season white outlined letter steel-belted radial tires	A	A	A
CENTER HIGH-MOUNTED STOP LAMP	S	S	S	TIRE AND WHEEL, SPARE			
DAYTIME RUNNING LAMPS with automatic headlamp control	S	S	S	Compact size, located under floor at rear of vehicle	S	S	S
DOORS, REAR				WHEELS			
Cargo	S	S	A	Steel wheel with metal center cap	S		
Dutch with alternate liftgate door and rear washer/wiper	A	A	S	Styled Steel wheel	A		
GRILLES AND HEADLAMPS				Chrome appearance wheel	A	S	
Flash to pass headlamps	S	S	S	Brushed aluminum wheel	A	A	S
Gray grille and headlamp bezels with single sealed halogen headlamps	S			WINDOW EQUIPMENT			
Deluxe grille with composite halogen headlamps and bright trim		S	S	Glass, light-tinted Solar-Ray® on all windows	S		
LUGGAGE RACK				Glass, deep-tinted Solar-Ray, except windshield & front doors	A	S	S
Roof-mounted, black	A	S	S	Intermittent windshield wipers/washer	S	S	S
MIRRORS				Intermittent rear window wiper/washer (rear dutch door models only)	S	S	S
Dual foldaway, black	S			Rear window defogger (rear dutch door models only)	A	A	S
Dual foldaway with electronic control, black	A	S	S	Swing-out glass for side sliding door window and driver-side front quarter window	S		S
				Swing-out glass for side sliding door window, rear door windows and driver-side front quarter window		S	A

A NOTE ON CONVERSION VANS: Your GMC dealer can help you select from a wide range of conversion packages available for Safari, or can even help you design your own custom conversion, using GMC quality-approved conversion manufacturers. Ask your dealer about Safari models and packages that make it conversion-ready. See *An

important note about alterations and warranties" on page 24. For specification details and other equipment available, see your GMC dealer. Some of the available features listed here may be included in, or ordered only with, specific marketing packages or special packages.

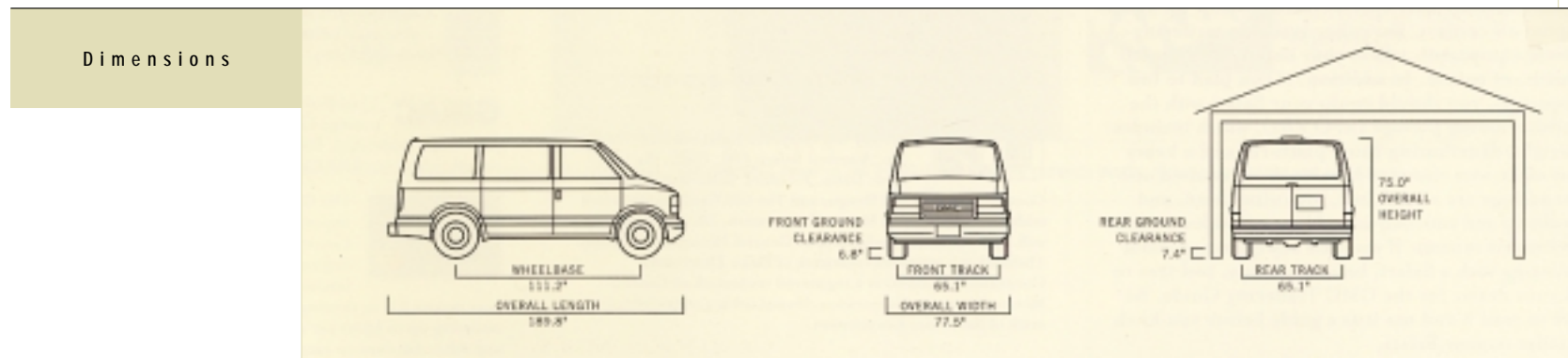
Engine			
ENGINE	Vortec 4300	COMPRESSION RATIO	9.2:1
FUEL TYPE	Gasoline	VALVE TRAIN	Overhead valve
CAPACITY/CONFIGURATION/CYLINDERS	4.3L V6	FUEL DELIVERY	Sequential fuel injection
ORDERING CODE	L35	SAE NET HORSEPOWER @ RPM	190 @ 4400
CUBIC INCH DISPLACEMENT	262	SAE NET TORQUE @ RPM (lb-ft)	250 @ 2800
BORE AND STROKE (mm)	101.60 x 88.39		

Specifications: Standard Tech Data . Trailering . Dimensions

Standard Technical Data	MODEL TYPE	Rear-Wheel Drive	All-Wheel Drive
	GROSS VEHICLE WEIGHT RATING (lbs)	5950	6100
	FRONT SUSPENSION	Independent coil springs	Independent torsion bars
	Axle capacity (lbs)	2800	3050
	Spring capacity (lbs)	2800	-
	Torsion-bar capacity (lbs)	-	3050
	REAR SUSPENSION	Single-stage steel spring	Single-stage steel spring
	Axle capacity (lbs)	3150	3150
	Spring capacity (lbs)	3150	3150
	BRAKES	Front disc/rear drum with 4-wheel antilock	Front disc/rear drum with 4-wheel antilock
	TRANSMISSION	Electronic 4-speed automatic with overdrive	Electronic 4-speed automatic with overdrive
	STEERING	Variable power assist	Variable power assist
	FUEL TANK CAPACITY	27 gallons	27 gallons
	DELCO® FREEDOM® BATTERY, CCA	600	600
ALTERNATOR	100 amps	100 amps	

Trailering Data	DRIVE TYPE	AXLE RATIOS	MAXIMUM TRAILER WEIGHT
	REAR-WHEEL DRIVE	3.23	5100
		3.42	5600
		3.73	6000
	ALL-WHEEL DRIVE	3.42	5300
		3.73	5800

Maximum trailer weight ratings are calculated assuming a standard equipped base vehicle plus driver. The weight of optional equipment, passengers, cargo and required trailering equipment will reduce the maximum trailer weight your truck can tow. Trailer tongue weight should be 10 to 15% of total loaded trailer weight. See the *GMC Trailering Guide* for further details.



A Note On Child Safety Children generally are safer if they are secured in a rear seat using the appropriate child safety seats and restraints, which is why General Motors recommends that child safety seats be properly secured in a vehicle's rear seat. Never place a rear-facing infant restraint in the front seat of any vehicle equipped with an active air bag. See the Owner's Manual and child safety seat instructions for more safety information. Always wear safety belts, even with air bags.

Safari Has Many Standard Safety Features, Including:

Occupant Protection Equipment. Lap/shoulder belt, rear outboard. Adjustable upper belt anchors, front outboard. Driver and front passenger air bags. Side door beams. Child security door locks, sliding side door. Child comfort guides, center and rear outboard shoulder belt. Safety belt cinch capability for child seats. Tether anchor.

Crash Avoidance Equipment. Four-wheel antilock brake system. Brake/transmission shift interlock. Automatic daytime running lamps. Door warning lights or reflectors. Halogen headlamps. Maintenance-free battery. Tires with built-in tread wear indicators. Audible brake lining wear indicators with front disc brakes. Side window defogger, front. Tinted glass windshield.

Theft Deterrence Equipment. Laser-etched VIN plate. Marked body parts. Passlock theft deterrent system. Steering column lock. Single two-sided key system. Remote hood release.

Trailer With Your Safari Safari is built strong and durable to handle the demands of towing. Certain equipment that prepares Safari for trailering is standard: variable power assist steering, power brakes, a large fuel tank, a 100-amp alternator, a front stabilizer bar, special transmission oil and engine oil coolers. For other available trailering-related equipment, talk to your dealer. You'll need a hitch, of course. In addition, if you plan to tow frequently, you should equip your Safari with the available towing package (RPO Z82), which includes a weight-distributing hitch platform and a heavy duty eight-wire electrical harness. Also required with this package are a hitch ball, mounting head, and equalizing and anti-sway assemblies—available through aftermarket sources. If you have any questions about trailering with a Safari, before you buy, feel free to ask your dealer for the GMC Trailering Guide. Be sure to read it and use it as a guide before you hitch a trailer to your Safari.

A Word About This Brochure We have tried to make this brochure comprehensive and factual. We reserve the right, however, to make changes at any time and without notice, in prices, colors, materials, equipment, specifications, models and availability. Information may have been updated since the time of printing. Please check with your GMC dealer for complete details. GMC reserves the right to lengthen or shorten the model year for any product for any reason, or to start and end model years at different times.

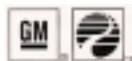
Assembly GMC models and their components are assembled or produced by different operating units of General Motors, its subsidiaries or suppliers to General Motors worldwide. We sometimes find it necessary to produce GMC models with different or differently sourced components than originally scheduled. Since some options may be unavailable when your vehicle is assembled, we suggest you verify that your vehicle includes the equipment you ordered, or, if there are changes, that they are acceptable to you. GMC regularly sends its dealers useful GMC product service bulletins. To obtain these bulletins, ask your dealer or call 1-800-GMC-8782.

Engines GMC vehicles are equipped with engines produced by different operating units of General Motors, its subsidiaries or suppliers to General Motors worldwide.

On The Web See more of Safari on our website: www.safari.gmc.com

- More photos and information
- Hot links to related subjects and features
- Spec out your own vehicle
- Convenient dealer locator
- Pricing guide

Or call 1-888-4A SAFARI (1-888-427-2327).



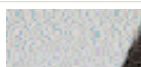
© 1999 GM Corp. All rights reserved. Buckle Up, America! Safari, GM, GMC, the GMC logo, Delco, Freedom, Solar-Ray, Passlock, Commitment Plus and Design, and The GM Card are registered trademarks of General Motors Corporation. Do one thing. Do it well. and Vortec are trademarks of General Motors Corporation. Theftlock is a registered trademark of Delco Electronics Corporation. GMAC is a registered trademark of General Motors Acceptance Corporation. HomeLink is a registered trademark of the Prince Corporation.



GMC recognizes the importance of mobility to everyone's life and therefore offers financial assistance to persons with disabilities through the General Motors Mobility Program. This program can provide up to \$1000 reimbursement toward the cost of aftermarket mobility adaptive equipment for drivers or passengers when installed or reinstalled on any eligible purchased or leased new GM vehicle. For details and free resource information, call 1-800-323-9935 (TTY users: 1-800-833-9935).

1. Roadside Assistance

GMC is proud to be a partner in conservation with The Nature Conservancy, an organization dedicated to protecting the diversity of life on Earth. GMC contributes both money and trucks to support this worthwhile organization.



GMC backs your new vehicle with its no deductible, Bumper to Bumper limited warranty. The entire vehicle is warranted for repairs, including parts and labor, to correct problems in materials or workmanship, for three years or 36,000 miles, whichever comes first (except normal maintenance). The warranty covers towing to the nearest GMC dealership, and there is no deductible for warranty repairs during the warranty period. The warranty transfers automatically with vehicle ownership during the warranty period. GMCs are designed and built to resist corrosion. All body sheet-metal components are warranted against rust-through corrosion for six years or 100,000 miles, whichever comes first. Application of additional rust-inhibiting materials is not required, and none is recommended. See your GMC dealer for terms and conditions of these limited warranties. *An important note about alterations and warranties:* Installations or alterations to the original equipment vehicle (or chassis) as distributed by General Motors are not covered by the General Motors New Vehicle Limited Warranty. The special body company, assembler, equipment installer or upfitter is solely responsible for warranties on the body or equipment and any alterations (or any effect of the alterations) to any of the parts, components, systems or assemblies installed by GM. General Motors is not responsible for the safety or quality of design features, materials or workmanship of any alterations by such suppliers.



GMC supports the National Safe Kids Campaign,[®] a grassroots program dedicated to promoting child passenger safety.



Qualified approved customers can conveniently arrange GMAC[®] leasing and financing right at your GMC dealership. For more information, see your dealer or call 1-800-32-SMART.



The GM MasterCard gives you an important financial advantage, GM Card Earnings. GM Card Earnings can be used to purchase or lease a new GM car or truck (excludes Saturn, Saab, EVI). Card members receive 5% in earnings on any GM Card purchase — accumulating up to \$500 per account year. That's over and above any other discount or incentive. Call 1-800-8GM-CARD.

COMMITMENT PLUS

From the owner orientation—and full tank of gas—you receive when you take possession of your Safari to the 24-hour Roadside Assistance, Courtesy Transportation and Travel Benefits, Commitment Plus is a portfolio of owner privileges that lasts throughout your warranty. For expert product information, Roadside Assistance or other services, call 1-800-GMC-8782.

COMMITMENT
PLUS

GMC Orientation

- Thorough introduction to your Safari
- Complimentary full tank of fuel



Courtesy Transportation¹

- Free one-way shuttle (up to 10 miles away)
- Reimbursement for alternate transportation (for overnight service)

PREMIUM Roadside Assistance

- Warranty towing, flat tire change, jumpstarts and more
- Available around the clock



Travel Benefits

- Trip routing service
- Reimbursement for trip interruption (for warranty repairs)²

¹ Discuss the details with your dealer when making an appointment. ² See your GMC dealer or call 1-800-GMC-8782 for complete details, including conditions and restrictions.