

Nash Presents the World's Most Modern Cars



*The New **Nash** Airflytes*

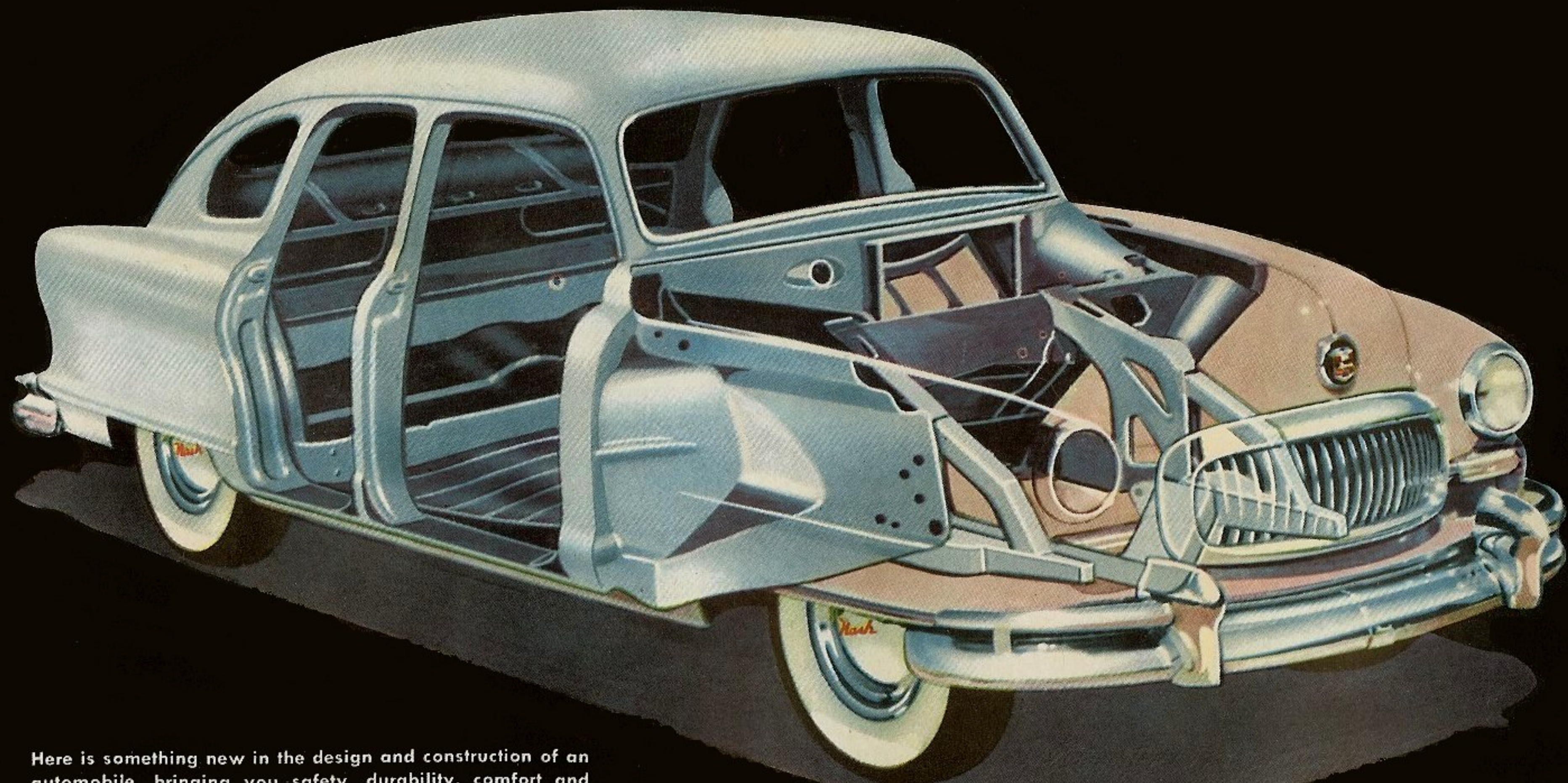
★ THE AMBASSADOR

★ THE STATESMAN

★ THE RAMBLER

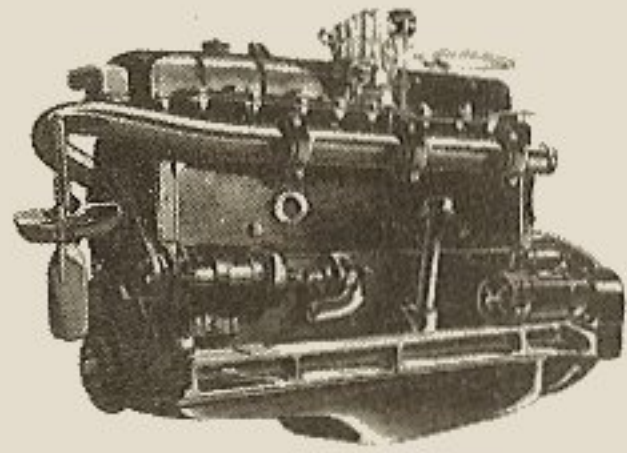
PRICED FOR EVERYONE TO OWN

World's Only Cars of Airflyte Construction...



Here is something new in the design and construction of an automobile, bringing you safety, durability, comfort and performance you never enjoyed before in a car. Here the vastly greater strength of welding replaces old-style bolted construction. Never in your Nash will you hear the usual squeaks and rattles of separate body and frame. Never will you have to spend a penny for the usual body tightening you expect with conventional cars.

Set Amazing New Records for Speed, Endurance, Economy



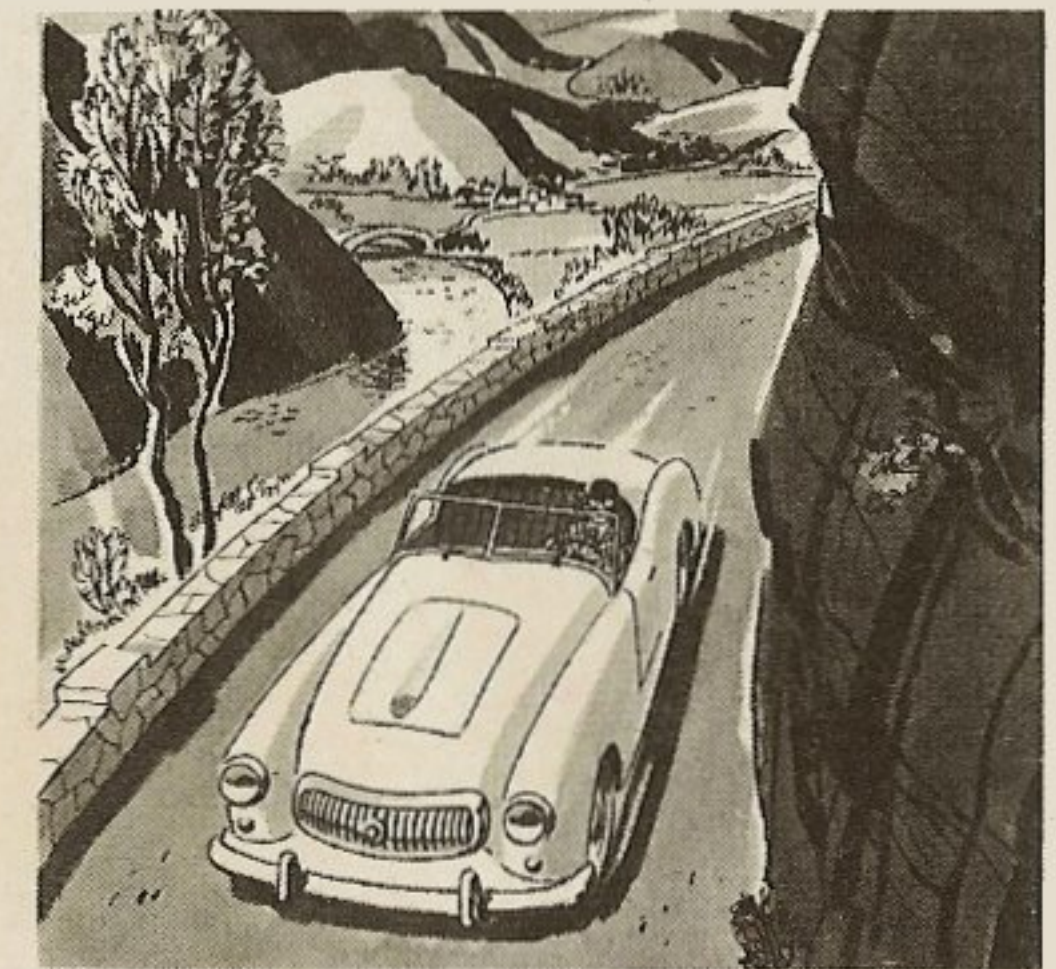
Far advanced over ordinary construction, in your Nash the entire body and frame, girders, pillars, floor and roof—even the heavy steel “hide” of the car itself—are inseparably welded into a single, super-strong, rattleproof unit that is more than twice as rigid. Because Airflyte Construction stays new years longer, it makes Nash your best bet for the years ahead.

With new aerodynamic design, with new super-rigid strength, Nash has coupled new efficiency in power to write a new record book on performance. In the past few months these revolutionary Nash Airflytes have piled up a record of wins on three continents . . . providing unparalleled proof of speed, endurance and economy of the Ambassador with Jetfire engine and the Statesman and Rambler with Flying Scot engine.

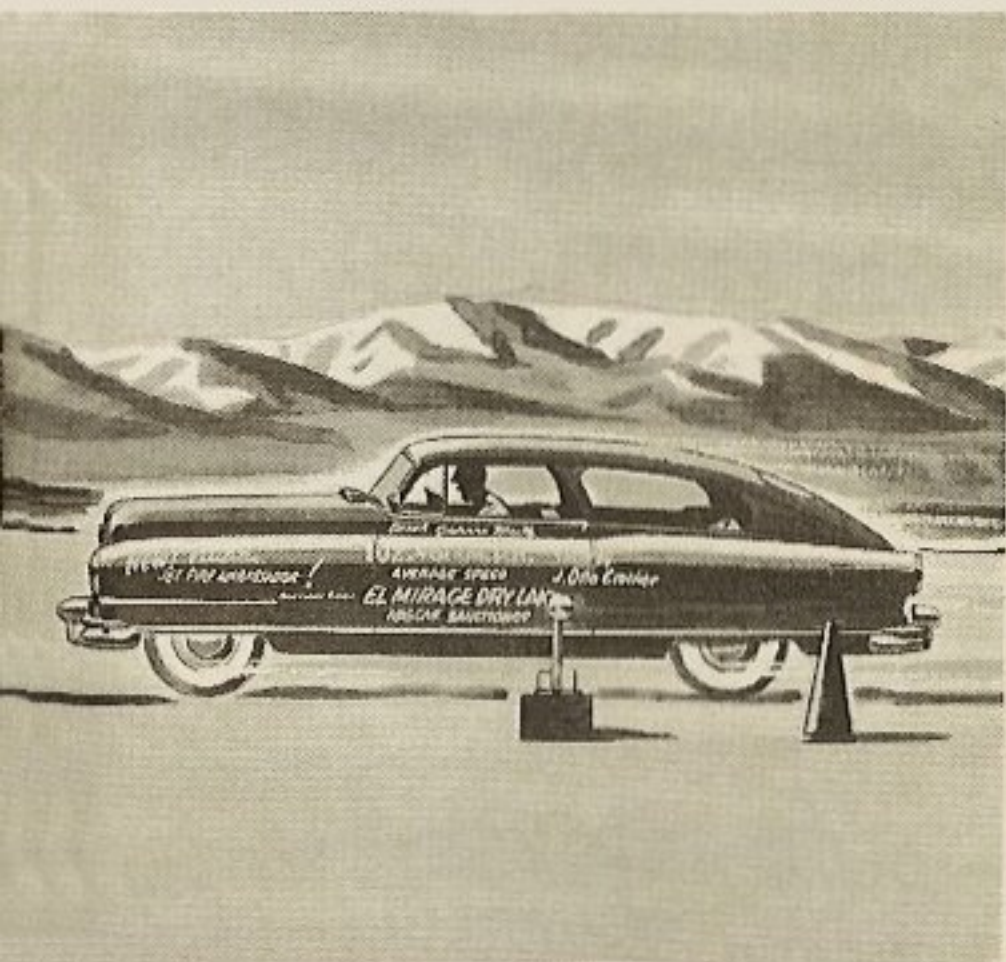
These new Nash cars challenge *you* to take the wheel . . . to compare them for power, for get-away, for smoothness, against other cars at any price.



Smashing All Records for gasoline mileage in the 1951 Mobilgas Economy Run, the Nash Rambler Convertible Sedan with overdrive set a new all-time mark of 31.05 miles to the gallon. The Statesman—26.12 M.P.G. and the Ambassador—25.9 M.P.G.



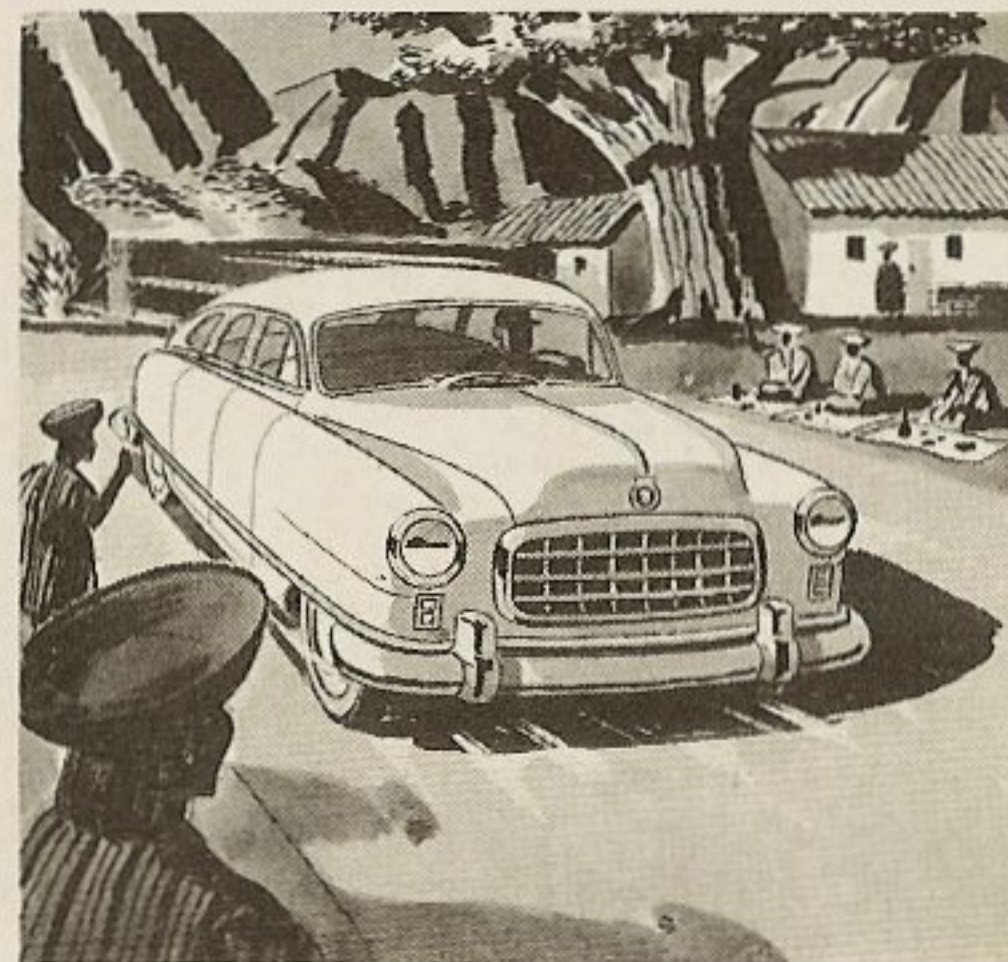
Sensation of Europe and America is the new Nash-Healey, a sports car that has matched the performance of the world's most expensive racing cars. It is powered by the Nash Ambassador Jetfire Engine, equipped with dual carburetors.



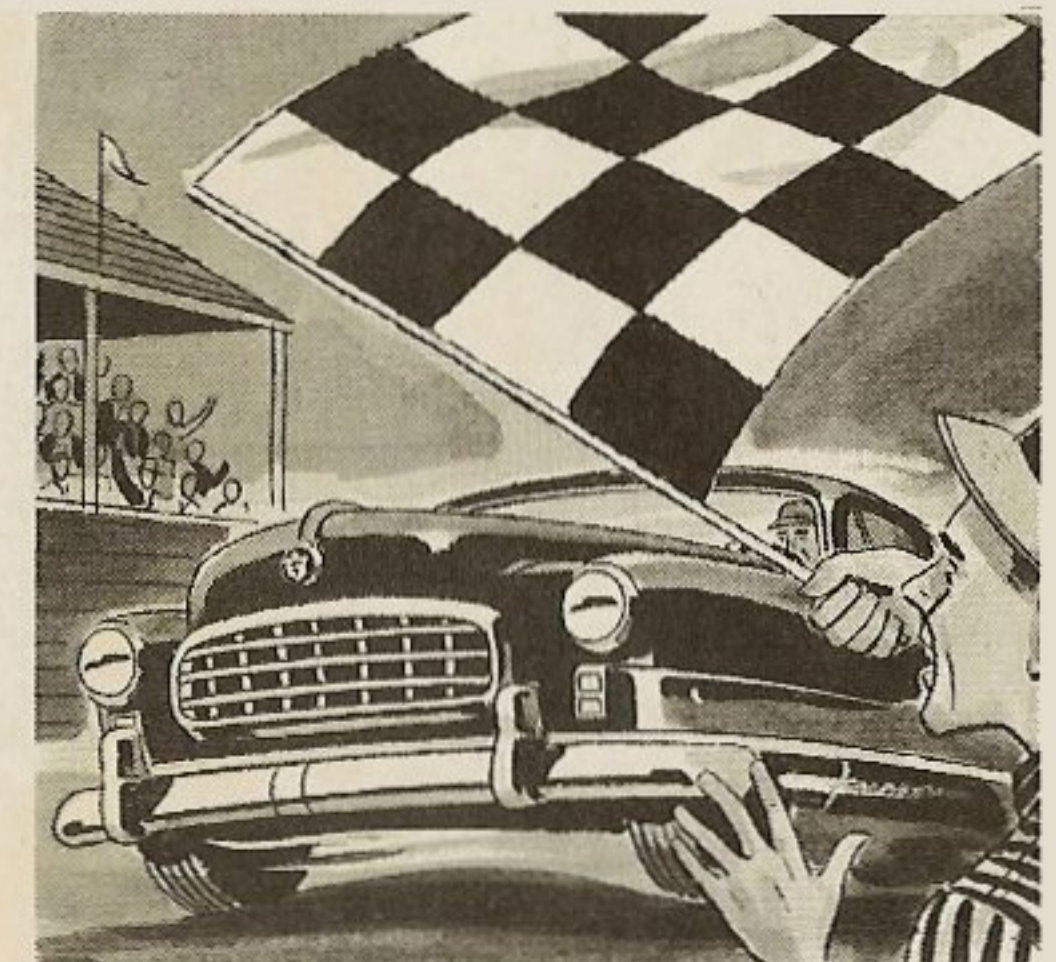
Nash Sets a New Speed Record at El Mirage Dry Lake for the fastest mile by a stock car—an actual, electronically-timed 102.465 MPH! No other car engines consistently produce so much power for the fuel consumed.



1st in Grand National Circuit 150-mile race was won by a stock model 1951 Nash Ambassador. Nash leadership in high-compression, valve-in-head engines and temperature-controlled manifold-ing set the power-pattern for modern engines.



Nash Wins Again . . . over 38 American and foreign cars in the Peruvian Road Race—1830 miles of the world's toughest going, over desert and the Andes Mountains, with the famous Nash Ambassador Jetfire engine.



It's a New Record for the half-mile set in dirt track competition by Herschel Buchanan. His amazing record of “firsts” against all comers made him and his Nash Ambassador the Stock Car Champions of 1950, awarded by the I.M.C.A.

No Other Car at any Price Gives



First Airliner Reclining Seat in a car. No car feature ever made a long trip so short. At lever touch, ease back as far as you like. Relax, you'll be lulled to sleep by the softest of rides.



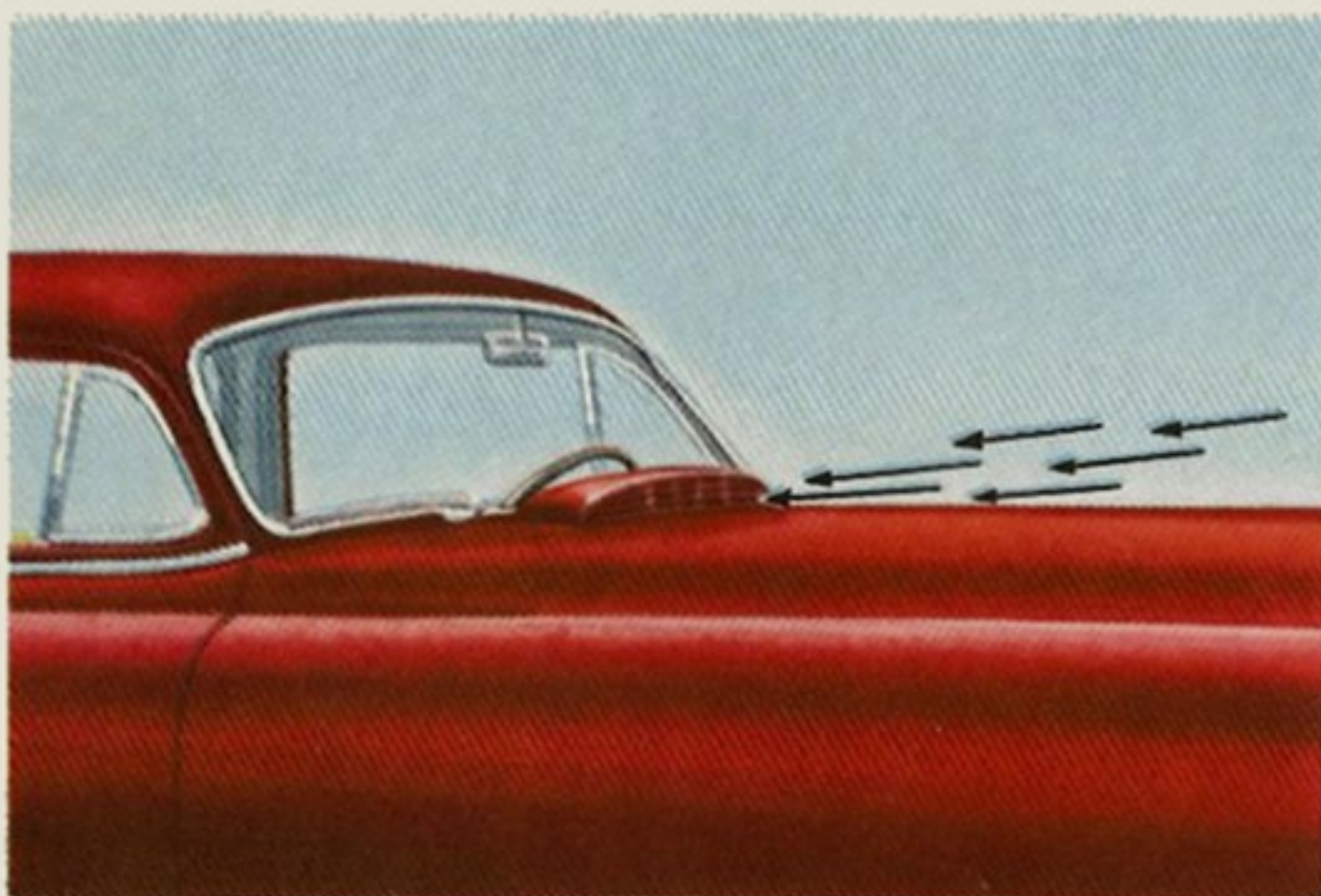
Only Nash has sealed-in intake manifold that insures positive engine temperature control in all weather for perfect combustion—and, with exclusive Uniflo-Jet Carburetion, you get far better mileage.



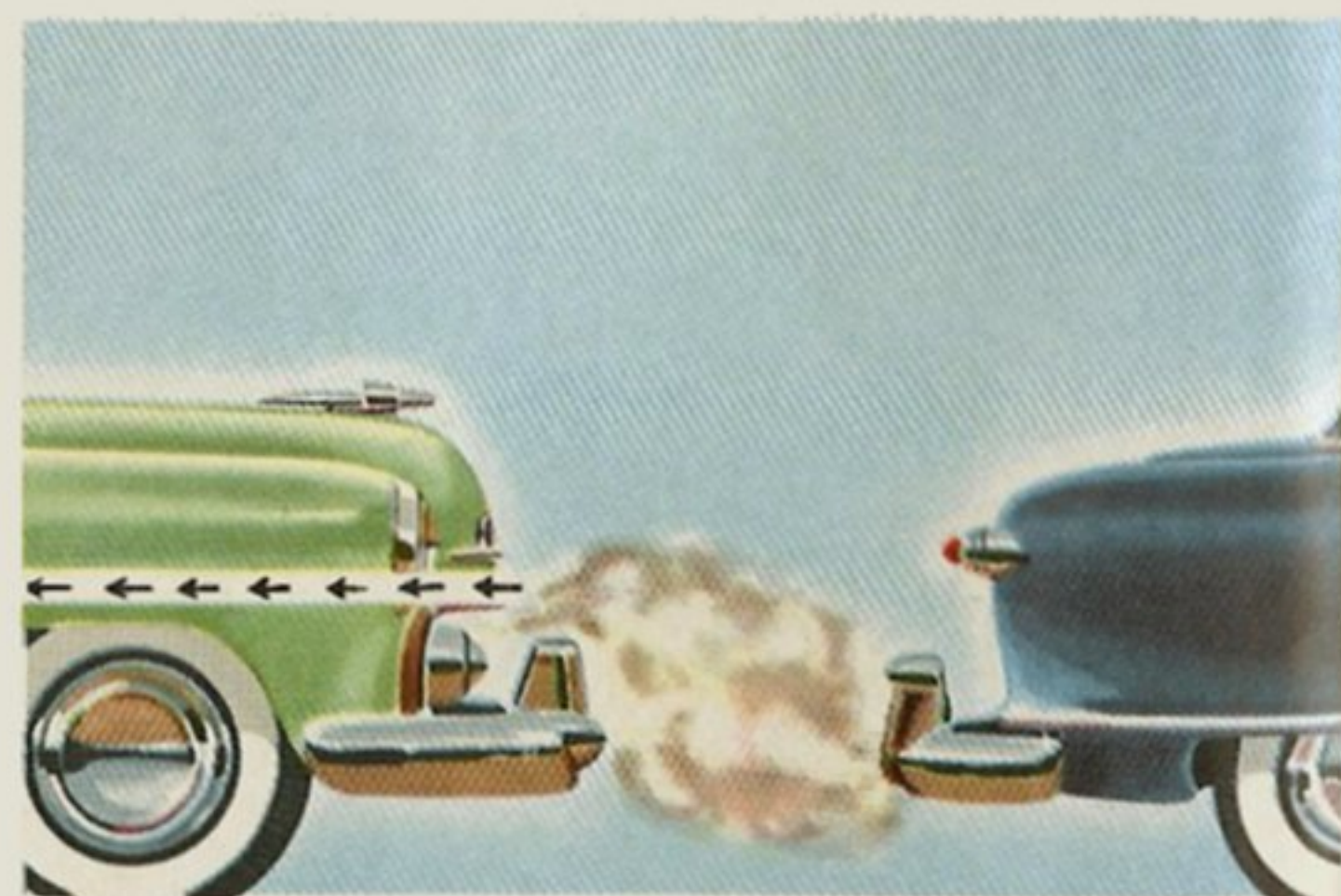
Best in Aerodynamic Beauty as proved by University of Wichita wind-tunnel tests. More perfect streamlining boosts economy and speed—reduces wind-noise, wind-wander.



Even the Air will be New with Nash Weather Eye Conditioned Air System—admittedly the world's best. Enjoy pressurized heating and ventilation, thermostatically controlled.



Why Nash is Safest in all weather extremes. Unlike most cars, Nash takes in the fresh, cleaner air up near the windshield—not down low where it would suck in the dangerous carbon-monoxide exhaust of



the car ahead. In your Nash, incoming air is filtered—cooler on your feet in summer because it never goes near the hot engine—safer and fresher in winter. No drafts or fogging.

You these Priceless Airflyte Features

Put the yardstick of value to the new Nash Airflyte. Compare it, feature by feature, with any other car you have known. You'll agree—it's 'way out front in all things that count most in an automobile.

Where but in Nash can you enjoy an Airliner Reclining Seat that adjusts to five comfortable positions to give the height of luxury on long trips? Look where you will—Nash and Nash alone affords the healthful comfort of Weather Eye Conditioned Air—fresh air that's filtered, de-humidified, warmed and circulated throughout the car. Stretch out and relax in the spacious interior. There's legroom and elbow room galore . . . even Twin Beds when you want them. And plenty of space for the whole family's luggage in the huge trunk compartment.

In what other car, but Nash, can you find so many thoughtful appointments—so many comfort and pleasure features engineered right into the car?



Your Private Sleeping Car can be made ready in seconds, without disturbing luggage. It's another Nash exclusive, standard at no extra cost on 2-door sedans—optional on 4-door sedans.



Twin Beds! See how seats drop back at the flip of a latch to become wide, soft Twin Beds. Right front seat can be lowered separately to make a wonderfully convenient daytime couch.



An Outboard Motor is "swallowed up" in this huge luggage compartment actually twice as spacious as that in some cars. Plenty of room for your sporting gear, family baggage.



Sky-Lounge Interior with curved, one-piece windshield on all models—the passenger compartment is a full foot longer than most—the front seat is sofa-wide (63 inches) and pillow-soft.



Greater Safety for your family with Airflyte Construction, proved twice as rigid by actual torsion tests. There's maximum protection of steel girders surrounding passengers.

New Developments in Springing and



Construction Give You the Smoothest Ride Known

At last the engineer's ideal has been achieved in an automobile—and what that means in comfort is something you can discover only by riding in a Nash.

For engineers have long known that the more rigid a car can be built—the more resistant it is to twisting—the smoother it can ride. When a car is stronger and more rigid, the springs can be softer, tuned in more perfect balance.

There is the Nash secret. With Airflyte Construction that is more than twice as rigid—Nash can use the softest springs on any car—with all four springs correctly balanced for the smoothest ride the automotive industry has yet produced.

Try it. Race right over rutted roads. Only your eyes will tell you that you are passing over bumps. No jiggle reaches your steering hand. No rattle of body bolts, no roar of rushing wind disturbs you. Not even chuckholes swerve the Airflyte from its level course.

You've never felt a ride like this before. You can't in any other car—because no other is built with Airflyte Construction, the reason for the smoothest ride known.



Nash Wins Modern Design Award for Rambler's unique spring suspension which reduces unsprung weight. The Ramblers' M D A Springing gives big car riding ease.



Only with Airflyte Construction can full use be made of coil-springing on all four wheels. The Nash Statesman is the lowest price car available today with this comfort feature.



Rambler Independent front wheel suspension steps over bumps with ease. With Airflyte Construction, this Station Wagon is lastingly free from body-bolt squeaks and rattles.



LUXURIOUS AMBASSADOR CUSTOM 2-DOOR SEDAN

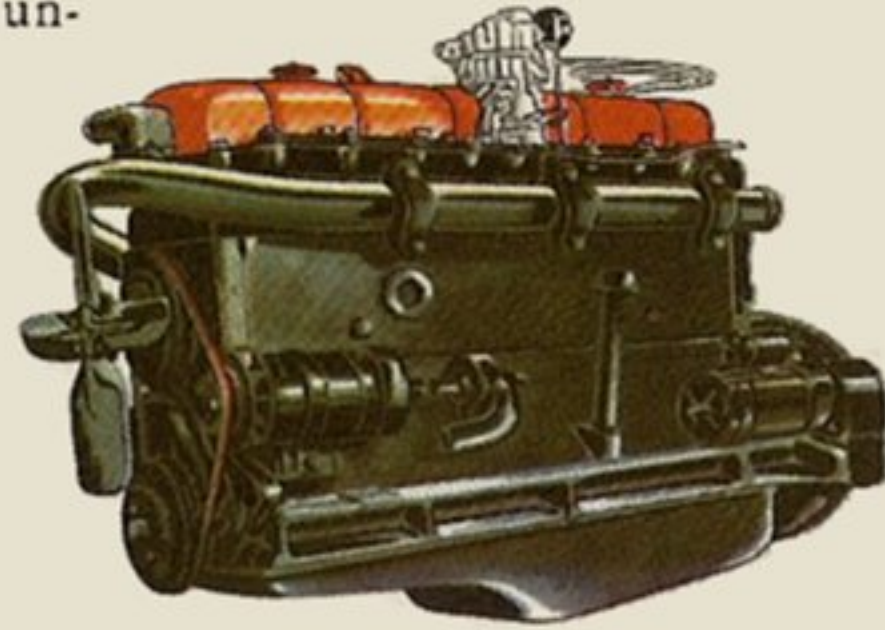
The Most Modern of America's Finest Cars

The Distinguished Ambassador

Drive this lordly master of the highways—the only American car powered by the famous Jet-Fire engine that challenges all others on performance—that has won race after race—set record after record for speed, endurance, mountain climbing and economy—against the best that three continents can offer.

Note the dynamic new front with jet-plane-styled oval air intake . . . the massive new Guard-Rail bumpers protecting sides as well as front and rear . . . the thrilling sweep of streamlined beauty . . . the new Sky-Flow rear fenders . . . the racing tear-drop tail. And the Ambassador's one-piece, curved, broad-vision windshield provides a safer, unobstructed view of the road ahead.

with Jetfire



Compare the new Ambassador with America's other finest cars for size, for room, for luxury of appointments, for riding comfort. *Then consider this:* The Nash Ambassador, even in finest Custom models with foam-sponge cushions upholstered in fine needle point, costs you a good thousand dollars less than any comparable car.

Available with Hydra-Matic Drive

For the ultimate in driving enjoyment, try the unequalled combination of Jet-Fire and Hydra-Matic Drive—the greatest performance team ever developed. You also have the option of Automatic Overdrive or Standard Synchronesh Transmission.



AMBASSADOR CUSTOM 2-DOOR SEDAN

Power



AMBASSADOR SUPER 4-DOOR SEDAN

America's Most Economical Big Car

The Nash Statesman

**NOW AVAILABLE WITH
HYDRA-MATIC DRIVE**



STATESMAN CUSTOM 2-DOOR SEDAN

Meet the big Statesman—newest and finest to bear the name that won Nash world-wide fame for economy and value.

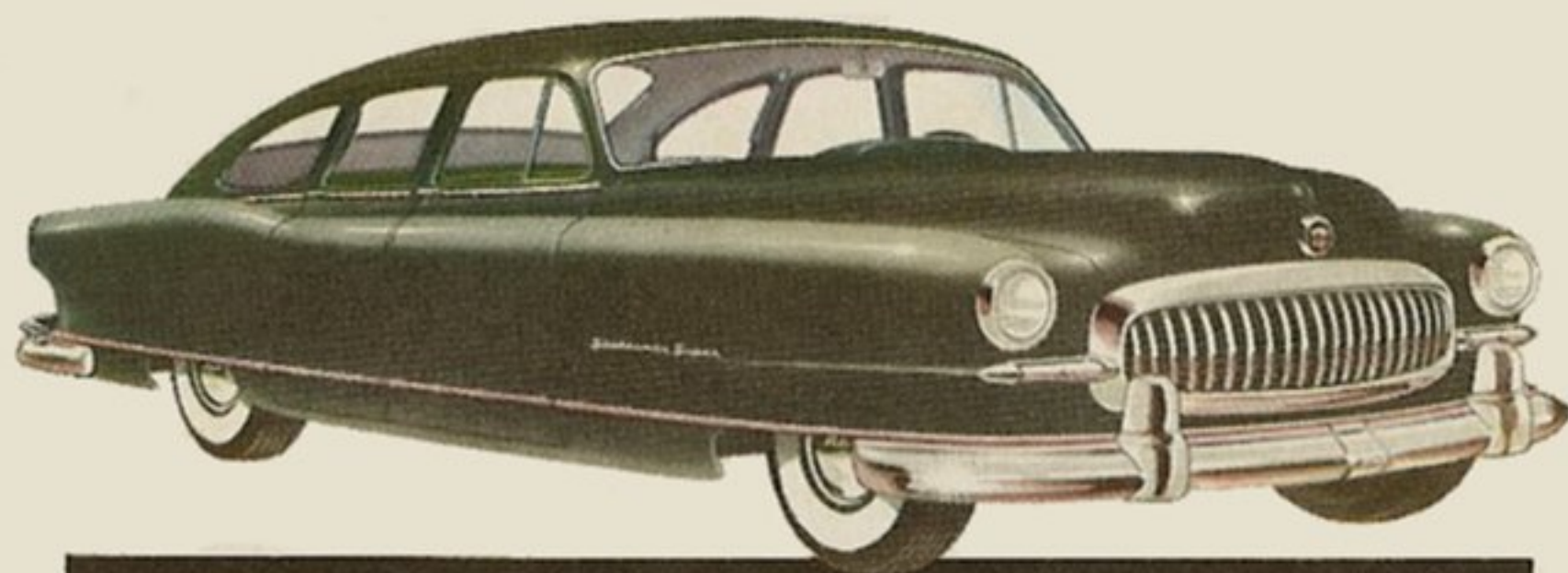
Step inside. Measure the room. The front seat is 63 inches wide.

This interior is a full 9½ feet long, a foot longer than most.

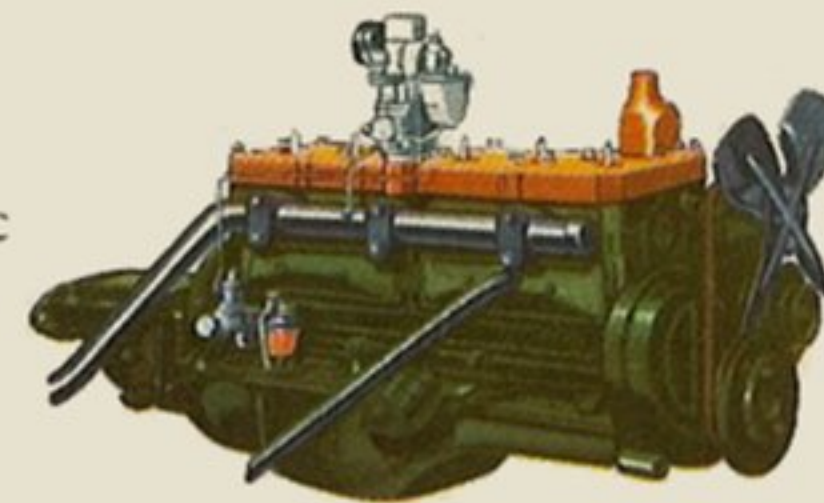
Yet this big, roomy car can deliver more than 25 miles to the gallon at average highway speed.

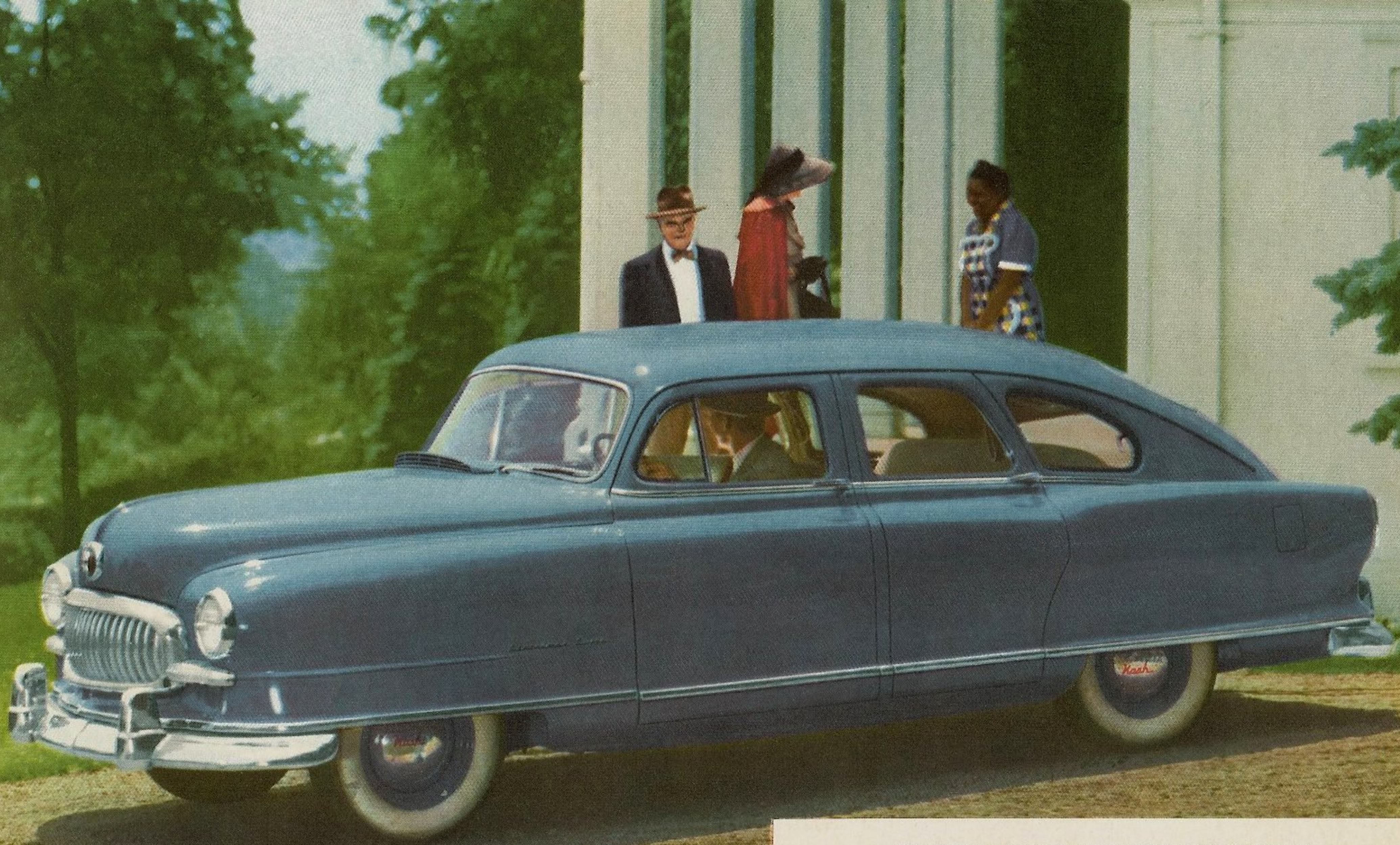
The Nash Statesman is the lowest-price car to give you the wonderfully smooth, cushioned ride of coil springing on all four wheels, the safety and road-hugging stability of Airflyte Construction, Twin Beds and a host of optional features including Airliner Reclining Seat and Weather Eye Conditioned Air System, not available in any car but Nash.

Then there's Super-Compression Flying Scot power with the added thrill of Hydra-Matic Drive, Automatic Overdrive or Standard Synchronesh Transmission available in the Nash Statesman models.



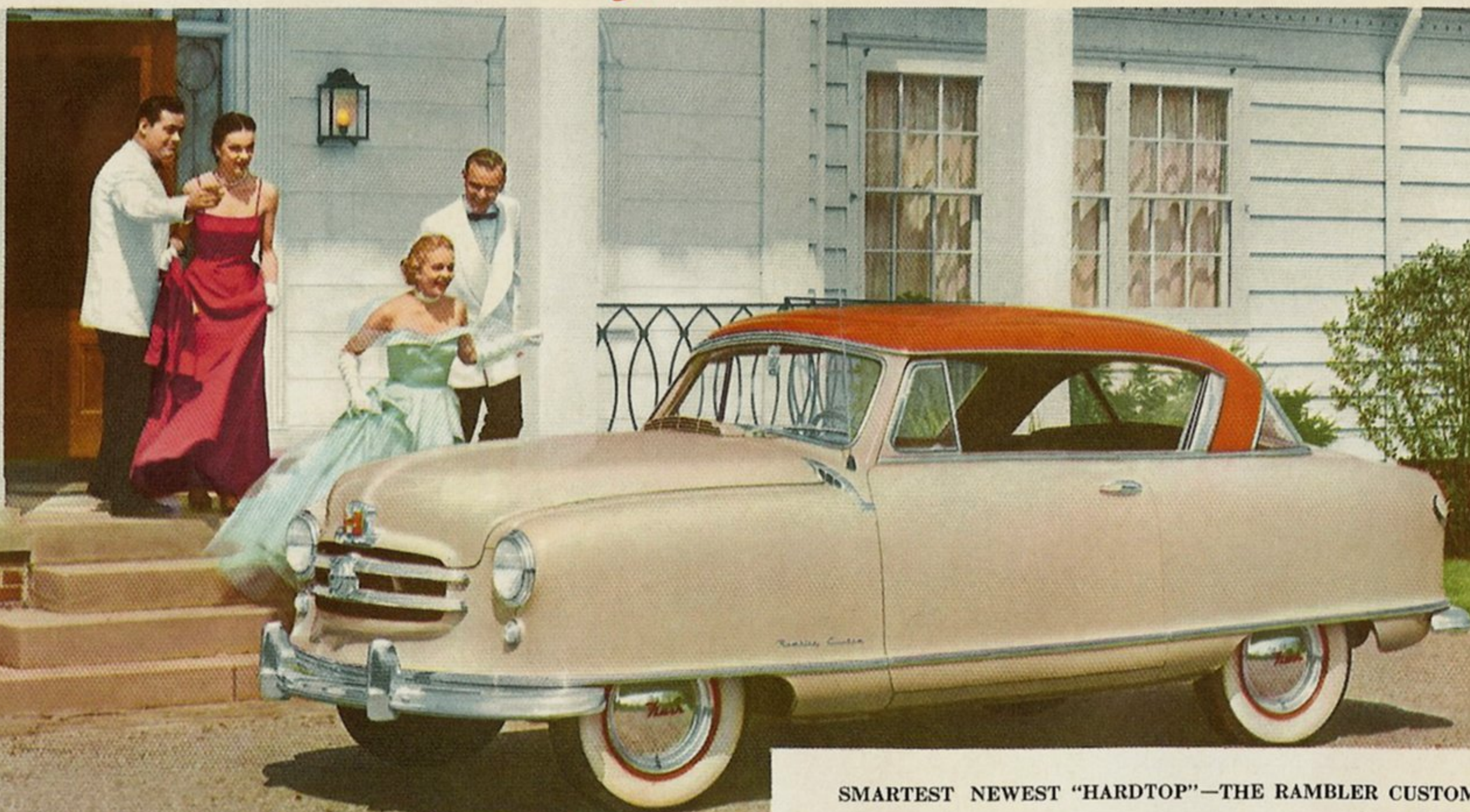
STATESMAN SUPER 4-DOOR SEDAN





BEAUTIFUL STATESMAN CUSTOM 4-DOOR SEDAN

The Cars that are Taking the Country by Storm
The Dashing New Ramblers



SMARTEST NEWEST "HARDTOP"—THE RAMBLER CUSTOM COUNTRY CLUB

See the most-talked-about, most-wanted new cars in years—the Ramblers—now in four exciting new models—absolutely new in performance . . . in traffic-trim size . . . in handling ease—proved tops for gasoline mileage in the Mobilgas Economy Run—the Rambler Convertible with overdrive set a new all-time mark—31.05 miles to the gallon.

You've never seen anything like them. The Rambler "All-Weather" Convertible Sedan—first and only car to offer all the thrill of the open car with the comfort and safety of a sedan. Its sparkling "hardtop" twin—the Rambler Country Club—newest and smartest, with widest eye-level visibility of any car at lowest price.

Look at the amazing double-duty Ramblers—the All-Purpose Sedan in Greenbrier and Station Wagon styles—the Suburban—all are swanky family sedans that instantly convert to husky, heavy haulers at the drop of a seat. Like all Nash Airflytes, the Ramblers are built to stay new years longer with double-rigid, double-rugged Airflyte Construction that's lastingly free from body-bolt squeaks and rattles.

Drive a Rambler and discover the smartest new car in America today.



It's Two Cars in One—This swanky Rambler Station Wagon, like the Greenbrier and Suburban, doubles as a family sedan, and big load carrier, with a sturdy platform over six feet long.



Here's Custom Elegance in Every Inch. The Rambler Custom Models give you Weather Eye Conditioned Air System, radio, de luxe steering wheel, directional signals—altogether nearly \$300 in custom accessories included *at no extra cost.*



RAMBLER CUSTOM "GREENBRIER" ALL-PURPOSE SEDAN



RAMBLER CUSTOM ALL-WEATHER CONVERTIBLE SEDAN



RAMBLER CUSTOM STATION WAGON

Make Your Grand and Glorious Choice From 21 Different Color Options



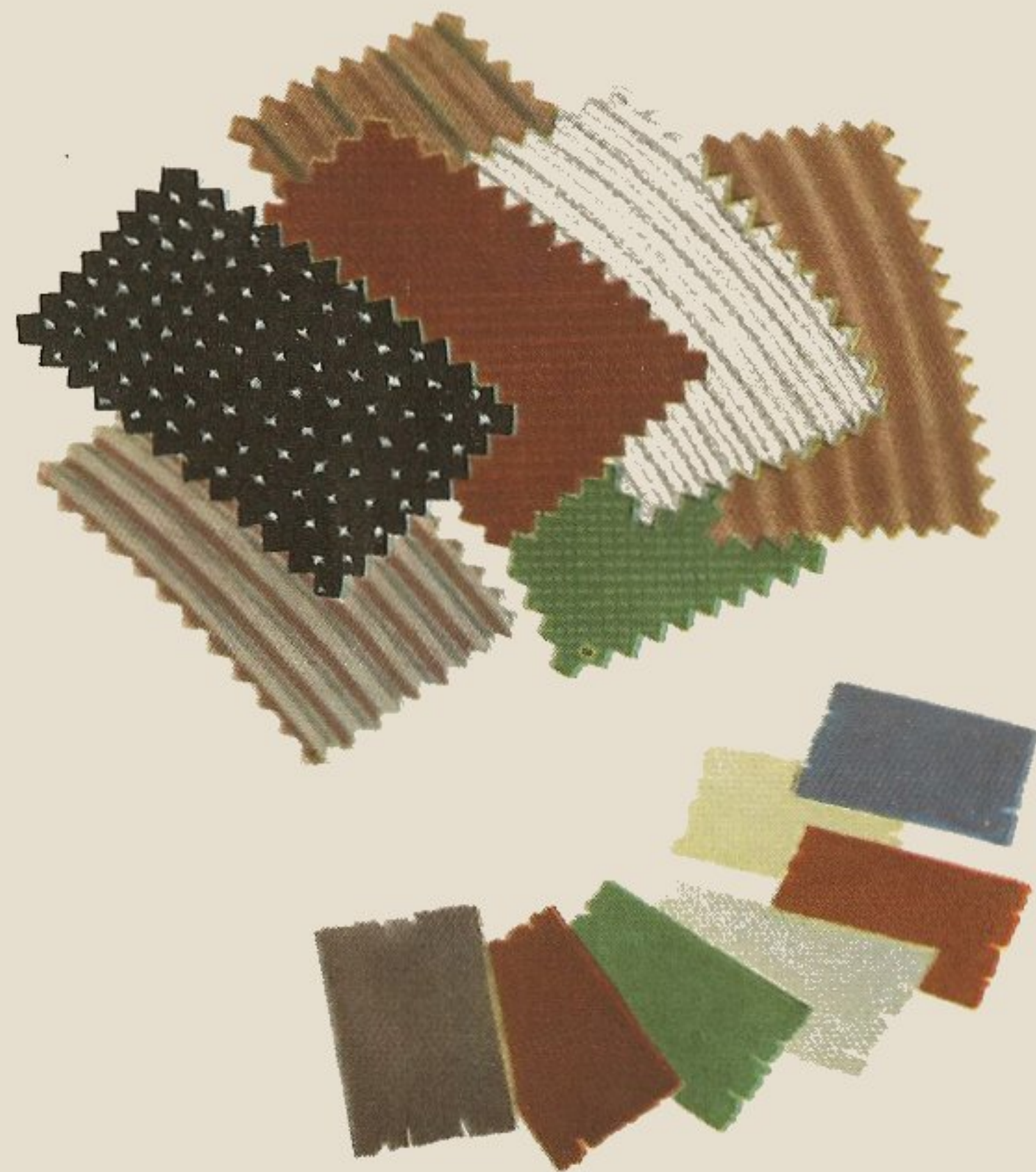
New Pilot Panel houses all your driving dials. You can check your speed, fuel, oil pressure, generator, radiator temperature all in a split-second glance. New safety, thrilling new beauty. Designed with a woman's touch, Nash controls are easy to reach and fool-proof to operate.



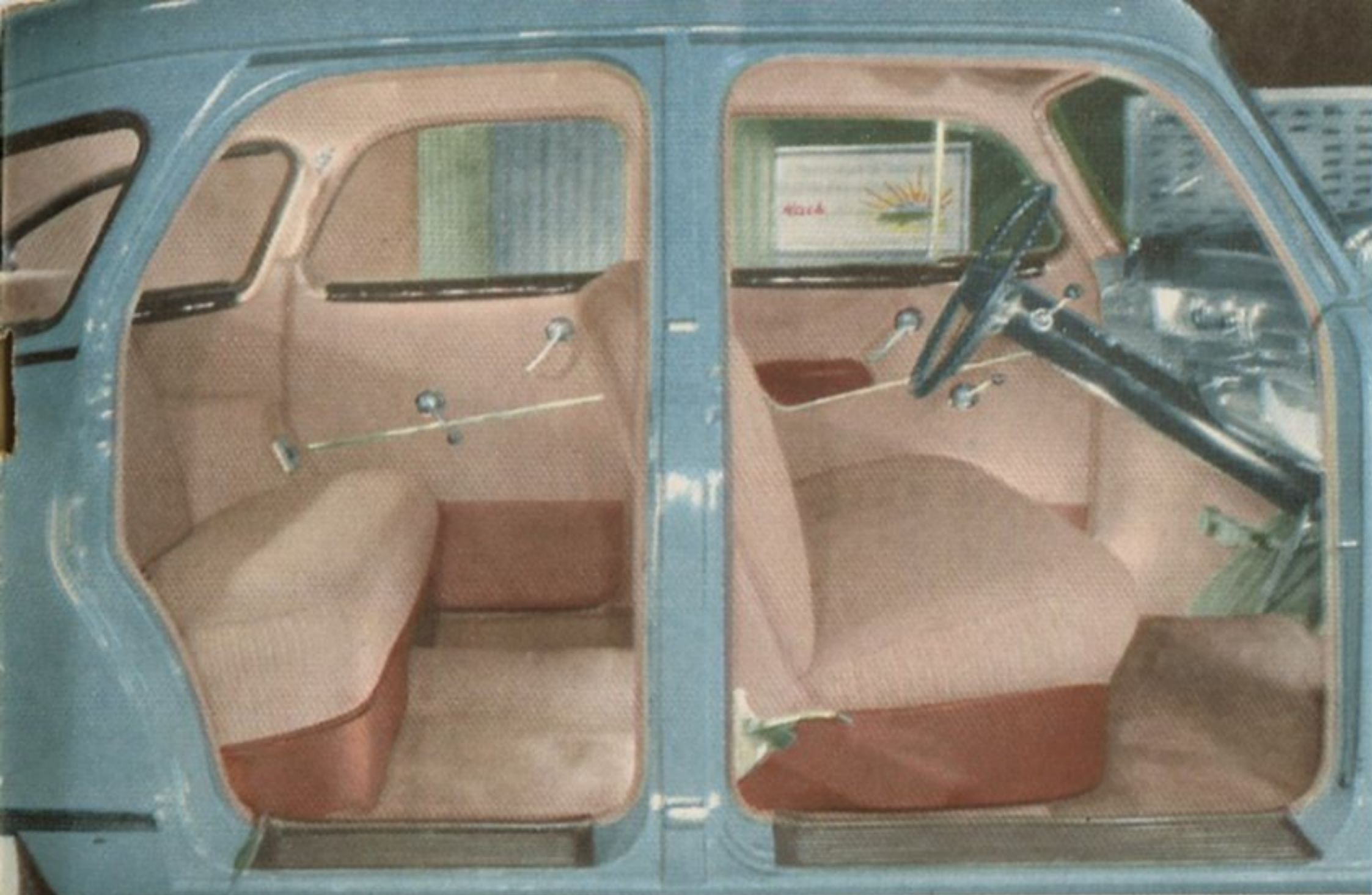
Look—Another Nash Exclusive. It's a glove drawer that *slides* out instead of *spilling* out. And it has more useful room than you've ever seen in any car.



Disappearing Arm Rest is standard on Custom Ambassador and Statesman models, optional on Super models. You enjoy luxurious spaciousness.



Yes, It's True! Your Nash Airflyte can be custom-tailored to your taste. A wide selection of 21 interior color combinations lets you design your own custom interior as you would your living room at home.



The Super Interior—Never before has a Super Series offered such a fine choice of quality fabrics to harmonize with the broad and beautiful range of colors available in the Nash Airflyte.



The Custom Interior—Nash offers you a rainbow of colors and fabrics to set a decorator dreaming. The foam-sponge cushions may be upholstered in any of the 2-tone diamond pattern and needle point combinations for true custom luxury.



Rambler Custom Interiors—You'd never believe there could be such luxury in a lowest-price car. Yes, even fine needle point upholstery plus Weather Eye, radio—nearly \$300 worth of custom accessories included at no extra cost.

Nash
Airflyte

The World's Most Modern Cars

★ Nash Airflyte Specifications ★

Ambassador

BODY—Airflyte Construction . . . Body-and-frame of Unitized type, one solid welded unit. Seating width at elbow 63 in. front, 61 in. rear. All steel parts of body bonderized for rust resistance. All doors front hinged.

EXTERIOR—Over-all length 211 in. Wheelbase 121 in. Width 77½ in. Height, loaded, 62 in. Front tread 54¹/₁₆ in.; rear 60½ in. Turning radius 22 ft. 2 in. Road clearance 7½ in.

MECHANICAL—Overhead valve Jetfire engine, 6 cylinder 234.8 cu. in. 115 h.p. 7.3:1 compression ratio. Four-ring pistons fitted with U-Flex type steel oil rings in lower groove. Seven-main-bearing crankshaft. Intake manifold sealed-in-head and water heated. Uniflo-Jet fuel-mizer carburetor. Suspension by frictionless coil springs front and rear. Torque tube drive. Duo-Servo brakes, with 10 in. drums. Transmission options include conventional 3 speed unit, automatic overdrive or Hydra-Matic. Axle ratios 4.1:1 with conventional transmission, 4.44:1 with overdrive, 3.54:1 with Hydra-Matic. Tires 7.10 x 15 super-cushion. 20 gallon fuel tank.

EQUIPMENT—(extra cost). Nash-exclusive Weather Eye Conditioned Air System. Built-in bed (standard on two-door models and all custom series). Reclining front seat. Custom models include foam cushions, two-tone upholstery in long-wearing needle point and diamond patterns; electric clock, directional signals, chrome wheel discs, courtesy lights, front and rear.

Statesman

BODY—Airflyte Construction. Seating width at elbow 63 in. front, 61 in. rear. Bonderized body and sheet metal. Trunk capacity 28½ cu. ft. Front seat headroom 36 in.; rear 35 in.

EXTERIOR—Over-all length 201 in. Wheelbase 112 in. Width 77½ in. Height, loaded, 61 in. Front tread 54¹/₁₆ in.; rear 59¹/₁₆ in. Turning radius 21 ft. 2 in. Road clearance 7¼ in.

MECHANICAL—L-head, 6 cylinder Flying Scot engine, 184 cu. in. 85 h.p. 7.0:1 compression ratio. Four ring pistons, with U-Flex type lower oil ring. Intake manifold sealed-in-block, water heated for Iso-Thermal temperature control. Uniflo-Jet YF type carburetor, vacuum economizer and diaphragm type accelerator pump. Suspension by four frictionless coil springs. Torque tube drive, rubber-insulated at engine connections. Two-shoe self-centering brakes, acting on 9 inch drums. Transmission options: Conventional 3 speed, with 4.4:1 axle; automatic overdrive, with 4.9:1 axle; Hydra-Matic, with 3.77:1 axle. Tires 6.40 x 15 super cushion. 20 gallon fuel tank.

EQUIPMENT—(extra cost). Nash-exclusive Weather Eye Conditioned Air System. Built-in bed (standard on four door models and all custom series). Reclining front seat. Custom models include foam cushions, two-tone upholstery in long-wearing needle point and diamond patterns, electric clock, directional signals, chrome wheel discs, courtesy lights, front and rear.

Rambler

BODY—Airflyte Construction, with body-and-frame one solid welded unit. Overhead rails in Convertible Sedan provide rigidity far greater than in other convertibles and give added protection to passengers. Seating widths at elbow, front 56 in., rear 52½ in. Front seat divided to left of center.

EXTERIOR—Over-all length 176 in. Wheelbase 100 in. Width, 73½ in. Height, Convertible, loaded, 58½ in.; Station Wagon and Suburban model, 61 in. Front tread 53¼ in.; rear 53 in. Turning radius 18 ft. 7 in. Road clearance 7¼ in.

MECHANICAL—L-head 6 cylinder Flying Scot engine, 172.6 cu. in. 82 h.p. Compression ratio, 7.25:1. Four-ring pistons, with steel U-Flex type lower oil ring. Intake manifolds sealed-in-block, with Iso-Thermal temperature control. Uniflo-Jet YF type carburetor, with diaphragm type accelerator pump and vacuum economizer. Long-life squeakless fan belt with triangular cross-section. Coil springs at front, semi-elliptic rear springs. Hotchkiss drive from rear axle through springs. Super cushion tires, 5.90 x 15. Axle ratios: with standard 3-speed transmission 3.77:1; with overdrive 4.1:1 or 4.4:1 (optional). 20 gallon gas tank.

EQUIPMENT—Custom models shown include as standard equipment Weather Eye Conditioned Air System, radio, custom steering wheel and upholstery, foam cushions, directional signals, electric clock, courtesy lights, chrome wheel discs. Suburban model (not illustrated) available with Weather Eye and radio as standard equipment.

Nash Motors reserves the right to make changes at any time, without notice, in specifications, prices of models, and also to discontinue models

NSP51-783—400M—OCTOBER 1, 1951

LITHO IN U.S.A.

Nash Motors

DIVISION OF NASH-KELVINATOR CORPORATION

*Before You Decide, Take an
Airflyte Ride in The World's Most
Modern Cars—Sold and Serviced by . . .*