



365 DAYS A YEAR

Sierra



GMC

Sierra

SIERRA *Extended Cab*

Sierra extends your capabilities by extending its own. 365 days a year.

The 1998 GMC Sierra is no one trick pony. It proves itself every day in hundreds of different ways. No matter if it's hauling supplies or cruising along the highway, Sierra is designed and built to be the most capable pickup you've ever driven.



Sierra SLT 1500 Extended Cab short box 4x4 shown with available Third Door.

sierra extends your capabilities by extending its own. 365 days a year.

The 1998 GMC Sierra is no one trick pony. It proves itself every day in hundreds of different ways. No matter if it's hauling supplies or cruising along the highway, Sierra is designed and built to be the most capable pickup you've ever driven.



Available Third Door

No matter what goes in the back of your Sierra Extended Cab, it goes in more easily with the available Third Door. Making the best possible use of every cubic centimetre of space seems to be a bit of a passion with our engineers.

Sierra SLT 1500 Extended Cab short box 4x4 shown with available Third Door.

SIERRA *Regular Cab*

You pack a lot into your day. You can pack even more into Sierra.

There really is no such thing as a typical day. There are always enough surprises along the way to keep things interesting. To get the most out of every day, you have to get the most out of your pickup. And Sierra is built to never let you down — this is one pickup that's as durable as it is capable.



Sierra SLE 1500 Regular Cab long box 4x4 with optional equipment.

No matter how rough it gets out there, inside it's smooth sailing.

Sierra SLT Extended Cab interior with leather seating surfaces and other available equipment.



Potholes, rainstorms and overly aggressive drivers are a fact of life. Fortunately, you can escape these harsher realities inside a Sierra pickup. The glove-soft leather seating surfaces in the Sierra SLT are enough to smooth out anyone's ruffled feathers.

The standard seating in all Extended Cabs is a 60/40 split bench seat. The SLE Custom Cloth interior (shown) features a fold-down centre armrest with a storage compartment and more.



SIERRA

Instrument Panel

The cleaner the lines, the clearer your vision.

The sleek lines of Sierra's instrument panel represent more than a keen eye for design. They also represent clear sightlines — making instruments and controls easy to locate and easy to read, so you can keep your eyes on the road. While you can appreciate the stylishness of the instrument panel when Sierra's parked — when you're on the road the less you look at it the better.

Dual Power Outlets supply power for electronic accessories. A third power source is provided by the lighter receptacle.

There are **Five Sound Systems** to choose from, including an AM/FM stereo with both a cassette and a compact disc player.



The convenient **Electric Push-Button Transfer Case** is available on Sierra 1500 and 2500 Series 4x4 models. This allows you to shift-on-the-fly from 2HI to 4HI just by pressing a button.

Sierra's instrument panel puts convenience right at your fingertips.

FLOOR CONSOLE

The floor console between the available bucket seats provides CD or cassette storage. Or you can choose to use the space for an additional cupholder, included with Sierra at no charge.



REAR PASSENGER CONVENIENCE

This console also provides rear-passenger cupholders and a slide-out drawer on Extended and Crew Cabs.

OVERHEAD CONSOLE

An overhead console includes reading lights, plus convenient storage for items such as sunglasses and a garage door opener. The overhead console is available in SLE and SLT Extended Cab and Crew Cab models with optional front high back bucket seats.



INSTRUMENT PANEL CUPHOLDERS

Two more cupholders are mounted on the instrument panel.



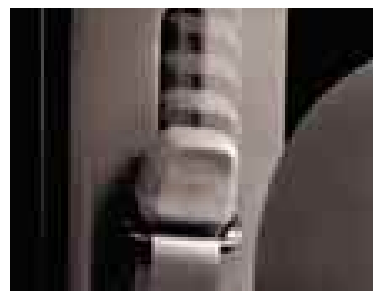
ARMREST

A multi-feature armrest includes a coin holder, map net and writing surface. The armrest is included with SLE and SLT trim on bench and 60/40 split-bench front seats.



SCOTCHGARD™

All fabrics and floor carpeting are treated with stain-resistant Scotchgard™ Protector to help keep them looking new longer.



ADJUSTABLE SHOULDER BELTS

Adjustable shoulder belts give the driver and the outboard front passenger the ability to tailor their comfort using a sliding vertical adjustment.

SELF DIMMING MIRROR

A self-dimming electrochromic rearview mirror dims automatically to reduce glare. It includes an integral electronic compass readout and is available on SLE and standard on SLT.



FULL POWER CONTROLS

SLE and SLT trim levels include power windows, door locks and remote controlled exterior mirrors. The backlit control switches are on the driver's side door panel.



REAR SEAT HEAT DUCTS

Dual colour-keyed floor ducts help keep Extended and Crew Cab rear seat passengers comfortable in cold weather.



Available (interim 1998 model year) dealer-installed OnStar System provides both convenience and peace of mind. One push of a button on your cellular phone puts you in touch with a trained representative who has immediate access to a host of services.

OnStar offers many services, including:

- Roadside Assistance — flat tire change, jumpstarts, etc.
- Routing support - directions from anywhere to anywhere
- Emergency Services - including police, fire and ambulance
- Vehicle Locator - to find your vehicle if you get lost (or it gets stolen)
- Air Bag notification - to notify emergency services if your air bag deploys
- Voice-activated cellular phone - so you can keep your hands on the wheel
- And much more.

OnStar will only be available on gasoline powered models under 3856 kg (8500 lb.) GVWR.

Your GMC Dealer has details.

Our engineers took a very hands on approach to this interior.

SIERRA

Versatility/Capability

sierra is built for the long haul, the short haul and everything in between.

Sierra is one pickup that really hauls its weight. It not only has impressive payload and trailering capacities, its flexibility allows you to put the most into the available space. But that's only part of the story — Sierra is also built to keep hauling its weight year after year.

CABS AND BOX STYLES

There are almost as many different cab and box styles with Sierra as there are ways to load them. And Sierra's box is as durable as it is functional, built using double-wall construction. The floor is made from a single piece of corrosion-resistant heavy gauge galvanized steel. The tailgate is easily removable without the use of tools.



SPORTSIDE BOX



WIDESIDE SHORT BOX



WIDESIDE LONG BOX

Shown with dual rear wheels.

MAXIMUM PAYLOAD AND TOWING CAPACITY

Sierra Pickup's **maximum payload capacities** range up to well over two tons and **trailer capacity** up to 5670 kg (12,500 lb.) when properly equipped. These figures include weight of passengers, cargo and all equipment. Behind those capacities are Vortec engines that generate strong low-end torque to get heavy loads moving, as well as abundant high-end torque for pulling power on grades.

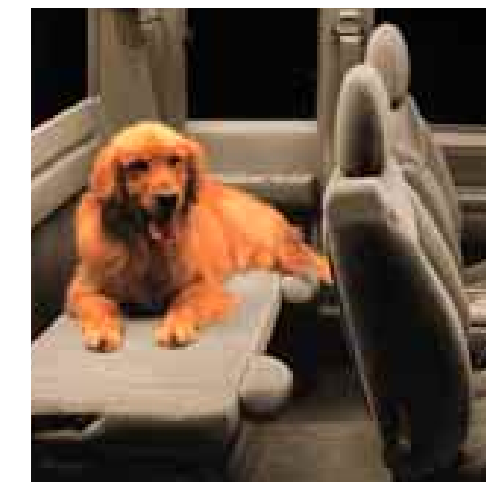


REGULAR CAB



EXTENDED CAB VERSATILITY

The rear bench seat in Extended Cabs provides **two loading options**. The seat can be folded down to create a loading shelf (as shown), or it can fold up to provide additional vertical storage.



EXTENDED CAB



TWO-TIER LOADING

Two-tier loading gives you added loading options. Indented side-walls in the cargo box let you use 2" x 6"s to create two separate upper and lower loading tiers.



EXTENDED CAB WITH AVAILABLE THIRD DOOR

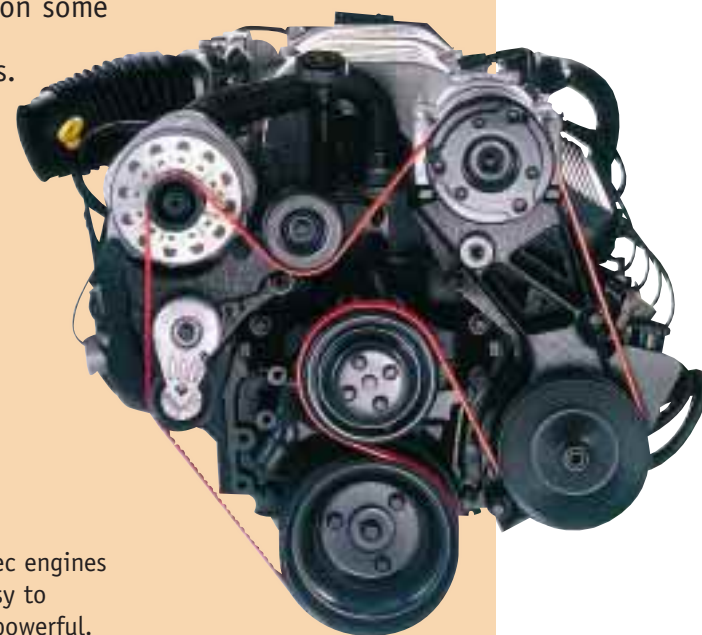


CREW CAB



Sierra's loaded with power.

You've already read about Sierra's substantial hauling capabilities. The strength of those numbers is the result of the strength of Sierra's family of Vortec engines. These engines deliver more than the horsepower and torque you need to get a load moving and keep it moving smoothly. Vortec engines also achieve their maximum power and torque efficiently, providing excellent fuel economy. And for those who can benefit from the economies of Diesel power, GMC offers the 6.5 L Turbo Diesel even on some 1500 series models.



Sierra's family of Vortec engines are as reliable and easy to maintain as they are powerful.



VORTEC 4300 SFI V6
Standard Vortec 4300 SFI V6:
200 hp at 4400 rpm, 255 lb.-ft. torque at 2800 rpm.



VORTEC 5000 SFI V8
Standard Vortec 5000 SFI V8:
230 hp at 4600 rpm, 285 lb.-ft. torque at 2800 rpm.



VORTEC 5700 SFI V8
Available Vortec 5700 SFI V8:
255 hp at 4600 rpm, 330 lb.-ft. torque at 2800 rpm.



VORTEC 7400 SFI V8
Available Vortec 7400 SFI V8:
290 hp at 4000 rpm, 410 lb.-ft. torque at 3200 rpm.



6.5 L TURBO DIESEL
The 6.5 L Turbo Diesel has
195 hp @ 3400 and 430 lb.-ft. of torque @ 1800 RPM on heavy duty models.



Stage 1- Rear springs unloaded



Stage 2- Rear springs loaded

EVEN SIERRA'S SPRINGS PERFORM

Sierra's two-stage multi-leaf springs engage as the load increases. The springs provide extra support while ensuring a smooth ride.

LESS MAINTENANCE

GMCs are built to be durable year in and year out. In fact, GMCs are so durable, they require less maintenance. That not only translates into fewer trips for service - it also saves you money.

- The **spark plug wires** are expected to last 160,000 km[†]. Even the **spark plugs** are platinum-tipped for extended life.
- **Ignition timing** is controlled by the Powertrain Control Module (PCM) and is factory set to eliminate the need for frequent adjustment.
- New Long-Life **DEX-COOL™ engine coolant** extends the coolant change interval to 5 years/240,000 km[†].
- All Vortec engines feature a **high capacity air cleaner** for extended engine protection with a "Change Air Filter" indicator to prevent unnecessary replacement expense.
- **Dexron® - III automatic transmission fluid** only needs replacing at 160,000 km*[†].
- **Transparent engine coolant, brake fluid and windshield washer fluid reservoirs** allow easy visual level checks. The coloured lettering on the caps of the fluid reservoirs helps avoid filling with an incorrect fluid.
- An **aluminized stainless steel exhaust** system is designed to resist corrosion for excellent durability.
- **Delco Freedom batteries** feature sealed side terminals to reduce power robbing corrosion.
- The **serpentine accessory drive belt** has a self-adjusting belt tensioner and is expected to last 160,000 km[†].
- The **Vehicle Control Module** is designed to capture and process an increased variety of functions which increases the system's reliability and provides more data for increased diagnostic capability.

* Vehicles with a GVWR over 3856 kg (8,500 lb.), or used in severe service, require fluid replacement at 80,000 km.
† Under normal conditions.



STAINLESS STEEL EXHAUST SYSTEM



PLATINUM-TIPPED SPARK PLUGS

POWERTRAIN SPECIFICATIONS

SERIES			1500	2500	2500/C6P ²	3500
ENGINE AVAILABILITY						
Engine	HP @ RPM	Torque (lb.-ft.) @ RPM				
Vortec 4300 SFI ¹ V6 (4.3L)	200 @ 4400	255 @ 2800	S	-	-	-
Vortec 5000 SFI ¹ V8 (5.0L)	230 @ 4600	285 @ 2800	0*	S	-	-
Vortec 5700 SFI ¹ V8 (5.7L)	255 @ 4600	330 @ 2800	0	0	S	S
Vortec 7400 SFI ¹ V8 (7.4L)	290 @ 4000	410 @ 3200	-	-	0	0
6.5L V8 Turbo Diesel	180 @ 3400	360 @ 1800	0	0	-	-
6.5L V8 HD Turbo Diesel	195 @ 3400	430 @ 1800	-	-	0	0
TRANSMISSION AVAILABILITY						
Transmission: 5-speed OD manual			S	S	-	-
Transmission: HD 5-speed OD manual			-	-	S	S
Transmission: electronic automatic 4-speed with OD			0	0	-	-
Transmission: HD electronic 4-speed OD automatic			0 w/diesel	0 w/diesel	0	0

1 - Sequential Fuel Injection. 2 - C6P is an optional heavy-duty chassis equipment package.
* Standard on long box Extended Cabs.

An air bag you can turn on and off? That's a switch.

Air bags provide a significant boost to driver and front passenger protection. That's why you'll find standard Next Generation dual air bags* that deploy with reduced force and help reduce injury in certain moderate to severe frontal collisions. Air bags are most effective when safety belts are also used. But a passenger-side air bag isn't recommended when a rear facing child safety seat is in use. Sierra's air bag deactivation switch can be easily turned OFF or ON using the ignition key.

*Dual air bags are standard on models below 3856 kg (8500 lb.) GVWR.

NEXT GENERATION AIR BAGS



SAFETY AND SECURITY HIGHLIGHTS

Sierra's complete safety and security package includes:

- Four-wheel anti-lock braking system (ABS)
- PASSLock™ theft deterrent system that is designed to shut down the fuel injection system for 10 minutes if a would-be thief tries to hot wire the vehicle
- Front and rear crush zones that help absorb impact during a collision
- Side-guard door beams that are designed to help prevent intrusions into the passenger compartment during certain side collisions
- Daytime Running Lights enhance visibility to pedestrians and other drivers
- The centre high-mounted stop lamp helps alert following drivers that you have applied your brakes
- Brake/transmission shift interlock prevents the automatic transmission from being shifted out of "Park" unless the brake pedal is depressed, helping to avoid accidental acceleration
- Vehicles equipped with a manual transmission feature a starter lock-out which prevents the engine from being started unless the clutch pedal is fully depressed, helping to avoid accidental acceleration



SIDE GUARD DOOR BEAMS

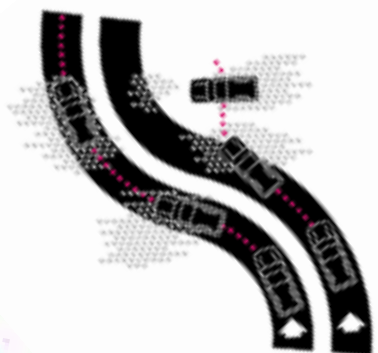


PASSLOCK™ THEFT DETERRENT SYSTEM



REMOTE KEYLESS ENTRY

The available **Remote Keyless Entry** system provides push-button remote locking and unlocking from up to 6m (20 ft.) away. It also activates interior lighting for additional security and convenience.



FRONT CRUSH ZONES

FOUR WHEEL ABS



AIR BAG DEACTIVATION SWITCH



While we refer to Sierra as an excellent pickup, it is actually a family of excellent pickups. So it's easy to tailor one to your own needs and desires. As a guide, body style refers to cab configuration, (Regular Cab, Extended Cab, Crew Cab) and box style refers to short and long Wideside box or Sportside box. Sierra also comes in a variety of trim levels — SL, SLE and SLT. Different trim levels offer different grilles, wheels, upholstery and equipment.



SL Sierra Regular Cab 1500 2WD SL with Wideside box, and the standard vinyl bench. Shown with available equipment. Even the SL has high standards: four-wheel anti-lock brakes, power steering, intermittent washer/wipers, tachometer, AM/FM stereo radio, multiple electrical outlets and a heavy-duty 8-wire trailering harness are included.



SLE Sierra Extended Cab 4x4 1500 SLE with Wideside box, shown with available Custom Cloth 60/40 split bench and other available equipment. Beyond SL equipment, the SLE features a chrome trimmed grille, bodyside mouldings, air conditioning, AM/FM stereo/cassette, power windows, mirrors and door locks,



SLT Sierra Extended Cab 4x4 1500 SLT with Wideside box and available high back bucket seats with leather seating surfaces. Shown with available equipment. Beyond SLE, the SLT features six-way power driver's seat adjuster, Remote Keyless Entry, aluminum wheels (1500 models only) and more.



SPORTSIDE Sierra Extended Cab 1500 SLE with Sportside box. Shown with available equipment. The Sportside, with its flared rear fenders and distinctive box, is available in the short-box 1500 Series models except the SPECIAL.

2-WHEEL DRIVE WHEELS



Steel, painted argent with black hub cap. Standard on SL.



Steel, painted argent with Rally trim rings and bright hub caps. Standard on SLE. Included with SPECIAL. Optional on SL.



Chrome plated. Optional on all 1500 models.



Aluminum. Optional on SL and SLE 1500. Standard on SLT.



Steel, painted argent with black hub caps on 3500 SL with dual rear wheels. SLE and SLT include Rally trim rings and bright hub caps as shown.

4-WHEEL DRIVE WHEELS



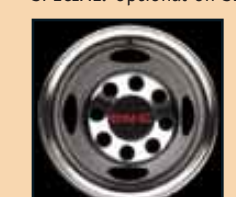
Steel, argent with black hub cap. Standard on SL.



Steel, painted argent with trim rings and bright hub caps. Standard on SLE. Included with SPECIAL. Optional on SL.



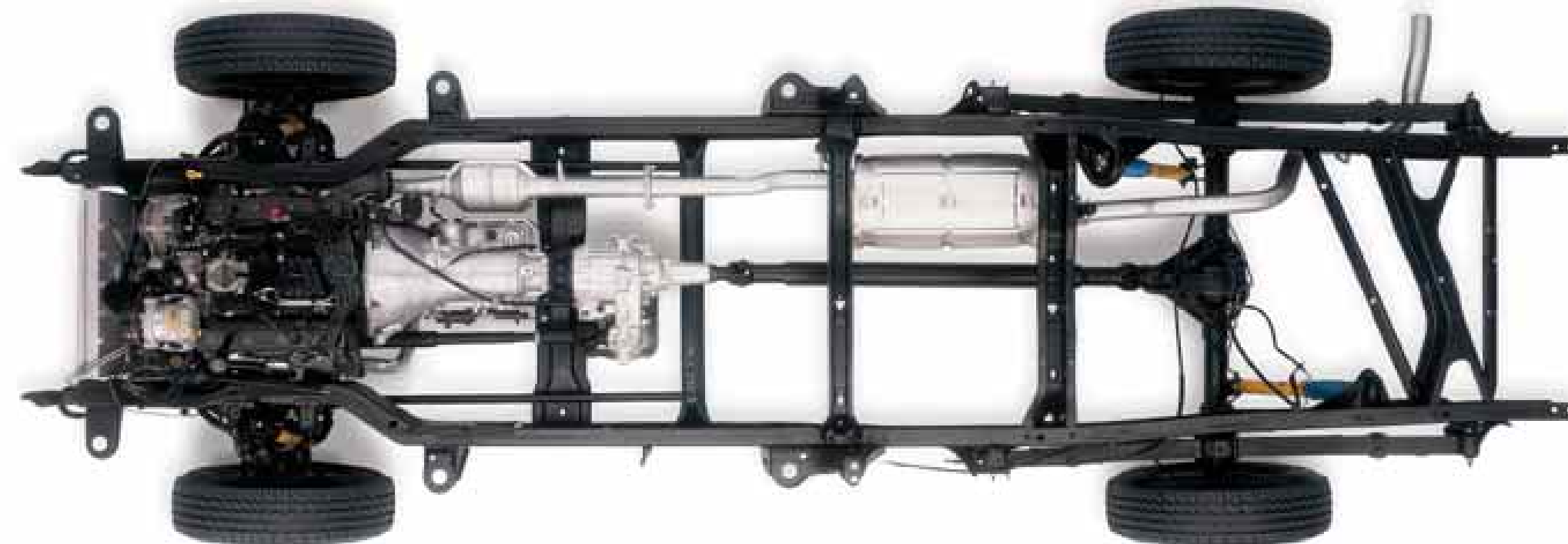
Aluminum. Optional on 1500 SL and SLE. Standard on SLT.



Steel, painted argent with black hub caps on 3500 SL with dual rear wheels. SLE and SLT include Rally trim rings and bright hub caps as shown.

Sierra's quality story is more than skin deep.

There are many parts of Sierra's quality story that are immediately apparent to the eye. Others require a little digging. You'll never get to see your Sierra from this point of view, but it should be comforting to know that all these features are built right in.



FOUR WHEEL ANTI-LOCK BRAKING SYSTEM (ABS)

Standard on every Sierra, four-wheel anti-lock brakes help you maintain steering control under extreme braking conditions - even on most slippery surfaces.

SMOOTH-SHIFTING AUTOMATICS

The optional electronically-controlled 4-speed automatic overdrive transmission shifts with smooth precision and automatically compensates for load and grade variances.

SIDE-GUARD DOOR BEAMS

Structural steel side-door beams are designed to help prevent intrusions into the passenger compartment during certain side collisions.

COILS OR BARS

Computer-selected front coil springs on 2WD models help isolate bumps for a smooth ride. With 4x4, front torsion bars help deflect bumps and keep front tires in contact with the road surface.

STAINLESS-STEEL EXHAUST SYSTEM

Made of corrosion-resistant aluminized stainless steel, Sierra's exhaust system is designed to provide long-lasting durability.

UNDERBODY SPARE

The standard full-size spare tire assembly mounts securely beneath the vehicle, out of the way. When needed, a crank-down winch provides easy access to the spare.

LONG-RANGE FUEL TANK

A large fuel tank lets you go further between fuel stops. Short box models have a 95 L (20.8 gal.) tank. Long box models include a 129 L (28.3 gal.) tank.

SEMI-PERIMETER FRAME

The Sierra frame has exceptional torsional strength that helps the chassis resist twisting when you are hauling, towing or driving in rugged terrain. And Sierra's entire frame is dipped in a hot-wax bath to help it resist corrosion.

A BACKBONE OF STEEL

Heavy C-channel side rails on the ladder-type frame have boxed front sections for added support where it is needed most to support the engine, transmission and suspension components. The rails are welded or bolted to cross members for even greater strength.

INDEPENDENT FRONT SUSPENSION

Sierra's independent front suspension helps keep front wheels virtually straight up and down and in contact with the road surface. The stable ride enhances your control and reduces tire wear.

TOWING CAPACITY

Sierra's chassis provides an excellent towing platform with up to 5670 kg (12,500 lb.) towing capacity in specific models, when properly equipped.

TWO-STAGE MULTI-LEAF REAR SPRINGS

As load weight increases, specially designed second stage springs engage smoothly to provide additional support without sacrificing ride quality.

MODEL SELECTOR

MODEL NAMES	MODEL NUMBER	WHEELBASE mm (in.)	DRIVE-TRAIN	GVWR Std./Max. kg (lb.)	PAYLOAD* Max. kg (lb.)	BOX LENGTH nominal feet	MAX. GROSS TRAILER WEIGHT** kg (lb.)	SEATING Std./Opt.	
Sierra Pickup (Reg. Cab)	C10703	2985 (117.5)	RWD	2767 (6100)	977 (2154)	6.5	3175 (7000)	3/2	
	C10903	3340 (131.5)	RWD	2767 (6100)	910 (2007)	8	3175 (7000)	3/2	
	K10703	2985 (117.5)	4x4	2767 (6100)	799 (1762)	6.5	2948 (6500)	3/2	
	K10903	3340 (131.5)	4x4	2767 (6100)	734 (1619)	8	2948 (6500)	3/2	
	C20903	3340 (131.5)	RWD	3266 (7200)/3901 (8600)	1254 (2765)/1663 (3667)	8	3175 (7000)/4536 (10,000)	3/2	
	K20903	3340 (131.5)	4x4	3901 (8600)	1499 (3305)	8	4336 (10,000)	3/2	
	C30903	3340 (131.5)	RWD	4082 (9000)/4536 (10,000) ¹	1824 (4023)/2153 (4747)	8	4536 (10,000)	3/2	
	K30903	3340 (131.5)	4x4	4173 (9200)/4536 (10,000) ¹	1747 (3852)/1982 (4370)	8	4536 (10,000)/4536 (10,000)	3/2/3/2	
	Sierra Pickup (Ext. Cab)	C10753	3594 (141.5)	RWD	2812 (6200)	917 (1802)	6.5	3175 (7000)	6/3/5
		C10953	3950 (155.5)	RWD	2812 (6200)	717 (1582)	8	3175 (7000)	6/3/5
K10753		3594 (141.5)	4x4	2812 (6200)/2994 (6600)	644 (1421)/782 (1724)	6.5	2948 (6500)/3175 (7000)	6/3/5/6/3/5	
K10953		3950 (155.5)	4x4	2812 (6200)/2994 (6600)/3084 (6800)	521 (1150)/660 (1456)/524 (1157)	8	2948 (6500)/2948 (6500)/3175 (7000)	6/3/5/6/3/5/6/3/5	
C20753		3594 (141.5)	RWD	3266 (7200)	1152 (2540)	6.5	3175 (7000)	6/3/5	
C20953		3950 (155.5)	RWD	3901 (8600)	1493 (3292)	8	4536 (10,000)	6/3/5	
K20753		3594 (141.5)	4x4	3901 (8600)	1437 (3169)	6.5	4536 (10,000)	6/3/5	
K20953		3950 (155.5)	4x4	3901 (8600)	1323 (2917)	8	4536 (10,000)	6/3/5	
C30953		3950 (155.5)	RWD	4536 (10,000) ¹	1973 (4351)	8	4536 (10,000)	6/3/5	
K30953		3950 (155.5)	4x4	4536 (10,000) ¹	1797 (3962)	8	4536 (10,000)	6/3/5	
Sierra Crew Cab	C30943	4280 (168.5)	RWD	4082 (9000)/4355 (9600)/4536 (10,000) ¹	1520 (3353)/1743 (3842)/1846 (4070)	8	4536 (10,000)/4536 (10,000)/4536 (10,000)	6/5/6/5	
	K30943	4280 (168.5)	4x4	4173 (9200)/4536 (10,000) ¹	1446 (3189)/1673 (3689)	8	4536 (10,000)/4536 (10,000)	6/5/6/5	

*Payload includes passengers, equipment and cargo. Higher payloads may require optional equipment. Payloads are approximate and will change with the addition of optional or aftermarket equipment. Consult your dealer or equipment supplier for details.
 ** Trailer Weight (also called Trailer Towing Capacity) is the weight of a trailer, its load or contents plus any other weight added to the tow vehicle. Many trailer towing applications require additional optional equipment. Refer to the trailering information section for details. ¹ - With dual rear wheel equipment.

NOTE: Aftermarket manufacturers offer many products such as slide-in campers and camper shells that are designed to fit pickup trucks. However, such products built prior to the 1988 model year may not fit on the beds of the 1988 or newer Sierra Full-Size Pickups. Please confirm the compatibility of any aftermarket product you intend to install on your new Sierra by consulting with the product manufacturer, or by checking the cargo box dimensions.

TRIM LEVEL	SPECIAL	SL	SLE & SLT
ORDERING CODE	ZE5/X81	ZE5	YE9
SAFETY AND SECURITY FEATURES			
AIR BAGS Driver and front passenger-side (on models under 3856 kg (8500 lb.) GVWR)	S	S	S
BRAKES Anti-lock braking system (ABS), 4-wheel	S	S	S
BRAKE/TRANSMISSION Shift interlock with automatic transmission	S	S	S
HEADLAMPS Daytime Running Lamps	S	S	S
ILLUMINATED ENTRY	S	S	S
KEYLESS ENTRY SYSTEM Remote (Std. on SLT)	N/A	N/A	0
SAFETY BELTS Front seat height-adjusters	S	S	S
THEFT-DETERRENT SYSTEM PASSLock™	S	S	S

INTERIOR FEATURES			
AIR CONDITIONING	0	0	S
CONSOLE Overhead, when bucket seats ordered, Extended Cab models	N/A	N/A	S
CONSOLE Floor, when bucket seats ordered. Includes 2 front cupholders. Two rear cupholders and storage drawer included in Extended Cabs.	N/A	N/A	S
CONVENIENCE GROUPS Power door locks and windows (Driver's express down feature on windows), inc. backlit switches on YE9	N/A	0 ¹	S
Tilt-Wheel™ and speed control	N/A	0	S
CUPHOLDERS Dual, in instrument panel	S	S	S
DOOR TRIM PANELS Colour-keyed grained moulded plastic	S	S	N/A
Soft vinyl with carpet covered map pocket and cloth insert	N/A	N/A	S
FLOOR COVERING Colour-keyed vinyl floor covering	S	S	0
Colour-keyed carpeting and removable mats	N/A	0	S
Rear mats – Extended Cabs	N/A	0	S
GAUGES Analogue needle design including tachometer	S	S	S
HEADLINER Full length colour-keyed cloth with matching retainer mouldings (mystic vinyl not colour-keyed on SPECIAL)	S	S	S
ILLUMINATED ENTRY With delay feature	S	S	S
MIRROR Electrochromic with compass - std. with SLT trim	N/A	N/A	0
POWER OUTLETS Two auxiliary	S	S	S
SUNSHADES LH and RH padded; colour-keyed cloth, visor RH mirror	S	S	N/A
LH and RH padded; colour-keyed cloth; LH with storage strap RH with visor mirror	N/A	N/A	S

¹Door locks only.

TRIM LEVEL	SPECIAL	SL	SLE & SLT
ORDERING CODE	ZE5/X81	ZE5	YE9
SEATS			
(Regular Cab) Full-width front bench; full-depth foam seat cushion with folding backrest. Up-level models include fold-down centre armrest with storage	S	S	S
(Extended Cab) Split front bench with folding backrests; power lumbar supports on YE9; LH and RH easy entry; folding rear bench seat. Up-level models include fold-down centre armrest with storage	N/A	S	S
Front high back reclining buckets with floor console and power lumbar supports; roof console with Extended Cab models - Leather seating surfaces with SLT trim	N/A	N/A	0
Leather seating surfaces, full width bench seat with lumbar support for driver and passenger (Regular Cab only)	N/A	N/A	0
Leather seating surfaces, 60/40 split bench seat with lumbar support for driver and passenger 6-way power driver-side seat adjuster	N/A	N/A	0
SEAT ADJUSTER Power, Driver's Side - std. with SLT trim (Extended Cab)	N/A	N/A	0
SCOTCHGARD™ Fabric protector on cloth seat trim, door trim and floor carpeting	S	S	S

SOUND SYSTEMS			
AM/FM stereo with seek/scan and digital clock; inc. 4 speakers	S	S	N/A
AM/FM stereo with seek/scan, cassette player and digital clock; inc. 4 speakers	0	0	S
AM/FM stereo with cassette player, seek/scan, automatic tone control and digital clock; inc. 6 speakers	N/A	N/A	0
AM/FM stereo with compact disc player, seek/scan, automatic tone control and digital clock; inc. 6 speakers	N/A	N/A	0
AM/FM stereo with cassette and compact disc players, seek/scan, automatic tone control and digital clock; inc. 6 speakers	N/A	N/A	0

MECHANICAL FEATURES			
BRAKES Power, front disc/rear drum	S	S	S
ENGINE Refer to page 17 for complete selection	S	S	S
ENGINE BLOCK HEATER	S	S	S
EXHAUST SYSTEM Aluminized stainless steel	S	S	S
STEERING Power, speed-sensitive	S	S	S
TRANSMISSION 4-speed electronically-controlled automatic with overdrive	0	0	0
TRANSFER CASE Electric push-button 4x4 shift (requires automatic transmission) - std. with SLT trim	N/A	0	0

TRIM LEVEL	SPECIAL	SL	SLE & SLT
ORDERING CODE	ZE5/X81	ZE5	YE9
EXTERIOR FEATURES			
BUMPER Front; chrome (YE9 – deluxe bumper with rub strip)	S	S	S
Rear step, painted on ZE5, chrome on YE9	S	S	S
THIRD DOOR RH side; (1500 short box Ext. Cab with V8 gas engine and automatic transmission only)	N/A	N/A	0
GRILLE Moulded plastic; painted argent	S	S	N/A
Chrome trim	0	0	S
HEADLAMPS Two rectangular halogen	S	S	N/A
Four, composite with halogen bulbs	0	0	S
KEY Single two-sided	S	S	S
LAMP Underhood trouble	S	S	S
MIRRORS, EXTERIOR Below eye-line type – fold-away design, painted black	S	S	S
MIRRORS Electric remote control	N/A	N/A	S
MOULDINGS Bright bodyside and wheel opening mouldings	N/A	0	S
SPORTSIDE BOX	N/A	0	0
TOW HOOKS Two front mounted at the front of each frame side member (4x4 models)	S	S	S
WHEEL TRIM Painted argent with black hub caps	N/A	S	N/A
Rally trim rings with bright hub caps	S	0	S
Aluminum - 1500 models only - std. with SLT trim	0	0	0
Chrome Plated – 1500 2WD models only	0	0	0
WINDOW Swing-out rear quarter vent on Ext. Cabs	N/A	S	S
Sliding rear	0	0	0
WIRING HARNESS Trailer – 8-wire	S	S	S
Z71 4X4 OFF-ROAD PACKAGE Includes rear fender "Z71" decal, stiffer torsion bars, 46mm rear gas-charged shock absorbers, special jounce bumpers and protective skid plate shields for engine, front differential and transfer case. Requires P265/75R-16 or LT245/75R-16C tires	N/A	N/A	0

S = Standard. 0 = Optional. NA = Not Available. NOTE: The trim features indicated reflect only a portion of the total content of each Sierra 1500 Series (1/2-ton) trim level. For a complete list and details and information relating to the Sierra 2500 (3/4-ton) and Sierra 3500 (1-ton) see your dealer for current availability and compatibility.

PREFERRED EQUIPMENT GROUPS					
These PEGs group popular options by trim level for your ordering convenience.					
1500 SERIES					
MODEL	SPECIAL	SL	SLE	SLT	
SELECT-A-UNIT CODES	8*	1	2	3	4
PREFERRED EQUIPMENT GROUPS	1SH	1SA	1SB	1SC	1SD
OPTION DESCRIPTION					
Wideside pickup box (E63)	X	U	U	U	U
Engine: Vortec 4300 SFI V6 (except Extended Cab Long Box)	X	U	U	U	U
Engine: Vortec 5000 SFI V8 (Extended Cab Long Box only)		U	U	U	U
Transmission: 5-Speed Manual with overdrive	U	U	U	U	U
Tires: P235/75R-15 ALS B/W (2WD)	X	U	U	U	U
Tires: P245/75R-16 AT B/W (4x4)	U	U	U	U	U
Seat: Front Bench (Reg. Cab)	X	X	X	U	
Seat: Split Front Bench (Ext. Cab)		X	X	U	
Air Conditioning			X	S	S
Grille: Chrome			X	S	S
Wheel Trim: Rally Trim Rings with Bright Hub Caps	U		U	S	
Seat: Split Bench with Leather Trim (Regular Cab)					U
Seat: Front High Back Reclining Buckets with Leather Trim (leather is on seating surfaces only) (includes folding rear bench seat and floor and roof consoles Extended Cabs)					U
Keyless Entry, Remote					X
Mirror, Rearview: Interior, Electrochromic; with compass					X
Seat Adjuster, Power: 6 way, Driver's side (Extended Cabs)					X
Wheels, Aluminum (2WD)					U
Wheels, Aluminum (4x4)					X

* – Regular Cab models and solid colour paint only. X – Option included in Select-A-Unit. DO NOT DELETE. U – Option included in Select-A-Unit and May Be Upgraded if desired. S – Standard.

Ball Hitch Trailering

These trailering charts will help you determine which Sierra Pickup will best suit your towing requirements. Please read the “Trailering Caution” on page 29 before trailering with your new vehicle. GMC recommends that you specify the 4-speed automatic transmission with overdrive for your truck if you plan to tow with it. See page 29 for a GCWR chart that provides additional useful information. NOTE: In addition to the weight of the trailer, maximum gross trailer weight includes all passengers, equipment and cargo in the pickup, plus any cargo in the trailer.

GAS POWERED SIERRA MODELS												
ENGINE TRANSMISSION	Vortec 4300 SFI V6 Automatic or Manual ¹			Vortec 5000 SFI V8 Automatic or Manual ¹			Vortec 5700 SFI V8 Automatic or Manual ¹			Vortec 7400 SFI V8 Automatic or Manual ¹		
MODEL	Max. Trailer Weight ² kg (lb.)	Max. Tongue Load kg (lb.)	Required Axle Ratio	Max. Trailer Weight ² kg (lb.)	Max. Tongue Load kg (lb.)	Required Axle Ratio	Max. Trailer Weight ² kg (lb.)	Max. Tongue Load kg (lb.)	Required Axle Ratio	Max. Trailer Weight ² kg (lb.)	Max. Tongue Load kg (lb.)	Required Axle Ratio
C1500 (2WD) Reg. Cab/Ext. Cab	1814 (4000) 2268 (5000)	227 (500) 272 (600)	3.08 3.42	2041 (4500) 2495 (5500) 2948 (6500)	250 (550) 317 (700) 363 (800)	3.08 3.42 3.73	2268 (5000) 2722 (6000) 3175 (7000)	250 (600) 340 (750) 396 (850)	3.08 3.42 3.73			
K1500 (4x4) Reg. Cab/Ext. Cab	2268 (5000)	272 (600)	3.73	2268 (5000) 2722 (6000)	272 (600) 340 (750)	3.42 3.73	2495 (5500) 2948 (6500)	317 (700) 363 (800)	3.42 3.73			
C2500 (2WD) Reg. Cab/Ext. Cab				2495 (5500) 2948 (6500)	317 (700) 363 (800)	3.42 3.73	2722 (6000) 3175 (7000) 3629 (8000)	340 (750) 386 (850) 431 (950)	3.42 3.73 4.10	4082 (9000)	454 (1000) 454 (1000)	3.73 4.10
K2500 (4x4) Reg. Cab/Ext. Cab							2722 (6000) 3402 (7500)	340 (750) 408 (900)	3.73 4.10	3856 (8500) 4536 (10,000)	454 (1000) 454 (1000)	3.73 4.10
C3500 (2WD) Reg. Cab/Ext. Cab							3402 (7500) 4082 (9000)	408 (900) 454 (1000)	4.10 4.56	4536 (10,000) 4536 (10,000)	454 (1000) 454 (1000)	4.10 4.56
K3500 (4x4) Reg. Cab/Ext. Cab							3175 (7000)	385 (850)	4.10	4536 (10,000) 4536 (10,000)	454 (1000) 454 (1000)	4.10 4.56
C3500 (2WD) Crew Cab							3175 (7000) 3856 (8500)	386 (850) 454 (1000)	4.10 4.56	4536 (10,000) 4536 (10,000)	454 (1000) 454 (1000)	4.10 4.56
K3500 (4x4) Crew Cab							2948 (6500) 3629 (8000)	363 (800) 431 (950)	4.10 4.56	4536 (10,000) 4536 (10,000)	454 (1000) 454 (1000)	4.10 4.56

1 – Trailer ratings are reduced with manual transmission (see GCWR chart). 2 – Maximum trailer weight is calculated assuming the driver and one passenger are in the tow vehicle and it has all required equipment. The weight of additional optional equipment, passengers and cargo in the tow vehicle must be subtracted from the maximum trailer weight. NOTE: any Sierra Pickup can tow a 907 kg (2000 lb.) trailer without special equipment. • All trailers over 907 kg (2000 lb.) require optional engine oil cooler (KC4). Heavy-duty cooling is included with heavy-duty emissions engines (Sierra Pickups with 3901 kg (8600 lb.) and above GVWRs have Heavy-Duty Emissions engines). • All trailers rated over 2268 kg (5000 lb.) require optional special trailering equipment (Z82), which includes a weight-distributing hitch platform and heavy-duty cooling (also includes heavy-duty shock absorbers on Sierra 1500 models). The optional additional transmission oil cooler (KNP) is recommended with automatic transmissions. An 8-wire trailer wiring harness is standard on all Sierra pickup models.

GAS POWERED SIERRA MODELS										
ENGINE TRANSMISSION	Vortec 5000 SFI V8 Automatic or Manual ¹			Vortec 5700 SFI V8 Automatic or Manual ¹			Vortec 7400 SFI V8 Automatic or Manual ¹			
MODEL	Max. Trailer Weight ² kg (lb.)	Max. Kingpin Load kg (lb.)	Required Axle Ratio	Max. Trailer Weight ² kg (lb.)	Max. Kingpin Load kg (lb.)	Required Axle Ratio	Max. Trailer Weight ² kg (lb.)	Max. Kingpin Load kg (lb.)	Required Axle Ratio	
C1500 (2WD) Reg. Cab/Ext. Cab 2767 kg (6100 lb.)/2812 kg (6200 lb) GVWR	2495 (5500) 2498 (6500)	544 (1200) 544 (1200)	3.42 3.73	2722 (6000) 3175 (7000)	544 (1200) 544 (1200)	3.42 3.73				
K1500 (4x4) Reg. Cab/Ext. Cab 2767 kg (6100 lb.)/2994 kg (6600 lb) GVWR	2268 (5000) 2722 (6000)	454 (1000) 454 (1000)	3.42 3.73	2495 (5500) 2948 (6500)	454 (1000) 454 (1000)	3.42 3.73				
C2500 (2WD) Reg. Cab/Ext. Cab 3266 kg (7200 lb.) GVWR	2495 (5500) 2498 (6500)	907 (2000) 907 (2000)	3.42 3.73	2722 (6000) 3175 (7000)	907 (2000) 907 (2000)	3.42 3.73				
C2500 (2WD) Reg. Cab/Ext. Cab 3901 kg (8600 lb.) GVWR				2948 (6500) 3629 (8000)	1360 (3000) 1360 (3000)	3.73 4.10	4082 (9000) 4990 (11,000)	1133 (2500) 1133 (2500)	3.73 3.73	
K2500 (4x4) Reg. Cab/Ext. Cab 3901 kg (8600 lb.) GVWR				2722 (6000) 3402 (7500)	1133 (2500) 1133 (2500)	3.73 4.10	3856 (8500) 4763 (10,500)	907 (2000) 907 (2000)	3.73 4.10	
C3500 (2WD) Reg. Cab/Ext. Cab				3402 (7500) 4082 (9000)	1360 (3000) 1360 (3000)	4.10 4.56	4763 (10,500) 5670 (12,500)	1360 (3000) 1360 (3000)	4.10 4.56	
K3500 (4x4) Reg. Cab/Ext. Cab				3175 (7000)	1360 (3000)	4.10	4536 (10,000) 5443 (12,000)	1360 (3000) 1360 (3000)	4.10 4.56	
C3500 (2WD) Crew Cab				3175 (7000) 3856 (8500)	1360 (3000) 1360 (3000)	4.10 4.56	4763 (10,000) 5670 (12,500)	1360 (3000) 1360 (3000)	4.10 4.56	
K3500 (4x4) Crew Cab				2948 (6500) 3629 (8000)	1360 (3000) 1360 (3000)	4.10 4.56	4536 (10,000) 5443 (12,000)	1360 (3000) 1360 (3000)	4.10 4.56	

1 – Trailer ratings are reduced with manual transmission (see GCWR chart). 2 – Maximum trailer weight is calculated assuming the driver and one passenger are in the tow vehicle and it has all required equipment. The weight of additional optional equipment, passengers and cargo in the tow vehicle must be subtracted from the maximum trailer weight. Kingpin weight cannot exceed available payload. Subtract vehicle weight plus passengers and cargo from the GVWR to determine available payload. *Caution must be used when selecting a Sierra 1500 model to tow 5th wheel trailers due to limited payload and rear axle capacity to handle typical kingpin weights. Payload capacity is reduced by the added weight of optional equipment such as engines and automatic transmissions, etc. plus passengers and cargo in the tow vehicle. Sierra 1500 models can tow 5th wheel trailers, as long as the kingpin weight does not cause the vehicle to exceed its GVWR.* All available engine and transmission oil coolers must be specified if not standard equipment.

Fifth-wheel trailers have a greater percentage of their weight on the kingpin (tongue load) than a conventional trailer. Because of this, greater attention must be given to the maximum allowable payload and GVWR. The above chart shows the maximum allowable payload and GVWR for each fifth-wheel application, which should not be exceeded. The weight of any additional equipment and all passengers must be subtracted from the payload weight shown to determine the maximum kingpin load available.

Fifth-wheel trailering

If you plan to “fifth-wheel” a trailer with a gross weight of up to 5670 kg (12,500 lb.) with your Sierra Pickup, please take special note of the following: there are two types of pickup fifth-wheel hitch installations. The first type has a fifth wheel on a bar mounted on brackets attached to the frame and the bed of the pickup, and is supported by braces on the fender housings. (NOTE: Diagonal bracing is required. The kingpin is mounted on the trailer.) With the second type, the kingpin is mounted in the bed of the pickup box and is bolted to the box and the pickup frame, and the fifth wheel is mounted on the trailer. These types of hitches are supplied and installed by the trailer manufacturer.

Trailer with Diesel powered Sierra models

BALL HITCH TRAILERING – DIESEL-POWERED SIERRA MODELS

ENGINE TRANSMISSION	6.5L V8 Turbo Diesel Automatic or Manual ¹		
MODEL	Max. Trailer Weight ² kg (lb.)	Max. Torque Load kg (lb.)	Required Axle Ratio
K1500 (4x4) Extended Cab	2722 (6000) 3175 (7000)	340 (750) 386 (850)	3.42 3.73
C2500 (2WD) Regular Cab & Extended Cab	2948 (6500) 3402 (7500) 3856 (8500)	363 (800) 408 (900) 454 (1000)	3.42 3.73 4.10
K2500 (4x4) Regular Cab & Extended Cab	2948 (6500) 3629 (8000)	363 (800) 431 (950)	3.73 4.10
C3500 (2WD) Regular Cab & Extended Cab	3629 (8000)	431 (950)	4.10
K3500 (4x4) Regular Cab & Extended Cab	3402 (7500)	408 (900)	4.10
C3500 (2WD) Crew Cab	3629 (8000)	431 (950)	4.10
K3500 (4x4) Crew Cab	3402 (7500)	408 (900)	4.10

1 – Trailer ratings are reduced with manual transmission (see GCWR chart).
 2 – Maximum trailer weight is calculated assuming the driver and one passenger are in the tow vehicle and it has all required equipment. The weight of additional optional equipment, passengers and cargo in the tow vehicle must be subtracted from the maximum trailer weight.

NOTE: Any Sierra pickup can tow a 907 kg (2000 lb.) trailer without special equipment.
 • All trailers rated over 2268 kg (5000 lb.) require optional special trailering equipment (Z82), which includes a weight-distributing hitch platform and heavy-duty cooling (also includes heavy-duty shock absorbers on Sierra 1500 models.)

FIFTH-WHEEL TRAILERING – DIESEL-POWERED SIERRA MODELS

ENGINE TRANSMISSION	6.5L V8 Turbo Diesel Automatic or Manual ¹		
MODEL	Max. Trailer Weight ² kg (lb.)	Max. Kingpin Load kg (lb.)	Required Axle Ratio
C2500 (2WD) Regular Cab & Extended Cab 3266 kg (7200 lb.) GVWR	2948 (6500) 3402 (7500)	726 (1600) 726 (1600)	3.42 3.73
C2500 (2WD) Regular Cab & Extended Cab 3901 kg (8600 lb.) GVWR	3175 (7000) 3856 (8500)	1133 (2500) 1133 (2500)	3.73 4.10
K2500 (4x4) Regular Cab & Extended Cab 3901 kg (8600 lb.) GVWR	2948 (6500) 3629 (8000)	907 (2000) 907 (2000)	3.73 4.10
C3500 (2WD) Regular Cab & Extended Cab	3629 (8000)	1364 (3000)	4.10
CK3500 (4x4) Regular Cab & Extended Cab	3402 (7500)	1364 (3000)	4.10
C3500 (2WD) Crew Cab	3629 (8000)	1364 (3000)	4.10
K3500 (4x4) Crew Cab	3402 (7500)	1364 (3000)	4.10

WITH AUTOMATIC TRANSMISSION

GCWR kg (lb.)	3856 (8500)	4309 (9500)	4536 (10,000)	4763 (10,500)	4990 (11,000)	5216 (11,500)	5443 (12,000)	5897 (13,000)	6124 (13,500)	6577 (14,500)	6804 (15,000)	7711 (17,000)	8618 (19,000)
ENGINE													
Vortec 4300 SFI V6 Gas	3.08	3.42	3.73										
Vortec 5000 SFI V8 Gas		3.08		3.42		3.73							
Vortec 5700 SFI V8 Gas			3.08		3.42		3.73		4.10		4.56		
Vortec 7400 SFI V8 Gas											3.73	4.10	4.56
6.5 L V8 Turbo Diesel							3.42	3.73		4.10			

WITH MANUAL TRANSMISSION

GCWR kg (lb.)	2948 (6500)	3175 (7000)	3402 (7500)	3629 (8000)	4082 (9000)	4536 (10,000)	4990 (11,000)	5443 (12,000)	5897 (13,000)	6124 (13,500)	6577 (14,500)	6804 (15,000)	7258 (16,000)	7711 (17,000)	8618 (19,000)
ENGINE															
Vortec 4300 SFI V6 Gas	3.08	3.42	3.73												
Vortec 5000 SFI V8 Gas		3.08		3.42	3.73										
Vortec 5700 SFI V8 Gas						3.08	3.42	3.73		4.10		4.56			
Vortec 7400 SFI V8 Gas												3.73	4.10	4.56	
6.5 L V8 Turbo Diesel									3.73	4.10		4.56			

CAUTION – If you don't use the correct equipment and drive properly, you can lose control of your vehicle when you pull a trailer. For example, if the trailer is too heavy, your vehicle brakes may not work well – if at all. Your vehicle passengers and you could also be seriously injured. Pull a trailer only after you have taken all of the following steps.

TRAILERING BRAKES – If your trailer weighs more than 454 kg (1000 lb.) loaded, then it must have its own adequate brakes. Be sure to read and follow the instructions for the trailer brake controller so that it is installed, adjusted and maintained properly.

HITCHES – It's important to have the correct hitch equipment. Crosswinds, large trucks going by and rough roads are just a few of the reasons why you'll need the right hitch. Here are some rules to follow:

- Be sure to use a frame-mounted, weight-distributing hitch and sway control of the proper size when towing a trailer with a Sierra pickup if the loaded trailer will weigh more than 2256 kg (5000 lb.). This equipment is very important for proper vehicle loading and good handling when you're driving.

NOTE: These are, by no means, the only precautions to be taken when trailering. See the Owner's Manual for the GMC vehicle of your choice for additional guidelines and trailering tips.

Gross combination weight ratings

USE GCWRs TO DETERMINE ENGINE, TRANSMISSION AND REAR AXLE RATIOS. Perhaps you prefer to use Gross Combination Weight Ratings (GCWRs) to determine the engine and rear axle ratio you will require to tow a specific trailer with your Sierra. The chart at left shows you the maximum allowable GCWR based on all the available truck engines and rear axle ratios with automatic or manual transmissions. The GCWR includes the total loaded weight of both the truck and the trailer. Any available engine may be used for trailering if the GCWR shown is not exceeded.



GMC and you.

General Motors of Canada is committed to making your GMC ownership experience as exceptional and satisfying as the vehicle itself. At General Motors of Canada, we know that selecting a new truck is a serious process. In this brochure, we've endeavoured to provide you with essential information about Sierra to help you make an intelligent, informed choice. To learn even more about their many features and benefits, please visit our web site at:

www.gmcanada.com

or call our **CUSTOMER COMMUNICATION CENTRE** at **1-800-263-3777**

or **1-800-263-7854** (French) (TTY users, **1-800-263-3830**).

GM TOTAL WARRANTY Every new GM car and light-duty truck is backed by the GM TOTAL™ Warranty 3 years/60,000 km (whichever comes first) which covers complete vehicle repairs, including parts and labour, to correct any defects in material or workmanship occurring during the warranty period. The GM TOTAL™ Warranty requires no deductible. Tires are included. Warranty features include towing, no-charge warranty transfer, 6-year/160,000 km (whichever comes first) corrosion perforation coverage and 8-year/130,000 km (whichever comes first) coverage on catalytic convertors and powertrain control modules (PCM). Regular maintenance is not included. Application of additional rust-inhibiting materials is not required under the corrosion coverage and none is recommended. See your dealer for terms of this limited warranty.

GM Roadside ASSISTANCE When you drive away in your new 1998 GM car or light-duty truck, the security and convenience of round-the-clock Roadside Assistance is available via a toll-free number usable anywhere in Canada or the United States. During the warranty period, whenever a problem may occur, your Roadside Service Advisor is just a phone call away. Whether it's lock-out assistance, a jump start, a flat tire change, fuel delivery or towing assistance, simply call 1-800-268-6800 and we'll be there to assist you without charge. See your dealer for details.

GM Courtesy Transportation Your GM dealer may offer courtesy transportation while your 1998 GM vehicle is serviced at your GM dealership for repairs covered under the 3 year/60,000 km GM TOTAL™ Warranty. See your GM dealer for full details.

GMAC FINANCIAL SERVICES General Motors Acceptance Corporation of Canada Limited (GMAC for short) is a General Motors division that was created specifically to assist GM Dealers in marketing new vehicles to qualified GM customers. You can arrange GMAC financing right in your GM dealer's showroom, and the terms of your arrangement can be tailored to fit your particular needs. It's a convenient, flexible alternative to a conventional bank loan.

GM SMARTLEASE GM SMARTLEASE is administered by GMAC as an alternative to traditional financing. Qualified SMARTLEASE customers pay for the portion of the vehicle that is used, rather than paying for the entire vehicle as with traditional financing. Consider these SMARTLEASE benefits: Affordable monthly payments, drive more vehicle for your money, drive a new vehicle more often, limited maintenance and repair expense, no resale risks or trade-in hassles and a guaranteed option-to-purchase price when your lease ends. Most importantly, there are no surprises with SMARTLEASE. Leasing doesn't have to be a mystery. See your GM dealer about the benefits of SMARTLEASE. Or call 1-800-32-SMART.



Start your dream rolling with The GM Card®. With the GM Visa* Card, your dream of owning a new GM car or truck can quickly become a reality. Every time you make a purchase using The GM Card, you earn 5% of that purchase which you can apply towards the purchase price or lease down payment of your next eligible new GM vehicle**. Earn up to \$3,500† without having to do anything other than charge your usual purchases to your GM Visa Card.

What's more, there is no annual fee. To receive an application or for full terms and conditions, please see your local GM Dealer, TD Bank branch or call 1-800-GM-DRIVE.

*Registered Trademark of General Motors Corporation, TD Bank licensed user.
 *TD and GM are licensed users of Marks. **See the GM Card Program Rules for limitations and details. See your dealer for vehicle eligibility.
 †Earn up to \$500 per Cardholder Year, for a maximum of \$3,500 over the most recent 7 consecutive years.

GM MOBILITY PROGRAM If you or your passenger(s) have a physical disability which prevents you from driving or riding in a factory-equipped vehicle, find out about the GM Mobility Program for Persons with Disabilities. You may be eligible for reimbursement of up to \$1000 (GST included) for adaptive equipment you may require for your 1998 GM vehicle. Your GM dealer can also set up complete GMAC financing for you. (SMARTLEASE not eligible.) Beyond that, your GM dealer can provide you with lists of qualified driver assessment centres and mobility equipment installers. Call this toll-free number for more information: 1-800-GM-DRIVE (TTY users, 1-800-263-3830).

GM Graduate Program Get \$750 (GST included) off. If you're a recent graduate from a recognized college or university, you may qualify for \$750 (GST included) off on the purchase or lease down payment of the new GM vehicle of your choice. Anyone graduating from a 3-year university degree program, a 2-year college program or, in Quebec, a 3-year CEGEP D.E.C. (Technique) program between May 1, 1995 and December 31, 1998 can take part. To get credit for your degree, see your GM dealer for full details.

GM Protection Plan GMPP coverage provides you with "Peace of Mind" protection from repair costs (parts and labour), as well as many associated expenses that may occur to your vehicle beyond the GM TOTAL™ Warranty period. Whether you're purchasing or leasing your GM vehicle, there's a GMPP coverage level and plan term to suit your budget and driving needs. Be sure to ask your GM dealer about the many benefits you receive through your purchase of the General Motors Protection Plan. There are other extended service plans in the marketplace, but GMPP is the only Extended Service Plan backed by the resources and commitment of General Motors.

GM Parts If you want more than factory-installed options for your vehicle, ask your Sales Consultant about GM Accessories. Your GM dealer can supply and install quality parts and accessories engineered for all GM vehicles at competitive prices. When installed at the time of purchase, GM provides GM TOTAL™ Warranty coverage for all dealer-installed GM Accessories.

GM Goodwrench Service Buying a new vehicle is one of the most important decisions you can make. Naturally, you want to get the best possible value from your purchase. That's why regular maintenance is essential. It helps your vehicle last longer, run better and safer, with better fuel economy. What is more important it also enhances your resale or trade-in value. So you end up getting a greater return on your investment.

Fitting routine maintenance into your busy schedule need not be difficult. Now, GM Goodwrench Service makes it easier, with one-stop shopping for all your routine maintenance needs. You need no appointment for a lube, oil and filter, done in 29 minutes or the next one is free. As well, GM trained technicians will efficiently take care of everything from brakes, exhaust, shocks and struts to tire rotation and tune-ups using only quality GM parts. The job is done right the first time with up front competitive prices.

Whenever you see the GM Goodwrench Service sign, you know you've come to a convenient place you can trust for all your routine maintenance service. GM Goodwrench Service is available at authorized participating GM Dealers.

GM Customer Satisfaction It's good to know, when you travel long distances, that there are hundreds of GM dealers in Canada, each one ready to provide you with professional service and genuine GM parts. You can phone the GM Customer Communication Centre toll-free at 1-800-263-3777 (English) or 1-800-263-7854 (French) (TTY users, 1-800-263-3830) to talk with trained representatives regarding any General Motors product or service. The Centre is open Monday through Friday, 7:30 a.m. to 11:30 p.m., EST.

A Word About This Brochure This brochure is based on the latest information at the time of printing. General Motors of Canada Limited reserves the right to make changes at any time, without notice, to specifications, equipment, colours, models, availability, programs and services. Your GMC dealer is the best source for up-to-date information.

A Word About Assembly GMCs are equipped with engines and components produced and assembled by different operating units of General Motors, its subsidiaries and suppliers and these engines and components may change or be obtained from different sources from time to time. All such engines and components are approved for use in GMC Trucks. Certain equipment ordered may be unavailable at the time of assembly and we suggest that you verify that your vehicle includes the equipment you ordered, or if there are changes, that they are acceptable to you.

Please Note: Instruments shown throughout this brochure are metric in Canada.

General Motors, GM, the GM emblem, GMC, GMC Truck, the GMC logo, Sierra, Sonoma, Jimmy, Yukon, Safari, Savana, Suburban, Delco, Vortec, Tilt-Wheel, Insta-Trac, Autotrac and the TOTAL Warranty are all trademarks of General Motors Corporation and/or General Motors of Canada Limited.

GMAC and SMARTLEASE are trademarks of the General Motors Acceptance Corporation.

PASSLock is a registered trademark of the Delco Electronics Corporation.

Printed in Canada, September 1997.

© General Motors of Canada Limited

SIERRA

Colours and Trim

COLOURS



11 – Pewter Metallic



50 – Summit White



35 – Laguna Blue Green Metallic



51 – Dark Toreador Red Metallic



39 – Indigo Blue Metallic



69 – Copper Metallic



41 – Onyx Black



74 – Fire Red



43 – Emerald Green Metallic

TWO-TONE OPTION

Exterior/interior colour availability varies by model and two-tone paints chosen. See your GMC dealer for details.



Conventional two-tone (ZY2). Conventional two-tone places the accent colour below the lower styling line. Not available on SPECIAL.

FABRICS



Vinyl



Cloth



Custom Cloth



Leather

COLOUR AND TRIM AVAILABILITY

The colour bars shown are not intended to reflect the actual interior colours. Refer to FABRICS for more accurate representation.

EXTERIOR	INTERIOR			
	GRAY	BLUE	NEUTRAL	RED
11 PEWTER MET.	X	X	–	X
35 LAGUNA BLUE GREEN MET.	X	–	X	–
39 INDIGO BLUE MET.	X	X	X	–
41 ONYX BLACK	X	–	X	X
43 EMERALD GREEN MET.	X	–	X	–
50 SUMMIT WHITE	X	X	X	X
51 DK. TOREADOR RED MET.	X	–	X	X
69 COPPER MET.	X	–	X	–
74 FIRE RED	X	–	X	X



Dirt roads. Snow covered roads. Slick roads. Roads under construction. The Trans Canada Highway. Fully loaded. Empty. An 18-hour day. A long weekend.

Sierra is built to stand up to whatever is in its path. No matter what's going on outside, inside Sierra you're a world away.

Dependable. Powerful. Capable. Strong. Efficient. The more you demand from a pickup, the better Sierra looks. Every day.



GMC

SIERRA
365 DAYS A YEAR