

TRACKER

2001 CHEVY TRACKER



CHEVY TRUCKS





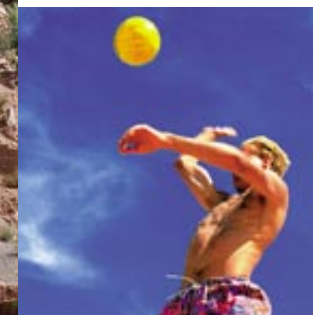
2001

CHEVY TRACKER



You've never accepted a ho-hum, status quo approach to life. Well, there's a vehicle built with that philosophy as its blueprint. The attitude is simple: look different and be different. So what do you call a rugged sport-utility vehicle that is as different as you? Call it Tracker - the SUV that's unlike anything in its class. Why? Underneath Tracker's adventuresome styling is the solid foundation of a Chevy Truck. With 4-wheel drive, high ground clearance and a full-length ladder-type real truck frame, Tracker will absorb the punishment of serious off-roading. But beware: this kind of terrain can be hazardous to those other SUVs built on their glorified car-type unibody frames. And Tracker doesn't just take you as far as you want to go - its legendary Chevy dependability keeps you coming back for more. Whenever and wherever you feel like it.

You can find more information about the Chevy Tracker at gmcanada.com



Tracker 4-Door shown in Wildfire Red.

2-DOOR CONVERTIBLE

OPEN AIR. OPEN INVITATION.

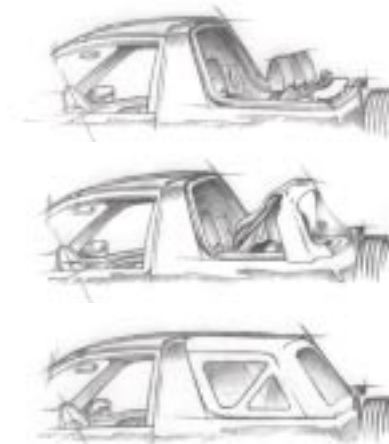
Other convertibles may look hot parked in front of some trendy café, but they are definitely out of place once the road ends and the real adventure begins. Once the landscape opens up, so do the possibilities with Tracker 2-Door Convertible. Flip open the top and the view is altogether different from other convertibles - where there are no roads or obstacles. It's your 100% pure form of escape. Looking for grand vistas, fresh air and plenty of sunshine? You've come to the right place.

Rear-seat outboard armrests in Tracker 2-Door Convertible feature both a cupholder and a flat storage area with raised edges that help keep items in place, even when off-roading.



Tracker 2-Door Convertible shown in Bright Blue Metallic.

The choice is yours: the 2-piece Tracker Convertible top can flip back part way to create a sunroof or it can be folded down completely to a full convertible position.



It isn't only Tracker Convertible's fold-down top that is adaptable. The 4-passenger seating features a full-folding rear seatback that allows you to carry oversized gear.



UNDER THE SKIN TRACKER'S ALL BUSINESS.

Tracker makes you want to play hard and often. But while you play to your heart's content, Tracker is built to work its heart out. Don't forget, we're talking about a Chevy Truck here. So it shouldn't surprise you to learn that Tracker is rugged enough for serious off-roading, yet nimble enough for crisp manoeuvring and easy parking. Its rigid body-on-frame construction makes it strong, while its cushioned body mounts and tuned suspension system help smooth out even the roughest edges of your journey.

Tracker's shift-on-the-fly 4x4 system allows you to shift in and out of 4-wheel drive, from 2HI to 4HI and back.



FIVE-LINK REAR SUSPENSION
Tracker's rear suspension configuration, along with a wide front and rear stance, helps add stability both on- and off-road.

FULL LADDER-TYPE FRAME
It's the same type of design you'll find under every dependable, long-lasting Chevy SUV. It's the foundation of strength that gives Tracker its true truck durability. What else would you expect from a Chevy truck?

4-SPEED AUTOMATIC TRANSMISSION
An available 4-speed automatic transmission features electronic shift control for precise, smooth gear changes. A switch allows you to select "Normal" or "Power" settings. Choose "Power" for enhanced performance.

CORROSION PROTECTION
Tracker's body is made of two-sided "galvanealed" steel (excluding the roof on 4-Door models) to increase corrosion protection. Tracker is backed by a 6-year/160,000 km (whichever comes first) corrosion perforation warranty.

BOLD, SPORTY STYLING
Tracker combines the wide stance and high ground clearance you expect from a sport-utility vehicle, with sporty, aggressive styling. Tracker's shape doesn't just make a statement, it is also very aerodynamic.

TAILGATE-MOUNTED SPARE TIRE
By mounting the spare tire on the tailgate, interior cargo space is maximized. The spare is locked to the tailgate for added security and is mounted in a low position to enhance rearward visibility.

EASY MAINTENANCE
Tracker is built to endure. So is its automatic transmission fluid and filter that are designed to be changed only after 166,000 km.*

*Maintenance needs may vary with different uses and driving conditions. See your Tracker Owner's Manual for more information.

AUTOMATIC LIGHT CONTROL
This feature turns headlights and tail lights on and off automatically as outside lighting conditions require, for added safety and convenience.

SIDE DOOR BEAMS
Side-guard door beams help reduce the risk of intrusion into the passenger compartment in the event of a shallow-angle side impact.

SKID PLATES
When off-roading, you can always use the extra protection provided by available dealer-installed skid plates. They help prevent damage to the front differential and transfer case. A fuel tank shield is standard.

CHILD-SECURITY REAR DOOR LOCKS
For added safety on Tracker 4-Door, when engaged, standard child-security door locks allow you to prevent the rear doors from being opened from the inside.

REAR SEAT HEAT DUCTS
We didn't forget the comfort of rear seat passengers when designing Tracker. That explains the presence of toe-warming rear seat heat ducts.

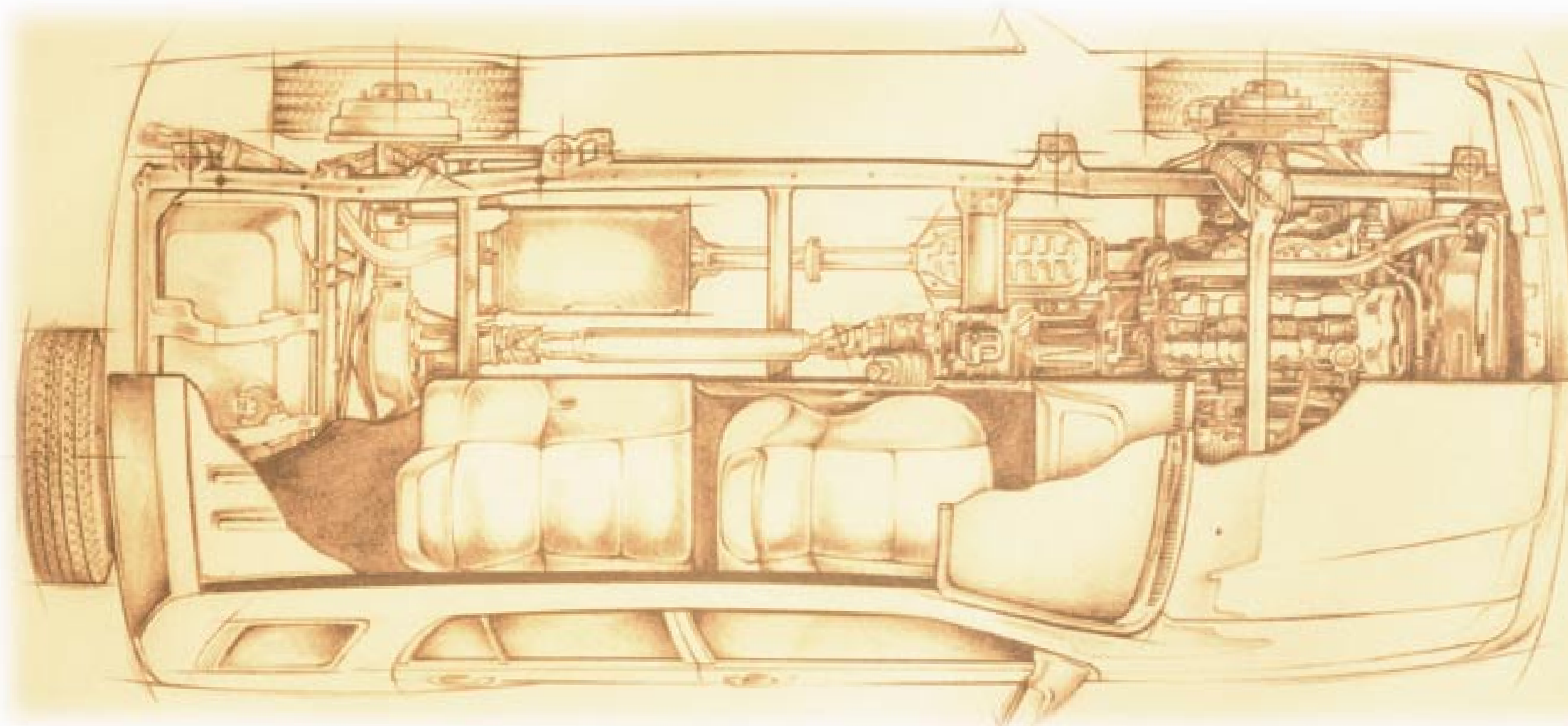
MACPHERSON STRUT FRONT SUSPENSION
MacPherson Struts feature a coil spring that is separate from the shock absorber. This smart, space-efficient design helps to smooth out rough terrain.

DUAL OVERHEAD CAM ENGINE
The 127-horsepower 16-valve 2.0-litre DOHC engine is standard on Tracker 4-Door and available on Tracker 2-Door Convertible.

AIR BAGS
Next Generation dual front air bags* are standard and deploy with reduced force. Air bags supplement the lap/shoulder safety belt system to help restrain the driver and front passenger in certain moderate to severe frontal collisions.

*Remember, always wear your safety belt, even with air bags.

A NOTE ABOUT CHILD SAFETY: Children generally are safer if they are secured in a rear seat using the appropriate child safety seats and restraints, which is why General Motors recommends that child safety seats be properly secured in a vehicle's rear seat. Never place a rear-facing infant restraint in the front seat of any vehicle equipped with an active air bag. Refer to the Owner's Manual and child safety seat instructions for more safety information.



RACK-AND-PINION STEERING
A rack-and-pinion power steering system contributes to Tracker's precise road feel. It also lets you manage tight turns, while helping you manoeuvre with agility through traffic.

ANTI-FLEX BAR
An anti-flex bar arches across the 2.0-litre engine compartment to tie the front suspension strut towers together. This makes Tracker's body structure even more rigid.

SIX-LAYER PAINT PROCESS
Tracker's 6-layer base-coat/clear-coat paint process helps retain its glossy finish. A chip-resistant finish on lower body surfaces protects against damage from stones and other minor debris.

CHILD SEAT TETHER ANCHORS
Child seat tether anchors provide the means to secure child seats, thereby limiting the forward motion of a child seat and its occupant in the event of rapid deceleration.

BODY ISOLATION SYSTEM
An isolation system provides two layers of suspension/body ride cushioning material to soften harsh vibrations and enhance road manners.



An available anti-lock braking system (ABS) helps you maintain steering control on most slippery surfaces, even during hard braking.

ACCESSORIES

TRACKER. IT'S ABOUT TO HAVE YOUR NAME WRITTEN ALL OVER IT.

Tracker is built to reflect your personal style. You can take that expression even further with the addition of GM Accessories. They enhance the appearance and the functionality of your Tracker. And only GM Accessories are GM Engineering certified and backed by GM's 3-year/60,000 km TOTAL™ Warranty, when installed by the dealer at the time of the vehicle purchase or lease.

The accessories featured here are only a selection of those available for Tracker. Ask your dealer for more complete information.



Tracker 2-Door Convertible shown in Silver Metallic with the following dealer-installed accessories: grille guard (12496369), fog lights (12491842), light bar (12495872) and tubular side steps (12495892).



CONTOURED RUNNING BOARDS
These moulded fibreglass running boards represent a real step up by providing easier access to the interior, while adding a rugged styling detail. They extend from the front wheel opening to the rear wheel opening.
PART NUMBERS: 91175242 (2-Door)
91175241 (4-Door)

HOOD PROTECTOR
In Canada, there are two seasons: winter and bugs. This durable acrylic hood protector helps protect your hood from bugs and road debris. It also is resistant to scratching and discolouration.
PART NUMBER: 12496482

COMMITMENT

Chevy Trucks are renowned for their dependability. That goes beyond the durability of their systems and components.

You can also rely on Chevrolet to provide you with comprehensive, up-to-date information about its vehicles, as demonstrated by this brochure. In addition, Chevrolet is committed to an ownership experience you can count on, through an extensive series of owner support services described below.

To learn even more about Tracker's many features and benefits, please visit our Web site at gmcanada.com, or call our **Customer Communication Marketing Centre** at **1-800-GM-DRIVE** or **1-800-463-7483** (1-800-263-3830 for TDD users).

GM TOTAL™ Warranty. Every new GM car and light-duty truck is backed by the GM TOTAL™ Warranty, 3-year/60,000 km (whichever comes first) which covers complete vehicle repairs, including parts and labour, to correct any defects in material or workmanship occurring during the warranty period. The GM TOTAL™ Warranty requires no deductible. Tires are included. Warranty features include towing, no-charge warranty transfer, 6-year/160,000 km (whichever comes first) corrosion perforation coverage and 8-year/130,000 km (whichever comes first) coverage on catalytic converters and powertrain control modules (PCM). Regular maintenance is not included. Application of additional rust-inhibiting materials is not required under the corrosion coverage and none is recommended. See your dealer for terms of this limited warranty.

GM Roadside Assistance. When you drive away in your new GM car or light-duty truck, the security and convenience of round-the-clock Roadside Assistance is available via a toll-free number usable anywhere in Canada or the United States. During the warranty period, whenever a problem may occur, your Roadside Service Advisor is just a phone call away. Whether it's lock-out assistance, a jump start, a flat tire change, fuel delivery or towing assistance, simply call 1-800-268-6800 and we'll be there to assist you without charge. See your dealer for details.

GM Courtesy Transportation. Your GM dealer may offer courtesy transportation while your new GM vehicle is serviced at your GM dealership for repairs covered under the 3-year/60,000 km GM TOTAL™ Warranty. Certain restrictions apply. See your GM dealer for full details.

GM Protection Plan. GMPP coverage provides you with "Peace of Mind" protection from repair costs (parts and labour), as well as many associated expenses that may occur to your vehicle beyond the GM TOTAL™ Warranty period. Whether you're purchasing or leasing your GM vehicle, there's a GMPP coverage level and plan term to suit your budget and driving needs. Be sure to ask your GM dealer about the many benefits you receive through your purchase of the General Motors Protection Plan, the only Extended Service Plan backed by the resources and commitment of General Motors.

The GM Card. Start your dream rolling with The GM Card®. With The GM Card, your dream of owning a new GM car, truck or van can quickly become a reality. Every time you make a purchase using The GM Card, you earn 5% of that purchase which you can apply towards the Total Purchase Price or lease down payment of your next eligible new GM vehicle*. Earn up to \$500 per Cardholder year† by simply charging your usual purchases on your GM Card. What's more, there is no annual fee.

To receive an application or for full terms and conditions, please see your local GM dealer, TD Bank branch or call 1-800-GM-DRIVE.

* Registered Trademark of General Motors Corporation, TD Bank licensed user.
† See The GM Card Program Rules for details. See your dealer for vehicle eligibility.

GMAC. General Motors Acceptance Corporation of Canada, Limited (GMAC) is a General Motors division that was created specifically to assist GM dealers in marketing new vehicles to qualified GM customers. You can arrange GMAC financing right in your GM dealer's showroom and the terms of your arrangement can be tailored to fit your particular needs. It's a convenient, flexible alternative to a conventional bank loan.

GM SMARTLEASE. GM SMARTLEASE is administered by GMAC as an alternative to traditional financing. Qualified SMARTLEASE customers pay for the portion of the vehicle that is used, rather than paying for the entire vehicle as with traditional financing. Consider these SMARTLEASE benefits: Affordable monthly payments, drive more vehicle for your money, drive a new vehicle more often, no resale risks or trade-in hassles and a guaranteed option-to-purchase price when your lease ends. Most importantly, there are no surprises with SMARTLEASE. See your GM dealer about the benefits of SMARTLEASE. Or call 1-800-GM-DRIVE.

GM Graduate Program. If you're a recent graduate from a recognized college or university, you may qualify for \$1,000 (all taxes included) off on the purchase or lease down payment of the new GM vehicle of your choice.* Anyone graduating from a 3-year university degree program, a 2-year college program or, in Quebec, a 3-year CEGEP D.E.C. (Technique) program between May 1, 1998 and December 31, 2001 can take part. To get credit for your degree, see your GM dealer for full details, or call toll-free 1-800-GM-DRIVE.

* Excluding Saturn, Saab and Isuzu. Offer not to be used in conjunction with \$1,000 GM Card Student Bonus Offer.

GM Mobility Program. If you or your passenger(s) have a physical disability which prevents you from driving or riding in a factory-equipped vehicle, find out about the GM Mobility Program for Persons with Disabilities. You may be eligible for reimbursement of up to \$1,000 (all taxes included) for adaptive equipment you may require for your new GM vehicle. Your GM dealer can also set up complete GMAC financing for you. (SMARTLEASE not eligible.) Beyond that, your GM dealer can provide you with lists of qualified driver assessment centres and mobility equipment installers. Call this toll-free number for more information: 1-800-GM-DRIVE or TDD users, 1-800-263-3830.

GM Accessories. If you want to personalize your vehicle to make it your own, ask your Sales Consultant about genuine GM Accessories. Your GM dealer can supply and install quality GM Accessories specifically engineered for your GM vehicle. When installed at the time of purchase or lease, GM provides GM TOTAL™ Warranty coverage for all dealer-installed GM Accessories.

GM Goodwrench Service. Regular maintenance can help your new vehicle last longer, run better and be more fuel efficient. It can also enhance your resale or trade-in value.

At GM Goodwrench Service, we know your life is busy. So, when it's time for routine maintenance service, we promise to do everything we can to help you get on with your day and to get you back on the road where you want to be. Plus, nobody knows your GM vehicle better than GM Goodwrench Service factory-trained technicians. GM Goodwrench Service is available at select GM dealers.

GM Customer Satisfaction. It's good to know, when you travel long distances, that there are hundreds of GM dealers in Canada, each one ready to provide you with professional service and genuine GM parts. You can phone the GM Customer Communication Marketing Centre toll-free at 1-800-GM-DRIVE or 1-800-463-7483 (TDD users, 1-800-263-3830) to talk with trained representatives regarding any General Motors product or service. The Centre is open Monday through Friday 7:30 a.m. to 11:30 p.m. (EST) and Saturday 7:30 a.m. to 6:00 p.m. (EST). You can also reach us at our Web site at gmcanada.com

A WORD ABOUT THIS BROCHURE

Some of the equipment shown or described throughout this brochure may be available at extra cost.

This brochure is based on the latest information at the time of printing. General Motors of Canada Limited reserves the right to make changes at any time, without notice, to specifications, equipment, colours, models, availability, programs and services. Your Chevrolet dealer is the best source for up-to-date information. General Motors reserves the right to lengthen or shorten the model year for any product, for any reason, or to start and end model years at different times.

A WORD ABOUT ASSEMBLY
Chevrolets are equipped with engines and components produced and assembled by different operating units of General Motors, its subsidiaries and suppliers and these engines and components may change or be obtained from different sources from time to time. All such engines and components are approved for use in Chevrolets. Certain equipment ordered may be unavailable at the time of assembly and we suggest that you verify that your vehicle includes the equipment you ordered, or if there are changes, that they are acceptable to you.

General Motors, GM, the GM emblem, the GM Canada Web site address, the GM Accessories logo, Chevrolet, the Chevrolet emblem, Astro, Blazer, Express, Freedom, SMARTLEASE, S-10, Silverado, Suburban, Tahoe, the TOTAL Warranty and Tracker are all Trademarks of the General Motors Corporation and/or General Motors of Canada Limited.

GMAC is a registered Trademark of the General Motors Acceptance Corporation.

Printed in Canada, August 2000.

© Copyright 2000 General Motors of Canada Limited



General Motors of Canada Limited

SPECIFICATIONS

STANDARD AND OPTIONAL EQUIPMENT

SAFETY AND SECURITY	2-DR	4-DR
Air bags - Next Generation, driver and front passenger, frontal	S	S
Brake/transmission shift interlock (automatic transmission only)	S	S
Door locks - rear door, child-security	-	S
Headlights - Daytime Running Lights, automatic light control	S	S
Safety belts - front shoulder, height-adjustable	S	S
Tether anchors - child-seat, rear seat	S	S

MECHANICAL	2-DR	4-DR
Battery - Delco Freedom II with run-down protection	S	S
Brakes - 4-wheel anti-lock braking system (ABS)	0	0
Brakes - power, front disc/rear drum	S	S
Drive - 4-wheel with 2-speed transfer case, shift-on-the-fly	S	S
Engine - 1.6-litre 16-valve L4 with MFI Horsepower - 97 @ 5200 rpm Torque - 103 lb.-ft. @ 4000 rpm	S	-
Engine - 2.0-litre DOHC L4 with MFI Horsepower - 127 @ 6000 rpm Torque - 134 lb.-ft. @ 3000 rpm	0	S
Engine - block heater	0	S
Exhaust system - aluminized stainless steel muffler and tailpipe	S	S
Hubs - auto-locking, front	S	S
Steering - power, rack-and-pinion	S	S
Suspension - front independent/rear live axle	S	S
Transmission - 5-speed manual with overdrive	S	S
Transmission - 4-speed automatic with overdrive	0*	0

* Requires 2.0-litre DOHC L4 engine.

EXTERIOR	2-DR	4-DR
Bumpers - charcoal	S	S
Convertible top - manual, fold-and-stow feature, with clear zip-out side and rear windows	S	-
Glass - tinted, solar-absorbing	S	S
Mirrors - dual, left and right manual control, black	S	S
Mouldings - bodyside, graphite	S	S
Roof rack - adjustable crossbars	-	0
Skid plate - fuel tank	S	S
Spare tire cover - vinyl	0	0
Tailgate - swing-open, lockable	S	S
Tires - P205/75R15 all-season blackwall	S	S
Tires - full-size spare with lock and disc-type cover	S	S
Tow hooks - front/rear, one each	S	S
Wheels - 15" x 5.5" styled steel (A)	S	S
Wheels - 15" x 6.0" cast-aluminum (B)	0	0
Windshield wipers - 2-speed with variable delay (intermittent)	S	S
Wiper/washer - rear window	-	0

* Includes weight of trailer, cargo, passengers and equipment.

All towing recommendations are subject to change. Trailer tongue load should be 10% of the maximum trailer weight but should not exceed the load rating specified for that vehicle, engine or hitch combination.

INTERIOR	2-DR	4-DR
Air conditioning	0	0*
Assist handles - front and rear	S	S
Cargo security cover and cargo convenience net	-	S
Console - front floor with storage, dual cupholders and rear ashtray	S	S
Convenience Package - includes power windows, power door locks, power outside rearview mirrors and remote keyless entry system	0	0
Cruise control - electronic with resume, coast and decelerate/accelerate features	0	0
Defogger - electric rear-window with timer	-	S
Floor mats - front and rear, carpeted	S	S
Head restraints - front and rear seat, adjustable	S	S
Heat ducts - rear seat, floor	S	S
Instrumentation - analogue cluster (includes speedometer, tachometer, coolant temperature, fuel gauges and LCD odometer with dual trip odometer)	S	S
Light - 3-position dome	S	S
Lighting - entry delay	S	S
Map pockets - front and rear door	S	S
Mirror - inside, rearview with dual reading lights	S	S
Power outlet - auxiliary, 12-volt	S	S
Storage - cargo compartment, lockable, removable	0**	-
Sunshades - LH and RH padded with extensions; RH with vanity mirror	S	S
Tilt adjustable steering column	0	0

* Includes cabin filtration system. ** Requires Convenience Package.

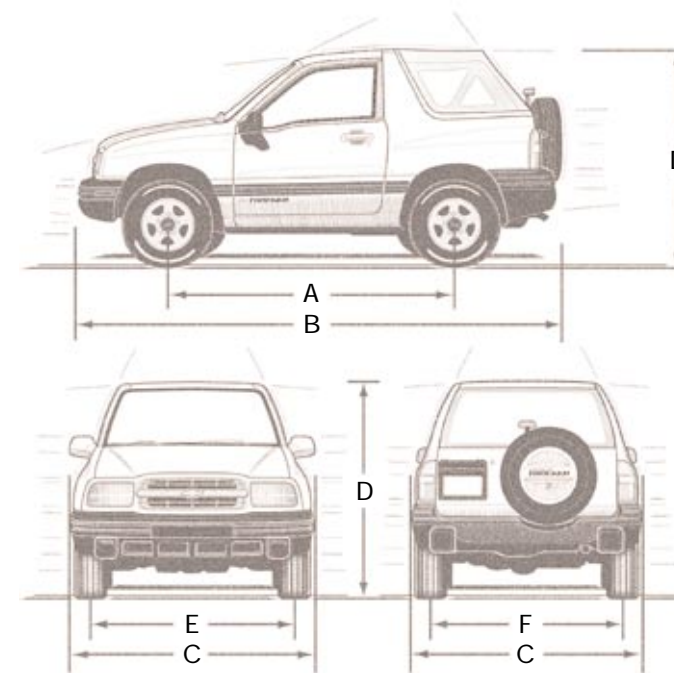
SEATS	2-DR	4-DR
Cloth reclining bucket seats, with seatback pockets	S	-
Custom cloth reclining bucket seats, with seatback pockets	-	S
Easy-entry front passenger feature	S	-
Seatback - rear, full-folding	S	-
Seatbacks - rear, split-folding	-	S

SPECIAL OPTION PACKAGES	2-DR	4-DR
Special Package - 4-speed automatic transmission, 15" x 6.0" cast-aluminum wheels, AM/FM stereo with CD player, tilt adjustable steering column	0	-
Basic Package - includes 4-speed automatic transmission, 15" x 6.0" cast-aluminum wheels, rear window wiper/washer, tilt adjustable steering column	-	0
Convenience and Comfort Package - includes air conditioning, cruise control, power windows, power door locks, power outside rearview mirrors and remote keyless entry system	-	0

SOUND SYSTEMS	2-DR	4-DR
All Tracker sound systems include an electronically tuned Delco AM/FM stereo with seek up/down, digital clock and 4-speaker sound system		
AM/FM stereo	S	S
AM/FM stereo, cassette tape player and Auto Tone Control	0	0
Same as above except a CD player replaces the cassette tape player	0	0

TOWING	2-DR	4-DR
Trailer Classification	Light	Light
Gross Trailer Weight* kg (lb.)	454 (1000)	680 (1500)

DIMENSIONS



EXTERIOR, MM (IN.)	2-DOOR CONVERTIBLE	4-DOOR HARDTOP
Wheelbase (A)	2200 (86.6)	2480 (97.6)
Length (B)	3855 (151.8)	4135 (162.8)
Width (C)	1710 (67.3)	1710 (67.3)
Height (D)	1690 (66.5)	1685 (66.3)
Front tread (E)	1460 (57.5)	1460 (57.5)
Rear tread (F)	1460 (57.5)	1460 (57.5)

INTERIOR, MM (IN.) FRONT/REAR		
Head room	1038/1003 (40.8/39.5)	1013/1006 (39.9/39.6)
Leg room	1051/912 (41.4/35.9)	1051/912 (41.4/35.9)
Shoulder room	1345/1336 (53.0/52.6)	1341/1336 (52.8/52.6)
Hip room	1284/1188 (50.6/46.8)	1287/1188 (50.7/46.8)

CAPACITIES/WEIGHT		
Cargo - L (cu. ft.), - rear seat up - rear seat stowed	290 (10.2) 954 (33.7)	572 (20.2) 1266 (44.7)
Fuel tank, L (imp. gal.)	56 (12.3)	66 (14.5)
Curb weight (estimated), kg (lb.)	1235 (2722)	1355 (2987)

COLOURS & TRIM

INTERIOR FABRICS



2-Door Tracker

4-Door Tracker

COLOUR AND TRIM AVAILABILITY

EXTERIOR COLOUR AVAILABILITY	2-DR	4-DR
18 - Silver Metallic	•	•
19 - Black Licorice	•	•
29 - Bright Blue Metallic	•	•
35 - Medium Green Metallic	•	•
47 - Dark Blue Metallic	•	•
53 - Sunset Red Metallic	•	•
74 - Wildfire Red	•	•
96 - White	•	•

EXTERIOR ROOF FABRICS - CONVERTIBLE



Black

White

Tan

EXTERIOR COLOURS



Colours may not be exactly as illustrated due to restrictions of printing process. Please see your sales consultant for specific colour and model availability.



Chevy Truck style, performance and reliability come in many different packages to satisfy the needs of a wide range of drivers. Chances are you'll find just the Chevy Truck for you from among the following:



TRACKER



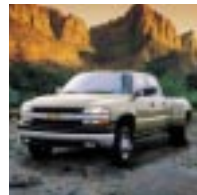
S-10



BLAZER



**SILVERADO
1500 & 2500**



**SILVERADO
2500HD & 3500**



**TAHOE &
SUBURBAN**



ASTRO



EXPRESS

