

DEPEND ON HYUNDAI QUALITY.

At Hyundai Auto Canada Corp., we believe our customers' needs come first. That's why we've invested billions of dollars worldwide in research, design, safety, testing and manufacturing. And with numerous third-party awards for quality, reliability and value, we can't help but be proud. But in the end, it's still about you, our customer. Simply put, we're committed to over-delivering on all your expectations so we can bring you the vehicle you need, as well as the vehicle you want. To learn why Hyundai is quickly gaining a reputation for outstanding quality, visit hyundaiquality.ca.



2007 ELANTRA



007SA-L200C

The Hyundai names, logos, product names, feature names, images and slogans are trade marks owned by Hyundai Auto Canada Corp.



WHAT WILL YOUR EXCUSE BE? You think, are we running low on milk and bread? Maybe the kids need a ride to the mall. Suddenly someone else mentions that they may not have enough paint to get the job done and you're off to the hardware store. The truth is, when you find a car that's fun to drive and fits your life perfectly, you'll come up with just about any reason to drive.

That car is the all-new 2007 Elantra. It's been completely redesigned to offer class-leading interior space, a long list of premium amenities, advanced safety features and a more comfortable ride. Because at Hyundai, we believe the best excuse to drive should be the drive itself.

FOR THE LOVE OF THE DRIVE.





EXPECT TO ATTRACT **ATTENTION.**



Even before you get behind the wheel of the totally redesigned 2007 Elantra, you can tell this vehicle is a thrill to drive. Expressive lines swoop across its body seamlessly, thanks to bodycolour door handles, mirrors, bumpers and rear garnish. Mix in tinted windows and available 16" alloy wheels and you could find your heart rate rising before you even leave the driveway.



Elantra's triple spray wiper nozzles ensure your windshield stays clean for a clear view of the road ahead.



The brighter illumination of Elantra's clear halogen headlights makes it safer to drive at night.



Integrated fog lights, standard on the GL Sport and GLS models, enhance driver visibility in the worst weather.

Tinted windows are a cool complement to Elantra's clean modern lines and come equipped on all models.





Lower your foot and you'll instantly feel excitement as the 2.0L 4-cylinder 16-valve engine comes to life and cranks out a spirited 138 horsepower. And as the 2007 Elantra's power raises your heartbeat and propels you toward your destination, its exceptional fuel efficiency and low emissions will leave you smiling as you pass the pumps.

POWER - WITH A CONSCIENCE.

The advanced power-assisted rack-and-pinion steering instantly responds to your every move giving the all-new Elantra a more agile driving feeling.

A 4-speed automatic transmission comes standard on Elantra GLS and is optional on all other models, which come equipped with a 5-speed manual transmission.



PERFORMANCE

The 2007 Elantra is powered by a 2.0L, 138 hp, 16-valve, DOHC, 4-cylinder engine with Continuously Variable Valve Timing (CVVT).



Fully independent front suspension with stabilizer bar and multi-link rear suspension with stabilizer bar ensure you enjoy a smooth ride every time you drive.





Settle in behind the wheel of the 2007 Elantra and you'll discover something you wouldn't expect to find in a compact car – space. In fact, it's so roomy that the EPA classifies it as a mid-size car. Add available leather seating, an available AM/FM/CD/MP3 audio system with six speakers and an optional power sunroof to achieve the perfect blend of style and comfort.

SPACE THAT'S A CLASS ABOVE.



Control your tunes without taking your hands off the wheel thanks to the convenience of steering wheel-mounted audio controls available on Elantra GL Comfort Plus, GL Sport & GLS.



INTERIOR

Sleek metal-grain accents add unmistakable style to the front console.



With more space than most cars in its class, the 2007 Elantra has room to carry all types of cargo.

Let the comfort of heated front seats welcome you on cold mornings. They come standard on GL Comfort, GL Comfort Plus, GL Sport and GLS models.



STRETCH OUT AND ENJOY THE RIDE.



Ensuring your peace of mind is our main goal at Hyundai. That's why the 2007 Elantra is loaded with advanced safety features. Every model comes with dual front airbags, while GL Comfort Plus, GL Sport and GLS models offer the added safety of front active head restraints to keep you safe in the event of a collision.



You'll find dual front airbags equipped in all models, while GL Comfort Plus and GLS models have the added safety of standard front seat-mounted side-impact and roof-mounted side-curtain airbags.

The LATCH child-seat tether anchors ensure accurate and easy installation and make Elantra the perfect vehicle for growing families.



SAFETY



Elantra's ultra-safe body design includes safety cage construction, steel side-impact door beams and built-in front and rear crumple zones.



Elantra GL Comfort Plus, GL Sport and GLS models come with an Anti-lock Braking System (ABS) with Electronic Brake Force Distribution (EBD) to prevent tires from slipping due to wheel locking.

SET YOUR MIND AT EASE.

GENUINE HYUNDAI
ACCESSORIES

SIDE VISORS

Sleek and sporty, these side visors let you enjoy fresh air even when it's raining.



REAR SPOILER

Add a touch of style and sportiness to your vehicle with an aerodynamic rear spoiler. It also incorporates a brake light for added visibility and safety.



SPORT SHIFTER KNOB

Performance enthusiasts will love the feel of the sleek sport shifter knob.



PLASTIC HOOD PROTECTOR

Prevent dents and scratches caused by road and vehicle debris with an attractive plastic hood protector.



ROOF RACKS

This durable, quick-locking roof rack system lets you transport cargo easily, without sacrificing interior room.



SPORT PEDAL KIT

Customize your vehicle with a set of race-inspired aluminium sport pedals.



COLOURS

Our vivid palette of exterior colours is the perfect way to complete your Elantra. Explore the options and choose the one that best reflects your personal style.

- BLACK PEARL 
- INDIGO BLUE 
- MOONLIGHT BLUE 
- CARBON GREY 
- CONTINENTAL SILVER 
- REDFIRE PEARL 
- LAGUNA SAND 



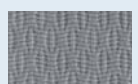
Beige Leather



Beige Cloth



Grey Leather



Grey Cloth



Black Leather



Black Cloth

Colour availability varies by model. Due to print production processes, the colours shown throughout this brochure may vary slightly from the actual hue. See your dealer for model applications and to view the 2006/2007 Hyundai Colour Selector. Specifications and equipment shown in this brochure may vary according to locale. Hyundai Auto Canada Corp. reserves the right to change or modify equipment and specifications at any time without prior notice.

MAKE ELANTRA YOUR OWN.

MODEL FEATURES

SPECIFICATIONS



ELANTRA GL

<p>GL STANDARD EQUIPMENT: 2.0 L, 138 hp, 16-valve DOHC, 4-cylinder Engine with Continuously Variable Valve Timing (CVT) 5-speed Manual Transmission 15-inch Steel Wheels 60/40 Split Fold-down Rear Seat AM/FM/CD/MP3 4-speaker Audio System Bodycolour Bumpers, Door Handles, Exterior Mirrors and Rear Garnish Carpeted Floor Mats Child-proof Rear Door Locks Chrome Front Grille Cloth Seats Driver's and Front Passenger's Multi-adjustable Seats Driver's and Front Passenger's Vanity Mirrors</p>	<p>Dual Front Airbags Energy-absorbing Steering Column Front and Rear Crumple Zones Front Centre Console with Dual Cupholders and Storage Box Front Disc/Rear Drum Brakes Front Seatbelt Pretensioners and Force Limiters In-glass Antenna MacPherson Struts Front Suspension with Stabilizer Bar Map Lights Multi-link Rear Suspension with Stabilizer Bar Power-Assisted Rack-and-Pinion Steering Power Front Windows Rear Seat Adjustable Headrests Rear Window Defroster with Timer</p>	<p>Remote Fuel Filler Door, Trunk, Hood Releases Tilt Steering Wheel Tinted Glass Unibody Construction Variable Intermittent Wipers OPTIONAL AIR PACKAGE: Air Filtration System Impact-sensing Driver Door Unlock Non-CFC Air Conditioning with Manual Temperature Controls Power Door Locks Power Front and Rear Windows with Driver's Auto-down</p>
---	--	--



ELANTRA GL COMFORT

<p>GL COMFORT INCLUDES ALL GL EQUIPMENT WITH AIR OPTION PACKAGE PLUS: AM/FM/CD/MP3 6-Speaker Audio System Cruise Control Front Centre Console with Dual Cupholders, Armrest and Storage Box Front Windshield Shade Band Heated Front Seats</p>	<p>Power Heated Adjustable Exterior Mirrors Rear Centre Armrest with Cupholders Rear Centre Headrest Remote Keyless Entry with Alarm Ignition Immobilization System GL COMFORT PLUS INCLUDES ALL GL COMFORT EQUIPMENT PLUS: 4-wheel Disc Brakes</p>	<p>Anti-lock Braking System (ABS) with Electronic Brake Force Distribution (EBD) Active Head Restraints Steering Wheel-mounted Audio Controls Front Seat-mounted Side-impact and Roof-mounted Side-curtain Airbags OPTIONAL ON ALL GL MODELS: 4-speed Automatic Transmission with Overdrive</p>
--	--	---



ELANTRA GLS

<p>GL SPORT INCLUDES ALL GL COMFORT PLUS STANDARD EQUIPMENT PLUS: 16-inch Alloy Wheels Aluminium Footrest and Pedals Fog Lights Leather-wrapped Steering Wheel and Gear Shift Knob Power Sunroof</p>	<p>Rear Spoiler Trip Computer Excludes: Front Seat-mounted Side-impact and Roof-mounted Side-curtain Airbags. GLS INCLUDES ALL GL SPORT EQUIPMENT PLUS: 4-speed Automatic Transmission with Overdrive Driver's and Front Passenger's Illuminated Vanity Mirrors with Extensions</p>	<p>Front Seat-mounted Side-impact and Roof-mounted Side-curtain Airbags Leather Seats Non-CFC Air Conditioning with Automatic Temperature Control Telescoping Steering Wheel Excludes: Rear Spoiler, Aluminium Footrest and Pedals</p>
--	--	---

PERFORMANCE		GL	GL COMFORT	GL COMFORT PLUS	GL SPORT	GLS
Engine	Type			4-cylinder 16-valve Inline CVT DOHC		
	Displacement			2.0L (1,975 cc)		
	Bore and Stroke (mm)			82.0 x 93.5		
	Horsepower @ RPM			138 @ 6,000		
	Torque lb-ft @ RPM			136 @ 4,600		
Transmission Type	5-speed Manual	S	S	S	S	-
	4-speed Automatic	O	O	O	O	S
Brakes	Front: Power-assisted Ventilated Discs	S	S	S	S	S
	Rear: Drum	S	S	-	-	-
	Rear: Power-assisted Solid Discs	-	-	S	S	S
Electrical System	Battery			60 AH		
Alternator Ignition System	Electronic			90 AMP		
Frame Construction				Unitized Body		
Fuel Delivery System				Electronic Multi-point Fuel Injection (MPI)		
Steering	Type			Power-assisted Rack-and-Pinion		
	Overall Ratio			15.37:1		
Suspension	Front			MacPherson Struts, Coil Springs with Stabilizer Bar		
	Rear			Multi-link with Stabilizer Bar		
Tires	P195/65TR15	S	S	S	-	-
	P205/55HR16	-	-	-	S	S
Wheels	7-spoke 5.5J x 15" Steel	S	S	S	-	-
	5-spoke 6.0J x 16" Alloy	-	-	-	S	S
Dimensions	Wheelbase	Exterior Dimensions (mm)		Interior Dimensions (mm)		
	Length	2,650		Head Room:	1,015	955
	Height	4,505		Leg Room:	1,105	930
	Width	1,480		Shoulder Room:	1,412	1,400
	Track: Front	1,775		Hip Room:	1,377	1,372
	Track: Rear	15" wheels 1,543				
		15" wheels 1,541				
Fuel	Fuel Consumption Estimates (L/100 km)			City		Highway
	5-speed Manual Transmission with Overdrive			8.4		6.0
	4-speed Manual Transmission with Overdrive			8.3		6.0
Fuel Tank Capacity (L)				53		

S = Standard A = Air Package O = Optional - = Not Available

SPECIFICATIONS

SPECIFICATIONS

INTERIOR	GL	GL COMFORT	GL COMFORT PLUS	GL SPORT	GLS
Air Conditioning	Non-CFC with Manual Temperature Control A	S	S	S	-
	Non-CFC with Automatic Temperature Control	-	-	-	S
Air Filtration System	A	S	S	S	S
Audio Systems	AM/FM/CD/MP3 with four Speakers S	-	-	-	-
	AM/FM/CD/MP3 with six Speakers	-	S	S	S
Carpeted Floor Mats	S	S	S	S	S
Console	Front Centre with Dual Cupholders and Storage Box S	-	-	-	-
	Front Centre with Dual Cupholders, Armrest and Storage Box	-	S	S	S
	Rear Centre Armrest with Cupholders	-	S	S	S
Cruise Control	-	S	S	S	S
DC Power Outlet	2 x 12V	S	S	S	S
Defroster	Rear Window, Electronic Timer	S	S	S	S
Door Trim	Integrated Map Pocket S	S	S	S	-
	Leather Insert with Map Pocket	-	-	-	S
Gauges	Speedometer, Tachometer, Trip Odometer, S	S	S	S	S
	Trip Computer	-	-	-	S
Illumination	Map Lights, Dome Light, Glove Compartment, Cargo Area S	S	S	S	S
Leather Trim	Leather-wrapped Steering Wheel and Gear Shift Knob -	-	-	-	S
Mirrors	Driver and Front Passenger Vanity (Illuminated and Extensions*) S	S	S	S	S*
	Inside Rearview, Manual Day/Night	S	S	S	S
Power Door Locks	Front A	S	S	S	S
Power Windows	Front and Rear with Driver's Auto-down S	-	-	-	-
Remote Releases	Hood, Trunk, Fuel Filler Door S	S	S	S	S
Seat Trim	Cloth S	S	S	S	-
	Leather	-	-	-	S
Seats	Driver's and Front Passenger's Multi-adjustable (Height Adjuster*) S	S*	S*	S*	S*
	Front: Heated	-	S	S	S
	Rear: 60/40 Split-folding	S	S	S	S
Steering Wheel	Mounted Audio Controls -	-	S	S	S
	Telescoping	-	-	-	S
	Tilt	S	S	S	S

S = Standard A = Air Package O = Optional - = Not Available

EXTERIOR	GL	GL COMFORT	GL COMFORT PLUS	GL SPORT	GLS
Antenna	In-glass	S	S	S	S
Bumpers	Bodycolour	S	S	S	S
Fog Lights	Reflector Type	-	-	-	S
Glass	Tinted	S	S	S	S
	Windshield Shade Band	-	S	S	S
Headlights	Clear Lens Halogen	S	S	S	S
Outside Mirrors	Bodycolour S	S	S	S	S
	Power Heated Adjustable	-	S	S	S
Spoiler	Rear	-	-	-	S
Sunroof	Power	-	-	-	S
Wipers	Variable Intermittent	S	S	S	S

SAFETY	GL	GL COMFORT	GL COMFORT PLUS	GL SPORT	GLS
Airbags	Dual Front ¹ S	S	S	S	S
	Front Seat-mounted Side-impact and Roof-mounted Side-curtain	-	-	-	S
Brakes	Anti-lock Braking System (ABS) and S	-	S	S	S
	Electronic Brake Force Distribution (EBD)	-	-	-	S
Child Safety	Child-proof Rear Door Locks S	S	S	S	S
	Child-seat LATCH System	S	S	S	S
Door Locks	Remote Keyless Entry with Alarm -	S	S	S	S
Ignition Immobilization System	-	S	S	S	S
Impact-Sensing Driver Door Unlock	A	S	S	S	S
Front Active Head Restraints	-	-	S	S	S
Restraint Systems	Front: 3-Point Seat Belt with Adjustable Anchors S	S	S	S	S
	Rear: 3-Point Seat Belt (3)	S	S	S	S

WARRANTY	GL	GL COMFORT	GL COMFORT PLUS	GL SPORT	GLS
Coverage	5-year/100,000 km Comprehensive Limited Warranty ¹ S	S	S	S	S
	5-year/100,000 km Powertrain Warranty	S	S	S	S
	3-year/Unlimited km Roadside Assistance Program	S	S	S	S

S = Standard A = Air Package O = Optional - = Not Available

All Hyundai warranties have no deductible.
¹ Hyundai's Comprehensive Limited Warranty covers most vehicle components against defects in workmanship under normal use and maintenance conditions.
² Includes fuel delivery service, flat tire changing, lock-out service, towing service and more. Just one toll-free call away, 24 hours a day.
³ The Supplemental Restraint (airbag) System (SRS) is designed to work with the 3-point seatbelt system. The SRS deploys in certain frontal and/or side-impact conditions where significant injury is likely. The SRS is not a substitute for seatbelts which should be worn at all times. Children under the age of 13 should be restrained securely in the rear seat. NEVER place a rear-facing child seat in the front seat of a vehicle with a passenger-side airbag.