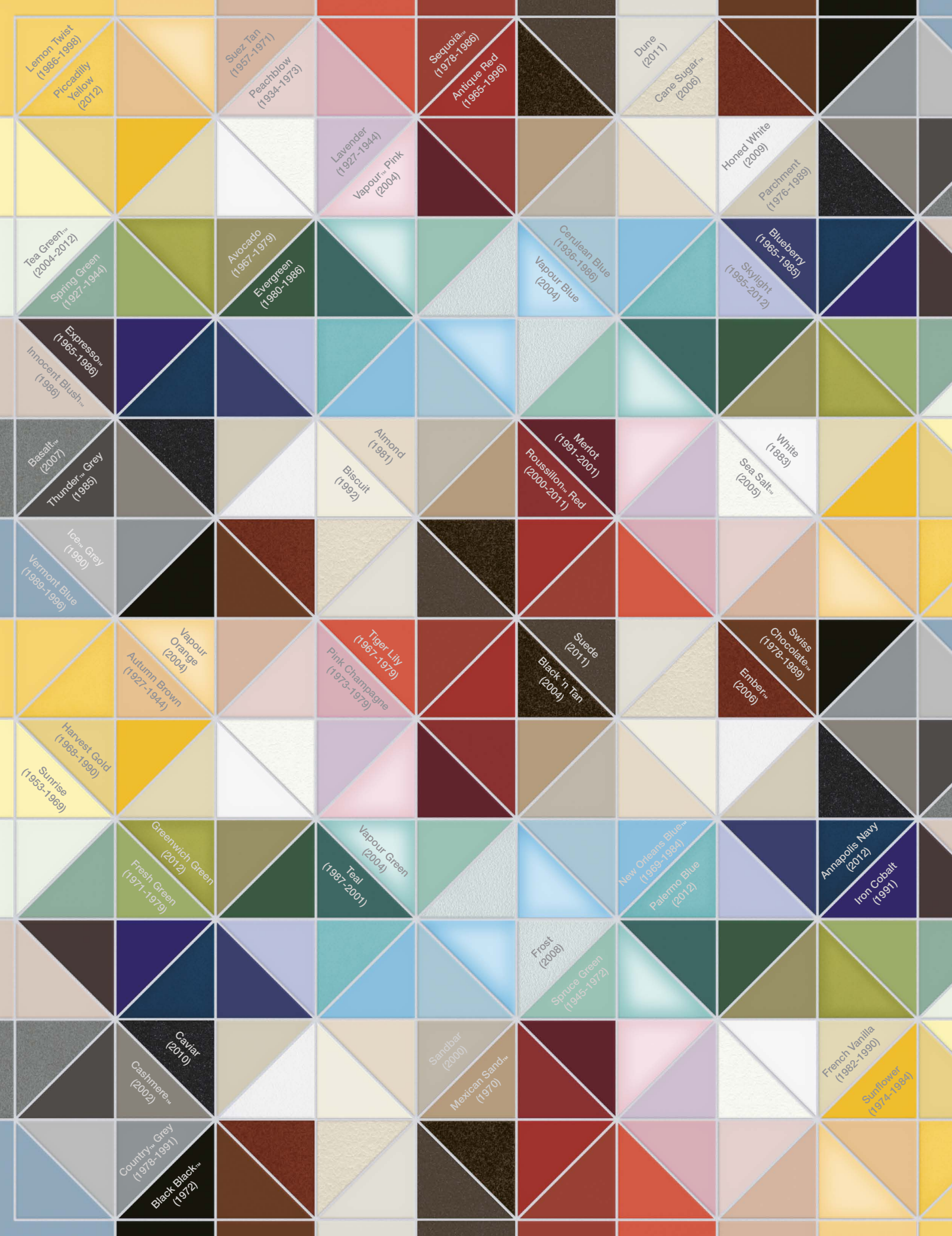




LONG LIVE COLOR

THE BOLD LOOK
OF **KOHLER**®



Lemon Twist
(1986-1998)
Piccadilly
Yellow
(2012)

Suez Tan
(1957-1971)
Peachblow
(1934-1973)

Sequoia™
(1978-1986)
Antique Red
(1965-1996)

Dune
(2011)
Cane Sugar™
(2006)

Lavender
(1927-1944)
Vapour™ Pink
(2004)

Honed White
(2009)
Parchment
(1976-1989)

Tea Green™
(2004-2012)
Spring Green
(1927-1944)

Avocado
(1967-1979)
Evergreen
(1980-1986)

Cerulean Blue
(1936-1986)
Vapour Blue
(2004)

Blueberry
(1965-1985)
Stylight
(1995-2012)

Espresso™
(1965-1986)
Innocent Blush™
(1986)

Almond
(1981)
Biscuit
(1992)

Merlot
(1991-2001)
Roussillon™ Red
(2000-2011)

White
(1883)
Sea Salt™
(2005)

Basalt™
(2007)
Thunder™ Grey
(1985)

Ice™ Grey
(1990)
Vermont Blue
(1989-1996)

Vapour
Orange
(2004)
Autumn Brown
(1927-1944)

Tiger Lily
(1967-1979)
Pink Champagne
(1973-1979)

Suede
(2011)
Black 'n Tan
(2004)

Swiss
Chocolate™
(1978-1989)
Ember™
(2006)

Harvest Gold
(1988-1990)
Sunrise
(1953-1969)

Greenwich Green
(2012)
Fresh Green
(1971-1979)

Vapour Green
(2004)
Teal
(1987-2001)

New Orleans Blues™
(1969-1984)
Palermo Blue
(2012)

Annapolis Navy
(2012)
Iron Cobalt
(1991)

Frost
(2008)
Spruce Green
(1945-1972)

Caviar
(2010)
Cashmere™
(2002)

Sandbar
(2000)
Mexican Sand™
(1970)

French Vanilla
(1982-1990)
Sunflower
(1974-1984)

County™ Grey
(1976-1991)
Black Black™
(1972)

Color Index



White (0)



Honed White (HW1)



Dune (NY)



Earthen White (W2)



Biscuit (96)



Innocent Blush™ (55)



Sandbar (G9)



Vapour™ Blue (KC)



Vapour Pink (KF)



Vapour Orange (KE)



Vapour Green (KG)



Almond (47)



Mexican Sand™ (33)



Cashmere™ (K4)



Iron Cobalt (30)



Ice™ Grey (95)



Suede (20)



Thunder™ Grey (58)



Caviar (FP)



Black Black™ (7)

Dimensional Color Index



Sea Salt™ (FF)



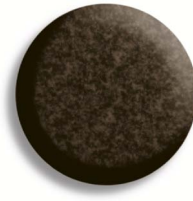
Cane Sugar™ (FD)



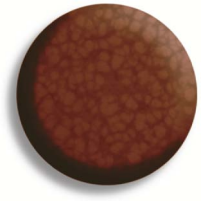
Frost (FE)



Basalt™ (FT)



Black 'n Tan (KA)



Ember™ (RR)



Piccadilly Yellow (J14)



Greenwich Green (J15)



Palermo Blue (J16)



Annapolis Navy (J17)

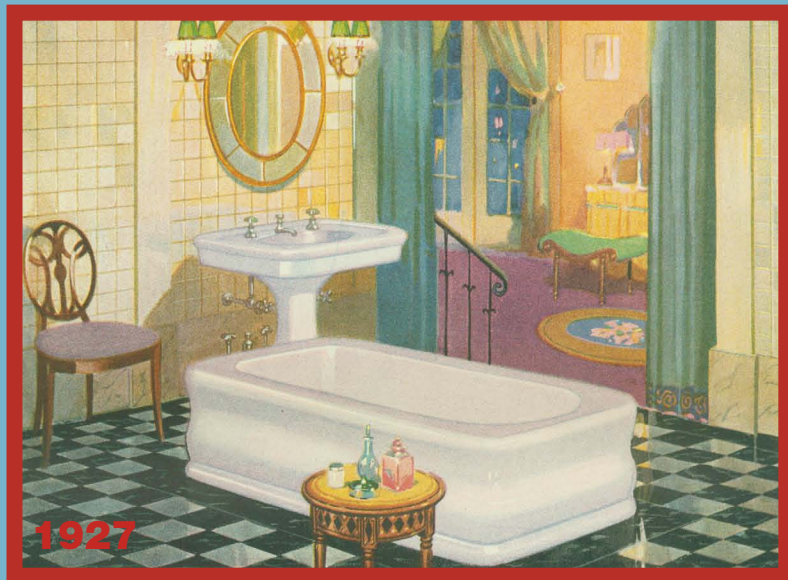
Jonathan Adler
Special Edition
Fashion Colors

LONG LIVE COLOR

Color makes the world go 'round. Color lets us show off our personalities and stand out from the crowd. Color adds vibrancy and energy that can bring an entire home to life. And color turns blah into hoorah! So be bold. Be original. Be colorful!



Deerfield® under-mount double equal kitchen sink in Frost (K-5815-5U-FE)
Cruette® pull-down kitchen faucet in Oil-Rubbed Bronze (K-780-2BZ)



1929

Designed by Ely Jacques Kahn, Architect, New York. Plumbing fixtures, with their metal fittings, designed and executed by Kohler of Kohler

In the Metropolitan Museum of Art
—Exhibition of a modern bath and dressing room

THE new importance of the bathroom as a place of beauty in the modern home could hardly be more strikingly emphasized than it is by this room by Mr. Ely Jacques Kahn in the current Exhibition of American Industrial Art at the Metropolitan Museum, New York.

That the bathroom was chosen as one of the typical rooms to be shown in the internationally important exhibition is in itself an eloquent fact. The manner in which this room unites artistry with logical simplicity demonstrates the wisdom of the choice.

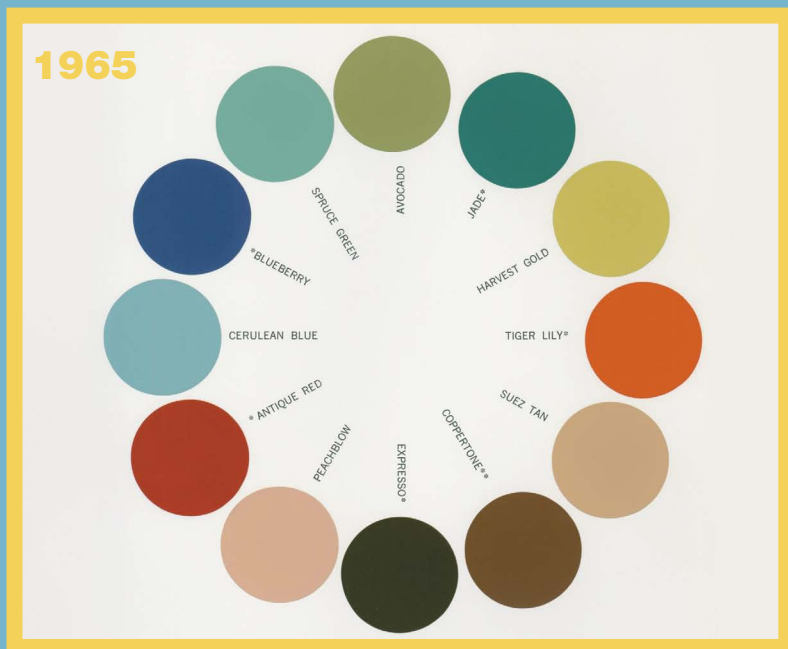
The walls are of glass. The floors are of special yielding rubber. Radiators are recessed behind tiled grilles, and over their warmth hang the towels. Such thoughtful details throughout illustrate how comfort parallels beauty.

Into this setting are introduced a Kohler bath and lavatory of gleaming black, with chromium-plated fittings—faucets, handles, and escutcheons—also of Kohler make, in the graceful *Cellini* design. These Kohler contributions are in patterns available to all. Kohler fixtures of modern style and beauty—in lovely color or lustrous white—are made for simplest bathrooms as well as costly ones. Write to Kohler Co., Kohler, Wis., for a free 72-page book, in color, showing fixtures for bathrooms, kitchens, and laundries, with color schemes, floor plans, and prices.

KOHLER Co. Founded 1873 • Branches in Principal Cities • Shipping Point, Sheboygan, Wis.

KOHLER of KOHLER
Plumbing Fixtures

©1929, Kohler Co.



1967

THE BOLD LOOK OF KOHLER.

Bold colors! Including the colors of the year—new **WINE GOLD!** Bold design! A new hot bathtub, the new **Cellini**. And a dressing room that qualifies as a bedroom. See **Bold! The Bold look of Kohler!**

KOHLER of KOHLER


As I See It #4 in a photographic series by Erwin Olaf

Temptation is sweet. Soft delicious Mispore colors on the **Damiano**, **Washing Pool**, **Lavatory**. Why stop at one!

1800-KOHLER
Kohler.com

2004

THE BOLD LOOK OF KOHLER



1927 Kohler Co. introduces Old Ivory, Autumn Brown, Horizon Blue, Spring Green and Lavender—the industry's first colors available on plumbing products.

1929 An industrial design exhibit at the Metropolitan Museum of Art in New York City features KOHLER® fixtures in black – quite a design statement for the time.

1965 Kohler Co. adds bright, lively accent colors to the KOHLER color palette – another industry first.

1967 Kohler Advertising Manager, Armond “Bud” Grube, captures the essence of bold KOHLER design and color with the tagline THE BOLD LOOK OF KOHLER®.

2004 Vapour™ colors are introduced to the KOHLER color palette, as are the first “dimensional” colors which feature textured, three-dimensional color.

2012 Kohler partners with world-renowned designer, and all-around color evangelist Jonathan Adler to launch four new colors available on select KOHLER enameled cast iron kitchen and bathroom sinks.



EXCLAMATION MARKS OF COLOR

Designer Jonathan Adler says the goal should be to pepper every room in the house with little surprises and exclamation marks of color. “It’s the surprise factor that makes color work.”

Adding an exclamation mark of color (as well as a great conversation piece) is as simple as replacing your sink with a sink crafted in any one of our KOHLER colors. Once you have a colorful KOHLER® sink as the anchor in the room, you can accentuate it with little pops of complementary colors in the curtains, walls or even furniture.

KOHLER colors are available on products in a wide variety of materials, including enameled cast iron. KOHLER enameled cast iron alone provides a number of gorgeous hues to choose from, and because each piece is crafted in our foundry, you know it will stand up beautifully to life’s daily wear and tear.



Scan here to see how to make
your kitchen or bathroom pop with color.

KOHLER COLORS

Setting trends for 2012 and 2013.



“The BLUE family is huge in 2012. It’s relaxing and a nice continuation of the turquoise from years past. Start by finding color inspiration from works of art that move you or family heirlooms you can’t part with. The nostalgia and personal connection you experience through a palette will surely stand the test of time and help transform your space.”

~Sonu Mathew, Senior Interior Designer at Benjamin Moore & Co.



“GREY is the new chocolate brown and is now my favorite color. YELLOW is becoming more and more popular. It’s a crowd divider, but that’s good. The general color trend is a move toward bolder, crisper colors as a reflection of the ‘anything goes’ culture we live in now.”

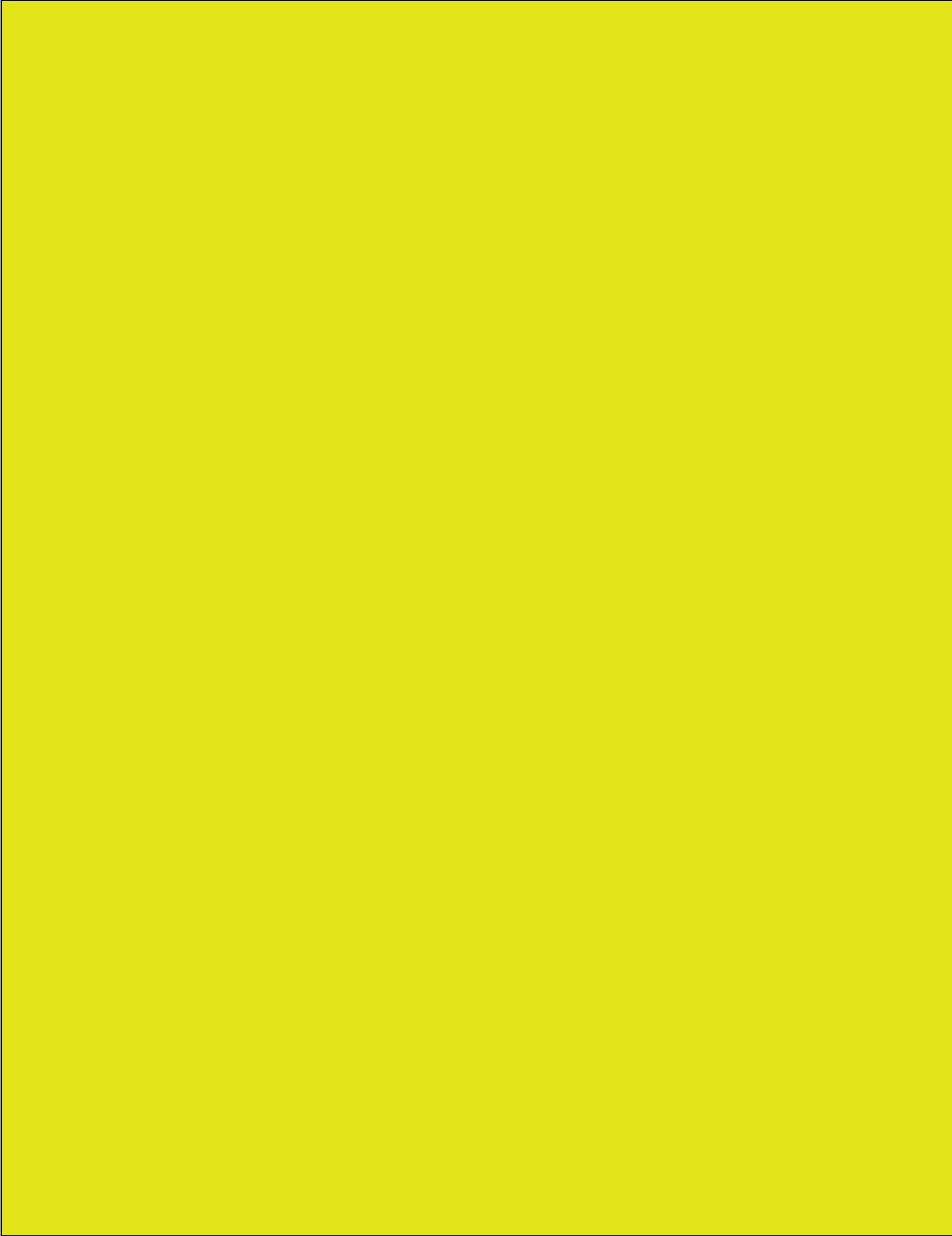
~Jonathan Adler, Designer

WE
LOVE
COLOR

FEATURING

JONATHAN ADLER

THE BOLD LOOK
OF **KOHLER**®





Riverby® under-mount single-bowl kitchen sink with bottom bowl rack in Greenwich Green (K-5871-5UA3-J15)

Purist® single-handle kitchen faucet in White (K-7505-0)

Whitehaven™ Self-Trimming® under-mount single-bowl kitchen sink with tall apron in Greenwich Green (K-6489-J15)

Form #12-1314-0512
© 2012 by Kohler Co.
Kohler Co., Kohler, Wisconsin 53044
Printed in U.S.A.
1-800-4-KOHLER
(1-800-456-4537)

KOHLER Colors Featuring Jonathan Adler

Our unabashed love of color is the reason we partnered with designer (and all-around color fanatic) Jonathan Adler. This partnership brings you four special edition KOHLER colors available on select KOHLER® enameled cast iron kitchen and bathroom sinks. Each piece is crafted in our foundry, bringing a legacy of strength, style and soul into your home.



DemiLav® Wading Pool® bathroom sink in Greenwich Green (K-2833-J15)

Purist® single-handle faucet with straight lever handle in White (K-14402-4A-0)

Meet Jonathan Iconic potter, designer, author and television personality Jonathan Adler is dedicated to bringing style, craft and positivity to your home.

Jonathan Adler has become an internationally recognized design brand offering decorative objects, tabletop collections, bedding, bath accessories, gifts, candles, furniture, rugs, pillows, lighting and, most recently, handbags.

Jonathan Adler's creativity is fueled by various sources of inspiration: mid-century modern art and global pop culture combine to create the signature Jonathan Adler aesthetic. Jonathan's company prides itself on its ability to combine a serious design philosophy with a colorful sense of optimism. The guiding motto "If your heirs won't fight over it, we won't make it" reflects Jonathan's commitment to impeccable craftsmanship and irreverent luxury.

He lives in New York City with his husband, Barneys Creative Ambassador, Simon Doonan and their Norwich terrier Liberace.

GREENWICH GREEN



Riverby® under-mount single-bowl kitchen sink with bottom bowl rack in Greenwich Green (K-5871-5UA3-J15)

Purist® single-handle kitchen faucet in White (K-7507-0)



Tides®
K-2839-4-J15



Canvas®
K-2874-J15



DemiLav®
Wading Pool®
K-2833-J15



Whitehaven™
K-6489-J15



Riverby®
K-5871-5UA3-J15



Iron/Tones®
K-6625-J15

Greenwich Green is the perfectly manicured gardens of an English estate. It's cultured and cultivated, and a Greenwich Green sink will turn your kitchen or bathroom into an alcove of calmness.

"This is not dull avocado green. It's bolder, yet timeless. So crisp and refreshing you can taste it."

Jonathan Adler

DemiLav[®] Wading Pool[®] bathroom sink in Greenwich Green (K-2833-J15)

Purist[®] single-handle faucet with straight lever handle in White (K-14402-4A-0)

KOHLER.com/Colors

“There’s a very mod quality to Piccadilly Yellow, especially when paired with white. It’s unexpected and will always feel fresh.”

Jonathan Adler



Tides®
K-2839-4-J14



Canvas®
K-2874-J14



DemiLav®
Wading Pool®
K-2833-J14



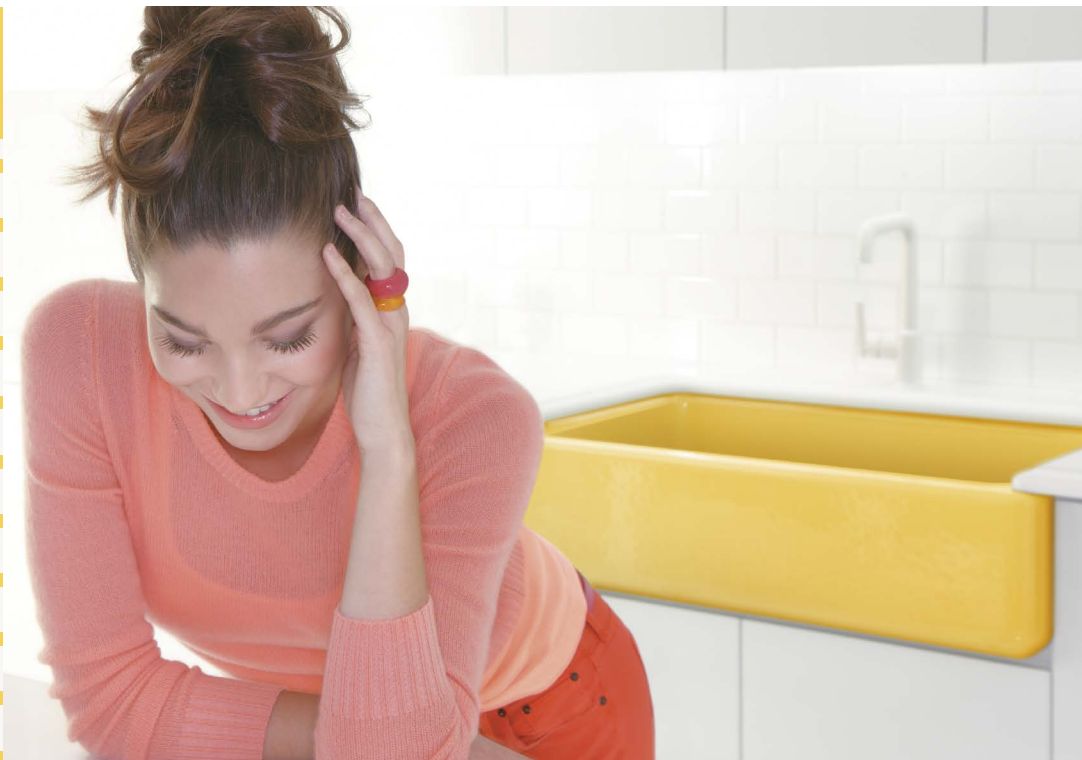
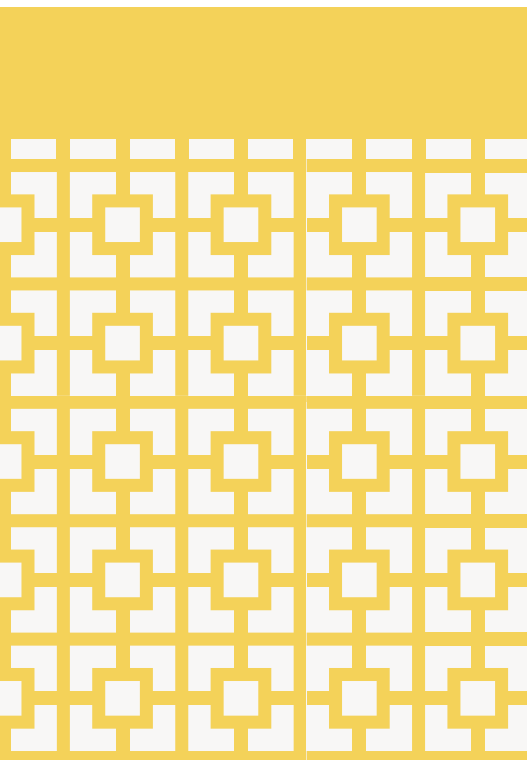
Whitehaven™
K-6489-J14



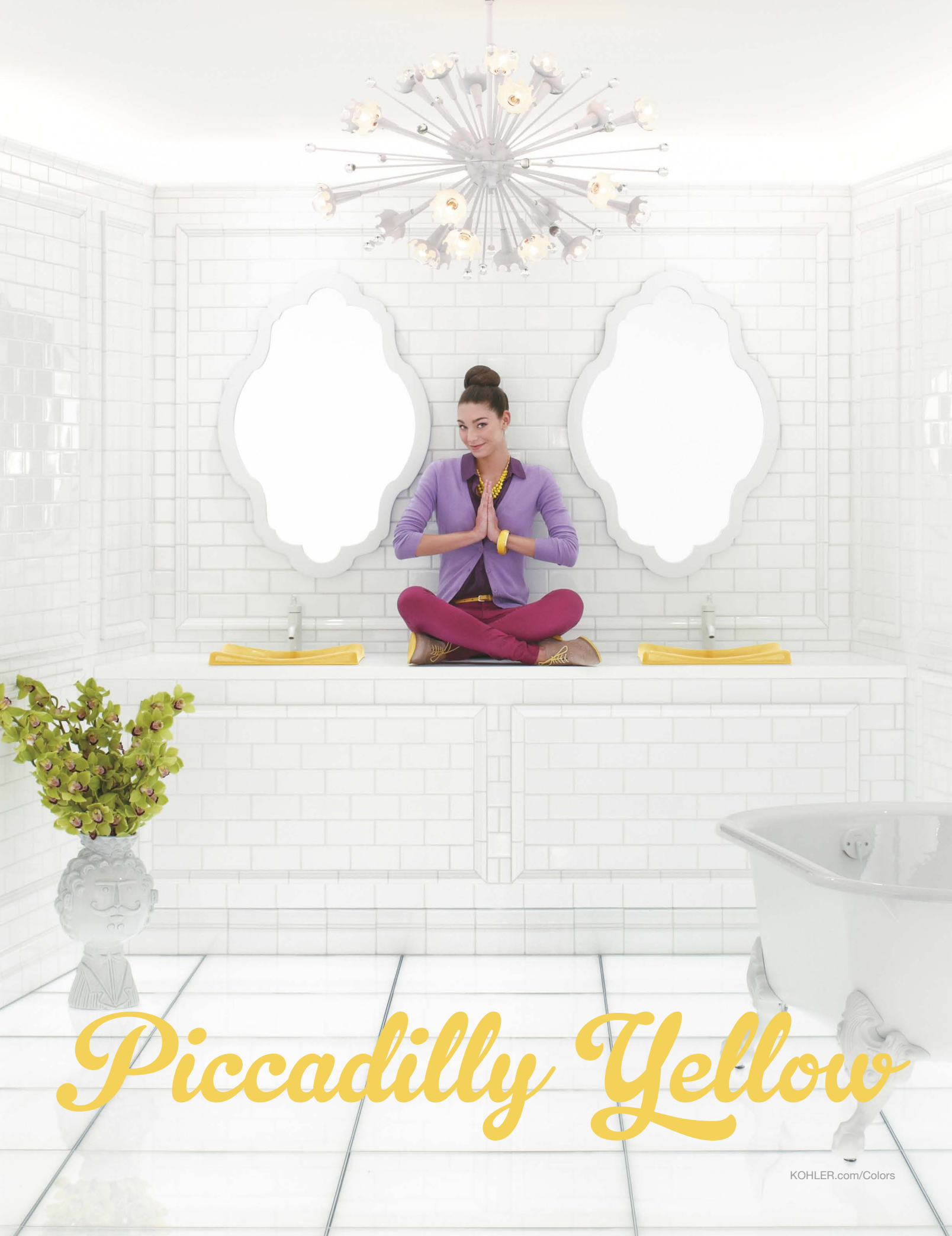
Riverby®
K-5871-5UA3-J14



Iron/Tones®
K-6625-J14



There is nothing mellow about Piccadilly Yellow. This yellow makes us think of the riot of colors parading through London’s Piccadilly Circus. Exuberant and fun, a Piccadilly Yellow kitchen or bathroom sink will fill the space with sheer giddiness. Cheers!



Piccadilly Yellow

Palermo Blue



"A nice, crisp light blue is cool and refreshing, like a dip in the Med."
Jonathan Adler



Tides®
K-2839-4-J16



Canvas®
K-2874-J16



DemiLav®
Wading Pool®
K-2833-J16



Whitehaven™
K-6489-J16



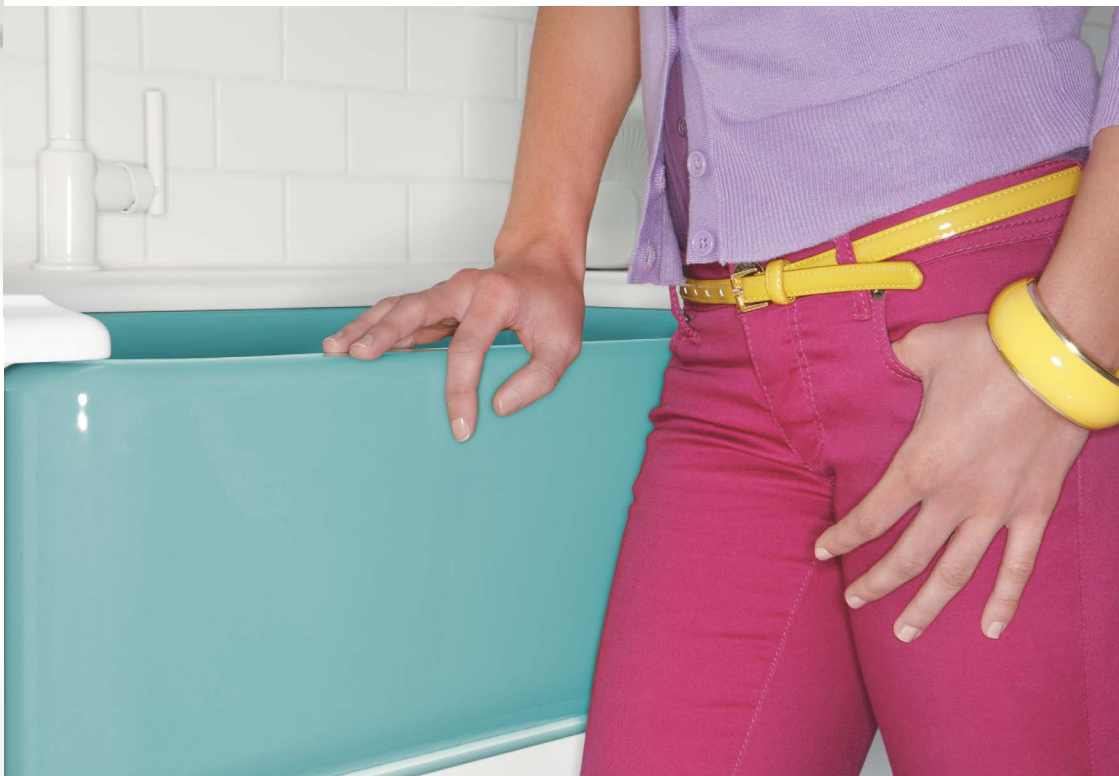
Riverby®
K-5871-5UA3-J16

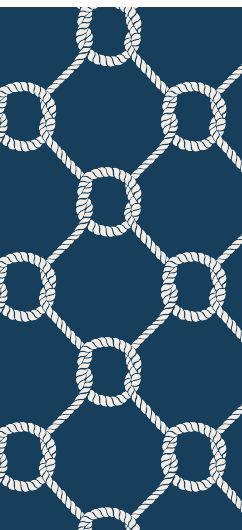


Iron/Tones®
K-6625-J16



Palermo Blue is beautiful and serene, just like the Mediterranean Sea that opens up before the city of Palermo on Sicily. Introduce the serenity of the Mediterranean to your kitchen or bathroom with a Palermo Blue sink.





ANNAPOLIS NAVY

Annapolis Navy is unconditionally classic and calls to mind the beautiful sailing city of Annapolis on Maryland's Severn River. Bring Annapolis Navy into your kitchen or bathroom for a flawless Americana appeal that carries a big, bright personality.





“Navy is nautical and chic. And it’s such a classic color because it pairs so easily with other strong colors.”

Jonathan Adler



Tides®
K-2839-4-J17



Canvas®
K-2874-J17



DemiLav®
Wading Pool®
K-2833-J17



Whitehaven™
K-6489-J17



Riverby®
K-5871-5UA3-J17



Iron/Tones®
K-6625-J17