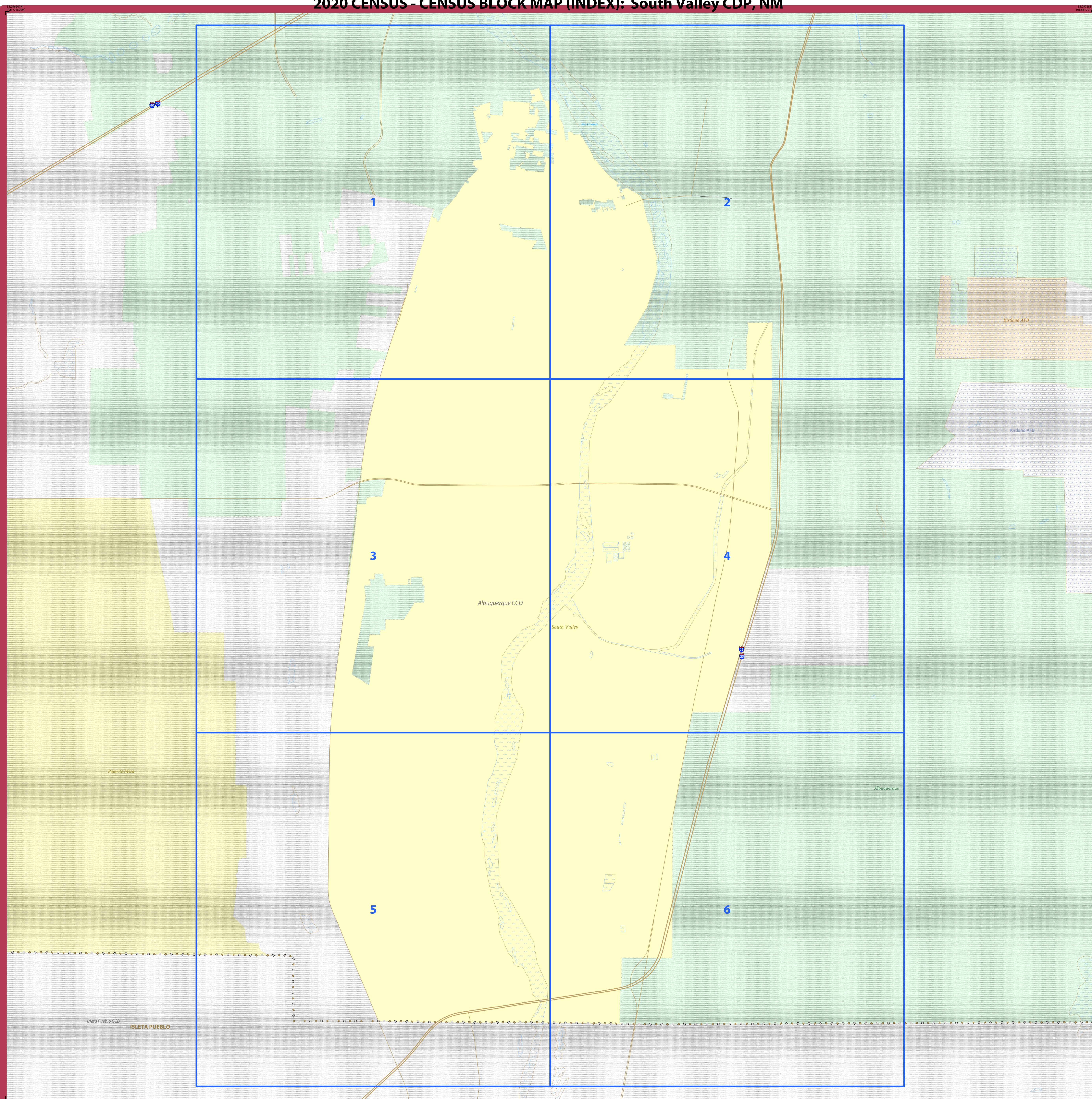


2020 CENSUS - CENSUS BLOCK MAP (INDEX): South Valley CDP, NM



LEGEND

SYMBOL DESCRIPTION	SYMBOL	LABEL STYLE
International or State Water Limit	☆☆☆☆	CANADA
Federal American Indian Reservation	*****	L'ANSE RESVN 1880
Off-Reservation Trust Land or Hawaiian Home Land	+++++	T1880
Oklahoma Tribal Statistical Area, Alaska Native Village Statistical Area, or Tribal Designated Statistical Area	◆◆◆◆◆	KAW OTSA 5690
American Indian Tribal Subdivision	●●●●●	EAGLE NEST DIST 200
State American Indian Reservation	///////	Tama Resvn 9400
State Designated Tribal Statistical Area	◆◆◆◆◆	Lumbee SDTSA 9815
Alaska Native Regional Corporation	▽▽▽▽▽	MANA ANRC 52120
State (or statistically equivalent entity)		NEW YORK 36
County (or statistically equivalent entity)	□□□□□	MONTGOMERY 031
Minor Civil Division (MCD) ¹	○○○○○	Bristol town 07485
Census County Division (CCD), Census Subarea (CSA), or Unincorporated Territory (UT)	○○○○○	Hanna CCD 91650
Consolidated City	○○○○○	MILFORD 47500
Incorporated Place ^{1,2}	■■■■■	Davis 18100
Census Designated Place (CDP) ²	■■■■■	Incline Village 35100
Census Tract ³	■■■■■	33.07
Census Block ⁴	■■■■■	3012

DESCRIPTION	SYMBOL	DESCRIPTION	SYMBOL
Interstate	———	Geographic Offset or Corridor	———
U.S. Highway	———	Water Body	———
State Highway	———	Swamp, Marsh, Gravel Pit, or Quarry	———
Other Road	———	Glacier	———
Cul-de-sac	———	Military	———
Circle	○	National or State Park, Forest, or Recreation Area	———
RV/Trailer, Station, Alley, Walkway, or Ferry	———	College or University	———
Railroad	———	Prison or Juvenile Detention Center	———
Pipeline or Power Line	———	Airport, Airfield, or Helicopter Landing Pad	———
Ridge or Fence	———	Selected Mountain Peaks	———
Perennial Stream	———	Island Name	DEER IS
Intermittent Stream	———	Nonvisible Boundary or Feature Not Elsewhere Classified	———
Inset Area	A	Outside Subject Area	———

Where international, state, county, and/or MCD/CCD boundaries coincide, the map shows the boundary symbol for only the highest-ranking of these boundaries. Where American Indian reservation and American Indian tribal subdivision boundaries coincide, the map shows only the American Indian reservation boundaries. Where Oklahoma tribal statistical area boundaries and American Indian tribal subdivision boundaries coincide, the map shows only the Oklahoma tribal statistical area boundaries.

Geographic area names are followed by either their FIPS or census code.

1 A * following an MCD name denotes a false MCD. A * following a place name indicates that a false MCD exists that is coterminous with the place and has the same name and FIPS code as the place; the false MCD label is not shown.

2 Place label color corresponds to the place fill color.

3 Census tracts are identified by an up to four-digit integer number and may have an optional two-digit suffix; for example 23 or 1457.02. The census tract codes consist of six digits with an implied decimal between the fourth and fifth digit corresponding to the basic census tract number, but with leading zeros, and trailing zeros for census tracts without a suffix. The tract number examples above would have codes of 002300 and 145702, respectively.

4 A * following a block number indicates that the block number is repeated elsewhere in the block.

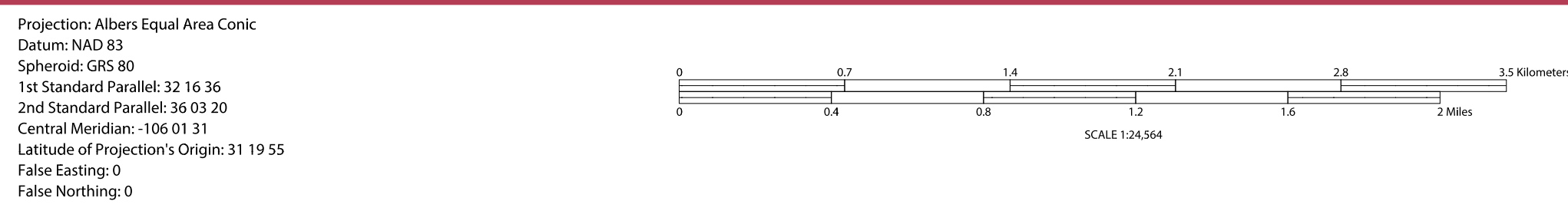
Due to space limitations, some areas and features such as water bodies, colleges, prisons, and roads may not be labeled.

Note: This index map sheet provides the map sheet configuration in relation to the subject entity. Due to scale limitations, map content may be simplified. Refer to parent and/or inset map sheets for detailed map content.

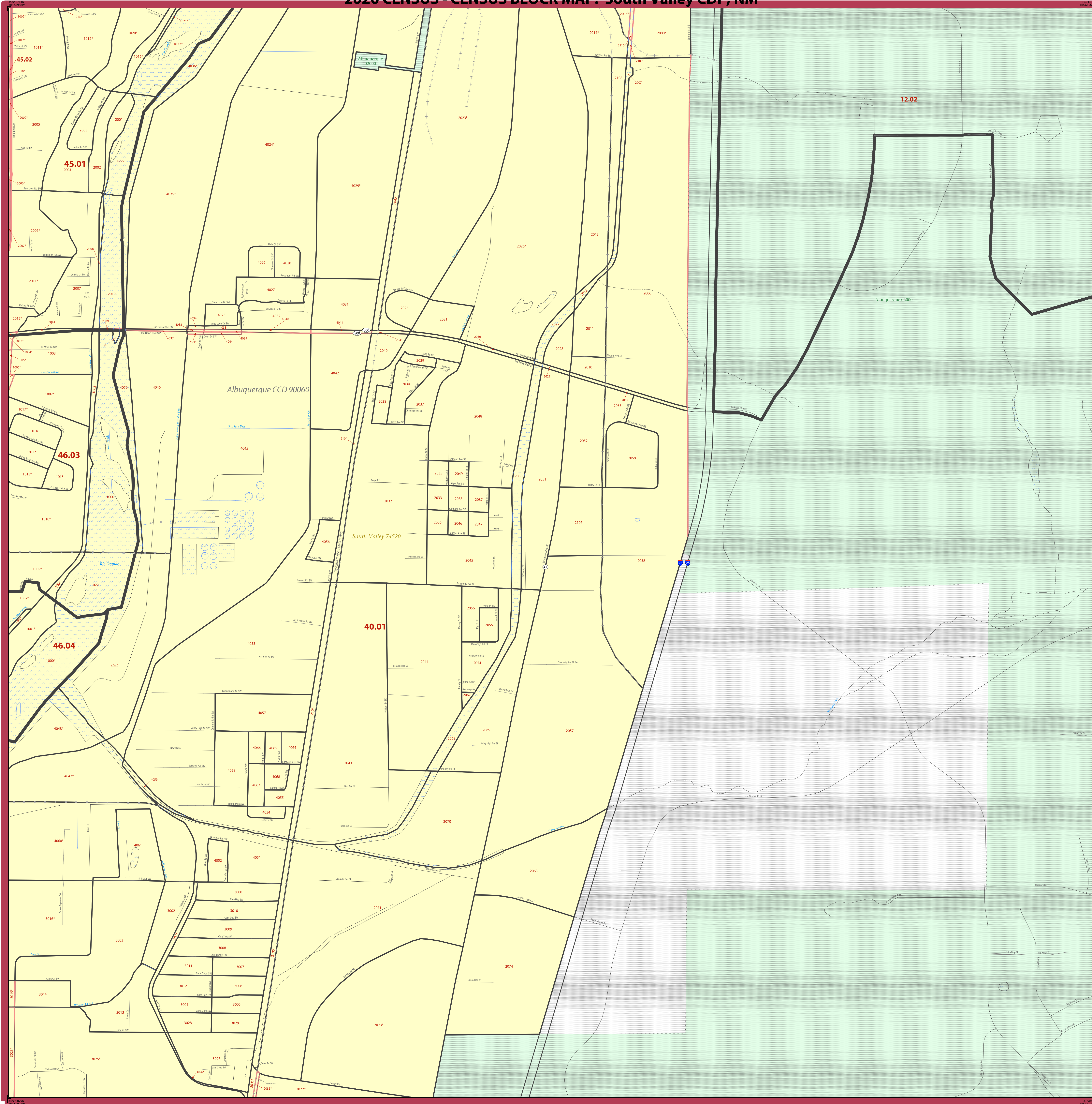
All legal boundaries and names are as of January 1, 2020. The boundaries shown on this map are for Census Bureau statistical data collection and tabulation purposes only; their depiction and designation for statistical purposes does not constitute a determination of jurisdictional authority or rights of ownership or entitlement.

Geographic Vintage: 2020 Census (reference date: January 1, 2020)
 Data Source: U.S. Census Bureau's MAI/TIGER database (TAE20)
 Map Created by Geography Division: April 10, 2021

U.S. DEPARTMENT OF COMMERCE U.S. Census Bureau



2020 CENSUS - CENSUS BLOCK MAP: South Valley CDP, NM



LEGEND	
SYMBOL DESCRIPTION	LABEL STYLE
International or State Water Limit	☆☆☆☆☆ CANADA
Federal American Indian Reservation	★ ★ ★ ★ ★ L'ANSE RESVN 1880
Off-Reservation Trust Land or Hawaiian Home Land	+ + + + + T1880
Oklahoma Tribal Statistical Area, Alaska Native Village Statistical Area, or Tribal Designated Statistical Area	◆ ◆ ◆ ◆ ◆ KAW OTSA 5690
American Indian Tribal Subdivision	● ● ● ● ● EAGLE NEST DIST 200
State American Indian Reservation	////// Tama Resvn 9400
State Designated Tribal Statistical Area	◆ ◆ ◆ ◆ ◆ Lumbee SDTSA 9815
Alaska Native Regional Corporation	▼ ▼ ▼ ▼ ▼ ANA ANRC 52120
State (or statistically equivalent entity)	▨ ▨ ▨ ▨ ▨ NEW YORK 36
County (or statistically equivalent entity)	▣ ▣ ▣ ▣ ▣ MONTGOMERY 031
Minor Civil Division (MCD) ¹	○ ○ ○ ○ ○ Bristol town 07485
Census County Division (CCD), Census Safety (CSA), or Unorganized Territory (UT)	○ ○ ○ ○ ○ Hanna CCD 91650
Consolidated City	○ ○ ○ ○ ○ MILFORD 47500
Incorporated Place ^{1,2}	■ ■ ■ ■ ■ Davis 18100
Census Designated Place (CDP) ²	■ ■ ■ ■ ■ Incline Village 35100
Census Tract ³	■ ■ ■ ■ ■ 33.07
Census Block ⁴	■ ■ ■ ■ ■ 3012

DESCRIPTION	SYMBOL	DESCRIPTION	SYMBOL
Interstate	— 1 —	Geographic Offset or Corridor	— A —
U.S. Highway	— 2 —	Water Body	— Pleasant Lake
State Highway	— 3 —	Swamp, Marsh, Gravel Pit, or Quarry	— Clearlake Swamp
Other Road	— 4 —	Glacier	— Bering Glacier
Cul-de-sac	— 5 —	Military	— Fort Belvoir
Circle	— 6 —	National or State Park, Forest, or Recreation Area	— Yosemite Natl PK
4WD Trail, Steamer, Alley, Walkway, or Ferry	— 7 —	College or University	— Brown Univ.
Railroad	— 8 —	Prison or Juvenile Detention Center	— Baxter County Jail
Pipeline or Power Line	— 9 —	Airport, Airfield, or Helicopter Landing Pad	— Denver Airt.
Ridge or Fence	— 10 —	Selected Mountain Peaks	— Mt. Denali
Perennial Stream	— 11 —		
Intermittent Stream	— 12 —		
Island Name	DEER IS		
Nonvisible Boundary or Feature Not Elsewhere Classified	— 13 —		
Inset Area	A	Outside Subject Area	—

Where international, state, county, and/or MCD/CCD boundaries coincide, the map shows the boundary symbol for only the highest-ranking of these boundaries. Where American Indian reservation and American Indian tribal subdivision boundaries coincide, the map shows only the American Indian reservation boundaries. Where Oklahoma tribal statistical area boundaries and American Indian tribal subdivision boundaries coincide, the map shows only the Oklahoma tribal statistical area boundaries.

Geographic area names are followed by either their FIPS or census code.

1 A "*" following an MCD name denotes a false MCD. A "*" following a place name indicates that a false MCD exists that is coterminous with the place and has the same name and FIPS code as the place; the false MCD label is not shown.

2 Place label color corresponds to the place fill color.

3 Census tracts are identified by an up to four-digit integer number and may have an optional two-digit suffix; for example 23 or 1457.02. The census tract codes consist of six digits with an implied decimal between the fourth and fifth digit corresponding to the basic census tract number, but with leading zeros, and trailing zeros for census tracts without a suffix. The tract number examples above would have codes of 002300 and 145702, respectively.

4 A "*" following a block number indicates that the block number is repeated elsewhere in the block.

Due to space limitations, some areas and features such as water bodies, colleges, prisons, and roads may not be labeled.

SUBJECT AREA COUNTIES ON MAP SHEET
35001 Bernalillo

1	2
3	4
5	6

[Map showing sheet 4 highlighted in yellow within a grid of 6 sheets]	
---	--

Sheet 4 of 6 PARENT sheets
Total Sheets: 7 (Index 1; Parent 6; Inset 0)

All legal boundaries and names are as of January 1, 2020. The boundaries shown on this map are for Census Bureau statistical data collection and tabulation purposes only; their depiction and designation for statistical purposes does not constitute a determination of jurisdictional authority or rights of ownership or entitlement.

Geographic: Vintage: 2020 Census (reference date: January 1, 2020)
Data Source: U.S. Census Bureau's MAINTIGR database (TAB20)
Map Created by Geography Division: April 10, 2021

U.S. DEPARTMENT OF COMMERCE U.S. Census Bureau

Projection: Albers Equal Area Conic
Datum: NAD83
Spheroid: GRS 80
1st Standard Parallel: 32 16 36
2nd Standard Parallel: 36 03 20
Central Meridian: -106 01 31
Latitude of Projection's Origin: 31 19 55
False Easting: 0
False Northing: 0

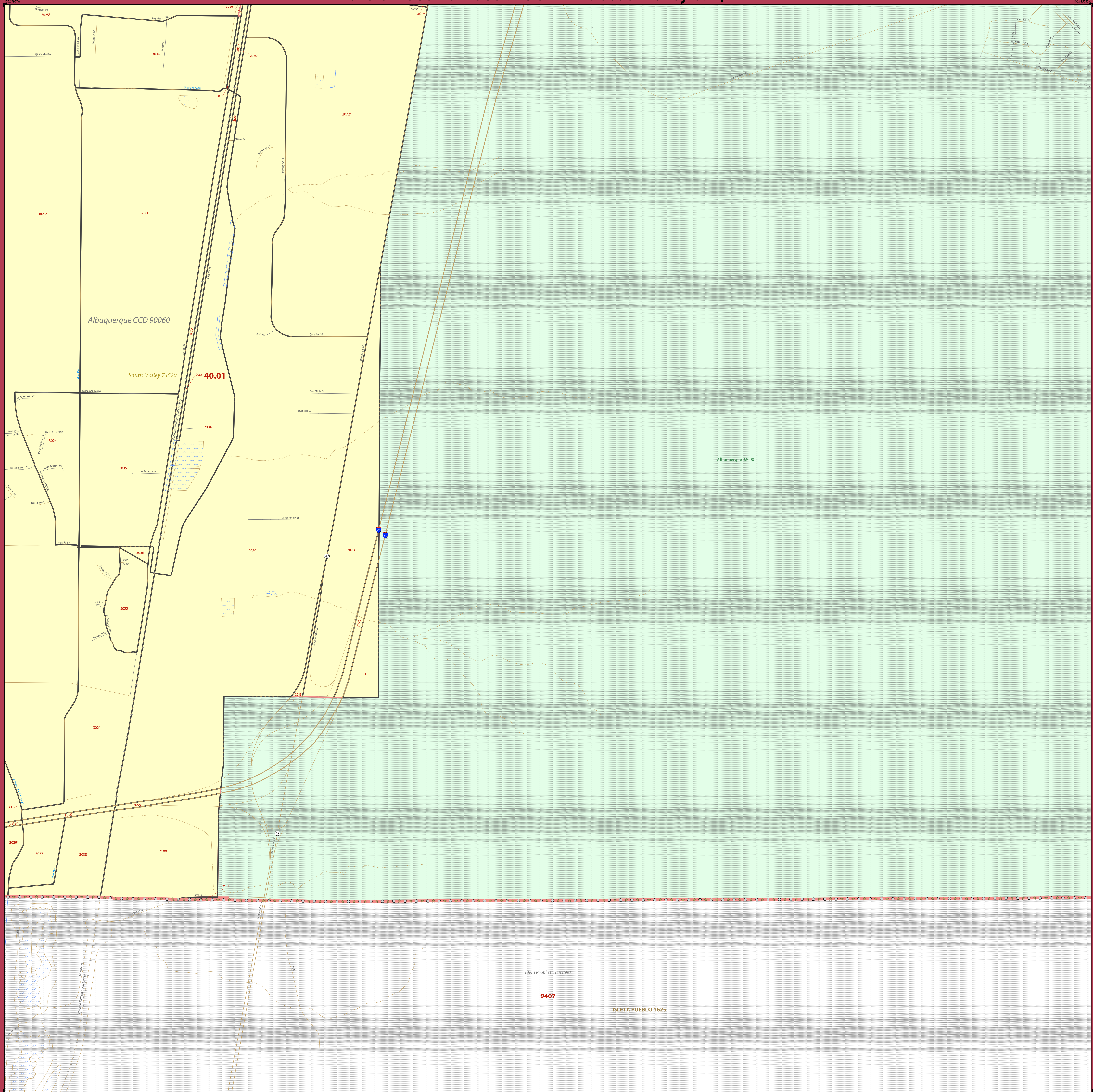
Scale: 1:100,000

United States 2020

NAME: South Valley CDP (74520)
ENTITY TYPE: Census Designated Place
ST: New Mexico (35)
CO: Bernalillo (001)

Geographic Unit (IGU) Block Map Series
2020 CENSUS BLOCK MAP (PARENT) - Sheet ID: 26153574520004

2020 CENSUS - CENSUS BLOCK MAP: South Valley CDP, NM



LEGEND

SYMBOL DESCRIPTION	SYMBOL	LABEL STYLE
International or State Water Limit	☆☆☆☆	CANADA
Federal American Indian Reservation	*****	L'ANSE RESVN 1880
Off-Reservation Trust Land or Hawaiian Home Land	+++++	T1880
Oklahoma Tribal Statistical Area, Alaska Native Village Statistical Area, or Tribal Designated Statistical Area	◆◆◆◆	KAW OTSA 5690
American Indian Tribal Subdivision	●●●●●	EAGLE NEST DIST 200
State American Indian Reservation	////	Tama Resvn 9400
State Designated Tribal Statistical Area	◆◆◆◆	Lumbee SDTSA 9815
Alaska Native Regional Corporation	▽▽▽▽	MANA ANRC 52120
State (or statistically equivalent entity)		NEW YORK 36
County (or statistically equivalent entity)	□□□□	MONTGOMERY 031
Minor Civil Division (MCD) ¹	○○○○	Bristol town 07485
Census County Division (CCD), Census Subarea (CSA), or Unorganized Territory (UT)	○○○○	Hanna CCD 91650
Consolidated City	○○○○	MILFORD 47500
Incorporated Place ^{1,2}	■■■■	Davis 18100
Census Designated Place (CDP) ²	■■■■	Incline Village 35100
Census Tract ³	■■■■	33.07
Census Block ⁴	■■■■	3012

DESCRIPTION	SYMBOL	DESCRIPTION	SYMBOL
Interstate	— — —	Geographic Offset or Corridor	— — —
U.S. Highway	— — —	Water Body	■
State Highway	— — —	Swamp, Marsh, Gravel Pit, or Quarry	■
Other Road	— — —	Glacier	■
Cul-de-sac	— — —	Military	■
Circle	○	National or State Park, Forest, or Recreation Area	■
RTD Trail, Station, Alley, Walkway, or Ferry	— — —	College or University	■
Railroad	— — —	Prison or Juvenile Detention Center	■
Pipeline or Power Line	— — —	Airport, Airfield, or Helicopter Landing Pad	■
Perennial Stream	— — —	Selected Mountain Peaks	■
Intermittent Stream	— — —	Island Name	DEER IS
Nonvisible Boundary or Feature Not Elsewhere Classified	— — —	Inset Area	A
		Outside Subject Area	■

Where international, state, county, and/or MCD/CCD boundaries coincide, the map shows the boundary symbol for only the highest-ranking of these boundaries. Where American Indian reservation and American Indian tribal subdivision boundaries coincide, the map shows only the American Indian reservation boundaries. Where Oklahoma tribal statistical area boundaries and American Indian tribal subdivision boundaries coincide, the map shows only the Oklahoma tribal statistical area boundaries.

Geographic area names are followed by either their FIPS or census code.

1 A "*" following an MCD name denotes a false MCD. A "*" following a place name indicates that a false MCD exists that is coterminous with the place and has the same name and FIPS code as the place; the false MCD label is not shown.

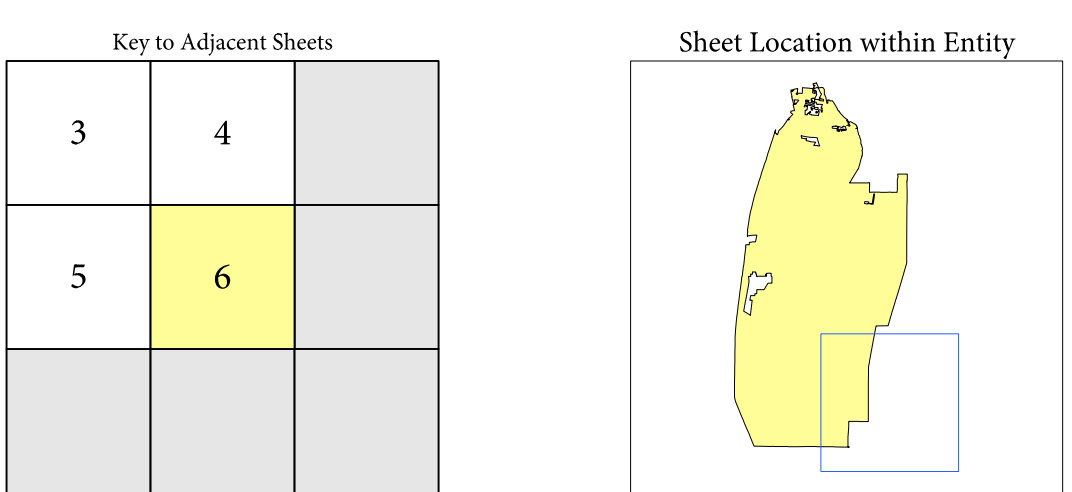
2 Place label color corresponds to the place fill color.

3 Census tracts are identified by an up to four-digit integer number and may have an optional two-digit suffix; for example 23 or 1457.02. The census tract codes consist of six digits with an implied decimal between the fourth and fifth digit corresponding to the basic census tract number, but with leading zeros and trailing zeros for census tracts without a suffix. The tract number examples above would have codes of 002300 and 145702, respectively.

4 A "*" following a block number indicates that the block number is repeated elsewhere in the block.

Due to space limitations, some areas and features such as water bodies, colleges, prisons, and roads may not be labeled.

SUBJECT AREA COUNTIES ON MAP SHEET
35001 Bernalillo



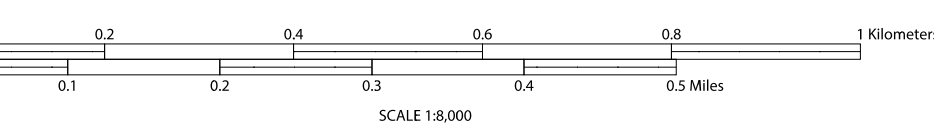
Sheet 6 of 6 PARENT sheets
Total Sheets: 7 (Index 1; Parent 6; Inset 0)

All legal boundaries and names are as of January 1, 2020. The boundaries shown on this map are for Census Bureau statistical data collection and tabulation purposes only; their depiction and designation for statistical purposes does not constitute a determination of jurisdictional authority or rights of ownership or entitlement.

Geographic: Vintage: 2020 Census (reference date: January 1, 2020)
Data Source: U.S. Census Bureau's MAINTIGR database (TAB20)
Map Created by Geography Division: April 10, 2021

U.S. DEPARTMENT OF COMMERCE U.S. Census Bureau

Projection: Albers Equal Area Conic
Datum: NAD 83
Spheroid: GRS 80
1st Standard Parallel: 32 16 36
2nd Standard Parallel: 36 03 20
Central Meridian: -106 01 31
Latitude of Projection's Origin: 31 19 55
False Easting: 0
False Northing: 0



NAME: South Valley CDP (74520)
ENTITY TYPE: Census Designated Place
ST: New Mexico (35)
CO: Bernalillo (001)

Geographic Unit (GU) Block Map Series
2020 CENSUS BLOCK MAP (PARENT) - Sheet ID: 26153574520006